



SPECIFICATIONS FOR APPROVAL

All data in this report only represent the data when the sample antenna is correctly installed in the designated test object. Replacing the test object or changing the installation method and position of the antenna will render the data in the report invalid.

Antenna manufacturer: Shenzhen Lejin radio frequency technology Co., LTD

Company Address: 3rd Floor, Building A4, No. 176 Chongqing Road, Fuhai Street, Bao'an District, Shenzhen, Guangdong Province. (Phone number: 13603098741)

Customer Name:	Zwide
Product Name:	MP21
Product Model:	WIFI AUX ANT
Part Number:	LJF02-240808002A-R0A
Write By :	Star_Li
Issued Date:	2024/8/8

CUSTOMER				
ENGINEER R&D DEPT	BUSSINESS DEPT	APPROVED BY	DATE	Edition/Part number
LEJIN				
R&D DEPT	ENGINEER R&D DEPT	APPROVAL	DATE	Edition/Part number

ECN/ECR			



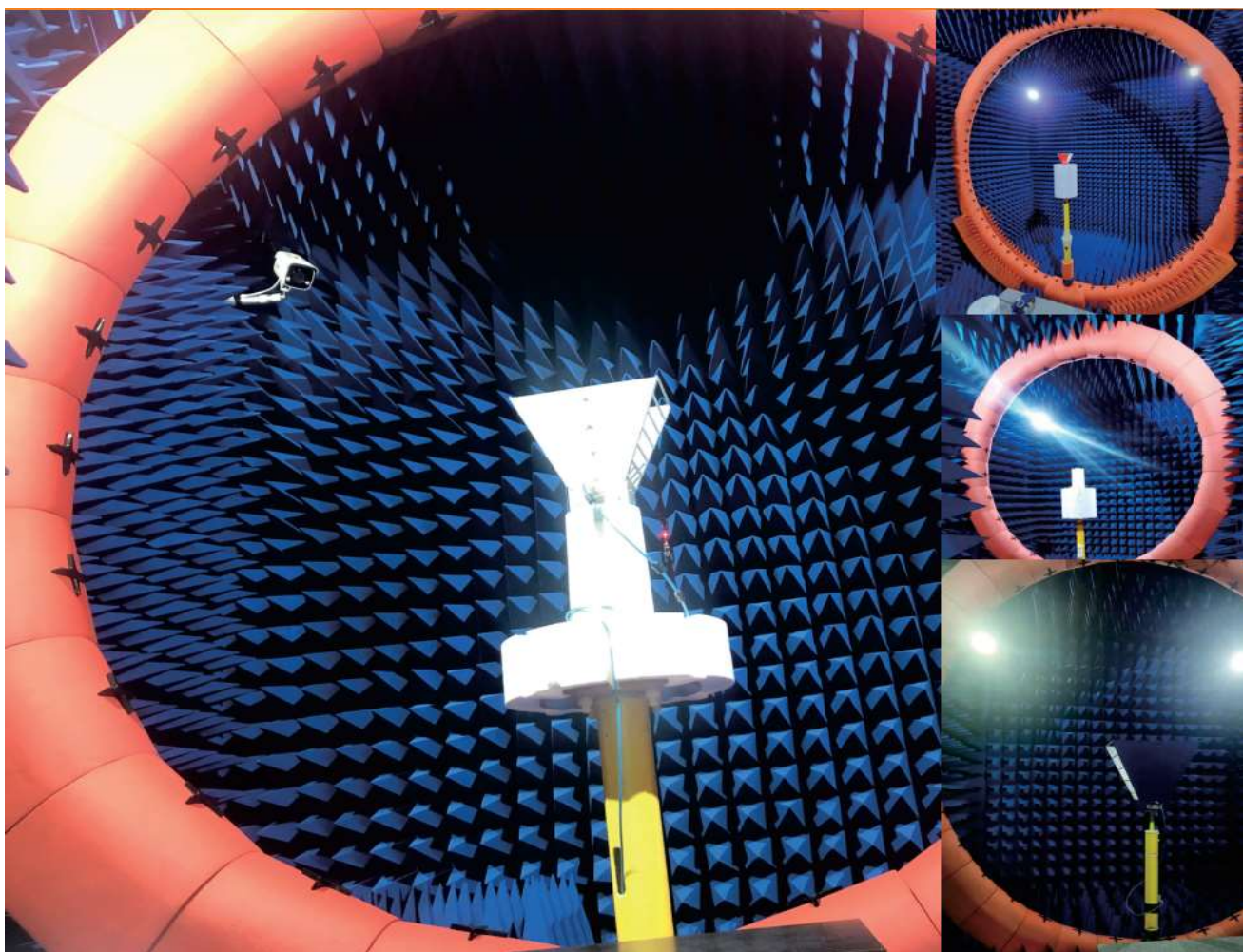
Index

- 1、 Cover
- 2、 Index
- 3、 Product Specification
- 4、 Test Equipment & Conditions
- 5、 Test Report
- 6、 Antenna Picture
- 7、 Product Drawing

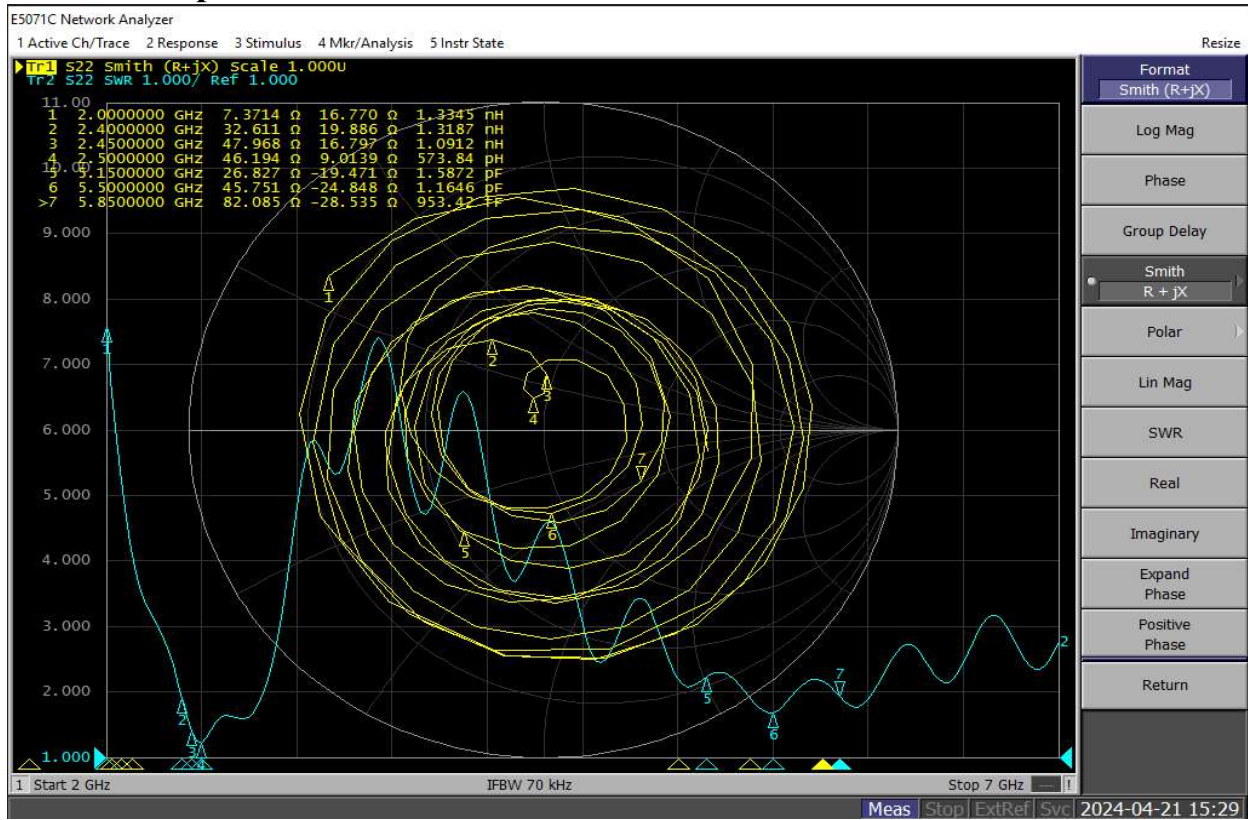
Electrical Characteristics					
Frequency	VSWR	Efficiency	Impedance	Polarization	Gain
2400 MHz ~2500 MHz	<2	>25%	50 Ohm	Linear	≥1 DB
5100MHZ--5900 MHZ	<2.5	>30%	50 Ohm	Linear	≥1 DB
Material & Mechanical Characteristics			Environmental		
Material of Radiator	Cable Type	Connector Type	Dimension	Operation Temperature	Storage Temperature
FPC black/YELLOW	113 Gray	KCC451-140		- 20 °C ~ + 50 °C	- 30 °C ~ + 80 °C

Test Equipment & Conditions

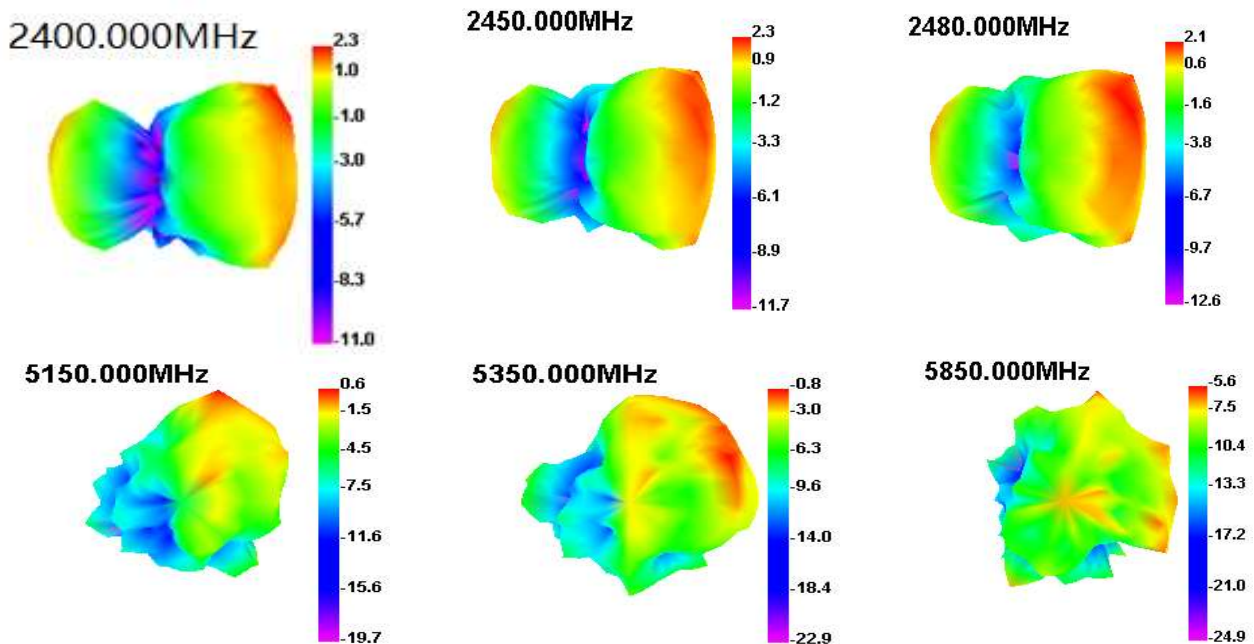
1. Network Analyzers :Agilent 8753SE 5071C
2. Communications Test Set:Agilent E5515C/CMW500
3. 3D Chamber Test System(ETS743)



Antenna Impedance: WIFI ANT A:



Band	Metric	Unit	2400	2410	2420	2430	2450	2460	2470	2480	2490	2500	ANT A
			2.4G (Wifi and BT)	Effi (%)	25.37	27.68	31.25	32.77	35.46	31.95	30.69	32.74	
5G WIFI	Gain (dBi)		2.12	2.34	2.46	2.88	2.99	1.98	2.45	2.27	2.25	2.12	
	Effi (%)		35.99	40.41	39.59	41.23	42.77	44.56	42.02	43.77	44.65	43.47	
	Gain (dBi)		2.57	2.88	2.02	2.15	2.08	2.15	1.88	2.27	2.15	2.02	

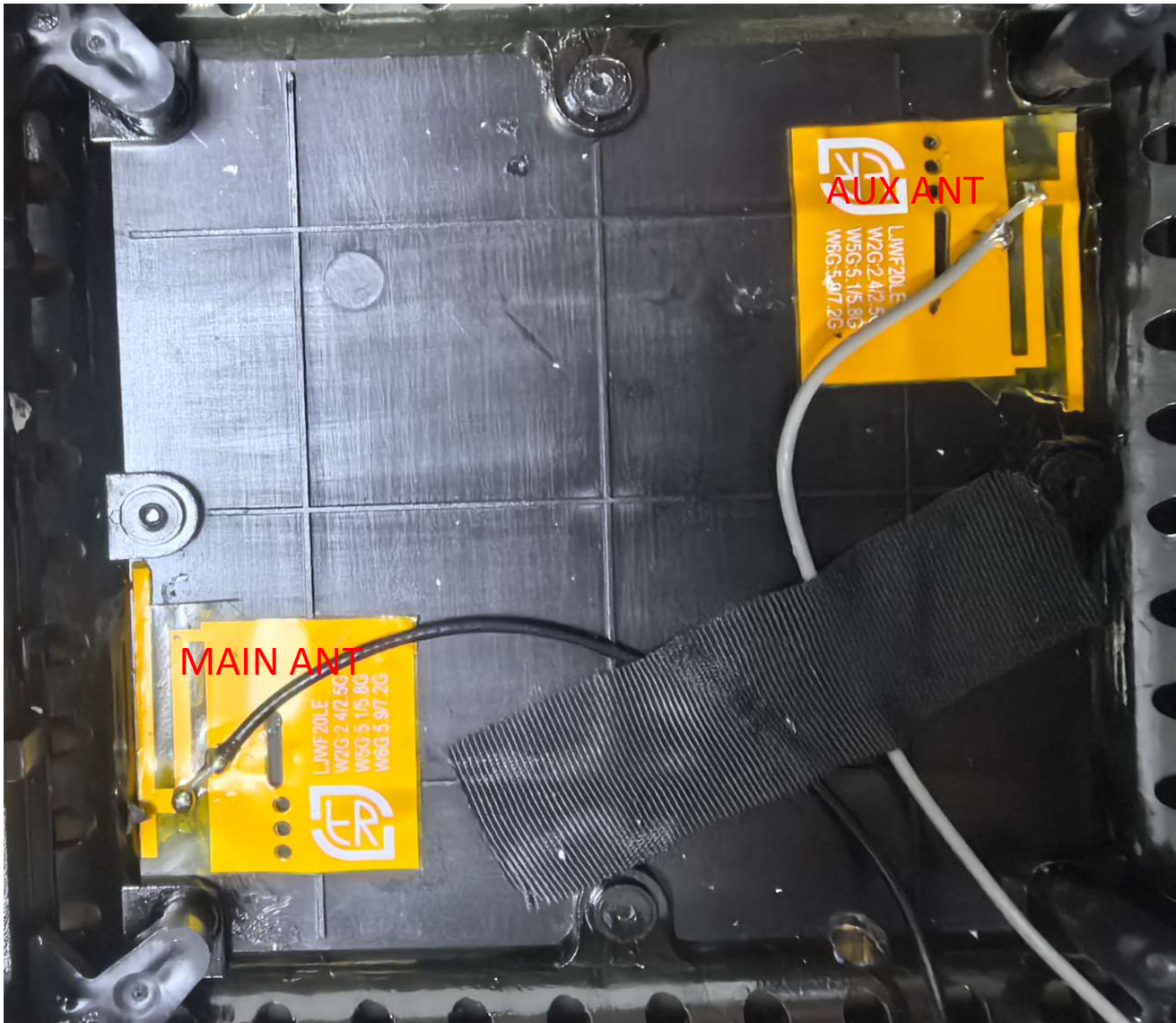


OTD_DATA: The following OTD_DATA was obtained from testing the antenna in this specification document. If the antenna is replaced or the installation method is changed, the following OTD_DATA will become invalid. The following data was measured together with the WIFI Main antenna.

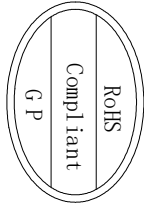
2.4G 802.11.B @11Mbit		
Frequency	TRP (dBm)	TIS (dBm)
1 (2412MHz)	11.23	-71.95
6 (2437MHz)	10.95	-71.33
13 (2472MHz)	10.11	-70.56

5G 802.11 A @54MBPS		
Frequency	TRP (dBm)	TIS (dBm)
36 (5180MHz)	12.77	-73.33
60 (5300MHz)	13.15	-74.56
161 (5805MHz)	12.56	-74.11

天线安装与工艺处理要求与说明:

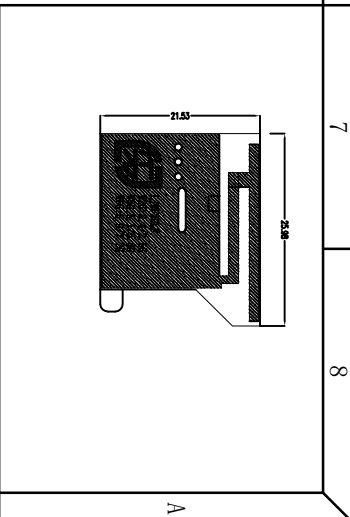
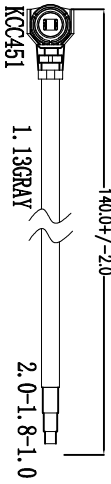
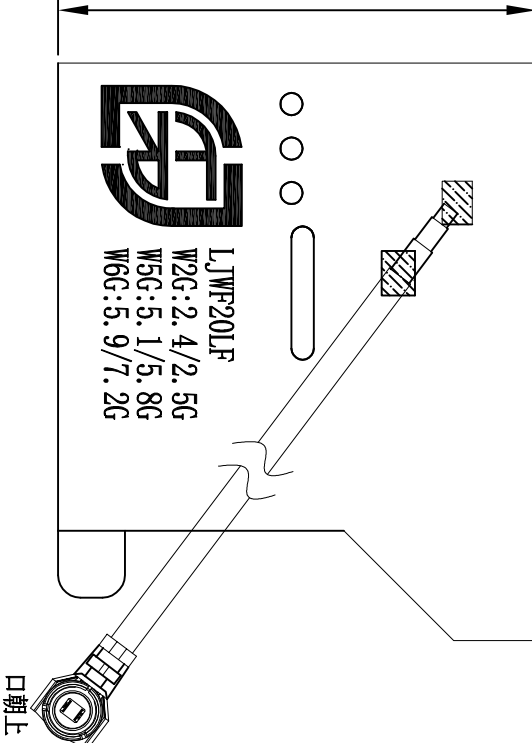


Drwing:



26.04

21.53



Rev	1	2	3	4	5	6	7	8
Description	New drawing							
Date								
Remark								

Third Angle	0~10	±0.05	○	0.02	Project	MP21	Date	2024-08-08
Part Name	10~18	±0.10	◎	0.03	Part Name	WIFI MAIN ANT	Designed by	
Part No.	18~30	±0.12	┴	0.02	Part No.	JYT0918A	Checked by	MD
Material	30~40	±0.15	∇	0.04	Material	LJF01-18091801-R0A	RF	
Location	40~	±0.20	Angle	±0.5°	Treatment	LJF02-240808002A-R0A	Approved by	

深圳乐进射频频科技有 限 公 司	
SHEN ZHEN LEJIN RADIO FREQUENCY CO.,LTD	