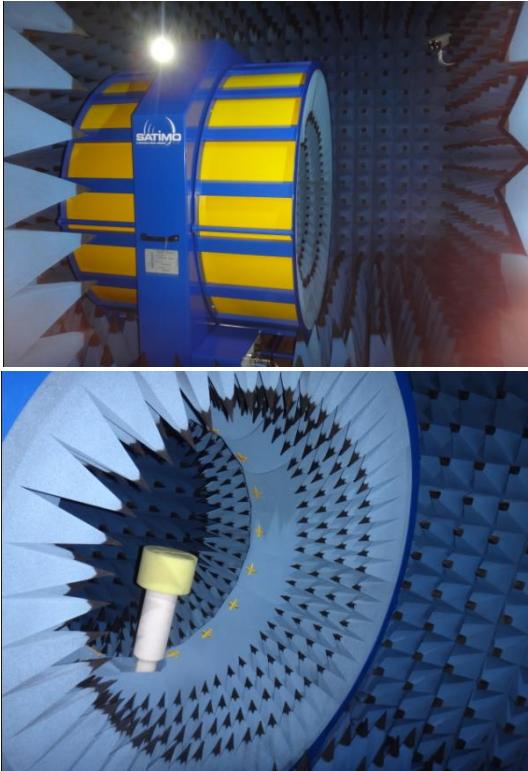


Test Report



Customer Name	Small cool	Project Name	K06L-Latin America
Commissioning frequency band	GSM4P/WCDMA1/2/4/5/8/FDD1/2/3/4/5/7/8/12/17/20/28/66/71	Structure mode	FPC
RF Engineer	XIANG YI	Structural Engineer	Du Qiang
Antenna Type	PIFA	Date	2024/6/29



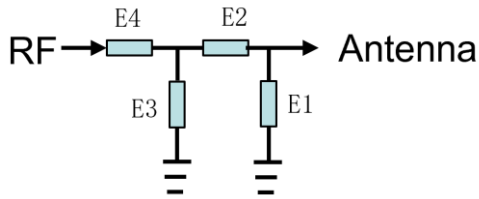
The original imported French SATIMO StarLab 3D laboratory can accurately and quickly test the TRP, TIS, efficiency, gain, Apple diagram, directional diagram and other parameter data of communication terminal products such as mobile phones, tablet computers and notebooks.

Antenna report version summary

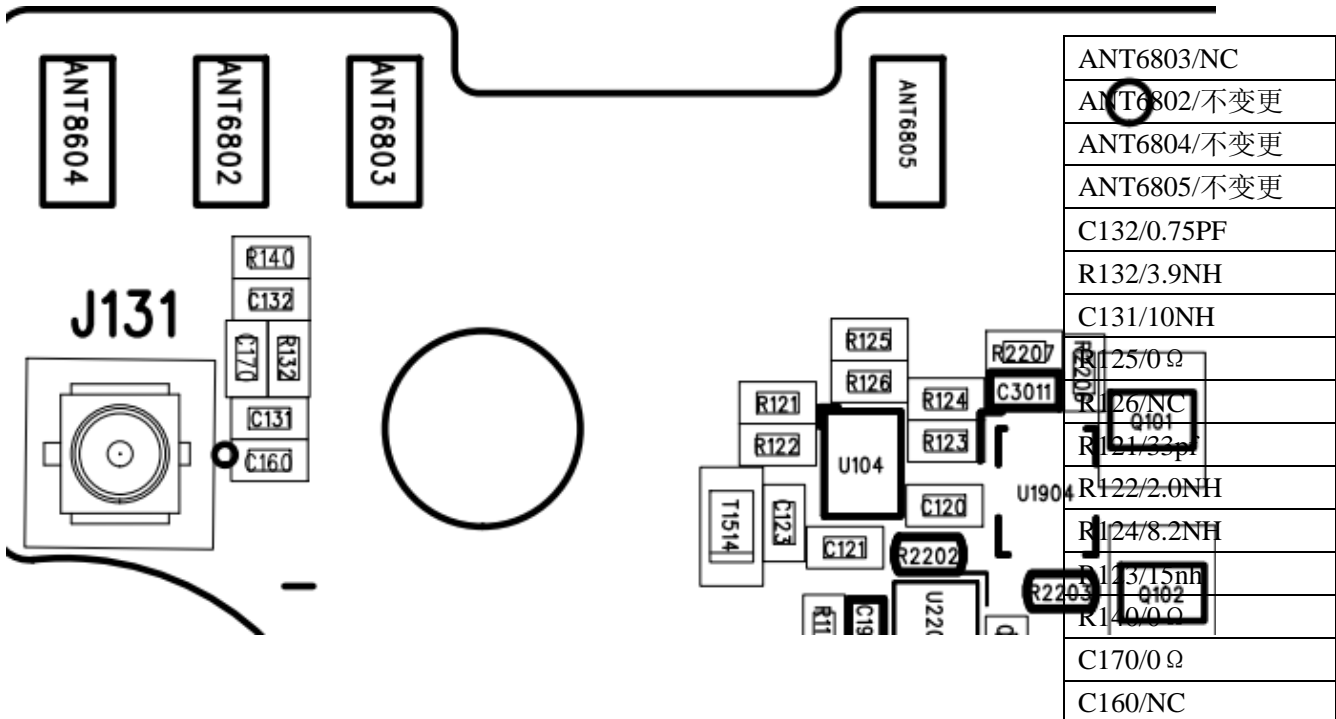
Version	Date	Content Overview
V1.0	2024/5/20	Commissioning machine test report
V2.0		
V3.0		
V4.0		
V5.0		

The main antenna matching circuit ----- has been changed

Element	E1	E2	E3	E4
Value	0.75PF	3.9NH	10NH	0.6u

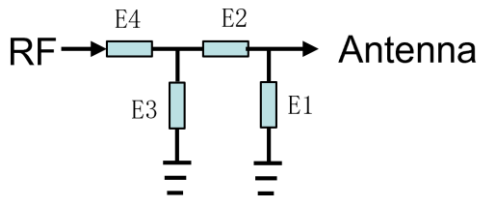


Element	Value	Band
RF1	33PF	GSM8/2/3 W1/2/4/8 B1/2/3/4/7/8/66
RF2	2NH	GSM850 W5/ B5
RF3	8.2NH	B12/17/28
RF4	15nh	B71



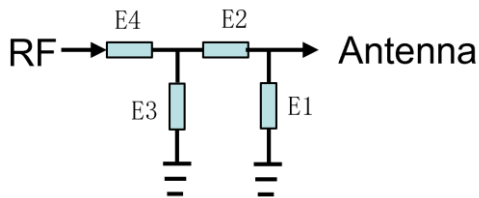
The antenna matching circuit ----- has not been changed

Element	E1	E2	E3	E4
Value	NC	0 欧	NC	0 欧

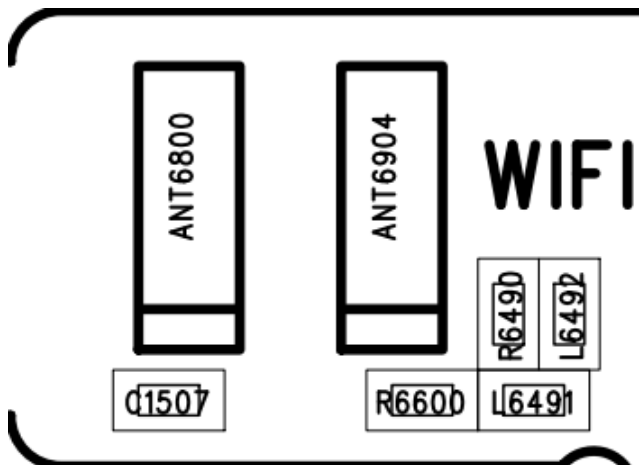


The 3-in-1 antenna matching circuit ----- has been changed

Element	E1	E2	E3	E4
Value	NC	0Ω	NC	0 欧



R6490/0 Ω
R6600/0 Ω
C1507/0 Ω
L6491/NC
L6492/NC

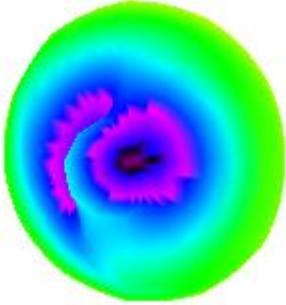


Antenna gain (Antenna Gain)

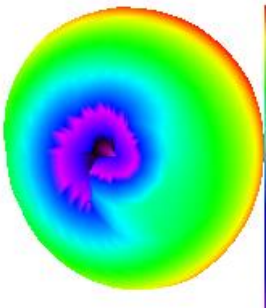
Standard	Band	Gain(dbi)
LTE	FDD-B1	-1.0
LTE	FDD-B3	1.0
LTE	FDD-B5	-4.7
LTE	FDD-B7	-1.0
LTE	FDD-B8	-4.5
LTE	FDD-B20	-4.6
LTE	FDD-B28	-6.0
LTE	FDD-B2	0.3
LTE	FDD-B4	1.0
LTE	FDD-B12	-5.8
LTE	FDD-B17	-5.9
LTE	FDD-B66	1.1
LTE	FDD-B71	-6.3
WCDMA	WCDMA-B1	-1.0
WCDMA	WCDMA-B2	0.3
WCDMA	WCDMA-B4	-1.0
WCDMA	WCDMA-B5	-4.7
WCDMA	WCDMA-B8	-4.5
GSM	GSM 850	-4.7
GSM	GSM 900	-4.5
GSM	DCS 1800	1.0
GSM	PCS 1900	0.3
GPS	1575	-1.8
2.4G WiFi/BT	2.4G-2.5G	0.4
5G WIFI	5.1G-5.85G	1.4

Apple Chart

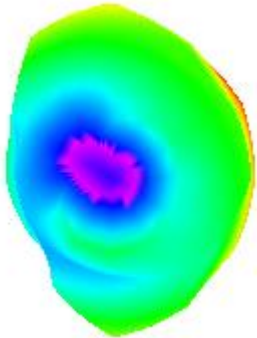
GSM900/W900/LTE-B8



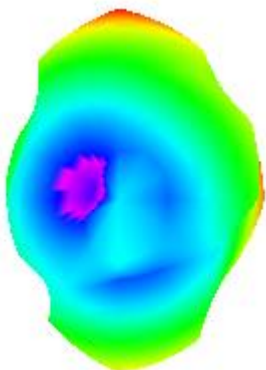
GSM850/W850/LTE-B5/20



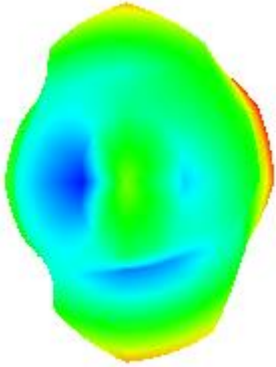
DCS1800/W1700/LTE-B3/4/66



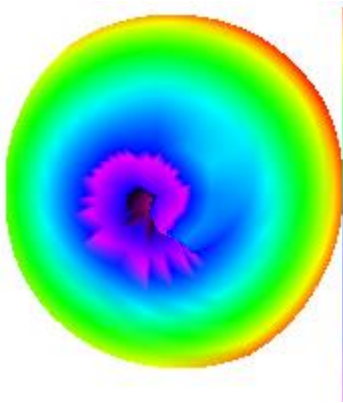
PCS1900/W1900/B2



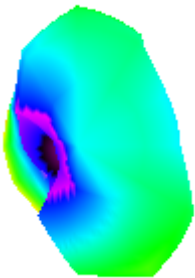
W2100/B1



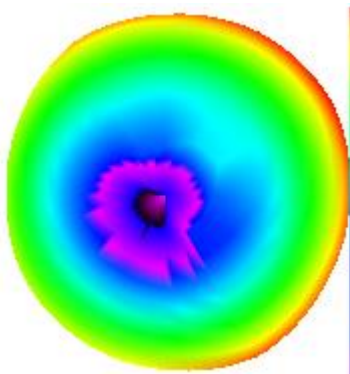
LTE-B28/12/17



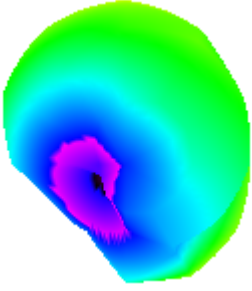
LTE-B7



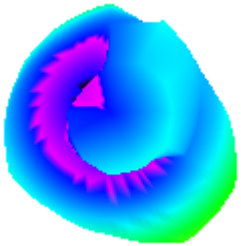
LTE-B71



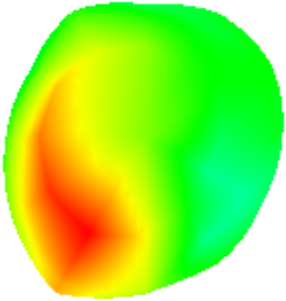
GPS



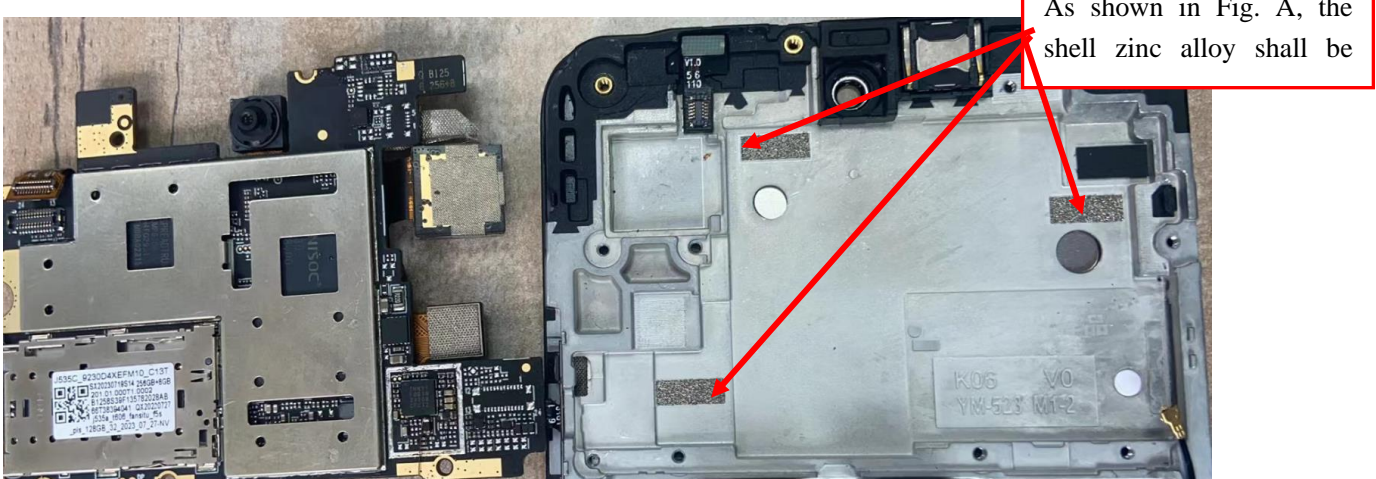
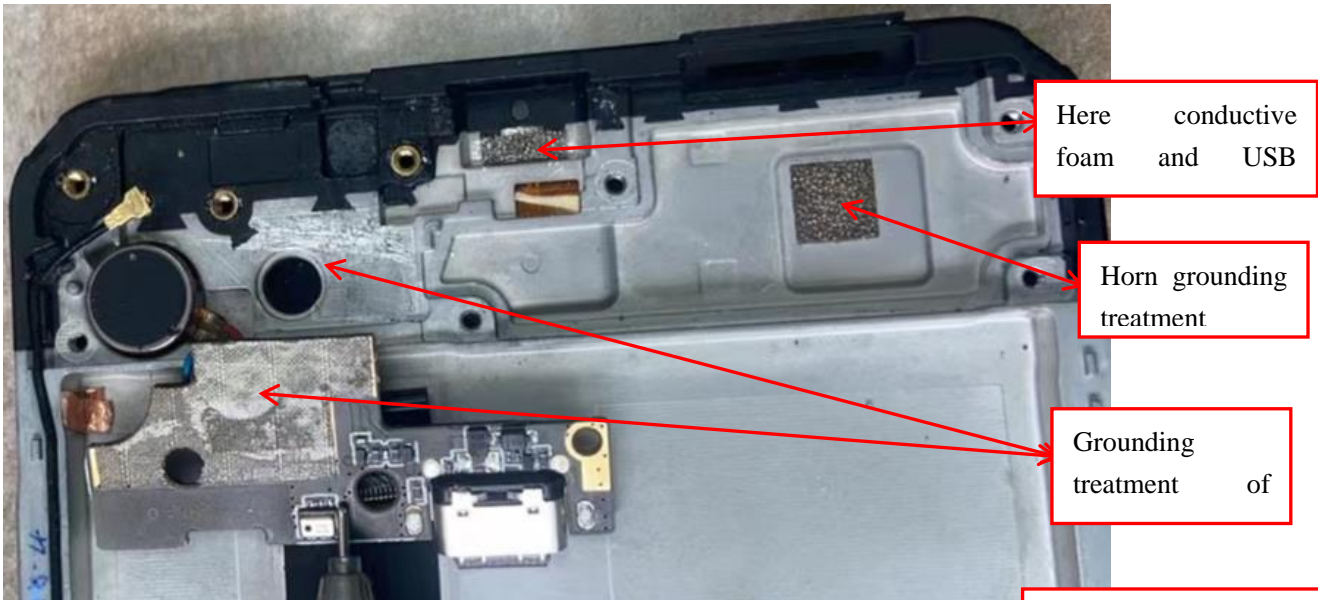
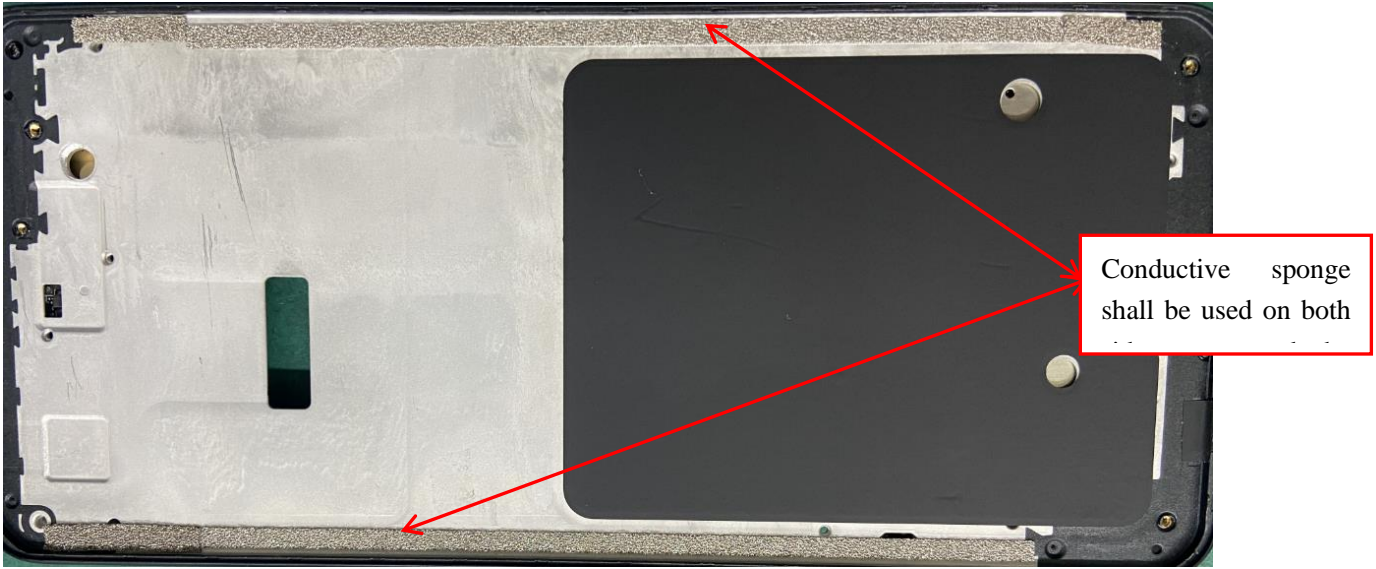
2.4G WIFI/BT

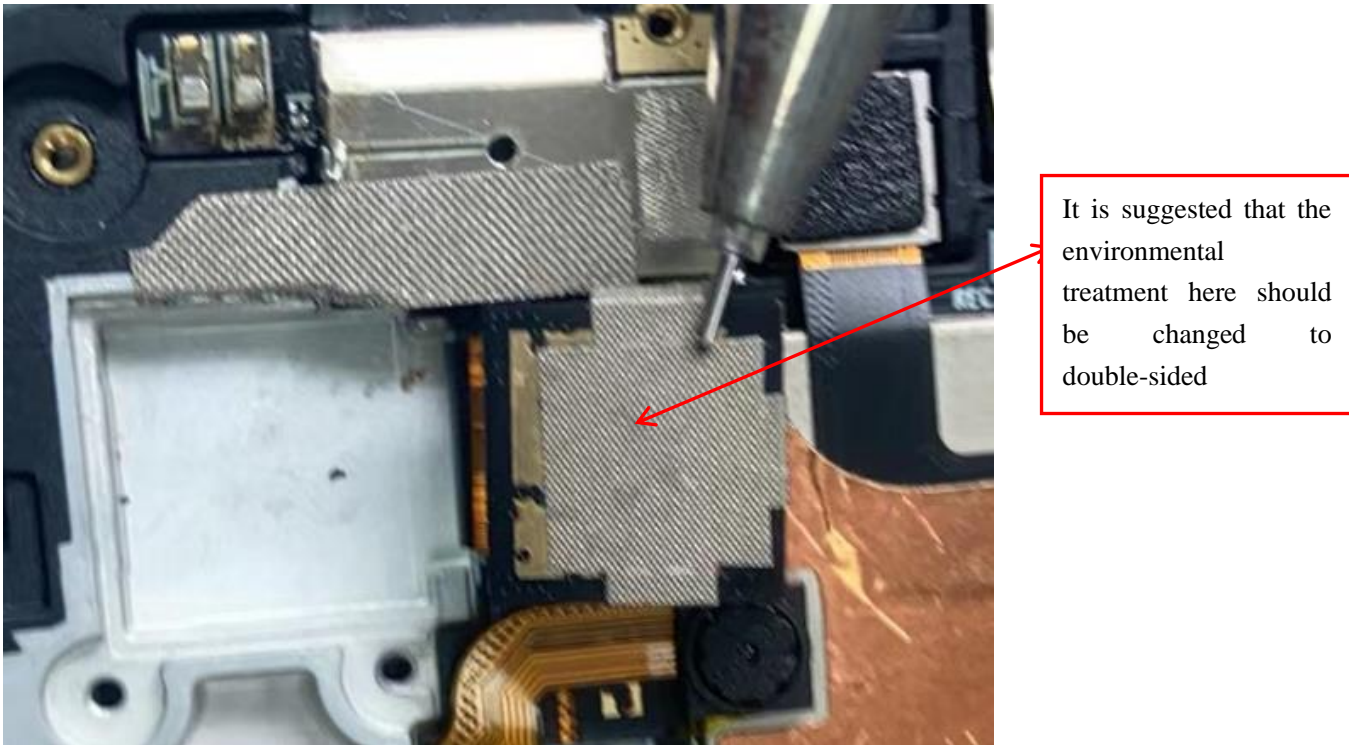
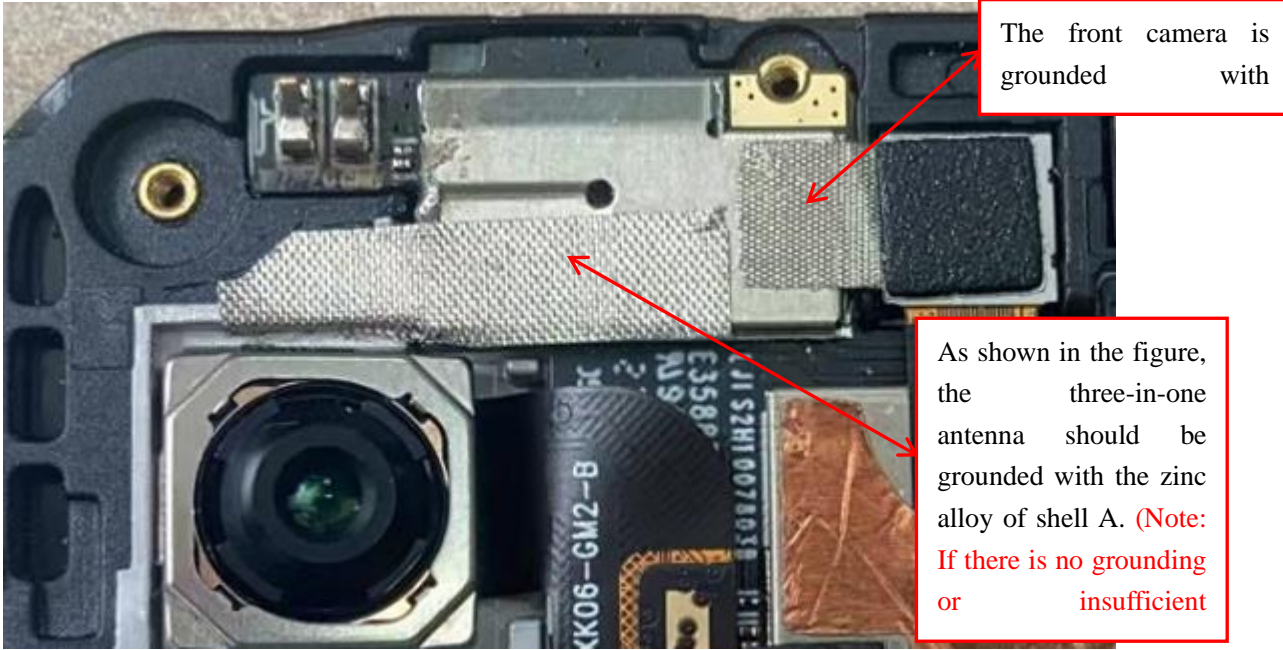


5G WIFI



Environmental treatment:





注意事项:

- 1、 本天线只适用于调试样机，主板 PCB 或射频电路物料更改、配件（如摄像头、屏、喇叭、马达、电池、机壳工艺）等变动，都必须经过我司对整机测试验证后方可使用。
- 2、 此项目如果要进行第三方验证请将样机至少提前一个工作日给我司复测 OK 后再送测，避免二次或多次送测耽误项目进度！