

SYM.	PT.	PART-DESCRIPTION-MATERIAL	FINISH NO. ELSTER REF.	MATERIAL NO. ELSTER REF.
ABC	1	FCC LABEL	SEE NOTE B	SEE NOTE B
ABC	2	FCC LABEL	SEE NOTE B	SEE NOTE B
ABC	3	ALPHA MODEM LABEL	SEE NOTE B	SEE NOTE B
ABC	4	ALPHA OUTAGE MODEM LABEL	SEE NOTE B	SEE NOTE B
ABC	5	US/FCC ITM3 LABEL	SEE NOTE B	SEE NOTE B
ABC	6	CANADIAN ITM3 LABEL	SEE NOTE B	SEE NOTE B
ABC	7	EA_GATEKEEPER WWIC CDMA LABEL	SEE NOTE B	SEE NOTE B
ABC	8	EA_GATEKEEPER WWIC GSM LABEL	SEE NOTE B	SEE NOTE B
ABC	9	A3 METER W/ WWIC CDMA LABEL	SEE NOTE B	SEE NOTE B
ABC	10	A3 METER W/ WWIC GSM LABEL	SEE NOTE B	SEE NOTE B
ABC	11	A3 STANDALONE WWIC 3G, UMTS	SEE NOTE B	SEE NOTE B
ABC	12	A3 STANDALONE WWIC 3G, EVDO	SEE NOTE B	SEE NOTE B
ABC	13	EA_GATEKEEPER 3G, UMTS	SEE NOTE B	SEE NOTE B
ABC	14	EA_GATEKEEPER 3G, EVDO	SEE NOTE B	SEE NOTE B
ABC	15	REXU, UMTS	SEE NOTE B	SEE NOTE B
ABC	16	REXU, EV-DO	SEE NOTE B	SEE NOTE B

A - BOUGHT OUTSIDE FROM WEB LABEL (612-588-0737).
 B - MATERIAL : WHITE 3-MIL POLYESTER STOCK WITH ACRYLIC ADHESIVE AND 1-MIL POLYESTER OVER COAT.
 C - LABEL SIZE IS 1.625 BY .250.

Complies with FCC Part 68 Rules, FCC Reg. No: EJQUSA-23230-MR-E REN 0.5B 3A34326H01-A	Complies with FCC Part 68 Rules, FCC Reg. No: 4Q3USA-32330-MR-E REN 0.7B 3A34326H02-B
Model No. Alpha Modem 2.4i REN: 0.2 3A34326H03-A	Model No. Alpha Outage Modem REN: 0.3 3A34326H04-A
US: QZCMR01BITM3 3A34326H05-A	IC: 4557A-ITM3 3A34326H06-A
FCC ID: QZCWWIC-C01 IC: 4557A-WWIC01 326H07 3A34326H07-A	FCC ID: QZCWWIC-G01 IC: 4557A-WWICG01 326H08 3A34326H08-A
CONTAINS: FCC ID: O9EQ26ELITE IC: 3651C-Q26ELITE 326H09 3A34326H09-A	CONTAINS: FCC ID: N7NQ2687 IC: 2417C-Q2687 326H10 3A34326H10-A
CONTAINS: FCC ID: R17HE910NA IC: 5131A-HE910NA 326H11 3A34326H11-A	CONTAINS: FCC ID: R17DE910-DUAL IC: 5131A-DE910DUAL 326H12 3A34326H12-A
FCC ID: QZCWWIC3U IC: 4557A-WWIC3U 326H13 3A34326H13-A	FCC ID: QZCWWIC3EV IC: 4557A-WWIC3EV 326H14 3A34326H14-A
FCC ID: QZC-RXUUM IC: 4557A-RXUUM 326H15 3A34326H15-A	FCC ID: QZC-RXUEV IC: 4557A-RXUEV 326H16 3A34326H16-A

PTS. 15 & 16 WERE NOT
 ON. 2/6/14
 CLH 2/6/14
 LEG

RN#ES20100510-01
 IN RIGHT BOTTOM CORNER,
 PARTIAL LABEL NO. WAS
 NOT ON.
 CLH 5/14/10
 L. GRONMEYER 5/14/10

PTS. 11 & 12 WERE NOT
 ON. 9/26/13
 CLH 9/26/13
 L. GRONMEYER 9/26/13

PTS. 13 & 14 WERE NOT
 ON. 11/26/13
 CLH 11/26/13
 L. GRONMEYER 11/26/13



CAD DWG NO. ACD14075
 REFERENCE DWG.

DRAFTSMAN DATE
 A. DOBY 11-20-95

APPROVED DATE
 A. H. MAXWELL 11-20-95

RNE97120503 05
 THE FCC REG. NO. WAS
 403 (ZERO) INSTEAD OF 403
 (LETTER O). 12-10-97
 A. DOBY
 J.M. KENNON 12-10-97

PTS. 3 & 4 WERE NOT
 ON. 1-27-99
 DTB 1-28-99
 WPD

PTS. 5 & 6 WERE NOT
 ON. 07-10-03
 A. DOBY 07-10-03
 R.T. MASON 07-10-03

RN#E05040601 08
 PLS DESCRIPTION WAS US
 COLLECTION LABEL. P1-6
 DESCRIPTION LABEL. P1-6
 COLLECTOR LABEL. DWG. TITLE
 WAS FCC LABEL. 4/11/05
 DTB 4/11/05
 DMC

PTS. 7 & 8 WERE NOT
 ON. 02/23/10
 RSB L. GRONMEYER 02/23/10

PTS. 9 & 10 WERE NOT
 ON. 3/18/10
 CLH L. GRONMEYER 3/18/10

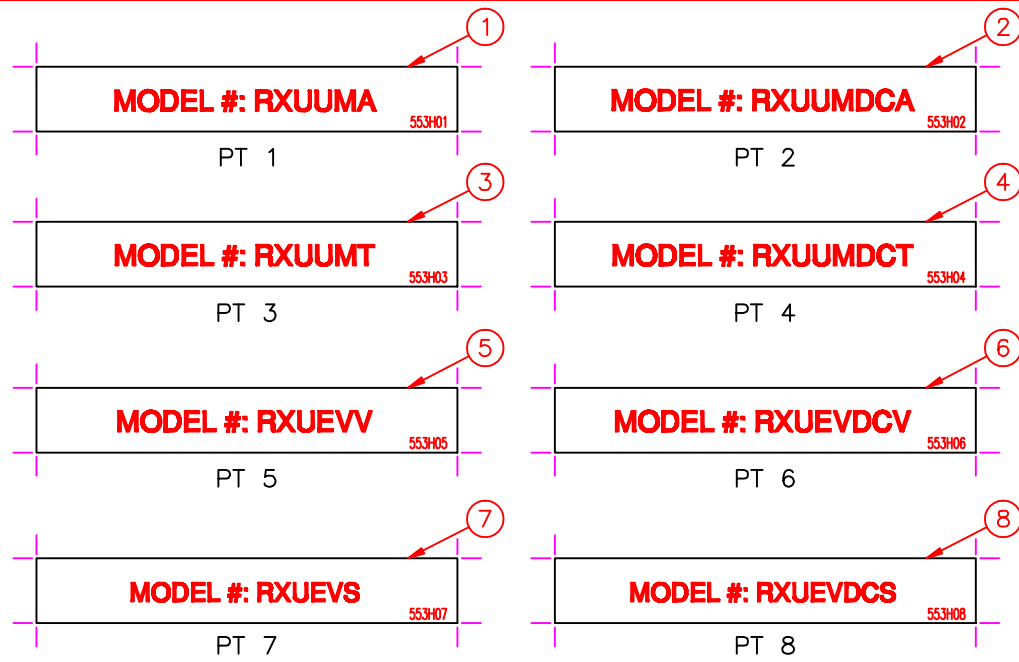
RN#ES20100428-02 11
 PT 10 IC # WAS 36510-
 Q2687, FCC ID WAS O9EQ2687.
 RSB 05/05/10
 L. GRONMEYER 05/05/10

Elster Solutions, LLC
 Raleigh, N.C.

TITLE
 MODEM NAMEPLATE LABEL

SIZE A UNSPEC'D TOL. DWG NO. 3A34326 REV 15
 X.XX±.010 X.XXX±.005
 ANGLES ±1'

SCALE 2:1 NOTE: DRAWING DIMENSIONED IN INCHES SHEET 1 OF 1



SYM	PT.	PART - DESCRIPTION - MATERIAL	FINISH NO. ELSTER REF.	MATERIAL NO. ELSTER REF.
ABC	1	REXU, UMTS, AT&T, INTERNAL, MODEL NO. LABEL	SEE NOTE B	SEE NOTE B
ABC	2	REXU W/DISCONNECT, UMTS, AT&T, INTERNAL, MODEL NO. LABEL	SEE NOTE B	SEE NOTE B
ABC	3	REXU, UMTS, T-MOBILE, INTERNAL, MODEL NO. LABEL	SEE NOTE B	SEE NOTE B
ABC	4	REXU W/DISCONNECT, UMTS, T-MOBILE, INTERNAL, MODEL NO. LABEL	SEE NOTE B	SEE NOTE B
ABC	5	REXU, EV-DO, VERIZON, INTERNAL, MODEL NO. LABEL	SEE NOTE B	SEE NOTE B
ABC	6	REXU W/DISCONNECT, EV-DO, VERIZON, INTERNAL, MODEL NO. LABEL	SEE NOTE B	SEE NOTE B
ABC	7	REXU, UMTS, EV-DO, SPRINT, INTERNAL, MODEL NO. LABEL	SEE NOTE B	SEE NOTE B
ABC	8	REXU W/DISCONNECT, EV-DO, SPRINT, INTERNAL, MODEL NO. LABEL	SEE NOTE B	SEE NOTE B

A - BOUGHT OUTSIDE FROM WEB LABEL (612-588-0737).
 B - MATERIAL : WHITE 3-MIL POLYESTER STOCK WITH ACRYLIC ADHESIVE AND 1-MIL POLYESTER OVER COAT.
 C - LABEL SIZE IS 1.625 BY .250.

CAD DWG NO. ACD14074	REFERENCE DWG.	DRAFTSMAN CLH	DATE 2/6/14	DATE 2/6/14
		APPROVED LEG		

Elster Solutions, LLC Raleigh, N.C.			
TITLE REXU WWIC3G MODEL NO. LABEL			
SIZE B	UNSPEC'D TOL. X.XX±.010 X.XXX±.005 ANGLES ±1°	DWG NO. 1B12553	REV 01
SCALE NTS	NOTE: DRAWING DIMENSIONED IN INCHES	SHEET 1 OF 1	

