

Date: 2003-04-16

TEST REPORT

Page 1 of 22

No.: HM109875

FCC PART 15 SUBPART C CERTIFICATION REPORT

FOR LOW POWER TRANSMITTER

TEST REPORT No.: HM109875

Equipment Under Test [EUT]:

Model Number:

Applicant:

FCC ID :

Radio Control System (27MHz)

5009

CONCORD INTERNATIONAL INC.

QYZCC5009

Date: 2003-04-16

TEST REPORT

Page 2 of 22

No.: HM109875

CONTENT:

Cover	Page 1 of 22	
Content	Page 2-3 of 22	
Conclusion	Page 4 of 22	
<u>1.0</u>	<u>General Details</u>	
1.1	Test Laboratory	Page 5 of 22
1.2	Applicant Details Applicant HKSTC Code Number for Applicant Manufacturer	Page 5 of 22
1.3	Equipment Under Test [EUT] Description of EUT operation	Page 6 of 22
1.4	Date of Order	Page 6 of 22
1.5	Submitted Sample	Page 6 of 22
1.6	Test Duration	Page 6 of 22
1.7	Country of Origin	Page 6 of 22
1.8	Additional Information of EUT	Page 7 of 22
<u>2.0</u>	<u>Technical Details</u>	
2.1	Investigations Requested	Page 8 of 22
2.2	Test Standards and Results Summary	Page 8 of 22
<u>3.0</u>	<u>Test Results</u>	
3.1	Emission	Page 9-13 of 22
3.2	Bandwidth Measurement	Page 14-15 of 22

Date: 2003-04-16

TEST REPORT

Page 3 of 22

No.: HM109875

Appendix A

List of Measurement Equipment

Page 16 of 22

Appendix B

Duty Cycle Correction During 100 msec

Page 17-19 of 22

Appendix C

Modification Method

Page 20 of 22

Appendix D

Photographs

Page 21-22 of 22

Date: 2003-04-16

TEST REPORT

Page 4 of 22

No.: HM109875

CONCLUSION

The submitted product was deemed to have **COMPLIED** after modification with the requirements of Federal Communications Commission [FCC] Rules and Regulations Part 15. The tests were performed in accordance with the standards described above and on Section 2.2 in this Test Report.

Verified by

Patrick Wong
for Chief Executive

Date: 2003-04-16

TEST REPORT

Page 5 of 22

No.: HM109875

1.0 General Details

1.1 Test Laboratory

The Hong Kong Standards and Testing Centre Ltd.
EMC Laboratory
10 Dai Wang Street, Taipo Industrial Estate
New Territories, Hong Kong

Telephone: 852 2666 1888
Fax: 852 2664 4353

1.2 Applicant Details

Applicant

CONCORD INTERNATIONAL INC.
ZHONGYUE BUILDING, FENGXIN SECOND ROAD,
CHENGHAI CITY, CHINA

Telephone: 0754-5737481, 5737482, 5737483
Fax: 0754-5737484

HKSTC Code Number for Applicant

COI015

Manufacturer

CONCORD INTERNATIONAL INC.
ZHONGYUE BUILDING, FENGXIN SECOND ROAD,
CHENGHAI CITY, CHINA

Telephone: 0754-5737481, 5737482, 5737483
Fax: 0754-5737484

No.: HM109875

**1.3 Equipment Under Test [EUT]
Description of Sample**

Product: Radio Control System (27MHz)
Manufacturer: Concord International Inc.
Brand Name: N/A
Model Number: 5009
Input Voltage: 12Vd.c ("AA" size battery x 8)

1.3.1 Description of EUT Operation

The Equipment Under Test (EUT) is an Concord International Inc., Radio Control System (27MHz). The transmitter is a 2 button transmitter. The EUT continues to transmit while button is being pressed, Modulation by IC. and tape is pulse modulation.

1.4 Date of Order

2003-02-27

1.5 Submitted Sample(s):

2 Samples per model

1.6 Test Duration

2003-03-18

1.7 Country of Origin

China

Date: 2003-04-16

TEST REPORT

Page 7 of 22

No.: HM109875

1.8 Additional Information of EUT

	Submitted	Not Available
User Manual	<input checked="" type="checkbox"/>	<input type="checkbox"/>
Part List	<input checked="" type="checkbox"/>	<input type="checkbox"/>
Circuit Diagram	<input checked="" type="checkbox"/>	<input type="checkbox"/>
Printed Circuit Board [PCB] Layout	<input checked="" type="checkbox"/>	<input type="checkbox"/>
Block diagram	<input checked="" type="checkbox"/>	<input type="checkbox"/>
FCC ID Label	<input checked="" type="checkbox"/>	<input type="checkbox"/>

Date: 2003-04-16

TEST REPORT

Page 8 of 22

No.: HM109875

2.0 Technical Details

2.1 Investigations Requested

Perform ElectroMagnetic Interference measurement in accordance with FCC 47CFR [Codes of Federal Regulations] Part 15 and ANSI C63.4:2000 for FCC Certification.

2.2 Test Standards and Results Summary Tables

EMISSION Results Summary						
Test Condition	Test Requirement	Test Method	Class / Severity	Test Result		
				Pass	Failed	N/A
Field Strength of Fundamental Emissions & Spurious Emissions	FCC 47CFR 15.227	ANSI C63.4:2000	N/A	<input checked="" type="checkbox"/>	<input type="checkbox"/>	<input type="checkbox"/>
Radiated Emissions, 30MHz to 1GHz	FCC 47CFR 15.209	ANSI C63.4:2000	Class B	<input checked="" type="checkbox"/>	<input type="checkbox"/>	<input type="checkbox"/>
Conducted Emissions on AC, 0.15MHz to 30MHz	FCC 47CFR 15.207	ANSI C63.4:2000	Class B	<input type="checkbox"/>	<input type="checkbox"/>	<input checked="" type="checkbox"/>

Note: N/A - Not Applicable

3.0 Test Results

3.1 Emission

3.1.1 Radiated Emissions

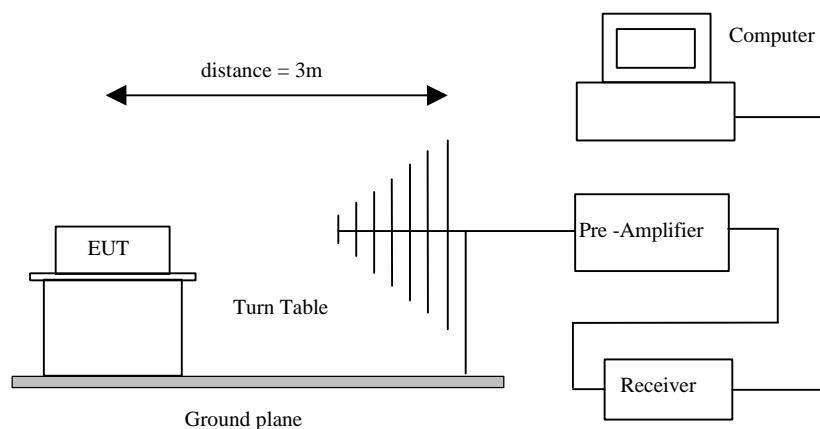
Test Requirement:	FCC 47CFR 15.227
Test Method:	ANSI C63.4:2000
Test Date:	2003-03-18
Mode of Operation:	On mode

Test Method:

The sample was placed 0.8m above the ground plane on the OATS *. Measurements in both horizontal and vertical polarities were performed. During the test, each emission was maximized by: having the EUT continuously working, investigate all operating modes, rotated about all 3 axis (X, Y & Z) to obtain worst position, manipulating interconnecting cables, rotating turntable, varying antenna height from 1m to 4m in both horizontal and vertical polarizations. The emissions worst-case are shown in Test Results of the following pages.

*: OATS [Open Area Test Site] located at HKSTC with a metal ground plane on filed with the FCC pursuant to section 2.948 of the FCC rules, with Registration Number: 90657.

Test Setup:



Limits for Field Strength of Fundamental Emissions [FCC 47CFR 15.227]:

Frequency Range of Fundamental [MHz]	Field Strength of Fundamental Emission [Peak] [$\mu\text{V}/\text{m}$]	Field Strength of Fundamental Emission [Average] [$\mu\text{V}/\text{m}$]
26.96-27.28	100,000	10,000

Results:

Field Strength of Fundamental Emissions Peak Value						
Frequency MHz	Measured Level @3m dB $\mu\text{V}/\text{m}$	Correction Factor dB $\mu\text{V}/\text{m}$	Field Strength dB $\mu\text{V}/\text{m}$	Field Strength $\mu\text{V}/\text{m}$	Limit @3m $\mu\text{V}/\text{m}$	Antenna Polarity
27.15	47.40	22.3	69.7	3,054.9	100,000	Vertical

Field Strength of Fundamental Emissions Average						
Frequency MHz	Measured Level @3m dB $\mu\text{V}/\text{m}$	Correction Factor dB $\mu\text{V}/\text{m}$	Field Strength dB $\mu\text{V}/\text{m}$	Field Strength $\mu\text{V}/\text{m}$	Limit @3m $\mu\text{V}/\text{m}$	Antenna Polarity
27.15	46.9	22.3	69.2	2,884.0	100,00	Vertical

According to FCC 47CFR15.35, the limit on the radio frequency emissions as measured using instrumentation with a peak detector function, corresponding to 20dB above the maximum permitted average limit for the frequency being investigated unless a different peak emission limit is otherwise specified in the rules.

Remarks:

*: Adjusted by Duty Cycle = -0.5dB

*: Linear interpolations

Correction Factor included Antenna Factor and Cable Attenuation.

Calculated measurement uncertainty = 30MHz to 300MHz $\pm 3.7\text{dB}$
300MHz to 1GHz $+3.0\text{dB} / -2.7\text{dB}$

Limited for Radiated Emissions [FCC 47 CFR 15.209 Class B]:

Frequency Range [MHz]	Quasi-Peak Limits [$\mu\text{V}/\text{m}$]
30-88	100
88-216	150
216-960	200
Above960	500

The emission limits shown in the above table are based on measurement employing a CISPR quasi-peak detector and above 1000MHz are based on measurements employing an average detector.

Results :

Radiated Emissions Quasi-Peak						
Frequency MHz	Measured Level @3m $\text{dB}\mu\text{V}/\text{m}$	Correction Factor $\text{dB}\mu\text{V}/\text{m}$	Field Strength $\text{dB}\mu\text{V}/\text{m}$	Field Strength $\mu\text{V}/\text{m}$	Limit @3m $\mu\text{V}/\text{m}$	Antenna Polarity
54.29	25.0	9.8	34.8	55.0	150	Vertical
81.44	14.2	8.9	23.1	14.3	150	Horizontal
108.58	23.4	10.1	33.5	47.3	150	Vertical
135.73	27.2	9.4	36.6	67.6	200	Vertical
162.88	18.3	11.3	29.6	30.2	200	Horizontal
190.02	< 1.0	17.2	< 18.2	< 8.1	200	Vertical
217.17	< 1.0	18.8	< 19.8	< 9.8	200	Vertical
244.31	< 1.0	19.7	< 20.7	< 10.8	200	Vertical
271.46	< 1.0	20.6	< 21.6	< 12.0	200	Vertical

Remarks:

*: Linear interpolations

Correction Factor included Antenna Factor and Cable Attenuation.

Calculated measurement uncertainty = 30MHz to 300MHz $\pm 3.7\text{dB}$
 300MHz to 1GHz $+3.0\text{dB} / -2.7\text{dB}$

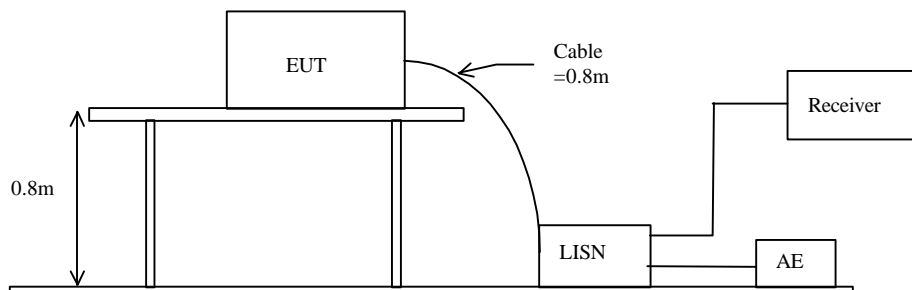
3.1.1 Conducted Emissions (0.15MHz to 30MHz)

Test Requirement:	FCC 47CFR 15.207
Test Method:	ANSI C63.4:2000
Test Date:	2003-03-18
Mode of Operation:	On mode

Test Method:

The test was performed in accordance with ANSI C63.4:2000, with the following: an initial measurement was performed in peak and average detection mode on the live line. Any emissions recorded within 30dB of the relevant limit line were re-measured using quasi-peak and average detection on the live and neutral lines with the worst case recorded in the table of results.

Test Setup:



Date: 2003-04-16

TEST REPORT

Page 13 of 22

No.: HM109875

Limit for Conducted Emissions (FCC 47 CFR 15.207):

Frequency Range [MHz]	Quasi-Peak Limits [dB μ V]	Average [dB μ V]
0.15-0.5	66 to 56*	56 to 46*
0.5-5.0	56	46
5.0-30.0	60	50

* Decreases with the logarithm of the frequency.

Limits for Conducted Emissions Test, please refer to limit lines (Quasi-Peak and Average) in the following diagram labelled as (QP and AV).

Results: N/A

The EUT is operated by internal battery power only, therefore power line conducted emission was deemed unnecessary.

Remarks:

Calculated measurement uncertainty = ± 2.3 dB

3.2 26dB Bandwidth of Fundamental Emission

Test Requirement:	FCC 47 CFR 15.227
Test Method:	ANSI C63.4:2000 (Section 13.1.7)
Test Date:	2003-03-18
Mode of Operation:	On mode

Test Method:

The bandwidth is measured at an amplitude level reduced from the reference level by a specified ratio. The reference level is the level of the highest amplitude signal observed from the transmitter at the fundamental frequency. Once the reference level is established, the equipment is conditioned with typical modulating signal to produce the worst-case (i.e. the widest) bandwidth.

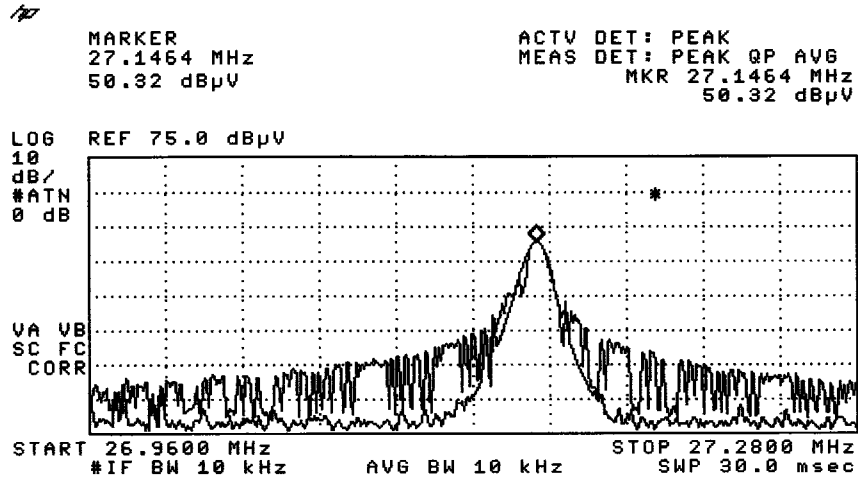
Test Setup:

As Test Setup of clause 3.1.1 in this test report.

Limits for 26 dB Bandwidth of Fundamental Emission:

Frequency Range [MHz]	26dB Bandwidth [KHz]	FCC Limits * [KHz]
27.146	42.6	within 26.96-27.28

26dB Bandwidth of Fundamental Emission



Appendix A**Test Equipment Audit****Radiated Emission**

EQP NO.	DESCRIPTION	MANUFACTURER	MODEL NO.	SERIAL NO.	LAST CAL
EM007	SPECTRUM ANALYZER	HEWLETT PACKARD	HP85660B	3144A21192	14/03/03
EM008	SPECTRUM ANALYZER DISPLAY	HEWLETT PACKARD	HP85662A	3144A20514	14/03/03
EM009	QUASI PEAK ADAPTOR	HEWLETT PACKARD	HP85650A	3303A01702	14/03/03
EM010	RF PRESELECTOR	HEWLETT PACKARD	HP85685A	3221A01410	14/03/03
EM011	ATTENUATOR/SWITCH	HEWLETT PACKARD	HP11713A	2508A10595	14/03/03
EM012	PRE-AMPLIFIER	HEWLETT PACKARD	HP8449B	3008A00262	14/03/03
EM013	CONTROLLER (COMPUTER), COLOR MONITOR, KEYBOARD & MOUSE FLOPPY DRIVE	HEWLETT PACKARD HEWLETT PACKARD HEWLETT PACKARD	HP9000 HP A1097C HP9133L	6226A60314 3151J39517 2623A02468	CM
EM020	HORN ANTENNA	EMCO	3115	4032	19/07/00
EM022	LOOP ANTENNA	EMCO	6502	1189-2424	04/08/00
EM072	SIGNAL GENERATOR	HEWLETT PACKARD	8640B	1948A11892	N/A
EM083	HKSTC OPEN AREA TEST SITE	HKSTC	N/A	N/A	21/03/02
EM131	PORTABLE SPECTRUM ANALYSER	HEWLETT PACKARD	8595EM	3710A00155	18/12/01
EM145	EMI TEST RECEIVER	R & S	ESCS 30	830245/021	22/07/02
EM194	BICONILOG ANTENNA	EMCO	3142B	1795	14/05/02
EM195	ANTENNA POSITIONING MAST	EMCO	2075	2368	N/A
EM196	MULTI-DEVICE CONTROLLER	EMCO	2090	1662	N/A

Conducted Emission

EQP NO.	DESCRIPTION	MANUFACTURER	MODEL NO.	SERIAL NO.	LAST CAL
EM078	VARIAC	SHANGHAI VOLTAGE	TDGC-3/0.5	N/A	CM
EM081	SMALL SCREENED ROOM	MIKO INST HK	N/A	N/A	18/10/02
EM119	LISN	R & S	ESH3-Z5	0831.5518.52	01/10/02
EM127	ISOLATION TRANSFORMER 220 TO 300	WING SUN	N/A	N/A	CM
EM142	PULSES LIMITER	R & S	ESH3Z2	357.8810.52	03/07/02
EM181	EMI TEST RECEIVER	R & S	ESIB7	100072	28/11/01
EM154	SHIELDING ROOM	SIEMENA MATSUSHITA COMPONENTS	N/A	803-740-057- 99A	18/10/02
EM197	LISN	EMCO	4825/2	1193	28/03/02

Remarks:

CM Corrective Maintenance
N/A Not Applicable or Not Available
TBD To Be Determined

Date: 2003-04-16

TEST REPORT

Page 17 of 22

No.: HM109875

Appendix B

Duty Cycle Correction During 100msec

Each function key sends a different series of characters, but each packet period (17.5msec) never exceeds a series of 3 long or short (13.625, 1.125 and 1.75msec) pulses. Assuming any combination of short and long pulses may be obtained due to encoding the worse case transmit duty cycle would be considered $13.625+1.125+1.75\text{msec}$ per $17.5\text{msec}=94.2\%$ duty cycle. Figure A through C show the characteristics of the pulse train for one of these functions.

Remarks:

Duty Cycle Correction = $20\text{Log}(0.942) = -0.5\text{dB}$

No.: HM109875

The following figures [Figure A to Figure D] showed the characteristics of the pulse train for one of these functions.

Figure A [Pulse Train]

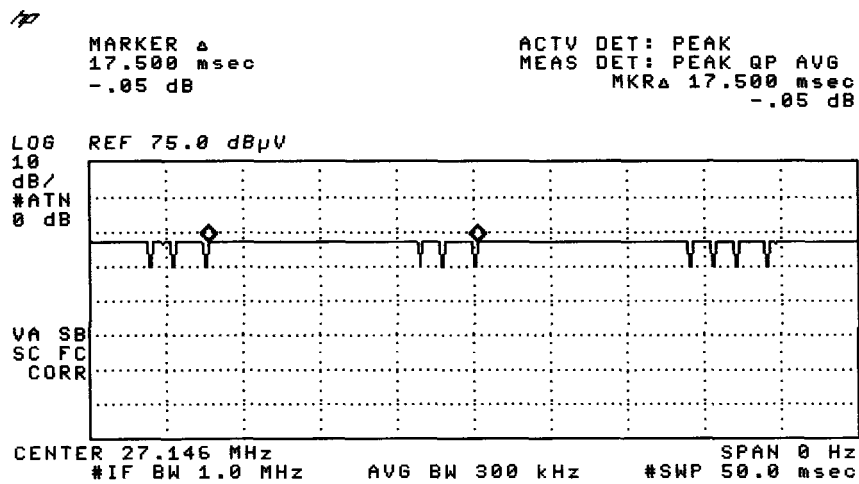


Figure B [Pulse 1]

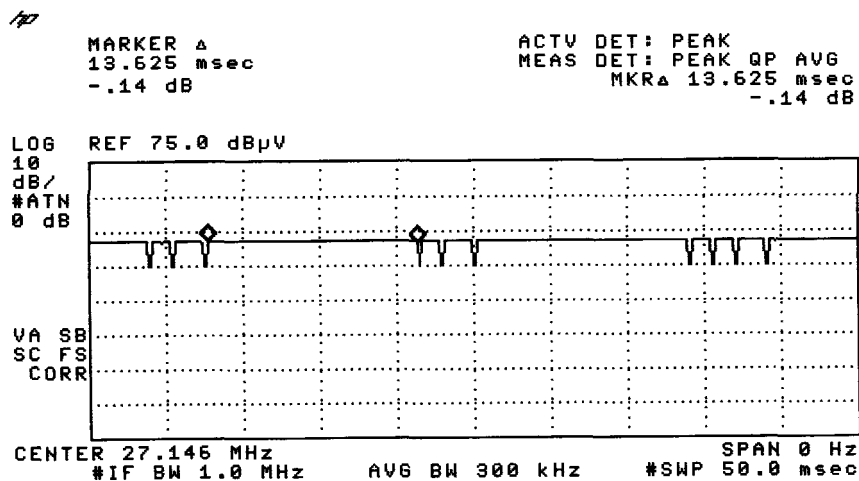


Figure C [Pulse 2]

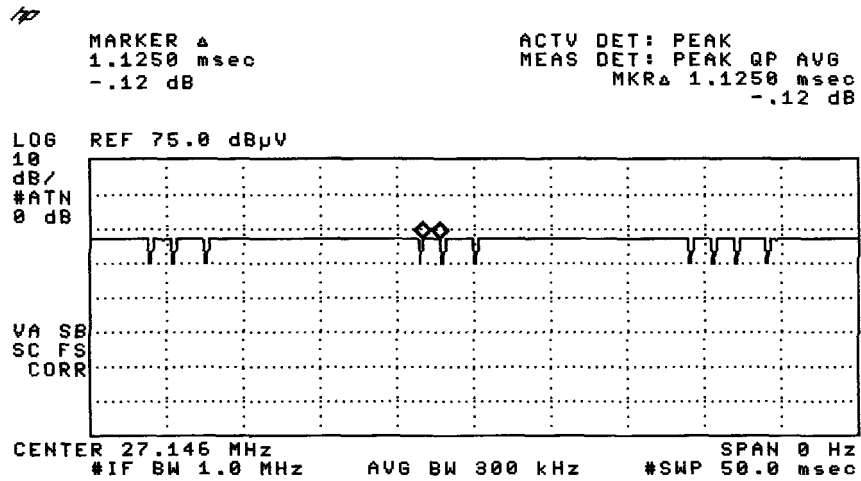
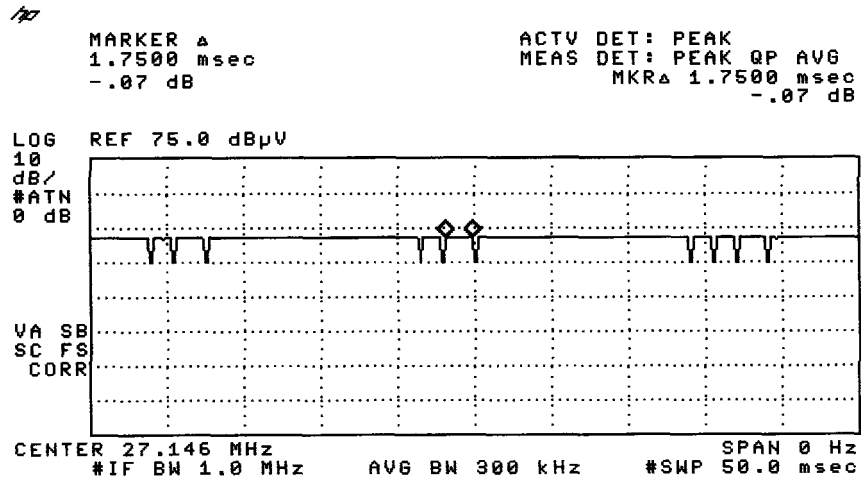


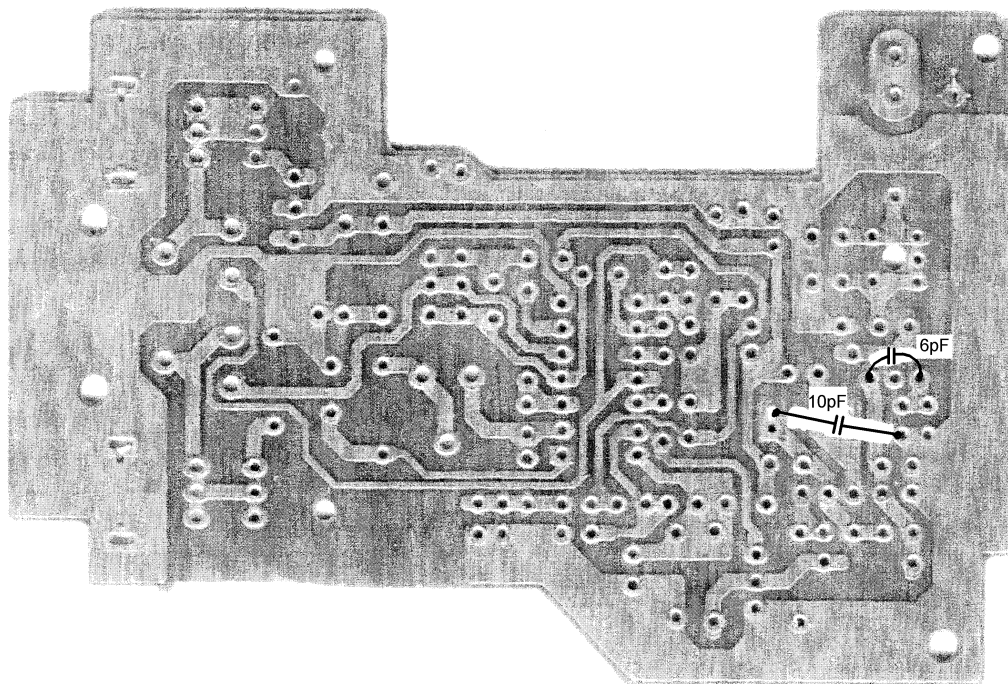
Figure D [Pulse 3]



Appendix C

Modification Method

1. Change the value of R18 from original 0 to 200K
2. Change the value of C17 from original 47pF to 56pF
3. Add a 10pF ceramic capacitor as shown in attached PCB diagram
4. Add a 6pF ceramic capacitor as shown in attached PCB diagram



Appendix D

Photographs of EUT

Front View of the product



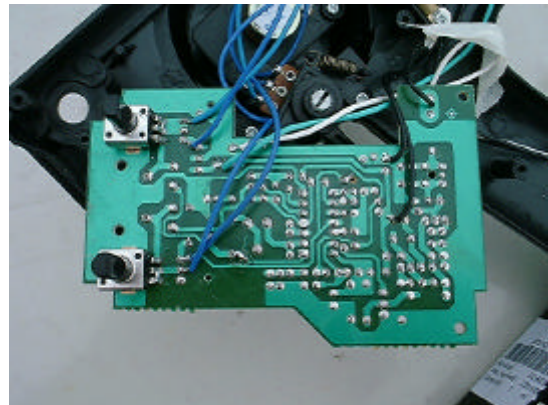
Rear View of the product



Inner Circuit Top View



Inner Circuit Bottom View



Date: 2003-04-16

TEST REPORT

Page 22 of 22

No.: HM109875

Photographs of EUT

Measurement of Radiated Emission Test Set Up



End of Document