

Performance data you can trust.



User Manual



| @flightscope**mevo**

**FCC Statement:** This equipment has been tested and found to comply with the limits for a Class B digital device, pursuant to Part 15 of the FCC Rules. These limits are designed to provide reasonable protection against harmful interference in a residential installation. This equipment generates, uses and can radiate radio frequency energy and, if not installed and used in accordance with the instructions, may cause harmful interference to radio communications. However, there is no guarantee that interference will not occur in a particular installation. If this equipment does cause harmful interference to radio or television reception, which can be determined by turning the equipment off and on, the user is encouraged to try to correct the interference by one or more of the following measures:

- Reorient or relocate the receiving antenna.
- Increase the separation between the equipment and receiver.
- Connect the equipment into an outlet on a circuit different from that to which the receiver is connected.
- Consult the dealer or an experienced radio/TV technician for help.

Changes or modifications not expressly approved by FlightScope (PTY) could void the user's authority to operate the equipment.

**ISED Statement:** This device contains licence-exempt transmitters(s)/receiver(s) that comply with Innovation, Science and Economic Development Canada's licence-exempt RSS(s). Operation is subject to the following two conditions:

- (1) This device may not cause interference.
- (2) This device must accept any interference, including interference that may cause undesired operation of the device.

**Declaration IC:** Cet appareil contient des émetteurs/récepteurs exemptés de licence conformes à la norme Innovation, Sciences, et Développement économique Canada. L'exploitation est autorisée aux deux conditions suivantes:

- (1) L'appareil ne doit pas produire de brouillage.
- (2) L'utilisateur de l'appareil doit accepter tout brouillage radioélectrique subi, même si le brouillage est susceptible d'en compromettre le fonctionnement.

# Contents

In the box	1
Mevo+	2
Battery isolation tab	3
Charging	4
Battery indicators	5
System indicators	6
Get the App	7
Connect to Mevo+	
QR Code	8
Manual	10
Kickstand	11

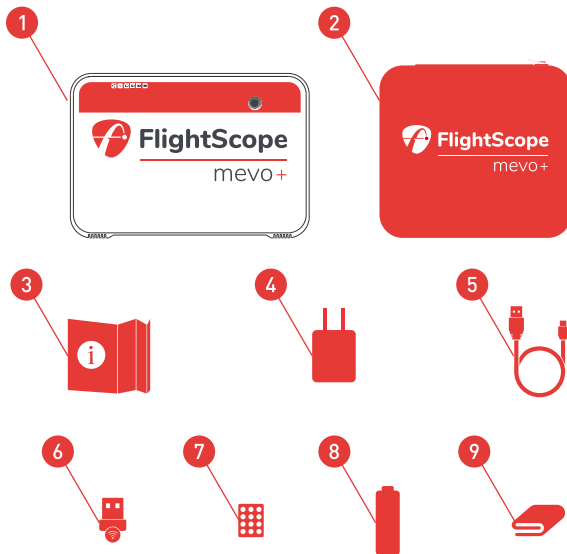
Setup	
Setback	12
Aiming	13
Clearance	14
Tips	15
Indoor spin	17
Indoor ball flight	19
Switch Off	20
Noise	21
Care	24
Avoid	25
Maintenance	
Replace the battery	26
Replace the Wi-Fi Adapter	28
Performance tracking	29
Support details	30
Technical specs	31

## In the box

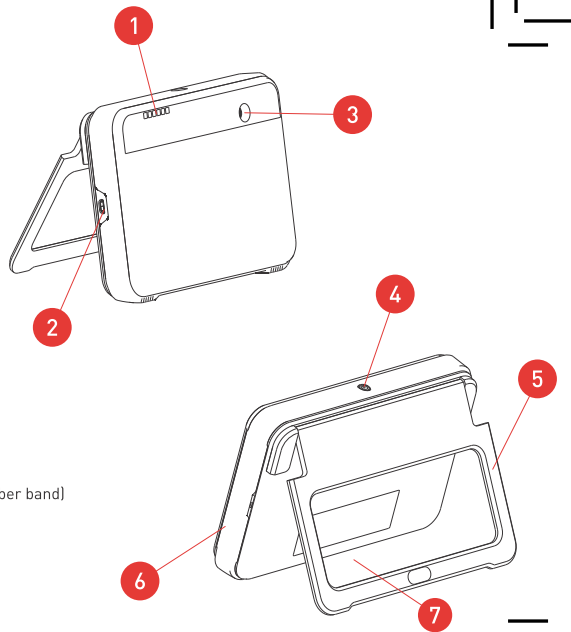
- 1 Mevo+
- 2 Case
- 3 Quickstart Guide
- 4 Charger
- 5 USB charging cable
- 6 WiFi Adaptor\* (fitted)
- 7 Reflective stickers\*\*
- 8 Battery (fitted)
- 9 Cleaning cloth

\* 3rd party Wi-Fi dongle used for connectivity.

\*\* For indoor use only.

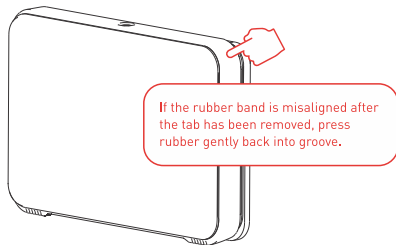
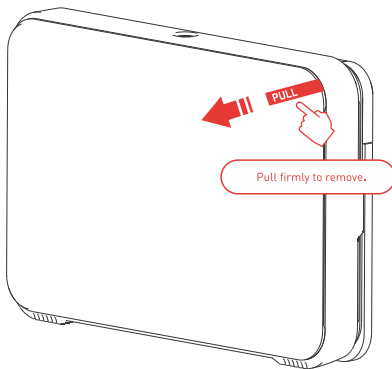


- 1 Indicators
- 2 USB charging port
- 3 Alignment camera
- 4 On/Off button
- 5 Kickstand
- 6 Battery and USB port area (under rubber band)
- 7 Tripod mount (bottom of radar)



# Battery isolation tab

Before using, the battery isolation tab must be removed completely.



# Charging

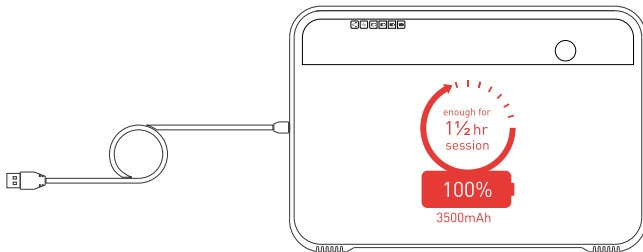
Connect to supplied wall charger  
3-4hrs for a full charge



OR



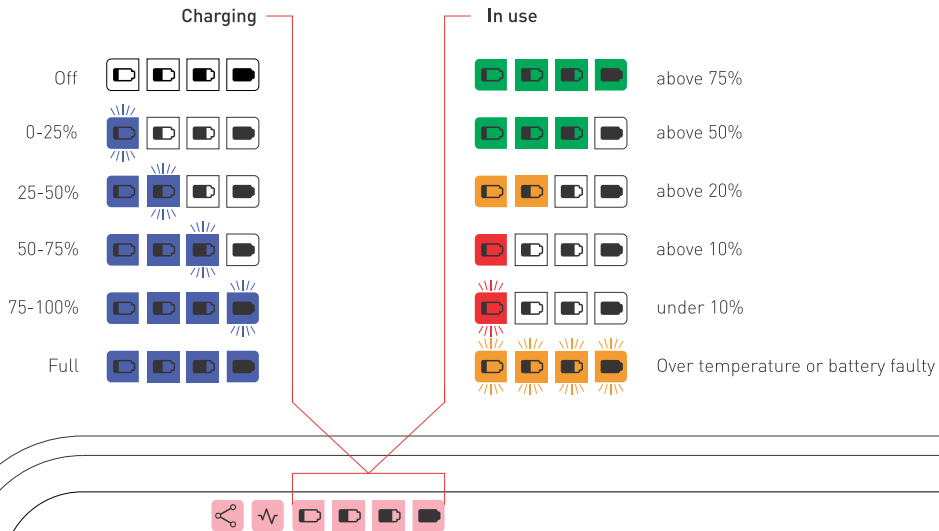
Connect to PC laptop  
up to 12hrs for a full charge



When storing the Mevo+ for longer than 3 months, fully charge the battery and remove from the radar. For instructions on removing the battery, see pg26.



# Battery indicators





# System indicators

## Connection Status

Off



Ready



Connected



## Radar Status



System off



Power on, switching on



Processor start up 30-60 seconds



Standby mode



Armed, ready to measure



Processor shut down 15-30 seconds



Battery empty



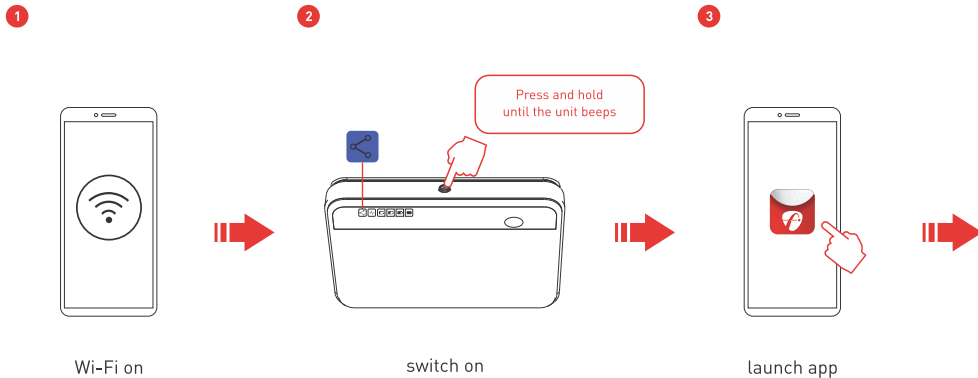
Error



## Get the App

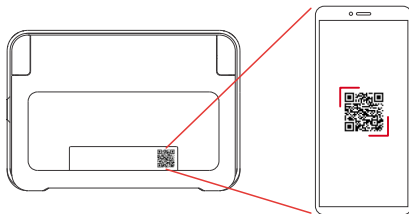


## Connect to Mevo+ with QR code



The username and password you setup  
will be the same for myflightscope.com

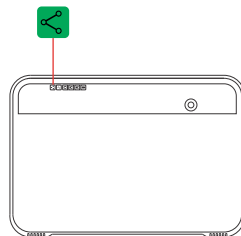
4



in app, scan QR  
code on back of unit



5



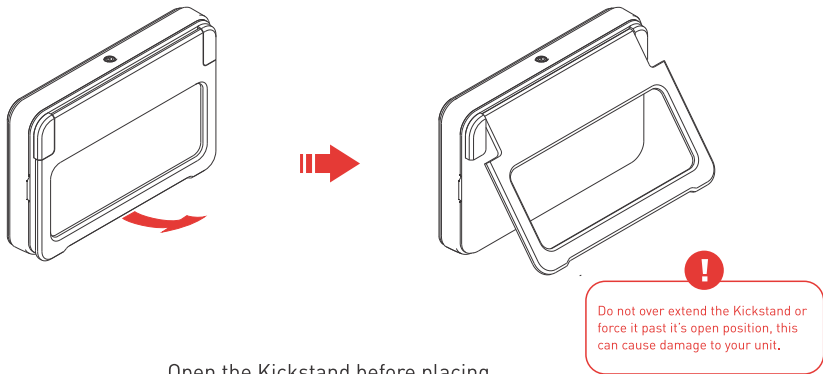
connected

## Connect manually (alternate method)

If you are unable to connect using the QR code, then you can connect manually in your device settings. Take the following easy steps:

- 1 Make sure your phone's Wi-Fi is turned on.
- 2 Press the on/off button on Mevo+, the system and battery lights will come on. The connection light will be solid blue while ready for connection.
- 3 Select Wi-Fi settings on your phone and select Mevo+ with your serial number. The Wi-Fi password is your serial number, for example: M2-123456.
- 4 The connection light on the Mevo+ will turn to solid green when connection has been established.
- 5 Launch the app on your phone and proceed.

## Kickstand

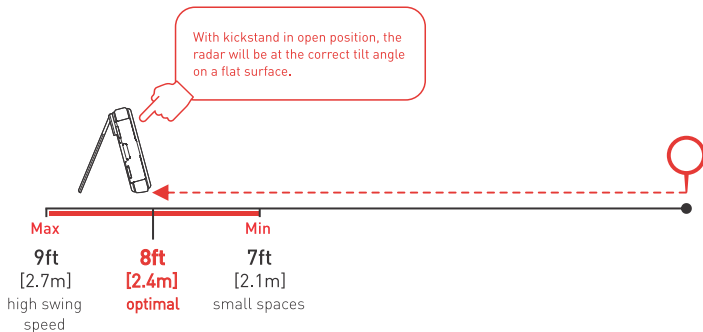


Open the Kickstand before placing.

Kickstand will stop at open position.

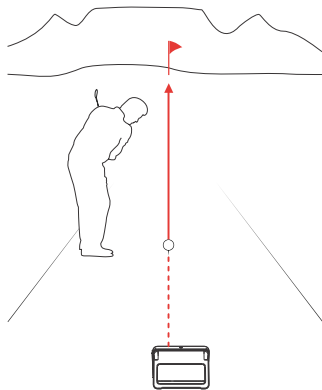
## Setup - Setback

Place Mevo+ behind the ball position. Optimal setup position is 8ft behind the ball. Setup position may be as short as 7ft for smaller spaces. For high swing speed, radar can be moved back to 9ft.

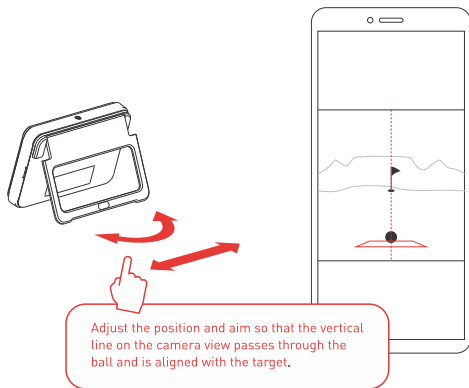


# Aiming

- 1 Place the Mevo+ behind the ball position so that the camera aims along the chosen target line.



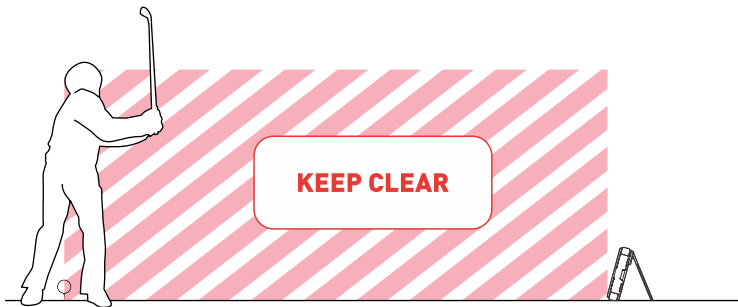
- 2 In the App, follow the instructions using the camera view to align.





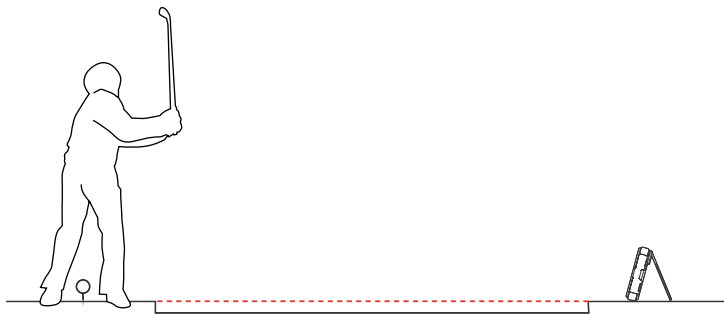
## Clearance

Keep area between Mevo+ and the ball position clear of any objects and people.

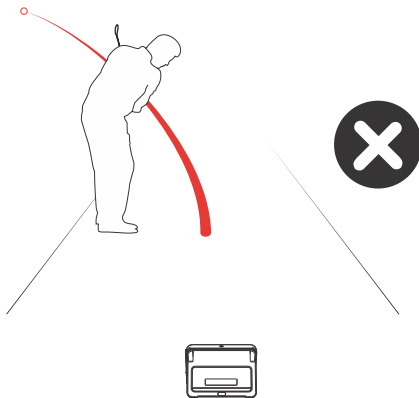


## Tips

For accurate tracking Mevo+ must be approximately level with the ball launch position.



Extremely low and wide shots, and shots where the player is between the Mevo+ and the ball, may not be displayed.



## Indoor spin

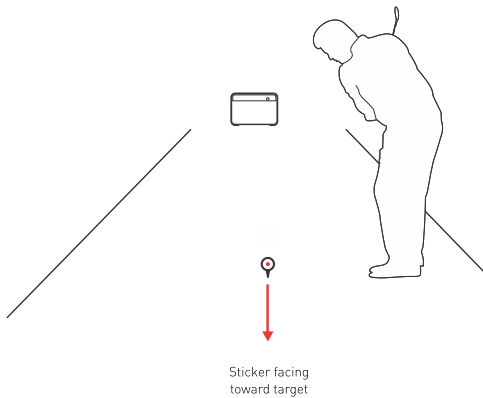
For the best spin accuracy indoors, place a reflective sticker on the ball. This is optional.

**Spin accuracy without a reflective sticker is well within acceptable levels.**



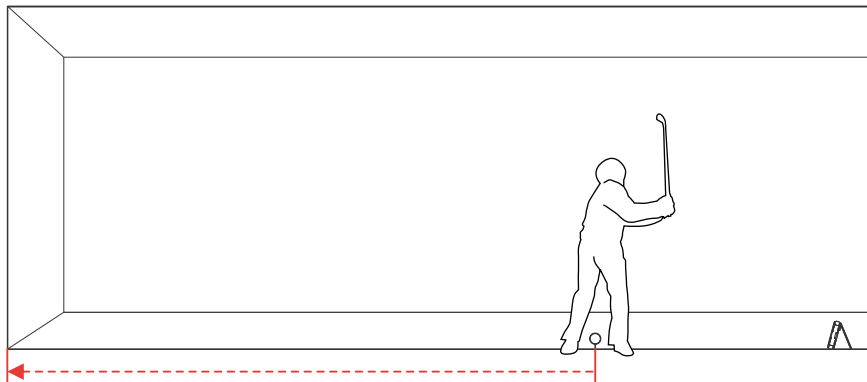
To order additional stickers: go to [flightscope/product-category/accessories/](https://flightscope.com/product-category/accessories/)

On the indoor tee, aim the sticker directly away from the Mevo+.



# Indoor ball flight

When hitting indoors a minimum of 9ft (2.7m) of flight is required.

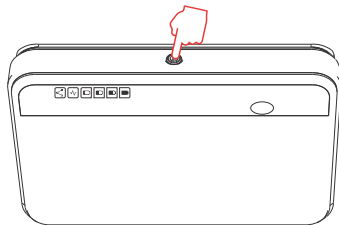


9ft

[2.7m]

min indoor ball flight

## Switch off



Press and hold to turn off, unit will beep to confirm.

When all indicators are off, the unit is off.

# Noise

Mevo+ is designed to operate in most environments. However certain objects in the environment can create noise that can interfere with tracking.

Some common noisy objects are:



aircon



fluorescent  
lights



fans



tv's, laptops &  
desktop computers



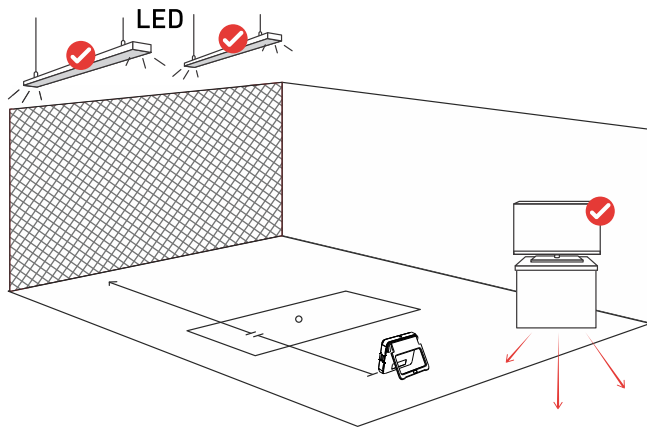
fridges



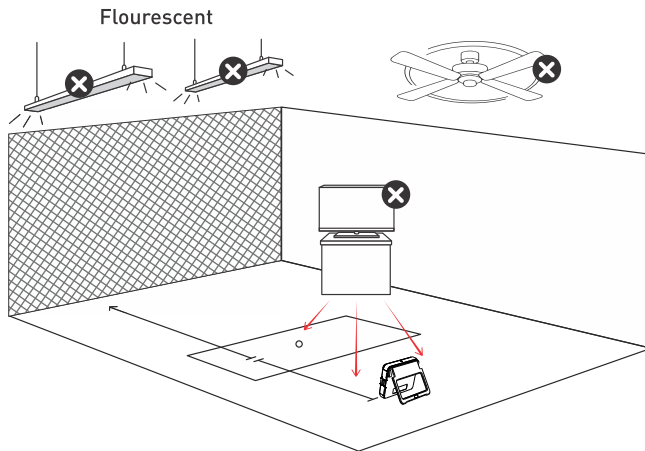
signal  
towers

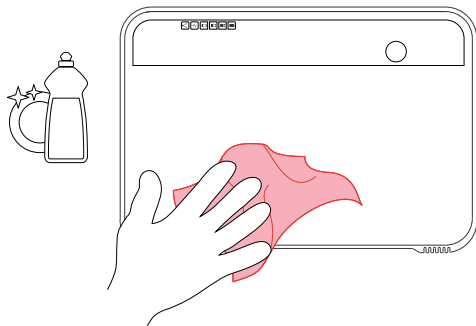


Keep area clear of possible noise interference. Make sure to move noisy electronic devices behind the unit.



Noisy electronic devices in front of the unit will cause poor tracking performance.





Clean with a damp cloth and  
light household detergent



Store in case

# Avoid



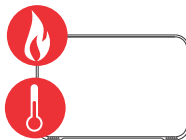
Moisture, including rain



Physical impact



Internal water damage



Flames and heat  
(not sunlight)



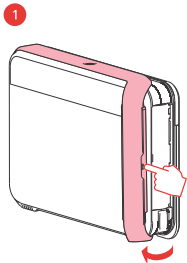
Excessive weight loading



Solvent Chemicals

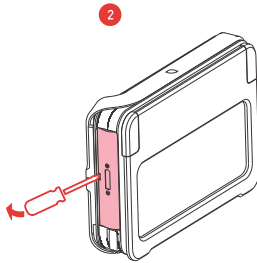
## Maintenance - replace the battery

The Mevo+ comes with a rechargeable battery which will only need to be changed approximately once every three years.

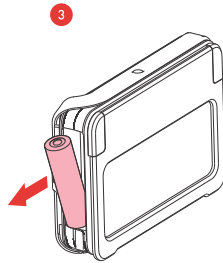


Flex open rubber

Rubber is adhered to the battery cover, you will need to peel the rubber back.



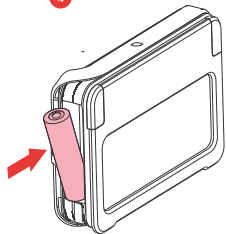
Use a small flat screwdriver to pop open the battery cover



Remove battery using screwdriver



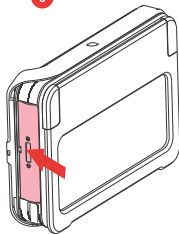
4



Replace battery



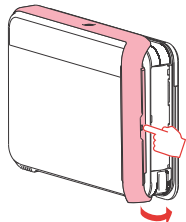
5



Replace battery cover



6



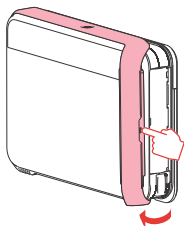
Reposition rubber  
over battery cover



# Replacing the Wi-Fi adapter

The Mevo+ comes with a Wi-Fi adapter that is fitted. Should the Wifi adapter be faulty, it can be replaced by following these instructions.

1

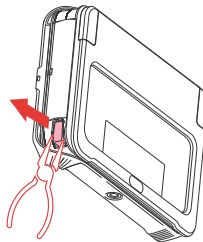


Flex open rubber

Rubber is adhered to the battery cover, you will need to peel the rubber back.



2



Grip the corner of the adapter and pull to remove

## Performance tracking

To track your performance, go to:





## Support

For more help go to:

---

[support@flightscopemevo.com](mailto:support@flightscopemevo.com)

# Technical Specs

## transceiver

operating frequency *	24.08 - 24.16 GHz (nominal)
output power [EIRP]	24dBm +/- 3dBm USA 17dBm +/-3dBm EU

\* Other frequencies ranges may apply in certain countries

## electrical, physical, and general

operating temperature	0°C to 40°C / 32°F to 100°F
dimensions	6.8" x 1.2" x 4.6" / 174 x 31 x 118mm (W x D x H)
mass	1lb / 465g
power supply	5V DC +/- 5%; <2 A
battery	Rechargeable Li-ion Battery, 3.6V, 3500mAh 12.6Wh
camera	5MP
data interfaces	USB 2.0



# FlightScope<sup>®</sup>

---

Performance data you can trust

[flightscopemevo.com](https://flightscopemevo.com)

| [myflightscope.com](https://myflightscope.com)



# FlightScope®

Performance data you can trust

## Quickstart Guide

Full user manual available online at  
[www.flightscope.mevo.com](http://www.flightscope.mevo.com)

**FCC Statement:** This equipment has been tested and found to comply with the limits for a Class B digital device, pursuant to Part 15 of the FCC Rules. These limits are designed to provide reasonable protection against harmful interference in a residential installation. This equipment generates, uses and can radiate radio frequency energy and, if not installed and used in accordance with the instructions, may cause harmful interference to radio communications. However, there is no guarantee that interference will not occur in a particular installation. If this equipment does cause harmful interference to radio or television reception, which can be determined by turning the equipment off and on, the user is encouraged to try to correct the interference by one or more of the following measures:

- Reorient or relocate the receiving antenna.
- Increase the separation between the equipment and receiver.
- Connect the equipment into an outlet on a circuit different from that to which the receiver is connected.
- Consult the dealer or an experienced radio/TV technician for help.

Changes or modifications not expressly approved by FlightScope (PTY) could void the user's authority to operate the equipment.

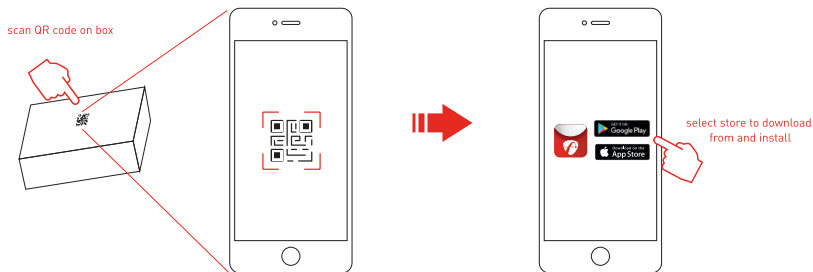
**ISED Statement:** This device contains licence-exempt transmitters(s)/receiver(s) that comply with Innovation, Science and Economic Development Canada's licence-exempt RSS(s). Operation is subject to the following two conditions:

- (1) This device may not cause interference.
- (2) This device must accept any interference, including interference that may cause undesired operation of the device.

**Declaration IC:** Cet appareil contient des émetteurs/récepteurs exemptés de licence conformes à la norme Innovation, Sciences, et Développement économique Canada. L'exploitation est autorisée aux deux conditions suivantes:

- (1) L'appareil ne doit pas produire de brouillage.
- (2) L'utilisateur de l'appareil doit accepter tout brouillage radioélectrique subi, même si le brouillage est susceptible d'en compromettre le fonctionnement.

## 1. Download and install the Mevo+ App.



Track performance on [myflightscope.com](https://myflightscope.com) and please **share your results** and tag us on social media.

   | @flightscope**mevo**

## 2. Charge your Mevo+

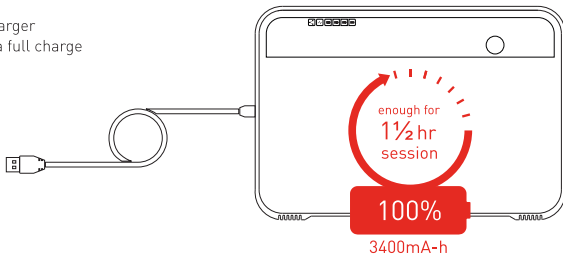
Connect to wall charger  
Just over 2hrs for a full charge



OR



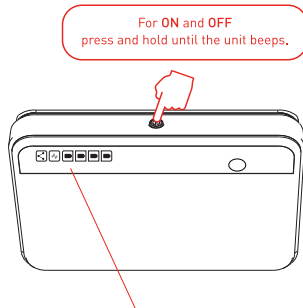
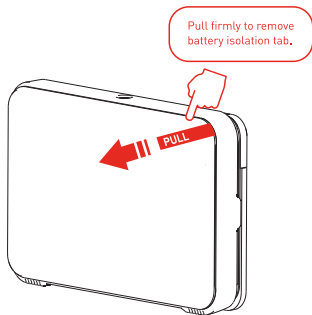
Connect to PC/Laptop USB port,  
10 -12hrs for a full charge



For more detailed information refer to the online Mevo+ manual at [www.flightscopemevo.com](http://www.flightscopemevo.com).



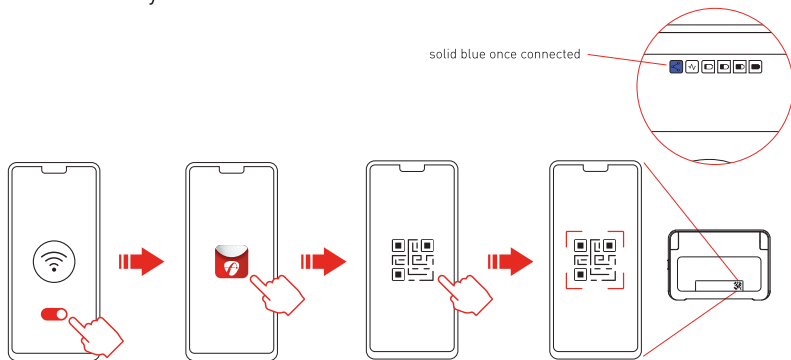
### 3. Switching on and off



When all indicators are off, your Mevo+ is off.

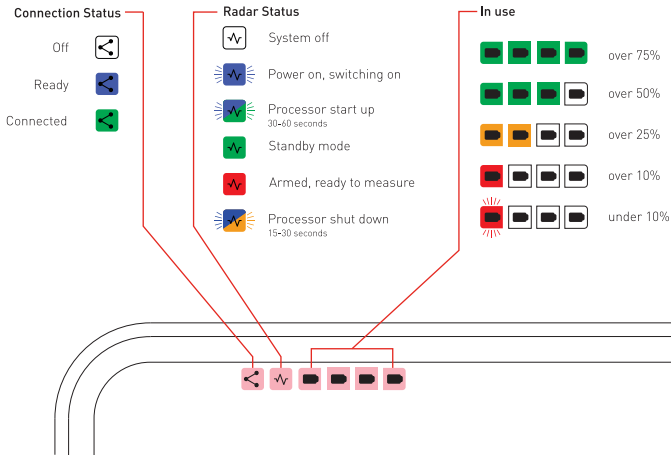


#### 4. Connect to your Mevo+



First time use, or with new phone or reinstalled App, scan QR code on Mevo+ to connect. Next time connection will happen automatically if your mobile device Wifi is switched on.

## 5. Indicators

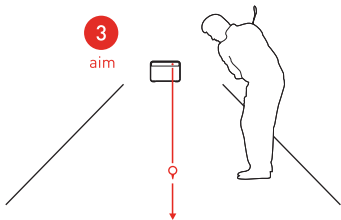


## 6. Place and aim your Mevo+

1  
open



3  
aim



Place the Mevo+ behind the ball position so that camera aims along the chosen target line.

2  
place

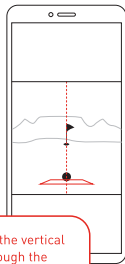


With kickstand in open position, the radar will be at the correct tilt angle on a flat surface.

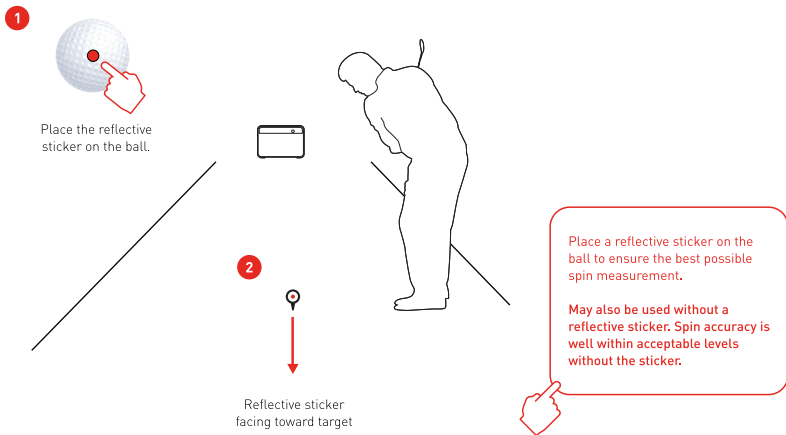
4  
fine aim



Adjust the position and aim so that the vertical line on the camera view passes through the ball and is aligned with the target.



## 7. Reflective Stickers - to measure spin (optional)



## 8. In the box

- 1 Mevo+
- 2 Case
- 3 Quickstart Guide
- 4 Charger
- 5 USB charging cable
- 6 WiFi Adaptor\* (fitted)
- 7 Reflective stickers\*\*
- 8 Battery (fitted)
- 9 Cleaning cloth

\* 3rd party Wi-Fi dongle  
used for connectivity

\*\* For indoor use only.



For more help go to:  
[support@flightscopemevo.com](mailto:support@flightscopemevo.com)