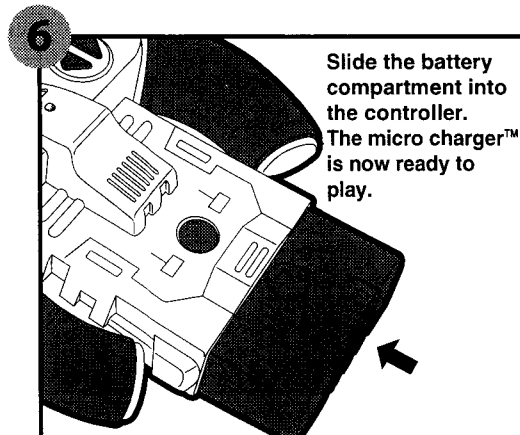
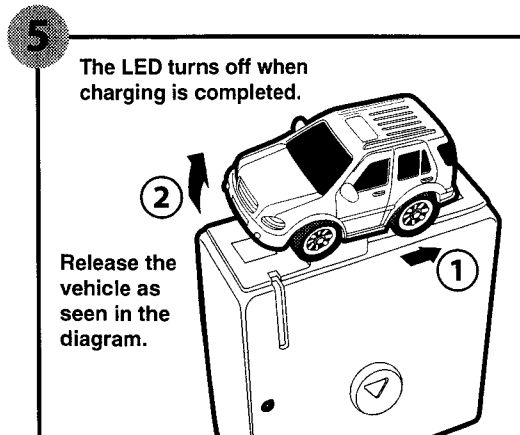
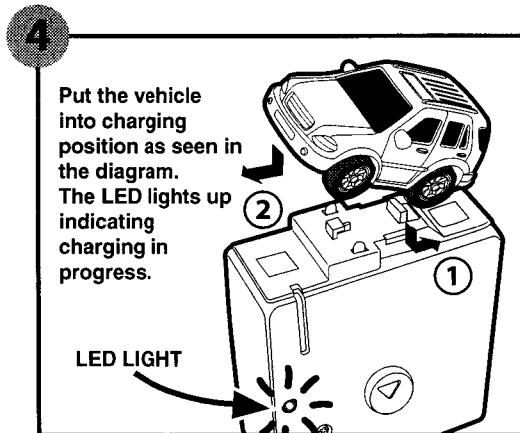
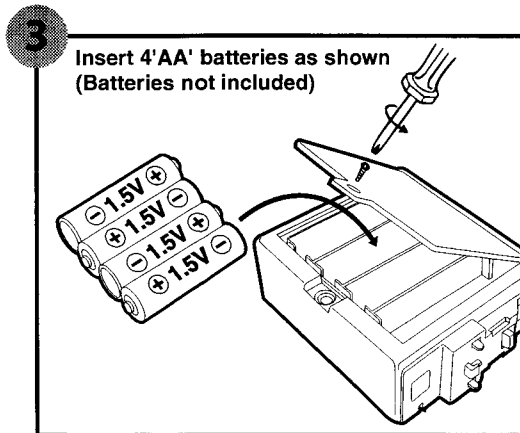
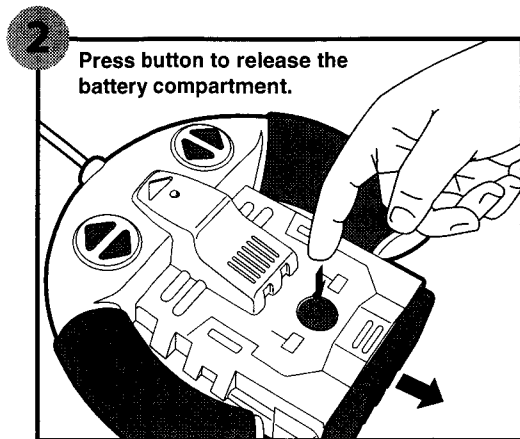
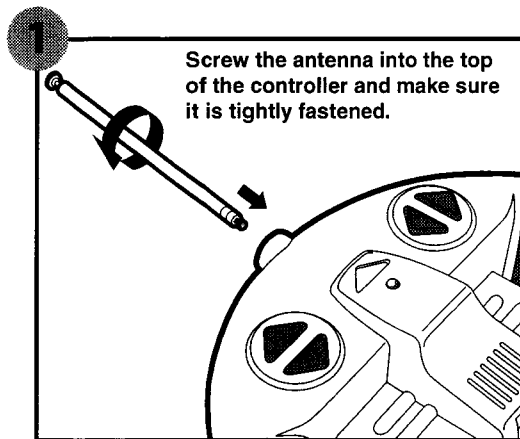
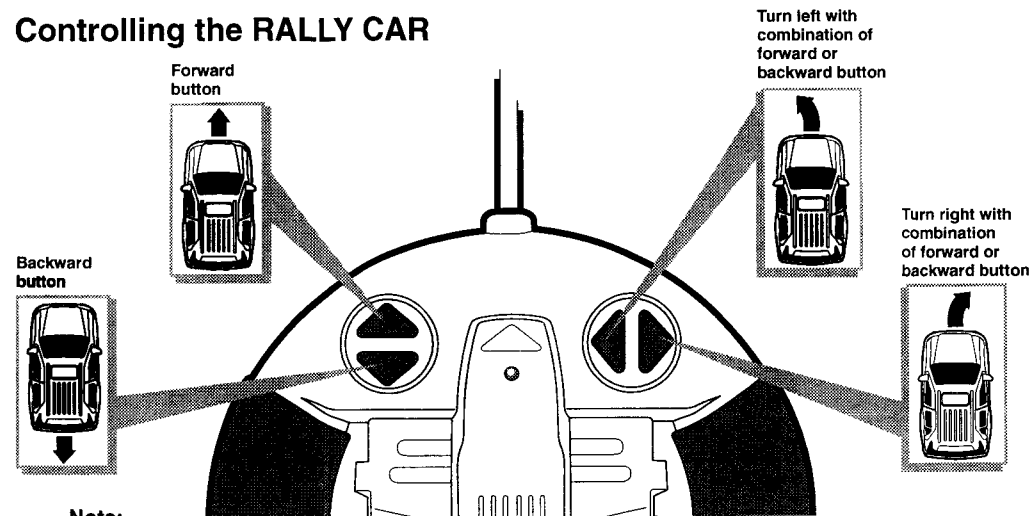


# RADIO CONTROLLED MICRO CHARGER

INSTRUCTION



## Controlling the RALLY CAR



**Note:** LEFT/RIGHT command is only sent if FORWARD/BACKWARD button is also being press at the same time when making the car turn.

This device complies with Part 15 of the FCC Rules. Operation is subject to the following two conditions: (1) This device may not cause harmful interference, and (2) This device must accept any interference received, including interference that may cause undesired operation.

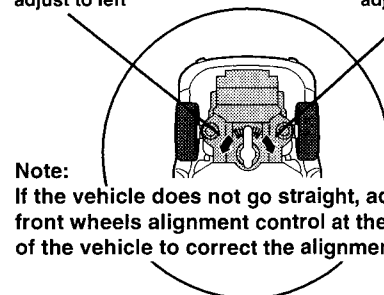
**NOTE:** This equipment has been tested and found to comply with the limits for a Class B digital device, pursuant to Part 15 of the FCC Rules. These limits are designed to provide reasonable protection against harmful interference in a residential installation. This equipment generates, uses and can radiate radio frequency energy and, if not installed and used in accordance with the instructions, may cause harmful interference to radio communications.

However, there is no guarantee that interference will not occur in a particular installation. If this equipment does cause harmful interference to radio or television reception, which can be determined by turning the equipment off and on, the user is encouraged to try to correct the interference by one or more of the following measures:

- Reorient or relocate the receiving antenna.
- Increase the separation between the equipment and receiver.
- Connect one equipment into an outlet on a circuit different from that to which the receiver is needed.
- Consult the dealer or an experienced radio/TV technician for help.

**Warning :** Changes or modifications to this unit not expressly approved by the party responsible for compliance could void the user's authority to operate the equipment.

adjust to left      adjust to right



**Note:** If the vehicle does not go straight, adjust the front wheels alignment control at the bottom of the vehicle to correct the alignment.

- Please keep these instructions for future reference.
- Battery voltage : 6V Use 4 AA(R6) batteries.
- ~ Only batteries of the same type are to be used.
  - ~ Do not mix old and new batteries.
  - ~ Do not mix alkaline and standard (carbon-zinc) batteries.
  - ~ Do not use rechargeable batteries.
  - ~ Do not short circuit the battery terminals.
  - ~ Do not recharge non-rechargeable batteries.
  - ~ Insert batteries in the correct polarity.
  - ~ Remove exhausted (used) batteries from the toy.

**DO NOT DISPOSE OF BATTERIES IN FIRE, BATTERIES MAY EXPLODE OR LEAK.**



Hereby, SOMA INTL. LTD. declares that this MICRO CHARGER™ is in compliance with the essential requirements and other relevant provisions of Directive 1999/5/EC.

