



User's Manual

EMP-ZII



Contents

Before Using

- Preface _ 3
- Precautions _ 4
- Product Features _ 5
- Package Contents _ 6
- Name of Components _ 7
- charging _ 8

Basic Usage

- Power On/Off _ 9
- File Playback/Stop _ 9
- Navigation and Search _10
- Controlling Volume _10
- Screen Reverse _10

Menu Description

- Menu Structure _11
- Icon Description _12~13

Menu Setting

- Play List _14
- Equalizer _14
- Display Type _14
- Language _15
- SYSTEM (BACKLIGHT) _15
- SYSTEM (AUTO PLAY) _15
- SYSTEM(FIMWARE UPGRADE) _16
- SYSTEM(GRAPHIC IMAGE DISPLAY) _16

Option

- Connect to PC _17
- Uploading File _18
- Deleting File _18
- Use Logo Edit _19~22
- Installing device driver _23

Others

- Reset _ 24
- Check Points for Product malfunction _ 24
- Product Specification _ 25
- Total Memory and Available Memory _25
- Product Warranty _ 26

Before Using

■ Preface

- Thank you for choosing this MP3 Player.
- Please read this manual carefully before using the player.
- Please be noted that this user's manual is subject to change without notice for improving product performance.

Before Using

■ Precautions

Please be sure to comply with the following instructions to avoid possible risk or physical damage from carelessness.

1. Safety precautions

- 1) Do not leave the player in the following places.
 - Place with high temperature (over 60°C)
 - Inside the window-closed vehicle
 - Place with high humidity including bathrooms
 - Place exposed to the direct sunlight or close to heating devices
 - Place with much dust
- 2) Do not drop or strike a strong shock.
- 3) Do not disassemble, repair or modify the product at your own discretion.
- 4) Do not use the player in the restricted area like inside the aircraft.
- 5) Excessive shock on LCD panel will cause a break or malfunction.
- 6) Do not use the player while you are driving a car, a motorcycle, or a bicycle. It may be dangerous and may be illegal in some districts.
- 7) It may be dangerous to keep the volume of the headphone high while you are walking on the street.
- 8) Prolonged use of the headphone at a high volume level may hurt your hearing. (If you have a ringing in the ears, turn the volume down or stop using the headphone.)

2. If the battery is totally flat during Playing, the player will be automatically stopped. Make sure to check the available battery capacity before Playing.

Before Using

■ Product Features

- **Small and light necklace type player**

MP3 Player is a charming, ultra compact and ultra-light necklace type MP3 player. with color LCD display

- **No additional batteries required**

Since the unit includes a rechargeable lithium ion battery, additional batteries are not needed. The unit is therefore easy to use and carry.

- **Graphic color LCD**

Pictures such as logos, images or photographs can be displayed in the LCD window using the Logo Editor. (However, compressed BMP files are not supported.)

- **5 equalizer bars**

You can enhance your music listening by selecting the tone color (timbre) from either Normal, Classic, Rock, Pop or Live.

Package Contents

■ Player



■ Accessories



Sterep Earphone



USB Cable



Priver(win98)

Logo Editor

User's Manual



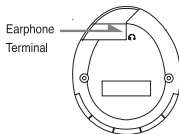
Quick guide

Display

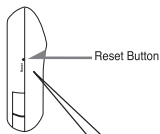
■ Player



LCD Display

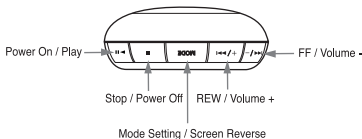


Earphone
Terminal

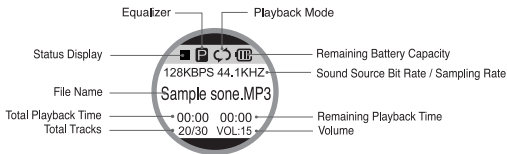


Reset Button

※ Reset button: use it in case of incomplete LCD display or malfunction



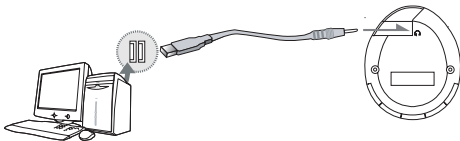
■ LCD




Recharging

■ Charging using the USB Cable

1. Connect the plug of the provided USB cable to the unit.
2. Connect the other end of the USB cable to the PC as illustrated in the figure below. The unit is connected as an additional disc drive in My Computer of the PC and starts recharging immediately. (recharging takes about two and a half to three hours in a Low Battery state.)



● Charge the battery quickly

When the Battery icon  is displayed during playback, recharge the battery immediately. When the battery is empty, the Low Battery message is displayed and the power is then automatically turned off.



Recharging is in progress.



Recharging is completed

● Option

You can recharge the battery using a DC adapter.

Basic Usage

■ Power on/off



• Power ON

1. Power is turned on if you press the PLAY button for longer than two seconds.



• Power OFF

1. Power is turned OFF if you press the STOP button for longer than two seconds. (Note) If no button is pressed for three minutes in stop mode, power is automatically turned off. * The auto power off function

■ File Playback / Stop

• Playback

1. To play a file, press the PLAY button after turning the power on.

(Note) If you press the PLAY button during playback, playback will pause. Press the PLAY button again to resume playback.



• Stop

1. If you press the STOP button during playback, playback will stop.



Basic Usage

■ Navigation and Search

• File Search



1. Search for a file by pressing the FF / REW buttons. Then press the PLAY button to play the file. (Note) You can navigate by pressing the FF / REW buttons even during playback.



• Location Search

1. You can press the FF or REW buttons until you find the location you want. If you release the FF or REW buttons at that location, playback will start from that location.

■ Volume Control



• Volume + / -

1. Press the MODE button once during playback. Then press the - / + buttons to change the volume.
2. If you press the MODE button again, the - / + buttons revert to the FF / REW buttons.



(Note) The volume will increase/decrease by one unit if you press the button once, whereas it will continuously increase/decrease if you hold the button down.

* The volume range is from 0 to 40.

■ Screen Reverse



1. If you hold down the MODE button in stop mode, the upper and lower parts of the screen will be swapped.

Menu Description

■ Menu Structure



REPEAT



REPEAT NORMAL



REPEAT ONE



REPEAT ALL



EQUALIZER



EQ NORMAL



EQ POP



EQ LIVE



EQ ROCK



EQ CLASSIC



DISPLAY TYPE



FILE NAME



TAG INFO



LANGUAGE



ENGLISH



KOREAN



JAPANESE



TRAD. CHINESE



SIMP. CHINESE



RUSSIAN



SYSTEM



BACKLIGHT



AUTO PLAY



FIRMWARE
UPGRADE



GRAPHIC IMAGE DISPLAY



RETURN



EXIT



Menu Description

■ Icon Description



REPEAT: Set the repeated file playback.



Plays back entire files sequentially once.



Repeats one file selected.



Plays the entire list sequentially and repetitively.



EQUALIZER: You can enjoy various tones of genre.



EQ NORMAL

Selects normal tone



EQ POP

Selects pop tone



EQ LIVE

Selects live tone



EQ ROCK

Selects rock tone



EQ CLASSIC

Selects classic tone



DISPLAY TYPE: Selects the title of the playback file
- file name or ID3 tag.



FILE NAME

Displays the file name



TAG INFO

Displays the tag information (If the tag information is not available, the file name will be displayed)



LANGUAGE: Sets the encoding (selecting languages used to display ID3 tags).



ENGLISH

Sets English as a tag language.



KOREAN

Sets Korean as a tag language.



JAPANESE

Sets Japanese as a tag language.



TRAD. CHINESE

Sets Traditional Chinese as a tag language.



SIMP. CHINESE

Sets Simplified Chinese as a tag language.



RUSSIAN

Sets Russian as a tag language.

Menu Description

■ Icon Description



SYSTEM : Sets various functions of the player



BACKLIGHT : Sets the backlight time.
(Selecting one of off, 3,5,10,15 seconds or always)



Sets the playback status when the power is on
(Automatic playback or stop).



FIRMWARE UPGRADE



Graphic Image Display: Selects a method of displaying an image to the LCD window.



RETURN : Returns to top menu.



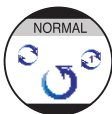
EXIT :

Mode Menu Description

■ Menu Setting

Press the MODE button ➡ Move to an item by pressing the FF / REW buttons

➡ Press the PLAY button to set up the menu



● Playback Setting

1. Select [MENU] - [REPEAT].
2. Press the FF / REW buttons to move to an item (NORMAL, REPEAT ONE or REPEAT ALL). Press the PLAY button to select the item.



● Equalizer

1. Select [MENU] - [EQUALIZER].
2. Press the FF / REW buttons to select the tone color (timbre) (NORMAL, POP, ROCK, CLASSIC or LIVE). Press the PLAY button to select the tone.



● Display Setting

1. Select [MENU] - [DISPLAY TYPE].
2. Press the FF / REW buttons to move to an item (FILE or TAG). Press the PLAY button to select the item.

Mode Menu Description



• LANGUAGE

1. Select [MENU] - [LANGUAGE].
2. Press the FF / REW buttons to move to an item (ENGLISH, KOREAN, JAPANESE, SIMP. CHINESE, TRAD. CHINESE or RUSSIAN). Press the PLAY button to select the item.



• SYSTEM (BACKLIGHT)

1. Select [MENU] - [SYSTEM] - [BACKLIGHT].
2. Press the FF / REW buttons to move to a time (3/5/10/15 SECONDS/ALWAYS ON). Press the PLAY button to select that time.



• SYSTEM (AUTO PLAY)

This feature automatically performs playback when the power is turned on.

1. Select [MENU] - [SYSTEM] - [AUTO PLAY].
2. Press the FF / REW buttons to move to an item. Press the PLAY button to select the item.

Mode Menu Description



● SYSTEM (FIRMWARE UPGRADE)

This feature upgrades the firmware (www.eratech.co.kr).

1. This feature copies the firmware from the homepage to the root directory of the digital audio player.
2. Select [MENU] - [SYSTEM] - [FIRMWARE].
(Refer to the NOTICE on our homepage about FIRMWARE UPGRADES.)

< Notice >

Verify that the remaining battery capacity is sufficient before executing a FIRMWARE UPGRADE. When the unit malfunctions during a FIRMWARE UPGRADE, quickly refer to qualified personnel about servicing the unit.



● SYSTEM (GRAPHIC IMAGE DISPLAY)

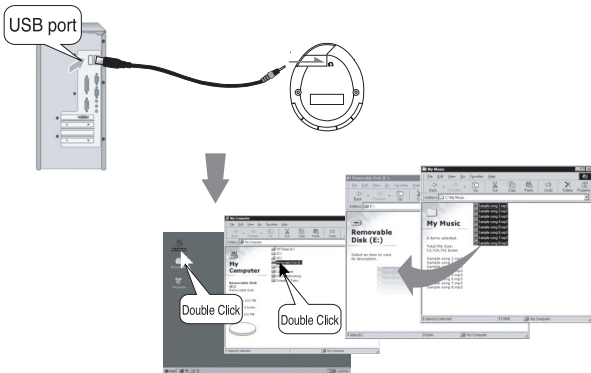
This feature selects an image output, an image & text output or a text output to the LCD window during playback.

1. Select [MENU] - [SYSTEM] - [SHOW IMAGE].
2. Press the FF / REW buttons to move to an item. Press the PLAY button to select the target item.

Connect to PC

■ Connecting to a PC Using a USB Cable

If you connect the USB cable between MP3 Player and you PC, you can either copy MP3 Player and other files to saved in MP3 Player to your PC.



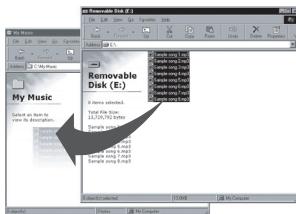
1. Connect the USB cable to the earphone jack of the MP3 Player.
2. Connect the USB cable to a USB port on the PC.
3. Double-click the "My Computer" icon on your desktop.
4. Double-click the "Removable Disk".
5. Select the file that you want to transfer from your PC and drag it to the player.

Don't plug off the MP3 Player when displayed "Don't Remove USB" on the LCD your system could be damaged and have instability.

Delete File

■ File Upload

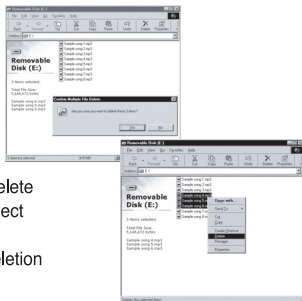
Transfer File in the Player to PC



1. Connect the player to your PC.
2. Select the "Removable Disk" in "My Computer".
3. Select the file that you want to transfer to your PC and drag and drop it.

■ File Deletion

Delete File in PC



1. Select the file that you want to delete in the player and right click it; select "Delete" in the file menu.
2. Select [Yes] will show you the deletion process.

Use Logo Editor

Logo Editor is software for editing a logo image that is displayed in the LCD window during playback.

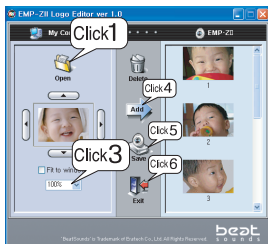
■ Logo Editor Installation

Insert the CD provided when purchasing the unit into the CD-ROM of the PC. Sequentially click on the buttons in the windows as shown below.



Use Logo Editor

■ Using Logo Editor



[Figure 1] Main screen

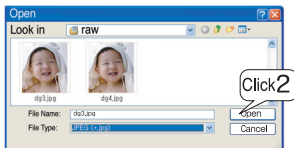
1.Screen Composition

Left window: Appears when an image file on your hard disk drive is opened.

Right window: Shows a list of images which can be used as a logo.

2. Making a New Logo

1) Click on "Open"



2) Select BMP or JPEG as the file type(Compressed BMP files are not supported)

3) Adjust the image size

"Fit to window": Scales an image to fit into the LCD window of MP3 Player.

Set reduction ratio: Reduces an image to a selected ratio.

Using Logo Editor

- **When a selected image is bigger than the LCD window of MP3 Player:**

Select the "Fit to window" option at the bottom of the Preview window to automatically adjust the image size. Alternatively, if you move to a particular area on an image (reduced at a designated ratio or having an original size) using the arrow buttons and then click on "Add", the particular area is added to the list. Click on the arrow icons using the mouse or use the arrow buttons on the keyboard. To move very finely, use the Ctrl key and the arrow keys simultaneously.

- **When a selected image is smaller than the MP3 Player LCD window:**

Select the "Fit to window" option to automatically adjust the image size and then click on "Add" to add the adjusted image to the list. If you click on "Add" without selecting the "Fit to window" option, the image is added to the list after the window margin is filled with white.

4) Arrange a sequence of images

You can arrange a sequence of images that have been added to the window on the right using the "Add" button by changing the position of an image using Drag & Drop. You can remove unnecessary images from the list using the "Delete" button.

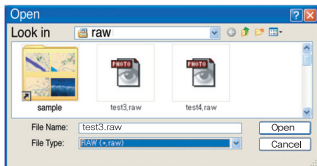
5) Save

After you have completed working on the image list (MP3 Player logo), you can save the image list as a MP3 Player logo file using the "Save" button. You can designate where to save the image list. The root directory of the portable disk for MP3 Player is set by default.

6) Close

Close the program by clicking on "Exit".

Using Logo Editor



3. Opening an Existing File

- 1) Click on "Open"
- 2) Set the "File type" to "RAW (*.raw)" which is the extension for a MP3 Player Logo file, and select a file.
- 3) Perform operations such as arranging a sequence of images and saving in the same manner as you would to create a new logo.

<Note>

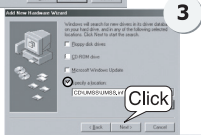
Only when the image files (having "raw" as an extension) created by the logo editor are placed in the root directory of a MP3 Player, are the images displayed normally.

Installing device driver

You do not need to install an additional device driver for this unit in systems with Windows ME, Windows 2000 or higher, or MAC OS 9.2 or higher.

■ Installing a Driver in Windows 98

1. Insert the Installation CD into the CD-ROM of the PC.
2. Connect the USB cable to the digital audio player and to a USB Port on the PC.
3. Click on Next in the window shown below.



Click on End.

Miscellaneous

■ Reset

Use it in case of incomplete LCD display or malfunction

■ Check points for product malfunction

When it falls into the water

Stop using immediately → Disconnect the earphone from the player →

Face the earphone inlet down and then draw water → Contact the service center

When it doesn't playback music

Check the battery status → Check if music files are in the "MUSIC" folder →

Check if the volume is too low

When the charging fails

Check if other devices work thru USB port on the PC.

Check if the unit is connect to the USB port on the PC properly.

Check if PC is on power.

When it doesn't tag information

When the tag information consists only of ID3V1, only the file name is displayed.

Only when the tag information includes ID3V2 is the TAG information displayed normally.

Miscellaneous

■ Product Specification

Frequency range	20Hz ~ 20KHz
Earphone out	7mW + 7mW(16Ω)
PC interface	USB 1.1
System OS	Windows98/ Me/2000/XP
	MAC OS 9.2 or higher
Power	3.7V
Dimension	53(H) x 45(W) x 17(D) mm
Weight	About 25g
Duration	Max 16 Hrs

■ Total Memory and Available Memory

Total Memory	Available Memory
128 MB	121 MB
256 MB	248 MB
512 MB	502 MB

Product Warranty

1. This product is manufactured through strict quality control and the inspection process.
2. If any defect is found under the normal condition, you can receive free repair service at the sales office or the service center during the free warranty period.
3. If product malfunction occurs after the free warranty period, or the repair items belongs to the chargeable service even during the free warranty period, the service can be charged.
 - Malfunction due to user's carelessness.
 - If the user modified the product at his/her own discretion.
 - Natural disasters such as fire, damage from salty wind, flood or earthquake.
4. If you need to repair, please make sure to present this Warranty.
5. This Warranty shall not be issued again. Please keep it safely.

Product Name		BeatSounds		
Model Name		EMP-ZII		
Serial Number				
Customer Contact Information	Name			
	Phone Number			
	Address			
Purchase Date		(YMD)	Warranty Period	1 Year
Manufacturer	Company Name			
	Address			
Distributor	Company Name			
	Address			

FCC Compliance Statements

Note: This equipment has been tested and found to comply with the limits for a Class B digital device, pursuant to part 15 of the FCC Rules. These limits are designed to provide reasonable protection against harmful interference in a residential installation. This equipment generates, uses and can radiate radio frequency energy and, if not installed and used in accordance with the instructions, may cause harmful interference to radio communications. However, there is no guarantee that interference will not occur in a particular installation. If this equipment does cause harmful interference to radio or television reception, which can be determined by turning the equipment off and on, the user is encouraged to try to correct the interference by one or more of the following measures:

- Reorient or relocate the receiving antenna
- Increase the separation between the equipment and receiver.
- Connect the equipment into an outlet on a circuit different from that to which the receiver is connected.
- Consult the dealer or an experienced radio / TV technician for help.

Warning : Your are cautioned that any change or modifications to the equipment not expressly approved by the party responsible for compliance could void your authority to operate such equipment.