

Bluetooth Chip Antenna ANT001-2G450

Applications

The ANT001-2G450 is a small size, LTCC-technology based chip antenna specifically designed for 2450MHz Bluetooth and WLAN applications, etc.

Specifications

Part Number	Band Width	Peak Gain (V-XZ)	Average GAIN (V-XZ)	VSWR (in BW)	Impedance
ANT001-2G450	2400-2500MHz	3.0dBi typ	1.0dBi typ.	< 2	50 Ohm

Operating Temperature Range : -40 ~ +85 °C

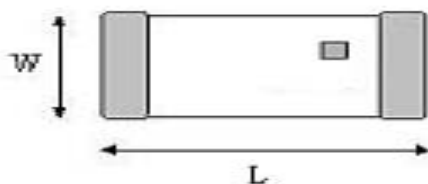
Storage Temperature Range : -40 ~ +85 °C

Power Capacity: 3W max.

Outline and Dimensions

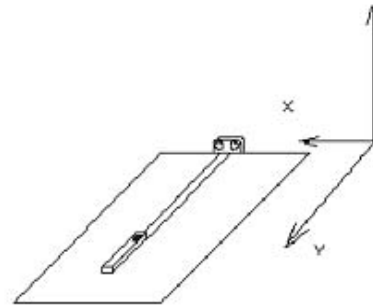
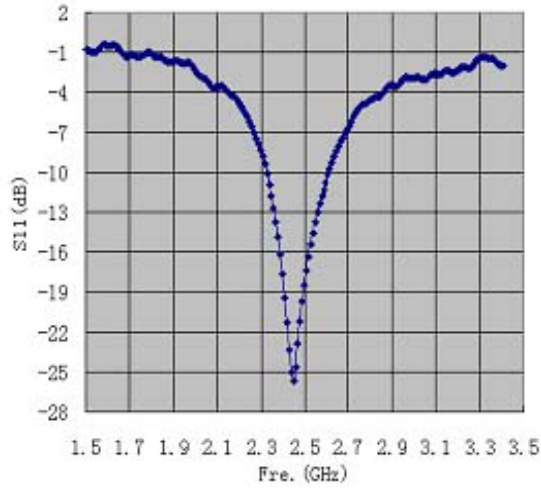
(unit: mm)

(1)	NC
(2)	Feeding Point

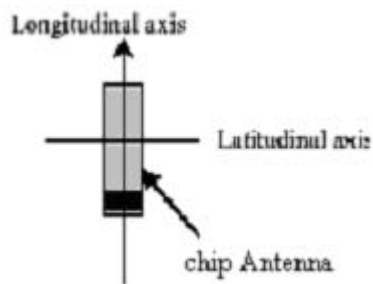


Mark	W	L	T	S
Dimension	2.0±0.2	9.0±0.2	1.0±0.1	0.3±0.2

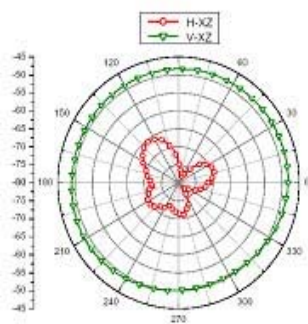
Return Loss



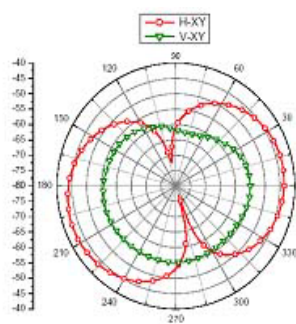
Directivity Chart



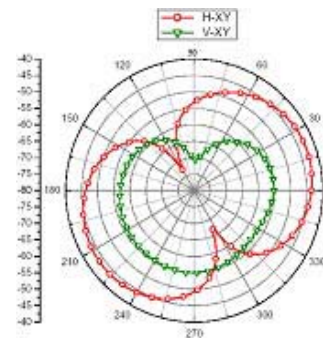
Coordinates system for Measurement



XZ plane radiation Pattern



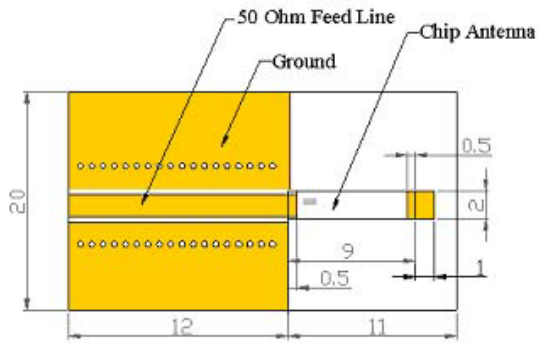
XY plane radiation Pattern



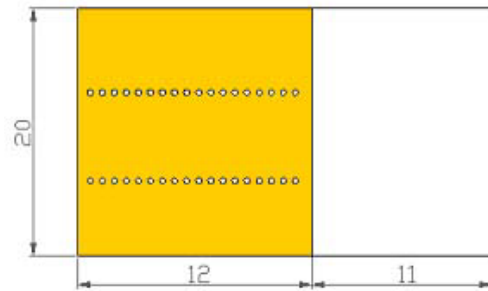
YZ plane radiation Pattern

Reference board and land pattern

(Unit: mm)



Evaluation board



GND pattern (Backside of the substrate)

Remark: the dimensions of the soldering pad will affect the resonant frequency of the antenna.