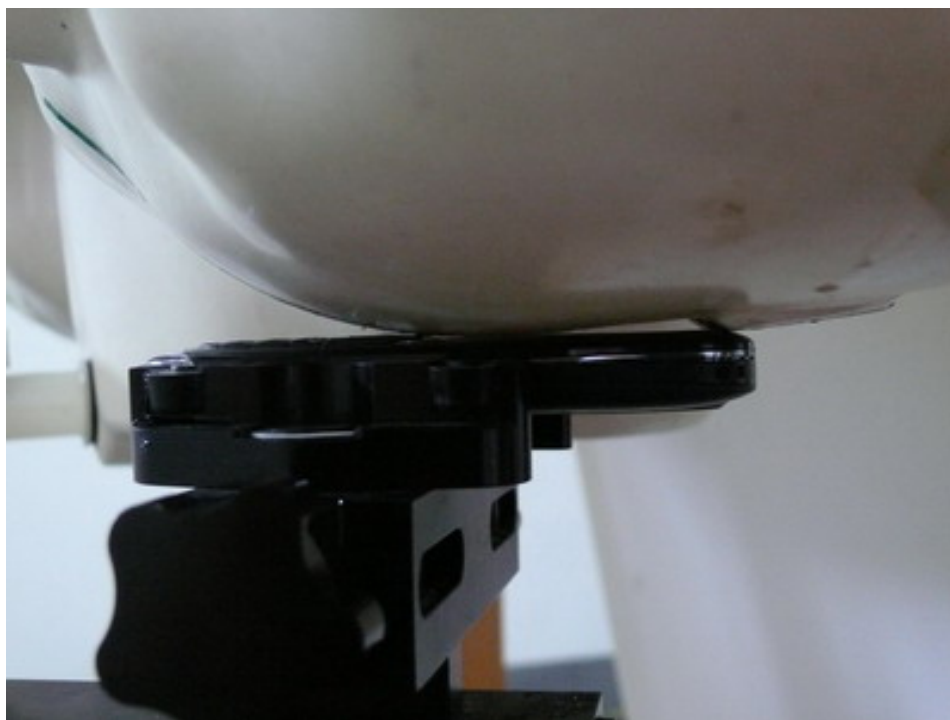


1 SAR SETUP PHOTOS:

ANNEX G: The EUT Appearances and Test Configuration



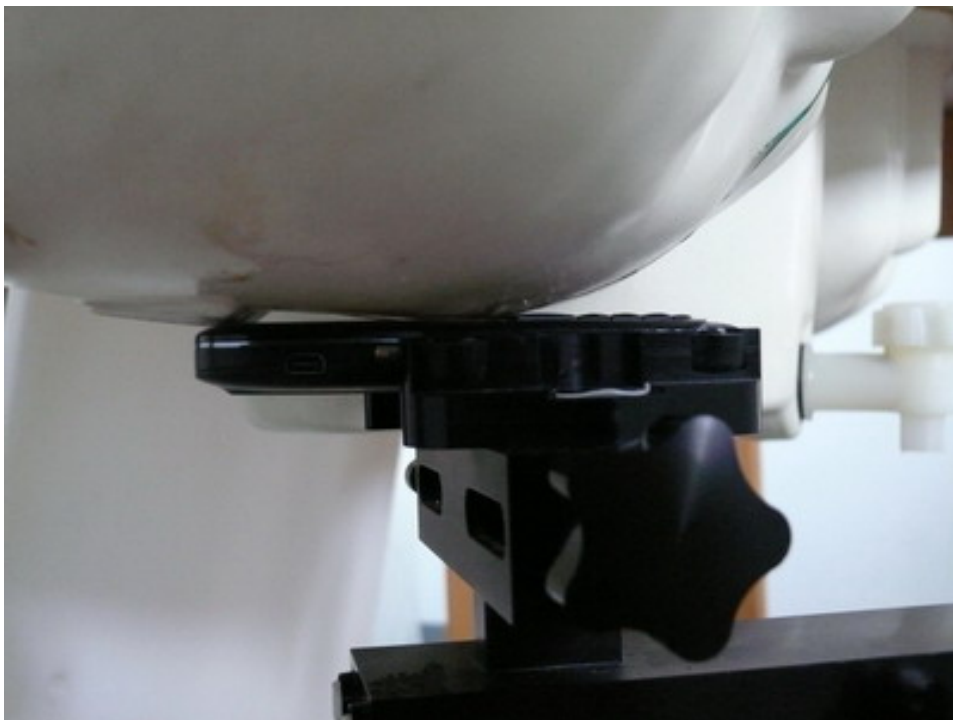
Picture 4: Constituents of EUT



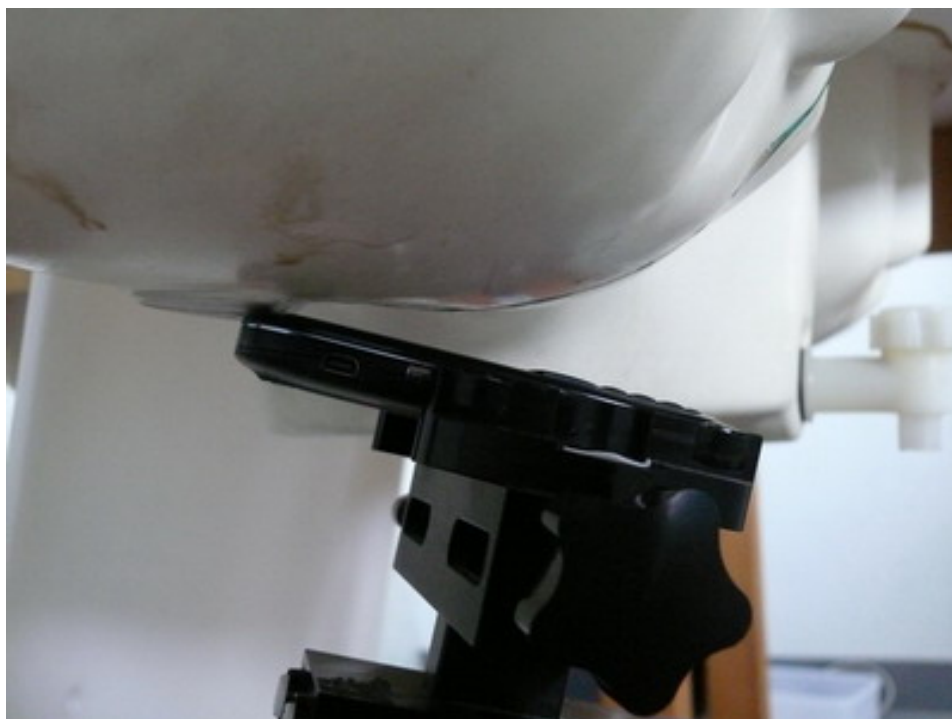
Picture 5: Left Hand Touch Cheek Position



Picture 6: Left Hand Tilt 15 Degree Position



Picture 7: Right Hand Touch Cheek Position



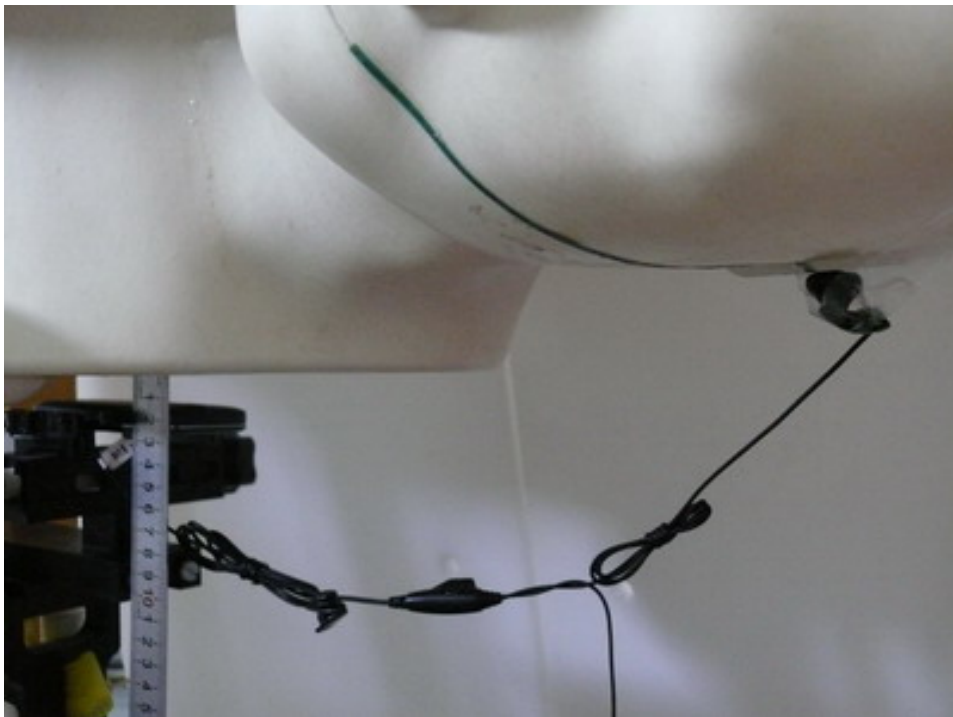
Picture 8: Right Hand Tilt 15 Degree Position



Picture 9: Body, The EUT display towards ground, the distance from handset to the bottom of the Phantom is 15mm



Picture 10: Body, The EUT display towards phantom, the distance from handset to the bottom of the Phantom is 15mm



Picture 11: Body with earphone, The EUT display towards ground, the distance from handset to the bottom of the Phantom is 15mm

2 EMC SETUP PHOTOS:



Photos of EUT



EUT Appearance



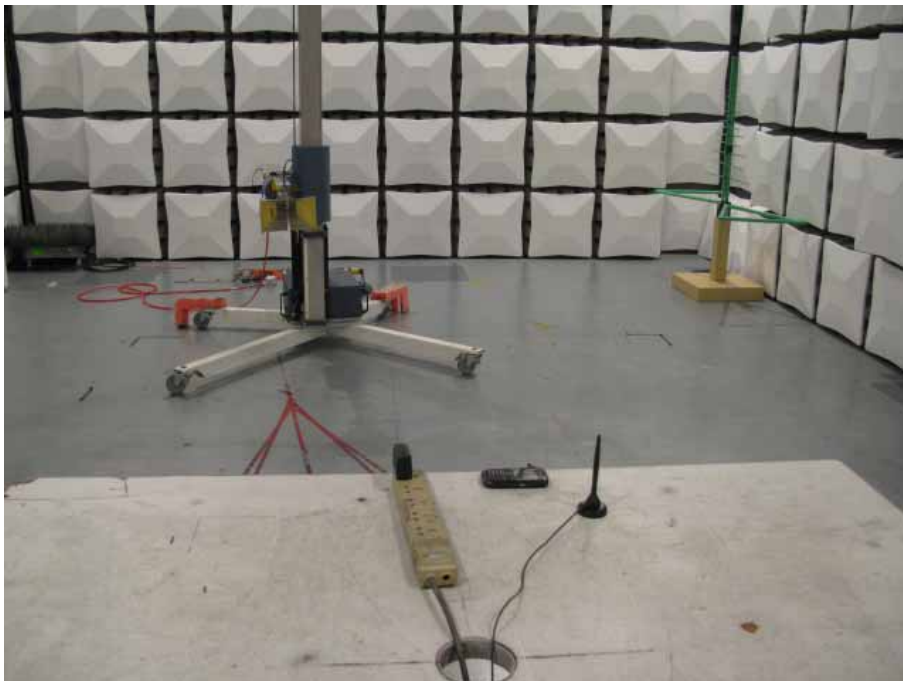
Photos of Test Setup



1 Radiated Emissions



Radiated Disturbance (30MHz-1GHz)



Radiated Disturbance (above 1GHz)

2 Radiated Spurious Emissions



Radiated Spurious Emission (below 2GHz)



Radiated Spurious Emission (2GHz to18GHz)



Radiated Spurious Emission 18G~26.5GHz



3 Conducted Emissions



Conducted Emissions for AC Ports

3 Bluetooth SETUP PHOTOS:Appendix J

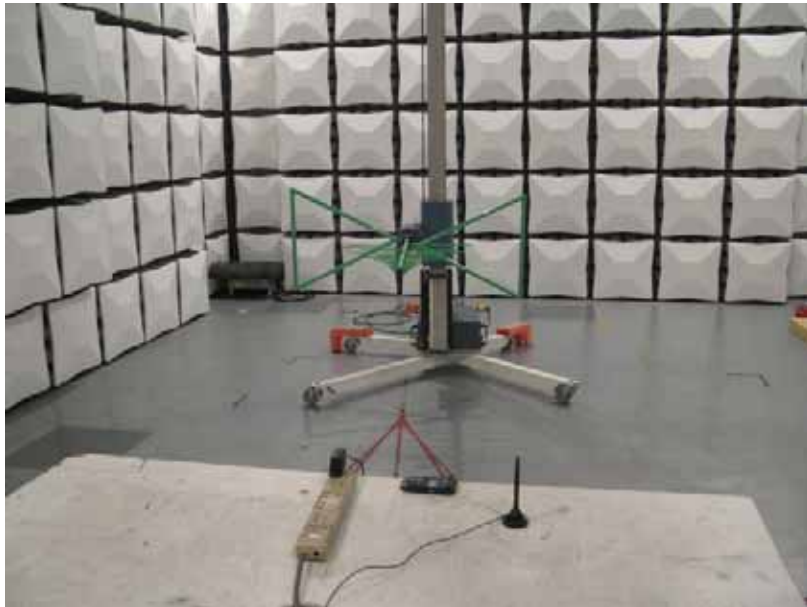


Appendix J

Photos of Test Setup



1 Radiated Spurious Emissions



Radiated Spurious Emission (below 2GHz)



Radiated Spurious Emission (2GHz to18GHz)



Radiated Spurious Emission (above 18GHz)

2 Conducted Emissions



Conducted Emissions for AC Ports

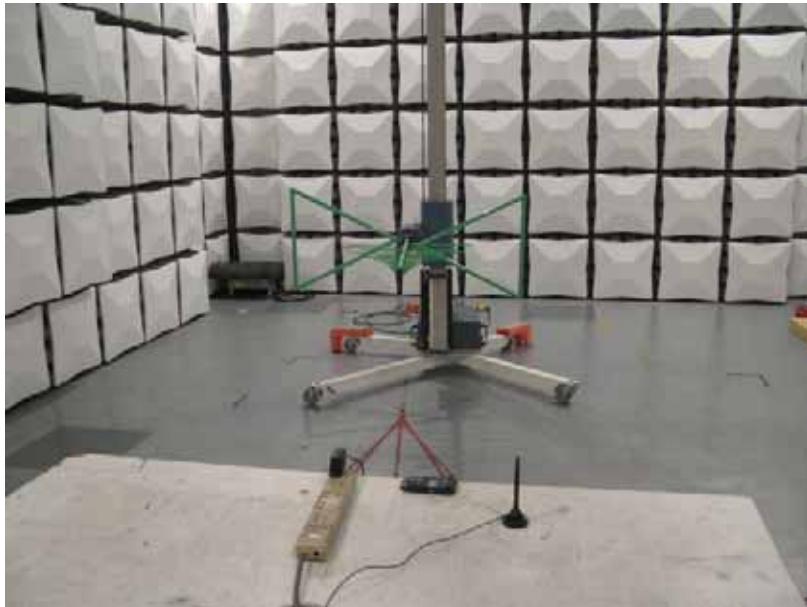


Appendix J

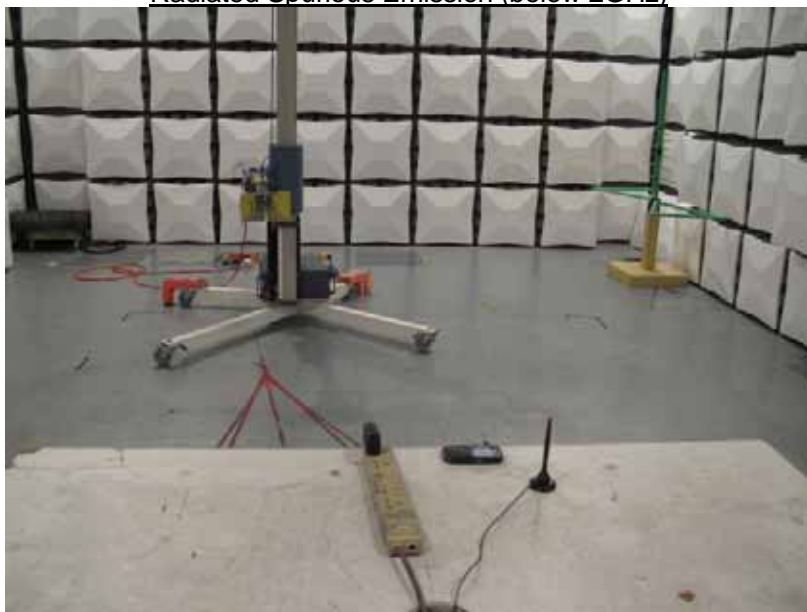
Photos of Test Setup



1 Radiated Spurious Emissions



Radiated Spurious Emission (below 2GHz)



Radiated Spurious Emission (2GHz to18GHz)



Radiated Spurious Emission (above 18GHz)

2 Conducted Emissions



Conducted Emissions for AC Ports