

Table 2: Manufacturer

Name or Company	HUAWEI Technologies Co., Ltd.
Address/Post	Bantian, Longgang District, Shenzhen, Guangdong
City	Shenzhen
Postal Code	518129
Country	China
Telephone	0755-28780808
Fax	0755-28780808

3.2 Constituents of EUT

Table 3: Constituents of Samples

Description	Model	Serial Number	Manufacturer
Handset	T7200	357960010002172	HUAWEI Technologies Co., Ltd
Lithium Battery	HBU86	FMT751103810V	Shenzhen FMT Co., Ltd.
AC/DC Adapter	TPI	UEP750400356	TECH-POWER Electronics (Shenzhen) Co., Ltd.



Picture 1.1: EUT with Slide down



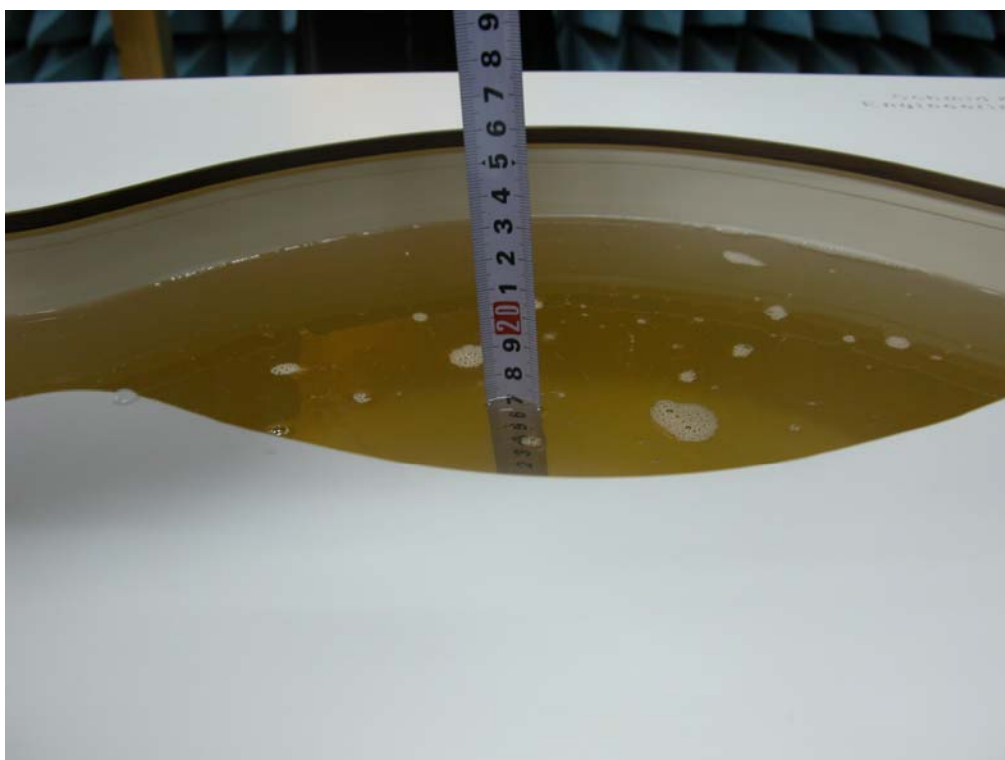
Picture 1.2: EUT with Slide up

Picture 1: Constituents of the sample (Lithium Battery is in the Handset)

## ANNEX B TEST LAYOUT



Picture B1: Specific Absorption Rate Test Layout



Picture B2: Liquid depth in the Flat Phantom (GSM 850 MHz)



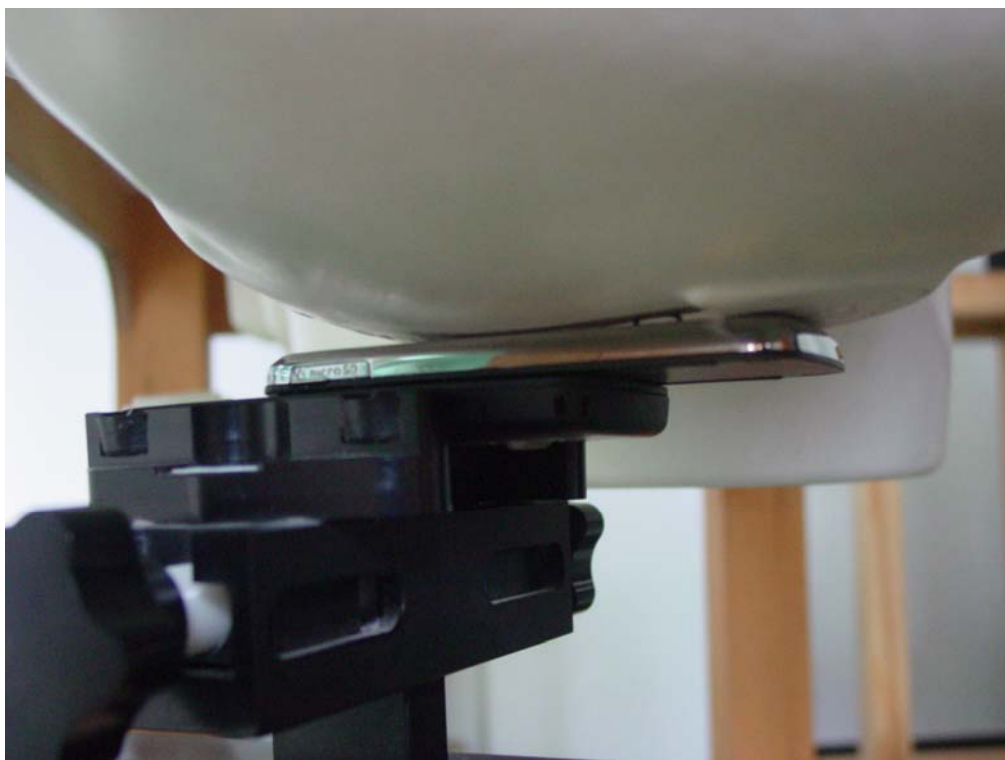
**Picture B3 Liquid depth in the Flat Phantom (PCS 1900MHz)**



**Picture B4: Left Hand Touch Cheek Position-slide down**



**Picture B5: Left Hand Tilt 15° Position-slide down**

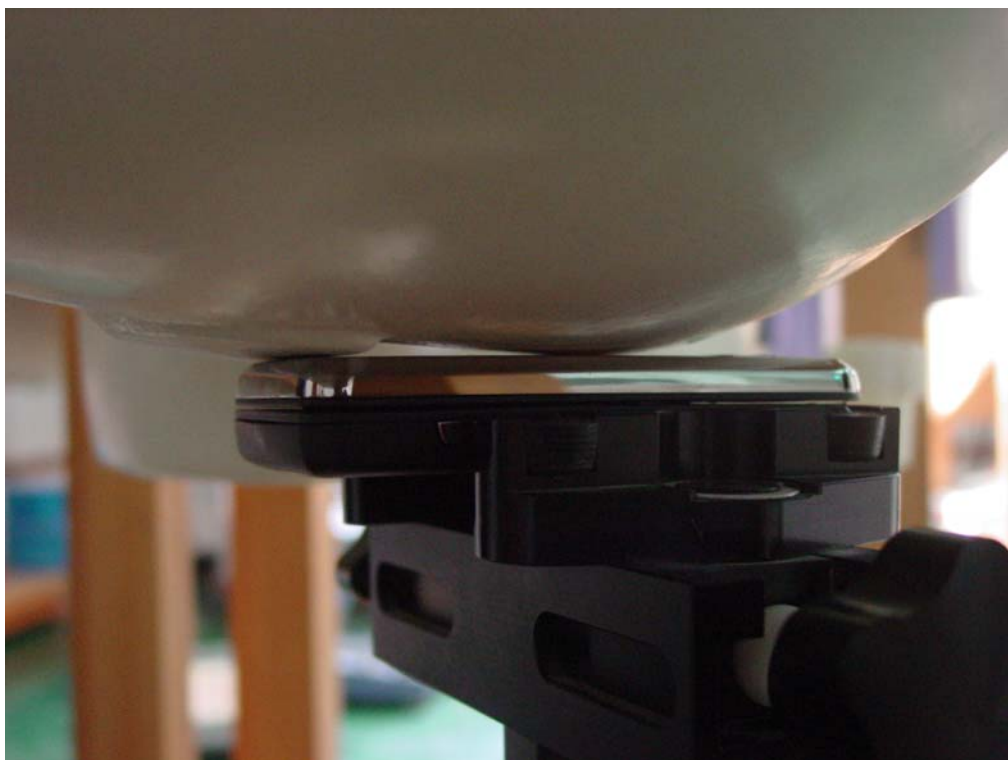


**Picture B6: Left Hand Touch Cheek Position-slide up**



**Picture B7: Left Hand Tilt 15° Position-slide up**





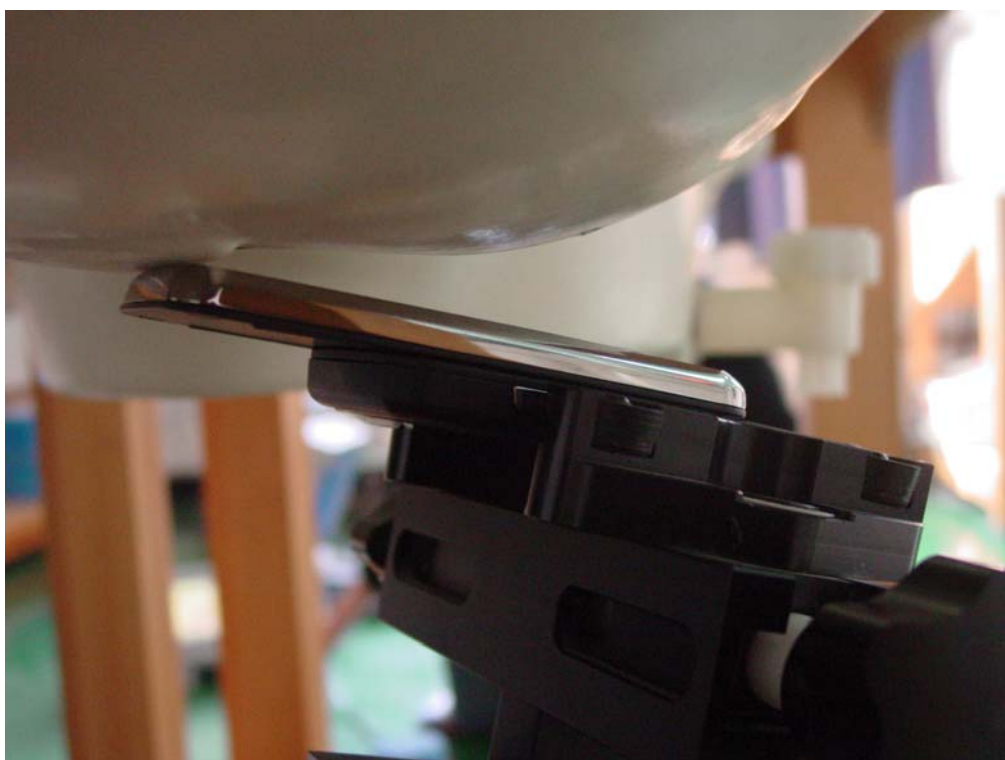
**Picture B8: Right Hand Touch Cheek Position-slide down**



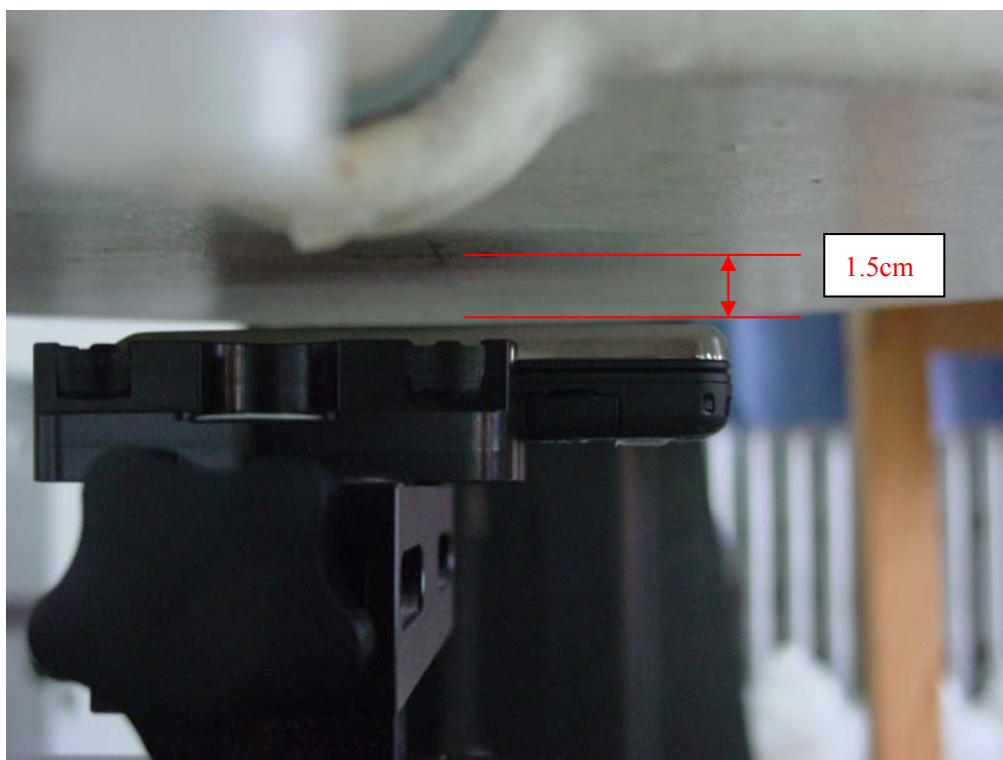
**Picture B9: Right Hand Tilt 15° Position-slide down**



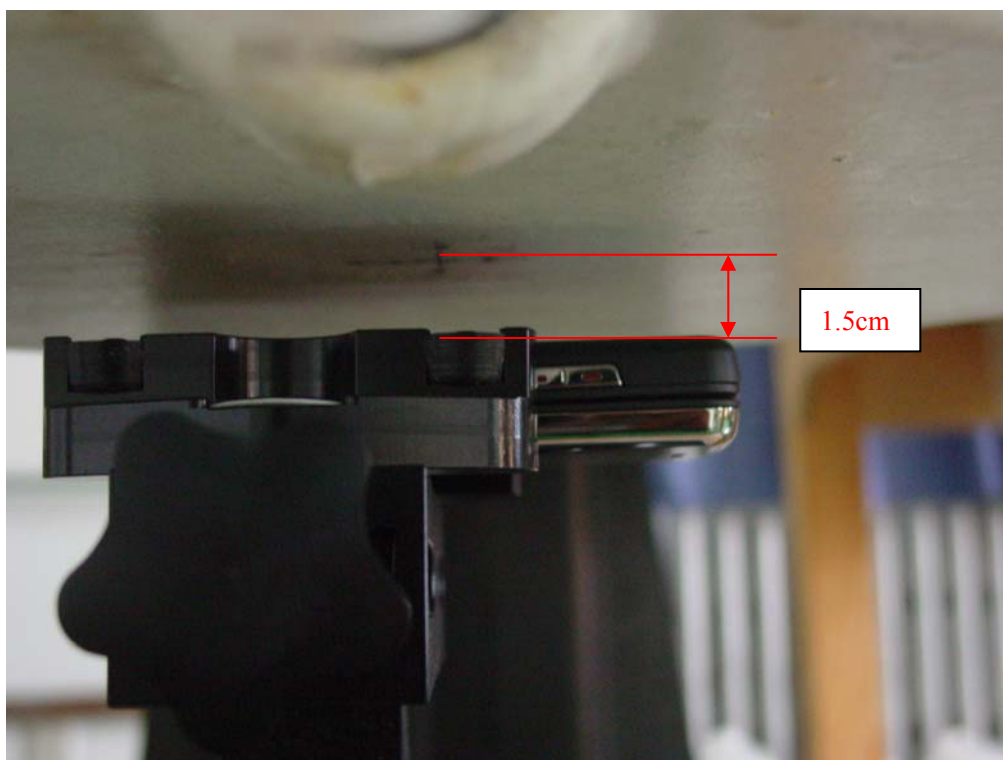
**Picture B10: Right Hand Touch Cheek Position-slide up**



**Picture B11: Right Hand Tilt 15° Position-slide up**

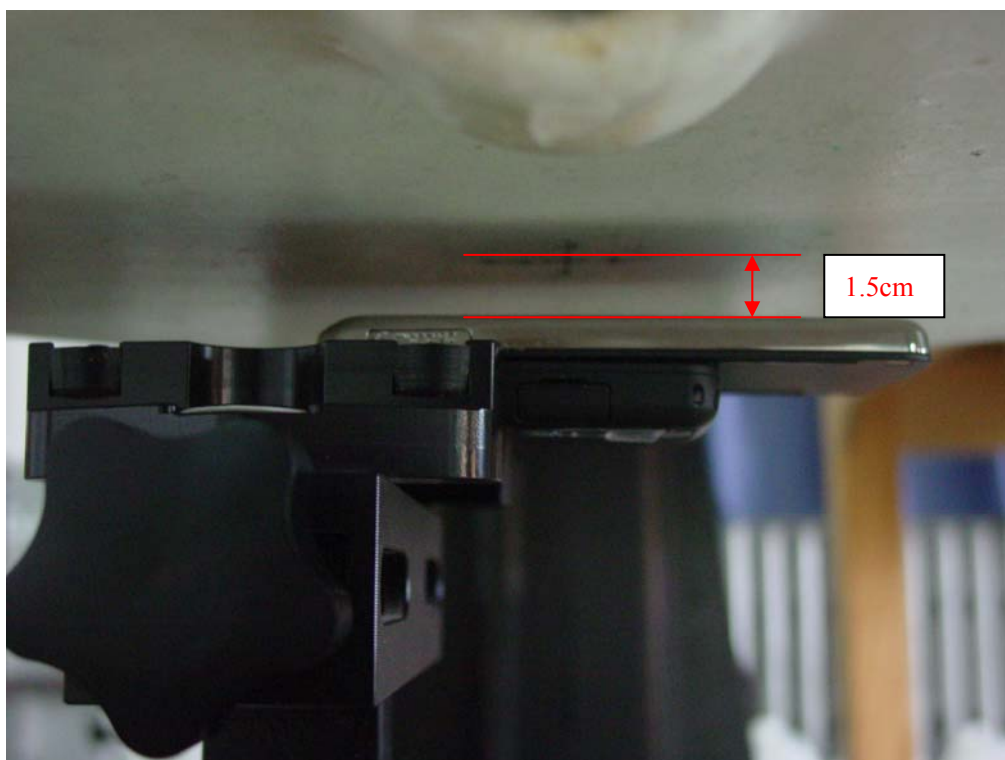


**Picture B12: Body-worn Position (towards phantom, the distance from handset to the bottom of the Phantom is 1.5cm)-slide down**

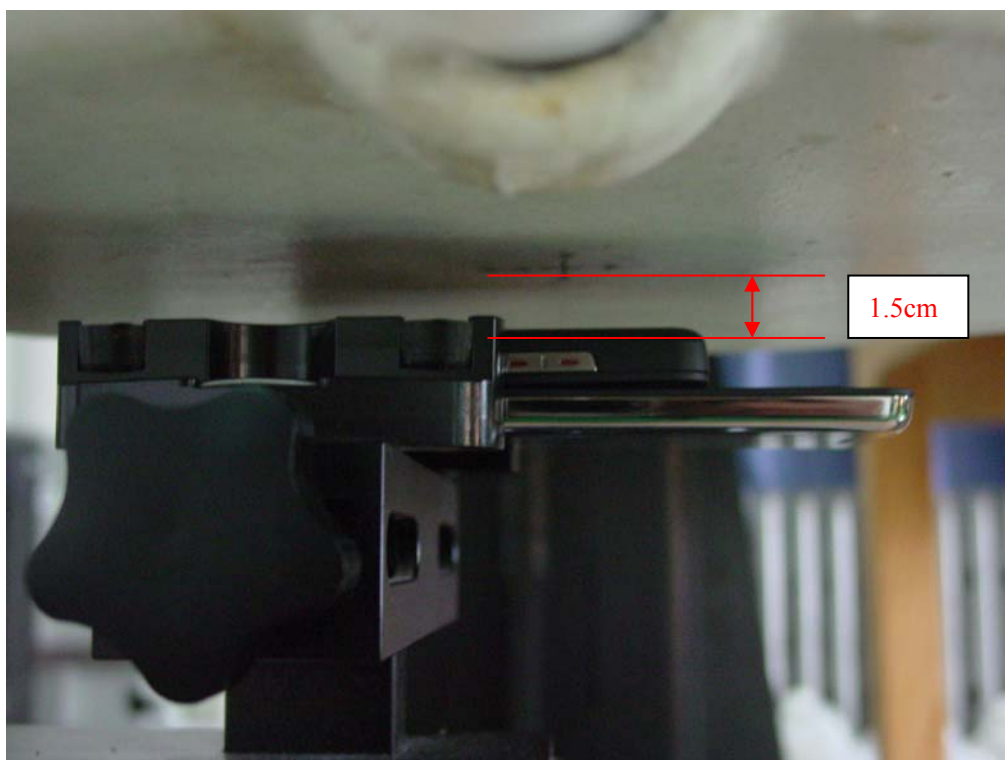


**Picture B13: Body-worn Position (towards ground, the distance from handset to the bottom of the Phantom is 1.5cm)-slide down**

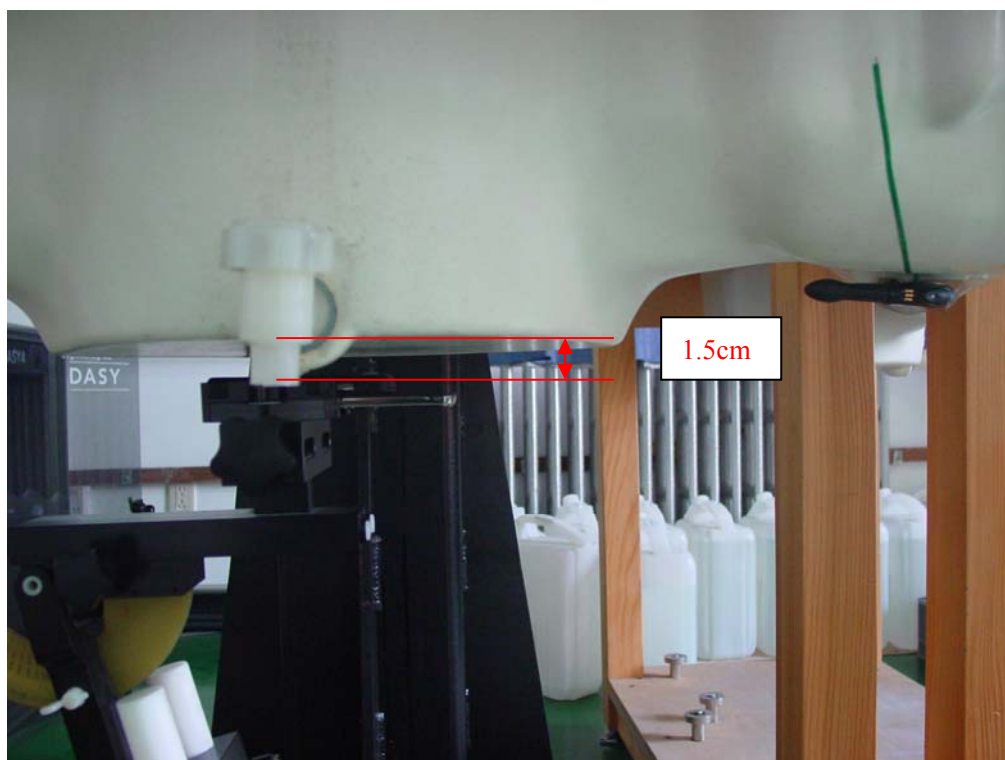




**Picture B14: Body-worn Position (towards phantom, the distance from handset to the bottom of the Phantom is 1.5cm)-slide up**



**Picture B15: Body-worn Position (towards ground, the distance from handset to the bottom of the Phantom is 1.5cm)-slide up**



**Picture B16: Body-worn Position with Bluetooth transmitter on, towards ground (the distance from handset to the bottom of the Phantom is 1.5cm)-slide up**