

Fig.14-1 Z-Scan at power reference point (Band 4 CH20050)

LTE Band 5 Left Cheek Low with QPSK_10MHz_1RB_Low

Date/Time: 2015/7/21

Electronics: DAE4 Sn786

Medium: Head 850 MHz

Medium parameters used (interpolated): $f = 829$ MHz; $\sigma = 0.923$ S/m; $\epsilon_r = 41.402$; $\rho = 1000$ kg/m³

Ambient Temperature: 22.0°C Liquid Temperature: 21.5°C

Communication System: LTE_FDD Frequency: 829 MHz Duty Cycle: 1:1

Probe: ES3DV3 - SN3151 ConvF(6.04, 6.04, 6.04);

Left Cheek Low_1RB_Low/Area Scan (41x81x1): Interpolated grid: dx=1.500 mm, dy=1.500 mm

Maximum value of SAR (interpolated) = 0.203 W/kg

Left Cheek Low_1RB_Low/Zoom Scan (7x7x7)/Cube 0: Measurement grid: dx=5mm, dy=5mm, dz=5mm

Reference Value = 7.634 V/m; Power Drift = 0.18 dB

Peak SAR (extrapolated) = 0.265 W/kg

SAR(1 g) = 0.196 W/kg; SAR(10 g) = 0.143 W/kg

Maximum value of SAR (measured) = 0.205 W/kg

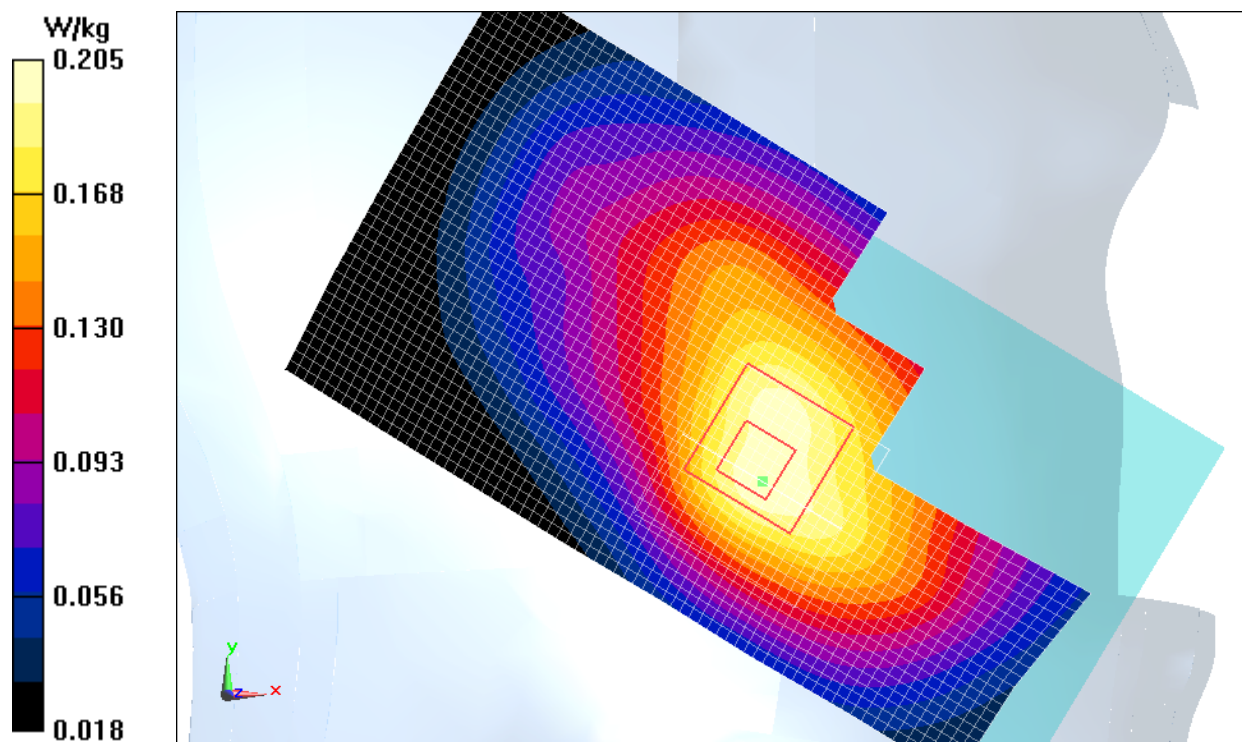


Fig.15 LTE Band 5 CH20450

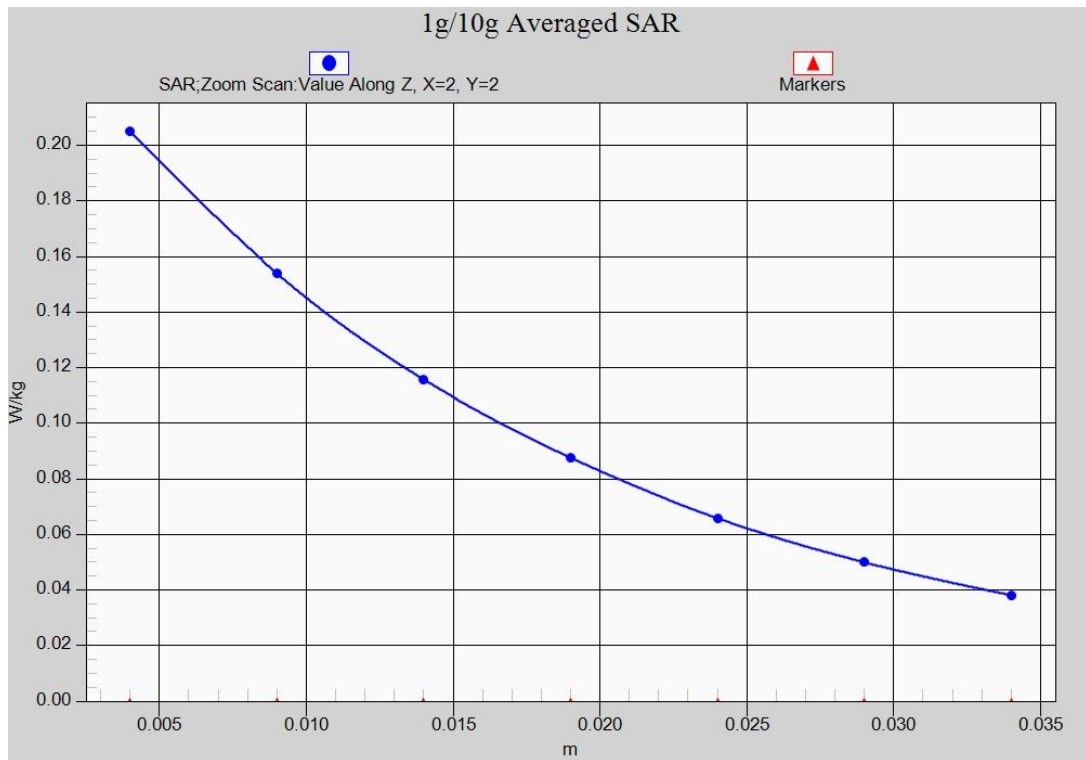


Fig.15-1 Z-Scan at power reference point (Band 5 CH20450)

LTE Band 5 Body Rear Low with QPSK_10MHz_1RB_Low

Date/Time: 2015/8/8

Electronics: DAE4 Sn786

Medium: Body850 MHz

Medium parameters used (interpolated): $f = 829$ MHz; $\sigma = 0.964$ S/m; $\epsilon_r = 53.537$; $\rho = 1000$ kg/m³

Ambient Temperature: 22.0°C Liquid Temperature: 21.5°C

Communication System: LTE_FDD Frequency: 829 MHz Duty Cycle: 1:1

Probe: ES3DV3 - SN3151 ConvF(6.14, 6.14, 6.14);

Rear side low_1RB_Low/Area Scan (41x81x1): Interpolated grid: dx=1.500 mm, dy=1.500 mm

Maximum value of SAR (interpolated) = 0.360 W/kg

Rear side low_1RB_Low/Zoom Scan (7x7x7)/Cube 0: Measurement grid: dx=5mm, dy=5mm, dz=5mm

Reference Value = 19.456 V/m; Power Drift = -0.02 dB

Peak SAR (extrapolated) = 0.406 W/kg

SAR(1 g) = 0.336 W/kg; SAR(10 g) = 0.260 W/kg

Maximum value of SAR (measured) = 0.352 W/kg

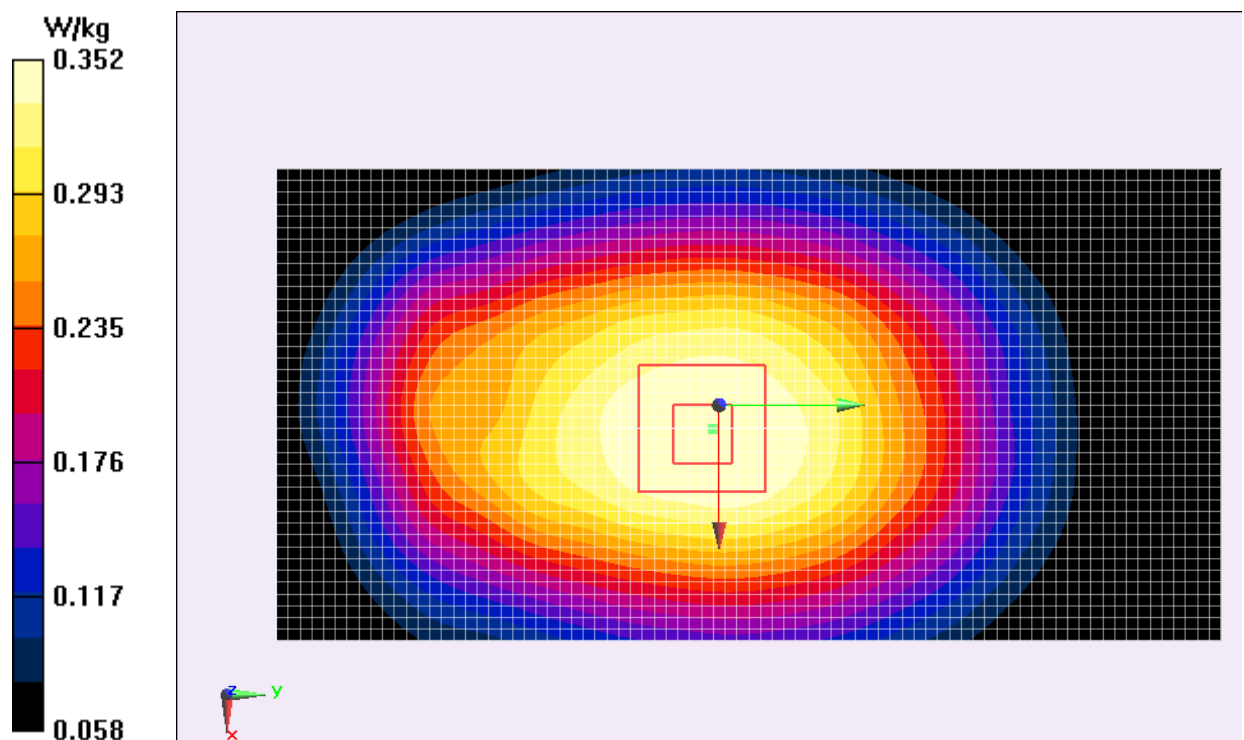


Fig.16 LTE Band 5 CH20450

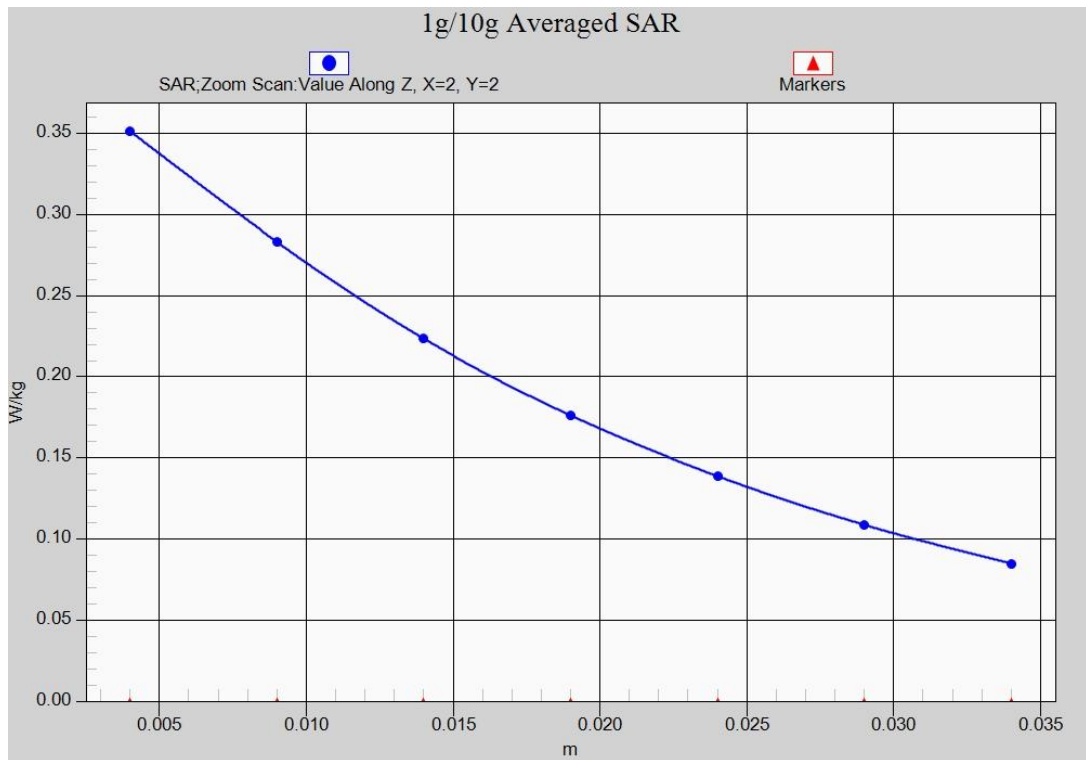


Fig.16-1 Z-Scan at power reference point (Band 5 CH20450)

LTE Band 7 Right Cheek High with QPSK_20MHz_1RB_High

Date/Time: 2015/8/1

Electronics: DAE4 Sn786

Medium: Head 2600

Medium parameters used: $f = 2560$ MHz; $\sigma = 2.000$ S/m; $\epsilon_r = 38.93$; $\rho = 1000$ kg/m³

Ambient Temperature: 22.0°C Liquid Temperature: 21.5°C

Communication System: LTE_FDD Frequency: 2560 MHz Duty Cycle: 1:1

Probe: ES3DV3 - SN3151 ConvF(4.57, 4.57, 4.57);

Right Cheek High_1RB_High/Area Scan (51x81x1): Interpolated grid: dx=1.500 mm, dy=1.500 mm

Maximum value of SAR (interpolated) = 0.197 W/kg

Right Cheek High_1RB_High/Zoom Scan (7x7x7)/Cube 0: Measurement grid: dx=5mm, dy=5mm, dz=5mm

Reference Value = 3.540 V/m; Power Drift = 0.15 dB

Peak SAR (extrapolated) = 0.334 W/kg

SAR(1 g) = 0.175 W/kg; SAR(10 g) = 0.089 W/kg

Maximum value of SAR (measured) = 0.190 W/kg

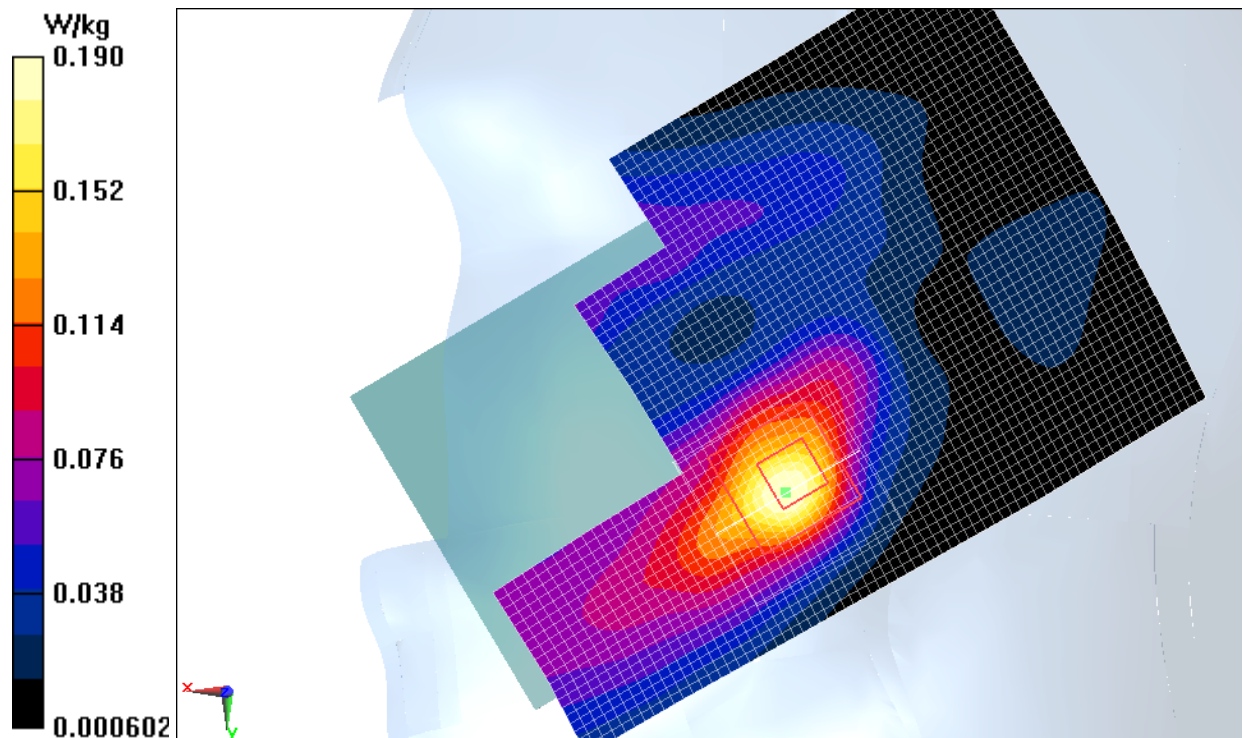


Fig.17 LTE Band 7 CH21350

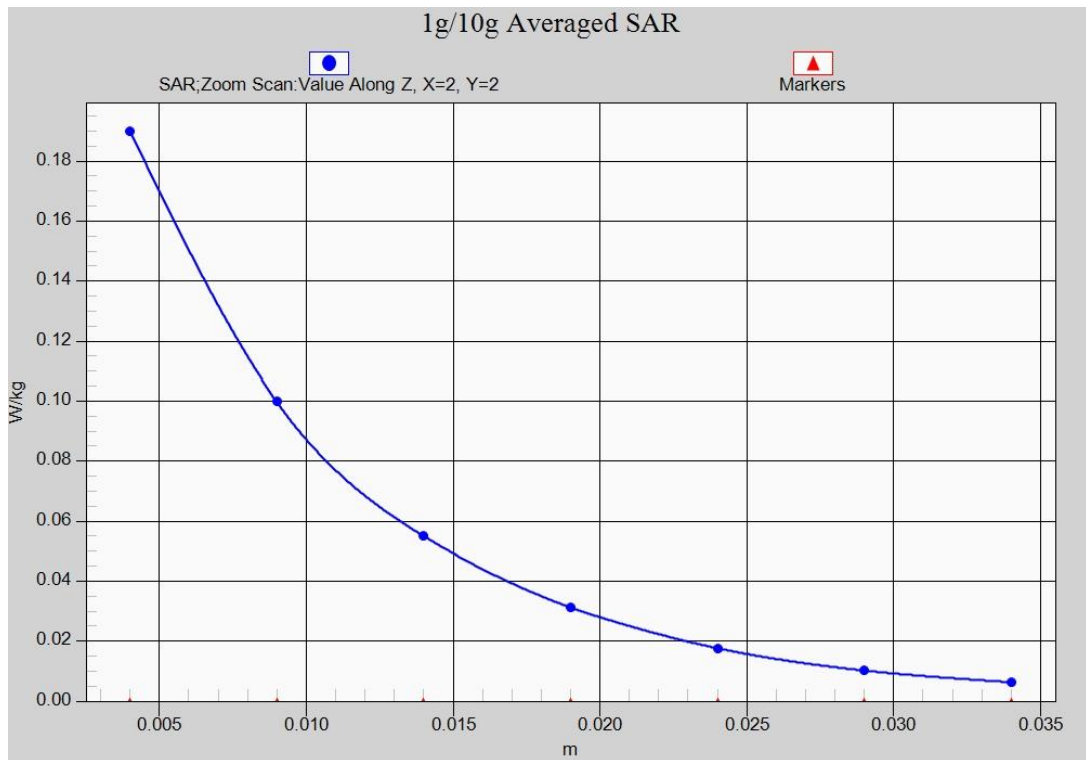


Fig.17-1 Z-Scan at power reference point (Band 7 CH21350)

LTE Band 7 Body Rear High with QPSK_20MHz_1RB_ High-AP OFF

Date/Time: 2015/8/9

Electronics: DAE4 Sn786

Medium: Body 2600

Medium parameters used: $f = 2560$ MHz; $\sigma = 2.050$ S/m; $\epsilon_r = 51.087$; $\rho = 1000$ kg/m³

Ambient Temperature: 22.0°C Liquid Temperature: 21.5°C

Communication System: LTE_FDD Frequency: 2510 MHz Duty Cycle: 1:1

Probe: ES3DV3 - SN3151 ConvF(4.42, 4.42, 4.42);

Rear side High_1RB_High /Area Scan (41x81x1): Interpolated grid: dx=1.500 mm, dy=1.500 mm

Maximum value of SAR (interpolated) = 0.808 W/kg

Rear side High_1RB_High/Zoom Scan (7x7x7)/Cube 0: Measurement grid: dx=5mm, dy=5mm, dz=5mm

Reference Value = 5.593 V/m; Power Drift = 0.16 dB

Peak SAR (extrapolated) = 1.66 W/kg

SAR(1 g) = 0.645 W/kg; SAR(10 g) = 0.336 W/kg

Maximum value of SAR (measured) = 0.810 W/kg

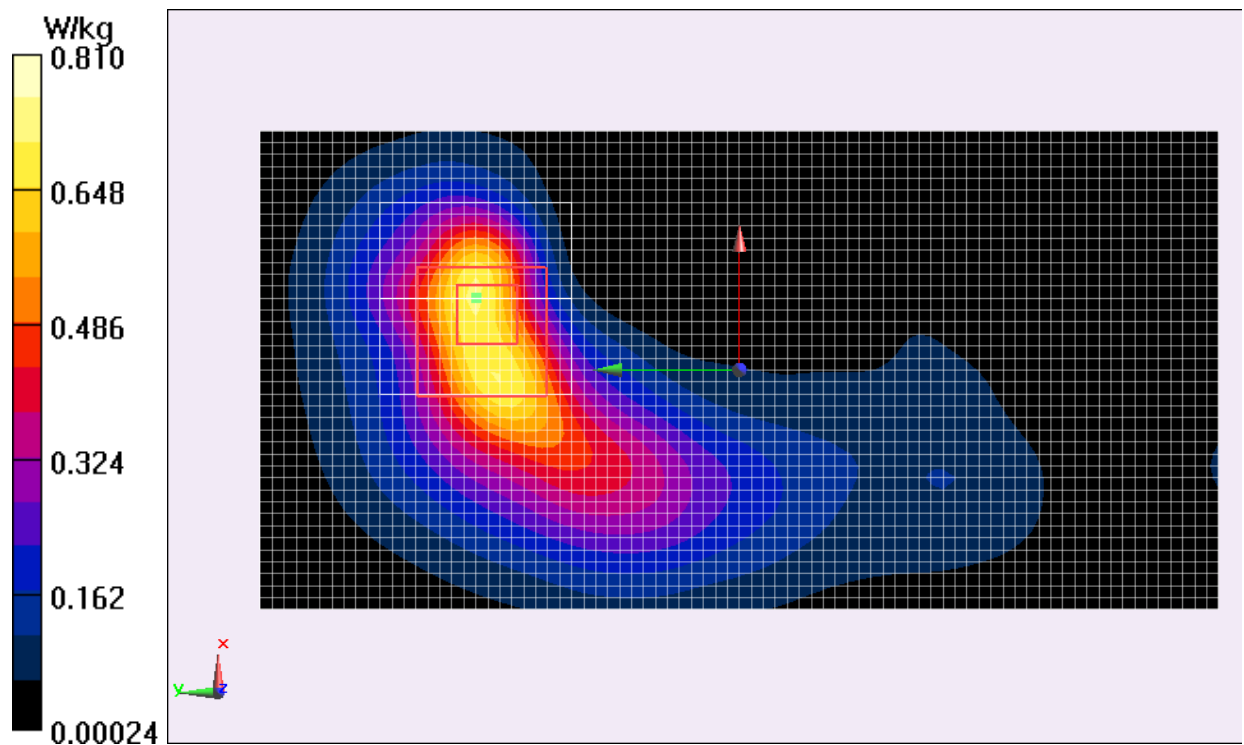


Fig.18 LTE Band 7 CH21350

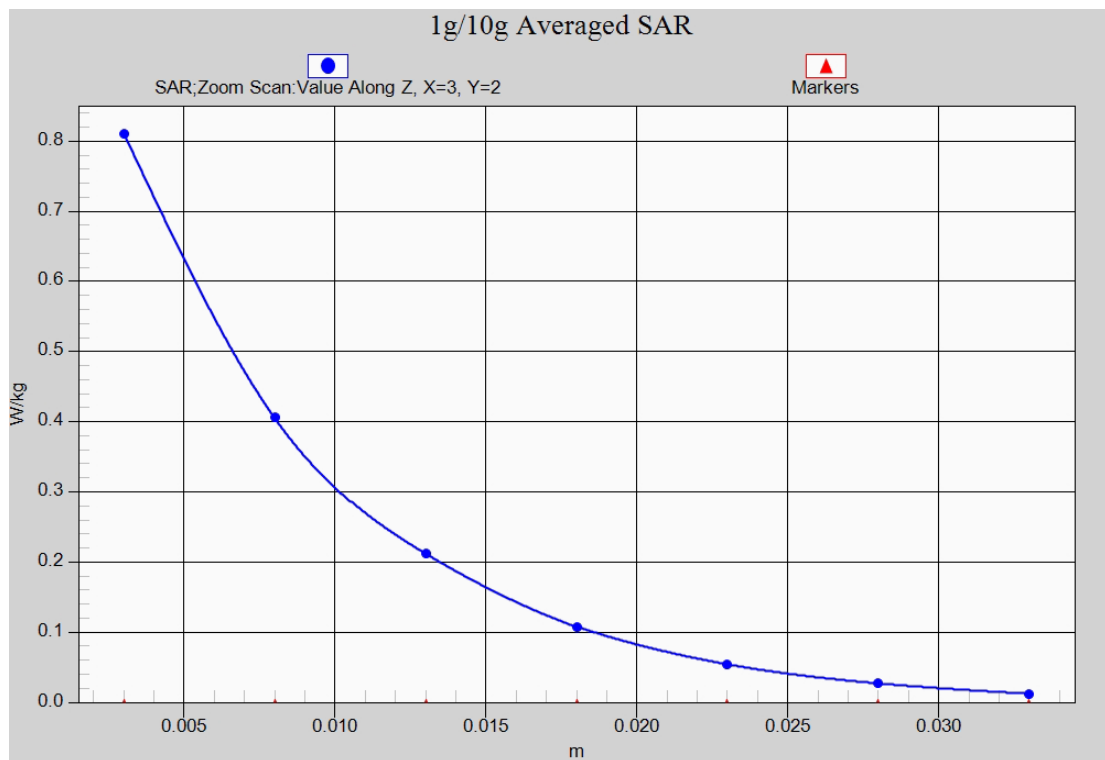


Fig.18-1 Z-Scan at power reference point (Band 7 CH21350)

LTE Band 7 Body Bottom High with QPSK_20MHz_1RB_High-AP ON

Date/Time: 2015-8-9

Electronics: DAE4 Sn786

Medium: Body 2600

Medium parameters used: $f = 2560$ MHz; $\sigma = 2.05$ S/m; $\epsilon_r = 51.087$; $\rho = 1000$ kg/m³

Ambient Temperature: 22.0°C Liquid Temperature: 21.5°C

Communication System: LTE_FDD Frequency: 2510 MHz Duty Cycle: 1:1

Probe: ES3DV3 - SN3151 ConvF(4.42, 4.42, 4.42); Calibrated: 2014-9-1

LTE_Band_7 body/Bottom side High_1RB_High/Area Scan (31x51x1): Interpolated grid:

dx=1.500 mm, dy=1.500 mm

Maximum value of SAR (interpolated) = 0.406 W/kg

LTE_Band_7 body/ Bottom side High_1RB_High/Zoom Scan (7x7x7)/Cube 0: Measurement

grid: dx=5mm, dy=5mm, dz=5mm

Reference Value = 13.591 V/m; Power Drift = -0.03 dB

Peak SAR (extrapolated) = 0.725 W/kg

SAR(1 g) = 0.370 W/kg; SAR(10 g) = 0.187 W/kg

Maximum value of SAR (measured) = 0.425 W/kg

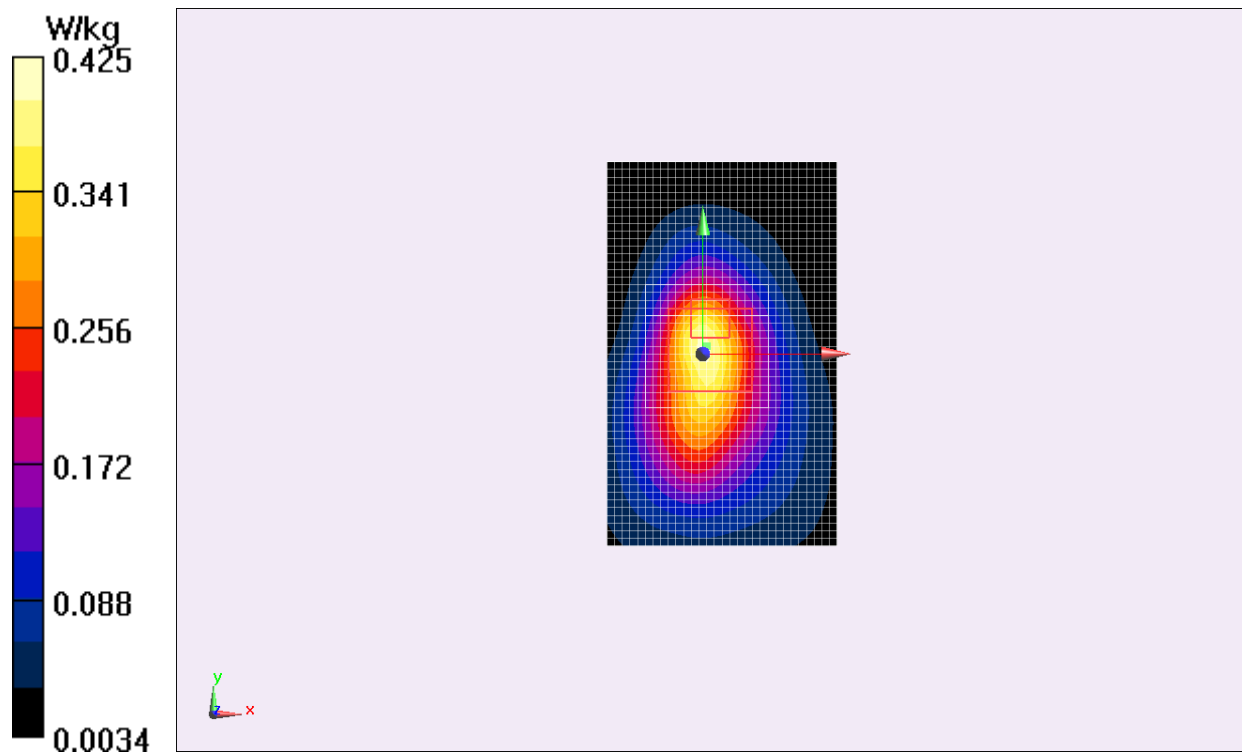


Fig.19 LTE Band 7 CH21350

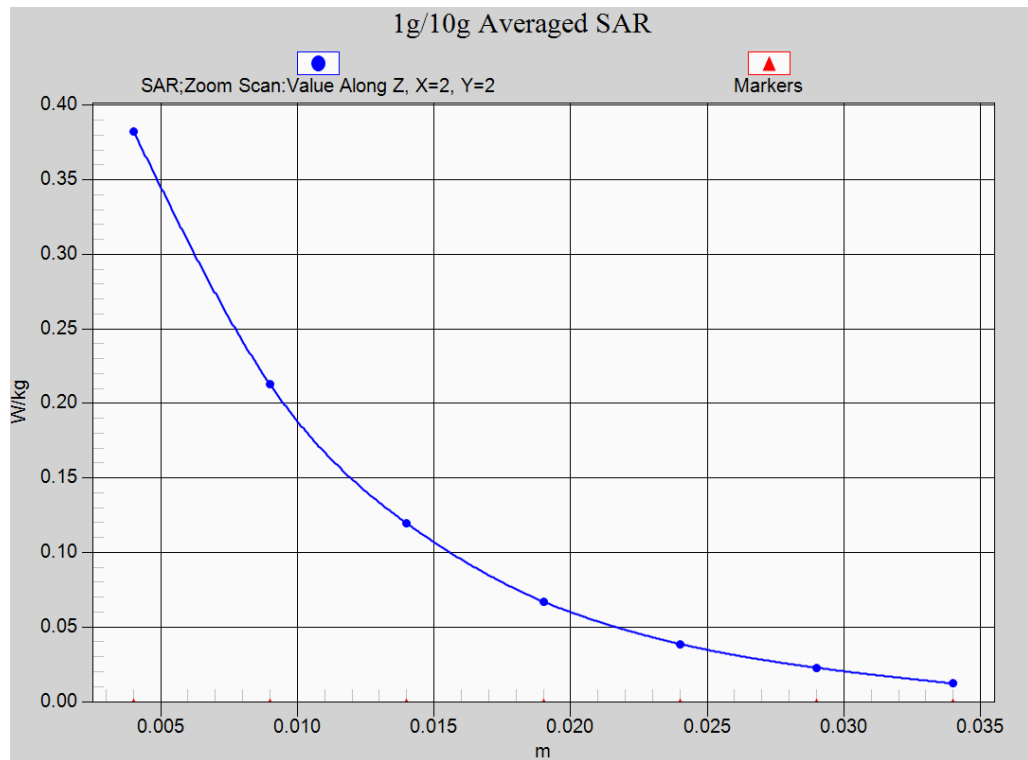


Fig.19-1 Z-Scan at power reference point (Band 7 CH21350)

LTE Band 12 Right Cheek High with QPSK_10MHz_1RB_High

Date/Time: 2015/7/25

Electronics: DAE4 Sn786

Medium: Head 750 MHz

Medium parameters used (interpolated): $f = 711$ MHz; $\sigma = 0.777$ S/m; $\epsilon_r = 42.648$; $\rho = 1000$ kg/m³

Ambient Temperature: 23.3°C Liquid Temperature: 22.5°C

Communication System: UID 0, LTE Band12 (10M) (0) Frequency: 711 MHz Duty Cycle: 1:1

Probe: EX3DV4 - SN3617 ConvF(10.02, 10.02, 10.02);

Area Scan (71x121x1): Interpolated grid: dx=1.500 mm, dy=1.500 mm

Maximum value of SAR (interpolated) = 0.194 W/kg

Zoom Scan (7x7x7)/Cube 0: Measurement grid: dx=5mm, dy=5mm, dz=5mm

Reference Value = 6.820 V/m; Power Drift = -0.06 dB

Peak SAR (extrapolated) = 0.213 W/kg

SAR(1 g) = 0.176 W/kg; SAR(10 g) = 0.138 W/kg

Maximum value of SAR (measured) = 0.185 W/kg

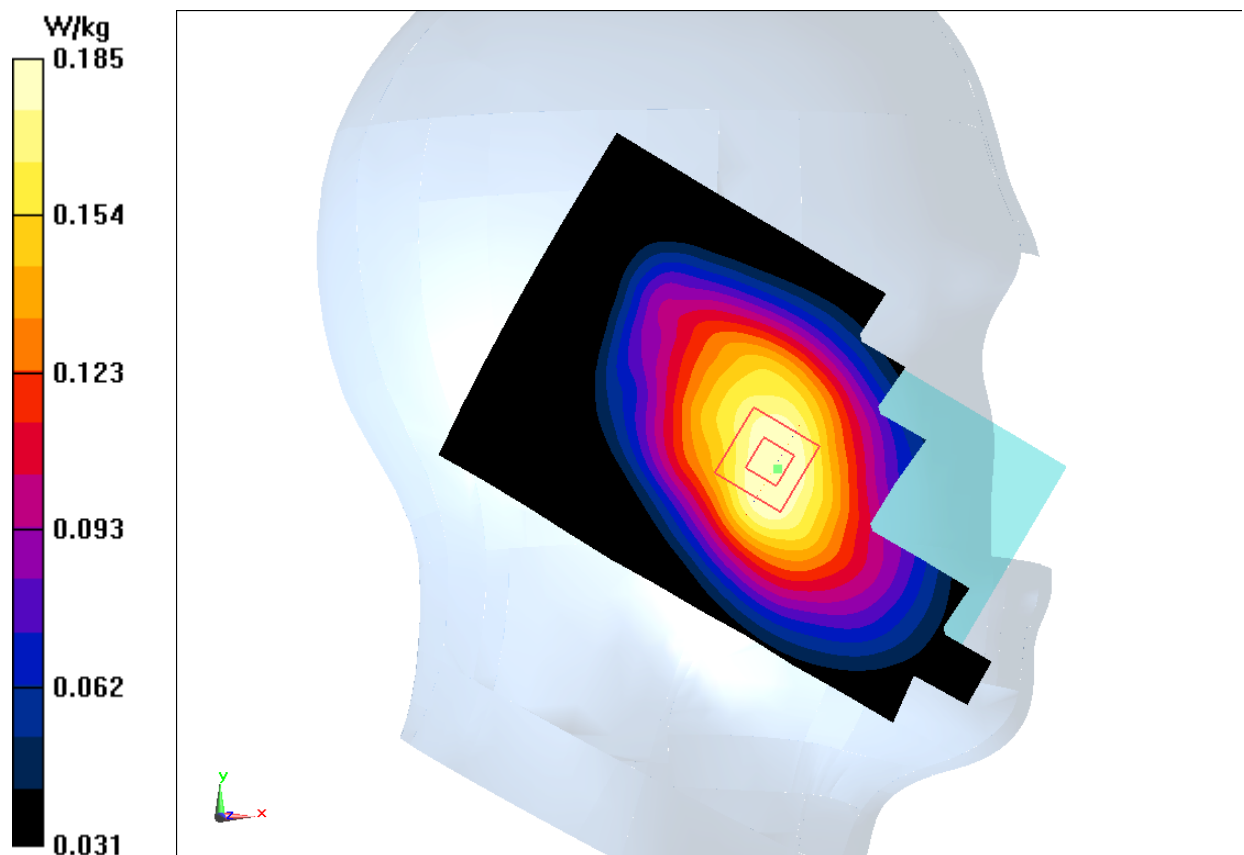


Fig.20 LTE Band 12 CH23130

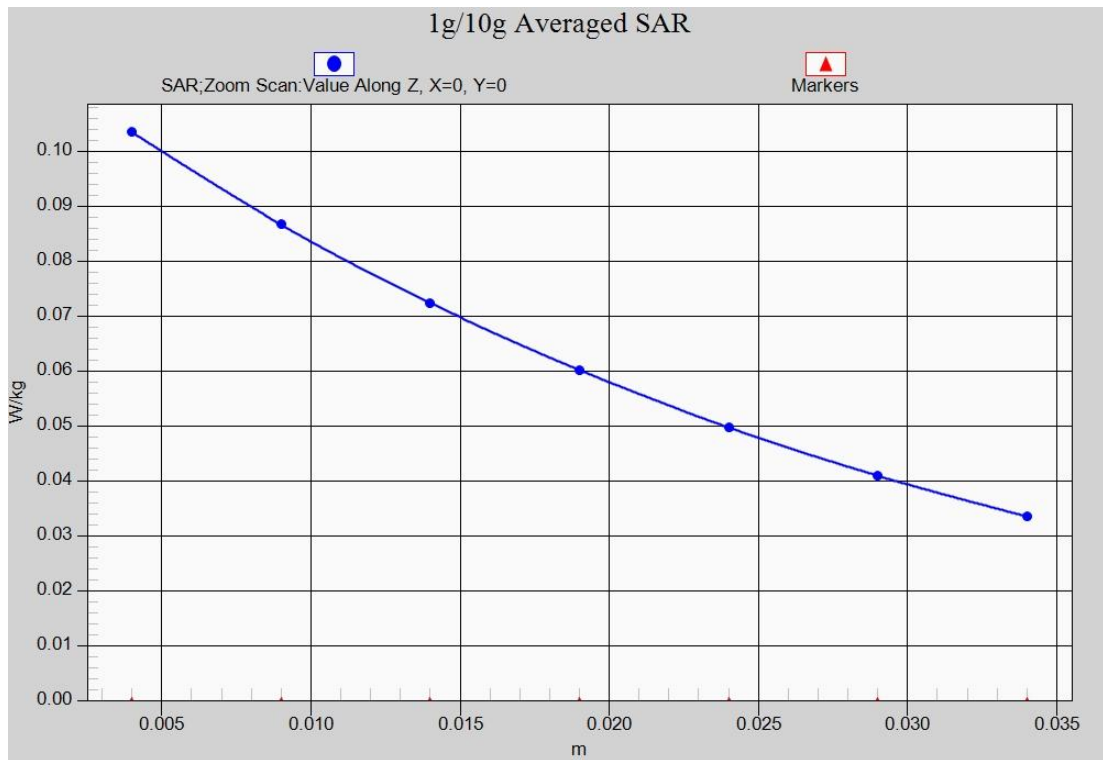


Fig.20-1 Z-Scan at power reference point (Band 12 CH23130)

LTE Band 12 Body Rear Low with QPSK_20MHz_1RB_Low

Date/Time: 2015/7/24

Electronics: DAE4 Sn786

Medium: Body 750 MHz

Medium parameters used (interpolated): $f = 711$ MHz; $\sigma = 0.88$ S/m; $\epsilon_r = 56.586$; $\rho = 1000$ kg/m³

Ambient Temperature: 23.0°C Liquid Temperature: 22.5°C

Communication System: UID 0, LTE Band12 (0) Frequency: 711 MHz Duty Cycle: 1:1

Probe: EX3DV4 - SN3617 ConvF(9.53, 9.53, 9.53);

Area Scan (121x71x1): Interpolated grid: dx=1.500 mm, dy=1.500 mm

Maximum value of SAR (interpolated) = 0.209 W/kg

Zoom Scan (7x7x7)/Cube 0: Measurement grid: dx=5mm, dy=5mm, dz=5mm

Reference Value = 14.33 V/m; Power Drift = 0.13 dB

Peak SAR (extrapolated) = 0.260 W/kg

SAR(1 g) = 0.177 W/kg; SAR(10 g) = 0.140 W/kg

Maximum value of SAR (measured) = 0.215 W/kg

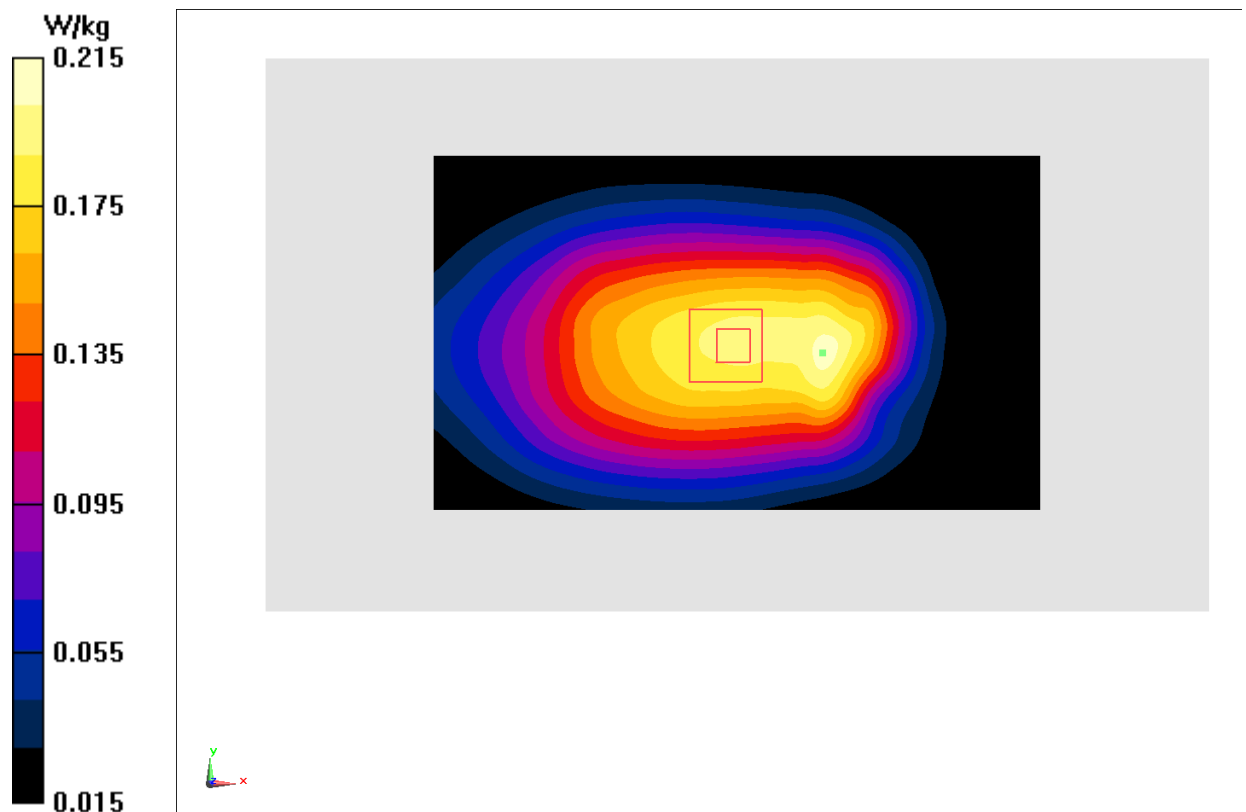


Fig.21 LTE Band 12 CH23130

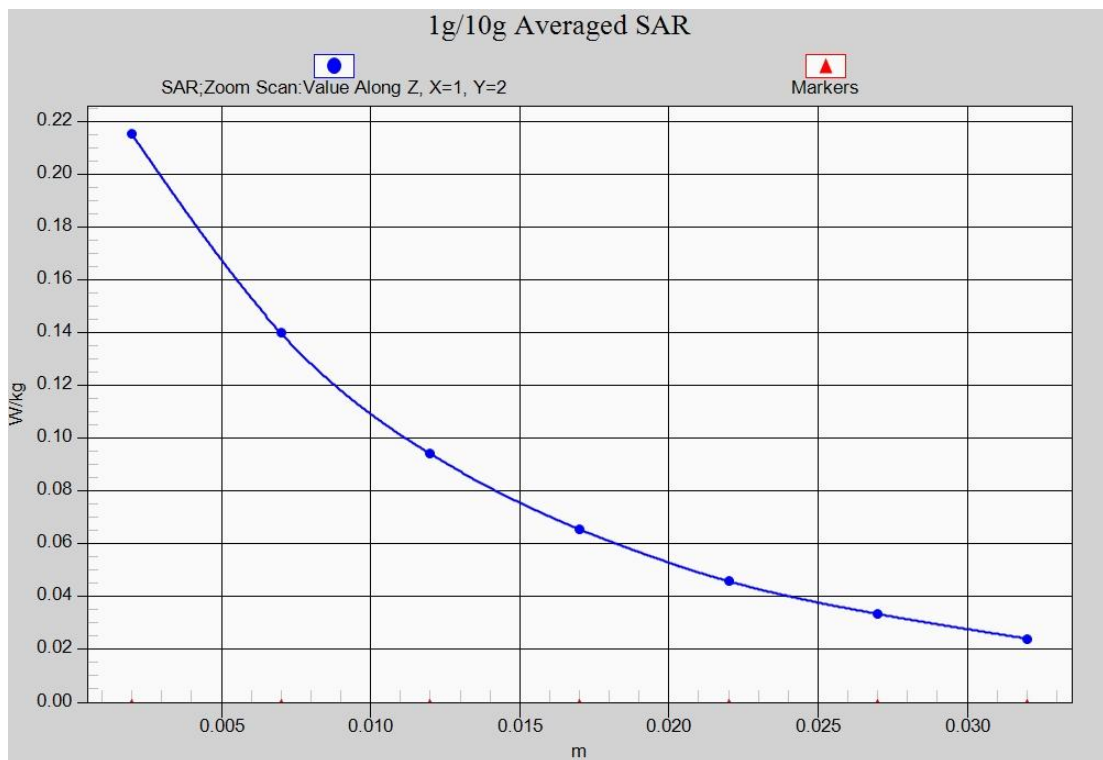


Fig.21-1 Z-Scan at power reference point (Band 12 CH23130)

LTE Band 17 Right Cheek High with QPSK_10MHz_1RB_High

Date/Time: 2015/7/25

Electronics: DAE4 Sn786

Medium: Head 750 MHz

Medium parameters used (interpolated): $f = 711$ MHz; $\sigma = 0.777$ S/m; $\epsilon_r = 42.648$; $\rho = 1000$ kg/m³

Ambient Temperature: 23.3°C Liquid Temperature: 22.5°C

Communication System: UID 0, LTE Band 17 (0) Frequency: 711 MHz Duty Cycle: 1:1

Probe: EX3DV4 - SN3617 ConvF(10.02, 10.02, 10.02);

Area Scan (71x121x1): Interpolated grid: $dx=1.500$ mm, $dy=1.500$ mm

Maximum value of SAR (interpolated) = 0.147 W/kg

Zoom Scan (7x7x7)/Cube 0: Measurement grid: $dx=5$ mm, $dy=5$ mm, $dz=5$ mm

Reference Value = 6.671 V/m; Power Drift = 0.12 dB

Peak SAR (extrapolated) = 0.161 W/kg

SAR(1 g) = 0.138 W/kg; SAR(10 g) = 0.107 W/kg

Maximum value of SAR (measured) = 0.142 W/kg

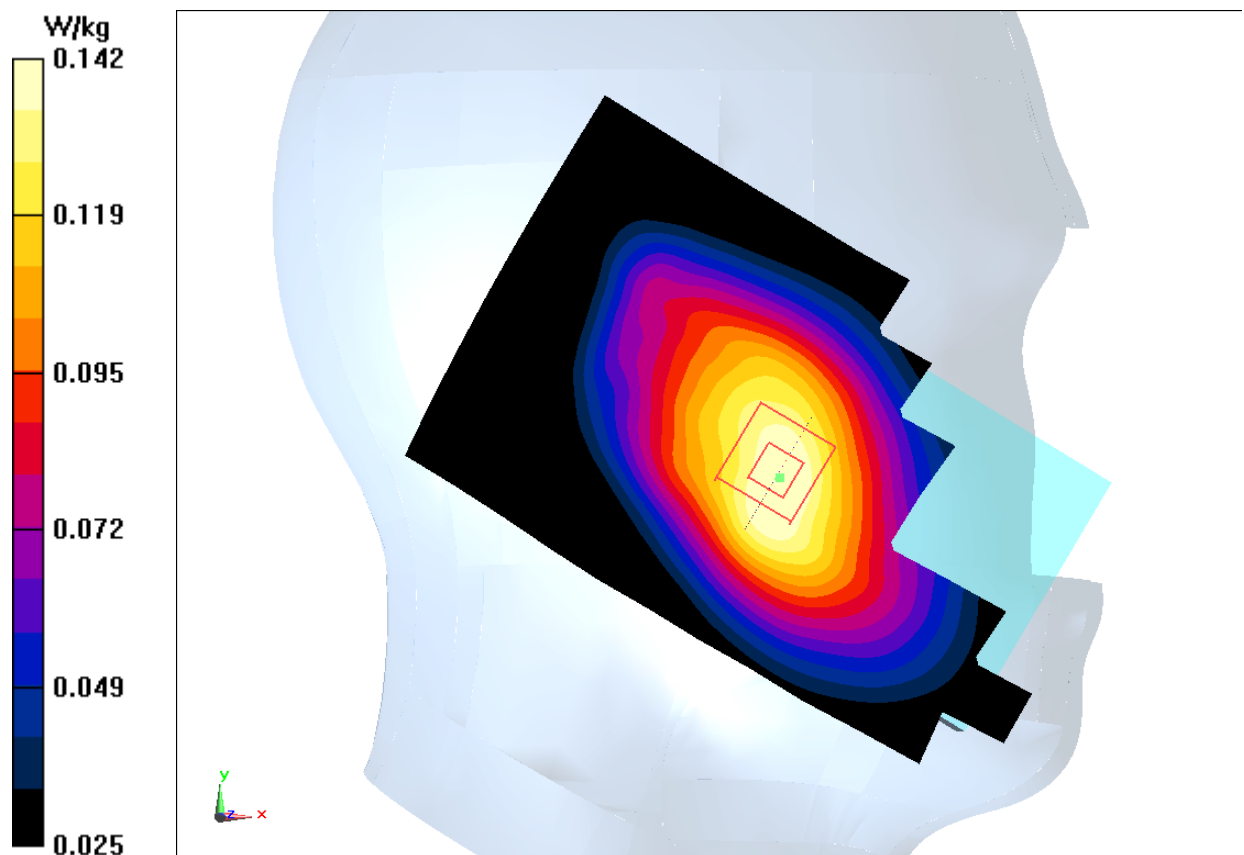


Fig.22 LTE Band 17

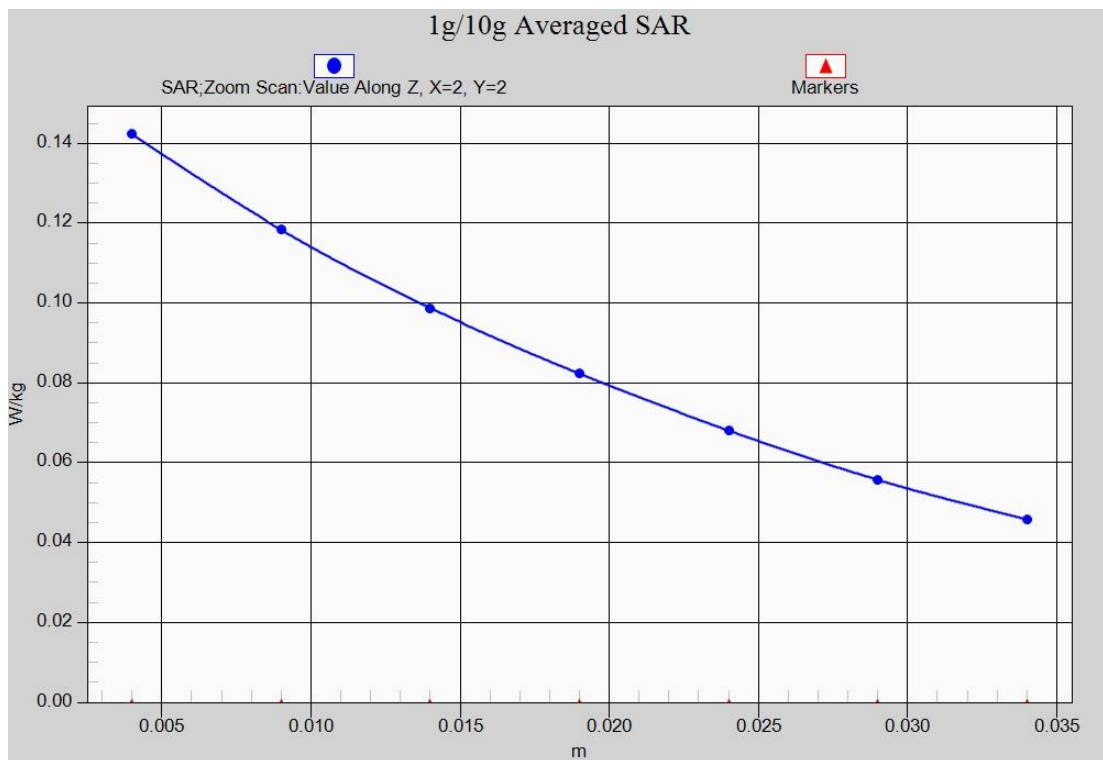


Fig.22-1 Z-Scan at power reference point

LTE Band 17 Body Rear Low with QPSK_20MHz_1RB_Low

Date/Time: 2015/7/24

Electronics: DAE4 Sn786

Medium: Body 750 MHz

Medium parameters used (interpolated): $f = 711$ MHz; $\sigma = 0.88$ S/m; $\epsilon_r = 56.586$; $\rho = 1000$ kg/m³

Ambient Temperature: 23.0°C Liquid Temperature: 22.5°C

Communication System: UID 0, LTE Band 17 (0) Frequency: 711 MHz Duty Cycle: 1:1

Probe: EX3DV4 - SN3617 ConvF(9.53, 9.53, 9.53);

Area Scan (121x71x1): Interpolated grid: dx=1.500 mm, dy=1.500 mm

Maximum value of SAR (interpolated) = 0.262 W/kg

Zoom Scan (7x7x7)/Cube 0: Measurement grid: dx=5mm, dy=5mm, dz=5mm

Reference Value = 16.36 V/m; Power Drift = -0.09 dB

Peak SAR (extrapolated) = 0.287 W/kg

SAR(1 g) = 0.233 W/kg; SAR(10 g) = 0.182 W/kg

Maximum value of SAR (measured) = 0.264 W/kg

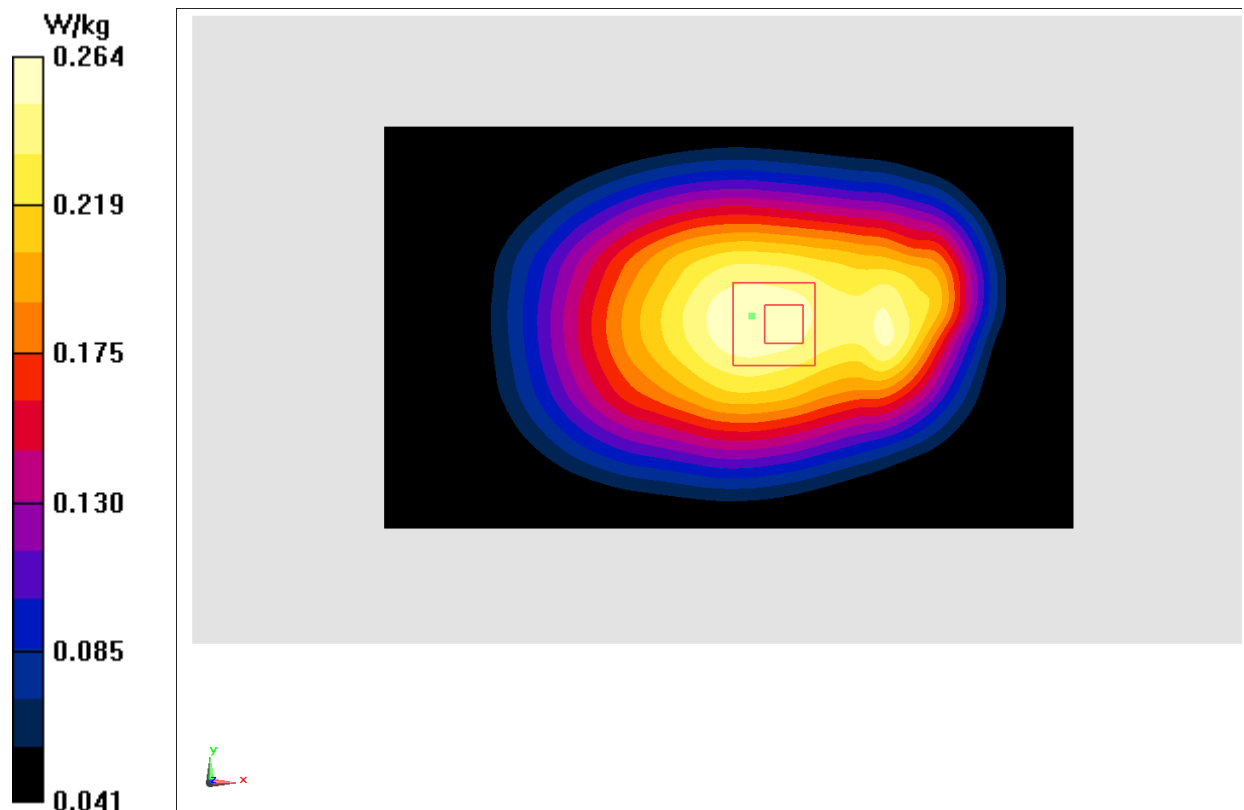


Fig.23 LTE Band 17

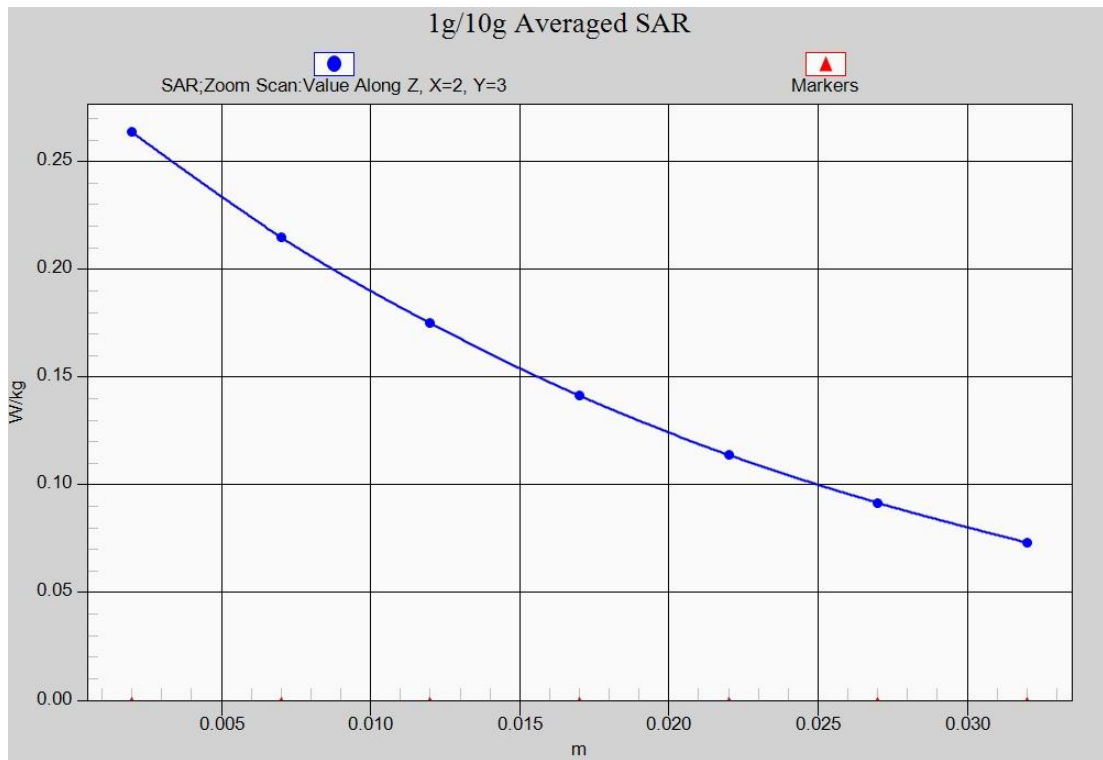


Fig.23-1 Z-Scan at power reference point (Band 17)

Wi-Fi 802.11b Left Cheek Channel 6

Date/Time: 2015-8-13

Electronics: DAE4 Sn786

Medium: Head 2450

Medium parameters used (interpolated): $f = 2437$ MHz; $\sigma = 1.863$ S/m; $\epsilon_r = 39.377$; $\rho = 1000$ kg/m³

Ambient Temperature: 22.0°C Liquid Temperature: 21.5°C

Communication System: WiFi Frequency: 2437 MHz Duty Cycle: 1:1

Probe: ES3DV3 - SN3151 ConvF(4.71, 4.71, 4.71); Calibrated: 2014-9-1

left/Cheek Middle/Area Scan (51x81x1): Interpolated grid: dx=2.000 mm, dy=2.000 mm

Maximum value of SAR (interpolated) = 0.103 W/kg

left/Cheek Middle/Zoom Scan (7x7x7)/Cube 0: Measurement grid: dx=5mm, dy=5mm, dz=5mm

Reference Value = 4.168 V/m; Power Drift = 0.17 dB

Peak SAR (extrapolated) = 0.231 W/kg

SAR(1 g) = 0.100 W/kg; SAR(10 g) = 0.046 W/kg

Maximum value of SAR (measured) = 0.104 W/kg

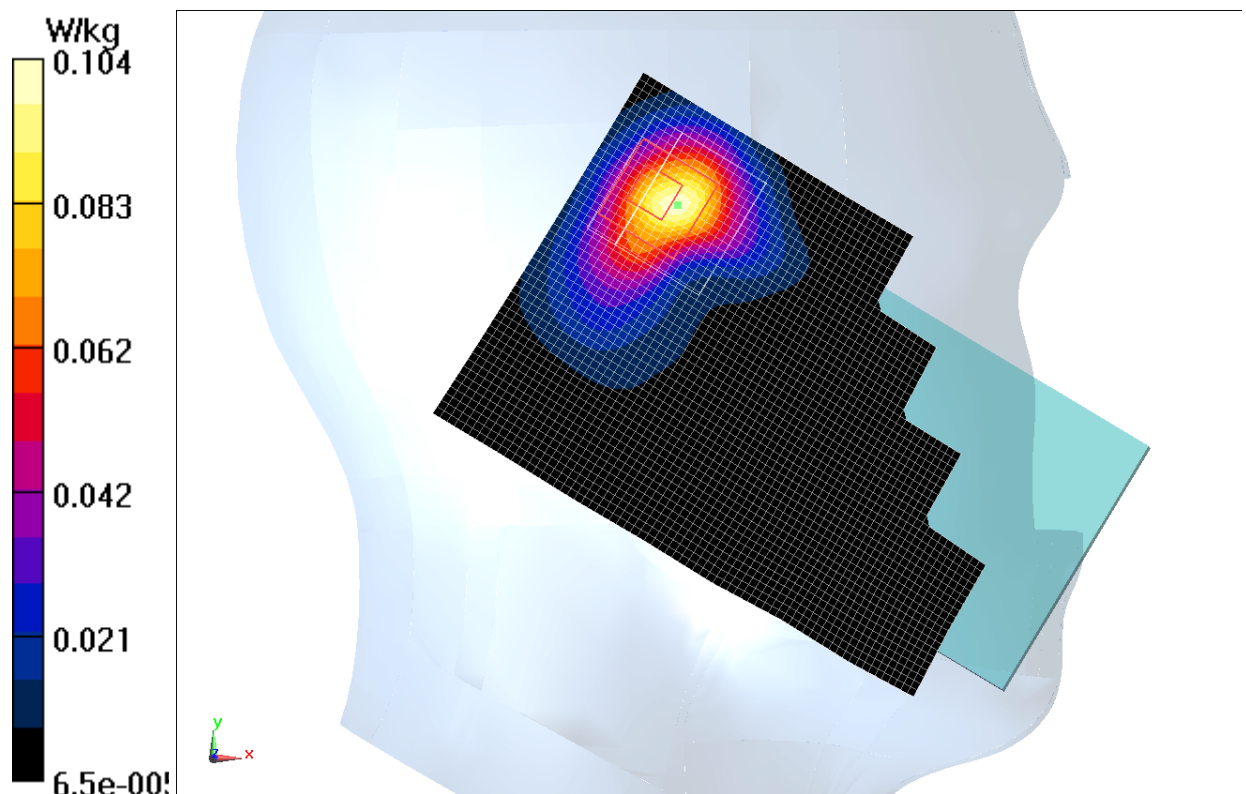


Fig.24 Wi-Fi 2450 MHz CH6

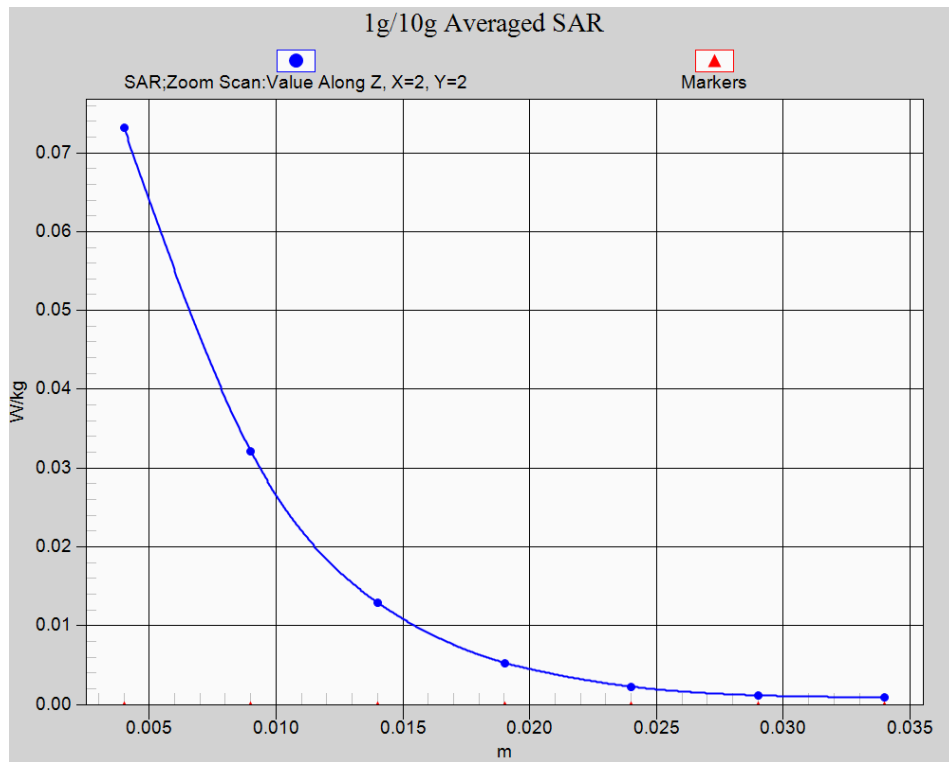


Fig.24-1 Z-Scan at power reference point (Wi-Fi 2450 MHz CH6)

Wi-Fi 802.11b Body Rear Channel 6

Date/Time: 2015-8-9

Electronics: DAE4 Sn786

Medium: Body 2450

Medium parameters used (interpolated): $f = 2437$ MHz; $\sigma = 1.961$ S/m; $\epsilon_r = 51.307$; $\rho = 1000$ kg/m³

Ambient Temperature: 22.0°C

Liquid Temperature: 21.5°C

Communication System: WiFi Frequency: 2437 MHz Duty Cycle: 1:1

Probe: ES3DV3 - SN3151 ConvF(4.42, 4.42, 4.42); Calibrated: 2014-9-1

Rear Middle/Area Scan (41x81x1): Interpolated grid: $dx=1.500$ mm, $dy=1.500$ mm

Maximum value of SAR (interpolated) = 0.0267 W/kg

Rear Middle/Zoom Scan (7x7x7)/Cube 0: Measurement grid: $dx=7$ mm, $dy=7$ mm, $dz=5$ mm

Reference Value = 0.652 V/m; Power Drift = -0.15 dB

Peak SAR (extrapolated) = 0.0470 W/kg

SAR(1 g) = 0.022 W/kg; SAR(10 g) = 0.011 W/kg

Maximum value of SAR (measured) = 0.0233 W/kg

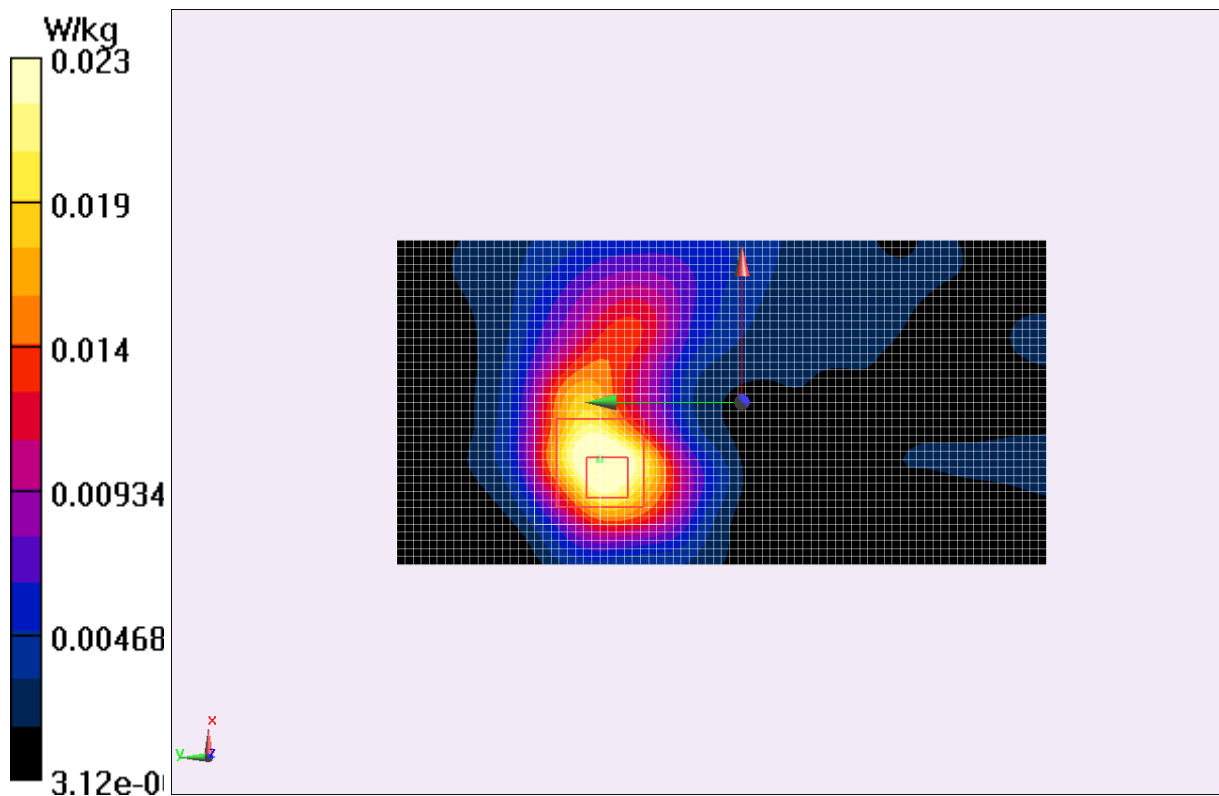


Fig.25 Wi-Fi 2450 MHz CH6

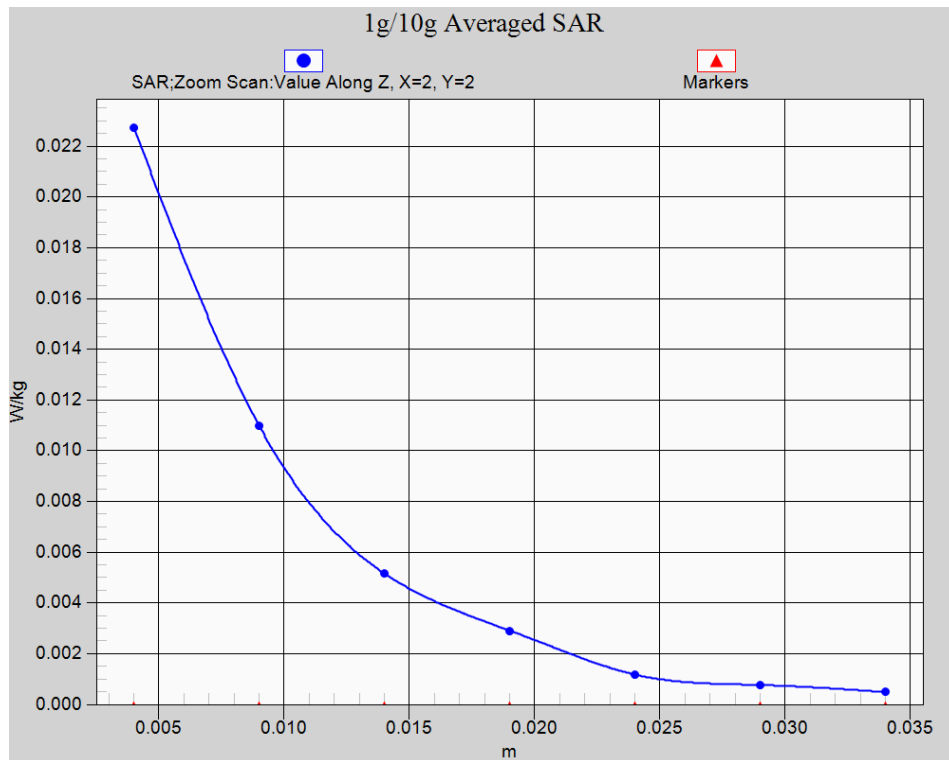


Fig.25-1 Z-Scan at power reference point (Wi-Fi 2450 MHz CH6)

ANNEX B System Verification Results

750MHz

Date: 2015-7-25

Electronics: DAE4 Sn786

Medium: Head 750 MHz

Medium parameters used: $f = 750 \text{ MHz}$; $\sigma = 0.87 \text{ mho/m}$; $\epsilon_r = 42.18$; $\rho = 1000 \text{ kg/m}^3$

Ambient Temperature: 22.5°C Liquid Temperature: 22.0°C

Communication System: CW Frequency: 750 MHz Duty Cycle: 1:1

Probe: EX3DV4 - SN3617 ConvF(10.02, 10.02, 10.02)

System Validation /Area Scan (81x191x1): Interpolated grid: $dx=1.000 \text{ mm}$, $dy=1.000 \text{ mm}$

Reference Value = 50.427 V/m ; Power Drift = -0.05 dB

Fast SAR: SAR(1 g) = 2.15 W/kg ; SAR(10 g) = 1.41 W/kg

Maximum value of SAR (interpolated) = 2.30 W/kg

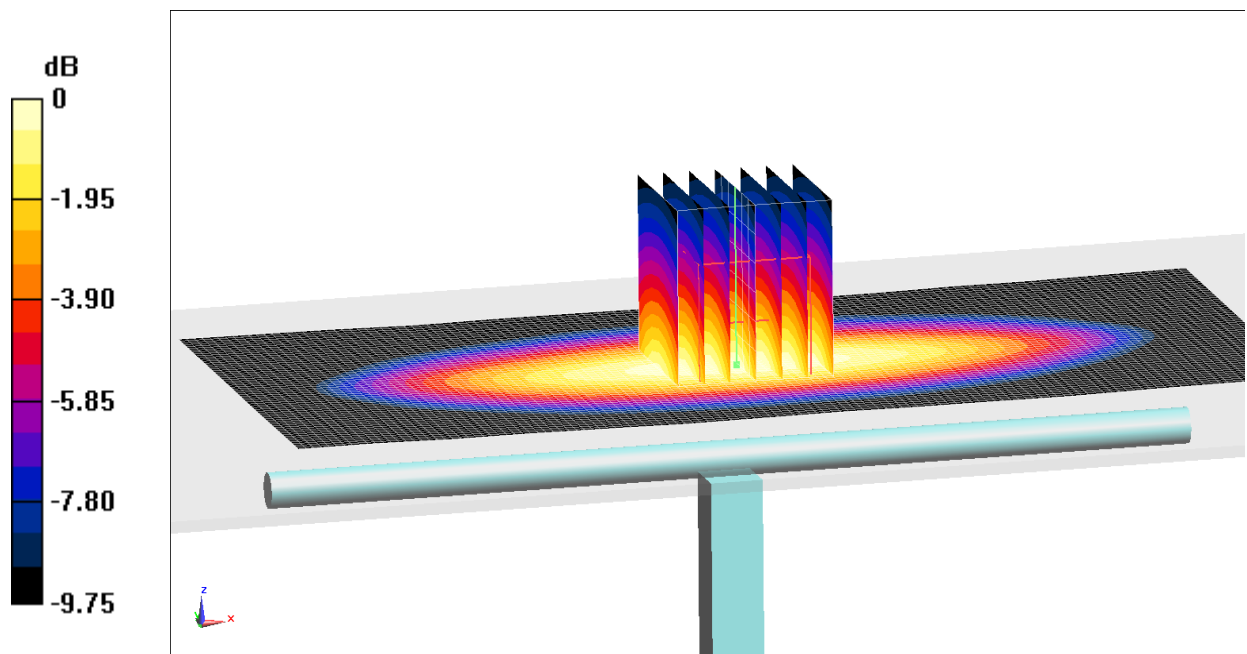
System Validation /Zoom Scan (7x7x7)/Cube 0: Measurement grid: $dx=5\text{mm}$, $dy=5\text{mm}$, $dz=5\text{mm}$

Reference Value = 50.427 V/m ; Power Drift = -0.05 dB

Peak SAR (extrapolated) = 2.99 W/kg

SAR(1 g) = 2.12 W/kg ; SAR(10 g) = 1.39 W/kg

Maximum value of SAR (measured) = 2.27 W/kg



0 dB = 2.27 W/kg = 3.56 dB W/kg

Fig.B.1 validation 750MHz 250mW

750MHz

Date: 2015-7-24

Electronics: DAE4 Sn786

Medium: Body750 MHz

Medium parameters used: $f = 750 \text{ MHz}$; $\sigma = 0.936 \text{ mho/m}$; $\epsilon_r = 57.38$; $\rho = 1000 \text{ kg/m}^3$

Ambient Temperature: 22.5°C Liquid Temperature: 22.0°C

Communication System: CW Frequency: 750 MHz Duty Cycle: 1:1

Probe: EX3DV4 - SN3617 ConvF(9.53, 9.53, 9.53)

System Validation/Area Scan (81x191x1): Interpolated grid: $dx=1.000 \text{ mm}$, $dy=1.000 \text{ mm}$

Reference Value = 51.785 V/m ; Power Drift = -0.02 dB

Fast SAR: SAR(1 g) = 2.24 W/kg ; SAR(10 g) = 1.48 W/kg

Maximum value of SAR (interpolated) = 2.38 W/kg

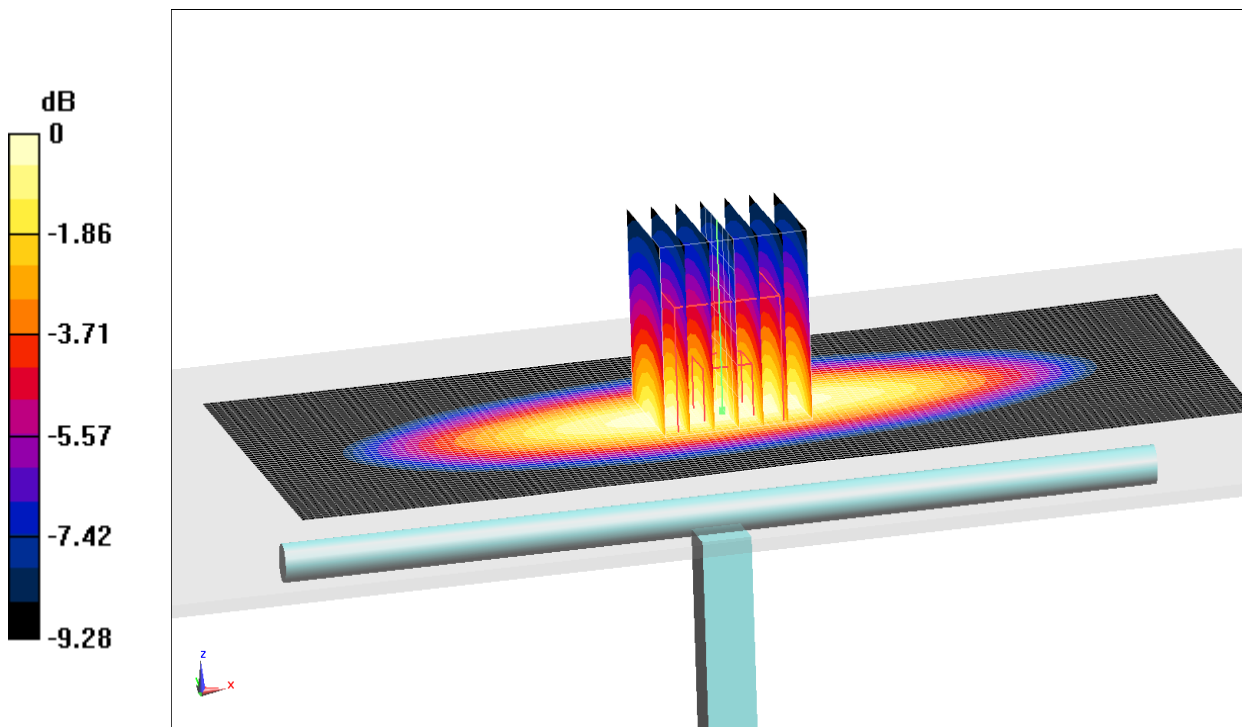
System Validation/Zoom Scan (7x7x7)/Cube 0: Measurement grid: $dx=5\text{mm}$, $dy=5\text{mm}$, $dz=5\text{mm}$

Reference Value = 51.785 V/m ; Power Drift = -0.02 dB

Peak SAR (extrapolated) = 3.11 W/kg

SAR(1 g) = 2.22 W/kg ; SAR(10 g) = 1.47 W/kg

Maximum value of SAR (measured) = 2.37 W/kg



$0 \text{ dB} = 2.37 \text{ W/kg} = 3.75 \text{ dB W/kg}$

Fig.B.2 validation 750MHz 250mW

835MHz

Date/Time: 2015-7-21

Electronics: DAE4 Sn786

Medium: Head 850 MHz

Medium parameters used (interpolated): $f = 835 \text{ MHz}$; $\sigma = 0.937 \text{ S/m}$; $\epsilon_r = 41.326$; $\rho = 1000 \text{ kg/m}^3$

Ambient Temperature: 22.0°C Liquid Temperature: 21.5°C

Communication System: CW_TMC Frequency: 835 MHz Duty Cycle: 1:1

Probe: ES3DV3 - SN3151 ConvF(6.04, 6.04, 6.04); Calibrated: 2014-9-1

Configuration /Area Scan (31x91x1): Interpolated grid: $dx=1.000 \text{ mm}$, $dy=1.000 \text{ mm}$

SAR(1 g) = 2.38 W/kg; SAR(10 g) = 1.47 W/kg

Maximum value of SAR (interpolated) = 2.48 W/kg

Configuration /Zoom Scan (7x7x7)/Cube 0: Measurement grid: $dx=5\text{mm}$, $dy=5\text{mm}$, $dz=5\text{mm}$

Reference Value = 54.349 V/m; Power Drift = -0.01 dB

Peak SAR (extrapolated) = 3.75 W/kg

SAR(1 g) = 2.41 W/kg; SAR(10 g) = 1.55 W/kg

Maximum value of SAR (measured) = 2.62 W/kg

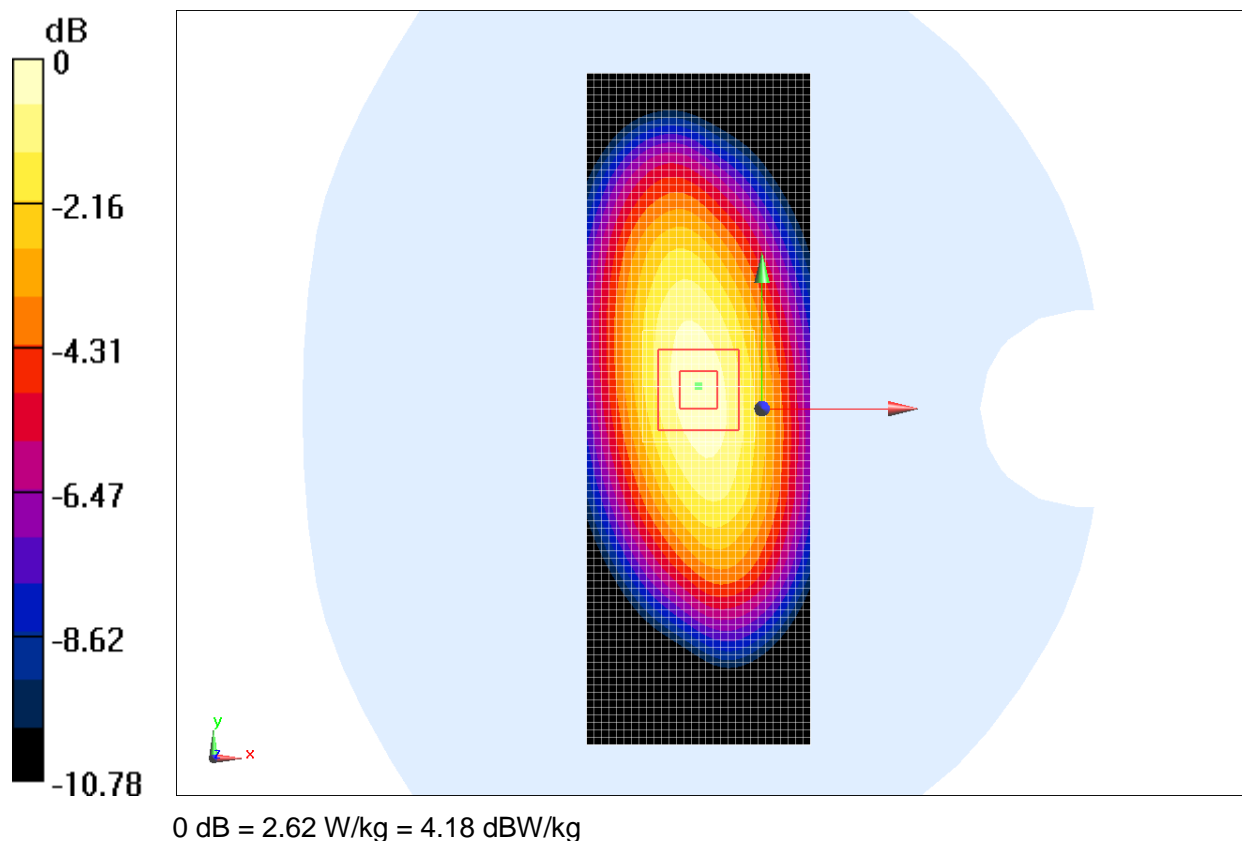


Fig.B.1 validation 835MHz 250mW

835MHz

Date/Time: 2015-8-8

Electronics: DAE4 Sn786

Medium: Body850 MHz

Medium parameters used (interpolated): $f = 835$ MHz; $\sigma = 0.98$ S/m; $\epsilon_r = 53.516$; $\rho = 1000$ kg/m³

Ambient Temperature: 22.0°C Liquid Temperature: 21.5°C

Communication System: CW_TMC Frequency: 835 MHz Duty Cycle: 1:1

Probe: ES3DV3 - SN3151 ConvF(6.14, 6.14, 6.14); Calibrated: 2014-9-1

Configuration/Area Scan (61x181x1): Interpolated grid: $dx=1.000$ mm, $dy=1.000$ mm

SAR(1 g) = 2.41 W/kg; SAR(10 g) = 1.51 W/kg

Maximum value of SAR (interpolated) = 2.64 W/kg

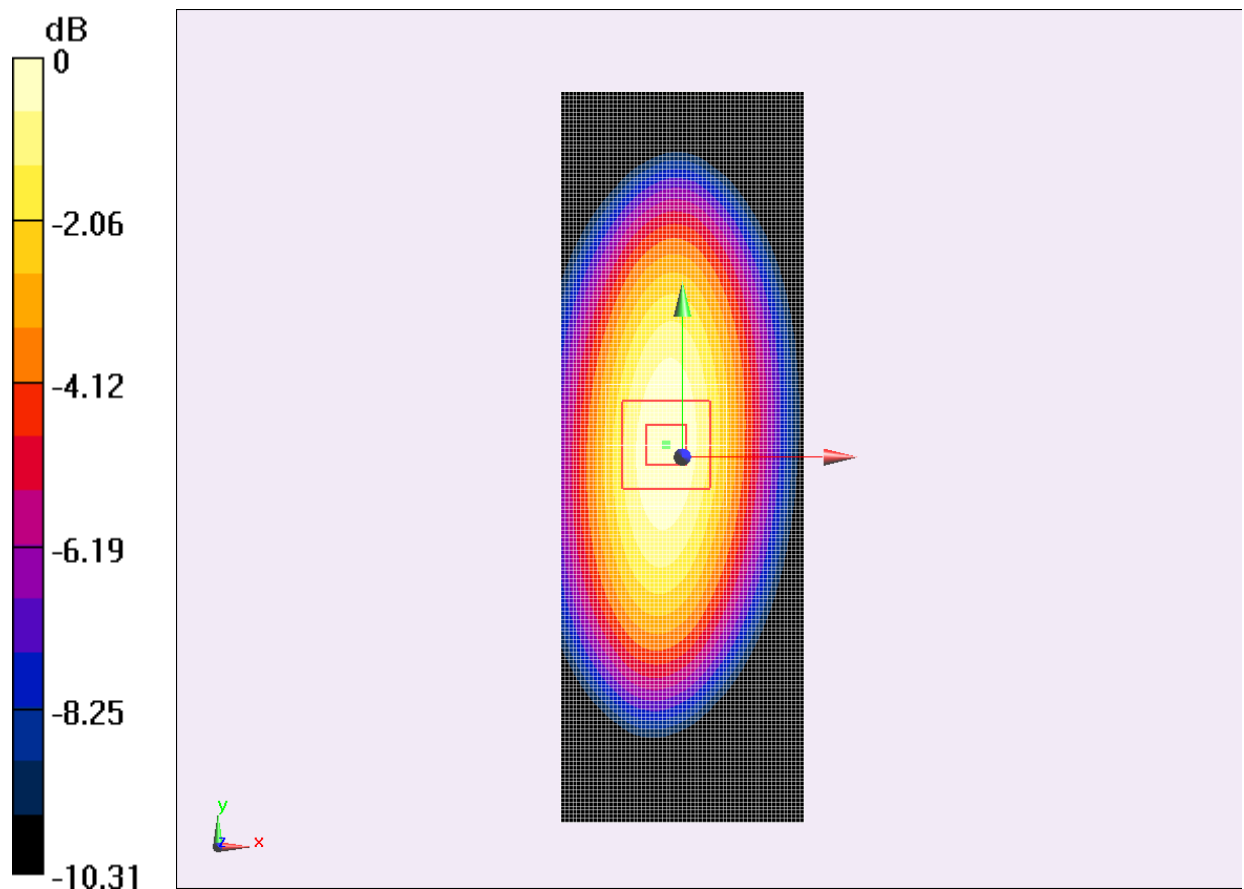
Configuration/Zoom Scan (7x7x7)/Cube 0: Measurement grid: $dx=5$ mm, $dy=5$ mm, $dz=5$ mm

Reference Value = 51.989 V/m; Power Drift = 0.06 dB

Peak SAR (extrapolated) = 3.60 W/kg

SAR(1 g) = 2.43 W/kg; SAR(10 g) = 1.59 W/kg

Maximum value of SAR (measured) = 2.64 W/kg



0 dB = 2.64 W/kg = 4.22 dBW/kg

Fig.B.2 validation 835MHz 250mW

1800MHz

Date/Time: 2015-8-10

Electronics: DAE4 Sn786

Medium: Head 1800 MHz

Medium parameters used: $f = 1800 \text{ MHz}$; $\sigma = 1.365 \text{ S/m}$; $\epsilon_r = 40.834$; $\rho = 1000 \text{ kg/m}^3$

Ambient Temperature: 22.0°C Liquid Temperature: 21.5°C

Communication System: CW_TMC Frequency: 1800 MHz Duty Cycle: 1:1

Probe: ES3DV3 - SN3151 ConvF(5.44, 5.44, 5.44); Calibrated: 2014-9-1

Configuration/Area Scan (61x121x1): Interpolated grid: $dx=1.000 \text{ mm}$, $dy=1.000 \text{ mm}$

SAR(1 g) = 9.41 W/kg; SAR(10 g) = 5.02 W/kg

Maximum value of SAR (interpolated) = 10.4 W/kg

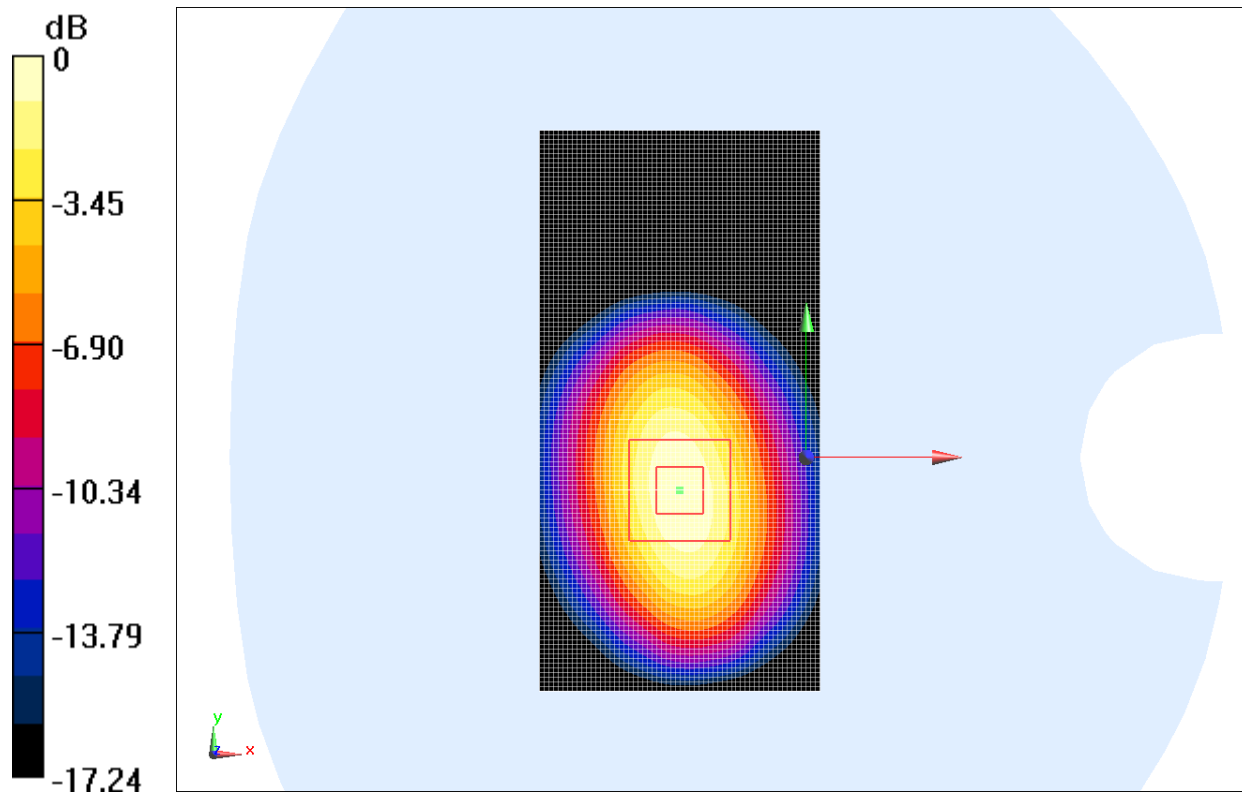
Configuration/Zoom Scan (7x7x7)/Cube 0: Measurement grid: $dx=5\text{mm}$, $dy=5\text{mm}$, $dz=5\text{mm}$

Reference Value = 87.788 V/m; Power Drift = 0.09 dB

Peak SAR (extrapolated) = 16.7 W/kg

SAR(1 g) = 9.42 W/kg; SAR(10 g) = 5.05 W/kg

Maximum value of SAR (measured) = 11.0 W/kg



0 dB = 11.0 W/kg = 10.41 dBW/kg

Fig.B.3 validation 1800MHz 250mW

1800MHz

Date/Time: 2015-8-1

Electronics: DAE4 Sn786

Medium: 1800 Body

Medium parameters used: $f = 1800 \text{ MHz}$; $\sigma = 1.453 \text{ S/m}$; $\epsilon_r = 51.017$; $\rho = 1000 \text{ kg/m}^3$

Ambient Temperature: 22.0°C Liquid Temperature: 21.5°C

Communication System: CW_TMC Frequency: 1800 MHz Duty Cycle: 1:1

Probe: ES3DV3 - SN3151 ConvF(5.03, 5.03, 5.03); Calibrated: 2014-9-1

Configuration/Area Scan (61x121x1): Interpolated grid: $dx=1.000 \text{ mm}$, $dy=1.000 \text{ mm}$

SAR(1 g) = 9.87 W/kg; SAR(10 g) = 5.07 W/kg

Maximum value of SAR (interpolated) = 10.1 W/kg

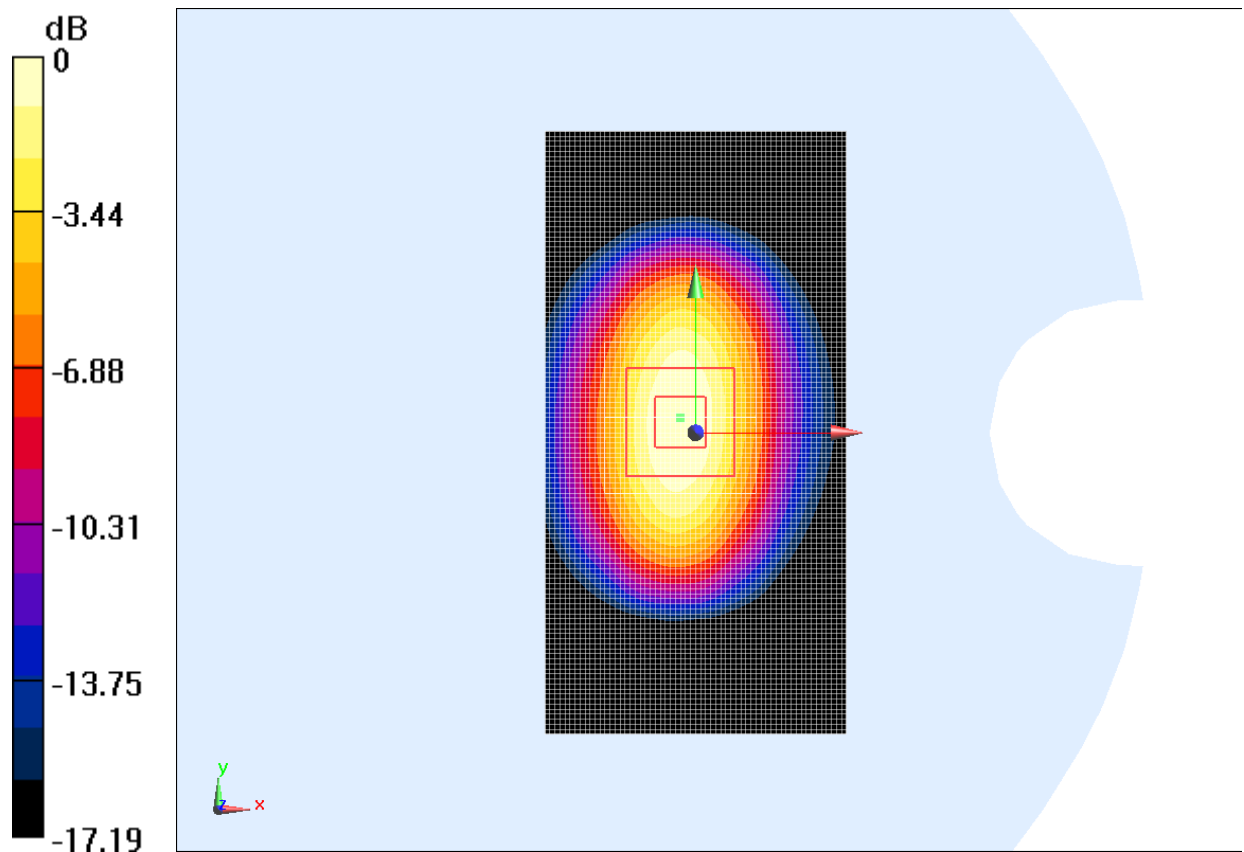
Configuration/Zoom Scan (7x7x7)/Cube 0: Measurement grid: $dx=5\text{mm}$, $dy=5\text{mm}$, $dz=5\text{mm}$

Reference Value = 82.581 V/m ; Power Drift = 0.03 dB

Peak SAR (extrapolated) = 16.3 W/kg

SAR(1 g) = 9.92 W/kg; SAR(10 g) = 5.15 W/kg

Maximum value of SAR (measured) = 10.4 W/kg



0 dB = 10.4 W/kg = 10.17 dBW/kg

Fig.B.4 validation 1800MHz 250mW

1900MHz

Date/Time: 2015-7-28

Electronics: DAE4 Sn786

Medium: 1900 Head

Medium parameters used: $f = 1900 \text{ MHz}$; $\sigma = 1.451 \text{ S/m}$; $\epsilon_r = 40.468$; $\rho = 1000 \text{ kg/m}^3$

Ambient Temperature: 22.0°C Liquid Temperature: 21.5°C

Communication System: CW_TMC Frequency: 1900 MHz Duty Cycle: 1:1

Probe: ES3DV3 - SN3151 ConvF(5.16, 5.16, 5.16); Calibrated: 2014-9-1

Configuration/Area Scan (61x121x1): Interpolated grid: $dx=1.000 \text{ mm}$, $dy=1.000 \text{ mm}$

SAR(1 g) = 9.89 W/kg; SAR(10 g) = 5.06 W/kg

Maximum value of SAR (interpolated) = 11.0 W/kg

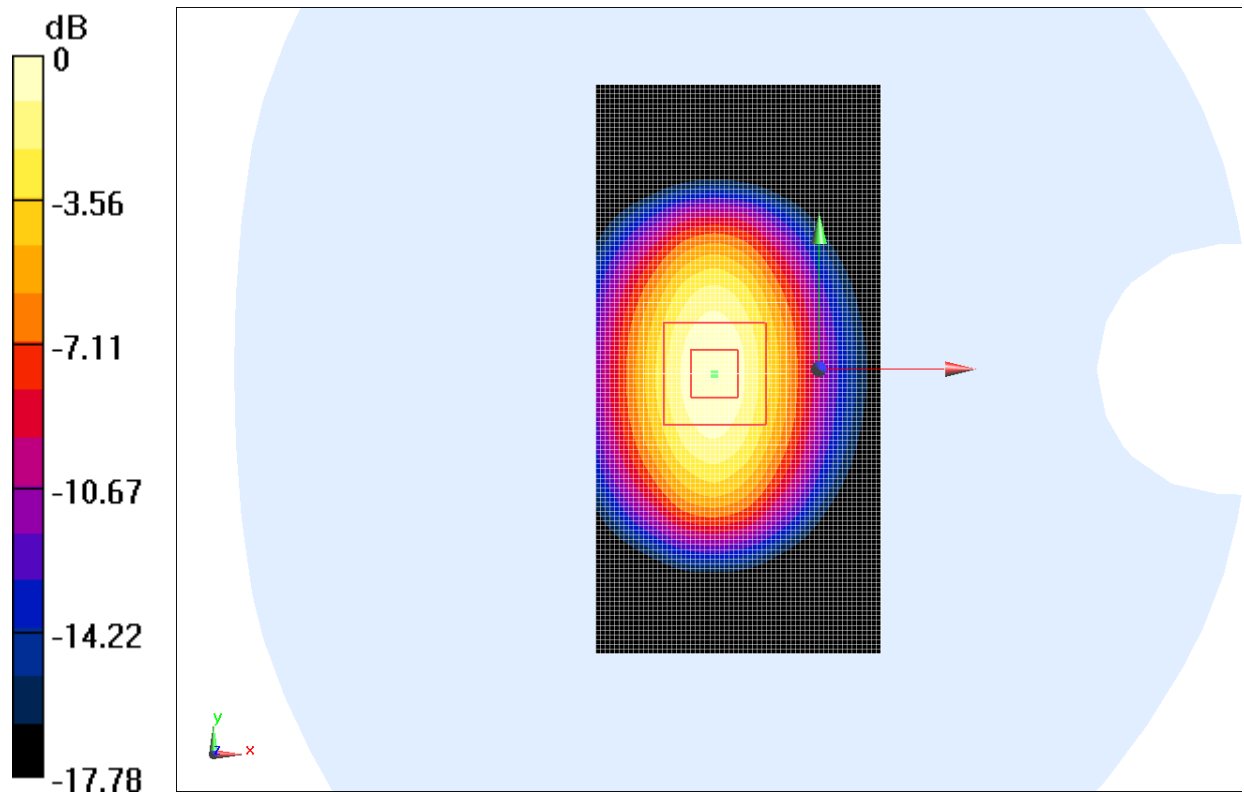
Configuration/Zoom Scan (7x7x7)/Cube 0: Measurement grid: $dx=5\text{mm}$, $dy=5\text{mm}$, $dz=5\text{mm}$

Reference Value = 81.837 V/m; Power Drift = 0.18 dB

Peak SAR (extrapolated) = 18.8 W/kg

SAR(1 g) = 9.94 W/kg; SAR(10 g) = 5.12 W/kg

Maximum value of SAR (measured) = 11.2 W/kg



0 dB = 11.2 W/kg = 10.49 dBW/kg

Fig.B.3 validation 1900MHz 250mW

1900MHz

Date/Time: 2015-8-1

Electronics: DAE4 Sn786

Medium: Body 1900MHz

Medium parameters used: $f = 1900 \text{ MHz}$; $\sigma = 1.532 \text{ S/m}$; $\epsilon_r = 50.831$; $\rho = 1000 \text{ kg/m}^3$

Ambient Temperature: 22.0°C Liquid Temperature: 21.5°C

Communication System: CW_TMC Frequency: 1900 MHz Duty Cycle: 1:1

Probe: ES3DV3 - SN3151 ConvF(4.7, 4.7, 4.7);

Configuration/Area Scan (61x121x1): Interpolated grid: $dx=1.000 \text{ mm}$, $dy=1.000 \text{ mm}$

SAR(1 g) = 10.27 W/kg; SAR(10 g) = 5.49 W/kg

Maximum value of SAR (interpolated) = 12.4 W/kg

Configuration/Zoom Scan (7x7x7)/Cube 0: Measurement grid: $dx=5\text{mm}$, $dy=5\text{mm}$, $dz=5\text{mm}$

Reference Value = 58.846 V/m ; Power Drift = 0.12 dB

Peak SAR (extrapolated) = 19.2 W/kg

SAR(1 g) = 10.30 W/kg; SAR(10 g) = 5.54 W/kg

Maximum value of SAR (measured) = 12.2 W/kg

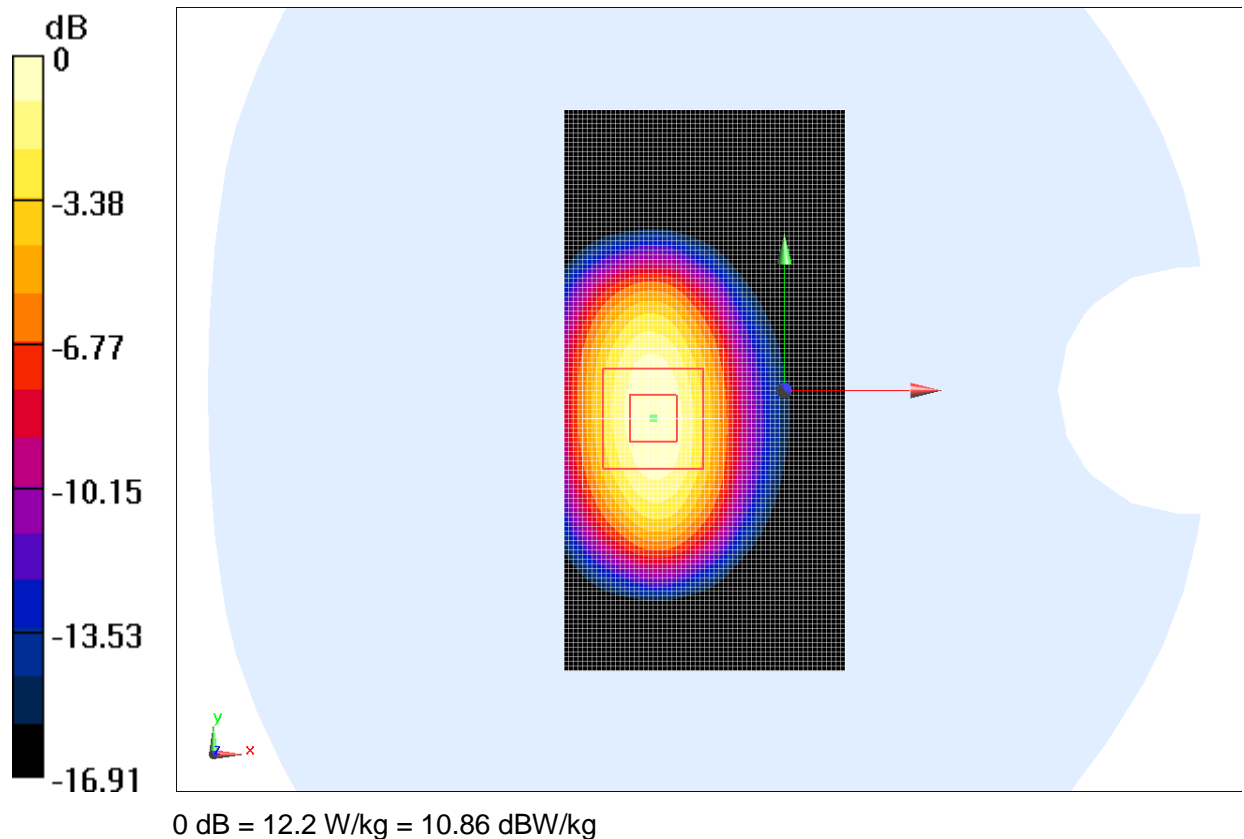


Fig.B.4 validation 1900MHz 250mW

2450MHz

Date/Time: 2015-8-13

Electronics: DAE4 Sn786

Medium: Head 2450

Medium parameters used: $f = 2450$ MHz; $\sigma = 1.879$ S/m; $\epsilon_r = 39.336$; $\rho = 1000$ kg/m³

Ambient Temperature: 22.5°C Liquid Temperature: 22.0°C

Communication System: CW_TMC Frequency: 2450 MHz Duty Cycle: 1:1

Probe: ES3DV3 - SN3151 ConvF(4.71, 4.71, 4.71); Calibrated: 2014-9-1

Configuration/Area Scan (61x121x1): Interpolated grid: dx=1.000 mm, dy=1.000 mm

SAR(1 g) = 13.76 W/kg; SAR(10 g) = 6.12 W/kg

Maximum value of SAR (interpolated) = 15.8 W/kg

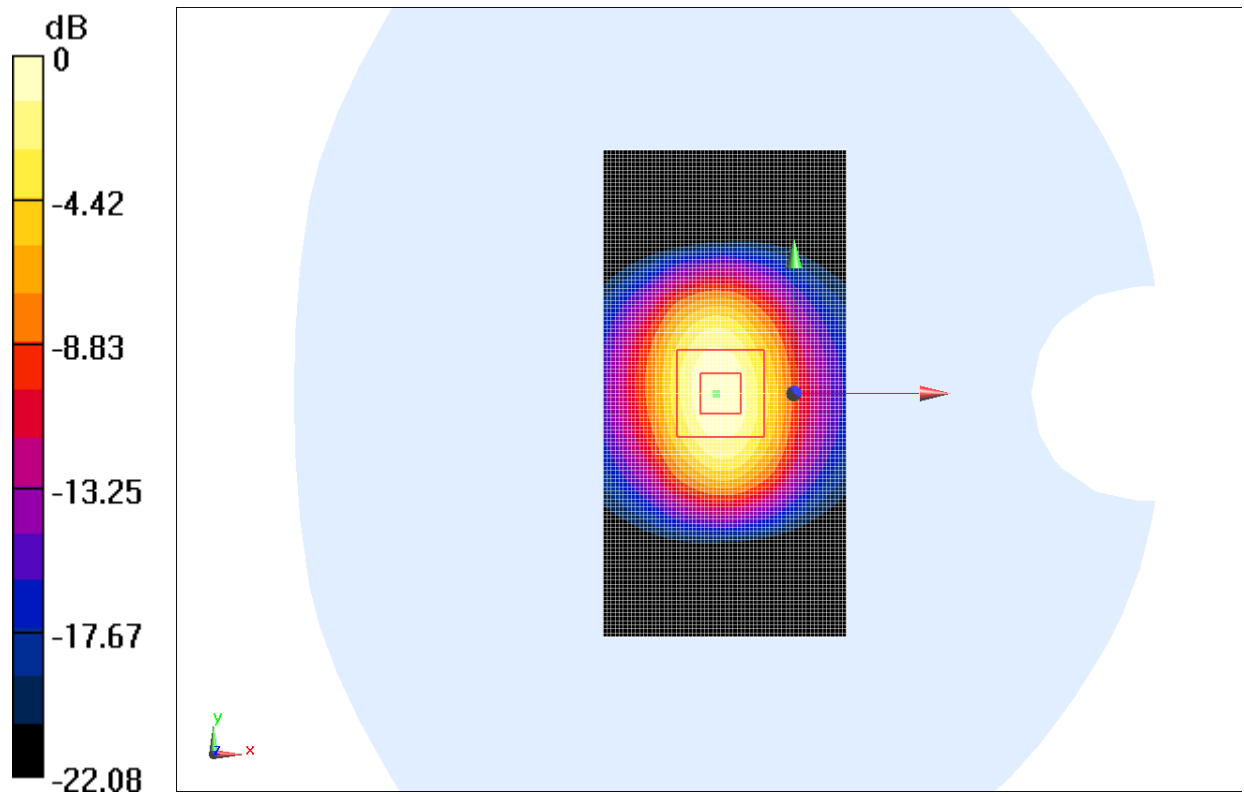
Configuration/Zoom Scan (7x7x7)/Cube 0: Measurement grid: dx=5mm, dy=5mm, dz=5mm

Reference Value = 92.372 V/m; Power Drift = 0.04 dB

Peak SAR (extrapolated) = 29.7 W/kg

SAR(1 g) = 13.78 W/kg; SAR(10 g) = 6.16 W/kg

Maximum value of SAR (measured) = 15.7 W/kg



0 dB = 15.7 W/kg = 11.96 dBW/kg

Fig.B.5 validation 2450MHz 250mW

2450MHz

Date/Time: 2015-8-13

Electronics: DAE4 Sn786

Medium: Body 2450

Medium parameters used: $f = 2450 \text{ MHz}$; $\sigma = 1.969 \text{ S/m}$; $\epsilon_r = 51.287$; $\rho = 1000 \text{ kg/m}^3$

Ambient Temperature: 22.0°C Liquid Temperature: 21.5°C

Communication System: CW_TMC Frequency: 2550 MHz Duty Cycle: 1:1

Probe: ES3DV3 - SN3151 ConvF(4.42, 4.42, 4.42); Calibrated: 2014-9-1

Configuration/Area Scan (61x121x1): Interpolated grid: $dx=1.000 \text{ mm}$, $dy=1.000 \text{ mm}$

Reference Value = 86.639 V/m ; Power Drift = 0.18 dB

SAR(1 g) = 13.4 W/kg ; SAR(10 g) = 6.28 W/kg

Maximum value of SAR (interpolated) = 16.5 W/kg

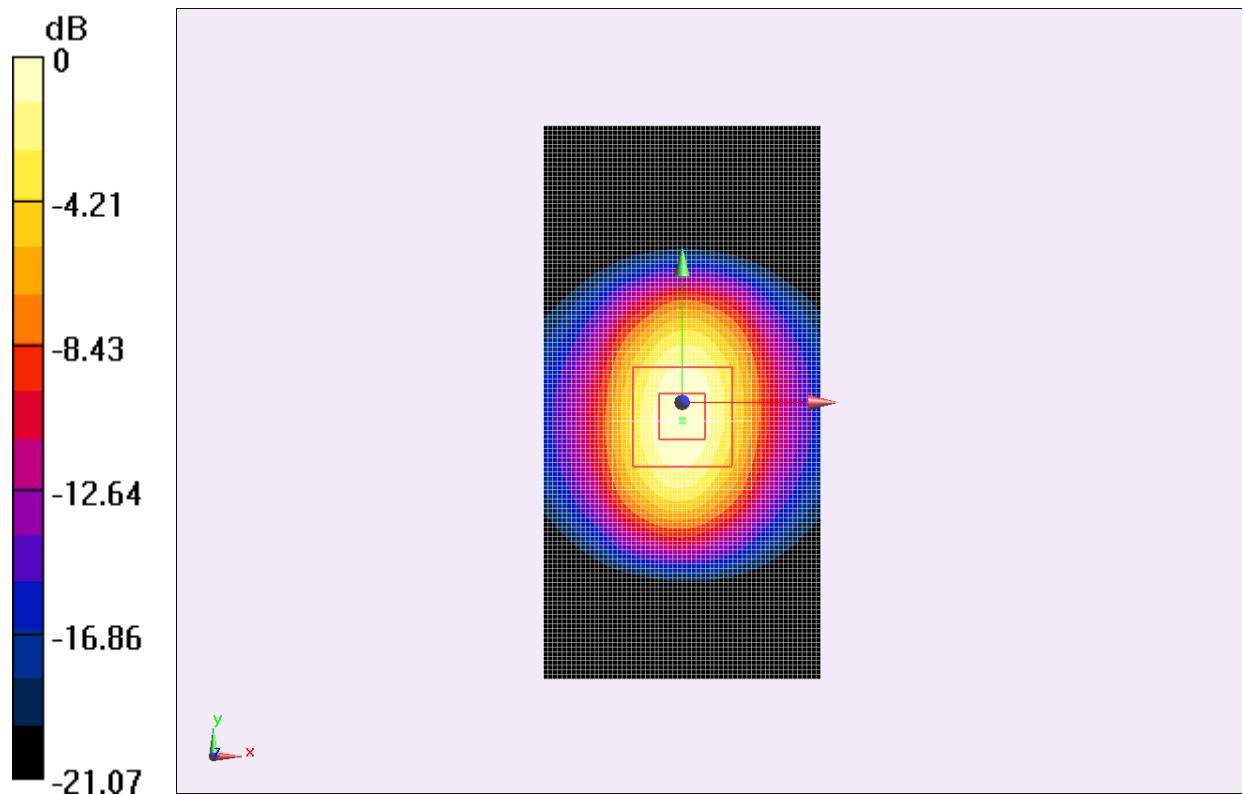
Configuration/Zoom Scan (7x7x7)/Cube 0: Measurement grid: $dx=5\text{mm}$, $dy=5\text{mm}$, $dz=5\text{mm}$

Reference Value = 86.639 V/m ; Power Drift = 0.10 dB

Peak SAR (extrapolated) = 29.7 W/kg

SAR(1 g) = 13.44 W/kg ; SAR(10 g) = 6.30 W/kg

Maximum value of SAR (measured) = 14.5 W/kg



0 dB = 14.5 W/kg = 11.61 dBW/kg

Fig.B.6 validation 2450MHz 250mW

2550MHz

Date/Time: 2015-8-1

Electronics: DAE4 Sn786

Medium: Head 2600 MHz

Medium parameters used: $f = 2550$ MHz; $\sigma = 1.982$ S/m; $\epsilon_r = 38.419$; $\rho = 1000$ kg/m³

Ambient Temperature: 22.0°C Liquid Temperature: 21.5°C

Communication System: CW_TMC Frequency: 2550 MHz Duty Cycle: 1:1

Probe: ES3DV3 - SN3151 ConvF(4.71, 4.71, 4.71); Calibrated: 2014-9-1

Configuration/Area Scan (61x121x1): Interpolated grid: dx=1.000 mm, dy=1.000 mm

SAR(1 g) = 14.78 W/kg; SAR(10 g) = 6.51 W/kg

Maximum value of SAR (interpolated) = 17.3 W/kg

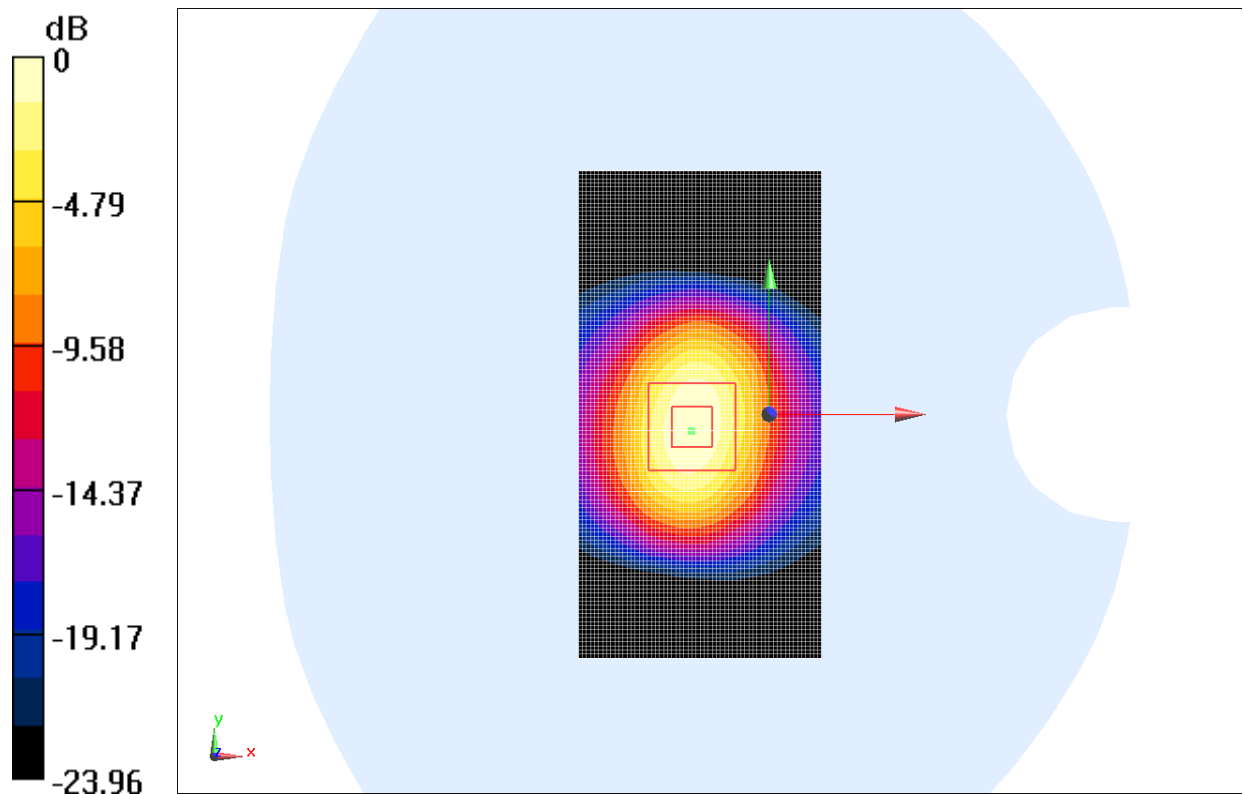
Configuration/Zoom Scan (7x7x7)/Cube 0: Measurement grid: dx=5mm, dy=5mm, dz=5mm

Reference Value = 95.185 V/m; Power Drift = -0.10 dB

Peak SAR (extrapolated) = 33.3 W/kg

SAR(1 g) = 14.82 W/kg; SAR(10 g) = 6.53 W/kg

Maximum value of SAR (measured) = 16.8 W/kg



0 dB = 16.8 W/kg = 12.25 dBW/kg

Fig.B.3 validation 2550MHz 250mW

2550MHz

Date/Time: 2015-8-9

Electronics: DAE4 Sn786

Medium: Body 2600

Medium parameters used: $f = 2550 \text{ MHz}$; $\sigma = 2.053 \text{ S/m}$; $\epsilon_r = 50.914$; $\rho = 1000 \text{ kg/m}^3$

Ambient Temperature: 22.0°C Liquid Temperature: 21.5°C

Communication System: CW_TMC Frequency: 2550 MHz Duty Cycle: 1:1

Probe: ES3DV3 - SN3151 ConvF(4.42, 4.42, 4.42); Calibrated: 2014-9-1

Configuration/Area Scan (61x121x1): Interpolated grid: $dx=1.000 \text{ mm}$, $dy=1.000 \text{ mm}$

SAR(1 g) = 13.56 W/kg; SAR(10 g) = 5.95 W/kg

Maximum value of SAR (interpolated) = 15.0 W/kg

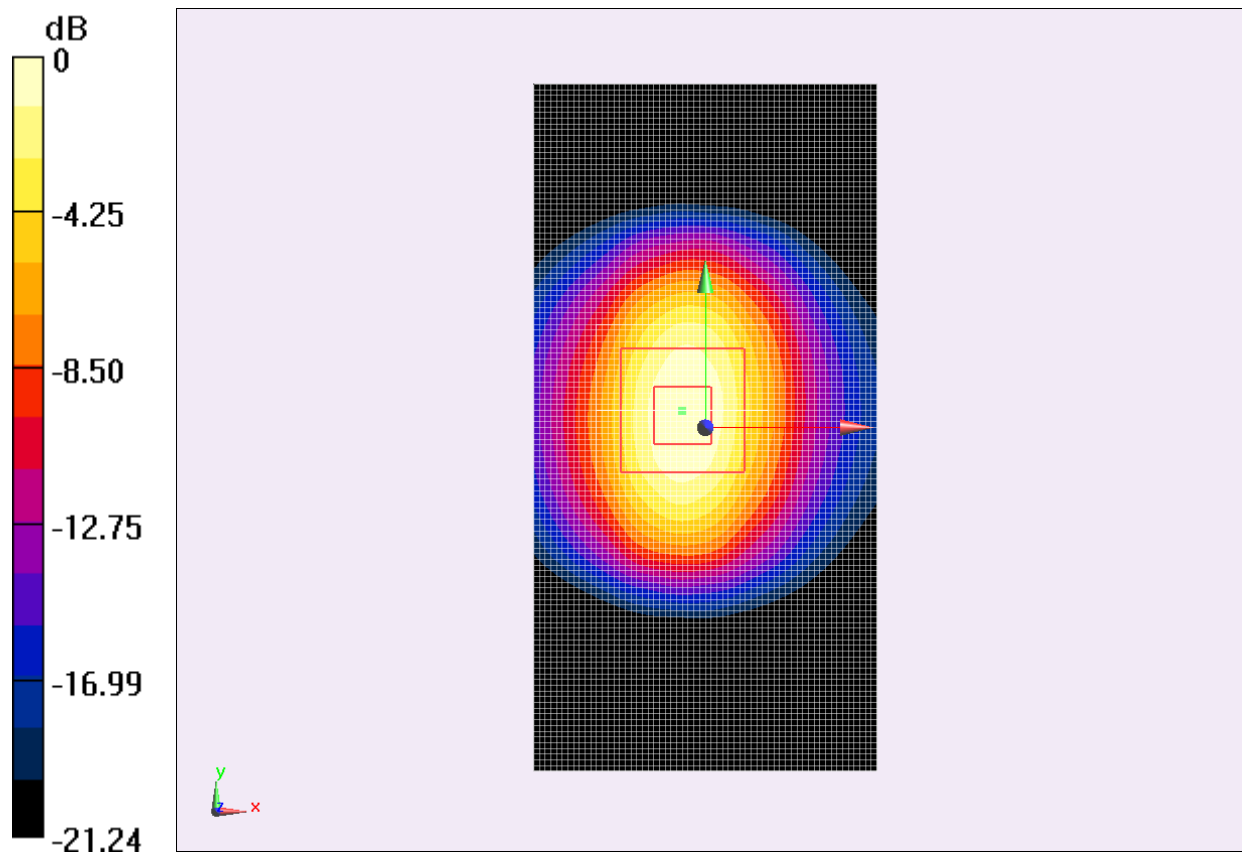
Configuration/Zoom Scan (7x7x7)/Cube 0: Measurement grid: $dx=5\text{mm}$, $dy=5\text{mm}$, $dz=5\text{mm}$

Reference Value = 86.639 V/m; Power Drift = 0.18 dB

Peak SAR (extrapolated) = 29.7 W/kg

SAR(1 g) = 13.62 W/kg; SAR(10 g) = 6.04 W/kg

Maximum value of SAR (measured) = 15.4 W/kg



0 dB = 15.4 W/kg = 11.88 dBW/kg

Fig.B.4 validation 2550MHz 250mW

The SAR system verification must be required that the area scan estimated 1-g SAR is within 3% of the zoom scan 1-g SAR.

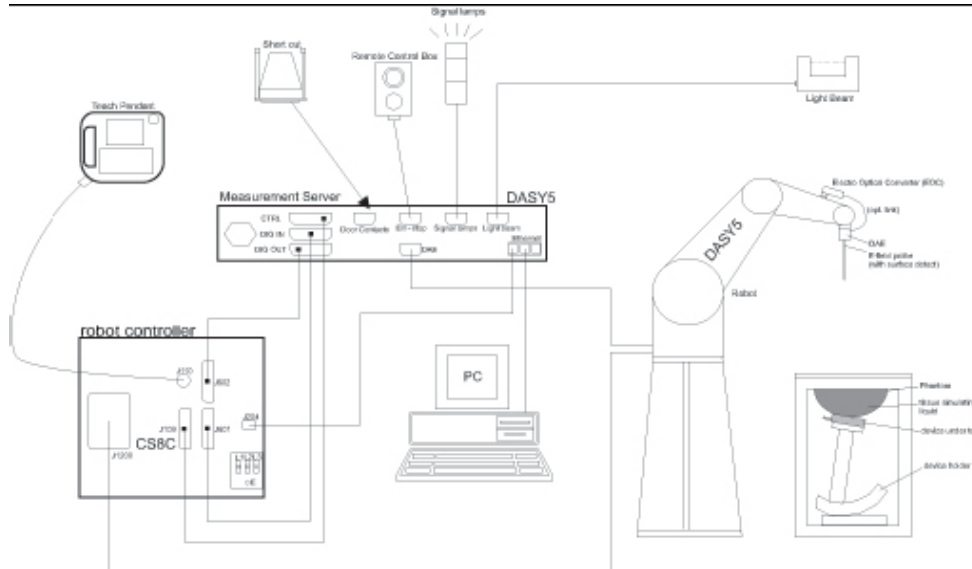
Table B.1 Comparison between area scan and zoom scan for system verification

Band	Position	Area scan (1g)	Zoom scan (1g)	Drift (%)
750	Head	2.15	2.12	1.42
750	Body	2.24	2.22	0.90
835	Head	2.38	2.41	-1.24
835	Body	2.41	2.43	-0.82
1800	Head	9.41	9.42	-0.11
1800	Body	9.87	9.92	-0.50
1900	Head	9.89	9.94	-0.50
1900	Body	10.27	10.30	-0.29
2450	Head	13.76	13.78	-0.15
2450	Body	13.40	13.44	-0.30
2550	Head	14.78	14.82	-0.27
2550	Body	13.56	13.62	-0.44

ANNEX C SAR Measurement Setup

C.1 Measurement Set-up

The Dasy4 or DASY5 system for performing compliance tests is illustrated above graphically. This system consists of the following items:



Picture C.1 SAR Lab Test Measurement Set-up

- A standard high precision 6-axis robot (Stäubli TX=RX family) with controller, teach pendant and software. An arm extension for accommodating the data acquisition electronics (DAE).
- An isotropic field probe optimized and calibrated for the targeted measurement.
- A data acquisition electronics (DAE) which performs the signal amplification, signal multiplexing, AD-conversion, offset measurements, mechanical surface detection, collision detection, etc. The unit is battery powered with standard or rechargeable batteries. The signal is optically transmitted to the EOC.
- The Electro-optical converter (EOC) performs the conversion from optical to electrical signals for the digital communication to the DAE. To use optical surface detection, a special version of the EOC is required. The EOC signal is transmitted to the measurement server.
- The function of the measurement server is to perform the time critical tasks such as signal filtering, control of the robot operation and fast movement interrupts.
- The Light Beam used is for probe alignment. This improves the (absolute) accuracy of the probe positioning.
- A computer running WinXP and the DASY4 or DASY5 software.
- Remote control and teach pendant as well as additional circuitry for robot safety such as warning lamps, etc.
- The phantom, the device holder and other accessories according to the targeted measurement.

C.2 Dasy4 or DASY5 E-field Probe System

The SAR measurements were conducted with the dosimetric probe designed in the classical triangular configuration and optimized for dosimetric evaluation. The probe is constructed using the thick film technique; with printed resistive lines on ceramic substrates. The probe is equipped with an optical multifiber line ending at the front of the probe tip. It is connected to the EOC box on the robot arm and provides an automatic detection of the phantom surface. Half of the fibers are connected to a pulsed infrared transmitter, the other half to a synchronized receiver. As the probe approaches the surface, the reflection from the surface produces a coupling from the transmitting to the receiving fibers. This reflection increases first during the approach, reaches maximum and then decreases. If the probe is flatly touching the surface, the coupling is zero. The distance of the coupling maximum to the surface is independent of the surface reflectivity and largely independent of the surface to probe angle. The DASY4 or DASY5 software reads the reflection during a software approach and looks for the maximum using 2nd order curve fitting. The approach is stopped at reaching the maximum.

Probe Specifications:

Model:	ES3DV3, EX3DV4
Frequency	10MHz — 6.0GHz(EX3DV4)
Range:	10MHz — 4GHz(ES3DV3)
Calibration:	In head and body simulating tissue at Frequencies from 835 up to 5800MHz
Linearity:	± 0.2 dB(30 MHz to 6 GHz) for EX3DV4 ± 0.2 dB(30 MHz to 4 GHz) for ES3DV3
Dynamic Range:	10 mW/kg — 100W/kg
Probe Length:	330 mm
Probe Tip	
Length:	20 mm
Body Diameter:	12 mm
Tip Diameter:	2.5 mm (3.9 mm for ES3DV3)
Tip-Center:	1 mm (2.0mm for ES3DV3)
Application:	SAR Dosimetry Testing Compliance tests of mobile phones Dosimetry in strong gradient fields



Picture C.2 Near-field Probe



Picture C.3 E-field Probe

C.3 E-field Probe Calibration

Each E-Probe/Probe Amplifier combination has unique calibration parameters. A TEM cell calibration procedure is conducted to determine the proper amplifier settings to enter in the probe parameters. The amplifier settings are determined for a given frequency by subjecting the probe to a known E-field density (1 mW/cm²) using an RF Signal generator, TEM cell, and RF Power Meter.

The free space E-field from amplified probe outputs is determined in a test chamber. This calibration can be performed in a TEM cell if the frequency is below 1 GHz and in a waveguide or other methodologies above 1 GHz for free space. For the free space calibration, the probe is placed

in the volumetric center of the cavity and at the proper orientation with the field. The probe is then rotated 360 degrees until the three channels show the maximum reading. The power density readings equates to 1 mW/ cm².

E-field temperature correlation calibration is performed in a flat phantom filled with the appropriate simulated brain tissue. The E-field in the medium correlates with the temperature rise in the dielectric medium. For temperature correlation calibration a RF transparent thermistor-based temperature probe is used in conjunction with the E-field probe.

$$SAR = C \frac{\Delta T}{\Delta t}$$

Where:

Δt = Exposure time (30 seconds),

C = Heat capacity of tissue (brain or muscle),

ΔT = Temperature increase due to RF exposure.

$$SAR = \frac{|E|^2 \cdot \sigma}{\rho}$$

Where:

σ = Simulated tissue conductivity,

ρ = Tissue density (kg/m³).

C.4 Other Test Equipment

C.4.1 Data Acquisition Electronics(DAE)

The data acquisition electronics consist of a highly sensitive electrometer-grade preamplifier with auto-zeroing, a channel and gain-switching multiplexer, a fast 16 bit AD-converter and a command decoder with a control logic unit. Transmission to the measurement server is accomplished through an optical downlink for data and status information, as well as an optical uplink for commands and the clock.

The mechanical probe mounting device includes two different sensor systems for frontal and sideways probe contacts. They are used for mechanical surface detection and probe collision detection.

The input impedance of the DAE is 200 MOhm; the inputs are symmetrical and floating. Common mode rejection is above 80 dB.



PictureC.4: DAE

C.4.2 Robot

The SPEAG DASY system uses the high precision robots (DASY4: RX90XL; DASY5: RX160L) type from Stäubli SA (France). For the 6-axis controller system, the robot controller version from Stäubli is used. The Stäubli robot series have many features that are important for our application:

- High precision (repeatability 0.02mm)
- High reliability (industrial design)
- Low maintenance costs (virtually maintenance free due to direct drive gears; no belt drives)
- Jerk-free straight movements (brushless synchron motors; no stepper motors)
- Low ELF interference (motor control fields shielded via the closed metallic construction shields)



Picture C.6 DASY 5

C.4.3 Measurement Server

The Measurement server is based on a PC/104 CPU board with CPU (dasy4: 166 MHz, Intel Pentium; DASY5: 400 MHz, Intel Celeron), chipdisk (DASY4: 32 MB; DASY5: 128MB), RAM (DASY4: 64 MB, DASY5: 128MB). The necessary circuits for communication with the DAE electronic box, as well as the 16 bit AD converter system for optical detection and digital I/O interface are contained on the DASY I/O board, which is directly connected to the PC/104 bus of the CPU board.

The measurement server performs all real-time data evaluation of field measurements and surface detection, controls robot movements and handles safety operation. The PC operating system cannot interfere with these time critical processes. All connections are supervised by a watchdog, and disconnection of any of the cables to the measurement server will automatically disarm the robot and disable all program-controlled robot movements. Furthermore, the measurement server is equipped with an expansion port which is reserved for future applications. Please note that this expansion port does not have a standardized pinout, and therefore only devices provided by SPEAG can be connected. Devices from any other supplier could seriously damage the measurement server.



Picture C.7 Server for DASY 4



Picture C.8 Server for DASY 5

C.4.4 Device Holder for Phantom

The SAR in the phantom is approximately inversely proportional to the square of the distance between the source and the liquid surface. For a source at 5mm distance, a positioning uncertainty of $\pm 0.5\text{mm}$ would produce a SAR uncertainty of $\pm 20\%$. Accurate device positioning is therefore crucial for accurate and repeatable measurements. The positions in which the devices must be measured are defined by the standards.

The DASY device holder is designed to cope with the different positions given in the standard. It has two scales for device rotation (with respect to the body axis) and device inclination (with respect to the line between the ear reference points). The rotation centers for both scales is the ear reference point (ERP). Thus the device needs no repositioning when changing the angles.

The DASY device holder is constructed of low-loss

POM material having the following dielectric

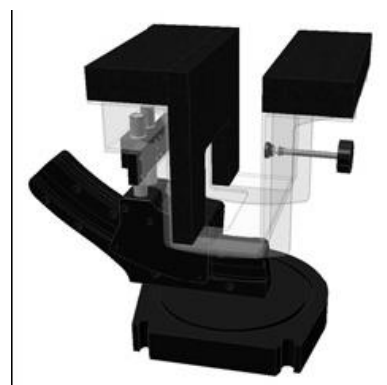
parameters: relative permittivity $\epsilon = 3$ and loss tangent $\delta = 0.02$. The amount of dielectric material has been reduced in the closest vicinity of the device, since measurements have suggested that the influence of the clamp on the test results could thus be lowered.

<Laptop Extension Kit>

The extension is lightweight and made of POM, acrylic glass and foam. It fits easily on the upper part of the Mounting Device in place of the phone positioner. The extension is fully compatible with the Twin-SAM and ELI phantoms.



Picture C.9-1: Device Holder
Kit



Picture C.9-2: Laptop Extension

C.4.5 Phantom

The SAM Twin Phantom V4.0 is constructed of a fiberglass shell integrated in a table. The shape of the shell is based on data from an anatomical study designed to

Represent the 90th percentile of the population. The phantom enables the dissymmetric evaluation of SAR for both left and right handed handset usage, as well as body-worn usage using the flat phantom region. Reference markings on the Phantom allow the complete setup of all predefined phantom positions and measurement grids by manually teaching three points in the robot. The shell phantom has a 2mm shell thickness (except the ear region where shell thickness increases to 6 mm).

Shell Thickness: 2 ± 0.2 mm

Filling Volume: Approx. 25 liters

Dimensions: 810 x 1000 x 500 mm (H x L x W)

Available: Special

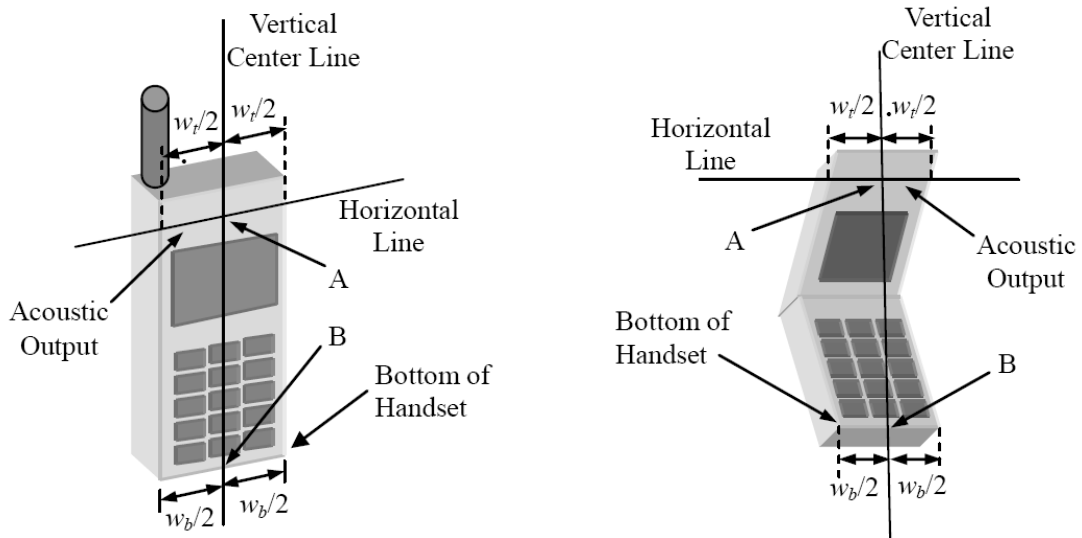


Picture C.10: SAM Twin Phantom

ANNEX D Position of the wireless device in relation to the phantom

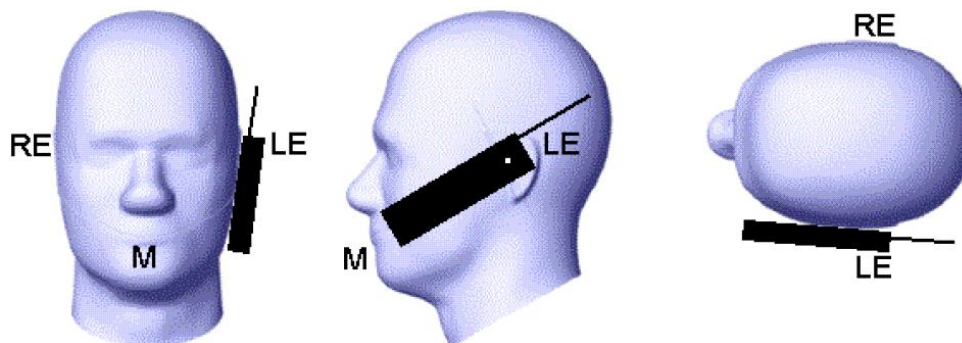
D.1 General considerations

This standard specifies two handset test positions against the head phantom – the “cheek” position and the “tilt” position.

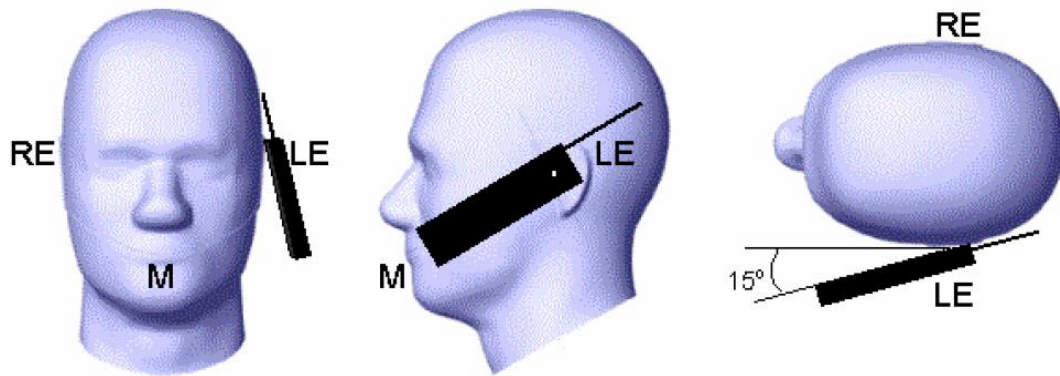


- w_t Width of the handset at the level of the acoustic
- w_b Width of the bottom of the handset
- A Midpoint of the width w_t of the handset at the level of the acoustic output
- B Midpoint of the width w_b of the bottom of the handset

Picture D.1-a Typical “fixed” case handset Picture D.1-b Typical “clam-shell” case handset



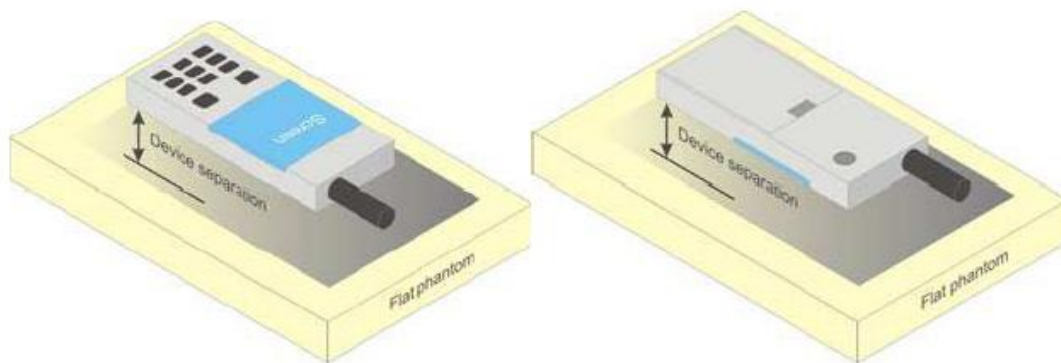
Picture D.2 Cheek position of the wireless device on the left side of SAM



Picture D.3 Tilt position of the wireless device on the left side of SAM

D.2 Body-worn device

A typical example of a body-worn device is a mobile phone, wireless enabled PDA or other battery operated wireless device with the ability to transmit while mounted on a person's body using a carry accessory approved by the wireless device manufacturer.

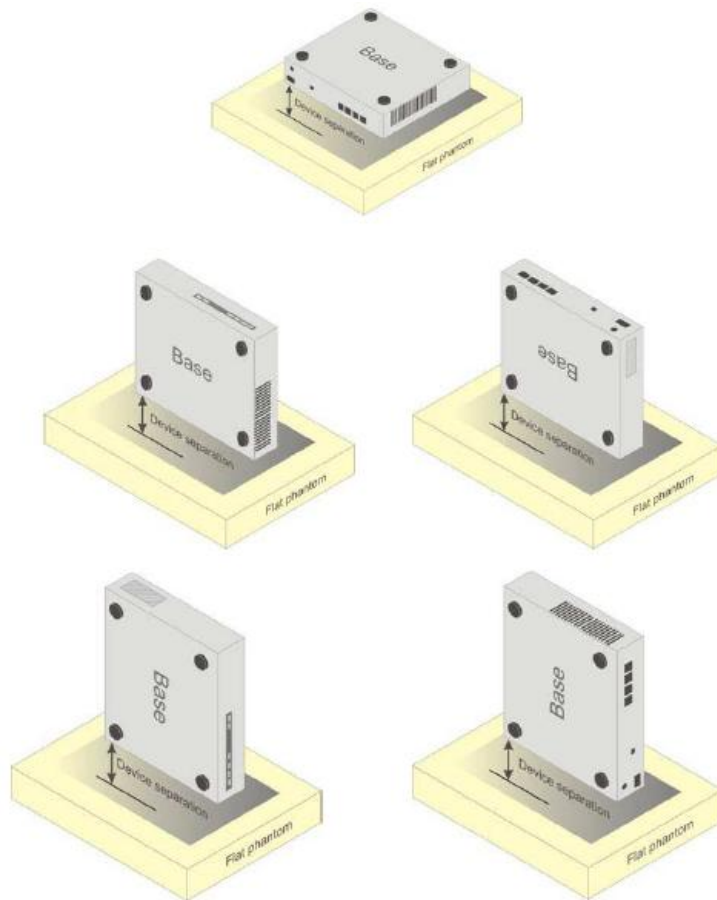


Picture D.4 Test positions for body-worn devices

D.3 Desktop device

A typical example of a desktop device is a wireless enabled desktop computer placed on a table or desk when used.

The DUT shall be positioned at the distance and in the orientation to the phantom that corresponds to the intended use as specified by the manufacturer in the user instructions. For devices that employ an external antenna with variable positions, tests shall be performed for all antenna positions specified. Picture 8.5 show positions for desktop device SAR tests. If the intended use is not specified, the device shall be tested directly against the flat phantom.



Picture D.5 Test positions for desktop devices

D.4 DUT Setup Photos



Picture D.6

ANNEX E Equivalent Media Recipes

The liquid used for the frequency range of 700-3000 MHz consisted of water, sugar, salt, preventol, glycol monobutyl and Cellulose. The liquid has been previously proven to be suited for worst-case. The Table E.1 shows the detail solution. It's satisfying the latest tissue dielectric parameters requirements proposed by the IEEE 1528 and IEC 62209.

Table E.1: Composition of the Tissue Equivalent Matter

Frequency (MHz)	835 Head	835 Body	1900 Head	1900 Body	2450 Head	2450 Body	5800 Head	5800 Body
Ingredients (% by weight)								
Water	41.45	52.5	55.242	69.91	58.79	72.60	65.53	65.53
Sugar	56.0	45.0	\	\	\	\	\	\
Salt	1.45	1.4	0.306	0.13	0.06	0.18	\	\
Preventol	0.1	0.1	\	\	\	\	\	\
Cellulose	1.0	1.0	\	\	\	\	\	\
Glycol Monobutyl	\	\	44.452	29.96	41.15	27.22	\	\
Diethyleneglycol monohexylether	\	\	\	\	\	\	17.24	17.24
Triton X-100	\	\	\	\	\	\	17.24	17.24
Dielectric Parameters Target Value	$\epsilon=41.5$ $\sigma=0.90$	$\epsilon=55.2$ $\sigma=0.97$	$\epsilon=40.0$ $\sigma=1.40$	$\epsilon=53.3$ $\sigma=1.52$	$\epsilon=39.2$ $\sigma=1.80$	$\epsilon=52.7$ $\sigma=1.95$	$\epsilon=35.3$ $\sigma=5.27$	$\epsilon=48.2$ $\sigma=6.00$

Note: There are a little adjustment respectively for 750, 1800, 2600, based on the recipe of closest frequency in table E.1

ANNEX F System Validation

The SAR system must be validated against its performance specifications before it is deployed. When SAR probes, system components or software are changed, upgraded or recalibrated, these must be validated with the SAR system(s) that operates with such components.






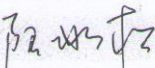
Table F.1: System Validation

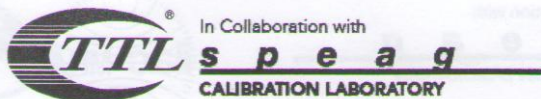
Probe SN.	Liquid name	Validation date	Frequency point	Status (OK or Not)
3617	Head 750MHz	Mar. 27, 2015	750 MHz	OK
3151	Head 850MHz	Apr. 16, 2015	850 MHz	OK
3151	Head 1750MHz	Apr. 16, 2015	1750 MHz	OK
3151	Head 1810MHz	Apr. 16, 2015	1810 MHz	OK
3151	Head 1900MHz	Apr. 16, 2015	1900 MHz	OK
3151	Head 2450MHz	Apr. 16, 2015	2450 MHz	OK
3151	Head 2550MHz	Apr. 16, 2015	2550 MHz	OK



ANNEX G DAE Calibration Certificate

DAE4 SN:786 Calibration Certificate

		In Collaboration with					
		CALIBRATION LABORATORY				CALIBRATION No. L0570	
Add: No.51 Xueyuan Road, Haidian District, Beijing, 100191, China Tel: +86-10-62304633-2079 Fax: +86-10-62304633-2504 E-mail: cttl@chinattl.com Http://www.chinattl.cn							
Client : CTTL(South Branch)				Certificate No: Z14-97158			
CALIBRATION CERTIFICATE							
Object		DAE4 - SN: 786		<div style="border: 1px solid red; padding: 2px;">受控文件</div>			
Calibration Procedure(s)		TMC-OS-E-01-198 Calibration Procedure for the Data Acquisition Electronics (DAEx)					
Calibration date:		November 20, 2014					
<p>This calibration Certificate documents the traceability to national standards, which realize the physical units of measurements(SI). The measurements and the uncertainties with confidence probability are given on the following pages and are part of the certificate.</p> <p>All calibrations have been conducted in the closed laboratory facility: environment temperature(22±3)℃ and humidity<70%.</p> <p>Calibration Equipment used (M&TE critical for calibration)</p>							
Primary Standards	ID #	Cal Date(Calibrated by, Certificate No.)			Scheduled Calibration		
Process Calibrator 753	1971018	01-July-14 (CTTL, No:J14X02147)			July-15		
Calibrated by:	Name	Function		Signature			
	Yu Zongying	SAR Test Engineer					
Reviewed by:	Qi Dianyuan	SAR Project Leader					
Approved by:	Lu Bingsong	Deputy Director of the laboratory					
Issued: November 21, 2014							
This calibration certificate shall not be reproduced except in full without written approval of the laboratory.							



Add: No.51 Xueyuan Road, Haidian District, Beijing, 100191, China
Tel: +86-10-62304633-2079 Fax: +86-10-62304633-2504
E-mail: cttl@chinattl.com Http://www.chinattl.cn

Glossary:

DAE data acquisition electronics
Connector angle information used in DASY system to align probe sensor X to the robot coordinate system.

Methods Applied and Interpretation of Parameters:

- **DC Voltage Measurement:** Calibration Factor assessed for use in DASY system by comparison with a calibrated instrument traceable to national standards. The figure given corresponds to the full scale range of the voltmeter in the respective range.
- **Connector angle:** The angle of the connector is assessed measuring the angle mechanically by a tool inserted. Uncertainty is not required.
- The report provide only calibration results for DAE, it does not contain other performance test results.

Primary Standards	ID #	Cal Date/Calibrated by (Certificate No.)	Scheduled Calibration
Process Calibrator 752	1871018	01-Jul-14 (CTTL No. J14X02417)	Jul-15
Calibrated by:	Yu Zhenyong	SAR Test Engineer	Signature
Reviewed by:	Qi Dianyun	SAR Project Leader	Signature
Approved by:	Lu Bingrong	Deputy Director of the Laboratory	Signature



Add: No.51 Xueyuan Road, Haidian District, Beijing, 100191, China
Tel: +86-10-62304633-2079 Fax: +86-10-62304633-2504
E-mail: cttl@chinattl.com Http://www.chinattl.cn

DC Voltage Measurement

A/D - Converter Resolution nominal

High Range: 1LSB = 6.1 μ V, full range = -100...+300 mV
Low Range: 1LSB = 61nV, full range = -1.....+3mV

DASY measurement parameters: Auto Zero Time: 3 sec; Measuring time: 3 sec

Calibration Factors	X	Y	Z
High Range	405.098 \pm 0.15% (k=2)	404.273 \pm 0.15% (k=2)	403.913 \pm 0.15% (k=2)
Low Range	3.97052 \pm 0.7% (k=2)	3.97053 \pm 0.7% (k=2)	3.9612 \pm 0.7% (k=2)

Connector Angle

Connector Angle to be used in DASY system	318° \pm 1 °
---	----------------

ANNEX H Probe Calibration Certificate

Probe EX3DV4-SN:3617 Calibration Certificate

Calibration Laboratory of
Schmid & Partner
Engineering AG
Zeughausstrasse 43, 8004 Zurich, Switzerland



S Schweizerischer Kalibrierdienst
C Service suisse d'étalonnage
S Servizio svizzero di taratura
Swiss Calibration Service

Accredited by the Swiss Accreditation Service (SAS)
The Swiss Accreditation Service is one of the signatories to the EA
Multilateral Agreement for the recognition of calibration certificates

Accreditation No.: **SCS 108**

Client **CTTL (Auden)**

Certificate No: **EX3-3617_Aug14**

CALIBRATION CERTIFICATE

Object **EX3DV4 - SN:3617**

Calibration procedure(s) **QA CAL-01.v9, QA CAL-14.v4, QA CAL-23.v5, QA CAL-25.v6**
Calibration procedure for dosimetric E-field probes

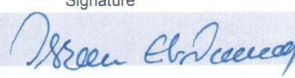

Calibration date: **August 28, 2014**

This calibration certificate documents the traceability to national standards, which realize the physical units of measurements (SI).
The measurements and the uncertainties with confidence probability are given on the following pages and are part of the certificate.

All calibrations have been conducted in the closed laboratory facility: environment temperature $(22 \pm 3)^\circ\text{C}$ and humidity $< 70\%$.

Calibration Equipment used (M&TE critical for calibration)

Primary Standards	ID	Cal Date (Certificate No.)	Scheduled Calibration
Power meter E4419B	GB41293874	03-Apr-14 (No. 217-01911)	Apr-15
Power sensor E4412A	MY41498087	03-Apr-14 (No. 217-01911)	Apr-15
Reference 3 dB Attenuator	SN: S5054 (3c)	03-Apr-14 (No. 217-01915)	Apr-15
Reference 20 dB Attenuator	SN: S5277 (20x)	03-Apr-14 (No. 217-01919)	Apr-15
Reference 30 dB Attenuator	SN: S5129 (30b)	03-Apr-14 (No. 217-01920)	Apr-15
Reference Probe ES3DV2	SN: 3013	30-Dec-13 (No. ES3-3013_Dec13)	Dec-14
DAE4	SN: 660	13-Dec-13 (No. DAE4-660_Dec13)	Dec-14
Secondary Standards	ID	Check Date (in house)	Scheduled Check
RF generator HP 8648C	US3642U01700	4-Aug-99 (in house check Apr-13)	In house check: Apr-16
Network Analyzer HP 8753E	US37390585	18-Oct-01 (in house check Oct-13)	In house check: Oct-14

	Name	Function	Signature
Calibrated by:	Israe El-Naouq	Laboratory Technician	
Approved by:	Katja Pokovic	Technical Manager	
			Issued: August 28, 2014
This calibration certificate shall not be reproduced except in full without written approval of the laboratory.			

Calibration Laboratory of
Schmid & Partner
Engineering AG
Zeughausstrasse 43, 8004 Zurich, Switzerland



S Schweizerischer Kalibrierdienst
C Service suisse d'étalonnage
S Servizio svizzero di taratura
Swiss Calibration Service

Accredited by the Swiss Accreditation Service (SAS)
The Swiss Accreditation Service is one of the signatories to the EA
Multilateral Agreement for the recognition of calibration certificates

Accreditation No.: **SCS 108**

Glossary:

TSL	tissue simulating liquid
NORM _{x,y,z}	sensitivity in free space
ConvF	sensitivity in TSL / NORM _{x,y,z}
DCP	diode compression point
CF	crest factor (1/duty_cycle) of the RF signal
A, B, C, D	modulation dependent linearization parameters
Polarization φ	φ rotation around probe axis
Polarization ϑ	ϑ rotation around an axis that is in the plane normal to probe axis (at measurement center), i.e., $\vartheta = 0$ is normal to probe axis
Connector Angle	information used in DASY system to align probe sensor X to the robot coordinate system

Calibration is Performed According to the Following Standards:

- IEEE Std 1528-2013, "IEEE Recommended Practice for Determining the Peak Spatial-Averaged Specific Absorption Rate (SAR) in the Human Head from Wireless Communications Devices: Measurement Techniques", June 2013
- IEC 62209-1, "Procedure to measure the Specific Absorption Rate (SAR) for hand-held devices used in close proximity to the ear (frequency range of 300 MHz to 3 GHz)", February 2005

Methods Applied and Interpretation of Parameters:

- NORM_{x,y,z}**: Assessed for E-field polarization $\vartheta = 0$ ($f \leq 900$ MHz in TEM-cell; $f > 1800$ MHz: R22 waveguide). NORM_{x,y,z} are only intermediate values, i.e., the uncertainties of NORM_{x,y,z} does not affect the E^2 -field uncertainty inside TSL (see below ConvF).
- NORM(f)_{x,y,z}** = NORM_{x,y,z} * frequency_response (see Frequency Response Chart). This linearization is implemented in DASY4 software versions later than 4.2. The uncertainty of the frequency response is included in the stated uncertainty of ConvF.
- DCP_{x,y,z}**: DCP are numerical linearization parameters assessed based on the data of power sweep with CW signal (no uncertainty required). DCP does not depend on frequency nor media.
- PAR**: PAR is the Peak to Average Ratio that is not calibrated but determined based on the signal characteristics
- A_{x,y,z}; B_{x,y,z}; C_{x,y,z}; D_{x,y,z}; VR_{x,y,z}**: A, B, C, D are numerical linearization parameters assessed based on the data of power sweep for specific modulation signal. The parameters do not depend on frequency nor media. VR is the maximum calibration range expressed in RMS voltage across the diode.
- ConvF and Boundary Effect Parameters**: Assessed in flat phantom using E-field (or Temperature Transfer Standard for $f \leq 800$ MHz) and inside waveguide using analytical field distributions based on power measurements for $f > 800$ MHz. The same setups are used for assessment of the parameters applied for boundary compensation (alpha, depth) of which typical uncertainty values are given. These parameters are used in DASY4 software to improve probe accuracy close to the boundary. The sensitivity in TSL corresponds to NORM_{x,y,z} * ConvF whereby the uncertainty corresponds to that given for ConvF. A frequency dependent ConvF is used in DASY version 4.4 and higher which allows extending the validity from ± 50 MHz to ± 100 MHz.
- Spherical isotropy (3D deviation from isotropy)**: in a field of low gradients realized using a flat phantom exposed by a patch antenna.
- Sensor Offset**: The sensor offset corresponds to the offset of virtual measurement center from the probe tip (on probe axis). No tolerance required.
- Connector Angle**: The angle is assessed using the information gained by determining the NORM_x (no uncertainty required).



EX3DV4 – SN:3617

August 28, 2014

Probe EX3DV4

SN:3617

Manufactured: May 3, 2007
Calibrated: August 28, 2014

Calibrated for DASY/EASY Systems
(Note: non-compatible with DASY2 system!)

EX3DV4– SN:3617

August 28, 2014

DASY/EASY - Parameters of Probe: EX3DV4 - SN:3617

Basic Calibration Parameters

	Sensor X	Sensor Y	Sensor Z	Unc (k=2)
Norm ($\mu\text{V}/(\text{V}/\text{m})^2$) ^A	0.35	0.22	0.33	± 10.1 %
DCP (mV) ^B	100.8	94.7	99.1	

Modulation Calibration Parameters

UID	Communication System Name		A dB	B dB $\sqrt{\mu\text{V}}$	C	D dB	VR mV	Unc ^E (k=2)
0	CW	X	0.0	0.0	1.0	0.00	133.3	±3.5 %
		Y	0.0	0.0	1.0		128.8	
		Z	0.0	0.0	1.0		136.3	

The reported uncertainty of measurement is stated as the standard uncertainty of measurement multiplied by the coverage factor k=2, which for a normal distribution corresponds to a coverage probability of approximately 95%.

^A The uncertainties of NormX,Y,Z do not affect the E²-field uncertainty inside TSL (see Pages 5 and 6).

^B Numerical linearization parameter: uncertainty not required.

^E Uncertainty is determined using the max. deviation from linear response applying rectangular distribution and is expressed for the square of the field value.

EX3DV4- SN:3617

August 28, 2014

DASY/EASY - Parameters of Probe: EX3DV4 - SN:3617

Calibration Parameter Determined in Head Tissue Simulating Media

f (MHz) ^C	Relative Permittivity ^F	Conductivity (S/m) ^F	ConvF X	ConvF Y	ConvF Z	Alpha ^G	Depth ^G (mm)	Unct. (k=2)
750	41.9	0.89	10.02	10.02	10.02	0.69	0.64	± 12.0 %
835	41.5	0.90	9.67	9.67	9.67	0.67	0.63	± 12.0 %
900	41.5	0.97	9.51	9.51	9.51	0.14	1.86	± 12.0 %
1450	40.5	1.20	8.97	8.97	8.97	0.35	0.94	± 12.0 %
1640	40.3	1.29	8.64	8.64	8.64	0.56	0.77	± 12.0 %
1750	40.1	1.37	8.34	8.34	8.34	0.57	0.74	± 12.0 %
1810	40.0	1.40	8.00	8.00	8.00	0.33	0.97	± 12.0 %
1900	40.0	1.40	7.90	7.90	7.90	0.68	0.63	± 12.0 %
2000	40.0	1.40	7.81	7.81	7.81	0.51	0.71	± 12.0 %
2100	39.8	1.49	7.94	7.94	7.94	0.76	0.54	± 12.0 %
2300	39.5	1.67	7.60	7.60	7.60	0.50	0.70	± 12.0 %
2450	39.2	1.80	7.19	7.19	7.19	0.31	0.99	± 12.0 %
2600	39.0	1.96	7.05	7.05	7.05	0.36	0.92	± 12.0 %
3500	37.9	2.91	7.29	7.29	7.29	0.43	0.95	± 13.1 %
3700	37.7	3.12	6.90	6.90	6.90	0.48	0.89	± 13.1 %
5200	36.0	4.66	5.46	5.46	5.46	0.35	1.80	± 13.1 %
5300	35.9	4.76	5.26	5.26	5.26	0.35	1.80	± 13.1 %
5500	35.6	4.96	5.00	5.00	5.00	0.40	1.80	± 13.1 %
5600	35.5	5.07	4.90	4.90	4.90	0.40	1.80	± 13.1 %
5800	35.3	5.27	4.76	4.76	4.76	0.40	1.80	± 13.1 %

^C Frequency validity above 300 MHz of ± 100 MHz only applies for DASY v4.4 and higher (see Page 2), else it is restricted to ± 50 MHz. The uncertainty is the RSS of the ConvF uncertainty at calibration frequency and the uncertainty for the indicated frequency band. Frequency validity below 300 MHz is ± 10, 25, 40, 50 and 70 MHz for ConvF assessments at 30, 64, 128, 150 and 220 MHz respectively. Above 5 GHz frequency validity can be extended to ± 110 MHz.

^F At frequencies below 3 GHz, the validity of tissue parameters (ϵ and σ) can be relaxed to ± 10% if liquid compensation formula is applied to measured SAR values. At frequencies above 3 GHz, the validity of tissue parameters (ϵ and σ) is restricted to ± 5%. The uncertainty is the RSS of the ConvF uncertainty for indicated target tissue parameters.

^G Alpha/Depth are determined during calibration. SPEAG warrants that the remaining deviation due to the boundary effect after compensation is always less than ± 1% for frequencies below 3 GHz and below ± 2% for frequencies between 3-6 GHz at any distance larger than half the probe tip diameter from the boundary.

EX3DV4- SN:3617

August 28, 2014

DASY/EASY - Parameters of Probe: EX3DV4 - SN:3617

Calibration Parameter Determined in Body Tissue Simulating Media

f (MHz) ^C	Relative Permittivity ^F	Conductivity (S/m) ^F	ConvF X	ConvF Y	ConvF Z	Alpha ^G	Depth (mm) ^G	Unct. (k=2)
750	55.5	0.96	9.53	9.53	9.53	0.70	0.66	± 12.0 %
835	55.2	0.97	9.48	9.48	9.48	0.80	0.57	± 12.0 %
900	55.0	1.05	9.27	9.27	9.27	0.43	0.80	± 12.0 %
1450	54.0	1.30	8.18	8.18	8.18	0.20	1.36	± 12.0 %
1640	53.8	1.40	8.27	8.27	8.27	0.48	0.74	± 12.0 %
1750	53.4	1.49	7.81	7.81	7.81	0.50	0.75	± 12.0 %
1810	53.3	1.52	7.68	7.68	7.68	0.42	0.80	± 12.0 %
1900	53.3	1.52	7.58	7.58	7.58	0.41	0.80	± 12.0 %
2000	53.3	1.52	7.76	7.76	7.76	0.38	0.81	± 12.0 %
2100	53.2	1.62	7.87	7.87	7.87	0.28	0.97	± 12.0 %
2300	52.9	1.81	7.58	7.58	7.58	0.68	0.62	± 12.0 %
2450	52.7	1.95	7.31	7.31	7.31	0.76	0.56	± 12.0 %
2600	52.5	2.16	7.22	7.22	7.22	0.80	0.50	± 12.0 %
3500	51.3	3.31	6.52	6.52	6.52	0.53	0.90	± 13.1 %
3700	51.0	3.55	6.64	6.64	6.64	0.32	1.33	± 13.1 %
5200	49.0	5.30	4.90	4.90	4.90	0.40	1.90	± 13.1 %
5300	48.9	5.42	4.69	4.69	4.69	0.40	1.90	± 13.1 %
5500	48.6	5.65	4.28	4.28	4.28	0.50	1.90	± 13.1 %
5600	48.5	5.77	4.21	4.21	4.21	0.50	1.90	± 13.1 %
5800	48.2	6.00	4.35	4.35	4.35	0.50	1.90	± 13.1 %

^C Frequency validity above 300 MHz of ± 100 MHz only applies for DASY v4.4 and higher (see Page 2), else it is restricted to ± 50 MHz. The uncertainty is the RSS of the ConvF uncertainty at calibration frequency and the uncertainty for the indicated frequency band. Frequency validity below 300 MHz is ± 10, 25, 40, 50 and 70 MHz for ConvF assessments at 30, 64, 128, 150 and 220 MHz respectively. Above 5 GHz frequency validity can be extended to ± 110 MHz.

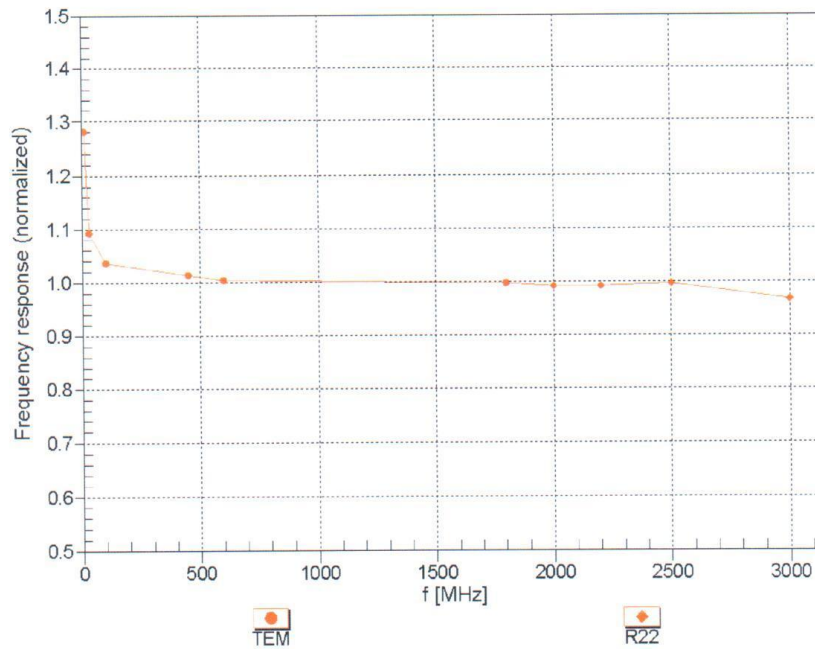
^F At frequencies below 3 GHz, the validity of tissue parameters (ϵ and σ) can be relaxed to ± 10% if liquid compensation formula is applied to measured SAR values. At frequencies above 3 GHz, the validity of tissue parameters (ϵ and σ) is restricted to ± 5%. The uncertainty is the RSS of the ConvF uncertainty for indicated target tissue parameters.

^G Alpha/Depth are determined during calibration. SPEAG warrants that the remaining deviation due to the boundary effect after compensation is always less than ± 1% for frequencies below 3 GHz and below ± 2% for frequencies between 3-6 GHz at any distance larger than half the probe tip diameter from the boundary.

EX3DV4— SN:3617

August 28, 2014

Frequency Response of E-Field (TEM-Cell:ifi110 EXX, Waveguide: R22)



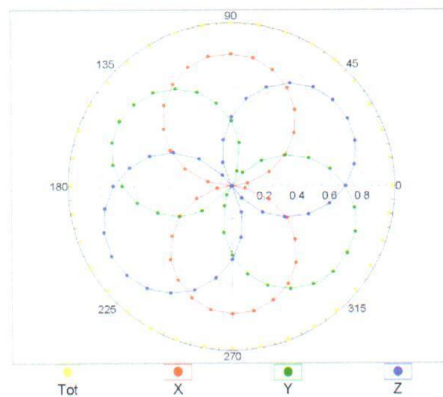
Uncertainty of Frequency Response of E-field: $\pm 6.3\%$ ($k=2$)

EX3DV4- SN:3617

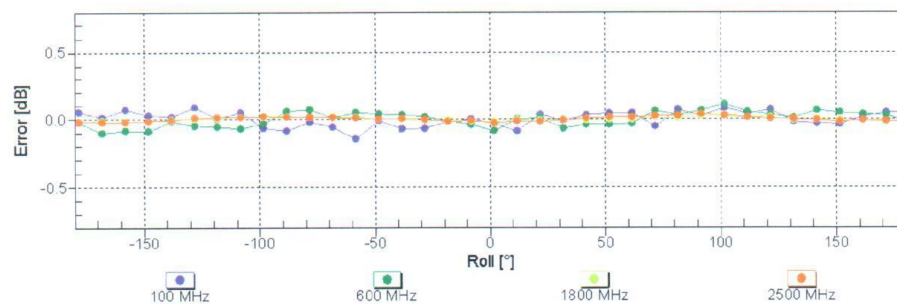
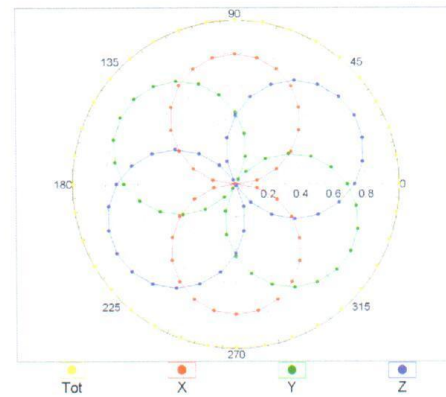
August 28, 2014

Receiving Pattern (ϕ), $\theta = 0^\circ$

f=600 MHz,TEM



f=1800 MHz,R22

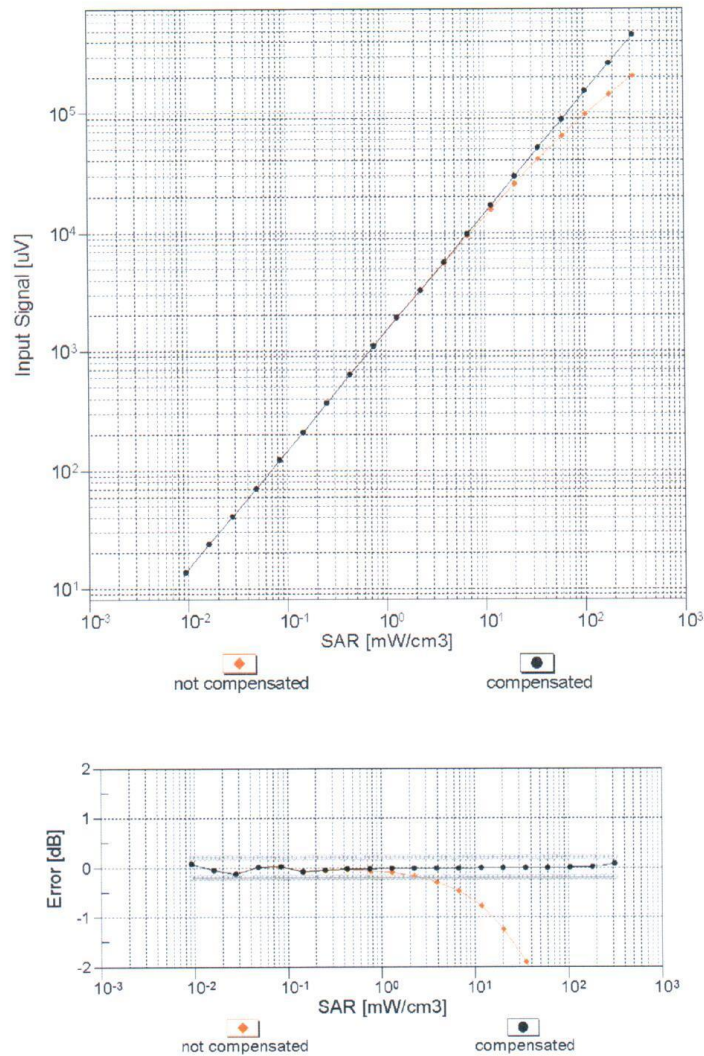


Uncertainty of Axial Isotropy Assessment: $\pm 0.5\%$ ($k=2$)

EX3DV4- SN:3617

August 28, 2014

Dynamic Range $f(SAR_{head})$ (TEM cell , $f_{eval}= 1900$ MHz)



Uncertainty of Linearity Assessment: $\pm 0.6\%$ ($k=2$)