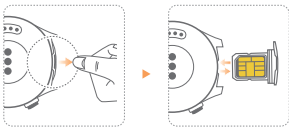
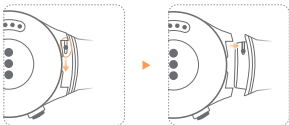


Inserting a nano-SIM card

1. Rotate the mounting ears and remove the strap.
2. Use your fingernails or a flat tool, such as a plastic card, to pop open the nano-SIM card tray.
3. Place a nano-SIM card into the card tray in the proper direction.
4. Insert the tray back in the same orientation that you removed it, and slide the strap back in.



Note:

- Insert the card tray completely and keep the rubber ring dry and clean.
- Your watch supports standard nano-SIM cards only. Please contact your carrier for a standard nano-SIM card.
- Use a standard nano-SIM card to prevent the card tray of your watch being damaged.
- Insert the nano-SIM card in the correct direction and keep the card tray level.

