

# **Thank you for purchasing the HW-02G. This HW-02G brings you a high speed wireless network connection.**

This document will help you understand your HW-02G so you can start using it right away. Please read this document carefully before using your HW-02G.

For detailed instructions for logging in to the web management page, refer to "Logging In to the Web Management Page" on page 14.

## **Getting to Know Your HW-02G**

### **Note:**

The HW-02G function descriptions and illustrations in this document are for your reference only. The product you have purchased may vary.

### **Application Scenarios**

Wi-Fi devices (such as smartphones, tablet computers, and game consoles) or computers can all access the Internet through HW-02G. The specific connection procedure depends on the operating system of the Wi-Fi device or computer. Establish a connection according to your device's specific instructions.

To access the Internet through a USB port connection, install the driver according to the instructions.

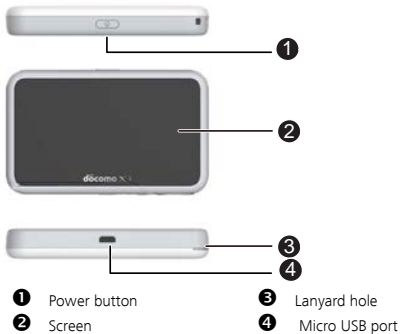
**Scenario 1: Connecting multiple devices through Wi-Fi**



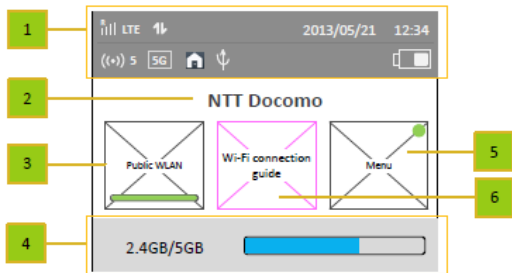
**Scenario 2: Connecting multiple devices through Wi-Fi and USB simultaneously**



## Appearance



## Screen



## ① Status bar

## ② Character zone

- When connect to GSM/3G/LTE network, show the operator name
- When connect to public Wi-Fi hotspot, show the SSID name of the hotspot
- When SIM card is not normal, show "PIN1 code required"/"PIN unlock code required";

## ③ Public WLAN

User can tap on to turn on or turn off Wi-Fi.

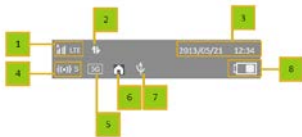
## ④ Data usage information

If user set the data information, show used data and total data. If user turn off the display of data on Home screen, hide this zone.


## ⑤ Menu

Tap on to view more functions. If user turn on Auto-check for updates and there is new available update, show an colored image on the right-up of the button.

## ⑥ Wi-Fi connection guide



## ❶ Signal strength

- R: when in roaming status; Show network mode, including "3G/LTE".
- : when connecting to public Wi-Fi hotspot.

## ❷ Icon of traffic.

Show the icon when connect to network. When there is upload and download data the icon changes color. When disconnect from network, hide the icon.

## ❸ Time information

## ❹ Wi-Fi

- Wi-Fi turned on.
- Number of connected Wi-Fi devices.

## ⑤ Wi-Fi Mode


## ⑥ DFS

When HW-02G is during DFS checking progress, the DFS icon show and flashes. When HW-02G connect to the 5G\_W52/W53 network that can be only used indoor only, show this icon. Otherwise hide the icon.

## ⑦ USB

Show it when connected to USB cable and HW-02G supports Charging with standard functions process. If connected to USB cable only for charging, hide this icon.

## ⑧ Battery

: Battery level from low to high.

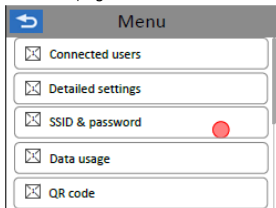


## SSID and Wireless Network Encryption Key

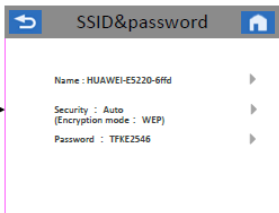
When a Wi-Fi device establishes a connection to the HW-02G for the first time, you may need to enter the default Service Set Identifier (SSID) and wireless network encryption key. These are printed on the HW-02G.

To view the current SSID and wireless network encryption key on the screen:

1. Press the **About > SSID&password** on the homepage.



2. The SSID and Password display on the screen.



## Getting Started

### Installing a SIM Card

**Caution:**

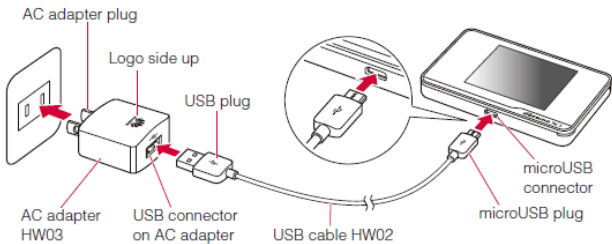
Use a standard miniUIM card compatible with the HW-02G, otherwise you will damage your HW-02G.

### Charging the Battery

If the battery has not been used for an extended period of time, recharge it before use.

**Note:**


- Only use chargers compatible with the HW-02G and provided by a designated manufacturer. Use of an incompatible charger or one from an unknown manufacturer may cause the HW-02G to malfunction, fail, or could even cause a fire. Such use voids all warranties, whether expressed or implied, on the product.
- The HW-02G's charger model is HW-050100XYW. X and Y represent letters or numbers that vary by region. For details about the specific charger model, contact an authorized dealer.



## Connecting to the Internet via Wi-Fi

The HW-02G's management parameters have been preset according to your operator's requirements. You can quickly connect to the Internet by following these steps:

### Step 1: Turn on the HW-02G

Press and hold the  button until the screen lights up, indicating that the HW-02G is turned on.

#### Note:

Press and hold the  button to turn off the HW-02G.

### Step 2. Establish a Wi-Fi connection (using a computer running the Windows XP operating system as an example)

1. Ensure that the HW-02G's Wi-Fi function is on.
2. Select **Start > Control Panel > Network Connections > Wireless Network Connection**.

#### Note:

Before establishing a Wi-Fi connection, ensure that the computer is equipped with a wireless network adapter. If the computer indicates a wireless network connection, the wireless network adapter can be used. Otherwise, verify that your wireless network adapter is working properly.

3. Click **View available wireless networks** to view a list of available wireless networks.
4. Select the wireless network connection with the HW-02G's SSID and click **Connect**.

**Note:**

- If the wireless network connection is encrypted, enter the correct wireless network encryption key.
  - Press the WPS button twice to view the current SSID and wireless network encryption key on the screen.
5. Wait a moment for the wireless network connection icon to appear in the system tray in the lower right corner of the computer screen. The wireless network connection is then established.

### **Step 3: Connect to the Internet**

If data is transmitted, the HW-02G will automatically connect to the Internet. If data is not

transmitted for a period of time, the HW-02G will automatically disconnect from the network connection.

## Logging In to the Web Management Page

1. Make sure the connection between the HW-02G and the Wi-Fi device or computer is working normally.
2. Open the browser, and enter **http://hw-02g.com** in the address box.
3. Enter the password to log in to the web management page.

### Note:

The default password is **admin**.

## Daily Use

### Battery Saving Mode

If the HW-02G has been inactive for some time, the HW-02G enters the standby mode, in which the display screen turns off. Pressing any button causes the display screen to light up.

When the HW-02G is being powered only by the battery, you can choose to enable or disable the automatic Wi-Fi turnoff function. If this function is enabled and if no Wi-Fi devices access the HW-02G for a period of time, the Wi-Fi turns off automatically. You can press any button to turn the Wi-Fi on again.

### Verifying the PIN

If the PIN verification function is enabled, log in to the web management page and enter the correct PIN according to the instructions. PIN/PUK codes are supplied by your operator along with the SIM card. For details, please consult your operator.

## Restoring to Factory Settings

If you forget some configuration parameters, you can restore the HW-02G to its factory settings and then configure the HW-02G again.

Press and hold the **RESET** button until the display screen turns off. The HW-02G is then restored to its factory settings.

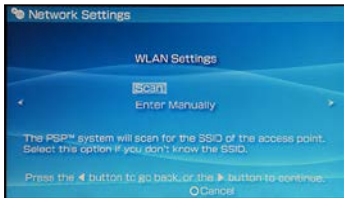
### **Note:**

After you carry out this operation, the HW-02G's personal configuration parameters will all be deleted. All configurations on the web management page will be restored to the factory settings.



## Example 1: Connecting to a Game Console (for example, PSP) through Wi-Fi

1. On the PSP, turn on the WLAN.
2. Choose **Settings** > **Network Settings**.
3. Select **Infrastructure Mode**.
4. Select **New Connection**, and enter the connection name.
5. Select **Scan** to search for wireless networks. A list of access points will be displayed on the screen.
6. Select the access point with the HW-02G's SSID, and press the **▶** button on the PSP. Confirm the SSID, and enter the correct wireless network encryption key.
7. Press the **▶** button to proceed to the next step, and then press the **X** button to



save settings.

8. Select **Test Connection** to test whether the network connection is successful.
9. You can now open the browser and access the network.



## Example 2: Connecting to a Tablet Computer (for example, iPad) through Wi-Fi

1. Touch **Settings** > **WLAN** to turn on WLAN.
2. The tablet computer automatically searches for wireless connections and displays a list of access points.
3. Select the access point with the HW-02G's SSID.
4. If required, enter the correct wireless network encryption key, and tap **Join**.  
(The lock icon indicates that the encryption key is required to connect to this wireless network.)

### Note:

Wi-Fi devices, such as an iPhone, iPod touch, PS3 and NDSi, can all access the Internet through the HW-02G. For specific operations, refer to the Wi-Fi device's user manual.



## Tips

When the HW-02G is in use for an extended period of time, it will become warm and may overheat. Should this happen, the HW-02G will automatically close the network connection and turn off to protect itself from damage. If this occurs, place the HW-02G in a well ventilated space to allow the heat to dissipate, then turn it on and continue to use it as normal.

If you are unable to use the HW-02G as normal, try the following:

- Consult the user manual on the web management page.
- Restart the HW-02G.
- Restore the HW-02G to the factory settings.
- Consult your operator.



is a trademark of ETSI.