



Accredited testing laboratory

CNAS Registration number: L0310

Report On SAR Test of HUAWEI GPRS/GSM Mobile Phone with Bluetooth M/N: HUAWEI G6150

Test report no. : SYBH(Z-SAR)004092010EB
Type identification: HUAWEI G6150
FCC ID : QISG6150
Test specification : IEEE 1528-2003
: ANSI C95.1-1999
: RSS-102 issue 4 (2010)
: OET Bulletin 65 Supplement C

Table of Contents

1	General Information	3
1.1	Notes	3
1.1.1	Statement of Compliance	3
1.2	Testing laboratory.....	4
1.3	Applicant and Manufacturer	4
1.4	Application details	4
1.5	Test item	5
1.5.1	EUT Description	5
1.6	Test specification(s).....	6
1.6.1	RF exposure limits	6
1.7	Operating conditions during test	7
1.7.1	General description of test procedures.....	7
1.7.2	GSM/GPRS Test Configurations	7
2	Technical test.....	8
2.1	Summary of test results.....	8
2.2	Test environment.....	8
2.3	Measurement and test set-up.....	8
2.4	Measurement system	9
2.4.1	System Description.....	9
2.4.2	Test environment	10
2.4.3	Probe description	10
2.4.4	Phantom description.....	11
2.4.5	Device holder description	11
2.4.6	Scanning procedure	12
2.4.7	Spatial Peak SAR Evaluation	13
2.4.8	Data Storage and Evaluation	14
2.4.9	Test equipment utilized	16
2.4.10	Tissue simulating liquids: dielectric properties	17
2.4.11	Tissue simulating liquids: parameters.....	18
2.4.12	Measurement uncertainty evaluation for SAR test.....	19
2.4.13	Measurement uncertainty evaluation for system validation.....	20
2.4.14	System validation.....	21
2.4.15	Validation procedure.....	21
2.5	Test Results	22
2.5.1	Conducted power measurements.....	22
2.5.2	Multiple Transmitter Information	24
2.5.3	Test results (Head and Body SAR)	25
2.5.4	Extrapolated SAR Values	27
Annex 1	System performance verification	28
Annex 2	Measurement results (printout from DASY TM)	32
Annex 2.1	PCS 1900 MHz head.....	32
Annex 2.2	PCS 1900 MHz body.....	38
Annex 2.3	GSM 850 MHz head	47
Annex 2.4	GSM 850 MHz body	53
Annex 2.5	Z-axis scans.....	66
Annex 3	Calibration parameters	66
Annex 4	Photo documentation.....	66
Annex 4.1	Test Facility	66
Annex 4.2	Test Positions.....	66
Annex 4.3	Liquid depth	66

1 General Information

1.1 Notes

The test results of this test report relate exclusively to the test item specified in 1.5. The HUAWEI does not assume responsibility for any conclusions and generalisations drawn from the test results with regard to other specimens or samples of the type of the equipment represented by the test item. The test report may only be reproduced or published in full. Reproduction or publication of extracts from the report requires the prior written approval of HUAWEI.

1.1.1 Statement of Compliance

The SAR values found for the HUAWEI G6150 are below the maximum recommended levels of 1.6 W/Kg as averaged over any 1 g tissue according to the FCC rule §2.1093, the ANSI/IEEE C 95.1:1999, the NCRP Report Number 86 for uncontrolled environment, according to the Health Canada's Safety Code 6 and the Industry Canada Radio Standards Specification RSS-102 for General Population/Uncontrolled exposure.

For body worn operation, this device has been tested and meets FCC RF exposure guidelines when used with any accessory that contains no metal and that positions the handset a minimum of 15 mm from the body. Use of other accessories may not ensure compliance with FCC RF exposure guidelines.

The measurement together with the test system set-up is described in chapter 2.3 of this test report. A detailed description of the equipment under test can be found in chapter 1.5.

Test engineer:

2010-09-29

Luo Yusheng



Date

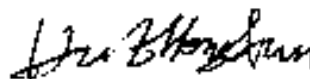
Name

Signature

Reviewed by:

2010-09-29

Hu Zhongxun



Date

Name

Signature

Approved by:

2010-09-29

Liu Chunlin



Date

Name

Signature

1.2 Testing laboratory

Huawei Technologies Co.,Ltd.
Street: Bantian, Longgang District, Shenzhen
Country: P.R.China

Telephone: +86-755-28785278
Fax: +86-755-36834474

E-mail: huzhongxun@huawei.com
Internet: www.huawei.com

State of accreditation: The Test laboratory (area of testing) is accredited according to
ISO/IEC 17025.
CNAS Registration number: L0310

1.3 Applicant and Manufacturer

Name: HUAWEI TECHNOLOGIES CO., LTD

Street: Huawei Base, Bantian, Longgang District
Town: Shenzhen
Country: P.R.China

Contact: Wang Peng
Telephone: 0755-28780808

1.4 Application details

Date of receipt of application:	2010-09-19
Date of receipt of test item:	2010-09-19
Start/Date of test:	2010-09-20
End of test:	2010-09-28

1.5 Test item

Device Information :			
DUT Name:	GPRS/GSM Mobile Phone		
Type Identification:	HUAWEI G6150		
FCC ID :	QISG6150		
Serial Number:	5ZA2C11082000155		
IMEI No:	353916040004921		
Device Type :	portable device		
Exposure Category:	uncontrolled environment / general population		
Test device Production Information	production unit		
Device Operating Configurations:			
Operating Mode(s)	GSM,PCS,BT		
Modulation	GMSK		
Dive Class	B		
GPRS voice mode or DTM	No support		
GPRS Multislot Class (12)	Max Number of Timeslots in Uplink	4	
	Max Number of Timeslots in Downlink	4	
	Max Total Timeslot	5	
Operating Frequency Range(s)	Band	Tx (MHz)	Rx (MHz)
	GSM 850	824.2 ~ 848.8	869.2 ~893.8
	GSM 1900	1850.2 ~1909.8	1930.2 ~1989.8
Power Class :	1, tested with power level 0 (GSM 1900)		
	4, tested with power level 5 (GSM 850)		
Test Channels (low-mid-high) :	512-661-810 (GSM 1900)		
	128-192-251(GSM 850)		
Hardware Version :	Ver. D		
Software Version :	ENG001B105		
Antenna Type :	Integrated antenna		
Accessories/Body-worn Configurations:	Stereo headset		
Battery Options :	Huawei Technologies Co., Ltd Battery Model: HB511 Rated capacity: 1100mAh Nominal Voltage: --- +3.7V Charging Voltage: --- +4.2V S/N: GAGA610XC2402706		
Charger Options :	Huawei Technologies Co., Ltd Model: HS-050040U6 Input Voltage :100-240V ~50/60Hz, 0.2A Output voltage: --- +5.0V , 400mA Rated Power: 2W S/N: BYAA42417925		

1.5.1 EUT Description

Huawei GPRS/GSM Mobile Phone HUAWEI G6150 is subscriber equipment in the GSM/GPRS system. The frequency band is GSM850/900/DCS1800/PCS1900. So only GSM850/ PCS1900 bands test data are included in this report. The Mobile Phone implements such functions as RF signal receiving /Transmitting, GPRS/GSM protocol processing, voice, and MMS service, Bluetooth etc. Externally it provides earphone port (to provide voice service), T-Flash card interface and SIM card interface.

1.6 Test specification(s)

Supplement C (Edition 01-01) to OET Bulletin 65 (Edition 97-01)

IEEE 1528-2003 (April 21, 2003): Recommended Practice for Determining the Peak Spatial-Average Specific Absorption Rate (SAR) in the Human Head from Wireless Communications Devices: Measurement Techniques

RSS-104: Radio Frequency Exposure Compliance of Radiocommunication Apparatus
(All Frequency Bands (Issue 4 of March 2010))

Canada's Safety Code 6: Limits of Human Exposure to Radiofrequency Electromagnetic Fields in the Frequency Range from 3 kHz to 300 GHz (99-EHD-237)

IEEE Std C95.3 – 1991, IEEE Recommended Practice for the Measurement of Potentially Hazardous Electromagnetic Fields – RF and Microwave.

IEEE Std C95.1 – 1999, IEEE Standard for Safety Levels with Respect to Human Exposure to Radio Frequency Electromagnetic Fields, 3 kHz – 300 GHz.

IEC 62209-2:Ed1.0(2010-3) Human exposure to radio frequency fields from hand-held and body-mounted wireless communication devices - Human models, instrumentation, and procedures - Part 2: Procedure to determine the specific absorption rate (SAR) for wireless communication devices used in close proximity to the human body (frequency range of 30 MHz to 6 GHz)

1.6.1 RF exposure limits

Human Exposure	Uncontrolled Environment General Population	Controlled Environment Occupational
Spatial Peak SAR* (Brain)	1.60 mW/g	8.00 mW/g
Spatial Average SAR** (Whole Body)	0.08 mW/g	0.40 mW/g
Spatial Peak SAR*** (Hands/Feet/Ankle/Wrist)	4.00 mW/g	20.00 mW/g

Table1: RF exposure limits

The limit applied in this test report is shown in **bold** letters

Notes:

* The Spatial Peak value of the SAR averaged over any 1 gram of tissue (defined as a tissue volume in the shape of a cube) and over the appropriate averaging time

** The Spatial Average value of the SAR averaged over the whole body.

*** The Spatial Peak value of the SAR averaged over any 10 grams of tissue (defined as a tissue volume in the shape of a cube) and over the appropriate averaging time.

Uncontrolled Environments are defined as locations where there is the exposure of individuals who have no knowledge or control of their exposure.

Controlled Environments are defined as locations where there is exposure that may be incurred by persons who are aware of the potential for exposure, (i.e. as a result of employment or occupation).

1.7 Operating conditions during test

1.7.1 General description of test procedures

The DUT is tested using a CMU200 communications tester as controller unit to set test channels and maximum output power to the DUT, as well as for measuring the conducted peak power.

Test positions as described in the tables above are in accordance with the specified test standard.

Tests in body position are performed with the maximum number of timeslots in uplink.

Tests in head position are performed in voice mode with 1 timeslot unless GPRS function allows parallel voice and data traffic on 2 or more timeslots.

Conducted output power was measured using an integrated RF connector and attached RF cable.

1.7.2 GSM/GPRS Test Configurations

SAR tests for GSM 850 and GSM 1900, a communication link is set up with a base station by air link. Using CMU200 the power lever is set to "5" and "0" in SAR of GSM 850 and GSM 1900. The tests in the band of GSM 850 and GSM 1900 are performed in the mode of GPR function. Since the GPRS class is 12 for this EUT, it has at most 4 timeslots in uplink and at most 4 timeslots in downlink, the maximum total timeslot is 5.

According to specification 3GPP TS 51.010, the maximum power of the GSM can do the power reduction for the multi-slot. The allowed power reduction in the multi-slot configuration is as following:

GSM850	Reduction of maximum output power, (dB)
Number of timeslots in uplink assignment	GPRS (GMSK)
1	0
2	2.5
3	4
4	5

Table2: The allowed power reduction in the multi-slot configuration of GSM850

GSM1900	Reduction of maximum output power, (dB)
Number of timeslots in uplink assignment	GPRS (GMSK)
1	0
2	1
3	3
4	4

Table3: The allowed power reduction in the multi-slot configuration of GSM1900

2 Technical test

2.1 Summary of test results

Band	SAR _{1g} (W/kg)		Test Result
	Head	Body	
GSM 850	0.571	1.030	PASS
GSM 1900	0.187	0.218	

Table4: The Maximum SAR_{1g} Values for Head and Body position

Band		Maximum Average Power (dBm)
GSM 850	GSM	23.56
	GPRS, 4Timeslots	24.53
GSM 1900	GSM	20.54
	GPRS, 4Timeslots	22.62

Table5: The Maximum Power

2.2 Test environment

General Environment conditions in the test area are as follows:

Ambient temperature: 20°C – 24°C
 Tissue simulating liquid: 20°C – 24°C
 Humidity: 30% – 70%

Exact temperature values for each test are shown in the table(s) under 2.5. and/or on the measurement plots.

2.3 Measurement and test set-up

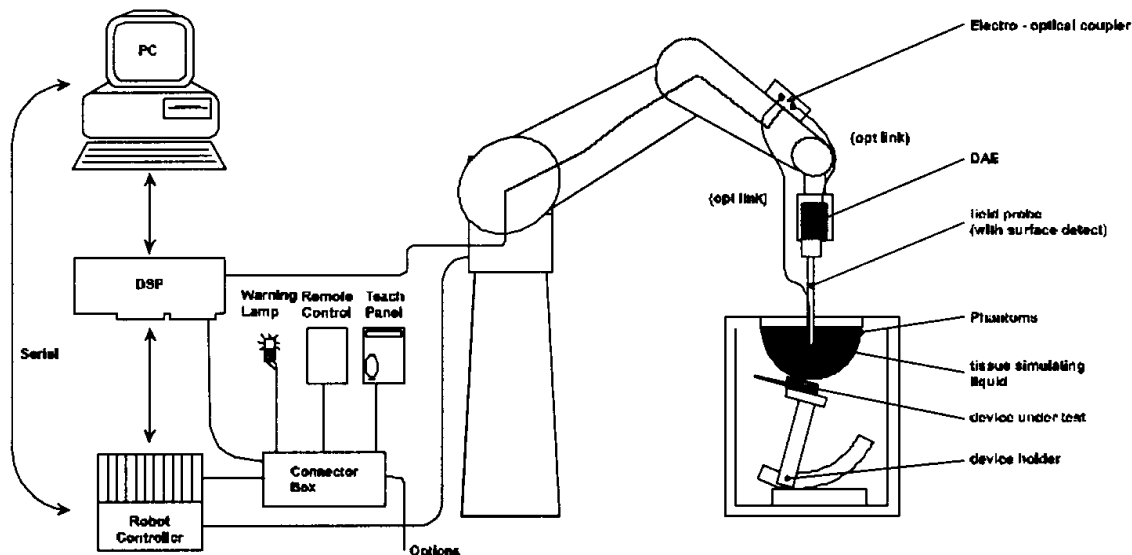
The measurement system is described in chapter 2.4.

The test setup for the system validation can be found in chapter 2.4.14.

A description of positioning and test signal control can be found in chapter 2.5 together with the test results.

2.4 Measurement system

2.4.1 System Description



The DASY5 system for performing compliance tests consists of the following items:

- A standard high precision 6-axis robot (Stäubli RX family) with controller and software. An arm extension for accommodating the data acquisition electronics (DAE).
- A dosimetric probe, i.e. an isotropic E-field probe optimized and calibrated for usage in tissue simulating liquid. The probe is equipped with an optical surface detector system.
- A data acquisition electronic (DAE) which performs the signal amplification, signal multiplexing, AD-conversion, offset measurements, mechanical surface detection, collision detection, etc. The unit is battery powered with standard or rechargeable batteries. The signal is optically transmitted to the EOC.
- A unit to operate the optical surface detector which is connected to the EOC.
- The Electro-Optical Coupler (EOC) performs the conversion from the optical into a digital electric signal of the DAE. The EOC is connected to the DASY5 measurement server.
- The DASY5 measurement server, which performs all real-time data evaluation for field measurements and surface detection, controls robot movements and handles safety operation. A computer operating Windows XP.
- DASY5 software and SEMCAD data evaluation software.
- Remote control with teach panel and additional circuitry for robot safety such as warning lamps, etc.
- The generic twin phantom enabling the testing of left-hand and right-hand usage.
- The device holder for handheld mobile phones.
- Tissue simulating liquid mixed according to the given recipes.
- System validation dipoles allowing to validate the proper functioning of the system.

2.4.2 Test environment

The DASY5 measurement system is placed at the head end of a room with dimensions: 4.5 x 4 x 3 m³, the SAM phantom is placed in a distance of 1.3 m from the side walls and 1.1m from the rear wall.

Picture 1 of the photo documentation shows a complete view of the test environment.

The system allows the measurement of SAR values larger than 0.005 mW/g.

2.4.3 Probe description

Isotropic E-Field Probe EX3DV4 for Dosimetric Measurements

Technical data according to manufacturer information	
Construction	Symmetrical design with triangular core Built-in optical fiber for surface detection system Built-in shielding against static charges PEEK enclosure material (resistant to organic solvents, e.g., glycoether)
Calibration	In air from 10 MHz to 2.5 GHz In head tissue simulating liquid (HSL) at 900 (800-1000) MHz and 1.8 GHz (1700-1910 MHz) (accuracy $\pm 11\%$; k=2) Calibration for other liquids and frequencies upon request
Frequency	10 MHz to 3 GHz (dosimetry); Linearity: ± 0.2 dB (30 MHz to 3 GHz)
Directivity	± 0.2 dB in HSL (rotation around probe axis) ± 0.4 dB in HSL (rotation normal to probe axis)
Dynamic range	5 μ W/g to > 100 mW/g; Linearity: ± 0.2 dB
Optical Surface Detection	± 0.2 mm repeatability in air and clear liquids over diffuse reflecting surfaces (EX3DV4 only)
Dimensions	Overall length: 337 mm Tip length: 9 mm Body diameter: 10 mm Tip diameter: 2.5 mm Distance from probe tip to dipole centers: 1.0 mm
Application	General dosimetry up to 3 GHz Compliance tests of mobile phones Fast automatic scanning in arbitrary phantoms (EX3DV4)

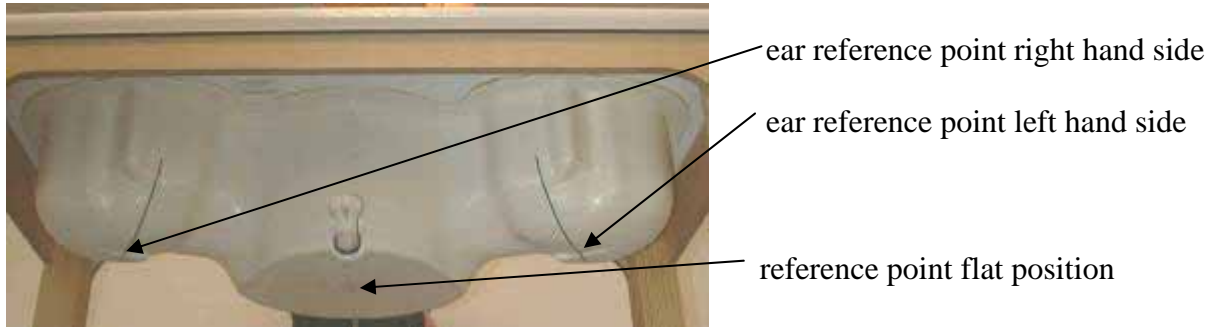
Isotropic E-Field Probe ES3DV3 for Dosimetric Measurements

Technical data according to manufacturer information	
Construction	Symmetrical design with triangular core Interleaved sensors Built-in shielding against static charges PEEK enclosure material (resistant to organic solvents, e.g., DGBE)
Calibration	ISO/IEC 17025 calibration service available.
Frequency	10 MHz to 4 GHz; Linearity: ± 0.2 dB (30 MHz to 4 GHz)
Directivity	± 0.2 dB in HSL (rotation around probe axis) ± 0.3 dB in tissue material (rotation normal to probe axis)
Dynamic range	5 μ W/g to > 100 mW/g; Linearity: ± 0.2 dB
Dimensions	Overall length: 330 mm (Tip: 20 mm) Tip diameter: 3.9 mm (Body: 12 mm) Distance from probe tip to dipole centers: 2.0 mm
Application	General dosimetry up to 4 GHz Dosimetry in strong gradient fields Compliance tests of mobile phones

2.4.4 Phantom description

The used SAM Phantom meets the requirements specified in Edition 01-01 of Supplement C to OET Bulletin 65 for Specific Absorption Rate (SAR) measurements.

The phantom consists of a fibreglass shell integrated in a wooden table. It allows left-hand and right-hand head as well as body-worn measurements with a maximum liquid depth of 18 cm in head position and 22 cm in planar position (body measurements). The thickness of the Phantom shell is 2 mm +/- 0.1 mm.



2.4.5 Device holder description

The DASY5 device holder has two scales for device rotation (with respect to the body axis) and the device inclination (with respect to the line between the ear openings). The plane between the ear openings and the mouth tip has a rotation angle of 65°. The bottom plate contains three pair of bolts for locking the device holder. The device holder positions are adjusted to the standard measurement positions in the three sections. This device holder is used for standard mobile phones or PDA's only. If necessary an additional support of polystyrene material is used.



Larger DUT's (e.g. notebooks) cannot be tested using this device holder. Instead a support of bigger polystyrene cubes and thin polystyrene plates is used to position the DUT in all relevant positions to find and measure spots with maximum SAR values.

Therefore those devices are normally only tested at the flat part of the SAM.

2.4.6 Scanning procedure

The DASY5 installation includes predefined files with recommended procedures for measurements and validation. They are read-only document files and destined as fully defined but unmeasured masks. All test positions (head or body-worn) are tested with the same configuration of test steps differing only in the grid definition for the different test positions.

- The „reference“ and „drift“ measurements are located at the beginning and end of the batch process. They measure the field drift at one single point in the liquid over the complete procedure. The indicated drift is mainly the variation of the DUT's output power and should vary max. +/- 5 %.
- The „surface check“ measurement tests the optical surface detection system of the DASY5 system by repeatedly detecting the surface with the optical and mechanical surface detector and comparing the results. The output gives the detecting heights of both systems, the difference between the two systems and the standard deviation of the detection repeatability. Air bubbles or refraction in the liquid due to separation of the sugar-water mixture gives poor repeatability (above $\pm 0.1\text{mm}$). To prevent wrong results tests are only executed when the liquid is free of air bubbles. The difference between the optical surface detection and the actual surface depends on the probe and is specified with each probe. (It does not depend on the surface reflectivity or the probe angle to the surface within $\pm 30^\circ$.)
- The „area scan“ measures the SAR above the DUT or verification dipole on a parallel plane to the surface. It is used to locate the approximate location of the peak SAR with 2D spline interpolation. The robot performs a stepped movement along one grid axis while the local electrical field strength is measured by the probe. The probe is touching the surface of the SAM during acquisition of measurement values. The standard scan uses large grid spacing for faster measurement. Standard grid spacing for head measurements is 15 mm in x- and y- dimension. If a finer resolution is needed, the grid spacing can be reduced. Grid spacing and orientation have no influence on the SAR result. For special applications where the standard scan method does not find the peak SAR within the grid, e.g. mobile phones with flip cover, the grid can be adapted in orientation. Results of this coarse scan are shown in annex 2.
- A „7x7x7 zoom scan“ measures the field in a volume around the 2D peak SAR value acquired in the previous „coarse“ scan. This is a fine 7x7 grid where the robot additionally moves the probe in 7 steps along the z-axis away from the bottom of the Phantom. Grid spacing for the cube measurement is 5 mm in x and y-direction and 5 mm in z-direction. DASY5 is also able to perform repeated zoom scans if more than 1 peak is found during area scan. In this document, the evaluated peak 1g and 10g averaged SAR values are shown in the 2D-graphics in annex 2. Test results relevant for the specified standard (see chapter 1.6.) are shown in table form in chapter 2.5.
- A Z-axis scan measures the total SAR value at the x-and y-position of the maximum SAR value found during the cube 7x7x7 scan. The probe is moved away in z-direction from the bottom of the SAM phantom in 2mm steps. This measurement shows the continuity of the liquid and can - depending in the field strength – also show the liquid depth. A z-axis scan of the measurement with maximum SAR value is shown in annex 2.

2.4.7 Spatial Peak SAR Evaluation

The spatial peak SAR - value for 1 and 10 g is evaluated after the Cube measurements have been done. The basis of the evaluation are the SAR values measured at the points of the fine cube grid consisting of 7 x 7 x 7 points. The algorithm that finds the maximal averaged volume is separated into three different stages.

- The data between the dipole center of the probe and the surface of the phantom are extrapolated. This data cannot be measured since the center of the dipole is 2.7 mm away from the tip of the probe and the distance between the surface and the lowest measuring point is about 1 mm (see probe calibration sheet). The extrapolated data from a cube measurement can be visualized by selecting 'Graph Evaluated'.
- The maximum interpolated value is searched with a straight-forward algorithm. Around this maximum the SAR - values averaged over the spatial volumes (1g or 10 g) are computed using the 3d-spline interpolation algorithm. If the volume cannot be evaluated (i.e., if a part of the grid was cut off by the boundary of the measurement area) the evaluation will be started on the corners of the bottom plane of the cube.
- All neighboring volumes are evaluated until no neighboring volume with a higher average value is found.

Extrapolation

The extrapolation is based on a least square algorithm [W. Gander, Computermathematik, p.168-180]. Through the points in the first 3 cm along the z-axis, polynomials of order four are calculated. These polynomials are then used to evaluate the points between the surface and the probe tip. The points, calculated from the surface, have a distance of 1 mm from each other.

Interpolation

The interpolation of the points is done with a 3d-Spline. The 3d-Spline is composed of three one-dimensional splines with the "Not a knot"-condition [W. Gander, Computermathematik, p.141-150] (x, y and z -direction) [Numerical Recipes in C, Second Edition, p.123ff].

Volume Averaging

At First the size of the cube is calculated. Then the volume is integrated with the trapezoidal algorithm. 8000 points (20x20x20) are interpolated to calculate the average.

Advanced Extrapolation

DASY5 uses the advanced extrapolation option which is able to compensate boundary effects on E-field probes.



2.4.8 Data Storage and Evaluation

Data Storage

The DASY5 software stores the acquired data from the data acquisition electronics as raw data (in microvolt readings from the probe sensors), together with all necessary software parameters for the data evaluation (probe calibration data, liquid parameters and device frequency and modulation data) in measurement files with the extension ".DA4". The software evaluates the desired unit and format for output each time the data is visualized or exported. This allows verification of the complete software setup even after the measurement and allows correction of incorrect parameter settings. For example, if a measurement has been performed with a wrong crest factor parameter in the device setup, the parameter can be corrected afterwards and the data can be re-evaluated.

The measured data can be visualized or exported in different units or formats, depending on the selected probe type ([V/m], [A/m], [°C], [mW/g], [mW/cm²], [dBrel], etc.). Some of these units are not available in certain situations or show meaningless results, e.g., a SAR output in a lossless media will always be zero. Raw data can also be exported to perform the evaluation with other software packages.

Data Evaluation by SEMCAD

The SEMCAD software automatically executes the following procedures to calculate the field units from the microvolt readings at the probe connector. The parameters used in the evaluation are stored in the configuration modules of the software:

Probe parameters:	- Sensitivity	$Norm_i, a_{i0}, a_{i1}, a_{i2}$
	- Conversion factor	$ConvF_i$
	- Diode compression point	D_{cpi}
Device parameters:	- Frequency	f
	- Crest factor	cf
Media parameters:	- Conductivity	σ
	- Density	ρ

These parameters must be set correctly in the software. They can be found in the component documents or they can be imported into the software from the configuration files issued for the DASY5 components. In the direct measuring mode of the multimeter option, the parameters of the actual system setup are used. In the scan visualization and export modes, the parameters stored in the corresponding document files are used.

The first step of the evaluation is a linearization of the filtered input signal to account for the compression characteristics of the detector diode. The compensation depends on the input signal, the diode type and the DC-transmission factor from the diode to the evaluation electronics.

If the exciting field is pulsed, the crest factor of the signal must be known to correctly compensate for peak power. The formula for each channel can be given as:

$$V_i = U_i + U_i^2 \cdot cf/dcp_i$$

with V_i = compensated signal of channel i (i = x, y, z)
 U_i = input signal of channel i (i = x, y, z)
 cf = crest factor of exciting field (DASY parameter)
 dcp_i = diode compression point (DASY parameter)

From the compensated input signals the primary field data for each channel can be evaluated:

E-field probes:
$$E_i = (V_i / Norm_i \cdot ConvF)^{1/2}$$

H-field probes:
$$H_i = (V_i)^{1/2} \cdot (a_{i0} + a_{i1}f + a_{i2}f^2)/f$$

with V_i = compensated signal of channel i (i = x, y, z)
 $Norm_i$ = sensor sensitivity of channel i (i = x, y, z)
[mV/(V/m)²] for E-field Probes
 $ConvF$ = sensitivity enhancement in solution
 a_{ij} = sensor sensitivity factors for H-field probes
 f = carrier frequency [GHz]
 E_i = electric field strength of channel i in V/m
 H_i = magnetic field strength of channel i in A/m

The RSS value of the field components gives the total field strength (Hermitian magnitude):

$$E_{tot} = (E_x^2 + E_y^2 + E_z^2)^{1/2}$$

The primary field data are used to calculate the derived field units.

$$SAR = (E_{tot}^2 \cdot \sigma) / (\rho \cdot 1000)$$

with SAR = local specific absorption rate in mW/g
 E_{tot} = total field strength in V/m
 σ = conductivity in [mho/m] or [Siemens/m]
 ρ = equivalent tissue density in g/cm³

Note that the density is normally set to 1 (or 1.06), to account for actual brain density rather than the density of the simulation liquid. The power flow density is calculated assuming the excitation field to be a free space field.

$$P_{pwe} = E_{tot}^2 / 3770 \quad \text{or} \quad P_{pwe} = H_{tot}^2 \cdot 37.7$$

with P_{pwe} = equivalent power density of a plane wave in mW/cm²
 E_{tot} = total electric field strength in V/m
 H_{tot} = total magnetic field strength in A/m

2.4.9 Test equipment utilized

This table gives a complete overview of the SAR measurement equipment

Devices used during the test described in chapter 2.5 are marked ☒

	Manufacturer	Device	Type	Serial number	Date of last calibration)*
<input checked="" type="checkbox"/>	Schmid & Partner Engineering AG	Dosimetric E-Field Probe	ES3DV3	3168	2009-12-18
<input checked="" type="checkbox"/>	Schmid & Partner Engineering AG	835 MHz System Validation Dipole	D835V2	4d095	2009-05-25
<input type="checkbox"/>	Schmid & Partner Engineering AG	900 MHz System Validation Dipole	D900V2	1d063	2009-05-26
<input type="checkbox"/>	Schmid & Partner Engineering AG	1800 MHz System Validation Dipole	D1800V2	2d157	2009-05-27
<input checked="" type="checkbox"/>	Schmid & Partner Engineering AG	1900 MHz System Validation Dipole	D1900V2	5d091	2009-05-28
<input type="checkbox"/>	Schmid & Partner Engineering AG	2000 MHz System Validation Dipole	D2000V2	1036	2009-05-29
<input type="checkbox"/>	Schmid & Partner Engineering AG	Data acquisition electronics	DAE4	851	2010-06-30
<input checked="" type="checkbox"/>	Schmid & Partner Engineering AG	Data acquisition electronics	DAE4	852	2010-08-11
<input checked="" type="checkbox"/>	Schmid & Partner Engineering AG	Software	DASY 5 V5.0	N/A	N/A
<input checked="" type="checkbox"/>	Schmid & Partner Engineering AG	Twin Phantom	SAM1	TP-1475	N/A
<input checked="" type="checkbox"/>	Schmid & Partner Engineering AG	Twin Phantom	SAM2	TP-1474	N/A
<input checked="" type="checkbox"/>	Rohde & Schwarz	Universal Radio Communication Tester	CMU 200	111379	2009-09-26
<input checked="" type="checkbox"/>	Agilent)*	Network Analyser 300 kHz to 8.5 GHz	E5071B	MY42404956	2010-03-08
<input checked="" type="checkbox"/>	Agilent	Dielectric Probe Kit	85070E	2484	N/A
<input checked="" type="checkbox"/>	Agilent	Signal Generator	N5181A	MY47420989	2010-03-08
<input checked="" type="checkbox"/>	MINI-CIRCUITS	Amplifier	ZHL-42W	QA0746001	N/A
<input checked="" type="checkbox"/>	Agilent	Power Meter	E4417A	MY45101339	2010-05-19
<input checked="" type="checkbox"/>	Agilent	Power Meter Sensor	E9321A	MY44420359	2010-05-19

Note: The calibration interval of validation dipoles is 3 years.

)*: Network analyzer probe calibration against air, distilled water and a shorting block performed before measuring liquid parameters.

2.4.10 Tissue simulating liquids: dielectric properties

The following materials are used for producing the tissue-equivalent materials.

(liquids used for tests described in chapter 2.5. are marked with ☒) :

Ingredients (% of weight)	Frequency (MHz)					
	☐ 450	☒ 835	☐ 900	☐ 1800	☒ 1900	☐ 2450
frequency band	☐ 450	☒ 835	☐ 900	☐ 1800	☒ 1900	☐ 2450
Tissue Type	Head	Head	Head	Head	Head	Head
Water	38.56	41.45	40.92	52.64	54.9	62.7
Salt (NaCl)	3.95	1.45	1.48	0.36	0.18	0.5
Sugar	56.32	56.0	56.5	0.0	0.0	0.0
HEC	0.98	1.0	1.0	0.0	0.0	0.0
Bactericide	0.19	0.1	0.1	0.0	0.0	0.0
Triton X-100	0.0	0.0	0.0	0.0	0.0	36.8
DGBE	0.0	0.0	0.0	47.0	44.92	0.0

Table6: Head tissue dielectric properties

Ingredients (% of weight)	Frequency (MHz)					
	☐ 450	☒ 835	☐ 900	☐ 1800	☒ 1900	☐ 2450
frequency band	☐ 450	☒ 835	☐ 900	☐ 1800	☒ 1900	☐ 2450
Tissue Type	Body	Body	Body	Body	Body	Body
Water	51.16	52.4	56.0	69.91	69.91	73.2
Salt (NaCl)	1.49	1.40	0.76	0.13	0.13	0.04
Sugar	46.78	45.0	41.76	0.0	0.0	0.0
HEC	0.52	1.0	1.21	0.0	0.0	0.0
Bactericide	0.05	0.1	0.27	0.0	0.0	0.0
Triton X-100	0.0	0.0	0.0	0.0	0.0	0.0
DGBE	0.0	0.0	0.0	29.96	29.96	26.7

Table7: Body tissue dielectric properties

Salt: 99+% Pure Sodium Chloride

Sugar: 98+% Pure Sucrose

Water: De-ionized, 16MΩ+ resistivity

HEC: Hydroxyethyl Cellulose

DGBE: 99+% Di(ethylene glycol) butyl ether, [2-(2-butoxyethoxy)ethanol]

Triton X-100(ultra pure): Polyethylene glycol mono [4-(1,1,3,3-tetramethylbutyl)phenyl]ether

Note : Due to their availability body tissue simulating liquids as defined by FCC OET Bulletin 65 Supplement C are generally used for body worn SAR testing according to European standards.

2.4.11 Tissue simulating liquids: parameters

Used Target Frequency	Target Head Tissue		Measured Head Tissue		Measured Date
	Permittivity (+/-5%)	Conductivity [S/m] (+/-5%)	Permittivity	Conductivity [S/m]	
1900	40.0	1.40	39.79	1.33	2010-09-27
835	41.5	0.90	42.23	0.89	2010-09-26

Table8: Parameter of the head tissue simulating liquid

Used Target Frequency	Target Body Tissue		Measured Body Tissue		Measured Date
	Permittivity (+/-5%)	Conductivity [S/m] (+/-5%)	Permittivity	Conductivity [S/m]	
1900	53.3	1.52	52.05	1.49	2010-09-19
835	55.2	0.97	55.53	1.04	2010-09-20

Table9: Parameter of the body tissue simulating liquid

Note: The dielectric properties have been measured using the contact probe method at 22°C.

2.4.12 Measurement uncertainty evaluation for SAR test

The overall combined measurement uncertainty of the measurement system is $\pm 10.7\%$ ($K=1$).

The expanded uncertainty ($k=2$) is assessed to be $\pm 21.4\%$

This measurement uncertainty budget is suggested by IEEE P1528 and determined by Schmid & Partner Engineering AG. The breakdown of the individual uncertainties is as follows:

Error Sources	Uncertainty Value	Probability Distribution	Divisor	c_i 1g	c_i 10g	Standard Uncertainty 1g	Standard Uncertainty 10g	v_i^2 or v_{eff}
Measurement System								
Probe calibration	$\pm 5.9\%$	Normal	1	1	1	$\pm 5.9\%$	$\pm 5.9\%$	∞
Axial isotropy	$\pm 4.7\%$	Rectangular	$\sqrt{3}$	0.7	0.7	$\pm 1.9\%$	$\pm 1.9\%$	∞
Hemispherical isotropy	$\pm 9.6\%$	Rectangular	$\sqrt{3}$	0.7	0.7	$\pm 3.9\%$	$\pm 3.9\%$	∞
Spatial resolution	$\pm 0.0\%$	Rectangular	$\sqrt{3}$	1	1	$\pm 0.0\%$	$\pm 0.0\%$	∞
Boundary effects	$\pm 1.0\%$	Rectangular	$\sqrt{3}$	1	1	$\pm 0.6\%$	$\pm 0.6\%$	∞
Probe linearity	$\pm 4.7\%$	Rectangular	$\sqrt{3}$	1	1	$\pm 2.7\%$	$\pm 2.7\%$	∞
System detection limits	$\pm 1.0\%$	Rectangular	$\sqrt{3}$	1	1	$\pm 0.6\%$	$\pm 0.6\%$	∞
Readout electronics	$\pm 0.3\%$	Normal	1	1	1	$\pm 0.3\%$	$\pm 0.3\%$	∞
Response time	$\pm 0.8\%$	Rectangular	$\sqrt{3}$	1	1	$\pm 0.5\%$	$\pm 0.5\%$	∞
Integration time	$\pm 2.6\%$	Rectangular	$\sqrt{3}$	1	1	$\pm 1.5\%$	$\pm 1.5\%$	∞
RF ambient conditions	$\pm 3.0\%$	Rectangular	$\sqrt{3}$	1	1	$\pm 1.7\%$	$\pm 1.7\%$	∞
Probe positioner	$\pm 0.4\%$	Rectangular	$\sqrt{3}$	1	1	$\pm 0.2\%$	$\pm 0.2\%$	∞
Probe positioning	$\pm 2.9\%$	Rectangular	$\sqrt{3}$	1	1	$\pm 1.7\%$	$\pm 1.7\%$	∞
Max. SAR evaluation	$\pm 1.0\%$	Rectangular	$\sqrt{3}$	1	1	$\pm 0.6\%$	$\pm 0.6\%$	∞
Test Sample Related								
Device positioning	$\pm 2.9\%$	Normal	1	1	1	$\pm 2.9\%$	$\pm 2.9\%$	145
Device holder uncertainty	$\pm 3.6\%$	Normal	1	1	1	$\pm 3.6\%$	$\pm 3.6\%$	5
Power drift	$\pm 5.0\%$	Rectangular	$\sqrt{3}$	1	1	$\pm 2.9\%$	$\pm 2.9\%$	∞
Phantom and Set-up								
Phantom uncertainty	$\pm 4.0\%$	Rectangular	$\sqrt{3}$	1	1	$\pm 2.3\%$	$\pm 2.3\%$	∞
Liquid conductivity (target)	$\pm 5.0\%$	Rectangular	$\sqrt{3}$	0.64	0.43	$\pm 1.8\%$	$\pm 1.2\%$	∞
Liquid conductivity (meas.)	$\pm 2.5\%$	Normal	1	0.64	0.43	$\pm 1.6\%$	$\pm 1.1\%$	∞
Liquid permittivity (target)	$\pm 5.0\%$	Rectangular	$\sqrt{3}$	0.6	0.49	$\pm 1.7\%$	$\pm 1.4\%$	∞
Liquid permittivity (meas.)	$\pm 2.5\%$	Normal	1	0.6	0.49	$\pm 1.5\%$	$\pm 1.2\%$	∞
Combined Uncertainty						$\pm 10.9\%$	$\pm 10.7\%$	387
Expanded Std. Uncertainty						$\pm 21.9\%$	$\pm 21.4\%$	

Table10: Measurement uncertainties

2.4.13 Measurement uncertainty evaluation for system validation

The overall combined measurement uncertainty of the measurement system is $\pm 9.2\%$ ($K=1$).

The expanded uncertainty ($k=2$) is assessed to be $\pm 18.4\%$

This measurement uncertainty budget is suggested by IEEE P1528 and determined by Schmid & Partner Engineering AG. The breakdown of the individual uncertainties is as follows:

Error Sources	Uncertainty Value	Probability Distribution	Divisor	c_i 1g	c_i 10g	Standard Uncertainty 1g	Standard Uncertainty 10g	v_i^2 or v_{eff}
Measurement System								
Probe calibration	$\pm 5.9\%$	Normal	1	1	1	$\pm 5.9\%$	$\pm 5.9\%$	∞
Axial isotropy	$\pm 4.7\%$	Rectangular	$\sqrt{3}$	1	1	$\pm 2.7\%$	$\pm 2.7\%$	∞
Hemispherical isotropy	$\pm 9.6\%$	Rectangular	$\sqrt{3}$	0.7	0.7	$\pm 0.0\%$	$\pm 0.0\%$	∞
Boundary effects	$\pm 1.0\%$	Rectangular	$\sqrt{3}$	1	1	$\pm 0.6\%$	$\pm 0.6\%$	∞
Probe linearity	$\pm 4.7\%$	Rectangular	$\sqrt{3}$	1	1	$\pm 2.7\%$	$\pm 2.7\%$	∞
System detection limits	$\pm 1.0\%$	Rectangular	$\sqrt{3}$	1	1	$\pm 0.6\%$	$\pm 0.6\%$	∞
Readout electronics	$\pm 0.3\%$	Normal	1	1	1	$\pm 0.3\%$	$\pm 0.3\%$	∞
Response time	$\pm 0.0\%$	Rectangular	$\sqrt{3}$	1	1	$\pm 0.0\%$	$\pm 0.0\%$	∞
Integration time	$\pm 0.0\%$	Rectangular	$\sqrt{3}$	1	1	$\pm 0.0\%$	$\pm 0.0\%$	∞
RF ambient conditions	$\pm 1.0\%$	Rectangular	$\sqrt{3}$	1	1	$\pm 0.6\%$	$\pm 0.6\%$	∞
Probe positioner	$\pm 0.4\%$	Rectangular	$\sqrt{3}$	1	1	$\pm 0.2\%$	$\pm 0.2\%$	∞
Probe positioning	$\pm 2.9\%$	Rectangular	$\sqrt{3}$	1	1	$\pm 1.7\%$	$\pm 1.7\%$	∞
Max. SAR evaluation	$\pm 1.0\%$	Rectangular	$\sqrt{3}$	1	1	$\pm 0.6\%$	$\pm 0.6\%$	∞
Dipole								
Deviation of experimental dipole	$\pm 5.5\%$	Rectangular	$\sqrt{3}$	1	1	$\pm 3.2\%$	$\pm 3.2\%$	∞
Dipole axis to liquid distance	$\pm 2.0\%$	Rectangular	1	1	1	$\pm 1.2\%$	$\pm 1.2\%$	∞
Power drift	$\pm 4.7\%$	Rectangular	$\sqrt{3}$	1	1	$\pm 2.7\%$	$\pm 2.7\%$	∞
Phantom and Set-up								
Phantom uncertainty	$\pm 4.0\%$	Rectangular	$\sqrt{3}$	1	1	$\pm 2.3\%$	$\pm 2.3\%$	∞
Liquid conductivity (target)	$\pm 5.0\%$	Rectangular	$\sqrt{3}$	0.64	0.43	$\pm 1.8\%$	$\pm 1.2\%$	∞
Liquid conductivity (meas.)	$\pm 2.5\%$	Normal	1	0.64	0.43	$\pm 1.6\%$	$\pm 1.1\%$	∞
Liquid permittivity (target)	$\pm 5.0\%$	Rectangular	$\sqrt{3}$	0.6	0.49	$\pm 1.7\%$	$\pm 1.4\%$	∞
Liquid permittivity (meas.)	$\pm 2.5\%$	Normal	1	0.6	0.49	$\pm 1.5\%$	$\pm 1.2\%$	∞
Combined Uncertainty						$\pm 9.5\%$	$\pm 9.2\%$	
Expanded Std. Uncertainty						$\pm 18.9\%$	$\pm 18.4\%$	

Table11: Measurement uncertainties

2.4.14 System validation

The system validation is performed for verifying the accuracy of the complete measurement system and performance of the software. The system validation is performed with tissue equivalent material according to IEEE P1528 (described above). The following table shows validation results for all frequency bands and tissue liquids used during the tests of the test item described in chapter 1.5. (graphic plot(s) see annex 1).

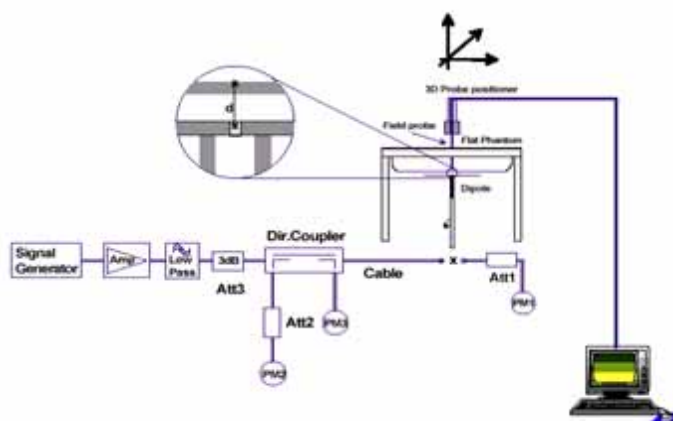
Validation Kit	Frequency	Target SAR _{1g} (250 mW) (+/- 10%)	Target SAR _{10g} (250 mW) (+/- 10%)	Measured SAR _{1g}	Measured SAR _{10g}	Measured date
D1900V2 S/N: 5d091	1900 MHz head	9.60mW/g	5.10mW/g	9.91mW/g	5.19mW/g	2010-09-27
D1900V2 S/N: 5d091	1900 MHz body	10.1mW/g	5.27mW/g	10.2mW/g	5.30mW/g	2010-09-19
D835V2 S/N: 4d095	835 MHz head	2.29mW/g	1.50mW/g	2.48mW/g	1.63mW/g	2010-09-26
D835V2 S/N: 4d095	835 MHz body	2.49mW/g	1.62mW/g	2.71mW/g	1.78mW/g	2010-09-20

Table12: Results system validation

2.4.15 Validation procedure

The validation is performed by using a validation dipole which is positioned parallel to the planar part of the SAM phantom at the reference point. The distance of the dipole to the SAM phantom is determined by a plexiglass spacer. The dipole is connected to the signal source consisting of signal generator and amplifier via a directional coupler, N-connector cable and adaption to SMA. It is fed with a power of 250 mW. To adjust this power a power meter is used. The power sensor is connected to the cable before the validation to measure the power at this point and do adjustments at the signal generator. At the outputs of the directional coupler both return loss as well as forward power are controlled during the validation to make sure that emitted power at the dipole is kept constant. This can also be checked by the power drift measurement after the test (result on plot).

Validation results have to be equal or near the values determined during dipole calibration (target SAR in table above) with the relevant liquids and test system.



2.5 Test Results

2.5.1 Conducted power measurements

For the measurements a Rohde & Schwarz Radio Communication Tester CMU 200 was used. The output power was measured using an integrated RF connector and attached RF cable. The conducted output power was also checked before and after each SAR measurement. The resulting power values were within a 0.2 dB tolerance of the values shown below.

Note: CMU200 measures GSM peak and average output power for active timeslots.
For SAR the timebased average power is relevant. The difference in between depends on the duty cycle of the TDMA signal :

No. of timeslots	1	2	3	4
Duty Cycle	1 : 8	1: 4	1 : 2.66	1 : 2
timebased avg. power compared to slotted avg. power	- 9 dB	- 6 dB	- 4.25 dB	- 3 dB

The signalling modes differ as follows:

mode	coding scheme	modulation
GPRS	CS1 to CS4	GMSK

Conducted power results**GSM1900 [GPRS]**

GSM1900 (CS)		Conducted power (dBm)			Averaged power(dBm)		
		Channel 512	Channel 661	Channel 810	Channel 512	Channel 661	Channel 810
Before test		29.51	29.48	29.54	20.51	20.48	20.54
After test		29.49	29.47	29.52	20.49	20.47	20.52
GSM1900 GPRS (GMSK)		Conducted power (dBm)			Averaged power(dBm)		
		Channel 512	Channel 661	Channel 810	Channel 512	Channel 661	Channel 810
1TX slot	Before test	29.48	29.46	29.51	20.48	20.46	20.51
	After test	29.47	29.48	29.52	20.47	20.48	20.52
2 TX slots	Before test	28.52	28.55	28.53	22.52	22.55	22.53
	After test	28.51	28.56	28.52	22.51	22.56	22.52
3TX slot	Before test	26.46	26.53	26.54	22.21	22.28	22.29
	After test	26.45	26.52	26.55	22.20	22.27	22.30
4TX slot	Before test	25.61	25.63	25.58	22.61	22.63	22.58
	After test	25.62	25.64	25.56	22.62	22.64	22.56

Table13: Conducted power measurement results (GSM1900)

GSM850 [GPRS]

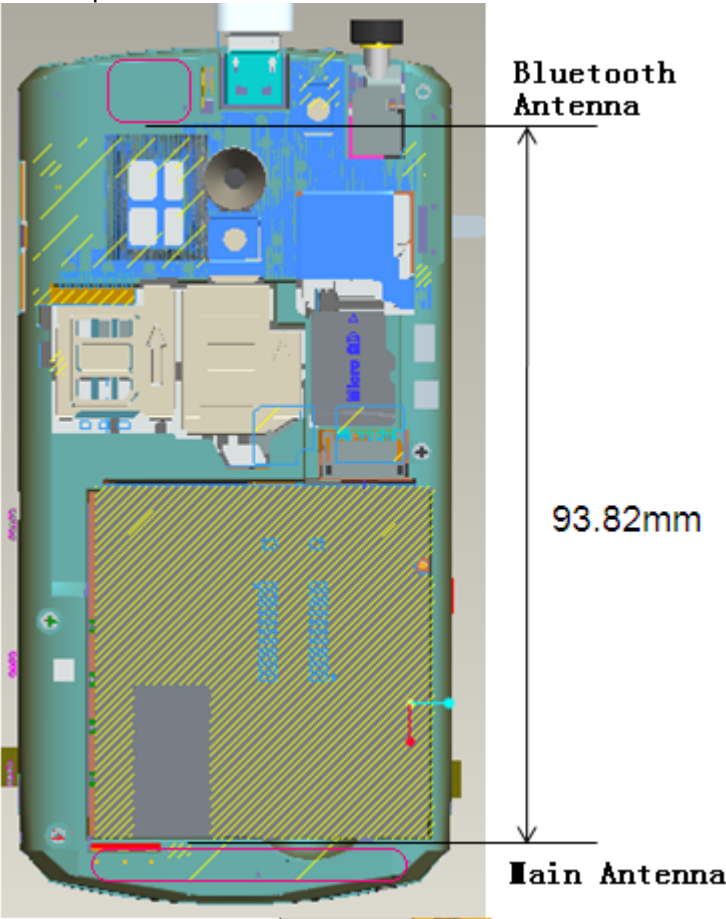
GSM850 (CS)		Conducted power (dBm)			Averaged power(dBm)		
		Channel 128	Channel 192	Channel 251	Channel 128	Channel 192	Channel 251
Before test		32.54	32.51	32.56	23.54	23.51	23.56
After test		32.52	32.53	32.55	23.52	23.53	23.55
GSM850 GPRS (GMSK)		Conducted power (dBm)			Averaged power(dBm)		
		Channel 128	Channel 192	Channel 251	Channel 128	Channel 192	Channel 251
1 TX slot	Before test	32.52	32.48	32.53	23.52	23.48	23.53
	After test	32.54	32.46	32.54	23.54	23.46	23.54
2TX slots	Before test	30.18	30.12	30.22	24.18	24.12	24.22
	After test	30.21	30.14	30.21	24.21	24.14	24.21
3 TX slot	Before test	28.44	28.43	28.49	24.19	24.18	24.24
	After test	28.42	28.41	28.48	24.17	24.16	24.23
4TX slots	Before test	27.42	27.46	27.51	24.42	24.46	24.51
	After test	27.43	27.44	27.53	24.43	24.44	24.53

Table14: Conducted power measurement results (GSM850)



2.5.2 Multiple Transmitter Information

The distance between BT antenna and GSM antenna is 9.382cm> 5cm , The location of the antennas inside mobile phone is shown as below picture:



The output power of BT antenna is as following:

Channel	Ch 0 2402 MHz	Ch 39 2441 Mhz	Ch 78 2480 MHz
Peak Conducted Output Power(dBm)	7.98	7.44	7.12

So Max Peak Conducted Output Power is 7.98dBm equivalent to 6.28mW, which is 2P_{Ref} (24mW).

The following tables' list information which is relevant for the decision if a simultaneous transmit evaluation is necessary according to KDB 648474.

Stand-alone SAR

According to the output power measurement result and the distance between BT antenna and main antenna we can draw the conclusion that:

1) Stand-alone SAR are not required for BT, because the output power of BT transmitter is 2P_{Ref} and its antenna is 5cm from other antenna.

Simultaneous SAR

About BT, because stand-alone SAR are not required for BT and its antenna is > 5cm from other antenna, so simultaneous SAR are not required for BT.

2.5.3 Test results (Head and Body SAR)

GSM 1900 (GSM/GPRS)

The table contains the measured SAR values averaged over a mass of 1 g						
Channel / frequency	Position	Left hand position	Right hand position	Power Drift (dB)	Limit	Liquid temperature
G6150, GSM						
661 / 1880.0 MHz	cheek	0.168 W/kg	0.124 W/kg	0.160 / 0.079	1.6 W/kg	21.5/21.5 °C
661 / 1880.0 MHz	tilted15°	0.074 W/kg	0.087 W/kg	0.033 / -0.112	1.6 W/kg	21.5/21.5 °C
810 / 1909.8 MHz	cheek	0.187 W/kg	--- W/kg	0.186 / ---	1.6 W/kg	21.5/--- °C
512 / 1850.2 MHz	cheek	0.186 W/kg	--- W/kg	-0.159 / ---	1.6 W/kg	21.5/--- °C

Table15: Test results (Head SAR GSM1900MH)

The table contains the measured SAR values averaged over a mass of 1 g					
Channel / frequency	Position	Body worn	Power Drift (dB)	Limit	Liquid temperature
G6150,GPRS					
661 / 1880.0 MHz	rear 4TS	0.186 W/kg	0.118	1.6 W/kg	21.5 °C
661 / 1880.0 MHz	rear 3TS	0.161 W/kg	0.171	1.6 W/kg	21.5 °C
661 / 1880.0 MHz	rear 2TS	0.170 W/kg	0.127	1.6 W/kg	21.5 °C
661 / 1880.0 MHz	rear 1TS	0.130 W/kg	-0.138	1.6 W/kg	21.5 °C
661 / 1880.0 MHz	front 4TS	0.175 W/kg	0.133	1.6 W/kg	21.5 °C
G6150,GPRS					
810 / 1909.8 MHz	rear 4TS	0.201 W/kg	-0.112	1.6 W/kg	21.5 °C
512 / 1850.2 MHz	rear 4TS	0.218 W/kg	0.142	1.6 W/kg	21.5 °C
G6150, Speech Mode with Headset					
512 / 1850.2 MHz	rear	0.095 W/kg	0.004	1.6 W/kg	21.5 °C
G6150, Speech Mode with Bluetooth Headset					
512 / 1850.2 MHz	rear	0.110 W/kg	0.114	1.6 W/kg	21.5 °C

Table16: Test results (Body SAR GSM1900MHz)

Note:

- 1) The value with blue colour is the maximum SAR value.
- 2) Upper and lower frequencies were measured at the worst position.
- 3) The SAR test shall be performed at the high, middle and low frequency channels of each operating mode. If the SAR measured at mid-band channel for each test configuration is at least 3.0 dB lower than the SAR limit (< 0.8 W/kg), testing at the high and low channels is optional.
- 4) Tests in body position were performed with 15 mm air gap between DUT and SAM to simulate the use of a non-metallic belt-clip or holster.
- 5) The addition body test was performed at worst case.

GSM 850 (GSM/GPRS)

The table contains the measured SAR values averaged over a mass of 1 g

Channel / frequency	Position	Left hand position	Right hand position	Power Drift (dB)	Limit	Liquid temperature
G6150,GSM						
192 / 836.6MHz	cheek	0.532 W/kg	0.463 W/kg	-0.033/-0.037	1.6 W/kg	21.5/21.5 °C
192 / 836.6MHz	tilted15°	0.293 W/kg	0.275 W/kg	-0.006/-0.025	1.6 W/kg	21.5/21.5 °C
251 / 848.8MHz	cheek	0.571 W/kg	--- W/kg	-0.047/---	1.6 W/kg	---/21.5 °C
128 / 824.2MHz	cheek	0.341 W/kg	--- W/kg	0.122 /---	1.6 W/kg	---/21.5 °C

Table17: Test results (Head SAR GSM 850MHz)

The table contains the measured SAR values averaged over a mass of 1 g

Channel / frequency	Position	Body worn	Power Drift (dB)	Limit	Liquid temperature
G6150,GPRS					
192/ 836.6 MHz	rear 4TS	0.908 W/kg	-0.045	1.6 W/kg	21.5 °C
192/ 836.6 MHz	rear 3TS	0.870 W/kg	0.057	1.6 W/kg	21.5 °C
192/ 836.6 MHz	rear 2TS	0.885 W/kg	0.039	1.6 W/kg	21.5 °C
192/ 836.6 MHz	rear 1TS	0.633 W/kg	0.160	1.6 W/kg	21.5 °C
192/ 836.6 MHz	front 4TS	0.655 W/kg	-0.059	1.6 W/kg	21.5 °C
G6150,GPRS					
251 / 848.8 MHz	rear 4TS	1.030 W/kg	0.144	1.6 W/kg	21.5 °C
128 / 824.2 MHz	rear 4TS	0.613 W/kg	-0.177	1.6 W/kg	21.5 °C
GPRS, Body					
251 / 848.8 MHz	rear 3TS	0.97 W/kg	0.009	1.6 W/kg	21.5 °C
128 / 824.2 MHz	rear 3TS	0.566 W/kg	0.081	1.6 W/kg	21.5 °C
G6150,GPRS					
251 / 848.8 MHz	rear 2TS	1.000 W/kg	0.008	1.6 W/kg	21.5 °C
128 / 824.2 MHz	rear 2TS	0.603 W/kg	-0.165	1.6 W/kg	21.5 °C
G6150,Speech Mode with Headset					
251 / 848.8 MHz	rear	0.459 W/kg	-0.068	1.6 W/kg	21.5 °C
G6150, Speech Mode with Bluetooth Headset					
251 / 848.8 MHz	rear	0.695 W/kg	-0.112	1.6 W/kg	21.5 °C

Table18: Test results (Body SAR GSM 850MHz)

Note: 1) The value with blue colour is the maximum SAR value of each test band.

2) Upper and lower frequencies were measured at the worst position.

3) The SAR test shall be performed at the high, middle and low frequency channels of each operating mode. If the SAR measured at mid-band channel for each test configuration is at least 3.0 dB lower than the SAR limit (< 0.8 W/kg), testing at the high and low channels is optional.

4) Tests in body position were performed with 15 mm air gap between DUT and SAM to simulate the use of a non-metallic belt-clip or holster.

5) The addition body test was performed at worst case.

2.5.4 Extrapolated SAR Values

Limit of SAR (W/kg)		Conducted Power	1g Average	Tune-up procedures maximum Power(dBm)	1g Average
			1.6		1.6
Worst Case		Measurement Result(dBm)	Measurement Result(W/kg)		Extrapolated Result (W/kg)
Test Position	Channel				
GSM 1900					
left hand touched	High	29.51	0.187	30.5	0.235
GSM 1900 [GPRS (4 timeslots uplink)]					
body worn rear	Low	25.62	0.218	26.5	0.267
GSM 850					
left hand touched	High	32.56	0.571	33.5	0.709
GSM 850 [GPRS (4 timeslots uplink)]					
body worn rear	High	27.53	1.03	28.5	1.288

Table19: Extrapolated SAR Values of highest measured SAR (GSM/GPRS)

Annex 1 System performance verification

Date/Time: 2010-09-27 21:55:41

SystemPerformanceCheck-D1900 head**DUT: Dipole 1900 MHz; Type: D1900V2; Serial: D1900V2 - SN: 5d091**

Communication System: CW; Frequency: 1900 MHz; Duty Cycle: 1:1

Medium parameters used: $f = 1900$ MHz; $\sigma = 1.33$ mho/m; $\epsilon_r = 39.8$; $\rho = 1000$ kg/m³

Phantom section: Flat Section

DASY5 Configuration:

- Probe: ES3DV3 - SN3168; ConvF(4.99, 4.99, 4.99); Calibrated: 2009-12-18
- Sensor-Surface: 4mm (Mechanical Surface Detection)
- Electronics: DAE4 Sn852; Calibrated: 2009-12-18
- Phantom: SAM2; Type: SAM; Serial: TP-1474
- Measurement SW: DASY5, V5.0 Build 125; SEMCAD X Version 13.2 Build 87

d=10mm, Pin=250mW/Area Scan (5x8x1): Measurement grid: dx=15mm, dy=15mm

Maximum value of SAR (measured) = 10.6 mW/g

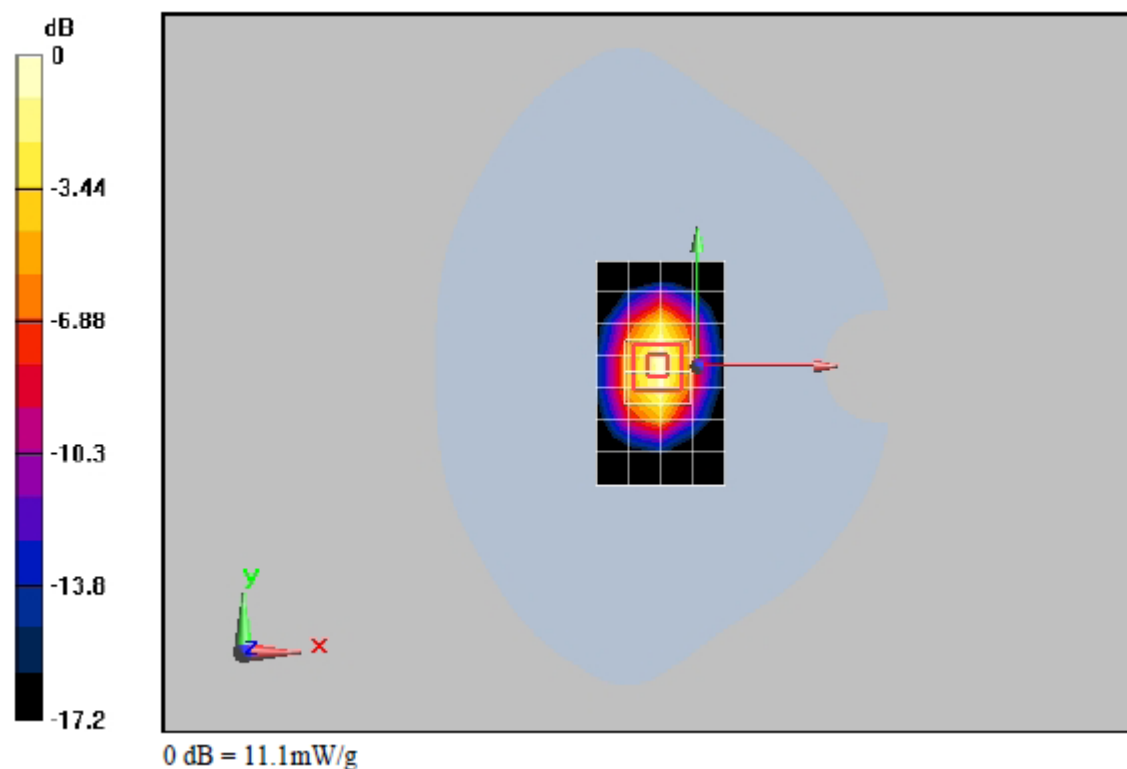
d=10mm, Pin=250mW/Zoom Scan (7x7x7) (7x7x7)/Cube 0: Measurement grid: dx=5mm, dy=5mm, dz=5mm

Reference Value = 92.8 V/m; Power Drift = 0.056 dB

Peak SAR (extrapolated) = 18 W/kg

SAR(1 g) = 9.91 mW/g; SAR(10 g) = 5.19 mW/g

Maximum value of SAR (measured) = 11.1 mW/g

**Additional information:**

position or distance of DUT to SAM (if not standard head positions) :

ambient temperature: 23.0°C; liquid temperature: 21.5°C

Date/Time: 2010-09-26 22:11:42

SystemPerformanceCheck-D835 head**DUT: Dipole 835 MHz; Type: D835V2; Serial: D835V2 - SN:4d059**

Communication System: CW; Frequency: 835 MHz; Duty Cycle: 1:1

Medium parameters used: $f = 835$ MHz; $\sigma = 0.891$ mho/m; $\epsilon_r = 42.2$; $\rho = 1000$ kg/m³

Phantom section: Flat Section

DASY5 Configuration:

- Probe: ES3DV3 - SN3168; ConvF(6.06, 6.06, 6.06); Calibrated: 2009-12-18
- Sensor-Surface: 4mm (Mechanical Surface Detection)
- Electronics: DAE4 Sn852; Calibrated: 2009-12-18
- Phantom: SAM1; Type: SAM; Serial: TP-1475
- Measurement SW: DASY5, V5.0 Build 125; SEMCAD X Version 13.2 Build 87

d=15mm, Pin=250mW/Area Scan (6x11x1): Measurement grid: dx=15mm, dy=15mm

Maximum value of SAR (measured) = 2.53 mW/g

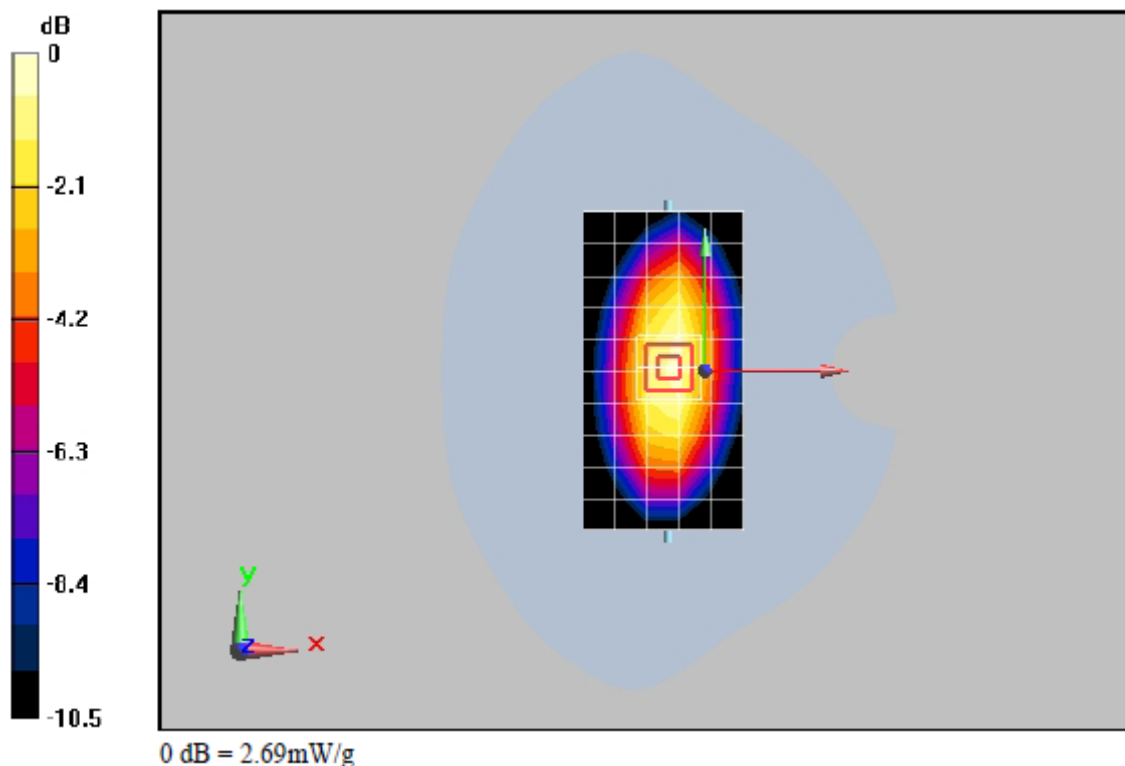
d=15mm, Pin=250mW/Zoom Scan (7x7x7) (7x7x7)/Cube 0: Measurement grid: dx=5mm, dy=5mm, dz=5mm

Reference Value = 55.7 V/m; Power Drift = 0.080 dB

Peak SAR (extrapolated) = 3.63 W/kg

SAR(1 g) = 2.48 mW/g; SAR(10 g) = 1.63 mW/g

Maximum value of SAR (measured) = 2.69 mW/g

**Additional information:**

position or distance of DUT to SAM (if not standard head positions) :

ambient temperature: 23.0°C; liquid temperature: 21.5°C

Date/Time: 2010-09-19 21:41:21

SystemPerformanceCheck-D1900 body**DUT: Dipole 1900 MHz; Type: D1900V2; Serial: D1900V2 - SN: 5d091**

Communication System: CW; Frequency: 1900 MHz; Duty Cycle: 1:1

Medium parameters used: $f = 1900$ MHz; $\sigma = 1.49$ mho/m; $\epsilon_r = 52.1$; $\rho = 1000$ kg/m³

Phantom section: Flat Section

DASY5 Configuration:

- Probe: ES3DV3 - SN3168; ConvF(4.62, 4.62, 4.62); Calibrated: 2009-12-18
- Sensor-Surface: 4mm (Mechanical Surface Detection)
- Electronics: DAE4 Sn852; Calibrated: 2009-12-18
- Phantom: SAM2; Type: SAM; Serial: TP-1474
- Measurement SW: DASY5, V5.0 Build 125; SEMCAD X Version 13.2 Build 87

d=10mm, Pin=250mW/Area Scan (5x8x1): Measurement grid: dx=15mm, dy=15mm

Maximum value of SAR (measured) = 10.6 mW/g

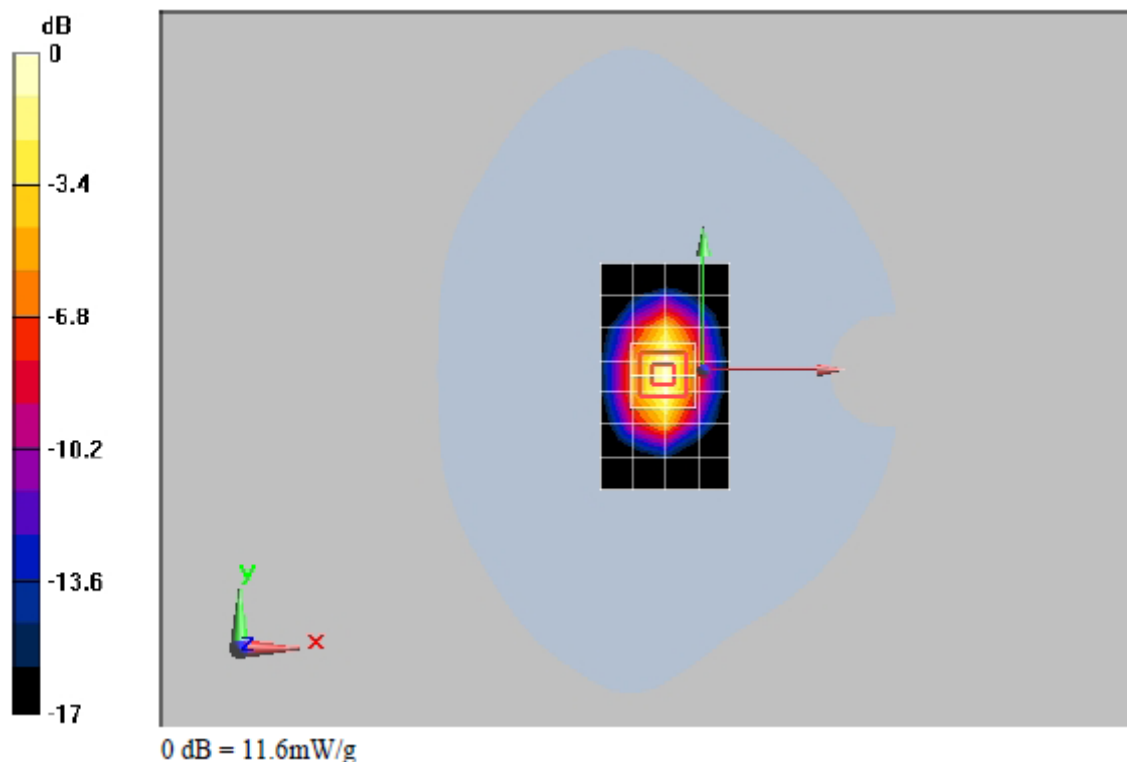
d=10mm, Pin=250mW/Zoom Scan (7x7x7) (7x7x7)/Cube 0: Measurement grid: dx=5mm, dy=5mm, dz=5mm

Reference Value = 89.1 V/m; Power Drift = 0.083 dB

Peak SAR (extrapolated) = 18.3 W/kg

SAR(1 g) = 10.2 mW/g; SAR(10 g) = 5.3 mW/g

Maximum value of SAR (measured) = 11.6 mW/g

**Additional information:**

position or distance of DUT to SAM (if not standard head positions) :

ambient temperature: 23.0°C; liquid temperature: 21.5°C

Date/Time: 2010-09-20 21:51:12

SystemPerformanceCheck-D835 body**DUT: Dipole 835 MHz; Type: D835V2; Serial: D835V2 - SN:4d059**

Communication System: CW; Frequency: 835 MHz; Duty Cycle: 1:1

Medium parameters used: $f = 835$ MHz; $\sigma = 1.04$ mho/m; $\epsilon_r = 55.5$; $\rho = 1000$ kg/m³

Phantom section: Flat Section

DASY5 Configuration:

- Probe: ES3DV3 - SN3168; ConvF(5.97, 5.97, 5.97); Calibrated: 2009-12-18
- Sensor-Surface: 4mm (Mechanical Surface Detection)
- Electronics: DAE4 Sn852; Calibrated: 2009-12-18
- Phantom: SAM1; Type: SAM; Serial: TP-1475
- Measurement SW: DASY5, V5.0 Build 125; SEMCAD X Version 13.2 Build 87

d=15mm, Pin=250mW/Area Scan (6x11x1): Measurement grid: dx=15mm, dy=15mm

Maximum value of SAR (measured) = 2.75 mW/g

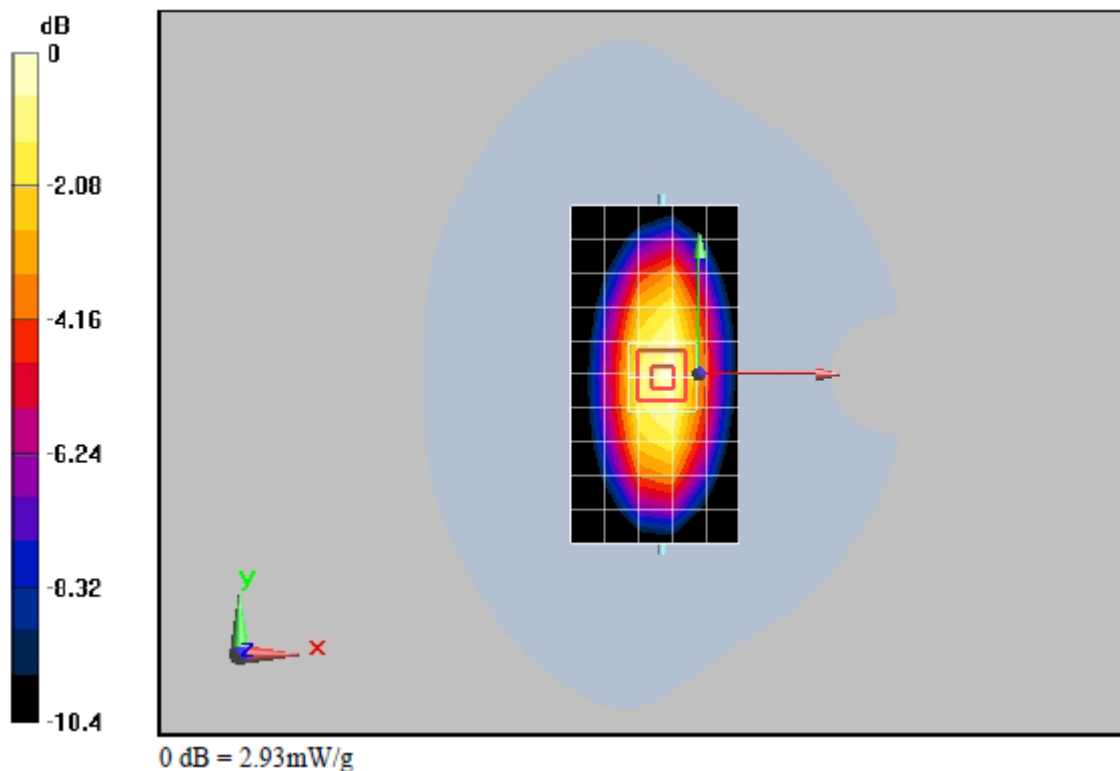
d=15mm, Pin=250mW/Zoom Scan (7x7x7) (7x7x7)/Cube 0: Measurement grid: dx=5mm, dy=5mm, dz=5mm

Reference Value = 54.2 V/m; Power Drift = 0.00703 dB

Peak SAR (extrapolated) = 3.94 W/kg

SAR(1 g) = 2.71 mW/g; SAR(10 g) = 1.78 mW/g

Maximum value of SAR (measured) = 2.93 mW/g

**Additional information:**

position or distance of DUT to SAM (if not standard head positions) :

ambient temperature: 23.0°C; liquid temperature: 21.5°C

Annex 2 Measurement results (printout from DASY TM)**Annex 2.1 PCS 1900 MHz head**

Date/Time: 2010-09-27 22:30:48

P1528_OET65_EN62209- LeftHandSide touched –GSM1900**DUT: HUAWEI G6150**

Communication System: PCS 1900; Frequency: 1880 MHz;Duty Cycle: 1:8.3

Medium parameters used: $f = 1880$ MHz; $\sigma = 1.37$ mho/m; $\epsilon_r = 40.1$; $\rho = 1000$ kg/m³

Phantom section: Left Section

DASY5 Configuration:

- Probe: ES3DV3 - SN3168; ConvF(4.99, 4.99, 4.99); Calibrated: 2009-12-18
- Sensor-Surface: 4mm (Mechanical Surface Detection)
- Electronics: DAE4 Sn852; Calibrated: 2009-12-18
- Phantom: SAM2; Type: SAM; Serial: TP-1474
- Measurement SW: DASY5, V5.0 Build 125; SEMCAD X Version 13.2 Build 87

body/Area Scan (8x11x1): Measurement grid: dx=15mm, dy=15mm

Maximum value of SAR (measured) = 0.163 mW/g

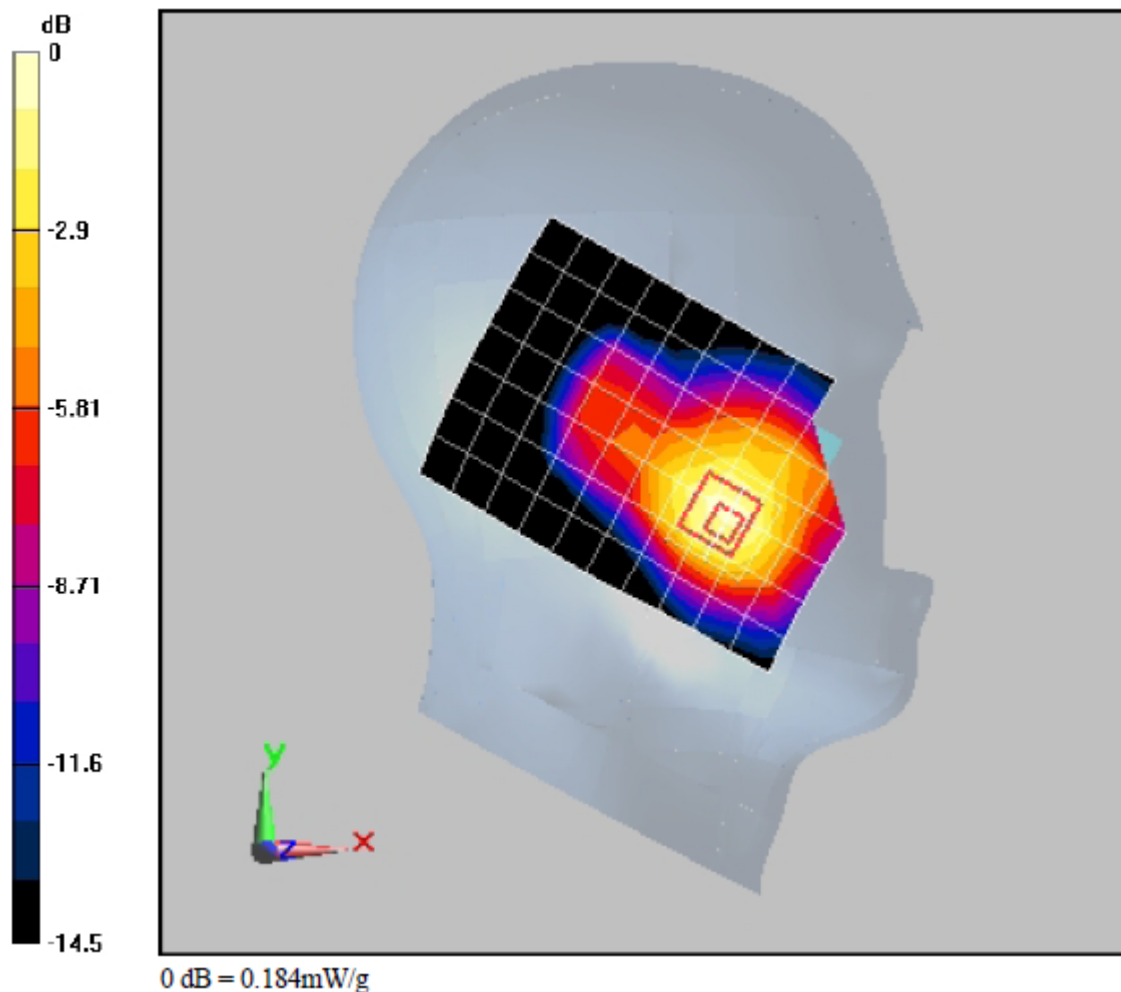
body/Zoom Scan (7x7x7)/Cube 0: Measurement grid: dx=5mm, dy=5mm, dz=5mm

Reference Value = 4.76 V/m; Power Drift = 0.160 dB

Peak SAR (extrapolated) = 0.246 W/kg

SAR(1 g) = 0.168 mW/g; SAR(10 g) = 0.106 mW/g

Maximum value of SAR (measured) = 0.184 mW/g

**Additional information:**

position or distance of DUT to SAM (if not standard head positions) :

ambient temperature: 22.0°C; liquid temperature: 21.5°C

P1528_OET65_EN62209- LeftHandSide tilted 15° –GSM1900**DUT: HUAWEI G6150**

Communication System: PCS 1900; Frequency: 1880 MHz; Duty Cycle: 1:8.3

Medium parameters used: $f = 1880$ MHz; $\sigma = 1.37$ mho/m; $\epsilon_r = 40.1$; $\rho = 1000$ kg/m³

Phantom section: Left Section

DASY5 Configuration:

- Probe: ES3DV3 - SN3168; ConvF(4.99, 4.99, 4.99); Calibrated: 2009-12-18
- Sensor-Surface: 4mm (Mechanical Surface Detection)
- Electronics: DAE4 Sn852; Calibrated: 2009-12-18
- Phantom: SAM2; Type: SAM; Serial: TP-1474
- Measurement SW: DASY5, V5.0 Build 125; SEMCAD X Version 13.2 Build 87

body/Area Scan (8x11x1): Measurement grid: dx=15mm, dy=15mm

Maximum value of SAR (measured) = 0.077 mW/g

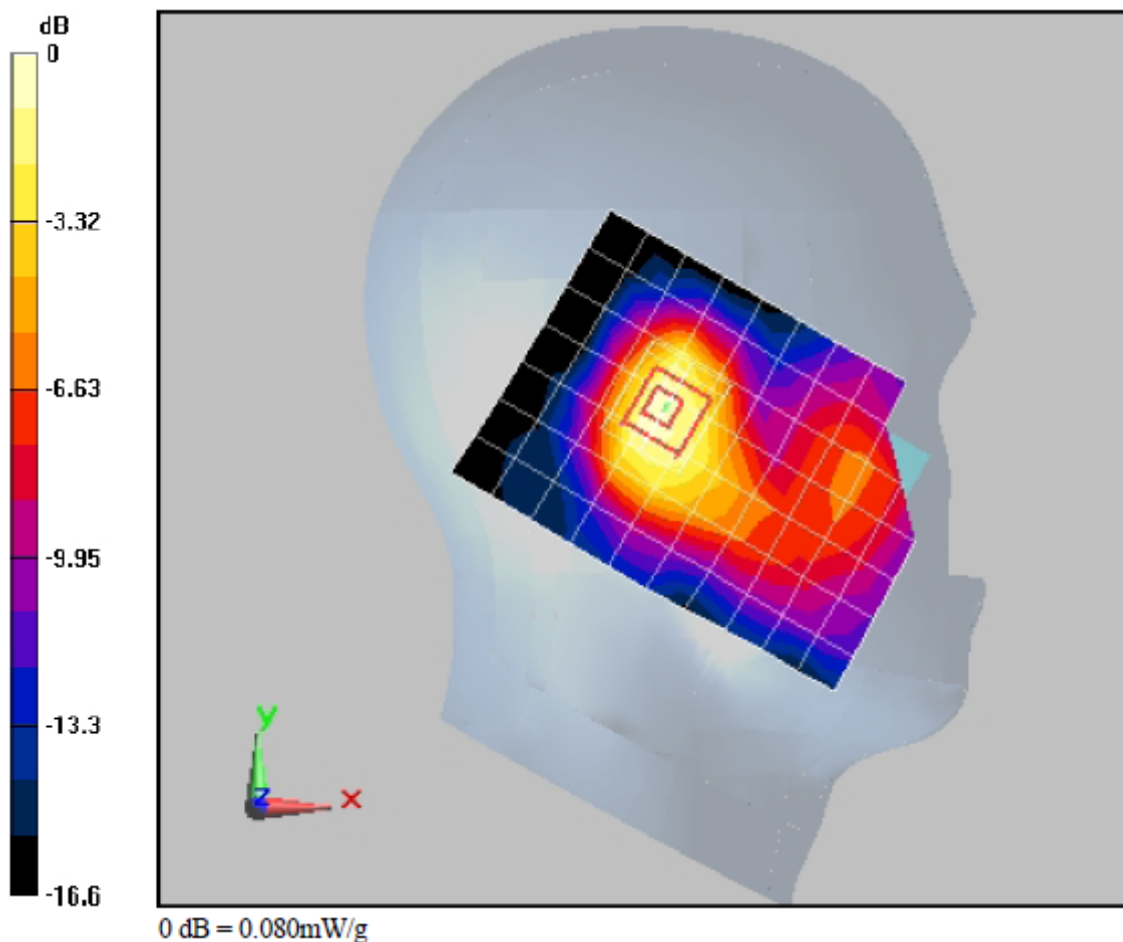
body/Zoom Scan (7x7x7)/Cube 0: Measurement grid: dx=5mm, dy=5mm, dz=5mm

Reference Value = 6.87 V/m; Power Drift = 0.033 dB

Peak SAR (extrapolated) = 0.113 W/kg

SAR(1 g) = 0.074 mW/g; SAR(10 g) = 0.045 mW/g

Maximum value of SAR (measured) = 0.080 mW/g

**Additional information:**

position or distance of DUT to SAM (if not standard head positions) :

ambient temperature: 22.0°C; liquid temperature: 21.5°C

P1528_OET65_EN62209- RightHandSide touched –GSM1900**DUT: HUAWEI G6150**

Communication System: PCS 1900; Frequency: 1880 MHz; Duty Cycle: 1:8.3

Medium parameters used: $f = 1880$ MHz; $\sigma = 1.37$ mho/m; $\epsilon_r = 40.1$; $\rho = 1000$ kg/m³

Phantom section: Right Section

DASY5 Configuration:

- Probe: ES3DV3 - SN3168; ConvF(4.99, 4.99, 4.99); Calibrated: 2009-12-18
- Sensor-Surface: 4mm (Mechanical Surface Detection)
- Electronics: DAE4 Sn852; Calibrated: 2009-12-18
- Phantom: SAM2; Type: SAM; Serial: TP-1474
- Measurement SW: DASY5, V5.0 Build 125; SEMCAD X Version 13.2 Build 87

body/Area Scan (8x11x1): Measurement grid: dx=15mm, dy=15mm

Maximum value of SAR (measured) = 0.117 mW/g

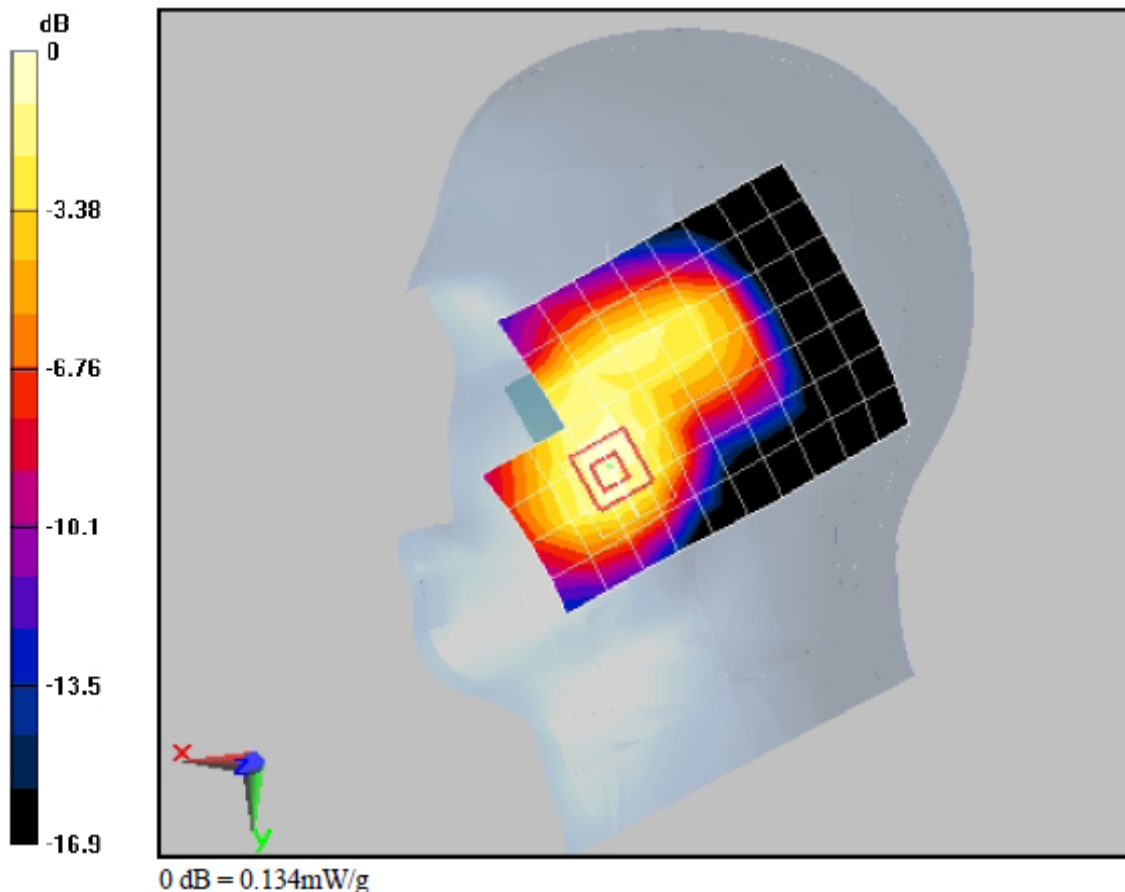
body/Zoom Scan (7x7x7)/Cube 0: Measurement grid: dx=5mm, dy=5mm, dz=5mm

Reference Value = 3.73 V/m; Power Drift = 0.079 dB

Peak SAR (extrapolated) = 0.181 W/kg

SAR(1 g) = 0.124 mW/g; SAR(10 g) = 0.078 mW/g

Maximum value of SAR (measured) = 0.134 mW/g

**Additional information:**

position or distance of DUT to SAM (if not standard head positions) :

ambient temperature: 22.0°C; liquid temperature: 21.5°C

P1528_OET65_EN62209- RightHandSide tilted 15° –GSM1900**DUT: HUAWEI G6150**

Communication System: PCS 1900; Frequency: 1880 MHz; Duty Cycle: 1:8.3

Medium parameters used: $f = 1880$ MHz; $\sigma = 1.37$ mho/m; $\epsilon_r = 40.1$; $\rho = 1000$ kg/m³

Phantom section: Right Section

DASY5 Configuration:

- Probe: ES3DV3 - SN3168; ConvF(4.99, 4.99, 4.99); Calibrated: 2009-12-18
- Sensor-Surface: 4mm (Mechanical Surface Detection)
- Electronics: DAE4 Sn852; Calibrated: 2009-12-18
- Phantom: SAM2; Type: SAM; Serial: TP-1474
- Measurement SW: DASY5, V5.0 Build 125; SEMCAD X Version 13.2 Build 87

body/Area Scan (8x11x1): Measurement grid: dx=15mm, dy=15mm

Maximum value of SAR (measured) = 0.080 mW/g

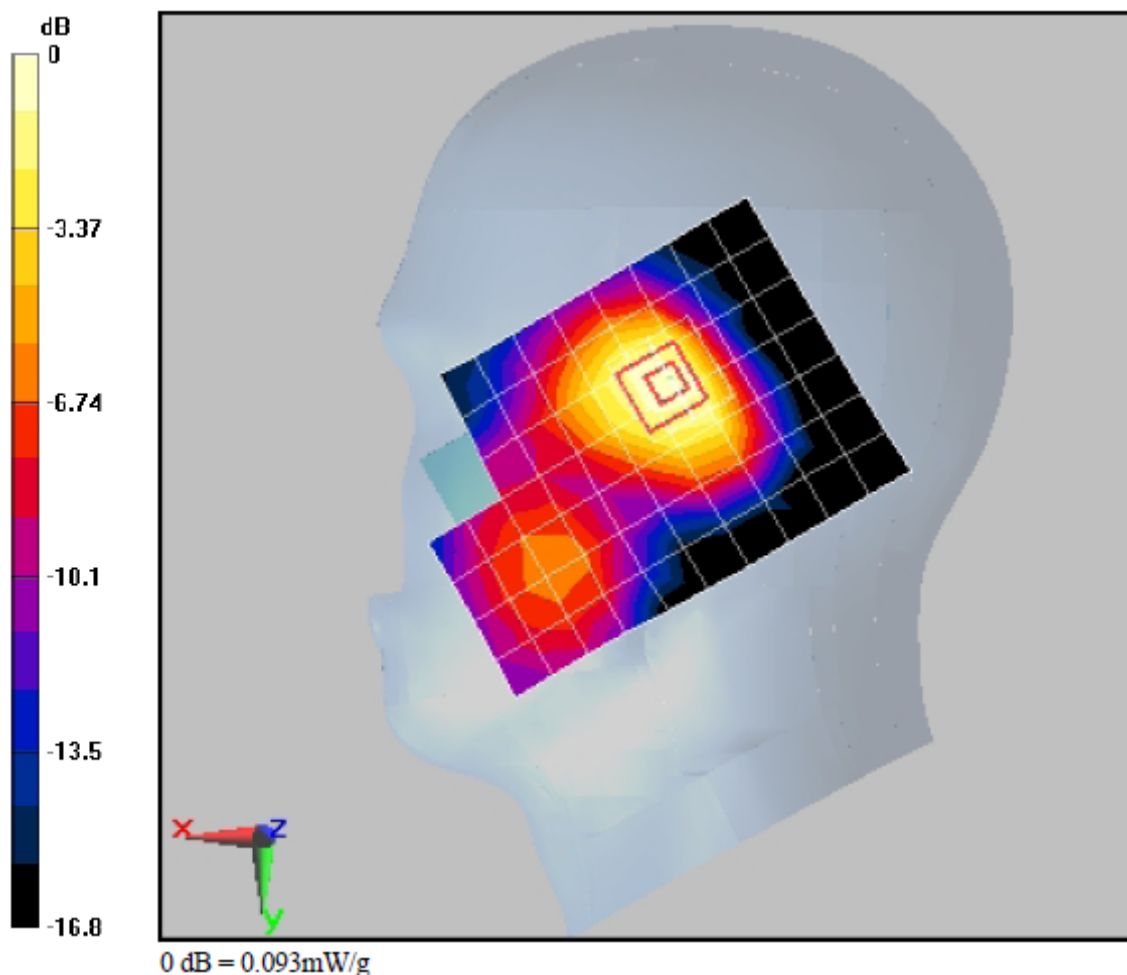
body/Zoom Scan (7x7x7)/Cube 0: Measurement grid: dx=5mm, dy=5mm, dz=5mm

Reference Value = 5.91 V/m; Power Drift = -0.112 dB

Peak SAR (extrapolated) = 0.123 W/kg

SAR(1 g) = 0.087 mW/g; SAR(10 g) = 0.055 mW/g

Maximum value of SAR (measured) = 0.093 mW/g

**Additional information:**

position or distance of DUT to SAM (if not standard head positions) :

ambient temperature: 22.0°C; liquid temperature: 21.5°C

P1528_OET65_EN62209- LeftHandSide touched –GSM1900**DUT: HUAWEI G6150**

Communication System: PCS 1900; Frequency: 1909.8 MHz; Duty Cycle: 1:8.3

Medium parameters used: $f = 1910$ MHz; $\sigma = 1.41$ mho/m; $\epsilon_r = 40.1$; $\rho = 1000$ kg/m³

Phantom section: Left Section

DASY5 Configuration:

- Probe: ES3DV3 - SN3168; ConvF(4.99, 4.99, 4.99); Calibrated: 2009-12-18
- Sensor-Surface: 4mm (Mechanical Surface Detection)
- Electronics: DAE4 Sn852; Calibrated: 2009-12-18
- Phantom: SAM2; Type: SAM; Serial: TP-1474
- Measurement SW: DASY5, V5.0 Build 125; SEMCAD X Version 13.2 Build 87

body/Area Scan (8x11x1): Measurement grid: dx=15mm, dy=15mm

Maximum value of SAR (measured) = 0.182 mW/g

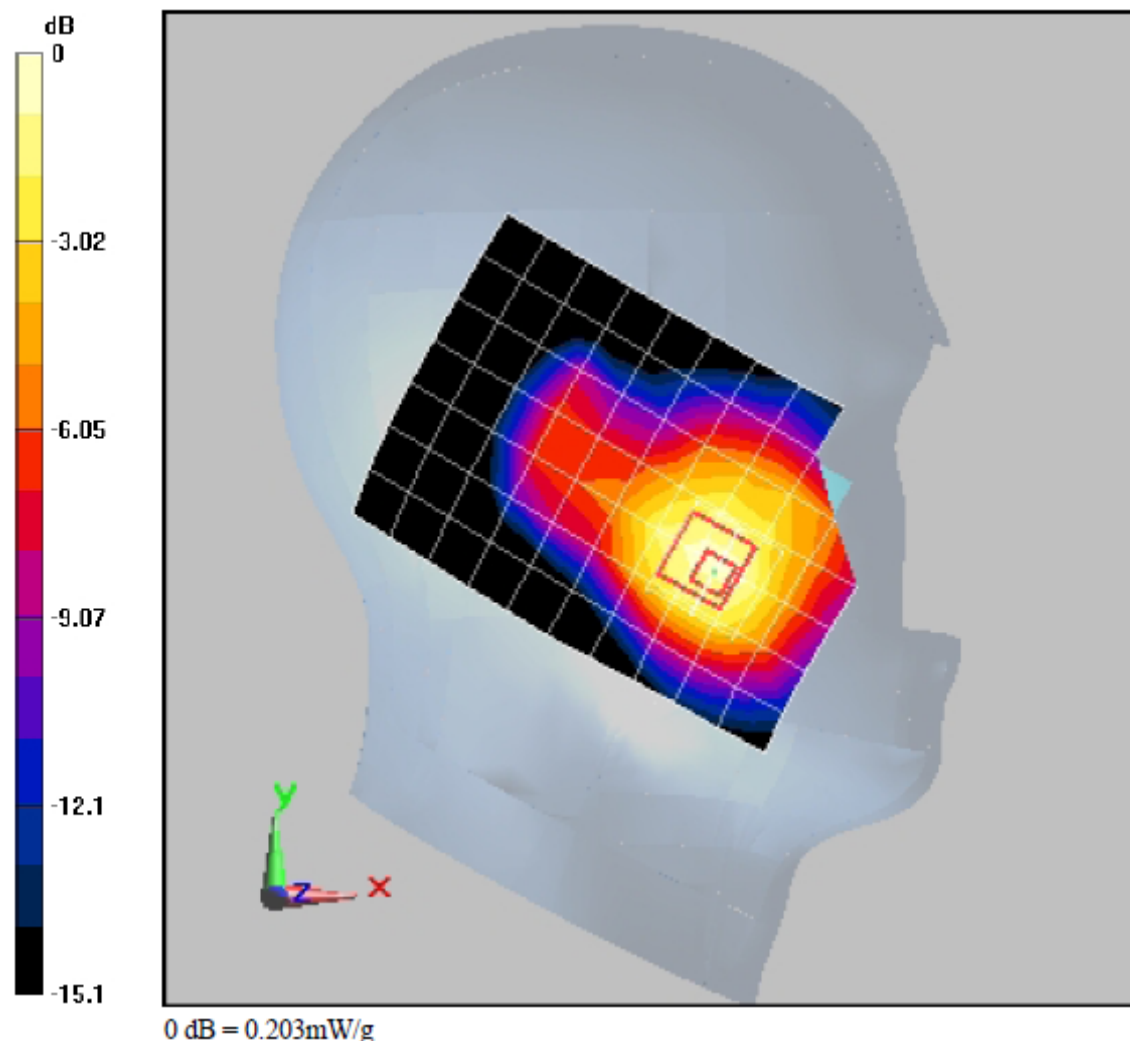
body/Zoom Scan (7x7x7)/Cube 0: Measurement grid: dx=5mm, dy=5mm, dz=5mm

Reference Value = 5.1 V/m; Power Drift = 0.186 dB

Peak SAR (extrapolated) = 0.275 W/kg

SAR(1 g) = 0.187 mW/g; SAR(10 g) = 0.117 mW/g

Maximum value of SAR (measured) = 0.203 mW/g

**Additional information:**

position or distance of DUT to SAM (if not standard head positions) :

ambient temperature: 22.0°C; liquid temperature: 21.5°C

Date/Time: 2010-09-28 04:33:41

P1528_OET65_EN62209- LeftHandSide touched –GSM1900**DUT: HUAWEI G6150**

Communication System: PCS 1900; Frequency: 1850.2 MHz; Duty Cycle: 1:8.3

Medium parameters used (interpolated): $f = 1850.2$ MHz; $\sigma = 1.35$ mho/m; $\epsilon_r = 40.3$; $\rho = 1000$ kg/m³

Phantom section: Left Section

DASY5 Configuration:

- Probe: ES3DV3 - SN3168; ConvF(4.99, 4.99, 4.99); Calibrated: 2009-12-18
- Sensor-Surface: 4mm (Mechanical Surface Detection)
- Electronics: DAE4 Sn852; Calibrated: 2009-12-18
- Phantom: SAM2; Type: SAM; Serial: TP-1474
- Measurement SW: DASY5, V5.0 Build 125; SEMCAD X Version 13.2 Build 87

body/Area Scan (8x11x1): Measurement grid: dx=15mm, dy=15mm[Info: Interpolated medium parameters used for SAR evaluation.](#)

Maximum value of SAR (measured) = 0.187 mW/g

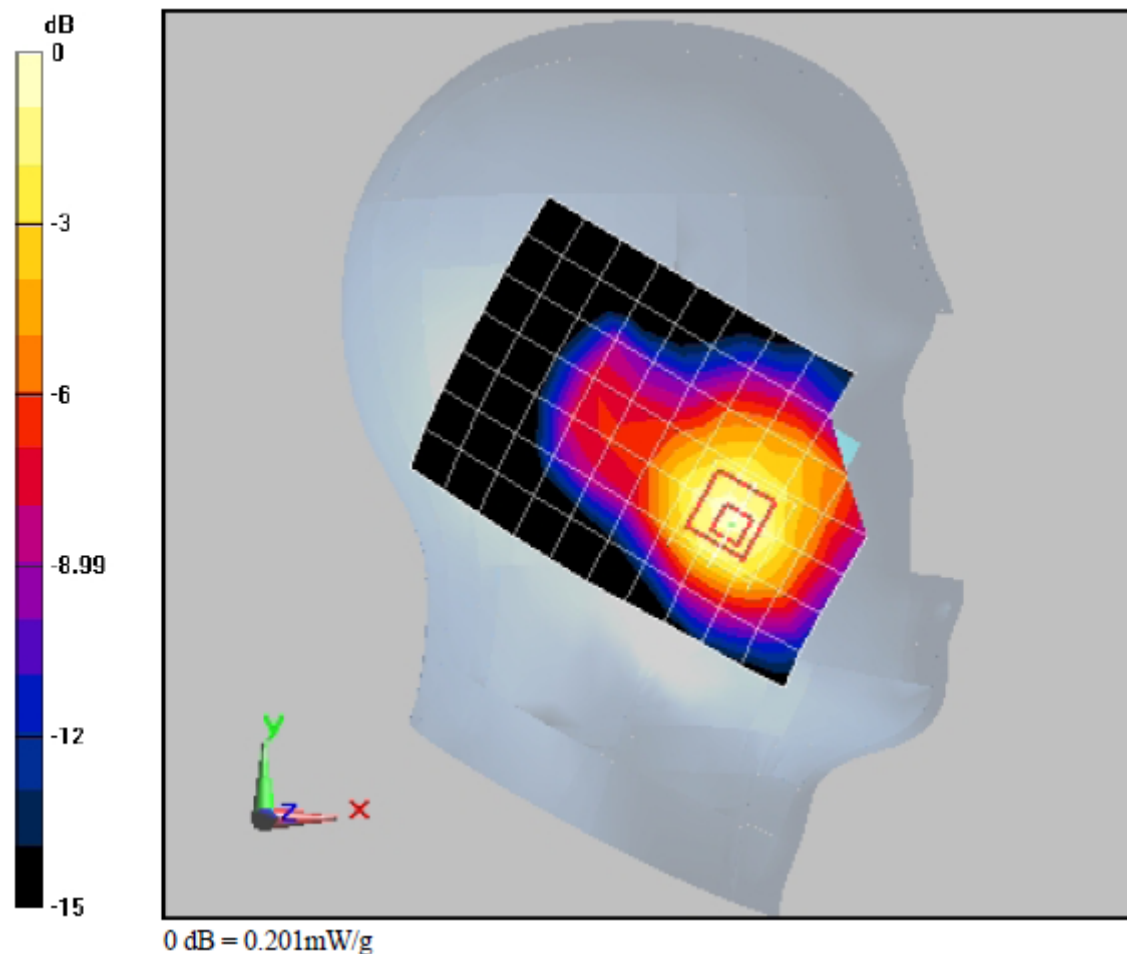
body/Zoom Scan (7x7x7)/Cube 0: Measurement grid: dx=5mm, dy=5mm, dz=5mm

Reference Value = 4.88 V/m; Power Drift = -0.159 dB

Peak SAR (extrapolated) = 0.265 W/kg

SAR(1 g) = 0.186 mW/g; SAR(10 g) = 0.118 mW/g[Info: Interpolated medium parameters used for SAR evaluation.](#)

Maximum value of SAR (measured) = 0.201 mW/g

**Additional information:**

position or distance of DUT to SAM (if not standard head positions) :

ambient temperature: 22.0°C; liquid temperature: 21.5°C

Annex 2.2 PCS 1900 MHz body

Date/Time: 2010-09-19 22:43:27

P1528_OET65_EN62209- GSM1900 GPRS 4TS towards ground**DUT: HUAWEI G6150**

Communication System: PCS 1900; Frequency: 1880 MHz; Duty Cycle: 1:2.1

Medium parameters used: $f = 1880$ MHz; $\sigma = 1.47$ mho/m; $\epsilon_r = 52$; $\rho = 1000$ kg/m³

Phantom section: Flat Section

DASY5 Configuration:

- Probe: ES3DV3 - SN3168; ConvF(4.62, 4.62, 4.62); Calibrated: 2009-12-18
- Sensor-Surface: 4mm (Mechanical Surface Detection)
- Electronics: DAE4 Sn852; Calibrated: 2009-12-18
- Phantom: SAM2; Type: SAM; Serial: TP-1474
- Measurement SW: DASY5, V5.0 Build 125; SEMCAD X Version 13.2 Build 87

body/Area Scan (8x11x1): Measurement grid: dx=15mm, dy=15mm

Maximum value of SAR (measured) = 0.200 mW/g

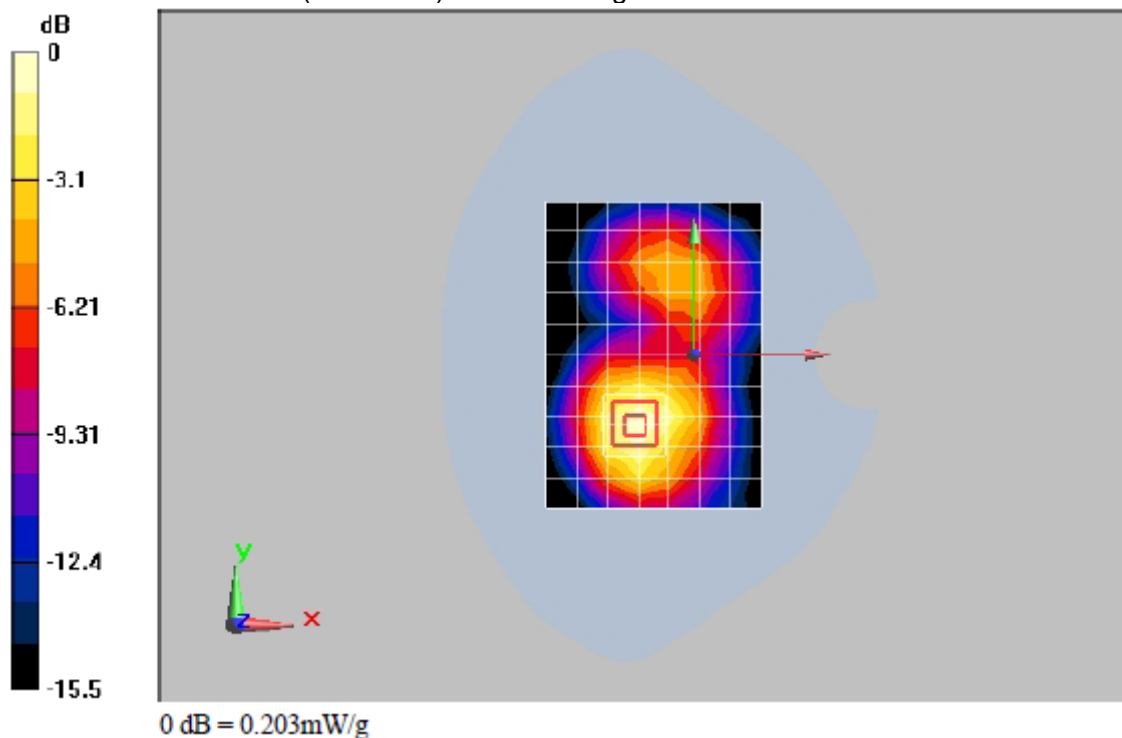
body/Zoom Scan (7x7x7)/Cube 0: Measurement grid: dx=5mm, dy=5mm, dz=5mm

Reference Value = 4.93 V/m; Power Drift = 0.118 dB

Peak SAR (extrapolated) = 0.303 W/kg

SAR(1 g) = 0.186 mW/g; SAR(10 g) = 0.110 mW/g

Maximum value of SAR (measured) = 0.203 mW/g

**Additional information:**

position or distance of DUT to SAM (if not standard head positions) : 15 mm

ambient temperature: 22.0°C; liquid temperature: 21.5°C

P1528_OET65_EN62209- GSM1900 GPRS 3TS towards ground**DUT: HUAWEI G6150**

Communication System: PCS 1900; Frequency: 1880 MHz; Duty Cycle: 1:2.7

Medium parameters used: $f = 1880$ MHz; $\sigma = 1.47$ mho/m; $\epsilon_r = 52$; $\rho = 1000$ kg/m³

Phantom section: Flat Section

DASY5 Configuration:

- Probe: ES3DV3 - SN3168; ConvF(4.62, 4.62, 4.62); Calibrated: 2009-12-18
- Sensor-Surface: 4mm (Mechanical Surface Detection)
- Electronics: DAE4 Sn852; Calibrated: 2009-12-18
- Phantom: SAM2; Type: SAM; Serial: TP-1474
- Measurement SW: DASY5, V5.0 Build 125; SEMCAD X Version 13.2 Build 87

body/Area Scan (8x11x1): Measurement grid: dx=15mm, dy=15mm

Maximum value of SAR (measured) = 0.173 mW/g

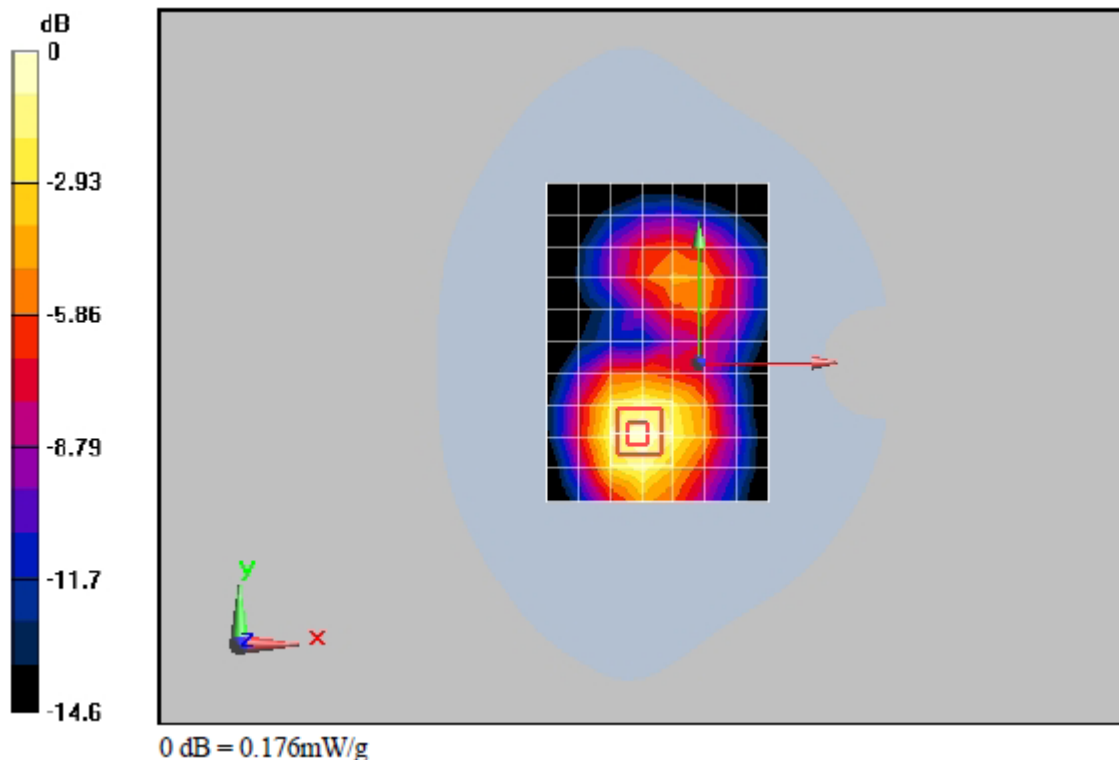
body/Zoom Scan (7x7x7)/Cube 0: Measurement grid: dx=5mm, dy=5mm, dz=5mm

Reference Value = 4.44 V/m; Power Drift = 0.171 dB

Peak SAR (extrapolated) = 0.265 W/kg

SAR(1 g) = 0.161 mW/g; SAR(10 g) = 0.096 mW/g

Maximum value of SAR (measured) = 0.176 mW/g

**Additional information:**

position or distance of DUT to SAM (if not standard head positions) : 15 mm

ambient temperature: 22.0°C; liquid temperature: 21.5°C

P1528_OET65_EN62209- GSM1900 GPRS 2TS towards ground**DUT: HUAWEI G6150**

Communication System: PCS 1900; Frequency: 1880 MHz; Duty Cycle: 1:4.1

Medium parameters used: $f = 1880$ MHz; $\sigma = 1.47$ mho/m; $\epsilon_r = 52$; $\rho = 1000$ kg/m³

Phantom section: Flat Section

DASY5 Configuration:

- Probe: ES3DV3 - SN3168; ConvF(4.62, 4.62, 4.62); Calibrated: 2009-12-18
- Sensor-Surface: 4mm (Mechanical Surface Detection)
- Electronics: DAE4 Sn852; Calibrated: 2009-12-18
- Phantom: SAM2; Type: SAM; Serial: TP-1474
- Measurement SW: DASY5, V5.0 Build 125; SEMCAD X Version 13.2 Build 87

body/Area Scan (8x11x1): Measurement grid: dx=15mm, dy=15mm

Maximum value of SAR (measured) = 0.179 mW/g

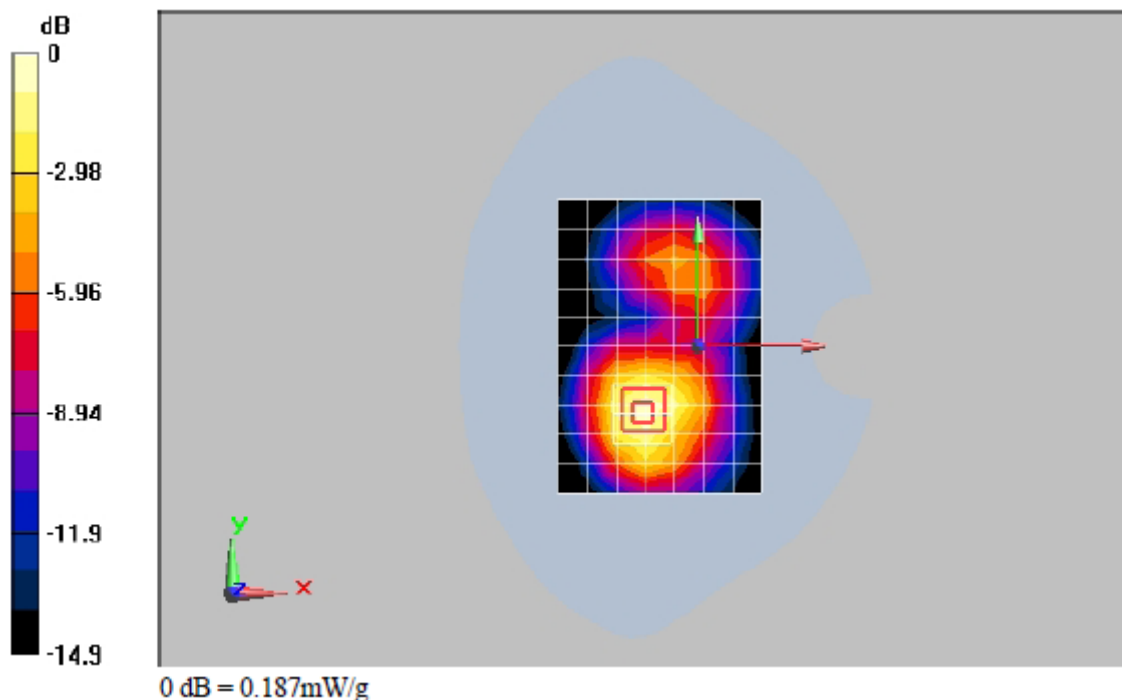
body/Zoom Scan (7x7x7)/Cube 0: Measurement grid: dx=5mm, dy=5mm, dz=5mm

Reference Value = 4.58 V/m; Power Drift = 0.127 dB

Peak SAR (extrapolated) = 0.283 W/kg

SAR(1 g) = 0.170 mW/g; SAR(10 g) = 0.101 mW/g

Maximum value of SAR (measured) = 0.187 mW/g

**Additional information:**

position or distance of DUT to SAM (if not standard head positions) : 15 mm

ambient temperature: 22.0°C; liquid temperature: 21.5°C

P1528_OET65_EN62209- GSM1900 GPRS 1TS towards ground**DUT: HUAWEI G6150**

Communication System: PCS 1900; Frequency: 1880 MHz; Duty Cycle: 1:8.3

Medium parameters used: $f = 1880$ MHz; $\sigma = 1.47$ mho/m; $\epsilon_r = 52$; $\rho = 1000$ kg/m³

Phantom section: Flat Section

DASY5 Configuration:

- Probe: ES3DV3 - SN3168; ConvF(4.62, 4.62, 4.62); Calibrated: 2009-12-18
- Sensor-Surface: 4mm (Mechanical Surface Detection)
- Electronics: DAE4 Sn852; Calibrated: 2009-12-18
- Phantom: SAM2; Type: SAM; Serial: TP-1474
- Measurement SW: DASY5, V5.0 Build 125; SEMCAD X Version 13.2 Build 87

body/Area Scan (8x11x1): Measurement grid: dx=15mm, dy=15mm

Maximum value of SAR (measured) = 0.140 mW/g

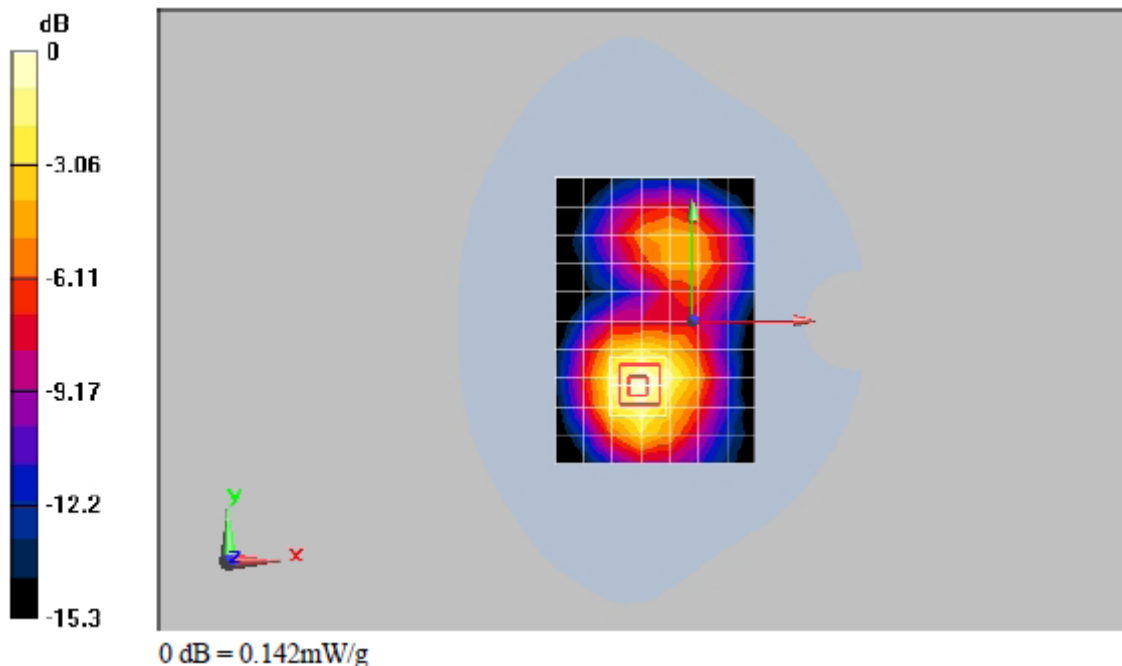
body/Zoom Scan (7x7x7)/Cube 0: Measurement grid: dx=5mm, dy=5mm, dz=5mm

Reference Value = 3.99 V/m; Power Drift = -0.138 dB

Peak SAR (extrapolated) = 0.211 W/kg

SAR(1 g) = 0.130 mW/g; SAR(10 g) = 0.077 mW/g

Maximum value of SAR (measured) = 0.142 mW/g

**Additional information:**

position or distance of DUT to SAM (if not standard head positions) : 15 mm

ambient temperature: 22.0°C; liquid temperature: 21.5°C

P1528_OET65_EN62209- GSM1900 GPRS 4TS towards phantom**DUT: HUAWEI G6150**

Communication System: PCS 1900; Frequency: 1880 MHz; Duty Cycle: 1:2.1

Medium parameters used: $f = 1880$ MHz; $\sigma = 1.47$ mho/m; $\epsilon_r = 52$; $\rho = 1000$ kg/m³

Phantom section: Flat Section

DASY5 Configuration:

- Probe: ES3DV3 - SN3168; ConvF(4.62, 4.62, 4.62); Calibrated: 2009-12-18
- Sensor-Surface: 4mm (Mechanical Surface Detection)
- Electronics: DAE4 Sn852; Calibrated: 2009-12-18
- Phantom: SAM2; Type: SAM; Serial: TP-1474
- Measurement SW: DASY5, V5.0 Build 125; SEMCAD X Version 13.2 Build 87

body/Area Scan (8x11x1): Measurement grid: dx=15mm, dy=15mm

Maximum value of SAR (measured) = 0.177 mW/g

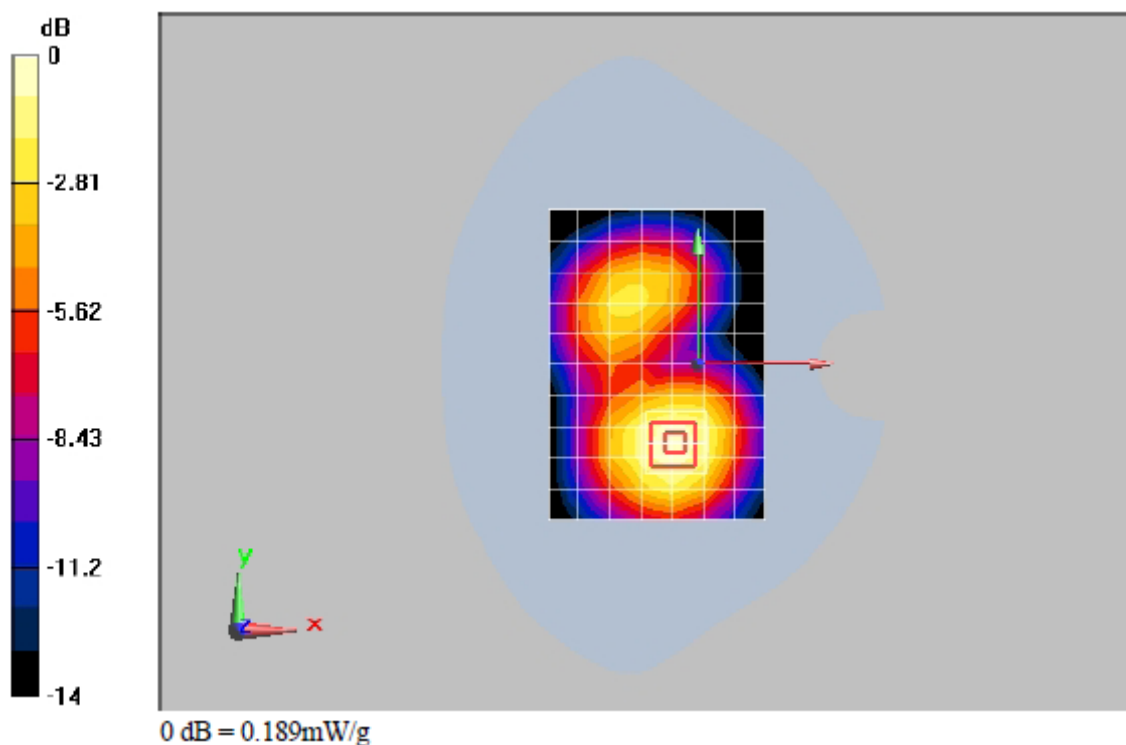
body/Zoom Scan (7x7x7)/Cube 0: Measurement grid: dx=5mm, dy=5mm, dz=5mm

Reference Value = 4.71 V/m; Power Drift = 0.133 dB

Peak SAR (extrapolated) = 0.273 W/kg

SAR(1 g) = 0.175 mW/g; SAR(10 g) = 0.109 mW/g

Maximum value of SAR (measured) = 0.189 mW/g

**Additional information:**

position or distance of DUT to SAM (if not standard head positions) : 15 mm

ambient temperature: 22.0°C; liquid temperature: 21.5°C

P1528_OET65_EN62209- GSM1900 GPRS 4TS towards ground

DUT: HUAWEI G6150

Communication System: PCS 1900; Frequency: 1909.8 MHz; Duty Cycle: 1:2.1

Medium parameters used: $f = 1910$ MHz; $\sigma = 1.5$ mho/m; $\epsilon_r = 51.8$; $\rho = 1000$ kg/m³

Phantom section: Flat Section

DASY5 Configuration:

- Probe: ES3DV3 - SN3168; ConvF(4.62, 4.62, 4.62); Calibrated: 2009-12-18
- Sensor-Surface: 4mm (Mechanical Surface Detection)
- Electronics: DAE4 Sn852; Calibrated: 2009-12-18
- Phantom: SAM2; Type: SAM; Serial: TP-1474
- Measurement SW: DASY5, V5.0 Build 125; SEMCAD X Version 13.2 Build 87

body/Area Scan (8x11x1): Measurement grid: dx=15mm, dy=15mm

Maximum value of SAR (measured) = 0.219 mW/g

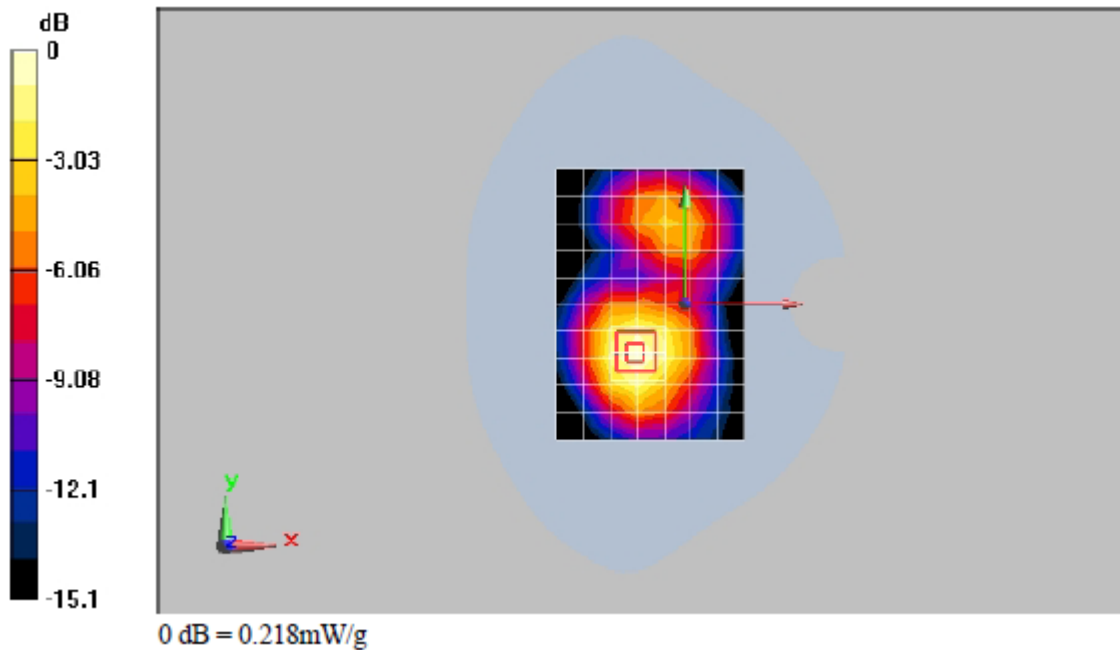
body/Zoom Scan (7x7x7)/Cube 0: Measurement grid: dx=5mm, dy=5mm, dz=5mm

Reference Value = 6.4 V/m; Power Drift = -0.112 dB

Peak SAR (extrapolated) = 0.328 W/kg

SAR(1 g) = 0.201 mW/g; SAR(10 g) = 0.119 mW/g

Maximum value of SAR (measured) = 0.218 mW/g



Additional information:

position or distance of DUT to SAM (if not standard head positions) : 15 mm

ambient temperature: 22.0°C; liquid temperature: 21.5°C

P1528_OET65_EN62209- GSM1900 GPRS 4TS towards ground**DUT: HUAWEI G6150**

Communication System: PCS 1900; Frequency: 1850.2 MHz; Duty Cycle: 1:2.1

Medium parameters used (interpolated): $f = 1850.2$ MHz; $\sigma = 1.44$ mho/m; $\epsilon_r = 52$; $\rho = 1000$ kg/m³

Phantom section: Flat Section

DASY5 Configuration:

- Probe: ES3DV3 - SN3168; ConvF(4.62, 4.62, 4.62); Calibrated: 2009-12-18
- Sensor-Surface: 4mm (Mechanical Surface Detection)
- Electronics: DAE4 Sn852; Calibrated: 2009-12-18
- Phantom: SAM2; Type: SAM; Serial: TP-1474
- Measurement SW: DASY5, V5.0 Build 125; SEMCAD X Version 13.2 Build 87

body/Area Scan (8x11x1): Measurement grid: dx=15mm, dy=15mm[Info: Interpolated medium parameters used for SAR evaluation.](#)

Maximum value of SAR (measured) = 0.236 mW/g

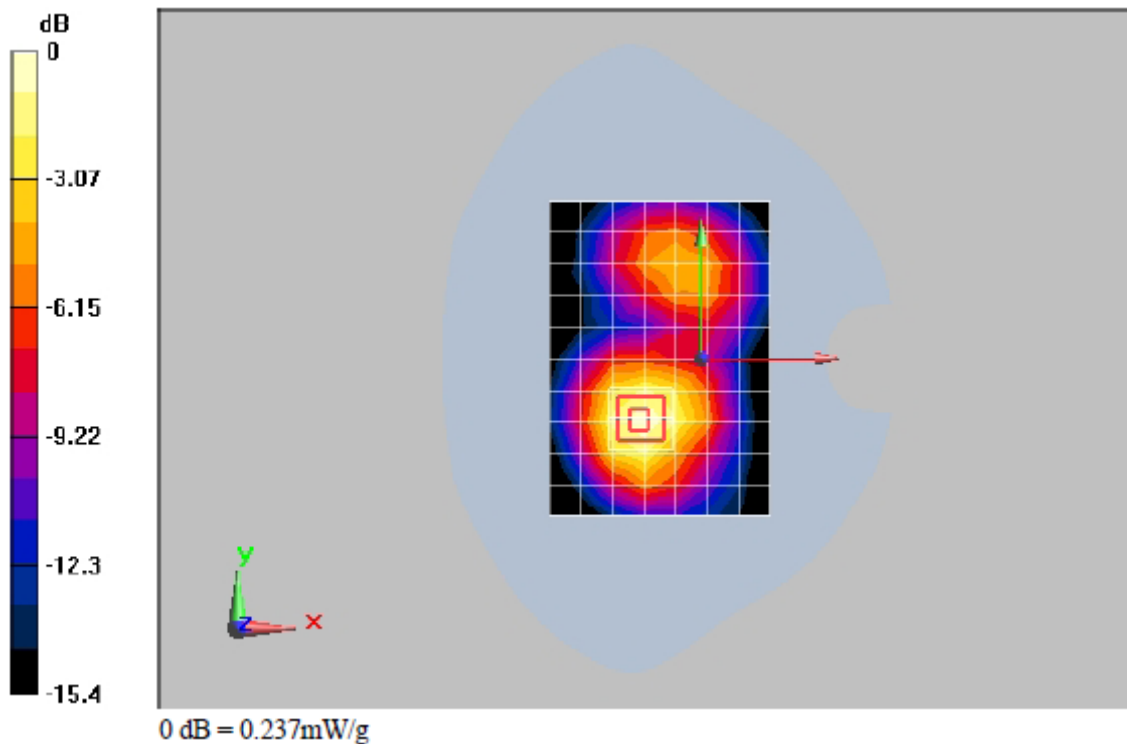
body/Zoom Scan (7x7x7)/Cube 0: Measurement grid: dx=5mm, dy=5mm, dz=5mm

Reference Value = 5.74 V/m; Power Drift = 0.142 dB

Peak SAR (extrapolated) = 0.356 W/kg

SAR(1 g) = 0.218 mW/g; SAR(10 g) = 0.129 mW/g[Info: Interpolated medium parameters used for SAR evaluation.](#)

Maximum value of SAR (measured) = 0.237 mW/g

**Additional information:**

position or distance of DUT to SAM (if not standard head positions) : 15 mm

ambient temperature: 22.0°C; liquid temperature: 21.5°C

P1528_OET65_EN62209- GSM1900 towards ground with Headset**DUT: HUAWEI G6150**

Communication System: PCS 1900; Frequency: 1850.2 MHz; Duty Cycle: 1:8.3

Medium parameters used (interpolated): $f = 1850.2$ MHz; $\sigma = 1.44$ mho/m; $\epsilon_r = 52$; $\rho = 1000$ kg/m³

Phantom section: Flat Section

DASY5 Configuration:

- Probe: ES3DV3 - SN3168; ConvF(4.62, 4.62, 4.62); Calibrated: 2009-12-18
- Sensor-Surface: 4mm (Mechanical Surface Detection)
- Electronics: DAE4 Sn852; Calibrated: 2009-12-18
- Phantom: SAM2; Type: SAM; Serial: TP-1474
- Measurement SW: DASY5, V5.0 Build 125; SEMCAD X Version 13.2 Build 87

body/Area Scan (8x11x1): Measurement grid: dx=15mm, dy=15mm[Info: Interpolated medium parameters used for SAR evaluation.](#)

Maximum value of SAR (measured) = 0.102 mW/g

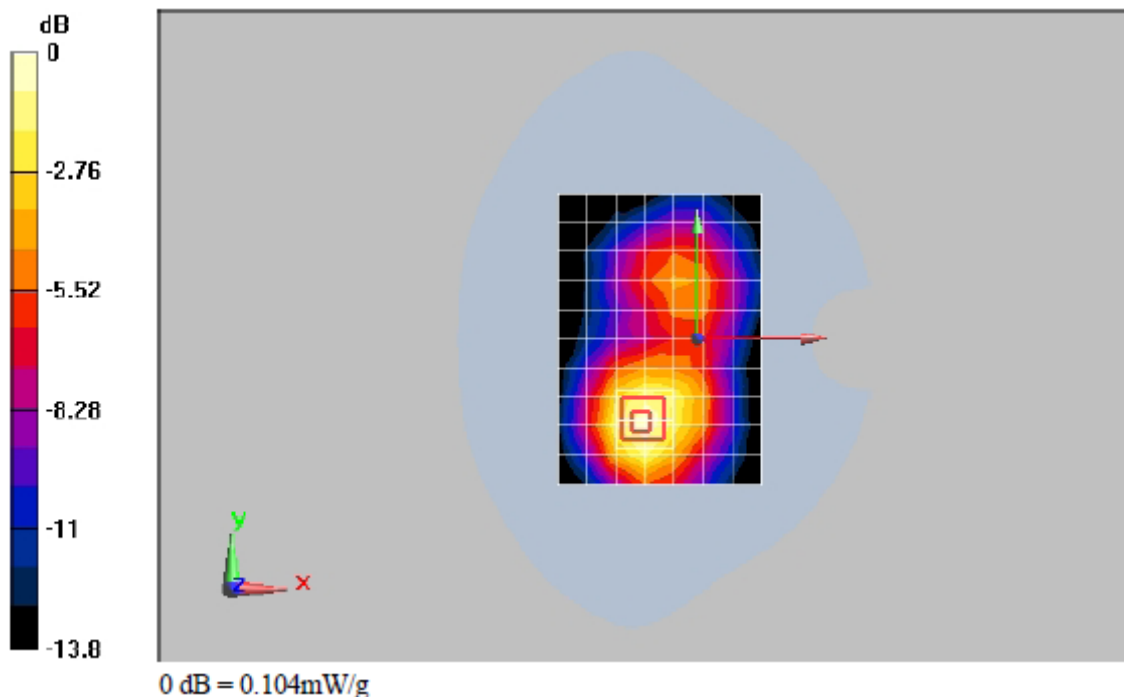
body/Zoom Scan (7x7x7)/Cube 0: Measurement grid: dx=5mm, dy=5mm, dz=5mm

Reference Value = 3.9 V/m; Power Drift = 0.00357 dB

Peak SAR (extrapolated) = 0.157 W/kg

SAR(1 g) = 0.095 mW/g; SAR(10 g) = 0.057 mW/g[Info: Interpolated medium parameters used for SAR evaluation.](#)

Maximum value of SAR (measured) = 0.104 mW/g

**Additional information:**

position or distance of DUT to SAM (if not standard head positions) : 15 mm

ambient temperature: 22.0°C; liquid temperature: 21.5°C

P1528_OET65_EN62209- GSM1900 towards ground with Bluetooth Headset**DUT: HUAWEI G6150**

Communication System: PCS 1900; Frequency: 1850.2 MHz; Duty Cycle: 1:8.3

Medium parameters used (interpolated): $f = 1850.2$ MHz; $\sigma = 1.44$ mho/m; $\epsilon_r = 52$; $\rho = 1000$ kg/m³

Phantom section: Flat Section

DASY5 Configuration:

- Probe: ES3DV3 - SN3168; ConvF(4.62, 4.62, 4.62); Calibrated: 2009-12-18
- Sensor-Surface: 4mm (Mechanical Surface Detection)
- Electronics: DAE4 Sn852; Calibrated: 2009-12-18
- Phantom: SAM2; Type: SAM; Serial: TP-1474
- Measurement SW: DASY5, V5.0 Build 125; SEMCAD X Version 13.2 Build 87

body/Area Scan (8x11x1): Measurement grid: dx=15mm, dy=15mm[Info: Interpolated medium parameters used for SAR evaluation.](#)

Maximum value of SAR (measured) = 0.114 mW/g

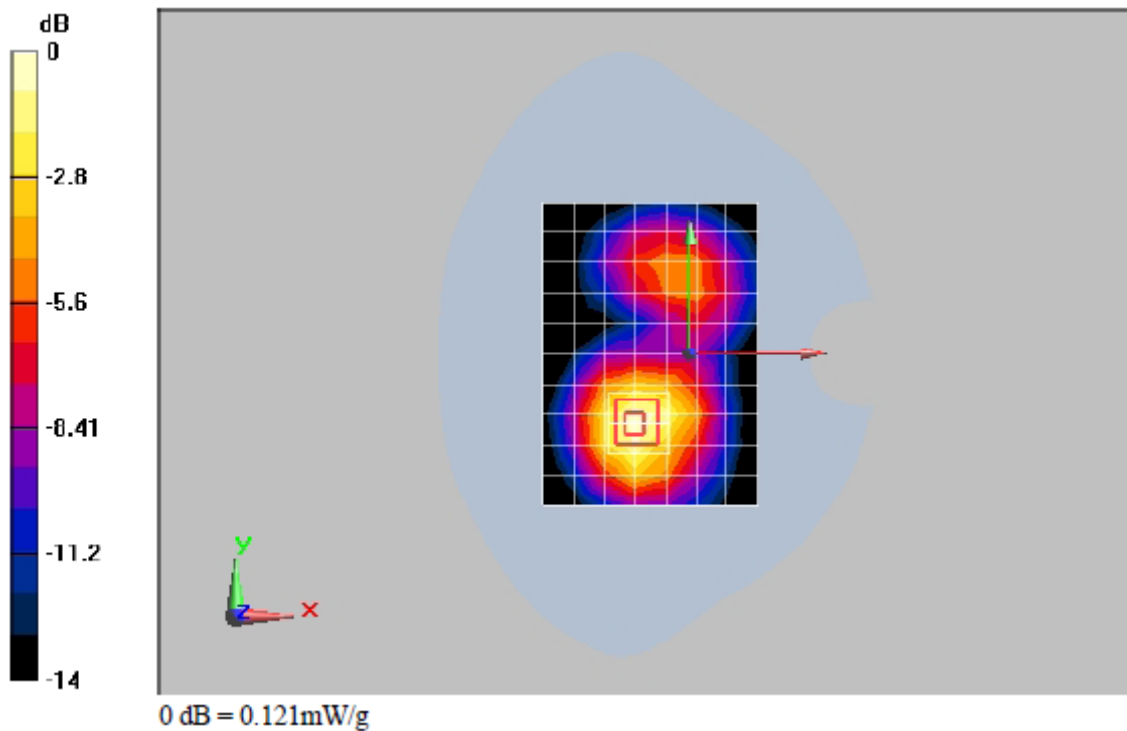
body/Zoom Scan (7x7x7)/Cube 0: Measurement grid: dx=5mm, dy=5mm, dz=5mm

Reference Value = 3.34 V/m; Power Drift = 0.114 dB

Peak SAR (extrapolated) = 0.180 W/kg

SAR(1 g) = 0.110 mW/g; SAR(10 g) = 0.065 mW/g[Info: Interpolated medium parameters used for SAR evaluation.](#)

Maximum value of SAR (measured) = 0.121 mW/g

**Additional information:**

position or distance of DUT to SAM (if not standard head positions) : 15 mm

ambient temperature: 22.0°C; liquid temperature: 21.5°C

Annex 2.3 GSM 850 MHz head

Date/Time: 2010-09-26 22:40:48

P1528_OET65_EN62209- LeftHandSide touched –GSM850**DUT: HUAWEI G6150**

Communication System: GSM 850; Frequency: 837 MHz; Duty Cycle: 1:8.3

Medium parameters used (interpolated): $f = 837$ MHz; $\sigma = 0.895$ mho/m; $\epsilon_r = 42.1$; $\rho = 1000$ kg/m³

Phantom section: Left Section

DASY5 Configuration:

- Probe: ES3DV3 - SN3168; ConvF(6.06, 6.06, 6.06); Calibrated: 2009-12-18
- Sensor-Surface: 4mm (Mechanical Surface Detection)
- Electronics: DAE4 Sn852; Calibrated: 2009-12-18
- Phantom: SAM1; Type: SAM; Serial: TP-1475
- Measurement SW: DASY5, V5.0 Build 125; SEMCAD X Version 13.2 Build 87

body/Area Scan (8x11x1): Measurement grid: dx=15mm, dy=15mm[Info: Interpolated medium parameters used for SAR evaluation.](#)

Maximum value of SAR (measured) = 0.539 mW/g

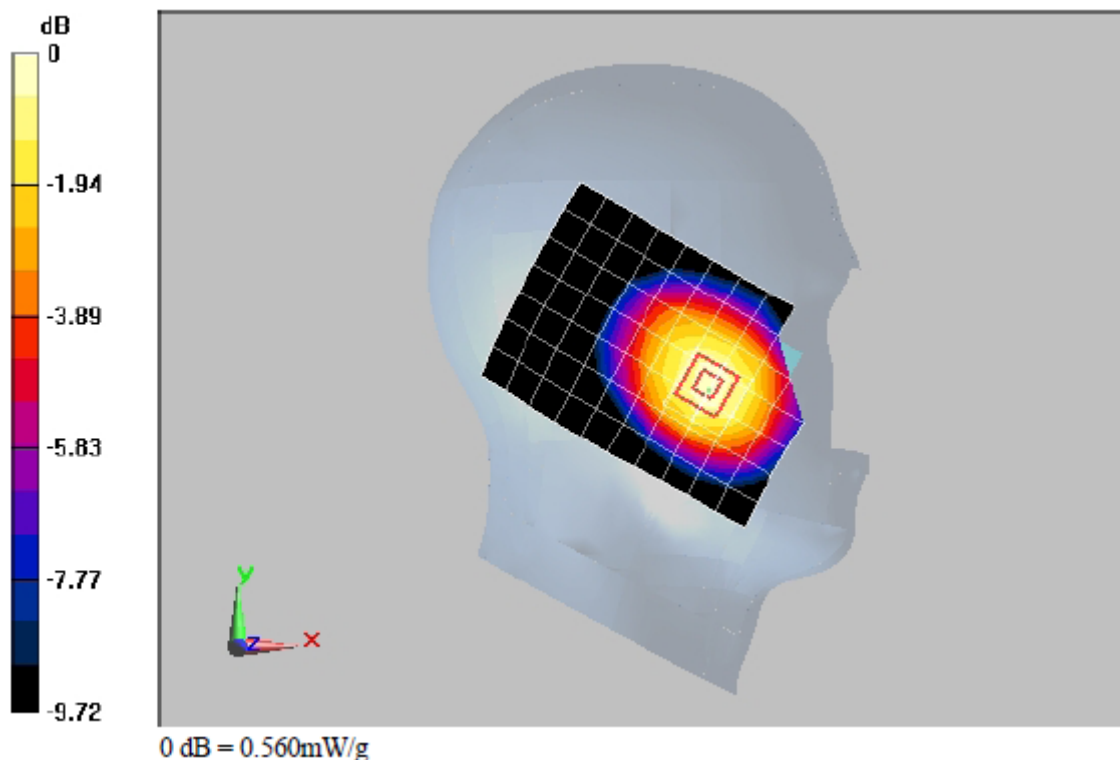
body/Zoom Scan (7x7x7)/Cube 0: Measurement grid: dx=5mm, dy=5mm, dz=5mm

Reference Value = 8.94 V/m; Power Drift = -0.033 dB

Peak SAR (extrapolated) = 0.648 W/kg

SAR(1 g) = 0.532 mW/g; SAR(10 g) = 0.397 mW/g[Info: Interpolated medium parameters used for SAR evaluation.](#)

Maximum value of SAR (measured) = 0.560 mW/g

**Additional information:**

position or distance of DUT to SAM (if not standard head positions) :

ambient temperature: 22.0°C; liquid temperature: 21.5°C

P1528_OET65_EN62209- LeftHandSide tilted 15° –GSM850**DUT: HUAWEI G6150**

Communication System: GSM 850; Frequency: 837 MHz; Duty Cycle: 1:8.3

Medium parameters used (interpolated): $f = 837$ MHz; $\sigma = 0.895$ mho/m; $\epsilon_r = 42.1$; $\rho = 1000$ kg/m³

Phantom section: Left Section

DASY5 Configuration:

- Probe: ES3DV3 - SN3168; ConvF(6.06, 6.06, 6.06); Calibrated: 2009-12-18
- Sensor-Surface: 4mm (Mechanical Surface Detection)
- Electronics: DAE4 Sn852; Calibrated: 2009-12-18
- Phantom: SAM1; Type: SAM; Serial: TP-1475
- Measurement SW: DASY5, V5.0 Build 125; SEMCAD X Version 13.2 Build 87

body/Area Scan (8x11x1): Measurement grid: dx=15mm, dy=15mm[Info: Interpolated medium parameters used for SAR evaluation.](#)

Maximum value of SAR (measured) = 0.298 mW/g

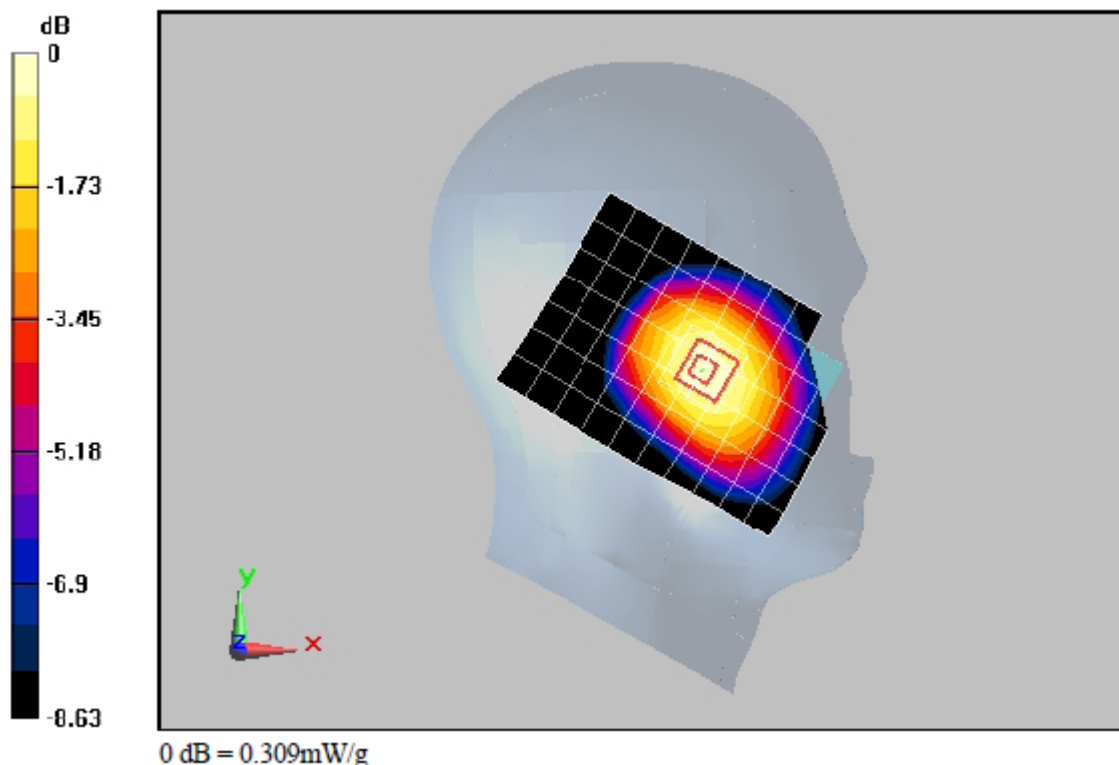
body/Zoom Scan (7x7x7)/Cube 0: Measurement grid: dx=5mm, dy=5mm, dz=5mm

Reference Value = 12.6 V/m; Power Drift = -0.00589 dB

Peak SAR (extrapolated) = 0.356 W/kg

SAR(1 g) = 0.293 mW/g; SAR(10 g) = 0.225 mW/g[Info: Interpolated medium parameters used for SAR evaluation.](#)

Maximum value of SAR (measured) = 0.309 mW/g

**Additional information:**

position or distance of DUT to SAM (if not standard head positions) :

ambient temperature: 22.0°C; liquid temperature: 21.5°C

Date/Time: 2010-09-27 00:07:31

P1528_OET65_EN62209- RightHandSide touched –GSM850**DUT: HUAWEI G6150**

Communication System: GSM 850; Frequency: 837 MHz; Duty Cycle: 1:8.3

Medium parameters used (interpolated): $f = 837$ MHz; $\sigma = 0.895$ mho/m; $\epsilon_r = 42.1$; $\rho = 1000$ kg/m³

Phantom section: Right Section

DASY5 Configuration:

- Probe: ES3DV3 - SN3168; ConvF(6.06, 6.06, 6.06); Calibrated: 2009-12-18
- Sensor-Surface: 4mm (Mechanical Surface Detection)
- Electronics: DAE4 Sn852; Calibrated: 2009-12-18
- Phantom: SAM1; Type: SAM; Serial: TP-1475
- Measurement SW: DASY5, V5.0 Build 125; SEMCAD X Version 13.2 Build 87

body/Area Scan (8x11x1): Measurement grid: dx=15mm, dy=15mm[Info: Interpolated medium parameters used for SAR evaluation.](#)

Maximum value of SAR (measured) = 0.476 mW/g

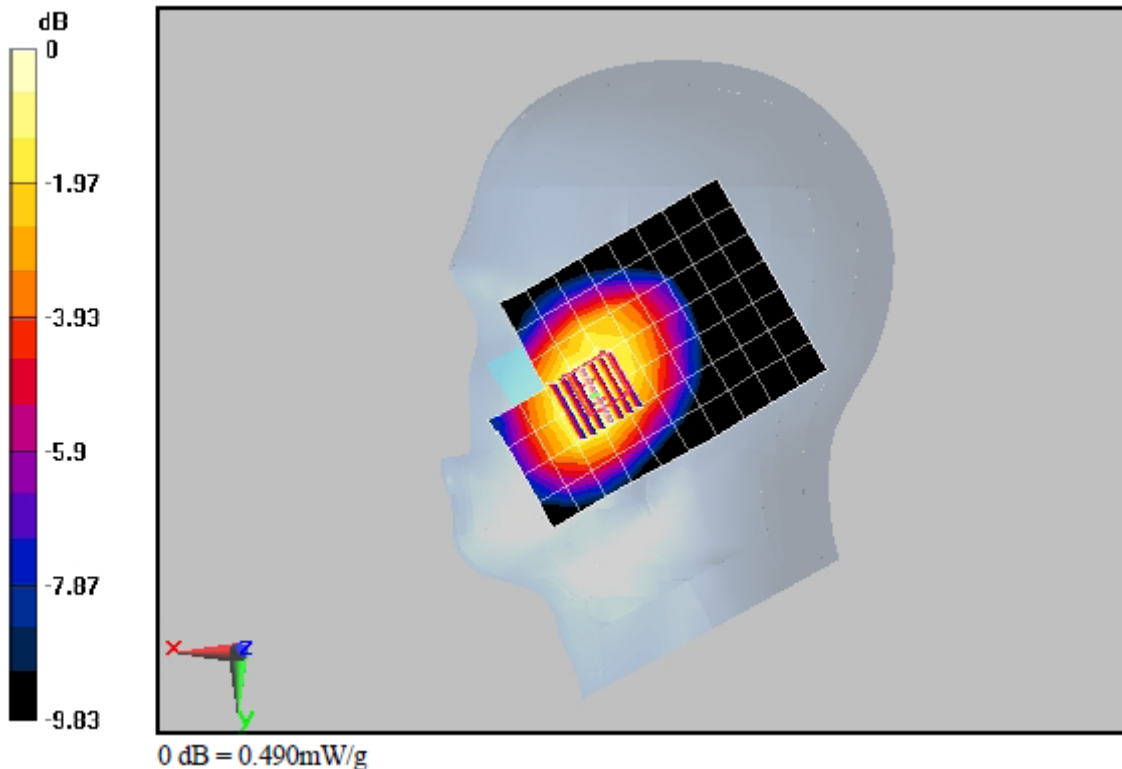
body/Zoom Scan (7x7x7)/Cube 0: Measurement grid: dx=5mm, dy=5mm, dz=5mm

Reference Value = 8.53 V/m; Power Drift = -0.037 dB

Peak SAR (extrapolated) = 0.600 W/kg

SAR(1 g) = 0.463 mW/g; SAR(10 g) = 0.337 mW/g[Info: Interpolated medium parameters used for SAR evaluation.](#)

Maximum value of SAR (measured) = 0.490 mW/g

**Additional information:**

position or distance of DUT to SAM (if not standard head positions) :

ambient temperature: 22.0°C; liquid temperature: 21.5°C

P1528_OET65_EN62209- RightHandSide tilted 15° –GSM850**DUT: HUAWEI G6150**

Communication System: GSM 850; Frequency: 837 MHz; Duty Cycle: 1:8.3

Medium parameters used (interpolated): $f = 837$ MHz; $\sigma = 0.895$ mho/m; $\epsilon_r = 42.1$; $\rho = 1000$ kg/m³

Phantom section: Right Section

DASY5 Configuration:

- Probe: ES3DV3 - SN3168; ConvF(6.06, 6.06, 6.06); Calibrated: 2009-12-18
- Sensor-Surface: 4mm (Mechanical Surface Detection)
- Electronics: DAE4 Sn852; Calibrated: 2009-12-18
- Phantom: SAM1; Type: SAM; Serial: TP-1475
- Measurement SW: DASY5, V5.0 Build 125; SEMCAD X Version 13.2 Build 87

body/Area Scan (8x11x1): Measurement grid: dx=15mm, dy=15mm[Info: Interpolated medium parameters used for SAR evaluation.](#)

Maximum value of SAR (measured) = 0.285 mW/g

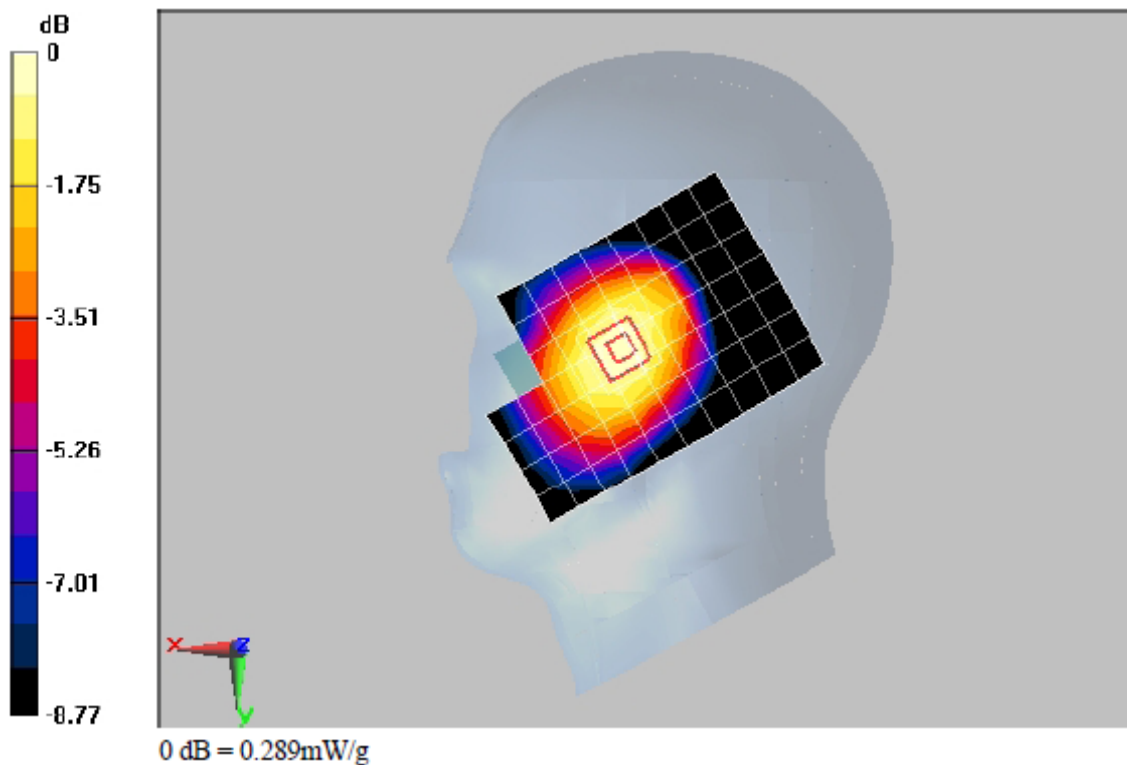
body/Zoom Scan (7x7x7)/Cube 0: Measurement grid: dx=5mm, dy=5mm, dz=5mm

Reference Value = 11.2 V/m; Power Drift = -0.025 dB

Peak SAR (extrapolated) = 0.330 W/kg

SAR(1 g) = 0.275 mW/g; SAR(10 g) = 0.212 mW/g[Info: Interpolated medium parameters used for SAR evaluation.](#)

Maximum value of SAR (measured) = 0.289 mW/g

**Additional information:**

position or distance of DUT to SAM (if not standard head positions) :

ambient temperature: 22.0°C; liquid temperature: 21.5°C