



Accredited testing laboratory

CNAS Registration number: L0310

**Report On SAR Test of
CDMA 1X Digital Mobile Telephone
M/N: HUAWEI M580**

Test report no.	: SYBH(Z-SAR)005022011-2
Type identification	: HUAWEI M580
FCC ID	: QISC5870
Test specification	: IEEE 1528-2003
	: ANSI C95.1-1999
	: RSS-102 issue 4 (2010)
	: OET Bulletin 65 Supplement C

Table of Contents

1	General Information	3
1.1	Notes	3
1.1.1	Statement of Compliance	3
1.2	Testing laboratory	4
1.3	Details of applicant	4
1.4	Application details	4
1.5	Test item	5
1.6	EUT Description	6
1.7	Test specification(s)	6
1.7.1	RF exposure limits	7
1.8	Operating conditions during test	8
1.8.1	General description of test procedures	8
1.8.2	Information for the Measurement of CDMA 1x Devices	8
2	Technical test	9
2.1	Summary of test results	9
2.2	Test environment	9
2.3	Measurement and test set-up	9
2.4	Measurement system	10
2.4.1	System Description	10
2.4.2	Test environment	11
2.4.3	Probe description	11
2.4.4	Phantom description	12
2.4.5	Device holder description	12
2.4.6	Scanning procedure	13
2.4.7	Spatial Peak SAR Evaluation	14
2.4.8	Data Storage and Evaluation	15
2.4.9	Test equipment utilized	17
2.4.10	Tissue simulating liquids: dielectric properties	18
2.4.11	Tissue simulating liquids: parameters	19
2.4.12	Measurement uncertainty evaluation for SAR test	20
2.4.13	Measurement uncertainty evaluation for system validation	21
2.4.14	System validation	22
2.4.15	Validation procedure	23
2.5	Test Results	24
2.5.1	Conducted power measurements	24
2.5.2	Test results (Head and Body SAR)	26
2.5.3	Extrapolated SAR Values	30
2.5.4	Multiple Transmitter Information	31
Annex 1	System performance verification	32
Annex 2	Measurement results (printout from DASY TM)	38
Annex 2.1	CDMA800MHz Head	38
Annex 2.2	CDMA800MHz Body	50
Annex 2.3	CDMA1700MHz Head	62
Annex 2.4	CDMA1700MHz Body	74
Annex 2.5	CDMA1900MHz Head	82
Annex 2.6	CDMA1900MHz Body	94
Annex 2.7	Z-axis scans	102
Annex 3	Calibration parameters	134
Annex 4	Photo documentation	135
Annex 4.1	Test Facility	135
Annex 4.2	Test Positions	136
Annex 4.3	Liquid depth	139

1 General Information

1.1 Notes

The test results of this test report relate exclusively to the test item specified in 1.5. The HUAWEI does not assume responsibility for any conclusions and generalisations drawn from the test results with regard to other specimens or samples of the type of the equipment represented by the test item. The test report may only be reproduced or published in full. Reproduction or publication of extracts from the report requires the prior written approval of HUAWEI.

1.1.1 Statement of Compliance

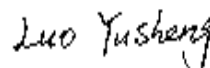
The SAR values found for the HUAWEI M580 are below the maximum recommended levels of 1.6 W/Kg as averaged over any 1 g tissue according to the FCC rule §2.1093, the ANSI/IEEE C 95.1:1999, the NCRP Report Number 86 for uncontrolled environment, according to the Health Canada's Safety Code 6 and the Industry Canada Radio Standards Specification RSS-102 for General Population/Uncontrolled exposure.

For body worn operation, this device has been tested and meets FCC RF exposure guidelines when used with any accessory that contains no metal and that positions the handset a minimum of 15 mm from the body. Use of other accessories may not ensure compliance with FCC RF exposure guidelines. The measurement together with the test system set-up is described in chapter 2.3 of this test report. A detailed description of the equipment under test can be found in chapter 1.5.

Test engineer:

2011-02-23

Luo Yusheng



Date

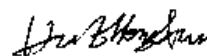
Name

Signature

Reviewed by:

2011-02-23

Hu Zhongxun



Date

Name

Signature

Approved by:

2011-02-23

Liu Chunlin



Date

Name

Signature

1.2 Testing laboratory

Huawei Technologies Co.,Ltd.
Street: Bantian, Longgang District, Shenzhen
Country: P.R.China

Telephone: +86-755-28785513
Fax: +86-755-36834474

e-mail: huzhongxun@huawei.com
Internet: www.huawei.com

State of accreditation: The Test laboratory (area of testing) is accredited according to
ISO/IEC 17025.
CNAS Registration number: L0310

1.3 Details of applicant

Name: HUAWEI TECHNOLOGIES CO., LTD
Street: Huawei Base, Bantian, Longgang District
Town: Shenzhen
Country: P.R.China
Contact: Ms. Wang Yue
Telephone: +86-0755-28780808

1.4 Application details

Date of receipt of application:	2011-02-17
Date of receipt of test item:	2011-02-17
Start/Date of test:	2011-02-17
End of test:	2011-02-21

1.5 Test item




Device Information:			
DUT Name:	CDMA 1X Digital Mobile Telephone		
Type Identification:	HUAWEI M580		
FCC ID :	QISC5870		
Serial number :	E3J2A11110700279		
Device Type :	portable device		
Exposure Category:	uncontrolled environment / general population		
Test device Production Information	production unit		
Device Operating Configurations:			
Operating Mode(s)	CDMA 800/1900/AWS Bluetooth		
Test Modulation	QPSK		
Device Class	B		
Operating Frequency Range(s)	Band	Tx (MHz)	Rx (MHz)
	CDMA 800	824.7 ~ 848.31	869.7 ~ 893.31
	CDMA AWS	1711.25 ~ 1752.5	2111.25 ~ 2152.5
	CDMA 1900	1851.25 ~ 1908.75	1931.25 ~ 1988.75
Power Class :	Tested with power control all up bits (CDMA 800)		
	Tested with power control all up bits (CDMA AWS)		
	Tested with power control all up bits (CDMA 1900)		
Test Channels (low-mid-high) :	1013-384-777 (CDMA 800)		
	25-450-850 (CDMA AWS)		
	25-600-1175 (CDMA 1900)		
Hardware Version :	Ver.C		
Software Version :	M580C45B102		
Antenna Type :	Integrated antenna		
Accessories/Body-worn Configurations:	Stereo headset		
Battery Options :	Huawei Technologies Co., Ltd. Rechargeable Li-ion Battery Model: HB4A1H; Rated capacity: 900mAh Nominal Voltage:  +3.7V; Charging Voltage:  +4.2V S/N: YACAC01HI4910805		
Charger Options:	Manufacturer: Huawei Technologies Co., Ltd. AC/DC Adapter Model: HS-050040U5 Input Voltage: ~100-240V 50/60Hz 0.2A Output Voltage: 5V  400mA; Rated Power: 2W S/N: HKAA1955965		

Table 1: Device information and operating configurations

1.6 EUT Description

HUAWEI M580 (hereinafter referred to as the M580) is a code division multiple access (CDMA) 2000 1X mobile phone working on the 800/1900 MHz and AWS (Optional) band. It is a slide-type phone with a 2.4-inch Quarter Video Graphics Array (QVGA) display touch screen based on Qualcomm QSC6055 platform. The M580 is a phone with various of multimedia functions. Besides the basic voice, Multimedia Message Service (MMS), Short Message Service (SMS), HTML browser, and Binary Runtime Environment for Wireless (BREW) functions, it also supports a microSD card and the applications such as the GPS, Video Player, Music player, Camera and Bluetooth.

1.7 Test specification(s)

Supplement C (Edition 01-01) to OET Bulletin 65 (Edition 97-01)

IEEE 1528-2003 (April 21, 2003): Recommended Practice for Determining the Peak Spatial-Average Specific Absorption Rate (SAR) in the Human Head from Wireless Communications Devices: Measurement Techniques

RSS-102: Radio Frequency Exposure Compliance of Radiocommunication Apparatus
(All Frequency Bands (Issue 4 of March 2010)

Canada's Safety Code 6: Limits of Human Exposure to Radiofrequency Electromagnetic Fields in the Frequency Range from 3 kHz to 300 GHz (99-EHD-237)

IEEE Std C95.3 – 1991, IEEE Recommended Practice for the Measurement of Potentially Hazardous Electromagnetic Fields – RF and Microwave.

IEEE Std C95.1 – 1999, IEEE Standard for Safety Levels with Respect to Human Exposure to Radio Frequency Electromagnetic Fields, 3 kHz – 300 GHz.

941225 D01 SAR test for 3G devices v02 ,Published on Nov 13 2009

648474 D01 SAR Evaluation Considerations for Handsets with Multiple Transmitters and Antennas

1.7.1 RF exposure limits

Human Exposure	Uncontrolled Environment General Population	Controlled Environment Occupational
Spatial Peak SAR* (Brain)	1.60 mW/g	8.00 mW/g
Spatial Average SAR** (Whole Body)	0.08 mW/g	0.40 mW/g
Spatial Peak SAR*** (Hands/Feet/Ankle/Wrist)	4.00 mW/g	20.00 mW/g

Table 2: RF exposure limits

The limit applied in this test report is shown in **bold** letters

Notes:

* The Spatial Peak value of the SAR averaged over any 1 gram of tissue (defined as a tissue volume in the shape of a cube) and over the appropriate averaging time

** The Spatial Average value of the SAR averaged over the whole body.

*** The Spatial Peak value of the SAR averaged over any 10 grams of tissue (defined as a tissue volume in the shape of a cube) and over the appropriate averaging time.

Uncontrolled Environments are defined as locations where there is the exposure of individuals who have no knowledge or control of their exposure.

Controlled Environments are defined as locations where there is exposure that may be incurred by persons who are aware of the potential for exposure, (i.e. as a result of employment or occupation)

1.8 Operating conditions during test

1.8.1 General description of test procedures

Connection to the EUT is established via air interface with CMU200, and the EUT is set to maximum output power by CMU200. The antenna connected to the output of the base station simulator shall be placed at least 50 cm away from the EUT. The signal transmitted by the simulator to the antenna feeding point shall be lower than the output power level of the EUT by at least 30 dB.

The test positions please refer to Annex 4.2.

1.8.2 Information for the Measurement of CDMA 1x Devices

For SAR test, the maximum power output is very important and essential; it is identical under the measurement uncertainty. It is proper to use typical Test Mode 3(FW RC3, RVS RC3, SO55) as the worst case for SAR test.

Test Parameter setup for maximum RF output power according to section 4.4.5 of 3GPP2;

Parameter	Units	Value
I or	dBm/1.23MHz	-104
PilotE c/I or	dB	-7
TrafficE c /I or	dB	-7.4

SAR for head exposure configurations is measured in RC3 with the DUT configured to transmit at full rate using Loopback Service Option SO55. SAR for RC1 is not required when the maximum average output of each channel is less than ¼ dB higher than that measured in RC3. Otherwise, SAR is measured on the maximum output channel in RC1 using the exposure configuration that results in the highest SAR for that channel in RC3.

SAR for body exposure configurations is measured in RC3 with the DUT configured using TDSO / SO32, to transmit at full rate on FCH with all other code channels disabled. SAR for multiple code channels (FCH + SCH_n) is not required when the maximum average output of each RF channel is less than ¼ dB higher than that measured with FCH only. Otherwise, SAR is measured on the maximum output channel (FCH + SCH_n) with FCH at full rate and SCH₀ enabled at 9600 bps, using the exposure configuration that results in the highest SAR for that channel with FCH only. When multiple code channels are enabled, the DUT output may shift by more than 0.5 dB and lead to higher SAR drifts and SCH dropouts.

Body SAR in RC1 is not required when the maximum average output of each channel is less than ¼ dB higher than that measured in RC3. Otherwise, SAR is measured on the maximum output channel in RC1; with Loopback Service Option SO55, at full rate, using the body exposure configuration that results in the highest SAR for that channel in RC3.

Test communication setup meet as followings:

Communication standard between mobile station and base station simulator	3GPP2 C.S0011-B
Radio configuration	RC3(Supporting CDMA 1X)
Spreading Rate	SR1
Data Rate	9600bps
Service Options	SO55(Loopback service)
Service Options	SO32(Test Data service)
Multiplex Options	The mobile station does not support this service

2 Technical test

2.1 Summary of test results

Band	SAR _{1g} (W/kg)		Test Result
	Head	Body	
CDMA 800	0.838	1.090	PASS
CDMA AWS	1.060	0.816	
CDMA 1900	0.989	0.701	

Table 3: The Maximum SAR_{1g} Values for Head and Body position

Band		Maximum Conducted Power (dBm)	Maximum Average Power (dBm)
CDMA 800	RC 1	24.5	\
	RC 3	24.4	\
CDMA AWS	RC 1	24.5	\
	RC 3	24.4	\
CDMA 1900	RC 1	24.4	\
	RC 3	24.5	\

Table 4: The Maximum Conducted Power and Average Power

2.2 Test environment

General Environment conditions in the test area are as follows:

Ambient temperature: 20°C – 24°C
 Tissue simulating liquid: 20°C – 24°C
 Humidity: 30% – 70%

Exact temperature values for each test are shown in the table(s) under 2.5. and/or on the measurement plots.

2.3 Measurement and test set-up

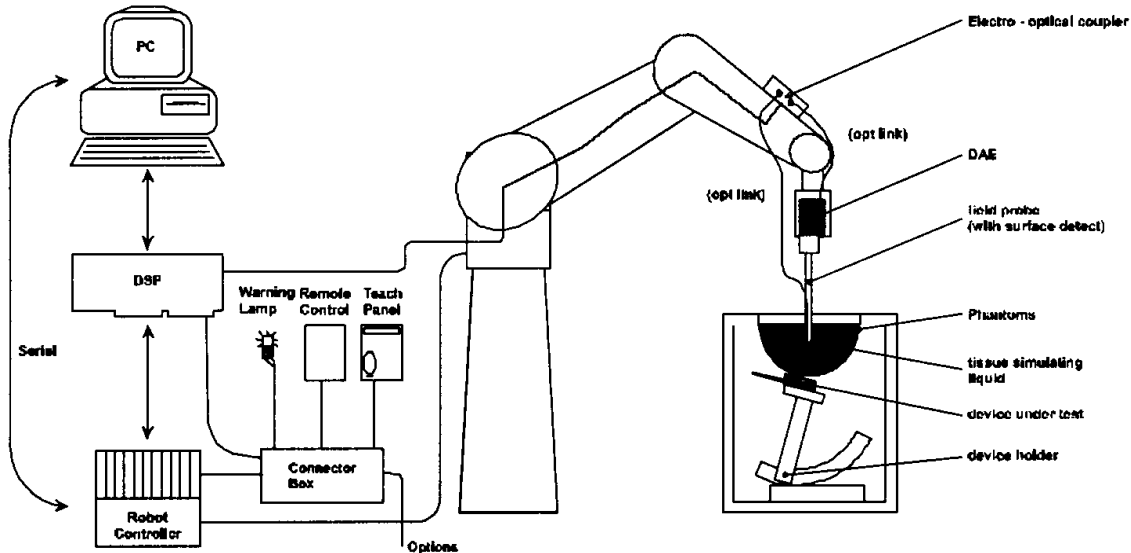
The measurement system is described in chapter 2.4.

The test setup for the system validation can be found in chapter 2.4.14.

A description of positioning and test signal control can be found in chapter 2.5 together with the test results.

2.4 Measurement system

2.4.1 System Description



The DASY5 system for performing compliance tests consists of the following items:

- A standard high precision 6-axis robot (Stäubli RX family) with controller and software. An arm extension for accommodating the data acquisition electronics (DAE).
- A dosimetric probe, i.e. an isotropic E-field probe optimized and calibrated for usage in tissue simulating liquid. The probe is equipped with an optical surface detector system.
- A data acquisition electronic (DAE) which performs the signal amplification, signal multiplexing, AD-conversion, offset measurements, mechanical surface detection, collision detection, etc. The unit is battery powered with standard or rechargeable batteries. The signal is optically transmitted to the EOC.
- A unit to operate the optical surface detector which is connected to the EOC.
- The Electro-Optical Coupler (EOC) performs the conversion from the optical into a digital electric signal of the DAE. The EOC is connected to the DASY5 measurement server.
- The DASY5 measurement server, which performs all real-time data evaluation for field measurements and surface detection, controls robot movements and handles safety operation. A computer operating Windows XP.
- DASY5 software and SEMCAD data evaluation software.
- Remote control with teach panel and additional circuitry for robot safety such as warning lamps, etc.
- The generic twin phantom enabling the testing of left-hand and right-hand usage.
- The device holder for handheld mobile phones.
- Tissue simulating liquid mixed according to the given recipes.
- System validation dipoles allowing to validate the proper functioning of the system.

2.4.2 Test environment

The DASY5 measurement system is placed at the head end of a room with dimensions: 4.5 x 4 x 3 m³, the SAM phantom is placed in a distance of 1.3 m from the side walls and 1.1m from the rear wall.

Picture 1 of the photo documentation shows a complete view of the test environment.

The system allows the measurement of SAR values larger than 0.005 mW/g.

2.4.3 Probe description

Isotropic E-Field Probe EX3DV4 for Dosimetric Measurements

Technical data according to manufacturer information	
Construction	Symmetrical design with triangular core Built-in optical fiber for surface detection system Built-in shielding against static charges PEEK enclosure material (resistant to organic solvents, e.g., glycoether)
Calibration	In air from 10 MHz to 2.5 GHz In head tissue simulating liquid (HSL) at 900 (800-1000) MHz and 1.8 GHz (1700-1910 MHz) (accuracy $\pm 11\%$; $k=2$) Calibration for other liquids and frequencies upon request
Frequency	10 MHz to 3 GHz (dosimetry); Linearity: ± 0.2 dB (30 MHz to 3 GHz)
Directivity	± 0.2 dB in HSL (rotation around probe axis) ± 0.4 dB in HSL (rotation normal to probe axis)
Dynamic range	5 μ W/g to > 100 mW/g; Linearity: ± 0.2 dB
Optical Surface Detection	± 0.2 mm repeatability in air and clear liquids over diffuse reflecting surfaces (EX3DV4 only)
Dimensions	Overall length: 337 mm Tip length: 9 mm Body diameter: 10 mm Tip diameter: 2.5 mm Distance from probe tip to dipole centers: 1.0 mm
Application	General dosimetry up to 3 GHz Compliance tests of mobile phones Fast automatic scanning in arbitrary phantoms (EX3DV4)

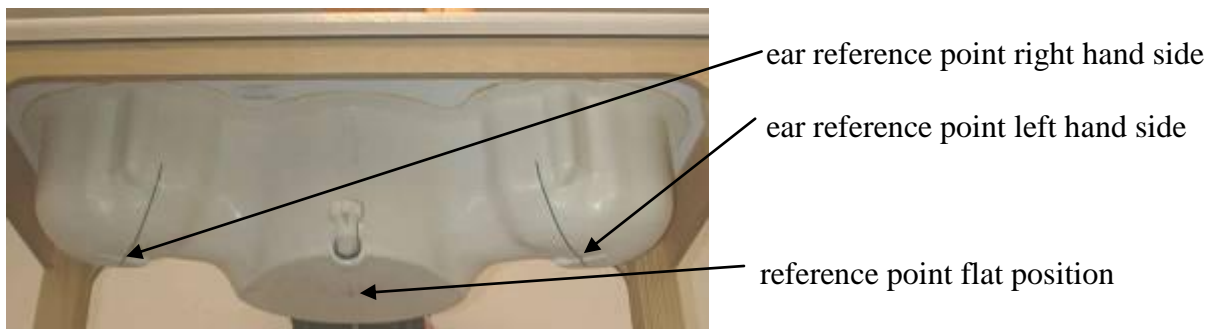
Isotropic E-Field Probe ES3DV3 for Dosimetric Measurements

Technical data according to manufacturer information	
Construction	Symmetrical design with triangular core Interleaved sensors Built-in shielding against static charges PEEK enclosure material (resistant to organic solvents, e.g., DGBE)
Calibration	ISO/IEC 17025 calibration service available.
Frequency	10 MHz to 4 GHz; Linearity: ± 0.2 dB (30 MHz to 4 GHz)
Directivity	± 0.2 dB in HSL (rotation around probe axis) ± 0.3 dB in tissue material (rotation normal to probe axis)
Dynamic range	5 μ W/g to > 100 mW/g; Linearity: ± 0.2 dB
Dimensions	Overall length: 330 mm (Tip: 20 mm) Tip diameter: 3.9 mm (Body: 12 mm) Distance from probe tip to dipole centers: 2.0 mm
Application	General dosimetry up to 4 GHz Dosimetry in strong gradient fields Compliance tests of mobile phones

2.4.4 Phantom description

The used SAM Phantom meets the requirements specified in Edition 01-01 of Supplement C to OET Bulletin 65 for Specific Absorption Rate (SAR) measurements.

The phantom consists of a fibreglass shell integrated in a wooden table. It allows left-hand and right-hand head as well as body-worn measurements with a maximum liquid depth of 18 cm in head position and 22 cm in planar position (body measurements). The thickness of the Phantom shell is 2 mm +/- 0.1 mm.



2.4.5 Device holder description

The DASY5 device holder has two scales for device rotation (with respect to the body axis) and the device inclination (with respect to the line between the ear openings). The plane between the ear openings and the mouth tip has a rotation angle of 65°. The bottom plate contains three pair of bolts for locking the device holder. The device holder positions are adjusted to the standard measurement positions in the three sections. This device holder is used for standard mobile phones or PDA's only. If necessary an additional support of polystyrene material is used.



Larger DUT's (e.g. notebooks) cannot be tested using this device holder. Instead a support of bigger polystyrene cubes and thin polystyrene plates is used to position the DUT in all relevant positions to find and measure spots with maximum SAR values.

Therefore those devices are normally only tested at the flat part of the SAM.

2.4.6 Scanning procedure

The DASY5 installation includes predefined files with recommended procedures for measurements and validation. They are read-only document files and destined as fully defined but unmeasured masks. All test positions (head or body-worn) are tested with the same configuration of test steps differing only in the grid definition for the different test positions.

- The „reference“ and „drift“ measurements are located at the beginning and end of the batch process. They measure the field drift at one single point in the liquid over the complete procedure. The indicated drift is mainly the variation of the DUT's output power and should vary max. +/- 5 %.
- The „surface check“ measurement tests the optical surface detection system of the DASY5 system by repeatedly detecting the surface with the optical and mechanical surface detector and comparing the results. The output gives the detecting heights of both systems, the difference between the two systems and the standard deviation of the detection repeatability. Air bubbles or refraction in the liquid due to separation of the sugar-water mixture gives poor repeatability (above $\pm 0.1\text{mm}$). To prevent wrong results tests are only executed when the liquid is free of air bubbles. The difference between the optical surface detection and the actual surface depends on the probe and is specified with each probe. (It does not depend on the surface reflectivity or the probe angle to the surface within $\pm 30^\circ$.)
- The „area scan“ measures the SAR above the DUT or verification dipole on a parallel plane to the surface. It is used to locate the approximate location of the peak SAR with 2D spline interpolation. The robot performs a stepped movement along one grid axis while the local electrical field strength is measured by the probe. The probe is touching the surface of the SAM during acquisition of measurement values. The standard scan uses large grid spacing for faster measurement. Standard grid spacing for head measurements is 15 mm in x- and y- dimension. If a finer resolution is needed, the grid spacing can be reduced. Grid spacing and orientation have no influence on the SAR result. For special applications where the standard scan method does not find the peak SAR within the grid, e.g. mobile phones with flip cover, the grid can be adapted in orientation. Results of this coarse scan are shown in annex 2.
- A „7x7x7 zoom scan“ measures the field in a volume around the 2D peak SAR value acquired in the previous „coarse“ scan. This is a fine 7x7 grid where the robot additionally moves the probe in 7 steps along the z-axis away from the bottom of the Phantom. Grid spacing for the cube measurement is 5 mm in x and y-direction and 5 mm in z-direction. DASY5 is also able to perform repeated zoom scans if more than 1 peak is found during area scan. In this document, the evaluated peak 1g and 10g averaged SAR values are shown in the 2D-graphics in annex 2. Test results relevant for the specified standard (see chapter 1.6.) are shown in table form in chapter 2.5.
- A Z-axis scan measures the total SAR value at the x-and y-position of the maximum SAR value found during the cube 7x7x7 scan. The probe is moved away in z-direction from the bottom of the SAM phantom in 2mm steps. This measurement shows the continuity of the liquid and can - depending in the field strength – also show the liquid depth. A z-axis scan of the measurement with maximum SAR value is shown in annex 2.

2.4.7 Spatial Peak SAR Evaluation

The spatial peak SAR - value for 1 and 10 g is evaluated after the Cube measurements have been done. The basis of the evaluation are the SAR values measured at the points of the fine cube grid consisting of $7 \times 7 \times 7$ points. The algorithm that finds the maximal averaged volume is separated into three different stages.

- The data between the dipole center of the probe and the surface of the phantom are extrapolated. This data cannot be measured since the center of the dipole is 2.7 mm away from the tip of the probe and the distance between the surface and the lowest measuring point is about 1 mm (see probe calibration sheet). The extrapolated data from a cube measurement can be visualized by selecting 'Graph Evaluated'.
- The maximum interpolated value is searched with a straight-forward algorithm. Around this maximum the SAR - values averaged over the spatial volumes (1g or 10 g) are computed using the 3d-spline interpolation algorithm. If the volume cannot be evaluated (i.e., if a part of the grid was cut off by the boundary of the measurement area) the evaluation will be started on the corners of the bottom plane of the cube.
- All neighboring volumes are evaluated until no neighboring volume with a higher average value is found.

Extrapolation

The extrapolation is based on a least square algorithm [W. Gander, Computermathematik, p.168-180]. Through the points in the first 3 cm along the z-axis, polynomials of order four are calculated. These polynomials are then used to evaluate the points between the surface and the probe tip. The points, calculated from the surface, have a distance of 1 mm from each other.

Interpolation

The interpolation of the points is done with a 3d-Spline. The 3d-Spline is composed of three one-dimensional splines with the "Not a knot"-condition [W. Gander, Computermathematik, p.141-150] (x, y and z -direction) [Numerical Recipes in C, Second Edition, p.123ff].

Volume Averaging

At First the size of the cube is calculated. Then the volume is integrated with the trapezoidal algorithm. 8000 points ($20 \times 20 \times 20$) are interpolated to calculate the average.

Advanced Extrapolation

DASY5 uses the advanced extrapolation option which is able to compensate boundary effects on E-field probes.

2.4.8 Data Storage and Evaluation

Data Storage

The DASY5 software stores the acquired data from the data acquisition electronics as raw data (in microvolt readings from the probe sensors), together with all necessary software parameters for the data evaluation (probe calibration data, liquid parameters and device frequency and modulation data) in measurement files with the extension ".DA4". The software evaluates the desired unit and format for output each time the data is visualized or exported. This allows verification of the complete software setup even after the measurement and allows correction of incorrect parameter settings. For example, if a measurement has been performed with a wrong crest factor parameter in the device setup, the parameter can be corrected afterwards and the data can be re-evaluated.

The measured data can be visualized or exported in different units or formats, depending on the selected probe type ([V/m], [A/m], [°C], [mW/g], [mW/cm²], [dBrel], etc.). Some of these units are not available in certain situations or show meaningless results, e.g., a SAR output in a lossless media will always be zero. Raw data can also be exported to perform the evaluation with other software packages.

Data Evaluation by SEMCAD

The SEMCAD software automatically executes the following procedures to calculate the field units from the microvolt readings at the probe connector. The parameters used in the evaluation are stored in the configuration modules of the software:

Probe parameters:	- Sensitivity	$\text{Norm}_i, a_{i0}, a_{i1}, a_{i2}$
	- Conversion factor	ConvF_i
	- Diode compression point	Dcpi
Device parameters:	- Frequency	f
	- Crest factor	cf
Media parameters:	- Conductivity	σ
	- Density	ρ

These parameters must be set correctly in the software. They can be found in the component documents or they can be imported into the software from the configuration files issued for the DASY5 components. In the direct measuring mode of the multimeter option, the parameters of the actual system setup are used. In the scan visualization and export modes, the parameters stored in the corresponding document files are used.

The first step of the evaluation is a linearization of the filtered input signal to account for the compression characteristics of the detector diode. The compensation depends on the input signal, the diode type and the DC-transmission factor from the diode to the evaluation electronics.

If the exciting field is pulsed, the crest factor of the signal must be known to correctly compensate for peak power. The formula for each channel can be given as:

$$V_i = U_i + U_i^2 \cdot cf/dcp_i$$

with V_i = compensated signal of channel i (i = x, y, z)
 U_i = input signal of channel i (i = x, y, z)
 cf = crest factor of exciting field (DASY parameter)
 dcp_i = diode compression point (DASY parameter)

From the compensated input signals the primary field data for each channel can be evaluated:

E-field probes: $E_i = (V_i / Norm_i \cdot ConvF)^{1/2}$

H-field probes: $H_i = (V_i)^{1/2} \cdot (a_{i0} + a_{i1}f + a_{i2}f^2)/f$

with V_i = compensated signal of channel i (i = x, y, z)
 $Norm_i$ = sensor sensitivity of channel i (i = x, y, z)
 [mV/(V/m)²] for E-field Probes
 $ConvF$ = sensitivity enhancement in solution
 a_{ij} = sensor sensitivity factors for H-field probes
 f = carrier frequency [GHz]
 E_i = electric field strength of channel i in V/m
 H_i = magnetic field strength of channel i in A/m

The RSS value of the field components gives the total field strength (Hermitian magnitude):

$$E_{tot} = (E_x^2 + E_y^2 + E_z^2)^{1/2}$$

The primary field data are used to calculate the derived field units.

$$SAR = (E_{tot}^2 \cdot \sigma) / (\rho \cdot 1000)$$

with SAR = local specific absorption rate in mW/g
 E_{tot} = total field strength in V/m
 σ = conductivity in [mho/m] or [Siemens/m]
 ρ = equivalent tissue density in g/cm³

Note that the density is normally set to 1 (or 1.06), to account for actual brain density rather than the density of the simulation liquid. The power flow density is calculated assuming the excitation field to be a free space field.

$$P_{pwe} = E_{tot}^2 / 3770 \quad \text{or} \quad P_{pwe} = H_{tot}^2 \cdot 37.7$$

with P_{pwe} = equivalent power density of a plane wave in mW/cm²
 E_{tot} = total electric field strength in V/m
 H_{tot} = total magnetic field strength in A/m

2.4.9 Test equipment utilized

This table gives a complete overview of the SAR measurement equipment

Devices used during the test described in chapter 2.5. are marked ☒

	Manufacturer	Device	Type	Serial number	Date of last calibration)*
<input checked="" type="checkbox"/>	Schmid & Partner Engineering AG	Dosimetric E-Field Probe	ES3DV3	3168	2010-12-23
<input type="checkbox"/>	Schmid & Partner Engineering AG	Dosimetric E-Field Probe	EX3DV4	3736	2010-11-16
<input checked="" type="checkbox"/>	Schmid & Partner Engineering AG	835 MHz System Validation Dipole	D835V2	4d095	2009-05-25
<input type="checkbox"/>	Schmid & Partner Engineering AG	900 MHz System Validation Dipole	D900V2	1d063	2009-05-26
<input checked="" type="checkbox"/>	Schmid & Partner Engineering AG	1800 MHz System Validation Dipole	D1800V2	2d157	2009-05-27
<input checked="" type="checkbox"/>	Schmid & Partner Engineering AG	1900 MHz System Validation Dipole	D1900V2	5d091	2009-05-28
<input type="checkbox"/>	Schmid & Partner Engineering AG	2000 MHz System Validation Dipole	D2000V2	1036	2009-05-29
<input type="checkbox"/>	Schmid & Partner Engineering AG	Data acquisition electronics	DAE4	851	2010-06-30
<input checked="" type="checkbox"/>	Schmid & Partner Engineering AG	Data acquisition electronics	DAE4	852	2010-12-24
<input checked="" type="checkbox"/>	Schmid & Partner Engineering AG	Software	DASY 5	N/A	N/A
<input checked="" type="checkbox"/>	Schmid & Partner Engineering AG	Twin Phantom	SAM1	TP-1475	N/A
<input checked="" type="checkbox"/>	Schmid & Partner Engineering AG	Twin Phantom	SAM2	TP-1474	N/A
<input checked="" type="checkbox"/>	Rohde & Schwarz	Universal Radio Communication Tester	CMU 200	111379	2010-08-11
<input checked="" type="checkbox"/>	Agilent)*	Network Analyser 300 kHz to 8.5 GHz	E5071B	MY42404956	2010-03-08
<input checked="" type="checkbox"/>	Agilent	Dielectric Probe Kit	85070E	2484	N/A
<input checked="" type="checkbox"/>	Agilent	Signal Generator	N5181A	MY47420989	2010-03-08
<input checked="" type="checkbox"/>	MINI-CIRCUITS	Amplifier	ZHL-42W	QA0746001	N/A
<input checked="" type="checkbox"/>	Agilent	Power Meter	E4417A	MY45101339	2010-05-19
<input checked="" type="checkbox"/>	Agilent	Power Meter Sensor	E9321A	MY44420359	2010-05-19

Note: The calibration interval of validation dipoles is 3 years.

)*: Network analyzer probe calibration against air, distilled water and a shorting block performed before measuring liquid parameters.

2.4.10 Tissue simulating liquids: dielectric properties

The following materials are used for producing the tissue-equivalent materials.

(liquids used for tests described in chapter 2.5. are marked with ☒) :

Ingredients (% of weight)	Frequency (MHz)					
	<input type="checkbox"/> 450	<input checked="" type="checkbox"/> 835	<input type="checkbox"/> 900	<input checked="" type="checkbox"/> 1800	<input checked="" type="checkbox"/> 1900	<input type="checkbox"/> 2450
frequency band						
Tissue Type	Head	Head	Head	Head	Head	Head
Water	38.56	41.45	40.92	52.64	54.9	62.7
Salt (NaCl)	3.95	1.45	1.48	0.36	0.18	0.5
Sugar	56.32	56.0	56.5	0.0	0.0	0.0
HEC	0.98	1.0	1.0	0.0	0.0	0.0
Bactericide	0.19	0.1	0.1	0.0	0.0	0.0
Triton X-100	0.0	0.0	0.0	0.0	0.0	36.8
DGBE	0.0	0.0	0.0	47.0	44.92	0.0

Table 5: Head tissue dielectric properties

Ingredients (% of weight)	Frequency (MHz)					
	<input type="checkbox"/> 450	<input checked="" type="checkbox"/> 835	<input type="checkbox"/> 900	<input checked="" type="checkbox"/> 1800	<input checked="" type="checkbox"/> 1900	<input type="checkbox"/> 2450
frequency band						
Tissue Type	Body	Body	Body	Body	Body	Body
Water	51.16	52.4	56.0	69.91	69.91	73.2
Salt (NaCl)	1.49	1.40	0.76	0.13	0.13	0.04
Sugar	46.78	45.0	41.76	0.0	0.0	0.0
HEC	0.52	1.0	1.21	0.0	0.0	0.0
Bactericide	0.05	0.1	0.27	0.0	0.0	0.0
Triton X-100	0.0	0.0	0.0	0.0	0.0	0.0
DGBE	0.0	0.0	0.0	29.96	29.96	26.7

Table 6: Body tissue dielectric properties

Salt: 99+% Pure Sodium Chloride

Sugar: 98+% Pure Sucrose

Water: De-ionized, 16MΩ+ resistivity

HEC: Hydroxyethyl Cellulose

DGBE: 99+% Di(ethylene glycol) butyl ether, [2-(2-butoxyethoxy)ethanol]

Triton X-100(ultra pure): Polyethylene glycol mono [4-(1,1,3,3-tetramethylbutyl)phenyl]ether

Note : Due to their availability body tissue simulating liquids as defined by FCC OET Bulletin 65 Supplement C are generally used for body worn SAR testing according to European standards.

2.4.11 Tissue simulating liquids: parameters

Used Target Frequency	Target Head Tissue		Measured Head Tissue		Measured Date
	Permittivity	Conductivity [S/m]	Permittivity	Conductivity [S/m]	
835	41.5	0.90	41.3	0.878	2011-02-21
1800	40.0	1.40	41.5	1.44	2011-02-18
1900	40.0	1.40	40.3	1.42	2011-02-17

Table 7: Parameter of the head tissue simulating liquid

Used Target Frequency	Target Body Tissue		Measured Body Tissue		Measured Date
	Permittivity	Conductivity [S/m]	Permittivity	Conductivity [S/m]	
835	55.2	0.97	53.5	0.957	2011-02-19
1800	53.3	1.52	52.6	1.52	2011-02-18
1900	53.3	1.52	52.6	1.53	2011-02-17

Table 8: Parameter of the body tissue simulating liquid

Note: The dielectric properties have been measured using the contact probe method at 22°C.

2.4.12 Measurement uncertainty evaluation for SAR test

The overall combined measurement uncertainty of the measurement system is $\pm 10.7\%$ ($K=1$).

The expanded uncertainty ($k=2$) is assessed to be $\pm 21.4\%$

This measurement uncertainty budget is suggested by IEEE P1528 and determined by Schmid & Partner Engineering AG. The breakdown of the individual uncertainties is as follows:

Error Sources	Uncertainty Value	Probability Distribution	Divisor	c_i 1g	c_i 10g	Standard Uncertainty 1g	Standard Uncertainty 10g	v_i^2 or v_{eff}
Measurement System								
Probe calibration	$\pm 5.9\%$	Normal	1	1	1	$\pm 5.9\%$	$\pm 5.9\%$	∞
Axial isotropy	$\pm 4.7\%$	Rectangular	$\sqrt{3}$	0.7	0.7	$\pm 1.9\%$	$\pm 1.9\%$	∞
Hemispherical isotropy	$\pm 9.6\%$	Rectangular	$\sqrt{3}$	0.7	0.7	$\pm 3.9\%$	$\pm 3.9\%$	∞
Spatial resolution	$\pm 0.0\%$	Rectangular	$\sqrt{3}$	1	1	$\pm 0.0\%$	$\pm 0.0\%$	∞
Boundary effects	$\pm 1.0\%$	Rectangular	$\sqrt{3}$	1	1	$\pm 0.6\%$	$\pm 0.6\%$	∞
Probe linearity	$\pm 4.7\%$	Rectangular	$\sqrt{3}$	1	1	$\pm 2.7\%$	$\pm 2.7\%$	∞
System detection limits	$\pm 1.0\%$	Rectangular	$\sqrt{3}$	1	1	$\pm 0.6\%$	$\pm 0.6\%$	∞
Readout electronics	$\pm 0.3\%$	Normal	1	1	1	$\pm 0.3\%$	$\pm 0.3\%$	∞
Response time	$\pm 0.8\%$	Rectangular	$\sqrt{3}$	1	1	$\pm 0.5\%$	$\pm 0.5\%$	∞
Integration time	$\pm 2.6\%$	Rectangular	$\sqrt{3}$	1	1	$\pm 1.5\%$	$\pm 1.5\%$	∞
RF ambient conditions	$\pm 3.0\%$	Rectangular	$\sqrt{3}$	1	1	$\pm 1.7\%$	$\pm 1.7\%$	∞
Probe positioner	$\pm 0.4\%$	Rectangular	$\sqrt{3}$	1	1	$\pm 0.2\%$	$\pm 0.2\%$	∞
Probe positioning	$\pm 2.9\%$	Rectangular	$\sqrt{3}$	1	1	$\pm 1.7\%$	$\pm 1.7\%$	∞
Max. SAR evaluation	$\pm 1.0\%$	Rectangular	$\sqrt{3}$	1	1	$\pm 0.6\%$	$\pm 0.6\%$	∞
Test Sample Related								
Device positioning	$\pm 2.9\%$	Normal	1	1	1	$\pm 2.9\%$	$\pm 2.9\%$	145
Device holder uncertainty	$\pm 3.6\%$	Normal	1	1	1	$\pm 3.6\%$	$\pm 3.6\%$	5
Power drift	$\pm 5.0\%$	Rectangular	$\sqrt{3}$	1	1	$\pm 2.9\%$	$\pm 2.9\%$	∞
Phantom and Set-up								
Phantom uncertainty	$\pm 4.0\%$	Rectangular	$\sqrt{3}$	1	1	$\pm 2.3\%$	$\pm 2.3\%$	∞
Liquid conductivity (target)	$\pm 5.0\%$	Rectangular	$\sqrt{3}$	0.64	0.43	$\pm 1.8\%$	$\pm 1.2\%$	∞
Liquid conductivity (meas.)	$\pm 2.5\%$	Normal	1	0.64	0.43	$\pm 1.6\%$	$\pm 1.1\%$	∞
Liquid permittivity (target)	$\pm 5.0\%$	Rectangular	$\sqrt{3}$	0.6	0.49	$\pm 1.7\%$	$\pm 1.4\%$	∞
Liquid permittivity (meas.)	$\pm 2.5\%$	Normal	1	0.6	0.49	$\pm 1.5\%$	$\pm 1.2\%$	∞
Combined Uncertainty						$\pm 10.9\%$	$\pm 10.7\%$	387
Expanded Std. Uncertainty						$\pm 21.9\%$	$\pm 21.4\%$	

Table 9: Measurement uncertainties

2.4.13 Measurement uncertainty evaluation for system validation

The overall combined measurement uncertainty of the measurement system is $\pm 9.2\%$ ($K=1$).

The expanded uncertainty ($k=2$) is assessed to be $\pm 18.4\%$

This measurement uncertainty budget is suggested by IEEE P1528 and determined by Schmid & Partner Engineering AG. The breakdown of the individual uncertainties is as follows:

Error Sources	Uncertainty Value	Probability Distribution	Divisor	c_i 1g	c_i 10g	Standard Uncertainty 1g	Standard Uncertainty 10g	v_i^2 or v_{eff}
Measurement System								
Probe calibration	$\pm 5.9\%$	Normal	1	1	1	$\pm 5.9\%$	$\pm 5.9\%$	∞
Axial isotropy	$\pm 4.7\%$	Rectangular	$\sqrt{3}$	1	1	$\pm 2.7\%$	$\pm 2.7\%$	∞
Hemispherical isotropy	$\pm 9.6\%$	Rectangular	$\sqrt{3}$	0.7	0.7	$\pm 0.0\%$	$\pm 0.0\%$	∞
Boundary effects	$\pm 1.0\%$	Rectangular	$\sqrt{3}$	1	1	$\pm 0.6\%$	$\pm 0.6\%$	∞
Probe linearity	$\pm 4.7\%$	Rectangular	$\sqrt{3}$	1	1	$\pm 2.7\%$	$\pm 2.7\%$	∞
System detection limits	$\pm 1.0\%$	Rectangular	$\sqrt{3}$	1	1	$\pm 0.6\%$	$\pm 0.6\%$	∞
Readout electronics	$\pm 0.3\%$	Normal	1	1	1	$\pm 0.3\%$	$\pm 0.3\%$	∞
Response time	$\pm 0.0\%$	Rectangular	$\sqrt{3}$	1	1	$\pm 0.0\%$	$\pm 0.0\%$	∞
Integration time	$\pm 0.0\%$	Rectangular	$\sqrt{3}$	1	1	$\pm 0.0\%$	$\pm 0.0\%$	∞
RF ambient conditions	$\pm 1.0\%$	Rectangular	$\sqrt{3}$	1	1	$\pm 0.6\%$	$\pm 0.6\%$	∞
Probe positioner	$\pm 0.4\%$	Rectangular	$\sqrt{3}$	1	1	$\pm 0.2\%$	$\pm 0.2\%$	∞
Probe positioning	$\pm 2.9\%$	Rectangular	$\sqrt{3}$	1	1	$\pm 1.7\%$	$\pm 1.7\%$	∞
Max. SAR evaluation	$\pm 1.0\%$	Rectangular	$\sqrt{3}$	1	1	$\pm 0.6\%$	$\pm 0.6\%$	∞
Dipole								
Deviation of experimental dipole	$\pm 5.5\%$	Rectangular	$\sqrt{3}$	1	1	$\pm 3.2\%$	$\pm 3.2\%$	∞
Dipole axis to liquid distance	$\pm 2.0\%$	Rectangular	1	1	1	$\pm 1.2\%$	$\pm 1.2\%$	∞
Power drift	$\pm 4.7\%$	Rectangular	$\sqrt{3}$	1	1	$\pm 2.7\%$	$\pm 2.7\%$	∞
Phantom and Set-up								
Phantom uncertainty	$\pm 4.0\%$	Rectangular	$\sqrt{3}$	1	1	$\pm 2.3\%$	$\pm 2.3\%$	∞
Liquid conductivity (target)	$\pm 5.0\%$	Rectangular	$\sqrt{3}$	0.64	0.43	$\pm 1.8\%$	$\pm 1.2\%$	∞
Liquid conductivity (meas.)	$\pm 2.5\%$	Normal	1	0.64	0.43	$\pm 1.6\%$	$\pm 1.1\%$	∞
Liquid permittivity (target)	$\pm 5.0\%$	Rectangular	$\sqrt{3}$	0.6	0.49	$\pm 1.7\%$	$\pm 1.4\%$	∞
Liquid permittivity (meas.)	$\pm 2.5\%$	Normal	1	0.6	0.49	$\pm 1.5\%$	$\pm 1.2\%$	∞
Combined Uncertainty						$\pm 9.5\%$	$\pm 9.2\%$	
Expanded Std. Uncertainty						$\pm 18.9\%$	$\pm 18.4\%$	

Table 10: Measurement uncertainties

2.4.14 System validation

The system validation is performed for verifying the accuracy of the complete measurement system and performance of the software. The system validation is performed with tissue equivalent material according to IEEE P1528 (described above). The following table shows validation results for all frequency bands and tissue liquids used during the tests of the test item described in chapter 1.5. (graphic plot(s) see annex 1).

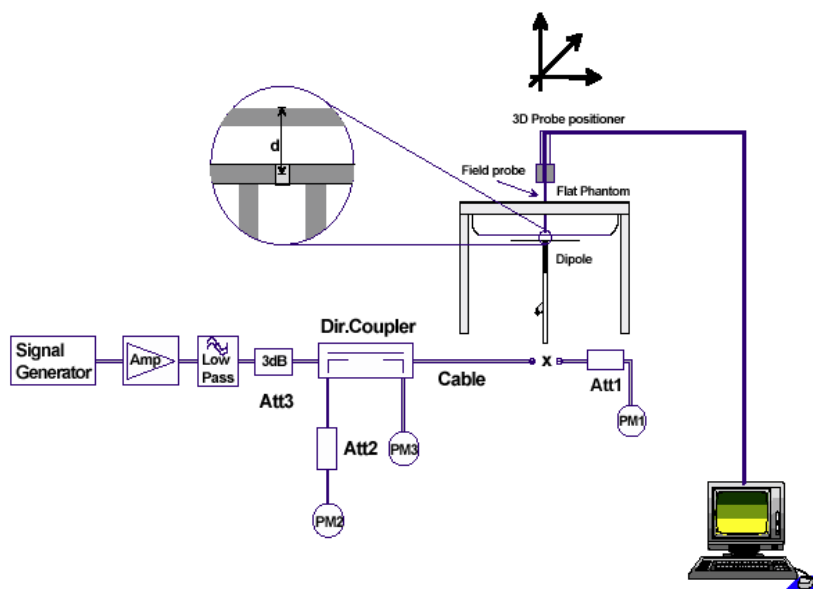
Validation Kit	Frequency	Target SAR _{1g} (250 mW) (+/- 10%)	Target SAR _{10g} (250 mW) (+/- 10%)	Measured SAR _{1g}	Measured SAR _{10g}	Measured date
D835V2 S/N: 4d095	835 MHz Head	2.29mW/g	1.50mW/g	2.49mW/g	1.64mW/g	2011-02-21
D835V2 S/N: 4d095	835 MHz Body	2.49mW/g	1.62mW/g	2.56mW/g	1.68mW/g	2011-02-19
D1800V2 S/N: 2d157	1800 MHz Head	9.23mW/g	4.90mW/g	9.90mW/g	5.10mW/g	2011-02-18
D1800V2 S/N: 2d157	1800 MHz Body	9.60mW/g	5.13mW/g	9.85mW/g	5.14mW/g	2011-02-18
D1900V2 S/N: 5d091	1900 MHz Head	9.60mW/g	5.10mW/g	10.2mW/g	5.21mW/g	2011-02-17
D1900V2 S/N: 5d091	1900 MHz Body	10.1mW/g	5.27mW/g	10.7mW/g	5.50mW/g	2011-02-17

Table 11: Results system validation

2.4.15 Validation procedure

The validation is performed by using a validation dipole which is positioned parallel to the planar part of the SAM phantom at the reference point. The distance of the dipole to the SAM phantom is determined by a plexiglass spacer. The dipole is connected to the signal source consisting of signal generator and amplifier via a directional coupler, N-connector cable and adaption to SMA. It is fed with a power of 250 mW. To adjust this power a power meter is used. The power sensor is connected to the cable before the validation to measure the power at this point and do adjustments at the signal generator. At the outputs of the directional coupler both return loss as well as forward power are controlled during the validation to make sure that emitted power at the dipole is kept constant. This can also be checked by the power drift measurement after the test (result on plot).

Validation results have to be equal or near the values determined during dipole calibration (target SAR in table above) with the relevant liquids and test system.



2.5 Test Results

2.5.1 Conducted power measurements

CDMA 800MHz

CDMA Cellular (RC3)	Conducted Power		
	Channel 1013	Channel 384	Channel 777
Before test (dBm)	24.4	24.3	24.3
After test (dBm)	24.3	24.3	24.2
CDMA Cellular (RC1)	Conducted Power		
	Channel 1013	Channel 384	Channel 777
Before test (dBm)	24.3	24.5	24.4
After test (dBm)	24.4	24.4	24.4

Table 12: Test results conducted power measurement CDMA 800MHz

CDMA AWS 1700MHz

CDMA AWS (RC3)	Conducted Power		
	Channel 25	Channel 450	Channel 850
Before test (dBm)	24.3	24.4	24.3
After test (dBm)	24.3	24.3	24.2
CDMA AWS (RC1)	Conducted Power		
	Channel 25	Channel 450	Channel 850
Before test (dBm)	24.4	24.4	24.3
After test (dBm)	24.5	24.3	24.3

Table 13: Test results conducted power measurement CDMA AWS 1700MHz

CDMA 1900MHz

CDMA PCS(RC3)	Conducted Power		
	Channel 25	Channel 600	Channel 1175
Before test (dBm)	24.3	24.4	24.5
After test (dBm)	24.5	24.2	24.4
CDMA PCS (RC1)	Conducted Power		
	Channel 25	Channel 600	Channel 1175
Before test (dBm)	24.4	24.4	24.3
After test (dBm)	24.2	24.4	24.4

Table 14: Test results conducted power measurement CDMA 1900MHz

- Note: 1) The maximum power numbers are marks in **bold**.
2) To verify if the output changes within the tolerance before and after each SAR test, please see the power drift of each test in chapter 2.5.2.

2.5.2 Test results (Head and Body SAR)

CDMA 800MHz

The table contains the measured SAR values averaged over a mass of 1 g						
Channel / frequency	Position	Left hand position	Right hand position	Power Drift (dB)	Limit	Liquid temperature
HUAWEI M580 Slide Open (RC3 , SO55)						
384 / 836.52 MHz	cheek	0.838 W/kg	0.818 W/kg	0.000/0.113	1.6 W/kg	22.2/22.2 °C
384 / 836.52 MHz	tilted15°	0.478 W/kg	0.507 W/kg	-0.076/-0.020	1.6 W/kg	22.2/22.2 °C
HUAWEI M580 Slide Close (RC3 , SO55)						
384 / 836.52 MHz	cheek	0.567 W/kg	0.511 W/kg	0.022/0.077	1.6 W/kg	22.2/22.2 °C
384 / 836.52 MHz	tilted15°	0.451 W/kg	0.437 W/kg	0.100/-0.064	1.6 W/kg	22.2/22.2 °C
HUAWEI M580 Slide Open (RC3 , SO55)						
777 / 848.31 MHz	cheek	0.701 W/kg	0.653 W/kg	0.044/-0.196	1.6 W/kg	22.2/22.2 °C
1013 / 824.7 MHz	cheek	0.732 W/kg	0.741 W/kg	-0.133/0.013	1.6 W/kg	22.2/22.2 °C

Table 15: Test results (Head SAR CDMA 800MHz)

The table contains the measured SAR values averaged over a mass of 1 g					
Channel / frequency	Position	Body worn	Power Drift (dB)	Limit	Liquid temperature
HUAWEI M580 Slide Open (RC3 , SO32)					
384 / 836.52 MHz	front	0.847 W/kg	-0.032	1.6 W/kg	22.0 °C
384 / 836.52 MHz	rear	1.090 W/kg	0.147	1.6 W/kg	22.0 °C
HUAWEI M580 Slide Close (RC3 , SO32)					
384 / 836.52 MHz	front	0.394 W/kg	0.012	1.6 W/kg	22.0 °C
384 / 836.52 MHz	rear	0.954 W/kg	-0.030	1.6 W/kg	22.0 °C
HUAWEI M580 Slide Open (RC3 , SO32)					
777 / 848.31 MHz	front	0.687 W/kg	-0.181	1.6 W/kg	22.0 °C
1013 / 824.7 MHz	front	0.732 W/kg	-0.033	1.6 W/kg	22.0 °C
HUAWEI M580 Slide Open (RC3 , SO32)					
777 / 848.31 MHz	rear	0.875 W/kg	-0.121	1.6 W/kg	22.0 °C
1013 / 824.7 MHz	rear	0.976 W/kg	-0.064	1.6 W/kg	22.0 °C
HUAWEI M580 Slide Close (RC3 , SO32)					
777 / 848.31 MHz	rear	0.629 W/kg	-0.008	1.6 W/kg	22.0 °C
1013 / 824.7 MHz	rear	0.622 W/kg	-0.169	1.6 W/kg	22.0 °C

HUAWEI M580 with Headset Slide Open (RC3 , SO55)					
384 / 836.52 MHz	rear	0.781 W/kg	-0.111	1.6 W/kg	22.0 °C
HUAWEI M580 with Bluetooth Headset Slide Open (RC3 , SO55)					
384 / 836.52 MHz	rear	1.080 W/kg	-0.016	1.6 W/kg	22.0 °C

Table 16: Test results (Body SAR CDMA 800MHz)

Note: 1) The value with blue colour is the maximum SAR value of each test band.

2) Upper and lower frequencies were measured at the worst position.

3) The SAR test shall be performed at the high, middle and low frequency channels of each operating mode. If the SAR measured at mid-band channel for each test configuration is at least 3.0 dB lower than the SAR limit (< 0.8 W/kg), testing at the high and low channels is optional.

4) Tests in body position were performed with 15 mm air gap between DUT and SAM to simulate the use of a non-metallic belt-clip or holster.

5) The addition body test was performed at worst case.

CDMA AWS 1700 MHz

The table contains the measured SAR values averaged over a mass of 1 g						
Channel / frequency	Position	Left hand position	Right hand position	Power Drift (dB)	Limit	Liquid temperature
HUAWEI M580 Slide Open (RC3 , SO55)						
450 / 1732.5 MHz	cheek	0.912 W/kg	0.633 W/kg	0.004/-0.004	1.6 W/kg	21.5/21.5 °C
450 / 1732.5 MHz	tilted15°	0.343 W/kg	0.476 W/kg	-0.149/-0.126	1.6 W/kg	21.5/21.5 °C
HUAWEI M580 Slide Close (RC3 , SO55)						
450 / 1732.5 MHz	cheek	0.927 W/kg	0.596 W/kg	0.004/-0.004	1.6 W/kg	21.5/21.5 °C
450 / 1732.5 MHz	tilted15°	0.343 W/kg	0.346 W/kg	-0.149/-0.126	1.6 W/kg	21.5/21.5 °C
HUAWEI M580 Slide Open (RC3 , SO55)						
850 /1752.25 MHz	cheek	0.940 W/kg	--- W/kg	0.084/---	1.6 W/kg	21.5/--- °C
25 /1711.25 MHz	cheek	0.875 W/kg	--- W/kg	0.068/---	1.6 W/kg	21.5/--- °C
HUAWEI M580 Slide Close (RC3 , SO55)						
850 /1752.25 MHz	cheek	1.060 W/kg	--- W/kg	-0.147/---	1.6 W/kg	21.5/--- °C
25 /1711.25 MHz	cheek	0.862 W/kg	--- W/kg	0.063/---	1.6 W/kg	21.5/--- °C

Table 17: Test results (Head SAR CDMA AWS 1700MHz)

The table contains the measured SAR values averaged over a mass of 1 g					
Channel / frequency	Position	Body worn	Power Drift (dB)	Limit	Liquid temperature
HUAWEI M580 Slide Open (RC3 , SO32)					
450 / 1732.5 MHz	front	0.445 W/kg	0.078	1.6 W/kg	21.8 °C
450 / 1732.5 MHz	rear	0.746 W/kg	-0.005	1.6 W/kg	21.8 °C
HUAWEI M580 Slide Close (RC3 , SO32)					
450 / 1732.5 MHz	front	0.205 W/kg	-0.135	1.6 W/kg	21.8 °C
450 / 1732.5 MHz	rear	0.709 W/kg	-0.027	1.6 W/kg	21.8 °C
HUAWEI M580 Slide Open (RC3 , SO32)					
850 / 1752.25 MHz	rear	0.777 W/kg	-0.151	1.6 W/kg	21.8 °C
25 / 1711.25 MHz	rear	0.705 W/kg	-0.065	1.6 W/kg	21.8 °C
HUAWEI M580 with Headset Slide Open (RC3 , SO55)					
850 / 1752.25 MHz	rear	0.736 W/kg	-0.135	1.6 W/kg	21.8 °C
HUAWEI M580 with Bluetooth Headset Slide Open (RC3 , SO55)					
850 / 1752.25 MHz	rear	0.816 W/kg	0.024	1.6 W/kg	21.8 °C

Table 18: Test results (Body SAR CDMA AWS 1700MHz)

- Note: 1) The value with blue colour is the maximum SAR value of each test band.
 2) Upper and lower frequencies were measured at the worst position.
 3) The SAR test shall be performed at the high, middle and low frequency channels of each operating mode. If the SAR measured at mid-band channel for each test configuration is at least 3.0 dB lower than the SAR limit (< 0.8 W/kg), testing at the high and low channels is optional.
 4) Tests in body position were performed with 15 mm air gap between DUT and SAM to simulate the use of a non-metallic belt-clip or holster.
 5) The addition body test was performed at worst case.

CDMA 1900MHz

The table contains the measured SAR values averaged over a mass of 1 g						
Channel / frequency	Position	Left hand position	Right hand position	Power Drift (dB)	Limit	Liquid temperature
HUAWEI M580 Slide Open (RC3 , SO55)						
600 / 1880 MHz	cheek	0.989 W/kg	0.644 W/kg	-0.163/-0.023	1.6 W/kg	21.5/21.5 °C
600 / 1880 MHz	tilted15°	0.339 W/kg	0.424 W/kg	-0.002/-0.004	1.6 W/kg	21.5/21.5 °C
HUAWEI M580 Slide Close (RC3 , SO55)						
600 / 1880 MHz	cheek	0.802 W/kg	0.462 W/kg	-0.146/0.190	1.6 W/kg	21.5/21.5 °C
600 / 1880 MHz	tilted15°	0.217 W/kg	0.251 W/kg	0.061/0.188	1.6 W/kg	21.5/21.5 °C
HUAWEI M580 Slide Open (RC3 , SO55)						
1175/1908.75MHz	cheek	0.904 W/kg	--- W/kg	-0.088/---	1.6 W/kg	21.5/--- °C

Test report no.: SYBH(Z-SAR)005022011-2

25 / 1851.25 MHz	cheek	0.849 W/kg	--- W/kg	-0.102/---	1.6 W/kg	21.5/--- °C
HUAWEI M580 Slide Close (RC3 , SO55)						
1175/1908.75MHz	cheek	0.821 W/kg	--- W/kg	0.059/---	1.6 W/kg	21.5/--- °C
25 / 1851.25 MHz	cheek	0.819 W/kg	--- W/kg	0.006/---	1.6 W/kg	21.5/--- °C

Table 19: Test results (Head SAR CDMA1900MHz)

The table contains the measured SAR values averaged over a mass of 1 g					
Channel / frequency	Position	Body worn	Power Drift (dB)	Limit	Liquid temperature
HUAWEI M580 Slide Open (RC3 , SO32)					
600 / 1880 MHz	front	0.394 W/kg	-0.120	1.6 W/kg	21.8 °C
600 / 1880 MHz	rear	0.638 W/kg	-0.141	1.6 W/kg	21.8 °C
HUAWEI M580 Slide Close (RC3 , SO32)					
600 / 1880 MHz	front	0.152 W/kg	0.006	1.6 W/kg	21.8 °C
600 / 1880 MHz	rear	0.551 W/kg	-0.088	1.6 W/kg	21.8 °C
HUAWEI M580 Slide Open (RC3 , SO32)					
1175 / 1908.75 MHz	rear	0.648 W/kg	-0.091	1.6 W/kg	21.8 °C
25 / 1851.25 MHz	rear	0.701 W/kg	-0.105	1.6 W/kg	21.8 °C
HUAWEI M580 with Headset Slide Open (RC3 , SO55)					
25 / 1851.25 MHz	rear	0.680 W/kg	-0.089	1.6 W/kg	21.8 °C
HUAWEI M580 with Bluetooth Headset Slide Open (RC3 , SO55)					
25 / 1851.25 MHz	rear	0.657 W/kg	0.075	1.6 W/kg	21.8 °C

Table 20: Test results (Body SAR CDMA1900MHz)

Note: 1) The value with blue colour is the maximum SAR value of each test band.

2) Upper and lower frequencies were measured at the worst position.

3) The SAR test shall be performed at the high, middle and low frequency channels of each operating mode. If the SAR measured at mid-band channel for each test configuration is at least 3.0 dB lower than the SAR limit (< 0.8 W/kg), testing at the high and low channels is optional.

4) Tests in body position were performed with 15 mm air gap between DUT and SAM to simulate the use of a non-metallic belt-clip or holster.

5) The addition body test was performed at worst case.

2.5.3 Extrapolated SAR Values

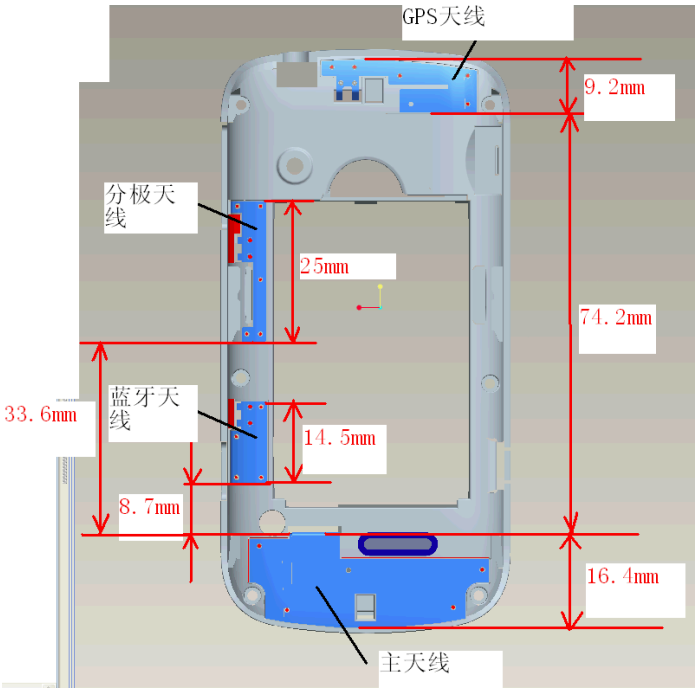
Limit of SAR (W/kg)		Conducted Power	1g Average	Tune-up procedures maximum Power(dBm)	1g Average
			1.6		1.6
Worst Case		Measurement Result(dBm)	Measurement Result(W/kg)		Extrapolated Result (W/kg)
Test Position	Channel				
Head CDMA 800 Open (RC3 , SO55)					
Left hand touched	Middle	24.3	0.838	25.5	1.105
Body CDMA 800 Open (RC3 , SO32)					
Rear	Middle	24.3	1.090	25.5	1.437
Body CDMA 800 Open (RC3 , SO55)					
Rear	Middle	24.3	1.080	25.5	1.424
Head CDMA AWS 1700 Close (RC3 , SO55)					
Left hand touched	High	24.3	1.060	25.5	1.397
Body CDMA AWS 1700 Open (RC3 , SO32)					
Rear	High	24.3	0.777	25.5	1.024
Body CDMA AWS 1700 Open (RC3 , SO55)					
Rear	High	24.3	0.816	25.5	1.076
Head CDMA 1900 Open (RC3 , SO55)					
Left hand touched	Middle	24.4	0.989	25.5	1.274
Body CDMA 1900 Open (RC3 , SO32)					
Rear	Low	24.3	0.701	25.5	0.924
Body CDMA 1900 Open (RC3 , SO55)					
Rear	Low	24.3	0.680	25.5	0.896

Table 21: Extrapolated SAR Values of highest measured SAR

2.5.4 Multiple Transmitter Information

BT Function

The closest distance between BT antenna and main antenna is 0.87 cm<5 cm, and the location of the antennas inside mobile phone is shown as below picture:



The output power of BT antenna is as following:

Channel	Ch 0 2402 MHz	Ch 39 2441 Mhz	Ch 78 2480 MHz
Peak Conducted Output Power(dBm)	6.82	7.59	7.92

The Max SAR Value of CDMA is as following:

Band	SAR _{1g} (W/kg)	
	Head	Body
CDMA 800	0.838	1.090
CDMA AWS	1.060	0.816
CDMA 1900	0.989	0.701

The following tables' list information which is relevant for the decision if a simultaneous transmit evaluation is necessary according to KDB 648474.

Stand-alone SAR

For Max Peak Conducted Output Power is 7.92dBm equivalent to 6.19mW, which is $\leq P_{Ref}$ (12mW), and the max 1g SAR value of CDMA is 1.090W/kg, According to the output power measurement result and the max 1g SAR value of main antenna, we can draw the conclusion that:

- 1) Stand-alone SAR are not required for BT, because output $\leq P_{Ref}$ and antenna is < 2.5 cm from other antennas, each with 1-g SAR < 1.2 W/kg .

Simultaneous SAR

- 1) About BT and CDMA, stand-alone SAR are not required for BT and the sum of the 1-g SAR is < 1.6 W/kg for all simultaneous transmitting antennas, so no simultaneous transmission SAR for BT and main antenna.

Annex 1 System performance verification

Date/Time: 2/21/2011 8:51:57 AM, Date/Time: 2/21/2011 9:28:42 AM

SystemPerformanceCheck-D835-ES-Head**DUT: Dipole 835 MHz D835V2; Type: D835V2; Serial: D835V2 - SN: 4d059**

Communication System: CW; Frequency: 835 MHz

Medium parameters used: $f = 835$ MHz; $\sigma = 0.878$ mho/m; $\epsilon_r = 41.3$; $\rho = 1000$ kg/m³

Phantom section: Flat Section

Measurement Standard: DASY5 (IEEE/IEC/ANSI C63.19-2007)

DASY5 Configuration:

Probe: ES3DV3 - SN3168; ConvF(5.98, 5.98, 5.98); Calibrated: 12/23/2010

Sensor-Surface: 4mm (Mechanical Surface Detection)

Electronics: DAE4 Sn852; Calibrated: 12/24/2010

Phantom: SAM2; Type: SAM; Serial: TP-1474

Measurement SW: DASY5, V5.2 Build 157; SEMCAD X Version 14.0 Build 57

Configuration/d=15mm, Pin=250mW/Area Scan (6x11x1): Measurement grid: dx=15mm, dy=15mm

Maximum value of SAR (measured) = 2.38 mW/g

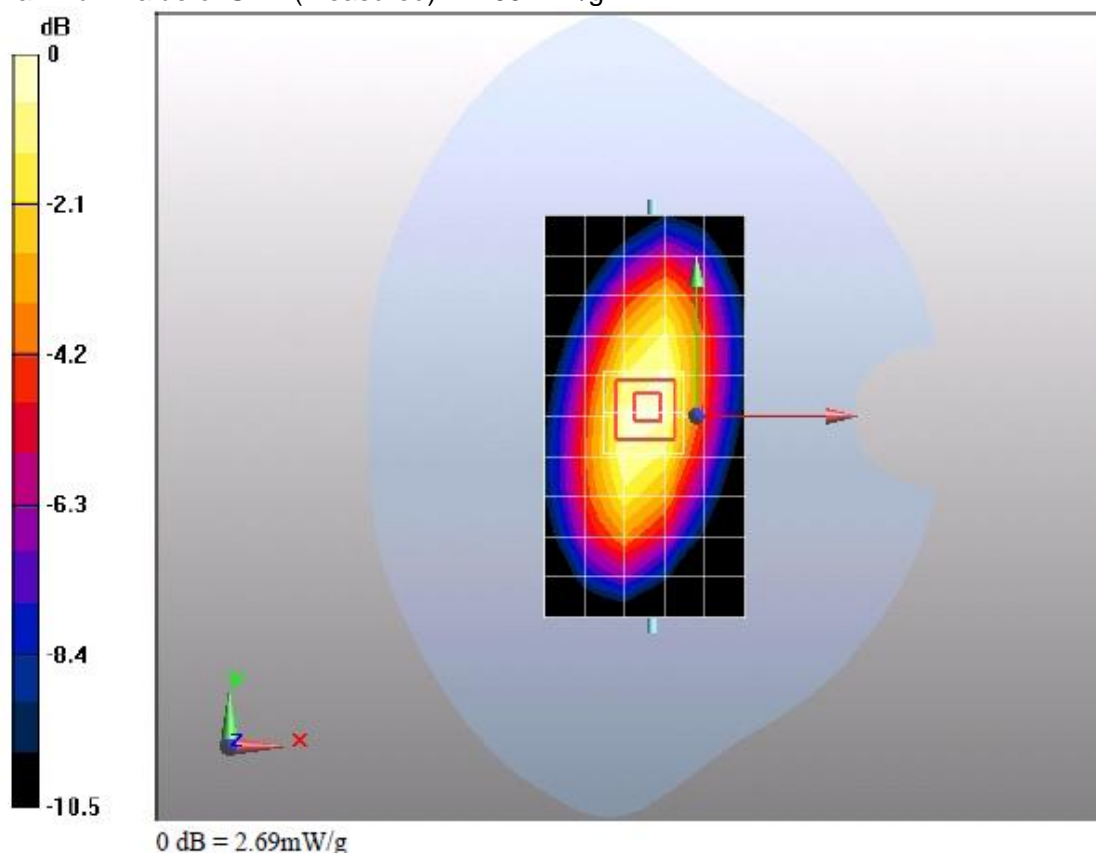
Configuration/d=15mm, Pin=250mW/Zoom Scan (7x7x7) (7x7x7)/Cube 0: Measurement grid: dx=5mm, dy=5mm, dz=5mm

Reference Value = 56.1 V/m; Power Drift = -0.012 dB

Peak SAR (extrapolated) = 3.66 W/kg

SAR(1 g) = 2.49 mW/g; SAR(10 g) = 1.64 mW/g

Maximum value of SAR (measured) = 2.69 mW/g

**Additional information:**

position or distance of DUT to SAM (if not standard head positions) :

ambient temperature: 23.0°C; liquid temperature: 22.2°C

Test report no.: SYBH(Z-SAR)005022011-2

Date/Time: 2/19/2011 8:41:32 AM, Date/Time: 2/19/2011 9:08:08 AM

SystemPerformanceCheck-D835-ES-Body**DUT: Dipole 835 MHz D835V2; Type: D835V2; Serial: D835V2 - SN: 4d059**

Communication System: CW; Frequency: 835 MHz

Medium parameters used: $f = 835$ MHz; $\sigma = 0.957$ mho/m; $\epsilon_r = 53.5$; $\rho = 1000$ kg/m³

Phantom section: Flat Section

Measurement Standard: DASY5 (IEEE/IEC/ANSI C63.19-2007)

DASY5 Configuration:

Probe: ES3DV3 - SN3168; ConvF(5.92, 5.92, 5.92); Calibrated: 12/23/2010

Sensor-Surface: 4mm (Mechanical Surface Detection)

Electronics: DAE4 Sn852; Calibrated: 12/24/2010

Phantom: SAM1; Type: SAM; Serial: TP-1475

Measurement SW: DASY5, V5.2 Build 157; SEMCAD X Version 14.0 Build 57

Configuration/d=15mm, Pin=250mW/Area Scan (6x11x1): Measurement grid: dx=15mm, dy=15mm

Maximum value of SAR (measured) = 2.44 mW/g

Configuration/d=15mm, Pin=250mW/Zoom Scan (7x7x7) (7x7x7)/Cube 0: Measurement grid:

dx=5mm,

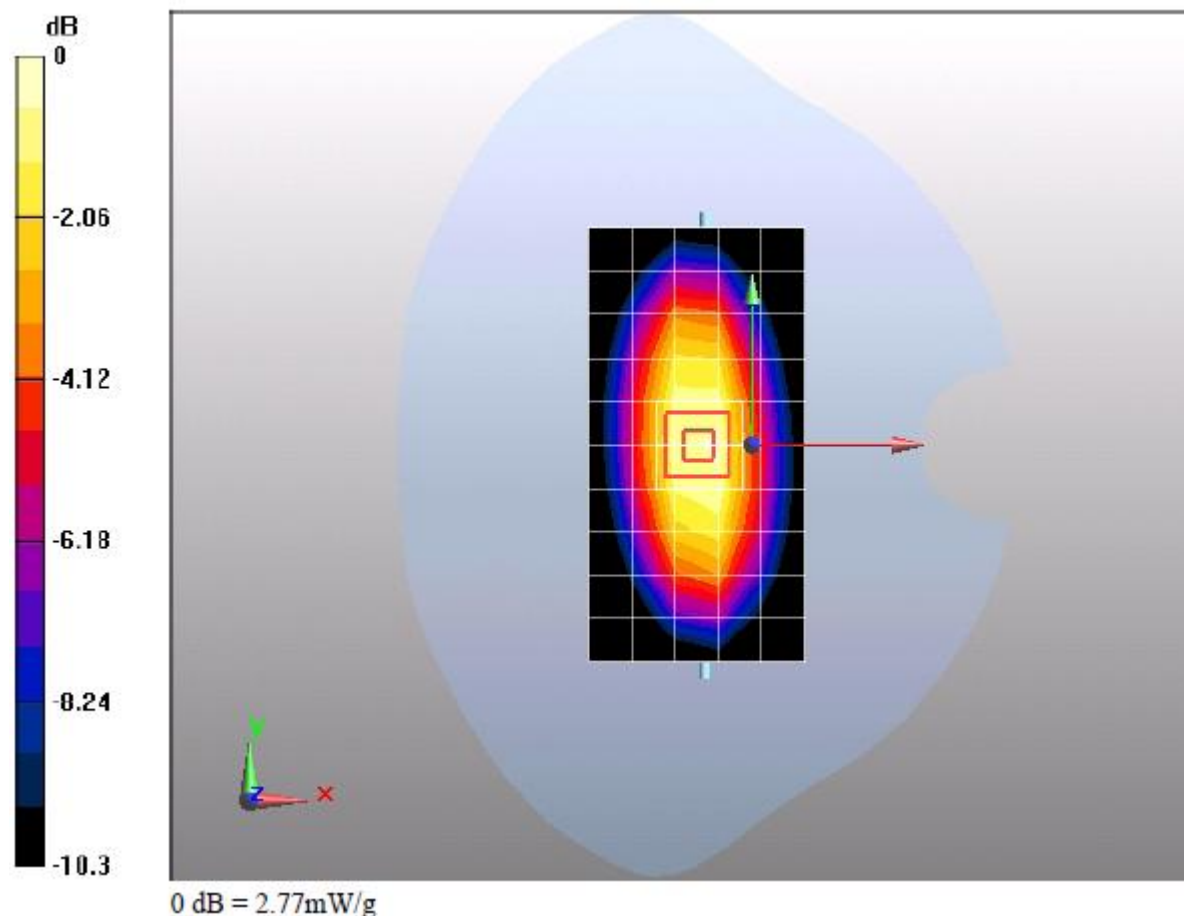
dy=5mm, dz=5mm

Reference Value = 54.6 V/m; Power Drift = -0.00864 dB

Peak SAR (extrapolated) = 3.71 W/kg

SAR(1 g) = 2.56 mW/g; SAR(10 g) = 1.68 mW/g

Maximum value of SAR (measured) = 2.77 mW/g

**Additional information:**

position or distance of DUT to SAM (if not standard head positions) :

ambient temperature: 23.0°C; liquid temperature: 22°C

Test report no.: SYBH(Z-SAR)005022011-2

Date/Time: 2/18/2011 4:01:47 AM, Date/Time: 2/18/2011 4:05:49 AM

SystemPerformanceCheck-D1800-ES-Head**DUT: Dipole 1800 MHz D1800V2; Type: D1800V2; Serial: D1800V2 - SN: 2d157**

Communication System: CW; Frequency: 1800 MHz

Medium parameters used: $f = 1800$ MHz; $\sigma = 1.44$ mho/m; $\epsilon_r = 41.5$; $\rho = 1000$ kg/m³

Phantom section: Flat Section

Measurement Standard: DASY5 (IEEE/IEC/ANSI C63.19-2007)

DASY5 Configuration:

Probe: ES3DV3 - SN3168; ConvF(5.12, 5.12, 5.12); Calibrated: 12/23/2010

Sensor-Surface: 4mm (Mechanical Surface Detection)

Electronics: DAE4 Sn852; Calibrated: 12/24/2010

Phantom: SAM2; Type: SAM; Serial: TP-1474

Measurement SW: DASY5, V5.2 Build 157; SEMCAD X Version 14.0 Build 57

Configuration/d=10mm, Pin=250mW/Area Scan (5x8x1): Measurement grid: dx=15mm, dy=15mm

Maximum value of SAR (measured) = 10.2 mW/g

Configuration/d=10mm, Pin=250mW/Zoom Scan (7x7x7) (7x7x7)/Cube 0: Measurement grid:

dx=5mm,

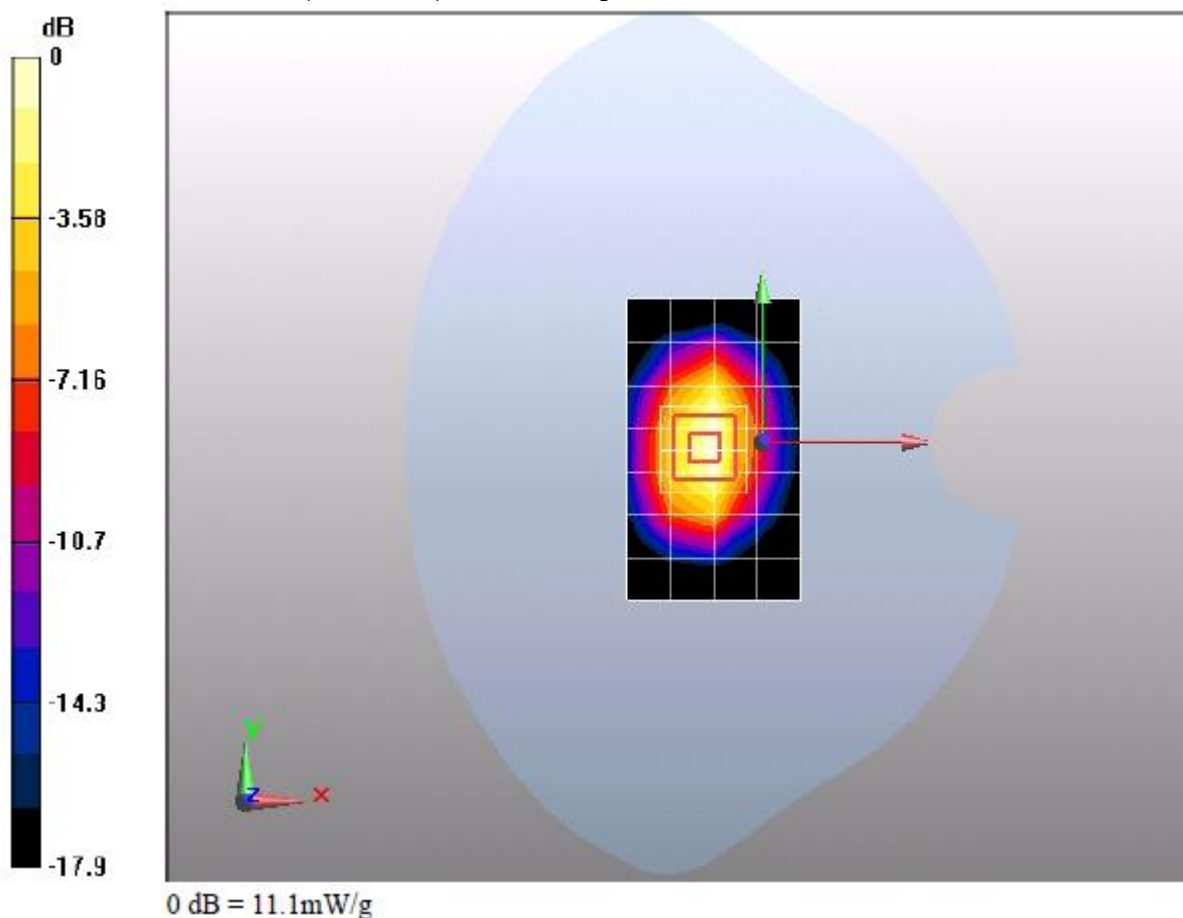
dy=5mm, dz=5mm

Reference Value = 87.9 V/m; Power Drift = 0.012 dB

Peak SAR (extrapolated) = 18.5 W/kg

SAR(1 g) = 9.9 mW/g; SAR(10 g) = 5.1 mW/g

Maximum value of SAR (measured) = 11.1 mW/g

**Additional information:**

position or distance of DUT to SAM (if not standard head positions) :

ambient temperature: 22.0°C; liquid temperature: 21.5°C

Test report no.: SYBH(Z-SAR)005022011-2

Date/Time: 2/18/2011 3:58:17 PM, Date/Time: 2/18/2011 4:02:21 PM

SystemPerformanceCheck-D1800-ES-Body**DUT: Dipole 1800 MHz D1800V2; Type: D1800V2; Serial: D1800V2 - SN: 2d157**

Communication System: CW; Frequency: 1800 MHz

Medium parameters used: $f = 1800$ MHz; $\sigma = 1.52$ mho/m; $\epsilon_r = 52.6$; $\rho = 1000$ kg/m³

Phantom section: Flat Section

Measurement Standard: DASY5 (IEEE/IEC/ANSI C63.19-2007)

DASY5 Configuration:

Probe: ES3DV3 - SN3168; ConvF(4.99, 4.99, 4.99); Calibrated: 12/23/2010

Sensor-Surface: 4mm (Mechanical Surface Detection)

Electronics: DAE4 Sn852; Calibrated: 12/24/2010

Phantom: SAM1; Type: SAM; Serial: TP-1475

Measurement SW: DASY5, V5.2 Build 157; SEMCAD X Version 14.0 Build 57

Configuration/d=10mm, Pin=250mW/Area Scan (5x8x1): Measurement grid: dx=15mm, dy=15mm

Maximum value of SAR (measured) = 10.6 mW/g

Configuration/d=10mm, Pin=250mW/Zoom Scan (7x7x7) (7x7x7)/Cube 0: Measurement grid:

dx=5mm,

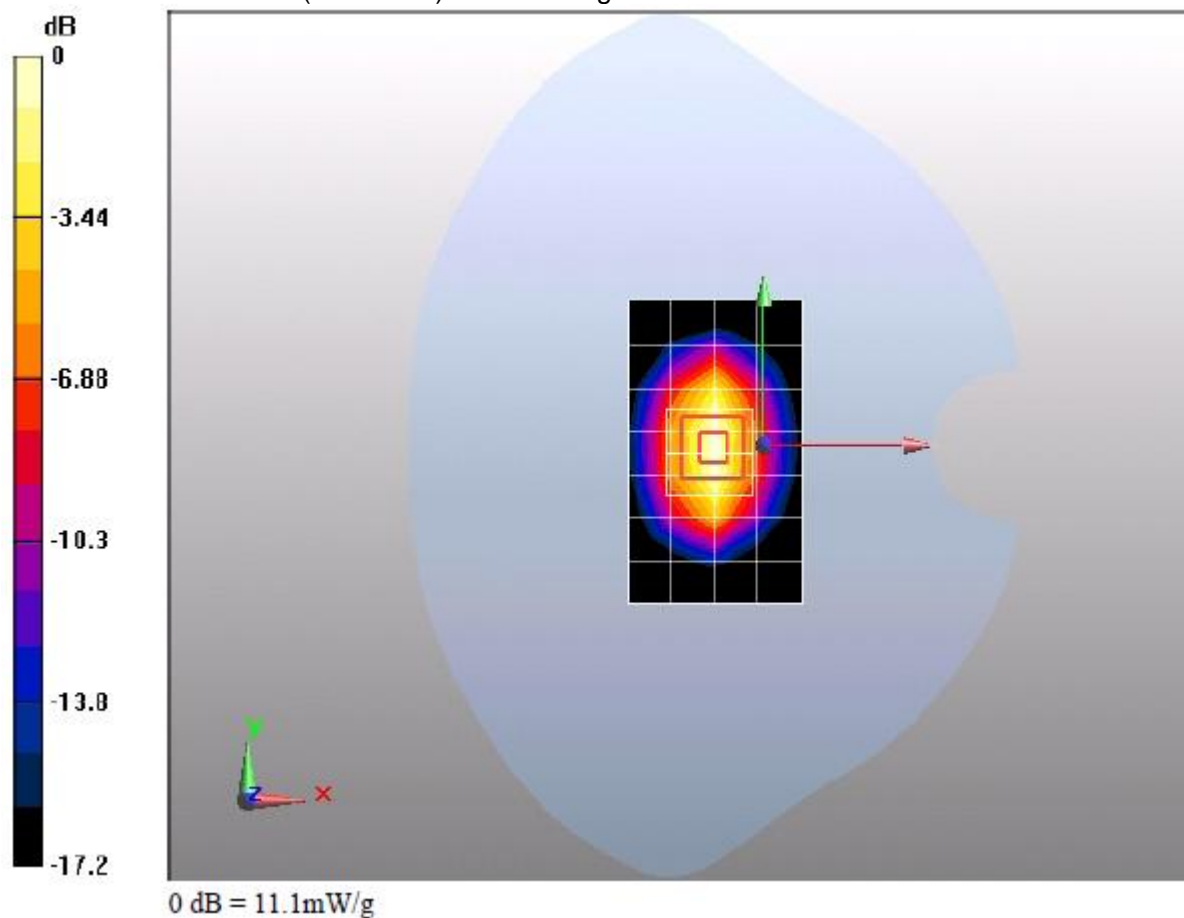
dy=5mm, dz=5mm

Reference Value = 87.6 V/m; Power Drift = -0.00461 dB

Peak SAR (extrapolated) = 17.8 W/kg

SAR(1 g) = 9.85 mW/g; SAR(10 g) = 5.14 mW/g

Maximum value of SAR (measured) = 11.1 mW/g

**Additional information:**

position or distance of DUT to SAM (if not standard head positions) :

ambient temperature: 22.0°C; liquid temperature: 21.8°C

Test report no.: SYBH(Z-SAR)005022011-2

Date/Time: 2/17/2011 9:27:52 AM, Date/Time: 2/17/2011 9:41:56 AM

SystemPerformanceCheck-D1900-ES-Head**DUT: Dipole 1900 MHz; Type: D1900V2; Serial: D1900V2 - SN: 5d091**

Communication System: CW; Frequency: 1900 MHz

Medium parameters used: $f = 1900$ MHz; $\sigma = 1.42$ mho/m; $\epsilon_r = 40.3$; $\rho = 1000$ kg/m³

Phantom section: Flat Section

Measurement Standard: DASY5 (IEEE/IEC/ANSI C63.19-2007)

DASY5 Configuration:

Probe: ES3DV3 - SN3168; ConvF(4.97, 4.97, 4.97); Calibrated: 12/23/2010

Sensor-Surface: 4mm (Mechanical Surface Detection)

Electronics: DAE4 Sn852; Calibrated: 12/24/2010

Phantom: SAM2; Type: SAM; Serial: TP-1474

Measurement SW: DASY5, V5.2 Build 157; SEMCAD X Version 14.0 Build 57

Configuration/d=10mm, Pin=250mW/Area Scan (5x8x1): Measurement grid: dx=15mm, dy=15mm

Maximum value of SAR (measured) = 11 mW/g

Configuration/d=10mm, Pin=250mW/Zoom Scan (7x7x7) (7x7x7)/Cube 0: Measurement grid:

dx=5mm,

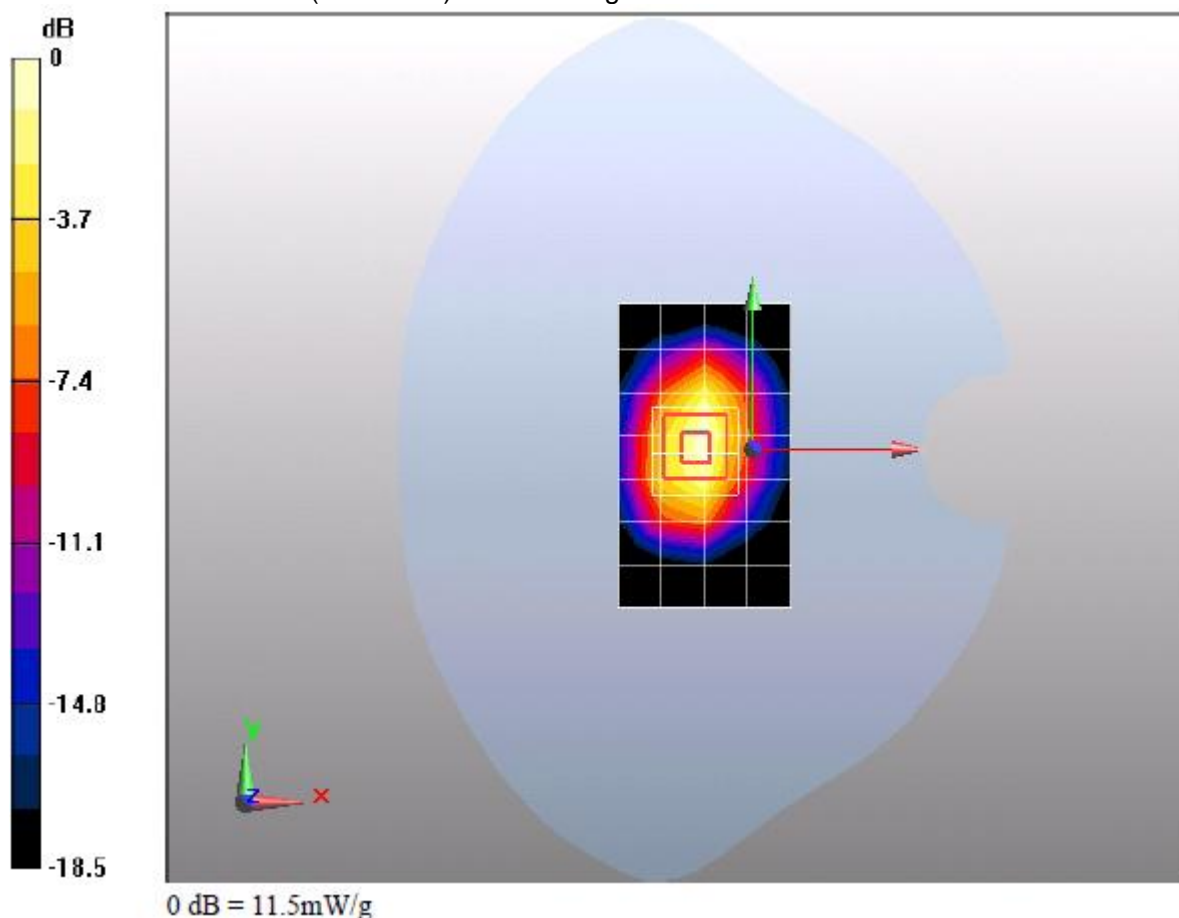
dy=5mm, dz=5mm

Reference Value = 89.7 V/m; Power Drift = 0.072 dB

Peak SAR (extrapolated) = 19.1 W/kg

SAR(1 g) = 10.2 mW/g; SAR(10 g) = 5.21 mW/g

Maximum value of SAR (measured) = 11.5 mW/g

**Additional information:**

position or distance of DUT to SAM (if not standard head positions) :

ambient temperature: 22.0°C; liquid temperature: 21.5°C

Test report no.: SYBH(Z-SAR)005022011-2

Date/Time: 2/17/2011 4:57:21 PM, Date/Time: 2/17/2011 5:01:24 PM

SystemPerformanceCheck-D1900-ES-Body**DUT: Dipole 1900 MHz; Type: D1900V2; Serial: D1900V2 - SN: 5d091**

Communication System: CW; Frequency: 1900 MHz

Medium parameters used: $f = 1900$ MHz; $\sigma = 1.53$ mho/m; $\epsilon_r = 52.6$; $\rho = 1000$ kg/m³

Phantom section: Flat Section

Measurement Standard: DASYS (IEEE/IEC/ANSI C63.19-2007)

DASY5 Configuration:

Probe: ES3DV3 - SN3168; ConvF(4.61, 4.61, 4.61); Calibrated: 12/23/2010

Sensor-Surface: 4mm (Mechanical Surface Detection)

Electronics: DAE4 Sn852; Calibrated: 12/24/2010

Phantom: SAM1; Type: SAM; Serial: TP-1475

Measurement SW: DASY5, V5.2 Build 157; SEMCAD X Version 14.0 Build 57

Configuration/d=10mm, Pin=250mW/Area Scan (5x8x1): Measurement grid: dx=15mm, dy=15mm

Maximum value of SAR (measured) = 11.5 mW/g

Configuration/d=10mm, Pin=250mW/Zoom Scan (7x7x7) (7x7x7)/Cube 0: Measurement grid:

dx=5mm,

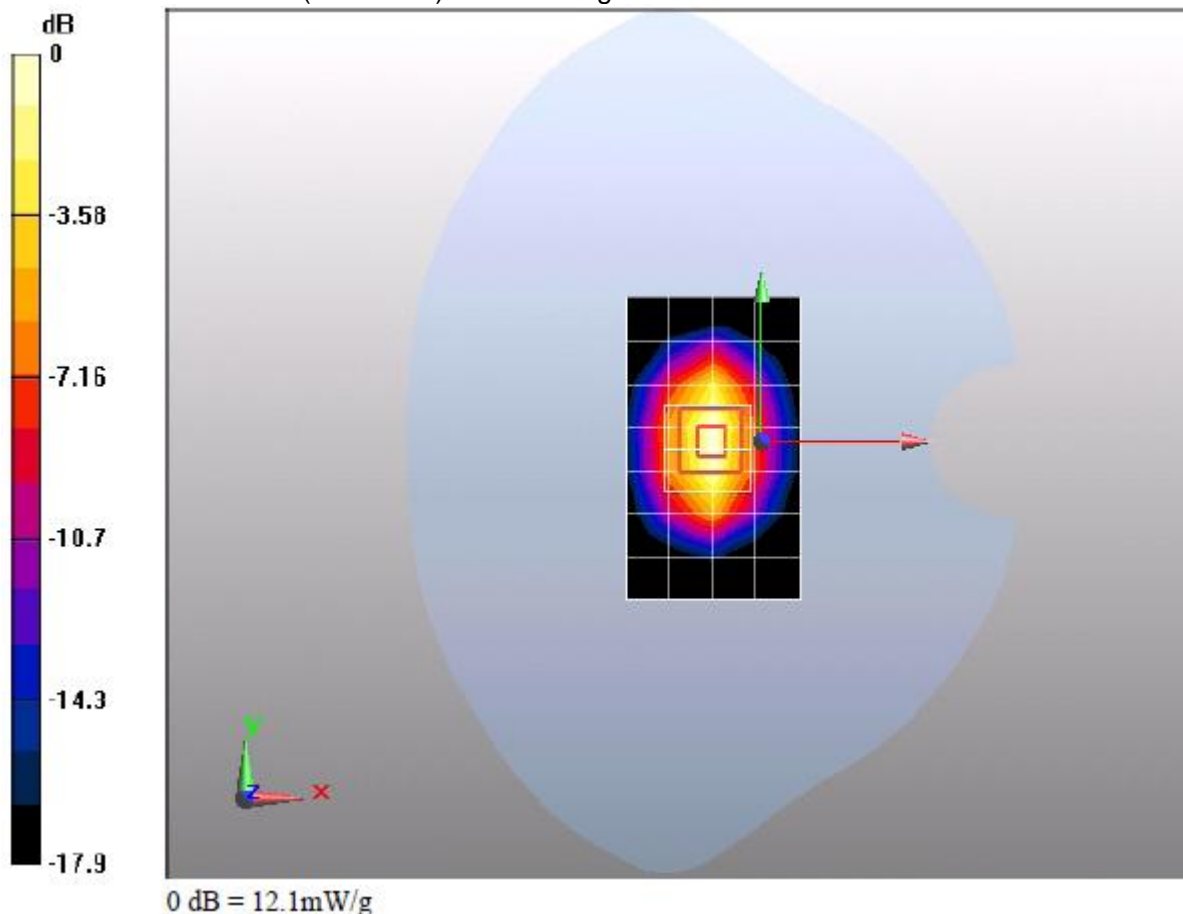
dy=5mm, dz=5mm

Reference Value = 90.9 V/m; Power Drift = 0.038 dB

Peak SAR (extrapolated) = 19.6 W/kg

SAR(1 g) = 10.7 mW/g; SAR(10 g) = 5.5 mW/g

Maximum value of SAR (measured) = 12.1 mW/g

**Additional information:**

position or distance of DUT to SAM (if not standard head positions) :

ambient temperature: 22.0°C; liquid temperature: 21.8°C

Annex 2 Measurement results (printout from DASY TM)**Remark: results of conducted power measurements: see chapter 2.5/2.6 (if applicable)****Annex 2.1 CDMA800MHz Head**

Date/Time: 2/21/2011 10:42:10 AM, Date/Time: 2/21/2011 10:56:35 AM

M580 CDMA 800 384CH Left hand touch check-Open**DUT: M580; Type: Handset; Serial: E3J2A11110700279**

Communication System: HW -CDMA2000; Frequency: 836.52 MHz

Medium parameters used (interpolated): $f = 836.52$ MHz; $\sigma = 0.878$ mho/m; $\epsilon_r = 41.7$; $\rho = 1000$ kg/m³

Phantom section: Left Section

Measurement Standard: DASY5 (IEEE/IEC/ANSI C63.19-2007)

DASY5 Configuration:

Probe: ES3DV3 - SN3168; ConvF(5.98, 5.98, 5.98); Calibrated: 12/23/2010

Sensor-Surface: 4mm (Mechanical Surface Detection)

Electronics: DAE4 Sn852; Calibrated: 12/24/2010

Phantom: SAM2; Type: SAM; Serial: TP-1474

Measurement SW: DASY5, V5.2 Build 157; SEMCAD X Version 14.0 Build 57

Configuration/Body/Area Scan (10x17x1): Measurement grid: dx=10mm, dy=10mm[Info: Interpolated medium parameters used for SAR evaluation.](#)

Maximum value of SAR (measured) = 0.872 mW/g

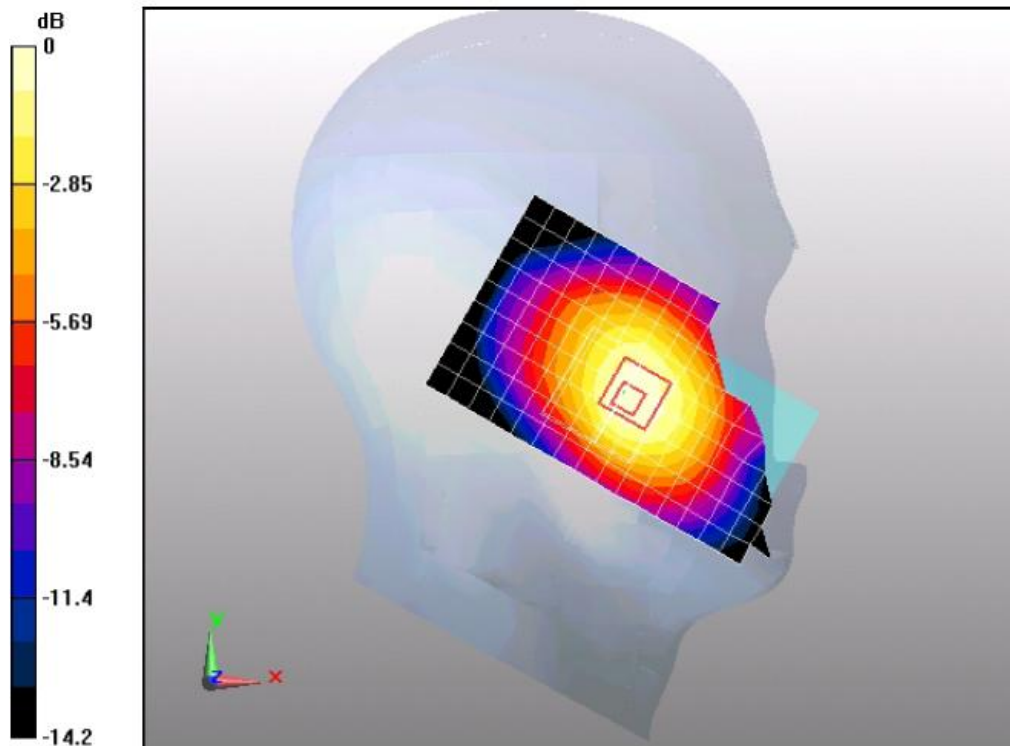
Configuration/Body/Zoom Scan (7x7x7)/Cube 0: Measurement grid: dx=5mm, dy=5mm, dz=5mm

Reference Value = 11.3 V/m; Power Drift = -0.000231 dB

Peak SAR (extrapolated) = 1.15 W/kg

SAR(1 g) = 0.838 mW/g; SAR(10 g) = 0.592 mW/g[Info: Interpolated medium parameters used for SAR evaluation.](#)

Maximum value of SAR (measured) = 0.878 mW/g



0 dB = 0.878mW/g

Additional information:

position or distance of DUT to SAM (if not standard head positions) :

ambient temperature: 23.0°C; liquid temperature: 22.2°C

Test report no.: SYBH(Z-SAR)005022011-2

Date/Time: 2/21/2011 11:09:11 AM, Date/Time: 2/21/2011 11:23:38 AM

M580 CDMA 800 384CH Left hand tilt 15 degree-Open**DUT: M580; Type: Handset; Serial: E3J2A11110700279**

Communication System: HW -CDMA2000; Frequency: 836.52 MHz

Medium parameters used (interpolated): $f = 836.52$ MHz; $\sigma = 0.878$ mho/m; $\epsilon_r = 41.7$; $\rho = 1000$ kg/m³

Phantom section: Left Section

Measurement Standard: DASY5 (IEEE/IEC/ANSI C63.19-2007)

DASY5 Configuration:

Probe: ES3DV3 - SN3168; ConvF(5.98, 5.98, 5.98); Calibrated: 12/23/2010

Sensor-Surface: 4mm (Mechanical Surface Detection)

Electronics: DAE4 Sn852; Calibrated: 12/24/2010

Phantom: SAM2; Type: SAM; Serial: TP-1474

Measurement SW: DASY5, V5.2 Build 157; SEMCAD X Version 14.0 Build 57

Configuration/Body/Area Scan (10x17x1): Measurement grid: dx=10mm, dy=10mm[Info: Interpolated medium parameters used for SAR evaluation.](#)

Maximum value of SAR (measured) = 0.495 mW/g

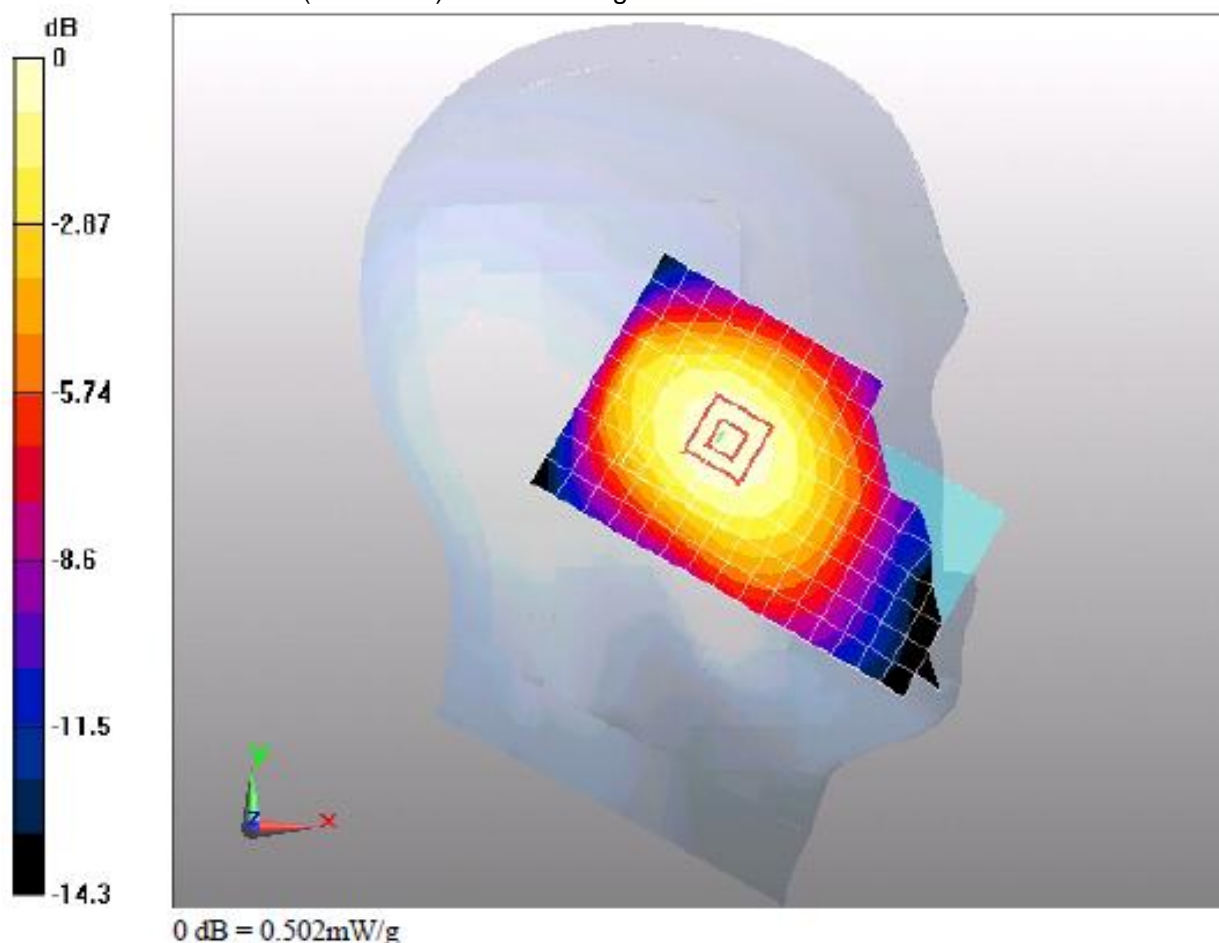
Configuration/Body/Zoom Scan (7x7x7)/Cube 0: Measurement grid: dx=5mm, dy=5mm, dz=5mm

Reference Value = 18.7 V/m; Power Drift = -0.076 dB

Peak SAR (extrapolated) = 0.599 W/kg

SAR(1 g) = 0.478 mW/g; SAR(10 g) = 0.359 mW/g[Info: Interpolated medium parameters used for SAR evaluation.](#)

Maximum value of SAR (measured) = 0.502 mW/g

**Additional information:**

position or distance of DUT to SAM (if not standard head positions) :

ambient temperature: 23.0°C; liquid temperature: 22.2°C

Test report no.: SYBH(Z-SAR)005022011-2

Date/Time: 2/21/2011 9:42:10 AM, Date/Time: 2/21/2011 9:55:26 AM

M580 CDMA 800 384CH Left hand touch check-Close**DUT: M580; Type: Handset; Serial: E3J2A11110700279**

Communication System: HW -CDMA2000; Frequency: 836.52 MHz

Medium parameters used (interpolated): $f = 836.52$ MHz; $\sigma = 0.875$ mho/m; $\epsilon_r = 41.3$; $\rho = 1000$ kg/m³

Phantom section: Left Section

Measurement Standard: DASY5 (IEEE/IEC/ANSI C63.19-2007)

DASY5 Configuration:

Probe: ES3DV3 - SN3168; ConvF(5.98, 5.98, 5.98); Calibrated: 12/23/2010

Sensor-Surface: 4mm (Mechanical Surface Detection)

Electronics: DAE4 Sn852; Calibrated: 12/24/2010

Phantom: SAM2; Type: SAM; Serial: TP-1474

Measurement SW: DASY5, V5.2 Build 157; SEMCAD X Version 14.0 Build 57

Configuration/Body/Area Scan (10x14x1): Measurement grid: dx=10mm, dy=10mm[Info: Interpolated medium parameters used for SAR evaluation.](#)

Maximum value of SAR (measured) = 0.592 mW/g

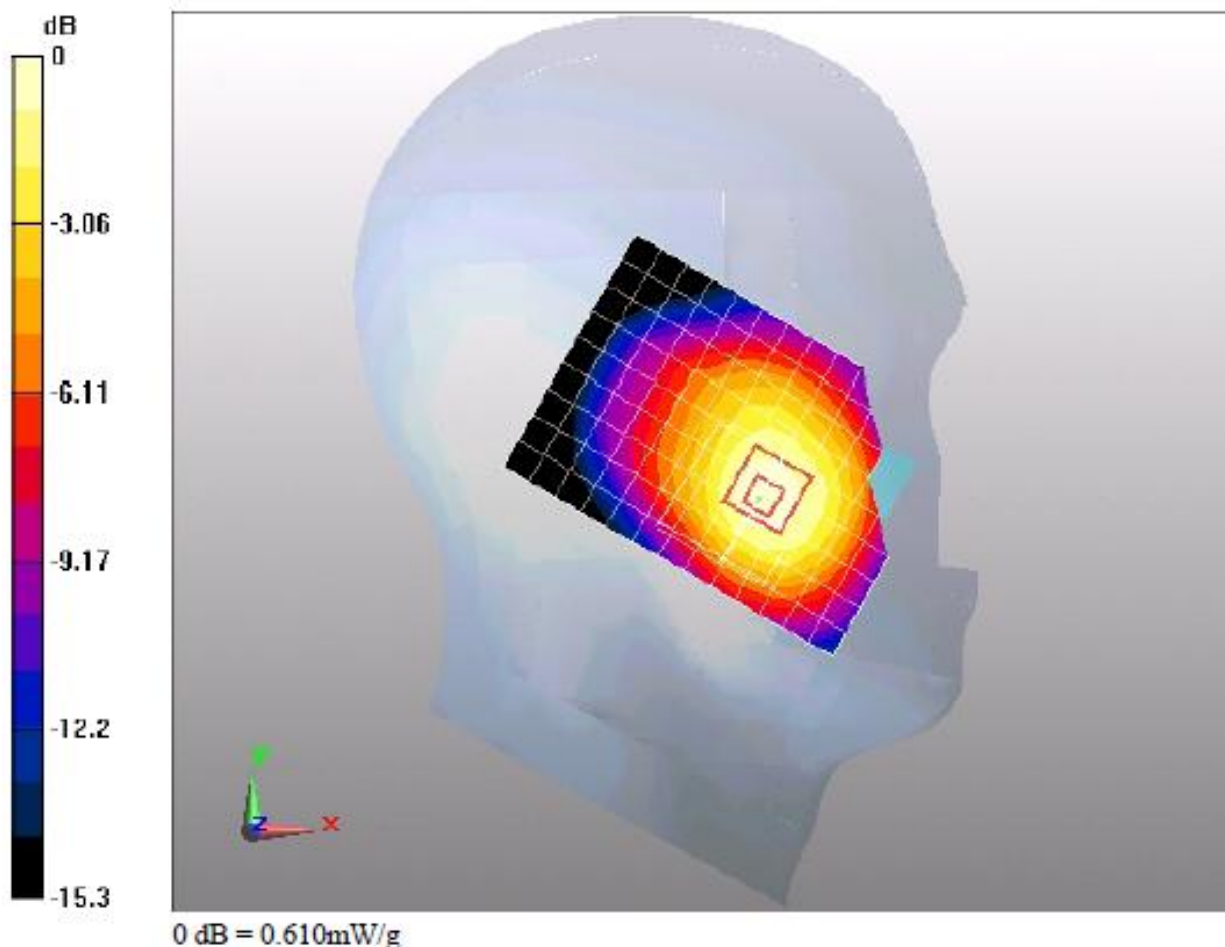
Configuration/Body/Zoom Scan (7x7x7)/Cube 0: Measurement grid: dx=5mm, dy=5mm, dz=5mm

Reference Value = 8.68 V/m; Power Drift = 0.022 dB

Peak SAR (extrapolated) = 0.775 W/kg

SAR(1 g) = 0.567 mW/g; SAR(10 g) = 0.396 mW/g[Info: Interpolated medium parameters used for SAR evaluation.](#)

Maximum value of SAR (measured) = 0.610 mW/g

**Additional information:**

position or distance of DUT to SAM (if not standard head positions) :

ambient temperature: 23.0°C; liquid temperature: 22.2°C

Test report no.: SYBH(Z-SAR)005022011-2

Date/Time: 2/21/2011 10:14:56 AM, Date/Time: 2/21/2011 10:28:12 AM

M580 CDMA 800 384CH Left hand tilt 15 degree-Close**DUT: M580; Type: Handset; Serial: E3J2A11110700279**

Communication System: HW -CDMA2000; Frequency: 836.52 MHz

Medium parameters used (interpolated): $f = 836.52$ MHz; $\sigma = 0.878$ mho/m; $\epsilon_r = 41.7$; $\rho = 1000$ kg/m³

Phantom section: Left Section

Measurement Standard: DASY5 (IEEE/IEC/ANSI C63.19-2007)

DASY5 Configuration:

Probe: ES3DV3 - SN3168; ConvF(5.98, 5.98, 5.98); Calibrated: 12/23/2010

Sensor-Surface: 4mm (Mechanical Surface Detection)

Electronics: DAE4 Sn852; Calibrated: 12/24/2010

Phantom: SAM2; Type: SAM; Serial: TP-1474

Measurement SW: DASY5, V5.2 Build 157; SEMCAD X Version 14.0 Build 57

Configuration/Body/Area Scan (10x14x1): Measurement grid: dx=10mm, dy=10mm[Info: Interpolated medium parameters used for SAR evaluation.](#)

Maximum value of SAR (measured) = 0.465 mW/g

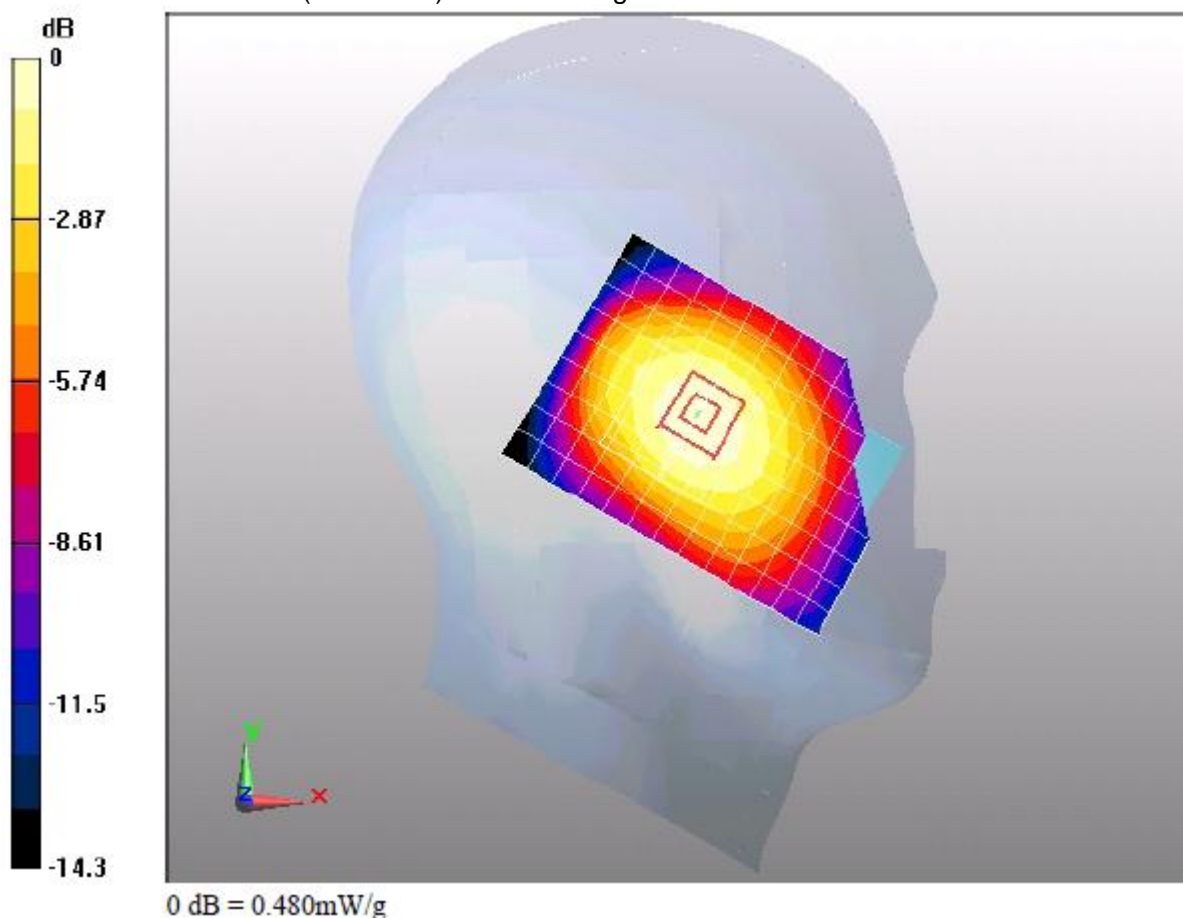
Configuration/Body/Zoom Scan (7x7x7)/Cube 0: Measurement grid: dx=5mm, dy=5mm, dz=5mm

Reference Value = 18.3 V/m; Power Drift = 0.100 dB

Peak SAR (extrapolated) = 0.573 W/kg

SAR(1 g) = 0.451 mW/g; SAR(10 g) = 0.334 mW/g[Info: Interpolated medium parameters used for SAR evaluation.](#)

Maximum value of SAR (measured) = 0.480 mW/g

**Additional information:**

position or distance of DUT to SAM (if not standard head positions) :

ambient temperature: 23.0°C; liquid temperature: 22.2°C

Test report no.: SYBH(Z-SAR)005022011-2

Date/Time: 2/21/2011 5:10:51 PM, Date/Time: 2/21/2011 5:25:18 PM

M580 CDMA 800 384CH Right hand touch cheek-Open**DUT: M580; Type: Handset; Serial: E3J2A11110700279**

Communication System: HW -CDMA2000; Frequency: 836.52 MHz

Medium parameters used (interpolated): $f = 836.52$ MHz; $\sigma = 0.878$ mho/m; $\epsilon_r = 41.7$; $\rho = 1000$ kg/m³

Phantom section: Right Section

Measurement Standard: DASY5 (IEEE/IEC/ANSI C63.19-2007)

DASY5 Configuration:

Probe: ES3DV3 - SN3168; ConvF(5.98, 5.98, 5.98); Calibrated: 12/23/2010

Sensor-Surface: 4mm (Mechanical Surface Detection)

Electronics: DAE4 Sn852; Calibrated: 12/24/2010

Phantom: SAM2; Type: SAM; Serial: TP-1474

Measurement SW: DASY5, V5.2 Build 157; SEMCAD X Version 14.0 Build 57

Configuration/Body/Area Scan (10x17x1): Measurement grid: dx=10mm, dy=10mm[Info: Interpolated medium parameters used for SAR evaluation.](#)

Maximum value of SAR (measured) = 0.831 mW/g

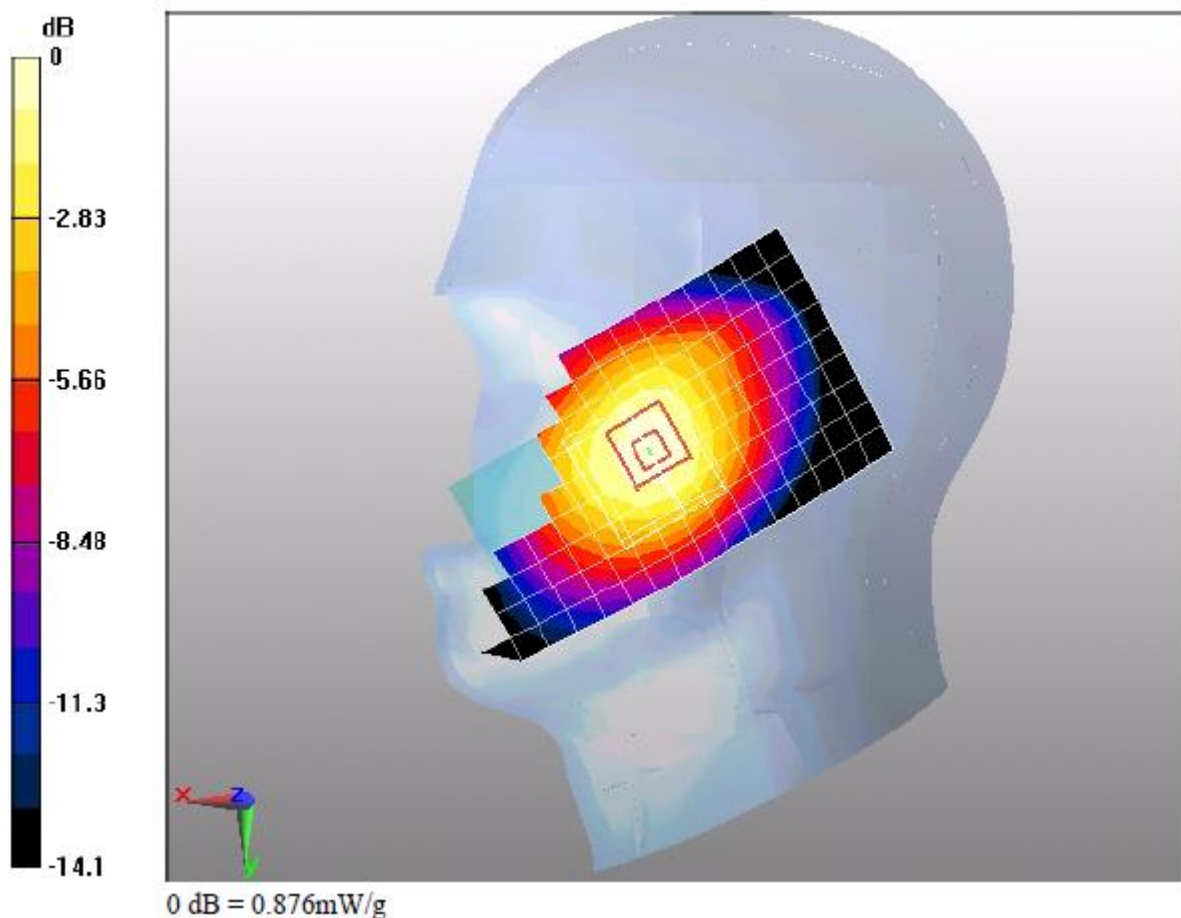
Configuration/Body/Zoom Scan (7x7x7)/Cube 0: Measurement grid: dx=5mm, dy=5mm, dz=5mm

Reference Value = 10.3 V/m; Power Drift = 0.113 dB

Peak SAR (extrapolated) = 1.07 W/kg

SAR(1 g) = 0.818 mW/g; SAR(10 g) = 0.587 mW/g[Info: Interpolated medium parameters used for SAR evaluation.](#)

Maximum value of SAR (measured) = 0.876 mW/g

**Additional information:**

position or distance of DUT to SAM (if not standard head positions) :

ambient temperature: 23.0°C; liquid temperature: 22.2°C

Test report no.: SYBH(Z-SAR)005022011-2

Date/Time: 2/21/2011 5:37:06 PM, Date/Time: 2/21/2011 5:51:34 PM

M580 CDMA 800 384CH Right hand tilt 15 degree-Open**DUT: M580; Type: Handset; Serial: E3J2A11110700279**

Communication System: HW -CDMA2000; Frequency: 836.52 MHz

Medium parameters used (interpolated): $f = 836.52$ MHz; $\sigma = 0.878$ mho/m; $\epsilon_r = 41.7$; $\rho = 1000$ kg/m³

Phantom section: Right Section

Measurement Standard: DASY5 (IEEE/IEC/ANSI C63.19-2007)

DASY5 Configuration:

Probe: ES3DV3 - SN3168; ConvF(5.98, 5.98, 5.98); Calibrated: 12/23/2010

Sensor-Surface: 4mm (Mechanical Surface Detection)

Electronics: DAE4 Sn852; Calibrated: 12/24/2010

Phantom: SAM2; Type: SAM; Serial: TP-1474

Measurement SW: DASY5, V5.2 Build 157; SEMCAD X Version 14.0 Build 57

Configuration/Body/Area Scan (10x17x1): Measurement grid: dx=10mm, dy=10mm[Info: Interpolated medium parameters used for SAR evaluation.](#)

Maximum value of SAR (measured) = 0.533 mW/g

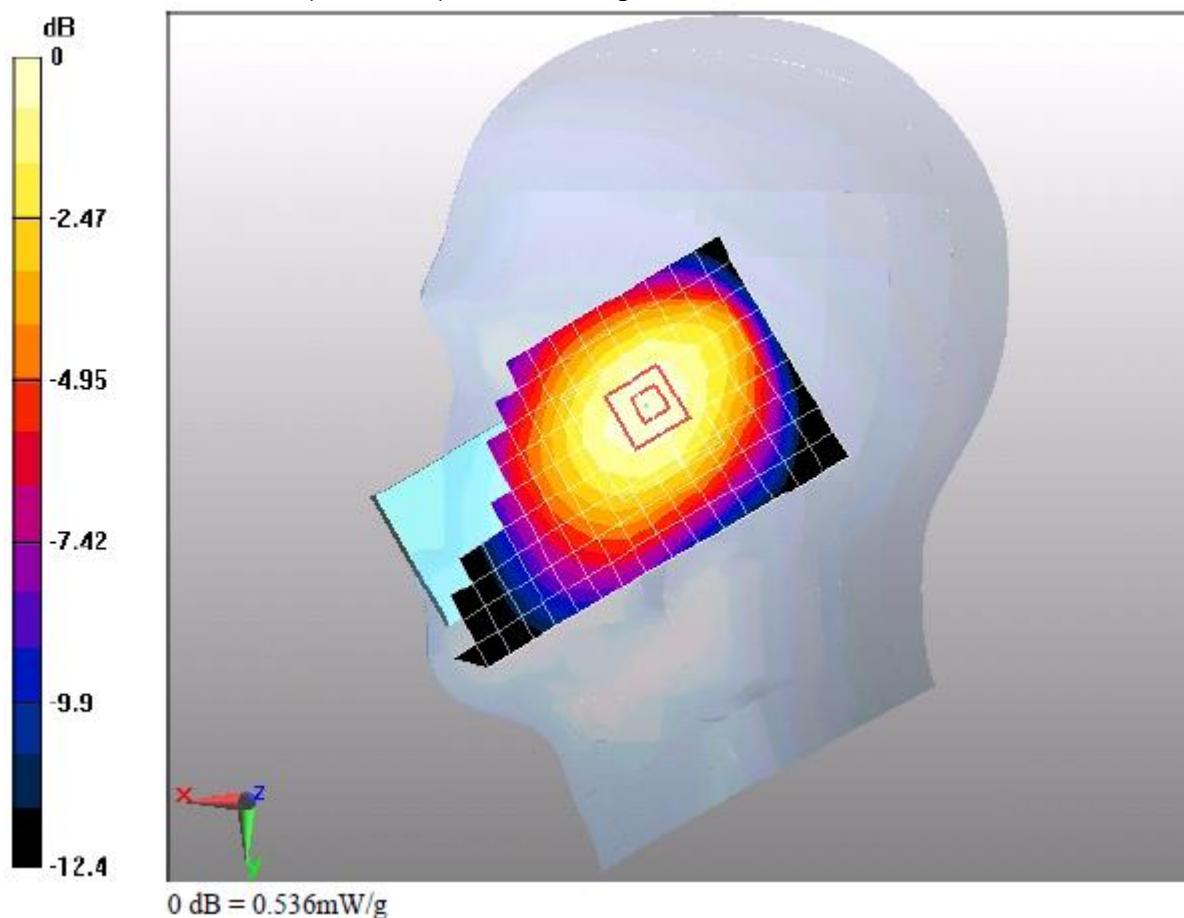
Configuration/Body/Zoom Scan (7x7x7)/Cube 0: Measurement grid: dx=5mm, dy=5mm, dz=5mm

Reference Value = 18.6 V/m; Power Drift = -0.020 dB

Peak SAR (extrapolated) = 0.638 W/kg

SAR(1 g) = 0.507 mW/g; SAR(10 g) = 0.380 mW/g[Info: Interpolated medium parameters used for SAR evaluation.](#)

Maximum value of SAR (measured) = 0.536 mW/g

**Additional information:**

position or distance of DUT to SAM (if not standard head positions) :

ambient temperature: 23.0°C; liquid temperature: 22.2°C

Test report no.: SYBH(Z-SAR)005022011-2

Date/Time: 2/21/2011 3:12:43 PM, Date/Time: 2/21/2011 3:25:57 PM

M580 CDMA 800 384CH Right hand touch cheek-Close**DUT: M580; Type: Handset; Serial: E3J2A11110700279**

Communication System: HW -CDMA2000; Frequency: 836.52 MHz

Medium parameters used (interpolated): $f = 836.52$ MHz; $\sigma = 0.878$ mho/m; $\epsilon_r = 41.7$; $\rho = 1000$ kg/m³

Phantom section: Right Section

Measurement Standard: DASY5 (IEEE/IEC/ANSI C63.19-2007)

DASY5 Configuration:

Probe: ES3DV3 - SN3168; ConvF(5.98, 5.98, 5.98); Calibrated: 12/23/2010

Sensor-Surface: 4mm (Mechanical Surface Detection)

Electronics: DAE4 Sn852; Calibrated: 12/24/2010

Phantom: SAM2; Type: SAM; Serial: TP-1474

Measurement SW: DASY5, V5.2 Build 157; SEMCAD X Version 14.0 Build 57

Configuration/Body/Area Scan (10x14x1): Measurement grid: dx=10mm, dy=10mm[Info: Interpolated medium parameters used for SAR evaluation.](#)

Maximum value of SAR (measured) = 0.527 mW/g

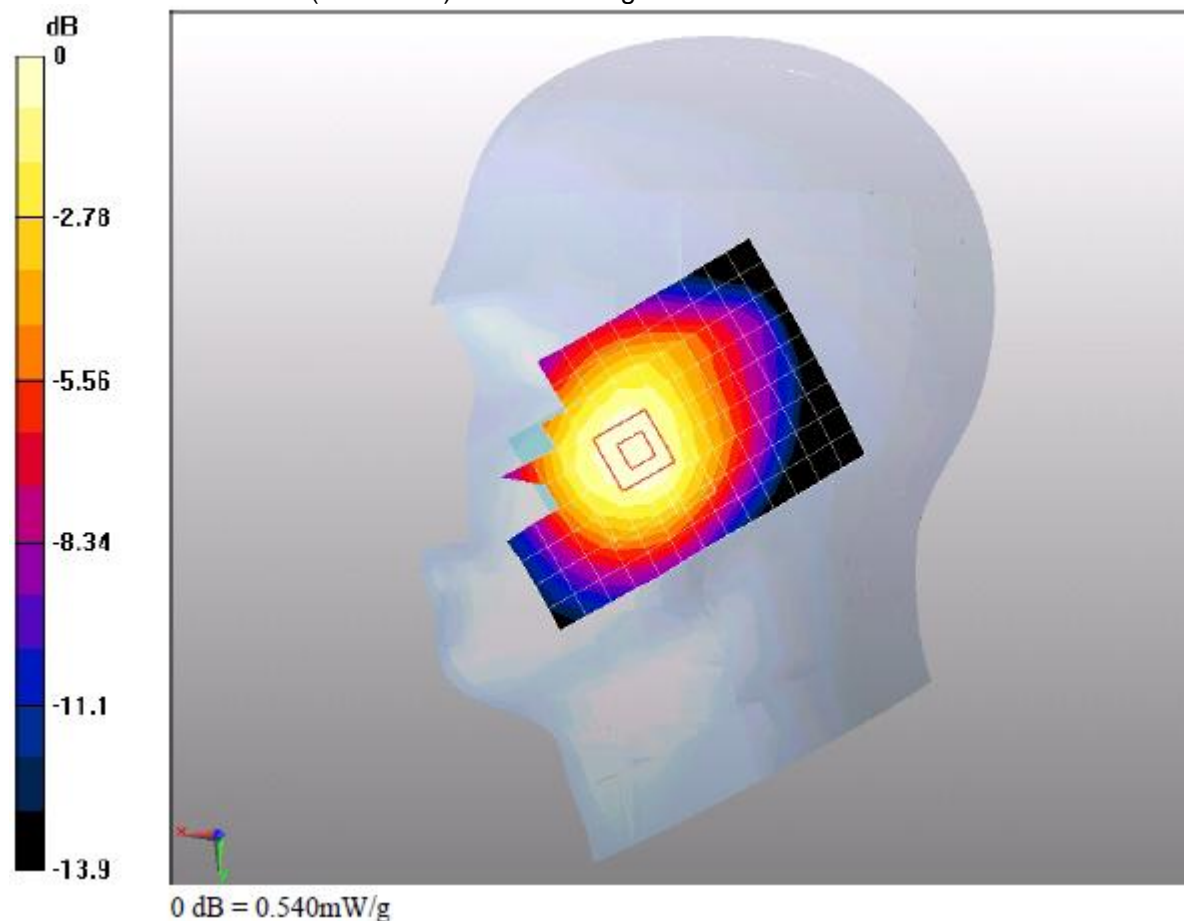
Configuration/Body/Zoom Scan (7x7x7)/Cube 0: Measurement grid: dx=5mm, dy=5mm, dz=5mm

Reference Value = 8.45 V/m; Power Drift = 0.077 dB

Peak SAR (extrapolated) = 0.669 W/kg

SAR(1 g) = 0.511 mW/g; SAR(10 g) = 0.370 mW/g[Info: Interpolated medium parameters used for SAR evaluation.](#)

Maximum value of SAR (measured) = 0.540 mW/g

**Additional information:**

position or distance of DUT to SAM (if not standard head positions) :

ambient temperature: 23.0°C; liquid temperature: 22.2°C

Test report no.: SYBH(Z-SAR)005022011-2

Date/Time: 2/21/2011 4:41:24 PM, Date/Time: 2/21/2011 4:54:37 PM

M580 CDMA 800 384CH Right hand tilt 15 degree-Close**DUT: M580; Type: Handset; Serial: E3J2A11110700279**

Communication System: HW -CDMA2000; Frequency: 836.52 MHz

Medium parameters used (interpolated): $f = 836.52$ MHz; $\sigma = 0.878$ mho/m; $\epsilon_r = 41.7$; $\rho = 1000$ kg/m³

Phantom section: Right Section

Measurement Standard: DASY5 (IEEE/IEC/ANSI C63.19-2007)

DASY5 Configuration:

Probe: ES3DV3 - SN3168; ConvF(5.98, 5.98, 5.98); Calibrated: 12/23/2010

Sensor-Surface: 4mm (Mechanical Surface Detection)

Electronics: DAE4 Sn852; Calibrated: 12/24/2010

Phantom: SAM2; Type: SAM; Serial: TP-1474

Measurement SW: DASY5, V5.2 Build 157; SEMCAD X Version 14.0 Build 57

Configuration/Body/Area Scan (10x14x1): Measurement grid: dx=10mm, dy=10mm[Info: Interpolated medium parameters used for SAR evaluation.](#)

Maximum value of SAR (measured) = 0.452 mW/g

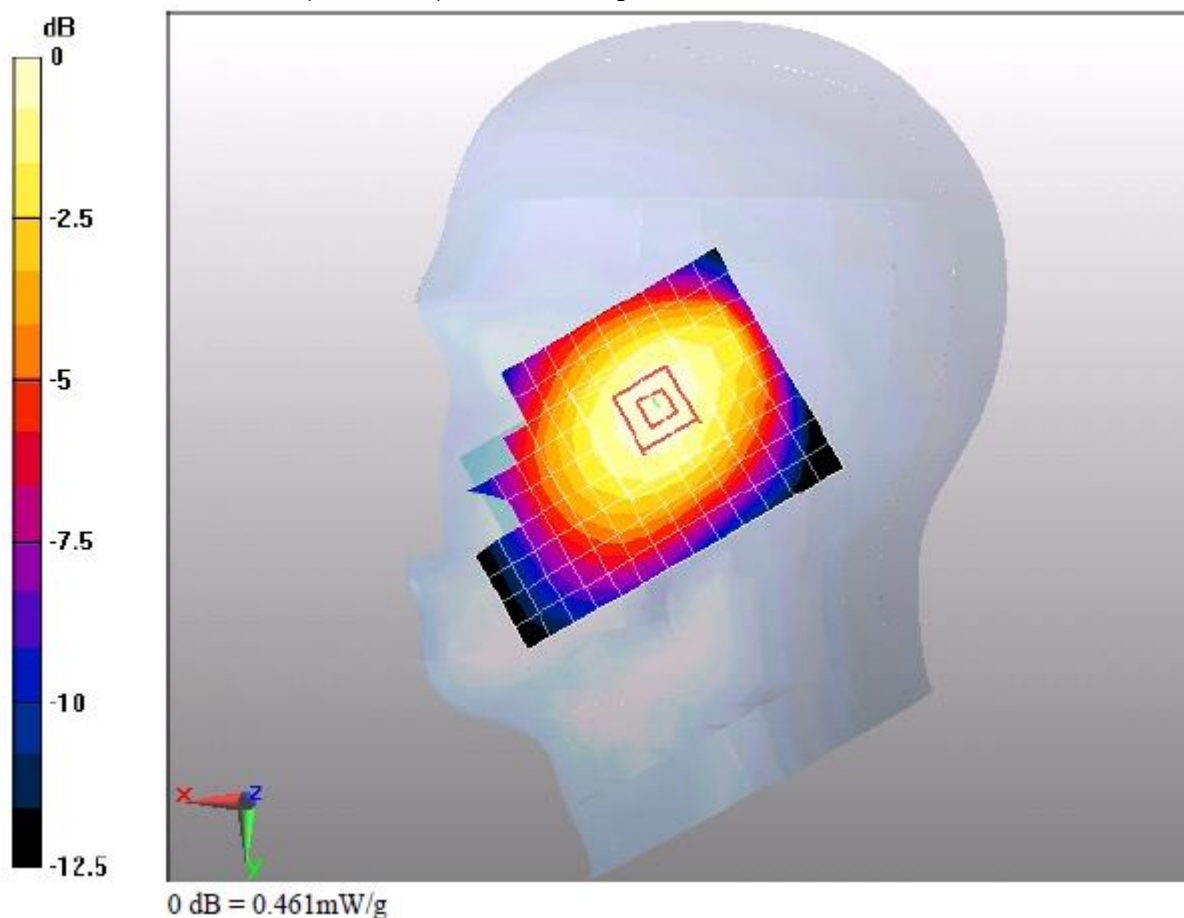
Configuration/Body/Zoom Scan (7x7x7)/Cube 0: Measurement grid: dx=5mm, dy=5mm, dz=5mm

Reference Value = 18.1 V/m; Power Drift = -0.063 dB

Peak SAR (extrapolated) = 0.554 W/kg

SAR(1 g) = 0.437 mW/g; SAR(10 g) = 0.328 mW/g[Info: Interpolated medium parameters used for SAR evaluation.](#)

Maximum value of SAR (measured) = 0.461 mW/g

**Additional information:**

position or distance of DUT to SAM (if not standard head positions) :

ambient temperature: 23.0°C; liquid temperature: 22.2°C

Test report no.: SYBH(Z-SAR)005022011-2

Date/Time: 2/21/2011 11:40:19 AM, Date/Time: 2/21/2011 11:54:44 AM

M580 CDMA 800 777CH Left hand touch check-Open**DUT: M580; Type: Handset; Serial: E3J2A11110700279**

Communication System: HW -CDMA2000; Frequency: 848.31 MHz

Medium parameters used (interpolated): $f = 848.31$ MHz; $\sigma = 0.883$ mho/m; $\epsilon_r = 41.4$; $\rho = 1000$ kg/m³

Phantom section: Left Section

Measurement Standard: DASY5 (IEEE/IEC/ANSI C63.19-2007)

DASY5 Configuration:

Probe: ES3DV3 - SN3168; ConvF(5.98, 5.98, 5.98); Calibrated: 12/23/2010

Sensor-Surface: 4mm (Mechanical Surface Detection)

Electronics: DAE4 Sn852; Calibrated: 12/24/2010

Phantom: SAM2; Type: SAM; Serial: TP-1474

Measurement SW: DASY5, V5.2 Build 157; SEMCAD X Version 14.0 Build 57

Configuration/Body/Area Scan (10x17x1): Measurement grid: dx=10mm, dy=10mm[Info: Interpolated medium parameters used for SAR evaluation.](#)

Maximum value of SAR (measured) = 0.721 mW/g

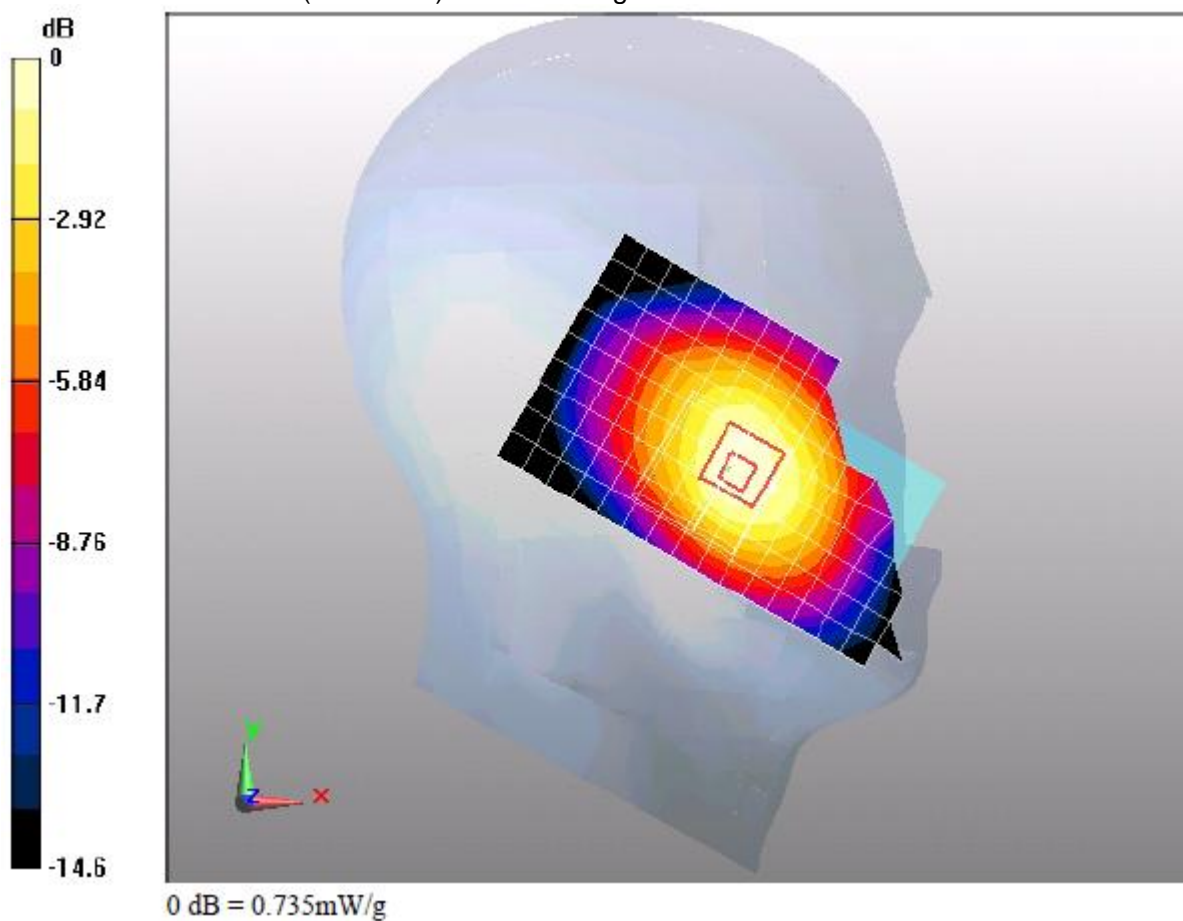
Configuration/Body/Zoom Scan (7x7x7)/Cube 0: Measurement grid: dx=5mm, dy=5mm, dz=5mm

Reference Value = 10.1 V/m; Power Drift = 0.044 dB

Peak SAR (extrapolated) = 0.949 W/kg

SAR(1 g) = 0.701 mW/g; SAR(10 g) = 0.497 mW/g[Info: Interpolated medium parameters used for SAR evaluation.](#)

Maximum value of SAR (measured) = 0.735 mW/g

**Additional information:**

position or distance of DUT to SAM (if not standard head positions) :

ambient temperature: 23.0°C; liquid temperature: 22.2°C

Test report no.: SYBH(Z-SAR)005022011-2

Date/Time: 2/21/2011 2:05:47 PM, Date/Time: 2/21/2011 2:20:42 PM

M580 CDMA 800 1013CH Left hand touch check-Open**DUT: M580; Type: Handset; Serial: E3J2A11110700279**

Communication System: HW -CDMA2000; Frequency: 824.7 MHz

Medium parameters used: $f = 825$ MHz; $\sigma = 0.876$ mho/m; $\epsilon_r = 41.5$; $\rho = 1000$ kg/m³

Phantom section: Left Section

Measurement Standard: DASY5 (IEEE/IEC/ANSI C63.19-2007)

DASY5 Configuration:

Probe: ES3DV3 - SN3168; ConvF(5.98, 5.98, 5.98); Calibrated: 12/23/2010

Sensor-Surface: 4mm (Mechanical Surface Detection)

Electronics: DAE4 Sn852; Calibrated: 12/24/2010

Phantom: SAM2; Type: SAM; Serial: TP-1474

Measurement SW: DASY5, V5.2 Build 157; SEMCAD X Version 14.0 Build 57

Configuration/Body/Area Scan (10x17x1): Measurement grid: dx=10mm, dy=10mm

Maximum value of SAR (measured) = 0.797 mW/g

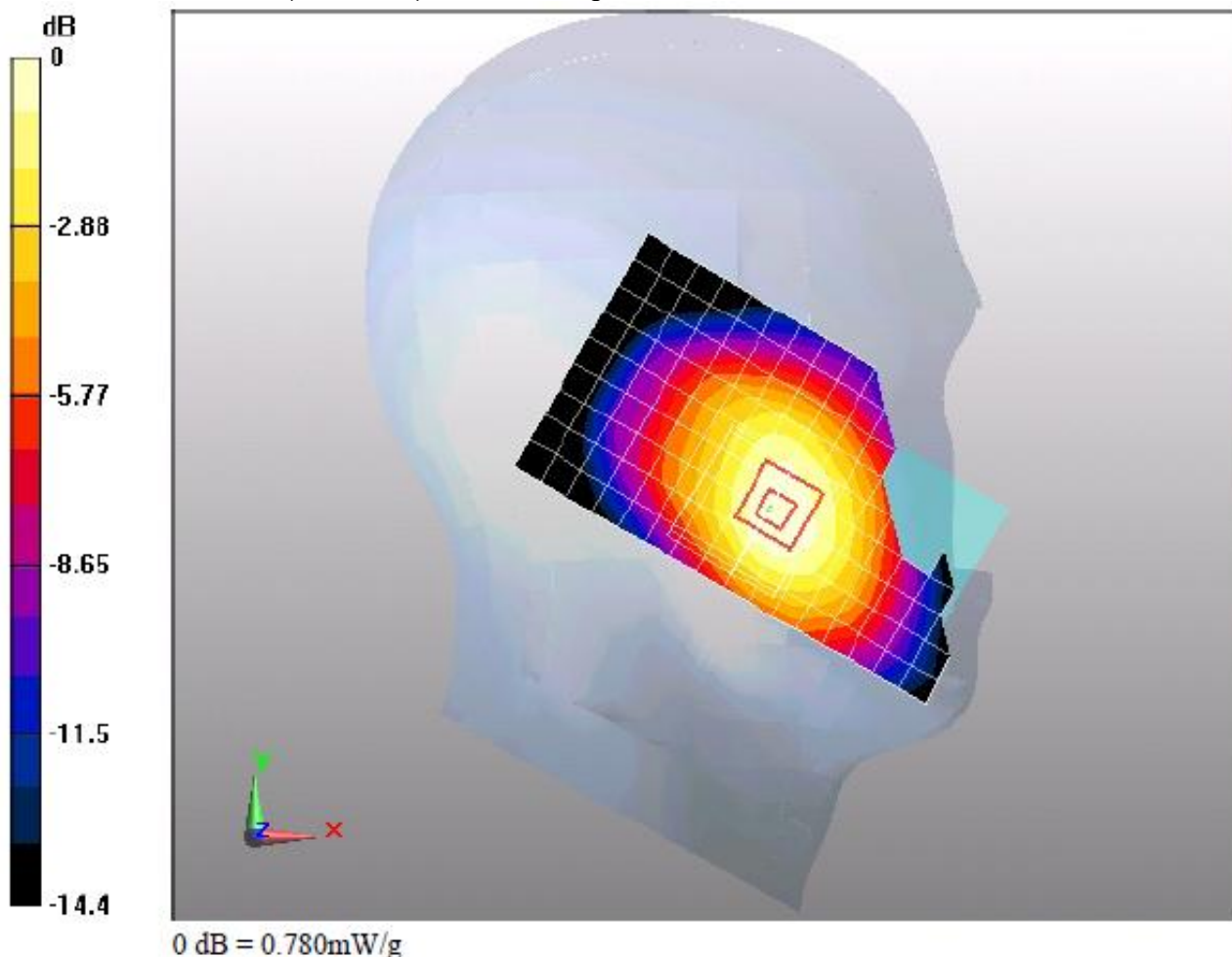
Configuration/Body/Zoom Scan (7x7x7)/Cube 0: Measurement grid: dx=5mm, dy=5mm, dz=5mm

Reference Value = 10.2 V/m; Power Drift = -0.133 dB

Peak SAR (extrapolated) = 0.978 W/kg

SAR(1 g) = 0.732 mW/g; SAR(10 g) = 0.524 mW/g

Maximum value of SAR (measured) = 0.780 mW/g

**Additional information:**

position or distance of DUT to SAM (if not standard head positions) :

ambient temperature: 23.0°C; liquid temperature: 22.2°C

Test report no.: SYBH(Z-SAR)005022011-2

Date/Time: 2/21/2011 7:12:22 PM, Date/Time: 2/21/2011 7:36:49 PM

M580 CDMA 800 777CH Right hand touch cheek-Open**DUT: M580; Type: Handset; Serial: E3J2A11110700279**

Communication System: HW -CDMA2000; Frequency: 848.31 MHz

Medium parameters used (interpolated): $f = 848.31$ MHz; $\sigma = 0.883$ mho/m; $\epsilon_r = 41.4$; $\rho = 1000$ kg/m³

Phantom section: Right Section

Measurement Standard: DASY5 (IEEE/IEC/ANSI C63.19-2007)

DASY5 Configuration:

Probe: ES3DV3 - SN3168; ConvF(5.98, 5.98, 5.98); Calibrated: 12/23/2010

Sensor-Surface: 4mm (Mechanical Surface Detection)

Electronics: DAE4 Sn852; Calibrated: 12/24/2010

Phantom: SAM2; Type: SAM; Serial: TP-1474

Measurement SW: DASY5, V5.2 Build 157; SEMCAD X Version 14.0 Build 57

Configuration/Body/Area Scan (10x17x1): Measurement grid: dx=10mm, dy=10mm[Info: Interpolated medium parameters used for SAR evaluation.](#)

Maximum value of SAR (measured) = 0.701 mW/g

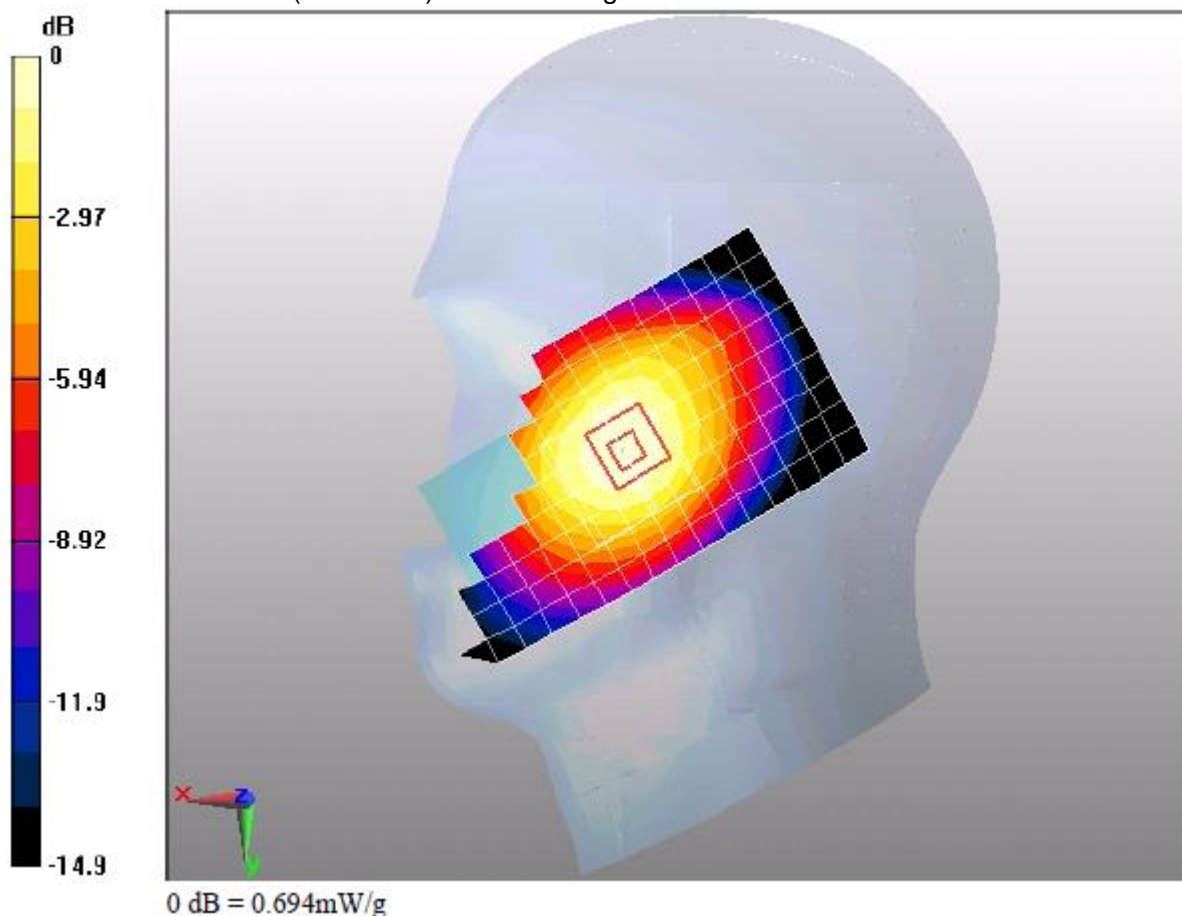
Configuration/Body/Zoom Scan (7x7x7)/Cube 0: Measurement grid: dx=5mm, dy=5mm, dz=5mm

Reference Value = 10.6 V/m; Power Drift = -0.196 dB

Peak SAR (extrapolated) = 0.846 W/kg

SAR(1 g) = 0.653 mW/g; SAR(10 g) = 0.477 mW/g[Info: Interpolated medium parameters used for SAR evaluation.](#)

Maximum value of SAR (measured) = 0.694 mW/g

**Additional information:**

position or distance of DUT to SAM (if not standard head positions) :

ambient temperature: 23.0°C; liquid temperature: 22.2°C

Test report no.: SYBH(Z-SAR)005022011-2

Date/Time: 2/21/2011 6:08:20 PM, Date/Time: 2/21/2011 6:32:48 PM

M580 CDMA 800 1013CH Right hand touch cheek-Open**DUT: M580; Type: Handset; Serial: E3J2A11110700279**

Communication System: HW -CDMA2000; Frequency: 824.7 MHz

Medium parameters used: $f = 825$ MHz; $\sigma = 0.876$ mho/m; $\epsilon_r = 41.5$; $\rho = 1000$ kg/m³

Phantom section: Right Section

Measurement Standard: DASY5 (IEEE/IEC/ANSI C63.19-2007)

DASY5 Configuration:

Probe: ES3DV3 - SN3168; ConvF(5.98, 5.98, 5.98); Calibrated: 12/23/2010

Sensor-Surface: 4mm (Mechanical Surface Detection)

Electronics: DAE4 Sn852; Calibrated: 12/24/2010

Phantom: SAM2; Type: SAM; Serial: TP-1474

Measurement SW: DASY5, V5.2 Build 157; SEMCAD X Version 14.0 Build 57

Configuration/Body/Area Scan (10x17x1): Measurement grid: dx=10mm, dy=10mm

Maximum value of SAR (measured) = 0.706 mW/g

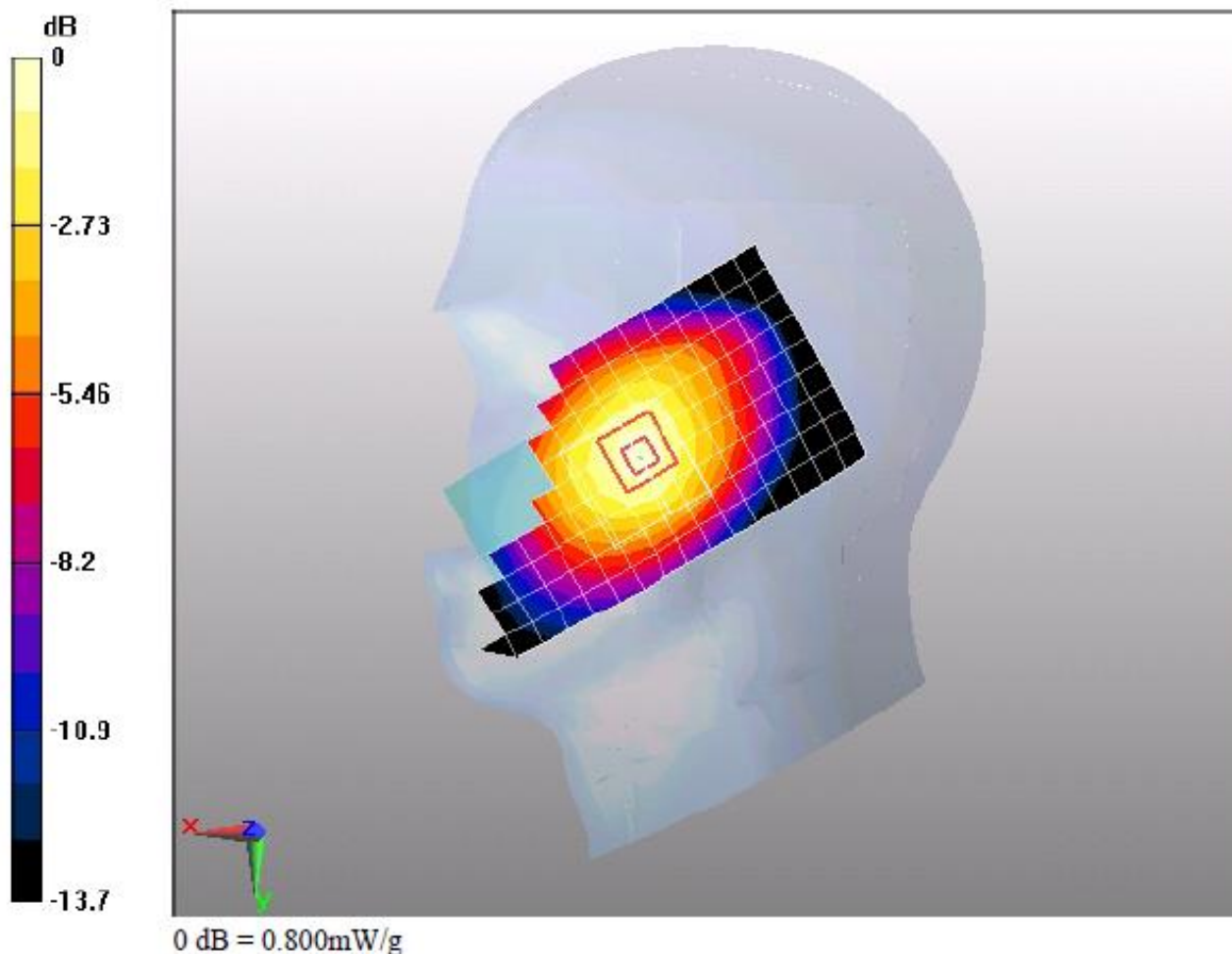
Configuration/Body/Zoom Scan (7x7x7)/Cube 0: Measurement grid: dx=5mm, dy=5mm, dz=5mm

Reference Value = 10.9 V/m; Power Drift = 0.013 dB

Peak SAR (extrapolated) = 0.984 W/kg

SAR(1 g) = 0.741 mW/g; SAR(10 g) = 0.535 mW/g

Maximum value of SAR (measured) = 0.800 mW/g

**Additional information:**

position or distance of DUT to SAM (if not standard head positions) :

ambient temperature: 23.0°C; liquid temperature: 22.2°C

Test report no.: SYBH(Z-SAR)005022011-2

Annex 2.2 CDMA800MHz Body

Date/Time: 2/19/2011 9:39:15 AM, Date/Time: 2/19/2011 9:47:41 AM

M580 CDMA 800 384CH Towards phantom 15mm-Open**DUT: M580; Type: Handset; Serial: E3J2A11110700279**

Communication System: HW -CDMA2000; Frequency: 836.52 MHz

Medium parameters used (interpolated): $f = 836.52$ MHz; $\sigma = 0.959$ mho/m; $\epsilon_r = 53.5$; $\rho = 1000$ kg/m³

Phantom section: Flat Section

Measurement Standard: DASY5 (IEEE/IEC/ANSI C63.19-2007)

DASY5 Configuration:

Probe: ES3DV3 - SN3168; ConvF(5.92, 5.92, 5.92); Calibrated: 12/23/2010

Sensor-Surface: 4mm (Mechanical Surface Detection)

Electronics: DAE4 Sn852; Calibrated: 12/24/2010

Phantom: SAM1; Type: SAM; Serial: TP-1475

Measurement SW: DASY5, V5.2 Build 157; SEMCAD X Version 14.0 Build 57

Configuration/Body/Area Scan (7x12x1): Measurement grid: dx=15mm, dy=15mm[Info: Interpolated medium parameters used for SAR evaluation.](#)

Maximum value of SAR (measured) = 0.870 mW/g

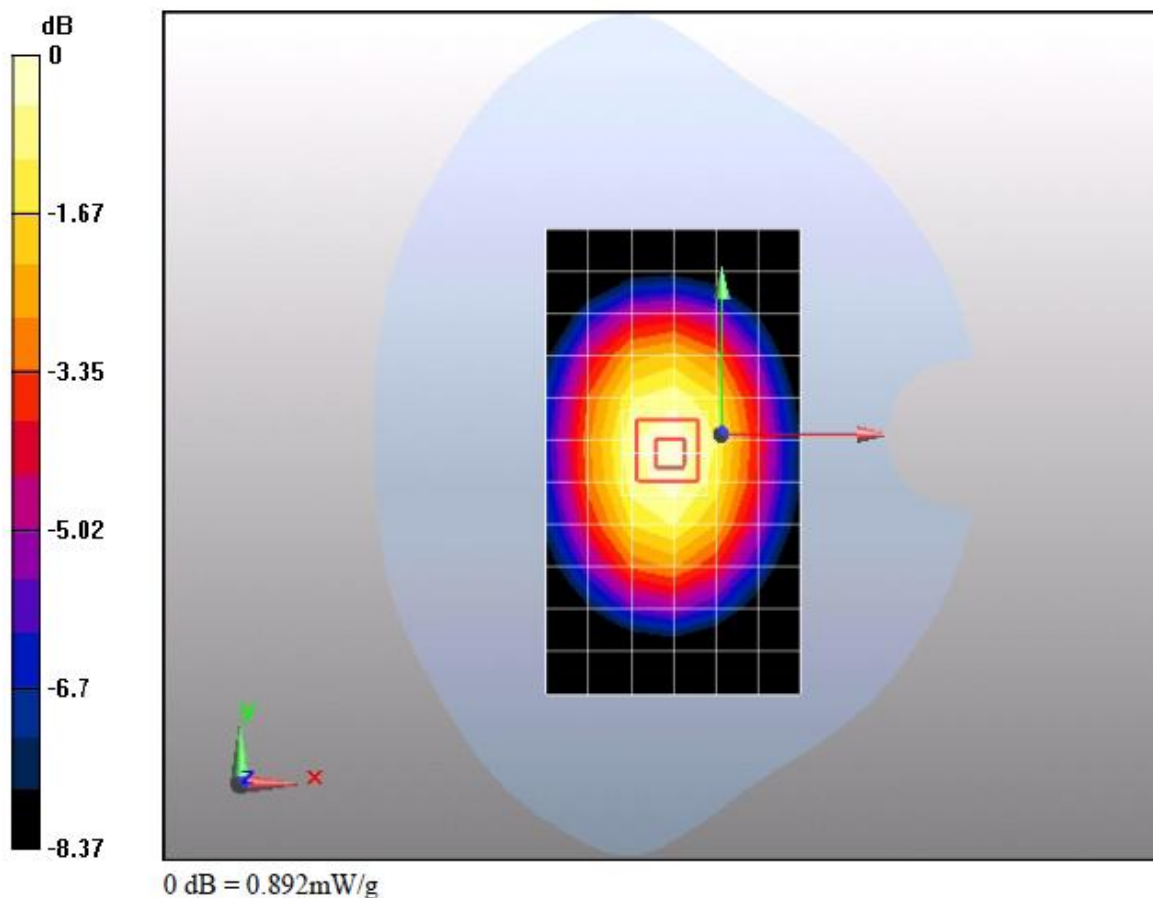
Configuration/Body/Zoom Scan (7x7x7)/Cube 0: Measurement grid: dx=5mm, dy=5mm, dz=5mm

Reference Value = 30.6 V/m; Power Drift = -0.032 dB

Peak SAR (extrapolated) = 1.07 W/kg

SAR(1 g) = 0.847 mW/g; SAR(10 g) = 0.627 mW/g[Info: Interpolated medium parameters used for SAR evaluation.](#)

Maximum value of SAR (measured) = 0.892 mW/g

**Additional information:**

position or distance of DUT to SAM (if not standard head positions) : 15 mm

ambient temperature: 23.0°C; liquid temperature: 22°C

Test report no.: SYBH(Z-SAR)005022011-2

Date/Time: 2/19/2011 9:12:18 AM, Date/Time: 2/19/2011 9:20:46 AM

M580 CDMA 800 384CH Towards phantom 15mm-Close**DUT: M580; Type: Handset; Serial: E3J2A11110700279**

Communication System: HW -CDMA2000; Frequency: 836.52 MHz

Medium parameters used (interpolated): $f = 836.52$ MHz; $\sigma = 0.959$ mho/m; $\epsilon_r = 53.5$; $\rho = 1000$ kg/m³

Phantom section: Flat Section

Measurement Standard: DASY5 (IEEE/IEC/ANSI C63.19-2007)

DASY5 Configuration:

Probe: ES3DV3 - SN3168; ConvF(5.92, 5.92, 5.92); Calibrated: 12/23/2010

Sensor-Surface: 4mm (Mechanical Surface Detection)

Electronics: DAE4 Sn852; Calibrated: 12/24/2010

Phantom: SAM1; Type: SAM; Serial: TP-1475

Measurement SW: DASY5, V5.2 Build 157; SEMCAD X Version 14.0 Build 57

Configuration/Body/Area Scan (7x12x1): Measurement grid: dx=15mm, dy=15mm[Info: Interpolated medium parameters used for SAR evaluation.](#)

Maximum value of SAR (measured) = 0.415 mW/g

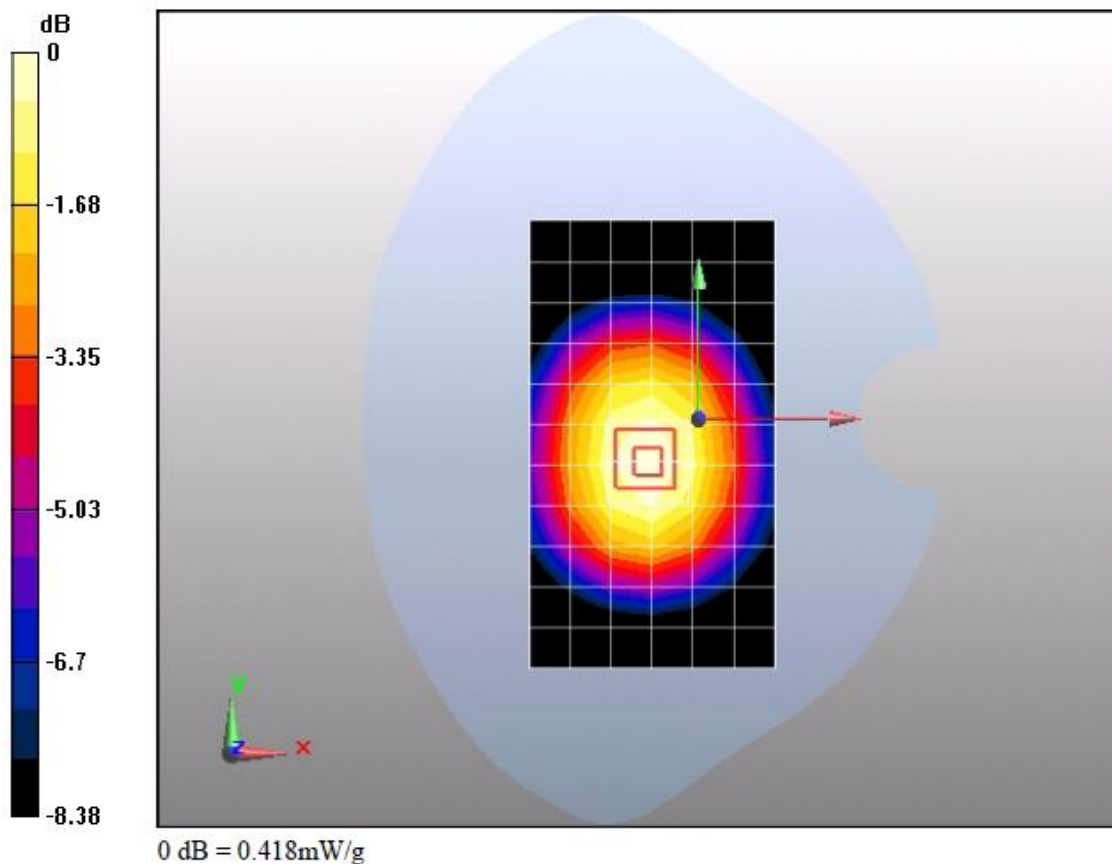
Configuration/Body/Zoom Scan (7x7x7)/Cube 0: Measurement grid: dx=5mm, dy=5mm, dz=5mm

Reference Value = 20.2 V/m; Power Drift = 0.012 dB

Peak SAR (extrapolated) = 0.504 W/kg

SAR(1 g) = 0.394 mW/g; SAR(10 g) = 0.294 mW/g[Info: Interpolated medium parameters used for SAR evaluation.](#)

Maximum value of SAR (measured) = 0.418 mW/g

**Additional information:**

position or distance of DUT to SAM (if not standard head positions) : 15 mm

ambient temperature: 23.0°C; liquid temperature: 22°C

Test report no.: SYBH(Z-SAR)005022011-2

Date/Time: 2/19/2011 11:07:39 AM, Date/Time: 2/19/2011 11:24:41 AM

M580 CDMA 800 384CH Towards ground 15mm-Open**DUT: M580; Type: Handset; Serial: E3J2A11110700279**

Communication System: HW -CDMA2000; Frequency: 836.52 MHz

Medium parameters used (interpolated): $f = 836.52$ MHz; $\sigma = 0.959$ mho/m; $\epsilon_r = 53.5$; $\rho = 1000$ kg/m³

Phantom section: Flat Section

Measurement Standard: DASY5 (IEEE/IEC/ANSI C63.19-2007)

DASY5 Configuration:

Probe: ES3DV3 - SN3168; ConvF(5.92, 5.92, 5.92); Calibrated: 12/23/2010

Sensor-Surface: 4mm (Mechanical Surface Detection)

Electronics: DAE4 Sn852; Calibrated: 12/24/2010

Phantom: SAM1; Type: SAM; Serial: TP-1475

Measurement SW: DASY5, V5.2 Build 157; SEMCAD X Version 14.0 Build 57

Configuration/Body/Area Scan (10x17x1): Measurement grid: dx=10mm, dy=10mm[Info: Interpolated medium parameters used for SAR evaluation.](#)

Maximum value of SAR (measured) = 1.14 mW/g

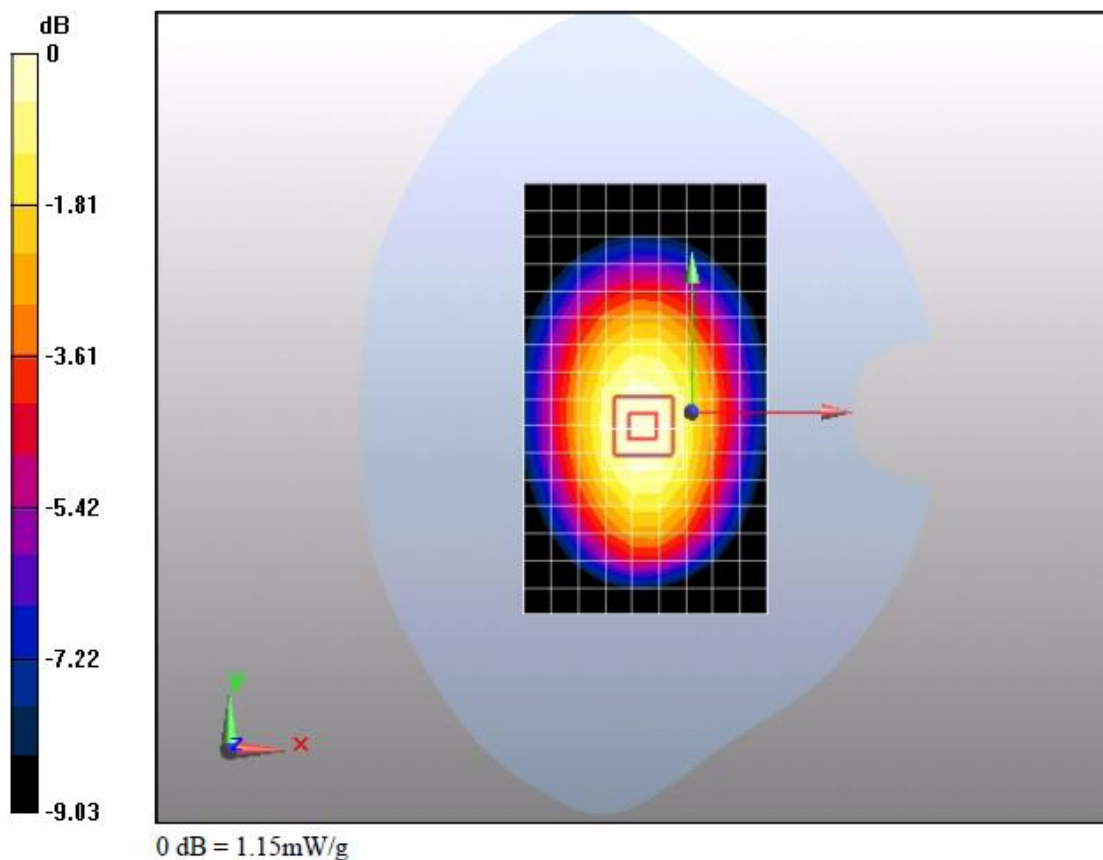
Configuration/Body/Zoom Scan (7x7x7)/Cube 0: Measurement grid: dx=5mm, dy=5mm, dz=5mm

Reference Value = 34.6 V/m; Power Drift = 0.147 dB

Peak SAR (extrapolated) = 1.4 W/kg

SAR(1 g) = 1.09 mW/g; SAR(10 g) = 0.795 mW/g[Info: Interpolated medium parameters used for SAR evaluation.](#)

Maximum value of SAR (measured) = 1.15 mW/g

**Additional information:**

position or distance of DUT to SAM (if not standard head positions) : 15 mm

ambient temperature: 23.0°C; liquid temperature: 22°C

Test report no.: SYBH(Z-SAR)005022011-2

Date/Time: 2/19/2011 10:33:06 AM, Date/Time: 2/19/2011 10:49:06 AM

M580 CDMA 800 384CH Towards ground 15mm-Close**DUT: M580; Type: Handset; Serial: E3J2A11110700279**

Communication System: HW -CDMA2000; Frequency: 836.52 MHz

Medium parameters used (interpolated): $f = 836.52$ MHz; $\sigma = 0.959$ mho/m; $\epsilon_r = 53.5$; $\rho = 1000$ kg/m³

Phantom section: Flat Section

Measurement Standard: DASY5 (IEEE/IEC/ANSI C63.19-2007)

DASY5 Configuration:

Probe: ES3DV3 - SN3168; ConvF(5.92, 5.92, 5.92); Calibrated: 12/23/2010

Sensor-Surface: 4mm (Mechanical Surface Detection)

Electronics: DAE4 Sn852; Calibrated: 12/24/2010

Phantom: SAM1; Type: SAM; Serial: TP-1475

Measurement SW: DASY5, V5.2 Build 157; SEMCAD X Version 14.0 Build 57

Configuration/Body/Area Scan (10x16x1): Measurement grid: dx=10mm, dy=10mm[Info: Interpolated medium parameters used for SAR evaluation.](#)

Maximum value of SAR (measured) = 1.01 mW/g

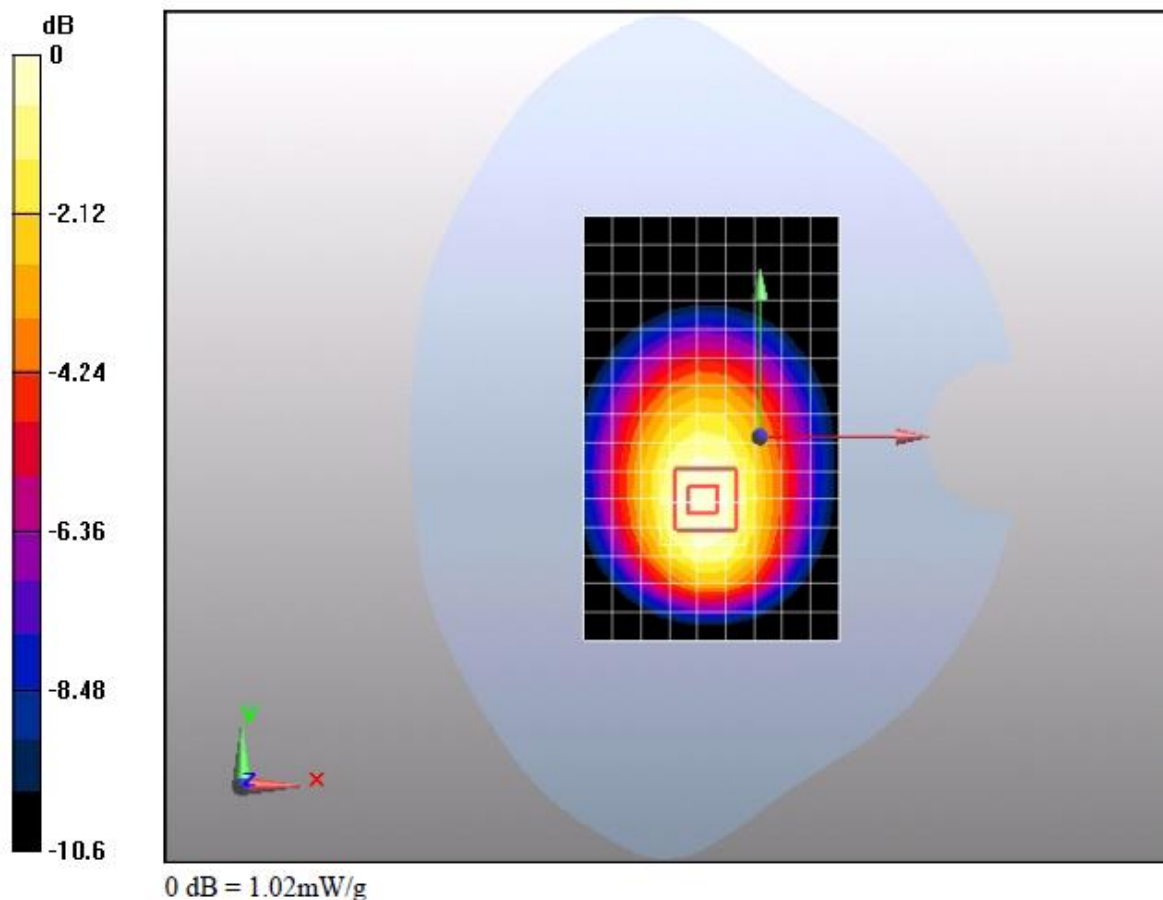
Configuration/Body/Zoom Scan (7x7x7)/Cube 0: Measurement grid: dx=5mm, dy=5mm, dz=5mm

Reference Value = 29.1 V/m; Power Drift = -0.030 dB

Peak SAR (extrapolated) = 1.28 W/kg

SAR(1 g) = 0.954 mW/g; SAR(10 g) = 0.676 mW/g[Info: Interpolated medium parameters used for SAR evaluation.](#)

Maximum value of SAR (measured) = 1.02 mW/g

**Additional information:**

position or distance of DUT to SAM (if not standard head positions) : 15 mm

ambient temperature: 23.0°C; liquid temperature: 22°C

Test report no.: SYBH(Z-SAR)005022011-2

Date/Time: 2/19/2011 2:31:35 PM, Date/Time: 2/19/2011 2:40:01 PM

M580 CDMA 800 777CH Towards phantom 15mm-Open**DUT: M580; Type: Handset; Serial: E3J2A11110700279**

Communication System: HW -CDMA2000; Frequency: 848.31 MHz

Medium parameters used (interpolated): $f = 848.31$ MHz; $\sigma = 0.971$ mho/m; $\epsilon_r = 53.4$; $\rho = 1000$ kg/m³

Phantom section: Flat Section

Measurement Standard: DASY5 (IEEE/IEC/ANSI C63.19-2007)

DASY5 Configuration:

Probe: ES3DV3 - SN3168; ConvF(5.92, 5.92, 5.92); Calibrated: 12/23/2010

Sensor-Surface: 4mm (Mechanical Surface Detection)

Electronics: DAE4 Sn852; Calibrated: 12/24/2010

Phantom: SAM1; Type: SAM; Serial: TP-1475

Measurement SW: DASY5, V5.2 Build 157; SEMCAD X Version 14.0 Build 57

Configuration/Body/Area Scan (7x12x1): Measurement grid: dx=15mm, dy=15mm[Info: Interpolated medium parameters used for SAR evaluation.](#)

Maximum value of SAR (measured) = 0.722 mW/g

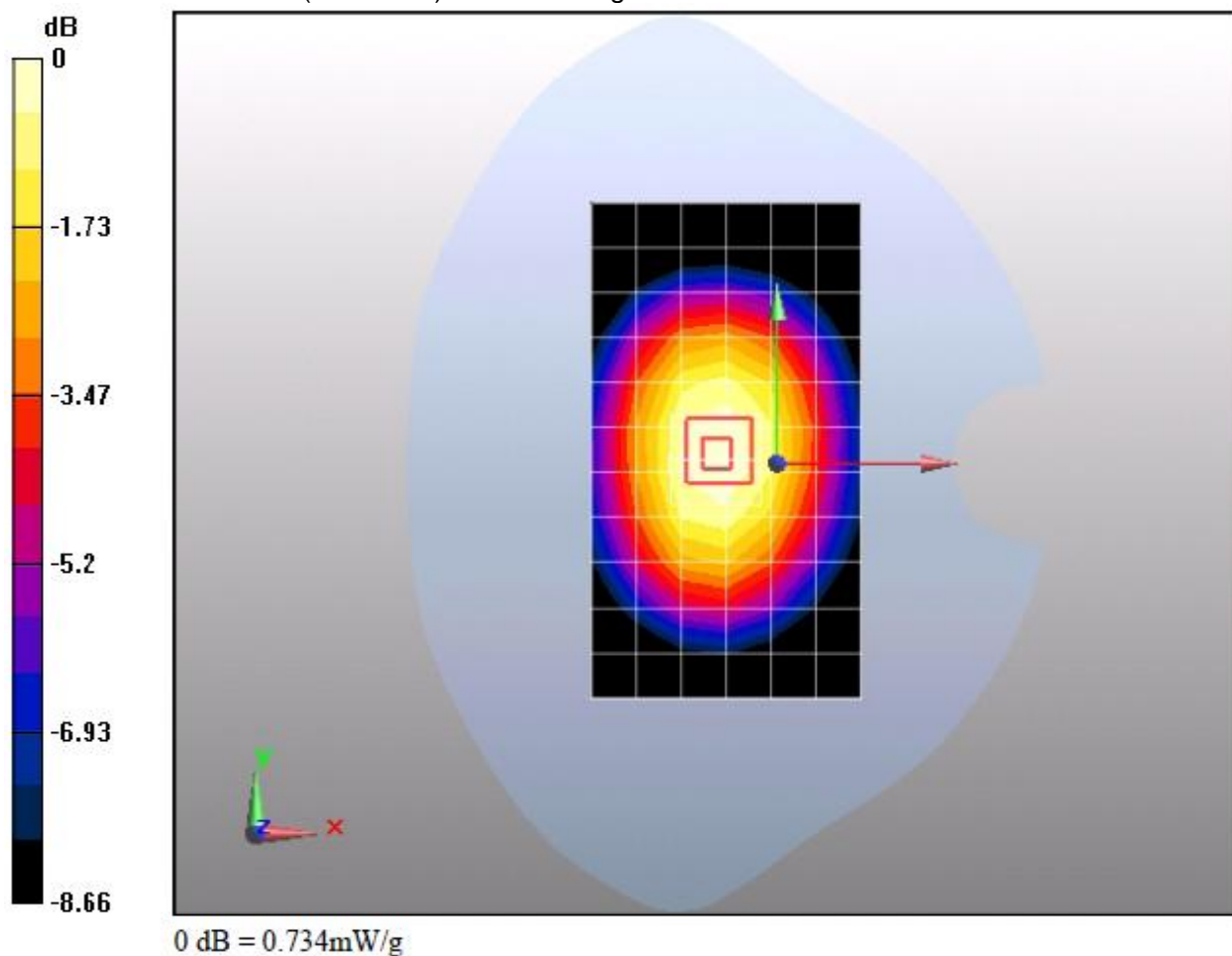
Configuration/Body/Zoom Scan (7x7x7)/Cube 0: Measurement grid: dx=5mm, dy=5mm, dz=5mm

Reference Value = 28.2 V/m; Power Drift = -0.181 dB

Peak SAR (extrapolated) = 0.878 W/kg

SAR(1 g) = 0.687 mW/g; SAR(10 g) = 0.509 mW/g[Info: Interpolated medium parameters used for SAR evaluation.](#)

Maximum value of SAR (measured) = 0.734 mW/g

**Additional information:**

position or distance of DUT to SAM (if not standard head positions) : 15 mm

ambient temperature: 23.0°C; liquid temperature: 22°C

Test report no.: SYBH(Z-SAR)005022011-2

Date/Time: 2/19/2011 2:55:38 PM, Date/Time: 2/19/2011 3:04:05 PM

M580 CDMA 800 1013CH Towards phantom 15mm-Open**DUT: M580; Type: Handset; Serial: E3J2A11110700279**

Communication System: HW -CDMA2000; Frequency: 824.7 MHz

Medium parameters used: $f = 825$ MHz; $\sigma = 0.947$ mho/m; $\epsilon_r = 53.6$; $\rho = 1000$ kg/m³

Phantom section: Flat Section

Measurement Standard: DASY5 (IEEE/IEC/ANSI C63.19-2007)

DASY5 Configuration:

Probe: ES3DV3 - SN3168; ConvF(5.92, 5.92, 5.92); Calibrated: 12/23/2010

Sensor-Surface: 4mm (Mechanical Surface Detection)

Electronics: DAE4 Sn852; Calibrated: 12/24/2010

Phantom: SAM1; Type: SAM; Serial: TP-1475

Measurement SW: DASY5, V5.2 Build 157; SEMCAD X Version 14.0 Build 57

Configuration/Body/Area Scan (7x12x1): Measurement grid: dx=15mm, dy=15mm

Maximum value of SAR (measured) = 0.775 mW/g

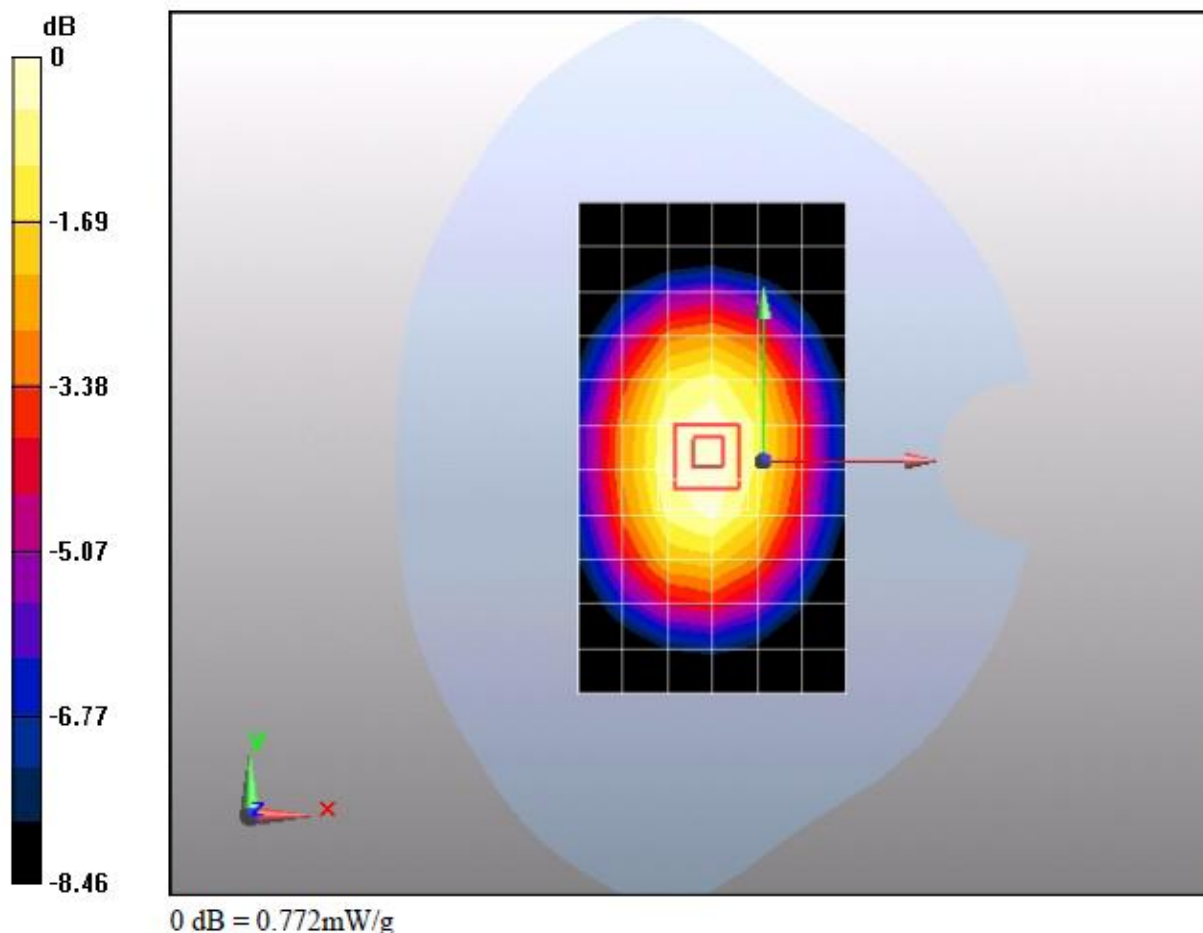
Configuration/Body/Zoom Scan (7x7x7)/Cube 0: Measurement grid: dx=5mm, dy=5mm, dz=5mm

Reference Value = 29.1 V/m; Power Drift = -0.033 dB

Peak SAR (extrapolated) = 0.963 W/kg

SAR(1 g) = 0.732 mW/g; SAR(10 g) = 0.551 mW/g

Maximum value of SAR (measured) = 0.772 mW/g

**Additional information:**

position or distance of DUT to SAM (if not standard head positions) : 15 mm

ambient temperature: 23.0°C; liquid temperature: 22.0°C

Test report no.: SYBH(Z-SAR)005022011-2

Date/Time: 2/19/2011 11:59:45 AM, Date/Time: 2/19/2011 12:16:46 PM

M580 CDMA 800 777CH Towards ground 15mm-Open**DUT: M580; Type: Handset; Serial: E3J2A11110700279**

Communication System: HW -CDMA2000; Frequency: 848.31 MHz

Medium parameters used (interpolated): $f = 848.31$ MHz; $\sigma = 0.971$ mho/m; $\epsilon_r = 53.4$; $\rho = 1000$ kg/m³

Phantom section: Flat Section

Measurement Standard: DASY5 (IEEE/IEC/ANSI C63.19-2007)

DASY5 Configuration:

Probe: ES3DV3 - SN3168; ConvF(5.92, 5.92, 5.92); Calibrated: 12/23/2010

Sensor-Surface: 4mm (Mechanical Surface Detection)

Electronics: DAE4 Sn852; Calibrated: 12/24/2010

Phantom: SAM1; Type: SAM; Serial: TP-1475

Measurement SW: DASY5, V5.2 Build 157; SEMCAD X Version 14.0 Build 57

Configuration/Body/Area Scan (10x17x1): Measurement grid: dx=10mm, dy=10mm[Info: Interpolated medium parameters used for SAR evaluation.](#)

Maximum value of SAR (measured) = 0.943 mW/g

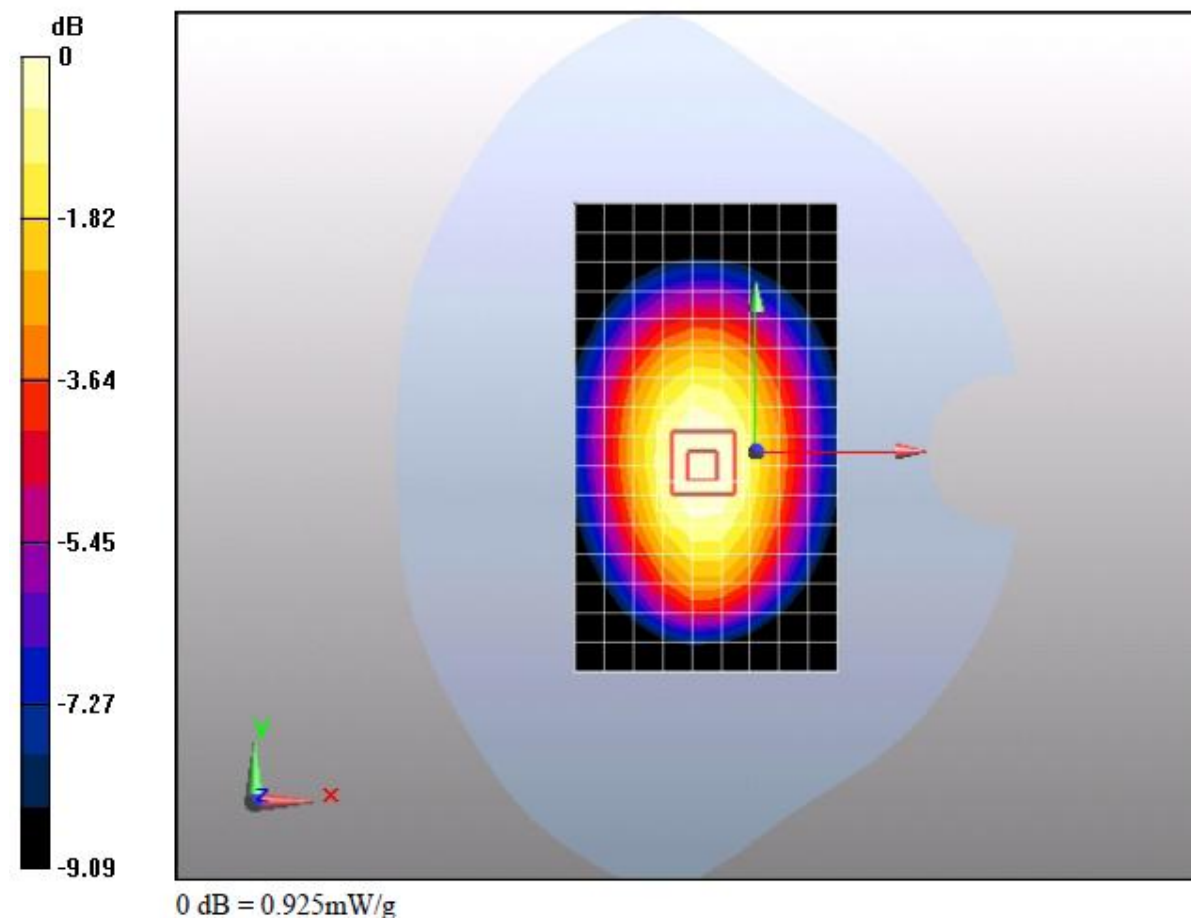
Configuration/Body/Zoom Scan (7x7x7)/Cube 0: Measurement grid: dx=5mm, dy=5mm, dz=5mm

Reference Value = 31.7 V/m; Power Drift = -0.121 dB

Peak SAR (extrapolated) = 1.12 W/kg

SAR(1 g) = 0.875 mW/g; SAR(10 g) = 0.639 mW/g[Info: Interpolated medium parameters used for SAR evaluation.](#)

Maximum value of SAR (measured) = 0.925 mW/g

**Additional information:**

position or distance of DUT to SAM (if not standard head positions) : 15 mm

ambient temperature: 23.0°C; liquid temperature: 22°C

Test report no.: SYBH(Z-SAR)005022011-2

Date/Time: 2/19/2011 12:38:00 PM, Date/Time: 2/19/2011 12:55:01 PM

M580 CDMA 800 1013CH Towards ground 15mm-Open**DUT: M580; Type: Handset; Serial: E3J2A11110700279**

Communication System: HW -CDMA2000; Frequency: 824.7 MHz

Medium parameters used: $f = 825$ MHz; $\sigma = 0.947$ mho/m; $\epsilon_r = 53.6$; $\rho = 1000$ kg/m³

Phantom section: Flat Section

Measurement Standard: DASY5 (IEEE/IEC/ANSI C63.19-2007)

DASY5 Configuration:

Probe: ES3DV3 - SN3168; ConvF(5.92, 5.92, 5.92); Calibrated: 12/23/2010

Sensor-Surface: 4mm (Mechanical Surface Detection)

Electronics: DAE4 Sn852; Calibrated: 12/24/2010

Phantom: SAM1; Type: SAM; Serial: TP-1475

Measurement SW: DASY5, V5.2 Build 157; SEMCAD X Version 14.0 Build 57

Configuration/Body/Area Scan (10x17x1): Measurement grid: dx=10mm, dy=10mm

Maximum value of SAR (measured) = 1.03 mW/g

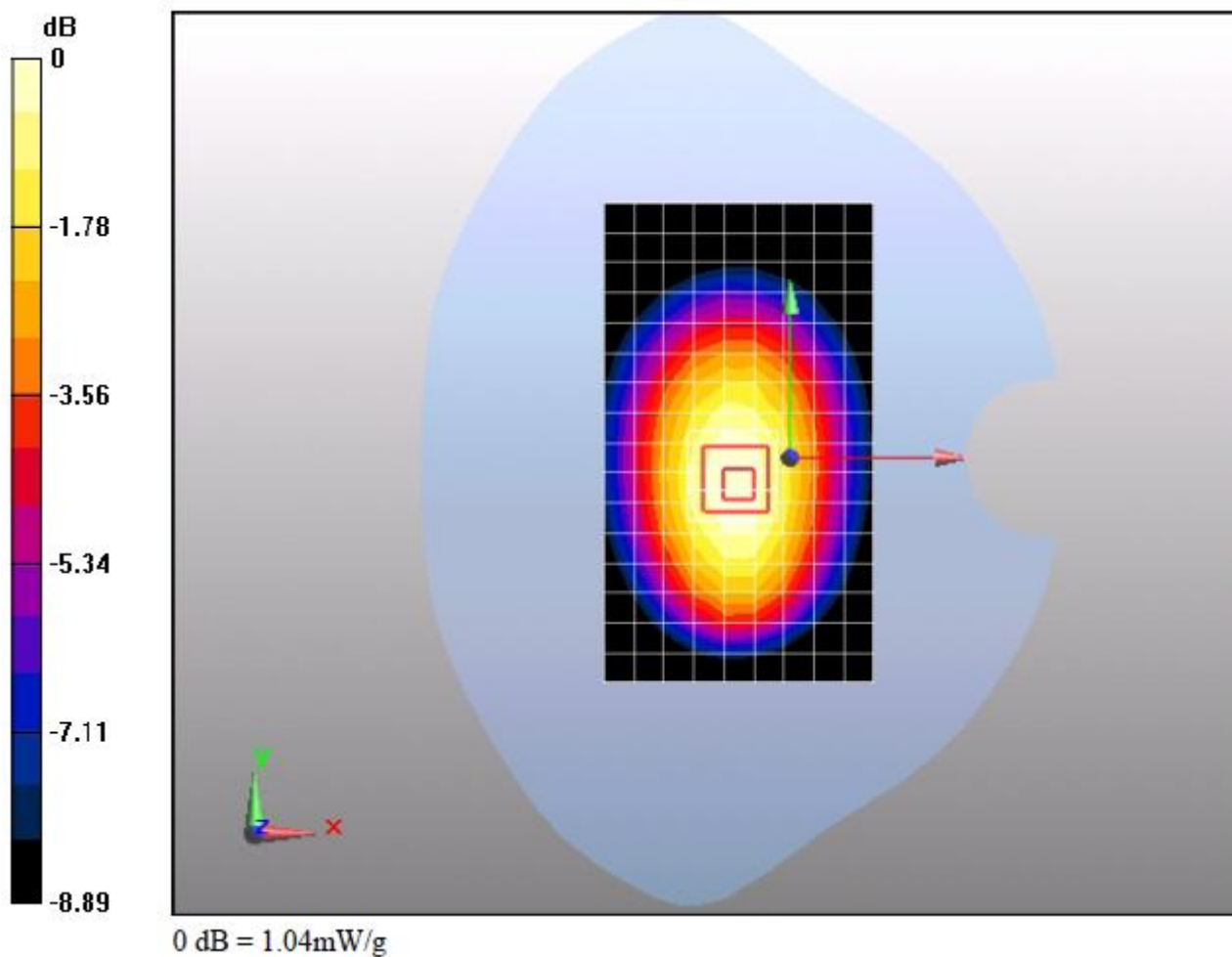
Configuration/Body/Zoom Scan (7x7x7)/Cube 0: Measurement grid: dx=5mm, dy=5mm, dz=5mm

Reference Value = 33.5 V/m; Power Drift = -0.064 dB

Peak SAR (extrapolated) = 1.25 W/kg

SAR(1 g) = 0.976 mW/g; SAR(10 g) = 0.713 mW/g

Maximum value of SAR (measured) = 1.04 mW/g

**Additional information:**

position or distance of DUT to SAM (if not standard head positions) : 15 mm

ambient temperature: 23.0°C; liquid temperature: 22°C

Test report no.: SYBH(Z-SAR)005022011-2

Date/Time: 2/19/2011 3:49:55 PM, Date/Time: 2/19/2011 4:07:04 PM

M580 CDMA 800 777CH Towards ground 15mm-Close-1**DUT: M580; Type: Handset; Serial: E3J2A11110700279**

Communication System: HW -CDMA2000; Frequency: 848.31 MHz

Medium parameters used (interpolated): $f = 848.31$ MHz; $\sigma = 0.971$ mho/m; $\epsilon_r = 53.4$; $\rho = 1000$ kg/m³

Phantom section: Flat Section

Measurement Standard: DASY5 (IEEE/IEC/ANSI C63.19-2007)

DASY5 Configuration:

Probe: ES3DV3 - SN3168; ConvF(5.92, 5.92, 5.92); Calibrated: 12/23/2010

Sensor-Surface: 4mm (Mechanical Surface Detection)

Electronics: DAE4 Sn852; Calibrated: 12/24/2010

Phantom: SAM1; Type: SAM; Serial: TP-1475

Measurement SW: DASY5, V5.2 Build 157; SEMCAD X Version 14.0 Build 57

Configuration/Body/Area Scan (10x17x1): Measurement grid: dx=10mm, dy=10mm[Info: Interpolated medium parameters used for SAR evaluation.](#)

Maximum value of SAR (measured) = 0.668 mW/g

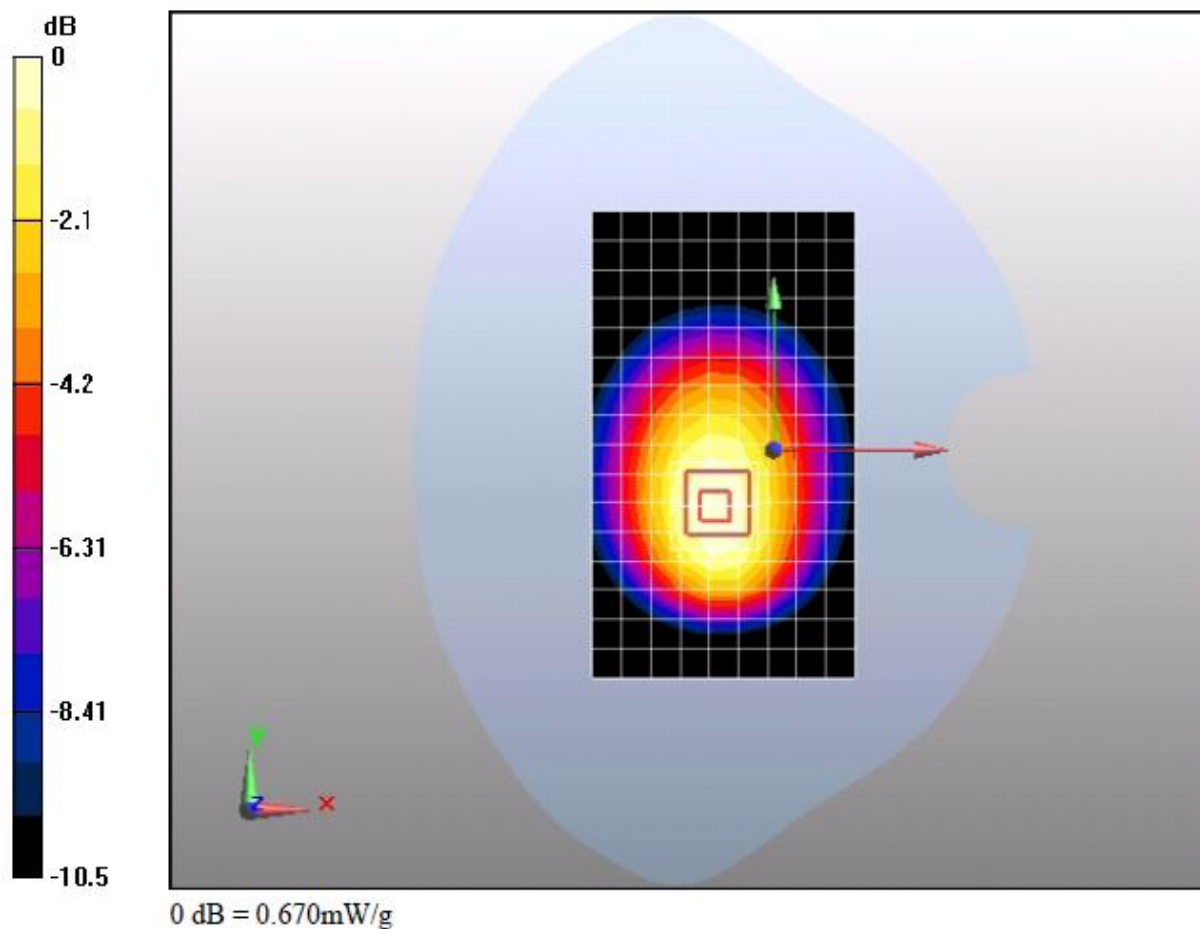
Configuration/Body/Zoom Scan (7x7x7)/Cube 0: Measurement grid: dx=5mm, dy=5mm, dz=5mm

Reference Value = 24.3 V/m; Power Drift = -0.00822 dB

Peak SAR (extrapolated) = 0.844 W/kg

SAR(1 g) = 0.629 mW/g; SAR(10 g) = 0.446 mW/g[Info: Interpolated medium parameters used for SAR evaluation.](#)

Maximum value of SAR (measured) = 0.670 mW/g

**Additional information:**

position or distance of DUT to SAM (if not standard head positions) : 15 mm

ambient temperature: 23.0°C; liquid temperature: 22°C

Test report no.: SYBH(Z-SAR)005022011-2

Date/Time: 2/19/2011 4:22:25 PM, Date/Time: 2/19/2011 4:39:33 PM

M580 CDMA 800 1013CH Towards ground 15mm-Close**DUT: M580; Type: Handset; Serial: E3J2A11110700279**

Communication System: HW -CDMA2000; Frequency: 824.7 MHz

Medium parameters used: $f = 825$ MHz; $\sigma = 0.947$ mho/m; $\epsilon_r = 53.6$; $\rho = 1000$ kg/m³

Phantom section: Flat Section

Measurement Standard: DASY5 (IEEE/IEC/ANSI C63.19-2007)

DASY5 Configuration:

Probe: ES3DV3 - SN3168; ConvF(5.92, 5.92, 5.92); Calibrated: 12/23/2010

Sensor-Surface: 4mm (Mechanical Surface Detection)

Electronics: DAE4 Sn852; Calibrated: 12/24/2010

Phantom: SAM1; Type: SAM; Serial: TP-1475

Measurement SW: DASY5, V5.2 Build 157; SEMCAD X Version 14.0 Build 57

Configuration/Body/Area Scan (10x17x1): Measurement grid: dx=10mm, dy=10mm

Maximum value of SAR (measured) = 0.674 mW/g

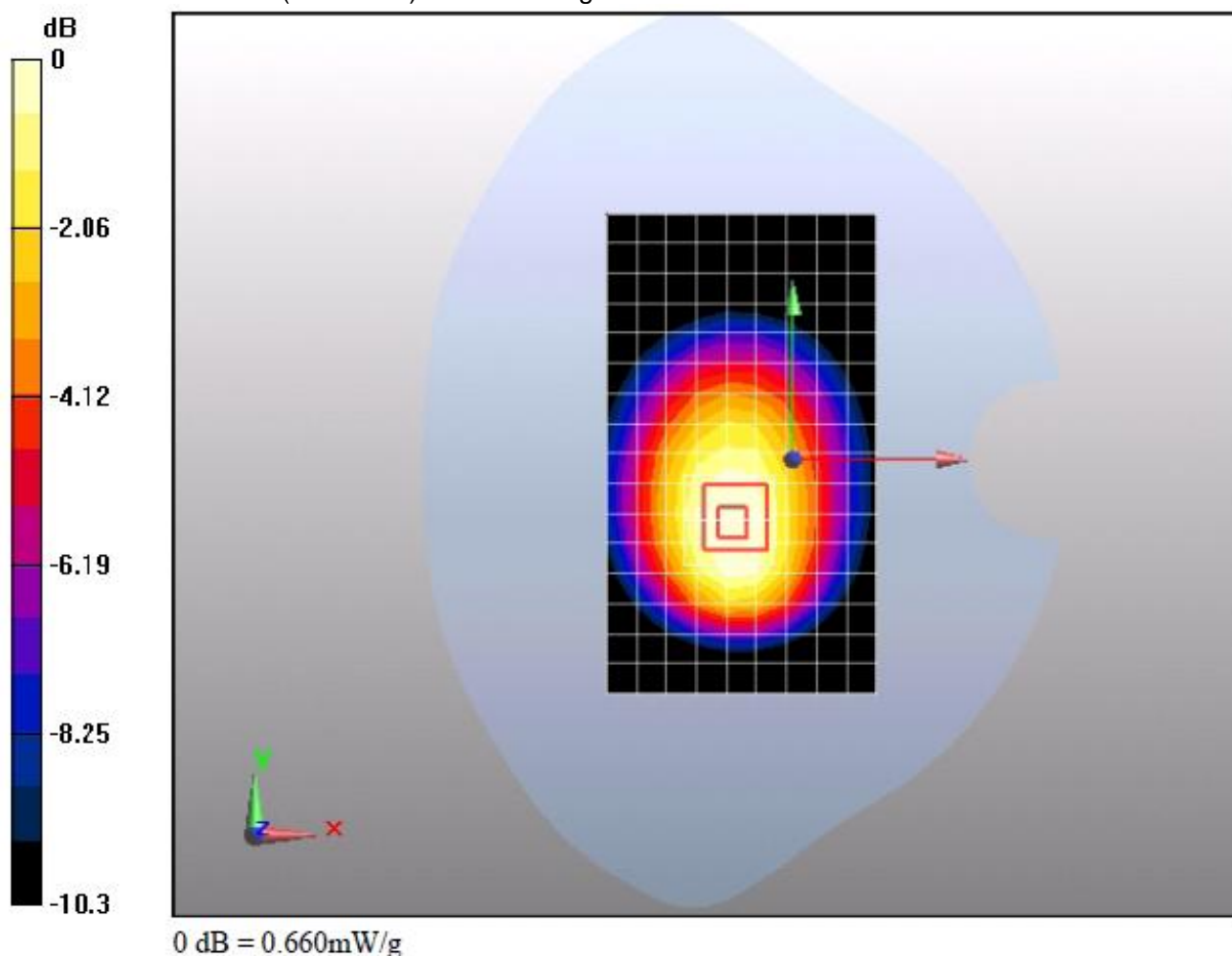
Configuration/Body/Zoom Scan (7x7x7)/Cube 0: Measurement grid: dx=5mm, dy=5mm, dz=5mm

Reference Value = 24.8 V/m; Power Drift = -0.169 dB

Peak SAR (extrapolated) = 0.823 W/kg

SAR(1 g) = 0.622 mW/g; SAR(10 g) = 0.443 mW/g

Maximum value of SAR (measured) = 0.660 mW/g

**Additional information:**

position or distance of DUT to SAM (if not standard head positions) : 15 mm

ambient temperature: 23.0°C; liquid temperature: 22°C

Test report no.: SYBH(Z-SAR)005022011-2

Date/Time: 2/19/2011 5:28:00 PM, Date/Time: 2/19/2011 5:45:08 PM

M580 CDMA 800 384CH Towards ground 15mm-Open with Headset**DUT: M580; Type: Handset; Serial: E3J2A11110700279**

Communication System: HW -CDMA2000; Frequency: 836.52 MHz

Medium parameters used (interpolated): $f = 836.52$ MHz; $\sigma = 0.959$ mho/m; $\epsilon_r = 53.5$; $\rho = 1000$ kg/m³

Phantom section: Flat Section

Measurement Standard: DASY5 (IEEE/IEC/ANSI C63.19-2007)

DASY5 Configuration:

Probe: ES3DV3 - SN3168; ConvF(5.92, 5.92, 5.92); Calibrated: 12/23/2010

Sensor-Surface: 4mm (Mechanical Surface Detection)

Electronics: DAE4 Sn852; Calibrated: 12/24/2010

Phantom: SAM1; Type: SAM; Serial: TP-1475

Measurement SW: DASY5, V5.2 Build 157; SEMCAD X Version 14.0 Build 57

Configuration/Body/Area Scan (10x17x1): Measurement grid: dx=10mm, dy=10mm[Info: Interpolated medium parameters used for SAR evaluation.](#)

Maximum value of SAR (measured) = 0.826 mW/g

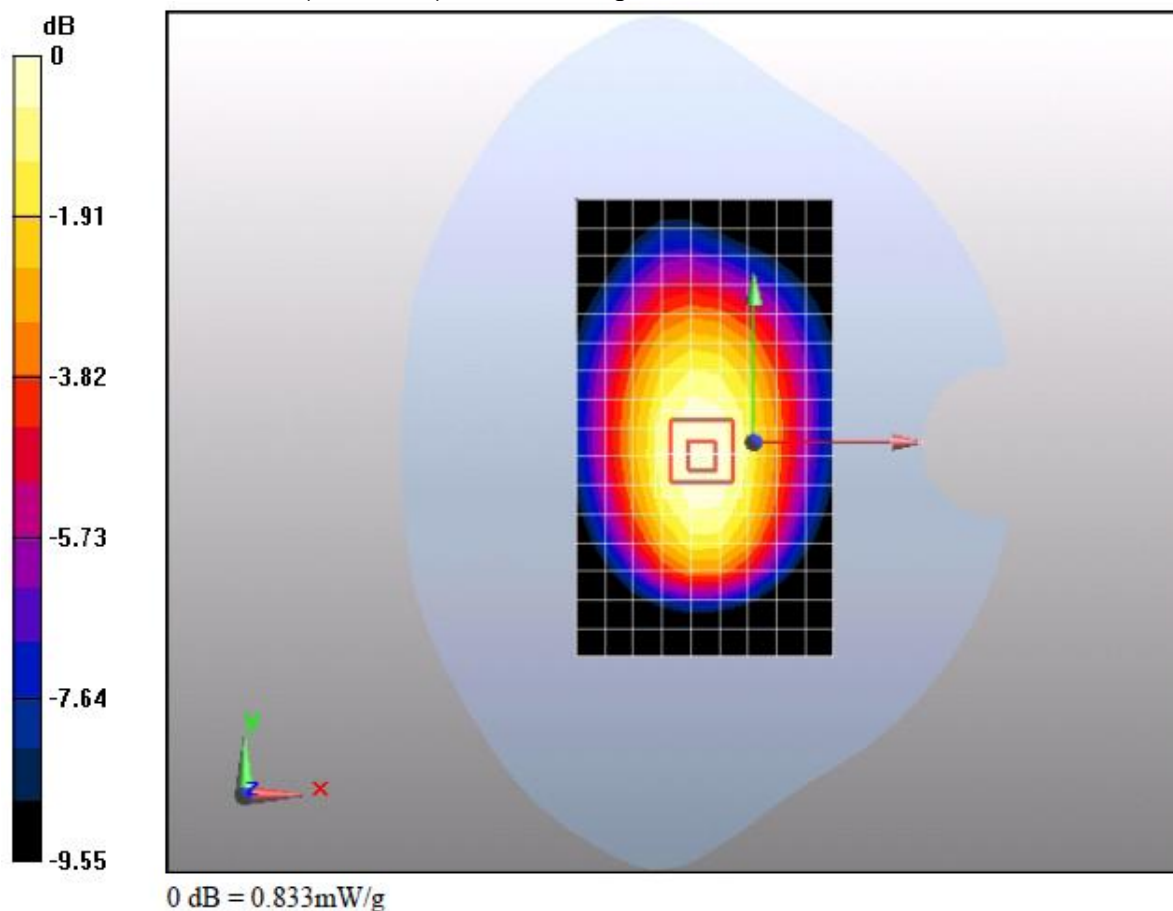
Configuration/Body/Zoom Scan (7x7x7)/Cube 0: Measurement grid: dx=5mm, dy=5mm, dz=5mm

Reference Value = 30.1 V/m; Power Drift = -0.111 dB

Peak SAR (extrapolated) = 1.02 W/kg

SAR(1 g) = 0.781 mW/g; SAR(10 g) = 0.564 mW/g[Info: Interpolated medium parameters used for SAR evaluation.](#)

Maximum value of SAR (measured) = 0.833 mW/g

**Additional information:**

position or distance of DUT to SAM (if not standard head positions) : 15 mm

ambient temperature: 23.0°C; liquid temperature: 22°C