



Appendix B DASy Measurement Results

Table of contents
GSM850 Head Second Antenna
GSM850 Body Second Antenna
GSM1900 Head Second Antenna
GSM1900 Body Second Antenna
UMTS Band 2 Head Second Antenna
UMTS Band 2 Body Second Antenna
UMTS Band 5 Head Second Antenna
UMTS Band 5 Body Second Antenna
LTE Band 5 Head Second Antenna
LTE Band 5 Body Second Antenna
LTE Band 7 Head Second Antenna
LTE Band 7 Body Second Antenna
LTE Band 26 Head Second Antenna
LTE Band 26 Body Second Antenna
LTE Band 41 Head Second Antenna
LTE Band 41 Body Second Antenna
GSM850 Head Main Antenna
GSM850 Body Main Antenna
GSM1900 Head Main Antenna
GSM1900 Body Main Antenna
UMTS Band 2 Head Main Antenna
UMTS Band 2 Body Main Antenna
UMTS Band 5 Head Main Antenna
UMTS Band 5 Body Main Antenna
LTE Band 5 Head Main Antenna
LTE Band 5 Body Main Antenna
LTE Band 7 Head Main Antenna
LTE Band 7 Body Main Antenna
LTE Band 26 Head Main Antenna
LTE Band 26 Body Main Antenna
LTE Band 41 Head Main Antenna
LTE Band 41 Body Main Antenna
WiFi 2.4G Head
WiFi 2.4G Body

WiFi 5G Head
WiFi 5G Body
BT Head

Test Laboratory: HUAWEI SAR/HAC Lab

ANE-LX2J GSM850 190CH Right Touch-Second Antenna

DUT: ANE-LX2J; Type: Smart Phone; Serial: SAR5

Communication System: UID 0, HW-GSM\GPRS\EGPRS-1TS (0); Frequency: 836.6 MHz; Duty Cycle: 1:8.30042

Medium parameters used: $f = 837$ MHz; $\sigma = 0.92$ S/m; $\epsilon_r = 41.022$; $\rho = 1000$ kg/m³

Phantom section: Right Section

DASY Configuration:

- Probe: EX3DV4 - SN7489; ConvF(10.39, 10.39, 10.39); Calibrated: 2018-1-9;
- Sensor-Surface: 1.4mm (Mechanical Surface Detection), $z = 1.0, 31.0$
- Electronics: DAE4 Sn1531; Calibrated: 2018-1-3
- Phantom: SAM8; Type: QD 000 P41 AA; Serial: TP-1940
- DASY52 52.8.8(1222); SEMCAD X 14.6.10(7373)

Configuration/Head/Area Scan (9x14x1): Measurement grid: $dx=15$ mm, $dy=15$ mm

Maximum value of SAR (measured) = 0.540 W/kg

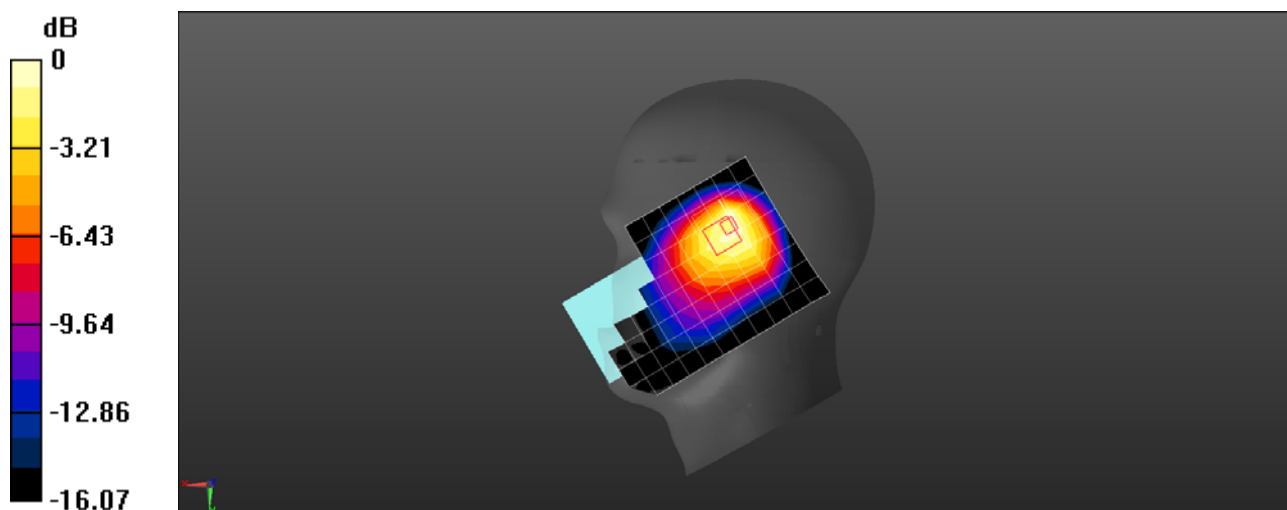
Configuration/Head/Zoom Scan (6x6x7)/Cube 0: Measurement grid: $dx=8$ mm, $dy=8$ mm, $dz=5$ mm

Reference Value = 18.04 V/m; Power Drift = 0.00 dB

Peak SAR (extrapolated) = 0.766 W/kg

SAR(1 g) = 0.431 W/kg; SAR(10 g) = 0.280 W/kg

Maximum value of SAR (measured) = 0.619 W/kg



0 dB = 0.619 W/kg = -2.08 dBW/kg

Test Laboratory: HUAWEI SAR/HAC Lab

ANE-LX2J GSM850 190CH Back Side 15mm with Battery3-Second Antenna

DUT: ANE-LX2J; Type: Smart Phone; Serial: SAR5

Communication System: UID 0, HW-GSM\GPRS\EGPRS-1TS (0); Frequency: 836.6 MHz; Duty Cycle: 1:8.30042

Medium parameters used: $f = 837$ MHz; $\sigma = 0.973$ S/m; $\epsilon_r = 55.107$; $\rho = 1000$ kg/m³

Phantom section: Flat Section

DASY Configuration:

- Probe: EX3DV4 - SN7489; ConvF(10.8, 10.8, 10.8); Calibrated: 2018-1-9;
- Sensor-Surface: 1.4mm (Mechanical Surface Detection), $z = 1.0, 31.0$
- Electronics: DAE4 Sn1531; Calibrated: 2018-1-3
- Phantom: SAM8; Type: QD 000 P41 AA; Serial: TP-1940
- DASY52 52.8.8(1222); SEMCAD X 14.6.10(7373)

Configuration/Head/Area Scan (9x14x1): Measurement grid: $dx=15$ mm, $dy=15$ mm

Maximum value of SAR (measured) = 0.140 W/kg

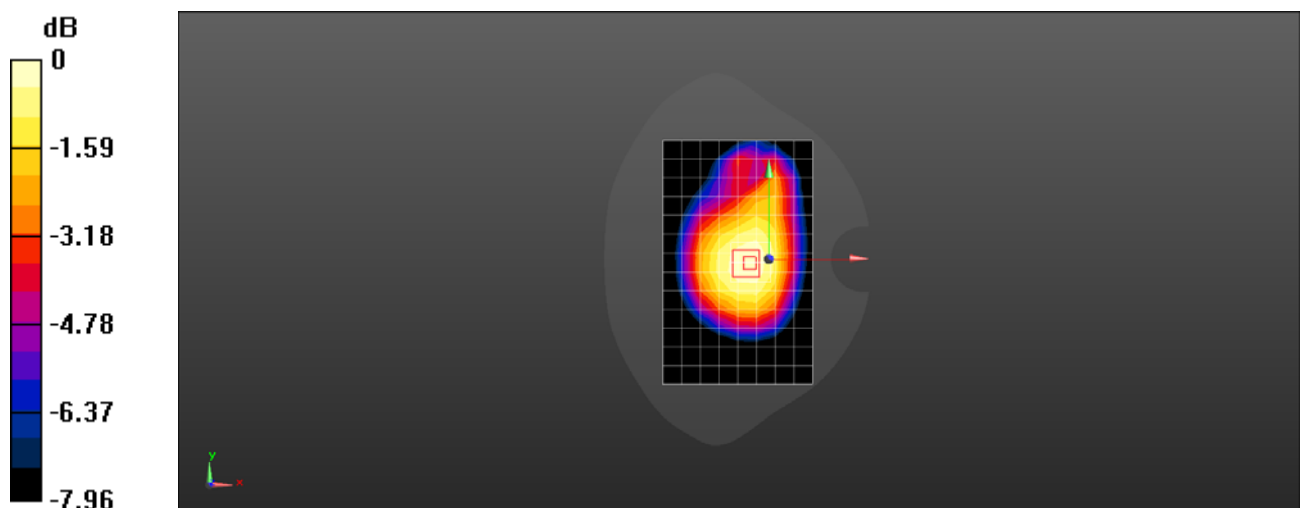
Configuration/Head/Zoom Scan (5x5x7)/Cube 0: Measurement grid: $dx=8$ mm, $dy=8$ mm, $dz=5$ mm

Reference Value = 11.02 V/m; Power Drift = 0.02 dB

Peak SAR (extrapolated) = 0.156 W/kg

SAR(1 g) = 0.119 W/kg; SAR(10 g) = 0.092 W/kg

Maximum value of SAR (measured) = 0.144 W/kg



0 dB = 0.144 W/kg = -8.42 dBW/kg

Test Laboratory: HUAWEI SAR/HAC Lab

ANE-LX2J GSM850 GPRS 2TS 190CH Left Side 10mm-Second Antenna

DUT: ANE-LX2J; Type: Smart Phone; Serial: SAR1

Communication System: UID 0, HW-GSM\GPRS\EGPRS-2TS (0); Frequency: 836.6 MHz; Duty Cycle: 1:4.10015

Medium parameters used: $f = 837 \text{ MHz}$; $\sigma = 0.983 \text{ S/m}$; $\epsilon_r = 54.313$; $\rho = 1000 \text{ kg/m}^3$

Phantom section: Flat Section

DASY Configuration:

- ε Probe: EX3DV4 - SN3736; ConvF(9.36, 9.36, 9.36); Calibrated: 2017-4-27;
- ε Sensor-Surface: 1.4mm (Mechanical Surface Detection), $z = 1.0, 31.0$
- ε Electronics: DAE4 Sn1236; Calibrated: 2017-7-21
- ε Phantom: SAM2; Type: SAM; Serial: TP:1474
- ε DASY52 52.8.8(1222); SEMCAD X 14.6.10(7331)

Configuration/Body/Area Scan (6x13x1): Measurement grid: $dx=15\text{mm}$, $dy=15\text{mm}$

Maximum value of SAR (measured) = 0.233 W/kg

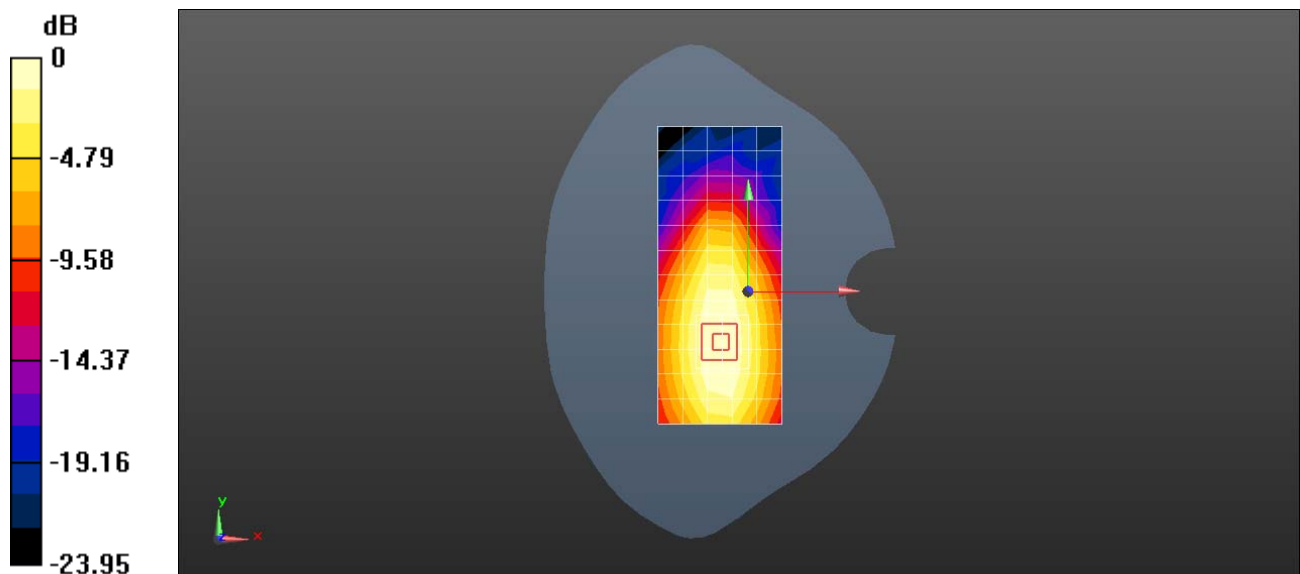
Configuration/Body/Zoom Scan (5x5x7)/Cube 0: Measurement grid: $dx=8\text{mm}$, $dy=8\text{mm}$, $dz=5\text{mm}$

Reference Value = 14.97 V/m; Power Drift = -0.06 dB

Peak SAR (extrapolated) = 0.298 W/kg

SAR(1 g) = 0.199 W/kg; SAR(10 g) = 0.133 W/kg

Maximum value of SAR (measured) = 0.263 W/kg



0 dB = 0.233 W/kg = -6.33 dBW/kg

Test Laboratory: HUAWEI SAR/HAC Lab

ANE-LX2J GSM1900 661CH Right Tilt with Battery2-Second Antenna

DUT: ANE-LX2J; Type: Smart Phone; Serial: SAR2

Communication System: UID 0, HW-GSM\GPRS\EGPRS-1TS (0); Frequency: 1880 MHz; Duty Cycle: 1:8.30042

Medium parameters used: $f = 1880$ MHz; $\sigma = 1.4$ S/m; $\epsilon_r = 38.889$; $\rho = 1000$ kg/m³

Phantom section: Right Section

DASY Configuration:

- ε Probe: EX3DV4 - SN3744; ConvF(8, 8, 8); Calibrated: 2017-7-24;
- ε Sensor-Surface: 1.4mm (Mechanical Surface Detection), $z = 1.0, 31.0$
- ε Electronics: DAE4 Sn852; Calibrated: 2017-4-27
- ε Phantom: SAM3; Type: SAM; Serial: TP-1597
- ε DASY52 52.8.8(1222); SEMCAD X 14.6.10(7331)

Configuration/Head/Area Scan (9x13x1): Measurement grid: $dx=15$ mm, $dy=15$ mm

Maximum value of SAR (measured) = 0.507 W/kg

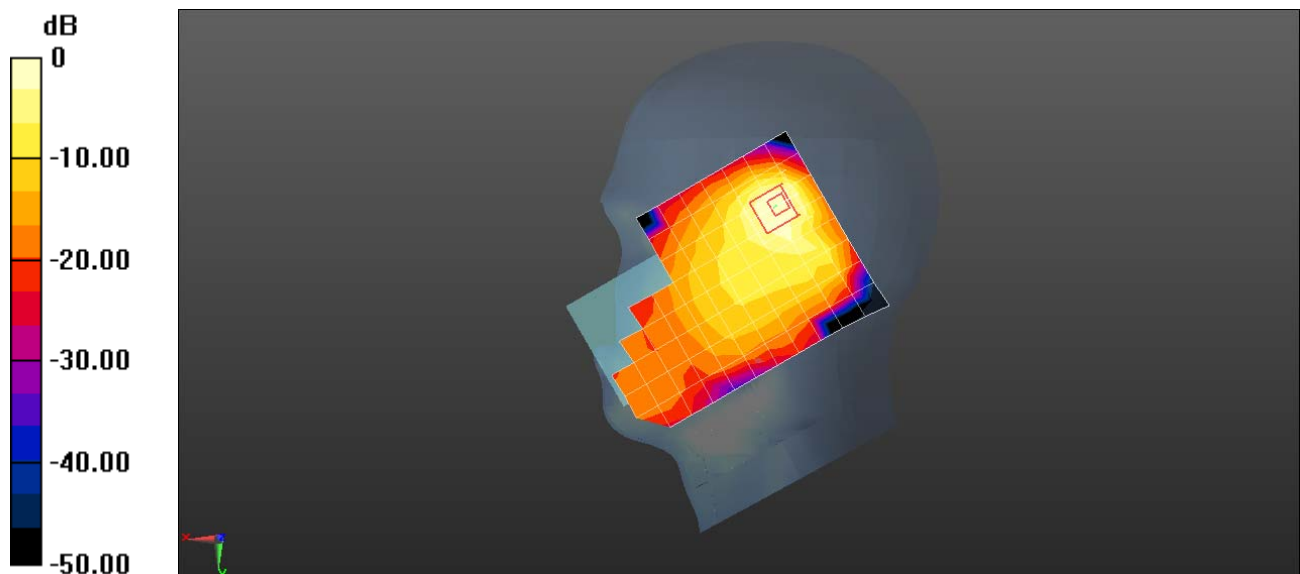
Configuration/Head/Zoom Scan (5x5x7)/Cube 0: Measurement grid: $dx=8$ mm, $dy=8$ mm, $dz=5$ mm

Reference Value = 11.60 V/m; Power Drift = 0.09 dB

Peak SAR (extrapolated) = 1.03 W/kg

SAR(1 g) = 0.443 W/kg; SAR(10 g) = 0.200 W/kg

Maximum value of SAR (measured) = 0.709 W/kg



0 dB = 0.507 W/kg = -2.95 dBW/kg

Test Laboratory: HUAWEI SAR/HAC Lab

ANE-LX2J GSM1900 661CH Back Side 15mm-Second Antenna

DUT: ANE-LX2J; Type: Smart Phone; Serial: SAR2

Communication System: UID 0, HW-GSM\GPRS\EGPRS-1TS (0); Frequency: 1880 MHz; Duty Cycle: 1:8.30042

Medium parameters used: $f = 1880$ MHz; $\sigma = 1.517$ S/m; $\epsilon_r = 51.776$; $\rho = 1000$ kg/m³

Phantom section: Flat Section

DASY Configuration:

- ε Probe: EX3DV4 - SN3744; ConvF(7.7, 7.7, 7.7); Calibrated: 2017-7-24;
- ε Sensor-Surface: 1.4mm (Mechanical Surface Detection), z = 1.0, 31.0
- ε Electronics: DAE4 Sn852; Calibrated: 2017-4-27
- ε Phantom: SAM4; Type: SAM; Serial: TP-1620
- ε DASY52 52.8.8(1222); SEMCAD X 14.6.10(7331)

Configuration/Body/Area Scan (9x14x1): Measurement grid: dx=15mm, dy=15mm

Maximum value of SAR (measured) = 0.0779 W/kg

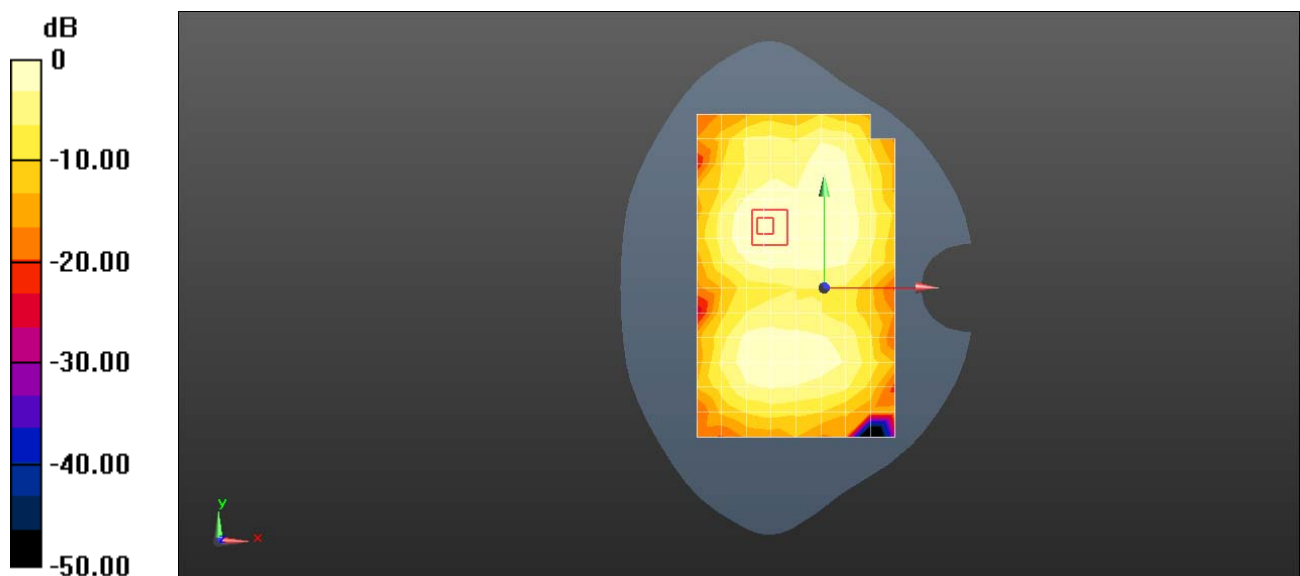
Configuration/Body/Zoom Scan (5x5x7)/Cube 0: Measurement grid: dx=8mm, dy=8mm, dz=5mm

Reference Value = 2.873 V/m; Power Drift = -0.13 dB

Peak SAR (extrapolated) = 0.0970 W/kg

SAR(1 g) = 0.065 W/kg; SAR(10 g) = 0.044 W/kg

Maximum value of SAR (measured) = 0.0853 W/kg



0 dB = 0.0779 W/kg = -11.08 dBW/kg

Test Laboratory: HUAWEI SAR/HAC Lab

ANE-LX2J GSM1900 GPRS 2TS 661CH Left Side 10mm with Battery2-Second Antenna

DUT: ANE-LX2J; Type: Smart Phone; Serial: SAR2

Communication System: UID 0, HW-GSM\GPRS\EGPRS-2TS (0); Frequency: 1880 MHz; Duty Cycle: 1:4.10015

Medium parameters used: $f = 1880$ MHz; $\sigma = 1.517$ S/m; $\epsilon_r = 51.776$; $\rho = 1000$ kg/m³

Phantom section: Flat Section

DASY Configuration:

- ε Probe: EX3DV4 - SN3744; ConvF(7.7, 7.7, 7.7); Calibrated: 2017-7-24;
- ε Sensor-Surface: 1.4mm (Mechanical Surface Detection), z = 1.0, 31.0
- ε Electronics: DAE4 Sn852; Calibrated: 2017-4-27
- ε Phantom: SAM4; Type: SAM; Serial: TP-1620
- ε DASY52 52.8.8(1222); SEMCAD X 14.6.10(7331)

Configuration/Body/Area Scan (5x14x1): Measurement grid: dx=15mm, dy=15mm
Maximum value of SAR (measured) = 0.0988 W/kg

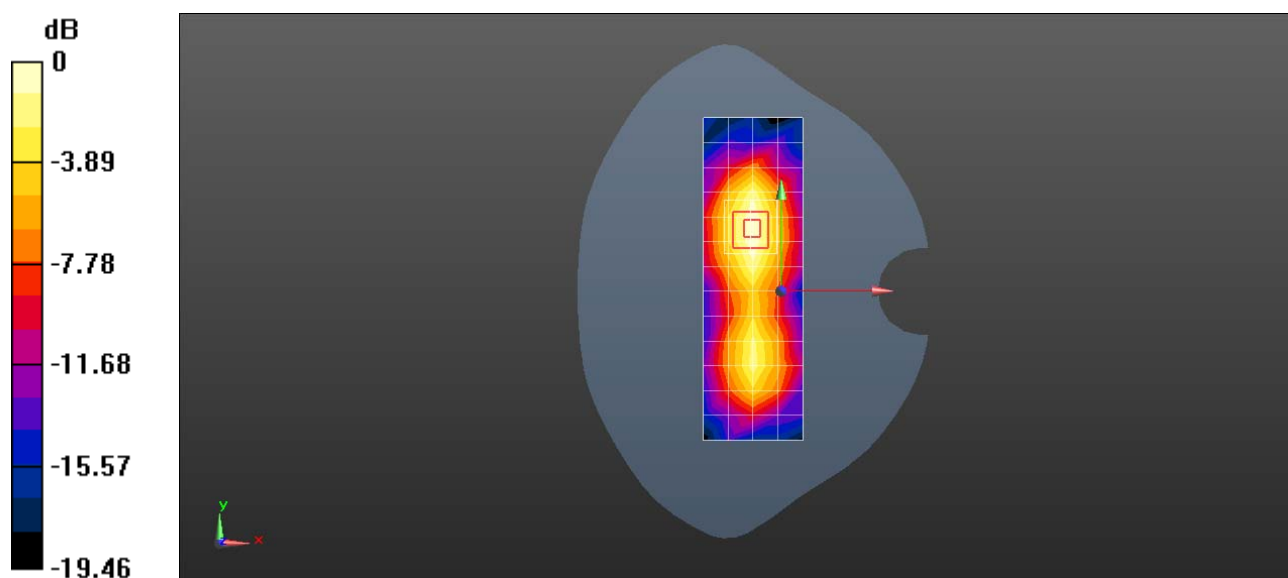
Configuration/Body/Zoom Scan (5x5x7)/Cube 0: Measurement grid: dx=8mm, dy=8mm, dz=5mm

Reference Value = 4.454 V/m; Power Drift = 0.11 dB

Peak SAR (extrapolated) = 0.168 W/kg

SAR(1 g) = 0.105 W/kg; SAR(10 g) = 0.063 W/kg

Maximum value of SAR (measured) = 0.145 W/kg



0 dB = 0.0988 W/kg = -10.05 dBW/kg

Test Laboratory: HUAWEI SAR/HAC Lab

ANE-LX2J UMTS Band 2 9400CH Right touch with Battery3-Second Antenna

DUT: ANE-LX2J; Type: Smart Phone; Serial: SAR5

Communication System: UID 0, HW-UMTS-FDD(WCDMA) (0); Frequency: 1880 MHz; Duty Cycle: 1:1

Medium parameters used: $f = 1880$ MHz; $\sigma = 1.456$ S/m; $\epsilon_r = 39.817$; $\rho = 1000$ kg/m³

Phantom section: Right Section

DASY Configuration:

- Probe: EX3DV4 - SN7489; ConvF(8.66, 8.66, 8.66); Calibrated: 2018-1-9;
- Sensor-Surface: 1.4mm (Mechanical Surface Detection), $z = 1.0, 31.0$
- Electronics: DAE4 Sn1531; Calibrated: 2018-1-3
- Phantom: SAM8; Type: QD 000 P41 AA; Serial: TP-1940
- DASY52 52.8.8(1222); SEMCAD X 14.6.10(7373)

Configuration/Head/Area Scan (9x14x1): Measurement grid: $dx=15$ mm, $dy=15$ mm

Maximum value of SAR (measured) = 0.665 W/kg

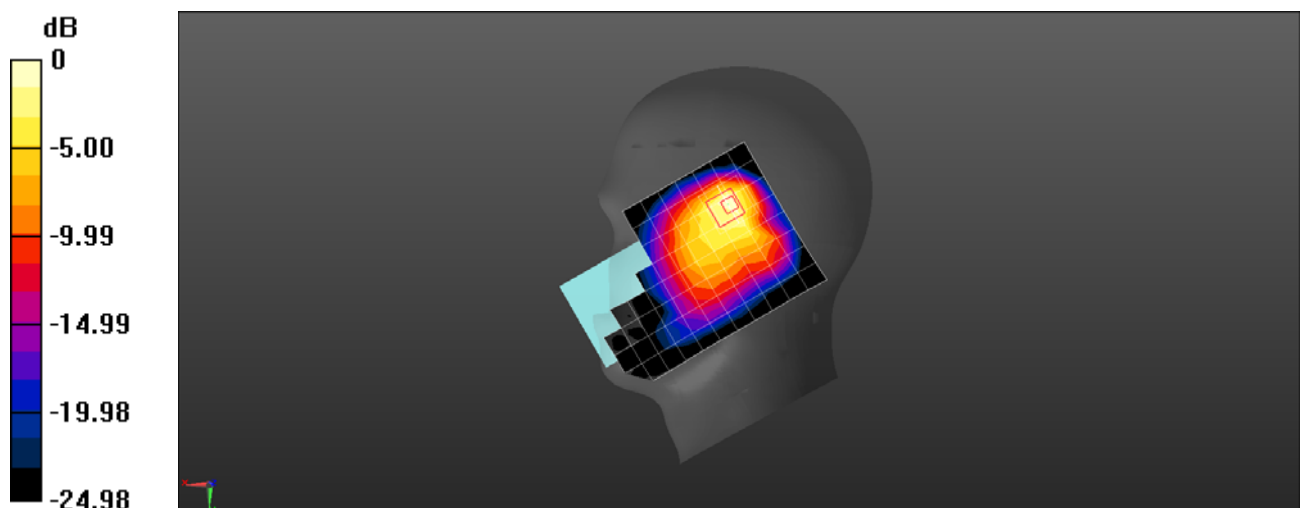
Configuration/Head/Zoom Scan (5x5x7)/Cube 0: Measurement grid: $dx=8$ mm, $dy=8$ mm, $dz=5$ mm

Reference Value = 11.91 V/m; Power Drift = -0.14 dB

Peak SAR (extrapolated) = 1.04 W/kg

SAR(1 g) = 0.449 W/kg; SAR(10 g) = 0.222 W/kg

Maximum value of SAR (measured) = 0.692 W/kg



0 dB = 0.692 W/kg = -1.60 dBW/kg

Test Laboratory: HUAWEI SAR/HAC Lab

ANE-LX2J UMTS Band 2 9400CH Back Side 15mm-Second Antenna

DUT: ANE-LX2J; Type: Smart Phone; Serial: SAR2

Communication System: UID 0, HW-UMTS-FDD(WCDMA) (0); Frequency: 1880 MHz; Duty Cycle: 1:1

Medium parameters used: $f = 1880$ MHz; $\sigma = 1.517$ S/m; $\epsilon_r = 51.776$; $\rho = 1000$ kg/m³

Phantom section: Flat Section

DASY Configuration:

- ε Probe: EX3DV4 - SN3744; ConvF(7.7, 7.7, 7.7); Calibrated: 2017-7-24;
- ε Sensor-Surface: 1.4mm (Mechanical Surface Detection), $z = 1.0, 31.0$
- ε Electronics: DAE4 Sn852; Calibrated: 2017-4-27
- ε Phantom: SAM4; Type: SAM; Serial: TP-1620
- ε DASY52 52.8.8(1222); SEMCAD X 14.6.10(7331)

Configuration/Body/Area Scan (9x14x1): Measurement grid: $dx=15$ mm, $dy=15$ mm

Maximum value of SAR (measured) = 0.161 W/kg

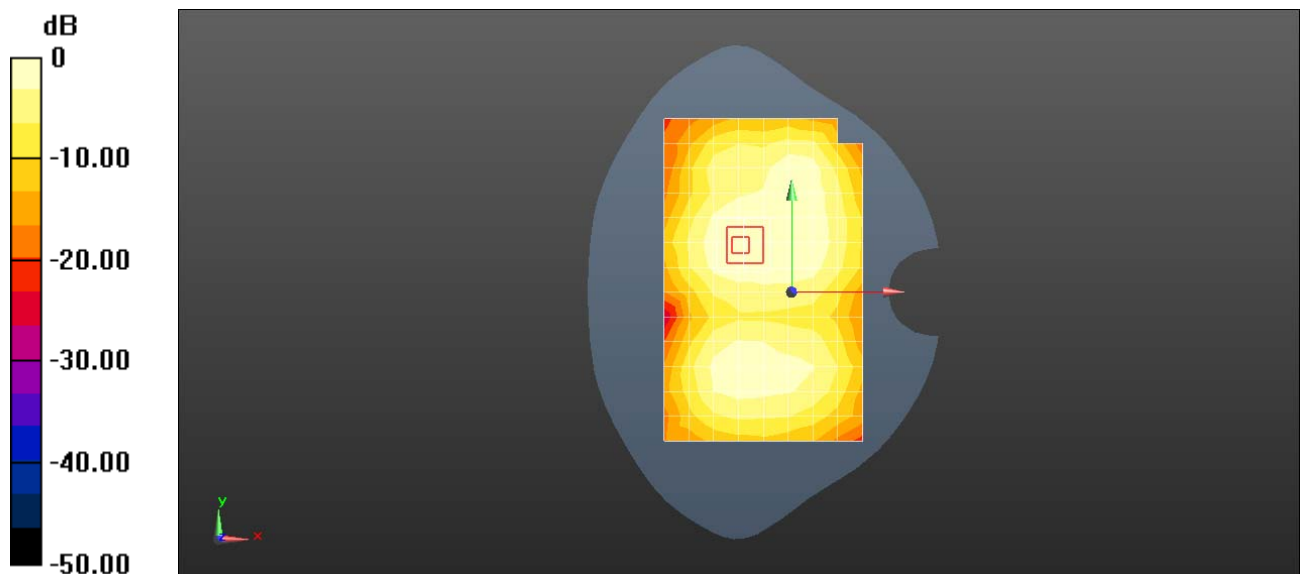
Configuration/Body/Zoom Scan (5x5x7)/Cube 0: Measurement grid: $dx=8$ mm, $dy=8$ mm, $dz=5$ mm

Reference Value = 5.764 V/m; Power Drift = -0.10 dB

Peak SAR (extrapolated) = 0.184 W/kg

SAR(1 g) = 0.127 W/kg; SAR(10 g) = 0.087 W/kg

Maximum value of SAR (measured) = 0.164 W/kg



0 dB = 0.161 W/kg = -7.93 dBW/kg

Test Laboratory: HUAWEI SAR/HAC Lab

ANE-LX2J UMTS Band 2 9400CH Left Side 10mm with Battery3-Second Antenna

DUT: ANE-LX2J; Type: Smart Phone; Serial: SAR2

Communication System: UID 0, HW-UMTS-FDD(WCDMA) (0); Frequency: 1880 MHz; Duty Cycle: 1:1

Medium parameters used: $f = 1880$ MHz; $\sigma = 1.517$ S/m; $\epsilon_r = 51.776$; $\rho = 1000$ kg/m³

Phantom section: Flat Section

DASY Configuration:

- ε Probe: EX3DV4 - SN3744; ConvF(7.7, 7.7, 7.7); Calibrated: 2017-7-24;
- ε Sensor-Surface: 1.4mm (Mechanical Surface Detection), $z = 1.0, 31.0$
- ε Electronics: DAE4 Sn852; Calibrated: 2017-4-27
- ε Phantom: SAM4; Type: SAM; Serial: TP-1620
- ε DASY52 52.8.8(1222); SEMCAD X 14.6.10(7331)

Configuration/Body/Area Scan (5x14x1): Measurement grid: $dx=15$ mm, $dy=15$ mm

Maximum value of SAR (measured) = 0.116 W/kg

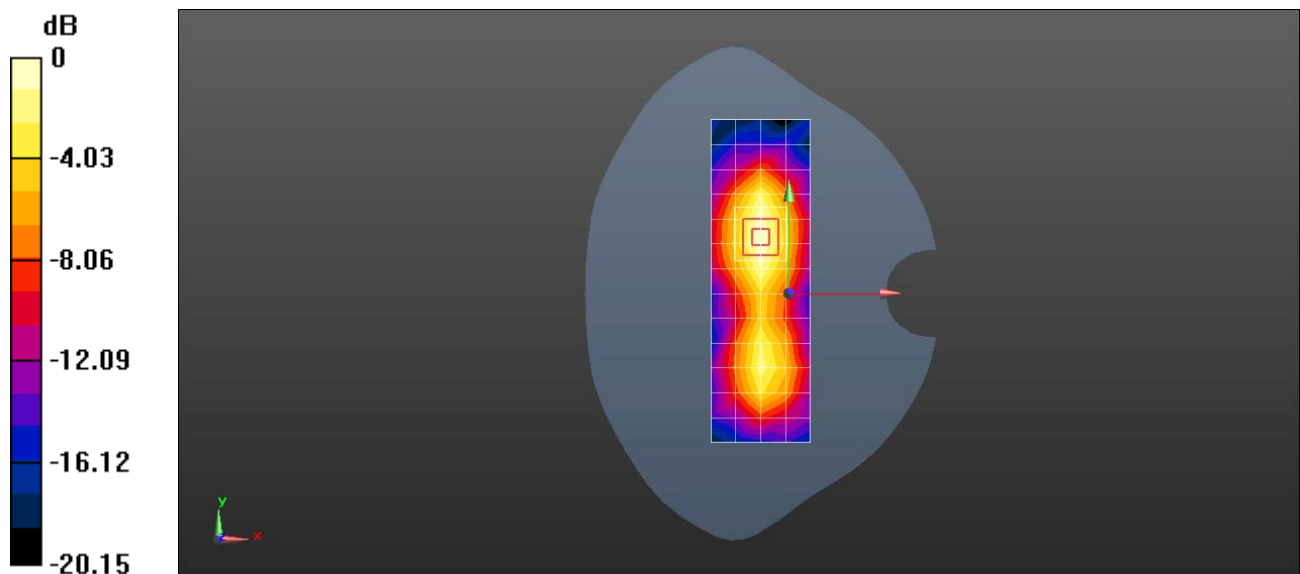
Configuration/Body/Zoom Scan (5x5x7)/Cube 0: Measurement grid: $dx=8$ mm, $dy=8$ mm, $dz=5$ mm

Reference Value = 4.881 V/m; Power Drift = -0.16 dB

Peak SAR (extrapolated) = 0.133 W/kg

SAR(1 g) = 0.082 W/kg; SAR(10 g) = 0.050 W/kg

Maximum value of SAR (measured) = 0.115 W/kg



0 dB = 0.116 W/kg = -9.36 dBW/kg

Test Laboratory: HUAWEI SAR/HAC Lab

ANE-LX2J UMTS Band 5 4182CH Right Touch-Second Antenna

DUT: ANE-LX2J; Type: Smart Phone; Serial: SAR1

Communication System: UID 0, HW-UMTS-FDD(WCDMA) (0); Frequency: 836.4 MHz; Duty Cycle: 1:1

Medium parameters used (interpolated): $f = 836.4$ MHz; $\sigma = 0.869$ S/m; $\epsilon_r = 42.841$; $\rho = 1000$ kg/m³

Phantom section: Right Section

DASY Configuration:

- ε Probe: ES3DV3 - SN3168; ConvF(6.55, 6.55, 6.55); Calibrated: 2017-9-28;
- ε Sensor-Surface: 3mm (Mechanical Surface Detection), $z = 2.0, 32.0$
- ε Electronics: DAE4 Sn1236; Calibrated: 2017-7-21
- ε Phantom: SAM1; Type: SAM; Serial: TP-1475
- ε DASY52 52.8.8(1222); SEMCAD X 14.6.10(7331)

Configuration/Head/Area Scan (9x13x1): Measurement grid: $dx=15$ mm, $dy=15$ mm

[Info: Interpolated medium parameters used for SAR evaluation.](#)

Maximum value of SAR (measured) = 0.392 W/kg

Configuration/Head/Zoom Scan (6x6x7)/Cube 0: Measurement grid: $dx=8$ mm, $dy=8$ mm, $dz=5$ mm

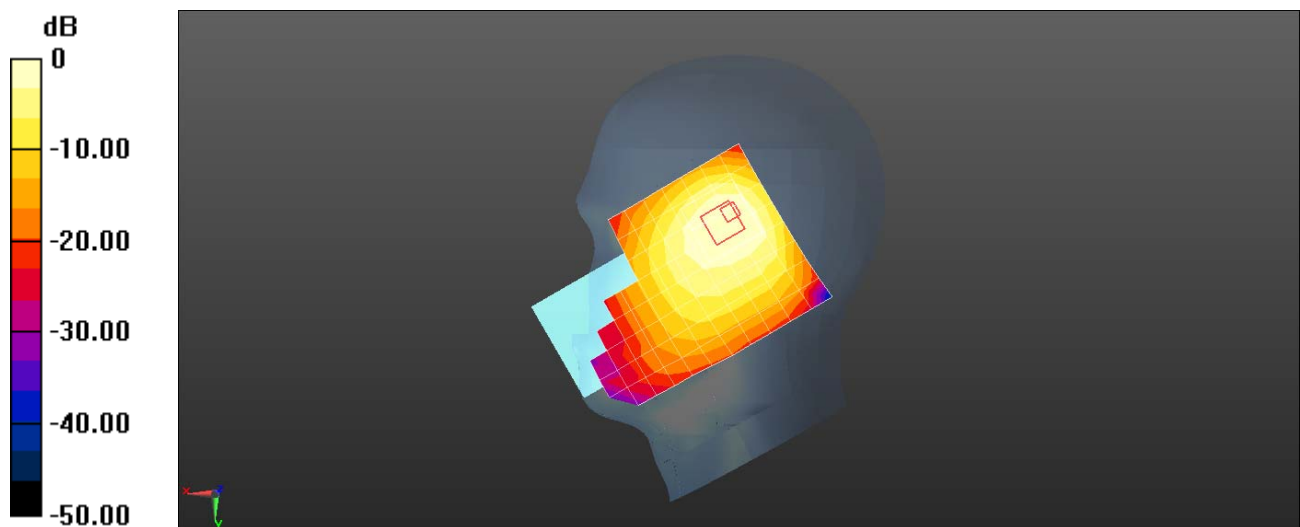
Reference Value = 18.44 V/m; Power Drift = -0.01 dB

Peak SAR (extrapolated) = 0.757 W/kg

SAR(1 g) = 0.388 W/kg; SAR(10 g) = 0.242 W/kg

[Info: Interpolated medium parameters used for SAR evaluation.](#)

Maximum value of SAR (measured) = 0.493 W/kg



0 dB = 0.392 W/kg = -4.07 dBW/kg

Test Laboratory: HUAWEI SAR/HAC Lab

ANE-LX2J UMTS Band 5 4182CH Back Side 15mm with Battery2-Second Antenna

DUT: ANE-LX2J; Type: Smart Phone; Serial: SAR2

Communication System: UID 0, HW-UMTS-FDD(WCDMA) (0); Frequency: 836.4 MHz; Duty Cycle: 1:1

Medium parameters used (interpolated): $f = 836.4$ MHz; $\sigma = 0.943$ S/m; $\epsilon_r = 53.951$; $\rho = 1000$ kg/m³

Phantom section: Flat Section

DASY Configuration:

- ε Probe: ES3DV3 - SN3168; ConvF(6.27, 6.27, 6.27); Calibrated: 2017-9-28;
- ε Sensor-Surface: 3mm (Mechanical Surface Detection), $z = 2.0, 32.0$
- ε Electronics: DAE4 Sn852; Calibrated: 2017-4-27
- ε Phantom: SAM4; Type: SAM; Serial: TP-1620
- ε DASY52 52.8.8(1222); SEMCAD X 14.6.10(7331)

Configuration/Body/Area Scan (9x14x1): Measurement grid: $dx=15$ mm, $dy=15$ mm

[Info: Interpolated medium parameters used for SAR evaluation.](#)

Maximum value of SAR (measured) = 0.179 W/kg

Configuration/Body/Zoom Scan (5x7x7)/Cube 0: Measurement grid: $dx=8$ mm, $dy=8$ mm, $dz=5$ mm

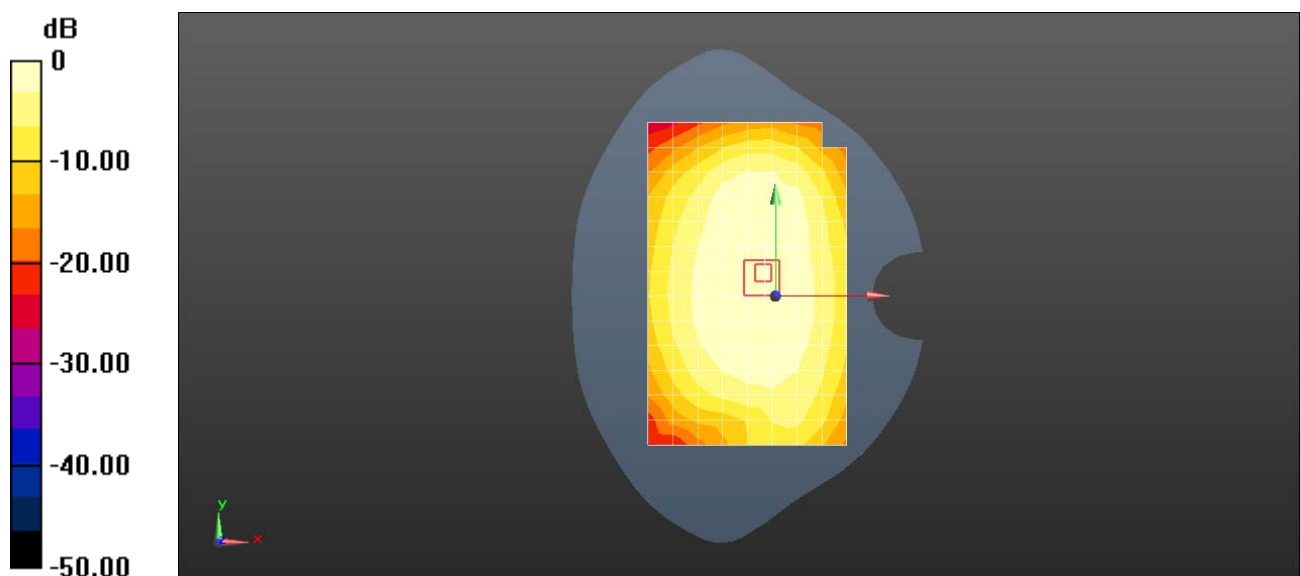
Reference Value = 13.56 V/m; Power Drift = 0.01 dB

Peak SAR (extrapolated) = 0.201 W/kg

SAR(1 g) = 0.168 W/kg; SAR(10 g) = 0.135 W/kg

[Info: Interpolated medium parameters used for SAR evaluation.](#)

Maximum value of SAR (measured) = 0.180 W/kg



0 dB = 0.179 W/kg = -7.47 dBW/kg

Test Laboratory: HUAWEI SAR/HAC Lab

ANE-LX2J UMTS Band 5 4182CH Left Side 10mm-Second Antenna

DUT: ANE-LX2J; Type: Smart Phone; Serial: SAR2

Communication System: UID 0, HW-UMTS-FDD(WCDMA) (0); Frequency: 836.4 MHz; Duty Cycle: 1:1

Medium parameters used (interpolated): $f = 836.4$ MHz; $\sigma = 0.943$ S/m; $\epsilon_r = 53.951$; $\rho = 1000$ kg/m³

Phantom section: Flat Section

DASY Configuration:

- ε Probe: ES3DV3 - SN3168; ConvF(6.27, 6.27, 6.27); Calibrated: 2017-9-28;
- ε Sensor-Surface: 3mm (Mechanical Surface Detection), $z = 2.0, 32.0$
- ε Electronics: DAE4 Sn852; Calibrated: 2017-4-27
- ε Phantom: SAM4; Type: SAM; Serial: TP-1620
- ε DASY52 52.8.8(1222); SEMCAD X 14.6.10(7331)

Configuration/Body/Area Scan (5x14x1): Measurement grid: $dx=15$ mm, $dy=15$ mm

[Info: Interpolated medium parameters used for SAR evaluation.](#)

Maximum value of SAR (measured) = 0.135 W/kg

Configuration/Body/Zoom Scan (5x5x7)/Cube 0: Measurement grid: $dx=8$ mm, $dy=8$ mm, $dz=5$ mm

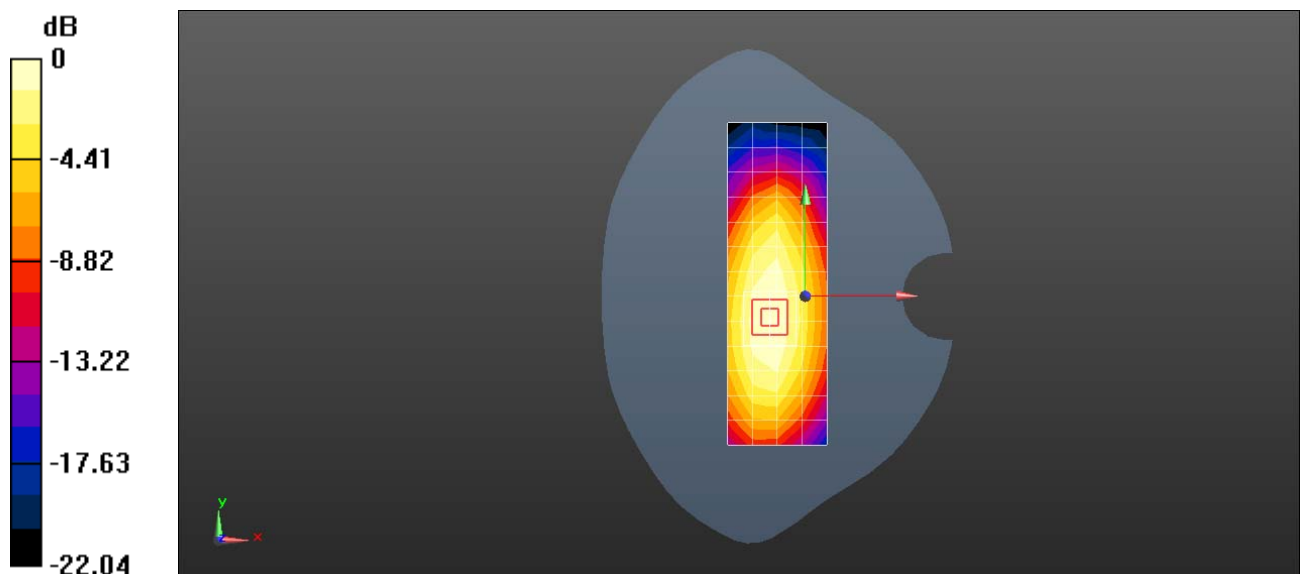
Reference Value = 12.16 V/m; Power Drift = 0.04 dB

Peak SAR (extrapolated) = 0.171 W/kg

SAR(1 g) = 0.124 W/kg; SAR(10 g) = 0.088 W/kg

[Info: Interpolated medium parameters used for SAR evaluation.](#)

Maximum value of SAR (measured) = 0.141 W/kg



0 dB = 0.135 W/kg = -8.70 dBW/kg

Test Laboratory: HUAWEI SAR/HAC Lab

ANE-LX2J LTE Band 5 10M 1RB 25 Offset 20450CH Right Touch-Second Antenna

DUT: ANE-LX2J; Type: Smart Phone; Serial: SAR2

Communication System: UID 0, LTE-FDD (SC-FDMA, 10MHz, QPSK/16-QAM)(0);

Frequency: 829 MHz; Duty Cycle: 1:1

Medium parameters used: $f = 829$ MHz; $\sigma = 0.924$ S/m; $\epsilon_r = 42.394$; $\rho = 1000$ kg/m³

Phantom section: Right Section

DASY Configuration:

- ε Probe: ES3DV3 - SN3168; ConvF(6.55, 6.55, 6.55); Calibrated: 2017-9-28;
- ε Sensor-Surface: 3mm (Mechanical Surface Detection), $z = 2.0, 32.0$
- ε Electronics: DAE4 Sn852; Calibrated: 2017-4-27
- ε Phantom: SAM3; Type: SAM; Serial: TP-1597
- ε DASY52 52.8.8(1222); SEMCAD X 14.6.10(7331)

Configuration/Head/Area Scan (9x14x1): Measurement grid: $dx=15$ mm, $dy=15$ mm

Maximum value of SAR (measured) = 1.13 W/kg

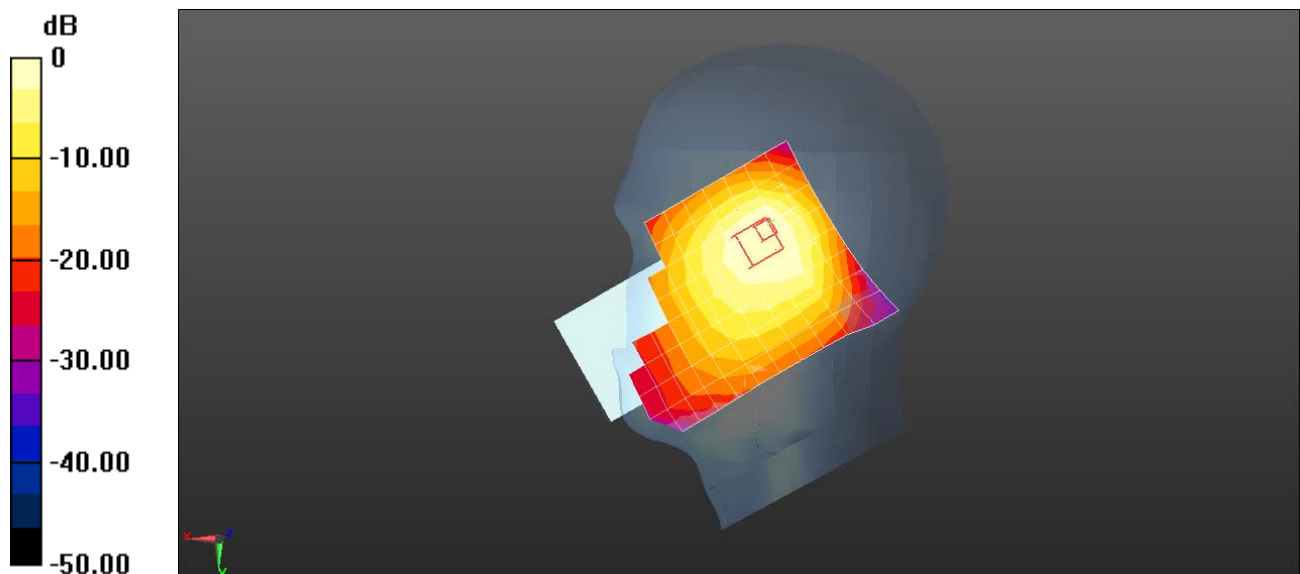
Configuration/Head/Zoom Scan (6x7x7)/Cube 0: Measurement grid: $dx=8$ mm, $dy=8$ mm, $dz=5$ mm

Reference Value = 31.20 V/m; Power Drift = 0.07 dB

Peak SAR (extrapolated) = 1.63 W/kg

SAR(1 g) = 0.826 W/kg; SAR(10 g) = 0.532 W/kg

Maximum value of SAR (measured) = 1.31 W/kg



0 dB = 1.13 W/kg = 0.53 dBW/kg

Test Laboratory: HUAWEI SAR/HAC Lab

ANE-LX2J LTE Band 5 QPSK 1RB 25 offset 20600CH Back Side 15mm with Battery2-Second Antenna

DUT: ANE-LX2J; Type: Smart Phone; Serial: SAR5

Communication System: UID 0, LTE-FDD (SC-FDMA, 10MHz, QPSK/16-QAM) (0); Frequency: 844 MHz; Duty Cycle: 1:1

Medium parameters used: $f = 844 \text{ MHz}$; $\sigma = 0.976 \text{ S/m}$; $\epsilon_r = 55.077$; $\rho = 1000 \text{ kg/m}^3$

Phantom section: Flat Section

DASY Configuration:

- Probe: EX3DV4 - SN7489; ConvF(10.8, 10.8, 10.8); Calibrated: 2018-1-9;
- Sensor-Surface: 1.4mm (Mechanical Surface Detection), $z = 1.0, 31.0$
- Electronics: DAE4 Sn1531; Calibrated: 2018-1-3
- Phantom: SAM8; Type: QD 000 P41 AA; Serial: TP-1940
- DASY52 52.8.8(1222); SEMCAD X 14.6.10(7373)

Configuration/Body/Area Scan (9x14x1): Measurement grid: $dx=15\text{mm}$, $dy=15\text{mm}$

Maximum value of SAR (measured) = 0.218 W/kg

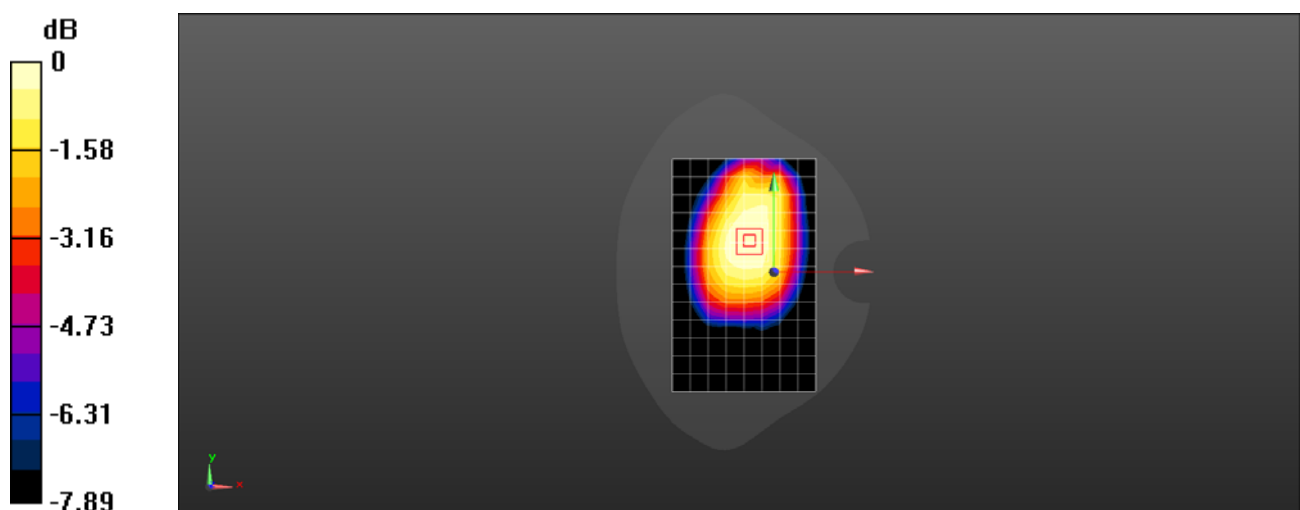
Configuration/Body/Zoom Scan (5x5x7)/Cube 0: Measurement grid: $dx=8\text{mm}$, $dy=8\text{mm}$, $dz=5\text{mm}$

Reference Value = 13.07 V/m; Power Drift = -0.03 dB

Peak SAR (extrapolated) = 0.238 W/kg

SAR(1 g) = 0.185 W/kg; SAR(10 g) = 0.145 W/kg

Maximum value of SAR (measured) = 0.219 W/kg



0 dB = 0.219 W/kg = -6.60 dBW/kg

Test Laboratory: HUAWEI SAR/HAC Lab

ANE-LX2J LTE Band 5 QPSK 1RB 25 offset 20525CH Left Side 10mm-Second Antenna

DUT: ANE-LX2J; Type: Smart Phone; Serial: SAR5

Communication System: UID 0, LTE-FDD (SC-FDMA, 10MHz, QPSK/16-QAM) (0); Frequency: 836.5 MHz; Duty Cycle: 1:1

Medium parameters used (interpolated): $f = 836.5$ MHz; $\sigma = 0.967$ S/m; $\epsilon_r = 55.277$; $\rho = 1000$ kg/m³

Phantom section: Flat Section

DASY Configuration:

- Probe: EX3DV4 - SN7489; ConvF(10.8, 10.8, 10.8); Calibrated: 2018-1-9;
- Sensor-Surface: 1.4mm (Mechanical Surface Detection), $z = -9.0, 31.0$
- Electronics: DAE4 Sn1531; Calibrated: 2018-1-3
- Phantom: SAM8; Type: QD 000 P41 AA; Serial: TP-1940
- DASY52 52.8.8(1222); SEMCAD X 14.6.10(7373)

Configuration/Body/Area Scan (5x14x1): Measurement grid: $dx=15$ mm, $dy=15$ mm

[Info: Interpolated medium parameters used for SAR evaluation.](#)

Maximum value of SAR (measured) = 0.321 W/kg

Configuration/Body/Zoom Scan (5x6x7)/Cube 0: Measurement grid: $dx=8$ mm, $dy=8$ mm, $dz=5$ mm

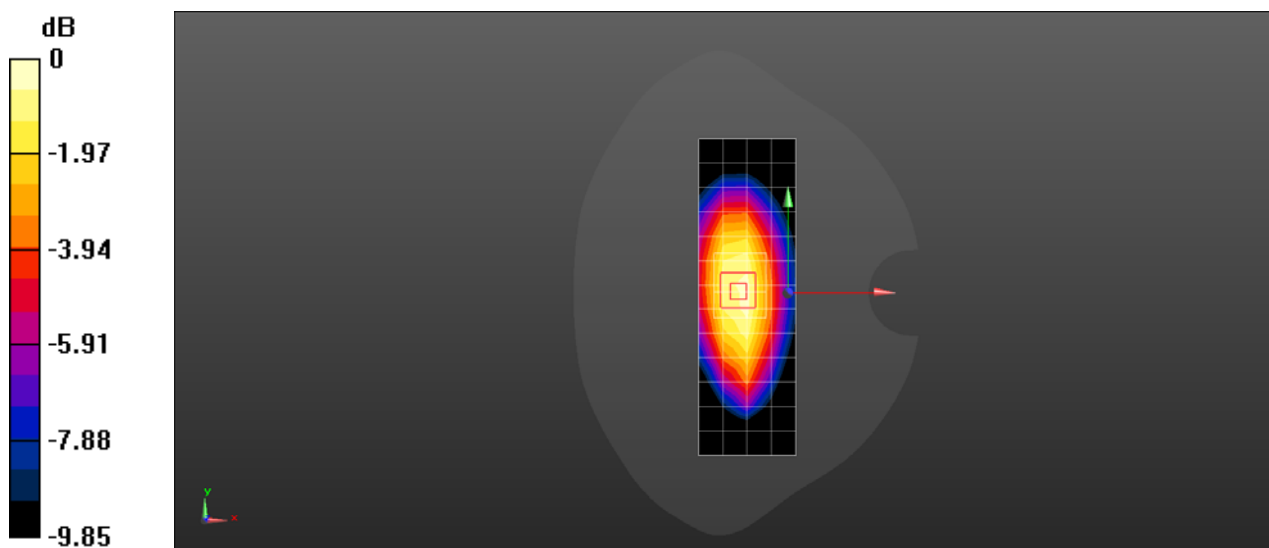
Reference Value = 16.49 V/m; Power Drift = 0.02 dB

Peak SAR (extrapolated) = 0.393 W/kg

SAR(1 g) = 0.264 W/kg; SAR(10 g) = 0.181 W/kg

[Info: Interpolated medium parameters used for SAR evaluation.](#)

Maximum value of SAR (measured) = 0.348 W/kg



0 dB = 0.348 W/kg = -4.59 dBW/kg

Test Laboratory: HUAWEI SAR/HAC Lab

ANE-LX2J LTE Band 7 20M QPSK 1RB 99 Offset 21100CH Right Touch with Battery2-Second Antenna

DUT: ANE-LX2J; Type: Smart Phone; Serial: SAR1

Communication System: UID 0, LTE-FDD (SC-FDMA, 20MHz, QPSK/16-QAM) (0); Frequency: 2535 MHz; Duty Cycle: 1:1

Medium parameters used: $f = 2535$ MHz; $\sigma = 1.887$ S/m; $\epsilon_r = 40.175$; $\rho = 1000$ kg/m³

Phantom section: Right Section

DASY Configuration:

- ε Probe: EX3DV4 - SN3736; ConvF(7.01, 7.01, 7.01); Calibrated: 2017-4-27;
- ε Sensor-Surface: 1.4mm (Mechanical Surface Detection), z = 1.0, 31.0
- ε Electronics: DAE4 Sn1236; Calibrated: 2017-7-21
- ε Phantom: SAM1; Type: SAM; Serial: TP-1475
- ε DASY52 52.8.8(1222); SEMCAD X 14.6.10(7331)

Configuration/Head/Area Scan (11x16x1): Measurement grid: dx=12mm, dy=12mm

Maximum value of SAR (measured) = 1.14 W/kg

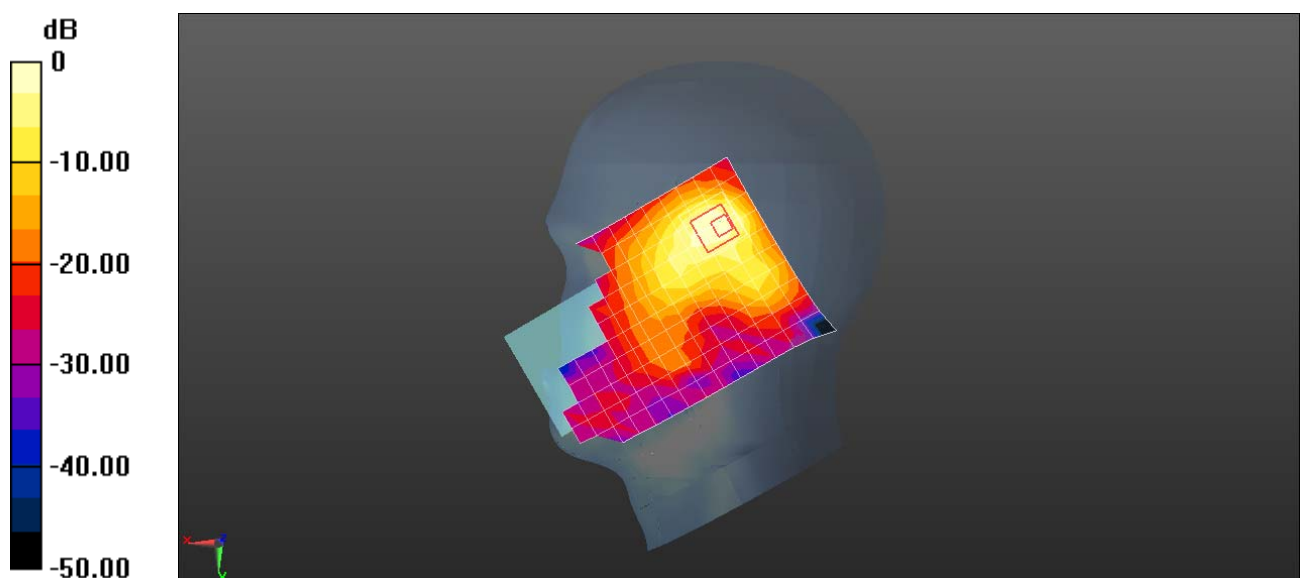
Configuration/Head/Zoom Scan (7x7x7)/Cube 0: Measurement grid: dx=5mm, dy=5mm, dz=5mm

Reference Value = 6.931 V/m; Power Drift = 0.19 dB

Peak SAR (extrapolated) = 1.66 W/kg

SAR(1 g) = 0.687 W/kg; SAR(10 g) = 0.327 W/kg

Maximum value of SAR (measured) = 1.21 W/kg



0 dB = 1.14 W/kg = 0.57 dBW/kg

Test Laboratory: HUAWEI SAR/HAC Lab

ANE-LX2J LTE Band 7 20M QPSK 50%RB 0 Offset 20850CH Back Side 15mm-Second Antenna

DUT: ANE-LX2J; Type: Smart Phone; Serial: SAR1

Communication System: UID 0, LTE-FDD (SC-FDMA, 20MHz, QPSK/16-QAM) (0); Frequency: 2510 MHz; Duty Cycle: 1:1

Medium parameters used: $f = 2510$ MHz; $\sigma = 2.052$ S/m; $\epsilon_r = 50.623$; $\rho = 1000$ kg/m³

Phantom section: Flat Section

DASY Configuration:

- ε Probe: EX3DV4 - SN3736; ConvF(7.21, 7.21, 7.21); Calibrated: 2017-4-27;
- ε Sensor-Surface: 1.4mm (Mechanical Surface Detection), $z = 1.0, 31.0$
- ε Electronics: DAE4 Sn1236; Calibrated: 2017-7-21
- ε Phantom: SAM2; Type: SAM; Serial: TP:1474
- ε DASY52 52.8.8(1222); SEMCAD X 14.6.10(7331)

Configuration/Body/Area Scan (10x16x1): Measurement grid: $dx=12$ mm, $dy=12$ mm

Maximum value of SAR (measured) = 0.325 W/kg

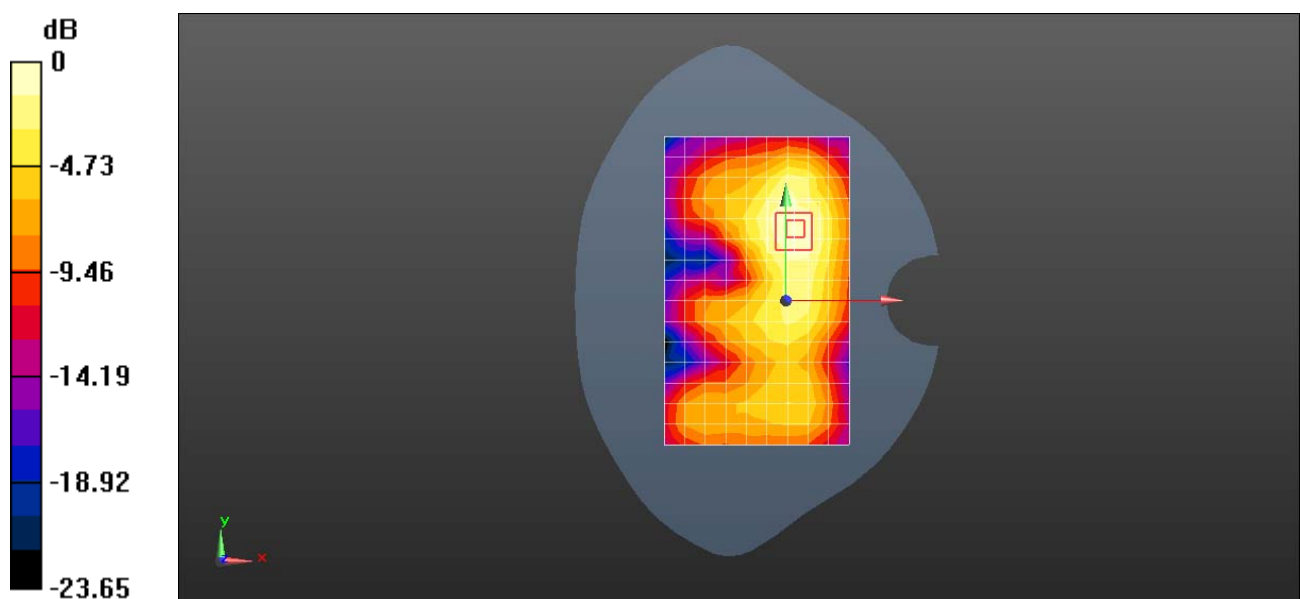
Configuration/Body/Zoom Scan (7x7x7)/Cube 0: Measurement grid: $dx=5$ mm, $dy=5$ mm, $dz=5$ mm

Reference Value = 6.738 V/m; Power Drift = -0.18 dB

Peak SAR (extrapolated) = 0.403 W/kg

SAR(1 g) = 0.244 W/kg; SAR(10 g) = 0.145 W/kg

Maximum value of SAR (measured) = 0.346 W/kg



0 dB = 0.325 W/kg = -4.88 dBW/kg

Test Laboratory: HUAWEI SAR/HAC Lab

ANE-LX2J LTE Band 7 20M QPSK 1RB 99 Offset 21100CH Back Side 10mm-Second Antenna

DUT: ANE-LX2J; Type: Smart Phone; Serial: SAR1

Communication System: UID 0, LTE-FDD (SC-FDMA, 20MHz, QPSK/16-QAM) (0); Frequency: 2535 MHz; Duty Cycle: 1:1

Medium parameters used: $f = 2535$ MHz; $\sigma = 2.022$ S/m; $\epsilon_r = 52.803$; $\rho = 1000$ kg/m³

Phantom section: Flat Section

DASY Configuration:

- ε Probe: EX3DV4 - SN3736; ConvF(6.96, 6.96, 6.96); Calibrated: 2017-4-27;
- ε Sensor-Surface: 1.4mm (Mechanical Surface Detection), z = 1.0, 31.0
- ε Electronics: DAE4 Sn1236; Calibrated: 2017-7-21
- ε Phantom: SAM2; Type: SAM; Serial: TP:1474
- ε DASY52 52.8.8(1222); SEMCAD X 14.6.10(7331)

Configuration/Body/Area Scan (10x16x1): Measurement grid: dx=12mm, dy=12mm
Maximum value of SAR (measured) = 0.189 W/kg

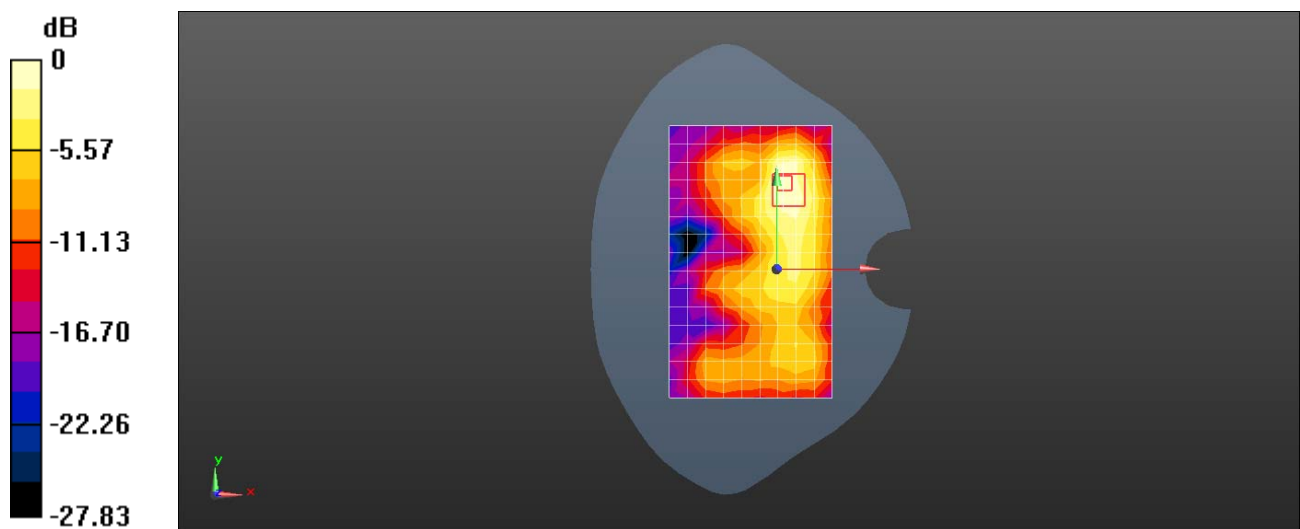
Configuration/Body/Zoom Scan (8x8x7)/Cube 0: Measurement grid: dx=5mm, dy=5mm, dz=5mm

Reference Value = 3.851 V/m; Power Drift = -0.07 dB

Peak SAR (extrapolated) = 0.286 W/kg

SAR(1 g) = 0.122 W/kg; SAR(10 g) = 0.061 W/kg

Maximum value of SAR (measured) = 0.217 W/kg



0 dB = 0.189 W/kg = -7.24 dBW/kg

Test Laboratory: HUAWEI SAR/HAC Lab

ANE-LX2J LTE Band 26 15M QPSK 1RB 38 Offset 26965CH Right Touch-Second Antenna

DUT: ANE-LX2J; Type: Smart Phone; Serial: SAR1

Communication System: UID 0, LTE-FDD (SC-FDMA, 15MHz, QPSK/16-QAM) (0); Frequency: 841.5 MHz; Duty Cycle: 1:1

Medium parameters used (interpolated): $f = 841.5$ MHz; $\sigma = 0.871$ S/m; $\epsilon_r = 42.822$; $\rho = 1000$ kg/m³

Phantom section: Right Section

DASY Configuration:

- ε Probe: ES3DV3 - SN3168; ConvF(6.55, 6.55, 6.55); Calibrated: 2017-9-28;
- ε Sensor-Surface: 3mm (Mechanical Surface Detection), $z = 2.0, 32.0$
- ε Electronics: DAE4 Sn1236; Calibrated: 2017-7-21
- ε Phantom: SAM1; Type: SAM; Serial: TP-1475
- ε DASY52 52.8.8(1222); SEMCAD X 14.6.10(7331)

Configuration/Head/Area Scan (9x13x1): Measurement grid: $dx=15$ mm, $dy=15$ mm

[Info: Interpolated medium parameters used for SAR evaluation.](#)

Maximum value of SAR (measured) = 0.784 W/kg

Configuration/Head/Zoom Scan (5x5x7)/Cube 0: Measurement grid: $dx=8$ mm, $dy=8$ mm, $dz=5$ mm

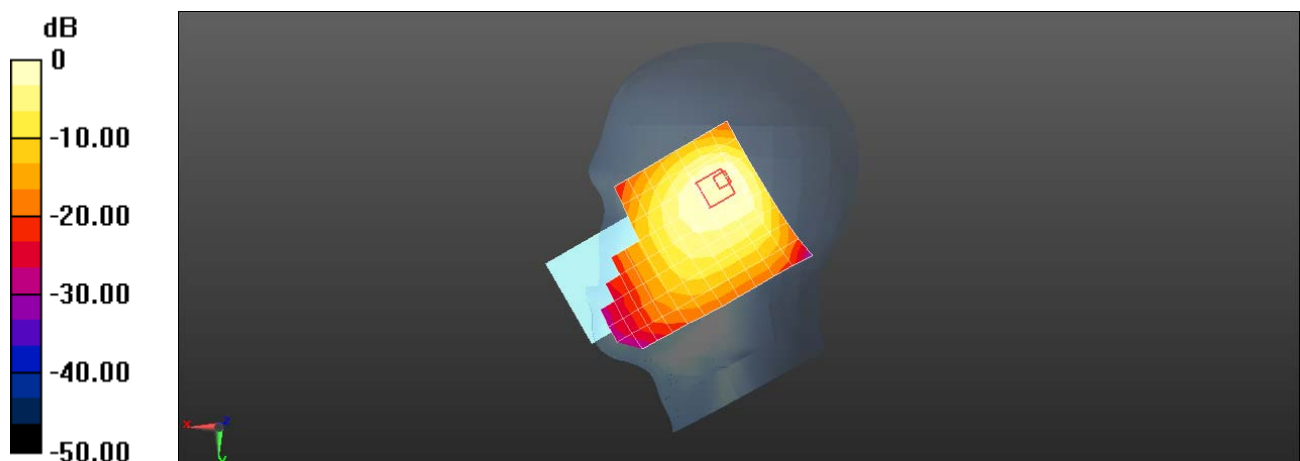
Reference Value = 27.55 V/m; Power Drift = -0.19 dB

Peak SAR (extrapolated) = 1.45 W/kg

SAR(1 g) = 0.773 W/kg; SAR(10 g) = 0.490 W/kg

[Info: Interpolated medium parameters used for SAR evaluation.](#)

Maximum value of SAR (measured) = 0.988 W/kg



0 dB = 0.784 W/kg = -1.06 dBW/kg

Test Laboratory: HUAWEI SAR/HAC Lab

ANE-LX2J LTE Band 26 15M QPSK 1RB 38 Offset 26965CH Back Side 15mm-Second Antenna

DUT: ANE-LX2J; Type: Smart Phone; Serial: SAR1

Communication System: UID 0, LTE-FDD (SC-FDMA, 15MHz, QPSK/16-QAM) (0); Frequency: 841.5 MHz; Duty Cycle: 1:1

Medium parameters used (interpolated): $f = 841.5$ MHz; $\sigma = 0.985$ S/m; $\epsilon_r = 54.293$; $\rho = 1000$ kg/m³

Phantom section: Flat Section

DASY Configuration:

- ε Probe: EX3DV4 - SN3736; ConvF(9.36, 9.36, 9.36); Calibrated: 2017-4-27;
- ε Sensor-Surface: 1.4mm (Mechanical Surface Detection), $z = 1.0, 31.0$
- ε Electronics: DAE4 Sn1236; Calibrated: 2017-7-21
- ε Phantom: SAM2; Type: SAM; Serial: TP:1474
- ε DASY52 52.8.8(1222); SEMCAD X 14.6.10(7331)

Configuration/Body/Area Scan (9x13x1): Measurement grid: $dx=15$ mm, $dy=15$ mm

[Info: Interpolated medium parameters used for SAR evaluation.](#)

Maximum value of SAR (measured) = 0.205 W/kg

Configuration/Body/Zoom Scan (6x6x7)/Cube 0: Measurement grid: $dx=8$ mm, $dy=8$ mm, $dz=5$ mm

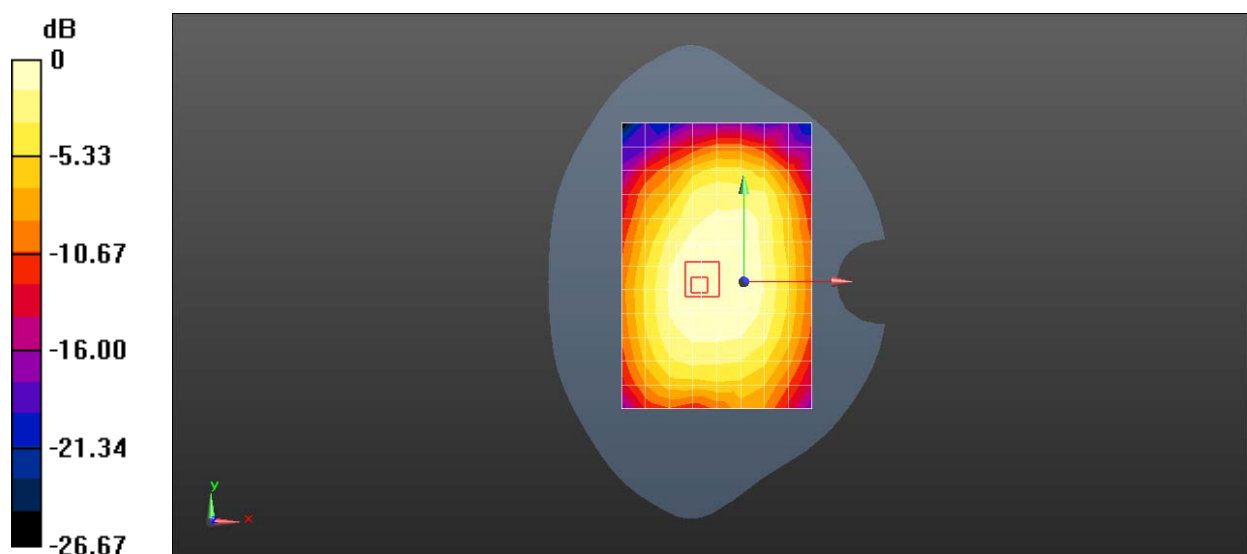
Reference Value = 14.48 V/m; Power Drift = 0.13 dB

Peak SAR (extrapolated) = 0.272 W/kg

SAR(1 g) = 0.219 W/kg; SAR(10 g) = 0.167 W/kg

[Info: Interpolated medium parameters used for SAR evaluation.](#)

Maximum value of SAR (measured) = 0.241 W/kg



0 dB = 0.205 W/kg = -6.88 dBW/kg

Test Laboratory: HUAWEI SAR/HAC Lab

ANE-LX2J LTE Band 26 15M QPSK 1RB 38 Offset 26965CH Left Side 10mm-Second Antenna

DUT: ANE-LX2J; Type: Smart Phone; Serial: SAR1

Communication System: UID 0, LTE-FDD (SC-FDMA, 15MHz, QPSK/16-QAM) (0); Frequency: 841.5 MHz; Duty Cycle: 1:1

Medium parameters used (interpolated): $f = 841.5$ MHz; $\sigma = 1$ S/m; $\epsilon_r = 54.283$; $\rho = 1000$ kg/m³

Phantom section: Flat Section

DASY Configuration:

- ε Probe: EX3DV4 - SN3736; ConvF(9.36, 9.36, 9.36); Calibrated: 2017-4-27;
- ε Sensor-Surface: 1.4mm (Mechanical Surface Detection), $z = 1.0, 31.0$
- ε Electronics: DAE4 Sn1236; Calibrated: 2017-7-21
- ε Phantom: SAM2; Type: SAM; Serial: TP:1474
- ε DASY52 52.8.8(1222); SEMCAD X 14.6.10(7331)

Configuration/Body/Area Scan (6x13x1): Measurement grid: $dx=15$ mm, $dy=15$ mm

[Info: Interpolated medium parameters used for SAR evaluation.](#)

Maximum value of SAR (measured) = 0.320 W/kg

Configuration/Body/Zoom Scan (5x5x7)/Cube 0: Measurement grid: $dx=8$ mm, $dy=8$ mm, $dz=5$ mm

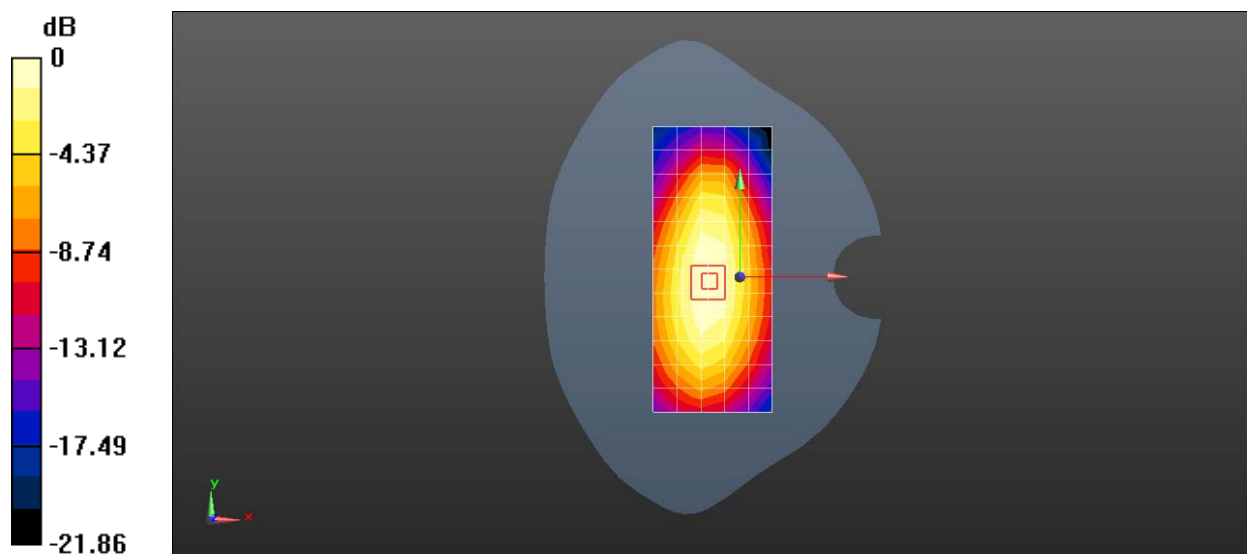
Reference Value = 19.80 V/m; Power Drift = -0.02 dB

Peak SAR (extrapolated) = 0.382 W/kg

SAR(1 g) = 0.260 W/kg; SAR(10 g) = 0.176 W/kg

[Info: Interpolated medium parameters used for SAR evaluation.](#)

Maximum value of SAR (measured) = 0.341 W/kg



0 dB = 0.320 W/kg = -4.95 dBW/kg

Test Laboratory: HUAWEI SAR/HAC Lab

ANE-LX2J LTE Band 41 QPSK 50%RB 50 offset 40540CH Right tilt-Second Antenna

DUT: ANE-LX2J; Type: Smart Phone; Serial: SAR5

Communication System: UID 0, LTE-TDD (SC-FDMA, 20MHz, QPSK/16-QAM) (0); Frequency: 2585 MHz; Duty Cycle: 1:1.57943

Medium parameters used: $f = 2585$ MHz; $\sigma = 1.952$ S/m; $\epsilon_r = 39.691$; $\rho = 1000$ kg/m³

Phantom section: Right Section

DASY Configuration:

- Probe: EX3DV4 - SN7489; ConvF(7.76, 7.76, 7.76); Calibrated: 2018-1-9;
- Sensor-Surface: 1.4mm (Mechanical Surface Detection), $z = 1.0, 31.0$
- Electronics: DAE4 Sn1531; Calibrated: 2018-1-3
- Phantom: SAM8; Type: QD 000 P41 AA; Serial: TP-1940
- DASY52 52.8.8(1222); SEMCAD X 14.6.10(7373)

Configuration/Head/Area Scan (11x17x1): Measurement grid: $dx=12$ mm, $dy=12$ mm
Maximum value of SAR (measured) = 0.851 W/kg

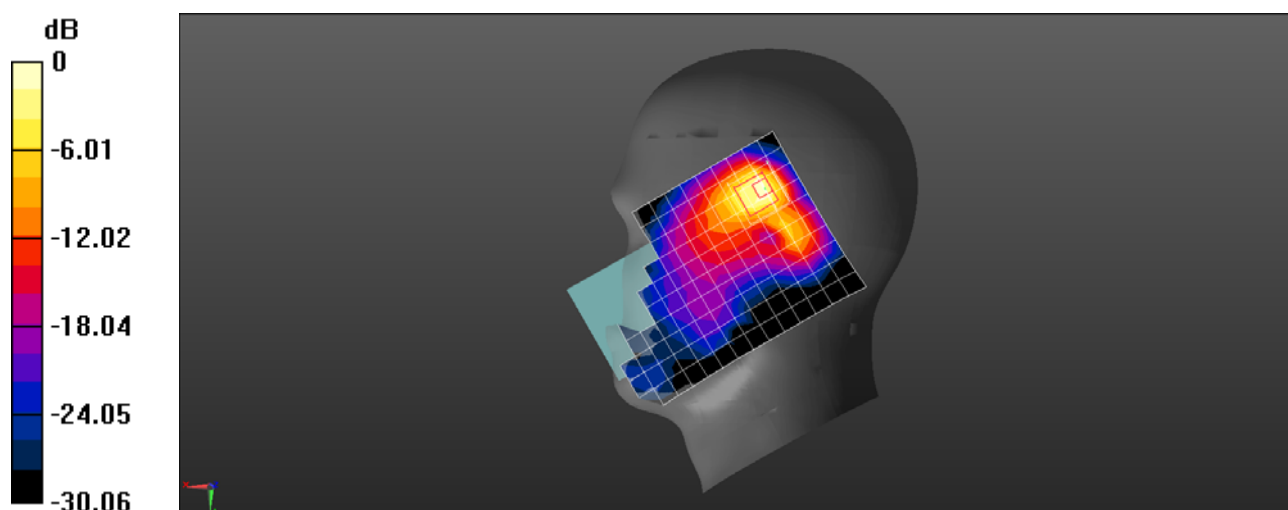
Configuration/Head/Zoom Scan (7x7x7)/Cube 0: Measurement grid: $dx=5$ mm, $dy=5$ mm, $dz=5$ mm

Reference Value = 3.554 V/m; Power Drift = 0.15 dB

Peak SAR (extrapolated) = 1.37 W/kg

SAR(1 g) = 0.483 W/kg; SAR(10 g) = 0.210 W/kg

Maximum value of SAR (measured) = 1.01 W/kg



0 dB = 1.01 W/kg = 0.02 dBW/kg

Test Laboratory: HUAWEI SAR/HAC Lab

ANE-LX2J LTE Band 41 20M QPSK 1RB 99 Offset 41140CH Back Side 15mm-Second Antenna

DUT: ANE-LX2J; Type: Smart Phone; Serial: SAR2

Communication System: UID 0, LTE-TDD (SC-FDMA, 20MHz, QPSK/16-QAM) (0); Frequency: 2645 MHz; Duty Cycle: 1:1.57906

Medium parameters used: $f = 2645$ MHz; $\sigma = 2.172$ S/m; $\epsilon_r = 51.75$; $\rho = 1000$ kg/m³

Phantom section: Flat Section

DASY Configuration:

- ε Probe: ES3DV3 - SN3168; ConvF(4.31, 4.31, 4.31); Calibrated: 2017-9-28;
- ε Sensor-Surface: 3mm (Mechanical Surface Detection), $z = 2.0, 32.0$
- ε Electronics: DAE4 Sn852; Calibrated: 2017-4-27
- ε Phantom: SAM4; Type: SAM; Serial: TP-1620
- ε DASY52 52.8.8(1222); SEMCAD X 14.6.10(7331)

Configuration/Body/Area Scan (11x17x1): Measurement grid: $dx=12$ mm, $dy=12$ mm
Maximum value of SAR (measured) = 0.174 W/kg

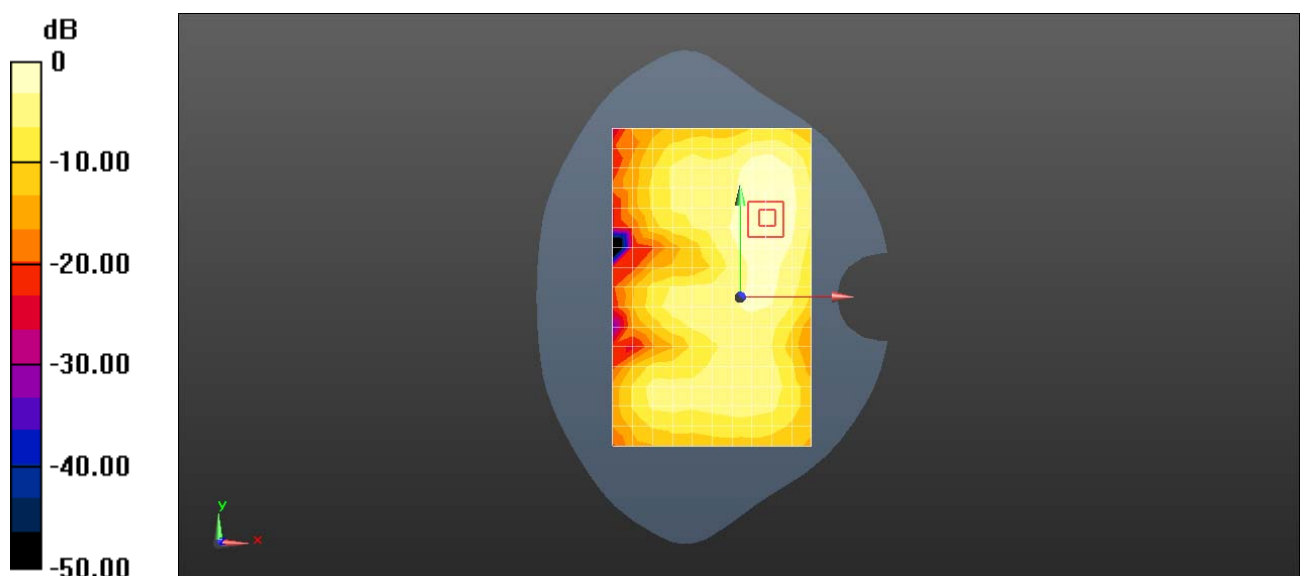
Configuration/Body/Zoom Scan (7x7x7)/Cube 0: Measurement grid: $dx=5$ mm, $dy=5$ mm, $dz=5$ mm

Reference Value = 5.334 V/m; Power Drift = -0.06 dB

Peak SAR (extrapolated) = 0.272 W/kg

SAR(1 g) = 0.153 W/kg; SAR(10 g) = 0.088 W/kg

Maximum value of SAR (measured) = 0.186 W/kg



0 dB = 0.174 W/kg = -7.59 dBW/kg

Test Laboratory: HUAWEI SAR/HAC Lab

ANE-LX2J LTE Band 41 20M QPSK 50%RB 50 Offset 40540CH Left Side 10mm-Second Antenna

DUT: ANE-LX2J; Type: Smart Phone; Serial: SAR2

Communication System: UID 0, LTE-TDD (SC-FDMA, 20MHz, QPSK/16-QAM) (0); Frequency: 2585 MHz; Duty Cycle: 1:1.57906

Medium parameters used: $f = 2585$ MHz; $\sigma = 2.114$ S/m; $\epsilon_r = 51.827$; $\rho = 1000$ kg/m³

Phantom section: Flat Section

DASY Configuration:

- ε Probe: ES3DV3 - SN3168; ConvF(4.31, 4.31, 4.31); Calibrated: 2017-9-28;
- ε Sensor-Surface: 3mm (Mechanical Surface Detection), $z = 2.0, 32.0$
- ε Electronics: DAE4 Sn852; Calibrated: 2017-4-27
- ε Phantom: SAM4; Type: SAM; Serial: TP-1620
- ε DASY52 52.8.8(1222); SEMCAD X 14.6.10(7331)

Configuration/Body/Area Scan (6x17x1): Measurement grid: $dx=12$ mm, $dy=12$ mm

Maximum value of SAR (measured) = 0.135 W/kg

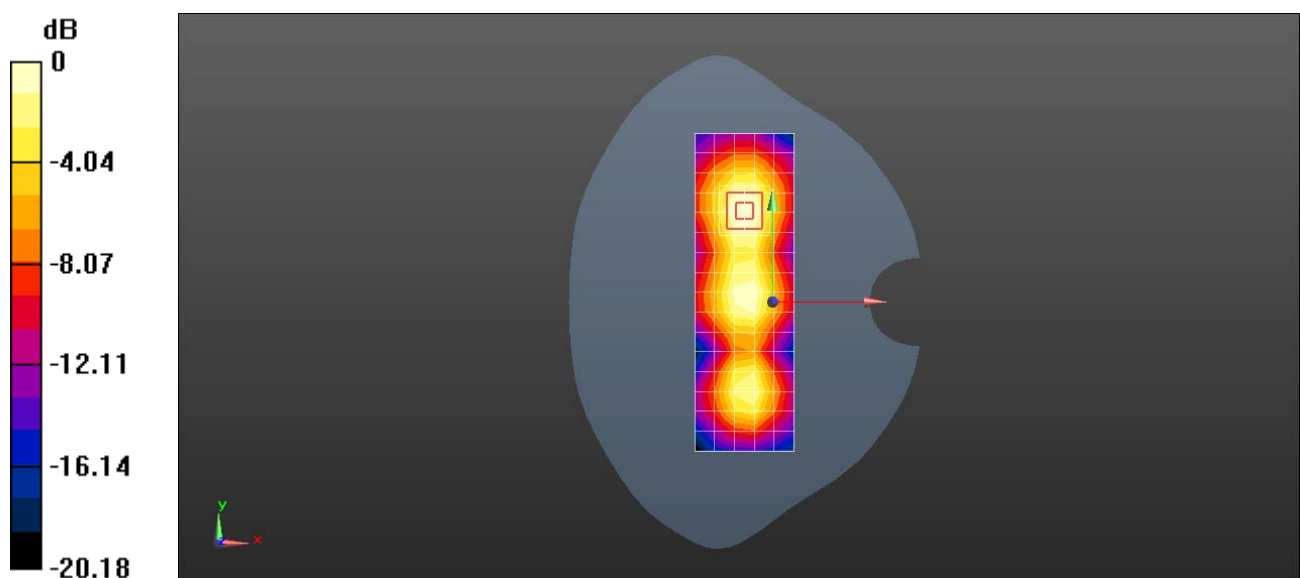
Configuration/Body/Zoom Scan (7x7x7)/Cube 0: Measurement grid: $dx=5$ mm, $dy=5$ mm, $dz=5$ mm

Reference Value = 8.392 V/m; Power Drift = -0.07 dB

Peak SAR (extrapolated) = 0.241 W/kg

SAR(1 g) = 0.132 W/kg; SAR(10 g) = 0.070 W/kg

Maximum value of SAR (measured) = 0.166 W/kg



0 dB = 0.135 W/kg = -8.70 dBW/kg

Test Laboratory: HUAWEI SAR/HAC Lab

ANE-LX2J GSM850 190CH Right touch with Battery2-Main Antenna

DUT: ANE-LX2J; Type: Smart Phone; Serial: SAR5

Communication System: UID 0, HW-GSM\GPRS\EGPRS-1TS (0); Frequency: 836.6 MHz; Duty Cycle: 1:8.30042

Medium parameters used: $f = 837$ MHz; $\sigma = 0.92$ S/m; $\epsilon_r = 41.022$; $\rho = 1000$ kg/m³

Phantom section: Right Section

DASY Configuration:

- Probe: EX3DV4 - SN7489; ConvF(10.39, 10.39, 10.39); Calibrated: 2018-1-9;
- Sensor-Surface: 1.4mm (Mechanical Surface Detection), $z = 1.0, 31.0$
- Electronics: DAE4 Sn1531; Calibrated: 2018-1-3
- Phantom: SAM8; Type: QD 000 P41 AA; Serial: TP-1940
- DASY52 52.8.8(1222); SEMCAD X 14.6.10(7373)

Configuration/Head/Area Scan (9x14x1): Measurement grid: $dx=15$ mm, $dy=15$ mm

Maximum value of SAR (measured) = 0.223 W/kg

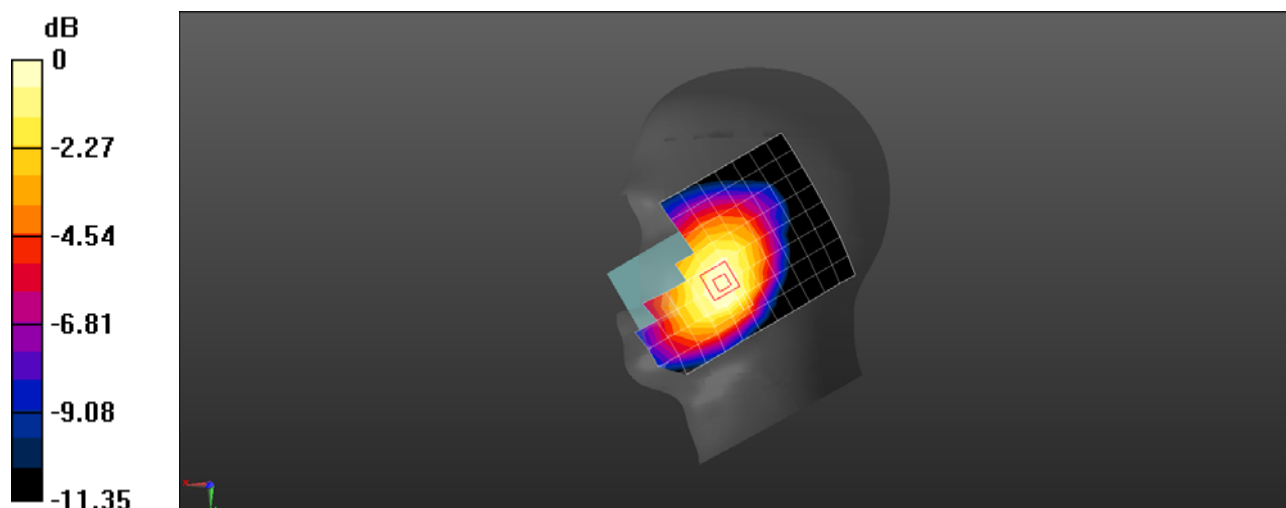
Configuration/Head/Zoom Scan (6x5x7)/Cube 0: Measurement grid: $dx=8$ mm, $dy=8$ mm, $dz=5$ mm

Reference Value = 4.379 V/m; Power Drift = 0.12 dB

Peak SAR (extrapolated) = 0.247 W/kg

SAR(1 g) = 0.199 W/kg; SAR(10 g) = 0.156 W/kg

Maximum value of SAR (measured) = 0.229 W/kg



0 dB = 0.229 W/kg = -6.40 dBW/kg

Test Laboratory: HUAWEI SAR/HAC Lab

ANE-LX2J GSM850 190CH Back Side 15mm with Battery2 SIM2-Main Antenna

DUT: ANE-LX2J; Type: Smart Phone; Serial: SAR5

Communication System: UID 0, HW-GSM\GPRS\EGPRS-1TS (0); Frequency: 836.6 MHz; Duty Cycle: 1:8.30042

Medium parameters used: $f = 837$ MHz; $\sigma = 0.973$ S/m; $\epsilon_r = 55.107$; $\rho = 1000$ kg/m³

Phantom section: Flat Section

DASY Configuration:

- Probe: EX3DV4 - SN7489; ConvF(10.8, 10.8, 10.8); Calibrated: 2018-1-9;
- Sensor-Surface: 1.4mm (Mechanical Surface Detection), $z = 1.0, 31.0$
- Electronics: DAE4 Sn1531; Calibrated: 2018-1-3
- Phantom: SAM8; Type: QD 000 P41 AA; Serial: 1940
- DASY52 52.8.8(1222); SEMCAD X 14.6.10(7373)

Configuration/Body/Area Scan (9x14x1): Measurement grid: $dx=15$ mm, $dy=15$ mm

Maximum value of SAR (measured) = 0.338 W/kg

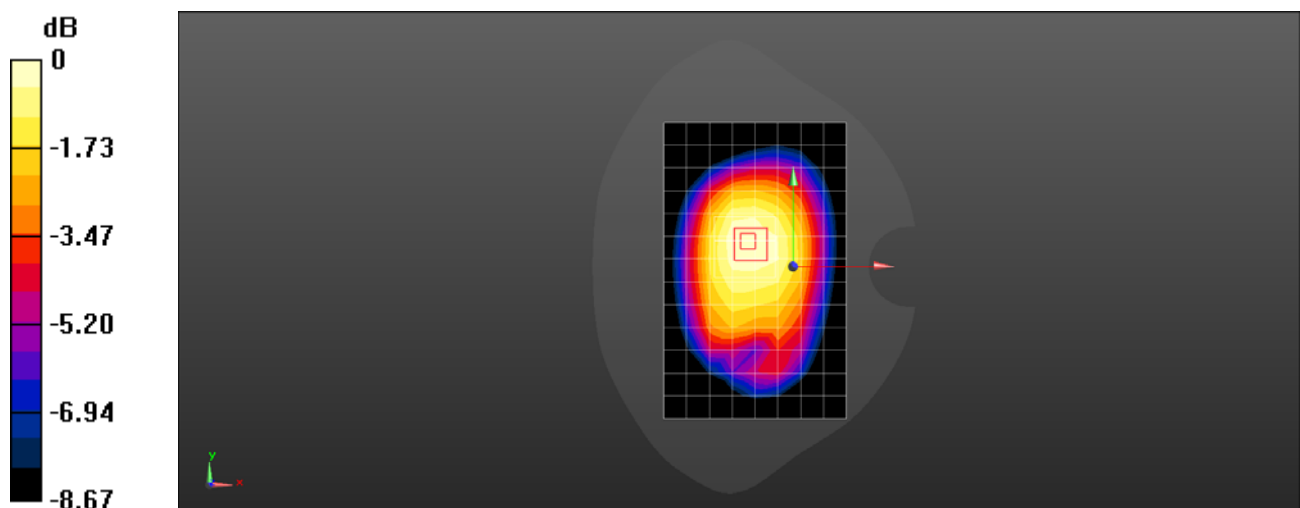
Configuration/Body/Zoom Scan (6x6x7)/Cube 0: Measurement grid: $dx=8$ mm, $dy=8$ mm, $dz=5$ mm

Reference Value = 16.74 V/m; Power Drift = 0.04 dB

Peak SAR (extrapolated) = 0.380 W/kg

SAR(1 g) = 0.292 W/kg; SAR(10 g) = 0.226 W/kg

Maximum value of SAR (measured) = 0.349 W/kg



0 dB = 0.349 W/kg = -4.58 dBW/kg

Test Laboratory: HUAWEI SAR/HAC Lab

ANE-LX2J GSM850 GPRS 2TS 190CH Back Side 10mm-Main Antenna

DUT: ANE-LX2J; Type: Smart Phone; Serial: SAR1

Communication System: UID 0, HW-GSM\GPRS\EGPRS-2TS (0); Frequency: 836.6 MHz; Duty Cycle: 1:4.10015

Medium parameters used: $f = 837$ MHz; $\sigma = 0.983$ S/m; $\epsilon_r = 54.313$; $\rho = 1000$ kg/m³

Phantom section: Flat Section

DASY Configuration:

- ε Probe: EX3DV4 - SN3736; ConvF(9.36, 9.36, 9.36); Calibrated: 2017-4-27;
- ε Sensor-Surface: 1.4mm (Mechanical Surface Detection), z = 1.0, 31.0
- ε Electronics: DAE4 Sn1236; Calibrated: 2017-7-21
- ε Phantom: SAM2; Type: SAM; Serial: TP:1474
- ε DASY52 52.8.8(1222); SEMCAD X 14.6.10(7331)

Configuration/Body/Area Scan (9x13x1): Measurement grid: dx=15mm, dy=15mm

Maximum value of SAR (measured) = 0.343 W/kg

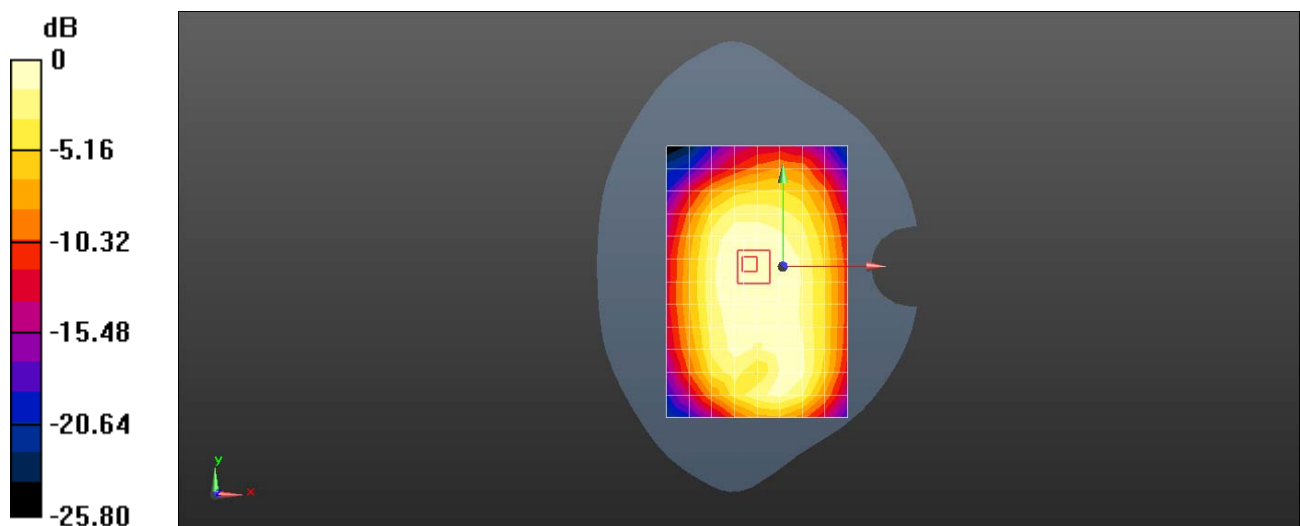
Configuration/Body/Zoom Scan (6x6x7)/Cube 0: Measurement grid: dx=8mm, dy=8mm, dz=5mm

Reference Value = 19.58 V/m; Power Drift = -0.05 dB

Peak SAR (extrapolated) = 0.382 W/kg

SAR(1 g) = 0.286 W/kg; SAR(10 g) = 0.213 W/kg

Maximum value of SAR (measured) = 0.350 W/kg



0 dB = 0.343 W/kg = -4.65 dBW/kg

Test Laboratory: HUAWEI SAR/HAC Lab

ANE-LX2J GSM1900 661CH Left Touch-Main Antenna

DUT: ANE-LX2J; Type: Smart Phone; Serial: SAR2

Communication System: UID 0, HW-GSM\GPRS\EGPRS-1TS (0); Frequency: 1880 MHz; Duty Cycle: 1:8.30042

Medium parameters used: $f = 1880$ MHz; $\sigma = 1.4$ S/m; $\epsilon_r = 38.889$; $\rho = 1000$ kg/m³

Phantom section: Left Section

DASY Configuration:

- ε Probe: EX3DV4 - SN3744; ConvF(8, 8, 8); Calibrated: 2017-7-24;
- ε Sensor-Surface: 1.4mm (Mechanical Surface Detection), $z = 1.0, 31.0$
- ε Electronics: DAE4 Sn852; Calibrated: 2017-4-27
- ε Phantom: SAM3; Type: SAM; Serial: TP-1597
- ε DASY52 52.8.8(1222); SEMCAD X 14.6.10(7331)

Configuration/Head/Area Scan (9x13x1): Measurement grid: $dx=15$ mm, $dy=15$ mm

Maximum value of SAR (measured) = 0.148 W/kg

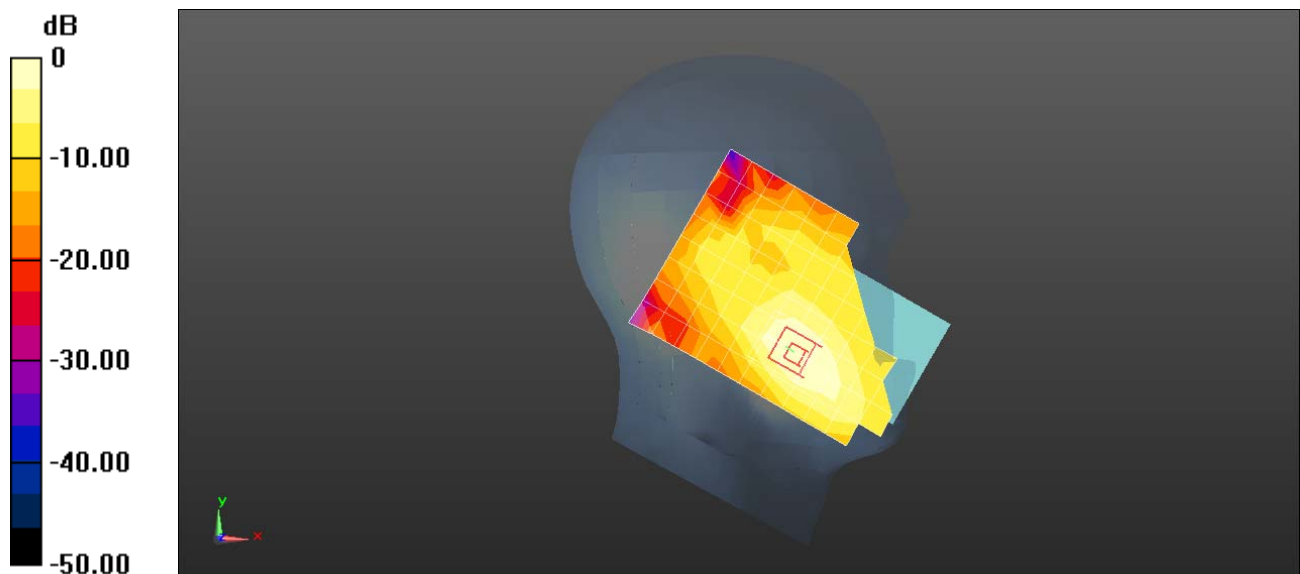
Configuration/Head/Zoom Scan (5x5x7)/Cube 0: Measurement grid: $dx=8$ mm, $dy=8$ mm, $dz=5$ mm

Reference Value = 4.083 V/m; Power Drift = -0.09 dB

Peak SAR (extrapolated) = 0.169 W/kg

SAR(1 g) = 0.106 W/kg; SAR(10 g) = 0.065 W/kg

Maximum value of SAR (measured) = 0.142 W/kg



0 dB = 0.148 W/kg = -8.30 dBW/kg

Test Laboratory: HUAWEI SAR/HAC Lab

ANE-LX2J GSM1900 661CH Back Side 15mm-Main Antenna

DUT: ANE-LX2J; Type: Smart Phone; Serial: SAR2

Communication System: UID 0, HW-GSM\GPRS\EGPRS-1TS (0); Frequency: 1880 MHz; Duty Cycle: 1:8.30042

Medium parameters used: $f = 1880$ MHz; $\sigma = 1.517$ S/m; $\epsilon_r = 51.776$; $\rho = 1000$ kg/m³

Phantom section: Flat Section

DASY Configuration:

- ε Probe: EX3DV4 - SN3744; ConvF(7.7, 7.7, 7.7); Calibrated: 2017-7-24;
- ε Sensor-Surface: 1.4mm (Mechanical Surface Detection), z = 1.0, 31.0
- ε Electronics: DAE4 Sn852; Calibrated: 2017-4-27
- ε Phantom: SAM4; Type: SAM; Serial: TP-1620
- ε DASY52 52.8.8(1222); SEMCAD X 14.6.10(7331)

Configuration/Body/Area Scan (9x14x1): Measurement grid: dx=15mm, dy=15mm

Maximum value of SAR (measured) = 0.353 W/kg

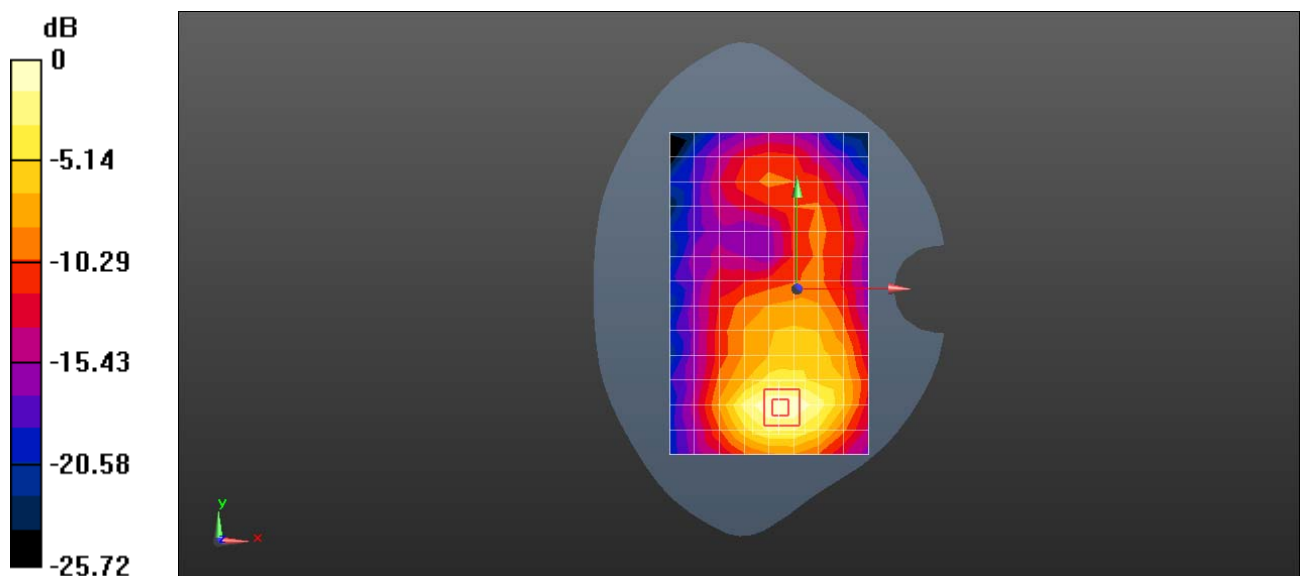
Configuration/Body/Zoom Scan (5x5x7)/Cube 0: Measurement grid: dx=8mm, dy=8mm, dz=5mm

Reference Value = 4.412 V/m; Power Drift = -0.15 dB

Peak SAR (extrapolated) = 0.428 W/kg

SAR(1 g) = 0.280 W/kg; SAR(10 g) = 0.172 W/kg

Maximum value of SAR (measured) = 0.380 W/kg



0 dB = 0.353 W/kg = -4.52 dBW/kg

Test Laboratory: HUAWEI SAR/HAC Lab

ANE-LX2J GSM1900 GPRS 2TS 810CH Bottom Side 10mm with Battery2-Main Antenna

DUT: ANE-LX2J; Type: Smart Phone; Serial: SAR2

Communication System: UID 0, HW-GSM\GPRS\EGPRS-2TS (0); Frequency: 1909.8 MHz; Duty Cycle: 1:4.10015

Medium parameters used: $f = 1910$ MHz; $\sigma = 1.541$ S/m; $\epsilon_r = 51.749$; $\rho = 1000$ kg/m³

Phantom section: Flat Section

DASY Configuration:

- ε Probe: EX3DV4 - SN3744; ConvF(7.7, 7.7, 7.7); Calibrated: 2017-7-24;
- ε Sensor-Surface: 1.4mm (Mechanical Surface Detection), z = 1.0, 31.0
- ε Electronics: DAE4 Sn852; Calibrated: 2017-4-27
- ε Phantom: SAM4; Type: SAM; Serial: TP-1620
- ε DASY52 52.8.8(1222); SEMCAD X 14.6.10(7331)

Configuration/Body/Area Scan (5x9x1): Measurement grid: dx=15mm, dy=15mm
Maximum value of SAR (measured) = 0.793 W/kg

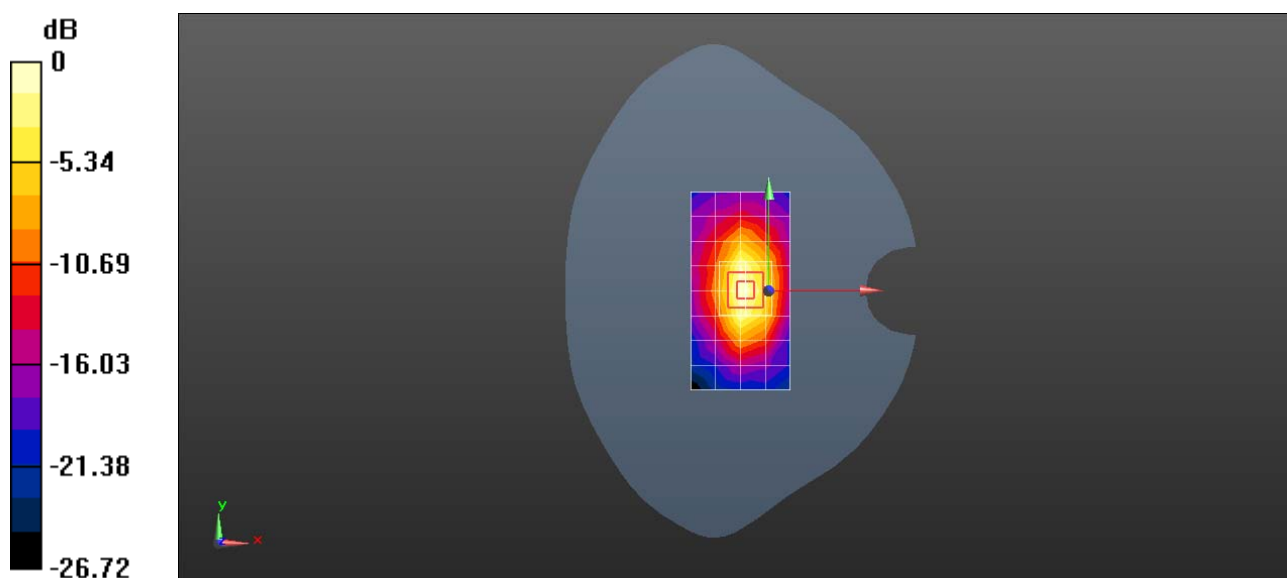
Configuration/Body/Zoom Scan (5x5x7)/Cube 0: Measurement grid: dx=8mm, dy=8mm, dz=5mm

Reference Value = 20.98 V/m; Power Drift = -0.16 dB

Peak SAR (extrapolated) = 1.01 W/kg

SAR(1 g) = 0.602 W/kg; SAR(10 g) = 0.328 W/kg

Maximum value of SAR (measured) = 0.876 W/kg



0 dB = 0.793 W/kg = -1.01 dBW/kg

Test Laboratory: HUAWEI SAR/HAC Lab

ANE-LX2J UMTS Band 2 9400CH Left touch with Battery3-Main Antenna

DUT: ANE-LX2J; Type: Smart Phone; Serial: SAR5

Communication System: UID 0, HW-UMTS-FDD(WCDMA) (0); Frequency: 1880 MHz; Duty Cycle: 1:1

Medium parameters used: $f = 1880$ MHz; $\sigma = 1.456$ S/m; $\epsilon_r = 39.817$; $\rho = 1000$ kg/m³

Phantom section: Left Section

DASY Configuration:

- Probe: EX3DV4 - SN7489; ConvF(8.66, 8.66, 8.66); Calibrated: 2018-1-9;
- Sensor-Surface: 1.4mm (Mechanical Surface Detection), $z = 1.0, 31.0$
- Electronics: DAE4 Sn1531; Calibrated: 2018-1-3
- Phantom: SAM8; Type: QD 000 P41 AA; Serial: TP-1940
- DASY52 52.8.8(1222); SEMCAD X 14.6.10(7373)

Configuration/Head/Area Scan (9x14x1): Measurement grid: $dx=15$ mm, $dy=15$ mm

Maximum value of SAR (measured) = 0.302 W/kg

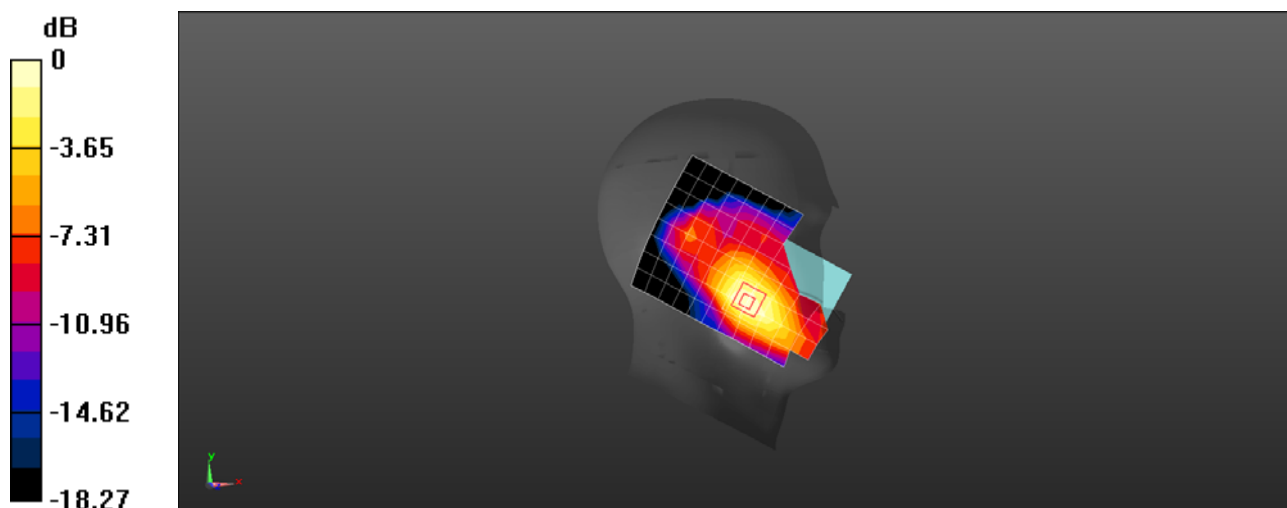
Configuration/Head/Zoom Scan (5x5x7)/Cube 0: Measurement grid: $dx=8$ mm, $dy=8$ mm, $dz=5$ mm

Reference Value = 5.957 V/m; Power Drift = 0.15 dB

Peak SAR (extrapolated) = 0.332 W/kg

SAR(1 g) = 0.207 W/kg; SAR(10 g) = 0.127 W/kg

Maximum value of SAR (measured) = 0.283 W/kg



0 dB = 0.283 W/kg = -5.48 dBW/kg

Test Laboratory: HUAWEI SAR/HAC Lab

ANE-LX2J UMTS Band 2 9538CH Back Side 15mm with Battery3-Main Antenna

DUT: ANE-LX2J; Type: Smart Phone; Serial: SAR2

Communication System: UID 0, HW-UMTS-FDD(WCDMA) (0); Frequency: 1907.6 MHz; Duty Cycle: 1:1

Medium parameters used: $f = 1908$ MHz; $\sigma = 1.552$ S/m; $\epsilon_r = 52.87$; $\rho = 1000$ kg/m³

Phantom section: Flat Section

DASY Configuration:

- ε Probe: ES3DV3 - SN3168; ConvF(4.98, 4.98, 4.98); Calibrated: 2017-9-28;
- ε Sensor-Surface: 3mm (Mechanical Surface Detection), $z = 2.0, 32.0$
- ε Electronics: DAE4 Sn852; Calibrated: 2017-4-27
- ε Phantom: SAM4; Type: SAM; Serial: TP-1620
- ε DASY52 52.8.8(1222); SEMCAD X 14.6.10(7331)

Configuration/Body/Area Scan (9x14x1): Measurement grid: $dx=15$ mm, $dy=15$ mm

Maximum value of SAR (measured) = 0.731 W/kg

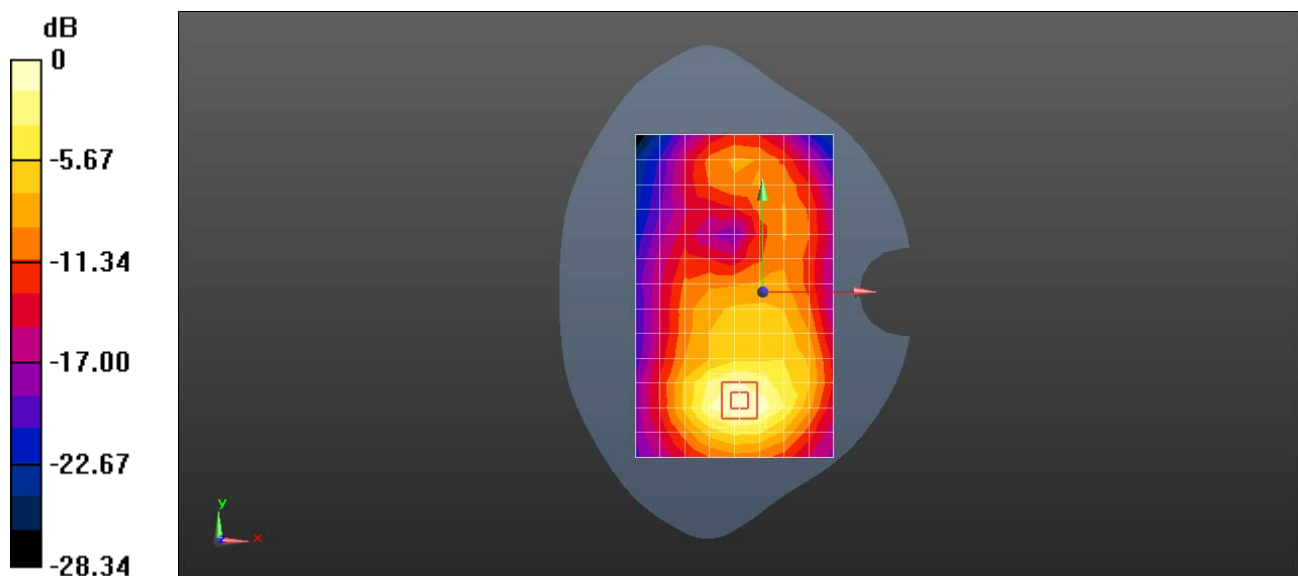
Configuration/Body/Zoom Scan (5x5x7)/Cube 0: Measurement grid: $dx=8$ mm, $dy=8$ mm, $dz=5$ mm

Reference Value = 8.406 V/m; Power Drift = 0.04 dB

Peak SAR (extrapolated) = 1.03 W/kg

SAR(1 g) = 0.701 W/kg; SAR(10 g) = 0.436 W/kg

Maximum value of SAR (measured) = 0.827 W/kg



0 dB = 0.731 W/kg = -1.36 dBW/kg

Test Laboratory: HUAWEI SAR/HAC Lab

ANE-LX2J UMTS Band 2 9400CH Bottom Side 10mm-Main Antenna

DUT: ANE-LX2J; Type: Smart Phone; Serial: SAR2

Communication System: UID 0, HW-UMTS-FDD(WCDMA) (0); Frequency: 1880 MHz; Duty Cycle: 1:1

Medium parameters used: $f = 1880$ MHz; $\sigma = 1.528$ S/m; $\epsilon_r = 52.897$; $\rho = 1000$ kg/m³

Phantom section: Flat Section

DASY Configuration:

- ε Probe: ES3DV3 - SN3168; ConvF(4.98, 4.98, 4.98); Calibrated: 2017-9-28;
- ε Sensor-Surface: 3mm (Mechanical Surface Detection), $z = 2.0, 32.0$
- ε Electronics: DAE4 Sn852; Calibrated: 2017-4-27
- ε Phantom: SAM4; Type: SAM; Serial: TP-1620
- ε DASY52 52.8.8(1222); SEMCAD X 14.6.10(7331)

Configuration/Body/Area Scan (5x9x1): Measurement grid: $dx=15$ mm, $dy=15$ mm

Maximum value of SAR (measured) = 0.849 W/kg

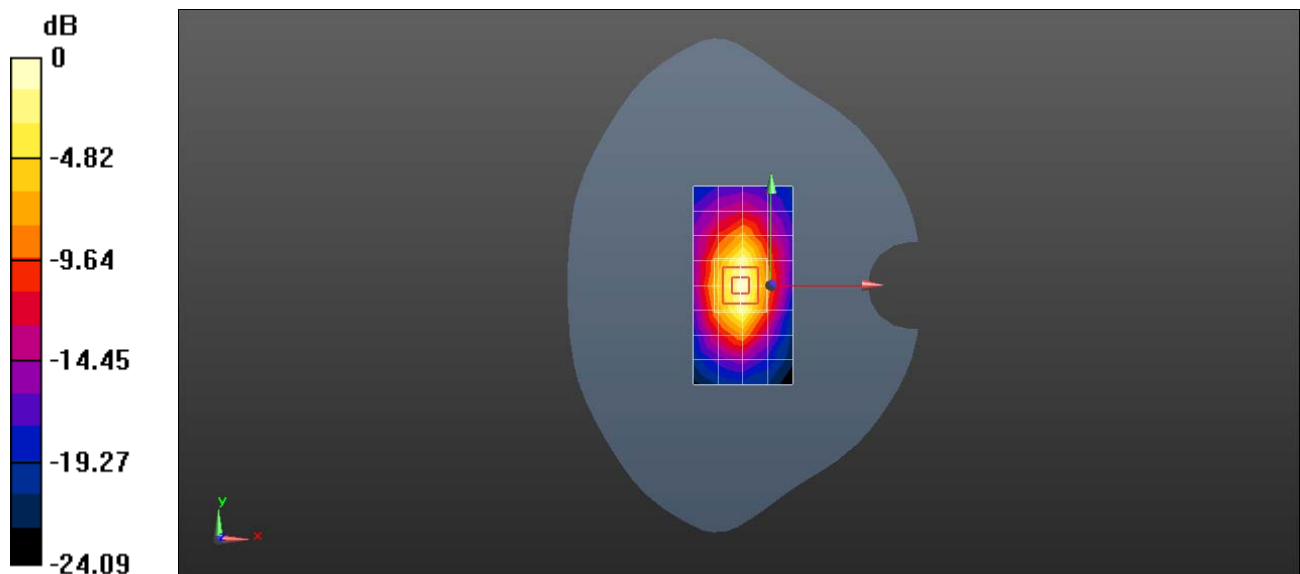
Configuration/Body/Zoom Scan (5x5x7)/Cube 0: Measurement grid: $dx=8$ mm, $dy=8$ mm, $dz=5$ mm

Reference Value = 24.45 V/m; Power Drift = 0.07 dB

Peak SAR (extrapolated) = 1.12 W/kg

SAR(1 g) = 0.712 W/kg; SAR(10 g) = 0.398 W/kg

Maximum value of SAR (measured) = 0.870 W/kg



0 dB = 0.849 W/kg = -0.71 dBW/kg

Test Laboratory: HUAWEI SAR/HAC Lab

ANE-LX2J UMTS Band 5 4182CH Right Touch with Battery3-Main Antenna

DUT: ANE-LX2J; Type: Smart Phone; Serial: SAR2

Communication System: UID 0, HW-UMTS-FDD(WCDMA) (0); Frequency: 836.4 MHz; Duty Cycle: 1:1

Medium parameters used (interpolated): $f = 836.4$ MHz; $\sigma = 0.927$ S/m; $\epsilon_r = 42.363$; $\rho = 1000$ kg/m³

Phantom section: Right Section

DASY Configuration:

- ε Probe: ES3DV3 - SN3168; ConvF(6.55, 6.55, 6.55); Calibrated: 2017-9-28;
- ε Sensor-Surface: 3mm (Mechanical Surface Detection), $z = 2.0, 32.0$
- ε Electronics: DAE4 Sn852; Calibrated: 2017-4-27
- ε Phantom: SAM3; Type: SAM; Serial: TP-1597
- ε DASY52 52.8.8(1222); SEMCAD X 14.6.10(7331)

Configuration/Head/Area Scan (9x14x1): Measurement grid: dx=15mm, dy=15mm

[Info: Interpolated medium parameters used for SAR evaluation.](#)

Maximum value of SAR (measured) = 0.166 W/kg

Configuration/Head/Zoom Scan (5x5x7)/Cube 0: Measurement grid: dx=8mm, dy=8mm, dz=5mm

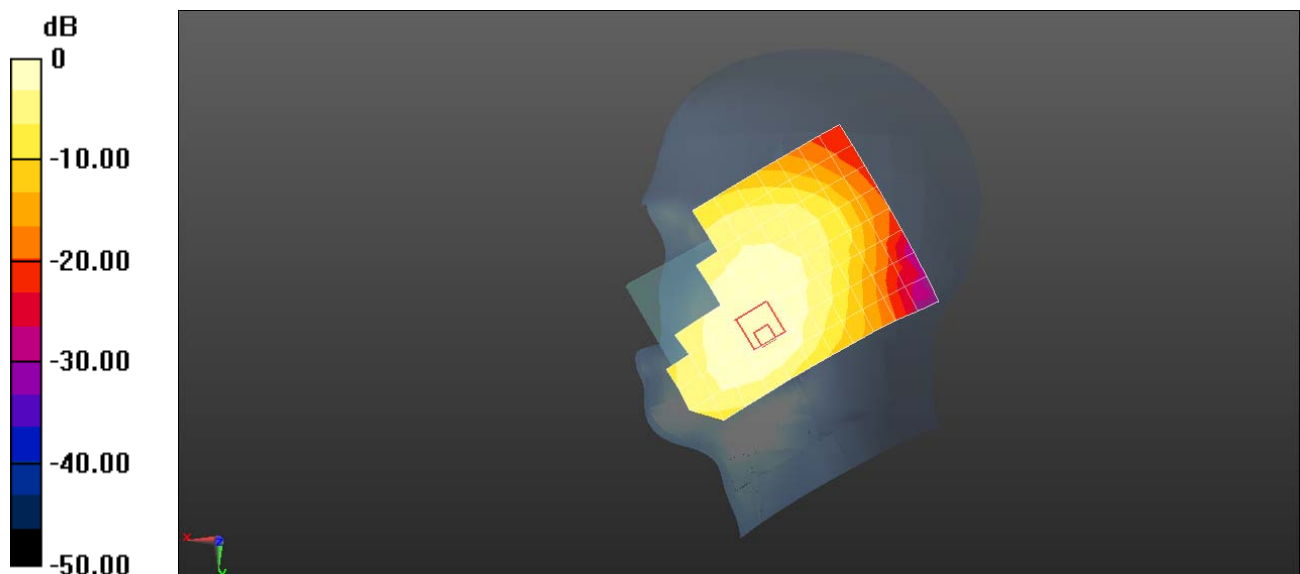
Reference Value = 5.926 V/m; Power Drift = 0.07 dB

Peak SAR (extrapolated) = 0.206 W/kg

SAR(1 g) = 0.153 W/kg; SAR(10 g) = 0.118 W/kg

[Info: Interpolated medium parameters used for SAR evaluation.](#)

Maximum value of SAR (measured) = 0.169 W/kg



0 dB = 0.166 W/kg = -7.80 dBW/kg

Test Laboratory: HUAWEI SAR/HAC Lab

ANE-LX2J UMTS Band 5 4182CH Back Side 15mm-Main Antenna

DUT: ANE-LX2J; Type: Smart Phone; Serial: SAR2

Communication System: UID 0, HW-UMTS-FDD(WCDMA) (0); Frequency: 836.4 MHz; Duty Cycle: 1:1

Medium parameters used (interpolated): $f = 836.4$ MHz; $\sigma = 0.943$ S/m; $\epsilon_r = 53.951$; $\rho = 1000$ kg/m³

Phantom section: Flat Section

DASY Configuration:

- ε Probe: EX3DV4 - SN3168; ConvF(6.27, 6.27, 6.27); Calibrated: 2017-9-28;
- ε Sensor-Surface: 1.4mm (Mechanical Surface Detection), $z = 1.0, 31.0$
- ε Electronics: DAE4 Sn852; Calibrated: 2017-4-27
- ε Phantom: SAM4; Type: SAM; Serial: TP-1620
- ε DASY52 52.8.8(1222); SEMCAD X 14.6.10(7331)

Configuration/Body/Area Scan (9x13x1): Measurement grid: $dx=15$ mm, $dy=15$ mm

[Info: Interpolated medium parameters used for SAR evaluation.](#)

Maximum value of SAR (measured) = 0.285 W/kg

Configuration/Body/Zoom Scan (5x5x7)/Cube 0: Measurement grid: $dx=8$ mm, $dy=8$ mm, $dz=5$ mm

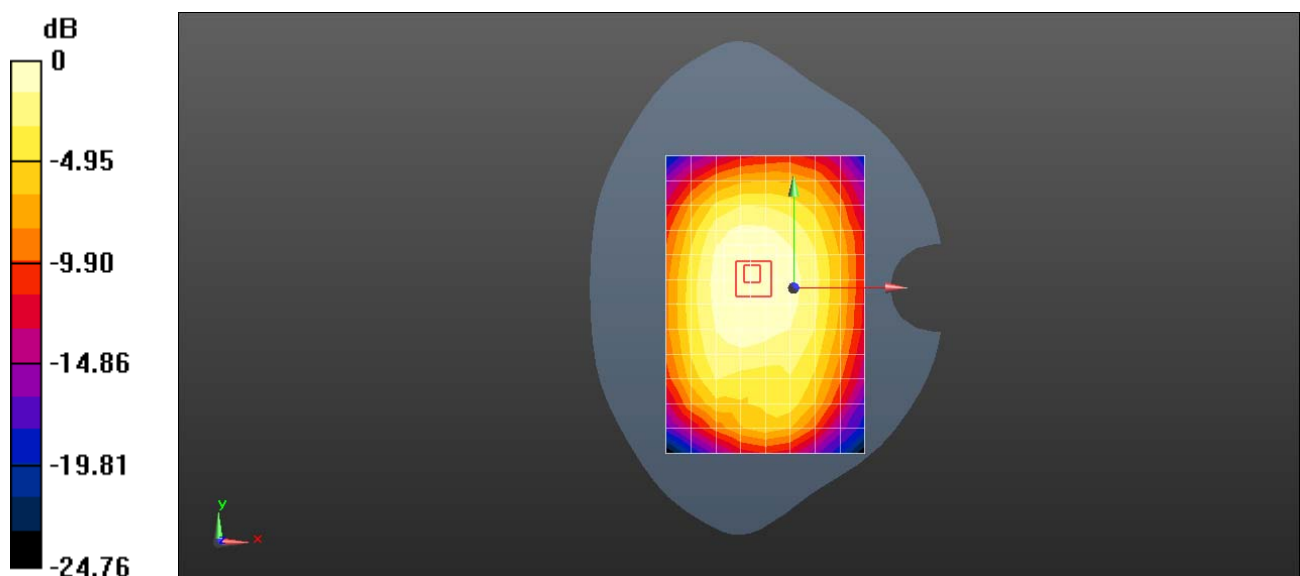
Reference Value = 16.46 V/m; Power Drift = 0.06 dB

Peak SAR (extrapolated) = 0.311 W/kg

SAR(1 g) = 0.252 W/kg; SAR(10 g) = 0.201 W/kg

[Info: Interpolated medium parameters used for SAR evaluation.](#)

Maximum value of SAR (measured) = 0.292 W/kg



0 dB = 0.285 W/kg = -5.45 dBW/kg

Test Laboratory: HUAWEI SAR/HAC Lab

ANE-LX2J UMTS Band 5 4182CH Right Side 10mm-Main Antenna

DUT: ANE-LX2J; Type: Smart Phone; Serial: SAR2

Communication System: UID 0, HW-UMTS-FDD(WCDMA) (0); Frequency: 836.4 MHz; Duty Cycle: 1:1

Medium parameters used (interpolated): $f = 836.4$ MHz; $\sigma = 0.943$ S/m; $\epsilon_r = 53.951$; $\rho = 1000$ kg/m³

Phantom section: Flat Section

DASY Configuration:

- ε Probe: ES3DV3 - SN3168; ConvF(6.27, 6.27, 6.27); Calibrated: 2017-9-28;
- ε Sensor-Surface: 3mm (Mechanical Surface Detection), $z = 2.0, 32.0$
- ε Electronics: DAE4 Sn852; Calibrated: 2017-4-27
- ε Phantom: SAM4; Type: SAM; Serial: TP-1620
- ε DASY52 52.8.8(1222); SEMCAD X 14.6.10(7331)

Configuration/Body/Area Scan (5x13x1): Measurement grid: $dx=15$ mm, $dy=15$ mm

[Info: Interpolated medium parameters used for SAR evaluation.](#)

Maximum value of SAR (measured) = 0.356 W/kg

Configuration/Body/Zoom Scan (5x5x7)/Cube 0: Measurement grid: $dx=8$ mm, $dy=8$ mm, $dz=5$ mm

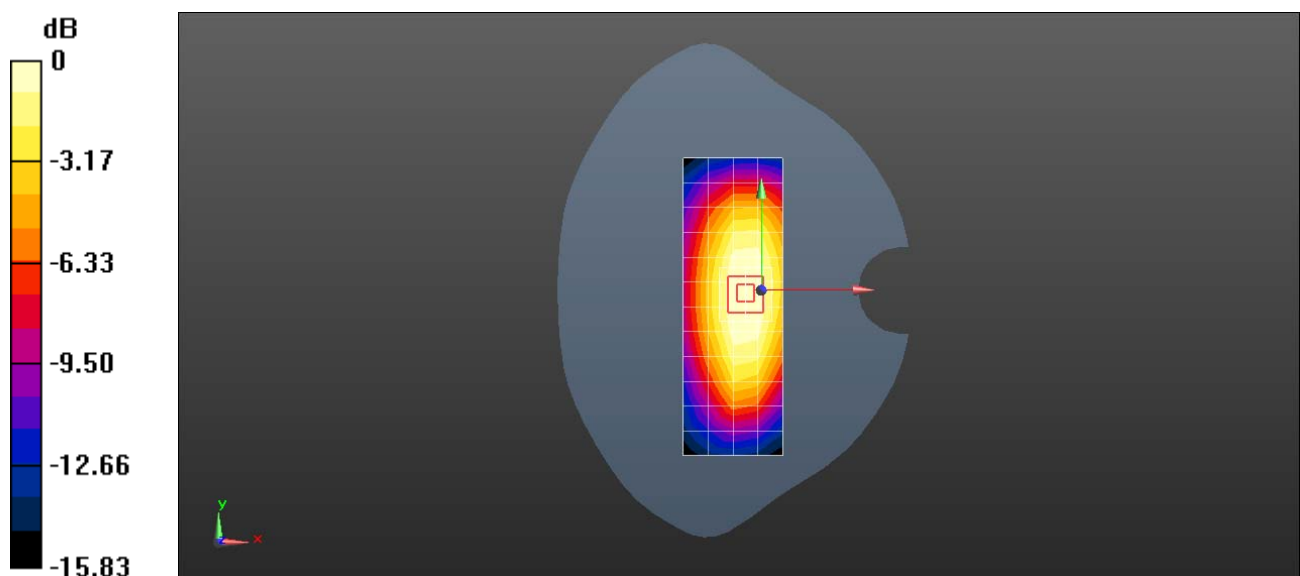
Reference Value = 20.23 V/m; Power Drift = -0.10 dB

Peak SAR (extrapolated) = 0.492 W/kg

SAR(1 g) = 0.361 W/kg; SAR(10 g) = 0.259 W/kg

[Info: Interpolated medium parameters used for SAR evaluation.](#)

Maximum value of SAR (measured) = 0.409 W/kg



0 dB = 0.356 W/kg = -4.49 dBW/kg

Test Laboratory: HUAWEI SAR/HAC Lab

ANE-LX2J LTE Band 5 10M QPSK 1RB 25 Offset 20600CH Right Touch -Main Antenna

DUT: ANE-LX2J; Type: Smart Phone; Serial: SAR1

Communication System: UID 0, LTE-FDD (SC-FDMA, 10MHz, QPSK/16-QAM) (0); Frequency: 844 MHz; Duty Cycle: 1:1

Medium parameters used: $f = 844$ MHz; $\sigma = 0.882$ S/m; $\epsilon_r = 42.185$; $\rho = 1000$ kg/m³

Phantom section: Right Section

DASY Configuration:

- ε Probe: ES3DV3 - SN3168; ConvF(6.55, 6.55, 6.55); Calibrated: 2017-9-28;
- ε Sensor-Surface: 3mm (Mechanical Surface Detection), $z = 2.0, 32.0$
- ε Electronics: DAE4 Sn1236; Calibrated: 2017-7-21
- ε Phantom: SAM1; Type: SAM; Serial: TP-1475
- ε DASY52 52.8.8(1222); SEMCAD X 14.6.10(7331)

Configuration/Head/Area Scan (9x13x1): Measurement grid: $dx=15$ mm, $dy=15$ mm
Maximum value of SAR (measured) = 0.225 W/kg

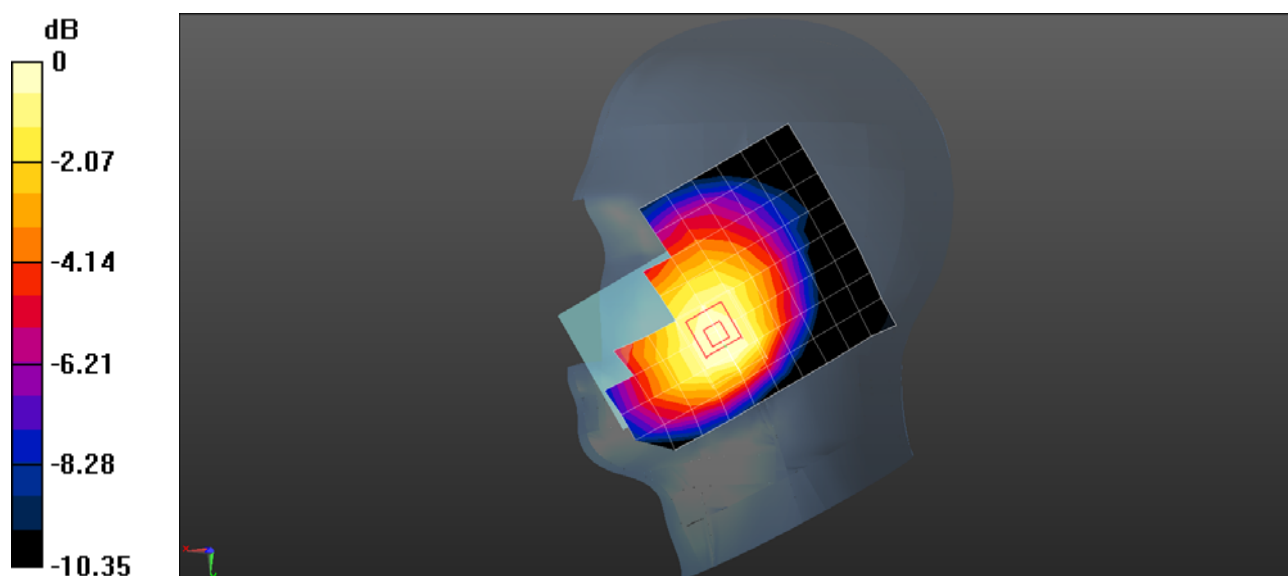
Configuration/Head/Zoom Scan (6x5x7)/Cube 0: Measurement grid: $dx=8$ mm, $dy=8$ mm, $dz=5$ mm

Reference Value = 5.571 V/m; Power Drift = -0.07 dB

Peak SAR (extrapolated) = 0.246 W/kg

SAR(1 g) = 0.188 W/kg; SAR(10 g) = 0.149 W/kg

Maximum value of SAR (measured) = 0.219 W/kg



0 dB = 0.219 W/kg = -6.59 dBW/kg

Test Laboratory: HUAWEI SAR/HAC Lab

ANE-LX2J LTE Band 5 QPSK 1RB 25 offset 20600CH Back Side 15mm with Battery2-Main Antenna

DUT: ANE-LX2J; Type: Smart Phone; Serial: SAR5

Communication System: UID 0, LTE-FDD (SC-FDMA, 10MHz, QPSK/16-QAM) (0); Frequency: 844 MHz; Duty Cycle: 1:1

Medium parameters used: $f = 844 \text{ MHz}$; $\sigma = 0.976 \text{ S/m}$; $\epsilon_r = 55.077$; $\rho = 1000 \text{ kg/m}^3$

Phantom section: Flat Section

DASY Configuration:

- Probe: EX3DV4 - SN7489; ConvF(10.8, 10.8, 10.8); Calibrated: 2018-1-9;
- Sensor-Surface: 1.4mm (Mechanical Surface Detection), $z = 1.0, 31.0$
- Electronics: DAE4 Sn1531; Calibrated: 2018-1-3
- Phantom: SAM8; Type: QD 000 P41 AA; Serial: TP-1940
- DASY52 52.8.8(1222); SEMCAD X 14.6.10(7373)

Configuration/Body/Area Scan (9x14x1): Measurement grid: $dx=15\text{mm}$, $dy=15\text{mm}$

Maximum value of SAR (measured) = 0.322 W/kg

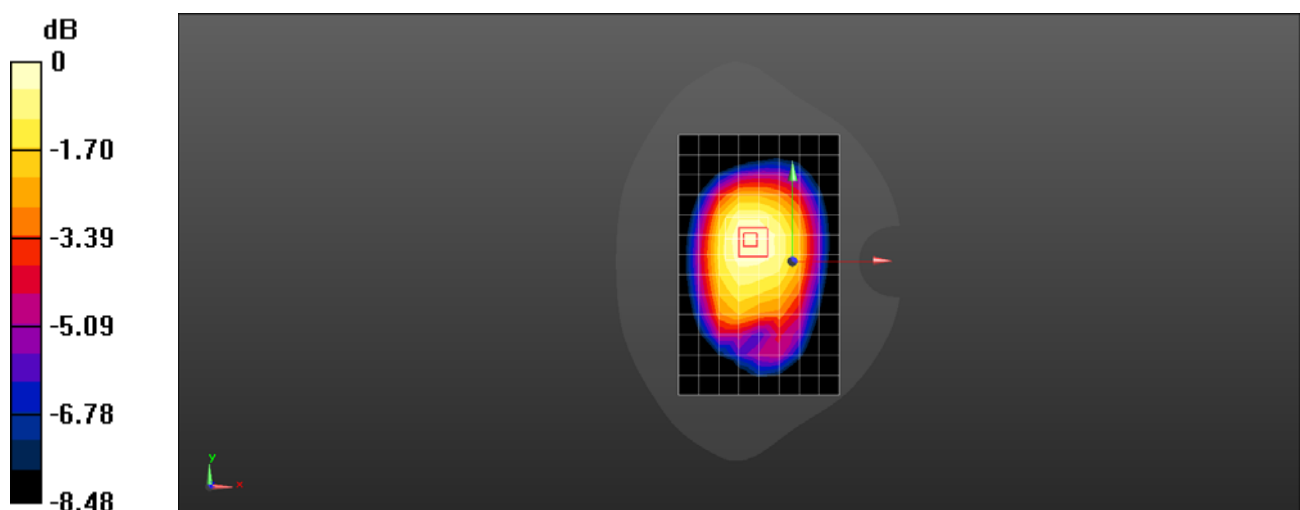
Configuration/Body/Zoom Scan (5x5x7)/Cube 0: Measurement grid: $dx=8\text{mm}$, $dy=8\text{mm}$, $dz=5\text{mm}$

Reference Value = 16.18 V/m; Power Drift = 0.05 dB

Peak SAR (extrapolated) = 0.359 W/kg

SAR(1 g) = 0.274 W/kg; SAR(10 g) = 0.211 W/kg

Maximum value of SAR (measured) = 0.329 W/kg



0 dB = 0.329 W/kg = -4.83 dBW/kg

Test Laboratory: HUAWEI SAR/HAC Lab

ANE-LX2J LTE Band 5 QPSK 1RB 25 offset 20600CH Right Side 10mm-Main Antenna

DUT: ANE-LX2J; Type: Smart Phone; Serial: SAR5

Communication System: UID 0, LTE-FDD (SC-FDMA, 10MHz, QPSK/16-QAM) (0); Frequency: 844 MHz; Duty Cycle: 1:1

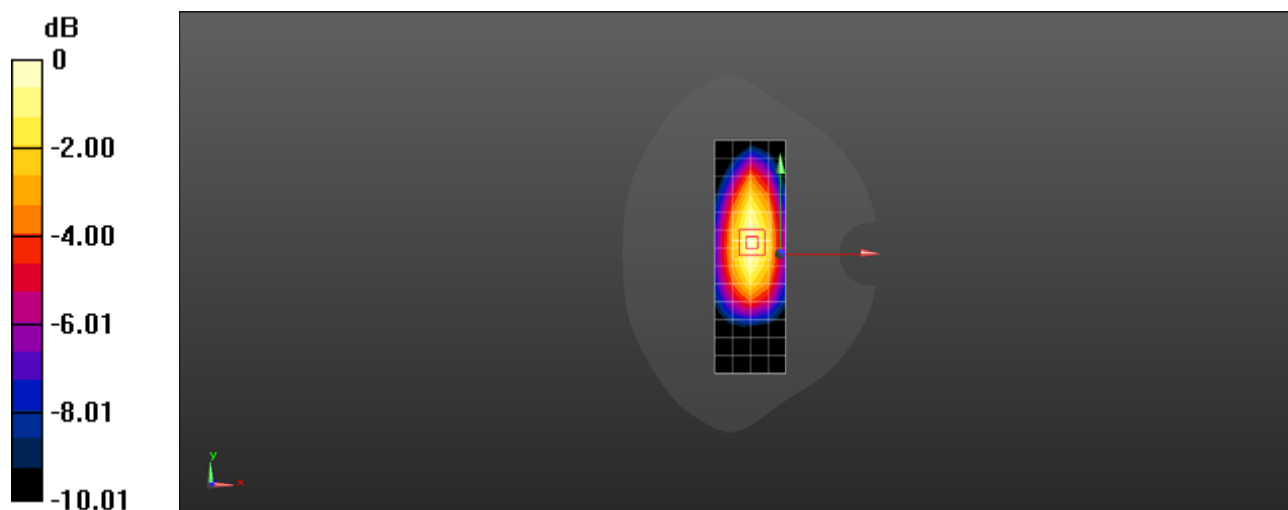
Medium parameters used: $f = 844$ MHz; $\sigma = 0.976$ S/m; $\epsilon_r = 55.077$; $\rho = 1000$ kg/m³
Phantom section: Flat Section

DASY Configuration:

- Probe: EX3DV4 - SN7489; ConvF(10.8, 10.8, 10.8); Calibrated: 2018-1-9;
- Sensor-Surface: 1.4mm (Mechanical Surface Detection), $z = -9.0, 31.0$
- Electronics: DAE4 Sn1531; Calibrated: 2018-1-3
- Phantom: SAM8; Type: QD 000 P41 AA; Serial: TP-1940
- DASY52 52.8.8(1222); SEMCAD X 14.6.10(7373)

Configuration/Body/Area Scan (5x14x1): Measurement grid: $dx=15$ mm, $dy=15$ mm
Maximum value of SAR (measured) = 0.345 W/kg

Configuration/Body/Zoom Scan (5x6x7)/Cube 0: Measurement grid: $dx=8$ mm, $dy=8$ mm, $dz=5$ mm
Reference Value = 16.68 V/m; Power Drift = 0.08 dB
Peak SAR (extrapolated) = 0.404 W/kg
SAR(1 g) = 0.270 W/kg; SAR(10 g) = 0.185 W/kg
Maximum value of SAR (measured) = 0.357 W/kg



0 dB = 0.357 W/kg = -4.47 dBW/kg

Test Laboratory: HUAWEI SAR/HAC Lab

ANE-LX2J LTE Band 7 20M QPSK 1RB 99 Offset 21100CH Left Touch-Main Antenna

DUT: ANE-LX2J; Type: Smart Phone; Serial: SAR1

Communication System: UID 0, LTE-FDD (SC-FDMA, 20MHz, QPSK/16-QAM) (0); Frequency: 2535 MHz; Duty Cycle: 1:1

Medium parameters used: $f = 2535$ MHz; $\sigma = 1.887$ S/m; $\epsilon_r = 40.175$; $\rho = 1000$ kg/m³

Phantom section: Left Section

DASY Configuration:

- ε Probe: EX3DV4 - SN3736; ConvF(7.01, 7.01, 7.01); Calibrated: 2017-4-27;
- ε Sensor-Surface: 1.4mm (Mechanical Surface Detection), $z = 1.0, 31.0$
- ε Electronics: DAE4 Sn1236; Calibrated: 2017-7-21
- ε Phantom: SAM1; Type: SAM; Serial: TP-1475
- ε DASY52 52.8.8(1222); SEMCAD X 14.6.10(7331)

Configuration/Head/Area Scan (11x16x1): Measurement grid: $dx=12$ mm, $dy=12$ mm
Maximum value of SAR (measured) = 0.180 W/kg

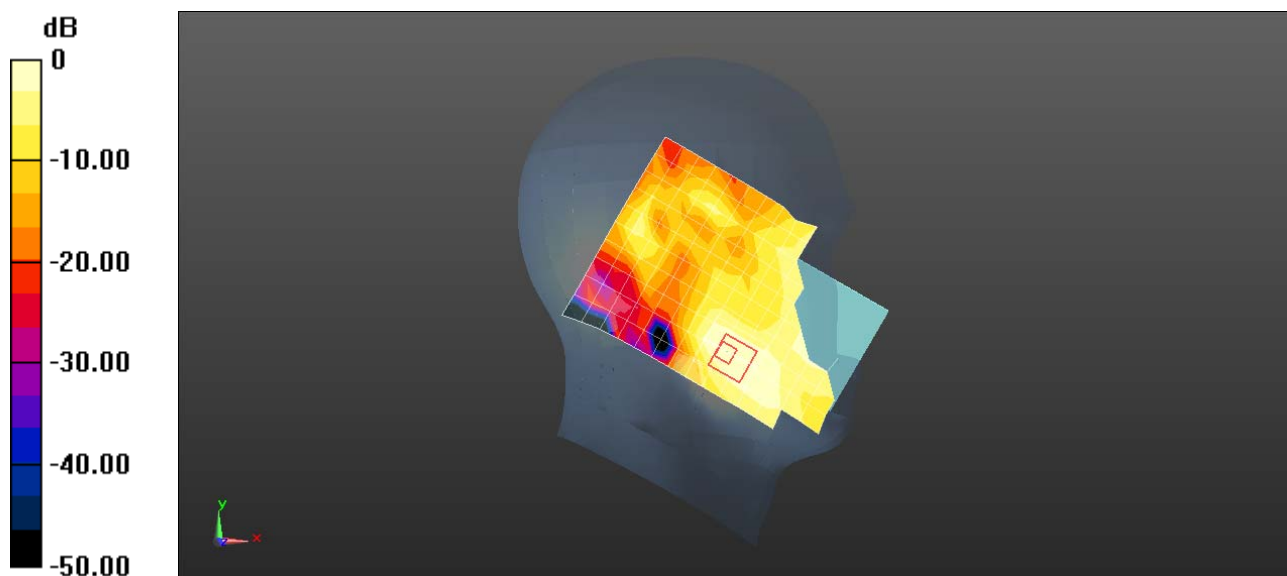
Configuration/Head/Zoom Scan (7x8x7)/Cube 0: Measurement grid: $dx=5$ mm, $dy=5$ mm, $dz=5$ mm

Reference Value = 2.760 V/m; Power Drift = 0.19 dB

Peak SAR (extrapolated) = 0.217 W/kg

SAR(1 g) = 0.112 W/kg; SAR(10 g) = 0.061 W/kg

Maximum value of SAR (measured) = 0.177 W/kg



0 dB = 0.180 W/kg = -7.45 dBW/kg

Test Laboratory: HUAWEI SAR/HAC Lab

ANE-LX2J LTE Band 7 20M QPSK 1RB 99 Offset 21100CH Back Side 15mm with Battery2-Main Antenna

DUT: ANE-LX2J; Type: Smart Phone; Serial: SAR1

Communication System: UID 0, LTE-FDD (SC-FDMA, 20MHz, QPSK/16-QAM) (0); Frequency: 2535 MHz; Duty Cycle: 1:1

Medium parameters used: $f = 2535$ MHz; $\sigma = 2.077$ S/m; $\epsilon_r = 50.583$; $\rho = 1000$ kg/m³

Phantom section: Flat Section

DASY Configuration:

- ε Probe: EX3DV4 - SN3736; ConvF(6.96, 6.96, 6.96); Calibrated: 2017-4-27;
- ε Sensor-Surface: 1.4mm (Mechanical Surface Detection), z = 1.0, 31.0
- ε Electronics: DAE4 Sn1236; Calibrated: 2017-7-21
- ε Phantom: SAM2; Type: SAM; Serial: TP:1474
- ε DASY52 52.8.8(1222); SEMCAD X 14.6.10(7331)

Configuration/Body/Area Scan (10x16x1): Measurement grid: dx=12mm, dy=12mm
Maximum value of SAR (measured) = 0.645 W/kg

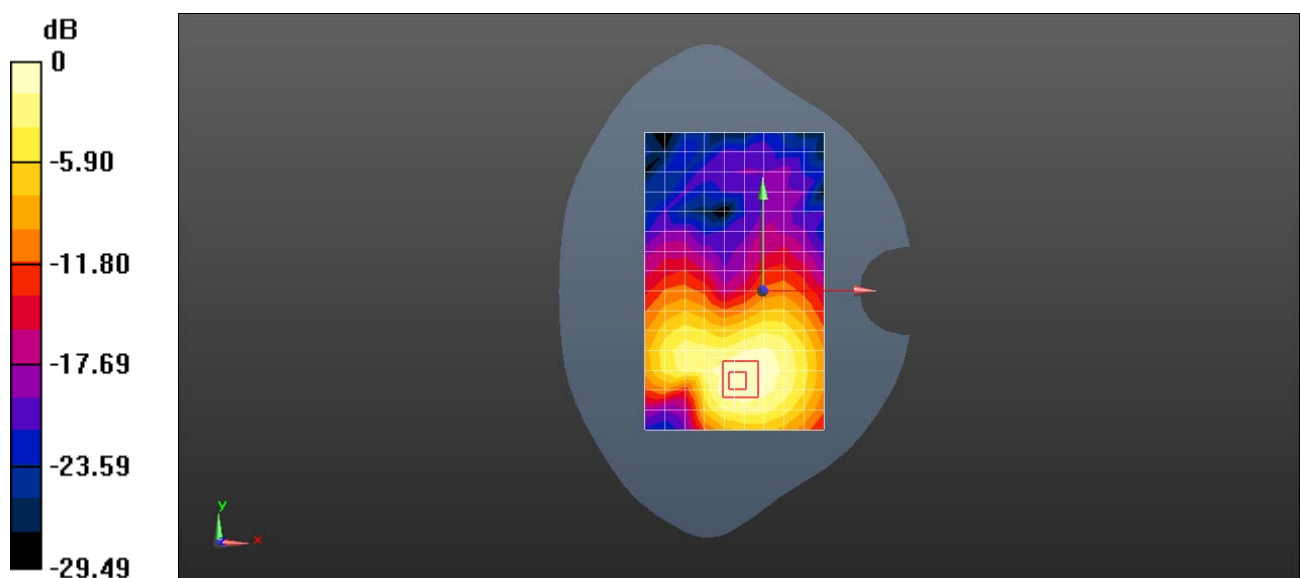
Configuration/Body/Zoom Scan (7x7x7)/Cube 0: Measurement grid: dx=5mm, dy=5mm, dz=5mm

Reference Value = 2.579 V/m; Power Drift = -0.14 dB

Peak SAR (extrapolated) = 0.818 W/kg

SAR(1 g) = 0.477 W/kg; SAR(10 g) = 0.282 W/kg

Maximum value of SAR (measured) = 0.688 W/kg



0 dB = 0.645 W/kg = -1.90 dBW/kg

Test Laboratory: HUAWEI SAR/HAC Lab

ANE-LX2J LTE Band 7 20M QPSK 50%RB 0 Offset 20850CH Front Side 9mm- Main Antenna

DUT: ANE-LX2J; Type: Smart Phone; Serial: SAR1

Communication System: UID 0, LTE-FDD (SC-FDMA, 20MHz, QPSK/16-QAM) (0); Frequency: 2510 MHz; Duty Cycle: 1:1

Medium parameters used: $f = 2510$ MHz; $\sigma = 2.047$ S/m; $\epsilon_r = 51.223$; $\rho = 1000$ kg/m³

Phantom section: Flat Section

DASY Configuration:

- ε Probe: EX3DV4 - SN7489; ConvF(7.91, 7.91, 7.91); Calibrated: 2018-1-9;
- ε Sensor-Surface: 1.4mm (Mechanical Surface Detection), $z = -9.0, 31.0$
- ε Electronics: DAE4 Sn905; Calibrated: 2017-6-20
- ε Phantom: SAM2; Type: SAM; Serial: TP:1474
- ε DASY52 52.8.8(1222); SEMCAD X 14.6.10(7331)

Configuration/Body/Area Scan (10x16x1): Measurement grid: $dx=12$ mm, $dy=12$ mm
Maximum value of SAR (measured) = 0.727 W/kg

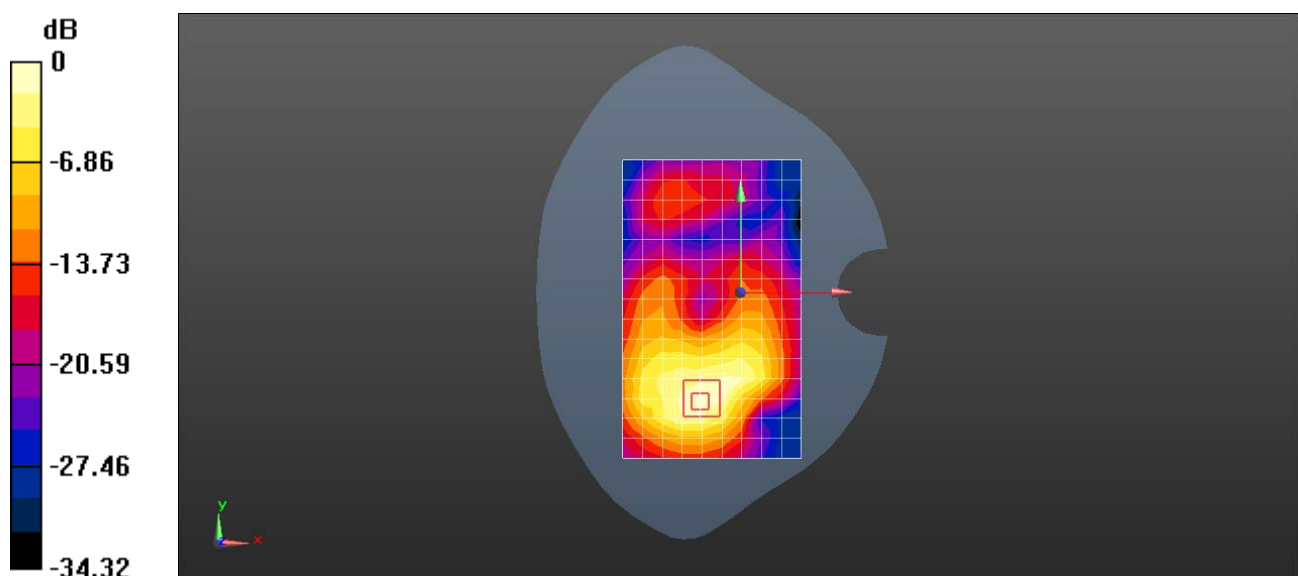
Configuration/Body/Zoom Scan (7x7x7)/Cube 0: Measurement grid: $dx=5$ mm, $dy=5$ mm, $dz=5$ mm

Reference Value = 2.071 V/m; Power Drift = -0.12 dB

Peak SAR (extrapolated) = 0.867 W/kg

SAR(1 g) = 0.500 W/kg; SAR(10 g) = 0.276 W/kg

Maximum value of SAR (measured) = 0.732 W/kg



0 dB = 0.727 W/kg = -1.38 dBW/kg

Test Laboratory: HUAWEI SAR/HAC Lab

ANE-LX2J LTE Band 26 15M QPSK 1RB 38 Offset 26775CH Right Touch-Main Antenna

DUT: ANE-LX2J; Type: Smart Phone; Serial: SAR1

Communication System: UID 0, LTE-FDD (SC-FDMA, 15MHz, QPSK/16-QAM) (0); Frequency: 822.5 MHz; Duty Cycle: 1:1

Medium parameters used (interpolated): $f = 822.5$ MHz; $\sigma = 0.864$ S/m; $\epsilon_r = 42.894$; $\rho = 1000$ kg/m³

Phantom section: Right Section

DASY Configuration:

- ε Probe: ES3DV3 - SN3168; ConvF(6.55, 6.55, 6.55); Calibrated: 2017-9-28;
- ε Sensor-Surface: 3mm (Mechanical Surface Detection), $z = 2.0, 32.0$
- ε Electronics: DAE4 Sn1236; Calibrated: 2017-7-21
- ε Phantom: SAM1; Type: SAM; Serial: TP-1475
- ε DASY52 52.8.8(1222); SEMCAD X 14.6.10(7331)

Configuration/Head/Area Scan (9x13x1): Measurement grid: dx=15mm, dy=15mm

[Info: Interpolated medium parameters used for SAR evaluation.](#)

Maximum value of SAR (measured) = 0.238 W/kg

Configuration/Head/Zoom Scan (5x5x7)/Cube 0: Measurement grid: dx=8mm, dy=8mm, dz=5mm

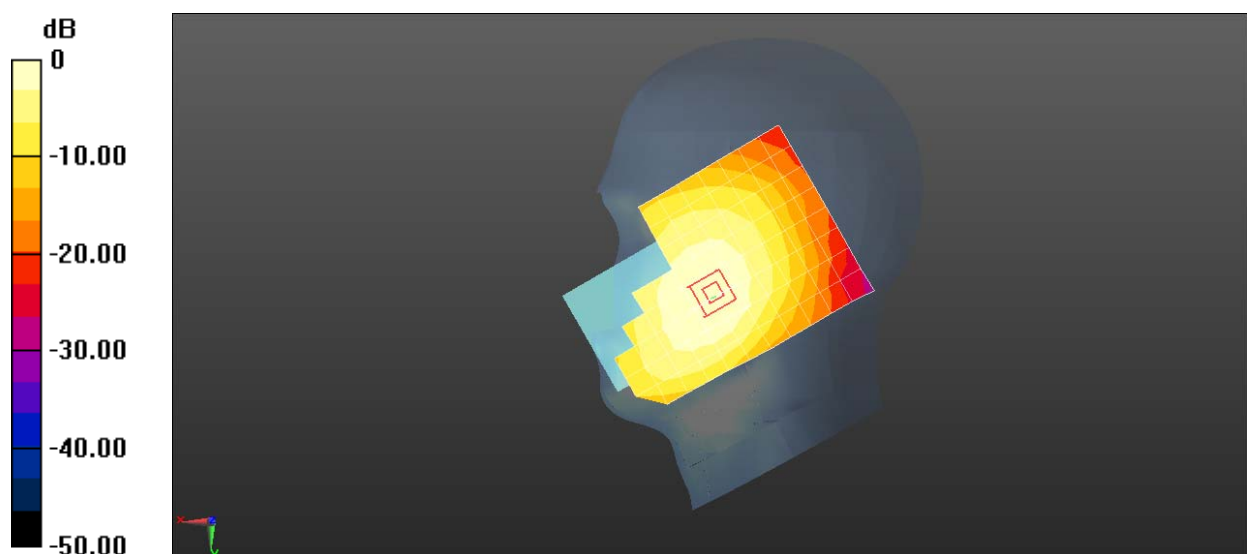
Reference Value = 6.149 V/m; Power Drift = -0.19 dB

Peak SAR (extrapolated) = 0.267 W/kg

SAR(1 g) = 0.212 W/kg; SAR(10 g) = 0.163 W/kg

[Info: Interpolated medium parameters used for SAR evaluation.](#)

Maximum value of SAR (measured) = 0.230 W/kg



0 dB = 0.238 W/kg = -6.23 dBW/kg

Test Laboratory: HUAWEI SAR/HAC Lab

ANE-LX2J LTE Band 26 15M QPSK 1RB 38 Offset 26775CH Back Side 15mm with Battery3-Main Antenna

DUT: ANE-LX2J; Type: Smart Phone; Serial: SAR1

Communication System: UID 0, LTE-FDD (SC-FDMA, 15MHz, QPSK/16-QAM) (0); Frequency: 822.5 MHz; Duty Cycle: 1:1

Medium parameters used (interpolated): $f = 822.5$ MHz; $\sigma = 0.978$ S/m; $\epsilon_r = 54.361$; $\rho = 1000$ kg/m³

Phantom section: Flat Section

DASY Configuration:

- ε Probe: EX3DV4 - SN3736; ConvF(9.36, 9.36, 9.36); Calibrated: 2017-4-27;
- ε Sensor-Surface: 1.4mm (Mechanical Surface Detection), $z = 1.0, 31.0$
- ε Electronics: DAE4 Sn1236; Calibrated: 2017-7-21
- ε Phantom: SAM2; Type: SAM; Serial: TP:1474
- ε DASY52 52.8.8(1222); SEMCAD X 14.6.10(7331)

Configuration/Body/Area Scan (9x13x1): Measurement grid: $dx=15$ mm, $dy=15$ mm

[Info: Interpolated medium parameters used for SAR evaluation.](#)

Maximum value of SAR (measured) = 0.277 W/kg

Configuration/Body/Zoom Scan (5x5x7)/Cube 0: Measurement grid: $dx=8$ mm, $dy=8$ mm, $dz=5$ mm

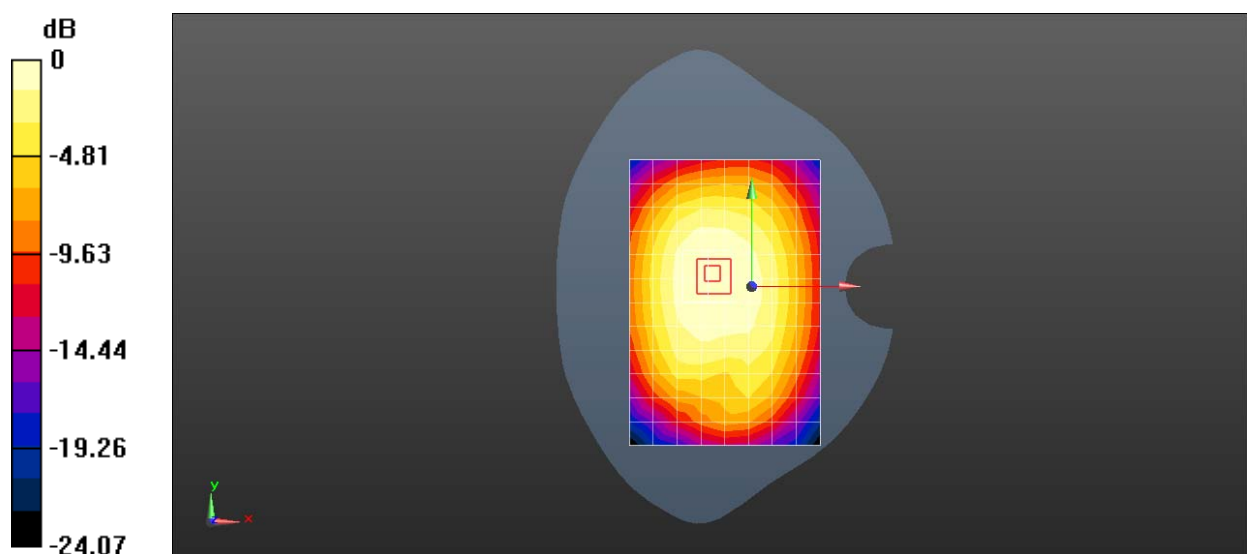
Reference Value = 16.97 V/m; Power Drift = -0.04 dB

Peak SAR (extrapolated) = 0.328 W/kg

SAR(1 g) = 0.260 W/kg; SAR(10 g) = 0.198 W/kg

[Info: Interpolated medium parameters used for SAR evaluation.](#)

Maximum value of SAR (measured) = 0.284 W/kg



0 dB = 0.277 W/kg = -5.58 dBW/kg

Test Laboratory: HUAWEI SAR/HAC Lab

ANE-LX2J LTE Band 26 15M QPSK 1RB 38 Offset 26775CH Right Side 10mm-Main Antenna

DUT: ANE-LX2J; Type: Smart Phone; Serial: SAR1

Communication System: UID 0, LTE-FDD (SC-FDMA, 15MHz, QPSK/16-QAM) (0); Frequency: 822.5 MHz; Duty Cycle: 1:1

Medium parameters used (interpolated): $f = 822.5$ MHz; $\sigma = 0.898$ S/m; $\epsilon_r = 42.583$; $\rho = 1000$ kg/m³

Phantom section: Flat Section

DASY Configuration:

- ε Probe: EX3DV4 - SN3736; ConvF(9.36, 9.36, 9.36); Calibrated: 2017-4-27;
- ε Sensor-Surface: 1.4mm (Mechanical Surface Detection), $z = 1.0, 31.0$
- ε Electronics: DAE4 Sn1236; Calibrated: 2017-7-21
- ε Phantom: SAM2; Type: SAM; Serial: TP:1474
- ε DASY52 52.8.8(1222); SEMCAD X 14.6.10(7331)

Configuration/Head/Area Scan (5x13x1): Measurement grid: $dx=15$ mm, $dy=15$ mm

[Info: Interpolated medium parameters used for SAR evaluation.](#)

Maximum value of SAR (measured) = 0.355 W/kg

Configuration/Head/Zoom Scan (5x5x7)/Cube 0: Measurement grid: $dx=8$ mm, $dy=8$ mm, $dz=5$ mm

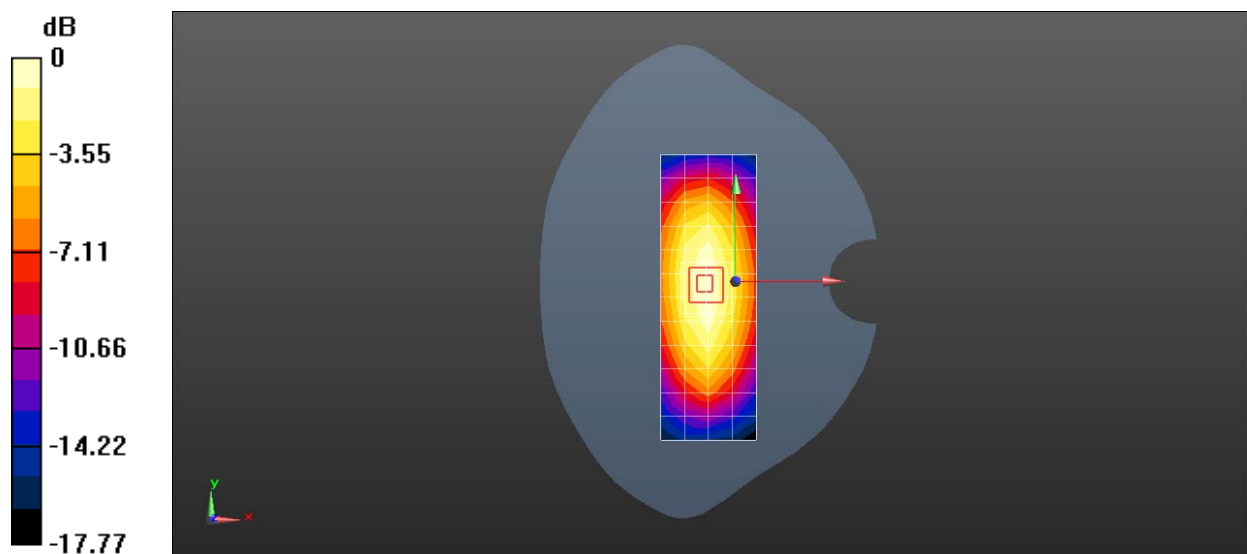
Reference Value = 21.12 V/m; Power Drift = -0.02 dB

Peak SAR (extrapolated) = 0.422 W/kg

SAR(1 g) = 0.272 W/kg; SAR(10 g) = 0.183 W/kg

[Info: Interpolated medium parameters used for SAR evaluation.](#)

Maximum value of SAR (measured) = 0.367 W/kg



0 dB = 0.355 W/kg = -4.50 dBW/kg

Test Laboratory: HUAWEI SAR/HAC Lab

ANE-LX2J LTE Band 41 QPSK 1RB 99 offset 41140CH Left touch-Main Antenna

DUT: ANE-LX2J; Type: Smart Phone; Serial: SAR5

Communication System: UID 0, LTE-TDD (SC-FDMA, 20MHz, QPSK/16-QAM) (0); Frequency: 2645 MHz; Duty Cycle: 1:1.57943

Medium parameters used: $f = 2645$ MHz; $\sigma = 2.001$ S/m; $\epsilon_r = 39.589$; $\rho = 1000$ kg/m³

Phantom section: Left Section

DASY Configuration:

- Probe: EX3DV4 - SN7489; ConvF(7.76, 7.76, 7.76); Calibrated: 2018-1-9;
- Sensor-Surface: 1.4mm (Mechanical Surface Detection), $z = 1.0, 31.0$
- Electronics: DAE4 Sn1531; Calibrated: 2018-1-3
- Phantom: SAM8; Type: QD 000 P41 AA; Serial: TP-1940
- DASY52 52.8.8(1222); SEMCAD X 14.6.10(7373)

Configuration/Body/Area Scan (11x17x1): Measurement grid: $dx=12$ mm, $dy=12$ mm

Maximum value of SAR (measured) = 0.0344 W/kg

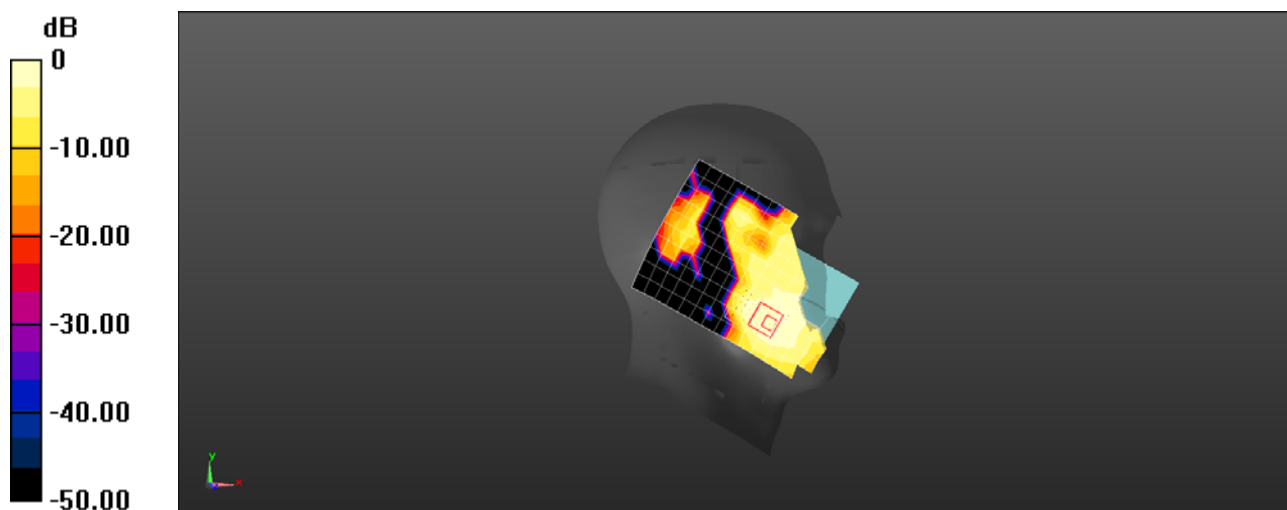
Configuration/Body/Zoom Scan (7x10x7)/Cube 0: Measurement grid: $dx=5$ mm, $dy=5$ mm, $dz=5$ mm

Reference Value = 1.229 V/m; Power Drift = 0.16 dB

Peak SAR (extrapolated) = 0.0490 W/kg

SAR(1 g) = 0.026 W/kg; SAR(10 g) = 0.015 W/kg

Maximum value of SAR (measured) = 0.0402 W/kg



0 dB = 0.0402 W/kg = -13.96 dBW/kg

Test Laboratory: HUAWEI SAR/HAC Lab

ANE-LX2J LTE Band 41 20M QPSK 1RB 99 Offset 41140CH Back Side 15mm- Main Antenna

DUT: ANE-LX2J; Type: Smart Phone; Serial: SAR1

Communication System: UID 0, LTE-TDD (SC-FDMA, 20MHz, QPSK/16-QAM) (0); Frequency: 2645 MHz; Duty Cycle: 1:1.57906

Medium parameters used: $f = 2645$ MHz; $\sigma = 2.157$ S/m; $\epsilon_r = 52.797$; $\rho = 1000$ kg/m³

Phantom section: Flat Section

DASY Configuration:

- ε Probe: EX3DV4 - SN3744; ConvF(7.12, 7.12, 7.12); Calibrated: 2017-7-24;
- ε Sensor-Surface: 1.4mm (Mechanical Surface Detection), z = 1.0, 31.0
- ε Electronics: DAE4 Sn1236; Calibrated: 2017-7-21
- ε Phantom: SAM2; Type: SAM; Serial: TP:1474
- ε DASY52 52.8.8(1222); SEMCAD X 14.6.10(7331)

Configuration/Body/Area Scan (9x15x1): Measurement grid: dx=12mm, dy=12mm

Maximum value of SAR (measured) = 0.270 W/kg

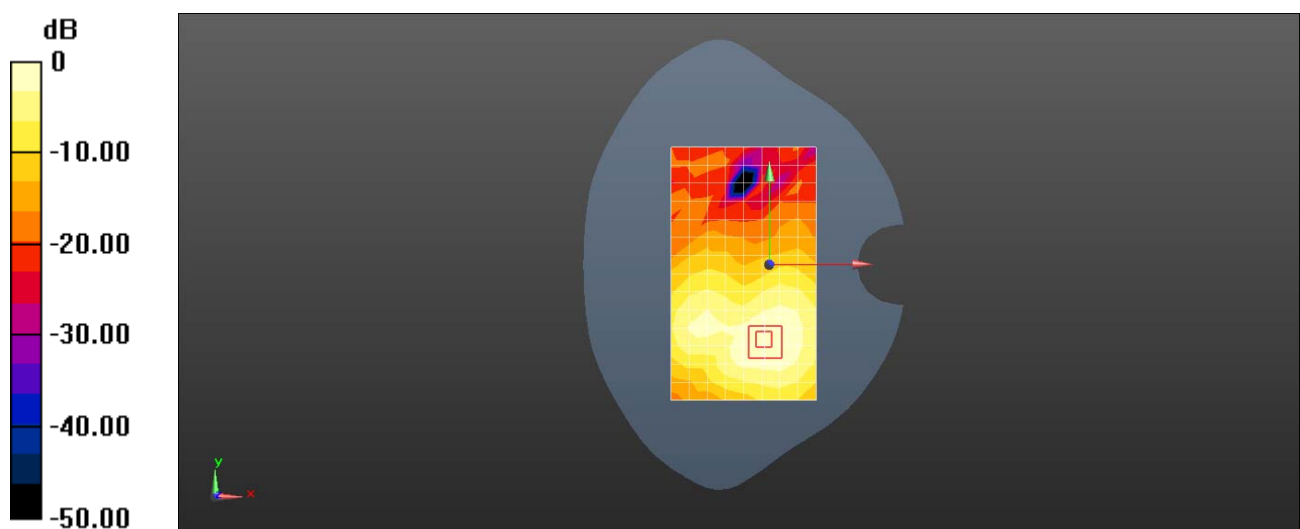
Configuration/Body/Zoom Scan (7x7x7)/Cube 0: Measurement grid: dx=5mm, dy=5mm, dz=5mm

Reference Value = 2.484 V/m; Power Drift = -0.19 dB

Peak SAR (extrapolated) = 0.334 W/kg

SAR(1 g) = 0.194 W/kg; SAR(10 g) = 0.115 W/kg

Maximum value of SAR (measured) = 0.283 W/kg



0 dB = 0.270 W/kg = -5.69 dBW/kg

Test Laboratory: HUAWEI SAR/HAC Lab

ANE-LX2J LTE Band 41 20M QPSK 50%RB 50 Offset 40540CH Bottom Side 10mm with Battery2-Main Antenna

DUT: ANE-LX2J; Type: Smart Phone; Serial: SAR1

Communication System: UID 0, LTE-TDD (SC-FDMA, 20MHz, QPSK/16-QAM) (0); Frequency: 2585 MHz; Duty Cycle: 1:1.57906

Medium parameters used: $f = 2585$ MHz; $\sigma = 2.083$ S/m; $\epsilon_r = 52.9$; $\rho = 1000$ kg/m³

Phantom section: Flat Section

DASY Configuration:

- ε Probe: EX3DV4 - SN3744; ConvF(7.12, 7.12, 7.12); Calibrated: 2017-7-24;
- ε Sensor-Surface: 1.4mm (Mechanical Surface Detection), z = 1.0, 31.0
- ε Electronics: DAE4 Sn1236; Calibrated: 2017-7-21
- ε Phantom: SAM2; Type: SAM; Serial: TP:1474
- ε DASY52 52.8.8(1222); SEMCAD X 14.6.10(7331)

Configuration/Body/Area Scan (6x11x1): Measurement grid: dx=12mm, dy=12mm

Maximum value of SAR (measured) = 0.659 W/kg

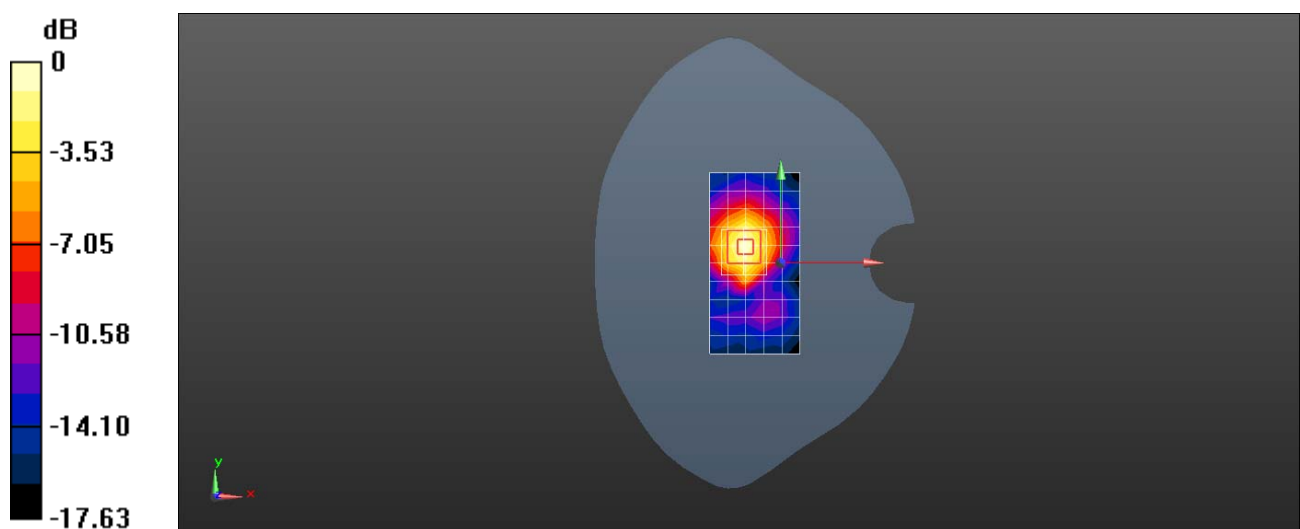
Configuration/Body/Zoom Scan (7x7x7)/Cube 0: Measurement grid: dx=5mm, dy=5mm, dz=5mm

Reference Value = 13.97 V/m; Power Drift = 0.10 dB

Peak SAR (extrapolated) = 0.803 W/kg

SAR(1 g) = 0.414 W/kg; SAR(10 g) = 0.203 W/kg

Maximum value of SAR (measured) = 0.657 W/kg



0 dB = 0.659 W/kg = -1.81 dBW/kg

Test Laboratory: HUAWEI SAR/HAC Lab

ANE-LX2J WiFi 2.4G 802.11b 1CH Left touch

DUT: ANE-LX2J; Type: Smart Phone; Serial: SAR5

Communication System: UID 0, WiFi(802.11a/b/g/n) (0); Frequency: 2412 MHz;Duty Cycle: 1:1
Medium parameters used: $f = 2412$ MHz; $\sigma = 1.796$ S/m; $\epsilon_r = 38.523$; $\rho = 1000$ kg/m³

Phantom section: Left Section

DASY Configuration:

- Probe: EX3DV4 - SN7489; ConvF(8.04, 8.04, 8.04); Calibrated: 2018-1-9;
- Sensor-Surface: 1.4mm (Mechanical Surface Detection), $z = 1.0, 31.0$
- Electronics: DAE4 Sn1531; Calibrated: 2018-1-3
- Phantom: SAM8; Type: QD 000 P41 AA; Serial: TP-1940
- DASY52 52.8.8(1222); SEMCAD X 14.6.10(7373)

Configuration/Head/Area Scan (10x17x1): Measurement grid: $dx=12$ mm, $dy=12$ mm
Maximum value of SAR (measured) = 0.326 W/kg

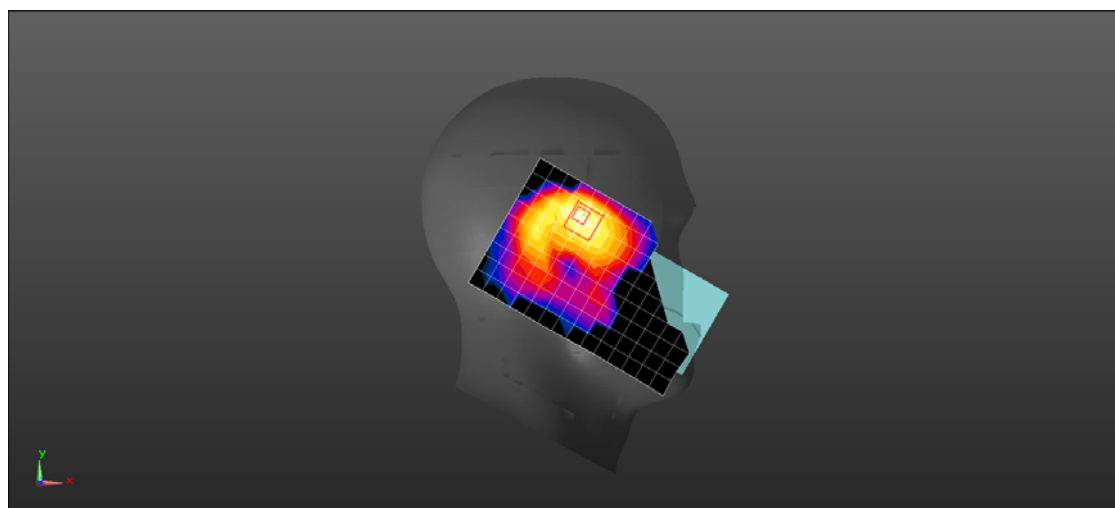
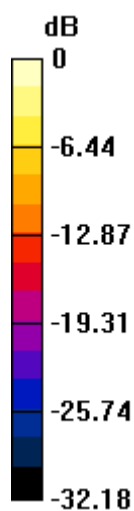
Configuration/Head/Zoom Scan (7x7x7)/Cube 0: Measurement grid: $dx=5$ mm, $dy=5$ mm, $dz=5$ mm

Reference Value = 5.676 V/m; Power Drift = 0.19 dB

Peak SAR (extrapolated) = 0.482 W/kg

SAR(1 g) = 0.194 W/kg; SAR(10 g) = 0.084 W/kg

Maximum value of SAR (measured) = 0.341 W/kg



0 dB = 0.341 W/kg = -4.67 dBW/kg

Test Laboratory: HUAWEI SAR/HAC Lab

ANE-LX2J WiFi 2.4G 802.11b 6CH Back Side 15mm with Battery2

DUT: ANE-LX2J; Type: Smart Phone; Serial: SAR5

Communication System: UID 0, WiFi(802.11a/b/g/n) (0); Frequency: 2437 MHz;Duty Cycle: 1:1
Medium parameters used: $f = 2437$ MHz; $\sigma = 2.014$ S/m; $\epsilon_r = 52.781$; $\rho = 1000$ kg/m³

Phantom section: Flat Section

DASY Configuration:

- Probe: EX3DV4 - SN7489; ConvF(8.24, 8.24, 8.24); Calibrated: 2018-1-9;
- Sensor-Surface: 1.4mm (Mechanical Surface Detection), $z = 1.0, 31.0$
- Electronics: DAE4 Sn1531; Calibrated: 2018-1-3
- Phantom: SAM8; Type: QD 000 P41 AA; Serial: TP-1940
- DASY52 52.8.8(1222); SEMCAD X 14.6.10(7373)

Configuration/Body/Area Scan (10x17x1): Measurement grid: $dx=12$ mm, $dy=12$ mm
Maximum value of SAR (measured) = 0.141 W/kg

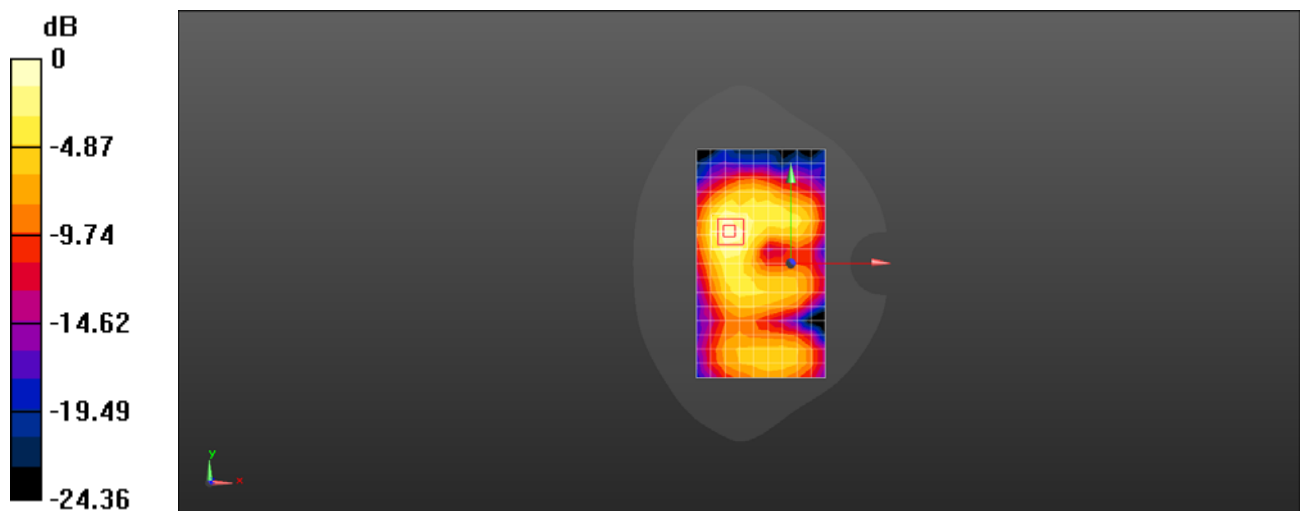
Configuration/Body/Zoom Scan (7x7x7)/Cube 0: Measurement grid: $dx=5$ mm, $dy=5$ mm, $dz=5$ mm

Reference Value = 3.166 V/m; Power Drift = 0.14 dB

Peak SAR (extrapolated) = 0.192 W/kg

SAR(1 g) = 0.102 W/kg; SAR(10 g) = 0.053 W/kg

Maximum value of SAR (measured) = 0.157 W/kg



0 dB = 0.157 W/kg = -8.04 dBW/kg

Test Laboratory: HUAWEI SAR/HAC Lab

ANE-LX2J WiFi 2.4G 802.11b 6CH Back Side 10mm with Battery3

DUT: ANE-LX2J; Type: Smart Phone; Serial: SAR5

Communication System: UID 0, WiFi(802.11a/b/g/n) (0); Frequency: 2437 MHz;Duty Cycle: 1:1
Medium parameters used: $f = 2437$ MHz; $\sigma = 2.014$ S/m; $\epsilon_r = 52.781$; $\rho = 1000$ kg/m³

Phantom section: Flat Section

DASY Configuration:

- Probe: EX3DV4 - SN7489; ConvF(8.24, 8.24, 8.24); Calibrated: 2018-1-9;
- Sensor-Surface: 1.4mm (Mechanical Surface Detection), $z = 1.0, 31.0$
- Electronics: DAE4 Sn1531; Calibrated: 2018-1-3
- Phantom: SAM8; Type: QD 000 P41 AA; Serial: TP-1940
- DASY52 52.8.8(1222); SEMCAD X 14.6.10(7373)

Configuration/Body/Area Scan (10x17x1): Measurement grid: $dx=12$ mm, $dy=12$ mm
Maximum value of SAR (measured) = 0.314 W/kg

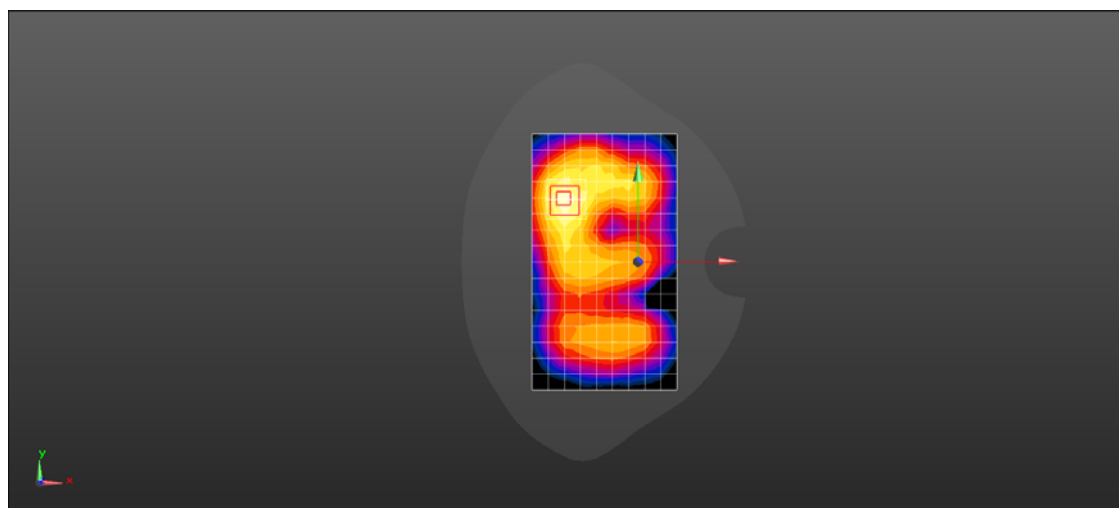
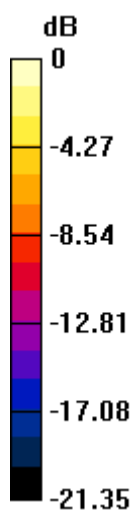
Configuration/Body/Zoom Scan (7x7x7)/Cube 0: Measurement grid: $dx=5$ mm, $dy=5$ mm, $dz=5$ mm

Reference Value = 6.887 V/m; Power Drift = 0.06 dB

Peak SAR (extrapolated) = 0.380 W/kg

SAR(1 g) = 0.199 W/kg; SAR(10 g) = 0.103 W/kg

Maximum value of SAR (measured) = 0.305 W/kg



0 dB = 0.305 W/kg = -5.16 dBW/kg

Test Laboratory: HUAWEI SAR/HAC Lab

ANE-LX2J WiFi 5G 802.11a 6M 64CH Left Tilt

DUT: ANE-LX2J; Type: Smart Phone; Serial: SAR1

Communication System: UID 0, WiFi(802.11a/b/g/n/ac) (0); Frequency: 5320 MHz; Duty Cycle: 1:1
Medium parameters used: $f = 5320$ MHz; $\sigma = 4.705$ S/m; $\epsilon_r = 36.293$; $\rho = 1000$ kg/m³

Phantom section: Left Section

DASY Configuration:

- ε Probe: EX3DV4 - SN7489; ConvF(5.62, 5.62, 5.62); Calibrated: 2018-1-9;
- ε Sensor-Surface: 1.4mm (Mechanical Surface Detection), $z = 1.0, 25.0$
- ε Electronics: DAE4 Sn905; Calibrated: 2017-6-20
- ε Phantom: SAM1; Type: SAM; Serial: TP-1475
- ε DASY52 52.8.8(1222); SEMCAD X 14.6.10(7331)

Configuration/Head/Area Scan (12x18x1): Measurement grid: $dx=10$ mm, $dy=10$ mm
Maximum value of SAR (measured) = 0.342 W/kg

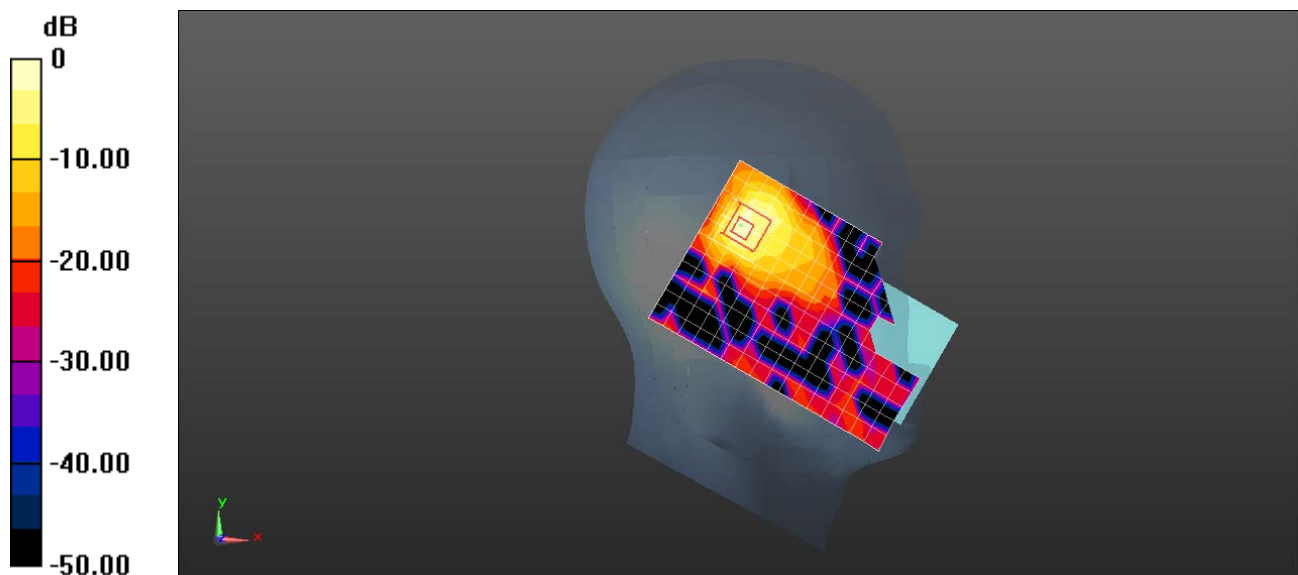
Configuration/Head/Zoom Scan (8x8x7)/Cube 0: Measurement grid: $dx=4$ mm, $dy=4$ mm, $dz=1.4$ mm

Reference Value = 2.262 V/m; Power Drift = 0.13 dB

Peak SAR (extrapolated) = 0.709 W/kg

SAR(1 g) = 0.175 W/kg; SAR(10 g) = 0.046 W/kg

Maximum value of SAR (measured) = 0.424 W/kg



0 dB = 0.342 W/kg = -4.66 dBW/kg

Test Laboratory: HUAWEI SAR/HAC Lab

ANE-LX2J WiFi 5G 802.11a 6M 60CH Back side 15mm

DUT: ANE-LX2J; Type: Smart Phone; Serial: SAR2

Communication System: UID 0, WiFi(802.11a/b/g/n/ac) (0); Frequency: 5300 MHz; Duty Cycle: 1:1
Medium parameters used: $f = 5300$ MHz; $\sigma = 5.283$ S/m; $\epsilon_r = 50.509$; $\rho = 1000$ kg/m³

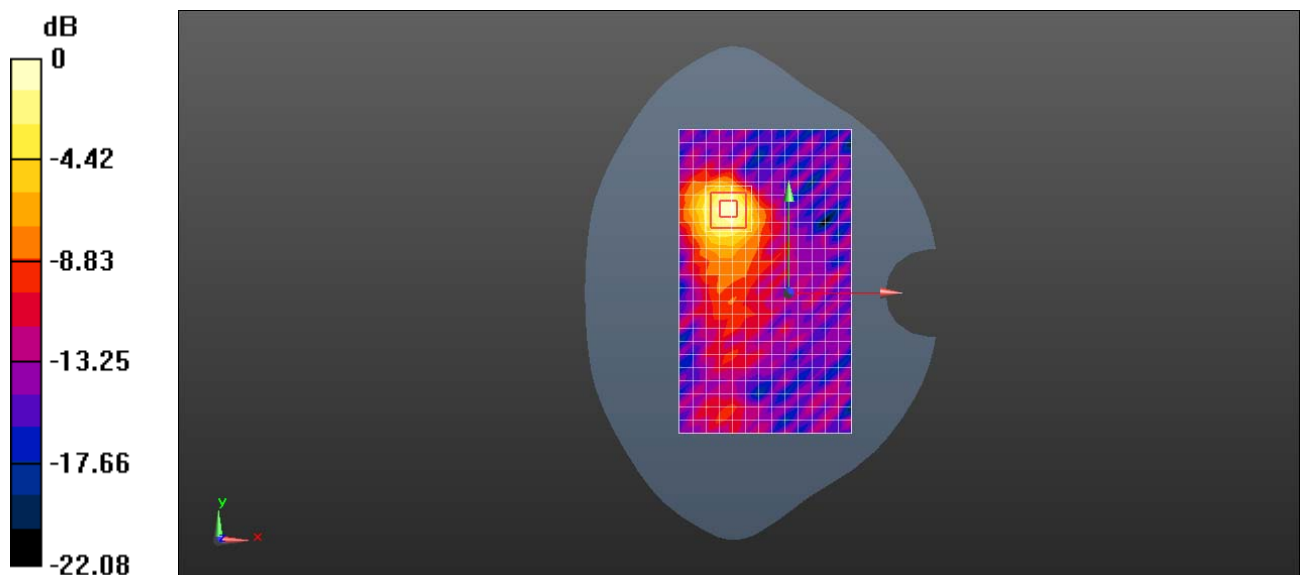
Phantom section: Flat Section

DASY Configuration:

- ε Probe: EX3DV4 - SN3898; ConvF(5.13, 5.13, 5.13); Calibrated: 2017-6-27;
- ε Sensor-Surface: 1.4mm (Mechanical Surface Detection), $z = 1.0, 25.0$
- ε Electronics: DAE4 Sn1236; Calibrated: 2017-7-21
- ε Phantom: SAM4; Type: SAM; Serial: TP-1620
- ε DASY52 52.8.8(1222); SEMCAD X 14.6.10(7331)

Configuration/Body/Area Scan (14x24x1): Measurement grid: $dx=8$ mm, $dy=8$ mm
Maximum value of SAR (measured) = 0.388 W/kg

Configuration/Body/Zoom Scan (8x8x7)/Cube 0: Measurement grid: $dx=4$ mm, $dy=4$ mm, $dz=1.4$ mm
Reference Value = 2.227 V/m; Power Drift = -0.13 dB
Peak SAR (extrapolated) = 0.636 W/kg
SAR(1 g) = 0.183 W/kg; SAR(10 g) = 0.063 W/kg
Maximum value of SAR (measured) = 0.390 W/kg



0 dB = 0.388 W/kg = -4.11 dBW/kg

Test Laboratory: HUAWEI SAR/HAC Lab

ANE-LX2J WiFi 5G 802.11a 6M 60CH Back side 10mm

DUT: ANE-LX2J; Type: Smart Phone; Serial: SAR2

Communication System: UID 0, WiFi(802.11a/b/g/n/ac) (0); Frequency: 5220 MHz; Duty Cycle: 1:1
Medium parameters used: $f = 5220$ MHz; $\sigma = 5.164$ S/m; $\epsilon_r = 50.682$; $\rho = 1000$ kg/m³

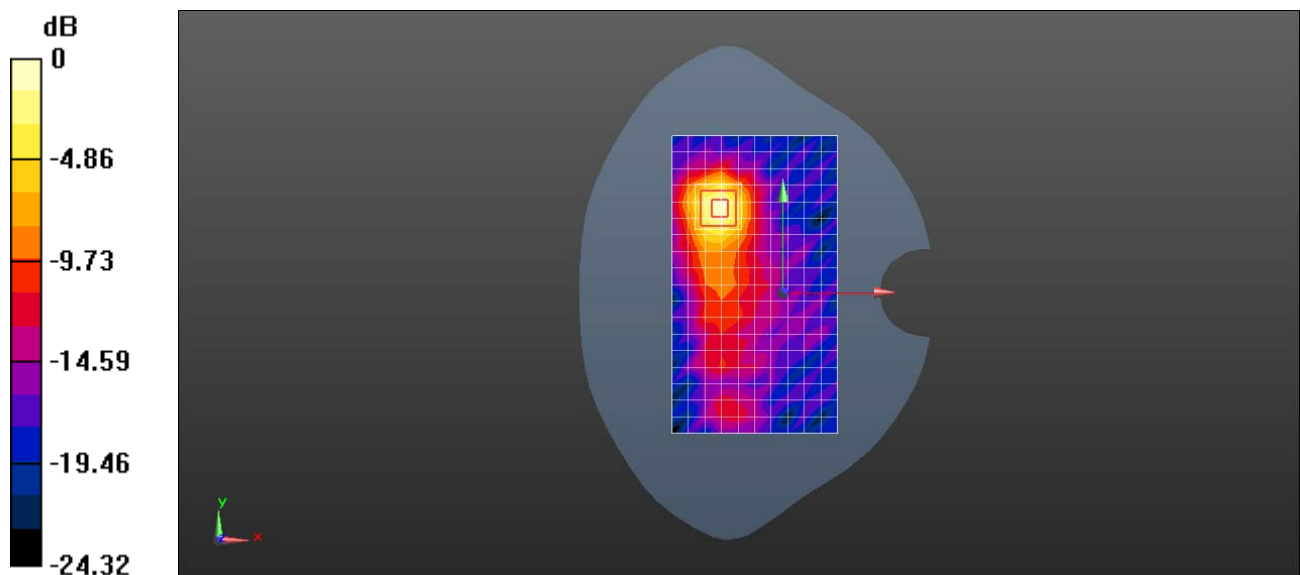
Phantom section: Flat Section

DASY Configuration:

- ε Probe: EX3DV4 - SN3898; ConvF(5.13, 5.13, 5.13); Calibrated: 2017-6-27;
- ε Sensor-Surface: 1.4mm (Mechanical Surface Detection), $z = 1.0, 25.0$
- ε Electronics: DAE4 Sn1236; Calibrated: 2017-7-21
- ε Phantom: SAM4; Type: SAM; Serial: TP-1620
- ε DASY52 52.8.8(1222); SEMCAD X 14.6.10(7331)

Configuration/Body/Area Scan (11x19x1): Measurement grid: $dx=10$ mm, $dy=10$ mm
Maximum value of SAR (measured) = 1.06 W/kg

Configuration/Body/Zoom Scan (8x8x7)/Cube 0: Measurement grid: $dx=4$ mm, $dy=4$ mm, $dz=1.4$ mm
Reference Value = 3.636 V/m; Power Drift = 0.18 dB
Peak SAR (extrapolated) = 1.73 W/kg
SAR(1 g) = 0.535 W/kg; SAR(10 g) = 0.181 W/kg
Maximum value of SAR (measured) = 1.14 W/kg



0 dB = 1.06 W/kg = 0.25 dBW/kg

Test Laboratory: HUAWEI SAR/HAC Lab

ANE-LX2J BT DH5 39CH Left Touch with Battery2

DUT: ANE-LX2J; Type: Smart Phone; Serial: SAR2

Communication System: UID 0, BT (0); Frequency: 2441 MHz; Duty Cycle: 1:1

Medium parameters used: $f = 2441$ MHz; $\sigma = 1.797$ S/m; $\epsilon_r = 40.164$; $\rho = 1000$ kg/m³

Phantom section: Left Section

DASY Configuration:

- ε Probe: EX3DV4 - SN3898; ConvF(7.55, 7.55, 7.55); Calibrated: 2017-6-27;
- ε Sensor-Surface: 1.4mm (Mechanical Surface Detection), $z = 1.0, 31.0$
- ε Electronics: DAE4 Sn1236; Calibrated: 2017-7-21
- ε Phantom: SAM3; Type: SAM; Serial: TP-1597
- ε DASY52 52.8.8(1222); SEMCAD X 14.6.10(7331)

Configuration/Head/Area Scan (10x16x1): Measurement grid: $dx=12$ mm, $dy=12$ mm
Maximum value of SAR (measured) = 0.0428 W/kg

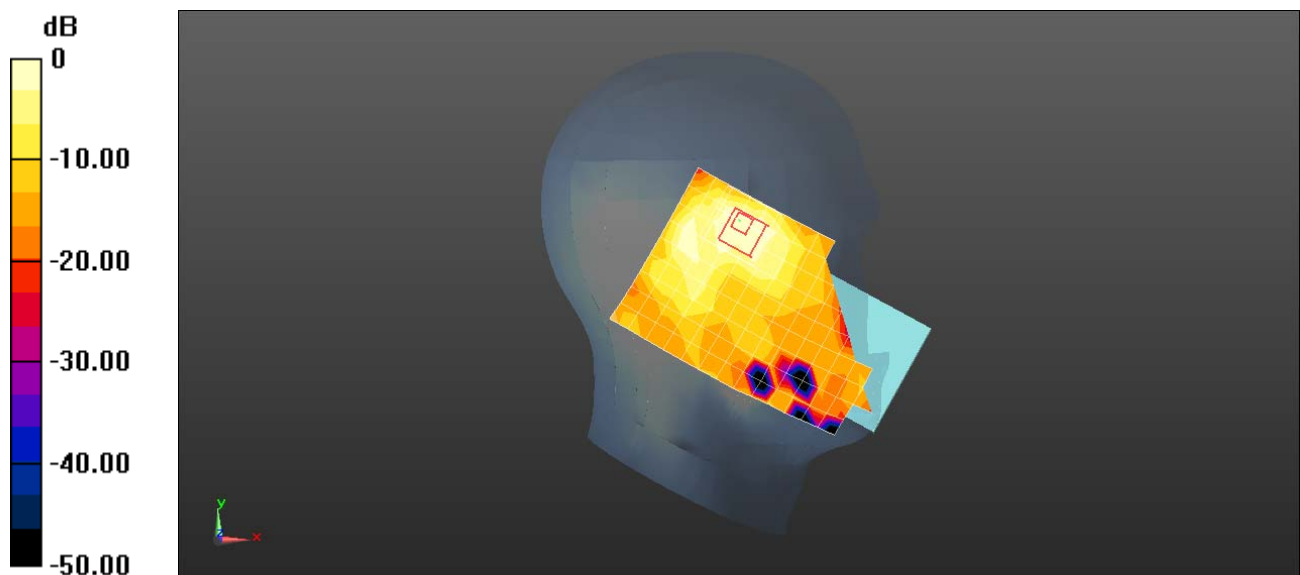
Configuration/Head/Zoom Scan (8x8x5)/Cube 0: Measurement grid: $dx=5$ mm, $dy=5$ mm, $dz=5$ mm

Reference Value = 3.544 V/m; Power Drift = 0.18 dB

Peak SAR (extrapolated) = 0.0810 W/kg

SAR(1 g) = 0.031 W/kg; SAR(10 g) = 0.015 W/kg

Maximum value of SAR (measured) = 0.0613 W/kg



0 dB = 0.0428 W/kg = -13.69 dBW/kg