

OEM Installation Guidance Document
For Broadcom BCM943228Z
FCC ID: QDS-BRCM1084; IC: 4324A-BRCM1084

Conditions on using BRCM regulatory approvals:

- A. Customer must ensure that its product (the “CUSTOMER Product”) is electrically identical to Broadcom’s product. Customer acknowledges that any modifications to Broadcom’s product may invalidate regulatory approvals in relation to the CUSTOMER Product, or may necessitate notifications to the relevant regulatory authorities.
- B. OEM must inform Broadcom of any changes which may require Class I or Class II permissive changes. Any substituted antenna and RF cable assemblies must be approved by Broadcom in order to maintain compliance.
- C. Appropriate labels must be affixed to the CUSTOMER Product that comply with applicable regulations in all respects.
- D. A user’s manual or instruction manual must be included with the customer product that contains the text as required by applicable law. Without limitation of the foregoing, an example (for illustration purposes only) of possible text to include is set forth below:

1. USA—Federal Communications Commission (FCC)

FCC COMPLIANCE STATEMENT:

This device complies with part 15 of the FCC Rules. Operation is subject to the following two conditions:

(1) This device may not cause harmful interference, and (2) this device must accept any interference received, including interference that may cause undesired operation.

INFORMATION TO USER:

This equipment has been tested and found to comply with the limits for a Class B digital device, pursuant to Part 15 of FCC Rules. These limits are designed to provide reasonable protection against harmful interference in a residential installation. This equipment generates, uses, and can radiate radio frequency energy. If not installed and used in accordance with the instructions, it may cause harmful interference to radio communications. However, there is no guarantee that interference will not occur in a particular installation. If this equipment does cause harmful interference to radio or television reception, which can be determined by tuning the equipment off and on, the user is encouraged to try and correct the interference by one or more of the following measures:

- Reorient or relocate the receiving antenna
- Increase the distance between the equipment and the receiver.
- Connect the equipment to outlet on a circuit different from that to which the receiver is connected.
- Consult the dealer or an experienced radio/TV technician for help.

OEM Installation Guidance Document
For Broadcom BCM943228Z
FCC ID: QDS-BRCM1084; IC: 4324A-BRCM1084

Any changes or modifications not expressly approved by the party responsible for compliance could void the user's authority to operate the equipment.

CAUTION: (this only applicable to 5GHz device)

This device is restricted to indoor use due to its operation in the 5.15 to 5.25 GHz frequency range. FCC requires this product to be used indoors for frequency range 5.15 to 5.25 GHz to reduce the potential for harmful interference to co-channel Mobile Satellite systems.

High power radars are allocated as primary users of the 5.25 to 5.35 GHz and 5.65 to 5.85 GHz bands. These radar stations can cause interference with and/or damage this device.

System integrators must include the FCC ID on the end product.

FCC Radio-Frequency Exposure & Approval Conditions:

1. For mobile applications:

Antennas must be installed in the display section of Netbook/notebook/laptop computer to provide at least 20cm separation distance from the transmitting antenna to the body of user during normal operating condition.

For portable applications:

-Antennas must be installed in the display section or underneath the keyboard in Netbook/notebook/laptop computers to provide at least 5mm separation distance from the transmitting antenna to the body of user, or any other person during normal operating condition. Configuration in tablets must be with at least 10mm antenna-to-enclosure separation distance.

-The WLAN antennas used must be the same antennas as in this filing. The distance between two antennas (Chain 1 and Chain 2) is 5cm.

- For standalone SAR testing, the antenna is mounted on lossless foam material for testing. In order to use Broadcom modular approval, PC-OEMs must install antennas with non-conductive materials surrounding the antenna.

2. The antenna(s) used for this transmitter must not be collocated or operating in conjunction with any other antenna or transmitter within a host device, except in accordance with FCC multi-transmitter product procedures.

3. The regulatory label on the final system must include the statement: "Contains FCC ID: QDS-BRCM1084" or using electronic labeling method as documented in KDB 784748.

OEM Installation Guidance Document
For Broadcom BCM943228Z
FCC ID: QDS-BRCM1084; IC: 4324A-BRCM1084

4. The final system integrator must ensure there is no instruction provided in the user manual or customer documentation indicating how to install or remove the transmitter module except such device has implemented two-ways authentication between module and the host system.

5. The final host manual shall include the following regulatory statement:

This equipment has been tested and found to comply with the limits for a Class B digital device, pursuant to Part 15 of FCC Rules. These limits are designed to provide reasonable protection against harmful interference in a residential installation. This equipment generates, uses, and can radiate radio frequency energy. If not installed and used in accordance with the instructions, it may cause harmful interference to radio communications. However, there is no guarantee that interference will not occur in a particular installation. If this equipment does cause harmful interference to radio or television reception, which can be determined by tuning the equipment off and on, the user is encouraged to try and correct the interference by one or more of the following measures:

- Reorient or relocate the receiving antenna
- Increase the distance between the equipment and the receiver.
- Connect the equipment to outlet on a circuit different from that to which the receiver is connected.
- Consult the dealer or an experienced radio/TV technician for help.

This device complies with Part 15 of the FCC Rules. Operation is subject to the following two conditions: (1) This device may not cause harmful interference, and (2) this device must accept any interference received, including interference that may cause undesired operation.

This equipment complies with FCC radiation exposure limits set forth in uncontrolled environment. This equipment should be installed and operated with minimum distance 20 cm between the radiator & your body.

2. Canada - Industry Canada (IC)

This device complies with Industry Canada licence-exempt RSS standard(s). Operation is subject to the following two conditions: (1) this device may not cause interference, and (2) this device must accept any interference, including interference that may cause undesired operation of the device.

Under Industry Canada regulations, this radio transmitter may only operate using an antenna of a type and maximum (or lesser) gain approved for the transmitter by Industry Canada. To reduce potential radio interference to other users, the antenna type and its gain should be so chosen that the equivalent isotropically radiated power (e.i.r.p.) is not more than that necessary for successful communication.

This radio transmitter, IC ID: 4324A-BRCM1084, has been approved by Industry Canada to operate with the onboard antenna or a detachable WLAN antenna with a maximum

OEM Installation Guidance Document
For Broadcom BCM943228Z
FCC ID: QDS-BRCM1084; IC: 4324A-BRCM1084

gain of 3.33dB/2.4GHz and 6.21dBi/5GHz. Any other detachable antennas, with a different type or having a gain greater than 3.33dB/2.4GHz and 6.21dBi/5GHz are strictly prohibited for use with this device. The required antenna impedance is 50 ohms.

Caution: (this only applicable to UNII device)

- (i) the device for operation in the band 5150-5250 MHz is only for indoor use to reduce the potential for harmful interference to co-channel mobile satellite systems;
- (ii) the maximum antenna gain permitted for devices in the bands 5250-5350 MHz and 5470-5725 MHz shall comply with the e.i.r.p. limit; and
- (iii) the maximum antenna gain permitted for devices in the band 5725-5825 MHz shall comply with the e.i.r.p. limits specified for point-to-point and non point-to-point operation as appropriate.

High power radars are allocated as primary users of the 5.25 to 5.35 GHz and 5.65 to 5.85 GHz bands. These radar stations can cause interference with and/or damage this device.

Caution: Exposure to Radio Frequency Radiation.

To comply with RSS 102 RF exposure compliance requirements, for mobile configurations, a separation distance of at least 20 cm must be maintained between the antenna of this device and all persons. This device must not be co-located or operating in conjunction with any other antenna or transmitter.

System integrators must include a label with “Contains IC: 4324A-BRCM1084” on the end product. Industry Canada user statements should be provided in both English and French, at the time each product is offered for sale or lease in Canada.

For portable configurations, antennas must be installed in the display section or underneath the keyboard in Netbook/notebook/laptop/tablet computers to provide at least 5mm separation distance from the transmitting antenna to the body of user, or any other person during normal operating condition.

French:

Cet appareil est conforme avec Industrie Canada exempts de licence standard RSS (s) l'opération est soumise aux deux conditions suivantes: . (1) ce dispositif ne doit pas causer d'interférences et (2) cet appareil doit accepter toute interférence , y compris les interférences qui peuvent provoquer un mauvais fonctionnement de l'appareil.

Conformément à la réglementation d'Industrie Canada, cet émetteur radio ne peut fonctionner à l'aide d'une antenne d'un type et maximum (ou moins) Gain approuvé pour l'émetteur par Industrie Canada. Afin de réduire le risque d'interférence avec d'autres utilisateurs, le type d'antenne et son gain doivent être choisis que la puissance isotrope rayonnée équivalente (PIRE) ne dépasse pas ce qui est nécessaire pour une communication réussie .

OEM Installation Guidance Document
For Broadcom BCM943228Z
FCC ID: QDS-BRCM1084; IC: 4324A-BRCM1084

Cet émetteur radio , IC ID: 4324A – BRCM1084 , a été approuvé par Industrie Canada pour fonctionner avec l'antenne intégrée ou une antenne WLAN amovible avec un gain maximum de 3.33dB/2.4GHz et 6.21dBi/5GHz Les autres antennes détachables, avec . un type différent ou d'avoir un gain supérieur à 3.33dB/2.4GHz et 6.21dBi/5GHz sont strictement interdits pour une utilisation avec cet appareil. L'impédance d'antenne requise est de 50 ohms.

Attention: (ceci ne s'applique à un appareil UNII)

(I) l'appareil pour fonctionner dans la bande 5150-5250 MHz est réservé à une utilisation en intérieur afin de réduire les risques d'interférence nuisible aux systèmes mobiles par satellite co- canal;

(ii) le gain d'antenne maximal autorisé pour les dispositifs dans les bandes 5250-5350 MHz et 5470-5725 MHz doivent respecter la limite de pire , et

(iii) le gain d'antenne maximal autorisé pour les dispositifs fonctionnant dans la bande 5725-5825 MHz doivent respecter les limites de pire spécifiées pour le point -à-point et l'exploitation non point à point , le cas échéant .

Les radars à haute puissance sont désignés comme utilisateurs principaux de 5,25 à 5,35 GHz et 5,65 à 5,85 GHz . Ces stations radars peuvent causer des interférences et / ou endommager cet appareil .


Attention: Exposition aux radiations de fréquences radio.


Pour se conformer aux normes RSS 102 exigences de conformité d'exposition aux radiofréquences , pour les configurations mobiles , une distance de séparation d'au moins 20 cm doit être maintenue entre l' antenne de cet appareil et toutes les personnes . Cet appareil ne doit pas être co- localisées ou opérant en conjonction avec une autre antenne ou transmetteur .

Les intégrateurs de systèmes doivent comporter une étiquette avec «Contient IC: 4324A – BRCM1084 " . Sur le produit final comptes d'utilisateur d'Industrie Canada devraient être fournis en anglais et en français , au moment où chaque produit est offert à la vente ou la location au Canada.

Pour les configurations portables , antennes doivent être installées dans la section d'affichage ou sous le clavier dans Netbook / portables / ordinateurs portable / tablette pour assurer une distance de séparation d'au moins 5 mm de l'antenne d'émission sur le corps de l'utilisateur , ou toute autre personne au cours de fonctionnement normal .

3. Europe - EU Restrictions

This equipment needs to be marked with the **CE 0560**  symbol and can be used throughout the European community.

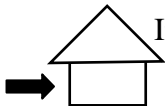
Marking by the symbol  indicates that usage restrictions apply.

OEM Installation Guidance Document
For Broadcom BCM943228Z
FCC ID: QDS-BRCM1084; IC: 4324A-BRCM1084

Information to be supplied to the users:

802.11a Restrictions:

- This product is for indoor use only when using channels 36, 40, 44, 48, 52, 56, 60, or 64 (5150–5350 MHz).
- DFS and TPC must remain enabled to ensure product compliance with EC regulations.
- To ensure compliance with local regulations, be sure to select the country in which the access point is installed.
- This product can be used as shown in the table below:

5 GHz wireless LAN IEEE 802.11a	 Indoor Use Only	A, AND, B, CH, D, CY, CZ, DK, ES, EST, F, FIN, FL, FR, GB, GR, H, I, IRL, IS, L, LT, M, MC, N, NL, P, PL, RSM, S, SK, SLO, V
------------------------------------	--	--

Caution: Exposure to Radio Frequency Radiation.

To comply with RF exposure compliance requirements, for mobile configurations, a separation distance of at least 20 cm must be maintained between the antenna of this device and all persons.

Czech:

User's Manual in Czech language and a statement of conformity with Directive 1999/5/EC in Czech language must be enclosed to each product.

France (Removed after July 1, 2012):

2.4GHz for Metropolitan France:

In all Metropolitan départements, wireless LAN frequencies can be used under the following conditions, either for public or private use:

- Indoor use: maximum power (EIRP*) of 100 mW for the entire 2400-2483.5 MHz frequency band
- Outdoor use: maximum power (EIRP*) of 100 mW for the 2400-2454 MHz band and with maximum power (EIRP*) of 10 mW for the 2454-2483 MHz band

Italy:

For private use, a general authorisation is required if WAS/RLAN's are used outside own premises. For public use, a general authorisation is required

Note for system integrators:

- The module is tested to comply with the requirement of the R&TTE Directive. System integrators are responsible for compliance of the final device with the R&TTE Directive.
- Packaging: CE Marking must also be on the outer packaging of the product. The outer packaging must also provide an indication as to where the device is intended to be used and OR conversely, where there may be restrictions for use.

4. Taiwan - NCC Statement to be included in the user guide

Statement- For general products

低功率電波輻射性電機管理辦法

第十二條經型式認證合格之低功率射頻電機，非經許可，公司、商號或使用者均不得擅自變更頻率、加大功率或變更原設計之特性及功能。

第十四條低功率射頻電機之使用不得影響飛航安全及干擾合法通信；經發現有干擾現象時，應立即停用，並改善至無干擾時方得繼續使用。前項合法通信，指依電信規定作業之無線電信。低功率射頻電機須忍受合法通信或工業、科學及醫療用電波輻射性電機設備之干擾。

Additional Statement - For 5G Band products

在5.25G ~5.35G頻帶內操作之無線資訊傳輸設備僅適於室內使用

Translation:

Article 12

Without permission, any company, firm or user shall not alter the frequency, increase the power, or change the characteristics and functions of the original design of the certified lower power frequency electric machinery.

Article 14

The application of low power frequency electric machineries shall not affect the navigation safety nor interfere a legal communication, if an interference is found, the service will be suspended until improvement is made and the interference no longer exists.


The foregoing legal communication refers to the wireless telecommunication operated according to the telecommunications laws and regulations.

The low power frequency electric machinery should be able to tolerate the interference of the electric wave radiation electric machineries and equipments for legal communications or industrial and scientific applications.

Radio devices using 5.25-5.35GHz bands are restricted to indoor use only.

Appendix:

模組認證合格標籤 (ID):

“ CCXXxxLPyyyZz ”

如果使用本模組之平台,無法在外部看見審驗合格標籤時,應在該平台的外部明顯標示

“內含射頻模組  CCXXxxLPyyyZz” .

5. Korea

Include the following statement either on the label or in the User Guide.

"당해 무선설비가 전파혼신 가능성이 있으므로 인명안전과 관련된 서비스는 할 수 없음"

6. Argentina

The current approval is in the name of Broadcom's local representative. It may be necessary to obtain regulatory approval in the name of the local distributor or importer. We suggest manufacturers check with their local distributors and importers in Argentina.

7. Brazil - Anatel

Before using Broadcom Anatel approvals,

1. PC- OEM must make arrangement for its local offices or distributors to provide maintenance, technical assistance or replace any faulty products sold in Brazil.
2. All warranty services will be provided by the distributors or PC-OEM sales support in Brazil. An official agreement stating warranty responsibilities must be signed and made available to Broadcom.

Interference statement to be included in the Users Guide

"Este equipamento opera em caráter secundário, isto é, não tem direito a proteção contra interferência prejudicial, mesmo de estações do mesmo tipo, e não pode causar interferência a sistemas operando em caráter primário."

Translation:

"This equipment operates in secondary character. It can be affected by harmful interference. However, it cannot cause interference to systems operating in primary character."

8. South Africa – ICASA

PC-OEMs must make arrangement for importers to supply spare parts and carry out repairs in South Africa.

9. Indonesia – POSTEL, Kenya – CCK, Nepal - NTA

PC-OEMs must make arrangement for importers to provide product warranty and after sales services.

10. Japan – MIC

Radio devices using 5.15-5.35GHz bands are restricted to indoor use only.

11. Mexico

PC-OEMs must make arrangement for importers to provide User Manual in Spanish in Mexico.

The User Manual must feature the following mandatory statement:

“La operación de este equipo está sujeta a las siguientes dos condiciones: (1) es posible que este equipo o dispositivo no cause interferencia perjudicial y (2) este equipo o dispositivo debe aceptar cualquier interferencia, incluyendo la que pueda causar su operación no deseada.”

Translation:

The operation of this device is subject to the following two conditions:

- (1) this equipment or device must not cause harmful interference and
- (2) this equipment or device must accept any interference, including interference which could otherwise cause its undesired operation.

12. CB Certifications

PC-OEMs must provide User Guides in the language suitable for the countries when shipping products to countries listed in the CB reports.

13. Moldova- Labeling to be included

Proper Marking must be included on each certified unit shipping into Moldova,

14. Tunisia

When shipping into Tunisia, only 5150-5350MHz is allowed for the 5GHz WLAN. Passive Scan on other 5GHz channels is prohibited.



Introduction: Broadcom BCM943228Z PCI-E Mini Card User's Guide

[Before you begin](#)

[Things you should know](#)

[BCM943228Z network](#)

Before you begin

Obtain the following information from your network administrator (if you are a home user, obtain this information from the person that installed your wireless access point):

- Network names (SSID) of the specific wireless networks that you want to connect to.
- WEP (Wired Equivalent Privacy) key information (if any) for the networks you want to connect to.
- For Microsoft® Windows® networking, your customer name and workgroup name.
- For your network account, your user name and password.
- Your IP address (if not using a DHCP server)

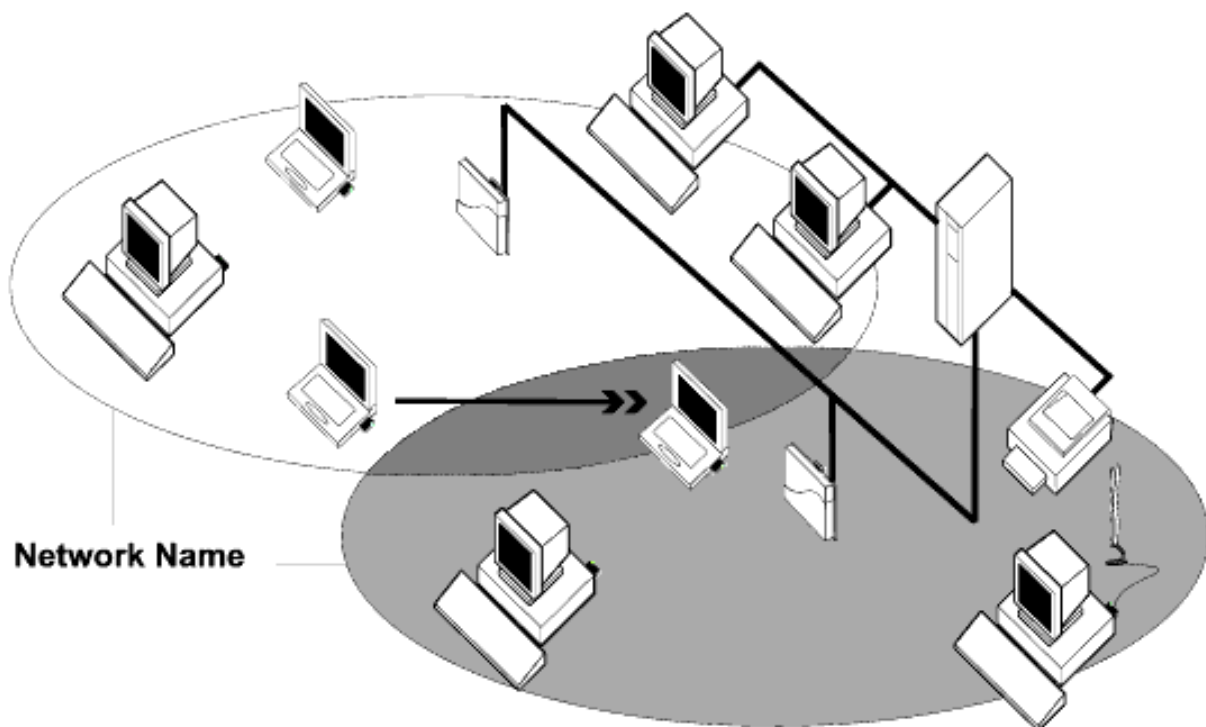
Things you should know

When you start your computer, your Broadcom BCM943228Z PCI-E Mini card detects certain wireless networks that are within range. Before you can connect to these and other wireless networks, you must configure a profile for each network using the information you obtained from your network administrator.

WEP is a security protocol for wireless local area networks (defined in the IEEE 802.11g standard) that encrypts data sent over radio waves. The use of the WEP key is optional and can be enabled or disabled. If the network you are connecting to has enabled WEP, you must also enable WEP in the network profile and set the WEP key to match the WEP key used by the network. Otherwise, you cannot connect to the network.

Broadcom BCM943228Z network

The Broadcom BCM943228Z solution allows you to make a wireless connection to a network, as illustrated below.



[Back to top](#)

[Back to Contents Page](#)

Using the Broadcom Wireless Utility: Broadcom AirForce™ 54g™ and Intensi-fi™ Wireless Network Adapter User Guide

 [Overview](#)

 [Utility Components](#)

Overview

The Broadcom Wireless Utility enables you to do the following network tasks:

- Manage your wireless networks and create network connection profiles ([Wireless Networks](#) tab)
- Connect to available networks ([utility icon](#) in notification area)
- Get information about the network status and signal and noise of your network connection ([Link Status](#) tab)
- View current and accumulated statistics ([Statistics](#) tab)
- Find out which broadcasting networks are in range and search for nonbroadcasting networks ([Site Monitor](#) tab)
- Run tests on the wireless network adapter ([Diagnostics](#) tab)
- Get date and version information about the utility, and software, hardware, and location details about your wireless network adapter ([Information](#) tab)
- Manually add or delete trusted servers and enable the manual acceptance or rejection of auto-provisioning and A-ID group changes ([Wireless Networks](#) tab)
- Manually import EAP-FAST PACs ([Wireless Networks](#) tab)

In the utility, you can open Wireless Network Wizard to connect to a basic network or create an ad hoc network, or you can open the Wireless Network Connection Settings tool to connect to an advanced network. To do any of the other tasks, click the tab that is associated with the described task.

To start using the utility, right-click the utility icon  in the notification area, and then click **Open Utility**. If the icon is not available, open **Broadcom Wireless Utility** in Control Panel.



NOTE: The utility icon may not appear exactly as shown here. See "[Table 1. Signal Strength Indicated by the Broadcom Wireless Utility Icon](#)."

Utility Components

Utility components include the utility icon in the notification area, the six utility tabs, and Wireless Network Connection Settings.

Utility Icon

To do any of the following tasks or operations, right-click the utility icon, and then click the appropriate item.

- Open the on-line Broadcom AirForce™ 54g™ and Intensi-fi™ Wireless Network Adapter User Guide (Help Files)
- Open About WLAN Card Utility to view links to Broadcom and Broadcom Customer Support websites and to view the version and date of the utility (About)
- Hide the utility icon (Hide Tray Icon)
- Disable or enable the radio (Disable/Enable Radio)
- Connect to any of the networks for which you have created a connection profile and are within range (Connect To)
- Open the utility to the Wireless Networks tab (Open Utility)
- Open the utility to the Link Status tab to view information about the connection (Status)
- Display a log of your wireless network events (Display Log)

Wireless Networks Tab

The **Wireless Networks** tab has tools that enable you to do the following:

- Use the utility to manage your wireless networks
- Add a network connection profile
- Edit or remove a network connection profile
- Change the order in which profiles are listed under **Preferred network connections**
- Connect to any listed network without changing its order in the list
- Disable or enable the radio (Disable/Enable Radio)
- Show or hide the utility icon in the notification area
- Choose which type of network to access
- Lock or unlock a preferred network connection profile
- Save your wireless network connection profiles as a [WPN](#) file
- Import a WPN file
- Manually add or delete trusted servers and enable the manual acceptance or rejection of auto-provisioning and A-ID group changes
- Manually import EAP-FAST PACS

On the **Add** menu, you can use either the wireless network wizard that is available from Broadcom Wireless Utility (see [Connecting to a Basic Network or Creating an Ad Hoc Network Using the Wireless Network Wizard](#)) or the utility (see "[Connecting to an Advanced Network Using the Broadcom Wireless Utility](#)") to add a network connection profile.

To use the utility to manage your wireless networks, select the **Let this tool manage your wireless networks** check box.

To add a network connection profile, click the **Add** arrow, and then click either **Use Wizard (basic network)** or **Use Utility (advanced network)**.

To edit or remove a network connection profile, right-click the network name, and then click either **Edit** or **Remove**.

To change the order in which profiles are listed under **Preferred network connections**, click the network name, and then click either the up arrow or down arrow.

To connect to any listed network without changing its order in the list, right-click the network name, and then click **Connect**.

To disable the radio, clear the **Enable radio** check box. To enable the radio, select the **Enable radio** check box.

To hide the utility icon , clear the **Show utility icon** check box. To show the icon, select the **Show utility icon** check box.

To choose the type of network to access, click the **Options** arrow, and then click **Advanced**.

To lock or unlock a preferred network connection profile, right-click anywhere in the row that lists the network name, and then click **Lock** or **Unlock**, as appropriate.

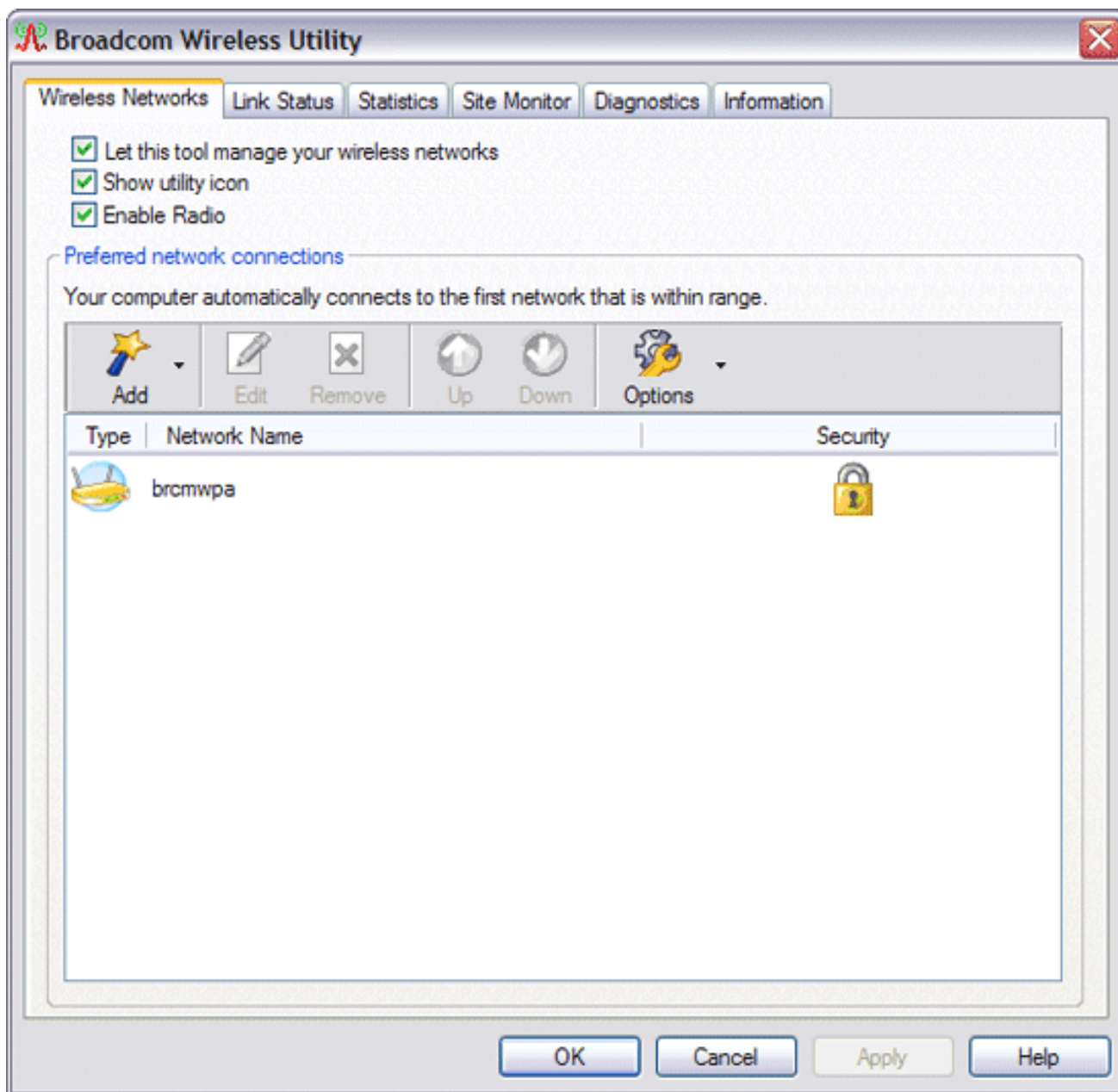


NOTE: You must have system or administrator rights to be able to lock or unlock a profile.

To save your wireless network connection profiles to a WPN file, click the **Options** arrow, and then click **Export** (see "[Saving Preferred Network Connection Settings to a File](#)" in "Connecting to an Advanced Network Using the Broadcom Wireless Utility."

To import a WPN file, click the **Options** arrow, and then click **Import** (see "[Importing a Preferred Network Connection Profiles File](#)" in "Connecting to an Advanced Network Using the Broadcom Wireless Utility."

Click **Apply** or **OK** after you change any of the settings for the change to take effect.



For networks that use the EAP-FAST authentication method, the Wireless WLAN Card Utility automatically adds trusted servers to the trust list and accepts [auto-provisioning](#) and [AID](#) (A-ID) group changes by default. The utility also enables you to import a [Protected Access Credential](#) (PAC). From the utility, you can also manually add or delete trusted servers, enable the manual acceptance or rejection of auto-provisioning and A-ID group changes, or import or delete PACS, as described in the following instructions. In general, you should use the default settings. Therefore, check with the network administrator before you make any changes.

To manually add a trusted server to the trust list

1. Open Broadcom Wireless Utility.
2. From the **Wireless Networks** tab, click **Options**, point to **Cisco Compatible Extensions**, and then click **Administrator Settings**.
3. Click **Add**.
4. Type the A-ID friendly name of the trusted server in the space provided, and then click **OK**.

To delete a trusted server from the trust list


1. Open Broadcom Wireless Utility.
2. From the **Wireless Networks** tab, click **Options**, point to **Cisco Compatible Extensions**, and then click **Administrator Settings**.
3. In the **Trust list (A-ID)**, click the name of the trusted server you want to delete, and then click **Delete**.

To change the default settings for administering Cisco Compatible Extensions

1. Open Broadcom Wireless Utility.
2. From the **Wireless Networks** tab, click **Options**, point to **Cisco Compatible Extensions**, and then click **Administrator Settings**.
3. Clear the **Disable auto-provision prompt** check box to enable manual acceptance or rejection.
4. Clear the **Disable A-ID group change prompt** check box to enable manual acceptance or rejection.
5. Select the **Auto-provision PAC only once** check box to auto-provision a Protected Access Credential (PAC) only once.

To import or remove an EAP-FAST PAC

1. Open Broadcom Wireless Utility.
2. From the **Wireless Networks** tab, click **Options**, point to **Cisco Compatible Extensions**, and then click **Manage PACs**.
3. To import a PAC: in Protected Access Credentials, click **Add**, and then follow the on-screen instructions.

 **NOTE:** The PAC is password protected, so you must know the password to be able to import the PAC.

-or-

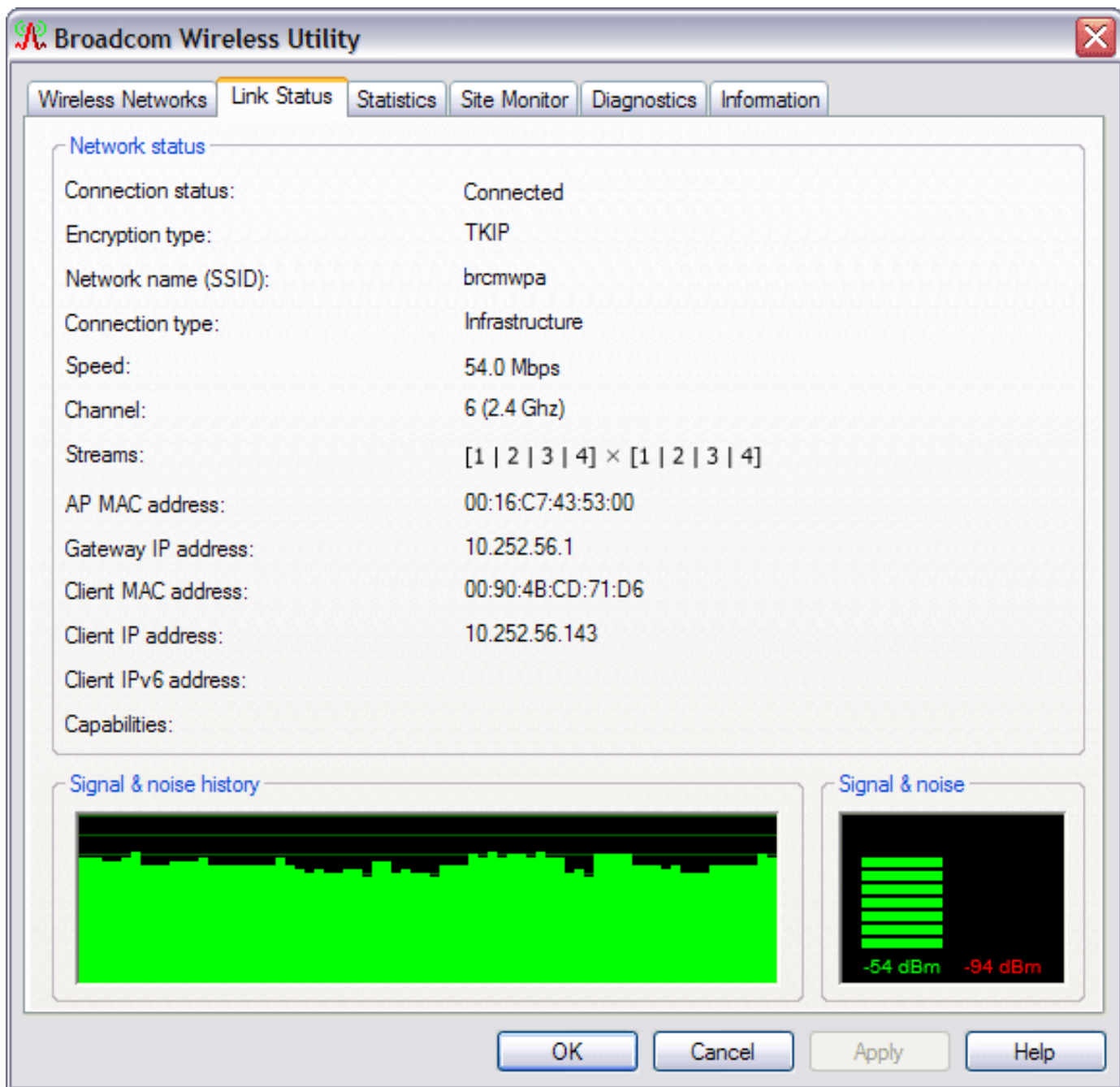
To remove a PAC: click anywhere in the row that lists the PAC, and then click **Remove**.


Link Status

Network status and signal and noise information about your network connection is displayed on the Link Status tab.


NOTES:

- For IEEE 802.11n connections, speed is indicated by an [MCS value](#).
- [Radio Stream](#) information is provided only for IEEE 802.11n connections.
- Click anywhere in the **Signal & noise history** box to change the type of history being displayed. Successive clicks change the type from both signal and noise, to noise only, to signal only, and back to both signal and noise.







The status of your network connection is also indicated by the appearance of the utility icon . The number and color of the radio waves indicates the strength or weakness of the signal (see [Table 1. Signal Strength Indicated by the Broadcom Wireless Utility Icon](#) for details).

To view the network name (SSID), speed, signal strength rating, connection status, and the client IP address of the network connection, move your mouse pointer over the utility icon.

 **NOTE:** On computers running Windows XP, you also can view the SSID, speed, signal strength rating, and connection status by moving your mouse pointer over the

Windows **Wireless Network Connection** icon  in the notification area.

Table 1. Signal Strength Indicated by the Broadcom Wireless Utility Icon

Icon Appearance	Indicated Received Signal Strength
	The signal strength is very good or excellent .
	The signal strength is weak . See Troubleshooting for suggested action.
	No signal is being received. See Troubleshooting for probable causes and suggested action.
	The radio is disabled or switched off. See Troubleshooting for suggested action.

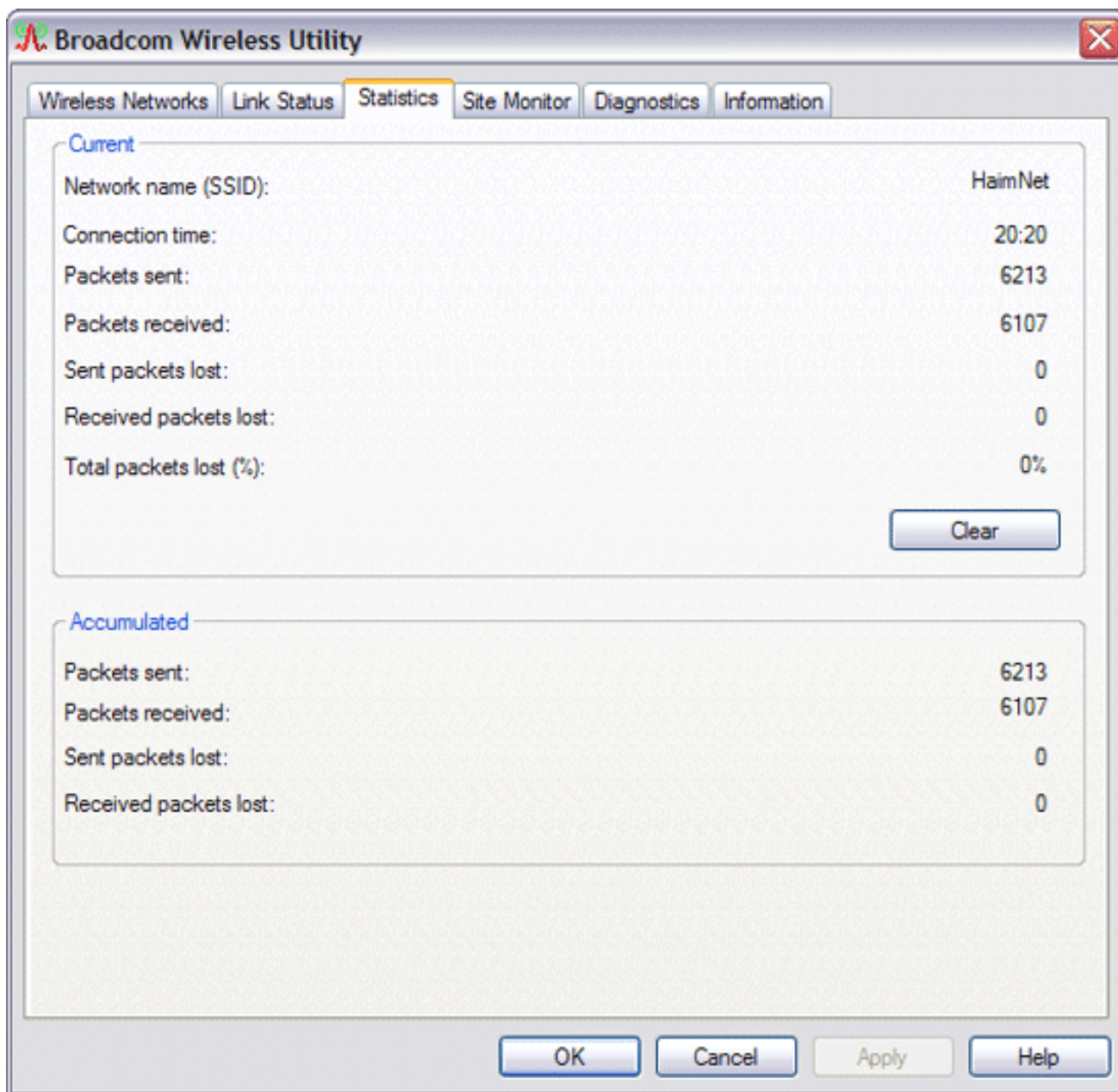
Statistics

On the Statistics tab under Current, the following current statistics are shown:

- Network name (SSID)
- Connection time
- Packets sent
- Packets received
- Sent packets lost
- Received packets lost
- Total packets lost (%)

Under Accumulated, the following accumulated statistics are shown:

- Packets sent
- Packets received
- Sent packets lost
- Received packets lost



Site Monitor

Basic Site Monitor

On the Site Monitor tab, the basic Site Monitor displays information about [wireless routers/APs](#) and [ad hoc networks](#) that are within range. To sort the list, click the column heading that shows the characteristic you want to sort by. For example, to sort by signal strength, click **Signal**.

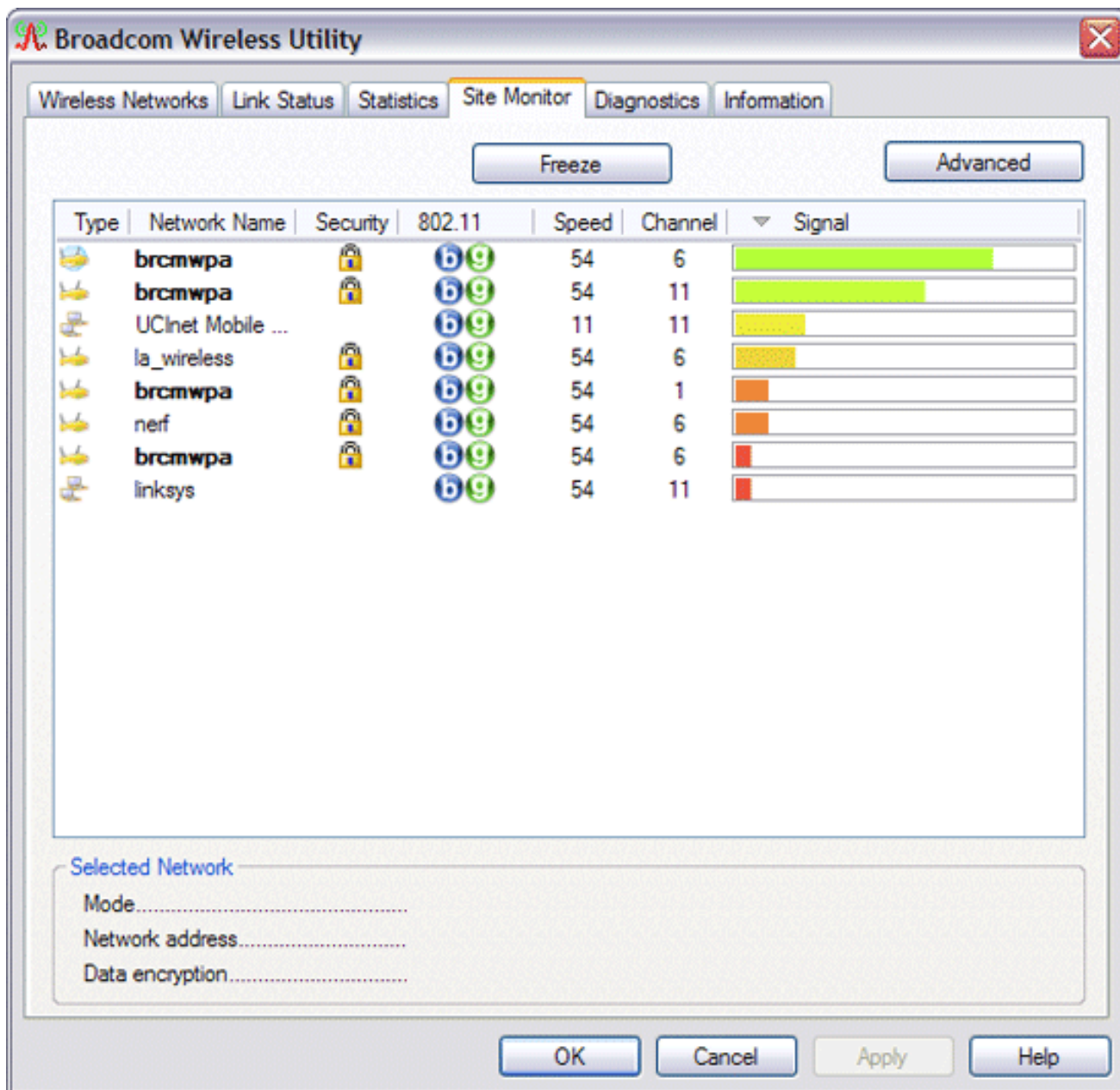
To view information about a particular wireless router/AP or ad hoc network, click anywhere in the row that lists the wireless router/AP or ad hoc network. The network information is shown under Selected Network. To view or change the network connection settings for a particular wireless router/AP or ad hoc network, right-click anywhere in the row that lists the wireless router/AP or ad hoc network, and then click **Edit**—if you have not yet created a network connection profile for that particular wireless router/AP or ad hoc network and want to do so, click **Add**.

To see the information elements for a listed AP or ad hoc network, right-click anywhere in the row that lists the AP or ad hoc network, and then click **Show Information Elements**.

**NOTES:**

- Nonbroadcasting networks are labeled (nonbroadcasting) under Network Name.
- The network performance may be degraded while Site Monitor is displaying nonbroadcasting APs to which you are not currently connected.
- The symbols under AP Band indicate IEEE 802.11a, IEEE 802.11b, IEEE 802.11g, or IEEE 802.11n operation.


To see more detailed information about a particular wireless router/AP or ad hoc network, click anywhere in the row that lists the wireless router/AP or ad hoc network, and then click **Advanced**.



Advanced Site Monitor

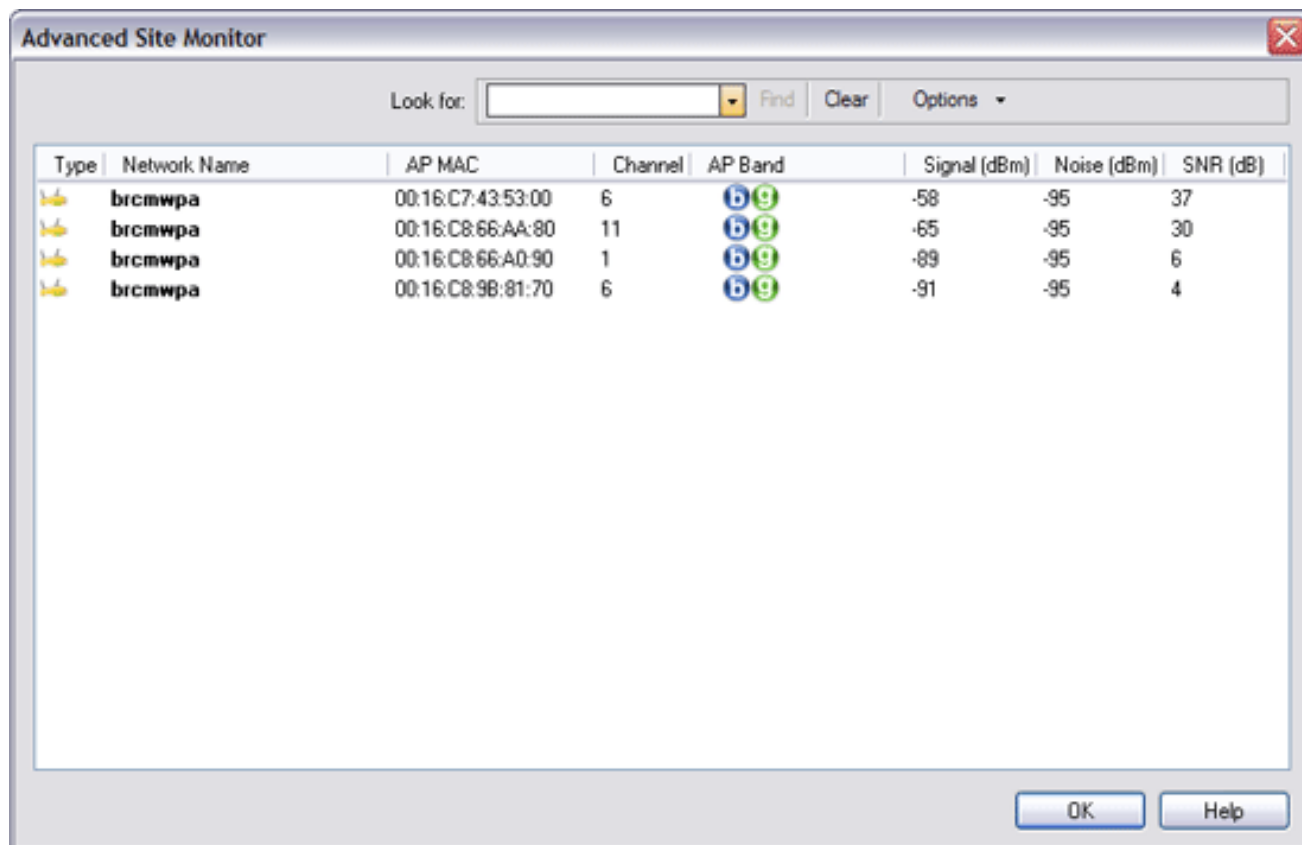
To save the activity log to a file, click the **Options** arrow, and then click **Start Log**.

You can adjust the time interval between scans by clicking the **Options** arrow, and then clicking either one of the preset values or clicking **Customize** to specify a different time interval.

 **NOTE:** The network performance may be degraded while Site Monitor is displaying nonbroadcasting networks to which you are not currently connected.


To view detailed network information for a single [nonbroadcasting network](#), type *the network name* in the **Look for** box, and then click **Find**.

To reset the site monitor to the broadcasting networks, click **Clear**.



Diagnostics

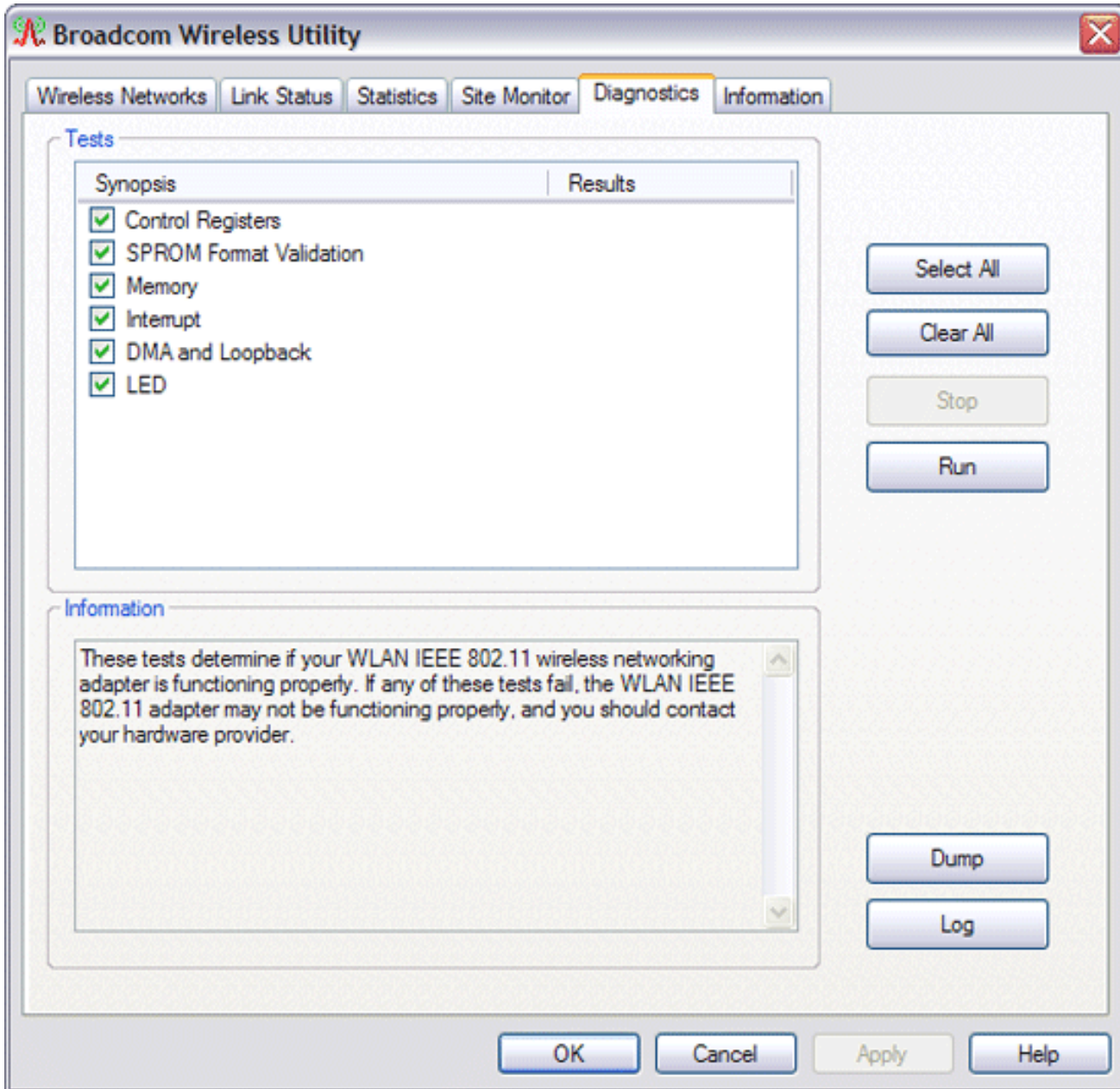
On the **Diagnostics** tab, you can run a number of tests to determine if your wireless network adapter is functioning properly. Select the tests you want to run, and then click **Run**. For information about an individual test, look under **Information** before you click **Run**. To see the test results, look under **Information** after you click **Run**.

 **NOTE:** The network connection is lost when you run the tests. When the test run is over, your network connection is automatically reestablished.

Also, you can view a log of your wireless network events. To do so, click **Log**.

Examples of wireless network events that are logged include:

- Initiation of user session
- Connecting to a network
- Disconnecting from current network
- Authentication mode being used
- Driver status
- Supplicant status
- New wireless device available
- Initializing wireless state machine
- Wireless utility is managing this adapter
- Wireless utility is not managing this adapter



If your Broadcom 802.11 Network Adapter fails any of the diagnostics tests, go to <http://www.broadcom.com/> for technical support.

Using the Broadcom BT Utility: Quick Start Guide

Step 1: Installing the Software

NOTE: This installation is required before you insert the module into the USB port of your computer.

1. Insert the Bluetooth USB Module installation compact disc (CD) into the CD-ROM or DVD drive of your computer.
2. If the Main Menu screen appears automatically, select Install software and click OK. If the Main Menu screen does not appear automatically, click Start, click Run, type x:\setup.exe (where x is the CD-ROM or DVD drive letter of your computer), and click OK.
3. Click Next, click Finish, and then restart your computer.
4. Right-click the Bluetooth icon in the taskbar notification area (system tray) and click Start Using Bluetooth. Follow the instructions provided by the Initial Bluetooth Configuration Wizard.

Step 2: Inserting the Module

Make sure that the Bluetooth USB Module is properly inserted inside your computer. If you started at **Step 1: Installing the Software**

The **Found New Hardware Wizard** detects and installs the device. When the installation is finished, you are ready to begin using the Bluetooth features of this computer.

If you skipped **Step 1: Installing the Software**, you are ready to begin using the Bluetooth features of this computer.

NOTE: Before you begin, however, please review the Bluetooth USB Module User's Guide. This document provides important information and instructions that will help you do the things you want to do with your Bluetooth enabled computer.

Glossary

Authentication A Bluetooth security feature that is used to verify identity; it requires a Bluetooth PIN Code from the remote device.

Authorization A Yes-or-No Bluetooth security feature that requires operator intervention to avoid having the connection time out and fail.

Bluetooth device Bluetooth enabled hardware such as a computer, printer, fax, mouse, keyboard, cell phone, headset, or PDA.

Regulatory Statements for BCM943228Z

Please refer to Broadcom OEM installation guide