



Dell™ LOB™ Latitude XT2 Setup and Features Information



- | | | | |
|---|------------------------------------------------------------------|---|----------------------|
| 1 | grip | 2 | display |
| 3 | ambient light sensor (with Dual-bulb CCFL LCD option only) | 4 | device status lights |

Month 2008



Model PP12S

- | | | | |
|----|---------------------------------|----|------------------------------------|
| 5 | digital array microphone | 6 | keyboard |
| 7 | AC adapter connector | 8 | USB connectors (2) |
| 9 | track stick buttons | 10 | keyboard |
| 11 | track stick | 12 | rotating hinge |
| 13 | digital array microphone | 14 | power button |
| 15 | Windows® security button | 16 | screen rotate button |
| 17 | QuickSet tablet settings button | 18 | e-mail application shortcut button |

Left Side View



- | | | | |
|---|-------------------------------|---|---------------------|
| 1 | pen indicator LED | 2 | pen |
| 3 | external wireless WAN antenna | 4 | IEEE 1394 connector |

NOTE: The external antenna is provided with WWAN cards only and is not included in the standard computer configuration. The computer comes with a plug that you need to remove prior to installing the antenna and WWAN card.

- | | | | |
|---|---------------|---|----------|
| 5 | USB connector | 6 | air vent |
| 7 | speaker | | |

Right Side View



- | | | | |
|---|-------------------------------|---|-----------------------|
| 1 | wireless radio on/off switch | 2 | Wi-Fi Catcher™ button |
| 3 | USB connector | 4 | ExpressCard slot |
| 5 | Secure Digital (SD) card slot | 6 | headphones connector |
| 7 | microphone connector | 8 | security cable slot |

Back View



- | | | | |
|---|----------------------|---|-----------------------|
| 1 | AC adapter connector | 2 | video connector |
| 3 | tablet back button | 4 | scroll control button |

- | | | | |
|---|-------------------|---|-----------------------|
| 5 | network connector | 6 | powered USB connector |
| 7 | rotating hinge | 8 | tablet grip |
| 9 | pen tether slot | | |



WARNING: Do not block, push objects into, or allow dust to accumulate in the air vents. Do not store your Dell™ computer in a low-airflow environment, such as a closed briefcase, while it is running. Restricting the airflow can damage the computer or cause a fire. The computer turns on the fan when the computer gets hot. Fan noise is normal and does not indicate a problem with the fan or the computer.

Quick Setup



WARNING: Before you begin any of the procedures in this section, read the safety information that shipped with your computer. For additional best practices information see www.dell.com/regulatory_compliance.



WARNING: The AC adapter works with electrical outlets worldwide. However, power connectors and power strips vary among countries. Using an incompatible cable or improperly connecting the cable to the power strip or electrical outlet may cause fire or equipment damage.

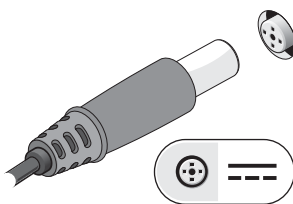


CAUTION: When you disconnect the AC adapter cable from the computer, grasp the connector, not the cable itself, and pull firmly but gently to avoid damaging the cable. When you wrap the AC adapter cable, ensure that you follow the angle of the connector on the AC adapter to avoid damaging the cable.

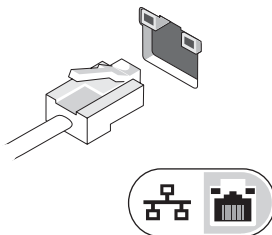


NOTE: Some devices may not be included if you did not order them.

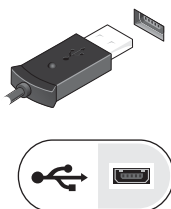
- 1 Connect the AC adapter to the AC adapter connector on the computer and to the electrical outlet.



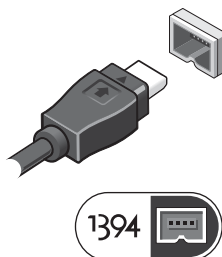
- 2 Connect the network cable.



- 3** Connect USB devices, such as a mouse or keyboard.



- 4** Connect IEEE 1394 devices, such as a DVD player.



- 5** Open the computer display and press the power button to turn on the computer.



Power button



Battery charge indicator.



NOTE: It is recommended that you turn on and shut down your computer at least once before you install any cards or connect the computer to a docking device or other external device, such as a printer.

Specifications



NOTE: Offerings may vary by region. For more information regarding the configuration of your computer, click **Start→Help and Support** and select the option to view information about your computer.

| | |
|------------------|--------------------------------------------------|
| Video | |
| Video type: | integrated on system board, hardware accelerated |
| Data bus | integrated video |
| Video controller | Intel Integrated "Cantiga" UMA Graphics |
| Video memory | up to 256 MB shared video memory |

| | |
|--------------------|----------------------------------------------------------------------------|
| Battery | |
| Type | 4-cell "smart" lithium ion (28 WHr) 6-cell "smart" lithium ion (42 WHr) |
| Dimensions: | |
| Depth | 96.84 mm (3.81 inches) |
| Height | 13.7 mm (0.54 inch) |
| Weight | 0.26 kg (0.57 lb) (4 cell) 0.34 kg (0.74 lb) (6 cell) |
| Voltage | 11.1 VDC |
| Temperature range: | |
| Operating | 0° to 35°C (32° to 95°F) |
| Storage | -40° to 65°C (-40° to 149°F) |
| Coin-cell battery | CR-2032 |

| | |
|-------------------------|----------------------------------------------------------|
| AC Adapter | |
| Input voltage | 90–264 VAC |
| Input current (maximum) | 1.1 A |
| Input frequency | 47–63 Hz |
| Output current | 3.3 A (maximum at 4-second pulse); 2.3 A (continuous) |
| Output power | 45 W, 65W(optional) or 90W(optional) |
| Rated output voltage | 19.5 VDC |

AC Adapter *(continued)*

Dimensions:

| | |
|--------|-----------------------|
| Height | 16.0 mm (0.63 inches) |
| Width | 63.0mm (2.48 inches) |
| Depth | 88.0 mm (3.46 inches) |

Temperature range:

| | |
|-----------|------------------------------|
| Operating | 0° to 40°C (32° to 104°F) |
| Storage | -10° to 70°C (-50° to 158°F) |

Physical

| | |
|--------|------------------------------------------------------------------------------------------------------------------------------------------|
| Height | 25.4 mm (1.0 inch) |
| Width | 297.0 mm (11.7 inches) |
| Depth | 218.6 mm (8.6 inches) |
| Weight | 1.62 kg (3.57 lb) (with 4-cell battery/LED standard configuration) 1.93 kg (4.25 lb) (with 6-cell battery/DLV standard configuration) |

Environmental

Temperature range:

| | |
|-----------|------------------------------|
| Operating | 0° to 35°C (32° to 95°F) |
| Storage | -40° to 65°C (-40° to 149°F) |

Relative humidity (maximum):

| | |
|-----------|----------------------------|
| Operating | 10% to 90% (noncondensing) |
| Storage | 5% to 95% (noncondensing) |

Altitude (maximum):

| | |
|-----------|--------------------------------------|
| Operating | -15.2 to 3048 m (-50 to 10,000 ft) |
| Storage | -15.2 to 10,668 m (-50 to 35,000 ft) |

Finding Information



NOTE: Some features or media may be optional and may not ship with your computer. Some features or media may not be available in certain countries.

**NOTE:** Additional information may ship with your computer.

| Document/Media/Label | Contents |
|-------------------------------------------------------------------------------------------------------------------------------------------------------------------------------------------------------------------------------------------------------------------------------------------------------------|----------------------------------------------------------------------------------------------------------------------------------------------------------------------------------------------------------------------------------------------------------------------------------------------------------------------------------------------------------------------------------------------------------------------------------------------------------------------------------------------------------------------------|
| Service Tag/Express Service Code The Service Tag/Express Service Code is located on your computer. | <ul style="list-style-type: none"> • Use the Service Tag to identify your computer when you use support.dell.com or contact support. • Enter the Express Service Code to direct your call when contacting support NOTE: Your Service Tag/Express Service Code is located on your computer. |
| Drivers and Utilities Media The <i>Drivers and Utilities</i> media is a CD or DVD that may have shipped with your computer. | <ul style="list-style-type: none"> • A diagnostic program for your computer • Drivers for your computer NOTE: Drivers and documentation updates can be found at support.dell.com . <ul style="list-style-type: none"> • Notebook System Software (NSS) NOTE: Readme files may be included on your media to provide last-minute updates about technical changes to your computer or advanced technical-reference material for technicians or experienced users. |
| Operating System Media The <i>Operating System</i> media is a CD or DVD that may have shipped with your computer. | Reinstall your operating system |
| Safety, Regulatory, Warranty, and Support Documentation This type of information may have shipped with your computer. For additional regulatory information, see the Regulatory Compliance Homepage on www.dell.com at the following location: www.dell.com/regulatory_compliance . | <ul style="list-style-type: none"> • Warranty information • Terms and Conditions (U.S. only) • Safety instructions • Regulatory information • Ergonomics information • End User License Agreement |
| Service Manual The <i>Service Manual</i> for your computer can be found at support.dell.com . | <ul style="list-style-type: none"> • How to remove and replace parts • How to configure system settings • How to troubleshoot and solve problems |

| Document/Media/Label | Contents |
|------------------------------------------------------------------------------------------------------------------------------------|--------------------------------------------------------------------------------------------------------------------------------------------------------------------------------------------------------------------------------------------------|
| Dell Technology Guide The <i>Dell Technology Guide</i> is available at support.dell.com . | <ul style="list-style-type: none">• About your operating system• Using and maintaining devices• Understanding technologies such as RAID, Internet, Bluetooth® wireless technology, e-mail, networking, and more. |
| Microsoft® Windows® License Label Your Microsoft Windows License is located on your computer. | <ul style="list-style-type: none">• Provides your operating system product key. |



WARNING: A WARNING indicates a potential for property damage, personal injury, or death.



CAUTION: A CAUTION indicates potential damage to hardware or loss of data if instructions are not followed.

Information in this document is subject to change without notice.

© 2008 Dell Inc. All rights reserved. Printed in the U.S.A.

Reproduction of these materials in any manner whatsoever without the written permission of Dell Inc. is strictly forbidden.

Trademarks used in this text: *Dell*, *Latitude*, *OptiPlex*, *Dell Precision*, *Vostro*, *Wi-Fi Catcher*, and the *DELL* logo are trademarks of Dell Inc.; *Intel* is a registered trademark of Intel Corporation in the U.S. and other countries; *Microsoft*, *Windows*, and *Windows Vista* are either trademarks or registered trademarks of Microsoft Corporation in the United States and/or other countries.

Other trademarks and trade names may be used in this document to refer to either the entities claiming the marks and names or their products. Dell Inc. disclaims any proprietary interest in trademarks and trade names other than its own.

