

# DIGITAL AUDIO PLAYER

## User's Guide



Copyright © 2005 EZMAX. All rights reserved.

Advance permission of EZMAX is required to use User's Guide, photos, the related documents and software of the product. Any violation may follow the legal measures.

The contents of the User's Guide are subject to change without prior notice for further improvement of the product.

**EZMAX**

<http://www.ezmax.co.kr>

## Table of Contents

### Before Use

Product & Accessories .....	2
PC System Requirements .....	3
Safety Precautions .....	4
Features .....	5

### Designation of Parts

Front/Rear View of the Product .....	7
Side View of the Product .....	8
Function Icons in Display .....	9

### Preparation

Installing USB Driver .....	10
Connecting Player to PC .....	12
Manually Installing USB Driver .....	13
Using Removable Disk .....	16
Disconnecting USB Cable .....	19
Upgrading Firmware .....	21
Installing LDB Manager .....	23
Using LDB Manager .....	24

### Basic Functions

Basic Operation .....	29
Power On/Off .....	32
Playback Music File .....	33

Using Navigation .....	36
Voice Recording/Listening .....	37
MP3 Encoding/Listening .....	38
Listening to FM Radio .....	41
Recording/Playback FM Radio .....	45

### Function Menu

Menu Setting .....	46
Music File Playback .....	47
Managing File .....	48
Detailed Menu Setting .....	51
Playback Mode Setting .....	52
Sound Setting .....	53
Display Setting .....	55
Timer Setting .....	57
Encoding Setting .....	59
Setting .....	60

### Others

About Battery .....	63
HOLD Setting Method .....	64
Troubleshooting .....	65
Specifications .....	67
Service (A/S) .....	68
Warranty .....	69

## Products & Accessories



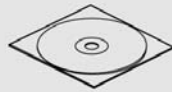
MP3 Player



Earphone



User's Guide



Program CD



USB Cable



USB Adaptor



Line in Cable



Necklace



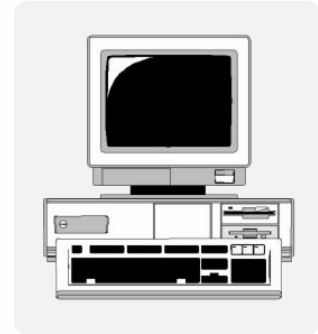
Carrying Case

**!NOTE:** Accessories are subject to change without a prior notice for further improvements in of this product.

## PC System Requirements

Basic requirements should be satisfied to use this player on your PC.  
Make sure to check the following recommendations before its use:

- Pentium 200MHZ or above
- Windows 98SE / ME / 2000 / XP  
(Windows 98SE - Install Driver)
- Mac OS 9.0 / 10.0
- USB Port (2.0 supported)  
(Requires PC with a capacity of more than PentiumIII 1GHZ. Couldn't be supported depending on a mainboard. Isn't supported without Service Pack 1 under Windows XP.)
- CD-ROM Drive
- Hard Disc Space 20MB or above  
(an additional capacity may be required to save the music files.)
- 64MB RAM or above



**!NOTE:** Memory spaces available may be less than those indicated above since the firmware uses some portions of the memory available to your PC for the operation by its system.

## Safety Precautions

### Listening Cautions...

The output of the product guarantees the best sounds at its proper volume. As listening with a volume set at a high position for a long time may damage your sense of hearing, make sure to listen to the music at a proper volume.

### Avoid Strong Impact or Vibration

Be careful in handling the product and its accessories since their falling on the floor or giving an impact on them may result in their serious damages.

### Storage

Avoid the places exposed to heat, humidity or magnetic field

### Cleaning

Wiping the player with chemicals may result in discolorations or damages on its surface.

Wipe out the player with a soft cloth.

### Using the Battery...

If you do not use the Player for a long time, do not insert a battery in the Player.

**!NOTE:** Never try to disassemble, repair or remodel it.

## Features

### Multi-Codec Player

Multi-codec player supporting MP3, WMA, ASF(audio), OGG, WAV format.

### FM Transmitter Function(My FM Station)

If you select the embedded FM Transmitter mode, you can enjoy a high sensitivity of music wireless through device with FM radio(ex. Car audio, home audio, ordinary FM radio).

### High Quality 3D Sound, MEX (Magic EXpander)

Experience a profound sound due to an introduction of MEX which allows you to feel 3D expansion effects with richness while keeping the original and stable sound of the player. 3D Sound MEX is a new 3D effect that does not make you feel tired even if you listen to it for a long time.

### EL Display

With its introduction of Blue/Yellow 2 Color EL Screen Graphic Display, the player can command more luxurious and fancy images.

### Firmware Upgrade

Upgrade Firmware to add/change/improve functions and performance of the Player. Always enjoy the music with its latest version of performance.

### Voice Recording

A function of high quality voice recording allows a clear recording for conferences and lectures.

## Features

### FM Radio

Conveniently enjoy the FM radio with a variety of functions such as the manual/automatic frequency search, automatic tune to the radio station, and the station preset.

### Easy Navigation

Tree structure allows you to manage and search a specific song more conveniently.

### Lyric Display(LDB)

You can easily edit, save and display the lyrics of a song in 3 lines on the large display.

### 6 Preset Equalizer

You can produce your own sound quality with the 5-band User EQ and 5 recommend EQs including Normal, Classic, Pop, Rock and Jazz.

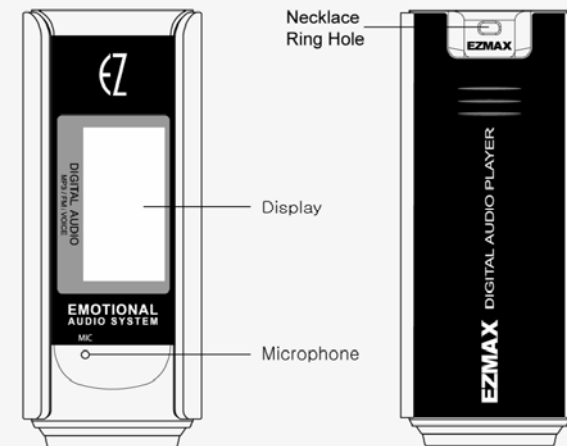
### Removable Disk Device

You can freely upload and download files without a separate manager program since the player is recognized as a removable disk when it is connected to the PC.

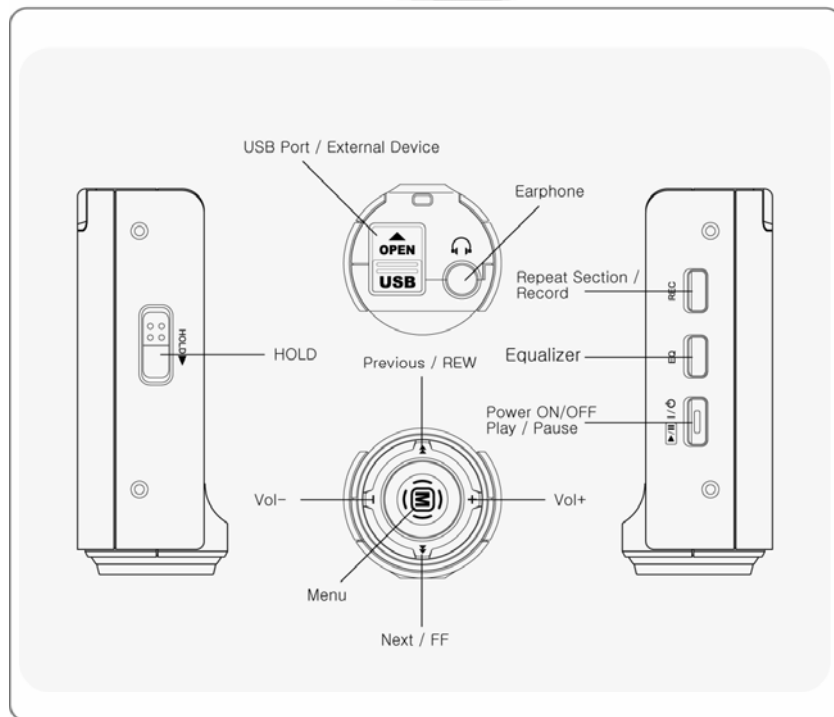
### Direct Encoding

You can record an external sound you hear through LINE-IN port of the player, as from FM radio broadcasting.

## Front/Rear View of the Product

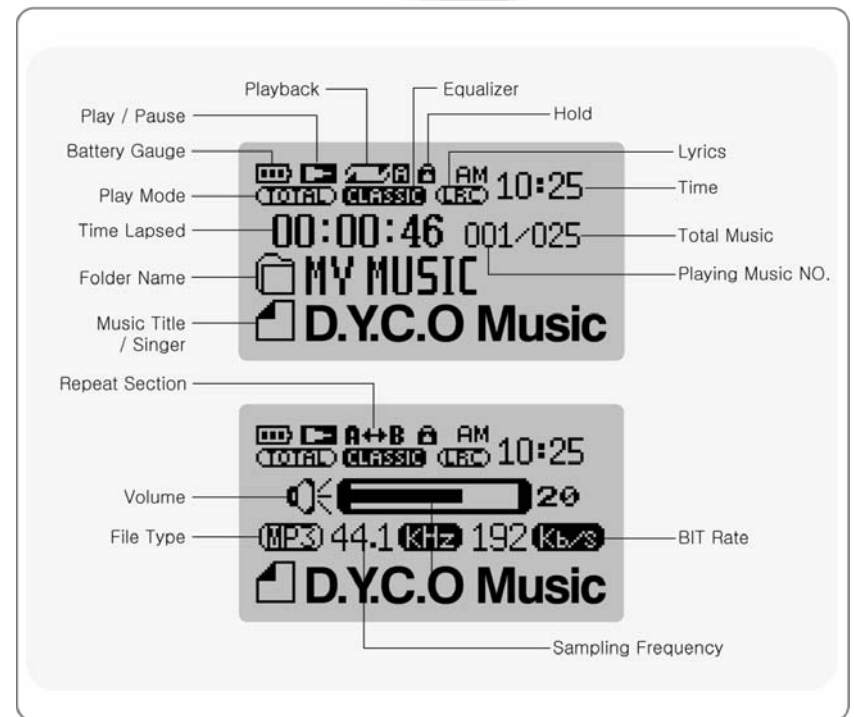


## Side View of the Product



8

## Function Icons in Display



9

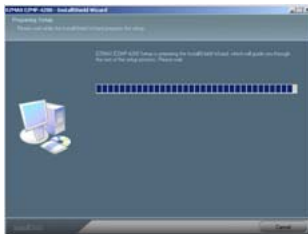
## Installing USB Driver

Make sure to install the USB driver before connecting it to the PC.  
When there appears "Add New Hardware Wizard", press the "Cancel" button and install Upgrade Manager.  
If you install Upgrade Manager, the USB driver will be automatically installed.

- ▶ The driver is recognized without installation of a separate program under Windows ME, 2000, XP, but make sure to install it if Firmware Upgrade is required.
- ▶ If Upgrade Manager is not installed under Windows 98 SE, the player cannot be recognized as a removable disk. Make sure to install Upgrade Manager.

**1** Insert Installation CD into CD-ROM Drive and then click setup.exe in the folder of Upgrade Manager.

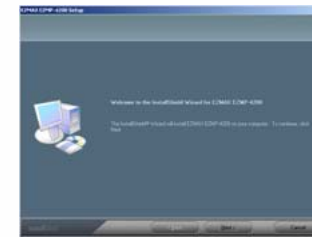
**2** The installation will start.



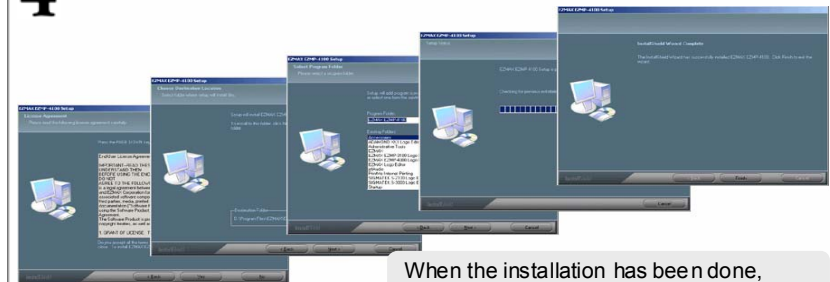
10

## Installing USB Driver

**3** Click "Next".



**4** Click 'Next' or 'Yes' in subsequent windows.



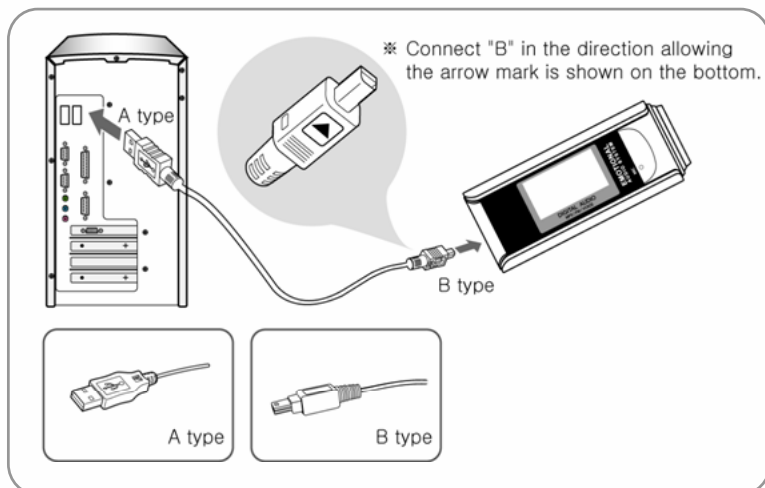
When the installation has been done, connect it to the PC as shown in the next page.

11

## Connecting Player to PC

To download music files (MP3/WMA/ASF/OGG) from the PC, use USB cable to connect the MP3 Player to the USB port of the PC.

**(Make sure to use only USB cable supplied with the MP3 Player.)**



Connect 'A' of the cable to the USB port on the part of the PC.  
Open the cover of the USB port on the part of the player and connect 'B'(a smaller part) of the cable to the USB port.

## Manually Installing USB

**Install the USB driver in the following way when it is not recognized as a removable disk.**

If there doesn't appear "EZMAX EZMP-4200 USB Device" in "Disk Drive" of Device Manager or "USB Mass Storage Device" (Except Window 98SE) in Universal Serial Bus Controller, or if there does a yellow exclamation mark or "Unknown Device", the driver has not been properly installed. In this case, manually install the driver.

### If an error has occurred while installing USB driver

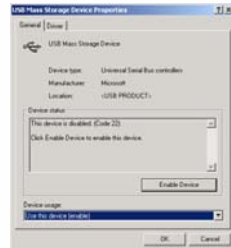
- 1** Check Device Manager.
  - Windows 98SE/ME  
Control Panel→System→Device Manager
  - Windows 2000 (Professional )  
Control Panel→System→Hardware  
→Device Manager
  - Windows XP (Professional )  
Control Panel→Performance and  
Maintenance→System  
→Hardware→Device Manager



- 2** Check whether there are any device with a exclamation mark or question mark(unknown device or USB device) in Device Manager.

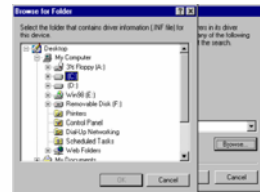
## Manually Installing USB

3 Double click the device with a exclamation or question mark.



4 Press "Install Driver Again"..

5 Click 'Next' in the subsequent windows. When searching driver files as shown below, click the "Browse" to select C:\Winnt\Inf or C:\Windows\Inf and press "OK".

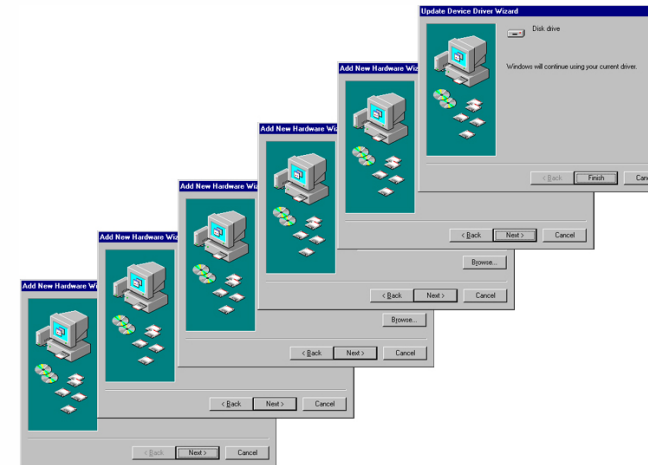


6 Press "Next": in the subsequent windows to complete the installation of the USB driver.

## Manually Installing USB (Win 98SE)

### For Windows 98SE

Click 'Next' in the subsequent windows.  
Designate the path for searching the driver file to **Upgrade Manager\Drivers of CD Drive**.



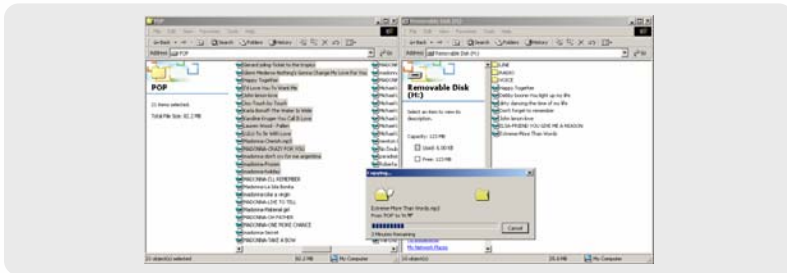
**Make sure to restart your system after installation is completed.**



## Using Removable Disk

Since the player is detected as a removable disk on the part of PC, you can easily upload, download, or delete music files or folders in Windows Explorer without a separate manager program.

- 1** Copying files to Player(Download)
  - 1) When you connect the player to the USB cable, it is recognized as a removable disk in Windows Explorer.
  - 2) Click the removable disk to enter into a memory area of the player.
  - 3) Run one more Windows explorer.



- 4) Select the file to save,
  - ① Drag and drop it to the removable disk.
  - ② Or, right-click to select Copy. Designate the removable disk and right-click to select Paste.
- 5) Then, there will appear a file transfers window, indicating that the file is being copied to the removable disk.

## Using Removable Disk

- 2** Export File(Upload)
  - 1) Connecting the USB cable to the Player allows the Player to be recognized as a removable disk in the Windows Explorer.
  - 2) Select the removable disk to have access to the memory area of the Player.
  - 3) Run one more Windows Explorer.
  - 4) Select a file you want to export from the removable disk, and then:
    - ① Drag & drop to the disk to which you want to export.
    - ② Or right-click the mouse to select Copy, and select a folder to which you want to export, and then right-click the mouse to select Paste.

- 3** You can add or delete a folder in the Windows Explorer.

When you download a music file to the player, wait until there appears **Ready** on the display as shown below. If you disconnect the USB cable during **DOWNLOAD** or **UPLOAD**, the file may not be properly downloaded. Check the display(READY) and then disconnect the cable.



## Using Removable Disk

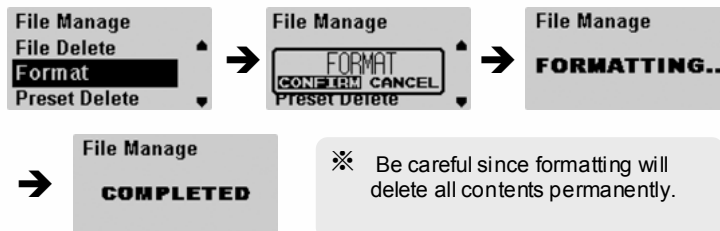
### 4 Format Player

#### 1) Formatting in the Windows

- ① Select the removable disk, and then right-click the mouse to select Format (Select "FAT" as a file system).
- ② Click Start. (If you remove the USB cable while formatting, the player could be damaged. Be sure to remove it after the formatting has been done.)

#### 2) Formatting in the Player

- ① Press the MENU button to enter into the menu mode.
- ② Select the File Manager with **⏮** **⏭** button and then press the MENU button to enter into File Manage menu.
- ③ Select Format menu with VOL +/- button and then press the MENU button.
- ④ After selecting "Confirm", press the MENU button one more to start formatting.



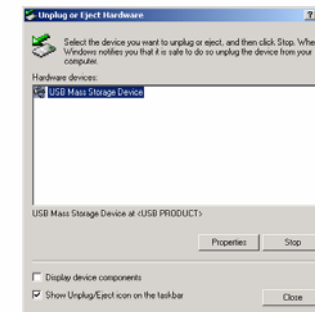
## Disconnecting USB Cable

After completing file transfer, disconnect the USB cable in the following way.

- 1 Right-click the removable hardware icon on the taskbar of the desktop, and then select "Remove Hardware Safely".



- 2 After selecting the device to disconnect, click "Stop".



## Disconnecting USB Cable

- 3 Click "OK" to confirm the device to stop.



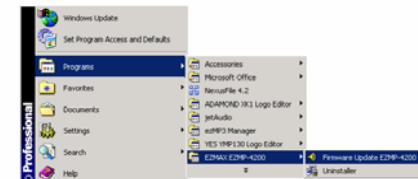
- 4 Click "OK" to remove USB cable.



※ Abnormally disconnecting the USB cable may result in damages or a failure to the player.  
The order of music files that appears when you select a removable disk in Windows Explorer has nothing to do with the actual sequence in accordance with the playback.

## Upgrading Firmware

- 1 Download the latest version of firmware at our website ([www.ezmax.co.kr](http://www.ezmax.co.kr)) and unzip it (unzipped to 4 files.)
- 2 Copy the unzipped latest firmware files into C:\Program Files\EZMAX\EZMP-4200 folder.
- 3 Connect the USB port in the status of Power-off so that the PC can recognize the player.
- 4 Execute Firmware Upgrade manager program.

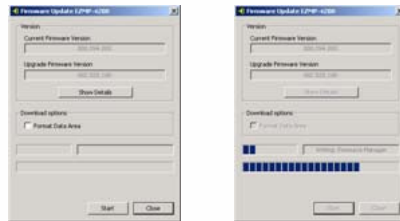


- 5 Wait for the device to search. Connect USB cable.



## Upgrading Firmware

- 6 Click "Start" to proceed Firmware Upgrade. Select "Data Area Formatting" to delete all the files in the system. Disconnecting the USB cable during Firmware Upgrade may result in malfunctions of the player or the PC.



- 7 When the firmware upgrade has been completed, click "Close" and remove the USB cable (Refer to Disconnecting USB Cable).



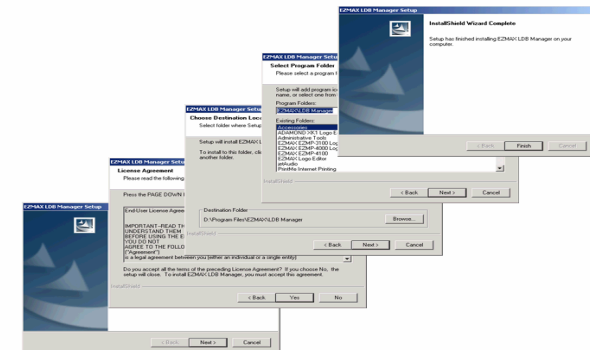
22

## Installing LDB Manager

- 1 Insert the Installation CD into CD-ROM Drive and click setup.exe in the folder of LDB Manager.
- 2 Select a language to use.



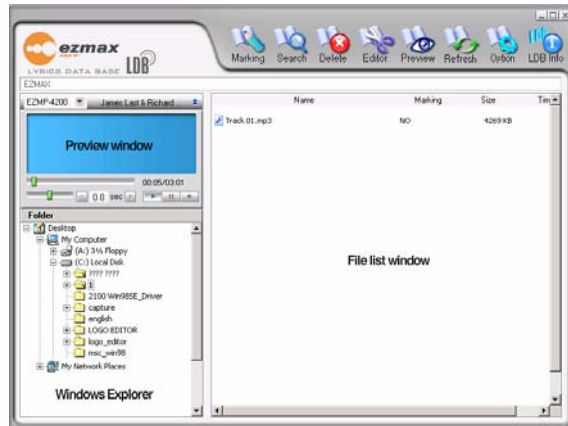
- 3 Click "Next" or "Yes" in the subsequent windows.



23

## Using LDB Manager

LDB Manager is a program that automatically enters the lyrics in MP3 music files and can be used without connecting the player to PC.




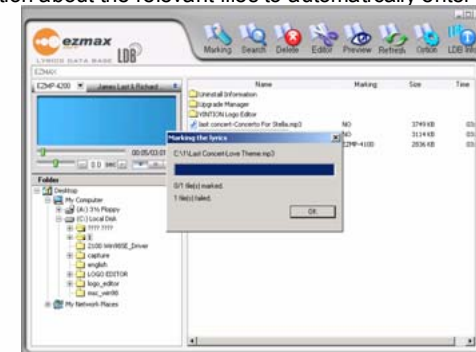
- The Internet should be available so that it can get information about a lyric from the lyric server.
- Lyrics are not marked for the VBR file since time information does not match.

24

## Using LDB Manager

### 1 Enter Lyrics(Auto Search)

- ① Select the MP 3 file to enter the lyrics in the file list window, and press "Enter Lyrics"  on the top menu.
- ② The lyric server searches for information about the lyrics according to information about the relevant files to automatically enter the lyrics.




- ③ After the lyrics have been entered in, you can check the lyric marking information is displayed in the file list window.
- ④ Play back in the preview window to check information about the lyrics.

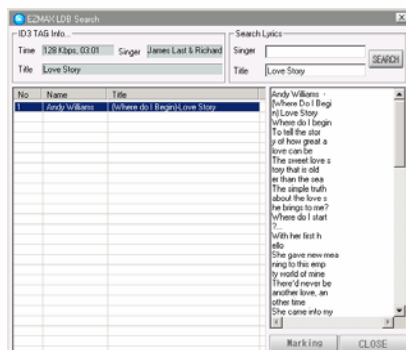


25

## Using LDB Manager

### 2 Enter Lyrics (Manual Search)

- 1 Select the file to enter the lyrics and click the  button on the top menu.
- 2 Enter the name of singer or title of song to search for in Enter & Search Lyric window and press the Search button.
- 3 The songs matching the time information, singer information and title will be displayed.  
Click the MP3 file to check the lyrics to enter in the right window.




- 4 Press the Lyrics Marking button on the right bottom of the LDB search window to complete entering the lyrics.


26

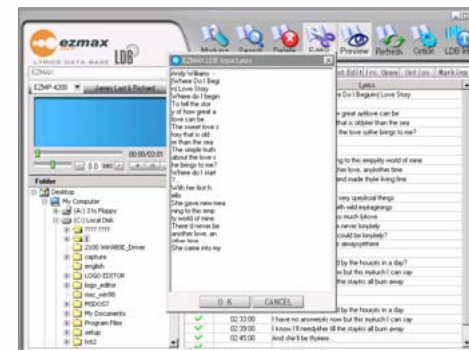
## Using LDB Manager

### 3 Delete Lyrics

Select the MP3 file to delete lyrics and press the  button to delete their information.

### 4 Manually Enter Lyrics

- 1 Select the file to enter the lyrics and press the  button on the top menu.
- 2 Press Text Editor, enter the lyrics you want and then click OK.



27


## Using LDB Manager

- ③ Press Playback in the preview window and press the SYNC setting button at the point where there should appear one line of lyrics editing window.

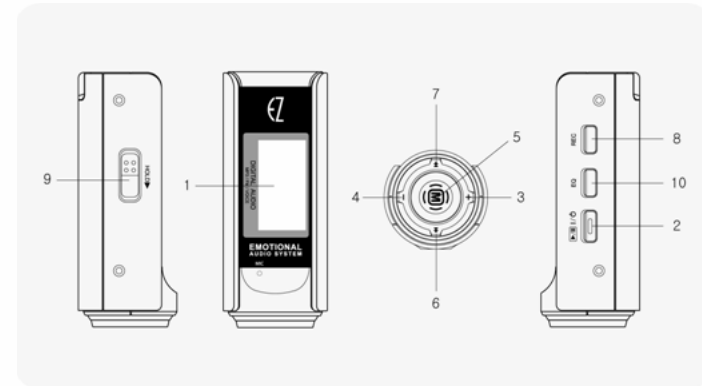


- ④ When SYNC setting has been completed, press the Lyrics Marking window.

## 5 Modify Lyrics

- ① Select the MP3 file to modify lyrics and then press the  button.
- ② Double click the area to modify lyrics so that you can modify the lyrics or time.

## Basic Operation



- 1 Display**
  - Displays the operating status of the product..
- 2 PLAY**
  - Press short to turn the power ON.
  - When listening to the music or the recorded file, press short to pause the music, and then do so again to resume the music.
  - When listening to the FM radio broadcasting, press short to save the current station to the PRESET.
  - In any mode, press and hold to turn the power OFF.

## Basic Operation

### 3 VOL +

- Each press on the button will increase the volume step by step. (can be adjusted in 0-30 levels..)

### 4 VOL -

- Each press on the button will decrease the volume step by step.

### 5 MENU

- Press short to enter into the menu screen.
- Press and hold to enter into the navigation screen.
- Press short to select the relevant item on the menu screen.

### 6 ►►

- When listening to a music or a recorded file, press short to move to the next music while keep pressing to fast move within the current played file.
- Press it short to move to the next menu screen.
- Press it short in FM radio mode to increase the radio frequency step by step, and press and hold to automatically search for the next broadcasting station.
- Press it to move to the next PRESET number in the FM PRESET mode.

### 7 ◀◀

- When listening to a music or a recorded file, press short to move to the previous music while keep pressing to fast move within the current played file.
- On the MENU screen, press short to move to the previous menu item.

## Basic Operation

- When listening to the FM radio, press short to move to the previous frequency while keep pressing to automatically search for the previous station.
- In the PRESET mode, press short to move to the next PRESET number.

### 8 REC/A-B

- During the playback, press short to specify the section 'A' and do so again to specify the section 'B' for the Repeat Section. And then another pressing short will cancel the Repeat Section.
- When listening to the FM radio, press and hold to record the radio station.
- Press and hold in the FM Radio mode to start FM broadcasting recording, and press and hold it again to complete recording.

### 9 HOLD

- In the HOLD status, operation of all buttons are locked down.
- If you press any button while it is in the HOLD status and the player is being played, it displays the message "HOLD", sticking to its previous status.
- If you press any button while it is in the HOLD status and the player is turned off, it displays the message "HOLD", sticking to its power-off status.

### 10 EQ

- You can orderly search for the effect of each EQ including that of 3D.
- Press in FM Radio mode to execute AUTO PRESET and to search for a radio frequency automatically.



## Power ON/OF

### Power ON

Press PLAY short to turn the power ON, and there will appear the logo on the display, followed by which there appears a version of firmware, a total memory and the memory available to the Player.



**NOTE:** A total of memory an initial booting shows may be less than its default memory since some part of it is used to drive the system by the firmware.

### Power Off

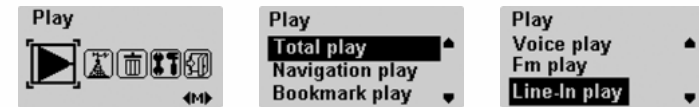
Press and hold PLAY to turn the power OFF while the logo GOODBYE is displayed. If you press PLAY during the playback, it will enter into its pause. It will be automatically released in the time you set in advance if you do not press any button.



## Playback Music File

- © You can play back a music file or files recorded in the player in the **PLAY** menu.

Press MENU short to move to the menu mode. Select the PLAY menu and press MENU again to move to the menu.



You can select TOTAL PLAY, NAVIGATION PLAY, BOOKMARK PLAY, VOICE PLAY, FM PLAY, LINE-IN PLAY using VOL+/- button. Press MENU to enter into a relevant playback mood.

### (1) TOTAL PLAY

- TOTAL PLAY plays back all music files in the memory.

### (2) NAVIGATION PLAY

- Press MENU to enter into NAVIGATION PLAY where you can see all the folders and music files in the memory.
- Select the folder or file you want to play back using the **⏮ ⏭** button.
- Press PLAY to play back the folder or file you have selected.

## Playback Music File

### (3) BOOKMARK PLAY

- Press MENU to enter into BOOKMARK PLAY where you can see the bookmark files.
- Press PLAY to play back BOOKMARK files alone.

- How to Set BOOKMARK
- While listening to music or in the pause status, press and hold MENU to enter into the NAVIGATION mode.
- Select the file for BOOKMARK and press MENU short to bookmark it. Another pressing it short to release the bookmark.



### (4) VOICE PLAY

- Plays back voice-recording files.

### (5) FM PLAY

- Plays back files in which FM radio broadcasting is recorded.

### (6) LINE-IN PLAY

- Plays back all files with LINE-IN encoded.

## Playback Music File

### Searching For File

During the playback, press the **⏮ ⏭** button to play back the previous/next file.

In the pause status, press the **⏮ ⏭** button to move to the previous/next file.  
(If a function of Study is set, it moves in accordance with the time you have set.)

### Searching for Part

During the playback, press and hold **⏮ ⏭** button to quickly move to the area you want. Release it to play back normally.

### Setting Repetition Section

During the playback of music/recorded files, press **REC/A-B** on the beginning of the section you want to listen to repeatedly.



Press **REC/A-B** again on the ending of the section.

The section will be repeatedly played back.

Press **REC/A-B** again to release the sectional repetition.

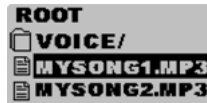
### Adjusting Volume

Press the VOL +/- button short to adjust by 1 level, and press and hold it to adjust continuously. The volume can be adjusted from 0 to 30 levels.

## Using Navigation

Use the function of Navigation to easily search for the file you want.

- 1 Press and hold MENU to move to the Navigation mode.



- 2 Select the folder or file you want to play back.
  - **⏮** button : move to a upper folder
  - **⏭** button : move to a lower folder
  - **VOL+/-** button : move to a file or a folder in the same folder
  - **MENU** button : move to a lower folder in the case of folder set BOOKMARK in the case of file



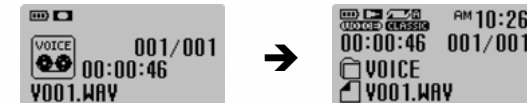
- 3 Press PLAY to play back a selected file.

※ Press and hold MENU in the Navigation mode to release.

## Voice Recording/Listening

### Recording Voice

During the playback or in the pause status, press and hold **REC** to record voice. Press it again to stop recording.

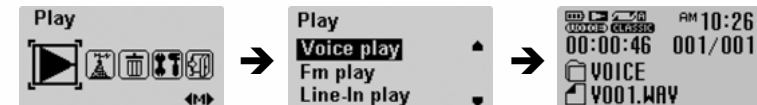


Press **PLAY** to listen to the voice file you have just recorded.

- It will be recorded in an order of V001, V002, ... and saved in the **VOICE** folder as WAV file after its recording.
- Voice recording will not work if it is in the **FM RADIO** mode or if the line-in cable is not connected.
- Voice recording will automatically stop if the memory is full.

### Listening to Voice Recording File

In the **PLAY** menu, select the **VOICE PLAY** using the **VOL+/-** button and press **PLAY** to play back the voice recording file.



## MP3 Encoding/Listening

One jack of the line-in shall be connected to the output port of an external acoustic unit, and the other jack(USB port) to the USB line-in port of the player.

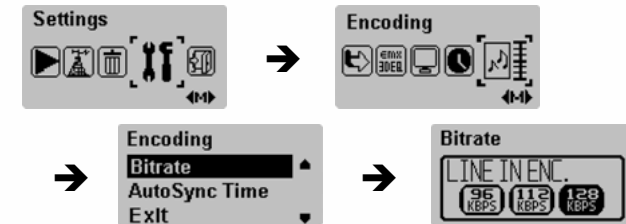


- Do not listen to FM during the recording from an external device since it may cause a noise.
- If you want to record from a home audio device, our line-in cable may not work, and you need to separately purchase a line-in cable.
- Encoding may not be performed if the line-In cable has not been connected.
- Encoding after setting the volume of an external audio device properly. Too high or low volume may deteriorate the encoding sound quality.

## MP3 Encoding/Listening

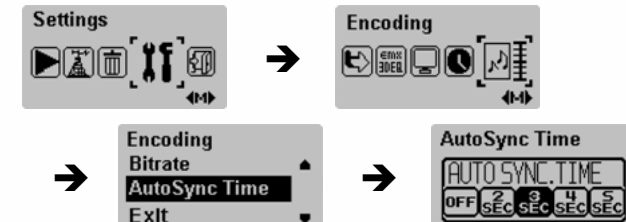
### Bit Rate Setting

In the MENU mode, use the MENU button and ◀▶ button to select SETTINGS → ENCODING → BITRATE and select one of 96/112/128kbps.



### Auto Sync. Setting

In the MENU mode, use the MENU button and ◀▶ button to select SETTINGS → ENCODING → AUTOSYNC TIME and select one of OFF/2/3/4/5 SEC.



## MP3 Encoding/Listening

### Encoding

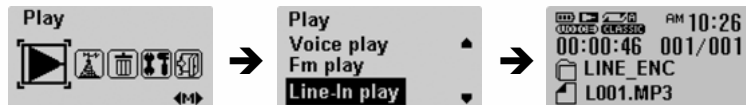
When the music for encoding is played back from an external device, press and hold the REC button on the part of the player to start encoding.  
Press and hold it again to stop encoding.



- It will be recorded in an order of L001, L002, L003,... and saved in the folder of LINE\_ENC as MP3 file after its recording.
- Encoding stops if you disconnect the line-in cable.
- Encoding may not work if there isn't sufficient in the battery gauge.

### Listening to Encoded Music File

In the PLAY menu, use the **VOL+/-** button to select LINE-IN PLAY and then press the **PLAY** button to play back encoded files.



## Listening to FM Radio

In the MENU mode, select FM RADIO menu and press the **MENU** button to move to FM RADIO mode.



- MONO/STEREO will be automatically selected.

### Manual Tune In

Press the **◀▶** button short to increase/decrease the frequency.



### Auto Tune In

Press and hold the **◀▶** button to tune in the frequency received.



## Listening to FM Radio

### Manually Save Frequency

After finding the frequency you want, press and hold the **MENU** button to display the frequency saving screen. Select the frequency saving number you want using the **◀▶** button and press the **MENU** button.



### Automatically Save Frequency

Press and hold the **EQ** button to save the frequency that is received from the first.



- Up to 20 frequency can be saved.
- The broadcasting status may not be smooth in the weak current area with weak reception sensitivity.
- Ear phone ring works as a FM radio antenna. Make sure to connect the earphone to the earphone jack when searching for the frequency.

## Listening to FM Radio

### Search for Saved Frequency(PRESET mode)

Press the **PLAY** button to display the PRESET screen. Move to the frequency you want using **◀▶** button. Press it again to hide the PRESET screen.



- **PRESET MODE** : it saves the frequencies in advance so that you don't have to search for frequency whenever you listen to FM radio.
- If there is no frequency saved, "NO PRESET NUMBER!" will be displayed.

### Delete Saved Frequency One by One

In the PRESET mode, press and hold the **◀▶** button to search for the frequency to delete, and then press and hold the **MENU** button.



## Listening to FM Radio

### Deleting All Saved Frequencies

In the MENU mode, select FILE MANAGE and press the MENU button.



Use the VOL+/- button to select the PRESET DELETE, and then press the MENU button again to delete all the frequencies saved.



- If all frequencies saved are deleted, and when you press the PLAY button, "NO PRESET NUMBER!" is displayed, not moved to the PRESET mode.

## Recording/Playback FM Radio

### Recording FM Radio

During the FM receiving, press and hold the REC button to start FM radio broadcasting.

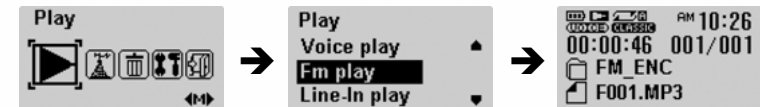


Press the REC button again to stop FM radio recording.

- It will be recorded in the order of F001, F002, F003,... and saved in the folder of FM\_ENC as MP3 file after its recording.
- Encoding may not work if there isn't sufficient in the battery gauge.

### Listening to Recorded FM Radio Broadcasting

In the PLAY menu, use the VOL+/-button to select FM PLAY, and then press the PLAY button to play back the recorded FM radio broadcasting.



## Menu Setting

Press the MENU button short to move to the MENU mode.

Press the ◀▶ button to move MENU item and press the MENU button short to select the menu you want.

Press and hold MENU button again to release MENU mode.



- **Play** : Select the MUSIC playback mode
- **FM Radio** : Listen to FM radio
- **File Manage** : Use such functions, as deleting or formatting a file, or deleting the preset
- **Settings** : Set the detailed settings
- **Exit** : Exit the menu

## Music File Playback

In the MENU mode, select the PLAY menu

<b>Play</b> Total play ▲ Navigation play ▼ Bookmark play ▼	Plays back all the music files in the memory.
<b>Play</b> Total play ▲ Navigation play ▼ Bookmark play ▼	Easily searches for and plays back a file or a folder.
<b>Play</b> Total play ▲ Navigation play ▼ Bookmark play ▼	Plays back bookmarked files alone.
<b>Play</b> Voice play ▲ Fm play ▼ Line-In play ▼	Plays back voice-recording file alone.
<b>Play</b> Voice play ▲ Fm play ▼ Line-In play ▼	Plays back only the files in which FM radio broadcasting is recorded.
<b>Play</b> Voice play ▲ Fm play ▼ Line-In play ▼	Plays back files encoded from an external device.



## Managing File

### Deleting File

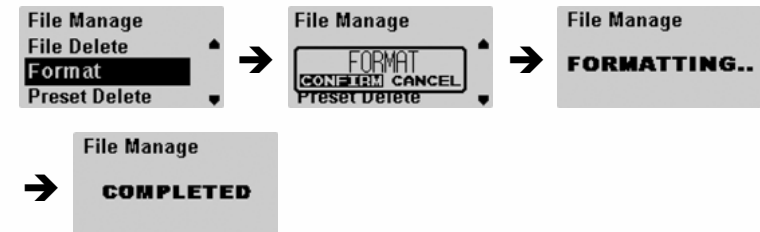
- 1 In the File Manage menu, select File Delete and press the MENU button.
- 2 Use the VOL+/- button to select the file to delete.
- 3 Press the MENU button.
- 4 Select CONFIRM with **⏮ ⏭** button and then press the MENU button.
- 5 Press the **⏮** button to move to the FILE MANAGE menu.



## Managing File

### Formatting

- 1 In the File Manage menu, select the Format and press the MENU button.
- 2 Select CONFIRM with **⏮ ⏭** button and press the MENU button.



- Be careful since formatting will delete all files.
- If you format in the menu, it may take long to complete.

## Managing File

### Deleting Saved FM Radio Frequency

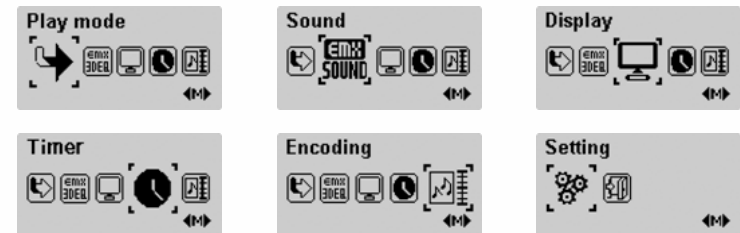
- 1 In the File Manage menu, select Preset Delete, and then press the MENU button.
- 2 Select CONFIRM with ◀▶ button, and press the MENU button.



## Detailed Menu Setting

- 1 In the MENU mode, select the Settings.
- 2 Select the detailed menu that you want to move using the ◀▶ button and then press the MENU button.

- Press the VOL+ button to move to an upper menu.



## Playback Mode Setting

Select the Play Mode in the Settings.

Play mode  
Normal ▲  
Repeat one ▼  
Repeat all ▼

Plays back all the songs in order only once

Play mode  
Normal ▲  
Repeat one ▼  
Repeat all ▼

Plays back only selected songs repeatedly.

Play mode  
Normal ▲  
Repeat one ▼  
Repeat all ▼

Plays back all the songs repeatedly in order.

Play mode  
Shuffle ▲  
Intro ▼  
Exit ▼

Randomly plays back all the songs in the memory repeatedly

Play mode  
Shuffle ▲  
Intro ▼  
Exit ▼

Plays all the songs in the memory for 10 seconds from the beginning in order, and moves to the next song.

- Select Exit or press the **⏮** button to move to an upper menu.

## Sound Setting

- 1 In the SETTINGS menu, select SOUND.
- 2 Select the sound mode you want with the VOL+/- button, and then press the MENU button.

Sound  
MEX LITE ▲  
MEX BASS ▼  
MEX PRO ▼

Sound  
MEX LITE ▲  
MEX BASS ▼  
MEX PRO ▼

Sound  
MEX LITE ▲  
MEX BASS ▼  
MEX PRO ▼

Sound  
Normal ▲  
Classic ▼  
Jazz ▼

Sound  
Normal ▲  
Classic ▼  
Jazz ▼

Sound  
Normal ▲  
Classic ▼  
Jazz ▼

Sound  
Rock ▲  
Pop ▼  
USER ▼

Sound  
Rock ▲  
Pop ▼  
USER ▼

Sound  
Rock ▲  
Pop ▼  
USER ▼

- Select Exit or press the **⏮** button to move to an upper menu.

## Sound Setting

- © A user can adjust up to 8 levels for each frequency depending on its 5 areas.



Use **◀▶** button to move horizontally and  
- VOL, VOL+ button to move vertically.

- © MEX is a term referring to 3 dimension stereo sound effect developed at EMERSIS, consisting of detailed functions such as LITE, BASS and PRO.

- ▶ **LITE** : gives a light and wide stereo image.
- ▶ **BASS** : gives a profound sound with reinforcement of low sound range.
- ▶ **PRO** : gives a rich and stable low sound range of feeling with stable and wide stereo images.

- Select a proper volume since the sound will be louder at MEX.
- It can be supported only if sampling frequency refers to 32Khz, 44.1Khz, 48Khz.
- The function of MAX is not set for the voice-recording WAV file.

## Display Setting

- 1 Select the DISPLAY in the SETTINGS.
- 2 Select the detailed setting with VOL +/- button and press the MENU button.
  - Select Exit or press the **◀▶** button to move to upper menu.

### Adjusting Scroll Speed

Select the scroll speed with the **◀▶** button. Scroll speed at which song title flows can be set from 0 to 10.



### Lyrics Support Setting

Select On, Off with **◀▶** button.

**ON** : displays the lyrics of a song in 3 lines when music is played back.

**OFF**: does not display the screen even if lyrics are saved.



- Refer to 3.8 Using LDB Manager to save lyrics in a music file.

## Display Setting

### Play Time Setting

Set the time that there appears on the display with the VOL+/- button.

**NORMAL TIME** : displays the current playback time.

**REMAIN TIME** : displays the remaining playback time.



### Display-out Time Setting

Sets the time when the display is automatically turned off after the last time you push a button.



### Adjusting Contrast

Set the display contrast with the ◀▶ button.

The contrast can be set from 0 to 10.

The bigger the number, the brighter the display.



56

## Timer Setting

- 1 Select Timer in the Settings.
- 2 Select the detailed items with VOL+/- button and then press the MENU button.
  - Select Exit or press the ◀◀ button to move to upper menu.

### Power-Off Time Setting

Set the power-off time with the ◀▶ button.

30, 60, 90, 120 seconds are available. But for a separate pushing of button after it have stopped, the power will automatically turn off after the time you set.

- If you set it to OFF, power will not automatically turn off.



### Sleep Time Setting

Set the sleep time with the ◀▶ button.

30, 60, 90, 120 seconds are available. But for a separate pushing of button after it have stopped, the power will automatically turn off after the time you set.

- If you set it to OFF, the power will not automatically turn off.



57

## Timer Setting

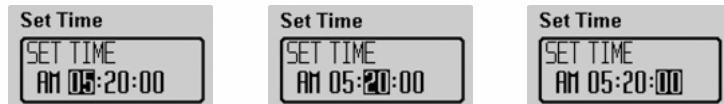
### Current Time Setting

**1** Press the MENU button to display the time setting screen.

**2** Set the AM/PM using VOL+/- button.



**3** Press the ►► button to move to the time you want and set the hour / minutes / seconds with VOL+/- button.



**4** Press the MENU button to complete time setting.

**5** Press the ◀◀ button to move to an upper menu.

## Encoding Setting

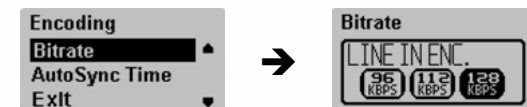
**1** In the Settings, select the Encoding.

**2** Select the detailed setting with VOL+/- button and press the MENU button.

### Bit Rate Setting

Set the encoding bit rate you want with ►► button.

If you set the bit rate low, it can be recorded for a longer time while the sound quality will be deteriorated. If you set it high, the sound quality will get better while the recording time will be shortened.



### Auto Sync Time Setting

Set the AutoSync Time with ◀◀ ►► button.

AutoSync is a function to separate and save a MP3 file if there is no sound during the time set in MP3 encoding.

If you set it to OFF, encoding will not stop even if there is no sound between songs recorded in MP3 encoding, but it is saved as one file.



## Setting

- 1 In the Settings, select the Mode Setting.
- 2 Select the detailed item with VOL+/- button and then press the MENU button.

### DEFAULT VOLUME Setting

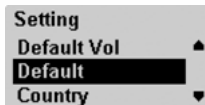
This function is to set the volume for the time when the power is turned on. When you turn on, the volume value saved when you turned off last is higher than the default volume, it will be the default volume. If it is lower than the default volume, the volume saved when you turn off is set to default volume. Set proper volume with ◀▶ button.

The default volume can be set from 0 to 30.



### DEFAULT Value Setting

If it's selected, all the settings concerning the volume and the play mode are initialized to the default of the player.



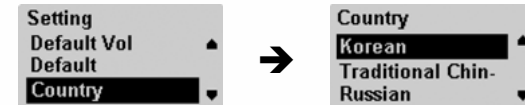
## Setting

### Country Setting

Set a language of an applicable country.

Select a language you want with VOL+/- button.

If you set a language, the bandwidth of FM radio frequency of the applicable country will be changed too.



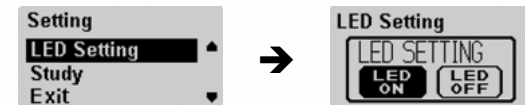
### LED Setting

Set LED so that it can continue to be turned on while the player is played.

LED get turned on if you select LCD ON.

LED will flicker every 3 seconds after LCD get turned off if you select LCD OFF.

- If you set it to 0 second, STUDY function is not supported.



## Setting

### STUDY Function Setting

You can the time with the ⏮ ⏭ button.

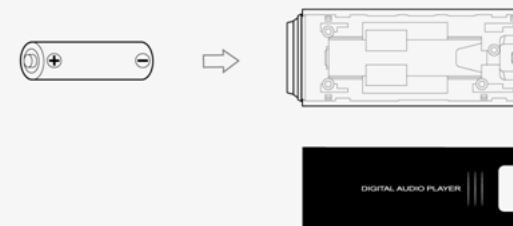
15, 30, 45, 60 seconds are available. When the time is set and if you press the ⏭ button during play, it will be played back from the time adding the time set in the current playback time. When you press the ⏮ button, it will be moved to the time as much as the time set in the current play back.

- If you set it to 0 second, STUDY function is not supported.



## About Battery

### © How to Insert Battery



**!NOTE:** Make sure the polarity (+ and -) of the battery is correctly inserted.

### © Battery Gauge



Full Gauge



Mid Gauge



Low Gauge




Zero Gauge




## HOLD Setting Method

- © If you use the function of hold, you can prevent a mal-function by a button while the player is played during player operation, including an unnecessary consumption of built-in battery.

### To Set to HOLD Status

Push the HOLD switch on the side of the player at the direction of the arrow (HOLD). The player is locked off with  displayed shown after the display shows "HOLD".

### To Release Hold Status

Move the HOLD switch to the direction opposite to the arrow. The hold status is released as there disappears  on the DISPLAY.

## Troubleshooting

- © If you think the player fails, check the followings:

### Power may be not turned on.

- Check if the battery is properly inserted with correct polarity.
- Battery may be dead. Replace the battery.
- Check whether the HOLD switch of the player is set at ON.  
(Set it to the direction opposite to the arrow(OFF) if it is set at ON.)

### Unrecognizable characters may be shown in the display.

- Check if the language is properly set in the LANGUAGE menu.
- Since the ID3 Tag of a song may be incorrect, you should fix it using such an audio player program as Winamp.

### Radio station makes such a noise as "boooo~" or "Ssaaaa~", or its reception is bad.

- Change the direction of the Player and its earphone.  
Please turn the power of the electric appliances OFF near the Player.  
If the noise is reduced, use the Player away from them.
- As an earphone plays a role as an antenna to the player when listening to the radio station, no earphone may cause a poor reception.

## Troubleshooting

### No sound or noise is heard during the playback.

- Check if the music file is stored in the memory.
- Check if an earphone is properly plugged in.  
Or check if its jack is contaminated by foreign substances.
- Check if the volume is set to "0".
- Damaged data makes noise or breaks off the sound from the MP3 and WMA files. Replace it with other file to check if the data has been damaged.

### Cannot download files.

- Check if the USB cable is properly connected between the Player and PC.
- Check if the USB driver is properly installed.
- Check if the memory is sufficient.

### Buttons has been locked down.

- Check if the player is set at HOLD.

**NOTE:** if the player stops due to an unexpected problem or the "End" button does not operate at all, press "MENU" and "REC" at the same time to turn off the player. Then, set the clock again.

## Specifications

Memory		In-built memory 256MB / 512MB / 1GB / 2GB
DISPLAY		128x64 OLED Two Color (Blue, Yellow)
MP3 Encoding		MPEG 1/2/2.5 Layer3, WMA, ASF(Audio only), OGG Q9
Compatible File Format		8 Kbps ~ 320 Kbps (WMA/ASF: 32 ~ 192 Kbps)
Audio	Frequency	20 Hz ~ 20 KHz
	Headphone Output	6 mW + 6 mW (16 ohm)
	S/N Ratio	> 90 dB
FM Radio	FM Frequency	87.5 MHz ~ 108 MHz 76.0MHz ~ 108MHz(JAPAN)
	Headphone Output	6 mW + 6 mW (16 ohm)
	S/N Ratio	> 65 dB
	Antenna	Earphone Antenna
Language		Mult i-Language
USB		USB 2.0 (High speed)
Maximum Playback Time		Approx.17 hours (Company standard)
Distortion Rate		< 0.1%
Size		28.0 (φ) x 70.0(H) mm
Battery		AAA size x 1
Weight		24g (W/O Battery)

\* The specification and exterior of the product are subject to change without a prior notice for further improvements of the player.

## Service A/S

Visit our website to check the latest piece of information, getting updated on a new version of software for the player.

- Website: [www.ezmax.co.kr](http://www.ezmax.co.kr) / [www.ezoliver.com](http://www.ezoliver.com)
- Address: # 504, 5<sup>th</sup> Floor, Hanlim Human Power, 1-40, Geumjeong-dong, Gunpo-si, Gyeonggi-do, Korea.
- Tel: +82-31-479-7180
- Fax : +82-31-479-7188
- e-mail : [webmaster@ezmax.co.kr](mailto:webmaster@ezmax.co.kr)

**NOTE:** If you want to receive A/S, visit our company in person. You may send the player by registered mail or by a delivery service). But, please note that home delivery service is not available.

## Warranty

We certify as follows:

1. This product has passed a strict quality control and inspection procedure.
2. You can receive free A/S's for 1 year after the date of purchase of this product(even if it is within a warranty period, we may charge for repairing items that are not included in free services.).
3. This warranty is valid in Korea alone.
4. Enclose this warranty when you request for a repair service.
5. Keep this warranty since it is not re-issued.
6. Contact the place where you purchased this product for any service, if a failure has occurred.

Product Name			
Model Name			
Date of Purchase	D/M/Y	Warranty Period	Year
Place of Purchase			Amount
Confirmation by Seller			Won
Telephone			
Customer	Address		
	Name		
	TEL		

Make sure to fill out the form when you purchase this product.

## FCC Compliance Statements

Note: This equipment has been tested and found to comply with the limits for a Class B digital device, pursuant to part 15 of the FCC Rules. These limits are designed to provide reasonable protection against harmful interference in a residential installation. This equipment generates, uses and can radiate radio frequency energy and, if not installed and used in accordance with the instructions, may cause harmful interference to radio communications. However, there is no guarantee that interference will not occur in a particular installation. If this equipment does cause harmful interference to radio or television reception, which can be determined by turning the equipment off and on, the user is encouraged to try to correct the interference by one or more of the following measures:

- Reorient or relocate the receiving antenna
- Increase the separation between the equipment and receiver.
- Connect the equipment into an outlet on a circuit different from that to which the receiver is connected.
- Consult the dealer or an experienced radio / TV technician for help.

Warning : Your are cautioned that any change or modifications to the equipment not expressly approved by the party responsible for compliance could void your authority to operate such equipment.