

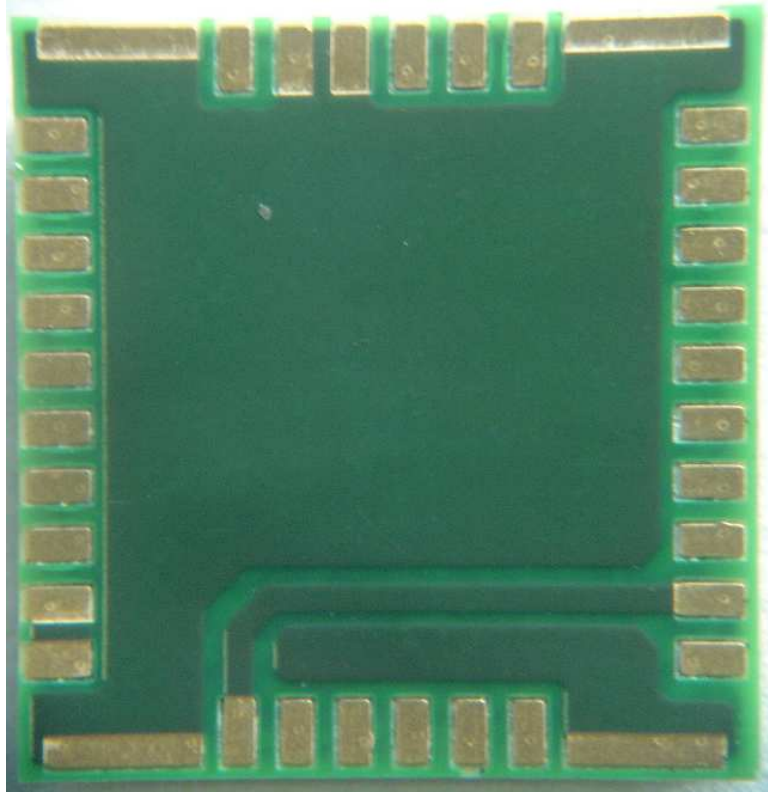
**【WLAN Module Appearance】**

Dimensions : 8.2(W) × 8.4(D) × 1.32(H) [Unit : mm]

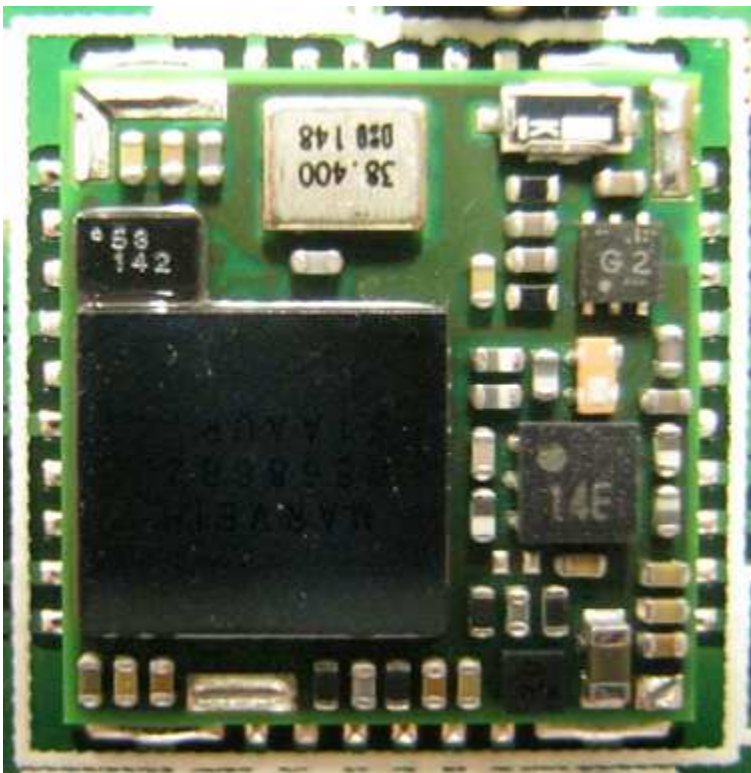
Top View(Shield is attached)



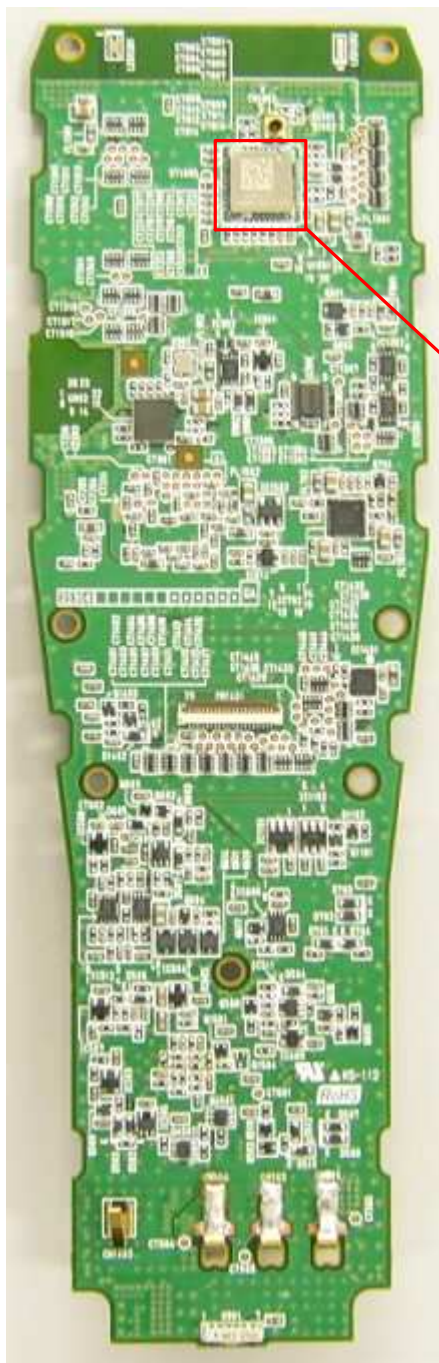
Bottom View



Top View(Shield is not attached)



PCB Front



PCB Back

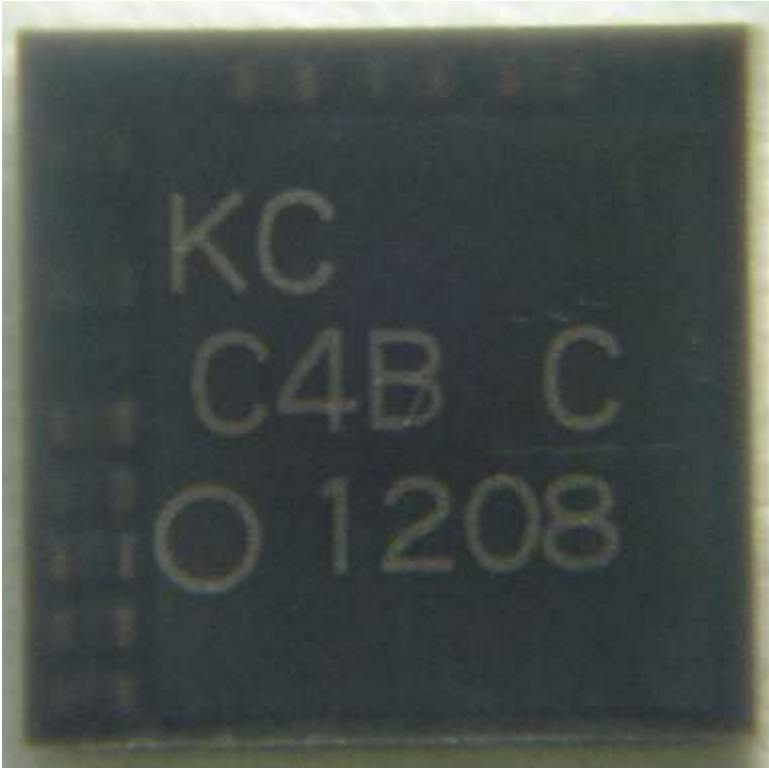




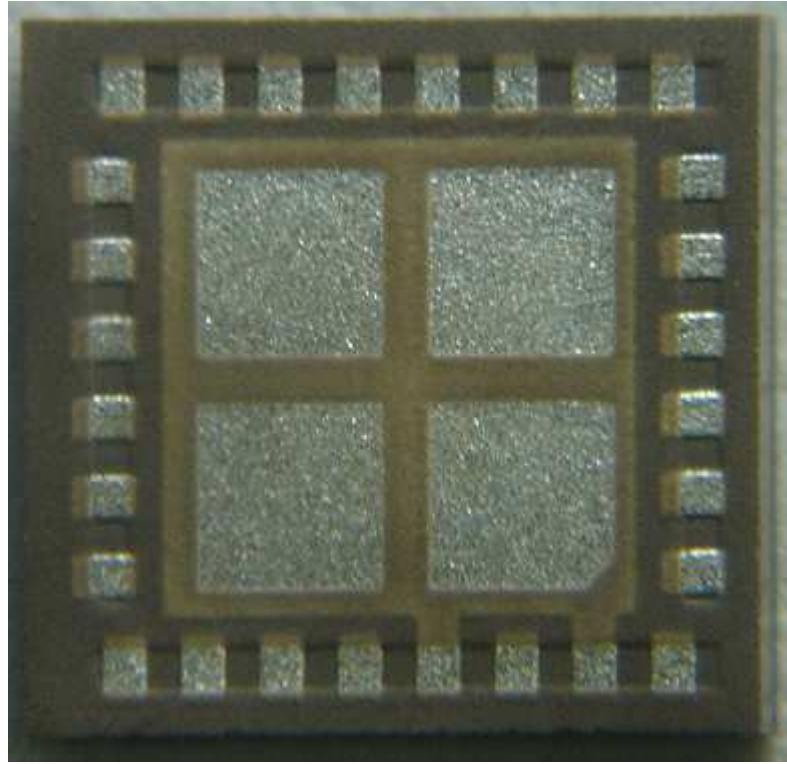
**【Bluetooth Module Appearance】**

Dimensions : 4.9(W) × 4.7(D) × 1.0(H) [Unit : mm]

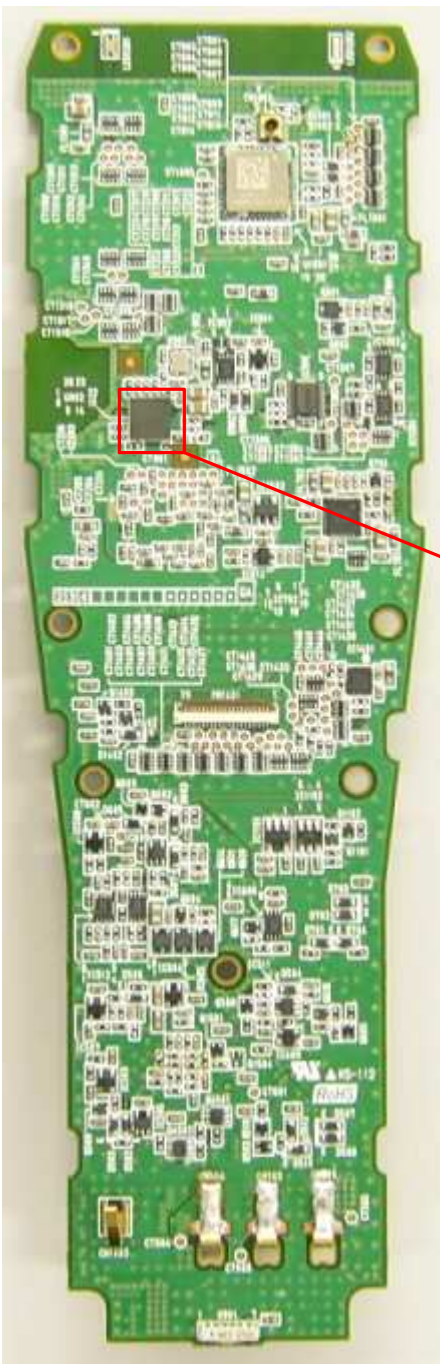
Top View



Bottom View



PCB Front



Bluetooth Board

PCB Back



Bluetooth Antenna