

SIZE: 150X85mm, 105g铜版纸, 4C, 骑马订



Portable wireless speaker
HD-Force

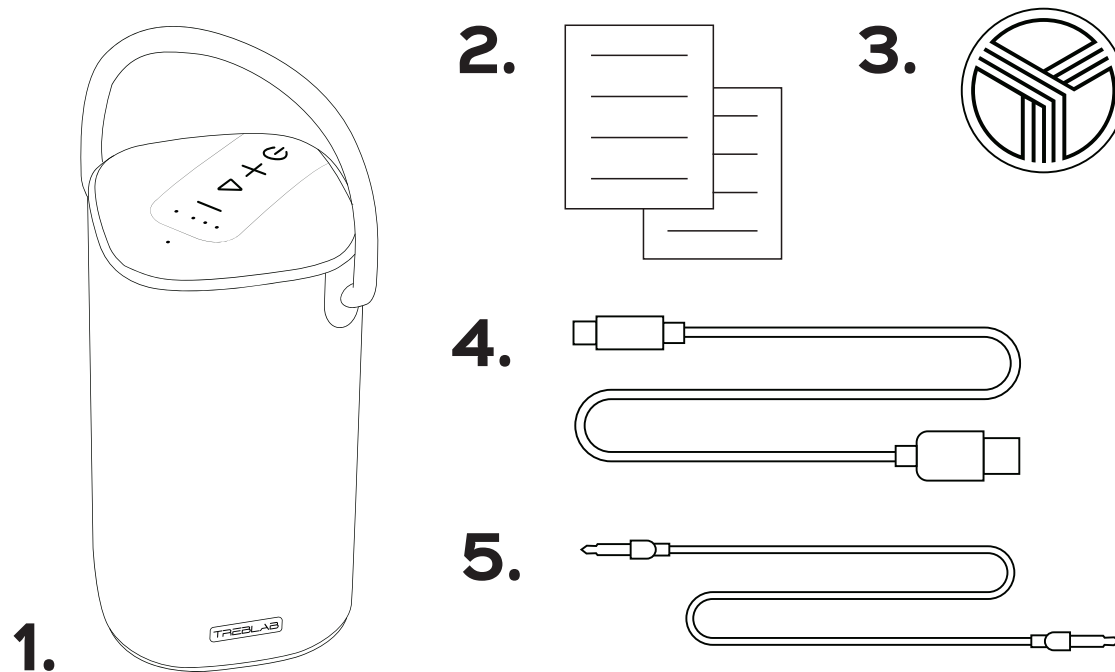
User's Manual

Please read this
manual before
using the product

Thank you for choosing TREBLAB HD-Force!

This speaker provides superior sound quality and portability, combined with entertaining features and the convenience of hands-free wireless operation.

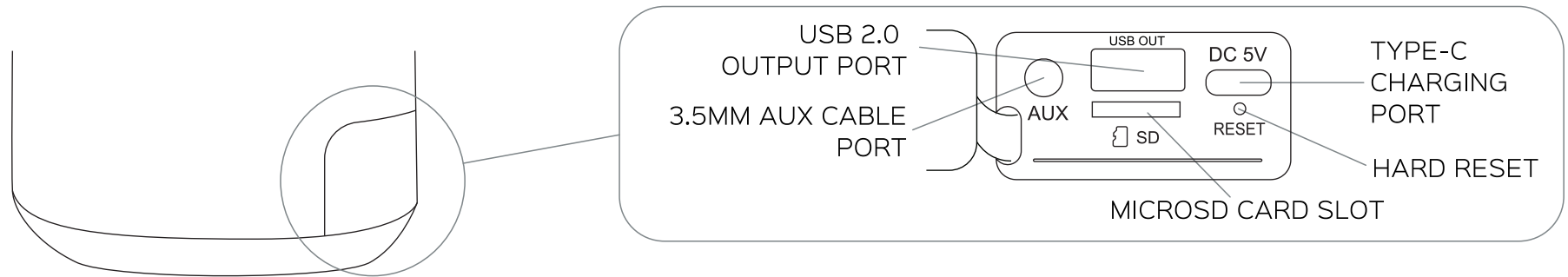
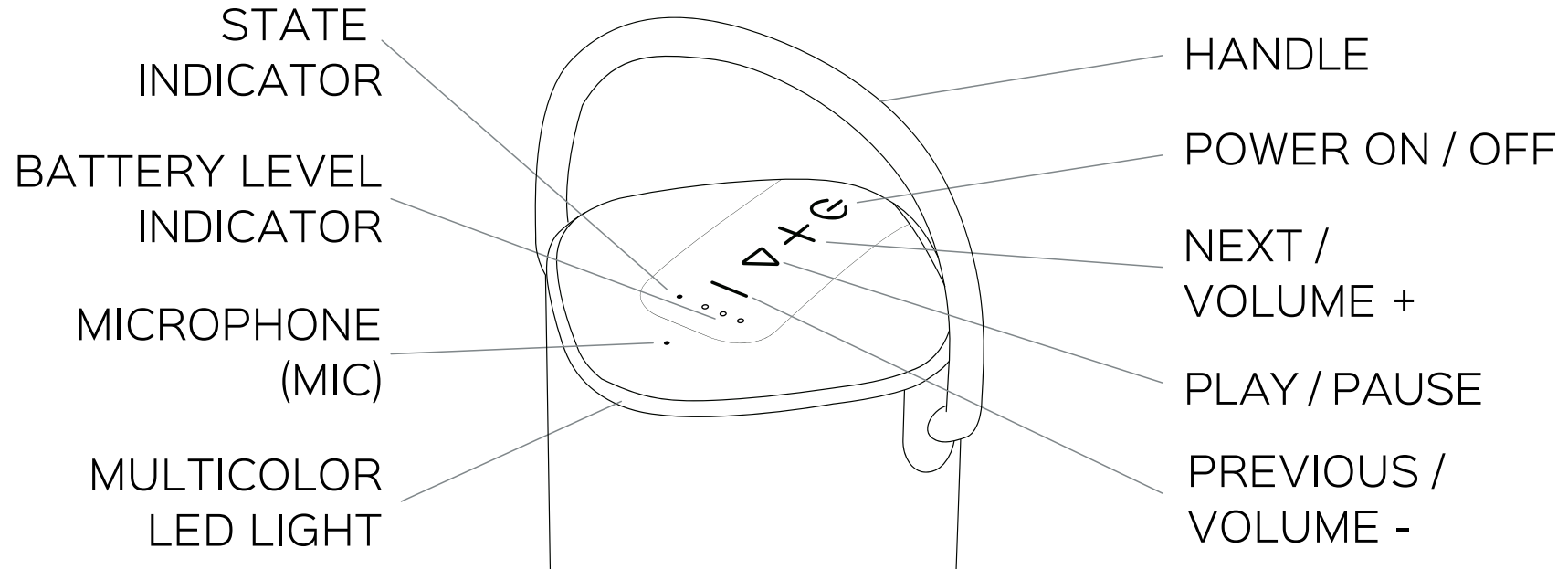
WHAT'S IN THE BOX



HD-Force

1. TREBLAB HD-Force speaker
2. User's manual
3. Round TREBLAB logo sticker
4. Type-C charging cable
5. 3.5mm audio cable

BUTTONS AND PARTS



SPEAKER FUNCTION

Function	Operation
Power ON	Press and hold the POWER button for 2 seconds
Power OFF	Press and hold the POWER button for 3 seconds
Play / Pause	Press the PLAY / PAUSE button
Volume +	Press the VOLUME + button
Volume -	Press the VOLUME - button
Next track	Press and hold the VOLUME + button for 2 seconds
Previous track	Press and hold the VOLUME - button for 2 seconds
Switch between Wireless / AUX / SD card modes	Press the POWER button

Switch the multicolor LED light mode/Turn OFF LEDs	Double-press the PLAY / PAUSE button
Answer a phone call	Press the PLAY / PAUSE button during incoming call
Reject a phone call	Press and hold the PLAY / PAUSE button for 2 seconds during incoming call
End a phone call	Press the PLAY / PAUSE button when on call
TWS mode	Take two HD-Force , double-press the POWER button on both speakers while two of them are turned ON and not connected
Disconnect	Press and hold the VOLUME + and the VOLUME - buttons simultaneously for 3 seconds when connected to a device

Factory reset	Press and hold the VOLUME + and the VOLUME - buttons simultaneously for 3 seconds when disconnected from a device
Hard reset	Press the HARD RESET button under the rubber cover
Mute sound (in the AUX mode only)	While connected via AUX cable, press the PLAY / PAUSE button

SETTING UP YOUR SPEAKER

Turn ON

Press and hold the **POWER** button for 2 seconds. You will hear the sound cue, the battery level indicators will light up, the multicolor LED light will start breathing white and the BLUE state indicator will start flashing.

Turn OFF

Press and hold the **POWER** button for 3 seconds. You will hear the sound cue and all the lights will go OFF.

WIRELESS PAIRING

Make sure **TREBLAB HD-Force** is fully charged.

- 1.** Turn ON your speaker. You will see the BLUE state indicator flashing, meaning that the speaker is in pairing mode.
- 2.** Activate the Bluetooth mode on the source device (smartphone, tablet, laptop).
- 3.** Select **TREBLAB HD-Force** from the Bluetooth devices list. Keep the speaker within 3 feet / 1 meter from the source device while pairing.
- 4.** If prompted to connect by your device, select Yes.
- 5.** If requested a passcode, enter 0000.

6. Once **HD-Force** is successfully paired and connected, the BLUE state indicator will stop flashing and stay BLUE.

RE-CONNECTING

After the initial pairing, the speaker will automatically connect to the previously paired device when turned ON again. If reconnection does not happen automatically, the speaker will start looking for any other previously paired device within the effective distance range. **TREBLAB HD-Force** can remember up to 6 recently paired devices.

NOTE: The speaker remembers the last mode it was in before it has been turned OFF. So, if the speaker is turned OFF in the SD card mode (considering that the MicroSD card is still in the speaker), after being turned back ON, it will automatically go back to the SD card mode.

TRUE WIRELESS STEREO (TWS) - PAIRING TWO SPEAKERS

The TWS technology allows you to use two speakers paired wirelessly to create a wireless dual-channel system, delivering a true stereo sound effect. While using this function, one speaker (Master, left channel) is paired with a source device, the other (Slave, right channel) speaker is paired with the Master speaker.

- Make sure that both speakers are turned ON, in Wireless mode and not connected to any source device.
- Double-press the **POWER** button on both speakers to enter the TWS mode. You will hear the sound prompt, and both speakers' state indicators will start flashing BLUE and GREEN.
- Once the speakers are paired in TWS, you will hear the sound prompt and one of the speakers' state indicator will start flashing BLUE slowly. This will be the Master speaker. The other speaker's state indicator will turn BLUE. This will be the Slave speaker.

- Enable Bluetooth on the source device and select **TREBLAB HD-Force** from the Bluetooth devices list.
- If prompted to connect by your device, select Yes.
- If requested a passcode, enter 0000.
- Now you can use the speakers in stereo mode. Kindly note that the maximum distance between speakers should not exceed 33 feet / 10 meters.

There are a few ways to disable the TWS function:

- When the speakers are connected to the source device, press the **VOLUME +** and the **VOLUME -** buttons simultaneously for 3 seconds on the Master speaker - the connection with the source device will interrupt, but the speakers will remain in the TWS mode. This way you can connect another source device.
- When the speakers are connected to the source device, press the **VOLUME +** and the **VOLUME -** buttons simultaneously for 3 seconds on the Slave speaker - the Master speaker remain connected to the source device, but the Slave speaker will disconnect and enter the pairing mode.

- When the speakers are NOT connected to the source device, press the **VOLUME +** and the **VOLUME -** buttons simultaneously for 3 seconds on either speaker - TWS connection between them will be interrupted.

NOTE:

1. When connected in TWS mode, the calling feature is available on the Master speaker only.
2. Once both speakers are turned back ON, they will try to reestablish the TWS connection. If you need to use the speakers separately, you need to **factory reset** at least one of them.

AUDIO PLAYBACK

To pause and resume playback when connected wirelessly, press the **PLAY / PAUSE** button.

To adjust the volume, press the **VOLUME +** or the **VOLUME -** button while listening to music.

To change the track on the **HD-Force**, press and hold the **VOLUME +** or the **VOLUME -** button for 2 seconds.

AUX MODE

You can connect **TREBLAB HD-Force** to compatible devices using the supplied 3.5mm AUX cable.

- ✔ Turn the speaker ON.
- ✔ Plug one end of the supplied 3.5mm AUX cable into the 3.5mm AUX cable port on the back of the speaker (under the rubber cover). Plug the other end into the 3.5mm jack on your device.
- ✔ The state indicator will turn GREEN. Now you can play music and audio.

To mute the audio, press the **PLAY / PAUSE** button.

NOTE: On-device control is not supported for the NEXT, PREVIOUS and PAUSE functions when using the 3.5mm AUX cable. Phone calls management using the **PLAY / PAUSE** button is not supported as well. You will need to make adjustments using your smart device.

SD CARD MODE

The **TREBLAB HD-Force** speaker can play music from the MicroSD cards up to 512GB. All you need to do is to copy music to the memory card (in folders or just to the card root), insert it into the MicroSD card slot on the back of the speaker (under the rubber cover). You will hear the sound prompt and the state indicator will turn green.

To start playing from the MicroSD card, press the **PLAY / PAUSE** button.

The playlist is arranged according to song addition date (the older tracks play first).

The **HD-Force** speaker supports the following formats: **MP2, MP3, WMA, APE, FLAC, AAC, MP4, M4A, WAV, AIF, AIFC**; and the following file systems: **FAT16, FAT32, exFAT, FAT64**.

NOTE: When inserting the MicroSD card into the speaker, the card's contact pad should be faced upwards.

PHONE CALLS

TREBLAB HD-Force can be used to make and receive phone calls when connected wirelessly. Audio playback will be paused during calls.

To answer / end a call

Press the **PLAY / PAUSE** button

To reject a call

Press and hold the **PLAY / PAUSE** button for 2 seconds

To redial

Press and hold the **PLAY / PAUSE** button for 2 seconds

NOTE: For better call quality, face the microphone when you speak.

CHARGING

When the battery is running low, you will hear a sound signal.

TREBLAB HD-Force may be used while charging in the Wireless, AUX and SD card modes.

To charge the speaker, plug one end of the supplied cable into the TYPE-C charging port under the rubber cover on the back of the speaker. Plug the other end of the charging cable into a standard USB port. It takes up to 4-5 hours to fully charge.

Once plugged in, the battery level indicators will start flashing slowly showing the current battery level (for more details, please check the BATTERY LEVEL INDICATION section). This means that the speaker is charging. When the speaker is fully charged, all tree battery level indicators will stop flashing and become steady.

Be sure to use a 5V DC, 0.5-2A adaptor or charger. Using the power source with lower power will increase the overall charging time.

Unplug **HD-Force** from the charging cable and the cable itself from the power source when not in use.

If the speaker is left unused, even the fully charged battery will lose its charge over time. We recommend fully charging the **HD-Force** speaker at least twice a month to maintain sufficient battery life.

BATTERY LEVEL INDICATION

The **HD-Force** speaker is equipped with the battery level indicators - LEDs. The current charge level is displayed when the speaker is ON and when the speaker is used as a power bank in OFF state.

- ✔ Charge level is between **0% and 30%**: one LED is ON (flashing during the speaker charging or in the power bank mode).
- ✔ Charge level is between **30% and 70%**: two LEDs are ON (flashing during the speaker charging or in the power bank mode).
- ✔ Charge level is between **70% and 100%**: three LEDs are ON (flashing during the speaker charging or in the power bank mode).

POWER BANK MODE

TREBLAB HD-Force inbuilt battery can be used as a power bank to charge your smartphone or tablet.

- 1.** Connect your device to the speaker by plugging your device's charging cable into the USB 2.0 output port under the rubber cover on the back of the speaker.
- 2.** If the speaker is in OFF state, press the **POWER** button to start charging. In case the speaker is ON, it will start charging instantly after you connect the device to the USB 2.0 output port.
- 3.** There is no indication signal when the smart device is fully charged. Please pay attention to your device's battery charge indicator during the charging time.

TROUBLESHOOTING

Problem

Solution

Not powering on

Make sure the speaker is fully charged.

Charge for 2 hours, if necessary.

Press and hold the **POWER** button for 2 seconds.

Press the **HARD RESET** button on the back of the speaker (under the rubber cover).

Not charging

Clean the charging port using a soft brush.

Try charging the case with another Type-C cable, power source, adaptor (if available).

Press the **HARD RESET** button on the back of the speaker (under the rubber cover).

Not pairing

Make sure the speaker is in the Wireless mode.
Make sure the speaker is not paired with any other device, as it can only pair with one device at a time.
Press the **VOLUME +** and **VOLUME -** buttons simultaneously and hold for 3 seconds. This will force the speaker to forget previously paired devices. Repeat the steps for pairing as previously described.

MicroSD card is not recognized

The maximum supported MicroSD size of 512GB is exceeded.
File formats unsupported.
File system of the memory card is not supported.

Not finding a wireless driver on your laptop

Make sure your laptop supports wireless connections. If it doesn't, you will need an external wireless USB adapter compatible with your laptop. For further details, consult with your laptop manufacturer.

Frequent disconnection and noise

Ensure that nothing is blocking the signal between your device and the **HD-Force**.

Check if the speaker is running out of power.

SPECIFICATIONS

Battery:

Input 5V/0.5A-2A

Output 5V/2.1A

Charging time:

4-5 hours

Bluetooth version:

5.0

Supported profiles:

A2DP/AVRCP/HFP/HSP/OPP/HID/SPP/PBAP/GATT/SM

Speaker size:

2 x 50mm , 1 x 80mm

Water resistance:

IPX6

Charging port:

TYPE-C

Audio port:

3.5mm jack

MicroSD card file systems:

FAT16, FAT32, exFAT, FAT64

**MicroSD card supported
formats:**

MP2/MP3/WMA/APE/FLAC/AAC/MP4/M4A/WAV/AIF/
AIFC

Dimensions:

4.58 x 4.58 x 8.74 inches / 116.5 x 116.5 x 222 mm

Weight:

3.2 lbs / 1455g

RECYCLING

The speakers can be recycled, and they should be in order to keep our planet clean. Where should you bring them?

In the **US**, there are a couple of options:

1. Best Buy has a recycling program. Just take the broken speaker with you next time you visit a Best Buy store.

This link will help you find the best location: <https://www.bestbuy.com/site/store-locator/>

2. Check for other possible locations next to you on these websites (just enter your ZIP to find a location):

<https://www.call2recycle.org>

<https://search.earth911.com>

<https://recyclenation.com/find>

<https://www.cta.tech/Consumer-Resources/Greener-Gadgets>

In **Canada**, please visit the links below:

<https://thinkreuse.net>

<https://www.call2recycle.ca>

In the **UK**, please visit the links below:

<https://www.recycle-more.co.uk/>

<https://www.recyclenow.com/local-recycling>

THANK YOU

We truly appreciate that you chose **TREBLAB** as your trusted brand of wireless speakers and sincerely hope you enjoy the great sound and seamless usability **TREBLAB HD-Force** provides. We love making our customers happy by providing true value with our products. If for any reason you are not completely satisfied with your purchase or have any questions, please visit https://treblab.com/contact_us. We care about our customers most of all and are always here to help you.



TREBLAB

HD-Force

PORTABLE
WIRELESS SPEAKER

1 YEAR WARRANTY Parts and Labor Warranty

Please visit www.treblab.com
to register YOUR product.

Manufactured by Productech

Made in China



WARNING: Cancer and Reproductive
Harm - www.P65Warnings.ca.gov



Federal Communications Commission (FCC) Statement. This device complies with part 15 of the FCC Rules. Operation is subject to the following two conditions:

(1) This device may not cause harmful interference, and

(2) this device must accept any interference received,

including interference that may cause undesired operation. Note: This equipment has been tested and found to comply with the limits for a Class B digital device, pursuant to part 15 of the FCC Rules. These limits are designed to provide Reasonable protection against harmful interference in a residential installation. This equipment generates, uses and can radiate radio frequency energy and, if not installed and used in accordance with the instructions, may cause harmful interference to radio communications. However, there is no guarantee that interference will not occur in a particular installation. If this equipment does cause harmful interference to radio or television reception, which can be determined by turning the equipment off and on, the user is encouraged to try to correct the interference by one or more of the following measures:

- Reorient or relocate the receiving antenna.
- Increase the separation between the equipment and receiver.
- Connect the equipment into an outlet on a circuit different from that to which the receiver is connected.
- Consult the dealer or an experienced radio/TV technician for help.

Warning: Changes or modifications made to this device not expressly approved by **SHENZHEN WEIKING TECHNOLOGY CO.,LTD** may void the FCC authorization to operate this device. Note: The manufacturer is not responsible for any radio or TV interference caused by unauthorized modifications to this equipment. Such modifications could void the user's authority to operate the equipment.

RF exposure statement:

This device complies with FCC RF radiation exposure limits set forth for an uncontrolled environment. The device is installed and operated without restriction.