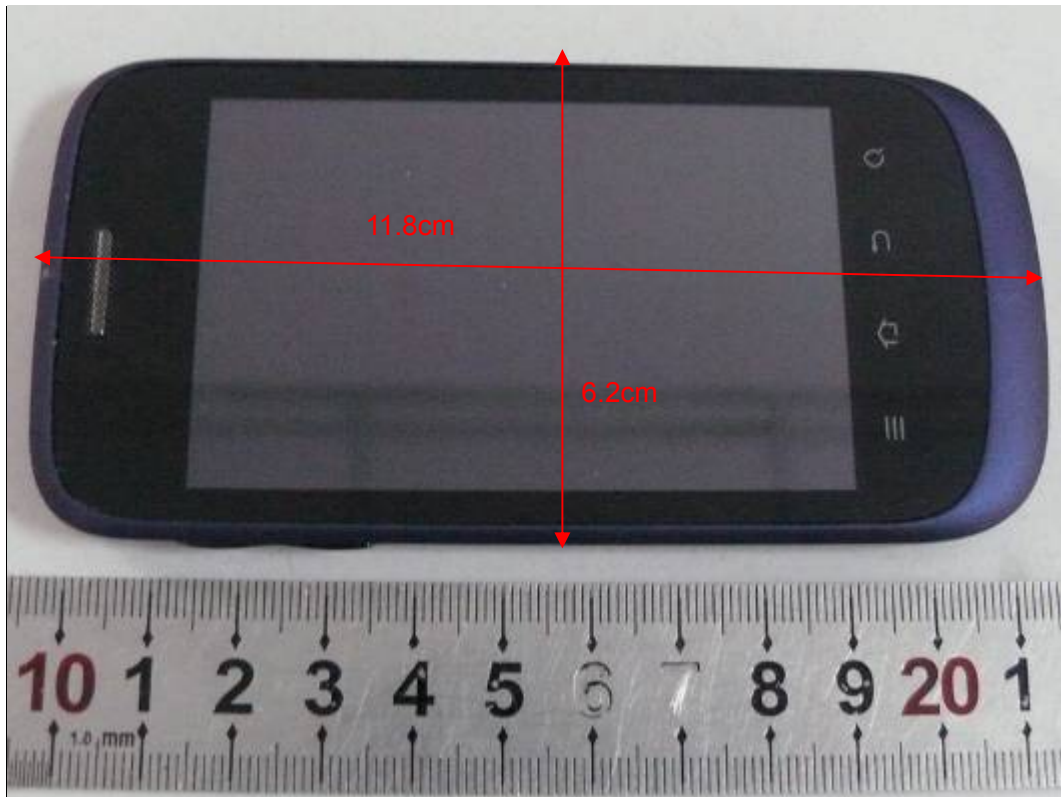


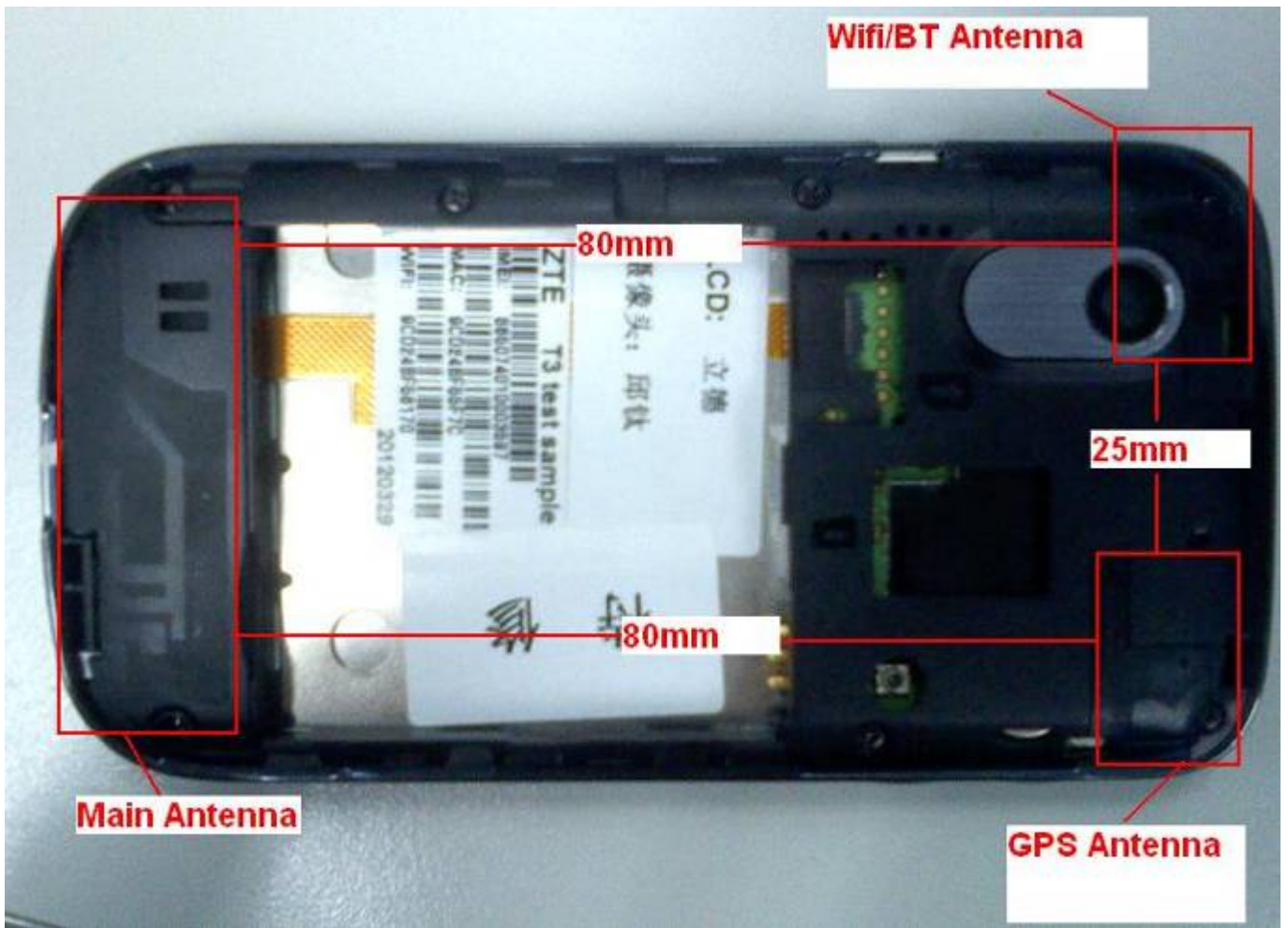
ANNEX J: The EUT Appearances and Test Configuration



a: EUT

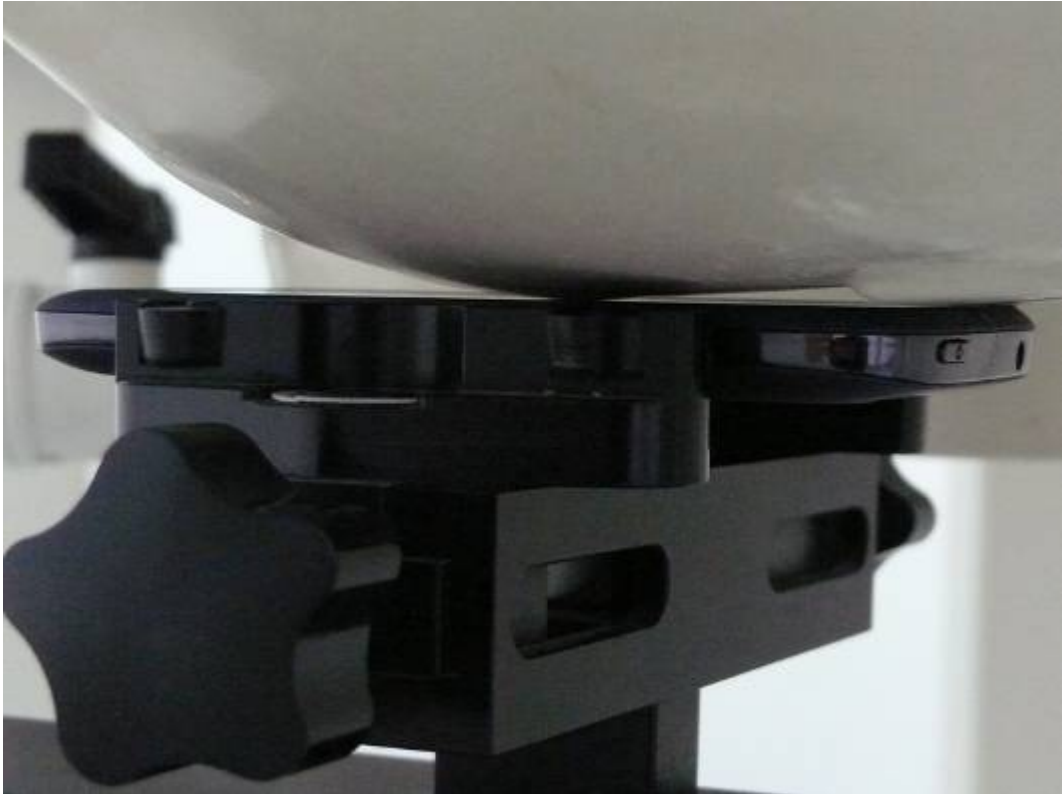


b: Battery



c: Back View

Picture 10: Constituents of EUT



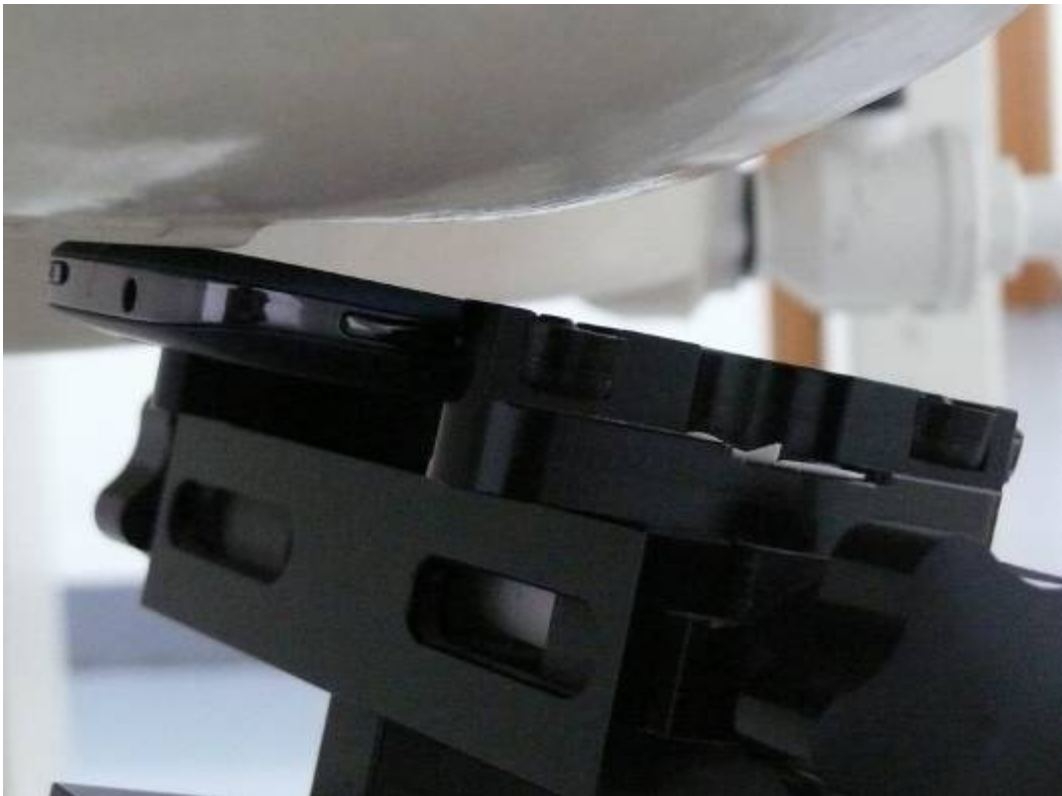
Picture 11: Left Hand Touch Cheek Position



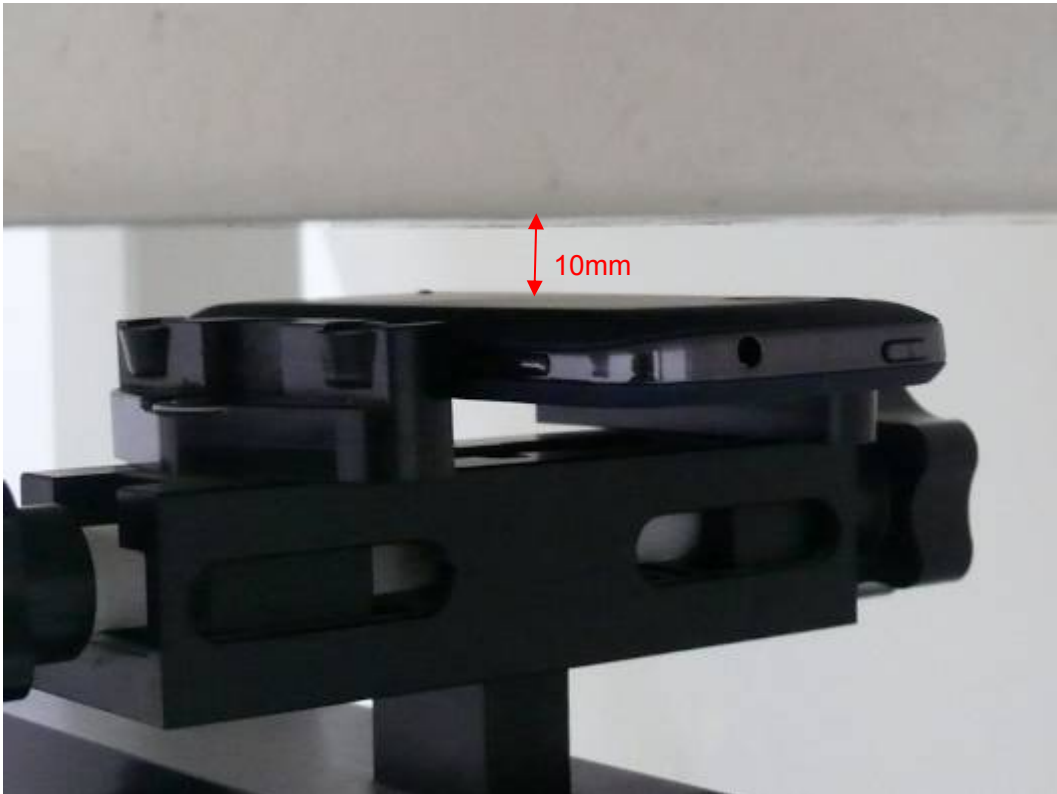
Picture 12: Left Hand Tilt 15 Degree Position



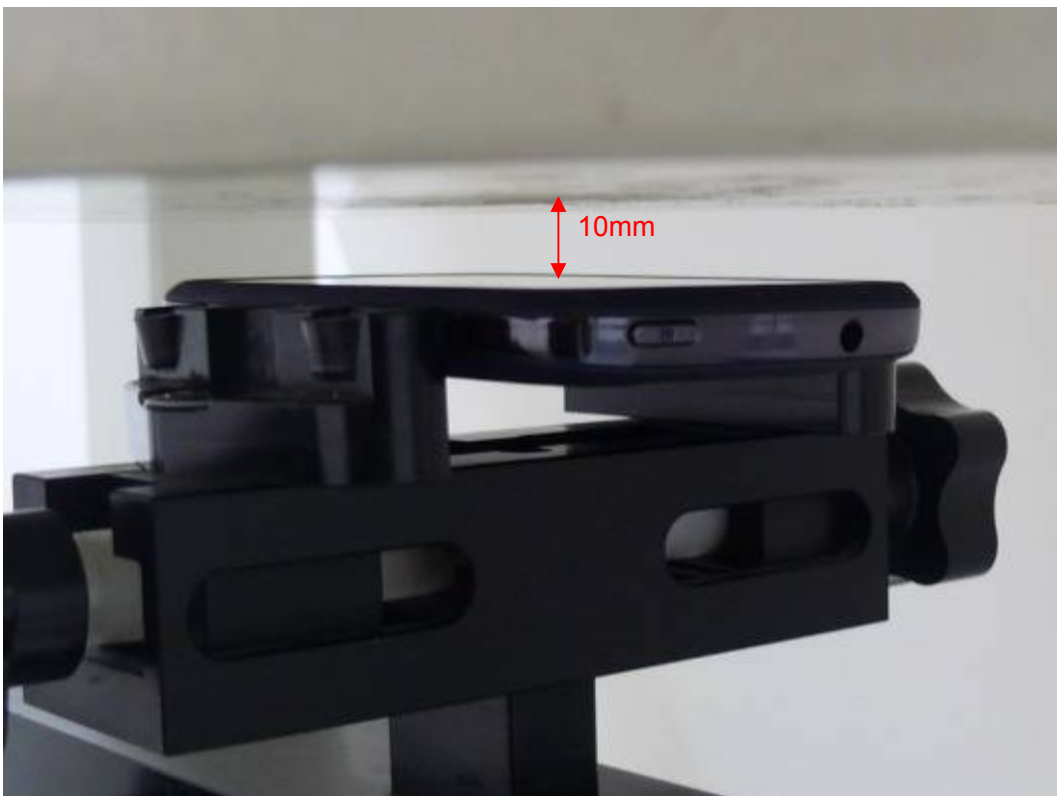
Picture 13: Right Hand Touch Cheek Position



Picture 14: Right Hand Tilt 15 Degree Position



Picture 15: Back Side, the distance from handset to the bottom of the Phantom is 10mm



Picture 16: Front Side, the distance from handset to the bottom of the Phantom is 10mm



Picture 17: Left Edge, the distance from handset to the bottom of the Phantom is 10mm



Picture 18: Right Edge, the distance from handset to the bottom of the Phantom is 10mm



Picture 19: Top Edge, the distance from handset to the bottom of the Phantom is 10mm



Picture 20: Bottom Edge, the distance from handset to the bottom of the Phantom is 10mm



Picture 21: Back Side with earphone, the distance from handset to the bottom of the Phantom is 10mm



Picture 22: Front Side with earphone, the distance from handset to the bottom of the Phantom is 10mm