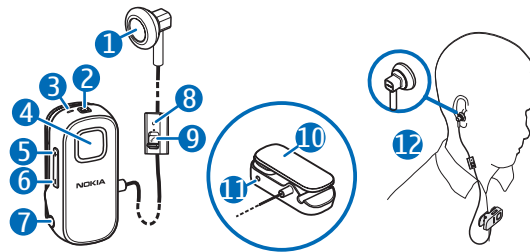
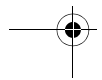
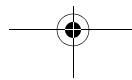
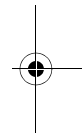
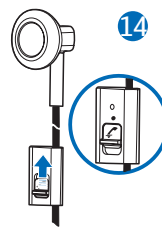
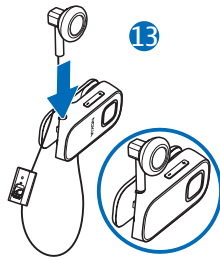
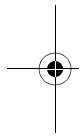


Nokia Bluetooth Headset BH-215



9211752/1



ENGLISH

DECLARATION OF CONFORMITY

Hereby, NOKIA CORPORATION declares that this HS-129W product is in compliance with the essential requirements and other relevant provisions of Directive 1999/5/EC. A copy of the Declaration of Conformity can be found at http://www.nokia.com/phones/declaration_of_conformity/.

CE 0560

© 2008 Nokia. All rights reserved.

Nokia, Nokia Connecting People and the Nokia Original Accessories logo are trademarks or registered trademarks of Nokia Corporation. Other product and company names mentioned herein may be trademarks or tradenames of their respective owners.

Reproduction, transfer, distribution, or storage of part or all of the contents in this document in any form without the prior written permission of Nokia is prohibited.

Bluetooth is a registered trademark of Bluetooth SIG, Inc.

Nokia operates a policy of ongoing development. Nokia reserves the right to

make changes and improvements to any of the products described in this document without prior notice.

To the maximum extent permitted by applicable law, under no circumstances shall Nokia or any of its licensors be responsible for any loss of data or income or any special, incidental, consequential or indirect damages howsoever caused.

The contents of this document are provided "as is". Except as required by applicable law, no warranties of any kind, either express or implied, including, but not limited to, the implied warranties of merchantability and fitness for a particular purpose, are made in relation to the accuracy, reliability or contents of this document. Nokia reserves the right to revise this document or withdraw it at any time without prior notice.

The availability of particular products may vary by region. Please check with your Nokia dealer for details.

Export controls

This device may contain commodities, technology or software subject to export laws and regulations from the US and other



ENGLISH



countries. Diversion contrary to law is prohibited.

Introduction

With the Nokia Bluetooth Headset BH-215, you can make and receive calls while on the move.

Read this user guide carefully before using the headset. Also, read the user guide for your phone.

This product may contain small parts. Keep them out of the reach of small children.

Bluetooth wireless technology

Bluetooth wireless technology allows you to connect compatible devices without cables. The phone and the

headset do not need to be in line of sight, but they should be within 10 metres (33 feet) of each other.

Connections may be subject to interference from obstructions, such as walls, or other electronic devices.

The headset is compliant with Bluetooth Specification 2.1 + EDR supporting the Headset Profile 1.1 and Hands-Free Profile 1.5. Check with the manufacturers of other devices to determine their compatibility with this device.

Get started

The headset contains the following parts shown on the title page:

earpiece (1), power key (2), indicator light (3), answer/end key (4), volume



ENGLISH

up key (5), volume down key (6), slot for storing the earpiece (7), microphone (8), mute key (9), clip (10), and charger connector (11).

Before using the headset, you must charge the battery and pair the headset with a compatible phone.

Parts of the device are magnetic. Metallic materials may be attracted to the device. Do not place credit cards or other magnetic storage media near the device, because information stored on them may be erased.

Charge the battery

Before charging the battery, carefully read "Battery and charger information".



Warning: Use only chargers approved by Nokia for use with this particular model.

The use of any other types may invalidate any approval or warranty, and may be dangerous.

When you disconnect the power cord of any accessory, grasp and pull the plug, not the cord.

1. Connect the charger to a wall outlet.
2. Connect the charger cable to the charger connector. The red indicator light is displayed during charging. Charging the battery fully may take up to 2 hours.
3. When the battery is fully charged, the green indicator light is displayed. Disconnect the charger from the headset, then from the wall outlet.

The fully charged battery has power for up to 10 hours of talk time or up to 200 hours of standby time.

When the battery is discharged, the headset beeps every minute and the red indicator light flashes.

ENGLISH

Switch on or off

To switch on, press and hold the power key for about 2 seconds. The headset beeps, and the green indicator light is displayed. The headset tries to connect to a paired phone.

To switch off, press and hold the power key for about 5 seconds. The headset beeps, and the red indicator light is briefly displayed. If the headset is not connected to a device within about 30 minutes, it switches off automatically.

Pair the headset

1. Ensure that your phone is on and the headset is off.
2. Press and hold the power key (for about 5 seconds) until the green indicator light starts to flash quickly.

3. Activate the Bluetooth feature on the phone, and set it to search for Bluetooth devices.

4. Select the headset from the list of found devices.

5. Enter the passcode **0000** to pair and connect the headset to your phone. In some phones, you may need to make the connection separately after pairing.

When the headset is connected to your phone and is ready for use, the green indicator light flashes about every 5 seconds.

You may be able to set your phone so that the headset connects to it automatically. To activate this feature in a Nokia device, change the paired device settings in the Bluetooth menu.

ENGLISH

Basic use

Wear the headset

Use the clip to attach the headset to your clothing (12).

To use the headset for calling, gently push the earpiece into your ear.

To have the earpiece within easy reach when you do not use the headset, slide the earpiece into the slot on the headset (13).

Calls

To make a call, use your phone in the normal way when the headset is connected to it.

To redial the number you last called (if your phone supports this feature with the headset), when no call is in progress, press the answer/end key twice.

To activate voice dialling (if your phone supports this feature with the headset), when no call is in progress, press and hold the answer/end key for about 2 seconds. Proceed as described in the phone user guide.

To answer or end a call, press the answer/end key. To reject a call, press this key twice.

To adjust the volume, press the volume up or down key.

To mute the microphone, slide the mute key towards the earpiece (14). To unmute the microphone, slide the mute key away from the earpiece.

To switch a call from the headset to a compatible phone, press and hold the answer/end key for about 2 seconds, or switch off the headset. To switch the call back to the headset, press and

ENGLISH

hold the answer/end key for about 2 seconds, or switch on the headset.

Turn vibration on or off

You can set the headset to vibrate when you receive a call.

By default, the vibration is on. To turn the vibration off, press and hold the power key and the volume down key for about 2 seconds. To turn the vibration back on, switch on the headset, and press and hold the power key and the volume up key for about 2 seconds.

Clear settings or reset

To delete the pairings from the headset, press and hold the power key and the answer/end key (for about 5 seconds) until the red and green indicator lights start to alternate.

To reset the headset if it stops functioning, even though it is charged, connect the headset to a charger while you press and hold the answer/end key.

Troubleshooting

If you cannot connect the headset to your compatible phone, check that the headset is charged, switched on, and paired with the phone.

Battery and charger information

This device has an internal, nonremovable, rechargeable battery. Do not attempt to remove the battery from the device as you may damage the

device. This device is intended for use when supplied with power from the following chargers: AC-3, AC-4, AC-5, and DC-4. The exact charger model

ENGLISH

number may vary depending on the type of plug. The plug variant is identified by one of the following: E, EB, X, AR, U, A, C, or UB. The battery can be charged and discharged hundreds of times, but it will eventually wear out. Recharge your battery only with Nokia approved chargers designated for this device. Use of an unapproved charger may present a risk of fire, explosion, leakage, or other hazard.

If a battery is being used for the first time or if the battery has not been used for a prolonged period, it may be necessary to connect the charger, then disconnect and reconnect it to begin charging the battery. If the battery is completely discharged, it may take several minutes before the charging indicator light is displayed.

Unplug the charger from the electrical plug and the device when not in use. Do not leave a fully charged battery connected to a charger, since overcharging may shorten its lifetime. If

left unused, a fully charged battery will lose its charge over time.

Always try to keep the battery between 15°C and 25°C (59°F and 77°F). Extreme temperatures reduce the capacity and lifetime of the battery. A device with a hot or cold battery may not work temporarily. Battery performance is particularly limited in temperatures well below freezing.

Do not dispose of batteries in a fire as they may explode. Batteries may also explode if damaged.

Never use any charger that is damaged.



Important: Battery talk and standby times are estimates only and depend on network conditions, features used, battery age and condition, temperatures to which battery is exposed, and many other factors. The amount of time a device is used for calls will affect its standby time. Likewise, the amount of time that the device is turned on and in the standby mode will affect its talk time.

ENGLISH

Care and maintenance

Your device is a product of superior design and craftsmanship and should be treated with care. The following suggestions will help you protect your warranty coverage.

- Keep the device dry. Precipitation, humidity, and all types of liquids or moisture can contain minerals that will corrode electronic circuits. If your device does get wet, allow it to dry completely.
- Do not use or store the device in dusty, dirty areas. Its moving parts and electronic components can be damaged.
- Do not store the device in hot areas. High temperatures can shorten the life of electronic devices, damage batteries, and warp or melt certain plastics.
- Do not store the device in cold areas. When the device returns to its normal

temperature, moisture can form inside the device and damage electronic circuit boards.

- Do not attempt to open the device.
- Do not drop, knock, or shake the device. Rough handling can break internal circuit boards and fine mechanics.
- Do not use harsh chemicals, cleaning solvents, or strong detergents to clean the device.
- Do not paint the device. Paint can clog the moving parts and prevent proper operation.

These suggestions apply equally to your device, charger, or any accessory. If any device is not working properly, take it to the nearest authorised service facility for service.

ENGLISH



Recycle

The crossed-out wheeled-bin symbol on your product, battery, literature, or packaging reminds you that all electrical and electronic products, batteries, and accumulators must be taken to separate collection at the end of their working life. This requirement applies in the European Union. Do not dispose of these products as unsorted municipal waste. For more environmental information, see the product Eco-Declarations at www.nokia.com/environment.

Always return your used electronic products, batteries, and packaging materials to a dedicated collection point. This way you help prevent uncontrolled waste disposal and promote the recycling of materials. More detailed information is available from the product retailer, local waste authorities, national producer responsibility organisations, or your local Nokia representative. Check how to recycle your Nokia products at www.nokia.com/werecycle, or if browsing on a mobile device, www.nokia.mobi/werecycle.

FCC/Industry Canada notice

This device complies with Part 15 of the FCC Rules. Operation is subject to the following two conditions: 1. This device may not cause harmful interference; and 2. This device must accept any interference received, including interference that may cause undesired operation. This equipment has been tested and found to comply with the limits for a Class B digital device, pursuant to

Part 15 of the FCC Rules. These limits are designed to provide reasonable protection against harmful interference in a residential installation. This equipment generates, uses and can radiate radio frequency energy and, if not installed and used in accordance with the instructions, may cause harmful interference to radio communications. However, there is no guarantee that



ENGLISH



interference will not occur in a particular installation. If this equipment does cause harmful interference to radio or television reception, which can be determined by turning the equipment off and on, the user is encouraged to try to correct the interference by one or more of the following measures: Reorient or relocate the receiving antenna. Increase the separation between the equipment and receiver. Connect the equipment into an outlet on a circuit different from that to which the receiver is connected. Consult the dealer or an experienced radio/TV technician for help. NOTE: FCC Radiation Exposure Statement: This equipment complies with FCC radiation exposure limits set forth for an uncontrolled environment. This transmitter must not be co-located or operating in conjunction with any other antenna or transmitter. NOTE: Changes or modifications not expressly approved by Nokia could void the user's authority to operate the equipment.

