

Prepared by
HW PM Daniel Flinck and Carl Fredrik Leanderson
Contents responsible if other than preparer

Approved by
HW PM Carl Fredrik Leanderson

- **Type number: RD-0090**
- **FCC id: PY7-RD0090**
- **IC id: 4170B-RD0090**

SWR50 Product Label Specification

Contents

1	Printing information.....	2
2	Cutting and Fitting information.....	2
3	Contents and positioning of laser etch printing	2
3.1	Contents.....	2
3.2	Positioning of printing	4
4	REVISION INFORMATION	7

Abstract

This document describes the label printing for Brooks core unit 1286-3328.

1 Printing information

The printing is pre-printed, with serial number and MAC address information only laser etched during production. Preferably, the text shall be gray on black background or black default label color, if possible. The contrast between the label and the font shall be less than it is today, in SP build. The printing shall be sharp and well readable and shall withstand wearing. The background (label for etching) shall mimic the plastic material surface where it is attached as close as possible.

Material can be found in SOMC SPACE system, under reference nr 1284-6529.

2 Cutting and Fitting information


The label shall be well attached and properly fitted to the plastic carrier of the watch and self destructing upon removal attempt, i.e., break up in parts.



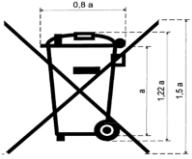
The label edges shall be cut in a distinct way. The label shall not be visible from beneath, e.g., through the cut in the wristband.

3 Contents and positioning of laser etch printing

3.1 Contents

The label shall have the following content, Position and alignment is described in Section 3.

Position	Text	Align	Note
Hidden	Model: SWR50	3,5pt	Product model name
Hidden	1286-3328.1	3,5pt	SPACE-number for the core unit
Backside	Type: RD-0090	3,5pt	
Backside	FCC ID: PY7-RD0090	3,5pt	
Backside	IC: 4170B-RD0090	3,5pt	
Display protective tape		NFC icon height: 3.0mm Isolation zone: 1.5mm	Shall be positioned where the antenna is directed
Hidden	Made in China	3,5pt	
Hidden (next to WEEE dustbin)	yyWww	3,5pt	yy = production year ww = production week
Hidden	BDA: XXXXXXXXXXXX	3,5pt	actual unique BT

			address
Hidden	S/N: YYWWSSPCXXXXXC	3,5pt	*Note 2
Hidden	Li-ion電池のリサイクルにご協力を	3,5pt	Japanese Lithium Ion battery statement Size: 1.0 x 9.5mm
Hidden		Symbol size: 3.0mm text 3,5pt	Japanese TA number and logo
Hidden		height: 5.0mm height: 1.0mm for numbers	CE-mark, symbol height 5.0mm
Hidden (next to yyWww)		height:5.0	Recycling WEEE icon ref.doc. 1003-0743 Min size: 5mm height of cross

Note1: Stylish Sony logo is already debossed in backside mechanics

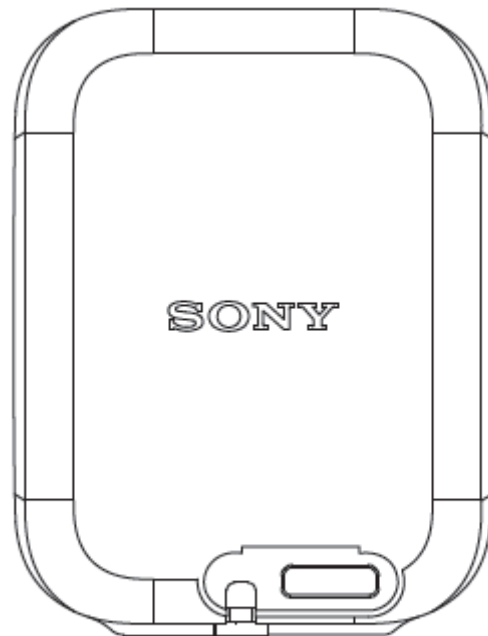
Note2: Serial No according to 4/159 35-LXE 108 179
YYWWSSPCXXXXXC
 YY = Year
 WW = Week of production
 SS = Supplier/site
 PC = Production Line/Product Code
 XXXXXX = Serial value
 C = Checksum (in two positions)

3.2 Positioning of printing

All product information shall be fitted in two labels, one large and one small, in the hidden areas underneath the watchband strap.

3.2.1 Backside information

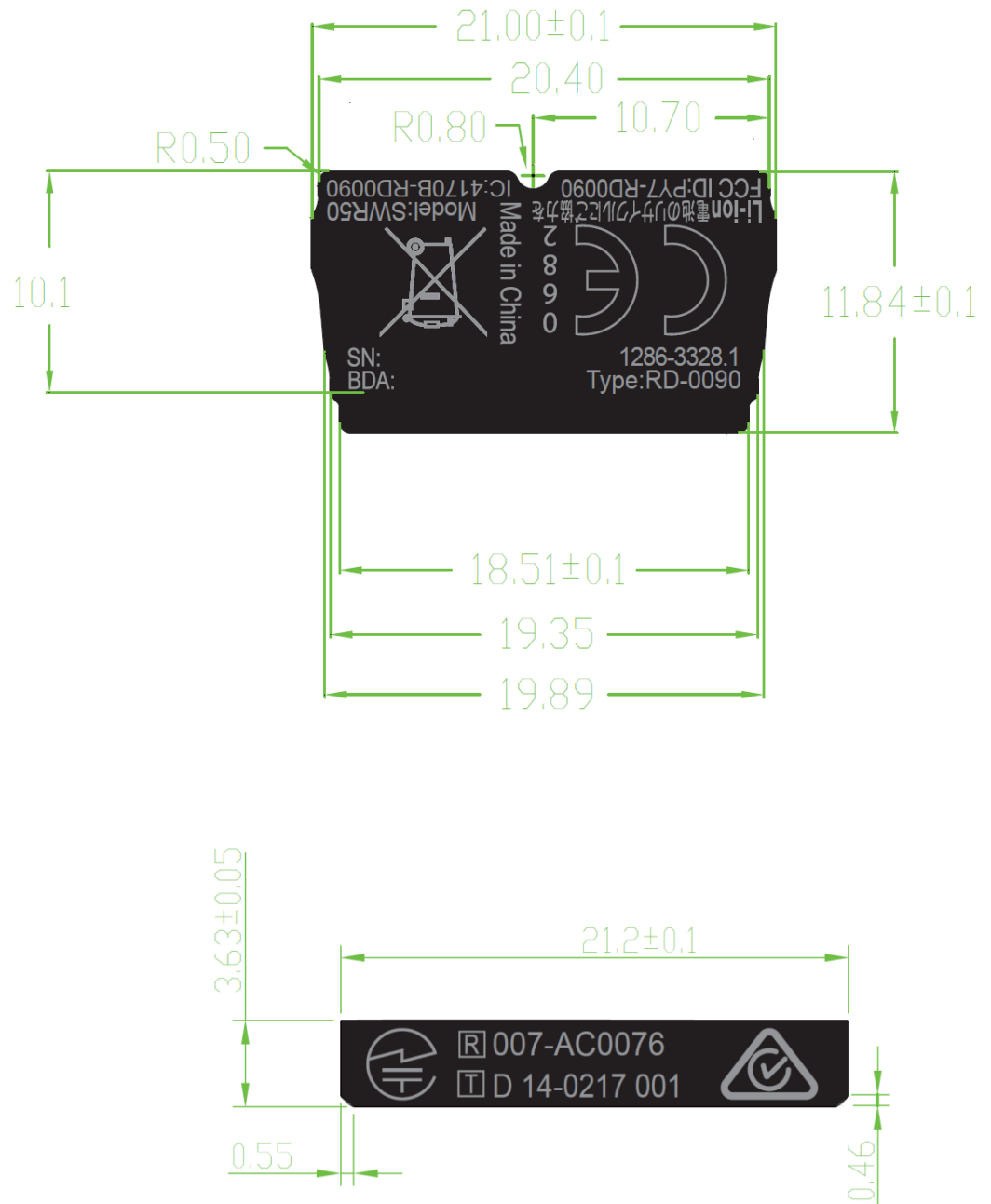
Only the SONY logo shall be visible on the metal backcover.



scale: 1/1

3.2.2 Hidden areas information

There are two hidden areas underneath the watchband on each side of the display on the core unit. The disposition of the text and the dimension of the labels in the hidden areas shall be as follows.



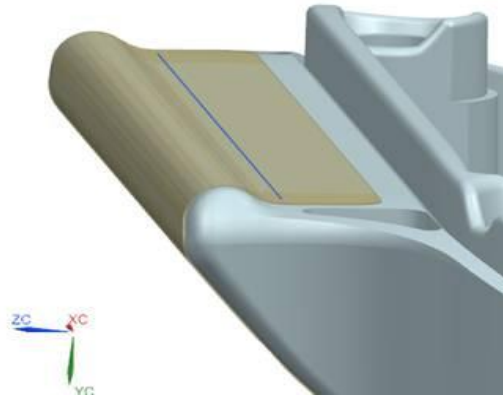
NOTE 1: the serial number (SN) and Bluetooth MAC address numbers as well as the production week, yyWww, will be laser etched on the pre-printed labels during production. Please see the example label below for the placement of the yyWww number.

NOTE 2: the TELEC [R] and JATE [T] numbers should read without any spacers. For the JATE number in the figure above, this means no space shall be present between 'D' and '14' and "0217" and "001". The proper format according to Japan Radio Law and Telecommunications Act is:

R 007-AC0076

T D14-0217001

NOTE 3: SOMC wishes to cut the label as short as possible at the side below the antenna pattern. The idea is to have it covering the antenna pattern, supporting all text (BDA nr and Type at the bottom) and with good adhesion towards the material, | the whole in the wristband, see below.



The large label is placed over the IFA antenna, on top of the device, as illustrated in below figure.



The smaller label, with TELEC and JATE numbers is placed on the bottom part of the plastic body, as shown below.



3.2.3 Display protection tape

The NFC logo, shall be placed where the antenna hotspot is directed. In Brooks the antenna is placed underneath the display and directed upwards, hence the marking needs to be on the Display protection tape.



3.2.4 E-label

No e-label will be deployed

3.2.5 Special Requirements for Local Type Approval

There are no special requirements on the small and large product label on the core unit, due to local type approval (LTA). However, there are LTA requirements that apply for the sales unit (boxing). Sales unit marking is, however, out of scope for this specification.

4 REVISION INFORMATION

<u>Version</u>	<u>Date</u>	<u>Note</u>
1	2014-02-11	First revision
2	2014-02-12	Updated with type numbers and some changes after first GoerTek review
3	2014-02-18	Updated after input from GoerTek
4	2014-03-11	Updated after input from C&M
5	2014-06-16	Updated after input from C&M (CFL)
6	2014-06-23	Updated after input from GTA and GTK. (CFL)
A	2014-08-01	Final revision
B	2014-08-28	Rectified type in the SPACE nr of the core unit in the table to read 1286-3328.1. Added clarification on the TELECOM and JATE number formats in NOTE 2.
C	2014-09-10	Added photos to detail the product label placement.