

Appendix B

GSM850
GSM1900
WCDMA Band IV
WCDMA Band V
LTE Band 4
LTE Band 5
LTE Band 41
WIFI 2.4G
WIFI 5G
BT
NFC

Device Under Test Properties

Model
PY7-63277Y

Exposure Conditions

Phantom Section, TSL	Position, Test Distance [mm]	Band	Group, UID	Frequency [MHz], Channel Number	Conversion Factor	TSL Conductivity [S/m]	TSL Permittivity
RightHead, Head Simulating Liquid	CHEEK, 0.00	GSM 850	GSM, 10028-DAC	836.600, 190	9.84	0.903	42.2

Hardware Setup

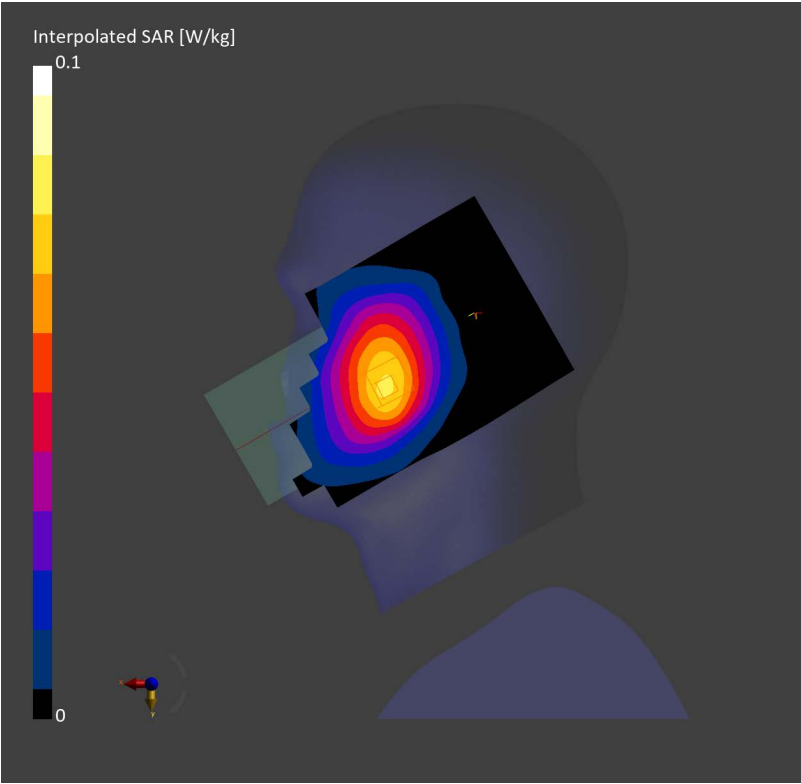
Phantom	TSL	Probe, Calibration Date	DAE, Calibration Date
Twin-SAM V8.0 (30deg probe tilt) - 2168	HSL835	EX3DV4 - SN3624, 2025-01-15	DAE4ip Sn1846, 2024-12-10

Scans Setup

	Area Scan	Zoom Scan
Grid Extents [mm]	120.0 x 210.0	32.0 x 32.0 x 30.0
Grid Steps [mm]	15.0 x 15.0	8.0 x 8.0 x 5.0
Sensor Surface [mm]	3.0	1.4
Graded Grid	N/A	Yes
Grading Ratio	N/A	1.5
MAIA	Y	Y
Surface Detection	VMS + 6p	All points
Scan Method	Measured	Measured

Measurement Results

	Area Scan	Zoom Scan
Date	2025-04-12, 15:13	2025-04-12, 15:18
psSAR1g [W/Kg]	0.068	0.070
psSAR10g [W/Kg]	0.046	0.054
Power Drift [dB]	-0.04	-0.02
Power Scaling	Disabled	Disabled
Scaling Factor [dB]		
TSL Correction	No correction	No correction
M2/M1 [%]		74.6
Dist 3dB Peak [mm]		22.4



Device Under Test Properties

Model
PY7-63277Y

Exposure Conditions

Phantom Section, TSL	Position, Test Distance [mm]	Band	Group, UID	Frequency [MHz], Channel Number	Conversion Factor	TSL Conductivity [S/m]	TSL Permittivity
Flat, Head Simulating Liquid	BACK, 5.00	GSM 850	GSM, 10028-DAC	836.600, 190	9.84	0.908	42.5

Hardware Setup

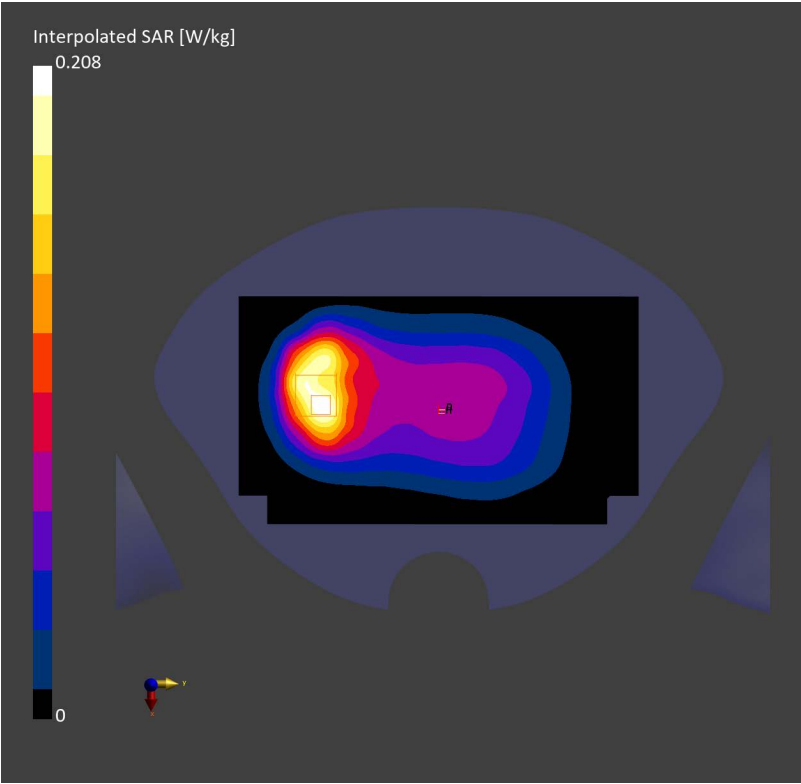
Phantom	TSL	Probe, Calibration Date	DAE, Calibration Date
Twin-SAM V8.0 (30deg probe tilt) – 2168	HSL835	EX3DV4 – SN3624, 2025-01-15	DAE4ip Sn1846, 2024-12-10

Scans Setup

	Area Scan	Zoom Scan
Grid Extents [mm]	120.0 x 210.0	32.0 x 32.0 x 30.0
Grid Steps [mm]	15.0 x 15.0	8.0 x 8.0 x 5.0
Sensor Surface [mm]	3.0	1.4
Graded Grid	N/A	Yes
Grading Ratio	N/A	1.5
MAIA	Y	N/A
Surface Detection	VMS + 6p	VMS + 6p
Scan Method	Measured	Measured

Measurement Results

	Area Scan	Zoom Scan
Date	2025-04-15, 11:53	2025-04-15, 11:56
psSAR1g [W/Kg]	0.176	0.205
psSAR10g [W/Kg]	0.115	0.109
Power Drift [dB]	-0.06	-0.03
Power Scaling	Disabled	Disabled
Scaling Factor [dB]		
TSL Correction	No correction	No correction
M2/M1 [%]		44.9
Dist 3dB Peak [mm]		9.6



Test Laboratory: TOWE Lab

Measurement Report for PY7-63277Y, CHEEK, PCS 1900, GPRS-FDD (TDMA, GMSK, TN 0-1-2-3), Channel 661 (1880.000 MHz)

Device Under Test Properties

Model
PY7-63277Y

Exposure Conditions

Phantom Section, TSL	Position, Test Distance [mm]	Band	Group, UID	Frequency [MHz], Channel Number	Conversion Factor	TSL Conductivity [S/m]	TSL Permittivity
LeftHead, Head Simulating Liquid	CHEEK, 0.00	PCS 1900	GSM, 10028-DAC	1880.000, 661	8.21	1.43	40.8

Hardware Setup

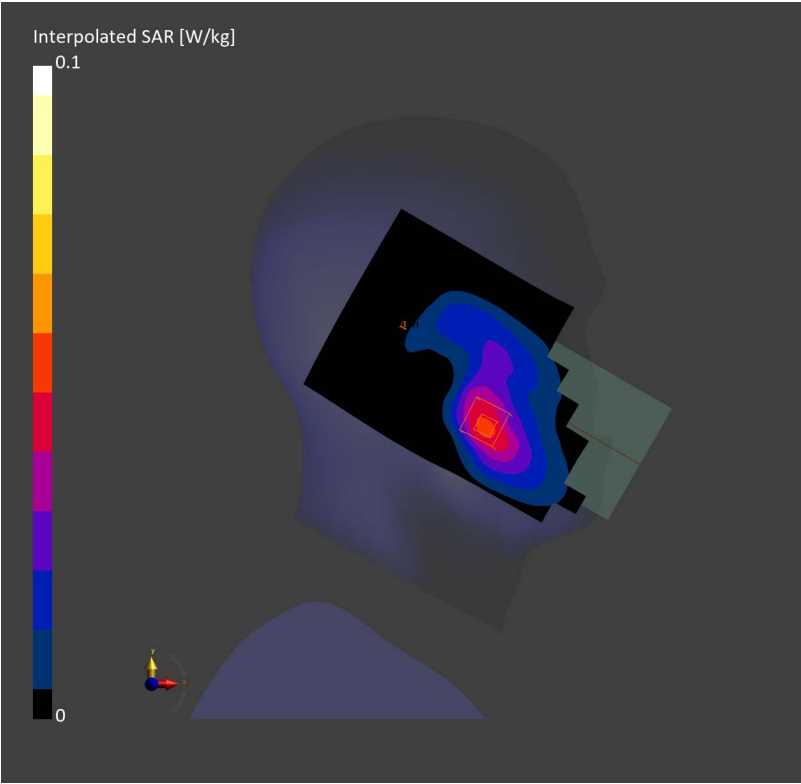
Phantom	TSL	Probe, Calibration Date	DAE, Calibration Date
Twin-SAM V8.0 (30deg probe tilt) - 2168	HSL1900	EX3DV4 - SN3624, 2025-01-15	DAE4ip Sn1846, 2024-12-10

Scans Setup

	Area Scan	Zoom Scan
Grid Extents [mm]	120.0 x 210.0	32.0 x 32.0 x 30.0
Grid Steps [mm]	15.0 x 15.0	8.0 x 8.0 x 5.0
Sensor Surface [mm]	3.0	1.4
Graded Grid	N/A	Yes
Grading Ratio	N/A	1.5
MAIA	Y	Y
Surface Detection	VMS + 6p	All points
Scan Method	Measured	Measured

Measurement Results

	Area Scan	Zoom Scan
Date	2025-04-12, 15:51	2025-04-12, 15:57
psSAR1g [W/Kg]	0.044	0.045
psSAR10g [W/Kg]	0.025	0.028
Power Drift [dB]	0.15	0.04
Power Scaling	Disabled	Disabled
Scaling Factor [dB]		
TSL Correction	No correction	No correction
M2/M1 [%]		63.8
Dist 3dB Peak [mm]		13.0



Device Under Test Properties

Model
PY7-63277Y

Exposure Conditions

Phantom Section, TSL	Position, Test Distance [mm]	Band	Group, UID	Frequency [MHz], Channel Number	Conversion Factor	TSL Conductivity [S/m]	TSL Permittivity
Flat, Head Simulating Liquid	BACK, 5.00	PCS 1900	GSM, 10028-DAC	1880.000, 661	8.21	1.42	40.1

Hardware Setup

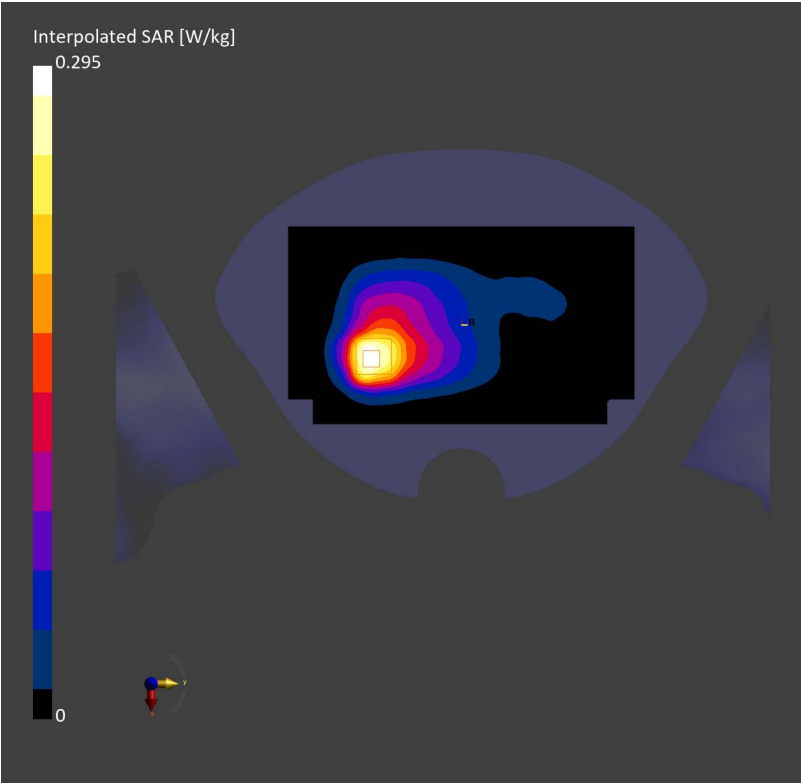
Phantom	TSL	Probe, Calibration Date	DAE, Calibration Date
Twin-SAM V8.0 (30deg probe tilt) - 2168	HSL1900	EX3DV4 - SN3624, 2025-01-15	DAE4ip Sn1846, 2024-12-10

Scans Setup

	Area Scan	Zoom Scan
Grid Extents [mm]	120.0 x 210.0	32.0 x 32.0 x 30.0
Grid Steps [mm]	15.0 x 15.0	8.0 x 8.0 x 5.0
Sensor Surface [mm]	3.0	1.4
Graded Grid	N/A	Yes
Grading Ratio	N/A	1.5
MAIA	N/A	N/A
Surface Detection	VMS + 6p	VMS + 6p
Scan Method	Measured	Measured

Measurement Results

	Area Scan	Zoom Scan
Date	2025-04-15, 12:08	2025-04-15, 12:11
psSAR1g [W/Kg]	0.249	0.263
psSAR10g [W/Kg]	0.144	0.145
Power Drift [dB]	-0.06	-0.02
Power Scaling	Disabled	Disabled
Scaling Factor [dB]		
TSL Correction	No correction	No correction
M2/M1 [%]		54.4
Dist 3dB Peak [mm]		12.2



Device Under Test Properties

Model
PY7-63277Y

Exposure Conditions

Phantom Section, TSL	Position, Test Distance [mm]	Band	Group, UID	Frequency [MHz], Channel Number	Conversion Factor	TSL Conductivity [S/m]	TSL Permittivity
LeftHead, Head Simulating Liquid	CHEEK, 0.00	Band 4	WCDMA, 10457-AAB	1732.400, 1412	8.54	1.38	40.8

Hardware Setup

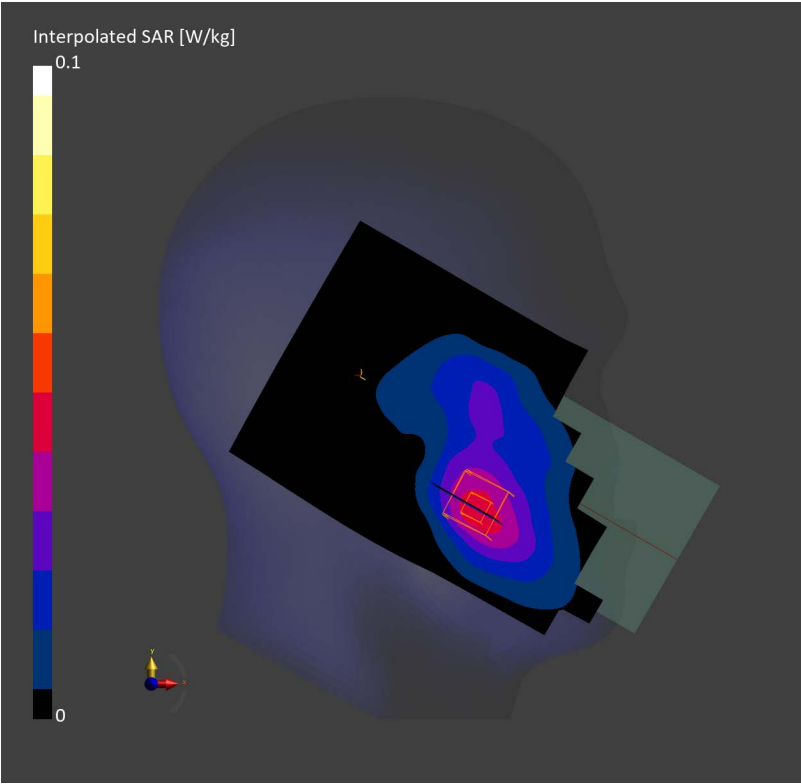
Phantom	TSL	Probe, Calibration Date	DAE, Calibration Date
Twin-SAM V8.0 (30deg probe tilt) - 2168	HSL1750	EX3DV4 - SN3624, 2025-01-15	DAE4ip Sn1846, 2024-12-10

Scans Setup

	Area Scan	Zoom Scan
Grid Extents [mm]	120.0 x 210.0	32.0 x 32.0 x 30.0
Grid Steps [mm]	15.0 x 15.0	8.0 x 8.0 x 5.0
Sensor Surface [mm]	3.0	1.4
Graded Grid	N/A	Yes
Grading Ratio	N/A	1.5
MAIA	Y	Y
Surface Detection	VMS + 6p	All points
Scan Method	Measured	Measured

Measurement Results

	Area Scan	Zoom Scan
Date	2025-04-12, 19:44	2025-04-12, 19:50
psSAR1g [W/Kg]	0.039	0.043
psSAR10g [W/Kg]	0.024	0.027
Power Drift [dB]	0.06	-0.10
Power Scaling	Disabled	Disabled
Scaling Factor [dB]		
TSL Correction	No correction	No correction
M2/M1 [%]		65.3
Dist 3dB Peak [mm]		13.8



Device Under Test Properties

Model
PY7-63277Y

Exposure Conditions

Phantom Section, TSL	Position, Test Distance [mm]	Band	Group, UID	Frequency [MHz], Channel Number	Conversion Factor	TSL Conductivity [S/m]	TSL Permittivity
Flat, Head Simulating Liquid	BACK, 5.00	Band 4	WCDMA, 10457-AAB	1732.400, 1412	8.54	1.39	40.4

Hardware Setup

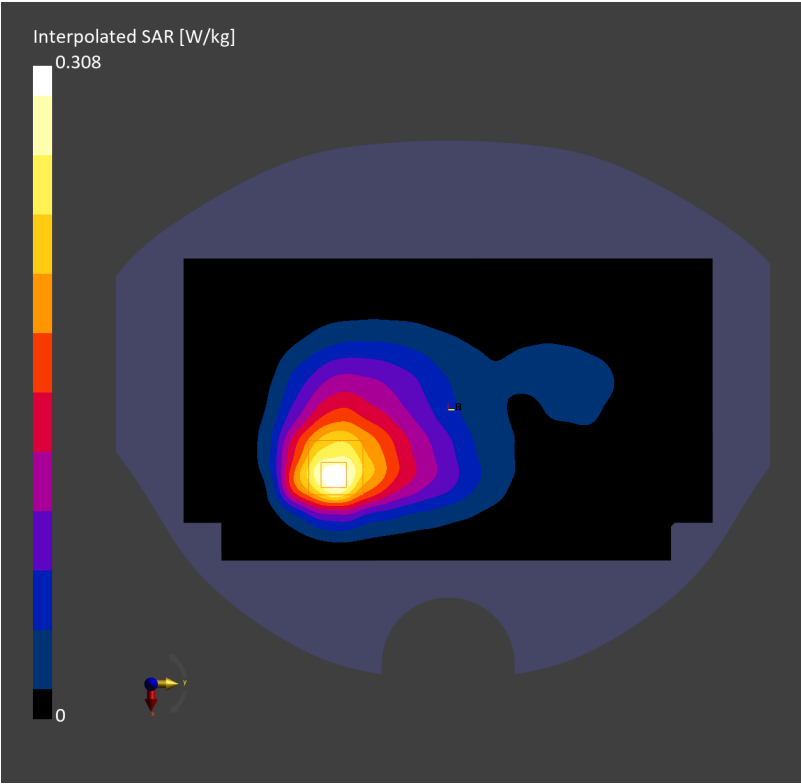
Phantom	TSL	Probe, Calibration Date	DAE, Calibration Date
Twin-SAM V8.0 (30deg probe tilt) – 2168	HSL1750	EX3DV4 – SN3624, 2025-01-15	DAE4ip Sn1846, 2024-12-10

Scans Setup

	Area Scan	Zoom Scan
Grid Extents [mm]	120.0 × 210.0	32.0 × 32.0 × 30.0
Grid Steps [mm]	15.0 × 15.0	8.0 × 8.0 × 5.0
Sensor Surface [mm]	3.0	1.4
Graded Grid	N/A	Yes
Grading Ratio	N/A	1.5
MAIA	N/A	N/A
Surface Detection	VMS + 6p	VMS + 6p
Scan Method	Measured	Measured

Measurement Results

	Area Scan	Zoom Scan
Date	2025-04-15, 13:59	2025-04-15, 14:03
psSAR1g [W/Kg]	0.252	0.264
psSAR10g [W/Kg]	0.145	0.148
Power Drift [dB]	0.01	-0.01
Power Scaling	Disabled	Disabled
Scaling Factor [dB]		
TSL Correction	No correction	No correction
M2/M1 [%]		48.9
Dist 3dB Peak [mm]		12.2



Device Under Test Properties

Model
PY7-63277Y

Exposure Conditions

Phantom Section, TSL	Position, Test Distance [mm]	Band	Group, UID	Frequency [MHz], Channel Number	Conversion Factor	TSL Conductivity [S/m]	TSL Permittivity
RightHead, Head Simulating Liquid	CHEEK, 0.00	Band 5	WCDMA, 10457-AAB	836.400, 4182	9.84	0.903	42.2

Hardware Setup

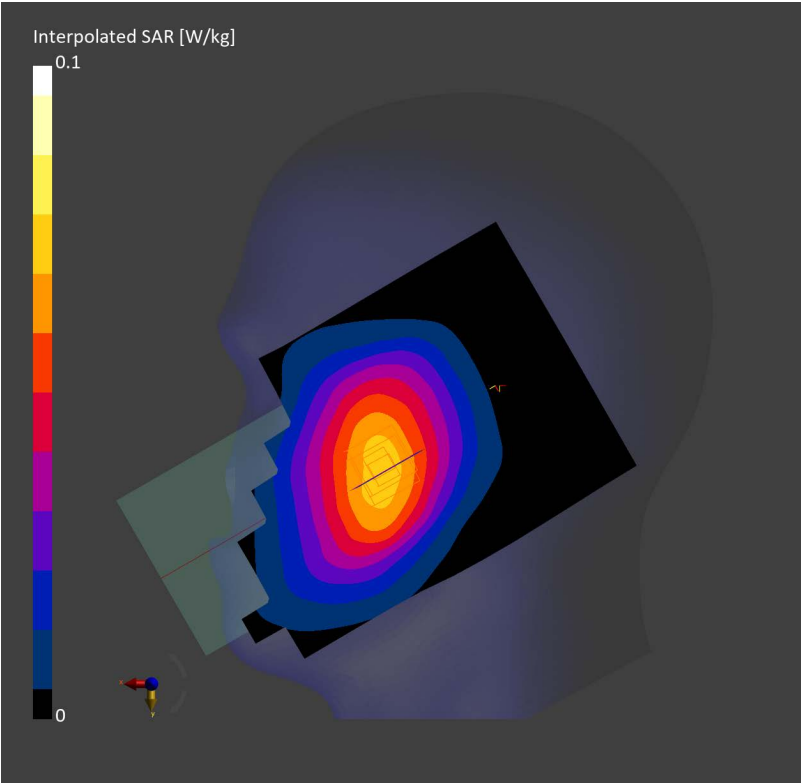
Phantom	TSL	Probe, Calibration Date	DAE, Calibration Date
Twin-SAM V8.0 (30deg probe tilt) – 2168	HSL835	EX3DV4 – SN3624, 2025-01-15	DAE4ip Sn1846, 2024-12-10

Scans Setup

	Area Scan	Zoom Scan
Grid Extents [mm]	120.0 x 210.0	32.0 x 32.0 x 30.0
Grid Steps [mm]	15.0 x 15.0	8.0 x 8.0 x 5.0
Sensor Surface [mm]	3.0	1.4
Graded Grid	N/A	Yes
Grading Ratio	N/A	1.5
MAIA	Y	Y
Surface Detection	VMS + 6p	All points
Scan Method	Measured	Measured

Measurement Results

	Area Scan	Zoom Scan
Date	2025-04-12, 19:16	2025-04-12, 19:21
psSAR1g [W/Kg]	0.063	0.068
psSAR10g [W/Kg]	0.044	0.053
Power Drift [dB]	0.01	-0.01
Power Scaling	Disabled	Disabled
Scaling Factor [dB]		
TSL Correction	No correction	No correction
M2/M1 [%]		66.3
Dist 3dB Peak [mm]		> 16.0



Device Under Test Properties

Model
PY7-63277Y

Exposure Conditions

Phantom Section, TSL	Position, Test Distance [mm]	Band	Group, UID	Frequency [MHz], Channel Number	Conversion Factor	TSL Conductivity [S/m]	TSL Permittivity
Flat, Head Simulating Liquid	BACK, 5.00	Band 5	WCDMA, 10457-AAB	836.400, 4182	9.84	0.908	42.5

Hardware Setup

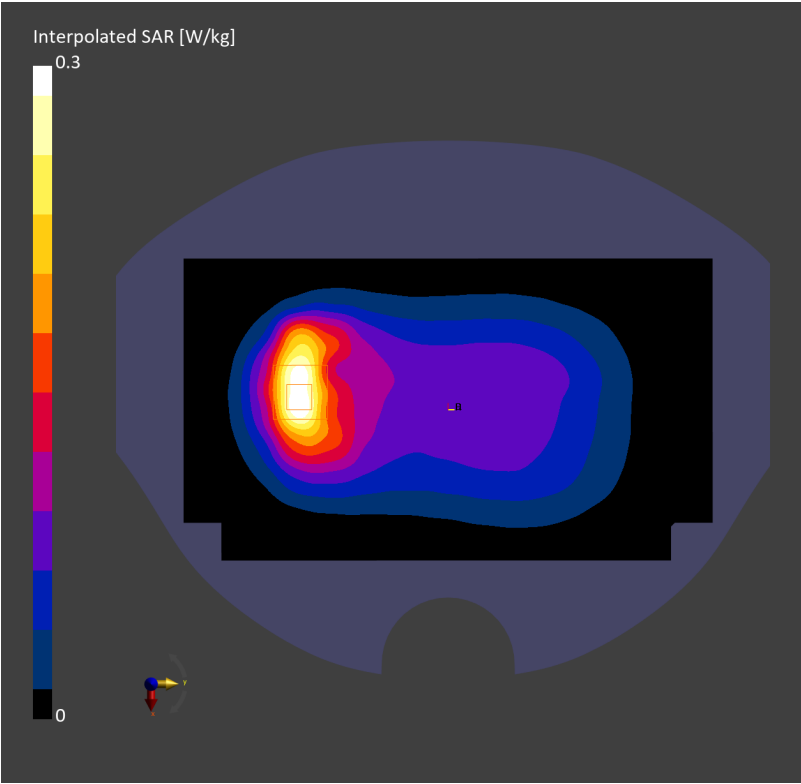
Phantom	TSL	Probe, Calibration Date	DAE, Calibration Date
Twin-SAM V8.0 (30deg probe tilt) – 2168	HSL835	EX3DV4 – SN3624, 2025-01-15	DAE4ip Sn1846, 2024-12-10

Scans Setup

	Area Scan	Zoom Scan
Grid Extents [mm]	120.0 x 210.0	32.0 x 32.0 x 30.0
Grid Steps [mm]	15.0 x 15.0	8.0 x 8.0 x 5.0
Sensor Surface [mm]	3.0	1.4
Graded Grid	N/A	Yes
Grading Ratio	N/A	1.5
MAIA	N/A	N/A
Surface Detection	VMS + 6p	VMS + 6p
Scan Method	Measured	Measured

Measurement Results

	Area Scan	Zoom Scan
Date	2025-04-15, 14:12	2025-04-15, 14:16
psSAR1g [W/Kg]	0.251	0.243
psSAR10g [W/Kg]	0.155	0.132
Power Drift [dB]	0.01	-0.02
Power Scaling	Disabled	Disabled
Scaling Factor [dB]		
TSL Correction	No correction	No correction
M2/M1 [%]		48.4
Dist 3dB Peak [mm]		10.8



Test Laboratory: TOWE Lab

Measurement Report for PY7-63277Y, CHEEK, Band 4, LTE-FDD (SC-FDMA, 1 RB, 20 MHz, QPSK) RBPosition:High AntennaCfg:SISO, Channel 20175 (1732.500 MHz)

Device Under Test Properties

Model
PY7-63277Y

Exposure Conditions

Phantom Section, TSL	Position, Test Distance [mm]	Band	Group, UID	Frequency [MHz], Channel Number	Conversion Factor	TSL Conductivity [S/m]	TSL Permittivity
LeftHead, Head Simulating Liquid	CHEEK, 0.00	Band 4	LTE-FDD, 10169-CAF	1732.500, 20175	8.54	1.38	40.8

Hardware Setup

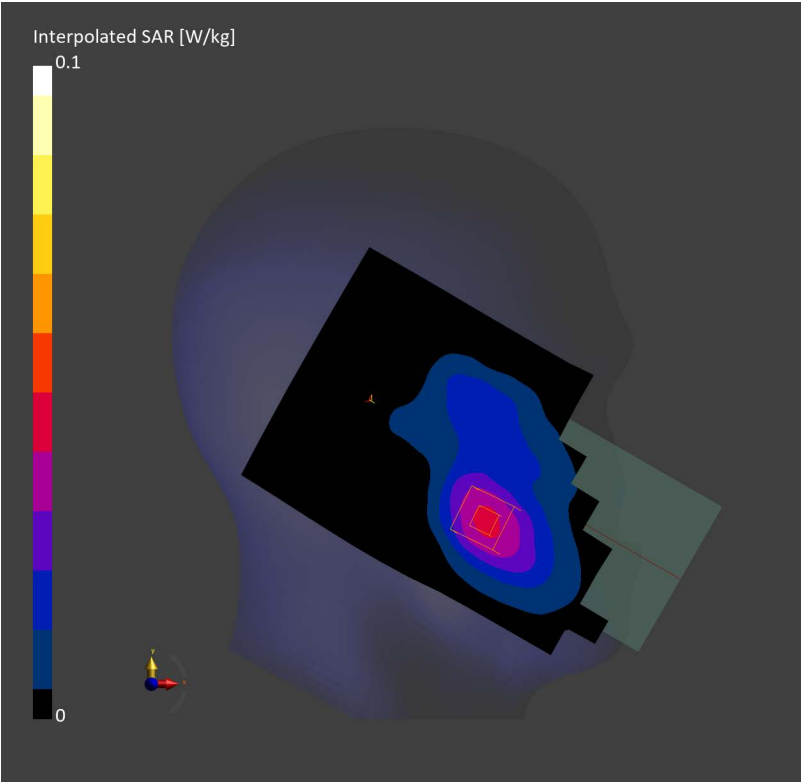
Phantom	TSL	Probe, Calibration Date	DAE, Calibration Date
Twin-SAM V8.0 (30deg probe tilt) - 2168	HSL1750	EX3DV4 - SN3624, 2025-01-15	DAE4ip Sn1846, 2024-12-10

Scans Setup

	Area Scan	Zoom Scan
Grid Extents [mm]	120.0 x 210.0	32.0 x 32.0 x 30.0
Grid Steps [mm]	15.0 x 15.0	8.0 x 8.0 x 5.0
Sensor Surface [mm]	3.0	1.4
Graded Grid	N/A	Yes
Grading Ratio	N/A	1.5
MAIA	Y	Y
Surface Detection	VMS + 6p	All points
Scan Method	Measured	Measured

Measurement Results

	Area Scan	Zoom Scan
Date	2025-04-13, 00:13	2025-04-13, 00:19
psSAR1g [W/Kg]	0.037	0.038
psSAR10g [W/Kg]	0.022	0.025
Power Drift [dB]	0.15	-0.03
Power Scaling	Disabled	Disabled
Scaling Factor [dB]		
TSL Correction	No correction	No correction
M2/M1 [%]		65.5
Dist 3dB Peak [mm]		13.4



Device Under Test Properties

Model
PY7-63277Y

Exposure Conditions

Phantom Section, TSL	Position, Test Distance [mm]	Band	Group, UID	Frequency [MHz], Channel Number	Conversion Factor	TSL Conductivity [S/m]	TSL Permittivity
Flat, Head Simulating Liquid	BACK, 5.00	Band 4	LTE-FDD, 10169-CAF	1732.500, 20175	8.54	1.39	40.4

Hardware Setup

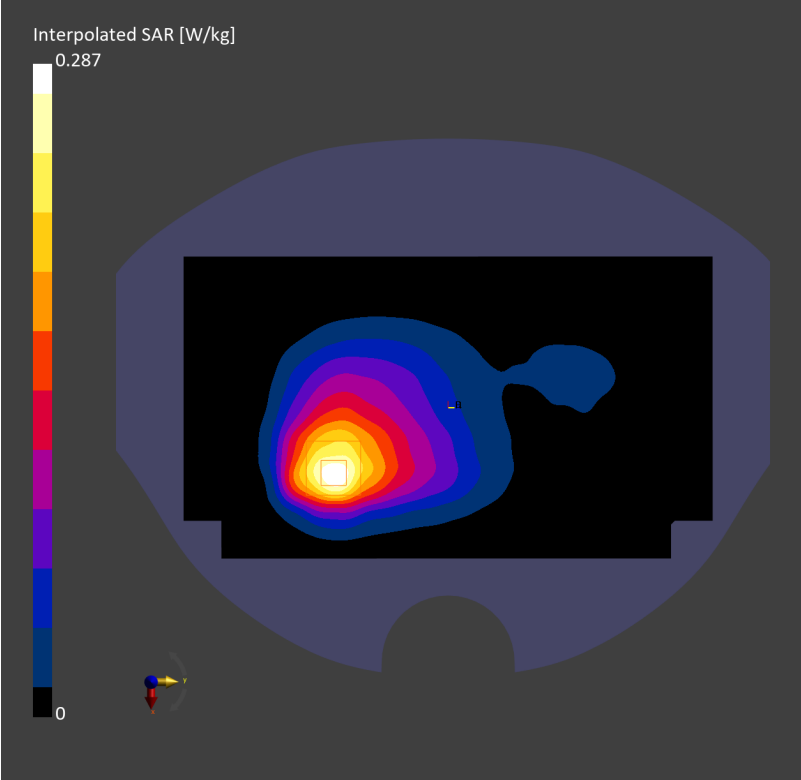
Phantom	TSL	Probe, Calibration Date	DAE, Calibration Date
Twin-SAM V8.0 (30deg probe tilt) - 2168	HSL1750	EX3DV4 - SN3624, 2025-01-15	DAE4ip Sn1846, 2024-12-10

Scans Setup

	Area Scan	Zoom Scan
Grid Extents [mm]	120.0 x 210.0	32.0 x 32.0 x 30.0
Grid Steps [mm]	15.0 x 15.0	8.0 x 8.0 x 1.5
Sensor Surface [mm]	3.0	1.4
Graded Grid	N/A	Yes
Grading Ratio	N/A	1.5
MAIA	N/A	N/A
Surface Detection	VMS + 6p	VMS + 6p
Scan Method	Measured	Measured

Measurement Results

	Area Scan	Zoom Scan
Date	2025-04-15, 14:45	2025-04-15, 14:49
psSAR1g [W/Kg]	0.234	0.245
psSAR10g [W/Kg]	0.134	0.137
Power Drift [dB]	-0.00	0.00
Power Scaling	Disabled	Disabled
Scaling Factor [dB]		
TSL Correction	No correction	No correction
M2/M1 [%]		78.0
Dist 3dB Peak [mm]		12.2



Test Laboratory: TOWE Lab

Measurement Report for PY7-63277Y, CHEEK, Band 5, LTE-FDD (SC-FDMA, 1 RB, 10 MHz, QPSK) RBPosition:Mid AntennaCfg:SISO, Channel 20525 (836.500 MHz)

Device Under Test Properties

Model
PY7-63277Y

Exposure Conditions

Phantom Section, TSL	Position, Test Distance [mm]	Band	Group, UID	Frequency [MHz], Channel Number	Conversion Factor	TSL Conductivity [S/m]	TSL Permittivity
RightHead, Head Simulating Liquid	CHEEK, 0.00	Band 5	LTE-FDD, 10175-CAH	836.500, 20525	9.84	0.903	42.2

Hardware Setup

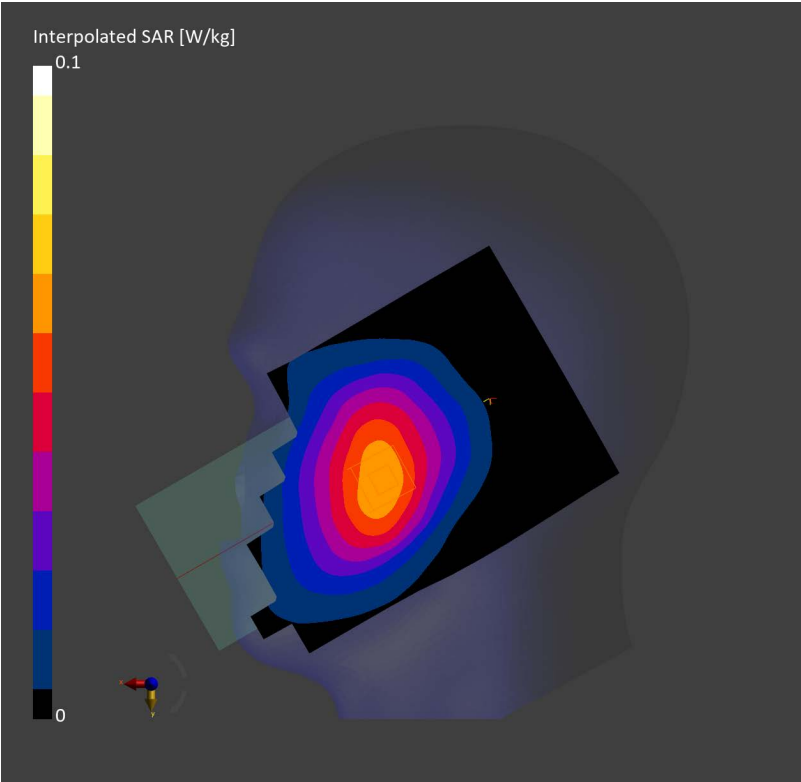
Phantom	TSL	Probe, Calibration Date	DAE, Calibration Date
Twin-SAM V8.0 (30deg probe tilt) - 2168	HSL835	EX3DV4 - SN3624, 2025-01-15	DAE4ip Sn1846, 2024-12-10

Scans Setup

	Area Scan	Zoom Scan
Grid Extents [mm]	120.0 x 210.0	32.0 x 32.0 x 30.0
Grid Steps [mm]	15.0 x 15.0	8.0 x 8.0 x 5.0
Sensor Surface [mm]	3.0	1.4
Graded Grid	N/A	Yes
Grading Ratio	N/A	1.5
MAIA	Y	Y
Surface Detection	VMS + 6p	All points
Scan Method	Measured	Measured

Measurement Results

	Area Scan	Zoom Scan
Date	2025-04-12, 22:22	2025-04-12, 22:27
psSAR1g [W/Kg]	0.057	0.061
psSAR10g [W/Kg]	0.040	0.047
Power Drift [dB]	-0.01	-0.05
Power Scaling	Disabled	Disabled
Scaling Factor [dB]		
TSL Correction	No correction	No correction
M2/M1 [%]		54.5
Dist 3dB Peak [mm]		> 16.0



Test Laboratory: TOWE Lab

Measurement Report for PY7-63277Y, BACK, Band 5, LTE-FDD (SC-FDMA, 1 RB, 10 MHz, QPSK) RBPosition:Mid AntennaCfg:SISO, Channel 20525 (836.500 MHz)

Device Under Test Properties

Model
PY7-63277Y

Exposure Conditions

Phantom Section, TSL	Position, Test Distance [mm]	Band	Group, UID	Frequency [MHz], Channel Number	Conversion Factor	TSL Conductivity [S/m]	TSL Permittivity
Flat, Head Simulating Liquid	BACK, 5.00	Band 5	LTE-FDD, 10175-CAH	836.500, 20525	9.84	0.908	42.5

Hardware Setup

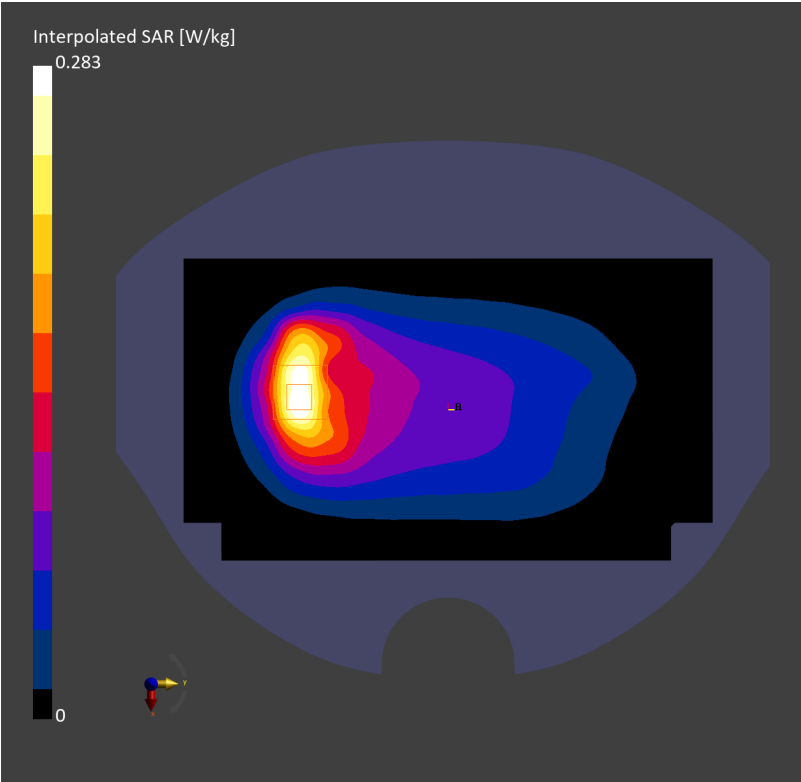
Phantom	TSL	Probe, Calibration Date	DAE, Calibration Date
Twin-SAM V8.0 (30deg probe tilt) - 2168	HSL835	EX3DV4 - SN3624, 2025-01-15	DAE4ip Sn1846, 2024-12-10

Scans Setup

	Area Scan	Zoom Scan
Grid Extents [mm]	120.0 x 210.0	32.0 x 32.0 x 30.0
Grid Steps [mm]	15.0 x 15.0	8.0 x 8.0 x 5.0
Sensor Surface [mm]	3.0	1.4
Graded Grid	N/A	Yes
Grading Ratio	N/A	1.5
MAIA	N/A	N/A
Surface Detection	VMS + 6p	VMS + 6p
Scan Method	Measured	Measured

Measurement Results

	Area Scan	Zoom Scan
Date	2025-04-15, 14:32	2025-04-15, 14:36
psSAR1g [W/Kg]	0.237	0.227
psSAR10g [W/Kg]	0.147	0.125
Power Drift [dB]	0.00	-0.00
Power Scaling	Disabled	Disabled
Scaling Factor [dB]		
TSL Correction	No correction	No correction
M2/M1 [%]		48.6
Dist 3dB Peak [mm]		10.3



Test Laboratory: TOWE Lab

Measurement Report for PY7-63277Y, CHEEK, Band 41, LTE-TDD (SC-FDMA, 1 RB, 20 MHz, QPSK) RBPosition:High AntennaCfg:SISO, Channel 41490 (2680.000 MHz)

Device Under Test Properties

Model
PY7-63277Y

Exposure Conditions

Phantom Section, TSL	Position, Test Distance [mm]	Band	Group, UID	Frequency [MHz], Channel Number	Conversion Factor	TSL Conductivity [S/m]	TSL Permittivity
LeftHead, Head Simulating Liquid	CHEEK, 0.00	Band 41	LTE-TDD, 10172-CAH	2680.000, 41490	7.09	2.09	38.0

Hardware Setup

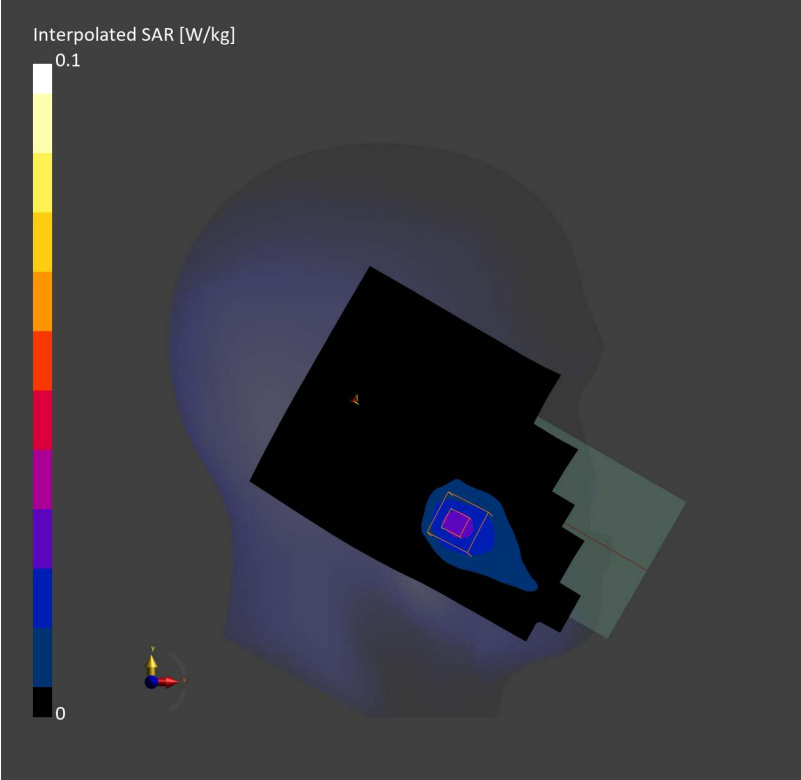
Phantom	TSL	Probe, Calibration Date	DAE, Calibration Date
Twin-SAM V8.0 (30deg probe tilt) - 2168	HSL2600	EX3DV4 - SN7812, 2024-06-25	DAE4ip Sn1846, 2024-12-10

Scans Setup

	Area Scan	Zoom Scan
Grid Extents [mm]	120.0 x 192.0	30.0 x 30.0 x 30.0
Grid Steps [mm]	12.0 x 12.0	5.0 x 5.0 x 5.0
Sensor Surface [mm]	3.0	1.4
Graded Grid	N/A	Yes
Grading Ratio	N/A	1.5
MAIA	Y	Y
Surface Detection	VMS + 6p	All points
Scan Method	Measured	Measured

Measurement Results

	Area Scan	Zoom Scan
Date	2025-04-16, 09:59	2025-04-16, 10:09
psSAR1g [W/Kg]	0.022	0.021
psSAR10g [W/Kg]	0.011	0.01
Power Drift [dB]	0.02	0.10
Power Scaling	Disabled	Disabled
Scaling Factor [dB]		
TSL Correction	No correction	No correction
M2/M1 [%]		48.4
Dist 3dB Peak [mm]		9.1



Device Under Test Properties

Model
PY7-63277Y

Exposure Conditions

Phantom Section, TSL	Position, Test Distance [mm]	Band	Group, UID	Frequency [MHz], Channel Number	Conversion Factor	TSL Conductivity [S/m]	TSL Permittivity
Flat, Head Simulating Liquid	BACK, 5.00	Band 41	LTE-TDD, 10172-CAH	2680.000, 41490	7.09	2.08	38.5

Hardware Setup

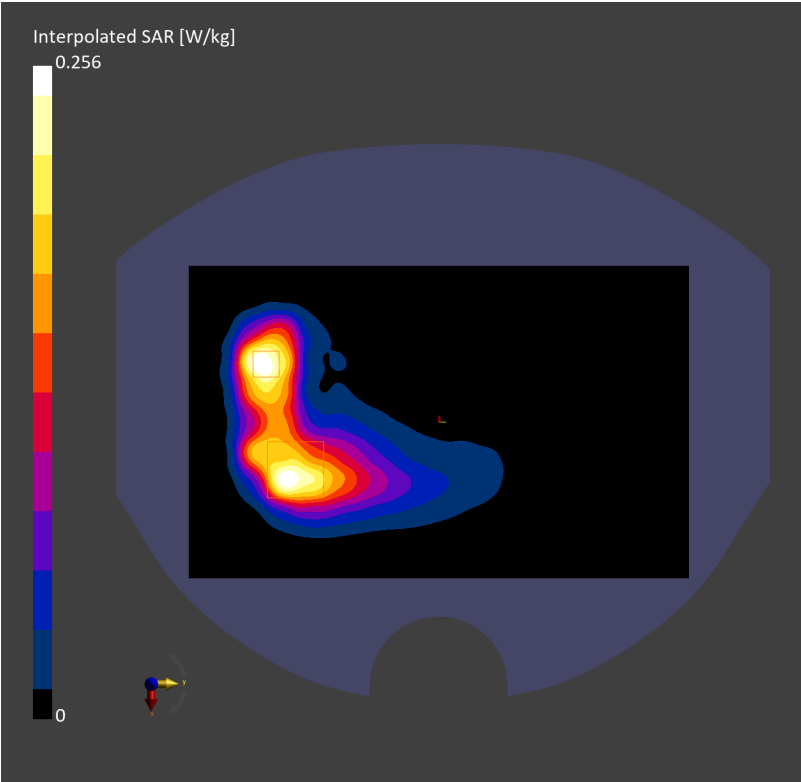
Phantom	TSL	Probe, Calibration Date	DAE, Calibration Date
Twin-SAM V8.0 (30deg probe tilt) - 2168	HSL2600	EX3DV4 - SN7812, 2024-06-25	DAE4ip Sn1846, 2024-12-10

Scans Setup

	Area Scan	Zoom Scan
Grid Extents [mm]	120.0 x 192.0	30.0 x 30.0 x 30.0
Grid Steps [mm]	12.0 x 12.0	5.0 x 5.0 x 5.0
Sensor Surface [mm]	3.0	1.4
Graded Grid	N/A	Yes
Grading Ratio	N/A	1.5
MAIA	Y	N/A
Surface Detection	VMS + 6p	VMS + 6p
Scan Method	Measured	Measured

Measurement Results

	Area Scan	Zoom Scan
Date	2025-04-15, 16:47	2025-04-15, 16:52
psSAR1g [W/Kg]	0.201	0.246
psSAR10g [W/Kg]	0.094	0.102
Power Drift [dB]	-0.06	0.01
Power Scaling	Disabled	Disabled
Scaling Factor [dB]		
TSL Correction	No correction	No correction
M2/M1 [%]		46.7
Dist 3dB Peak [mm]		7.0



Test Laboratory: TOWE Lab

Measurement Report for PY7-63277Y, CHEEK, WLAN 2.4GHz, IEEE 802.11b WiFi 2.4 GHz (DSSS, 1 Mbps), Channel 1 (2412.000 MHz)

Device Under Test Properties

Model
PY7-63277Y

Exposure Conditions

Phantom Section, TSL	Position, Test Distance [mm]	Band	Group, UID	Frequency [MHz], Channel Number	Conversion Factor	TSL Conductivity [S/m]	TSL Permittivity
RightHead, Head Simulating Liquid	CHEEK, 0.00	WLAN 2.4GHz	WLAN, 10012-CAB	2412.000, 1	7.27	1.79	40.8

Hardware Setup

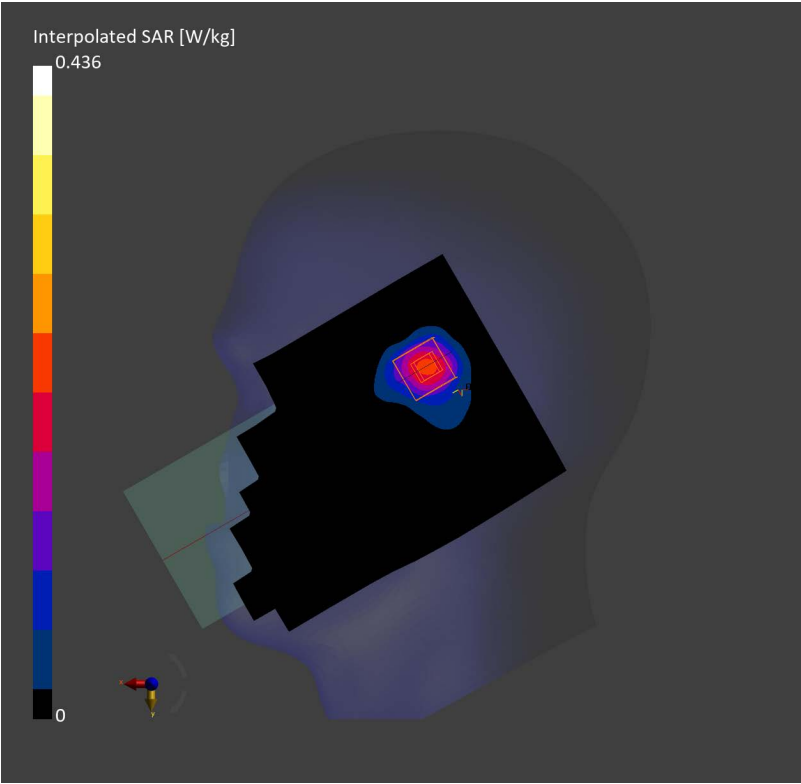
Phantom	TSL	Probe, Calibration Date	DAE, Calibration Date
Twin-SAM V8.0 (30deg probe tilt) – 2168	HSL2450	EX3DV4 – SN7812, 2024-06-25	DAE4ip Sn1846, 2024-12-10

Scans Setup

	Area Scan	Zoom Scan
Grid Extents [mm]	120.0 x 192.0	30.0 x 30.0 x 30.0
Grid Steps [mm]	12.0 x 12.0	5.0 x 5.0 x 5.0
Sensor Surface [mm]	3.0	1.4
Graded Grid	N/A	Yes
Grading Ratio	N/A	1.5
MAIA	Y	Y
Surface Detection	VMS + 6p	VMS + 6p
Scan Method	Measured	Measured

Measurement Results

	Area Scan	Zoom Scan
Date	2025-04-23, 11:44	2025-04-23, 11:50
psSAR1g [W/Kg]	0.181	0.201
psSAR10g [W/Kg]	0.089	0.089
Power Drift [dB]	0.10	-0.04
Power Scaling	Disabled	Disabled
Scaling Factor [dB]		
TSL Correction	No correction	No correction
M2/M1 [%]		44.2
Dist 3dB Peak [mm]		8.1



Device Under Test Properties

Model
PY7-63277Y

Exposure Conditions

Phantom Section, TSL	Position, Test Distance [mm]	Band	Group, UID	Frequency [MHz], Channel Number	Conversion Factor	TSL Conductivity [S/m]	TSL Permittivity
Flat, Head Simulating Liquid	BACK, 5.00	WLAN 2.4GHz	WLAN, 10012-CAB	2412.000, 1	7.27	1.79	40.8

Hardware Setup

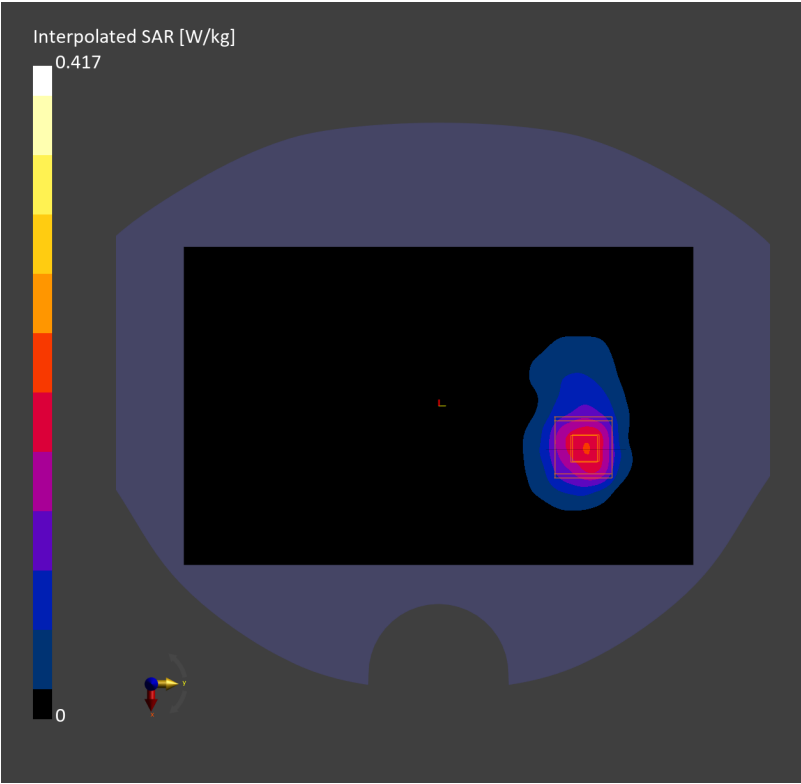
Phantom	TSL	Probe, Calibration Date	DAE, Calibration Date
Twin-SAM V8.0 (30deg probe tilt) - 2168	HSL2450	EX3DV4 - SN7812, 2024-06-25	DAE4ip Sn1846, 2024-12-10

Scans Setup

	Area Scan	Zoom Scan
Grid Extents [mm]	120.0 x 192.0	30.0 x 30.0 x 30.0
Grid Steps [mm]	12.0 x 12.0	5.0 x 5.0 x 5.0
Sensor Surface [mm]	3.0	1.4
Graded Grid	N/A	Yes
Grading Ratio	N/A	1.5
MAIA	Y	N/A
Surface Detection	VMS + 6p	VMS + 6p
Scan Method	Measured	Measured

Measurement Results

	Area Scan	Zoom Scan
Date	2025-04-23, 12:12	2025-04-23, 12:18
psSAR1g [W/Kg]	0.171	0.193
psSAR10g [W/Kg]	0.085	0.082
Power Drift [dB]	-0.05	-0.03
Power Scaling	Disabled	Disabled
Scaling Factor [dB]		
TSL Correction	No correction	No correction
M2/M1 [%]		44.5
Dist 3dB Peak [mm]		8.0



Device Under Test Properties

Model
PY7-63277Y

Exposure Conditions

Phantom Section, TSL	Position, Test Distance [mm]	Band	Group, UID	Frequency [MHz], Channel Number	Conversion Factor	TSL Conductivity [S/m]	TSL Permittivity
LeftHead, Head Simulating Liquid	CHEEK, 0.00	WLAN 2.4GHz	WLAN, 10012-CAB	2437.000, 6	7.27	1.82	40.8

Hardware Setup

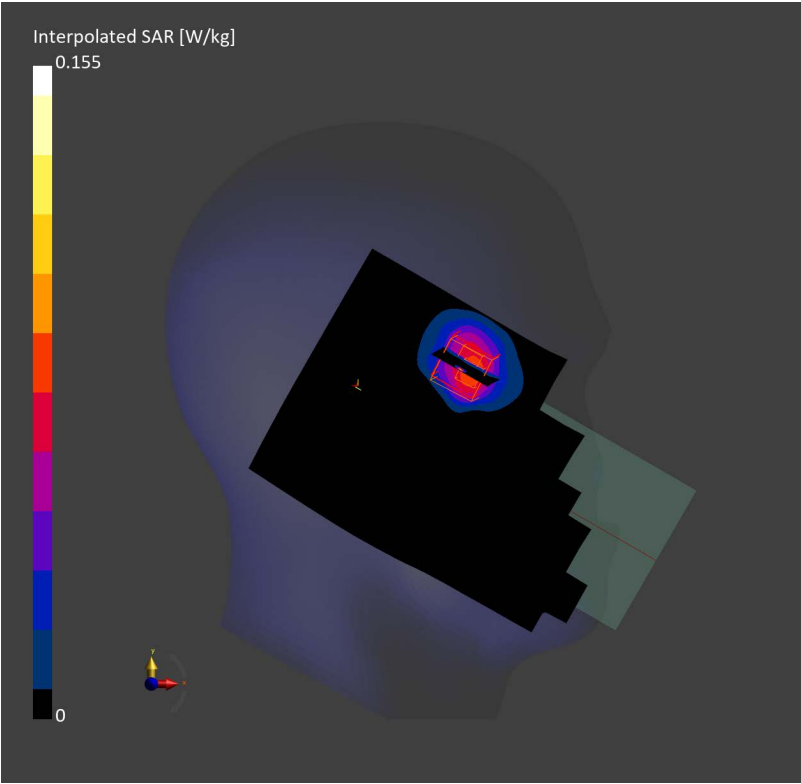
Phantom	TSL	Probe, Calibration Date	DAE, Calibration Date
Twin-SAM V8.0 (30deg probe tilt) – 2168	HSL2450	EX3DV4 – SN7812, 2024-06-25	DAE4ip Sn1846, 2024-12-10

Scans Setup

	Area Scan	Zoom Scan
Grid Extents [mm]	120.0 x 192.0	30.0 x 30.0 x 30.0
Grid Steps [mm]	12.0 x 12.0	5.0 x 5.0 x 5.0
Sensor Surface [mm]	3.0	1.4
Graded Grid	N/A	Yes
Grading Ratio	N/A	1.5
MAIA	Y	Y
Surface Detection	VMS + 6p	VMS + 6p
Scan Method	Measured	Measured

Measurement Results

	Area Scan	Zoom Scan
Date	2025-04-23, 14:40	2025-04-23, 14:47
psSAR1g [W/Kg]	0.069	0.072
psSAR10g [W/Kg]	0.035	0.032
Power Drift [dB]	-0.12	-0.13
Power Scaling	Disabled	Disabled
Scaling Factor [dB]		
TSL Correction	No correction	No correction
M2/M1 [%]		48.8
Dist 3dB Peak [mm]		9.5



Device Under Test Properties

Model
PY7-63277Y

Exposure Conditions

Phantom Section, TSL	Position, Test Distance [mm]	Band	Group, UID	Frequency [MHz], Channel Number	Conversion Factor	TSL Conductivity [S/m]	TSL Permittivity
Flat, Head Simulating Liquid	BACK, 5.00	WLAN 2.4GHz	WLAN, 10012-CAB	2437.000, 6	7.27	1.82	40.8

Hardware Setup

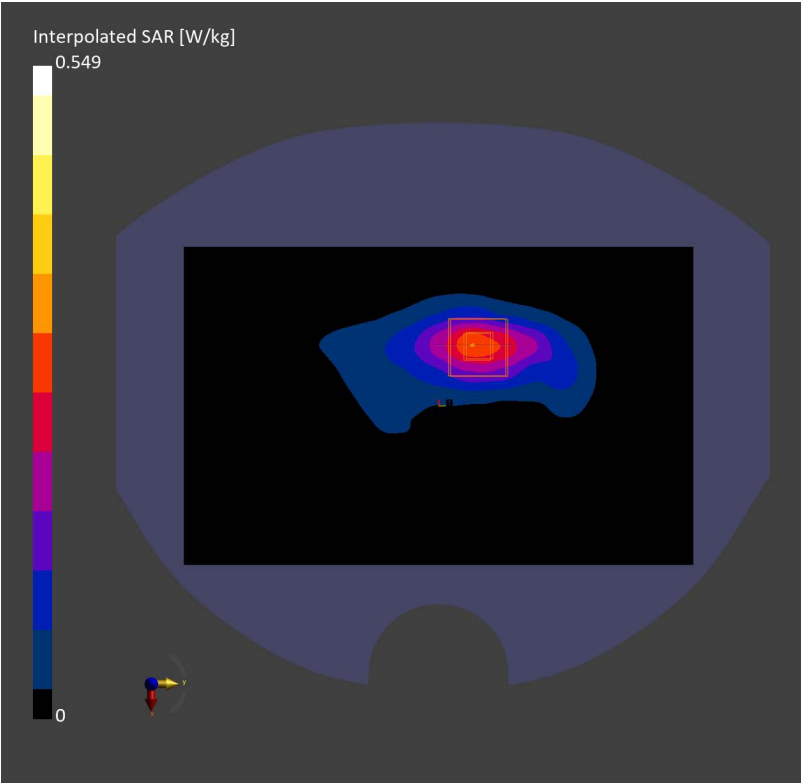
Phantom	TSL	Probe, Calibration Date	DAE, Calibration Date
Twin-SAM V8.0 (30deg probe tilt) – 2168	HSL2450	EX3DV4 – SN7812, 2024-06-25	DAE4ip Sn1846, 2024-12-10

Scans Setup

	Area Scan	Zoom Scan
Grid Extents [mm]	120.0 x 192.0	30.0 x 30.0 x 30.0
Grid Steps [mm]	12.0 x 12.0	5.0 x 5.0 x 5.0
Sensor Surface [mm]	3.0	1.4
Graded Grid	N/A	Yes
Grading Ratio	N/A	1.5
MAIA	N/A	N/A
Surface Detection	VMS + 6p	VMS + 6p
Scan Method	Measured	Measured

Measurement Results

	Area Scan	Zoom Scan
Date	2025-04-23, 14:17	2025-04-23, 14:22
psSAR1g [W/Kg]	0.248	0.256
psSAR10g [W/Kg]	0.121	0.121
Power Drift [dB]	0.00	-0.02
Power Scaling	Disabled	Disabled
Scaling Factor [dB]		
TSL Correction	No correction	No correction
M2/M1 [%]		44.4
Dist 3dB Peak [mm]		9.0



Device Under Test Properties

Model
PY7-63277Y

Exposure Conditions

Phantom Section, TSL	Position, Test Distance [mm]	Band	Group, UID	Frequency [MHz], Channel Number	Conversion Factor	TSL Conductivity [S/m]	TSL Permittivity
RightHead, Head Simulating Liquid	CHEEK, 0.00	WLAN 2.4GHz	WLAN, 10012-CAB	2412.000, 1	7.27	1.79	40.8

Hardware Setup

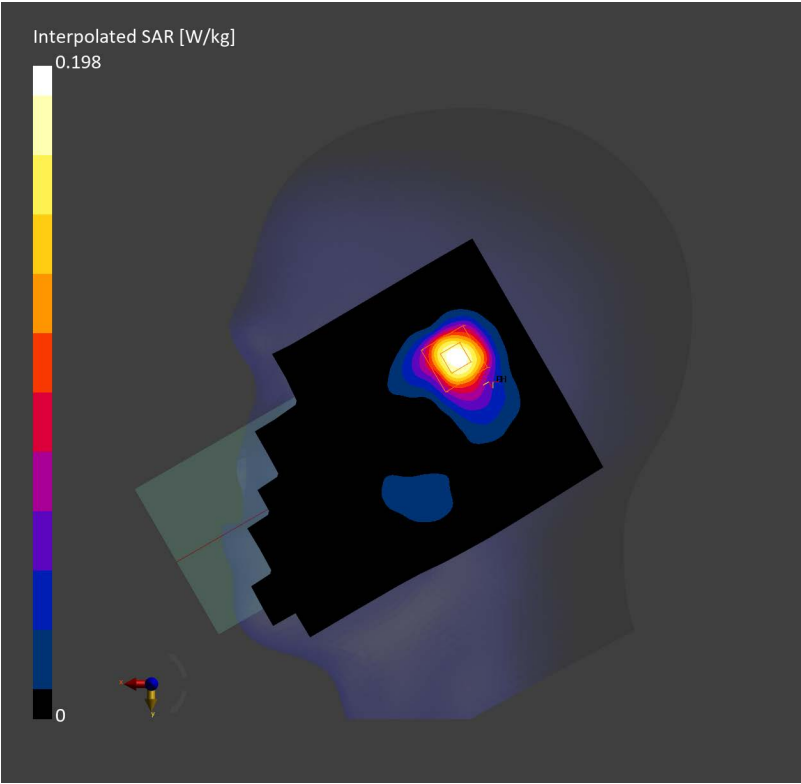
Phantom	TSL	Probe, Calibration Date	DAE, Calibration Date
Twin-SAM V8.0 (30deg probe tilt) – 2168	HSL2450	EX3DV4 – SN7812, 2024-06-25	DAE4ip Sn1846, 2024-12-10

Scans Setup

	Area Scan	Zoom Scan
Grid Extents [mm]	120.0 x 192.0	30.0 x 30.0 x 30.0
Grid Steps [mm]	12.0 x 12.0	5.0 x 5.0 x 5.0
Sensor Surface [mm]	3.0	1.4
Graded Grid	N/A	Yes
Grading Ratio	N/A	1.5
MAIA	Y	Y
Surface Detection	VMS + 6p	VMS + 6p
Scan Method	Measured	Measured

Measurement Results

	Area Scan	Zoom Scan
Date	2025-04-23, 15:28	2025-04-23, 15:34
psSAR1g [W/Kg]	0.152	0.172
psSAR10g [W/Kg]	0.074	0.074
Power Drift [dB]	0.18	0.02
Power Scaling	Disabled	Disabled
Scaling Factor [dB]		
TSL Correction	No correction	No correction
M2/M1 [%]		44.6
Dist 3dB Peak [mm]		7.1



Device Under Test Properties

Model
PY7-63277Y

Exposure Conditions

Phantom Section, TSL	Position, Test Distance [mm]	Band	Group, UID	Frequency [MHz], Channel Number	Conversion Factor	TSL Conductivity [S/m]	TSL Permittivity
Flat, Head Simulating Liquid	BACK, 5.00	WLAN 2.4GHz	WLAN, 10012-CAB	2412.000, 1	7.27	1.79	40.8

Hardware Setup

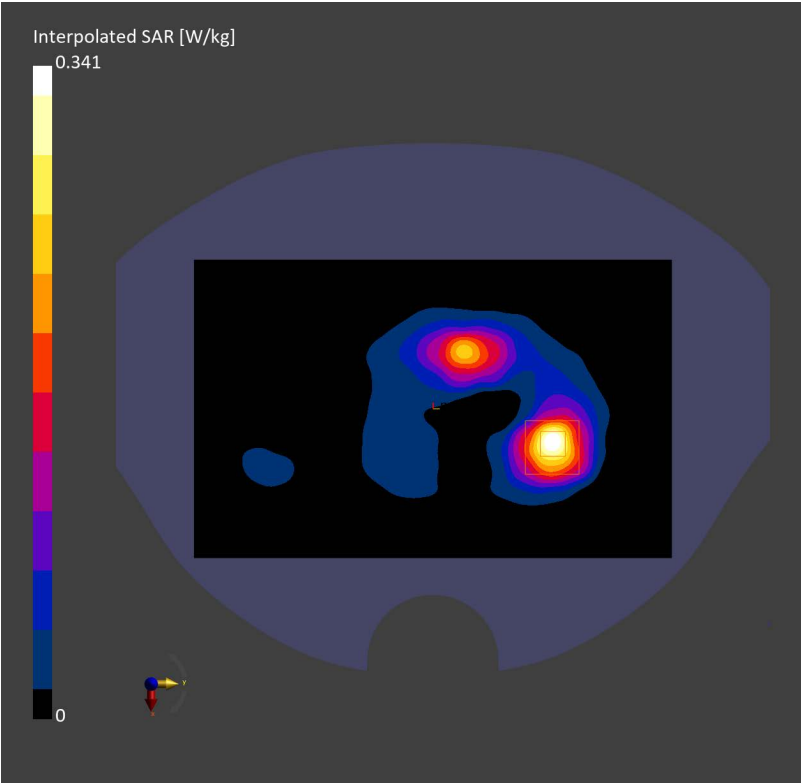
Phantom	TSL	Probe, Calibration Date	DAE, Calibration Date
Twin-SAM V8.0 (30deg probe tilt) – 2168	HSL2450	EX3DV4 – SN7812, 2024-06-25	DAE4ip Sn1846, 2024-12-10

Scans Setup

	Area Scan	Zoom Scan
Grid Extents [mm]	120.0 x 192.0	30.0 x 30.0 x 30.0
Grid Steps [mm]	12.0 x 12.0	5.0 x 5.0 x 5.0
Sensor Surface [mm]	3.0	1.4
Graded Grid	N/A	Yes
Grading Ratio	N/A	1.5
MAIA	N/A	N/A
Surface Detection	VMS + 6p	VMS + 6p
Scan Method	Measured	Measured

Measurement Results

	Area Scan	Zoom Scan
Date	2025-04-23, 15:51	2025-04-23, 15:57
psSAR1g [W/Kg]	0.256	0.279
psSAR10g [W/Kg]	0.118	0.121
Power Drift [dB]	0.08	-0.03
Power Scaling	Disabled	Disabled
Scaling Factor [dB]		
TSL Correction	No correction	No correction
M2/M1 [%]		48.8
Dist 3dB Peak [mm]		8.0



Device Under Test Properties

Model
PY7-63277Y

Exposure Conditions

Phantom Section, TSL	Position, Test Distance [mm]	Band	Group, UID	Frequency [MHz], Channel Number	Conversion Factor	TSL Conductivity [S/m]	TSL Permittivity
RightHead, Head Simulating Liquid	TILT, 0.00	WLAN 5GHz	WLAN, 10544-AAD	5290.000, 58	5.25	4.82	35.8

Hardware Setup

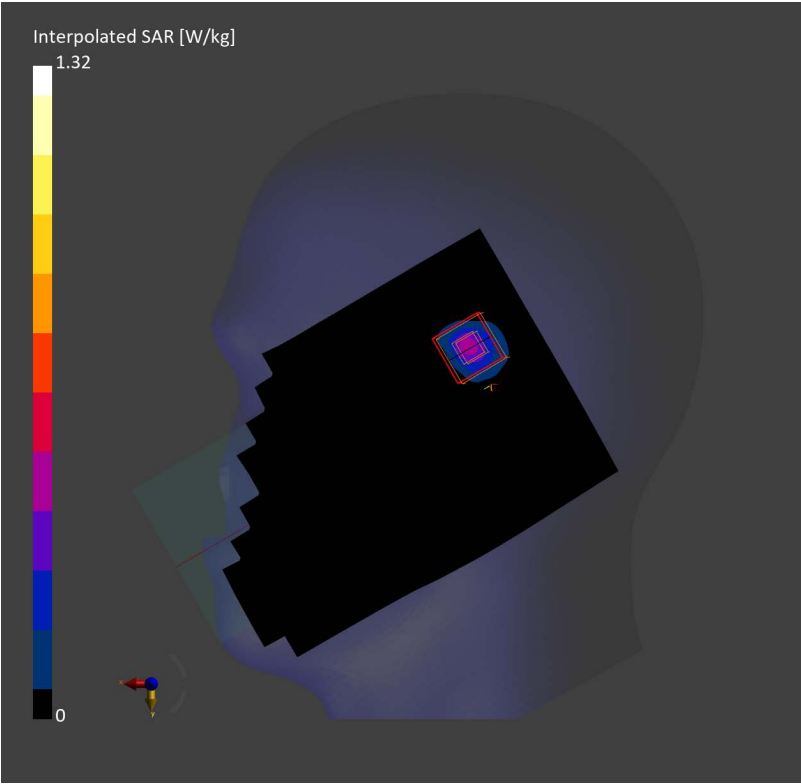
Phantom	TSL	Probe, Calibration Date	DAE, Calibration Date
Twin-SAM V8.0 (30deg probe tilt) – 2168	HSL5GHz	EX3DV4 – SN7858, 2025-01-15	DAE4ip Sn1846, 2024-12-10

Scans Setup

	Area Scan	Zoom Scan
Grid Extents [mm]	120.0 x 200.0	24.0 x 24.0 x 22.0
Grid Steps [mm]	10.0 x 10.0	4.0 x 4.0 x 2.0
Sensor Surface [mm]	3.0	1.4
Graded Grid	N/A	Yes
Grading Ratio	N/A	1.4
MAIA	Y	Y
Surface Detection	VMS + 6p	VMS + 6p
Scan Method	Measured	Measured

Measurement Results

	Area Scan	Zoom Scan
Date	2025-04-24, 17:48	2025-04-24, 17:55
psSAR1g [W/Kg]	0.325	0.354
psSAR10g [W/Kg]	0.099	0.098
Power Drift [dB]	0.05	0.06
Power Scaling	Disabled	Disabled
Scaling Factor [dB]		
TSL Correction	No correction	No correction
M2/M1 [%]		56.1
Dist 3dB Peak [mm]		6.7



Device Under Test Properties

Model
PY7-63277Y

Exposure Conditions

Phantom Section, TSL	Position, Test Distance [mm]	Band	Group, UID	Frequency [MHz], Channel Number	Conversion Factor	TSL Conductivity [S/m]	TSL Permittivity
RightHead, Head Simulating Liquid	TILT, 0.00	WLAN 5GHz	WLAN, 10554-AAE	5570.000, 114	4.65	5.12	35.0

Hardware Setup

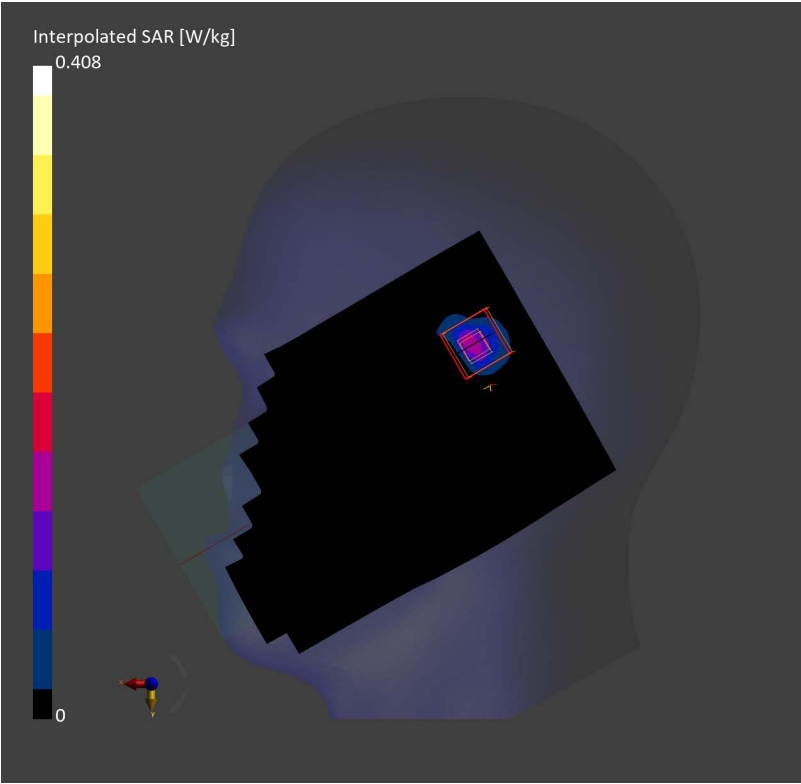
Phantom	TSL	Probe, Calibration Date	DAE, Calibration Date
Twin-SAM V8.0 (30deg probe tilt) – 2168	HSL5GHz	EX3DV4 – SN7858, 2025-01-15	DAE4ip Sn1846, 2024-12-10

Scans Setup

	Area Scan	Zoom Scan
Grid Extents [mm]	120.0 x 200.0	24.0 x 24.0 x 22.0
Grid Steps [mm]	10.0 x 10.0	4.0 x 4.0 x 2.0
Sensor Surface [mm]	3.0	1.4
Graded Grid	N/A	Yes
Grading Ratio	N/A	1.4
MAIA	Y	Y
Surface Detection	VMS + 6p	VMS + 6p
Scan Method	Measured	Measured

Measurement Results

	Area Scan	Zoom Scan
Date	2025-04-25, 12:03	2025-04-25, 12:10
psSAR1g [W/Kg]	0.101	0.098
psSAR10g [W/Kg]	0.030	0.024
Power Drift [dB]	0.16	0.01
Power Scaling	Disabled	Disabled
Scaling Factor [dB]		
TSL Correction	No correction	No correction
M2/M1 [%]		54.9
Dist 3dB Peak [mm]		6.6



Device Under Test Properties

Model
PY7-63277Y

Exposure Conditions

Phantom Section, TSL	Position, Test Distance [mm]	Band	Group, UID	Frequency [MHz], Channel Number	Conversion Factor	TSL Conductivity [S/m]	TSL Permittivity
RightHead, Head Simulating Liquid	TILT, 0.00	WLAN 5GHz	WLAN, 10544-AAD	5775.000, 155	4.75	5.47	34.5

Hardware Setup

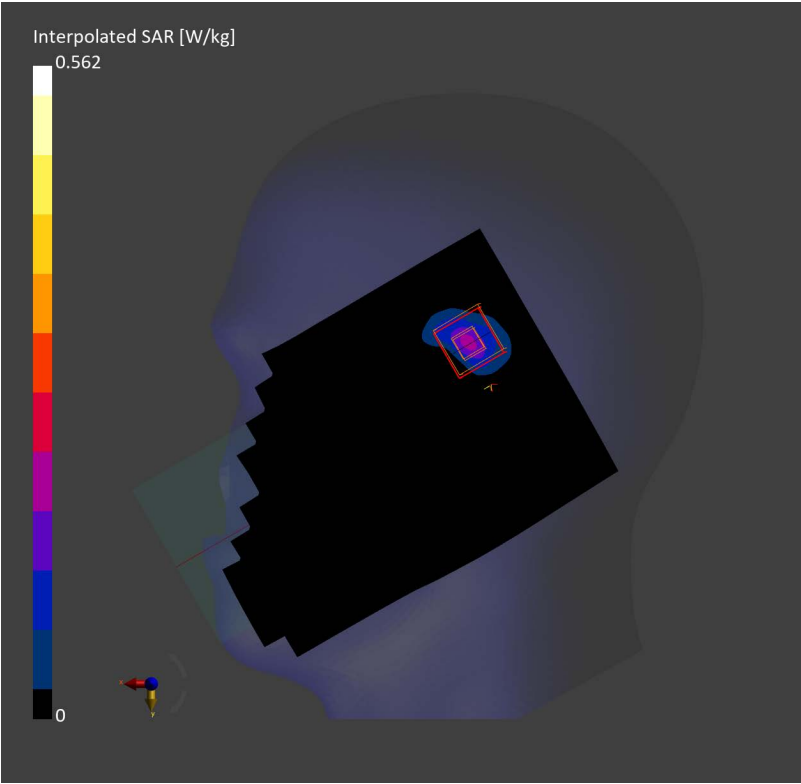
Phantom	TSL	Probe, Calibration Date	DAE, Calibration Date
Twin-SAM V8.0 (30deg probe tilt) – 2168	HSL5GHz	EX3DV4 – SN7858, 2025-01-15	DAE4ip Sn1846, 2024-12-10

Scans Setup

	Area Scan	Zoom Scan
Grid Extents [mm]	120.0 x 200.0	24.0 x 24.0 x 22.0
Grid Steps [mm]	10.0 x 10.0	4.0 x 4.0 x 2.0
Sensor Surface [mm]	3.0	1.4
Graded Grid	N/A	Yes
Grading Ratio	N/A	1.4
MAIA	Y	Y
Surface Detection	VMS + 6p	VMS + 6p
Scan Method	Measured	Measured

Measurement Results

	Area Scan	Zoom Scan
Date	2025-04-26, 11:38	2025-04-26, 11:45
psSAR1g [W/Kg]	0.136	0.128
psSAR10g [W/Kg]	0.043	0.035
Power Drift [dB]	0.14	-0.14
Power Scaling	Disabled	Disabled
Scaling Factor [dB]		
TSL Correction	No correction	No correction
M2/M1 [%]		54.3
Dist 3dB Peak [mm]		6.5



Device Under Test Properties

Model
PY7-63277Y

Exposure Conditions

Phantom Section, TSL	Position, Test Distance [mm]	Band	Group, UID	Frequency [MHz], Channel Number	Conversion Factor	TSL Conductivity [S/m]	TSL Permittivity
Flat, Head Simulating Liquid	BACK, 5.00	WLAN 5GHz	WLAN, 10544-AAD	5290.000, 58	5.25	4.82	35.8

Hardware Setup

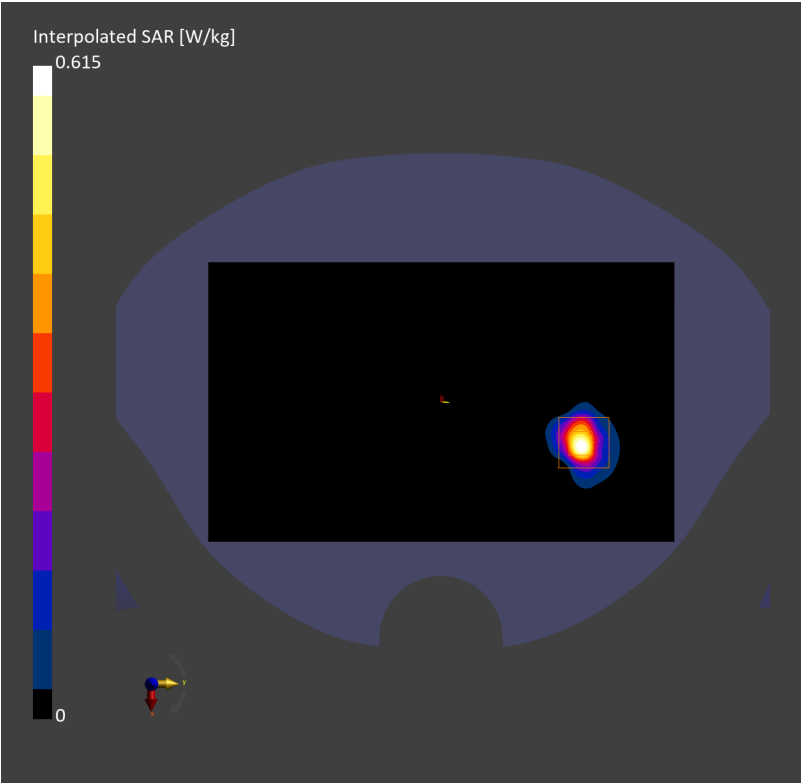
Phantom	TSL	Probe, Calibration Date	DAE, Calibration Date
Twin-SAM V8.0 (30deg probe tilt) – 2168	HSL5GHz	EX3DV4 – SN7858, 2025-01-15	DAE4ip Sn1846, 2024-12-10

Scans Setup

	Area Scan	Zoom Scan
Grid Extents [mm]	120.0 x 200.0	24.0 x 24.0 x 22.0
Grid Steps [mm]	10.0 x 10.0	4.0 x 4.0 x 2.0
Sensor Surface [mm]	3.0	1.4
Graded Grid	N/A	Yes
Grading Ratio	N/A	1.4
MAIA	Y	Y
Surface Detection	VMS + 6p	VMS + 6p
Scan Method	Measured	Measured

Measurement Results

	Area Scan	Zoom Scan
Date	2025-04-24, 19:49	2025-04-24, 19:56
psSAR1g [W/Kg]	0.383	0.415
psSAR10g [W/Kg]	0.105	0.106
Power Drift [dB]	0.01	-0.06
Power Scaling	Disabled	Disabled
Scaling Factor [dB]		
TSL Correction	No correction	No correction
M2/M1 [%]		51.8
Dist 3dB Peak [mm]		5.7



Device Under Test Properties

Model
PY7-63277Y

Exposure Conditions

Phantom Section, TSL	Position, Test Distance [mm]	Band	Group, UID	Frequency [MHz], Channel Number	Conversion Factor	TSL Conductivity [S/m]	TSL Permittivity
Flat, Head Simulating Liquid	BACK, 5.00	WLAN 5GHz	WLAN, 10554-AAE	5570.000, 114	4.65	5.12	35.0

Hardware Setup

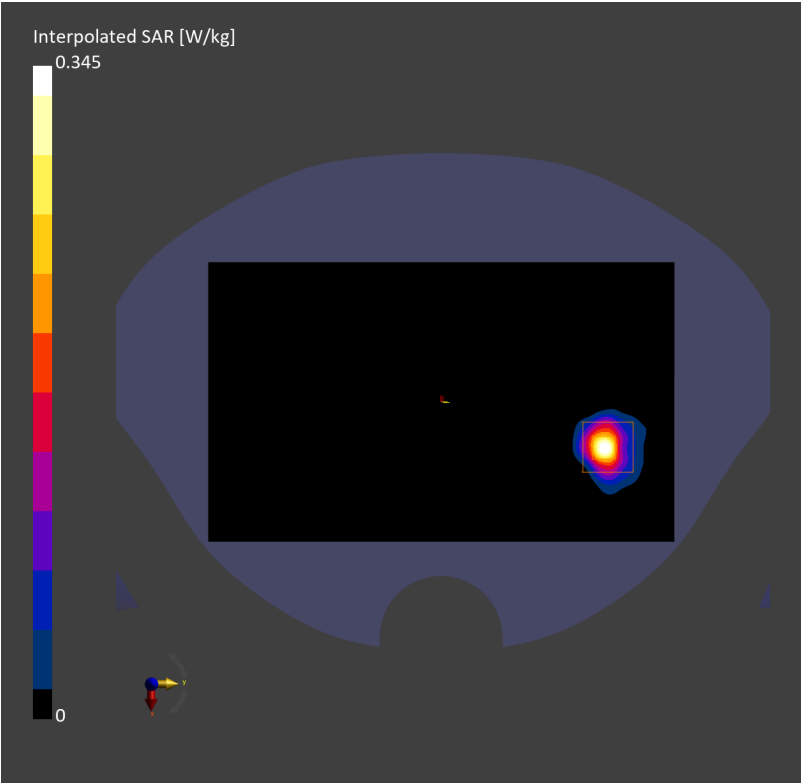
Phantom	TSL	Probe, Calibration Date	DAE, Calibration Date
Twin-SAM V8.0 (30deg probe tilt) – 2168	HSL5GHz	EX3DV4 – SN7858, 2025-01-15	DAE4ip Sn1846, 2024-12-10

Scans Setup

	Area Scan	Zoom Scan
Grid Extents [mm]	120.0 x 200.0	24.0 x 24.0 x 22.0
Grid Steps [mm]	10.0 x 10.0	4.0 x 4.0 x 2.0
Sensor Surface [mm]	3.0	1.4
Graded Grid	N/A	Yes
Grading Ratio	N/A	1.4
MAIA	Y	Y
Surface Detection	VMS + 6p	VMS + 6p
Scan Method	Measured	Measured

Measurement Results

	Area Scan	Zoom Scan
Date	2025-04-25, 12:35	2025-04-25, 12:42
psSAR1g [W/Kg]	0.217	0.221
psSAR10g [W/Kg]	0.061	0.057
Power Drift [dB]	0.03	-0.01
Power Scaling	Disabled	Disabled
Scaling Factor [dB]		
TSL Correction	No correction	No correction
M2/M1 [%]		47.6
Dist 3dB Peak [mm]		5.2



Device Under Test Properties

Model
PY7-63277Y

Exposure Conditions

Phantom Section, TSL	Position, Test Distance [mm]	Band	Group, UID	Frequency [MHz], Channel Number	Conversion Factor	TSL Conductivity [S/m]	TSL Permittivity
Flat, Head Simulating Liquid	BACK, 5.00	WLAN 5GHz	WLAN, 10544-AAD	5775.000, 155	4.75	5.47	34.5

Hardware Setup

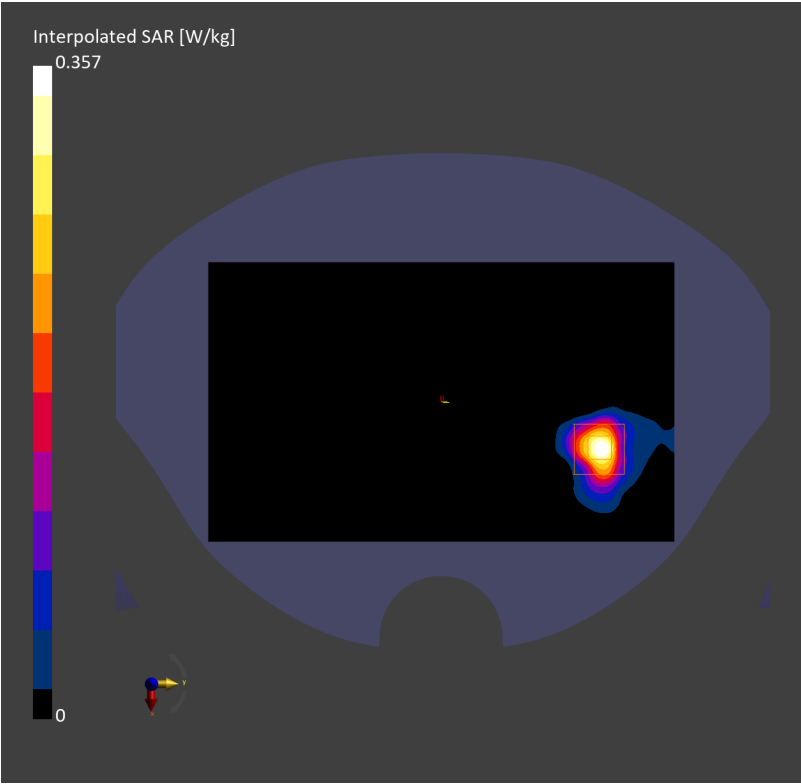
Phantom	TSL	Probe, Calibration Date	DAE, Calibration Date
Twin-SAM V8.0 (30deg probe tilt) – 2168	HSL5GHz	EX3DV4 – SN7858, 2025-01-15	DAE4ip Sn1846, 2024-12-10

Scans Setup

	Area Scan	Zoom Scan
Grid Extents [mm]	120.0 x 200.0	24.0 x 24.0 x 22.0
Grid Steps [mm]	10.0 x 10.0	4.0 x 4.0 x 2.0
Sensor Surface [mm]	3.0	1.4
Graded Grid	N/A	Yes
Grading Ratio	N/A	1.4
MAIA	Y	Y
Surface Detection	VMS + 6p	VMS + 6p
Scan Method	Measured	Measured

Measurement Results

	Area Scan	Zoom Scan
Date	2025-04-26, 14:48	2025-04-26, 14:55
psSAR1g [W/Kg]	0.250	0.244
psSAR10g [W/Kg]	0.080	0.067
Power Drift [dB]	-0.05	0.04
Power Scaling	Disabled	Disabled
Scaling Factor [dB]		
TSL Correction	No correction	No correction
M2/M1 [%]		48.1
Dist 3dB Peak [mm]		6.3



Device Under Test Properties

Model
PY7-63277Y

Exposure Conditions

Phantom Section, TSL	Position, Test Distance [mm]	Band	Group, UID	Frequency [MHz], Channel Number	Conversion Factor	TSL Conductivity [S/m]	TSL Permittivity
Flat, Head Simulating Liquid	BACK, 5.00	WLAN 5GHz	WLAN, 10544-AAD	5210.000, 42	5.25	4.79	35.9

Hardware Setup

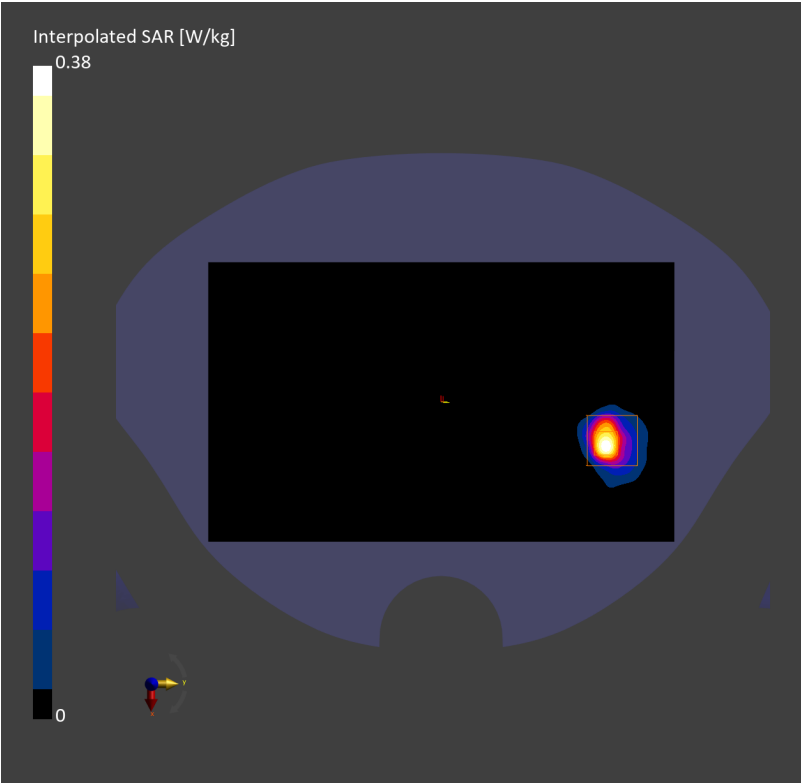
Phantom	TSL	Probe, Calibration Date	DAE, Calibration Date
Twin-SAM V8.0 (30deg probe tilt) – 2168	HSL5GHz	EX3DV4 – SN7858, 2025-01-15	DAE4ip Sn1846, 2024-12-10

Scans Setup

	Area Scan	Zoom Scan
Grid Extents [mm]	120.0 x 200.0	24.0 x 24.0 x 22.0
Grid Steps [mm]	10.0 x 10.0	4.0 x 4.0 x 2.0
Sensor Surface [mm]	3.0	1.4
Graded Grid	N/A	Yes
Grading Ratio	N/A	1.4
MAIA	Y	Y
Surface Detection	VMS + 6p	VMS + 6p
Scan Method	Measured	Measured

Measurement Results

	Area Scan	Zoom Scan
Date	2025-04-24, 09:22	2025-04-24, 09:29
psSAR1g [W/Kg]	0.234	0.243
psSAR10g [W/Kg]	0.064	0.060
Power Drift [dB]	0.00	-0.07
Power Scaling	Disabled	Disabled
Scaling Factor [dB]		
TSL Correction	No correction	No correction
M2/M1 [%]		51.5
Dist 3dB Peak [mm]		5.2



Device Under Test Properties

Model
PY7-63277Y

Exposure Conditions

Phantom Section, TSL	Position, Test Distance [mm]	Band	Group, UID	Frequency [MHz], Channel Number	Conversion Factor	TSL Conductivity [S/m]	TSL Permittivity
Flat, Head Simulating Liquid	EDGE TOP, 0.00	WLAN 5GHz	WLAN, 10544-AAD	5290.000, 58	5.25	4.82	35.8

Hardware Setup

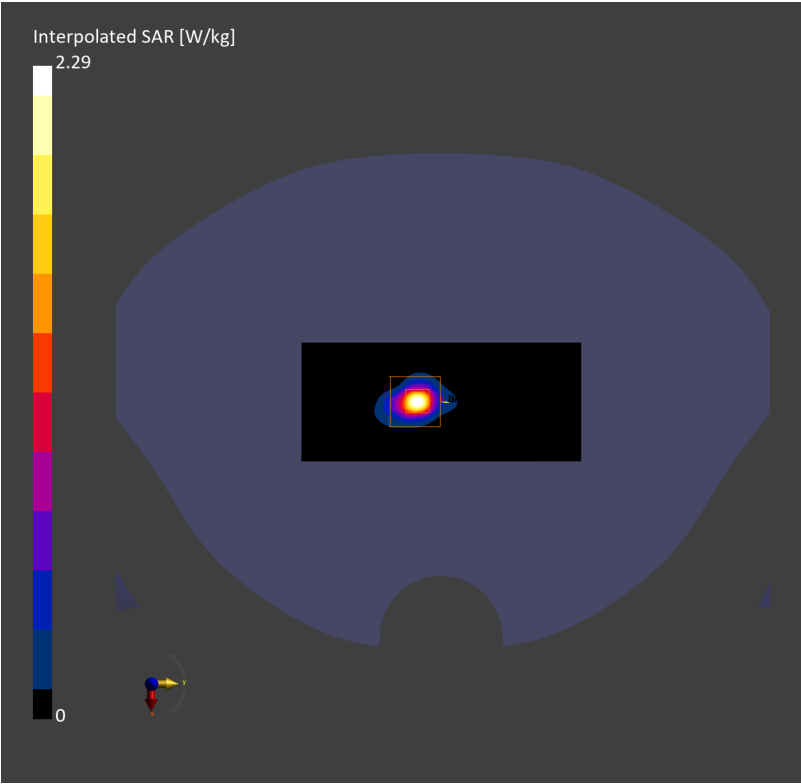
Phantom	TSL	Probe, Calibration Date	DAE, Calibration Date
Twin-SAM V8.0 (30deg probe tilt) – 2168	HSL5GHz	EX3DV4 – SN7858, 2025-01-15	DAE4ip Sn1846, 2024-12-10

Scans Setup

	Area Scan	Zoom Scan
Grid Extents [mm]	51.0 x 120.0	24.0 x 24.0 x 22.0
Grid Steps [mm]	8.5 x 10.0	4.0 x 4.0 x 2.0
Sensor Surface [mm]	3.0	1.4
Graded Grid	N/A	Yes
Grading Ratio	N/A	1.4
MAIA	N/A	N/A
Surface Detection	VMS + 6p	VMS + 6p
Scan Method	Measured	Measured

Measurement Results

	Area Scan	Zoom Scan
Date	2025-04-24, 23:34	2025-04-24, 23:41
psSAR1g [W/Kg]	1.21	1.30
psSAR10g [W/Kg]	0.281	0.297
Power Drift [dB]	0.02	-0.01
Power Scaling	Disabled	Disabled
Scaling Factor [dB]		
TSL Correction	No correction	No correction
M2/M1 [%]		51.9
Dist 3dB Peak [mm]		5.1



Device Under Test Properties

Model
PY7-63277Y

Exposure Conditions

Phantom Section, TSL	Position, Test Distance [mm]	Band	Group, UID	Frequency [MHz], Channel Number	Conversion Factor	TSL Conductivity [S/m]	TSL Permittivity
Flat, Head Simulating Liquid	BACK, 0.00	WLAN 5GHz	WLAN, 10554-AAE	5570.000, 114	4.65	5.12	35.0

Hardware Setup

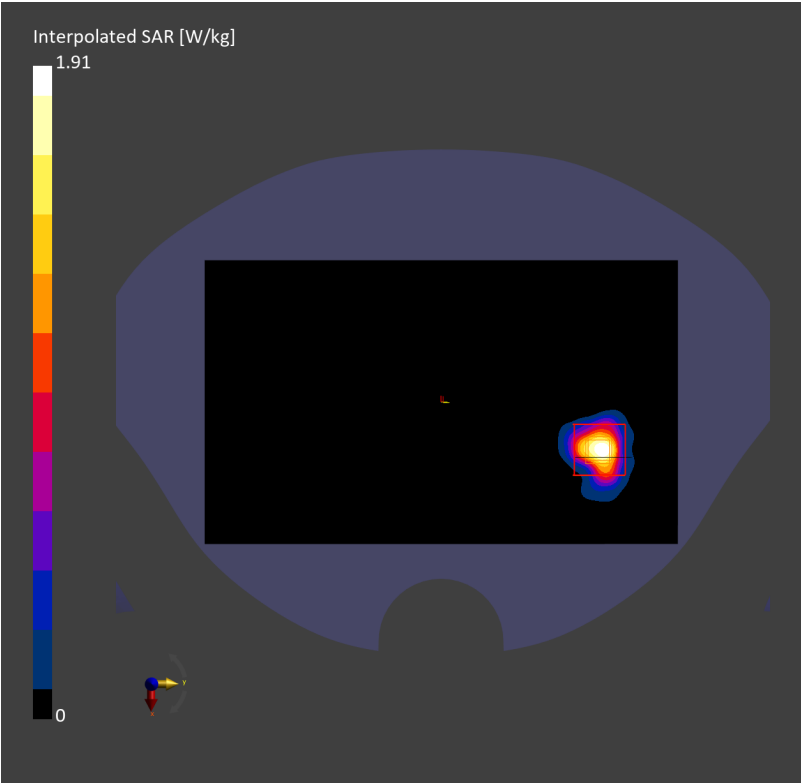
Phantom	TSL	Probe, Calibration Date	DAE, Calibration Date
Twin-SAM V8.0 (30deg probe tilt) – 2168	HSL5GHz	EX3DV4 – SN7858, 2025-01-15	DAE4ip Sn1846, 2024-12-10

Scans Setup

	Area Scan	Zoom Scan
Grid Extents [mm]	120.0 x 200.0	24.0 x 24.0 x 22.0
Grid Steps [mm]	10.0 x 10.0	4.0 x 4.0 x 2.0
Sensor Surface [mm]	3.0	1.4
Graded Grid	N/A	Yes
Grading Ratio	N/A	1.4
MAIA	Y	N/A
Surface Detection	VMS + 6p	VMS + 6p
Scan Method	Measured	Measured

Measurement Results

	Area Scan	Zoom Scan
Date	2025-04-25, 14:24	2025-04-25, 14:30
psSAR1g [W/Kg]	0.338	0.410
psSAR10g [W/Kg]	0.101	0.099
Power Drift [dB]	-0.05	0.05
Power Scaling	Disabled	Disabled
Scaling Factor [dB]		
TSL Correction	No correction	No correction
M2/M1 [%]		47.7
Dist 3dB Peak [mm]		4.4



Test Laboratory: TOWE Lab

Measurement Report for PY7-63277Y, CHEEK, WLAN 5GHz, IEEE 802.11ac WiFi (80MHz, MCS0), Channel 58 (5290.000 MHz)

Device Under Test Properties

Model
PY7-63277Y

Exposure Conditions

Phantom Section, TSL	Position, Test Distance [mm]	Band	Group, UID	Frequency [MHz], Channel Number	Conversion Factor	TSL Conductivity [S/m]	TSL Permittivity
LeftHead, Head Simulating Liquid	CHEEK, 0.00	WLAN 5GHz	WLAN, 10544-AAD	5290.000, 58	5.25	4.82	35.8

Hardware Setup

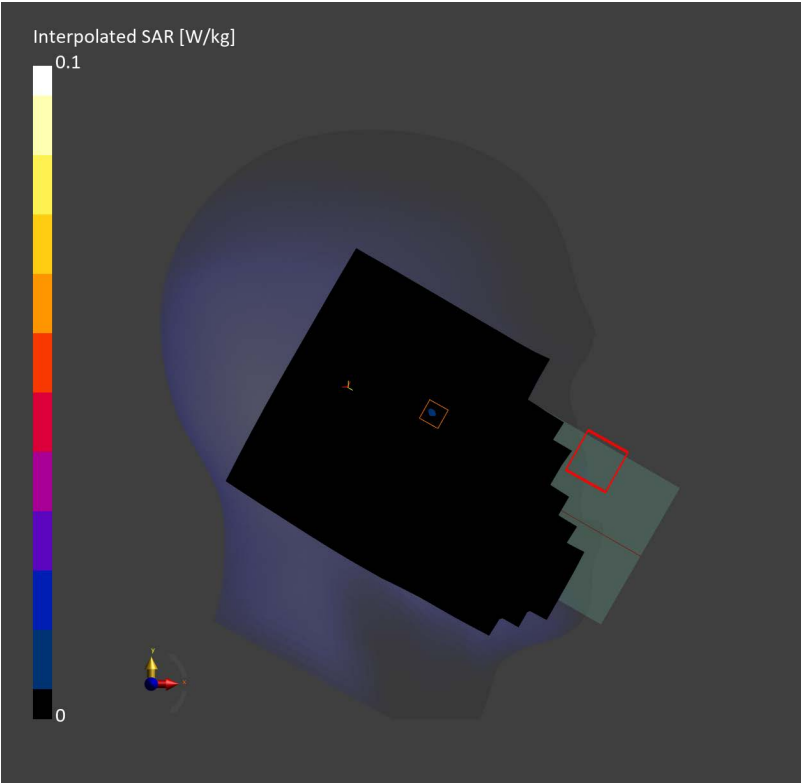
Phantom	TSL	Probe, Calibration Date	DAE, Calibration Date
Twin-SAM V8.0 (30deg probe tilt) – 2168	HSL5GHz	EX3DV4 – SN7858, 2025-01-15	DAE4ip Sn1846, 2024-12-10

Scans Setup

	Area Scan	Zoom Scan
Grid Extents [mm]	120.0 x 200.0	24.0 x 24.0 x 22.0
Grid Steps [mm]	10.0 x 10.0	4.0 x 4.0 x 2.0
Sensor Surface [mm]	3.0	1.4
Graded Grid	N/A	Yes
Grading Ratio	N/A	1.4
MAIA	Y	Y
Surface Detection	VMS + 6p	VMS + 6p
Scan Method	Measured	Measured

Measurement Results

	Area Scan	Zoom Scan
Date	2025-04-25, 01:01	2025-04-25, 01:18
psSAR1g [W/Kg]	0.003	0.033
psSAR10g [W/Kg]	0	0.003
Power Drift [dB]	-0.01	0.17
Power Scaling	Disabled	Disabled
Scaling Factor [dB]		
TSL Correction	No correction	No correction
M2/M1 [%]		60.1
Dist 3dB Peak [mm]		4.4



Test Laboratory: TOWE Lab

Measurement Report for PY7-63277Y, CHEEK, WLAN 5GHz, IEEE 802.11ac WiFi (160MHz, MCS0), Channel 114 (5570.000 MHz)

Device Under Test Properties

Model
PY7-63277Y

Exposure Conditions

Phantom Section, TSL	Position, Test Distance [mm]	Band	Group, UID	Frequency [MHz], Channel Number	Conversion Factor	TSL Conductivity [S/m]	TSL Permittivity
LeftHead, Head Simulating Liquid	CHEEK, 0.00	WLAN 5GHz	WLAN, 10554-AAE	5570.000, 114	4.65	5.12	35.0

Hardware Setup

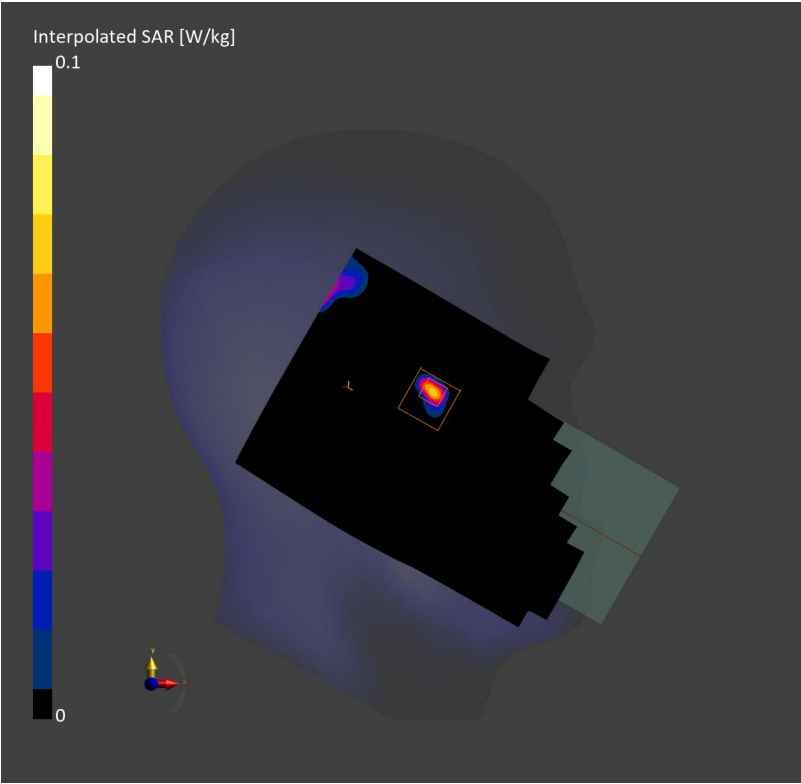
Phantom	TSL	Probe, Calibration Date	DAE, Calibration Date
Twin-SAM V8.0 (30deg probe tilt) – 2168	HSL5GHz	EX3DV4 – SN7858, 2025-01-15	DAE4ip Sn1846, 2024-12-10

Scans Setup

	Area Scan	Zoom Scan
Grid Extents [mm]	120.0 x 200.0	24.0 x 24.0 x 22.0
Grid Steps [mm]	10.0 x 10.0	4.0 x 4.0 x 2.0
Sensor Surface [mm]	3.0	1.4
Graded Grid	N/A	Yes
Grading Ratio	N/A	1.4
MAIA	Y	Y
Surface Detection	VMS + 6p	VMS + 6p
Scan Method	Measured	Measured

Measurement Results

	Area Scan	Zoom Scan
Date	2025-04-25, 18:32	2025-04-25, 18:48
psSAR1g [W/Kg]	0.034	0.040
psSAR10g [W/Kg]	0.005	0.002
Power Drift [dB]	-0.16	0.04
Power Scaling	Disabled	Disabled
Scaling Factor [dB]		
TSL Correction	No correction	No correction
M2/M1 [%]		61.0
Dist 3dB Peak [mm]		4.3



Test Laboratory: TOWE Lab

Measurement Report for PY7-63277Y, CHEEK, WLAN 5GHz, IEEE 802.11ac WiFi (80MHz, MCS0), Channel 155 (5775.000 MHz)

Device Under Test Properties

Model
PY7-63277Y

Exposure Conditions

Phantom Section, TSL	Position, Test Distance [mm]	Band	Group, UID	Frequency [MHz], Channel Number	Conversion Factor	TSL Conductivity [S/m]	TSL Permittivity
LeftHead, Head Simulating Liquid	CHEEK, 0.00	WLAN 5GHz	WLAN, 10544-AAD	5775.000, 155	4.75	5.47	34.5

Hardware Setup

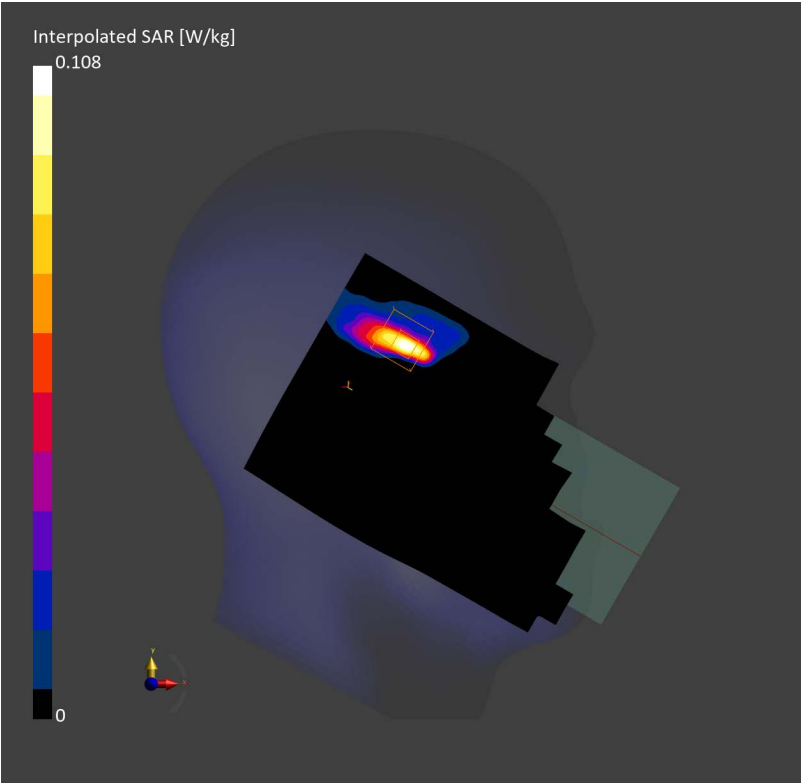
Phantom	TSL	Probe, Calibration Date	DAE, Calibration Date
Twin-SAM V8.0 (30deg probe tilt) – 2168	HSL5GHz	EX3DV4 – SN7858, 2025-01-15	DAE4ip Sn1846, 2024-12-10

Scans Setup

	Area Scan	Zoom Scan
Grid Extents [mm]	120.0 x 200.0	24.0 x 24.0 x 22.0
Grid Steps [mm]	10.0 x 10.0	4.0 x 4.0 x 2.0
Sensor Surface [mm]	3.0	1.4
Graded Grid	N/A	Yes
Grading Ratio	N/A	1.4
MAIA	Y	Y
Surface Detection	VMS	VMS + 6p
Scan Method	Measured	Measured

Measurement Results

	Area Scan	Zoom Scan
Date	2025-04-26, 16:57	2025-04-26, 17:08
psSAR1g [W/Kg]	0.062	0.01
psSAR10g [W/Kg]	0.019	0.001
Power Drift [dB]	-0.09	0.09
Power Scaling	Disabled	Disabled
Scaling Factor [dB]		
TSL Correction	No correction	No correction
M2/M1 [%]		65.8
Dist 3dB Peak [mm]		5.2



Device Under Test Properties

Model
PY7-63277Y

Exposure Conditions

Phantom Section, TSL	Position, Test Distance [mm]	Band	Group, UID	Frequency [MHz], Channel Number	Conversion Factor	TSL Conductivity [S/m]	TSL Permittivity
Flat, Head Simulating Liquid	BACK, 5.00	WLAN 5GHz	WLAN, 10544-AAD	5290.000, 58	5.25	4.82	35.8

Hardware Setup

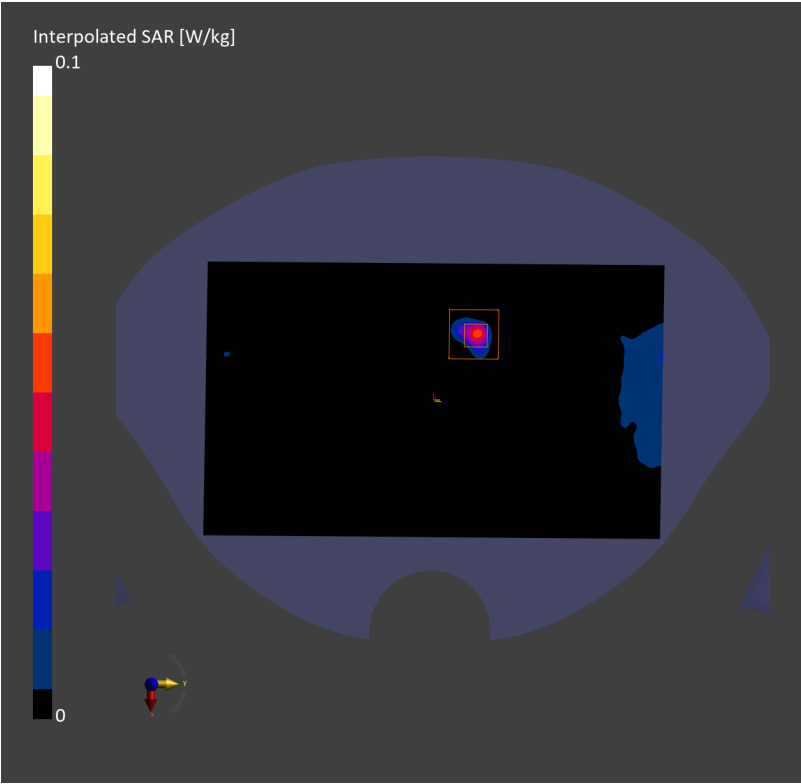
Phantom	TSL	Probe, Calibration Date	DAE, Calibration Date
Twin-SAM V8.0 (30deg probe tilt) – 2168	HSL5GHz	EX3DV4 – SN7858, 2025-01-15	DAE4ip Sn1846, 2024-12-10

Scans Setup

	Area Scan	Zoom Scan
Grid Extents [mm]	120.0 x 200.0	24.0 x 24.0 x 22.0
Grid Steps [mm]	10.0 x 10.0	4.0 x 4.0 x 2.0
Sensor Surface [mm]	3.0	1.4
Graded Grid	N/A	Yes
Grading Ratio	N/A	1.4
MAIA	Y	Y
Surface Detection	VMS + 6p	VMS + 6p
Scan Method	Measured	Measured

Measurement Results

	Area Scan	Zoom Scan
Date	2025-04-25, 03:16	2025-04-25, 03:22
psSAR1g [W/Kg]	0.030	0.032
psSAR10g [W/Kg]	0.005	0.004
Power Drift [dB]	0.03	0.07
Power Scaling	Disabled	Disabled
Scaling Factor [dB]		
TSL Correction	No correction	No correction
M2/M1 [%]		60.7
Dist 3dB Peak [mm]		5.3



Device Under Test Properties

Model
PY7-63277Y

Exposure Conditions

Phantom Section, TSL	Position, Test Distance [mm]	Band	Group, UID	Frequency [MHz], Channel Number	Conversion Factor	TSL Conductivity [S/m]	TSL Permittivity
Flat, Head Simulating Liquid	BACK, 5.00	WLAN 5GHz	WLAN, 10554-AAE	5570.000, 114	4.65	5.12	35.0

Hardware Setup

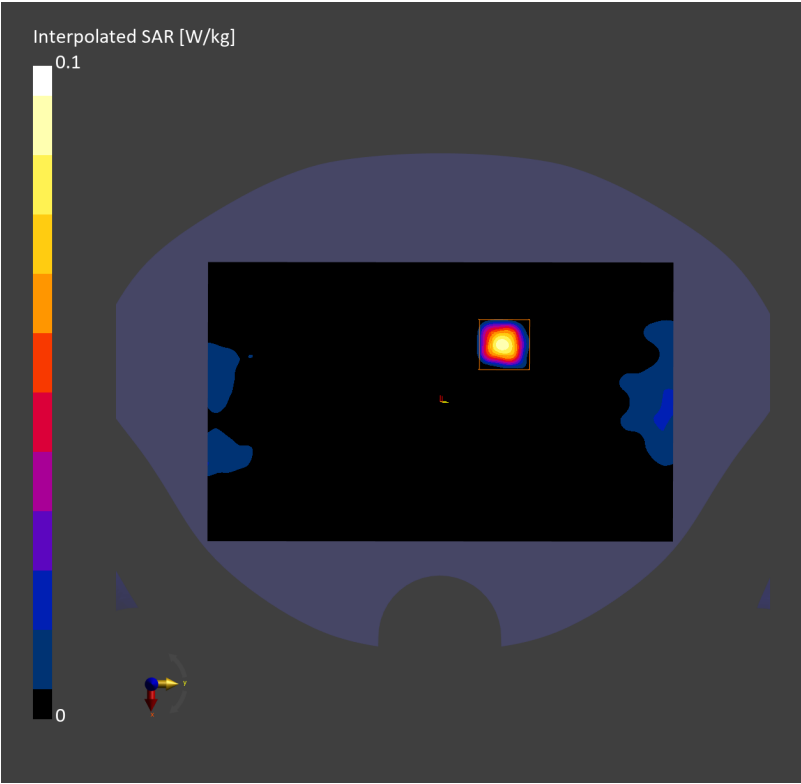
Phantom	TSL	Probe, Calibration Date	DAE, Calibration Date
Twin-SAM V8.0 (30deg probe tilt) – 2168	HSL5GHz	EX3DV4 – SN7858, 2025-01-15	DAE4ip Sn1846, 2024-12-10

Scans Setup

	Area Scan	Zoom Scan
Grid Extents [mm]	120.0 x 200.0	24.0 x 24.0 x 22.0
Grid Steps [mm]	10.0 x 10.0	4.0 x 4.0 x 2.0
Sensor Surface [mm]	3.0	1.4
Graded Grid	N/A	Yes
Grading Ratio	N/A	1.4
MAIA	Y	Y
Surface Detection	VMS + 6p	VMS + 6p
Scan Method	Measured	Measured

Measurement Results

	Area Scan	Zoom Scan
Date	2025-04-25, 21:21	2025-04-25, 21:28
psSAR1g [W/Kg]	0.065	0.062
psSAR10g [W/Kg]	0.015	0.011
Power Drift [dB]	-0.05	0.09
Power Scaling	Disabled	Disabled
Scaling Factor [dB]		
TSL Correction	No correction	No correction
M2/M1 [%]		55.2
Dist 3dB Peak [mm]		4.2



Device Under Test Properties

Model
PY7-63277Y

Exposure Conditions

Phantom Section, TSL	Position, Test Distance [mm]	Band	Group, UID	Frequency [MHz], Channel Number	Conversion Factor	TSL Conductivity [S/m]	TSL Permittivity
Flat, Head Simulating Liquid	BACK, 5.00	WLAN 5GHz	WLAN, 10544-AAD	5775.000, 155	4.75	5.47	34.5

Hardware Setup

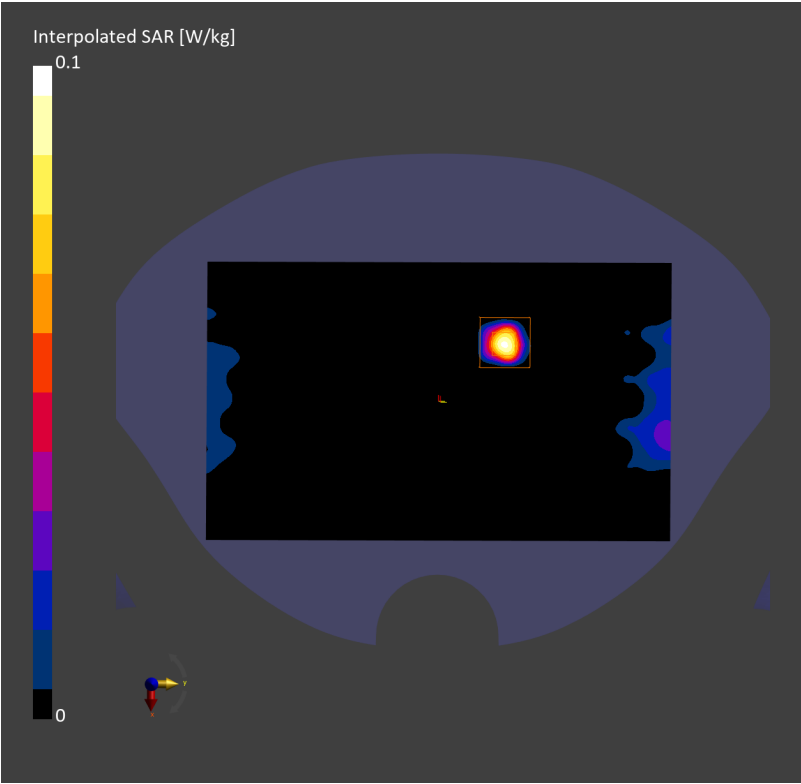
Phantom	TSL	Probe, Calibration Date	DAE, Calibration Date
Twin-SAM V8.0 (30deg probe tilt) – 2168	HSL5GHz	EX3DV4 – SN7858, 2025-01-15	DAE4ip Sn1846, 2024-12-10

Scans Setup

	Area Scan	Zoom Scan
Grid Extents [mm]	120.0 x 200.0	24.0 x 24.0 x 22.0
Grid Steps [mm]	10.0 x 10.0	4.0 x 4.0 x 2.0
Sensor Surface [mm]	3.0	1.4
Graded Grid	N/A	Yes
Grading Ratio	N/A	1.4
MAIA	Y	Y
Surface Detection	VMS + 6p	VMS + 6p
Scan Method	Measured	Measured

Measurement Results

	Area Scan	Zoom Scan
Date	2025-04-26, 21:17	2025-04-26, 21:23
psSAR1g [W/Kg]	0.067	0.056
psSAR10g [W/Kg]	0.014	0.009
Power Drift [dB]	-0.03	-0.08
Power Scaling	Disabled	Disabled
Scaling Factor [dB]		
TSL Correction	No correction	No correction
M2/M1 [%]		54.2
Dist 3dB Peak [mm]		5.2



Device Under Test Properties

Model
PY7-63277Y

Exposure Conditions

Phantom Section, TSL	Position, Test Distance [mm]	Band	Group, UID	Frequency [MHz], Channel Number	Conversion Factor	TSL Conductivity [S/m]	TSL Permittivity
Flat, Head Simulating Liquid	BACK, 5.00	WLAN 5GHz	WLAN, 10544-AAD	5210.000, 42	5.25	4.79	35.9

Hardware Setup

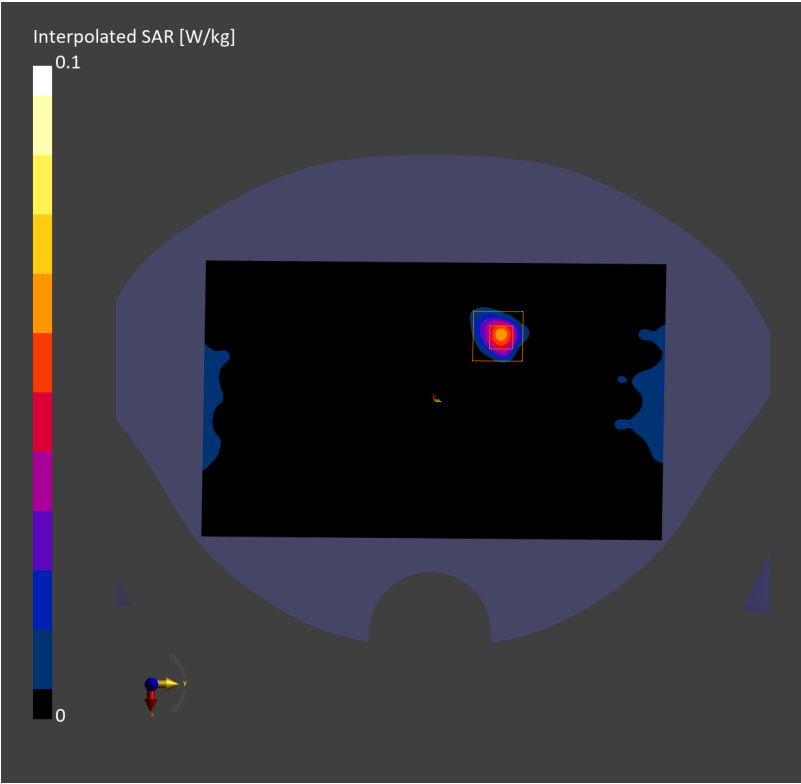
Phantom	TSL	Probe, Calibration Date	DAE, Calibration Date
Twin-SAM V8.0 (30deg probe tilt) – 2168	HSL5GHz	EX3DV4 – SN7858, 2025-01-15	DAE4ip Sn1846, 2024-12-10

Scans Setup

	Area Scan	Zoom Scan
Grid Extents [mm]	120.0 x 200.0	24.0 x 24.0 x 22.0
Grid Steps [mm]	10.0 x 10.0	4.0 x 4.0 x 1.4
Sensor Surface [mm]	3.0	1.4
Graded Grid	N/A	Yes
Grading Ratio	N/A	1.4
MAIA	Y	Y
Surface Detection	VMS + 6p	VMS + 6p
Scan Method	Measured	Measured

Measurement Results

	Area Scan	Zoom Scan
Date	2025-04-24, 19:31	2025-04-24, 19:38
psSAR1g [W/Kg]	0.042	0.045
psSAR10g [W/Kg]	0.010	0.007
Power Drift [dB]	-0.08	0.00
Power Scaling	Disabled	Disabled
Scaling Factor [dB]		
TSL Correction	No correction	No correction
M2/M1 [%]		64.6
Dist 3dB Peak [mm]		4.1



Device Under Test Properties

Model
PY7-63277Y

Exposure Conditions

Phantom Section, TSL	Position, Test Distance [mm]	Band	Group, UID	Frequency [MHz], Channel Number	Conversion Factor	TSL Conductivity [S/m]	TSL Permittivity
Flat, Head Simulating Liquid	BACK, 0.00	WLAN 5GHz	WLAN, 10544-AAD	5290.000, 58	5.25	4.82	35.8

Hardware Setup

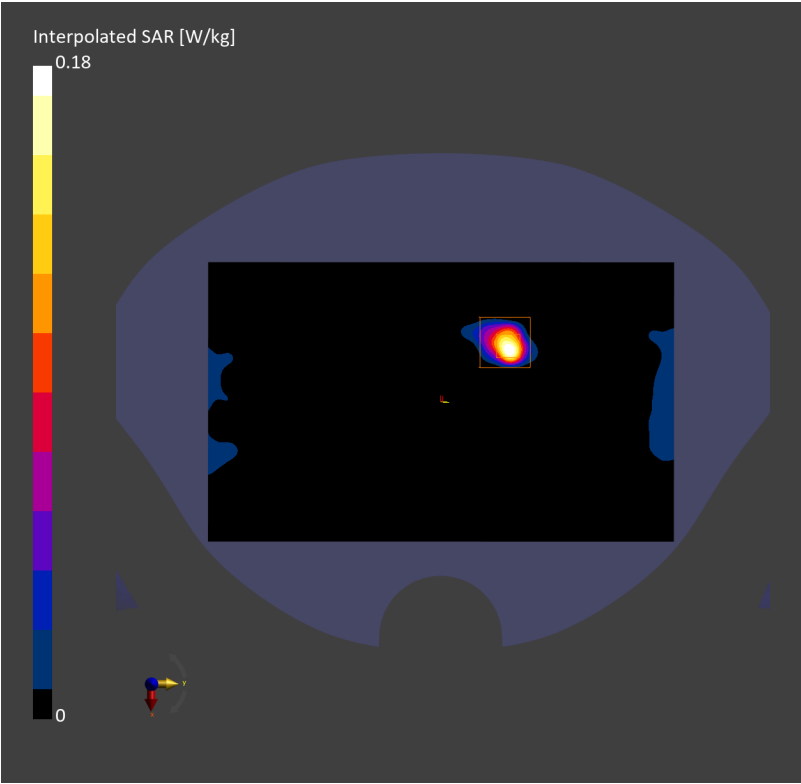
Phantom	TSL	Probe, Calibration Date	DAE, Calibration Date
Twin-SAM V8.0 (30deg probe tilt) – 2168	HSL5GHz	EX3DV4 – SN7858, 2025-01-15	DAE4ip Sn1846, 2024-12-10

Scans Setup

	Area Scan	Zoom Scan
Grid Extents [mm]	120.0 x 200.0	24.0 x 24.0 x 22.0
Grid Steps [mm]	10.0 x 10.0	4.0 x 4.0 x 2.0
Sensor Surface [mm]	3.0	1.4
Graded Grid	N/A	Yes
Grading Ratio	N/A	1.4
MAIA	Y	Y
Surface Detection	VMS + 6p	VMS + 6p
Scan Method	Measured	Measured

Measurement Results

	Area Scan	Zoom Scan
Date	2025-04-25, 06:39	2025-04-25, 06:46
psSAR1g [W/Kg]	0.116	0.137
psSAR10g [W/Kg]	0.027	0.026
Power Drift [dB]	0.04	0.05
Power Scaling	Disabled	Disabled
Scaling Factor [dB]		
TSL Correction	No correction	No correction
M2/M1 [%]		53.3
Dist 3dB Peak [mm]		4.9



Device Under Test Properties

Model
PY7-63277Y

Exposure Conditions

Phantom Section, TSL	Position, Test Distance [mm]	Band	Group, UID	Frequency [MHz], Channel Number	Conversion Factor	TSL Conductivity [S/m]	TSL Permittivity
Flat, Head Simulating Liquid	BACK, 0.00	WLAN 5GHz	WLAN, 10554-AAE	5570.000, 114	4.65	5.12	35.0

Hardware Setup

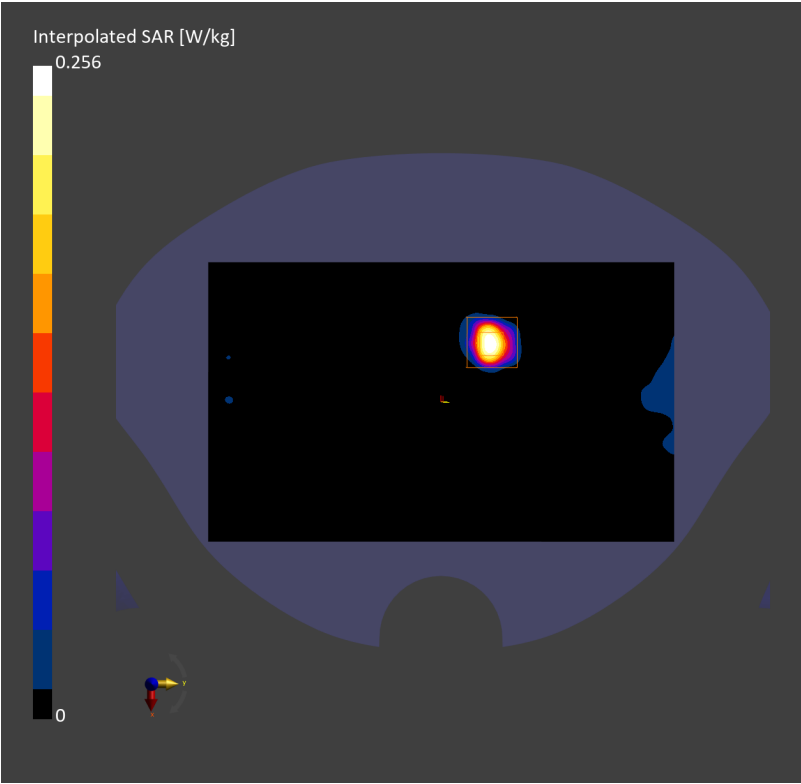
Phantom	TSL	Probe, Calibration Date	DAE, Calibration Date
Twin-SAM V8.0 (30deg probe tilt) – 2168	HSL5GHz	EX3DV4 – SN7858, 2025-01-15	DAE4ip Sn1846, 2024-12-10

Scans Setup

	Area Scan	Zoom Scan
Grid Extents [mm]	120.0 x 200.0	24.0 x 24.0 x 22.0
Grid Steps [mm]	10.0 x 10.0	4.0 x 4.0 x 2.0
Sensor Surface [mm]	3.0	1.4
Graded Grid	N/A	Yes
Grading Ratio	N/A	1.4
MAIA	Y	Y
Surface Detection	VMS + 6p	VMS + 6p
Scan Method	Measured	Measured

Measurement Results

	Area Scan	Zoom Scan
Date	2025-04-25, 23:50	2025-04-25, 23:56
psSAR1g [W/Kg]	0.181	0.186
psSAR10g [W/Kg]	0.046	0.040
Power Drift [dB]	-0.05	-0.01
Power Scaling	Disabled	Disabled
Scaling Factor [dB]		
TSL Correction	No correction	No correction
M2/M1 [%]		41.3
Dist 3dB Peak [mm]		4.4



Device Under Test Properties

Model
PY7-63277Y

Exposure Conditions

Phantom Section, TSL	Position, Test Distance [mm]	Band	Group, UID	Frequency [MHz], Channel Number	Conversion Factor	TSL Conductivity [S/m]	TSL Permittivity
RightHead, Head Simulating Liquid	TILT, 0.00	WLAN 5GHz	WLAN, 10544-AAD	5290.000, 58	5.25	4.82	35.8

Hardware Setup

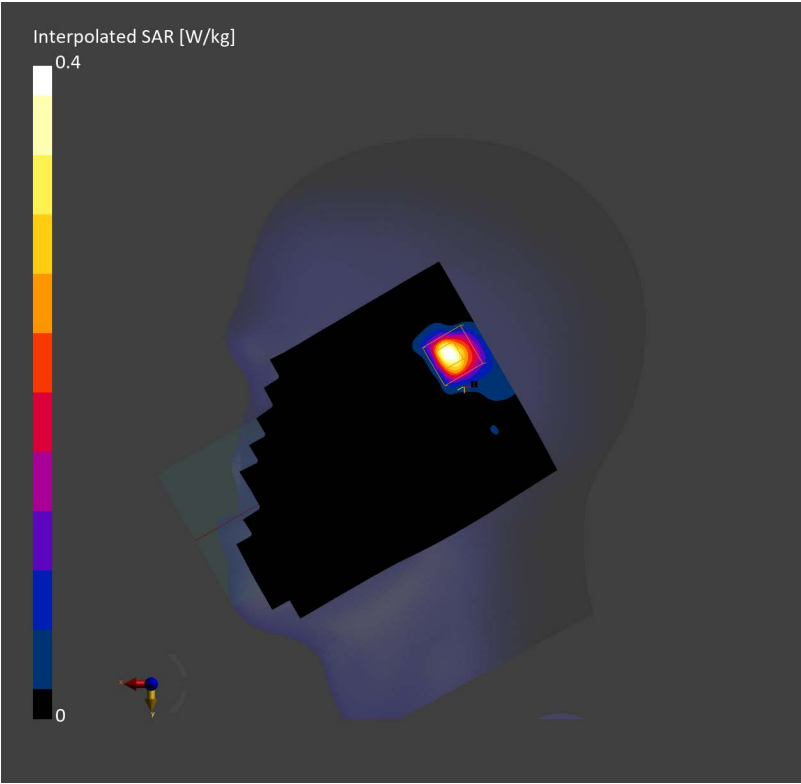
Phantom	TSL	Probe, Calibration Date	DAE, Calibration Date
Twin-SAM V8.0 (30deg probe tilt) – 2168	HSL5GHz	EX3DV4 – SN7858, 2025-01-15	DAE4ip Sn1846, 2024-12-10

Scans Setup

	Area Scan	Zoom Scan
Grid Extents [mm]	120.0 x 200.0	24.0 x 24.0 x 22.0
Grid Steps [mm]	10.0 x 10.0	4.0 x 4.0 x 2.0
Sensor Surface [mm]	3.0	1.4
Graded Grid	N/A	Yes
Grading Ratio	N/A	1.4
MAIA	Y	Y
Surface Detection	VMS + 6p	VMS + 6p
Scan Method	Measured	Measured

Measurement Results

	Area Scan	Zoom Scan
Date	2025-04-25, 11:25	2025-04-25, 11:32
psSAR1g [W/Kg]	0.261	0.280
psSAR10g [W/Kg]	0.083	0.074
Power Drift [dB]	-0.01	0.00
Power Scaling	Disabled	Disabled
Scaling Factor [dB]		
TSL Correction	No correction	No correction
M2/M1 [%]		57.3
Dist 3dB Peak [mm]		6.5



Device Under Test Properties

Model
PY7-63277Y

Exposure Conditions

Phantom Section, TSL	Position, Test Distance [mm]	Band	Group, UID	Frequency [MHz], Channel Number	Conversion Factor	TSL Conductivity [S/m]	TSL Permittivity
RightHead, Head Simulating Liquid	TILT, 0.00	WLAN 5GHz	WLAN, 10554-AAE	5570.000, 114	4.65	5.12	35.0

Hardware Setup

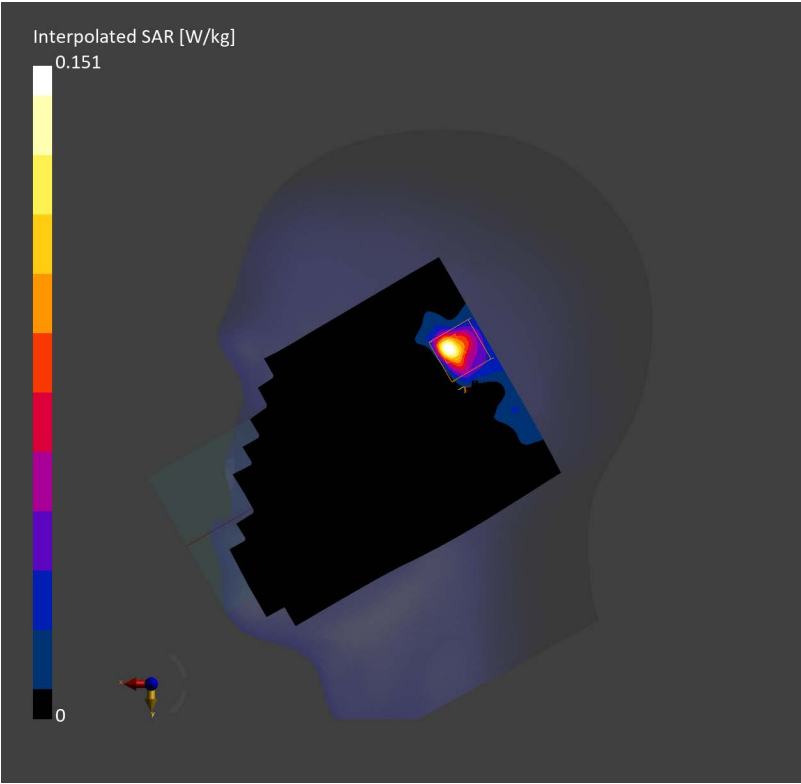
Phantom	TSL	Probe, Calibration Date	DAE, Calibration Date
Twin-SAM V8.0 (30deg probe tilt) – 2168	HSL5GHz	EX3DV4 – SN7858, 2025-01-15	DAE4ip Sn1846, 2024-12-10

Scans Setup

	Area Scan	Zoom Scan
Grid Extents [mm]	120.0 x 200.0	24.0 x 24.0 x 22.0
Grid Steps [mm]	10.0 x 10.0	4.0 x 4.0 x 2.0
Sensor Surface [mm]	3.0	1.4
Graded Grid	N/A	Yes
Grading Ratio	N/A	1.4
MAIA	Y	Y
Surface Detection	VMS + 6p	VMS + 6p
Scan Method	Measured	Measured

Measurement Results

	Area Scan	Zoom Scan
Date	2025-04-26, 02:37	2025-04-26, 02:44
psSAR1g [W/Kg]	0.088	0.070
psSAR10g [W/Kg]	0.026	0.016
Power Drift [dB]	-0.12	0.00
Power Scaling	Disabled	Disabled
Scaling Factor [dB]		
TSL Correction	No correction	No correction
M2/M1 [%]		58.3
Dist 3dB Peak [mm]		4.8



Test Laboratory: TOWE Lab

Measurement Report for PY7-63277Y, TILT, WLAN 5GHz, IEEE 802.11ac WiFi (80MHz, MCS0), Channel 155 (5775.000 MHz)

Device Under Test Properties

Model
PY7-63277Y

Exposure Conditions

Phantom Section, TSL	Position, Test Distance [mm]	Band	Group, UID	Frequency [MHz], Channel Number	Conversion Factor	TSL Conductivity [S/m]	TSL Permittivity
LeftHead, Head Simulating Liquid	TILT, 0.00	WLAN 5GHz	WLAN, 10544-AAD	5775.000, 155	4.75	5.47	34.5

Hardware Setup

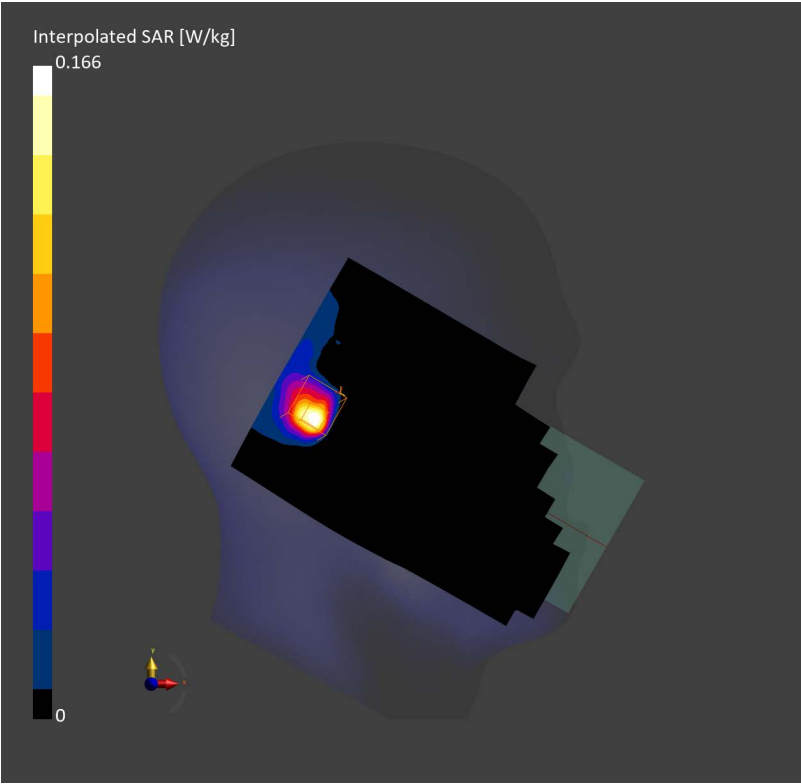
Phantom	TSL	Probe, Calibration Date	DAE, Calibration Date
Twin-SAM V8.0 (30deg probe tilt) – 2168	HSL5GHz	EX3DV4 – SN7858, 2025-01-15	DAE4ip Sn1846, 2024-12-10

Scans Setup

	Area Scan	Zoom Scan
Grid Extents [mm]	120.0 x 200.0	24.0 x 24.0 x 22.0
Grid Steps [mm]	10.0 x 10.0	4.0 x 4.0 x 2.0
Sensor Surface [mm]	3.0	1.4
Graded Grid	N/A	Yes
Grading Ratio	N/A	1.4
MAIA	Y	Y
Surface Detection	VMS + 6p	VMS + 6p
Scan Method	Measured	Measured

Measurement Results

	Area Scan	Zoom Scan
Date	2025-04-26, 23:28	2025-04-26, 23:35
psSAR1g [W/Kg]	0.112	0.092
psSAR10g [W/Kg]	0.037	0.024
Power Drift [dB]	0.09	0.12
Power Scaling	Disabled	Disabled
Scaling Factor [dB]		
TSL Correction	No correction	No correction
M2/M1 [%]		59.3
Dist 3dB Peak [mm]		8.0



Device Under Test Properties

Model
PY7-63277Y

Exposure Conditions

Phantom Section, TSL	Position, Test Distance [mm]	Band	Group, UID	Frequency [MHz], Channel Number	Conversion Factor	TSL Conductivity [S/m]	TSL Permittivity
Flat, Head Simulating Liquid	BACK, 5.00	WLAN 5GHz	WLAN, 10544-AAD	5290.000, 58	5.25	4.82	35.8

Hardware Setup

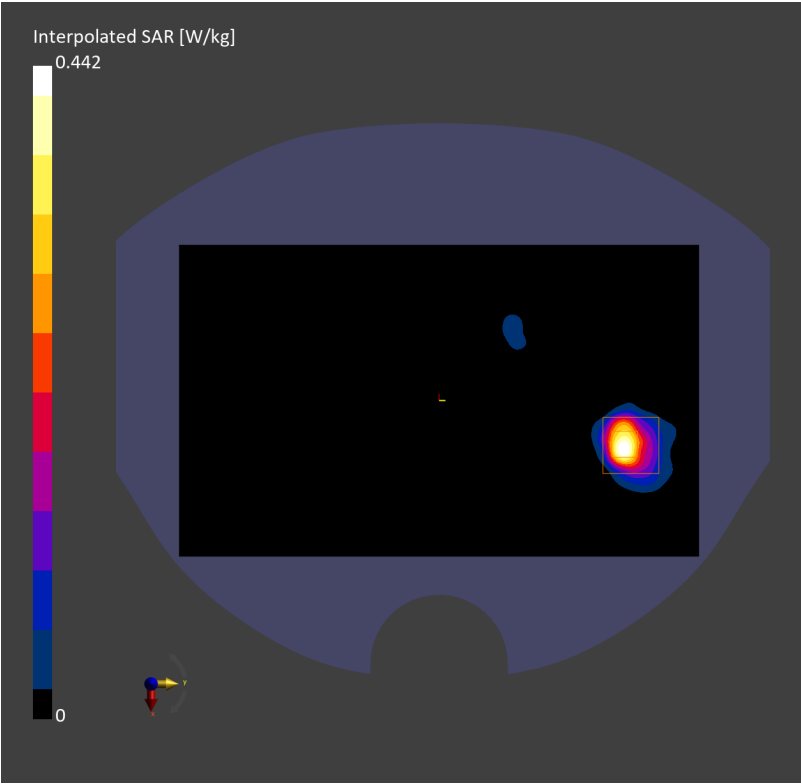
Phantom	TSL	Probe, Calibration Date	DAE, Calibration Date
Twin-SAM V8.0 (30deg probe tilt) – 2168	HSL5GHz	EX3DV4 – SN7858, 2025-01-15	DAE4ip Sn1846, 2024-12-10

Scans Setup

	Area Scan	Zoom Scan
Grid Extents [mm]	120.0 x 200.0	24.0 x 24.0 x 22.0
Grid Steps [mm]	10.0 x 10.0	4.0 x 4.0 x 2.0
Sensor Surface [mm]	3.0	1.4
Graded Grid	N/A	Yes
Grading Ratio	N/A	1.4
MAIA	Y	Y
Surface Detection	VMS + 6p	VMS + 6p
Scan Method	Measured	Measured

Measurement Results

	Area Scan	Zoom Scan
Date	2025-04-25, 08:08	2025-04-25, 08:15
psSAR1g [W/Kg]	0.286	0.299
psSAR10g [W/Kg]	0.082	0.072
Power Drift [dB]	-0.16	-0.07
Power Scaling	Disabled	Disabled
Scaling Factor [dB]		
TSL Correction	No correction	No correction
M2/M1 [%]		48.3
Dist 3dB Peak [mm]		5.7



Device Under Test Properties

Model
PY7-63277Y

Exposure Conditions

Phantom Section, TSL	Position, Test Distance [mm]	Band	Group, UID	Frequency [MHz], Channel Number	Conversion Factor	TSL Conductivity [S/m]	TSL Permittivity
Flat, Head Simulating Liquid	BACK, 5.00	WLAN 5GHz	WLAN, 10554-AAE	5570.000, 114	4.65	5.12	35.0

Hardware Setup

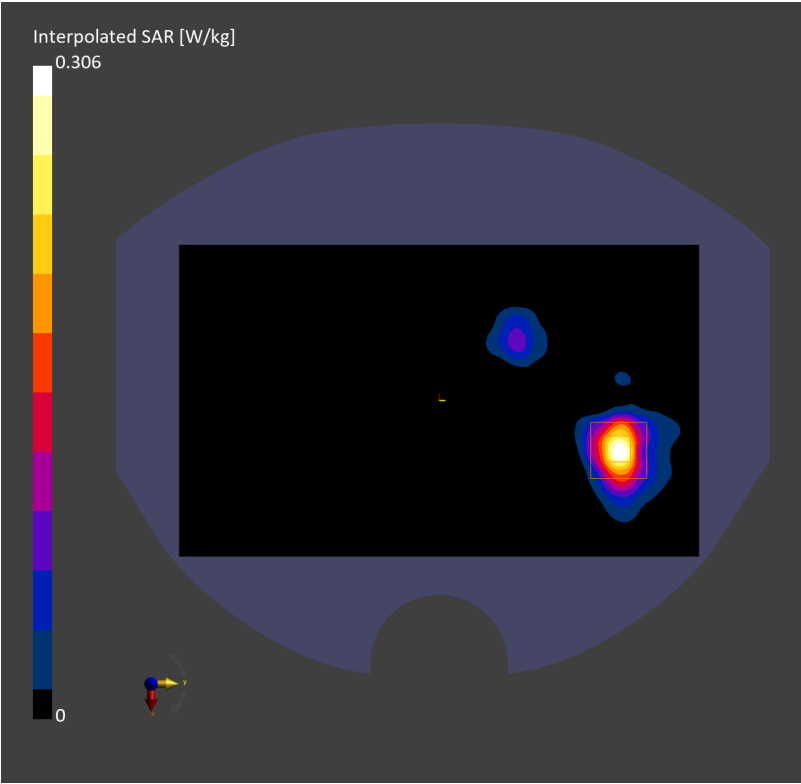
Phantom	TSL	Probe, Calibration Date	DAE, Calibration Date
Twin-SAM V8.0 (30deg probe tilt) – 2168	HSL5GHz	EX3DV4 – SN7858, 2025-01-15	DAE4ip Sn1846, 2024-12-10

Scans Setup

	Area Scan	Zoom Scan
Grid Extents [mm]	120.0 x 200.0	24.0 x 24.0 x 22.0
Grid Steps [mm]	10.0 x 10.0	4.0 x 4.0 x 2.0
Sensor Surface [mm]	3.0	1.4
Graded Grid	N/A	Yes
Grading Ratio	N/A	1.4
MAIA	Y	Y
Surface Detection	VMS + 6p	VMS + 6p
Scan Method	Measured	Measured

Measurement Results

	Area Scan	Zoom Scan
Date	2025-04-26, 05:54	2025-04-26, 06:00
psSAR1g [W/Kg]	0.160	0.171
psSAR10g [W/Kg]	0.046	0.041
Power Drift [dB]	-0.09	0.12
Power Scaling	Disabled	Disabled
Scaling Factor [dB]		
TSL Correction	No correction	No correction
M2/M1 [%]		51.3
Dist 3dB Peak [mm]		4.7



Device Under Test Properties

Model
PY7-63277Y

Exposure Conditions

Phantom Section, TSL	Position, Test Distance [mm]	Band	Group, UID	Frequency [MHz], Channel Number	Conversion Factor	TSL Conductivity [S/m]	TSL Permittivity
Flat, Head Simulating Liquid	BACK, 5.00	WLAN 5GHz	WLAN, 10544-AAD	5775.000, 155	4.75	5.47	34.5

Hardware Setup

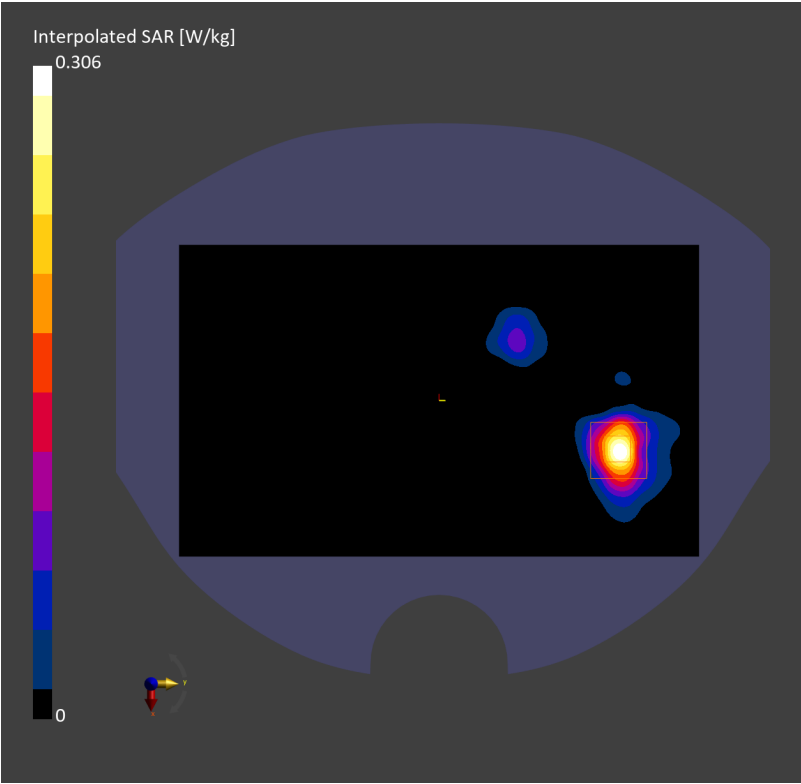
Phantom	TSL	Probe, Calibration Date	DAE, Calibration Date
Twin-SAM V8.0 (30deg probe tilt) – 2168	HSL5GHz	EX3DV4 – SN7858, 2025-01-15	DAE4ip Sn1846, 2024-12-10

Scans Setup

	Area Scan	Zoom Scan
Grid Extents [mm]	120.0 x 200.0	24.0 x 24.0 x 22.0
Grid Steps [mm]	10.0 x 10.0	4.0 x 4.0 x 2.0
Sensor Surface [mm]	3.0	1.4
Graded Grid	N/A	Yes
Grading Ratio	N/A	1.4
MAIA	Y	Y
Surface Detection	VMS + 6p	VMS + 6p
Scan Method	Measured	Measured

Measurement Results

	Area Scan	Zoom Scan
Date	2025-04-27, 03:53	2025-04-27, 04:00
psSAR1g [W/Kg]	0.207	0.189
psSAR10g [W/Kg]	0.065	0.053
Power Drift [dB]	0.09	-0.01
Power Scaling	Disabled	Disabled
Scaling Factor [dB]		
TSL Correction	No correction	No correction
M2/M1 [%]		41.5
Dist 3dB Peak [mm]		6.3



Device Under Test Properties

Model
PY7-63277Y

Exposure Conditions

Phantom Section, TSL	Position, Test Distance [mm]	Band	Group, UID	Frequency [MHz], Channel Number	Conversion Factor	TSL Conductivity [S/m]	TSL Permittivity
Flat, Head Simulating Liquid	BACK, 5.00	WLAN 5GHz	WLAN, 10544-AAD	5210.000, 42	5.25	4.79	35.9

Hardware Setup

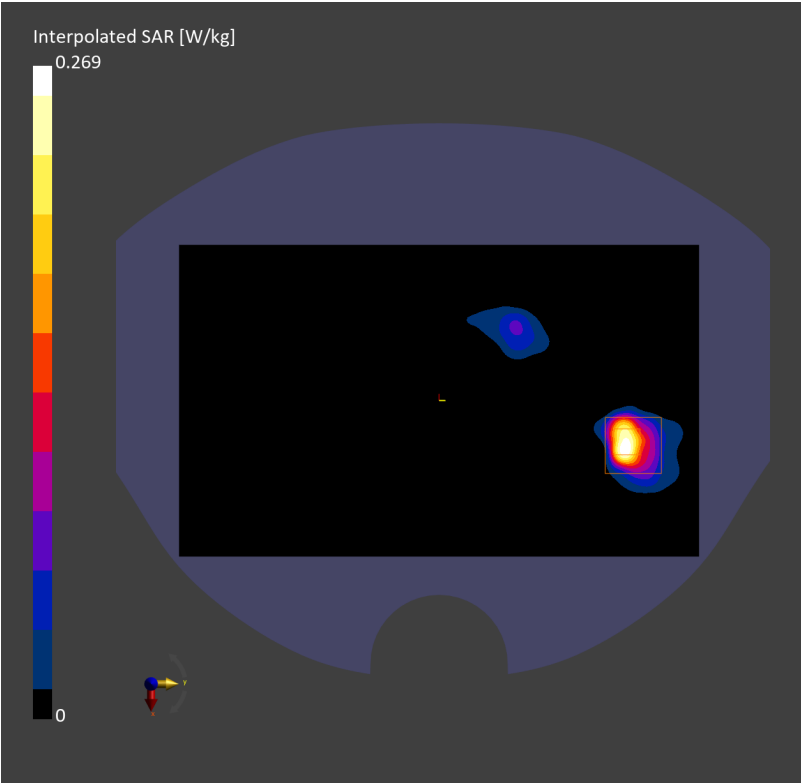
Phantom	TSL	Probe, Calibration Date	DAE, Calibration Date
Twin-SAM V8.0 (30deg probe tilt) – 2168	HSL5GHz	EX3DV4 – SN7858, 2025-01-15	DAE4ip Sn1846, 2024-12-10

Scans Setup

	Area Scan	Zoom Scan
Grid Extents [mm]	120.0 x 200.0	24.0 x 24.0 x 22.0
Grid Steps [mm]	10.0 x 10.0	4.0 x 4.0 x 2.0
Sensor Surface [mm]	3.0	1.4
Graded Grid	N/A	Yes
Grading Ratio	N/A	1.4
MAIA	Y	Y
Surface Detection	VMS + 6p	VMS + 6p
Scan Method	Measured	Measured

Measurement Results

	Area Scan	Zoom Scan
Date	2025-04-24, 13:11	2025-04-24, 13:18
psSAR1g [W/Kg]	0.177	0.188
psSAR10g [W/Kg]	0.051	0.044
Power Drift [dB]	-0.14	-0.09
Power Scaling	Disabled	Disabled
Scaling Factor [dB]		
TSL Correction	No correction	No correction
M2/M1 [%]		48.2
Dist 3dB Peak [mm]		5.2



Device Under Test Properties

Model
PY7-63277Y

Exposure Conditions

Phantom Section, TSL	Position, Test Distance [mm]	Band	Group, UID	Frequency [MHz], Channel Number	Conversion Factor	TSL Conductivity [S/m]	TSL Permittivity
Flat, Head Simulating Liquid	EDGE TOP, 0.00	WLAN 5GHz	WLAN, 10544-AAD	5290.000, 58	5.25	4.82	35.8

Hardware Setup

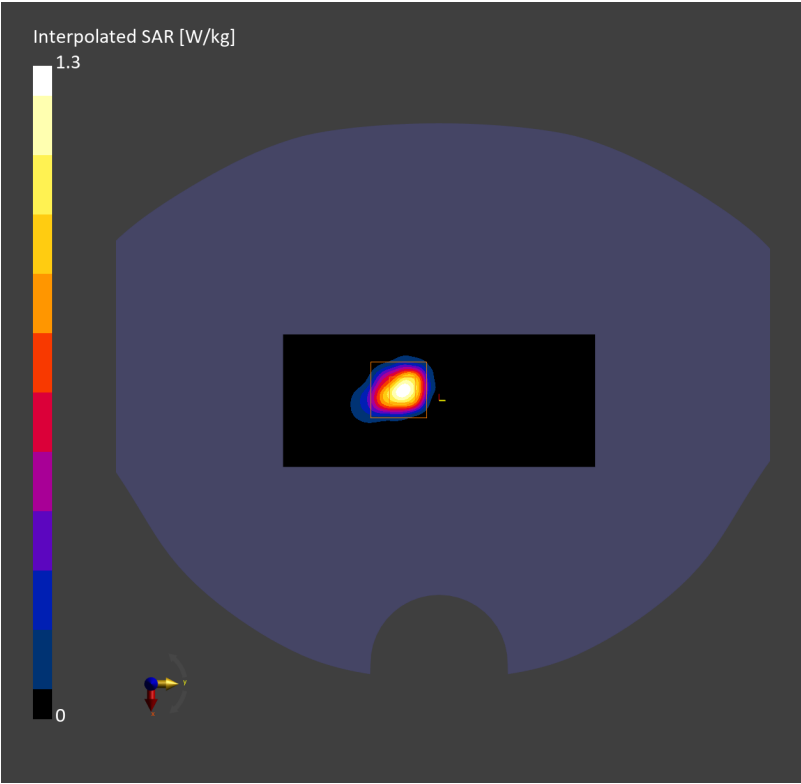
Phantom	TSL	Probe, Calibration Date	DAE, Calibration Date
Twin-SAM V8.0 (30deg probe tilt) – 2168	HSL5GHz	EX3DV4 – SN7858, 2025-01-15	DAE4ip Sn1846, 2024-12-10

Scans Setup

	Area Scan	Zoom Scan
Grid Extents [mm]	51.0 x 120.0	24.0 x 24.0 x 22.0
Grid Steps [mm]	8.5 x 10.0	4.0 x 4.0 x 2.0
Sensor Surface [mm]	3.0	1.4
Graded Grid	N/A	Yes
Grading Ratio	N/A	1.4
MAIA	Y	N/A
Surface Detection	VMS + 6p	VMS + 6p
Scan Method	Measured	Measured

Measurement Results

	Area Scan	Zoom Scan
Date	2025-04-25, 10:09	2025-04-25, 10:15
psSAR1g [W/Kg]	0.820	1.05
psSAR10g [W/Kg]	0.226	0.237
Power Drift [dB]	0.03	-0.01
Power Scaling	Disabled	Disabled
Scaling Factor [dB]		
TSL Correction	No correction	No correction
M2/M1 [%]		51.8
Dist 3dB Peak [mm]		4.9



Device Under Test Properties

Model
PY7-63277Y

Exposure Conditions

Phantom Section, TSL	Position, Test Distance [mm]	Band	Group, UID	Frequency [MHz], Channel Number	Conversion Factor	TSL Conductivity [S/m]	TSL Permittivity
Flat, Head Simulating Liquid	BACK, 0.00	WLAN 5GHz	WLAN, 10554-AAE	5570.000, 114	4.65	5.12	35.0

Hardware Setup

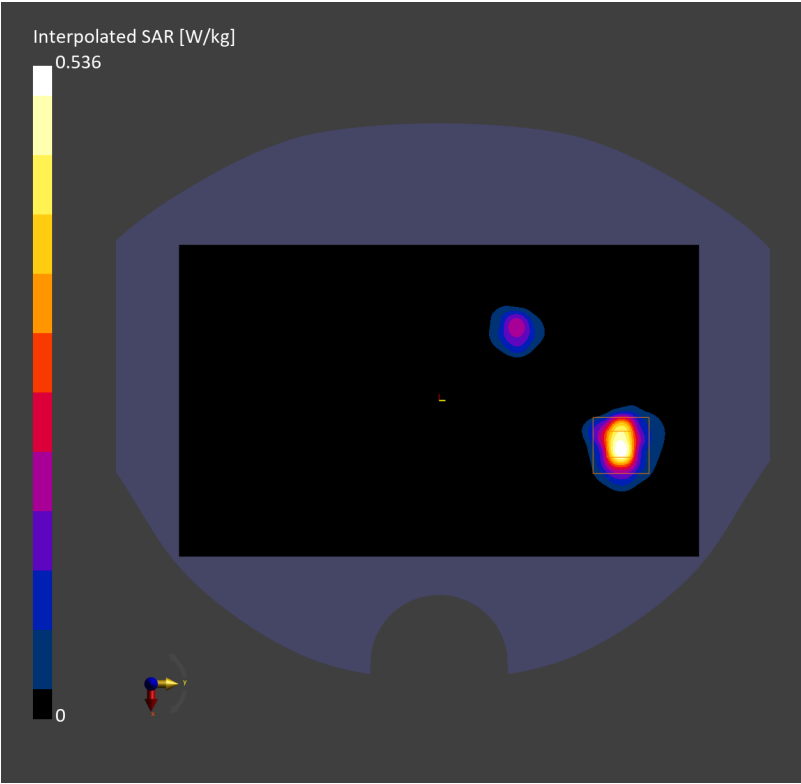
Phantom	TSL	Probe, Calibration Date	DAE, Calibration Date
Twin-SAM V8.0 (30deg probe tilt) – 2168	HSL5GHz	EX3DV4 – SN7858, 2025-01-15	DAE4ip Sn1846, 2024-12-10

Scans Setup

	Area Scan	Zoom Scan
Grid Extents [mm]	120.0 x 200.0	24.0 x 24.0 x 22.0
Grid Steps [mm]	10.0 x 10.0	4.0 x 4.0 x 2.0
Sensor Surface [mm]	3.0	1.4
Graded Grid	N/A	Yes
Grading Ratio	N/A	1.4
MAIA	Y	Y
Surface Detection	VMS + 6p	VMS + 6p
Scan Method	Measured	Measured

Measurement Results

	Area Scan	Zoom Scan
Date	2025-04-26, 09:37	2025-04-26, 09:44
psSAR1g [W/Kg]	0.352	0.334
psSAR10g [W/Kg]	0.097	0.076
Power Drift [dB]	-0.03	-0.11
Power Scaling	Disabled	Disabled
Scaling Factor [dB]		
TSL Correction	No correction	No correction
M2/M1 [%]		42.5
Dist 3dB Peak [mm]		4.2



Test Laboratory: TOWE Lab

Measurement Report for PY7-63277Y, CHEEK, ISM 2.4 GHz Band, Bluetooth (PI/4-DQPSK, DH5), Channel 0 (2402.000 MHz)

Device Under Test Properties

Model
PY7-63277Y

Exposure Conditions

Phantom Section, TSL	Position, Test Distance [mm]	Band	Group, UID	Frequency [MHz], Channel Number	TSL Conductivity [S/m]	TSL Permittivity
RightHead, Head Simulating Liquid	CHEEK, 0.00	ISM 2.4 GHz Band	Bluetooth, 10035-CAA	2402.000, 0	1.76	40.5

Hardware Setup

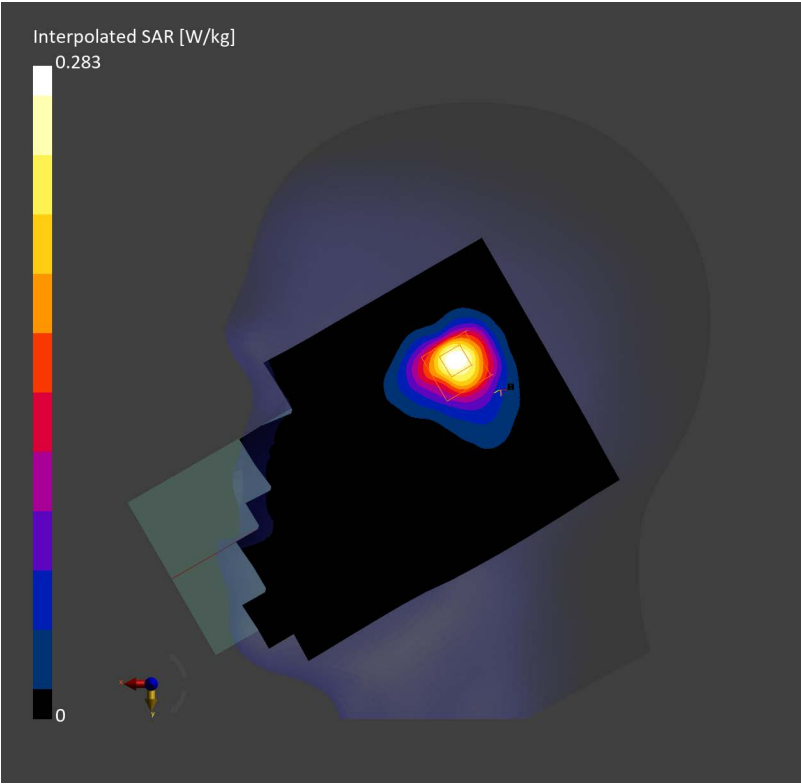
Phantom	TSL	Probe, Calibration Date	DAE, Calibration Date
Twin-SAM V8.0 (30deg probe tilt) - 2168	HSL2450	EX3DV4 - SN7812, 2024-06-25	DAE4ip Sn1846, 2024-12-10

Scans Setup

	Area Scan	Zoom Scan
Grid Extents [mm]	120.0 x 192.0	30.0 x 30.0 x 30.0
Grid Steps [mm]	12.0 x 12.0	5.0 x 5.0 x 5.0
Sensor Surface [mm]	3.0	1.4
Graded Grid	N/A	Yes
Grading Ratio	N/A	1.5
MAIA	Y	N/A
Surface Detection	All points	All points
Scan Method	Measured	Measured

Measurement Results

	Area Scan	Zoom Scan
Date	2025-04-24, 01:53	2025-04-24, 02:01
psSAR1g [W/Kg]	0.215	0.222
psSAR10g [W/Kg]	0.104	0.098
Power Drift [dB]	0.11	0.06
Power Scaling	Disabled	Disabled
Scaling Factor [dB]		
TSL Correction	No correction	No correction
M2/M1 [%]		41.4
Dist 3dB Peak [mm]		9.3



Device Under Test Properties

Model
PY7-63277Y

Exposure Conditions

Phantom Section, TSL	Position, Test Distance [mm]	Band	Group, UID	Frequency [MHz], Channel Number	Conversion Factor	TSL Conductivity [S/m]	TSL Permittivity
Flat, Head Simulating Liquid	BACK, 5.00	ISM 2.4 GHz Band	Bluetooth, 10035-CAA	2402.000, 0	7.27	1.76	40.5

Hardware Setup

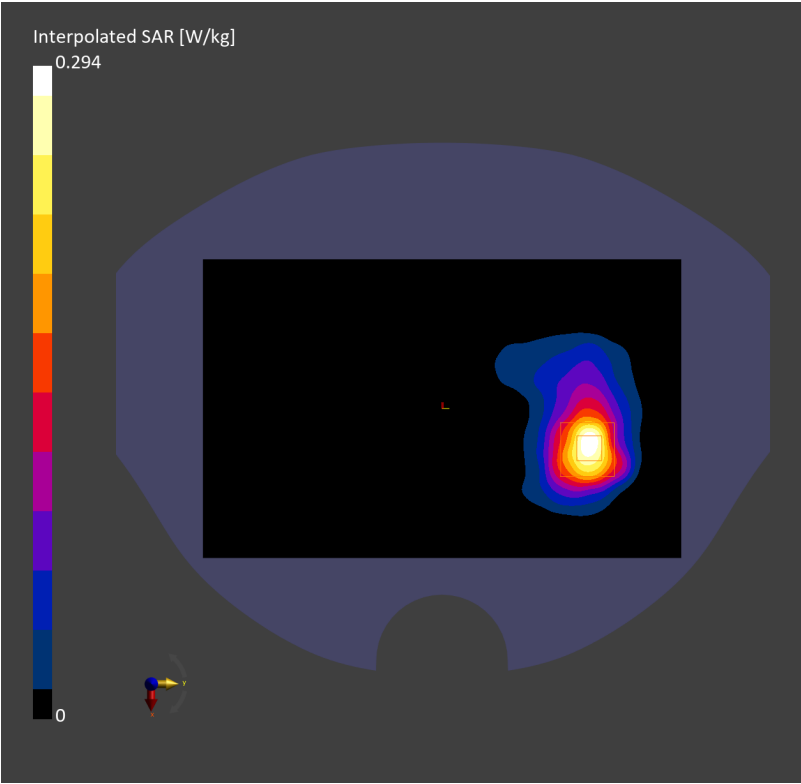
Phantom	TSL	Probe, Calibration Date	DAE, Calibration Date
Twin-SAM V8.0 (30deg probe tilt) - 2168	HSL2450	EX3DV4 - SN7812, 2024-06-25	DAE4ip Sn1846, 2024-12-10

Scans Setup

	Area Scan	Zoom Scan
Grid Extents [mm]	120.0 x 192.0	30.0 x 30.0 x 30.0
Grid Steps [mm]	12.0 x 12.0	5.0 x 5.0 x 5.0
Sensor Surface [mm]	3.0	1.4
Graded Grid	N/A	Yes
Grading Ratio	N/A	1.5
MAIA	N/A	N/A
Surface Detection	VMS + 6p	VMS + 6p
Scan Method	Measured	Measured

Measurement Results

	Area Scan	Zoom Scan
Date	2025-04-24, 03:01	2025-04-24, 03:13
psSAR1g [W/Kg]	0.227	0.258
psSAR10g [W/Kg]	0.110	0.110
Power Drift [dB]	0.01	-0.16
Power Scaling	Disabled	Disabled
Scaling Factor [dB]		
TSL Correction	No correction	No correction
M2/M1 [%]		47.2
Dist 3dB Peak [mm]		9.0



Device Under Test Properties

Model
PY7-63277Y

Exposure Conditions

Phantom Section, TSL	Position, Test Distance [mm]	Band	Group, UID	Frequency [MHz], Channel Number	TSL Conductivity [S/m]	TSL Permittivity
LeftHead, Head Simulating Liquid	CHEEK, 0.00	ISM 2.4 GHz Band	Bluetooth, 10035-CAA	2402.000, 0	1.76	40.5

Hardware Setup

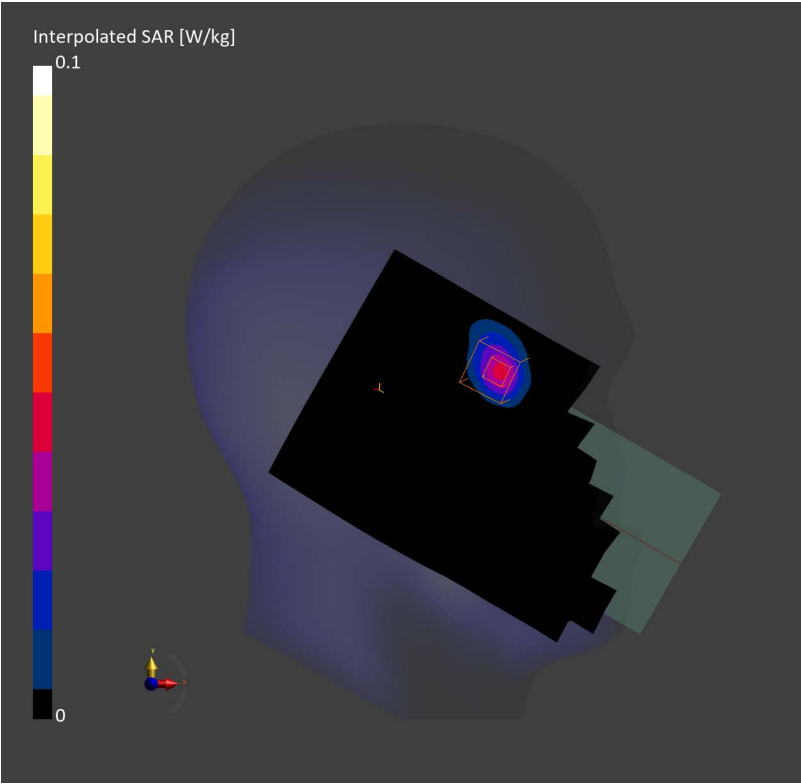
Phantom	TSL	Probe, Calibration Date	DAE, Calibration Date
Twin-SAM V8.0 (30deg probe tilt) - 2168	HSL2450	EX3DV4 - SN7812, 2024-06-25	DAE4ip Sn1846, 2024-12-10

Scans Setup

	Area Scan	Zoom Scan
Grid Extents [mm]	120.0 x 192.0	30.0 x 30.0 x 30.0
Grid Steps [mm]	12.0 x 12.0	5.0 x 5.0 x 5.0
Sensor Surface [mm]	3.0	1.4
Graded Grid	N/A	Yes
Grading Ratio	N/A	1.5
MAIA	Y	Y
Surface Detection	All points	All points
Scan Method	Measured	Measured

Measurement Results

	Area Scan	Zoom Scan
Date	2025-04-24, 04:00	2025-04-24, 04:09
psSAR1g [W/Kg]	0.034	0.028
psSAR10g [W/Kg]	0.015	0.009
Power Drift [dB]	-0.13	0.14
Power Scaling	Disabled	Disabled
Scaling Factor [dB]		
TSL Correction	No correction	No correction
M2/M1 [%]		34.6
Dist 3dB Peak [mm]		8.3



Device Under Test Properties

Model
PY7-63277Y

Exposure Conditions

Phantom Section, TSL	Position, Test Distance [mm]	Band	Group, UID	Frequency [MHz], Channel Number	Conversion Factor	TSL Conductivity [S/m]	TSL Permittivity
Flat, Head Simulating Liquid	BACK, 5.00	ISM 2.4 GHz Band	Bluetooth, 10035-CAA	2402.000, 0	7.27	1.76	40.5

Hardware Setup

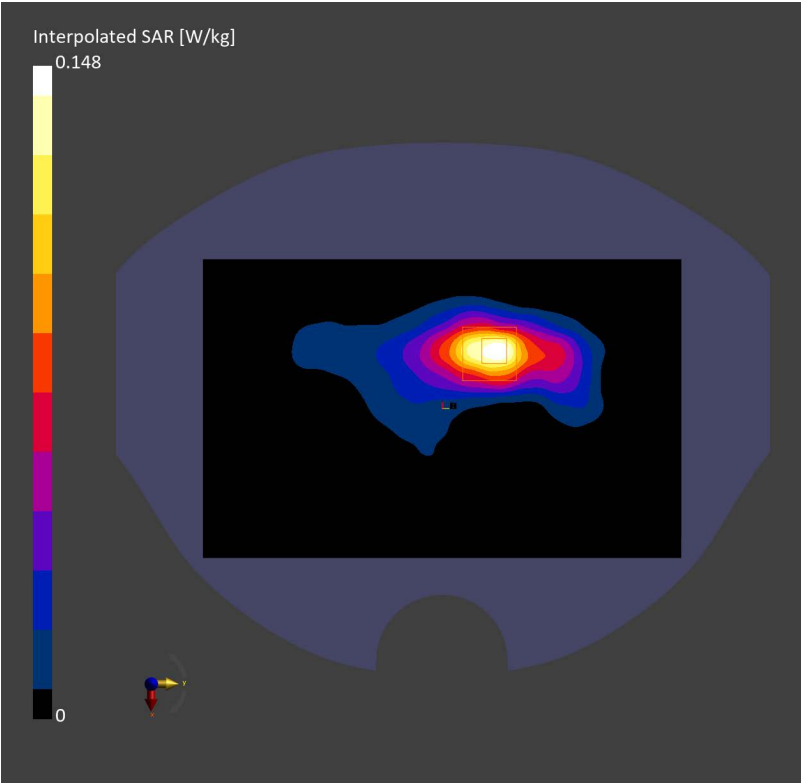
Phantom	TSL	Probe, Calibration Date	DAE, Calibration Date
Twin-SAM V8.0 (30deg probe tilt) – 2168	HSL2450	EX3DV4 – SN7812, 2024-06-25	DAE4ip Sn1846, 2024-12-10

Scans Setup

	Area Scan	Zoom Scan
Grid Extents [mm]	120.0 x 192.0	30.0 x 30.0 x 30.0
Grid Steps [mm]	12.0 x 12.0	5.0 x 5.0 x 5.0
Sensor Surface [mm]	3.0	1.4
Graded Grid	N/A	Yes
Grading Ratio	N/A	1.5
MAIA	Y	Y
Surface Detection	VMS + 6p	VMS + 6p
Scan Method	Measured	Measured

Measurement Results

	Area Scan	Zoom Scan
Date	2025-04-24, 05:23	2025-04-24, 05:28
psSAR1g [W/Kg]	0.115	0.117
psSAR10g [W/Kg]	0.056	0.053
Power Drift [dB]	-0.00	0.03
Power Scaling	Disabled	Disabled
Scaling Factor [dB]		
TSL Correction	No correction	No correction
M2/M1 [%]		49.9
Dist 3dB Peak [mm]		8.6



Device Under Test Properties

Model
PY7-63277Y

Exposure Conditions

Phantom Section, TSL	Position, Test Distance [mm]	Band	Group, UID	Frequency [MHz], Channel Number	Conversion Factor	TSL Conductivity [S/m]	TSL Permittivity
Flat, Head Simulating Liquid	BACK, 0.00	Custom Band	CW, 0--	13.600, 13600	18.19	0.787	56.1

Hardware Setup

Phantom	TSL	Probe, Calibration Date	DAE, Calibration Date
ELI V8.0 (20deg probe tilt) - 2222	HSL3-6GHz	EX3DV4 - SN7858, 2025-02-20	DAE4ip Sn1846, 2024-12-10

Scans Setup

	Area Scan	Zoom Scan
Grid Extents [mm]	140.0 x 220.0	32.0 x 32.0 x 30.0
Grid Steps [mm]	15.0 x 15.0	8.0 x 8.0 x 5.0
Sensor Surface [mm]	3.0	1.4
Graded Grid	N/A	Yes
Grading Ratio	N/A	1.5
MAIA	N/A	N/A
Surface Detection	All points	All points
Scan Method	Measured	Measured

Measurement Results

	Area Scan	Zoom Scan
Date	2025-05-06, 11:27	2025-05-06, 11:43
psSAR1g [W/Kg]	0.076	0.058
psSAR10g [W/Kg]	0.054	0.022
Power Drift [dB]	-0.03	0.10
Power Scaling	Disabled	Disabled
Scaling Factor [dB]		
TSL Correction	No correction	No correction
M2/M1 [%]		59.7
Dist 3dB Peak [mm]		8.3

