

APPENDIX A: SAR TEST PLOTS

ELEMENT

DUT: PY7-58692W; Type: Portable Handset; Serial: 00043

Communication System: UID:10021 - DAC, GSM; MAIA: Y; Frequency: 848.8 MHz
Medium: 835 Head; Medium parameters used:
f = 848.8 MHz; cond = 0.905 S/m; perm = 40.2; density = 1000 kg/m³
Phantom Section: Right Head; Space: 0.00 mm

Test Date: 07/18/2022; Ambient Temp: 20.7°C; Tissue Temp: 20.1°C

Probe: EX3DV4 - SN7552; ConvF:(9.42,9.42,9.42); Calibrated: 2021-09-20
Sensor-Surface: 1.4mm (VMS + 6p)
Electronics: DAE4 Sn1680; Calibrated: 2021-08-04
Phantom: Twin-SAM V8.0; Serial: 2065
Measurement SW: DASY Module SAR V16.0.0.116

Mode: GSM 850, Right Head, Cheek, High Ch.

Area Scan (120.0 x 210.0): Measurement grid: dx=15.0 mm, dy=15.0 mm

Zoom Scan (30.0 x 30.0 x 30.0): Measurement grid: dx=6.0 mm, dy=6.0 mm, dz=1.5 mm; Graded Ratio: 1.5

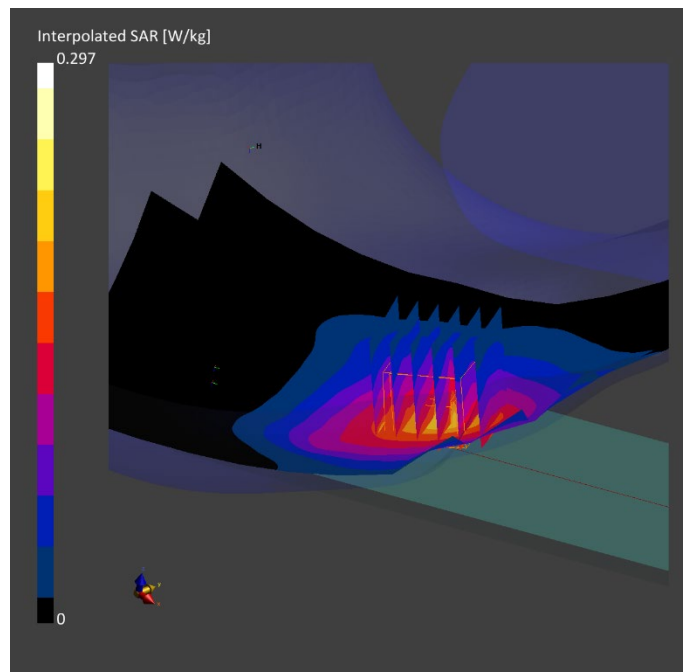
Reference Value = 0.20 W/kg; Power Drift = 0.08 dB

Peak SAR (extrapolated) = 0.297 W/kg

SAR(1 g) = 0.176 W/kg

Smallest distance from peaks to all points 3 dB below is > 15.0 mm

Ratio of SAR at M2 to SAR at M1 = 75.3 %



ELEMENT

DUT: PY7-58692W; Type: Portable Handset; Serial: 99989

Communication System: UID:10027 - DAC, GSM; MAIA: Y; Frequency: 1850.2 MHz

Medium: 1900 Head; Medium parameters used:

f = 1850.2 MHz; cond = 1.40 S/m; perm = 38.4; density = 1000 kg/m³

Phantom Section: Right Head; Space: 0.00 mm

Test Date: 07/13/2022; Ambient Temp: 22.2°C; Tissue Temp: 22.3°C

Probe: EX3DV4 - SN7552; ConvF:(8.08,8.08,8.08); Calibrated: 2021-09-20

Sensor-Surface: 1.4mm (VMS + 6p)

Electronics: DAE4 Sn1680; Calibrated: 2021-08-04

Phantom: Twin-SAM V8.0; Serial: 2065

Measurement SW: DASY Module SAR V16.0.0.116

Mode: GPRS 1900, DTM, Right Head, Cheek, Low Ch., 3 Tx Slots

Area Scan (120.0 x 210.0): Measurement grid: dx=15.0 mm, dy=15.0 mm

Zoom Scan (30.0 x 30.0 x 30.0): Measurement grid: dx=6.0 mm, dy=6.0 mm, dz=1.5 mm; Graded Ratio: 1.5

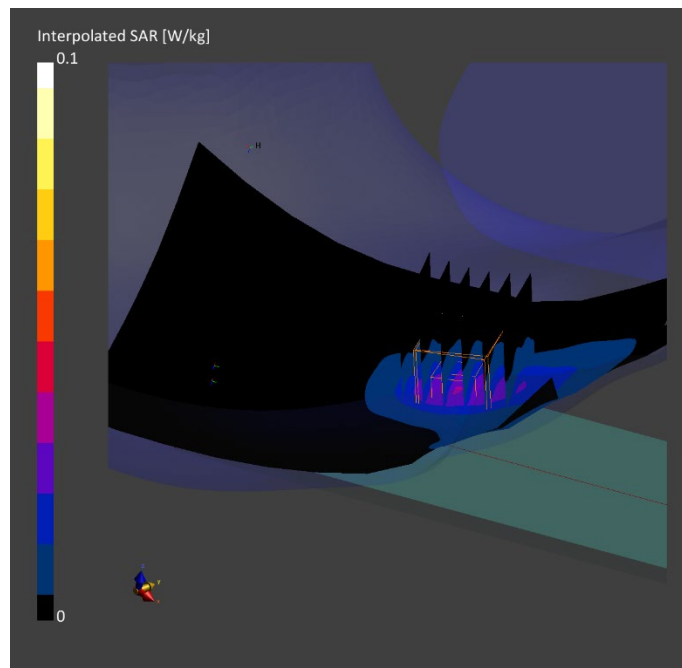
Reference Value = 0.00 W/kg; Power Drift = -0.12 dB

Peak SAR (extrapolated) = 0.054 W/kg

SAR(1 g) = 0.030 W/kg

Smallest distance from peaks to all points 3 dB below is > 15.0 mm

Ratio of SAR at M2 to SAR at M1 = 80.5 %



ELEMENT

DUT: PY7-58692W; Type: Portable Handset; Serial: 00043

Communication System: UID:10011 - CAB, WCDMA; MAIA: Y; Frequency: 836.6 MHz
Medium: 835 Head; Medium parameters used:
f = 836.6 MHz; cond = 0.893 S/m; perm = 40.3; density = 1000 kg/m³
Phantom Section: Left Head; Space: 0.00 mm

Test Date: 07/18/2022; Ambient Temp: 20.7°C; Tissue Temp: 20.1°C

Probe: EX3DV4 - SN7552; ConvF:(9.42,9.42,9.42); Calibrated: 2021-09-20
Sensor-Surface: 1.4mm (VMS + 6p)
Electronics: DAE4 Sn1680; Calibrated: 2021-08-04
Phantom: Twin-SAM V8.0; Serial: 2065
Measurement SW: DASY Module SAR V16.0.2.83

Mode: UMTS 850, Left Head, Cheek, Mid Ch.

Area Scan (120.0 x 210.0): Measurement grid: dx=15.0 mm, dy=15.0 mm

Zoom Scan (30.0 x 30.0 x 30.0): Measurement grid: dx=6.0 mm, dy=6.0 mm, dz=1.5 mm; Graded Ratio: 1.5

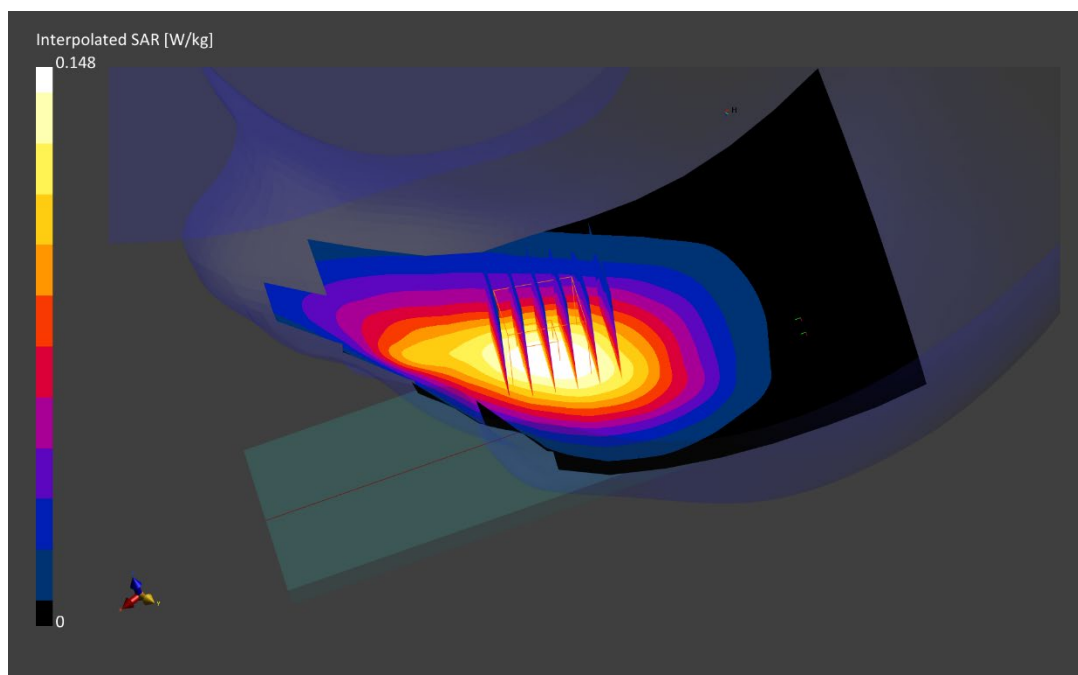
Reference Value = 0.11 W/kg; Power Drift = 0.04 dB

Peak SAR (extrapolated) = 0.148 W/kg

SAR(1 g) = 0.107 W/kg

Smallest distance from peaks to all points 3 dB below is > 15.0 mm

Ratio of SAR at M2 to SAR at M1 = 88.9 %



ELEMENT

DUT: PY7-58692W; Type: Portable Handset; Serial: 99948

Communication System: UID:10011 - CAB, WCDMA; MAIA: Y; Frequency: 1752.6 MHz

Medium: 1750 Head; Medium parameters used:

f = 1752.6 MHz; cond = 1.42 S/m; perm = 39.6; density = 1000 kg/m³

Phantom Section: Right Head; Space: 0.00 mm

Test Date: 07/17/2022; Ambient Temp: 21.0°C; Tissue Temp: 20.5°C

Probe: EX3DV4 - SN7552; ConvF:(8.32,8.32,8.32); Calibrated: 2021-09-20

Sensor-Surface: 1.4mm (VMS + 6p)

Electronics: DAE4 Sn1680; Calibrated: 2021-08-04

Phantom: Twin-SAM V8.0; Serial: 2065

Measurement SW: DASY Module SAR V16.0.2.83

Mode: UMTS 1750, Right Head, Cheek, High Ch.

Area Scan (120.0 x 210.0): Measurement grid: dx=15.0 mm, dy=15.0 mm

Zoom Scan (30.0 x 30.0 x 30.0): Measurement grid: dx=6.0 mm, dy=6.0 mm, dz=1.5 mm; Graded Ratio: 1.5

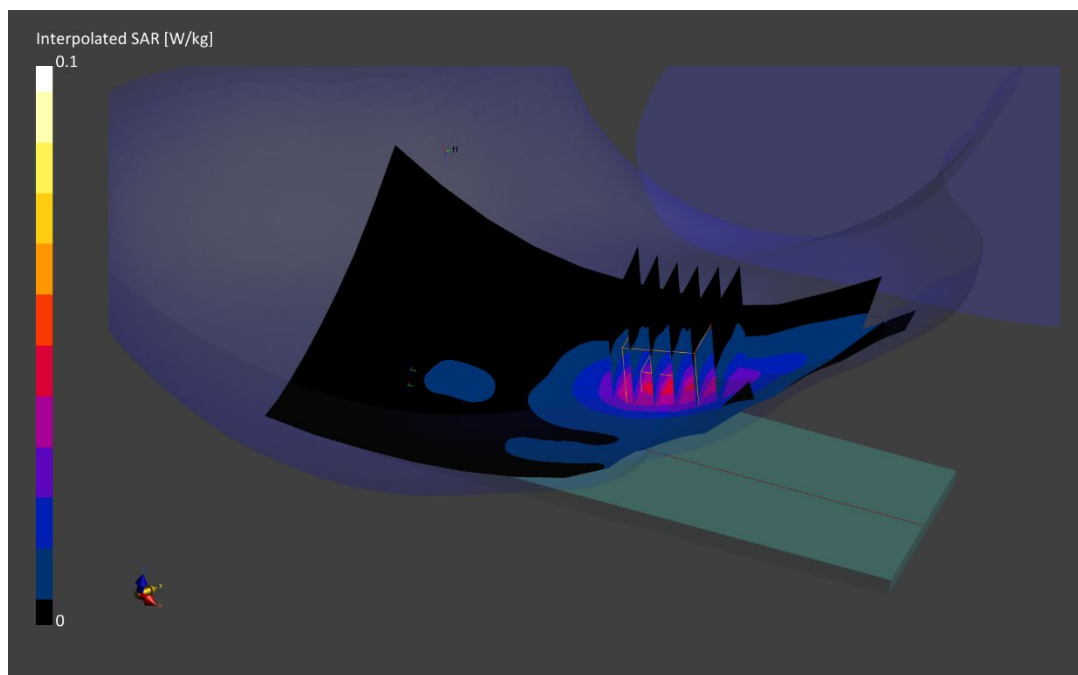
Reference Value = 0.04 W/kg; Power Drift = -0.18 dB

Peak SAR (extrapolated) = 0.064 W/kg

SAR(1 g) = 0.037 W/kg

Smallest distance from peaks to all points 3 dB below is > 15.0 mm

Ratio of SAR at M2 to SAR at M1 = 83.4 %



ELEMENT

DUT: PY7-58692W; Type: Portable Handset; Serial: 99948

Communication System: UID:10011 - CAB, WCDMA; MAIA: Y; Frequency: 1852.4 MHz

Medium: 1900 Head; Medium parameters used:

f = 1852.4 MHz; cond = 1.40 S/m; perm = 38.4; density = 1000 kg/m³

Phantom Section: Right Head; Space: 0.00 mm

Test Date: 07/13/2022; Ambient Temp: 22.2°C; Tissue Temp: 22.3°C

Probe: EX3DV4 - SN7552; ConvF:(8.08,8.08,8.08); Calibrated: 2021-09-20

Sensor-Surface: 1.4mm (VMS + 6p)

Electronics: DAE4 Sn1680; Calibrated: 2021-08-04

Phantom: Twin-SAM V8.0; Serial: 2065

Measurement SW: DASY Module SAR V16.0.2.83

Mode: UMTS 1900, Right Head, Cheek, Low Ch.

Area Scan (120.0 x 210.0): Measurement grid: dx=15.0 mm, dy=15.0 mm

Zoom Scan (30.0 x 30.0 x 30.0): Measurement grid: dx=6.0 mm, dy=6.0 mm, dz=1.5 mm; Graded Ratio: 1.5

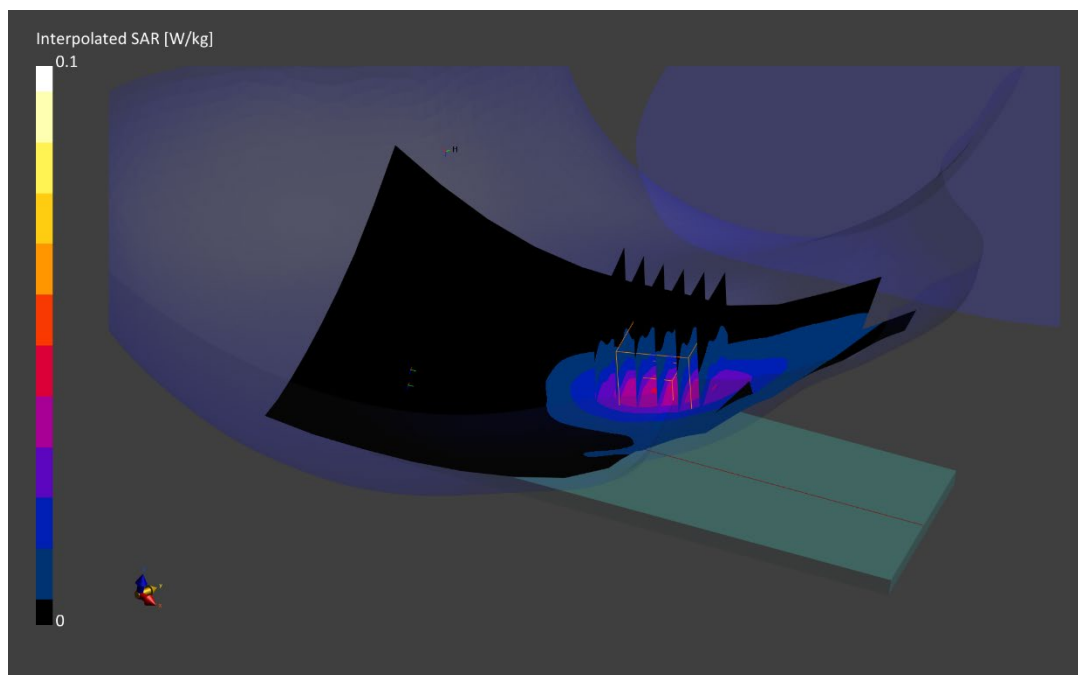
Reference Value = 0.04 W/kg; Power Drift = 0.05 dB

Peak SAR (extrapolated) = 0.059 W/kg

SAR(1 g) = 0.038 W/kg

Smallest distance from peaks to all points 3 dB below is > 15.0 mm

Ratio of SAR at M2 to SAR at M1 = 86.2 %



ELEMENT

DUT: PY7-58692W; Type: Portable Handset; Serial: 99989

Communication System: UID:10175 - CAG, LTE-FDD; MAIA: Y; Frequency: 707.5 MHz
Medium: 750 Head; Medium parameters used:
f = 707.5 MHz; cond = 0.878 S/m; perm = 43.9; density = 1000 kg/m³
Phantom Section: Left Head; Space: 0.00 mm

Test Date: 07/20/2022; Ambient Temp: 21.0°C; Tissue Temp: 20.5°C

Probe: EX3DV4 - SN7552; ConvF:(9.85,9.85,9.85); Calibrated: 2021-09-20
Sensor-Surface: 1.4mm (VMS + 6p)
Electronics: DAE4 Sn1680; Calibrated: 2021-08-04
Phantom: Twin-SAM V8.0; Serial: 2065
Measurement SW: DASY Module SAR V16.0.2.83

**Mode: LTE Band 12, Left Head, Cheek, Mid Ch.,
10 MHz Bandwidth, QPSK, 1 RB, 49 RB Offset**

Area Scan (120.0 x 210.0): Measurement grid: dx=15.0 mm, dy=15.0 mm

Zoom Scan (30.0 x 30.0 x 30.0): Measurement grid: dx=6.0 mm, dy=6.0 mm, dz=1.5 mm; Graded Ratio: 1.5

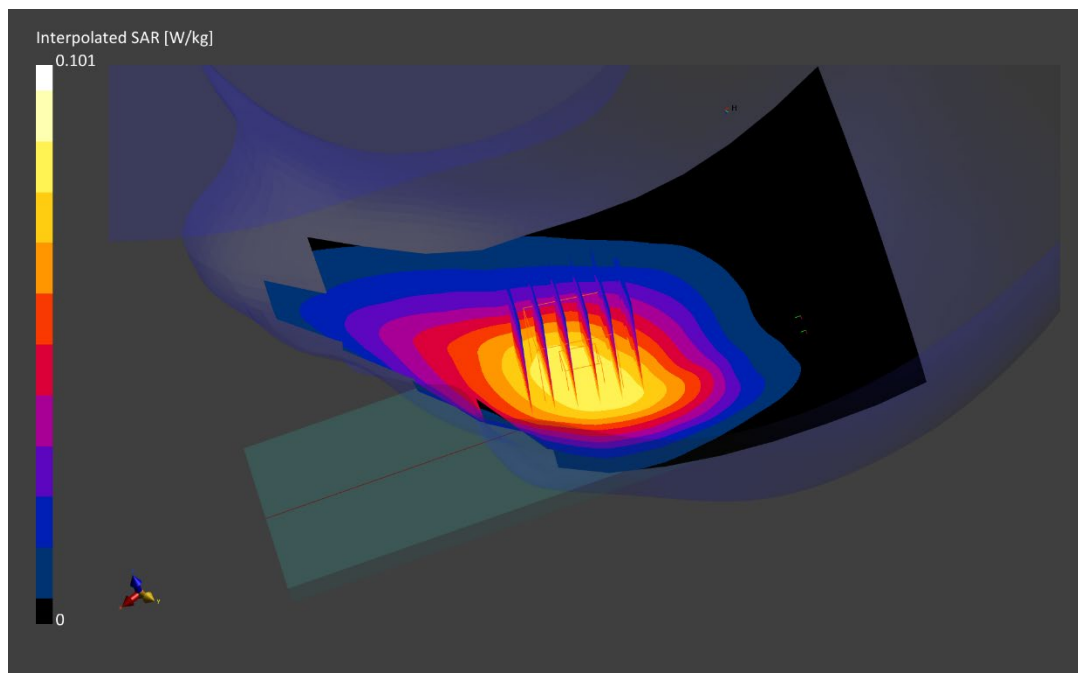
Reference Value = 0.08 W/kg; Power Drift = 0.06 dB

Peak SAR (extrapolated) = 0.101 W/kg

SAR(1 g) = 0.080 W/kg

Smallest distance from peaks to all points 3 dB below is > 15.0 mm

Ratio of SAR at M2 to SAR at M1 = 92.2 %



ELEMENT

DUT: PY7-58692W; Type: Portable Handset; Serial: 99989

Communication System: UID:10175 - CAG, LTE-FDD; MAIA: Y; Frequency: 782.0 MHz
Medium: 750 Head; Medium parameters used:
f = 782.0 MHz; cond = 0.904 S/m; perm = 43.7; density = 1000 kg/m³
Phantom Section: Right Head; Space: 0.00 mm

Test Date: 07/20/2022; Ambient Temp: 21.0°C; Tissue Temp: 20.5°C

Probe: EX3DV4 - SN7552; ConvF:(9.85,9.85,9.85); Calibrated: 2021-09-20
Sensor-Surface: 1.4mm (VMS + 6p)
Electronics: DAE4 Sn1680; Calibrated: 2021-08-04
Phantom: Twin-SAM V8.0; Serial: 2065
Measurement SW: DASY Module SAR V16.0.2.83

**Mode: LTE Band 13, Right Head, Cheek, Mid Ch.,
10 MHz Bandwidth, QPSK, 1 RB, 0 RB Offset**

Area Scan (120.0 x 210.0): Measurement grid: dx=15.0 mm, dy=15.0 mm

Zoom Scan (30.0 x 30.0 x 30.0): Measurement grid: dx=6.0 mm, dy=6.0 mm, dz=1.5 mm; Graded Ratio: 1.5

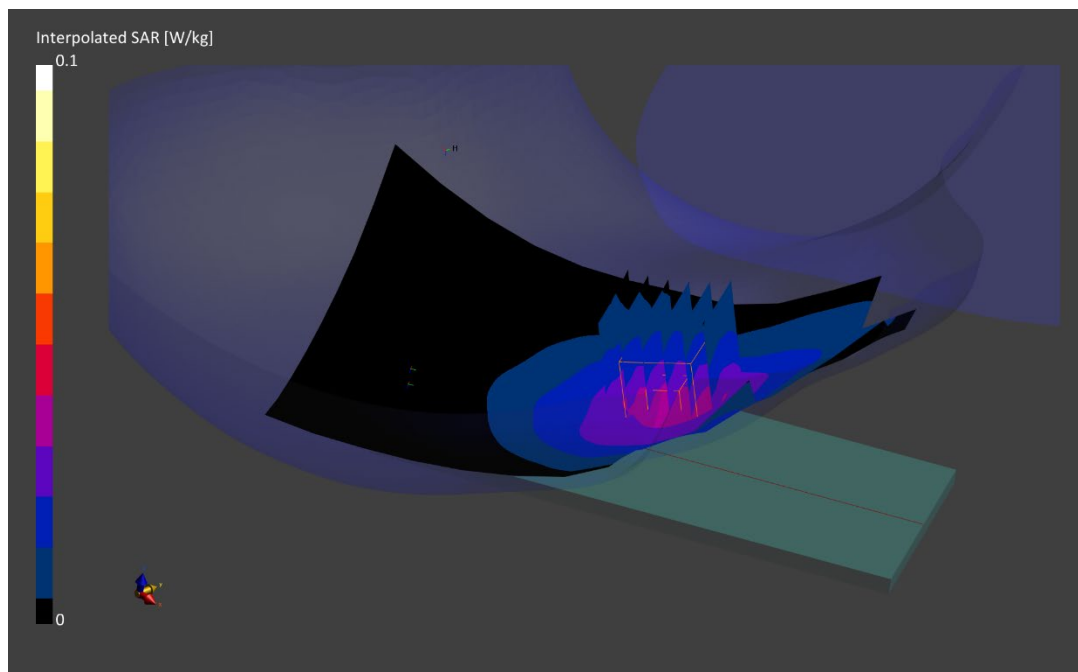
Reference Value = 0.04 W/kg; Power Drift = -0.01 dB

Peak SAR (extrapolated) = -0.01 W/kg

SAR(1 g) = 0.037 W/kg

Smallest distance from peaks to all points 3 dB below is > 15.0 mm

Ratio of SAR at M2 to SAR at M1 = 91.9 %



ELEMENT

DUT: PY7-58692W; Type: Portable Handset; Serial: 84429

Communication System: UID:10175 - CAG, LTE-FDD; MAIA: Y; Frequency: 836.5 MHz
Medium: 835 Head; Medium parameters used:
f = 836.5 MHz; cond = 0.893 S/m; perm = 40.3; density = 1000 kg/m³
Phantom Section: Left Head; Space: 0.00 mm

Test Date: 07/18/2022; Ambient Temp: 20.7°C; Tissue Temp: 20.1°C

Probe: EX3DV4 - SN7552; ConvF:(9.42,9.42,9.42); Calibrated: 2021-09-20
Sensor-Surface: 1.4mm (VMS + 6p)
Electronics: DAE4 Sn1680; Calibrated: 2021-08-04
Phantom: Twin-SAM V8.0; Serial: 2065
Measurement SW: DASY Module SAR V16.0.2.83

**Mode: LTE Band 5, Left Head, Cheek, Mid Ch.,
10 MHz Bandwidth, QPSK, 1 RB, 49 RB Offset**

Area Scan (120.0 x 210.0): Measurement grid: dx=15.0 mm, dy=15.0 mm

Zoom Scan (30.0 x 30.0 x 30.0): Measurement grid: dx=6.0 mm, dy=6.0 mm, dz=1.5 mm; Graded Ratio: 1.5

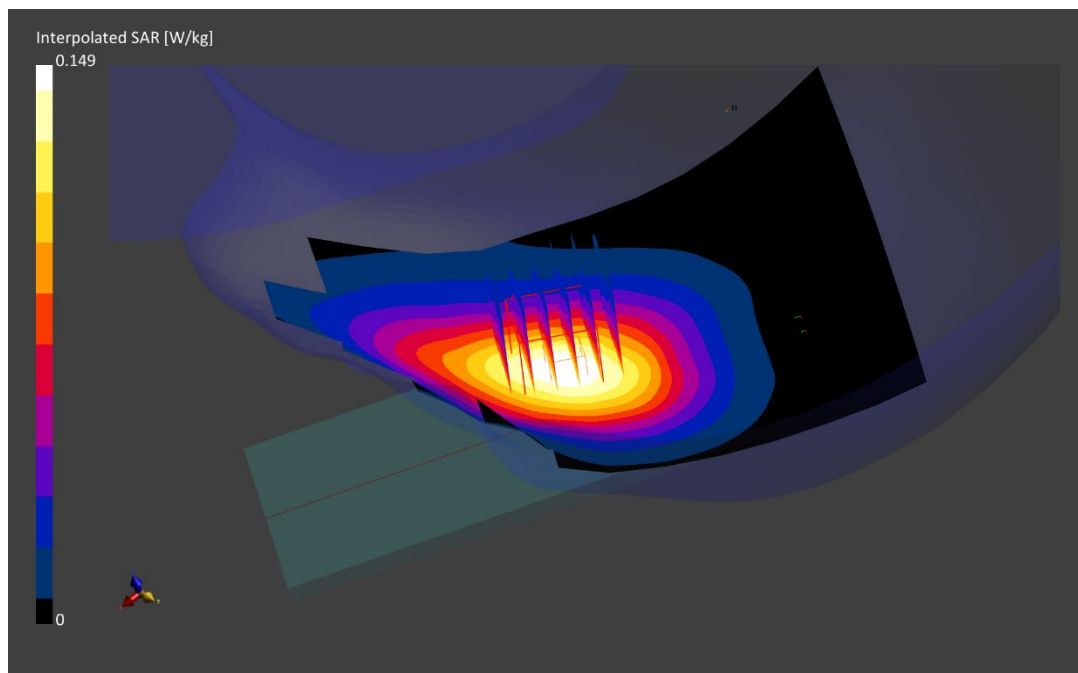
Reference Value = 0.11 W/kg; Power Drift = 0.02 dB

Peak SAR (extrapolated) = 0.149 W/kg

SAR(1 g) = 0.109 W/kg

Smallest distance from peaks to all points 3 dB below is 19.5 mm

Ratio of SAR at M2 to SAR at M1 = 90.2 %



ELEMENT

DUT: PY7-58692W; Type: Portable Handset; Serial: 99989

Communication System: UID:10297 - AAD, LTE-FDD; MAIA: Y; Frequency: 1720.0 MHz

Medium: 1750 Head; Medium parameters used:

f = 1720.0 MHz; cond = 1.39 S/m; perm = 39.8; density = 1000 kg/m³

Phantom Section: Right Head; Space: 0.00 mm

Test Date: 07/17/2022; Ambient Temp: 21.0°C; Tissue Temp: 20.5°C

Probe: EX3DV4 - SN7552; ConvF:(8.32,8.32,8.32); Calibrated: 2021-09-20

Sensor-Surface: 1.4mm (VMS + 6p)

Electronics: DAE4 Sn1680; Calibrated: 2021-08-04

Phantom: Twin-SAM V8.0; Serial: 2065

Measurement SW: DASY Module SAR V16.0.0.116

**Mode: LTE Band 66 (AWS), Right Head, Cheek, Low Ch.,
20 MHz Bandwidth, QPSK, 50 RB, 25 RB Offset**

Area Scan (120.0 x 210.0): Measurement grid: dx=15.0 mm, dy=15.0 mm

Zoom Scan (30.0 x 30.0 x 30.0): Measurement grid: dx=6.0 mm, dy=6.0 mm, dz=1.5 mm; Graded Ratio: 1.5

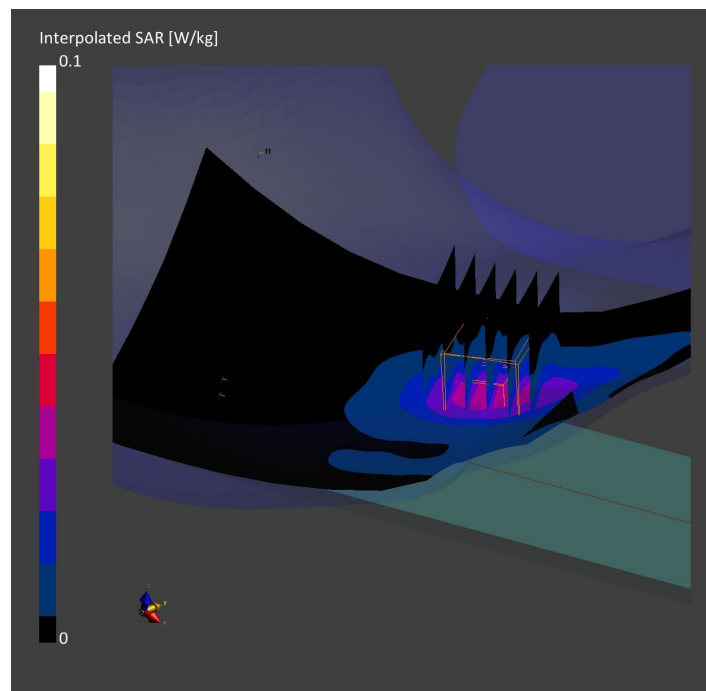
Reference Value = 0.03 W/kg; Power Drift = 0.09 dB

Peak SAR (extrapolated) = 0.057 W/kg

SAR(1 g) = 0.035 W/kg

Smallest distance from peaks to all points 3 dB below is > 15.0 mm

Ratio of SAR at M2 to SAR at M1 = 88.3 %



ELEMENT

DUT: PY7-58692W; Type: Portable Handset; Serial: 84429

Communication System: UID:10297 - AAD, LTE-FDD; MAIA: Y; Frequency: 1905.0 MHz

Medium: 1900 Head; Medium parameters used:

f = 1905.0 MHz; cond = 1.45 S/m; perm = 38.1; density = 1000 kg/m³

Phantom Section: Right Head; Space: 0.00 mm

Test Date: 07/13/2022; Ambient Temp: 22.2°C; Tissue Temp: 22.3°C

Probe: EX3DV4 - SN7552; ConvF:(8.08,8.08,8.08); Calibrated: 2021-09-20

Sensor-Surface: 1.4mm (VMS + 6p)

Electronics: DAE4 Sn1680; Calibrated: 2021-08-04

Phantom: Twin-SAM V8.0; Serial: 2065

Measurement SW: DASY Module SAR V16.0.2.83

**Mode: LTE Band 25, Right Head, Cheek, High Ch.,
20 MHz Bandwidth, QPSK, 50 RB, 0 RB Offset**

Area Scan (120.0 x 210.0): Measurement grid: dx=15.0 mm, dy=15.0 mm

Zoom Scan (30.0 x 30.0 x 30.0): Measurement grid: dx=6.0 mm, dy=6.0 mm, dz=1.5 mm; Graded Ratio: 1.5

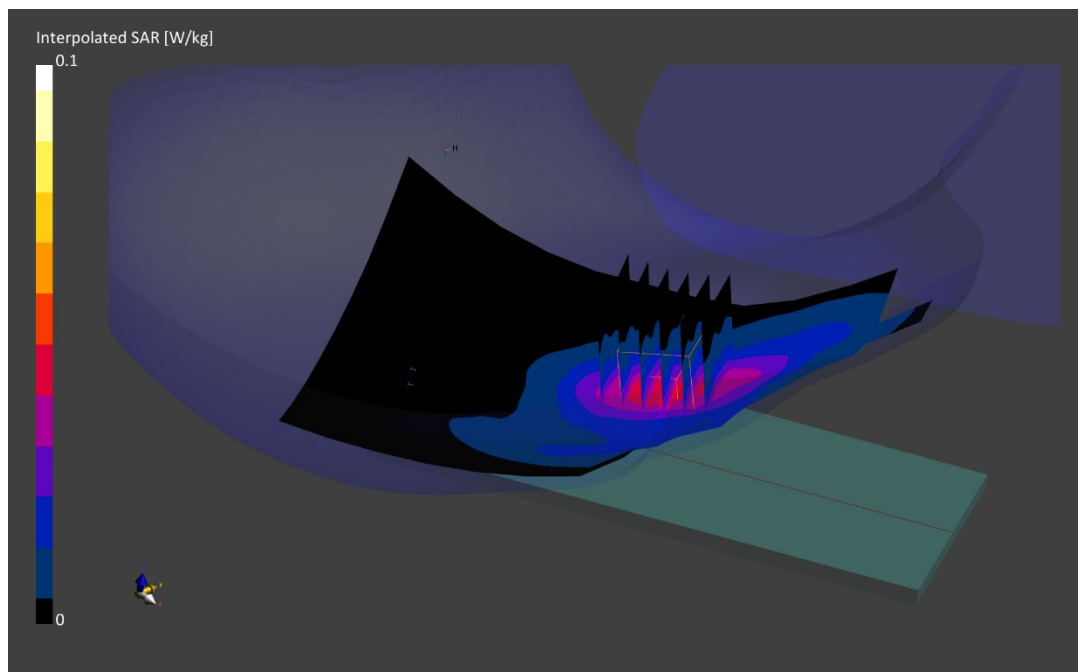
Reference Value = 0.04 W/kg; Power Drift = -0.12 dB

Peak SAR (extrapolated) = 0.067 W/kg

SAR(1 g) = 0.042 W/kg

Smallest distance from peaks to all points 3 dB below is > 15.0 mm

Ratio of SAR at M2 to SAR at M1 = 86.9 %



ELEMENT

DUT: PY7-58692W; Type: Portable Handset; Serial: 99989

Communication System: UID:10435 - AAF, LTE-TDD; MAIA: Y; Frequency: 2593.0 MHz

Medium: 2450 Head; Medium parameters used:

f = 2593.0 MHz; cond = 2.00 S/m; perm = 40.1; density = 1000 kg/m³

Phantom Section: Left Head; Space: 0.00 mm

Test Date: 07/18/2022; Ambient Temp: 23.1°C; Tissue Temp: 21.6°C

Probe: EX3DV4 - SN7409; ConvF:(6.97,6.97,6.97); Calibrated: 2022-06-16

Sensor-Surface: 1.4mm (VMS + 6p)

Electronics: DAE4 Sn1334; Calibrated: 2022-06-14

Phantom: Twin-SAM V5.0; Serial: 1792

Measurement SW: DASY Module SAR V16.0.2.136

**Mode: LTE Band 41, Left Head, Cheek, Mid Ch.,
20 MHz Bandwidth, QPSK, 1 RB, 0 RB Offset**

Area Scan (100.0 x 200.0): Measurement grid: dx=10.0 mm, dy=10.0 mm

Zoom Scan (30.0 x 30.0 x 30.0): Measurement grid: dx=5.0 mm, dy=5.0 mm, dz=1.5 mm; Graded Ratio: 1.5

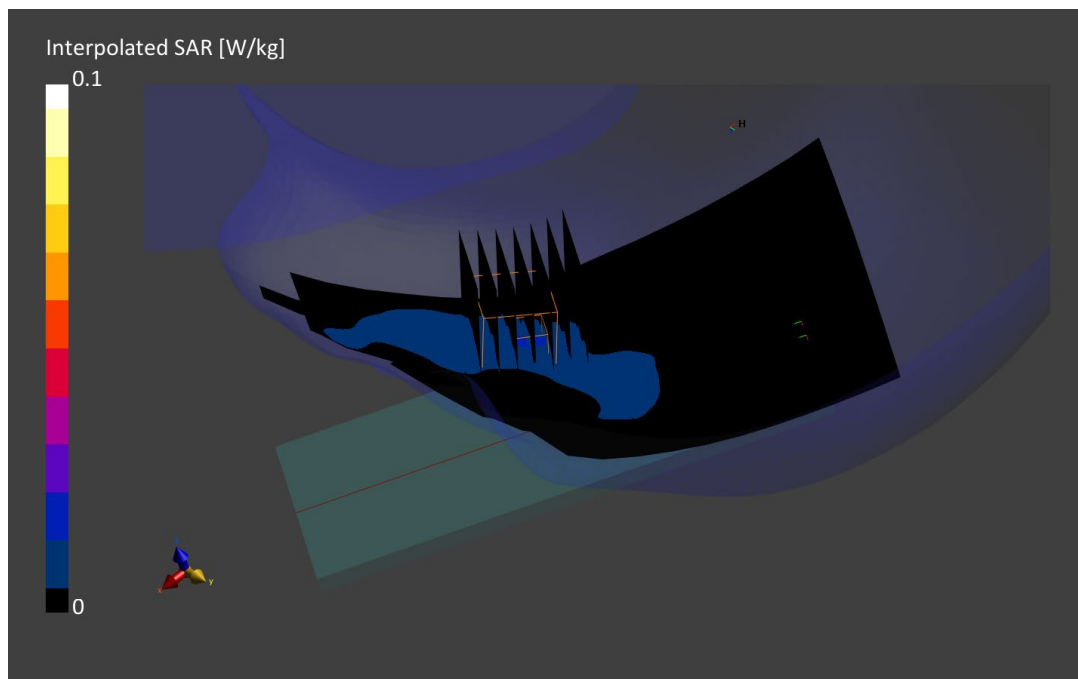
Reference Value = 0.01 W/kg; Power Drift = 0.07 dB

Peak SAR (extrapolated) = 0.028 W/kg

SAR(1 g) = 0.015 W/kg

Smallest distance from peaks to all points 3 dB below is > 15.0 mm

Ratio of SAR at M2 to SAR at M1 = 83.0 %



ELEMENT

DUT: PY7-58692W; Type: Portable Handset; Serial: 99609

Communication System: UID:10415 - AAA, WLAN; MAIA: Y; Frequency: 2462.0 MHz

Medium: 2450 Head; Medium parameters used:

f = 2462.0 MHz; cond = 1.88 S/m; perm = 40.3; density = 1000 kg/m³

Phantom Section: RightHead; Space: 0.00 mm

Test Date: 07/28/2022; Ambient Temp: 21.9°C; Tissue Temp: 21.7°C

Probe: EX3DV4 - SN7538; ConvF:(7.58,7.58,7.58); Calibrated: 2021-11-16

Sensor-Surface: 1.4mm (VMS + 6p)

Electronics: DAE4 Sn1323; Calibrated: 2021-11-10

Phantom: Twin-SAM V8.0; Serial: 2056

Measurement SW: DASY Module SAR V16.0.2.83

**Mode: IEEE 802.11b, Chain 0, 22 MHz Bandwidth,
Right Head, Cheek, Ch.11, 1 Mbps**

Area Scan (100.0 x 200.0): Measurement grid: dx=10.0 mm, dy=10.0 mm

Zoom Scan (30.0 x 30.0 x 30.0): Measurement grid: dx=4.1 mm, dy=4.1 mm, dz=1.4 mm; Graded Ratio: 1.4

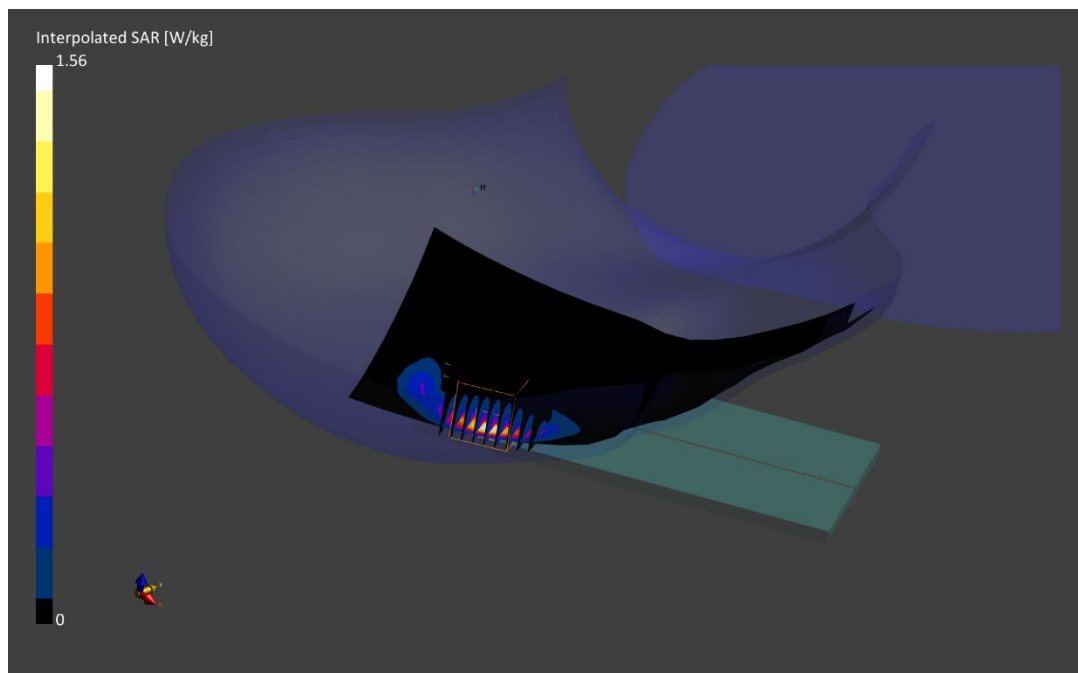
Reference Value = 0.61 W/kg; Power Drift = 0.11 dB

Peak SAR (extrapolated) = 1.56 W/kg

SAR(1 g) = 0.571 W/kg

Smallest distance from peaks to all points 3 dB below is 5.1 mm

Ratio of SAR at M2 to SAR at M1 = 73.4 %



ELEMENT

DUT: PY7-58692W; Type: Portable Handset; Serial: 99823

Communication System: UID:10544 - AAC, WLAN; MAIA: Y; Frequency: 5290.0 MHz
Medium: 5200-5800 Head; Medium parameters used:
f = 5290.0 MHz; cond = 4.60 S/m; perm = 35.0; density = 1000 kg/m³
Phantom Section: Right Head; Space: 0.00 mm

Test Date: 07/11/2022; Ambient Temp: 23.3°C; Tissue Temp: 21.7°C

Probe: EX3DV4 - SN7417; ConvF:(5.57,5.57,5.57); Calibrated: 2022-02-22
Sensor-Surface: 1.4mm (VMS + 6p)
Electronics: DAE4 Sn665; Calibrated: 2022-02-22
Phantom: Twin-SAM V8.0; Serial: 2060
Measurement SW: DASY Module SAR V16.0.2.83

**Mode: IEEE 802.11ac, Chain 0, U-NII-2A,
80 MHz Bandwidth, Right Head, Cheek, Ch. 58, 29.3 Mbps**

Area Scan (100.0 x 200.0): Measurement grid: dx=10.0 mm, dy=10.0 mm

Zoom Scan (22.0 x 22.0 x 22.0): Measurement grid: dx=3.33 mm, dy=3.33 mm, dz=1.4 mm; Graded Ratio: 1.4

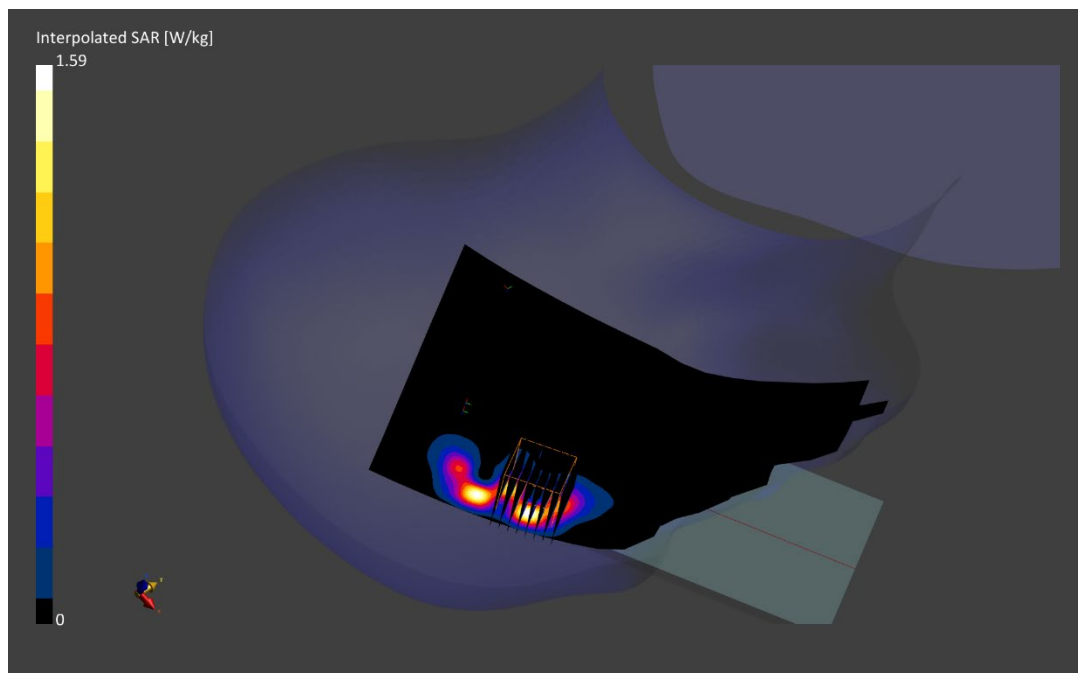
Reference Value = 0.37 W/kg; Power Drift = -0.02 dB

Peak SAR (extrapolated) = 1.59 W/kg

SAR(1 g) = 0.332 W/kg

Smallest distance from peaks to all points 3 dB below is 3.4 mm

Ratio of SAR at M2 to SAR at M1 = 62.3 %



ELEMENT

DUT: PY7-58692W; Type: Portable Handset; Serial: 99666

Communication System: UID:10032 - CAA, Bluetooth; MAIA: Y; Frequency: 2480.0 MHz
Medium: 2450 Head; Medium parameters used:
f = 2480.0 MHz; cond = 1.80 S/m; perm = 39.4; density = 1000 kg/m³
Phantom Section: Right Head; Space: 0.00 mm

Test Date: 07/11/2022; Ambient Temp: 23.2°C; Tissue Temp: 21.5°C

Probe: EX3DV4 - SN7409; ConvF:(7.21,7.21,7.21); Calibrated: 2022-06-16
Sensor-Surface: 1.4mm (VMS + 6p)
Electronics: DAE4 Sn1334; Calibrated: 2022-06-14
Phantom: Twin-SAM V5.0; Serial: 1792
Measurement SW: DASY Module SAR V16.0.2.136

Mode: Bluetooth, Chain 0, Right Head, Cheek, Ch. 78, 1 Mbps

Area Scan (100.0 x 200.0): Measurement grid: dx=10.0 mm, dy=10.0 mm

Zoom Scan (30.0 x 30.0 x 30.0): Measurement grid: dx=3.6 mm, dy=3.6 mm, dz=1.4 mm; Graded Ratio: 1.4

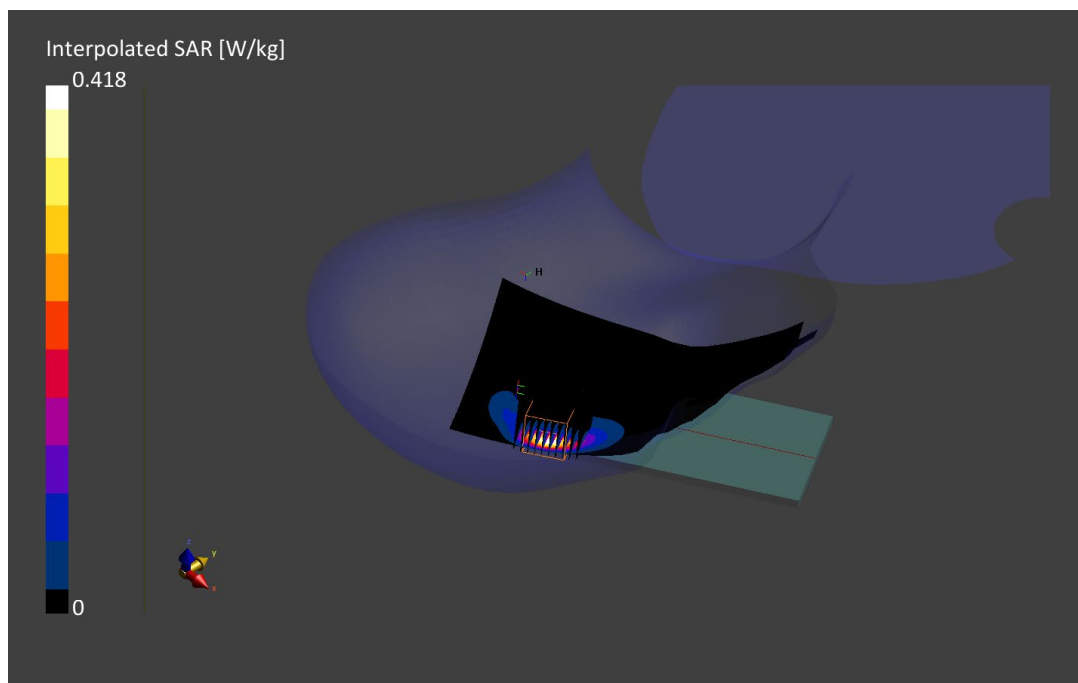
Reference Value = 0.13 W/kg; Power Drift = 0.00 dB

Peak SAR (extrapolated) = 0.418 W/kg

SAR(1 g) = 0.148 W/kg

Smallest distance from peaks to all points 3 dB below is 5.1 mm

Ratio of SAR at M2 to SAR at M1 = 75.8 %



ELEMENT

DUT: PY7-58692W; Type: Portable Handset; Serial: 99948

Communication System: UID:10021 - DAC, GSM; MAIA: Y; Frequency: 848.8 MHz
Medium: 835 Body; Medium parameters used:
f = 848.8 MHz; cond = 0.961 S/m; perm = 55.0; density = 1000 kg/m³
Phantom Section: Flat; Space: 10.00 mm

Test Date: 07/14/2022; Ambient Temp: 21.9°C; Tissue Temp: 21.3°C

Probe: EX3DV4 - SN7660; ConvF:(10.61,10.61,10.61); Calibrated: 2022-05-18
Sensor-Surface: 1.4mm (VMS + 6p)
Electronics: DAE4 Sn1678; Calibrated: 2022-05-10
Phantom: Twin-SAM V5.0; Serial: 1692rightback
Measurement SW: DASY Module SAR V16.0.2.136

Mode: GSM 850, Body SAR, Back Side, High Ch.

Area Scan (120.0 x 210.0): Measurement grid: dx=15.0 mm, dy=15.0 mm

Zoom Scan (30.0 x 30.0 x 30.0): Measurement grid: dx=6.0 mm, dy=6.0 mm, dz=1.5 mm; Graded Ratio: 1.5

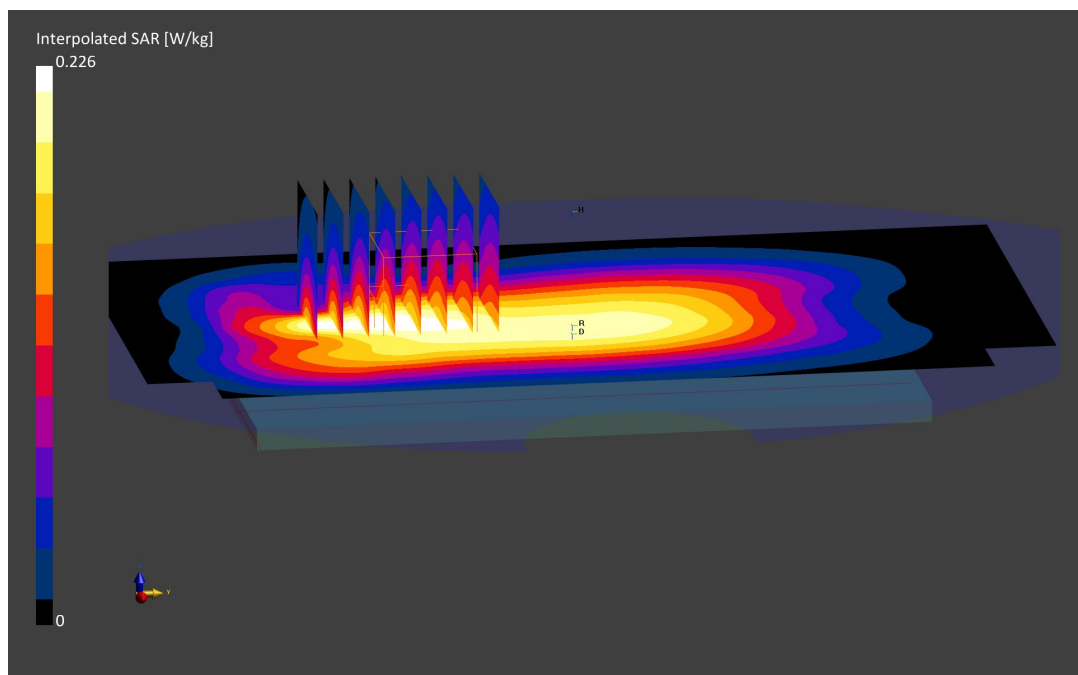
Reference Value = 0.15 W/kg; Power Drift = 0.00 dB

Peak SAR (extrapolated) = 0.226 W/kg

SAR(1 g) = 0.165 W/kg

Smallest distance from peaks to all points 3 dB below is 15.0 mm

Ratio of SAR at M2 to SAR at M1 = 89.7 %



ELEMENT

DUT: PY7-58692W; Type: Portable Handset; Serial: 99948

Communication System: UID:10027 - DAC, GSM; MAIA: Y; Frequency: 1850.2 MHz

Medium: 1900 Body; Medium parameters used:

f = 1850.2 MHz; cond = 1.51 S/m; perm = 52.2; density = 1000 kg/m³

Phantom Section: Flat; Space: 10.00 mm

Test Date: 07/18/2022; Ambient Temp: 21.3°C; Tissue Temp: 21.1°C

Probe: EX3DV4 - SN7538; ConvF:(8.28,8.28,8.28); Calibrated: 2021-11-16

Sensor-Surface: 1.4mm (VMS + 6p)

Electronics: DAE4 Sn1323; Calibrated: 2021-11-10

Phantom: Twin-SAM V8.0; Serial: 2056

Measurement SW: DASY Module SAR V16.0.2.83

Mode: GPRS 1900, DTM, Body SAR, Back Side, Low Ch., 3 Tx Slots

Area Scan (120.0 x 210.0): Measurement grid: dx=15.0 mm, dy=15.0 mm

Zoom Scan (30.0 x 30.0 x 30.0): Measurement grid: dx=6.0 mm, dy=6.0 mm, dz=1.5 mm; Graded Ratio: 1.5

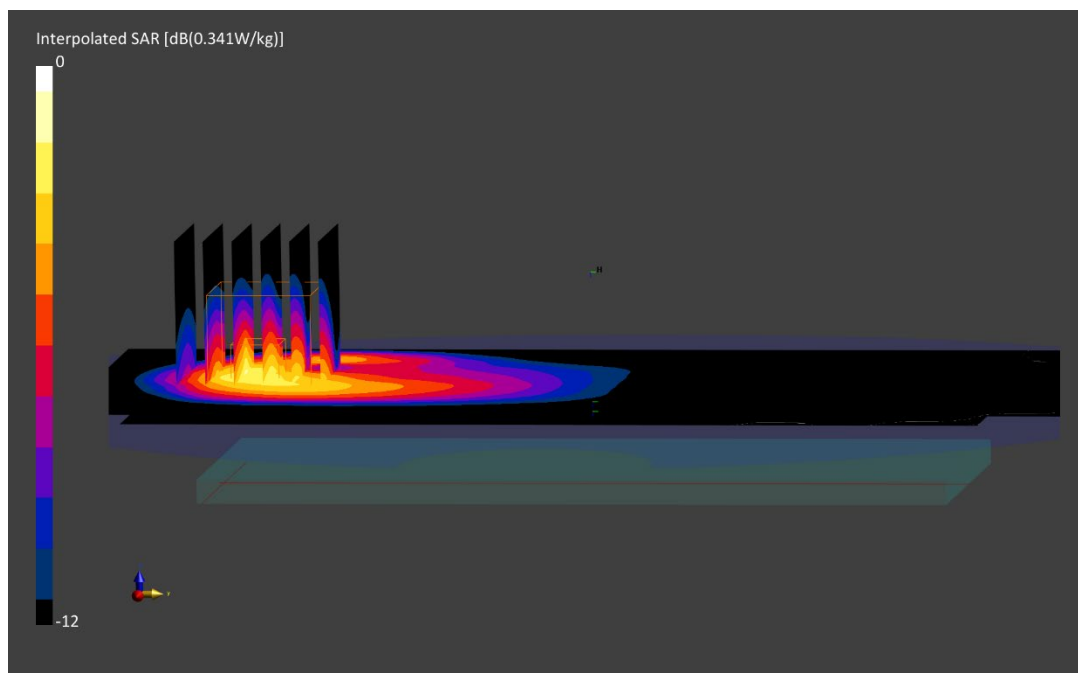
Reference Value = 0.20 W/kg; Power Drift = 0.06 dB

Peak SAR (extrapolated) = 0.341 W/kg

SAR(1 g) = 0.182 W/kg

Smallest distance from peaks to all points 3 dB below is 8.7 mm

Ratio of SAR at M2 to SAR at M1 = 83.5 %



ELEMENT

DUT: PY7-58692W; Type: Portable Handset; Serial: 99948

Communication System: UID:10011 - CAB, WCDMA; MAIA: Y; Frequency: 836.6 MHz
Medium: 835 Body; Medium parameters used:
f = 836.6 MHz; cond = 0.948 S/m; perm = 55.1; density = 1000 kg/m³
Phantom Section: Flat; Space: 10.00 mm

Test Date: 07/14/2022; Ambient Temp: 21.9°C; Tissue Temp: 21.3°C

Probe: EX3DV4 - SN7660; ConvF:(10.61,10.61,10.61); Calibrated: 2022-05-18
Sensor-Surface: 1.4mm (VMS + 6p)
Electronics: DAE4 Sn1678; Calibrated: 2022-05-10
Phantom: Twin-SAM V5.0; Serial: 1692rightback
Measurement SW: DASYS Module SAR V16.0.2.136

Mode: UMTS 850, Body SAR, Back Side, Mid Ch.

Area Scan (120.0 x 210.0): Measurement grid: dx=15.0 mm, dy=15.0 mm

Zoom Scan (30.0 x 30.0 x 30.0): Measurement grid: dx=6.0 mm, dy=6.0 mm, dz=1.5 mm; Graded Ratio: 1.5

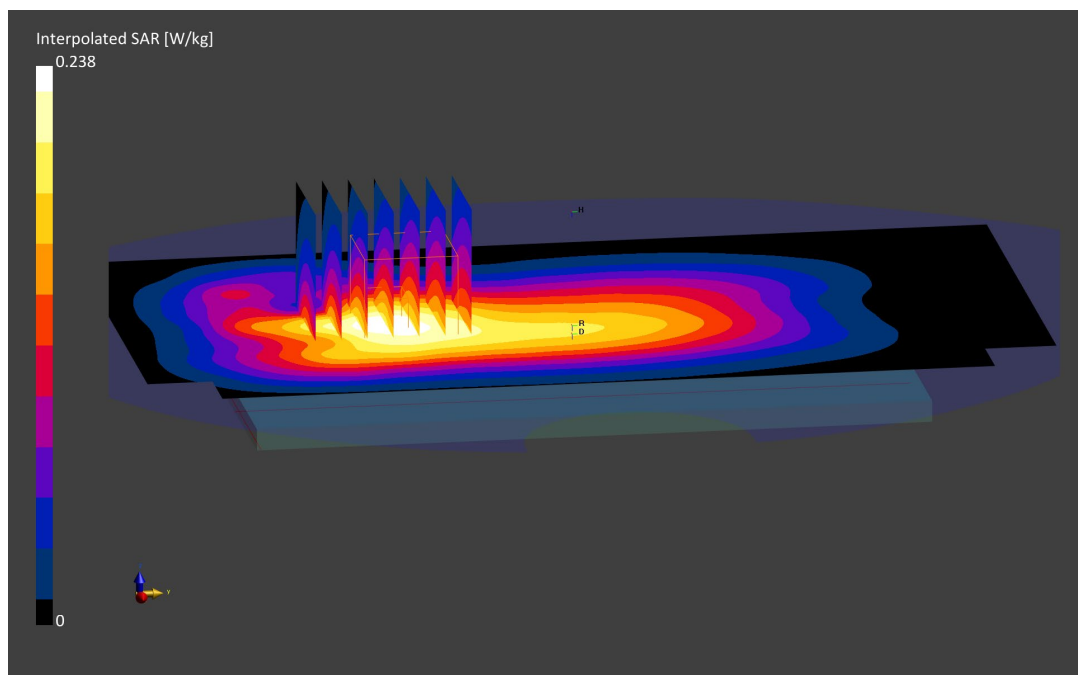
Reference Value = 0.01 W/kg; Power Drift = -0.01 dB

Peak SAR (extrapolated) = 0.238 W/kg

SAR(1 g) = 0.176 W/kg

Smallest distance from peaks to all points 3 dB below is 16.1 mm

Ratio of SAR at M2 to SAR at M1 = 90.4 %



ELEMENT

DUT: PY7-58692W; Type: Portable Handset; Serial: 99948

Communication System: UID:10011 - CAB, WCDMA; MAIA: Y; Frequency: 1752.6 MHz

Medium: 1750 Body; Medium parameters used:

f = 1752.6 MHz; cond = 1.54 S/m; perm = 51.3; density = 1000 kg/m³

Phantom Section: Flat; Space: 10.00 mm

Test Date: 07/11/2022; Ambient Temp: 20.5°C; Tissue Temp: 20.1°C

Probe: EX3DV4 - SN7660; ConvF:(9.22,9.22,9.22); Calibrated: 2022-05-18

Sensor-Surface: 1.4mm (VMS + 6p)

Electronics: DAE4 Sn1678; Calibrated: 2022-05-10

Phantom: Twin-SAM V5.0; Serial: 1692rightback

Measurement SW: DASY Module SAR V16.0.2.136

Mode: UMTS 1750, Body SAR. Back Side, High Ch.

Area Scan (120.0 x 210.0): Measurement grid: dx=15.0 mm, dy=15.0 mm

Zoom Scan (30.0 x 30.0 x 30.0): Measurement grid: dx=6.0 mm, dy=6.0 mm, dz=1.5 mm; Graded Ratio: 1.5

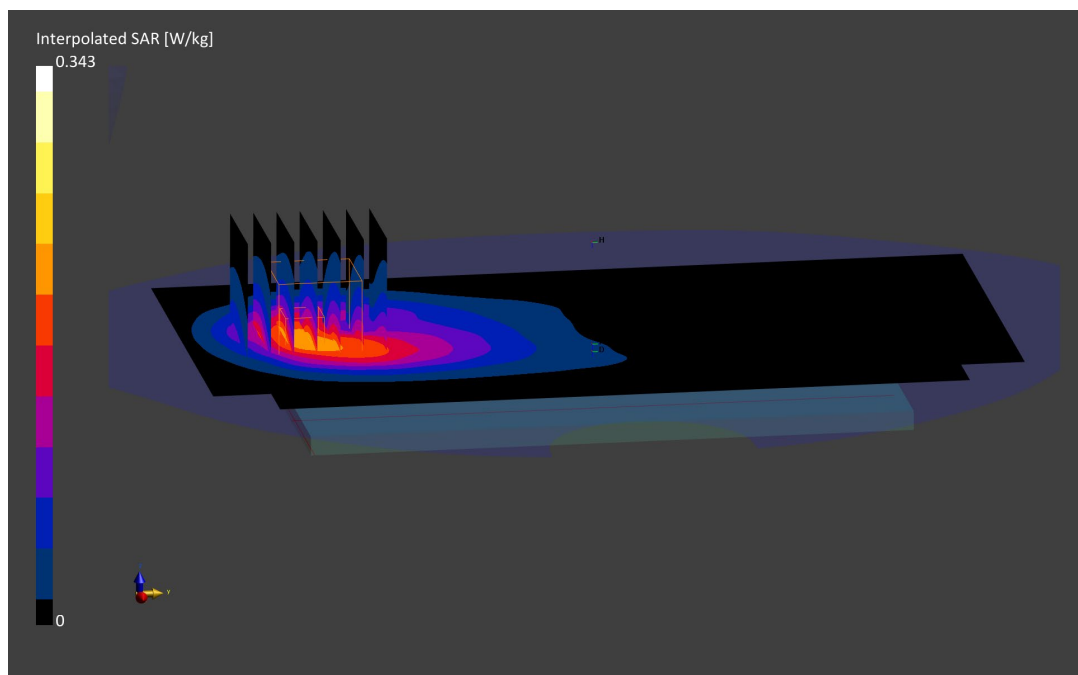
Reference Value = 0.16 W/kg; Power Drift = 0.00 dB

Peak SAR (extrapolated) = 0.343 W/kg

SAR(1 g) = 0.198 W/kg

Smallest distance from peaks to all points 3 dB below is 11.8 mm

Ratio of SAR at M2 to SAR at M1 = 83.4 %



ELEMENT

DUT: PY7-58692W; Type: Portable Handset; Serial: 99948

Communication System: UID:10011 - CAB, WCDMA; MAIA: Y; Frequency: 1852.4 MHz

Medium: 1900 Body; Medium parameters used:

f = 1852.4 MHz; cond = 1.53 S/m; perm = 51.2; density = 1000 kg/m³

Phantom Section: Flat; Space: 10.00 mm

Test Date: 06/27/2022; Ambient Temp: 21.5°C; Tissue Temp: 21.3°C

Probe: EX3DV4 - SN7538; ConvF:(8.28,8.28,8.28); Calibrated: 2021-11-16

Sensor-Surface: 1.4mm (VMS + 6p)

Electronics: DAE4 Sn1323; Calibrated: 2021-11-10

Phantom: Twin-SAM V8.0; Serial: 2056

Measurement SW: DASY Module SAR V16.0.2.136

Mode: UMTS 1900, Body SAR, Back Side, Low Ch.

Area Scan (120.0 x 210.0): Measurement grid: dx=15.0 mm, dy=15.0 mm

Zoom Scan (30.0 x 30.0 x 30.0): Measurement grid: dx=6.0 mm, dy=6.0 mm, dz=1.5 mm; Graded Ratio: 1.5

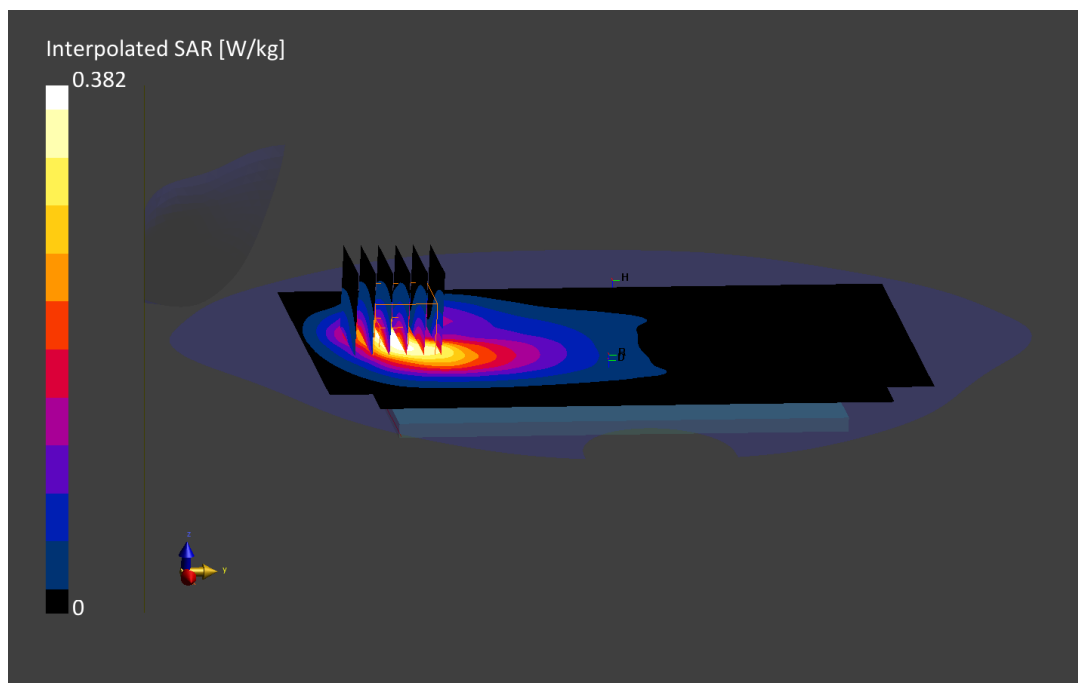
Reference Value = 0.23 W/kg; Power Drift = -0.05 dB

Peak SAR (extrapolated) = 0.382 W/kg

SAR(1 g) = 0.217 W/kg

Smallest distance from peaks to all points 3 dB below is 10.2 mm

Ratio of SAR at M2 to SAR at M1 = 83.1 %



ELEMENT

DUT: PY7-58692W; Type: Portable Handset; Serial: 00043

Communication System: UID:10175 - CAG, LTE-FDD; MAIA: Y; Frequency: 707.5 MHz
Medium: 750 Body; Medium parameters used:
f = 707.5 MHz; cond = 0.921 S/m; perm = 56.6; density = 1000 kg/m3
Phantom Section: Flat; Space: 10.00 mm

Test Date: 07/13/2022; Ambient Temp: 20.9°C; Tissue Temp: 20.5°C

Probe: EX3DV4 - SN7670; ConvF:(9.98,9.98,9.98); Calibrated: 2021-08-05
Sensor-Surface: 1.4mm (VMS + 6p)
Electronics: DAE4 Sn1681; Calibrated: 2021-08-03
Phantom: Twin-SAM V8.0; Serial: 1966
Measurement SW: DASYS Module SAR V16.0.2.136

**Mode: LTE Band 12, Body SAR, Back Side, Mid Ch.,
10 MHz Bandwidth, QPSK, 1 RB, 49 RB Offset**

Area Scan (120.0 x 210.0): Measurement grid: dx=15.0 mm, dy=15.0 mm

Zoom Scan (30.0 x 30.0 x 30.0): Measurement grid: dx=6.0 mm, dy=6.0 mm, dz=1.5 mm; Graded Ratio: 1.5

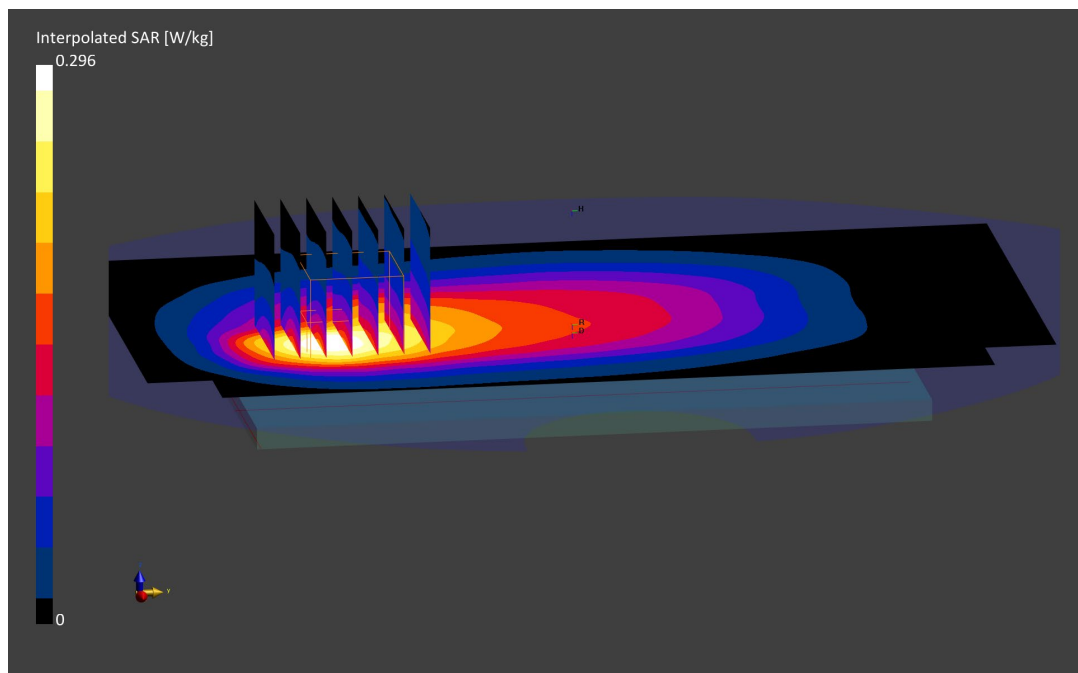
Reference Value = 0.15 W/kg; Power Drift = 0.02 dB

Peak SAR (extrapolated) = 0.296 W/kg

SAR(1 g) = 0.165 W/kg

Smallest distance from peaks to all points 3 dB below is 14.5 mm

Ratio of SAR at M2 to SAR at M1 = 81.2 %



ELEMENT

DUT: PY7-58692W; Type: Portable Handset; Serial: 00043

Communication System: UID:10154 - CAG, LTE-FDD; MAIA: Y; Frequency: 782.0 MHz
Medium: 750 Body; Medium parameters used:
f = 782.0 MHz; cond = 0.947 S/m; perm = 56.5; density = 1000 kg/m3
Phantom Section: Flat; Space: 10.00 mm

Test Date: 07/13/2022; Ambient Temp: 20.9°C; Tissue Temp: 20.5°C

Probe: EX3DV4 - SN7670; ConvF:(9.98,9.98,9.98); Calibrated: 2021-08-05
Sensor-Surface: 1.4mm (VMS + 6p)
Electronics: DAE4 Sn1681; Calibrated: 2021-08-03
Phantom: Twin-SAM V8.0; Serial: 1966
Measurement SW: DASYS Module SAR V16.0.2.136

**Mode: LTE Band 13, Body SAR, Back side, Mid Ch.,
10 MHz Bandwidth, QPSK, 25 RB, 12 RB Offset**

Area Scan (120.0 x 210.0): Measurement grid: dx=15.0 mm, dy=15.0 mm

Zoom Scan (30.0 x 30.0 x 30.0): Measurement grid: dx=6.0 mm, dy=6.0 mm, dz=1.5 mm; Graded Ratio: 1.5

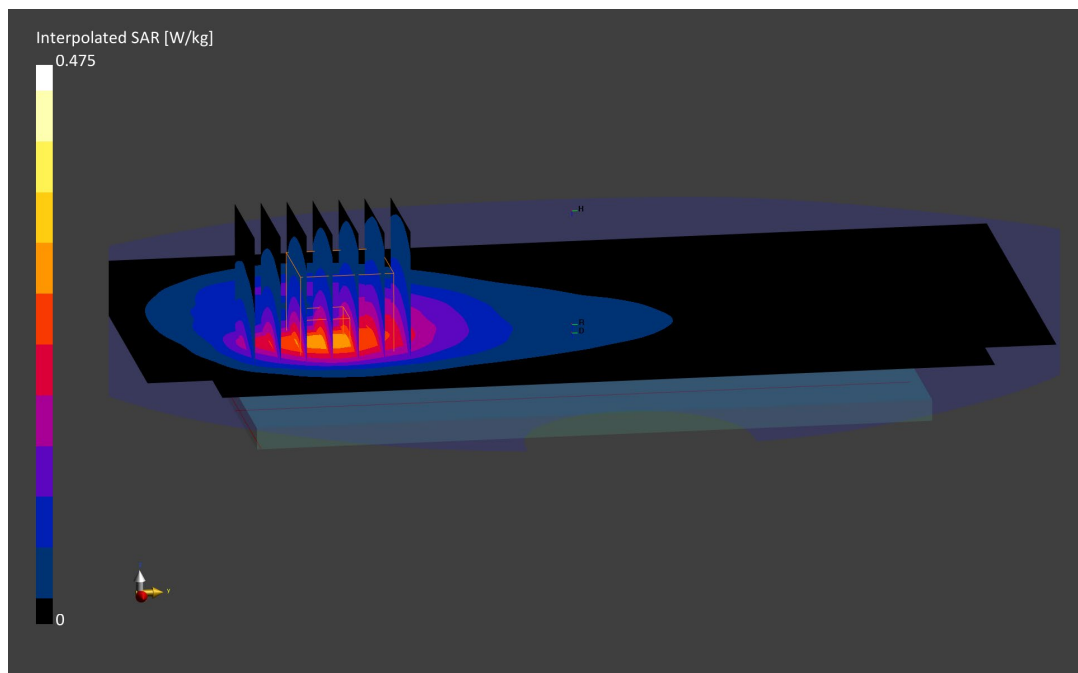
Reference Value = 0.25 W/kg; Power Drift = -0.03 dB

Peak SAR (extrapolated) = 0.475 W/kg

SAR(1 g) = 0.270 W/kg

Smallest distance from peaks to all points 3 dB below is 14.0 mm

Ratio of SAR at M2 to SAR at M1 = 82.7 %



ELEMENT

DUT: PY7-58692W; Type: Portable Handset; Serial: 99989

Communication System: UID:10154 - CAG, LTE-FDD; MAIA: Y; Frequency: 836.5 MHz

Medium: 835 Body; Medium parameters used:

f = 836.5 MHz; cond = 0.948 S/m; perm = 55.1; density = 1000 kg/m³

Phantom Section: Flat; Space: 10.00 mm

Test Date: 07/14/2022; Ambient Temp: 21.9°C; Tissue Temp: 21.3°C

Probe: EX3DV4 - SN7660; ConvF:(10.61,10.61,10.61); Calibrated: 2022-05-18

Sensor-Surface: 1.4mm (VMS + 6p)

Electronics: DAE4 Sn1678; Calibrated: 2022-05-10

Phantom: Twin-SAM V5.0; Serial: 1692rightback

Measurement SW: DASY Module SAR V16.0.2.136

**Mode: LTE Band 5, Body SAR, Back Side, Mid Ch.,
10 MHz Bandwidth, QPSK, 25 RB, 25 RB Offset**

Area Scan (120.0 x 210.0): Measurement grid: dx=15.0 mm, dy=15.0 mm

Zoom Scan (30.0 x 30.0 x 30.0): Measurement grid: dx=6.0 mm, dy=6.0 mm, dz=1.5 mm; Graded Ratio: 1.5

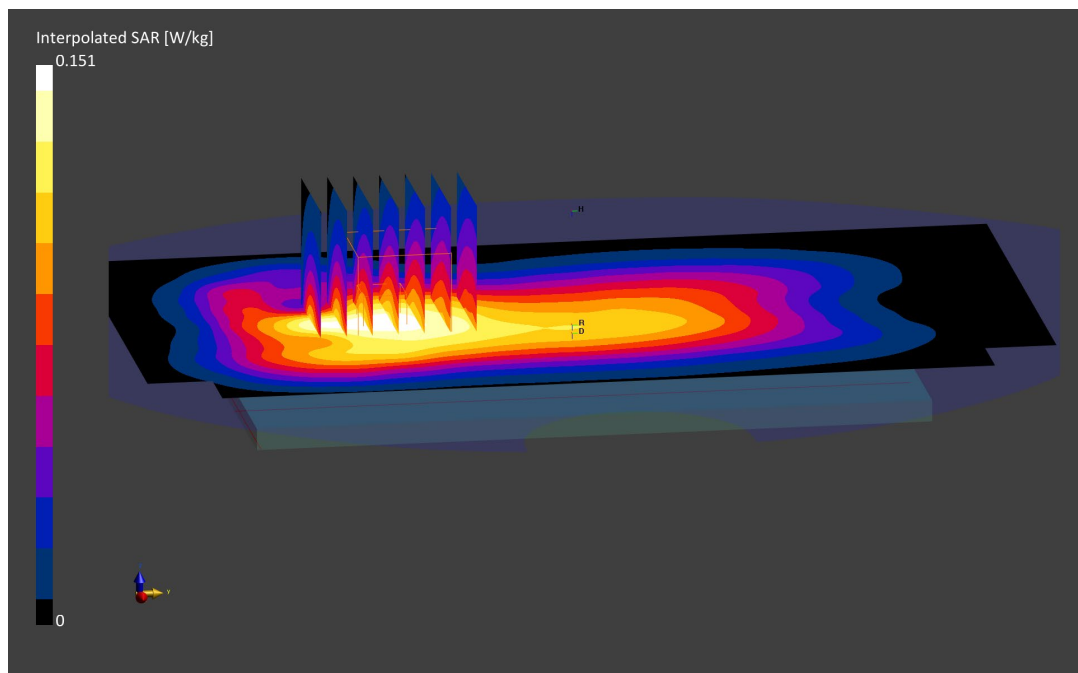
Reference Value = 0.10 W/kg; Power Drift = -0.01 dB

Peak SAR (extrapolated) = 0.151 W/kg

SAR(1 g) = 0.110 W/kg

Smallest distance from peaks to all points 3 dB below is 14.0 mm

Ratio of SAR at M2 to SAR at M1 = 90.4 %



ELEMENT

DUT: PY7-58692W; Type: Portable Handset; Serial: 00043

Communication System: UID:10169 - CAE, LTE-FDD; MAIA: Y; Frequency: 1720.0 MHz
Medium: 1750 Body; Medium parameters used:
f = 1720.0 MHz; cond = 1.49 S/m; perm = 51.4; density = 1000 kg/m3
Phantom Section: Flat; Space: 10.00 mm

Test Date: 07/07/2022; Ambient Temp: 21.6°C; Tissue Temp: 21.3°C

Probe: EX3DV4 - SN7660; ConvF:(9.22,9.22,9.22); Calibrated: 2022-05-18
Sensor-Surface: 1.4mm (VMS + 6p)
Electronics: DAE4 Sn1678; Calibrated: 2022-05-10
Phantom: Twin-SAM V5.0; Serial: 1692rightback
Measurement SW: DASY Module SAR V16.0.2.136

**Mode: LTE Band 66 (AWS), Body SAR, Back Side, Low Ch.,
20 MHz Bandwidth, QPSK, 1 RB, 50 RB Offset**

Area Scan (120.0 x 210.0): Measurement grid: dx=15.0 mm, dy=15.0 mm

Zoom Scan (30.0 x 30.0 x 30.0): Measurement grid: dx=6.0 mm, dy=6.0 mm, dz=1.5 mm; Graded Ratio: 1.5

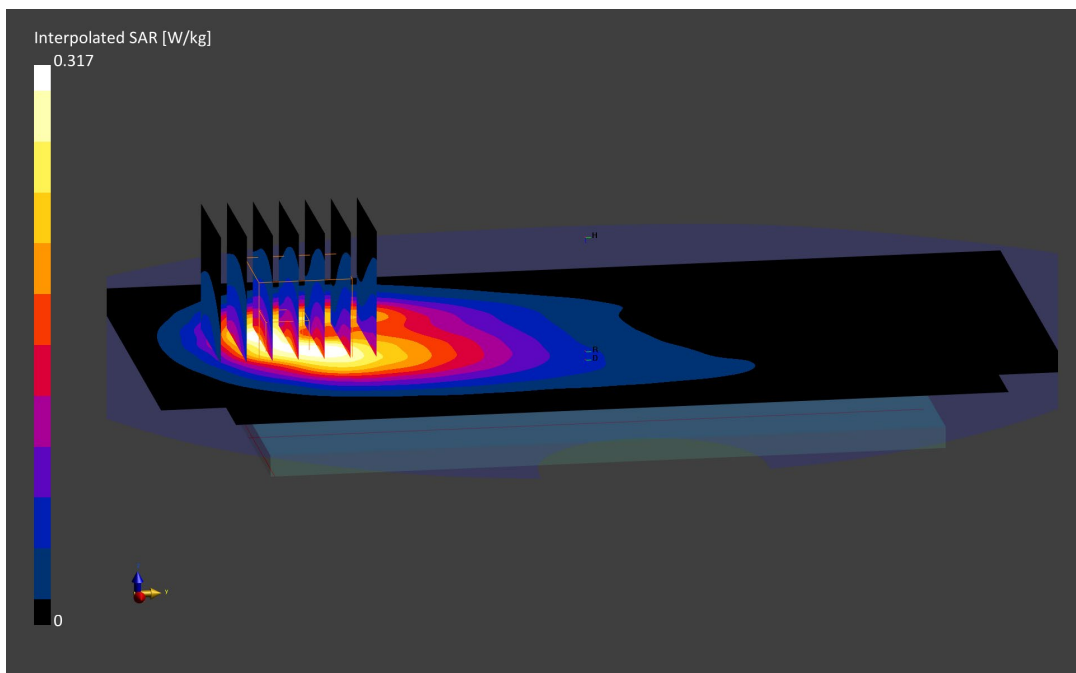
Reference Value = 0.14 W/kg; Power Drift = 0.14 dB

Peak SAR (extrapolated) = 0.316 W/kg

SAR(1 g) = 0.181 W/kg

Smallest distance from peaks to all points 3 dB below is 11.8 mm

Ratio of SAR at M2 to SAR at M1 = 83.1 %



ELEMENT

DUT: PY7-58692W; Type: Portable Handset; Serial: 99989

Communication System: UID:10169 - CAE, LTE-FDD; MAIA: Y; Frequency: 1905.0 MHz

Medium: 1900 Body; Medium parameters used:

f = 1905.0 MHz; cond = 1.59 S/m; perm = 51.3; density = 1000 kg/m³

Phantom Section: Flat; Space: 10.00 mm

Test Date: 07/20/2022; Ambient Temp: 25.0°C; Tissue Temp: 22.9°C

Probe: EX3DV4 - SN7417; ConvF:(7.92,7.92,7.92); Calibrated: 2022-02-22

Sensor-Surface: 1.4mm (VMS + 6p)

Electronics: DAE4 Sn665; Calibrated: 2022-02-22

Phantom: Twin-SAM V8.0; Serial: 2060

Measurement SW: DASY Module SAR V16.0.2.83

**Mode: LTE Band 25, Body SAR, Back side, High Ch.,
20 MHz Bandwidth, QPSK, 1 RB, 0 RB Offset**

Area Scan (120.0 x 210.0): Measurement grid: dx=15.0 mm, dy=15.0 mm

Zoom Scan (30.0 x 30.0 x 30.0): Measurement grid: dx=6.0 mm, dy=6.0 mm, dz=1.5 mm; Graded Ratio: 1.5

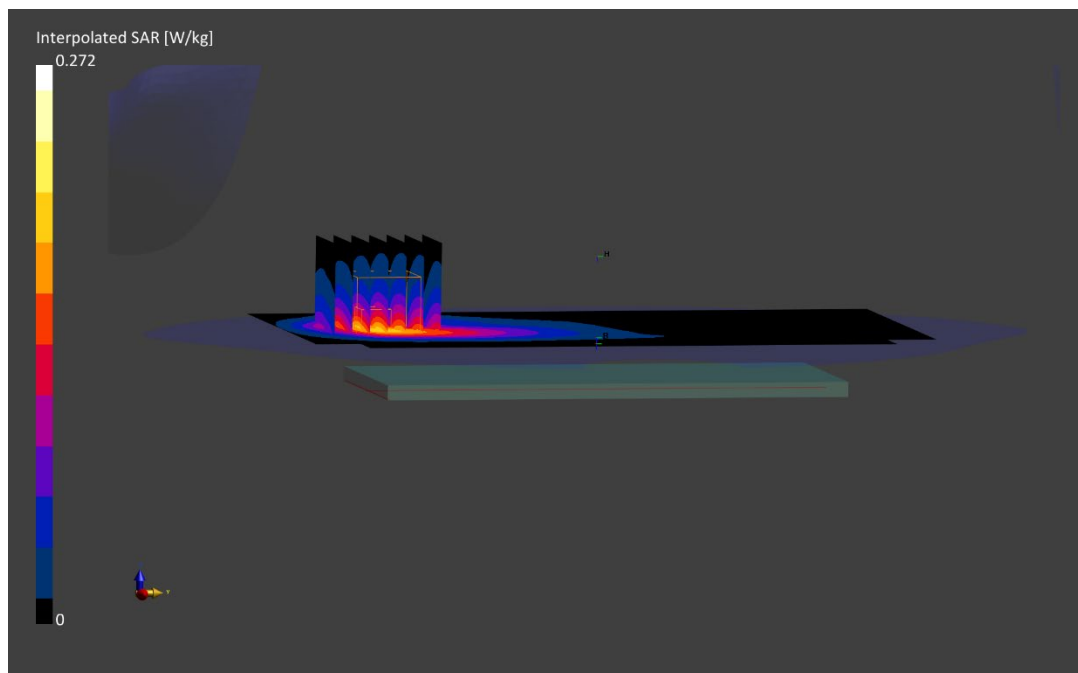
Reference Value = 0.19 W/kg; Power Drift = 0.01 dB

Peak SAR (extrapolated) = 0.272 W/kg

SAR(1 g) = 0.168 W/kg

Smallest distance from peaks to all points 3 dB below is 12.5 mm

Ratio of SAR at M2 to SAR at M1 = 85.6 %



ELEMENT

DUT: PY7-58692W; Type: Portable Handset; Serial: 99989

Communication System: UID:10494 - AAF, LTE-TDD; MAIA: Y; Frequency: 2593.0 MHz

Medium: 2450 Body; Medium parameters used:

f = 2593.0 MHz; cond = 2.10 S/m; perm = 50.4; density = 1000 kg/m³

Phantom Section: Flat; Space: 10.00 mm

Test Date: 06/28/2022; Ambient Temp: 21.3°C; Tissue Temp: 24.0°C

Probe: EX3DV4 - SN7552; ConvF:(7.28,7.28,7.28); Calibrated: 2021-09-20

Sensor-Surface: 1.4mm (VMS + 6p)

Electronics: DAE4 Sn1680; Calibrated: 2021-08-04

Phantom: Twin-SAM V8.0; Serial: 2065

Measurement SW: DASY Module SAR V16.0.2.83

**Mode: LTE Band 41, Body SAR, Back Side, Mid Ch.,
20 MHz Bandwidth, QPSK, 50 RB, 0 RB Offset**

Area Scan (100.0 x 200.0): Measurement grid: dx=10.0 mm, dy=10.0 mm

Zoom Scan (30.0 x 30.0 x 30.0): Measurement grid: dx=5.0 mm, dy=5.0 mm, dz=1.5 mm; Graded Ratio: 1.5

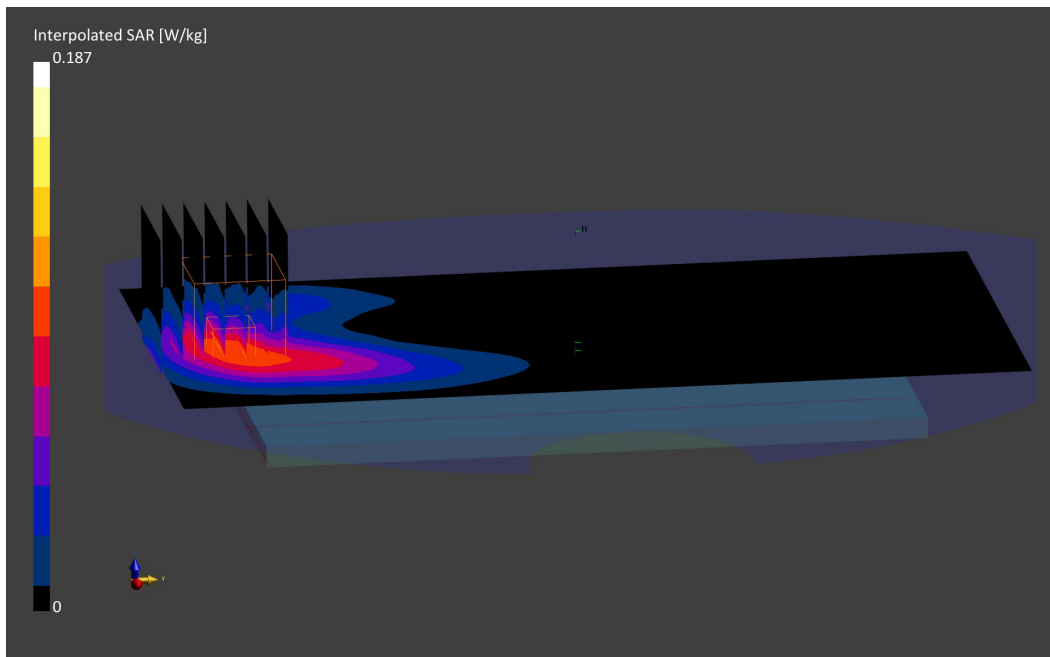
Reference Value = 0.11 W/kg; Power Drift = 0.01 dB

Peak SAR (extrapolated) = 0.187 W/kg

SAR(1 g) = 0.094 W/kg

Smallest distance from peaks to all points 3 dB below is 11.7 mm

Ratio of SAR at M2 to SAR at M1 = 79.8 %



ELEMENT

DUT: PY7-58692W; Type: Portable Handset; Serial: 99583

Communication System: UID:10415 - AAA, WLAN; MAIA: Y; Frequency: 2412.0 MHz

Medium: 2450 Body; Medium parameters used:

f = 2412.0 MHz; cond = 1.95 S/m; perm = 51.3; density = 1000 kg/m³

Phantom Section: Flat; Space: 10.00 mm

Test Date: 07/12/2022; Ambient Temp: 21.5°C; Tissue Temp: 21.2°C

Probe: EX3DV4 - SN7552; ConvF:(7.44,7.44,7.44); Calibrated: 2021-09-20

Sensor-Surface: 1.4mm (VMS + 6p)

Electronics: DAE4 Sn1680; Calibrated: 2021-08-04

Phantom: Twin-SAM V8.0; Serial: 2065

Measurement SW: DASY Module SAR V16.0.2.83

**Mode: IEEE 802.11b, 22 MHz Bandwidth, Chain 0, Body SAR
Back Side, Ch. 1, 1 Mbps**

Area Scan (100.0 x 200.0): Measurement grid: dx=10.0 mm, dy=10.0 mm

Zoom Scan (30.0 x 30.0 x 30.0): Measurement grid: dx=5.0 mm, dy=5.0 mm, dz=1.5 mm; Graded Ratio: 1.5

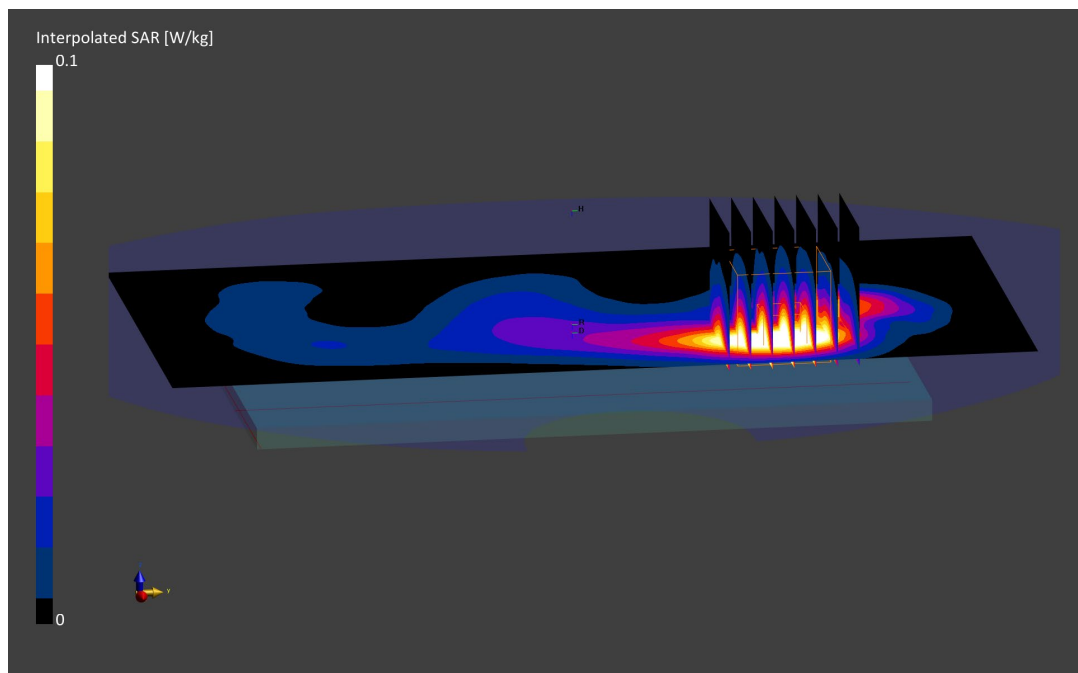
Reference Value = 0.14 W/kg; Power Drift = -0.01 dB

Peak SAR (extrapolated) = 0.236 W/kg

SAR(1 g) = 0.111 W/kg

Smallest distance from peaks to all points 3 dB below is 8.2 mm

Ratio of SAR at M2 to SAR at M1 = 78.6 %



ELEMENT

DUT: PY7-58692W; Type: Portable Handset; Serial: 99823

Communication System: UID:10544 - AAC, WLAN; MAIA: Y; Frequency: 5775.0 MHz
Medium: 5200-5800 Body; Medium parameters used:
f = 5775.0 MHz; cond = 6.20 S/m; perm = 47.4; density = 1000 kg/m³
Phantom Section: Flat; Space: 10.00 mm

Test Date: 07/05/2022; Ambient Temp: 22.1°C; Tissue Temp: 20.8°C

Probe: EX3DV4 - SN7417; ConvF:(4.43,4.43,4.43); Calibrated: 2022-02-22
Sensor-Surface: 1.4mm (VMS + 6p)
Electronics: DAE4 Sn665; Calibrated: 2022-02-22
Phantom: Twin-SAM V8.0; Serial: 2060
Measurement SW: DASY Module SAR V16.0.2.83

**Mode: IEEE 802.11ac, 80 MHz Bandwidth, UNII-3, Chain 1,
Ch. 155, Body SAR, Back Side, 29.3 Mbps**

Area Scan (100.0 x 200.0): Measurement grid: dx=10.0 mm, dy=10.0 mm

Zoom Scan (22.0 x 22.0 x 22.0): Measurement grid: dx=4.0 mm, dy=4.0 mm, dz=1.4 mm; Graded Ratio: 1.4

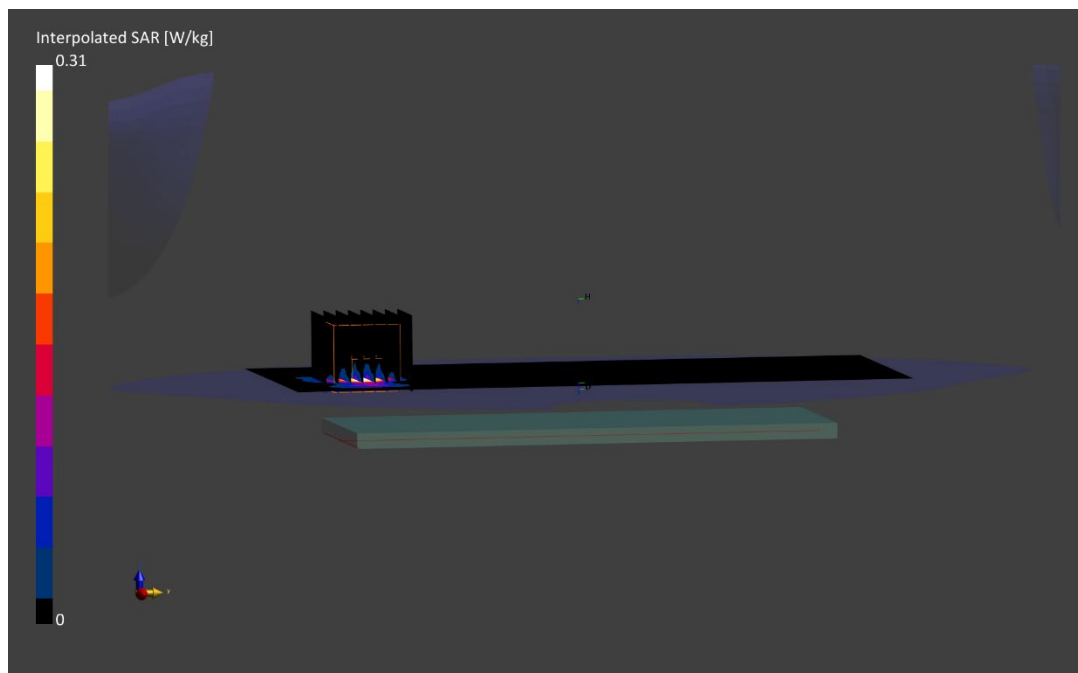
Reference Value = 0.13 W/kg; Power Drift = -0.11 dB

Peak SAR (extrapolated) = 0.310 W/kg

SAR(1 g) = 0.078 W/kg

Smallest distance from peaks to all points 3 dB below is 6.6 mm

Ratio of SAR at M2 to SAR at M1 = 62.1 %



ELEMENT

DUT: PY7-58692W; Type: Portable Handset; Serial: 99583

Communication System: UID:10032 - CAA, Bluetooth; MAIA: Y; Frequency: 2480.0 MHz
Medium: 2450 Body; Medium parameters used:
f = 2480.0 MHz; cond = 2.04 S/m; perm = 51.0; density = 1000 kg/m³
Phantom Section: Flat; Space: 10.00 mm

Test Date: 07/12/2022; Ambient Temp: 21.5°C; Tissue Temp: 21.2°C

Probe: EX3DV4 - SN7552; ConvF:(7.44,7.44,7.44); Calibrated: 2021-09-20
Sensor-Surface: 1.4mm (VMS + 6p)
Electronics: DAE4 Sn1680; Calibrated: 2021-08-04
Phantom: Twin-SAM V8.0; Serial: 2065
Measurement SW: DASY Module SAR V16.0.2.83

Mode: Bluetooth, Chain 0, Body SAR, Ch. 78, 1 Mbps, Back Side

Area Scan (100.0 x 200.0): Measurement grid: dx=10.0 mm, dy=10.0 mm

Zoom Scan (30.0 x 30.0 x 30.0): Measurement grid: dx=5.0 mm, dy=5.0 mm, dz=1.5 mm; Graded Ratio: 1.5

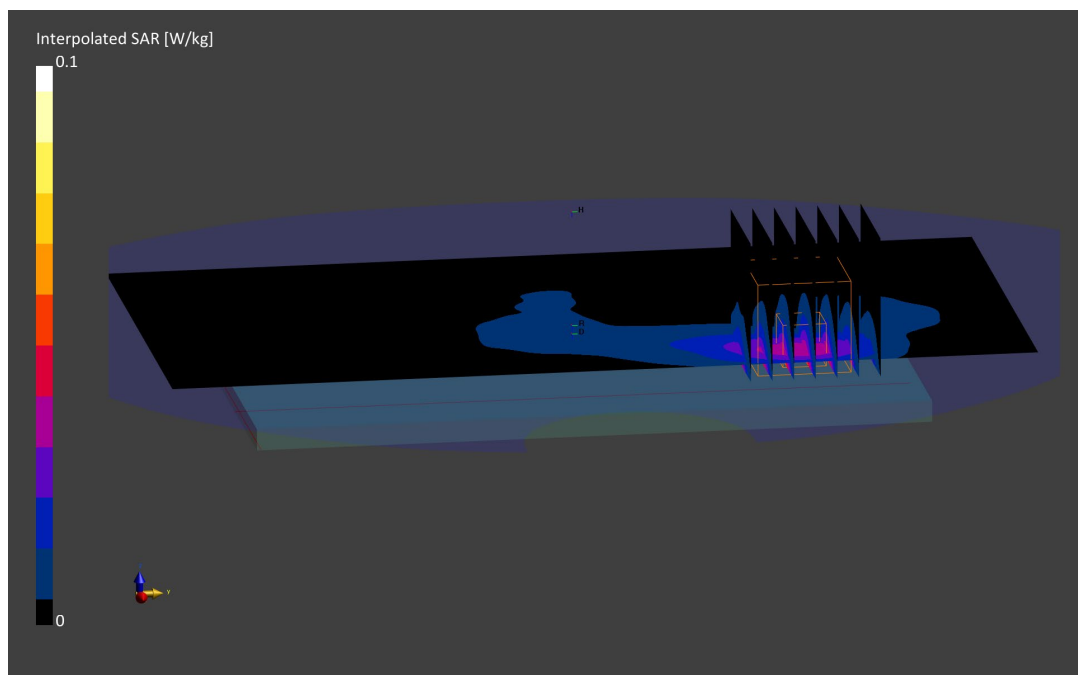
Reference Value = 0.04 W/kg; Power Drift = 0.06 dB

Peak SAR (extrapolated) = 0.065 W/kg

SAR(1 g) = 0.032 W/kg

Smallest distance from peaks to all points 3 dB below is > 15.0 mm

Ratio of SAR at M2 to SAR at M1 = 80.4 %



ELEMENT

DUT: PY7-58692W; Type: Portable Handset; Serial: 99948

Communication System: UID:10027 - DAC, GSM; MAIA: Y; Frequency: 848.8 MHz
 Medium: 835 Body; Medium parameters used:
 $f = 848.8$ MHz; $\text{cond} = 0.961$ S/m; $\text{perm} = 55.0$; $\text{density} = 1000$ kg/m³
 Phantom Section: Flat; Space: 10.00 mm

Test Date: 07/14/2022; Ambient Temp: 21.9°C; Tissue Temp: 21.3°C

Probe: EX3DV4 - SN7660; ConvF:(10.61,10.61,10.61); Calibrated: 2022-05-18
 Sensor-Surface: 1.4mm (VMS + 6p)
 Electronics: DAE4 Sn1678; Calibrated: 2022-05-10
 Phantom: Twin-SAM V5.0; Serial: 1692rightback
 Measurement SW: DASY Module SAR V16.0.2.136

Mode: GPRS 850, DTM, Body SAR, Left Edge, High Ch., 3 Tx Slots

Area Scan (40.0 x 210.0): Measurement grid: $dx=5.0$ mm, $dy=15.0$ mm

Zoom Scan (30.0 x 30.0 x 30.0): Measurement grid: $dx=6.0$ mm, $dy=6.0$ mm, $dz=1.5$ mm; Graded Ratio: 1.5

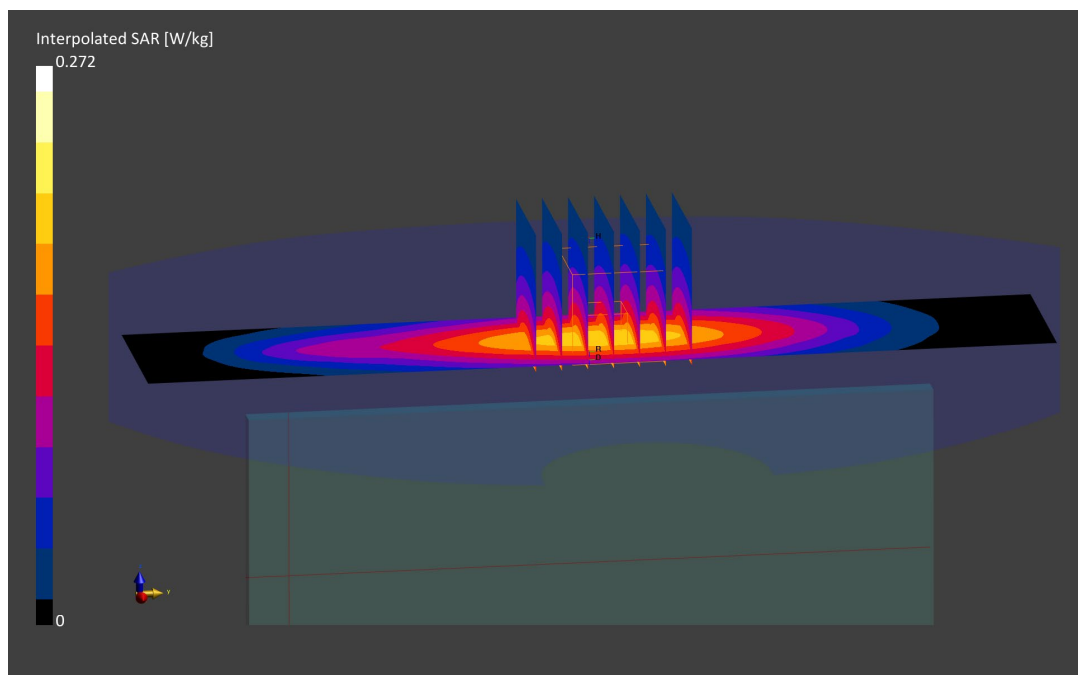
Reference Value = 0.15 W/kg; Power Drift = -0.01 dB

Peak SAR (extrapolated) = 0.272 W/kg

SAR(1 g) = 0.173 W/kg

Smallest distance from peaks to all points 3 dB below is > 15.0 mm

Ratio of SAR at M2 to SAR at M1 = 85.3 %



ELEMENT

DUT: PY7-58692W; Type: Portable Handset; Serial: 99948

Communication System: UID:10028 - DAC, GSM; MAIA: Y; Frequency: 1880.0 MHz

Medium: 1900 Body; Medium parameters used:

f = 1880.0 MHz; cond = 1.54 S/m; perm = 52.0; density = 1000 kg/m³

Phantom Section: Flat; Space: 10.00 mm

Test Date: 07/18/2022; Ambient Temp: 21.3°C; Tissue Temp: 21.1°C

Probe: EX3DV4 - SN7538; ConvF:(8.28,8.28,8.28); Calibrated: 2021-11-16

Sensor-Surface: 1.4mm (VMS + 6p)

Electronics: DAE4 Sn1323; Calibrated: 2021-11-10

Phantom: Twin-SAM V8.0; Serial: 2056

Measurement SW: DASY Module SAR V16.0.2.136

Mode: GPRS 1900, Body SAR, Bottom Edge, Mid Ch., 4 Tx Slots

Area Scan (40.0 x 120.0): Measurement grid: dx=5.0 mm, dy=15.0 mm

Zoom Scan (30.0 x 30.0 x 30.0): Measurement grid: dx=6.0 mm, dy=6.0 mm, dz=1.5 mm; Graded Ratio: 1.5

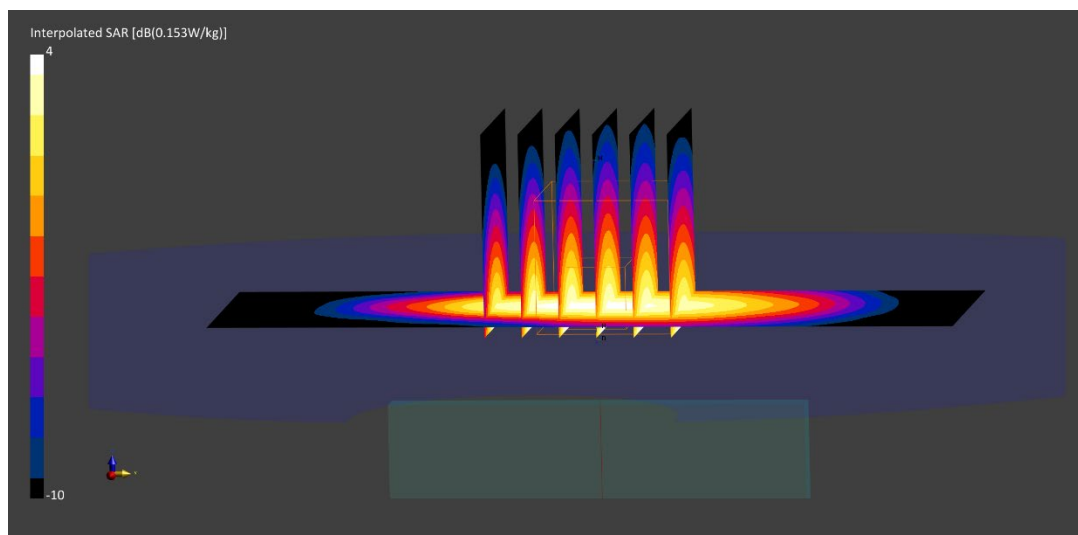
Reference Value = 0.32 W/kg; Power Drift = 0.01 dB

Peak SAR (extrapolated) = 0.470 W/kg

SAR(1 g) = 0.264 W/kg

Smallest distance from peaks to all points 3 dB below is 10.8 mm

Ratio of SAR at M2 to SAR at M1 = 82.2 %



ELEMENT

DUT: PY7-58692W; Type: Portable Handset; Serial: 99948

Communication System: UID:10011 - CAB, WCDMA; MAIA: Y; Frequency: 1752.6 MHz

Medium: 1750 Body; Medium parameters used:

f = 1752.6 MHz; cond = 1.54 S/m; perm = 51.3; density = 1000 kg/m³

Phantom Section: Flat; Space: 10.00 mm

Test Date: 07/11/2022; Ambient Temp: 20.5°C; Tissue Temp: 20.1°C-

Probe: EX3DV4 - SN7660; ConvF:(9.22,9.22,9.22); Calibrated: 2022-05-18

Sensor-Surface: 1.4mm (VMS + 6p)

Electronics: DAE4 Sn1678; Calibrated: 2022-05-10

Phantom: Twin-SAM V5.0; Serial: 1692rightback

Measurement SW: DASY Module SAR V16.0.2.136

Mode: UMTS 1750, Body SAR. Bottom Edge, High Ch.

Area Scan (40.0 x 120.0): Measurement grid: dx=5.0 mm, dy=15.0 mm

Zoom Scan (30.0 x 30.0 x 30.0): Measurement grid: dx=6.0 mm, dy=6.0 mm, dz=1.5 mm; Graded Ratio: 1.5

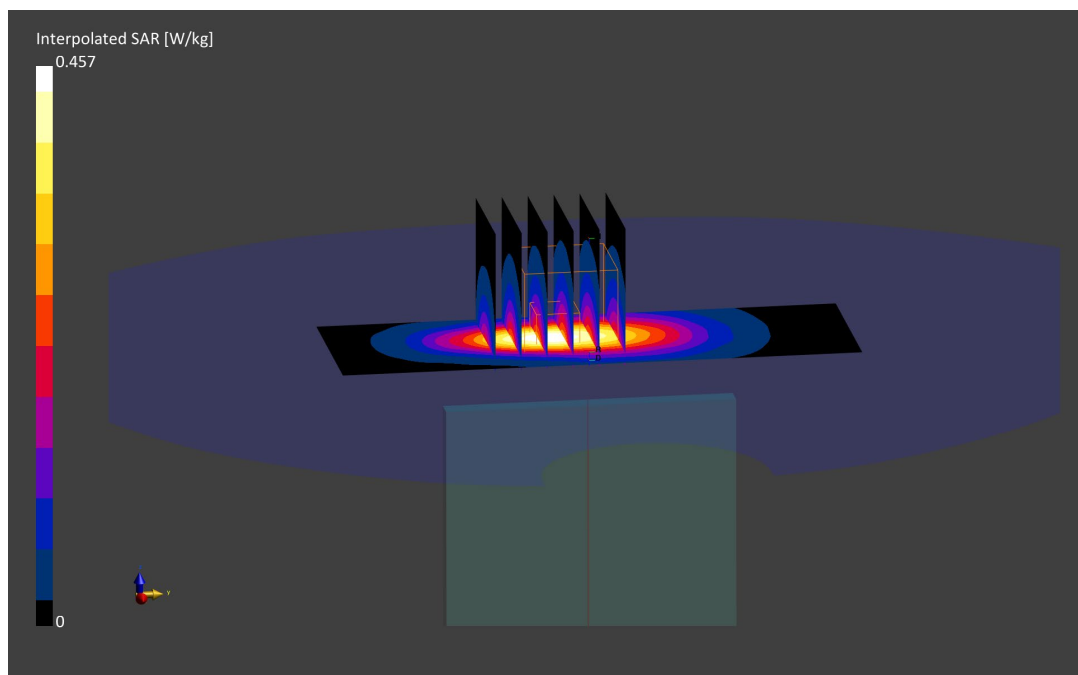
Reference Value = 0.21 W/kg; Power Drift = 0.00 dB

Peak SAR (extrapolated) = 0.457 W/kg

SAR(1 g) = 0.255 W/kg

Smallest distance from peaks to all points 3 dB below is 10.9 mm

Ratio of SAR at M2 to SAR at M1 = 81.9 %



ELEMENT

DUT: PY7-58692W; Type: Portable Handset; Serial: 99948

Communication System: UID:10011 - CAB, WCDMA; MAIA: Y; Frequency: 1852.4 MHz

Medium: 1900 Body; Medium parameters used:

f = 1852.4 MHz; cond = 1.53 S/m; perm = 51.2; density = 1000 kg/m³

Phantom Section: Flat; Space: 10.00 mm

Test Date: 06/27/2022; Ambient Temp: 21.5°C; Tissue Temp: 21.3°C

Probe: EX3DV4 - SN7538; ConvF:(8.28,8.28,8.28); Calibrated: 2021-11-16

Sensor-Surface: 1.4mm (VMS + 6p)

Electronics: DAE4 Sn1323; Calibrated: 2021-11-10

Phantom: Twin-SAM V8.0; Serial: 2056

Measurement SW: DASY Module SAR V16.0.2.83

Mode: UMTS 1900, Body SAR, Bottom Edge, Low Ch.

Area Scan (40.0 x 120.0): Measurement grid: dx=5.0 mm, dy=15.0 mm

Zoom Scan (30.0 x 30.0 x 30.0): Measurement grid: dx=6.0 mm, dy=6.0 mm, dz=1.5 mm; Graded Ratio: 1.5

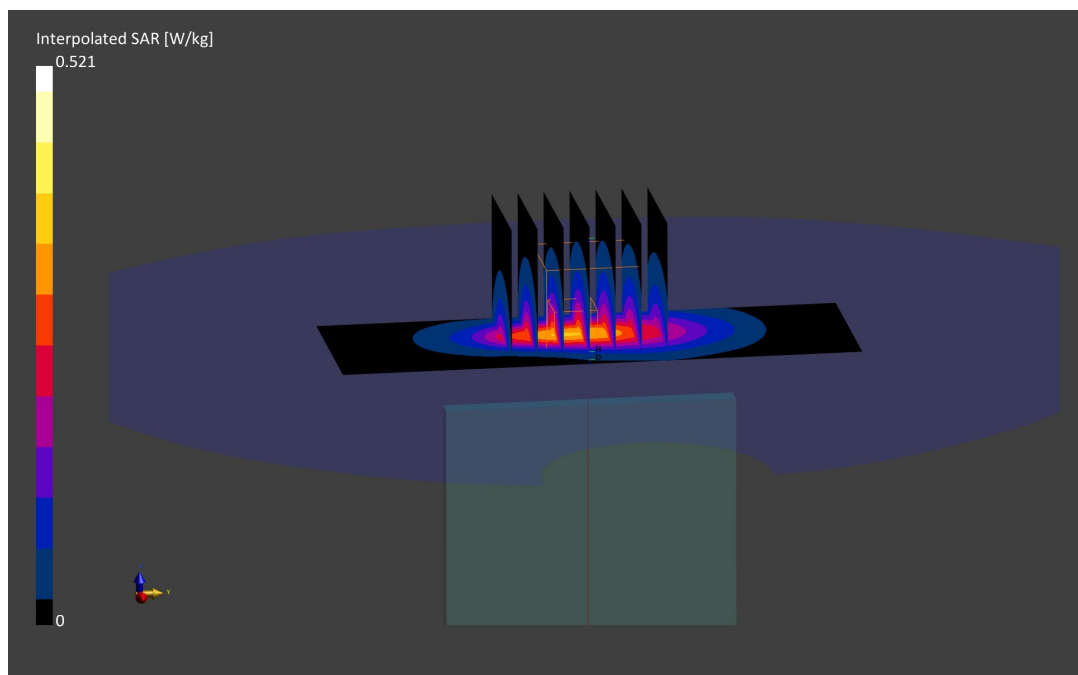
Reference Value = 0.36 W/kg; Power Drift = 0.00 dB

Peak SAR (extrapolated) = 0.521 W/kg

SAR(1 g) = 0.289 W/kg

Smallest distance from peaks to all points 3 dB below is 9.6 mm

Ratio of SAR at M2 to SAR at M1 = 82.3 %



ELEMENT

DUT: PY7-58692W; Type: Portable Handset; Serial: 00043

Communication System: UID:10169 - CAE, LTE-FDD; MAIA: Y; Frequency: 1720.0 MHz

Medium: 1750 Body; Medium parameters used:

f = 1720.0 MHz; cond = 1.49 S/m; perm = 51.4; density = 1000 kg/m³

Phantom Section: Flat; Space: 10.00 mm

Test Date: 07/07/2022; Ambient Temp: 21.6°C; Tissue Temp: 21.3°C

Probe: EX3DV4 - SN7660; ConvF:(9.22,9.22,9.22); Calibrated: 2022-05-18

Sensor-Surface: 1.4mm (VMS + 6p)

Electronics: DAE4 Sn1678; Calibrated: 2022-05-10

Phantom: Twin-SAM V5.0; Serial: 1692rightback

Measurement SW: DASYS Module SAR V16.0.2.136

**Mode: LTE Band 66 (AWS), Body SAR, Bottom Edge, Low Ch.,
20 MHz Bandwidth, QPSK, 1 RB, 50 RB Offset**

Area Scan (40.0 x 120.0): Measurement grid: dx=5.0 mm, dy=15.0 mm

Zoom Scan (30.0 x 30.0 x 30.0): Measurement grid: dx=6.0 mm, dy=6.0 mm, dz=1.5 mm; Graded Ratio: 1.5

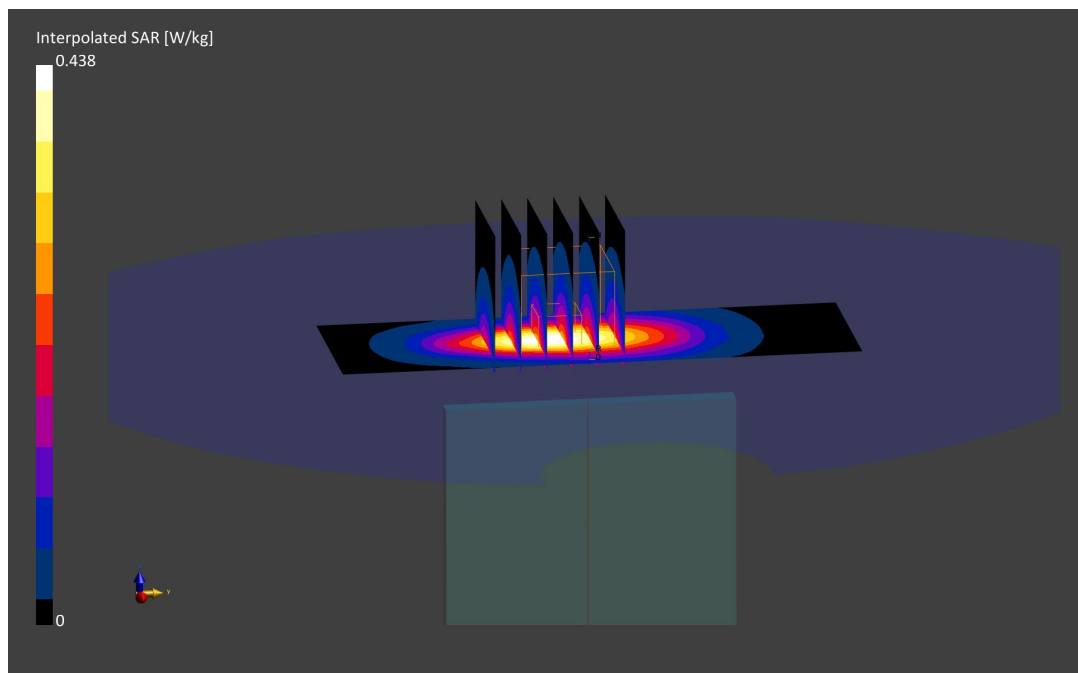
Reference Value = 0.19 W/kg; Power Drift = 0.18 dB

Peak SAR (extrapolated) = 0.438 W/kg

SAR(1 g) = 0.246 W/kg

Smallest distance from peaks to all points 3 dB below is 10.8 mm

Ratio of SAR at M2 to SAR at M1 = 82.4 %



ELEMENT

DUT: PY7-58692W; Type: Portable Handset; Serial: 99989

Communication System: UID:10169 - CAE, LTE-FDD; MAIA: Y; Frequency: 1905.0 MHz

Medium: 1900 Body; Medium parameters used:

f = 1905.0 MHz; cond = 1.59 S/m; perm = 51.3; density = 1000 kg/m³

Phantom Section: Flat; Space: 10.00 mm

Test Date: 07/20/2022; Ambient Temp: 25.0°C; Tissue Temp: 22.9°C

Probe: EX3DV4 - SN7417; ConvF:(7.92,7.92,7.92); Calibrated: 2022-02-22

Sensor-Surface: 1.4mm (VMS + 6p)

Electronics: DAE4 Sn665; Calibrated: 2022-02-22

Phantom: Twin-SAM V8.0; Serial: 2060

Measurement SW: DASY Module SAR V16.0.2.83

**Mode: LTE Band 25, Body SAR, Bottom Edge, High Ch.,
20 MHz Bandwidth, QPSK, 1 RB, 0 RB Offset**

Area Scan (40.0 x 120.0): Measurement grid: dx=5.0 mm, dy=15.0 mm

Zoom Scan (30.0 x 30.0 x 30.0): Measurement grid: dx=6.0 mm, dy=6.0 mm, dz=1.5 mm; Graded Ratio: 1.5

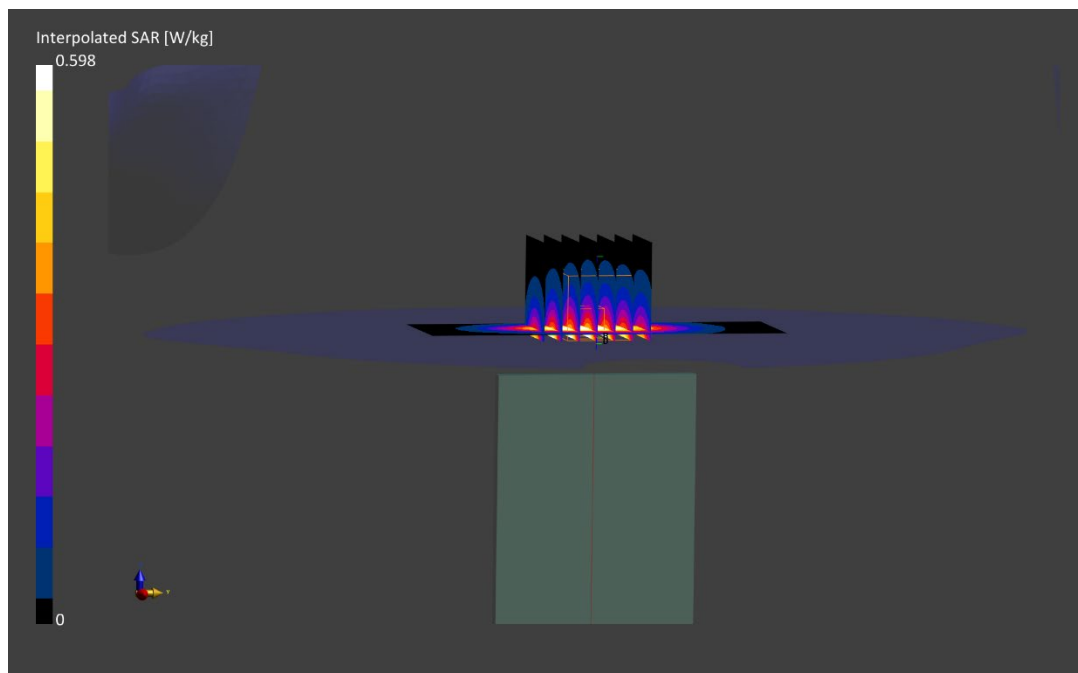
Reference Value = 0.43 W/kg; Power Drift = 0.02 dB

Peak SAR (extrapolated) = 0.598 W/kg

SAR(1 g) = 0.344 W/kg

Smallest distance from peaks to all points 3 dB below is 11.8 mm

Ratio of SAR at M2 to SAR at M1 = 83.0 %



ELEMENT

DUT: PY7-58692W; Type: Portable Handset; Serial: 99989

Communication System: UID:10435 - AAF, LTE-TDD; MAIA: Y; Frequency: 2593.0 MHz

Medium: 2450 Body; Medium parameters used:

f = 2593.0 MHz; cond = 2.10 S/m; perm = 50.4; density = 1000 kg/m³

Phantom Section: Flat; Space: 10.00 mm

Test Date: 06/28/2022; Ambient Temp: 21.3°C; Tissue Temp: 24.0°C

Probe: EX3DV4 - SN7552; ConvF:(7.28,7.28,7.28); Calibrated: 2021-09-20

Sensor-Surface: 1.4mm (VMS + 6p)

Electronics: DAE4 Sn1680; Calibrated: 2021-08-04

Phantom: Twin-SAM V8.0; Serial: 2065

Measurement SW: DASY Module SAR V16.0.2.83

**Mode: LTE Band 41, Body SAR, Bottom Edge, Mid Ch.,
20 MHz Bandwidth, QPSK, 1 RB, 0 RB Offset**

Area Scan (40.0 x 100.0): Measurement grid: dx=5.0 mm, dy=10.0 mm

Zoom Scan (30.0 x 30.0 x 30.0): Measurement grid: dx=5.0 mm, dy=5.0 mm, dz=1.5 mm; Graded Ratio: 1.5

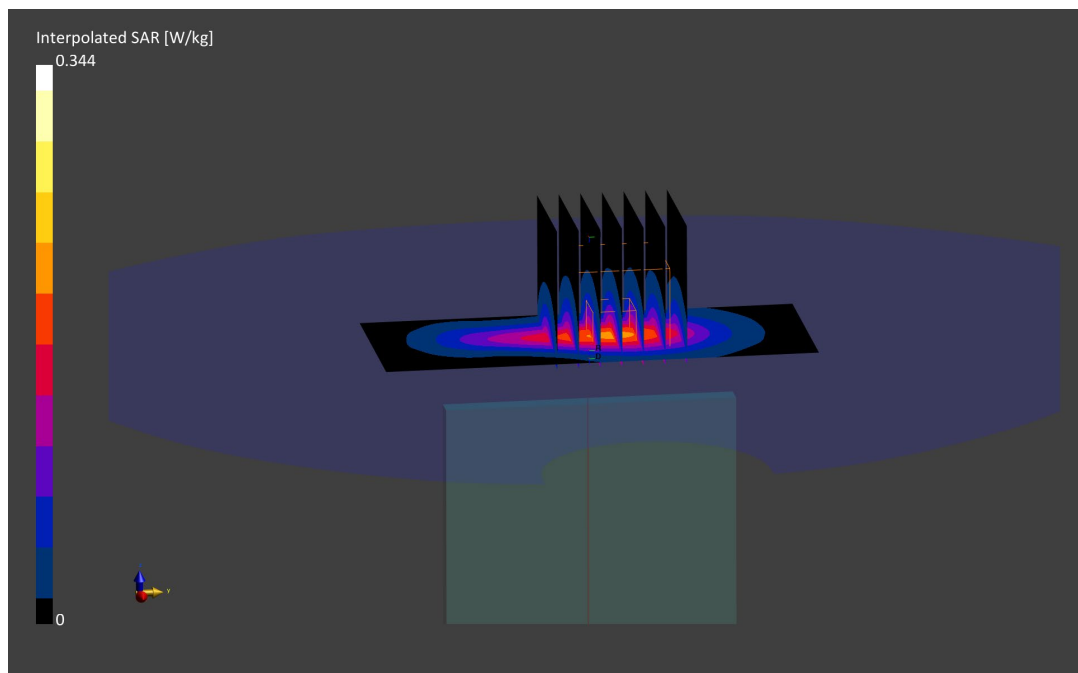
Reference Value = 0.20 W/kg; Power Drift = 0.02 dB

Peak SAR (extrapolated) = 0.344 W/kg

SAR(1 g) = 0.165 W/kg

Smallest distance from peaks to all points 3 dB below is 11.7 mm

Ratio of SAR at M2 to SAR at M1 = 77.0 %



ELEMENT

DUT: PY7-58692W; Type: Portable Handset; Serial: 99583

Communication System: UID:10415 - AAA, WLAN; MAIA: Y; Frequency: 2412.0 MHz

Medium: 2450 Body; Medium parameters used:

f = 2412.0 MHz; cond = 1.95 S/m; perm = 51.3; density = 1000 kg/m³

Phantom Section: Flat; Space: 10.00 mm

Test Date: 07/12/2022; Ambient Temp: 21.5°C; Tissue Temp: 21.2°C

Probe: EX3DV4 - SN7552; ConvF:(7.44,7.44,7.44); Calibrated: 2021-09-20

Sensor-Surface: 1.4mm (VMS + 6p)

Electronics: DAE4 Sn1680; Calibrated: 2021-08-04

Phantom: Twin-SAM V8.0; Serial: 2065

Measurement SW: DASY Module SAR V16.0.2.83

Mode: IEEE 802.11b, 22 MHz Bandwidth, Chain 0
Body SAR, Left Edge, Ch. 1, 1 Mbps

Area Scan (40.0 x 200.0): Measurement grid: dx=5.0 mm, dy=10.0 mm

Zoom Scan (30.0 x 30.0 x 30.0): Measurement grid: dx=5.0 mm, dy=5.0 mm, dz=1.5 mm; Graded Ratio: 1.5

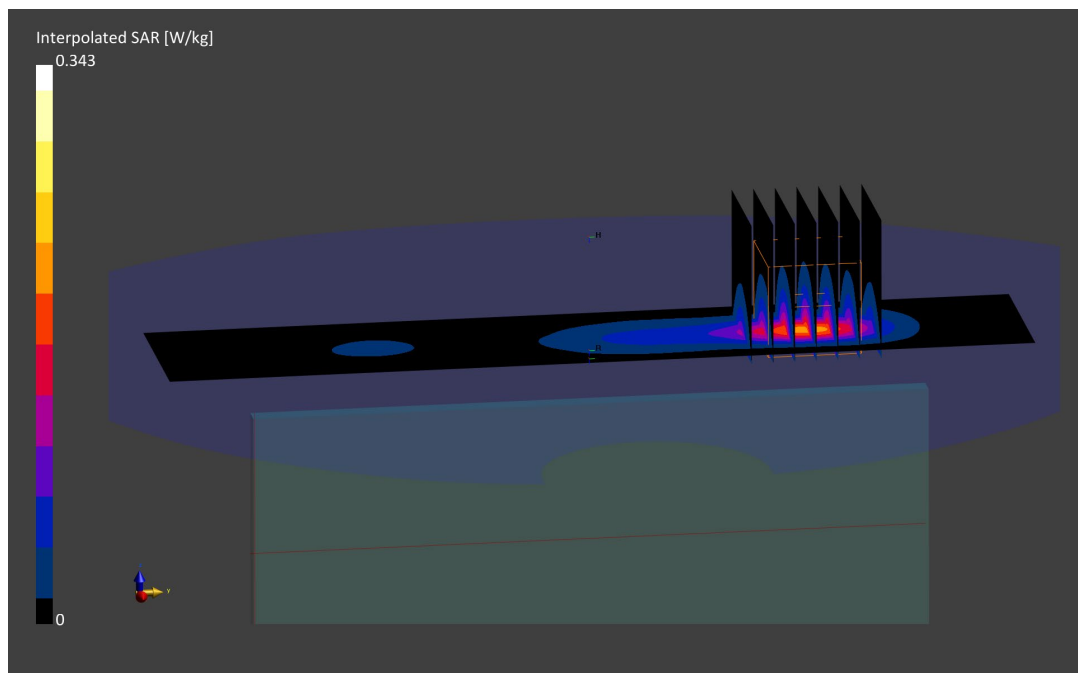
Reference Value = 0.20 W/kg; Power Drift = -0.05 dB

Peak SAR (extrapolated) = 0.343 W/kg

SAR(1 g) = 0.161 W/kg

Smallest distance from peaks to all points 3 dB below is 8.0 mm

Ratio of SAR at M2 to SAR at M1 = 78.8 %



ELEMENT

DUT: PY7-58692W; Type: Portable Handset; Serial: 99823

Communication System: UID:10544 - AAC, WLAN; MAIA: Y; Frequency: 5775.0 MHz
Medium: 5200-5800 Body; Medium parameters used:
f = 5775.0 MHz; cond = 6.20 S/m; perm = 47.4; density = 1000 kg/m³
Phantom Section: Flat; Space: 10.00 mm

Test Date: 07/05/2022; Ambient Temp: 22.1 C; Tissue Temp: 20.8 C

Probe: EX3DV4 - SN7417; ConvF:(4.43,4.43,4.43); Calibrated: 2022-02-22
Sensor-Surface: 1.4mm (VMS + 6p)
Electronics: DAE4 Sn665; Calibrated: 2022-02-22
Phantom: Twin-SAM V8.0; Serial: 2060
Measurement SW: DASY Module SAR V16.0.2.83

**Mode: IEEE 802.11ac, 80 MHz Bandwidth, UNII-3, Chain 0,
Ch. 155, Body SAR, Left Edge, 29.3 Mbps**

Area Scan (40.0 x 200.0): Measurement grid: dx=5.0 mm, dy=10.0 mm

Zoom Scan (22.0 x 22.0 x 22.0): Measurement grid: dx=4.0 mm, dy=4.0 mm, dz=1.4 mm; Graded Ratio: 1.4

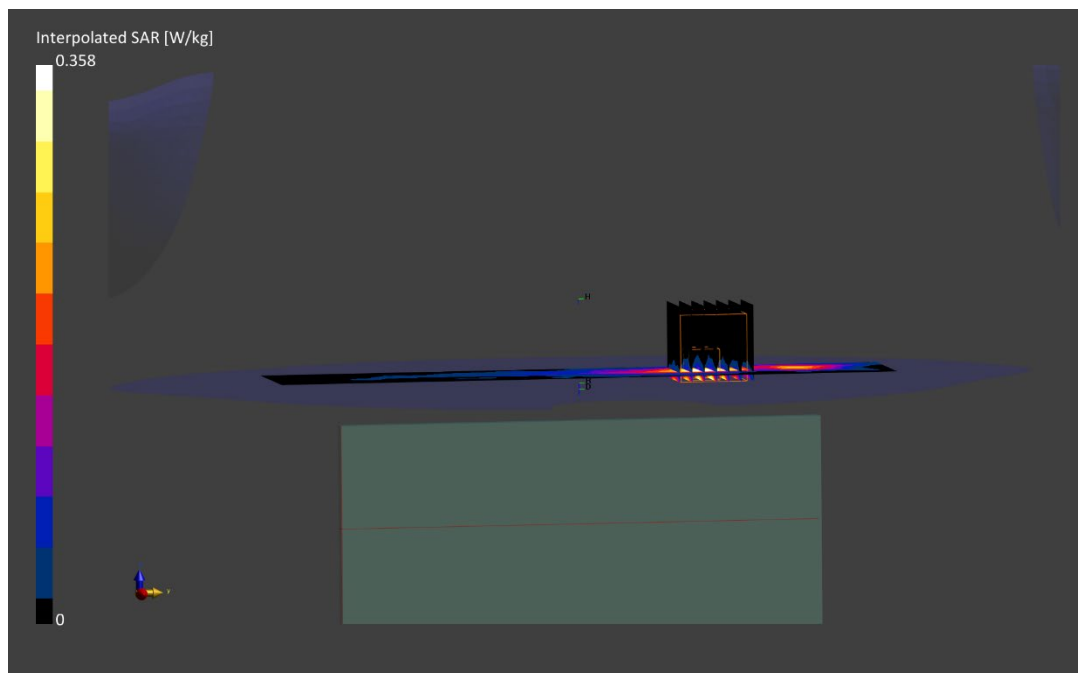
Reference Value = 0.14 W/kg; Power Drift = -0.09 dB

Peak SAR (extrapolated) = 0.358 W/kg

SAR(1 g) = 0.087 W/kg

Smallest distance from peaks to all points 3 dB below is 8.6 mm

Ratio of SAR at M2 to SAR at M1 = 60.4 %



ELEMENT

DUT: PY7-58692W; Type: Portable Handset; Serial: 99583

Communication System: UID:10032 - CAA, Bluetooth; MAIA: Y; Frequency: 2480.0 MHz
Medium: 2450 Body; Medium parameters used:
f = 2480.0 MHz; cond = 2.04 S/m; perm = 51.0; density = 1000 kg/m³
Phantom Section: Flat; Space: 10.00 mm

Test Date: 07/12/2022; Ambient Temp: 21.5°C; Tissue Temp: 21.2°C

Probe: EX3DV4 - SN7552; ConvF:(7.44,7.44,7.44); Calibrated: 2021-09-20
Sensor-Surface: 1.4mm (VMS + 6p)
Electronics: DAE4 Sn1680; Calibrated: 2021-08-04
Phantom: Twin-SAM V8.0; Serial: 2065
Measurement SW: DASY Module SAR V16.0.2.83

Mode: Bluetooth, Chain 0, Body SAR, Ch. 78, 1 Mbps, Left Edge

Area Scan (40.0 x 200.0): Measurement grid: dx=5.0 mm, dy=10.0 mm

Zoom Scan (30.0 x 30.0 x 30.0): Measurement grid: dx=5.0 mm, dy=5.0 mm, dz=1.5 mm; Graded Ratio: 1.5

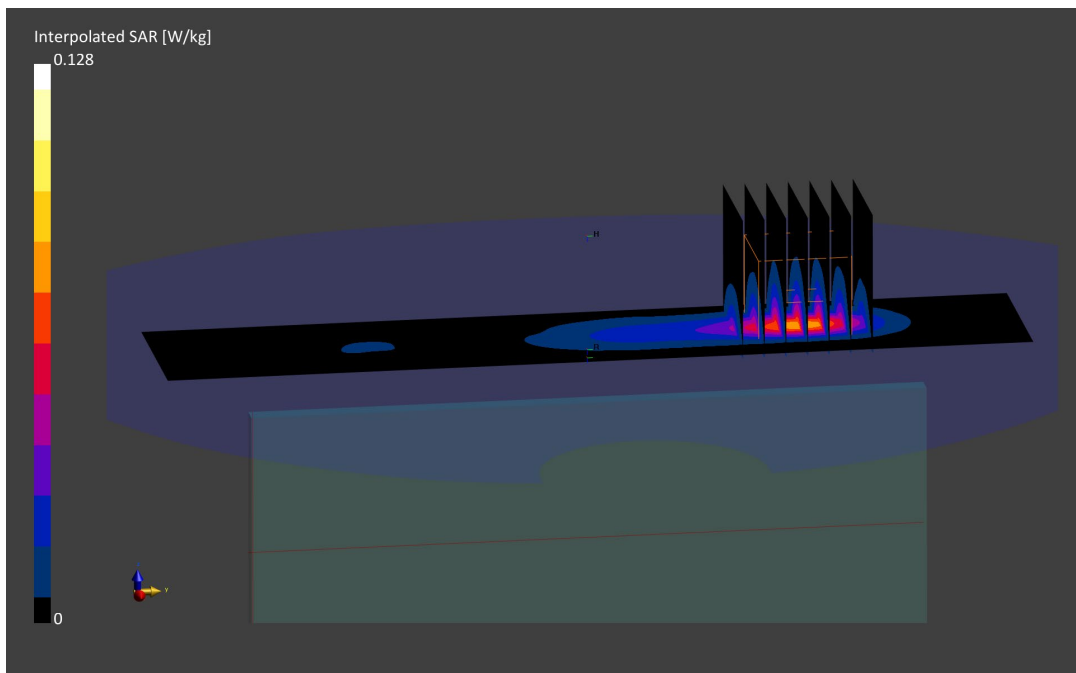
Reference Value = 0.07 W/kg; Power Drift = -0.09 dB

Peak SAR (extrapolated) = 0.128 W/kg

SAR(1 g) = 0.060 W/kg

Smallest distance from peaks to all points 3 dB below is 8.0 mm

Ratio of SAR at M2 to SAR at M1 = 79.6 %



ELEMENT

DUT: PY7-58692W; Type: Portable Handset; Serial: 99823

Communication System: UID:10544 - AAC, WLAN; MAIA: Y; Frequency: 5690.0 MHz
Medium: 5200-5800 Body; Medium parameters used:
f = 5690.0 MHz; cond = 6.07 S/m; perm = 47.6; density = 1000 kg/m³
Phantom Section: Flat; Space: 0.00 mm

Test Date: 07/05/2022; Ambient Temp: 22.1°C; Tissue Temp: 20.8°C

Probe: EX3DV4 - SN7417; ConvF:(4.43,4.43,4.43); Calibrated: 2022-02-22
Sensor-Surface: 1.4mm (VMS + 6p)
Electronics: DAE4 Sn665; Calibrated: 2022-02-22
Phantom: Twin-SAM V8.0; Serial: 2060
Measurement SW: DASY Module SAR V16.0.2.83

**Mode: IEEE 802.11ac, 80 MHz Bandwidth, UNII-2C, Chain 0,
Ch. 138, Phablet SAR, Left Edge, 29.3 Mbps**

Area Scan (40.0 x 200.0): Measurement grid: dx=5.0 mm, dy=10.0 mm

Zoom Scan (22.0 x 22.0 x 22.0): Measurement grid: dx=3.1 mm, dy=3.1 mm, dz=1.2 mm; Graded Ratio: 1.2

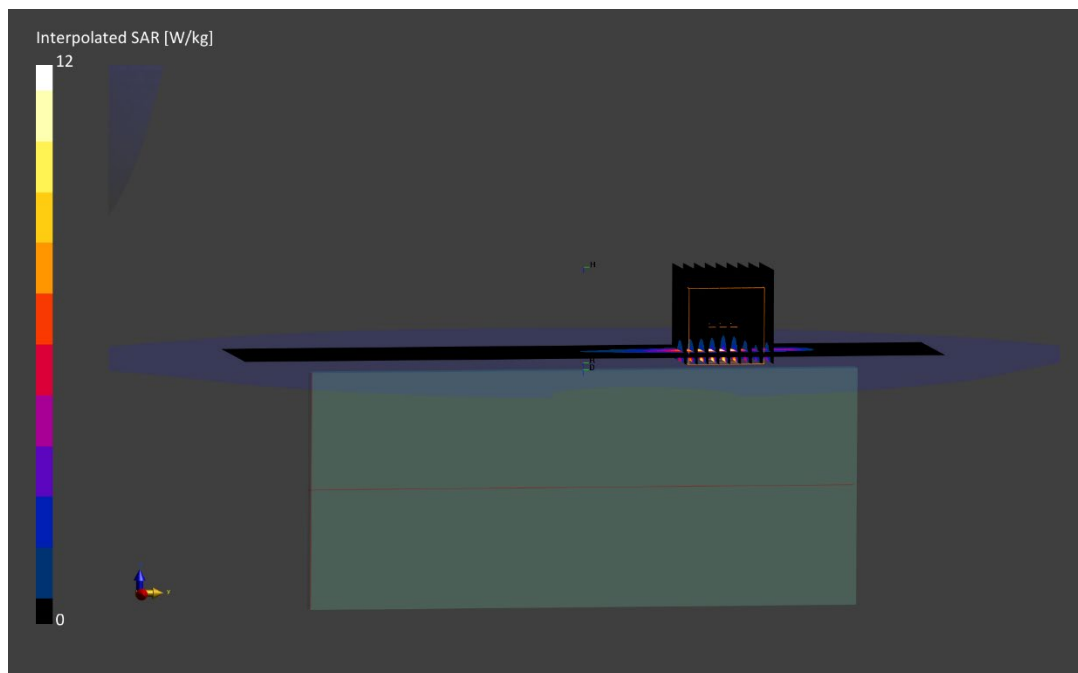
Reference Value = 4.43 W/kg; Power Drift = -0.09 dB

Peak SAR (extrapolated) = 12.0 W/kg

SAR(10 g) = 0.491 W/kg

Smallest distance from peaks to all points 3 dB below is 3.7 mm

Ratio of SAR at M2 to SAR at M1 = 61.3 %



ELEMENT

DUT: PY7-58692W; Type: Portable Handset; Serial: 99542

Communication System: UID:0 - -, CW; MAIA: Y; Frequency: 13.6 MHz
Medium: 30 Head; Medium parameters used:
f = 13.6 MHz; cond = 0.758 S/m; perm = 53.1; density = 1000 kg/m³
Phantom Section: Flat; Space: 0.00 mm

Test Date: 07/10/2022; Ambient Temp: 22.1°C; Tissue Temp: 22.0°C

Probe: EX3DV4 - SN7527; ConvF:(17.78,17.78,17.78); Calibrated: 2022-03-21
Sensor-Surface: 1.4mm (VMS + 6p)
Electronics: DAE4 Sn1272; Calibrated: 2022-03-16
Phantom: ELI V8.0; Serial: 2077
Measurement SW: DASYS Module SAR V16.0.2.136

Mode: NFC, Phablet SAR, Back Side

Area Scan (120.0 x 210.0): Measurement grid: dx=15.0 mm, dy=15.0 mm

Zoom Scan (30.0 x 30.0 x 30.0): Measurement grid: dx=3.6 mm, dy=3.6 mm, dz=1.4 mm; Graded Ratio: 1.4

Reference Value = 0.00 W/kg; Power Drift = 0.08 dB

Peak SAR (extrapolated) = 0.391 W/kg

SAR(10 g) = 0.017 W/kg

Smallest distance from peaks to all points 3 dB below is 3.6 mm

Ratio of SAR at M2 to SAR at M1 = 50.0 %

