

802.11B Wireless Ethernet Bridge

User's Manual

ME101

11Mbps Access Point

Quick Start Guide

Version 1.2

The next-generation wireless LAN device – 11Mbps Access Point, brings Ethernet-like performance to the wireless realm. Fully compliant with IEEE802.11b standard, the 11Mbps Access Point also provides powerful features such as the Windows-based configuration utility, WEP security, SNMP and more. Maximize network efficiency while minimizing your network investment and maintenance costs.

Package Content

11Mbps Wireless LAN Micro Access Point x 1	AC Power Adapter x 1
Software and Documentation CD or Floppy Diskette x 1	Quick Start Guide x 1



Note: If any of the above items are missing or damaged, contact your local dealer for support.

Installing the Wireless LAN Micro Access Point

- Connect the Wireless LAN Micro Access Point to a hub (in Bridge mode) or a PC with its UTP Ethernet cable. Please note that, use the cross-over cable when you directly connect the Wireless LAN Micro Access Point to a PC.
- Connect the power adapter to the power socket on the Wireless LAN Micro Access Point, and plug the other end of the power pack into an electrical outlet.



Note 1: ONLY use the power adapter supplied with the Wireless LAN Micro Access Point. Otherwise, the product may be damaged.

Note 2: The button labeled “DEFAULT” enables you to restore the Wireless LAN Micro Access Point’s default setting. This is used when you forget the password. Please detach the DC power plug and press the “DEFAULT” button on the side panel of the Wireless LAN Micro Access Point. Reconnect the power and keep holding the button in for a few seconds until the Ethernet and Wireless LED indicators blink. This will restore the Wireless LAN Micro Access Point’s default settings and enable you to configure the Access Point via utility, telnet or Web again.

Configuring the Wireless LAN Micro Access Point

The 11Mbps Access Point allows configuration either via the configuration utility, known as Access Point Utility.

Wireless Access Point Utility

The following gives instructions guiding you through the installations of the Wireless Access Point Utility.

1. Insert the Product CD into the CD-ROM drive, or the floppy disk that came with your product kit into the floppy drive on your computer.
2. From the **Start** menu on the Windows desktop, choose **Run**.
3. In the **Run** dialog box, type the path where the utility is located, and click **OK**. For floppy installation: **A:\setup**.
4. Follow the on-screen instructions to install the Wireless Access Point Utility.
5. Upon completion, execute the Wireless Access Point Utility, and it will browse all the Access Points available on the network.
6. Select the Access Point you want to configure. Enter the default password and click the **OK** button. You will be able to view/make configuration of the Wireless LAN Micro Access Point as you desire.



Note: The default password to get access to the Wireless LAN Micro Access Point is “Default”.



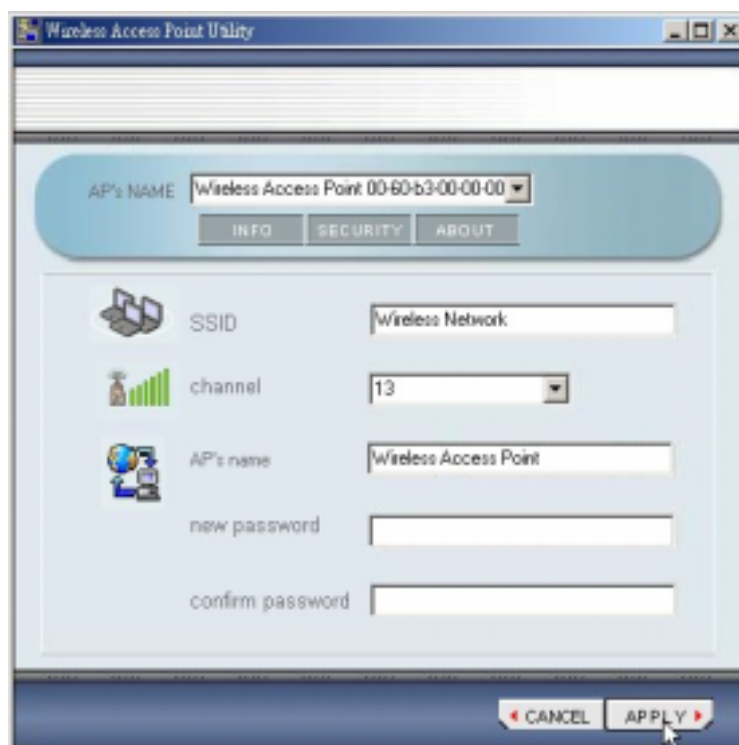
The Wireless Access Point Utility provides 3 items for you to monitor and configure the Wireless LAN Access Point: **Info**, **Security** and **About**.

Info:

This item shows the current information on the 11Mbps Wireless LAN USB Adapter such as AP's Name, SSID, Channel, and IP Address.



You may click the **SETUP** button to configure those parameters.



■ **Assigning the SSID**

The SSID is an unique ID given to the Wireless LAN Micro Access Point. Assign an SSID to your Wireless Micro Access Point. The SSID can have up to 32 characters.

■ **Assigning the Channel**

Select a clear channel as an operational channel for your Wireless LAN Micro Access Point.

■ **Password**

It is highly recommended that you assign a new password to your Access Point for safety issue. Enter the new password in the New Password and Confirm Password fields respectively.

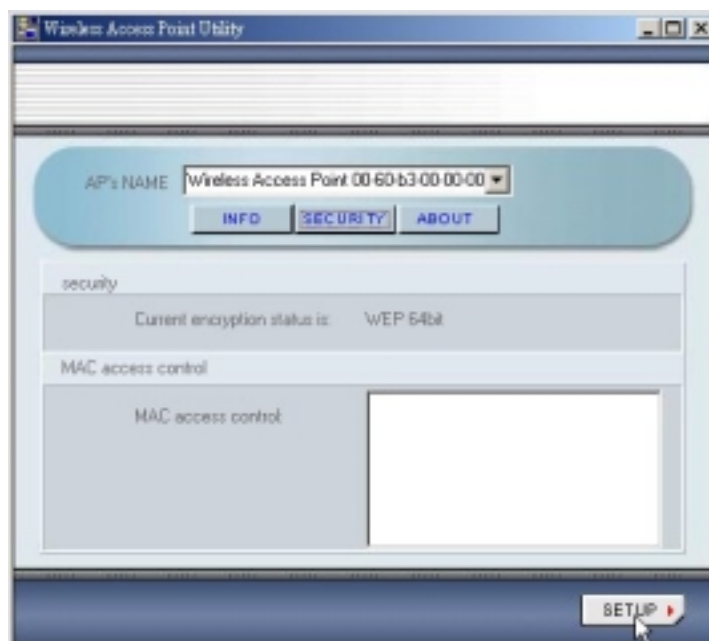
After setting the parameters, click the **APPLY** button to make the changes take effect. To return the previous page, click the **CANCEL** button.

Security:

To prevent unauthorized wireless stations from accessing data transmitted over the network, the Wireless LAN Micro Access Point offers the following levels of security options.

- Data Encryption, known as WEP (Wired Equivalency Privacy), encrypts wireless data transmitted via wireless medium.
- Access Control Table restricts wireless stations to access the Access Point (To be available soon).

Click the Security page you will see the current security status of the Access Point. Click the SETUP button and you may then enable the security function.



WEP

To enable the WEP encryption, check the “**Enable static WEP key encryption**” check box and select the encryption type, either 64 bit or 128 bit. Then enter a WEP Key in the **WEP Key** field.

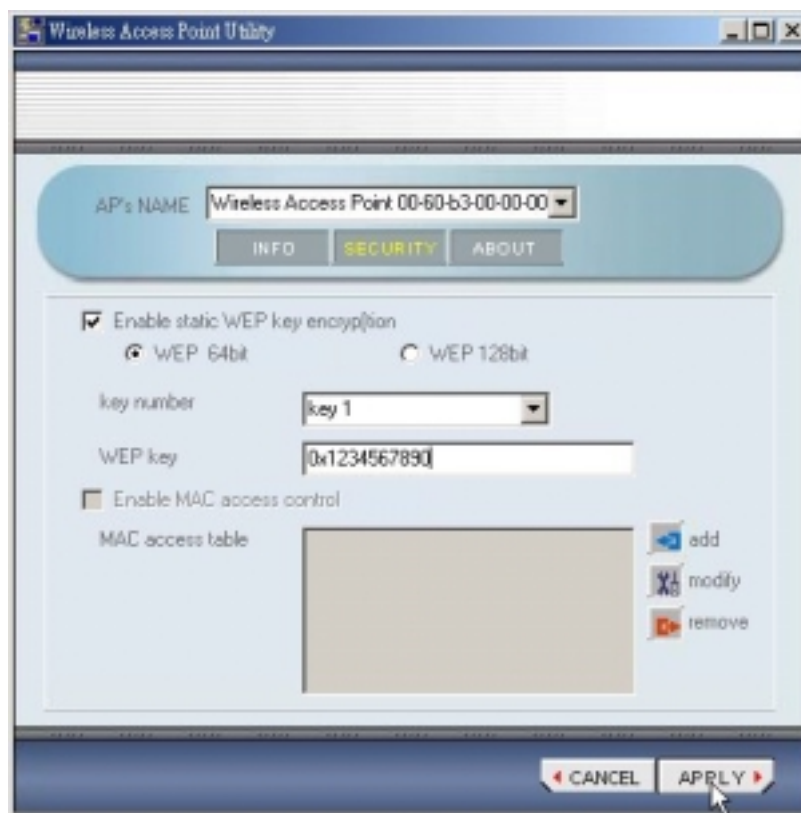
For 64bit encryption you may choose:

- **Alphanumeric: 5 characters** (case sensitive) ranging from “a-z”, “A-Z” and “0-9” (e.g. MyKey)
- **Hexadecimal: 10 hexadecimal digits** in the range of “A-F”, “a-f” and “0-9”, preceded by the characters “0x” values (e.g. 0x11AA22BB33)

For 128bit encryption you may choose:

- **Alphanumeric: 13 characters** (case sensitive) ranging from “a-z”, “A-Z” and “0-9” (e.g. MyKey12345678)
- **Hexadecimal: 26 hexadecimal digits** in the range of “A-F”, “a-f” and “0-9”, preceded by the characters “0x” values (e.g. 0x00112233445566778899AABBCC).

After defining the WEP keys, click the **APPLY** button to make the configuration take effect.



MAC Access Control (to be available soon)

About

The **About** item shows the version of the Wireless Access Point Utility and firmware version of the Wireless LAN Micro Access Point.



Technical Support

You can find the most recent software and updated user documentation will be updated periodically on the supplier Web site. If you have difficulty resolving the problem while installing or using the 11Mbps Wireless LAN Micro Access Point, please contact the supplier for support.

Limited Warranty

This Warranty constitutes the sole and exclusive remedy of any buyer or reseller's equipment and the sole and exclusive liability of the supplier in connection with the products and is in lieu of all other warranties, express, implied or statutory, including, but not limited to, any implied warranty of merchantability of fitness for a particular use and all other obligations or liabilities of the supplier.

In no even will the supplier or any other party or person be liable to your or anyone else for any damages, including lost profits, lost savings or other incidental or consequential damages, or inability to use the software provided on the software media even if the supplier or the other party person has been advised of the possibility of such damages.

The following are special terms applicable to your hardware warranty as well as services you may use during part of the warranty period. Your formal Warranty Statement, including the warranty applicable to our Wireless LAN products, appears in the Quick Installation Guide which accompanies your products.

Duration of Hardware Warranty: One Year

Replacement, Repair or Refund Procedure for Hardware:

If your unit needs a repair or replacement, return it to your dealer/distributor in its original packaging. When returning a defective product for Warranty, always include the following documents:

- The Warranty Repair Card
- A copy of the invoice/proof of purchase, and
- The RMA Report Form (To receive a Return Materials Authorization form (RMA), please contact the party from whom you purchased the product).

Upon proof-of-purchase we shall, at its option, repair or replace the defective item at no cost to the buyer.

This warranty is contingent upon proper use in the application for which the products are intended and does not cover products which have been modified without the reseller's approval or which have been subjected to unusual physical or electrical demands or damaged in any way.

Please complete the information below and include it along with your products.

Name:	
Title:	
Company:	
Telephone:	
Fax:	
Email:	
City/State/Zipcode:	
Country:	
Product Name:	
Serial Number:	
MAC Address:	
Invoice Date:	
Product Description:	

If you have any further questions, please contact your local authorized reseller for support.

FCC Information

This device complies with Part 15 of the FCC Rules. Operation is subject to the following two conditions: (1) this device may not cause harmful interference, and (2) this device must accept any interference received; including interference that may cause undesired operation.

Federal Communications Commission (FCC) Statement

This Equipment has been tested and found to comply with the limits for a Class B and C digital device, pursuant to Part 15 of the FCC rules. These limits are designed to provide reasonable protection against harmful interference in a residential installation. This equipment generates, uses and can radiate radio frequency energy and, if not installed and used in accordance with the instructions, may cause harmful interference to radio communications. However, there is no guarantee that interference will not occur in a particular installation. If this equipment does cause harmful interference to radio or television reception, which can be determined by turning the equipment off and on, the user is encouraged to try to correct the interference by one or more of the following measures:

- Reorient or relocate the receiving antenna.
- Increase the separation between the equipment and receiver.
- Connect the equipment into an outlet on a circuit different from that to which the receiver is connected.
- Consult the dealer or an experienced radio/TV technician for help.

Tested to comply with FCC standard. FOR HOME OR OFFICE USE.



FCC RF Radiation Exposure Statement:

Warning: Changes or modifications to this unit not expressly approved by the party responsible for compliance could void the user authority to operate the equipment.

1. To comply with FCC RF exposure compliance requirements, a separation distance of at least 20 cm must be maintained between the antenna of this device and all persons.
2. This Transmitter must not be co-located or operating in conjunction with any other antenna or transmitter

Service Centre:

COMPANY NAME: ZCOMAX TECHNOLOGIES, INC.

ADDRESS: 13850 CERRITOS CORPORATE DR., SUITE C CERRITOS, CA 90703

TEL: (562) 926-4588