

Pacific Wireless

693 E Draper Heights Way Suite 210
Draper, UT 84020
TEL (801) 572-3024
FAX (801) 572-3025
www.pacwireless.com

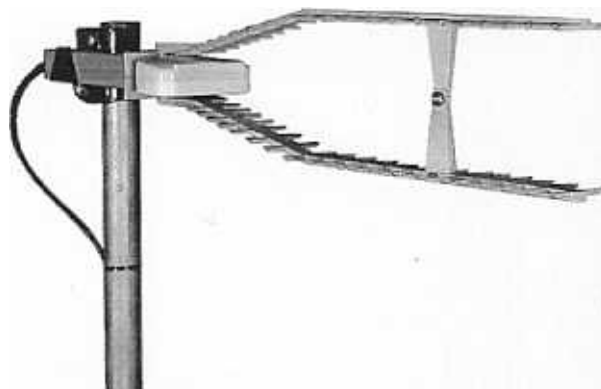
PAWVA24-16 DATA SHEET

Vagi Series Antenna

2400 to 2485 MHz Operation

Features

- Compact, Low Profile 16 dBi Antenna Gain
- Low Cost compared to other 16dBi Gain Antennas
- Very Low Wind Loading. Aesthetic design
- QuikClamp Bracket for 1.0" to 1.5" Pole Diameter
- 45 Deg tilt and 360 Deg rotation adjustments
- Vertical or Horizontal Polarization
- 24" Pigtail with Type N Female or N Male Connector
- Rugged, Lightweight and Waterproof
- Frequency Options Available between 1700 and 2700 Mhz



*16dBi Directional Vagi Antenna – Horizontal

Applications

- 2.4 GHz ISM Band Applications
- WISP CPE Equipment
- Point to Multi-point Systems
- Wireless Broadband Systems
- Wireless Internet Access
- Building to building high speed links

Description

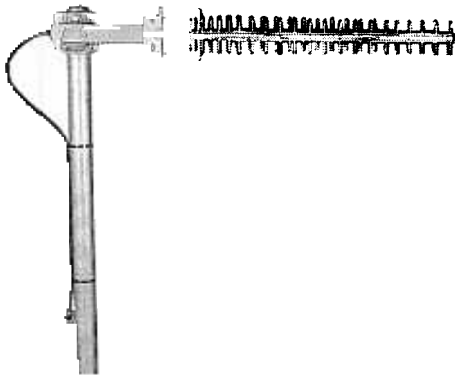
The Vagi Series antenna system offered by Pacific Wireless is constructed of Die Cast Aluminum Alloy with anti-corrosion alodine finish. They come standard with a choice of an N Female or N Male connector and an adjustable 45 Deg Tilt galvanized steel QuikClamp bracket which accommodates a 1" to 1.5" pole diameter. The Vagi Series antenna can be used in a wide variety of wireless systems where low cost, good performance and low wind loading are important factors. They have been approved for use by many homeowner associations with strict CC&R restrictions. Various frequency options are available between 1700 and 2700 MHz (*Contact Pacific Wireless*).

Specifications

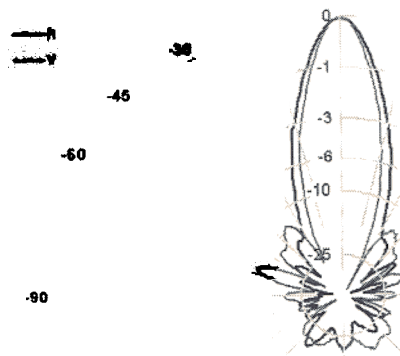
Parameter	Model	Min	Typ	Max	Units
Frequency Range	PAWVA24-16	2400		2485	MHz
Input Return Loss (S_{11})			-12		dB
VSWR			1.5:1		
Impedance			50		OHM
Input Power			100		W
Pole Diameter (OD)		1 25		1.5 38	inch mm
Operating Temperature		-45		+70	Deg C

*Note: Pacific Wireless does not supply the mounting pole

2400 - 2485 MHZ	PAWVA24-16
<i>Gain</i>	16dB
<i>3db Beam Angle (E-Plane)</i> <i>Vertical Polarity</i>	25 deg
<i>3dB Beam Angle (H-Plane)</i> <i>Horizontal Polarity</i>	30 deg
<i>Front to Back</i>	> 19dB
<i>Rated Wind Velocity</i>	125mph (56m/sec)
<i>Weight</i>	1.5 Lbs (0.56 Kg)
<i>Dimension L x W x H</i>	22" x 3" x 4" (559 x 76 x 102mm)



16dBi Vagi Shown in Vertical Polarization

Antenna Patterns at 2.45GHz**Notes:**

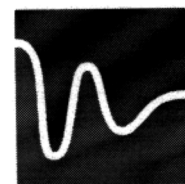
- All shipments F.O.B. Draper, UT 84020
- All antennas carry a 2 Year Warranty

System Ordering:

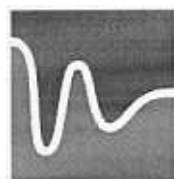
PAWVA24-16 16dB Vagi Series 2.4GHz Antenna with N Male Connector

PAWVA24-16F 16dB Vagi Series 2.4GHz Antenna with N Female Connector

For further information contact:

**Pacific Wireless**

693 E Draper Heights Way Suite 210
 Draper, UT 84020
 TEL (801) 572-3024
 FAX (801) 572-3025
www.pacwireless.com



Pacific Wireless

693 E. Draper Heights Way Suite 210
Draper, UT 84020
TEL (801) 572-3024
FAX (801) 572-3025
www.pacwireless.com

PAWOD24 DATA SHEET

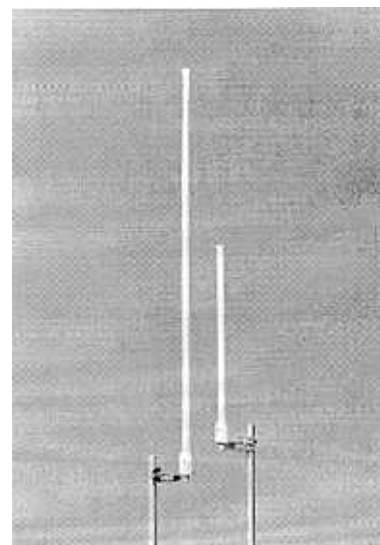
Omni Directional Antennas 2400 to 2485 MHz Operation

Features

- 9 and 12 dB Antenna Gain
- 50 Ω Passive Feed
- Type N Female Connector
- Optimized for 2.4GHz ISM Band
- Rugged, Lightweight and Waterproof
- 360 deg coverage

Applications

- 2.4 GHz ISM Band Applications
- Point to Multi-point Systems
- Wireless Broadband Systems



Description

The Omni Directional antenna systems offered by Pacific Wireless are constructed of UV-stable fiberglass. They feature 50 ohm passive feeds that come standard with type N female connectors. They can be used in a wide variety of wireless systems.

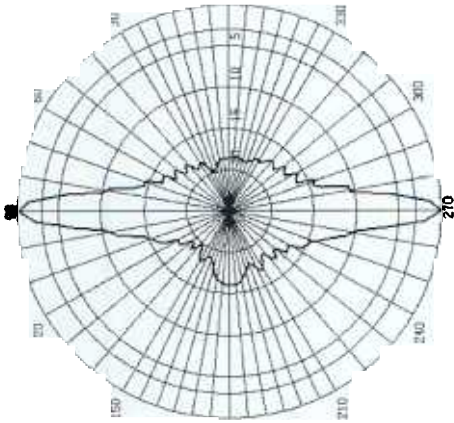
Specifications

Parameter	Min	Typ	Max	Units
Frequency Range	2400		2485	MHz
Input Return Loss (S_{11})			-12	dB
VSWR			1.5:1	
Impedance		50		OHM
Input Power			100	W
Pole Diameter (OD)	1 25		2 50	inch mm
Operating Temperature	-40		+70	Deg C

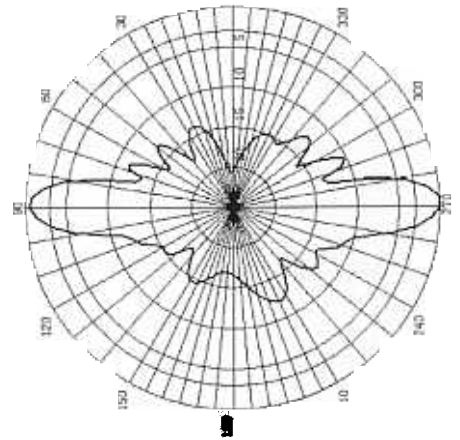
*Note: Pacific Wireless does not supply the mounting pole or coax cable.

2400 - 2485 MHZ	PAWOD24-9	PAWOD24-12
Gain	9dBi	12dBi
Vertical Beam Width	14deg	7 deg
Electrical Downtilt	-	-
Rated Wind Velocity	125mph (56 M/sec)	125mph (56 M/sec)
Weight	1.1 Lbs (0.4Kg)	1.3 Lbs (0.49Kg)
Dimension (L +/-1.0")	20" (508mm)	40" (1016mm)
Diameter Approx. 0.6" (15mm)		

Antenna Patterns at 2.45GHz



12dB Vertical Antenna Pattern



9dB Vertical Antenna Pattern

Notes:

- All shipments F.O.B. Pacific Wireless Draper, UT 84020
- All antennas carry a 2 Year Warranty

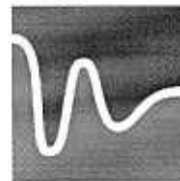
System Ordering: PAWOD24- ☐ ☐

Antenna Gain

9 – 9dBi

12 – 12dBi

For further information contact:



Pacific Wireless

693 E. Draper Heights Way Suite 210
Draper, UT 84020
TEL (801) 572-3024
FAX (801) 572-3025
www.pacwireless.com

Pacific Wireless

693 E Draper Heights Way Suite 210
Draper, UT 84020
TEL (801) 572-3024
FAX (801) 572-3025
www.pacwireless.com

PAWSA24-12/16

DATA SHEET

Sector Antenna Systems

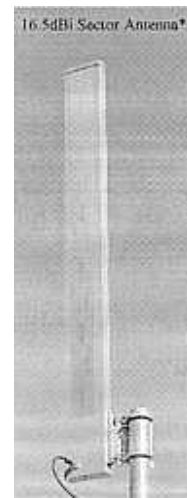
2400 to 2500 MHz Operation

Features

- 50 Ω Passive Feed with Type N Female Connector
- Optimized for 2.4GHz ISM Band; 95 Degree Coverage (-3dB)
- 12 and 16.5 dBi Antenna Gain; Horizontal Polarity
- Rugged and Lightweight, 2 Year Warranty

Applications

- 2.4 GHz ISM Band Applications
- Multi-point Campus Connections
- Multi-point Wireless Bridges
- Multi-point Site Data Links
- Wireless Broadband
- Wireless Internet



Description

The Sector antenna systems offered by Pacific Wireless are constructed from rigid aluminum extrusion, these units are powder coated and sealed with PTFE tape providing lightweight, rigid, weatherproof units. They feature 50 ohm passive feeds that come standard with type N female connectors.

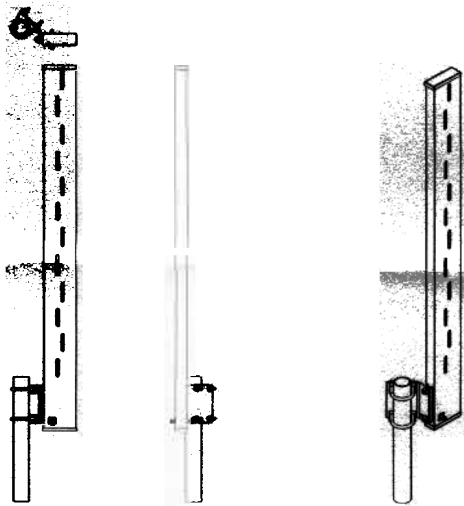
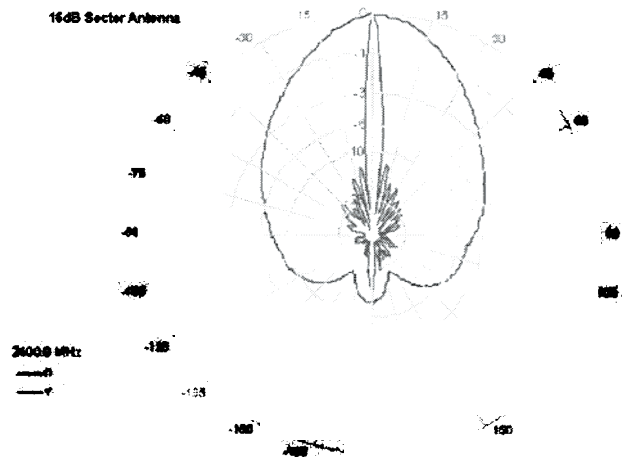
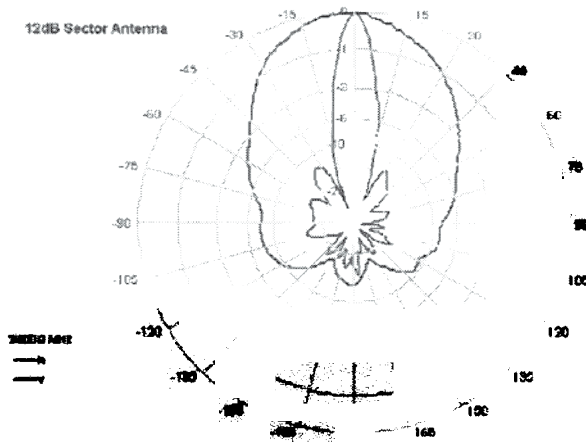
Specifications

Parameter	Model	Min	Typ	Max	Units
Frequency Range	PAWSA24-12 PAWSA24-16	2400 2400		2500 2500	MHz
Input Return Loss (S_{11})			-12		dB
VSWR			1.5:1		
Impedance			50		OHM
Input Power			100		W
Pole Diameter (OD)		2 (53)		2.5 (60)	Inch (mm)
Operating Temperature		-30		+65	Deg C

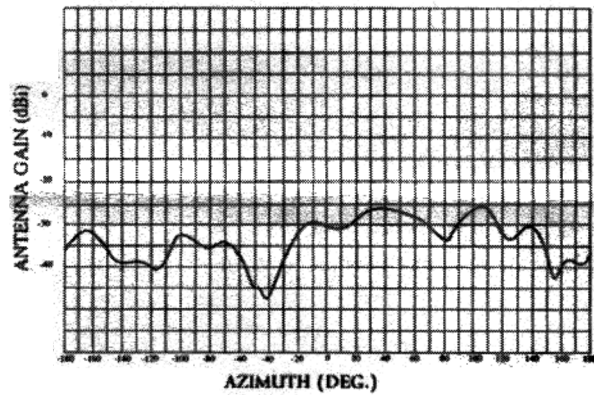
*Note: Pacific Wireless does not supply the mounting pole or coax cable.

2400 - 2500 MHz		PAWSA24-12	PAWSA24-16
Gain		12dB	16.5 dB
Horizontal Beam Width		95 deg	95 deg
Vertical Beam Width		18 deg	7 deg
Polarization		Horizontal	Horizontal
Cross Pole		25 dB	25 dB
Front to Back		14dB	13.4dB
DownTilt		10 deg	10 deg
Wind Loading	100MPH	25 lbf	63 lbf
	140MPH	48 lbf	124 lbf
	100MPH: 1/2" Radial Ice	34 lbf	80 lbf
Weight		6 Lbs	9 Lbs
		22"x 4.7" x 2.2"	60"x 4.7" x 2.2"

Integrated Antenna Patterns



SINGLE SIDED CROSS POLARISATION



Notes:

- All shipments F.O.B. Draper, UT 84020
- All antennas carry a 2 Year Warranty

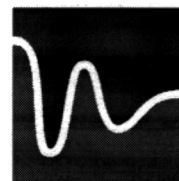
System Ordering: PAWSA24- ☐ ☐

Antenna Gain

12 – 12dBi

16 – 16dBi

For further information contact:



Pacific Wireless

693 E Draper Heights Way Suite 210

Draper, UT 84020

TEL (801) 572-3024

FAX (801) 572-3025

www.pacwireless.com