

# Statement

We Quectel Wireless Solutions Co., Ltd declare the following models.

**Product Name:** LTE-A Cat 6 M.2 Module

**Model Number:** EM060K-GL

**FCC ID:** XMR2022EM060KGL

**IC:** 10224A-22EM060KGL

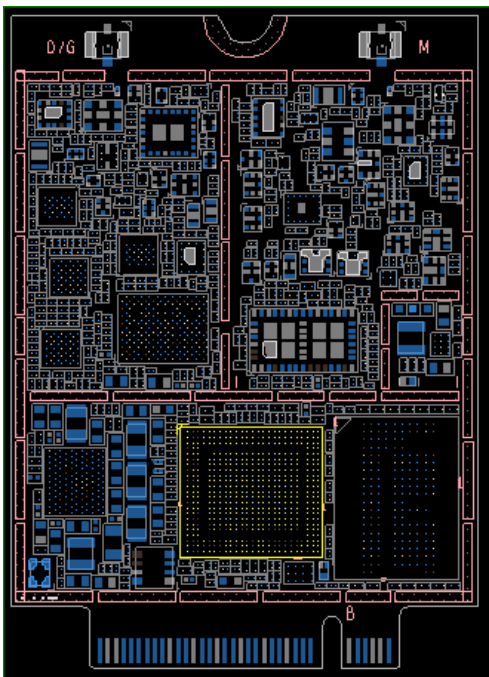
**Hardware Version:** R1.0

EM060K-GL and EM120K-GL support the same bands, share the same software and hardware design.

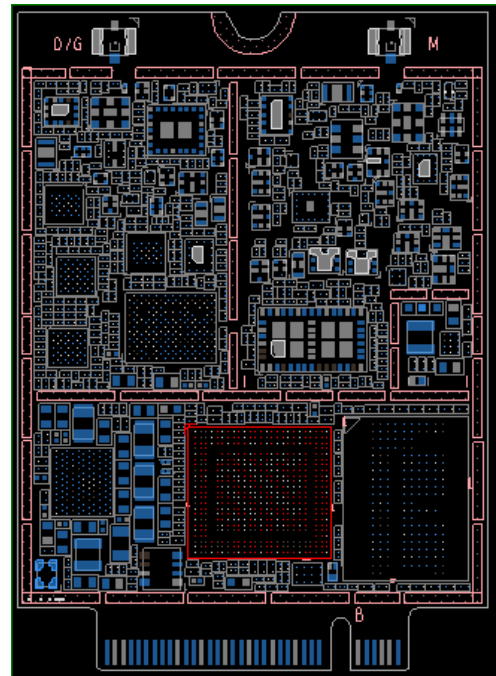
The differences between EM060K-GL and EM120K-GL are as follows:

1. EM120K-GL supports CAT12 and EM060K-GL supports CAT6.
2. EM060K-GL default setting USB 2.0, EM120K-GL default setting USB 3.0.

Please refer to Qualcomm's declaration 'SDX12 SKUs\_Quectel'.



EM120K-GL uses the SDX12-0



EM060K-GL uses the SDX12-2

Above changes won't impact the protocol and RF performance for original frequency bands.

Your assistance on this matter is highly appreciated.

So, we have performed spot checks on the following items to verify that if any unexpected RF

conducted power or emission changes can be noted. The test results show that all spot check data are within the instrument measurement uncertainty and data reuse is justifiable.

**Verification test items with 1 samples:**

- QPSK Conducted Power
- Conducted Spurious Emission
- Conducted Band Edge

please refers to included exhibit "Test Reports.pdf" for detail

**Reuse data test items**

- Conducted Power / EIRP/ ERP / PAPR / OBW / Modulation characteristics / Frequency stability
- Radiated Emission
- End User Device Additional Requirements of §96.47

**Sincerely,**

**Name:** *Jean Hu*

**Title:** Certification Section