

Internal Photos

The original Magnetron is LG/2M226; the new one is Matsushita/2M167B-M11.

The original High Voltage Capacitor is Bicaï-1.05uF; the new one is Bicaï-0.95uF.

Following are the specification and photo:

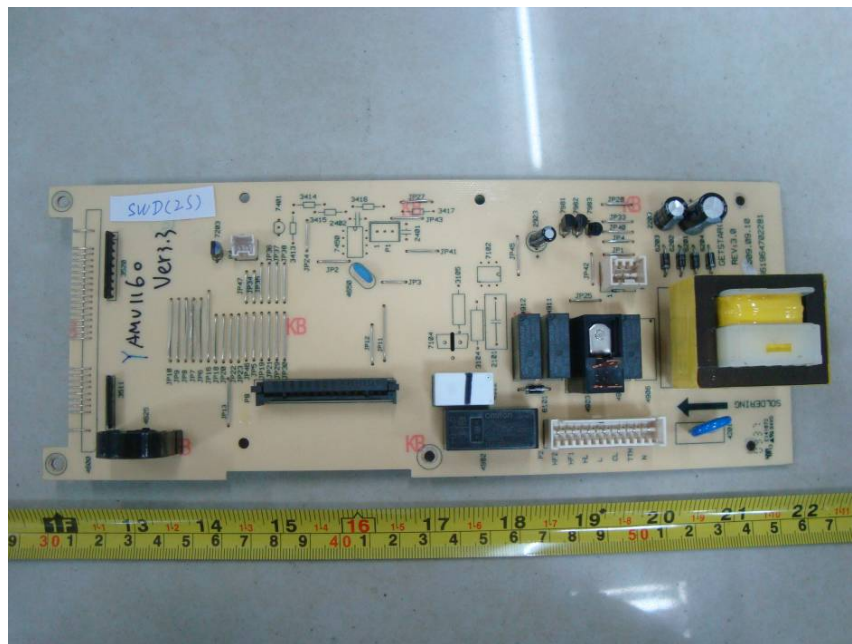
EUT - Cover off View



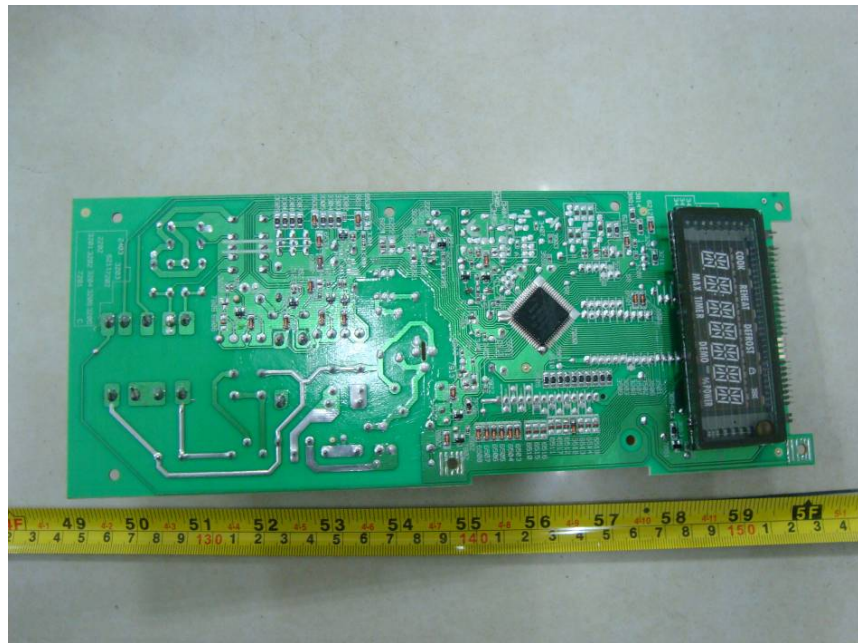
EUT - Magnetron View



EUT – Main Board Top View



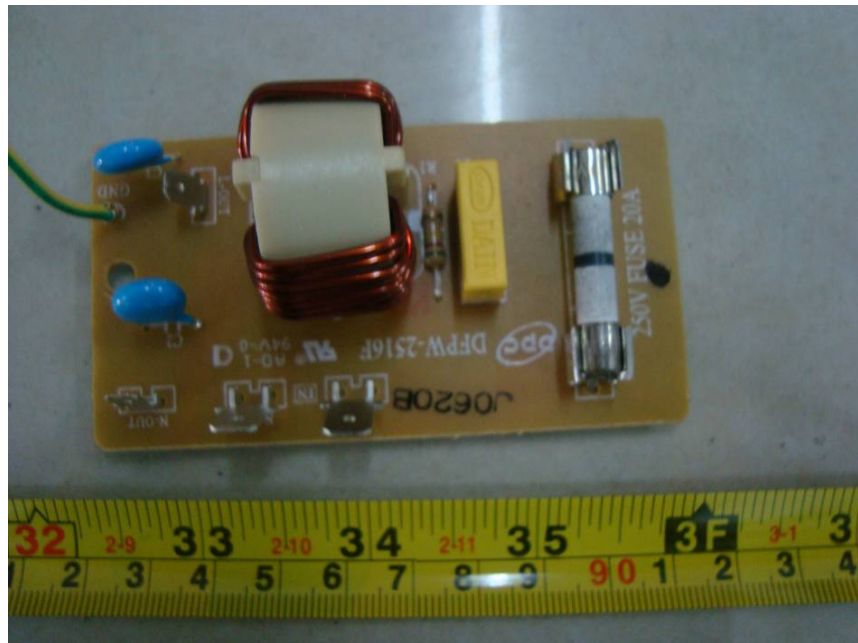
EUT – Main Board Bottom View



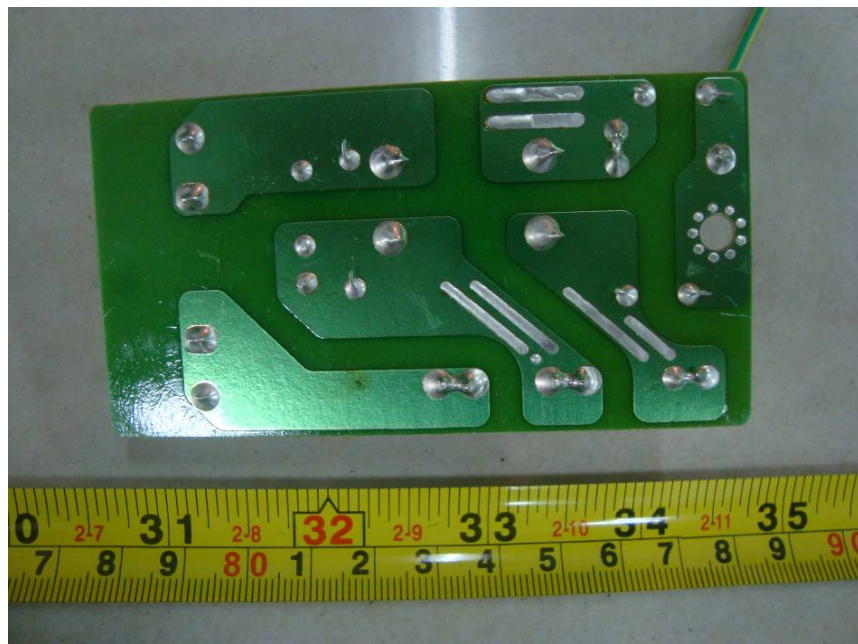
EUT - Transformer View



EUT - EMI Filter Board Top View



EUT - EMI Filter Board Bottom View



EUT - Capacitor View

