

Internal Photos

The original Magnetron is Matsushita/2M167B-M16; the new one is LG/2M226.

The original High Voltage Transformer is EleDEX/EDX-JK1013A-3T; the new one is DPC/W-1000.

Following are the specification and photo:

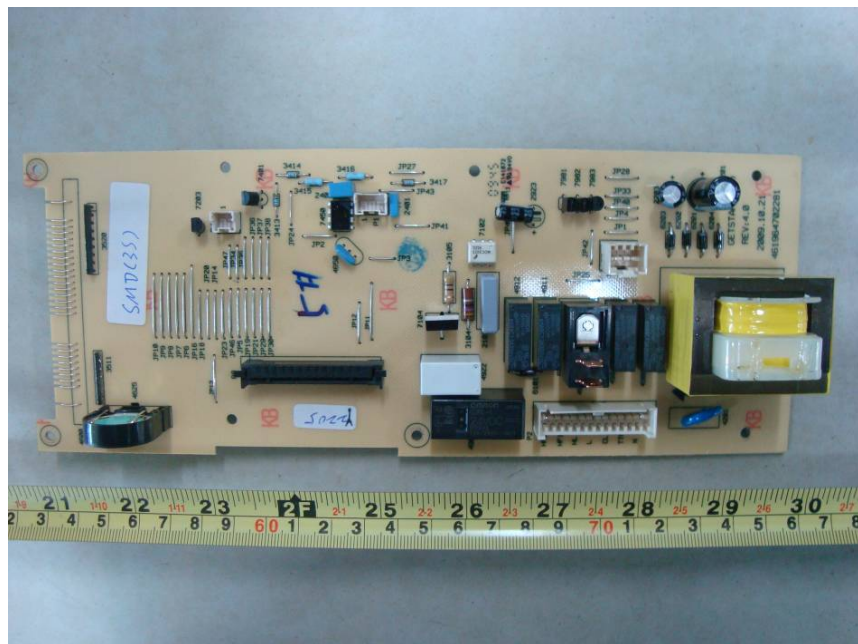
EUT - Cover off View



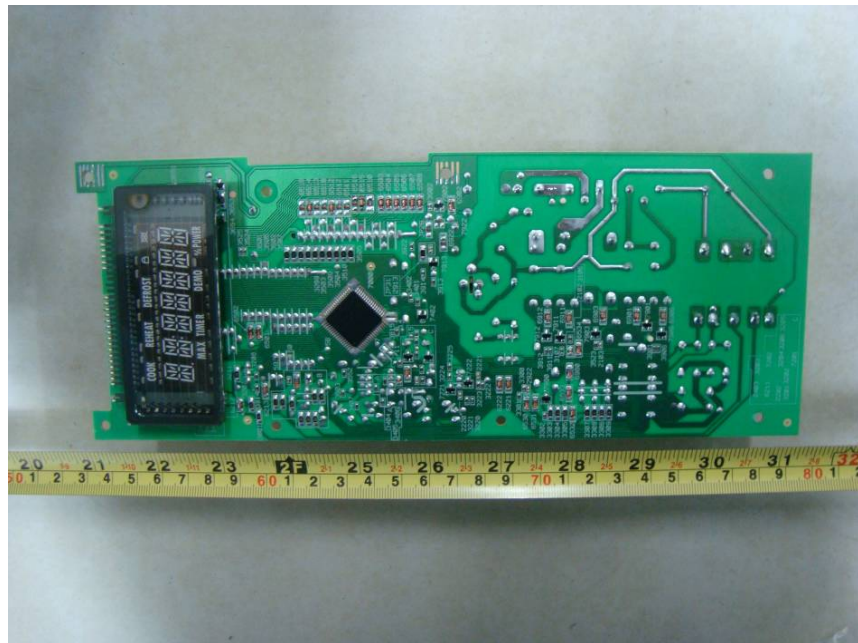
EUT - Magnetron View



EUT – Main Board Top View



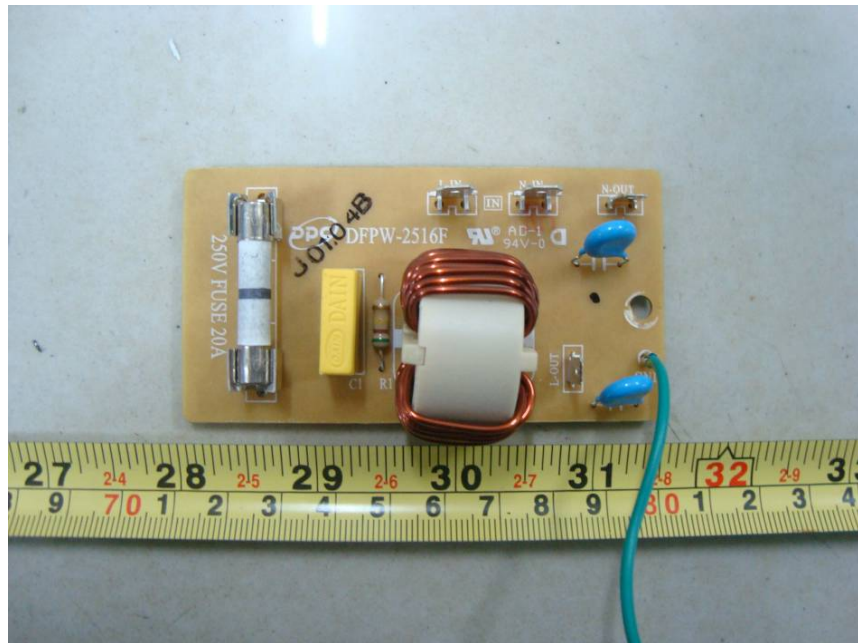
EUT – Main Board Bottom View



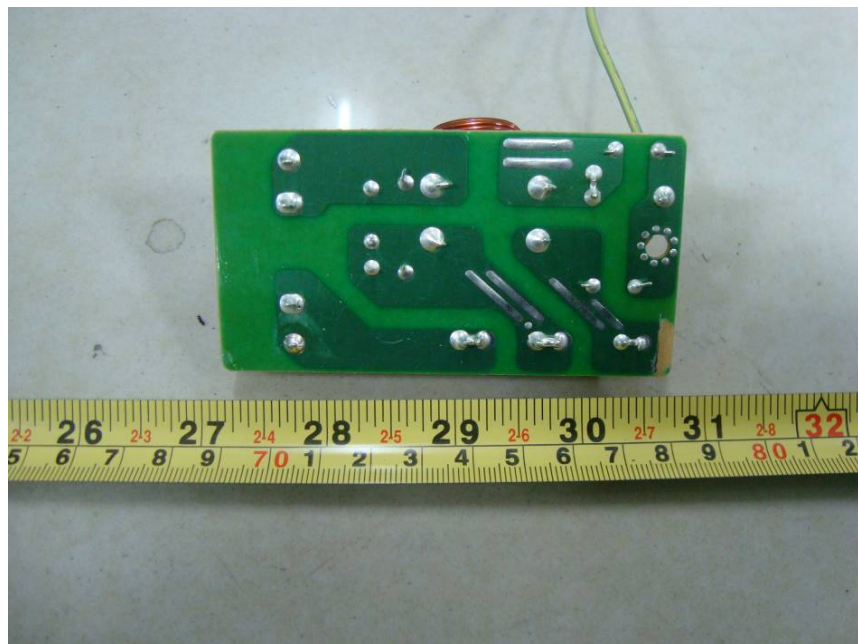
EUT - Transformer View



EUT - EMI Filter Board Top View



EUT - EMI Filter Board Bottom View



EUT - Capacitor View

