

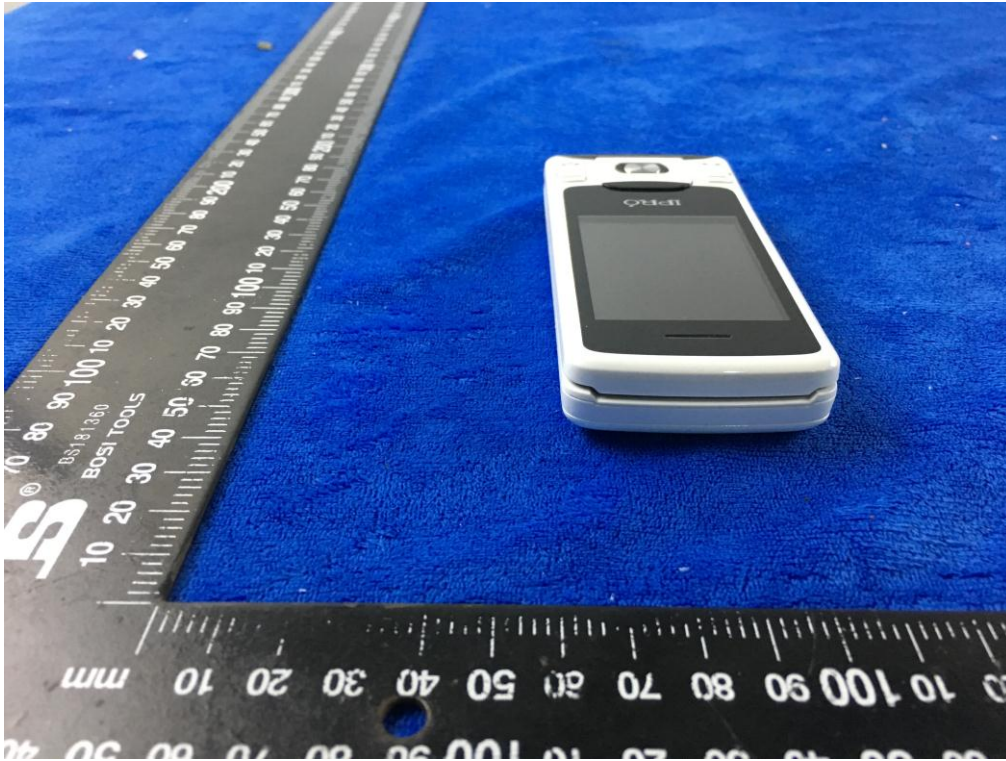
EUT - Front View



EUT - Rear View



EUT - Top View



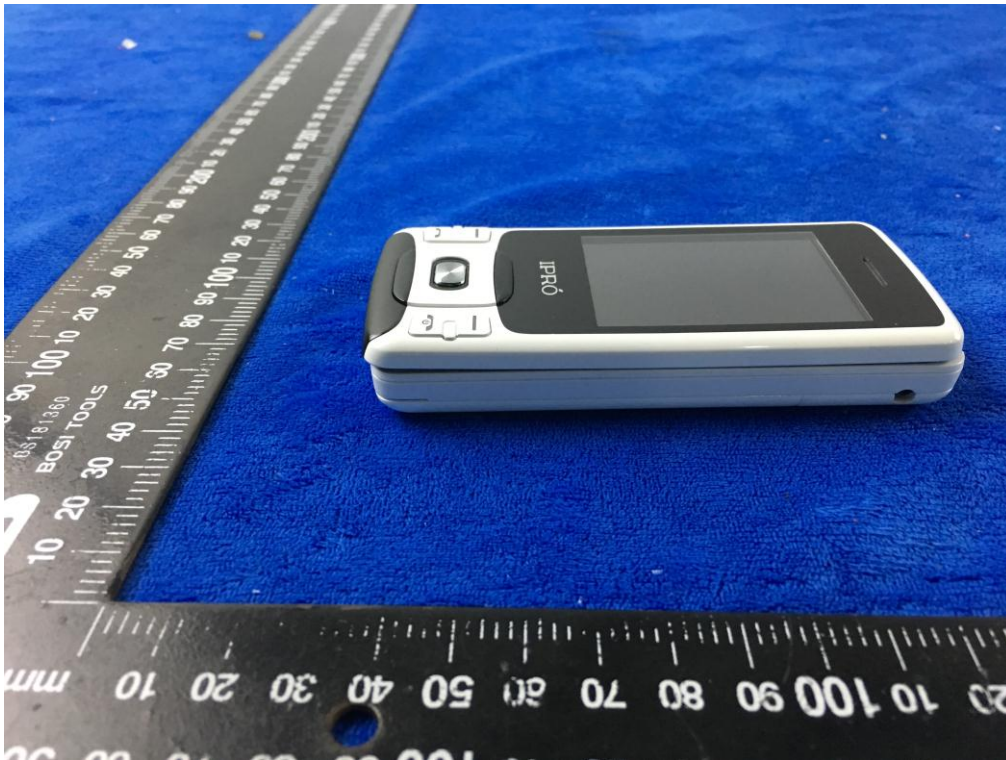
EUT - Bottom View



EUT - Left View



EUT - Right View



Annex B.ii. Photograph: EUT Internal Photo

Cover Off - Top View 1



Cover Off - Top View 2



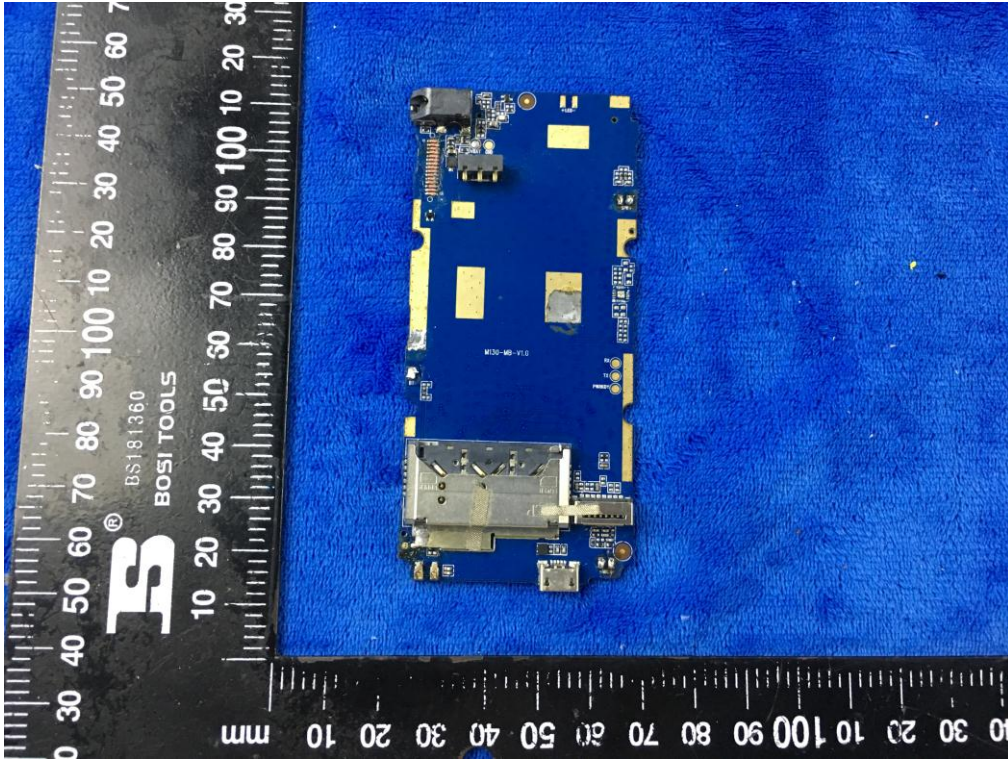
Battery - Front View



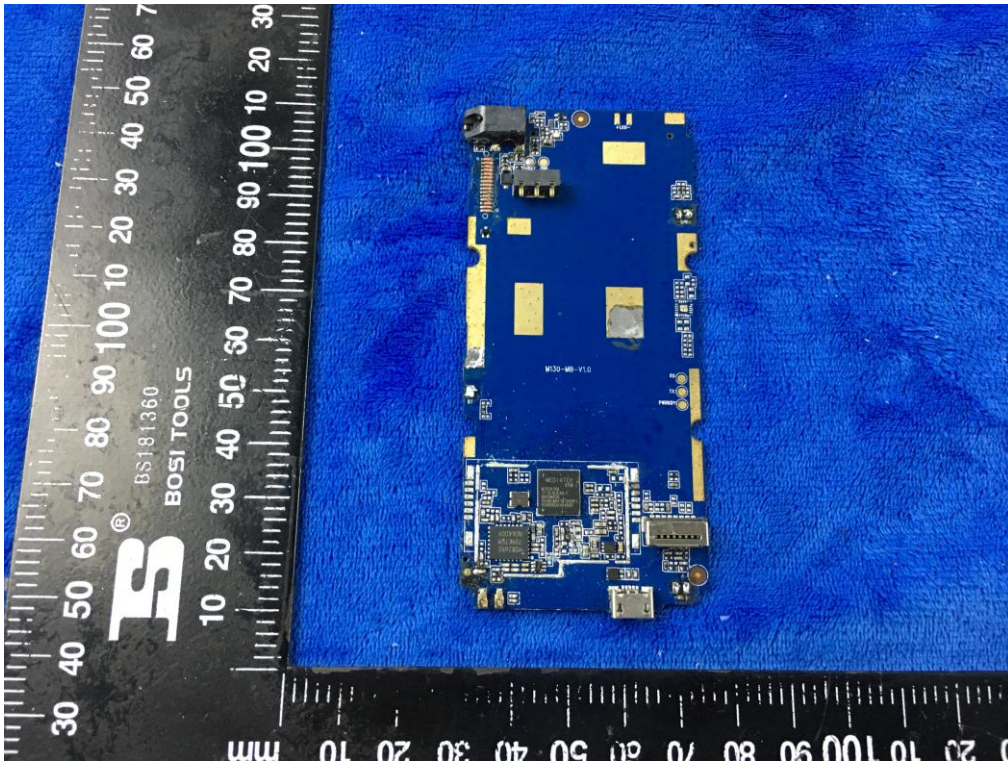
Battery - Rear View



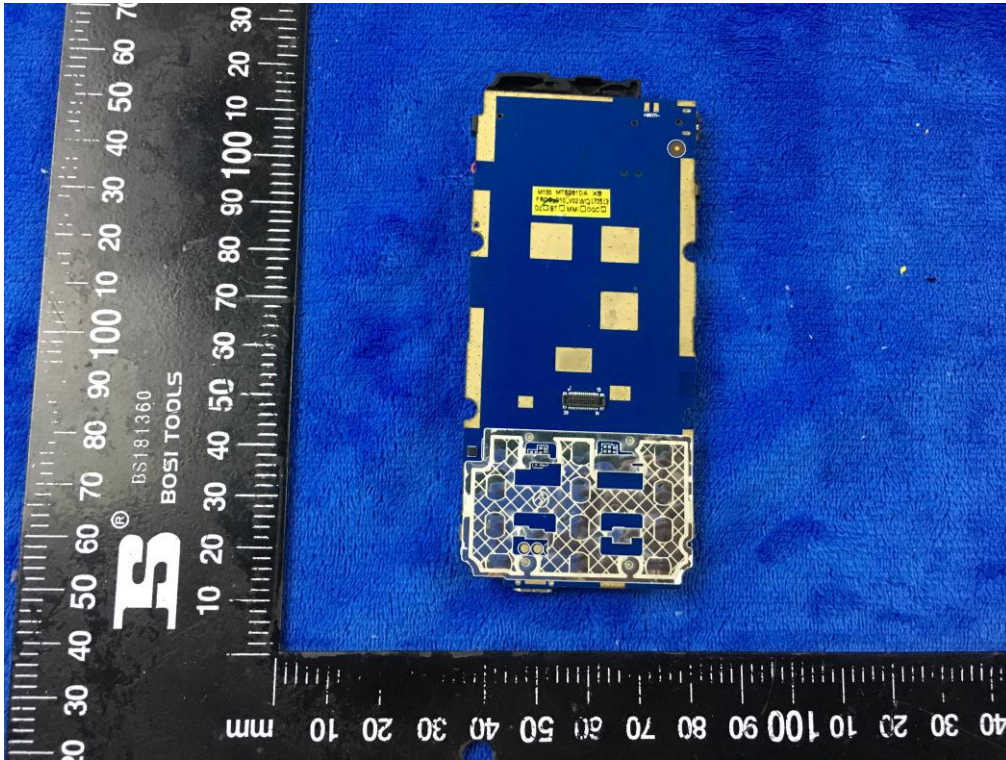
Mainboard with Shielding - Front View



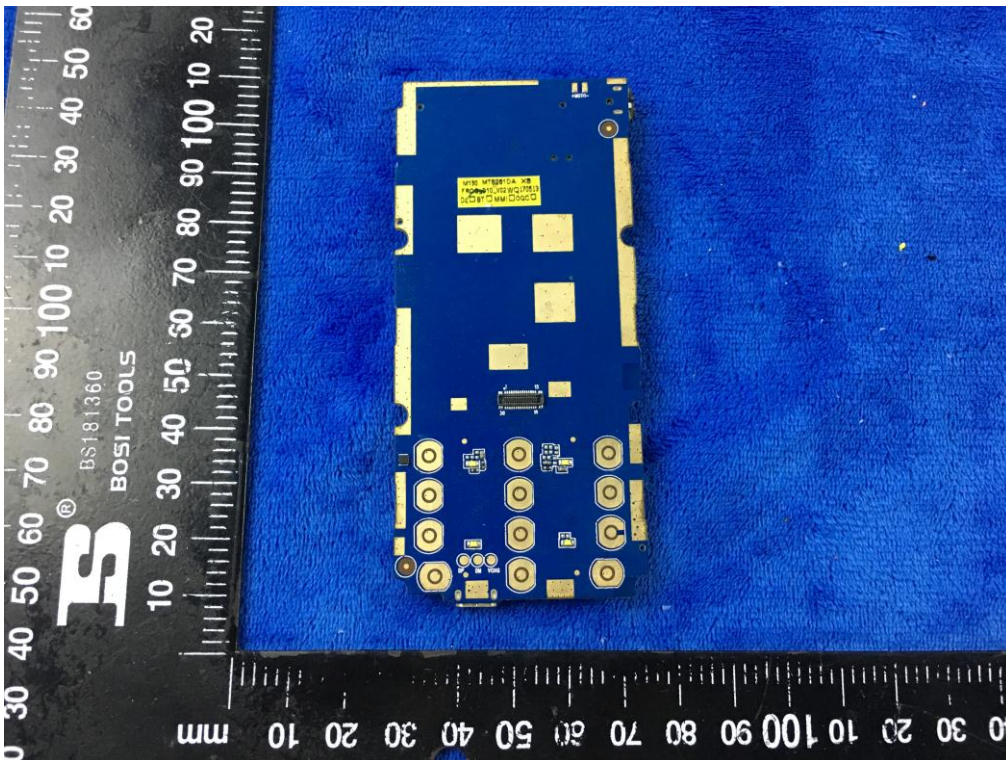
Mainboard without Shielding - Front View



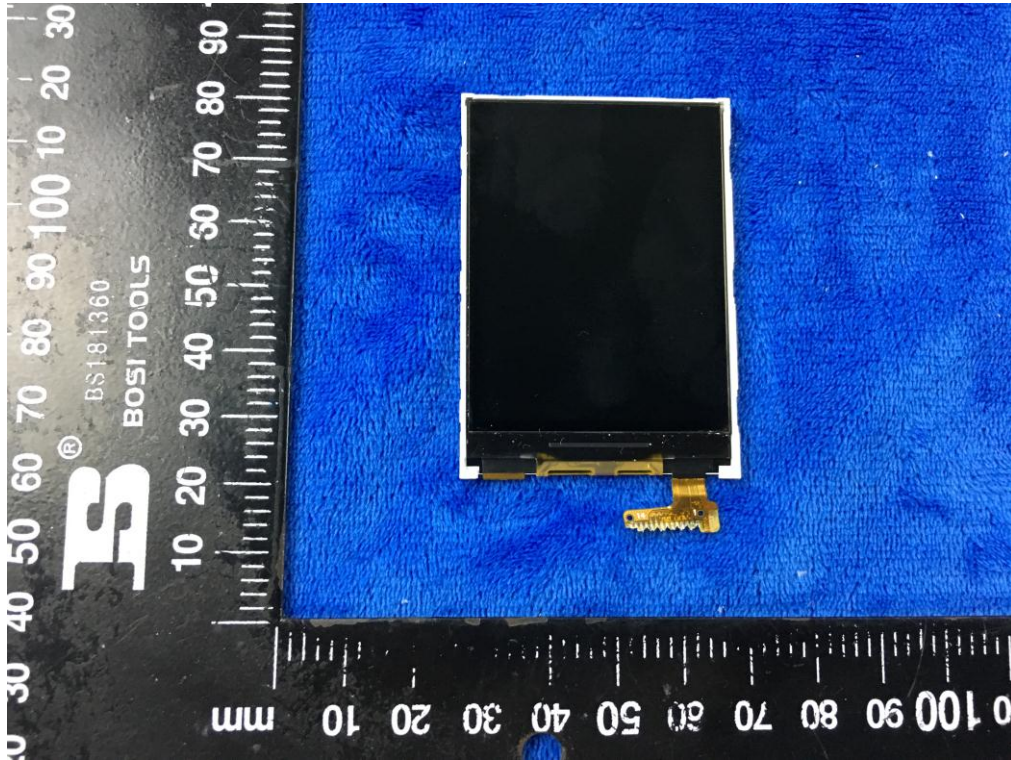
Mainboard with Shielding – Rear View



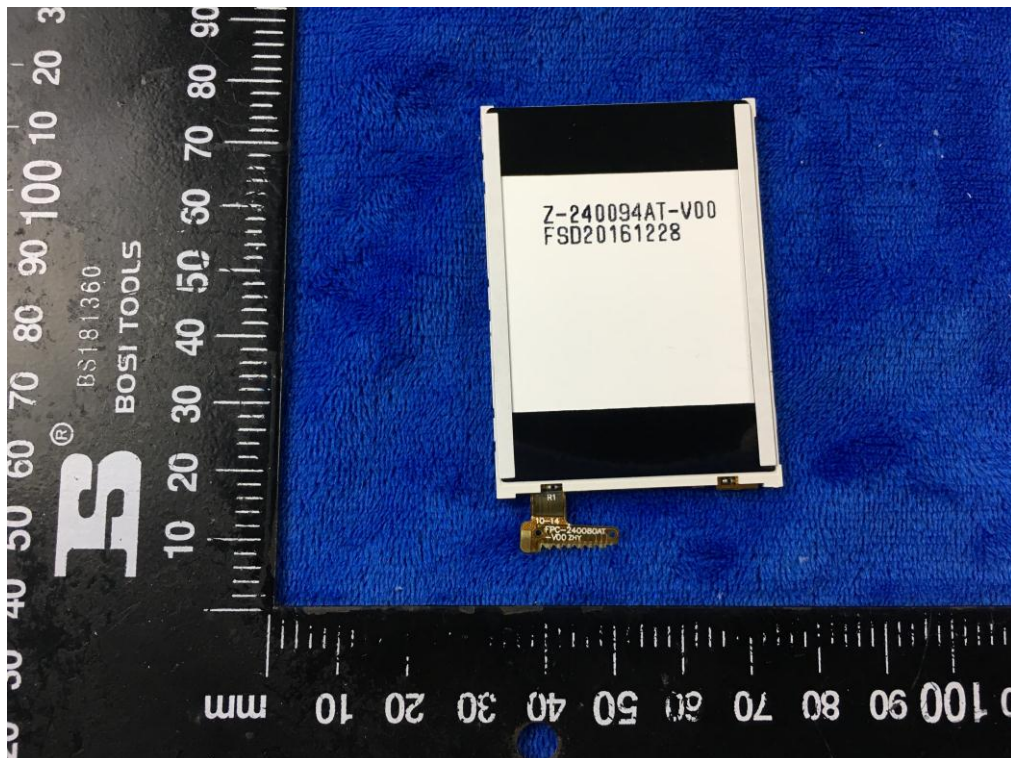
Mainboard without Shielding – Rear View



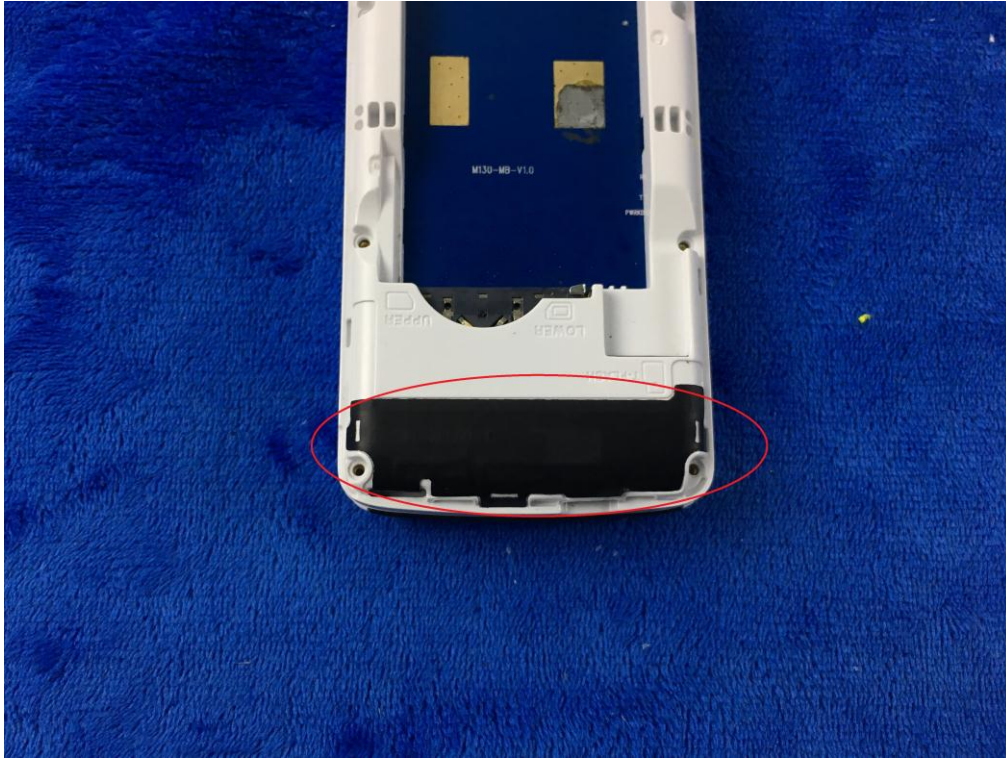
LCD – Front View



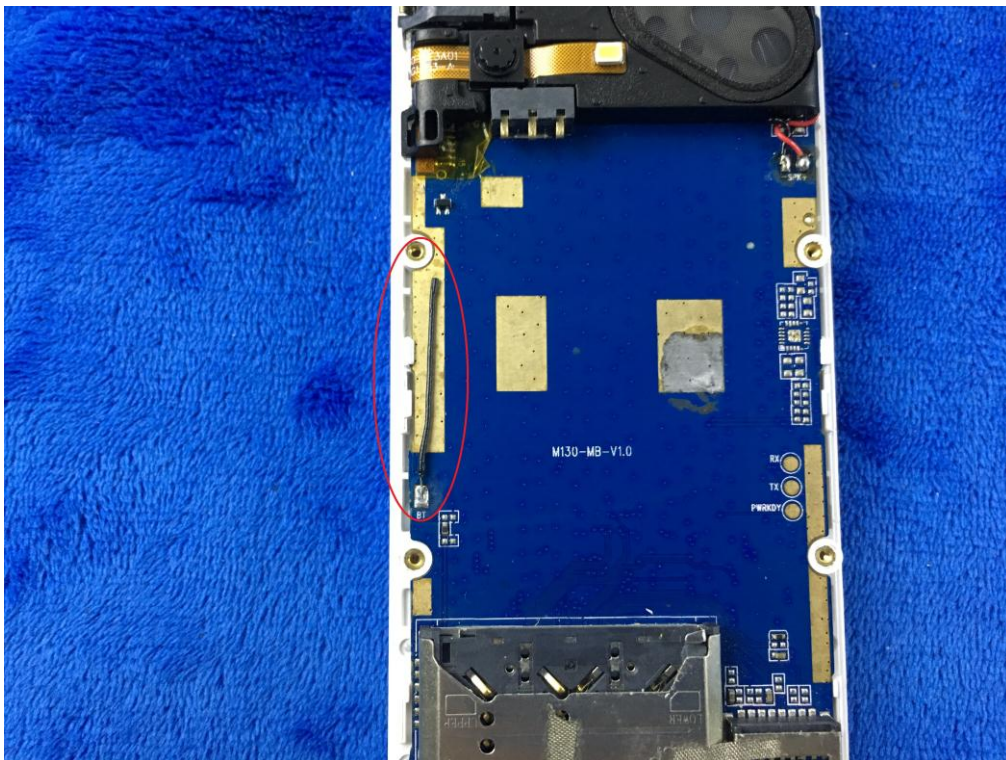
LCD – Rear View



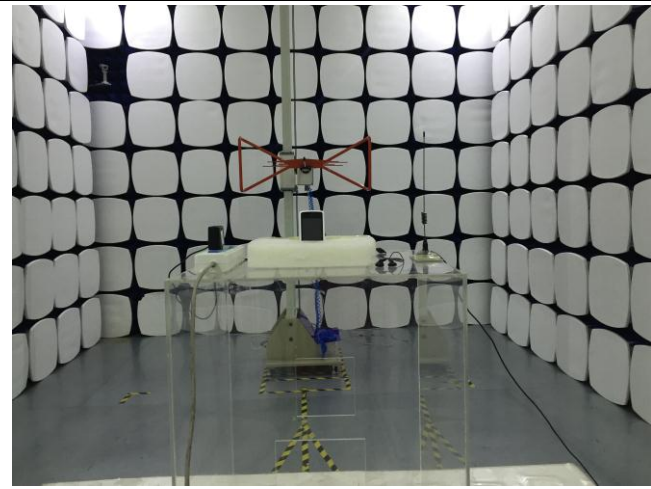
GSM/PCS Antenna View



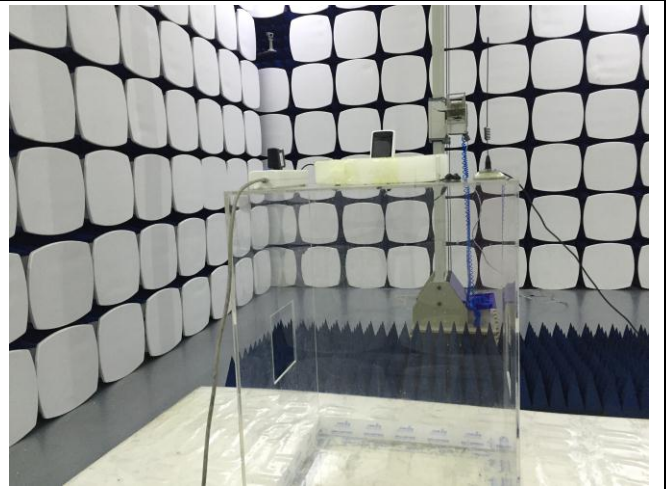
BT - Antenna View



Annex B.iii. Photograph: Test Setup Photo



Radiated Spurious Emissions Test Setup Below 1GHz

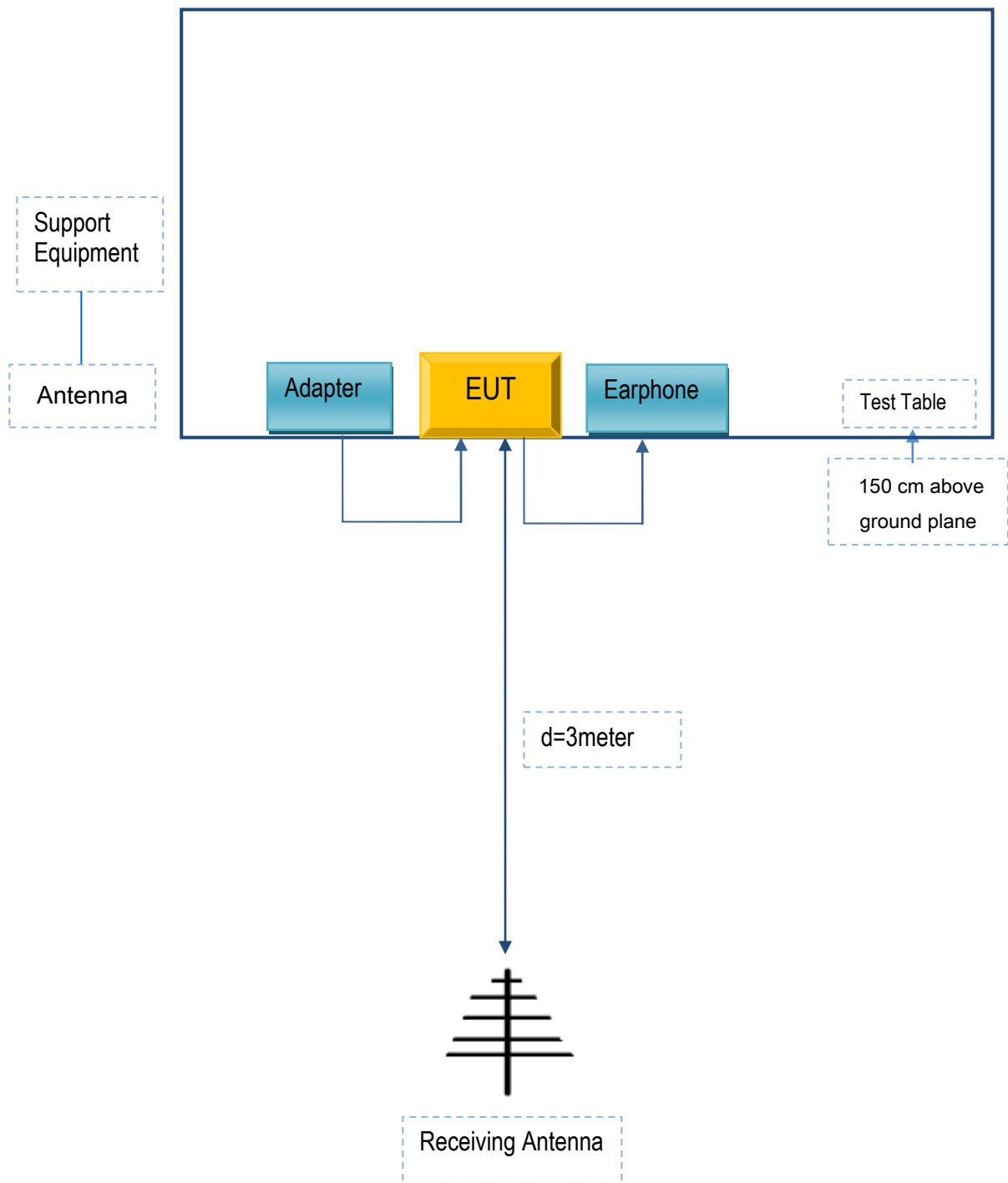


Radiated Spurious Emissions Test Setup Above 1GHz

Annex C. TEST SETUP AND SUPPORTING EQUIPMENT

Annex C.ii. TEST SET UP BLOCK

Block Configuration Diagram for Radiated Emissions



Annex C. ii. SUPPORTING EQUIPMENT DESCRIPTION

The following is a description of supporting equipment and details of cables used with the EUT.

Supporting Equipment:

Manufacturer	Equipment Description	Model	Serial No
HONG KONG IPRO TECHNOLOGY CO.,LIMITED	Adapter	EE5005-288	N/A
HONG KONG IPRO TECHNOLOGY CO.,LIMITED	Earphone	S8	N/A

Supporting Cable:

Cable type	Shield Type	Ferrite Core	Length	Serial No
USB Cable	Un-shielding	No	0.8m	N/A

Annex C.ii. EUT OPERATING CONKITIONS

N/A

Test Report	17071035-FCC-R1
Page	54 of 55

Annex D. User Manual / Block Diagram / Schematics / Partlist

Please see the attachment

Test Report	17071035-FCC-R1
Page	55 of 55

Annex E. DECLARATION OF SIMILARITY

N/A