

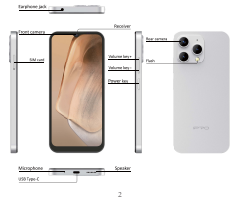


User Manual

Dear customer: Thank you for choosing this mobile phone. This mobile phone incorporates the latest world advanced functions, enabling simple and convenient operation... The mobile phone supports TF/FLASH (Memory) card and SIM standby. It integrates the following available functions: Message, MP3, MP4, Camera, FM radio, Clock, Call recording and Calendar, enabling you arranging your work, study and life freely...

Note: User's Manual is just to guide the user about the functionality of the phone. Some functions may vary due to modifications and upgrades of software or due to regional mistakes.

Overview



Keys/Touch points

- Power key/Volume Up Key: To power on it, press and hold power key for a few seconds on top of your phone. To power off it, press power key and volume up key at the same time... Home Key: To touch the key to return to the home screen. Menu Key: To enter the menu. Back Key: To go back to the previous menu. Volume Key: Press Volume up/down button to increase/decrease volume.

SIM Card Installation

- 1. Insert the card into the slot on the back of the phone. Use the card removal pin to remove the card, and insert the card into the slots of the phone after installing the SIM card. 2. To turn on/off the SIM card, go to Settings > Mobile network, then slide the SIM card status. To turn on/off a SIM card's data connection, go to Settings > Mobile network, click on the "Data connection" option, and select a SIM card that has 4G capability.

Charging battery

- 1. Calendar: Enter the calendar interface to check the year, month, date. To create new events in calendar, just press Menu button and select new event. 2. Photo: Enter the photo interface to check the year, month, date. To create new events in photo, just press Menu button and select new event. 3. Location: Enter the location interface to check the year, month, date. To create new events in location, just press Menu button and select new event. 4. Music: Enter the music interface to check the year, month, date. To create new events in music, just press Menu button and select new event.

Warning:

- Do not remove the battery while the device is charging. The battery cover will not be removed. Do not use the AC adapter or USB cable provided with your device. Note: For safety, the battery will stop charging if it is in danger of overheating.

Intelligent keyboard

From the home screen, swipe up to the home screen and select Settings. Go to "Voice" and you can manually adjust the various volume settings to change the sound configuration. For your convenience, you can also adjust the volume with the volume up and down buttons available to the Silent and Mute-on modes.

Date & time

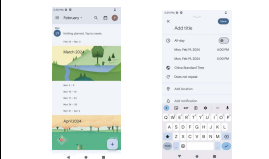
- 1. On the home screen, swipe up to the home screen and select Settings. 2. Select Settings>System>Date & time. 3. Click on the time to change the time and day for the phone to turn itself automatically.

Screen Lock

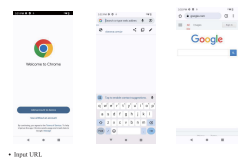
- 1. On the home screen, swipe up to the home screen and select Settings. 2. Select Security then select Screen lock. 3. Select the desired type of lock & follow the prompts to set up.

Phone Features

- 1. Calendar: Enter the calendar interface to check the year, month, date. To create new events in calendar, just press Menu button and select new event. 2. Photo: Enter the photo interface to check the year, month, date. To create new events in photo, just press Menu button and select new event. 3. Location: Enter the location interface to check the year, month, date. To create new events in location, just press Menu button and select new event. 4. Music: Enter the music interface to check the year, month, date. To create new events in music, just press Menu button and select new event.

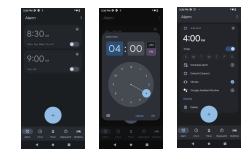


- 1. Input URL: When you enter "Chrome", you can input the webpage address on the top of the interface. Just press the top bar and input the URL, you keyboard. After that, Press the icon on keyboard to go to the webpage you just input. 2. Camera: Capture images or record videos and share with family and friends! Enter camera, touch and hold object on screen to enable object tracking. Press the camera button to take photos. Once you have finished taking a photo, you can choose to view the photo from the three shows at the right corner of the bottom of the screen. Press the video record button to change into video recording mode. Its camera zooms, it supports "Portrait, Macro, Panorama mode" function. You can also choose camera settings including Scene mode, White balance, Continuous shooting and so on. 3. Chrome: Browse the internet. In Chrome, you can input the webpage address and surf the internet. Make sure you have connected to an available Wi-Fi or internet or available SIM card which has been turned on the cellular data before you use Chrome.



- 1. Homepage: The default homepage has been set as a homepage, which means once you have started the Chrome, it will go to Chrome website automatically. If you can also set your own homepage by following steps: 1) Start Chrome>Press Menu>Go to Settings>Home page. 2) Tap the "Home page">Set the home page to the 3) Tap the new website address you want to set as a homepage, make the option "Default" checked and go back. You will find the home page has already been changed. 4) If you want to set the homepage back to Google, just make the option "Default" checked, then the homepage will be back to Google. Whenever you want to go back to homepage when surfing the internet, just press the icon on the top bar, it will go to the homepage automatically. 2. Bookmarks: How to set the webpage as the bookmark? Just do as follows: 1) When staying on a webpage interface, just press Menu key->Tap the icon. 2) You will see a new interface displayed "Add bookmark", press "Save", then the webpage has been set as a bookmark.

If you want to use all your bookmarks when staying on a webpage interface, just tap the Menu key and select "Bookmarks". You will see all the bookmarks in a list. Tap each bookmark, you can go to the website. Press each bookmark menu key, you can choose to "Edit bookmark" or "Delete bookmark" and so on. History: When you surf the internet, just press Menu key and select "History", you can view all the websites you have opened before.



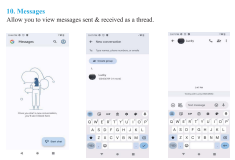
- 1. FM Radio: To use FM Radio, you must insert an available compass. Press previous/Next button to change to play different channels. Press the red button from interface to start or stop FM Radio. 2. Clock: Allow you to set the Alarm Clock. Touch the icon of "+" to add a new alarm clock. First on the clock time. Then you can Check/Uncheck the "Repeat" or "Vibrate". Choose different ringtone for alarm from "Custom". If you want to add link to the alarm clock, just select from "Label" to input content. When the alarm clock is going off, you can select "Silence" or "Dismiss" from the interface. 3. File Manager: In context, you can select the storage location SD or phone, input the content information like Name, Phone number, Email, Street, Company, Note and so on. Press save key to save the content. You can view, edit, delete, send messages and perform various other functions with all the content you have saved in context. 4. Files: In main menu, please press the File manager icon to enter the module. It is used to manage the files, including pictures, videos, audio and so on. There is no space in the phone, and the space will be enlarged by the recovery card. 5. Contacts: In context, you can select the storage location SD or phone, input the contact information like Name, Phone number, Email, Street, Company, Note and so on. Press save key to save the content. You can view, edit, delete, send messages and perform various other functions with all the content you have saved in context. 6. Files: In main menu, please press the File manager icon to enter the module. It is used to manage the files, including pictures, videos, audio and so on. There is no space in the phone, and the space will be enlarged by the recovery card.



- 1. FM Radio: To use FM Radio, you must insert an available compass. Press previous/Next button to change to play different channels. Press the red button from interface to start or stop FM Radio. 2. Clock: Allow you to set the Alarm Clock. Touch the icon of "+" to add a new alarm clock. First on the clock time. Then you can Check/Uncheck the "Repeat" or "Vibrate". Choose different ringtone for alarm from "Custom". If you want to add link to the alarm clock, just select from "Label" to input content. When the alarm clock is going off, you can select "Silence" or "Dismiss" from the interface. 3. File Manager: In context, you can select the storage location SD or phone, input the content information like Name, Phone number, Email, Street, Company, Note and so on. Press save key to save the content. You can view, edit, delete, send messages and perform various other functions with all the content you have saved in context. 4. Files: In main menu, please press the File manager icon to enter the module. It is used to manage the files, including pictures, videos, audio and so on. There is no space in the phone, and the space will be enlarged by the recovery card. 5. Contacts: In context, you can select the storage location SD or phone, input the contact information like Name, Phone number, Email, Street, Company, Note and so on. Press save key to save the content. You can view, edit, delete, send messages and perform various other functions with all the content you have saved in context. 6. Files: In main menu, please press the File manager icon to enter the module. It is used to manage the files, including pictures, videos, audio and so on. There is no space in the phone, and the space will be enlarged by the recovery card.



- 1. Homepage: The default homepage has been set as a homepage, which means once you have started the Chrome, it will go to Chrome website automatically. If you can also set your own homepage by following steps: 1) Start Chrome>Press Menu>Go to Settings>Home page. 2) Tap the "Home page">Set the home page to the 3) Tap the new website address you want to set as a homepage, make the option "Default" checked and go back. You will find the home page has already been changed. 4) If you want to set the homepage back to Google, just make the option "Default" checked, then the homepage will be back to Google. Whenever you want to go back to homepage when surfing the internet, just press the icon on the top bar, it will go to the homepage automatically.

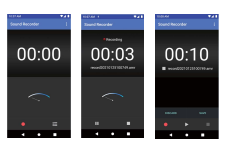


- 1. Homepage: The default homepage has been set as a homepage, which means once you have started the Chrome, it will go to Chrome website automatically. If you can also set your own homepage by following steps: 1) Start Chrome>Press Menu>Go to Settings>Home page. 2) Tap the "Home page">Set the home page to the 3) Tap the new website address you want to set as a homepage, make the option "Default" checked and go back. You will find the home page has already been changed. 4) If you want to set the homepage back to Google, just make the option "Default" checked, then the homepage will be back to Google. Whenever you want to go back to homepage when surfing the internet, just press the icon on the top bar, it will go to the homepage automatically.

1. Homepage: The default homepage has been set as a homepage, which means once you have started the Chrome, it will go to Chrome website automatically. If you can also set your own homepage by following steps: 1) Start Chrome>Press Menu>Go to Settings>Home page. 2) Tap the "Home page">Set the home page to the 3) Tap the new website address you want to set as a homepage, make the option "Default" checked and go back. You will find the home page has already been changed. 4) If you want to set the homepage back to Google, just make the option "Default" checked, then the homepage will be back to Google. Whenever you want to go back to homepage when surfing the internet, just press the icon on the top bar, it will go to the homepage automatically.

1. Homepage: The default homepage has been set as a homepage, which means once you have started the Chrome, it will go to Chrome website automatically. If you can also set your own homepage by following steps: 1) Start Chrome>Press Menu>Go to Settings>Home page. 2) Tap the "Home page">Set the home page to the 3) Tap the new website address you want to set as a homepage, make the option "Default" checked and go back. You will find the home page has already been changed. 4) If you want to set the homepage back to Google, just make the option "Default" checked, then the homepage will be back to Google. Whenever you want to go back to homepage when surfing the internet, just press the icon on the top bar, it will go to the homepage automatically.

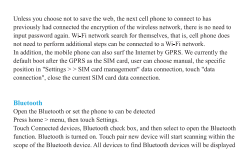
1. Homepage: The default homepage has been set as a homepage, which means once you have started the Chrome, it will go to Chrome website automatically. If you can also set your own homepage by following steps: 1) Start Chrome>Press Menu>Go to Settings>Home page. 2) Tap the "Home page">Set the home page to the 3) Tap the new website address you want to set as a homepage, make the option "Default" checked and go back. You will find the home page has already been changed. 4) If you want to set the homepage back to Google, just make the option "Default" checked, then the homepage will be back to Google. Whenever you want to go back to homepage when surfing the internet, just press the icon on the top bar, it will go to the homepage automatically.



- 1. Homepage: The default homepage has been set as a homepage, which means once you have started the Chrome, it will go to Chrome website automatically. If you can also set your own homepage by following steps: 1) Start Chrome>Press Menu>Go to Settings>Home page. 2) Tap the "Home page">Set the home page to the 3) Tap the new website address you want to set as a homepage, make the option "Default" checked and go back. You will find the home page has already been changed. 4) If you want to set the homepage back to Google, just make the option "Default" checked, then the homepage will be back to Google. Whenever you want to go back to homepage when surfing the internet, just press the icon on the top bar, it will go to the homepage automatically.



- 1. Homepage: The default homepage has been set as a homepage, which means once you have started the Chrome, it will go to Chrome website automatically. If you can also set your own homepage by following steps: 1) Start Chrome>Press Menu>Go to Settings>Home page. 2) Tap the "Home page">Set the home page to the 3) Tap the new website address you want to set as a homepage, make the option "Default" checked and go back. You will find the home page has already been changed. 4) If you want to set the homepage back to Google, just make the option "Default" checked, then the homepage will be back to Google. Whenever you want to go back to homepage when surfing the internet, just press the icon on the top bar, it will go to the homepage automatically.



- 1. Homepage: The default homepage has been set as a homepage, which means once you have started the Chrome, it will go to Chrome website automatically. If you can also set your own homepage by following steps: 1) Start Chrome>Press Menu>Go to Settings>Home page. 2) Tap the "Home page">Set the home page to the 3) Tap the new website address you want to set as a homepage, make the option "Default" checked and go back. You will find the home page has already been changed. 4) If you want to set the homepage back to Google, just make the option "Default" checked, then the homepage will be back to Google. Whenever you want to go back to homepage when surfing the internet, just press the icon on the top bar, it will go to the homepage automatically.

1. Homepage: The default homepage has been set as a homepage, which means once you have started the Chrome, it will go to Chrome website automatically. If you can also set your own homepage by following steps: 1) Start Chrome>Press Menu>Go to Settings>Home page. 2) Tap the "Home page">Set the home page to the 3) Tap the new website address you want to set as a homepage, make the option "Default" checked and go back. You will find the home page has already been changed. 4) If you want to set the homepage back to Google, just make the option "Default" checked, then the homepage will be back to Google. Whenever you want to go back to homepage when surfing the internet, just press the icon on the top bar, it will go to the homepage automatically.

1. Homepage: The default homepage has been set as a homepage, which means once you have started the Chrome, it will go to Chrome website automatically. If you can also set your own homepage by following steps: 1) Start Chrome>Press Menu>Go to Settings>Home page. 2) Tap the "Home page">Set the home page to the 3) Tap the new website address you want to set as a homepage, make the option "Default" checked and go back. You will find the home page has already been changed. 4) If you want to set the homepage back to Google, just make the option "Default" checked, then the homepage will be back to Google. Whenever you want to go back to homepage when surfing the internet, just press the icon on the top bar, it will go to the homepage automatically.

1. Homepage: The default homepage has been set as a homepage, which means once you have started the Chrome, it will go to Chrome website automatically. If you can also set your own homepage by following steps: 1) Start Chrome>Press Menu>Go to Settings>Home page. 2) Tap the "Home page">Set the home page to the 3) Tap the new website address you want to set as a homepage, make the option "Default" checked and go back. You will find the home page has already been changed. 4) If you want to set the homepage back to Google, just make the option "Default" checked, then the homepage will be back to Google. Whenever you want to go back to homepage when surfing the internet, just press the icon on the top bar, it will go to the homepage automatically.

1. Homepage: The default homepage has been set as a homepage, which means once you have started the Chrome, it will go to Chrome website automatically. If you can also set your own homepage by following steps: 1) Start Chrome>Press Menu>Go to Settings>Home page. 2) Tap the "Home page">Set the home page to the 3) Tap the new website address you want to set as a homepage, make the option "Default" checked and go back. You will find the home page has already been changed. 4) If you want to set the homepage back to Google, just make the option "Default" checked, then the homepage will be back to Google. Whenever you want to go back to homepage when surfing the internet, just press the icon on the top bar, it will go to the homepage automatically.

1. Homepage: The default homepage has been set as a homepage, which means once you have started the Chrome, it will go to Chrome website automatically. If you can also set your own homepage by following steps: 1) Start Chrome>Press Menu>Go to Settings>Home page. 2) Tap the "Home page">Set the home page to the 3) Tap the new website address you want to set as a homepage, make the option "Default" checked and go back. You will find the home page has already been changed. 4) If you want to set the homepage back to Google, just make the option "Default" checked, then the homepage will be back to Google. Whenever you want to go back to homepage when surfing the internet, just press the icon on the top bar, it will go to the homepage automatically.

1. Homepage: The default homepage has been set as a homepage, which means once you have started the Chrome, it will go to Chrome website automatically. If you can also set your own homepage by following steps: 1) Start Chrome>Press Menu>Go to Settings>Home page. 2) Tap the "Home page">Set the home page to the 3) Tap the new website address you want to set as a homepage, make the option "Default" checked and go back. You will find the home page has already been changed. 4) If you want to set the homepage back to Google, just make the option "Default" checked, then the homepage will be back to Google. Whenever you want to go back to homepage when surfing the internet, just press the icon on the top bar, it will go to the homepage automatically.