

Acer ICONIA TAB

User Guide

Product registration

When using your product for the first time, it is recommended that you immediately register it. This will give you access to some useful benefits, such as:

- Faster service from our trained representatives.
- Membership in the Acer community: receive promotions and participate in customer surveys.
- The latest news from Acer.

Hurry and register, as other advantages await you!

How to register

To register your Acer product, please visit **www.acer.com**. Select your country, click **PRODUCT REGISTRATION** and follow the simple instructions.

You will also be asked to register your product during the setup process, or you can double-click the Registration icon on the desktop.

After we receive your product registration, you will be sent a confirmation email with important data that you should keep in a safe place.

Obtaining Acer accessories

We are happy to inform you that Acer's warranty extension program and computer accessories are available online. Come and visit our online shop and find what you need at **store.acer.com**.

The Acer store is being progressively rolled out, and, unfortunately may not be available in some regions. Please check back regularly to see when it will be available in your country.

© 2012. All Rights Reserved.

Acer ICONIA TAB User Guide

Original Issue: 02/2012

Model number: _____

Serial number: _____

Date of purchase: _____

Place of purchase: _____

Acer recommends...

Productivity Software

Work Great with Microsoft® Office 2010 - Express your ideas, solve problems and simplify everyday projects with Office 2010.

Photo editing - Easily edit and print your photos with Windows Live Photo Gallery. Then share them on Facebook, YouTube or Windows Live.

Search & Decide with Bing - Find and organize the answers you need using Bing™, so you can make faster, more informed decisions.

First things first

We would like to thank you for making an Acer computer your choice for meeting your mobile computing needs.

Your guides

To help you use your Acer computer, we have designed a set of guides:

First off, the **setup poster** helps you get started with setting up your computer.

The **ICONIA TAB User Guide** contains useful information applying to all models in the ICONIA TAB product series. It covers basic topics such as using the keyboard and audio, etc.

The **Quick Guide** introduces you to the basic features and functions of your new computer. For more on how your computer can help you to be more productive, please refer to the **ICONIA TAB User Guide**. This guide contains detailed information on such subjects as system utilities, data recovery, expansion options and troubleshooting. In addition it contains warranty information and the general regulations and safety notices for your computer. It is available in Portable Document Format (PDF) and comes preloaded on your computer. Follow these steps to access it:

- 1 Click on  **Start > All Programs > Documentation**.
- 2 Click on **ICONIA TAB User Guide**.



.....

Note: Viewing the file requires Adobe Reader. If Adobe Reader is not installed on your computer, clicking on the user guide link will run the Adobe Reader setup program first. Follow the instructions on the screen to complete the installation. For instructions on how to use Adobe Reader, please refer to the **Help and Support** menu.

Warranty information is included on a separate leaflet in the documentation pack included with your computer, and is specific to your home region. Your **International Travelers Warranty** booklet gives you information that is essential for obtaining technical support when traveling outside of your home country.

Basic care and tips for using your computer

Turning your computer on and off

To turn on the computer, simply press and release the power button in the right-hand hinge. Please refer to the **setup poster** for the location of the power button.

To turn the power off, do any of the following:

- Use the Windows shutdown command
Click on **Start** then click on **Shut Down**.

- Use the power button



Note: If you cannot power off the computer normally, press and hold the power button for more than four seconds to shut down the computer. If you turn off the computer and want to turn it on again, wait at least two seconds before powering up.

Taking care of your computer

Your computer will serve you well if you take care of it.

- Do not expose the computer to direct sunlight. Do not place it near sources of heat, such as a radiator.
- Do not expose the computer to temperatures below 0° C (32° F) or above 50° C (122° F).
- Do not subject the computer to magnetic fields.
- Do not expose the computer to rain or moisture.
- Do not spill water or any liquid on the computer.
- Do not subject the computer to heavy shock or vibration.
- Do not expose the computer to dust or dirt.
- Never place objects on top of the computer.
- Do not slam the computer display when you close it.
- Never place the computer on uneven surfaces.

Taking care of your AC adapter

Here are some ways to take care of your AC adapter:

- Do not connect the adapter to any other device.
- Do not step on the power cord or place heavy objects on top of it. Carefully route the power cord and any cables away from foot traffic.
- When unplugging the power cord, do not pull on the cord itself but pull on the plug.
- The total ampere ratings of the equipment plugged in should not exceed the ampere rating of the cord if you are using an extension cord. Also, the total current rating of all equipment plugged into a single wall outlet should not exceed the fuse rating.

Cleaning and servicing

When cleaning the computer, follow these steps:

- 1 Turn off the computer and remove the battery pack.
- 2 Disconnect the AC adapter.
- 3 Use a soft, moist cloth. Do not use liquid or aerosol cleaners.

If either of the following occurs:

- the computer has been dropped or the body has been damaged;
- the computer does not operate normally

Please refer to "**Frequently asked questions**" on page 36.

Information for your safety and comfort

Safety instructions

Read these instructions carefully. Keep this document for future reference. Follow all warnings and instructions marked on the product.

Turning the product off before cleaning

Unplug this product from the wall outlet before cleaning. Do not use liquid cleaners or aerosol cleaners. Use a damp cloth for cleaning.

Warnings

Accessing the power cord

Be sure that the power outlet you plug the power cord into is easily accessible and located as close to the equipment operator as possible. When you need to disconnect power to the equipment, be sure to unplug the power cord from the electrical outlet.

Disconnecting the power source

Observe the following guidelines when connecting and disconnecting power to the power supply unit:

Install the power supply unit before connecting the power cord to the AC power outlet.

Unplug the power cord before removing the power supply unit from the computer.

If the system has multiple sources of power, disconnect power from the system by unplugging all power cords from the power supplies.

Using electrical power

- This product should be operated from the type of power indicated on the marking label. If you are not sure of the type of power available, consult your dealer or local power company.
- Do not allow anything to rest on the power cord. Do not locate this product where people will walk on the cord.
- If an extension cord is used with this product, make sure that the total ampere rating of the equipment plugged into the extension cord does not exceed the extension cord ampere rating. Also, make sure that the total rating of all products plugged into the wall outlet does not exceed the fuse rating.
- Do not overload a power outlet, strip or receptacle by plugging in too many devices. The overall system load must not exceed 80% of the branch circuit rating. If power strips are used, the load should not exceed 80% of the power

strip's input rating.

- This product's AC adapter is equipped with a three-wire grounded plug. The plug only fits in a grounded power outlet. Make sure the power outlet is properly grounded before inserting the AC adapter plug. Do not insert the plug into a non-grounded power outlet. Contact your electrician for details.



.....

Warning! The grounding pin is a safety feature. Using a power outlet that is not properly grounded may result in electric shock and/or injury.



.....

Note: The grounding pin also provides good protection from unexpected noise produced by other nearby electrical devices that may interfere with the performance of this product.

- The system can be powered using a wide range of voltages; 100 to 120 or 220 to 240 V AC. The power cord included with the system meets the requirements for use in the country/region where the system was purchased. Power cords for use in other countries/regions must meet the requirements for that country/region. For more information on power cord requirements, contact an authorized reseller or service provider.

Protecting your hearing



.....

Warning: Permanent hearing loss may occur if earphones or headphones are used at high volume for prolonged periods of time.



To protect your hearing, follow these instructions.

- Increase the volume gradually until you can hear clearly and comfortably.
- Do not increase the volume level after your ears have adjusted.
- Do not listen to music at high volumes for extended periods.
- Do not increase the volume to block out noisy surroundings.
- Decrease the volume if you can't hear people speaking near you.

General

- Do not use this product near water.
- Do not place this product on an unstable cart, stand or table. If the product falls, it could be seriously damaged.
- Slots and openings are provided for ventilation to ensure reliable operation of the product and to protect it from overheating. These openings must not be blocked or covered. The openings should never be blocked by placing the product on a bed, sofa, rug or other similar surface. This product should never

be placed near or over a radiator or heat register, or in a built-in installation unless proper ventilation is provided.

- Never push objects of any kind into this product through cabinet slots as they may touch dangerous voltage points or short-out parts that could result in a fire or electric shock. Never spill liquid of any kind onto or into the product.
- To avoid damage of internal components and to prevent battery leakage, do not place the product on a vibrating surface.
- Never use it under sporting, exercising, or any vibrating environment which will probably cause unexpected short current or damage rotor devices, HDD, Optical drive, and even exposure risk from lithium battery pack.
- The bottom surface, areas around ventilation openings and AC adapter may get hot. To avoid injury, ensure they do not come in contact with your skin or body.
- Your device and its enhancements may contain small parts. Keep them out of the reach of small children.

Product servicing

Do not attempt to service this product yourself, as opening or removing covers may expose you to dangerous voltage points or other risks. Refer all servicing to qualified service personnel.

Unplug this product from the wall outlet and refer servicing to qualified service personnel when:

- The power cord or plug is damaged, cut or frayed.
- Liquid was spilled into the product.
- The product was exposed to rain or water.
- The product has been dropped or the case has been damaged.
- The product exhibits a distinct change in performance, indicating a need for service.
- The product does not operate normally after following the operating instructions.



.....

Note: Adjust only those controls that are covered by the operating instructions, since improper adjustment of other controls may result in damage and will often require extensive work by a qualified technician to restore the product to normal condition.

Guidelines for safe battery usage

This computer uses a Lithium-ion battery. Do not use it in a humid, wet or corrosive environment. Do not put, store or leave your product in or near a heat source, in a high temperature location, in strong direct sunlight, in a microwave oven or in a pressurized container, and do not expose it to temperatures over 60° C (140° F). Failure to follow these guidelines may cause the battery to leak acid, become hot, explode or ignite and cause injury and/or damage. Do not pierce, open or

disassemble the battery. If the battery leaks and you come into contact with the leaked fluids, rinse thoroughly with water and seek medical attention immediately. For safety reasons, and to prolong the lifetime of the battery, charging will not occur at temperatures below 0° C (32° F) or above 40° C (104° F).

The full performance of a new battery is achieved only after two or three complete charge and discharge cycles. The battery can be charged and discharged many times, but it will eventually wear out. When the normal use and standby times are noticeably shorter than normal, contact your reseller. Use only Acer approved batteries, and recharge your battery only with Acer approved chargers designated for this device.

Use the battery only for its intended purpose. Never use any charger or battery that is damaged. Do not short-circuit the battery. Accidental short-circuiting can occur when a metallic object such as a coin, clip or pen causes direct connection of the positive (+) and negative (-) terminals of the battery. (These look like metal strips on the battery.) This might happen, for example, when you carry a spare battery in your pocket or purse. Short-circuiting the terminals may damage the battery or the connecting object.

The capacity and lifetime of the battery will be reduced if the battery is left in hot or cold places, such as in a closed car in summer or winter. Always try to keep the battery between 15° C and 25° C (59° F and 77° F). A device with a hot or cold battery may not work temporarily, even when the battery is fully charged. Battery performance is especially limited in temperatures well below freezing.

Do not dispose of batteries in a fire as they may explode. Batteries may also explode if damaged. Dispose of batteries according to local regulations. Please recycle when possible. Do not dispose as household waste.

Wireless devices may be susceptible to interference from the battery, which could affect performance.



.....
Note: Please refer to www.acer.com for battery shipping documents.

Replacing the battery pack

The computer uses Lithium-ion batteries. Replace the battery with the same type as that which came bundled with your product. Use of another battery may present a risk of fire or explosion.



.....
Warning! Batteries may explode if not handled properly. Do not disassemble or dispose of them in fire. Keep them away from children. Follow local regulations when disposing of used batteries.

Radio frequency interference



Warning! For safety reasons, turn off all wireless or radio transmitting devices when using your computer under the following conditions. These devices may include, but are not limited to: wireless lan (WLAN), Bluetooth and/or 3G.

Remember to follow any special regulations in force in any area, and always switch off your device when its use is prohibited or when it may cause interference or danger. Use the device only in its normal operating positions. This device meets RF exposure guidelines when used normally, and it and its antenna are positioned at least 1.5 centimeters (5/8 inches) away from your body (refer to the figure below). It should not contain metal and you should position the device the above-stated distance from your body. To successfully transmit data files or messages, this device requires a good quality connection to the network. In some cases, transmission of data files or messages may be delayed until such a connection is available. Ensure that the above separation distance instructions are followed until the transmission is completed. Parts of the device are magnetic. Metallic materials may be attracted to the device, and persons with hearing aids should not hold the device to the ear with the hearing aid. Do not place credit cards or other magnetic storage media near the device, because information stored on them may be erased.

Medical devices

Operation of any radio transmitting equipment, including wireless phones, may interfere with the functionality of inadequately protected medical devices. Consult a physician or the manufacturer of the medical device to determine if they are adequately shielded from external RF energy or if you have any questions. Switch off your device in health care facilities when any regulations posted in these areas instruct you to do so. Hospitals or health care facilities may be using equipment that could be sensitive to external RF transmissions.

Pacemakers. Pacemaker manufacturers recommend that a minimum separation of 15.3 centimeters (6 inches) be maintained between wireless devices and a pacemaker to avoid potential interference with the pacemaker. These recommendations are consistent with the independent research by and recommendations of Wireless Technology Research. Persons with pacemakers should do the following:

- Always keep the device more than 15.3 centimeters (6 inches) from the pacemaker
- Not carry the device near your pacemaker when the device is switched on. If you suspect interference, switch off your device, and move it.

Hearing aids. Some digital wireless devices may interfere with some hearing aids. If interference occurs, consult your service provider.

Vehicles

RF signals may affect improperly installed or inadequately shielded electronic systems in motor vehicles such as electronic fuel injection systems, electronic

antiskid (antilock) braking systems, electronic speed control systems, and air bag systems. For more information, check with the manufacturer, or its representative, of your vehicle or any equipment that has been added. Only qualified personnel should service the device, or install the device in a vehicle. Faulty installation or service may be dangerous and may invalidate any warranty that may apply to the device. Check regularly that all wireless equipment in your vehicle is mounted and operating properly. Do not store or carry flammable liquids, gases, or explosive materials in the same compartment as the device, its parts, or enhancements. For vehicles equipped with an air bag, remember that air bags inflate with great force. Do not place objects, including installed or portable wireless equipment in the area over the air bag or in the air bag deployment area. If in-vehicle wireless equipment is improperly installed, and the air bag inflates, serious injury could result. Using your device while flying in aircraft is prohibited. Switch off your device before boarding an aircraft. The use of wireless teledevices in an aircraft may be dangerous to the operation of the aircraft, disrupt the wireless telephone network, and may be illegal.

Potentially explosive environments

Switch off your device when in any area with a potentially explosive atmosphere and obey all signs and instructions. Potentially explosive atmospheres include areas where you would normally be advised to turn off your vehicle engine. Sparks in such areas could cause an explosion or fire resulting in bodily injury or even death. Switch off the device at refueling points such as near gas pumps at service stations. Observe restrictions on the use of radio equipment in fuel depots, storage, and distribution areas; chemical plants; or where blasting operations are in progress. Areas with a potentially explosive atmosphere are often, but not always, clearly marked. They include below deck on boats, chemical transfer or storage facilities, vehicles using liquefied petroleum gas (such as propane or butane), and areas where the air contains chemicals or particles such as grain, dust or metal powders. Do not switch the computer on when wireless phone use is prohibited or when it may cause interference or danger.

Emergency calls



.....

**Warning: You cannot make emergency calls through this device.
To make an emergency call you shall dial out through your
mobile phone or other telephone call system.**

Disposal instructions

Do not throw this electronic device into the trash when discarding. To minimize pollution and ensure utmost protection of the global environment, please recycle. For more information on the Waste from Electrical and Electronics Equipment (WEEE) regulations, visit www.acer-group.com/public/Sustainability/sustainability01.htm



Tips and information for comfortable use

Computer users may complain of eyestrain and headaches after prolonged use. Users are also at risk of physical injury after long hours of working in front of a computer. Long work periods, bad posture, poor work habits, stress, inadequate working conditions, personal health and other factors greatly increase the risk of physical injury.

Incorrect computer usage may lead to carpal tunnel syndrome, tendonitis, tenosynovitis or other musculoskeletal disorders. The following symptoms may appear in the hands, wrists, arms, shoulders, neck or back:

- Numbness, or a burning or tingling sensation.
- Aching, soreness or tenderness.
- Pain, swelling or throbbing.
- Stiffness or tightness.
- Coldness or weakness.

If you have these symptoms, or any other recurring or persistent discomfort and/or pain related to computer use, consult a physician immediately and inform your company's health and safety department.

The following section provides tips for more comfortable computer use.

Finding your comfort zone

Find your comfort zone by adjusting the viewing angle of the monitor, using a footrest, or raising your sitting height to achieve maximum comfort. Observe the following tips:

- Refrain from staying too long in one fixed posture.
- Avoid slouching forward and/or leaning backward.
- Stand up and walk around regularly to remove the strain on your leg muscles.
- Take short rests to relax your neck and shoulders.
- Avoid tensing your muscles or shrugging your shoulders.
- Install the external display, keyboard and mouse properly and within comfortable reach.
- If you view your monitor more than your documents, place the display at the center of your desk to minimize neck strain.

Taking care of your vision

Long viewing hours, wearing incorrect glasses or contact lenses, glare, excessive room lighting, poorly focused screens, very small typefaces and low-contrast displays could stress your eyes. You can reduce eyestrain by doing the following.

- Rest your eyes frequently.
- Give your eyes regular breaks by looking away from the monitor and focusing on a distant point.
- Blink frequently to keep your eyes from drying out.
- Keep your display clean.

- Keep your head at a higher level than the top edge of the display so your eyes point downward when looking at the middle of the display.
- Adjust the display brightness and/or contrast to a comfortable level for enhanced text readability and graphics clarity.
- Eliminate glare and reflections by:
 - Placing your display in such a way that the side faces the window or any light source.
 - Minimizing room light by using drapes, shades or blinds.
 - Using a task light.
 - Changing the display's viewing angle.
 - Using a glare-reduction filter.
 - Using a display visor, such as a piece of cardboard extended from the display's top front edge.
- Avoid adjusting your display to an awkward viewing angle.
- Avoid looking at bright light sources, such as open windows, for extended periods of time.

Developing good work habits

Good work habits can make your computer use more relaxing and productive:

- Take short breaks regularly and often.
- Perform some stretching exercises.
- Breathe fresh air as often as possible.
- Exercise regularly and maintain a healthy body.



.....

Warning! We do not recommend using the computer on a couch or bed. If this is unavoidable, work for only short periods, take breaks regularly, and do some stretching exercises.



.....

Note: For more information, please refer to "**Regulations and safety notices**" on page 40.

Product registration	i
How to register	i
Obtaining Acer accessories	i
First things first	iii
Your guides	iii
Basic care and tips for using your computer	iii
Turning your computer on and off	iii
Taking care of your computer	iv
Taking care of your AC adapter	iv
Cleaning and servicing	v
Information for your safety and comfort	vi
Safety instructions	vi
Warnings	vi
Radio frequency interference	x
Medical devices	x
Vehicles	x
Potentially explosive environments	xi
Emergency calls	xi
Disposal instructions	xi
Tips and information for comfortable use	xii
Your Acer tablet PC tour	1
Tablet PC	1
Front view	1
Back view	2
Top view	3
Bottom view	3
Left view	4
Right view	4
Booting your tablet	5
Key functions for boot menus	5
Connect the tablet to the keyboard dock	5
Secure the tablet to the keyboard dock	6
Keyboard dock	6
Top view	6
Front view	7
Left view	7
Right view	8
Environment	8
Acer Ring	9
Sync function	10
Clean Disk function	10
TouchBrowser	11
Adding a page to your Favorites	13
My Journal	14
Editing pages	15

Contents

Web Clip	15
Acer clear.fi	18
Media content types	18
DMS (Digital Media Server) devices	18
Display media content	18
Save media content	19
Search media	19
Media sharing settings	19
Device Control	20
Using the virtual keyboard	22
SocialJogger	23
Sharing content	26
Settings	26
Acer Backup Manager	27
Power management	29
Recovering your system	29
Battery pack	30
Battery pack characteristics	30
Maximizing the battery's life	30
Charging the battery	31
Checking the battery level	31
Battery low warning	31
Expanding through options	33
Connectivity options	33
Network feature	33
Universal Serial Bus (USB)	34
High-Definition Multimedia Interface	34
BIOS utility	35
Boot sequence	35
Frequently asked questions	36
Requesting service	37
Locating the Microsoft Certificate of Authenticity	37
International Travelers Warranty	37
Before you call	38
Troubleshooting	39
Troubleshooting tips	39
Regulations and safety notices	40
FCC statement	40
LCD pixel statement	41
Radio device regulatory notice	41
General	41
Wireless operation channels for different domains	42
France: Restricted wireless frequency bands	42
List of National Codes	43

The FCC RF safety requirement	43
Canada — Low-power license-exempt radio communication devices (RSS-210)	44
Exposure of humans to RF fields (RSS-102)	44

Your Acer tablet PC tour

After setting up your computer as illustrated in the setup poster, let us show you around your new Acer computer.

You can enter information into your new computer via the touchscreen or with the keyboard dock.



Note: The keyboard dock is optional.

Tablet PC

Your new computer has two components, the tablet and the keyboard dock. The following set of images will show you the Tablet PC. The views are labeled as if you are holding the Tablet with the screen towards you and the cameras at the top.

Front view



No.	Item	Description
1	Latch	Secures the tablet to the keyboard dock when closed.
2	Microphones	Two internal microphones for stereo sound recording.
3	Integrated webcam	Web camera for video communication.

No.	Item	Description
4	Windows key / power status indicator	Press once to open the Start menu or wake tablet from Sleep mode. Press the power button while holding the Windows key to perform the <Ctrl> + <Alt> + function (this is referred to as the "Windows Security Button" in the operating system).

Status indicator color	Power status
Blue	System turned on.
Slow flash: Orange	System in Standby mode.
Flashing: Orange	System entering Hibernate mode.
Off	System in Hibernate mode or turned off.

Back view



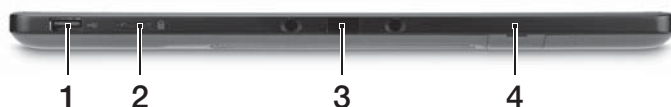
No.	Item	Description
1	Integrated webcam	Web camera for video communication.
2	SIM card slot	Accepts a 3G SIM card (configuration may vary depending on model).
3	Speaker	Delivers audio output.


Top view



No.	Item	Description
1	Ventilation slot	Provides adequate air flow to maintain a safe operating temperature.

Bottom view



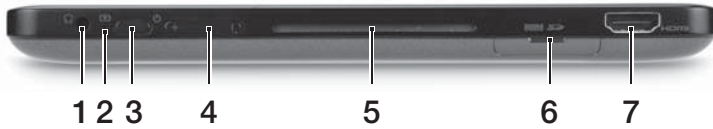
No.	Icon	Item	Description
1		USB 2.0 port	Connect to USB 2.0 devices (e.g., USB mouse, USB camera).
2		Lock switch	Locks the screen orientation.
3		Dock connector	Connects to the supplied keyboard dock. USB port may also be used as a standard USB port.
4		SIM card slot	Accepts a 3G SIM card (configuration may vary depending on model).




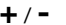




Note: Display orientation may be fixed when applications designed for a specific orientation are running. These include games and other full-screen applications.

When making video calls, you should always hold the tablet in landscape orientation.


Left view



No.	Icon	Item	Description
1		Headphone jack	Connects to audio devices (e.g., speakers, headphones). Supports compatible 3.5 mm headsets with built-in microphone (e.g. Acer smart handheld headsets).
2		Battery LED	Indicates the computer's battery status. 1. Charging: Amber. 2. Fully charged: Blue when plugged in.
3		Power button	Press to turn the tablet on; press again to place the tablet in Sleep mode. Press and hold to turn the tablet off.
4		Volume key	Press to increase or decrease volume.
5		Ventilation slot	Provides adequate air flow to maintain a safe operating temperature.
6		2-in-1 card reader	Accepts Secure Digital (SD), MultiMediaCard (MMC). Note: Push to remove/install the card. Only one card can operate at any time.
7		HDMI port	Supports high-definition digital video connections.

Right view



No.	Icon	Item	Description
1		DC-in jack	Connects to an AC adapter.

Booting your tablet

There are three ways to boot your tablet:

- 1 Quick boot: Press the power button; no external USB keyboard support before Windows boots; always boots from the SSD; overrides BIOS settings.
- 2 Normal boot: Simultaneously press the power button and the Windows key; supports USB keyboard, <F2> and <F12> hotkeys; this boot sequence is used if Windows shuts down abnormally or after making changes to BIOS.
- 3 Boot from recovery discs: Press the power button, Windows key and volume up key simultaneously. Use this if you need to restore your operating system to factory defaults from the supplied recovery discs. Please refer to **Recovering your system** in the User Guide.

Key functions for boot menus

For menus displayed before Windows boots:

Windows key: Select the highlighted menu option.

Volume up/down: Move the cursor up or down.

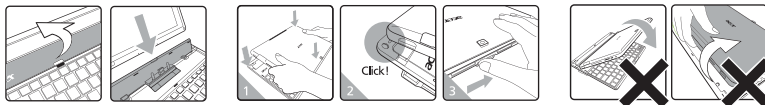
Connect the tablet to the keyboard dock

Align the two arrows printed beneath the screen with the two pins on the keyboard dock. Press the tablet down.



Secure the tablet to the keyboard dock

Place the tablet on the dock, ensuring you hear two clicks. Use the latch to secure the tablet.



Note: Remove the tablet by releasing the latch and lifting the tablet from the camera side.



Warning: Do not lift the tablet from the speaker side.

Keyboard dock

The following set of images show you the optional keyboard dock.

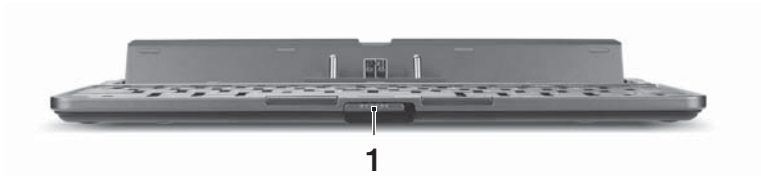
Top view



No.	Item	Description
1	Dock connector	Connects to the tablet.
2	Keyboard	A standard keyboard with full-size keys.

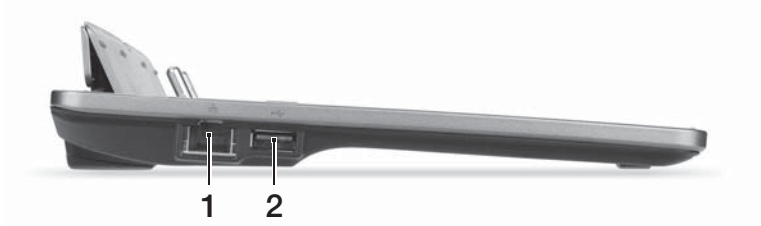
No.	Item	Description
3	Acer FineTrack pointing device	Pointing device to control cursor movement.
4	Latch	Secures the tablet to the keyboard dock when closed.
5	Left and right buttons	Function like the left and right mouse buttons.



Front view



No.	Item	Description
1	Latch	Secures the tablet to the keyboard dock when closed.


Left view



No.	Icon	Item	Description
1		Ethernet (RJ-45) port	Connects to an Ethernet 10/100/1000-based network.
2		USB 2.0 port	Connect to USB 2.0 devices (e.g., USB mouse, USB camera).

Right view



No.	Icon	Item	Description
1		USB 2.0 port	Connect to USB 2.0 devices (e.g., USB mouse, USB camera).







Environment

- Temperature:
 - Operating: 5 °C to 35 °C
 - Non-operating: -20 °C to 65 °C
- Humidity (non-condensing):
 - Operating: 20% to 80%
 - Non-operating: 20% to 80%

Acer Ring

Acer Ring incorporates a number of useful functions and tools in one easy-to-use interface. Tap the touchscreen with all five fingers at once to display Acer Ring.



Icon	Item	Description
	Sync	Opens the data synchronization tool.
	Game	Opens Acer GameZone.
	Calculator	Opens the Windows Calculator.
	Webcam	Opens the Acer CrystalEye webcam utility.
	Snipping tool	Opens the Windows Snipping Tool.
	Disk Clean	Opens the disk cleaning tool.
	Device Control	Adjust settings for your computer (please refer to Device Control on page 20).

On one side of Acer Ring you can see a selection of AppCards. You can scroll through the applications and tap on a card to open the application.

Sync function

Press to run all existing sync/backup jobs, including sync jobs created in the Migration and Synchronization Wizard. Please refer to **Acer Backup Manager on page 27**.

Clean Disk function

The Clean Disk functions lists files that have not been used recently and have been successfully backed up. You can delete the files on that list, knowing you can restore these files from backup copies at a later date if required.

TouchBrowser

TouchBrowser is specifically designed to offer you a more comfortable web surfing experience when using touch input. Open Acer Ring and tap the TouchBrowser AppCard to launch the browser.



The toolbar at the top of the screen gives you easy control over the open page.

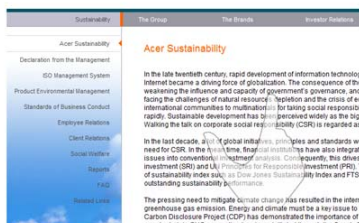
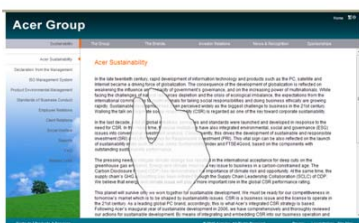


To enter a website address, tap the URL bar. A keyboard icon will display, allowing you to open a virtual keyboard and enter text, or use handwriting to enter the URL.



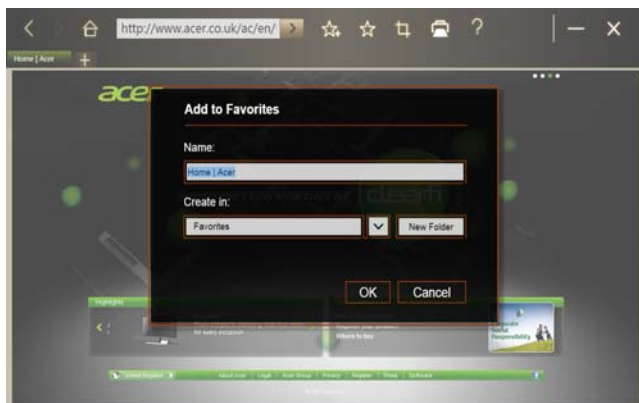
No.	Item	Description
1	Back	Go back one page.
2	Forward	Go forward to the next page in the browsing history.
3	Home	Open the defined home page.
4	Tabs	Shows the pages currently open.
5	Open new tab	Tap to open a new tab.
6	URL bar	Shows the address of the current page.
7	Refresh	Refreshes the current tab content.
8	Add to favorites	Add the current page to your favorites.
9	Favorites	Open the list of your favorites / history.
10	Web Clip	Crop a part of the web page for use in My Journal or Scrapbook .
11	Print	Print the page.
12	Help	View the Help file.
13	Minimize	Minimizes the browser.
14	Close	Closes the browser.

You can use a pinch action to zoom in to content on the page.



Adding a page to your Favorites

To add a page to your Favorites, tap the **Add to Favorites** icon, give the page a name (the page title will be used by default) and select a folder to save the URL to.



My Journal

My Journal is a handy place for you to keep clippings of websites and other information you may want to refer to later. You can organize the information you wish to view from a number of sources on a single, easy-to-view page.

Open Acer Ring and scroll through the AppCards to My Journal. Tap the AppCard to open the application.



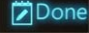

Website content is automatically updated each time you open the journal page.

Use the tabs along the top of the screen to switch between your journal pages, or tap the icons on the toolbar to perform various functions.



No.	Item	Description
1	Web clip	Crop a part of the web page for use in My Journal.
2	Edit	Edit the content on the journal pages.
3	Help	View the help file.
4	Minimize	Minimizes My Journal.
5	Close	Closes My Journal.
6	Tabs	Shows the pages in your journal.




Note: When you have finished editing your clips, tap  **Done** to return to viewing mode. If you want to edit a web clip at a later time, tap the edit icon  to enter edit mode.

Editing pages

In edit mode, you can resize web clips by dragging the corners of the web clip to the size you want.

You can also move web clips to other pages by dragging the web clip to the tab for the page you want to move the clip to.

Tap the name of a tab to rename the tab. You can use either the virtual keyboard or the keyboard on the dock. When you have finished, tap .

Web Clip

The web clip tool allows you to clip parts of web pages to save them to My Journal. Once you have a page open in your browser, tap the **Web clip** icon.



Tap the browser screen to select the area you want to crop; tap and drag on any of the circles on the corner of the crop window to expand it to include all the information you want to capture.



When you have finished selecting the area you want to crop, tap the area to open a menu that will allow you to paste the content into **My Journal** or **Copy** it to the clipboard. You can also **Save bitmap as...** or **Discard** the web clip.



In My Journal, tap a clip to select it, then you can position it on the page and stretch it by dragging the corners to the desired size.



To delete a web clip, tap the clip in **My Journal** and tap the trash can icon.



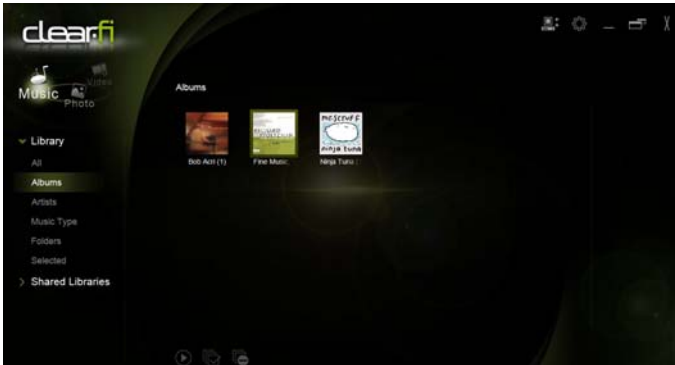
Note: If the web clip comes from a site that requires a login, the clip will be grayed out and a key icon will show to indicate that it requires a login. Tap the clip to open the login page in My Journal.



Note: If an Internet connection to the website is unavailable, the clip will indicate that the connection is unavailable. Tap the clip to refresh the data.

Acer clear.fi

Acer clear.fi is a home media database viewer and controller. It allows you to browse media content, such as music, photos, or videos, on devices that are on the same network.



Media content types

When you launch Acer clear.fi, you can choose the media content type. There are three types defined: Video, Music, and Photo.

DMS (Digital Media Server) devices

DMS devices include DLNA-compliant personal computers and NAS (Network Attached Storage) devices. These devices store content and make it available to DMP (Digital Media Player) and DMR (Digital Media Renderer) devices. Acer clear.fi will list DMS devices on the main screen, and you can choose ALL DEVICES or a specific device to browse the media stored.

Display media content

If you want to display media content on your computer, you just need to double-click the media content. If you want to display the media content on a remote device, you need to do the following:

- 1 Choose the media content.
- 2 Select **Play To**.
- 3 Select the files you wish to play, then send them to the remote device. The target icon will change to display the status. You can view playback controls and progress on the target.

Save media content

If you want to save media content to a remote device, you need to do the following:

- 1 Choose the media content.
- 2 Select **Save To**.
- 3 Select the files you wish to save, then send them to the remote device. The target icon will change to display the status. You can view the save status progress bar on the target. Click the target to display a dialog box that allows you to cancel the process.

Search media

If you want to search your media content, you need to choose the media type first; then enter a keyword in the search bar. Acer clear.fi will list the media content that matches the keyword.

Media sharing settings

You can adjust settings according to your requirements.



Device Control

Device Control is a convenient way for you to control the screen brightness and adjust the volume to suit your needs. It also indicates the location of each port on your computer and allows you to turn your connectivity devices on or off, select a power scheme, lock your computer, turn it off, or place it in Sleep mode.

The Device Control UI also indicates if the tablet is docked:



Or if the tablet is undocked:



If you have any devices plugged into a USB port or the HDMI port, Device Control will show what type of device is plugged into each port. If you have inserted a

storage device into a USB port, you may tap the USB icon to open a context menu. Tap **Open** to view the files in Windows Explorer.

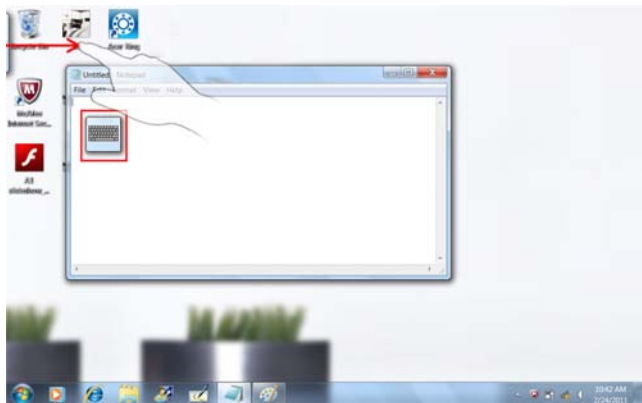


To safely remove the device, select **Eject** from the menu.

There is also a context menu available for the HDMI connector.

Using the virtual keyboard

Microsoft Windows provides a convenient virtual keyboard for entering data. To use the keyboard, tap a text box to display the keyboard icon. Tap the icon to open the keyboard. Alternatively, tap and drag the keyboard tab displayed on the left-hand side of the screen.

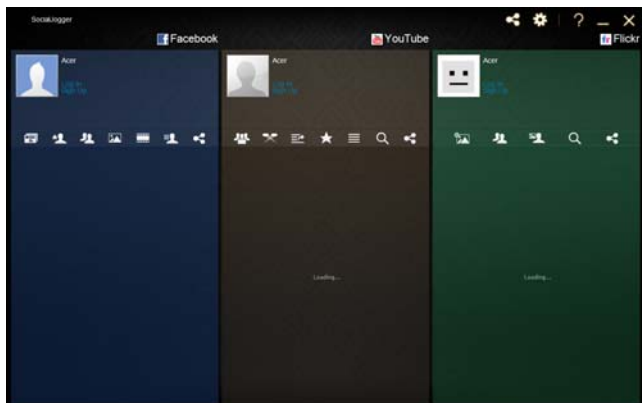


SocialJogger

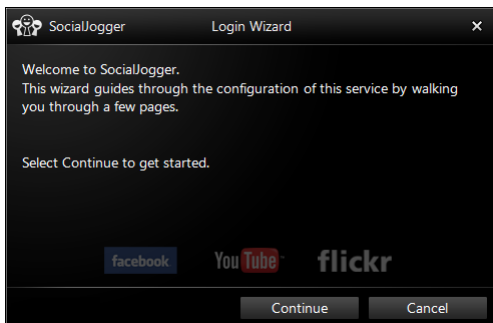
Open Acer Ring and tap the SocialJogger AppCard.



SocialJogger gives you one-touch access to popular social networking sites: Facebook, YouTube and Flickr.

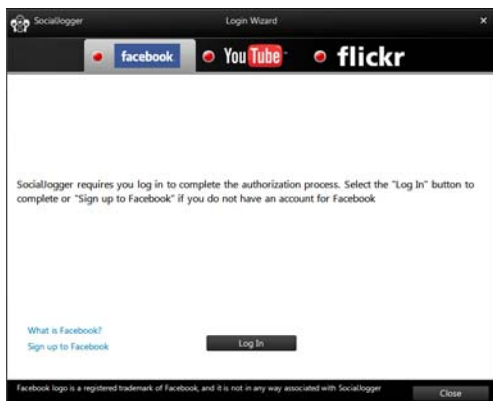


Tap **Log In** to open the login wizard. You can log into all three supported services from a single login wizard. If you don't already have an account with the supported services, you can create an account from the wizard.



Tap **Continue** to log into your account(s):

Facebook



YouTube

Sociallogger Login Wizard

facebook YouTube flickr

Please sign in to your YouTube account

Username:

Password:

☐ Remember me

[Log In](#)

[Forgot your username?](#) [Forgot your password?](#)

New to YouTube?
 Signing up is easy. After providing some basic information, you can join YouTube for free with just a few clicks. With YouTube you can broadcast your video to the world.

[What is YouTube?](#) [Sign up to YouTube](#)

[Close](#)

Flickr

Sociallogger Login Wizard

facebook YouTube flickr


Sociallogger requires you log in to complete the authorization process. Select the "Log In" button to complete or "Sign up to Flickr" if you do not have an account for Flickr

[What is Flickr?](#) [Sign up to Flickr](#)

[Log In](#)

[Close](#)

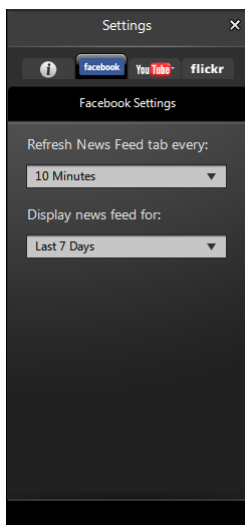
Sharing content

You can upload content to each service by tapping the **Share on** icon  in the upper right-hand corner of the page. This will open a file browser above the three service pages. Drag and drop the content you want to share to the desired service.



Settings

You can adjust the settings for each service by tapping the **Settings** icon. This opens the settings window with a tab for each service.



Acer Backup Manager

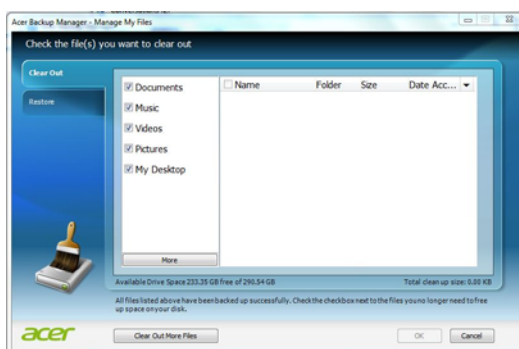
Acer Backup Manager includes a Migration and Synchronization Wizard which runs after Windows 7 setup is complete. Additionally, you can launch it by double-clicking the desktop shortcut.

It helps you migrate system settings (e.g., email settings and Internet Explorer Favorites) from an existing computer to your new tablet PC.



It also establishes a synchronization relationship between the two computers, so that all files in the Documents, Pictures, Music, and Videos libraries on the tablet PC will be kept synchronized with their shadows on the other PC.

Acer Backup Manager also includes the Disk Clean function (please refer to **Clean Disk function on page 10.**)



Screen orientation and G-sensor

Your computer has a built-in accelerometer that detects the tablet's orientation and automatically rotates the screen to suit the orientation.

You can lock the screen orientation by using the lock switch. The orientation may also be locked at other times, including:

- When the tablet is attached to the keyboard dock.
- With an HDMI cable is plugged in.
- When programs designed for a specific orientation are running.



.....

Note: You are advised to keep your tablet in landscape orientation with the webcam above the screen while you are making a video call. Please rotate your display to the landscape orientation and use the lock switch to set the orientation before starting a video call.

The screen orientation lock status will be indicated via icons briefly displayed onscreen when the status changes.

Power management

This computer has a built-in power management unit that monitors system activity. System activity refers to any activity involving one or more of the following devices: keyboard, mouse, hard disk, peripherals connected to the computer, and video memory. If no activity is detected for a period of time (called an inactivity timeout), the computer stops some or all of these devices in order to conserve energy.

This computer employs a power management scheme that supports the advanced configuration and power interface (ACPI), which allows for maximum power conservation and maximum performance at the same time. Windows handles all power-saving chores for your computer.

Recovering your system

Your computer was shipped with a set of recovery DVDS that contains the system recovery information. While the tablet is turned off, plug in an external DVD drive, insert the first disc into the DVD drive. Press the Windows key, volume up key, and power button simultaneously to turn on the system. Follow the onscreen instructions to complete the recovery process.

You will be reminded to remove the discs from the drive before your computer reboots.



.....
Note: An external DVD drive needs to be purchased separately.

Battery pack

The computer uses a battery pack that gives you long use between charges.

Battery pack characteristics

The battery pack has the following characteristics:

- Employs current battery technology standards.
- Delivers a battery-low warning.

The battery is recharged whenever you connect the computer to the AC adapter. Your computer supports charge-in-use, enabling you to recharge the battery while you continue to operate the computer. However, recharging with the computer turned off results in a significantly faster charge time.

Maximizing the battery's life

Like all other batteries, your computer's battery will degrade over time. This means that the battery's performance will diminish with time and use. To maximize your battery's life, you are advised to adhere to the recommendations set out below.

Conditioning a new battery pack

Before you use a battery pack for the first time, there is a conditioning process that you should follow:

- 1 Connect the AC adapter and fully charge the battery.
- 2 Disconnect the AC adapter.
- 3 Turn on the computer and operate using battery power.
- 4 Fully deplete the battery until the battery-low warning appears.
- 5 Reconnect the AC adapter and fully charge the battery again.

Follow these steps again until the battery has been charged and discharged three times.

Use this conditioning process for all new batteries, or if a battery hasn't been used for a long time.



Warning: Do not expose battery packs to temperatures below 0° C (32° F) or above 45° C (113° F). Extreme temperatures may adversely affect the battery pack.

By following the battery conditioning process you condition your battery to accept the maximum possible charge. Failure to follow this procedure will prevent you from obtaining the maximum battery charge, and will also shorten the effective lifespan of the battery.

In addition, the useful lifespan of the battery is adversely affected by the following usage patterns:

- Not discharging and recharging the battery to its extremes, as described above.
- Frequent use; the more you use the battery, the faster it will reach the end of its effective life. A standard computer battery has a life span of about 300 charges.

Charging the battery

Plug the AC adapter into the computer, and connect to a mains power outlet. You can continue to operate your computer on AC power while your battery is charging. However, charging the battery with the computer turned off results in a significantly faster charge time.



Note: You are advised to charge the battery before retiring for the day. Charging the battery overnight before traveling enables you to start the next day with a fully-charged battery.

Checking the battery level

The Windows power meter indicates the current battery level. Rest the cursor over the battery/power icon on the taskbar to see the battery's present charge level.

Battery low warning

When using battery power pay attention to the Windows power meter.



Warning: Connect the AC adapter as soon as possible after the battery-low warning appears. Data will be lost if the battery becomes fully depleted and the computer shuts down.

When the *battery low* warning appears, the recommended course of action depends on your situation:

Situation	Recommended Action
The AC adapter and a power outlet are available.	<ol style="list-style-type: none">1. Plug the AC adapter into the computer, and then connect to the mains power supply.2. Save all necessary files.3. Resume work. <p>Turn off the computer if you want to recharge the battery rapidly.</p>
The AC adapter or a power outlet is unavailable. You have no spare battery pack.	<ol style="list-style-type: none">1. Save all necessary files.2. Close all applications.3. Shut down the operating system to turn off the computer.

Expanding through options

Your computer offers you a complete mobile computing experience.

Connectivity options

Ports allow you to connect peripheral devices to your computer as you would with a desktop PC. For instructions on how to connect different external devices to the computer, read the following section.

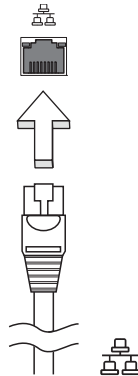
Network feature



Note: The network feature is a part of the optional keyboard dock.

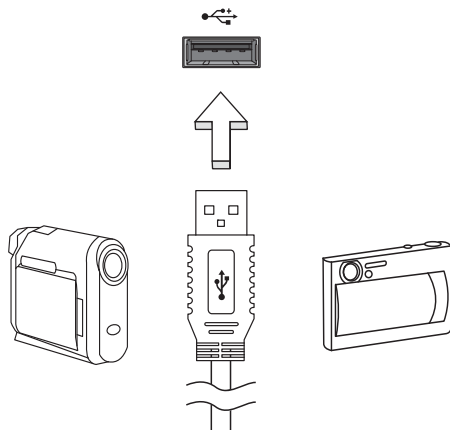
The network feature allows you to connect your computer to an Ethernet-based network.

To use the network feature, connect an Ethernet cable from the Ethernet (RJ-45) port on the chassis of the computer to a network jack or hub on your network.



Universal Serial Bus (USB)

The 2.0 ports are a high-speed serial bus which allows you to connect USB peripherals without taking up system resources.



High-Definition Multimedia Interface

HDMI (High-Definition Multimedia Interface) is an industry-supported, uncompressed, all-digital audio/video interface. HDMI provides an interface between any compatible digital audio/video source, such as a set-top box, DVD player, and A/V receiver and a compatible digital audio and/or video monitor, such as a digital television (DTV), over a single cable.

Use the HDMI port on your computer to connect with high-end audio and video equipment. Single cable implementation allows tidy setup and fast connection.



BIOS utility

The BIOS utility is a hardware configuration program built into your computer's BIOS.

Your computer is already properly configured and optimized, and you do not need to run this utility. However, if you encounter configuration problems, you may need to run it.

To activate the BIOS utility, connect a USB keyboard to your tablet PC and press <F2> during the POST; while the computer logo is displayed.



.....

Note: To access the BIOS Utility, you need to connect a USB keyboard, and hold the Windows key while pressing the power button.

Boot sequence

To set the boot sequence in the BIOS utility, activate the BIOS utility, then select **Boot** from the categories listed at the top of the screen.

Frequently asked questions

The following is a list of possible situations that may arise during the use of your computer. Easy solutions are provided for each one.

I turned on the power, but the computer does not start or boot up.

Look at the power indicator:

- If it is not lit, no power is being supplied to the computer. Check the following:
 - If you are using on the battery, it may be low and unable to power the computer. Connect the AC adapter to recharge the battery pack.
 - Make sure that the AC adapter is properly plugged into the computer and to the power outlet.

Nothing appears on the screen.

The computer's power management system automatically blanks the screen to save power. Press any key to turn the display back on.

If pressing a key does not turn the display back on, three things might be the cause:

- The brightness level might be too low. Press **<Fn> + <F>** (increase) to adjust the brightness level.
- If the Sleep indicator is lit, the computer is in Sleep mode. Press and release the power button to resume.

No audio is heard from the computer.

Check the following:

- The volume may be muted. In Windows, look at the volume control (speaker) icon on the taskbar. If it is crossed-out, click on the icon and deselect the **Mute all** option.
- The volume level may be too low. In Windows, look at the volume control icon on the taskbar. You can also use the volume control buttons to adjust the volume.
- If headphones, earphones or external speakers are connected to the line-out port on the computer, the internal speakers automatically turn off.

The printer does not work.

Check the following:

- Make sure that the printer is connected to a power outlet and that it is turned on.

- Make sure that the printer cable is connected securely to a USB port and the printer.

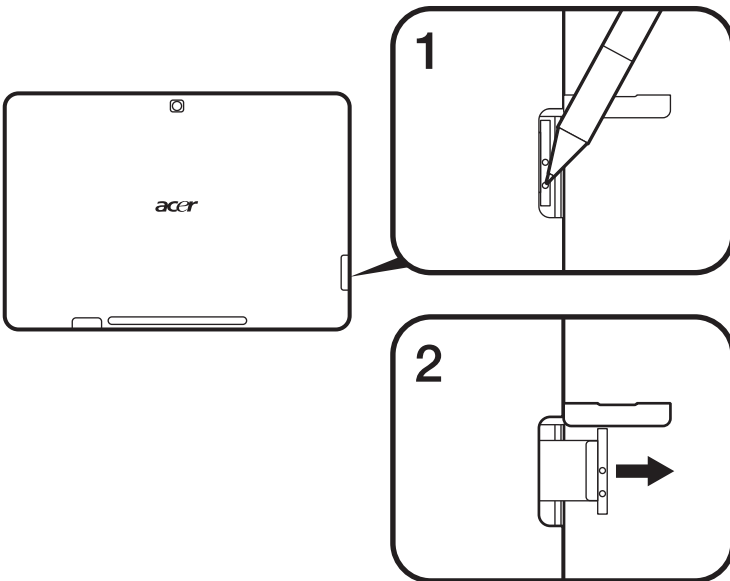
Requesting service

Locating the Microsoft Certificate of Authenticity

The Microsoft Certificate of Authenticity (COA) proves that your computer was shipped with an authentic Microsoft operating system. It contains a number of security features and may not be removed from the computer.

The COA is placed on a slide-out tab located just above the SD Card slot. To view the COA, you will need to pull out the tab.

- 1 Place the tablet screen down on a suitable surface and open the SD Card slot cover.
- 2 Insert a pen into one of the two small indentations on the tab.
- 3 Pull the tab out carefully.



International Travelers Warranty

Your computer is backed by an International Travelers Warranty (ITW) that gives you security and peace of mind when traveling. Our worldwide network of service centers are there to give you a helping hand.

An ITW passport comes with your computer. This passport contains all you need to know about the ITW program. A list of available, authorized service centers is in this handy booklet. Read this passport thoroughly.

Always have your ITW passport on hand, especially when you travel, to receive the benefits from our support centers. Place your proof-of-purchase in the flap located inside the front cover of the ITW passport.

If the country you are traveling in does not have an Acer-authorized ITW service site, you can still get in contact with our offices worldwide. Please consult **www.acer.com**.

Before you call

Please have the following information available when you call Acer for online service, and please be at your computer when you call. With your support, we can reduce the amount of time a call takes and help solve your problems efficiently. If there are error messages or beeps reported by your computer, write them down as they appear on the screen (or the number and sequence in the case of beeps).

You are required to provide the following information:

Name: _____

Address: _____

Telephone number: _____

Machine and model type: _____

Serial number: _____

Date of purchase: _____

Troubleshooting

This chapter shows you how to deal with common system problems. Read it before calling a technician if a problem occurs. Solutions to more serious problems require opening up the computer. Do not attempt to open the computer yourself; contact your dealer or authorized service center for assistance.

Troubleshooting tips

This computer incorporates an advanced design that delivers onscreen error message reports to help you solve problems.

If the system reports an error message or an error symptom occurs, see the table below. If the problem cannot be resolved, contact your dealer. See **Requesting service on page 37**.

Error messages	Corrective action
CMOS battery bad	Contact your dealer or an authorized service center.
CMOS checksum error	Contact your dealer or an authorized service center.
Disk boot failure	Insert a system (bootable) disk into an external drive, then press <Enter> to reboot.
Equipment configuration error	Press <F2> (during POST) to enter the BIOS utility, then press Exit in the BIOS utility to reboot.
Hard disk 0 error	Contact your dealer or an authorized service center.
Hard disk 0 extended type error	Contact your dealer or an authorized service center.
I/O parity error	Contact your dealer or an authorized service center.
Keyboard error or no keyboard connected	Contact your dealer or an authorized service center.
Keyboard interface error	Contact your dealer or an authorized service center.
Memory size mismatch	Press <F2> (during POST) to enter the BIOS utility, then press Exit in the BIOS utility to reboot.

If you still encounter problems after going through the corrective measures, please contact your dealer or an authorized service center for assistance. Some problems may be solved using the BIOS utility.

Regulations and safety notices

FCC statement

This device has been tested and found to comply with the limits for a Class B digital device pursuant to Part 15 of the FCC rules. These limits are designed to provide reasonable protection against harmful interference in a residential installation. This device generates, uses, and can radiate radio frequency energy and, if not installed and used in accordance with the instructions, may cause harmful interference to radio communications.

However, there is no guarantee that interference will not occur in a particular installation. If this device does cause harmful interference to radio or television reception, which can be determined by turning the device off and on, the user is encouraged to try to correct the interference by one or more of the following measures:

- Reorient or relocate the receiving antenna.
- Increase the separation between the device and receiver.
- Connect the device into an outlet on a circuit different from that to which the receiver is connected.
- Consult the dealer or an experienced radio/television technician for help.

Notice: Shielded cables

All connections to other computing devices must be made using shielded cables to maintain compliance with FCC regulations.

Notice: Peripheral devices

Only peripherals (input/output devices, terminals, printers, etc.) certified to comply with the Class B limits may be attached to this equipment. Operation with non-certified peripherals is likely to result in interference to radio and TV reception.

Caution

Changes or modifications not expressly approved by the manufacturer could void the user's authority, which is granted by the Federal Communications Commission, to operate this computer.

FCC Regulations

This device complies with part 15 of the FCC Rules. Operation is subject to the following two conditions: (1) This device may not cause harmful interference, and (2)

this device must accept any interference received, including interference that may cause undesired operation.

Notice: Canadian users

This Class B digital apparatus complies with Canadian ICES-003.

Remarque à l'intention des utilisateurs canadiens

Cet appareil numérique de la classe B est conforme à la norme NMB-003 du Canada.

Compliant with Russian regulatory certification



LCD pixel statement

The LCD unit is produced with high-precision manufacturing techniques. Nevertheless, some pixels may occasionally misfire or appear as black or red dots. This has no effect on the recorded image and does not constitute a malfunction.

Radio device regulatory notice



Note: Below regulatory information is for models with wireless LAN and / or Bluetooth only.

General

This product complies with the radio frequency and safety standards of any country or region in which it has been approved for wireless use. Depending on configurations, this product may or may not contain wireless radio devices (such as wireless LAN and/or Bluetooth modules). Below information is for products with such devices.

Declaration of Conformity for EU countries

Hereby, Acer, declares that this computer is in compliance with the essential requirements and other relevant provisions of Directive 1999/5/EC.

Wireless operation channels for different domains

N. America	2.412-2.462 GHz	Ch01 through Ch11
Japan	2.412-2.484 GHz	Ch01 through Ch14
Europe ETSI	2.412-2.472 GHz	Ch01 through Ch13

France: Restricted wireless frequency bands

Some areas of France have a restricted frequency band. The worst case maximum authorized power indoors is:

- 10 mW for the entire 2.4 GHz band (2400 MHz - 2483.5 MHz)
- 100 mW for frequencies between 2446.5 MHz and 2483.5 MHz



Note: Channels 10 through 13 inclusive operate in the band 2446.6 MHz to 2483.5 MHz.

There are few possibilities for outdoor use: On private property or on the private property of public persons, use is subject to a preliminary authorization procedure by the Ministry of Defense, with maximum authorized power of 100 mW in the 2446.5 - 2483.5 MHz band. Use outdoors on public property is not permitted.

In the departments listed below, for the entire 2.4 GHz band:

- Maximum authorized power indoors is 100 mW
- Maximum authorized power outdoors is 10 mW

Departments in which the use of the 2400 - 2483.5 MHz band is permitted with an EIRP of less than 100 mW indoors and less than 10 mW outdoors:

01 Ain Orientales	24 Dordogne	55 Meuse	68 Haut Rhin
02 Aisne	25 Doubs	58 Nièvre	70 Haute Saone
03 Allier	26 Drome	59 Nord	71 Saone et Loire
05 Hautes Alpes	32 Gers	60 Oise	75 Paris
08 Ardennes	36 Indre	61 Orne	82 Tarn et Garonne
09 Ariege	37 Indre et Loire	63 Puy Du Dome	84 Vaucluse
11 Aude	41 Loir et Cher	64 Pyrenees Atlantique	88 Vosges
12 Aveyron	45 Loret	66 Pyrenees	89 Yonne
16 Charente	50 Manche	67 Bas Rhin	90 Territoire de Belfort
			94 Val de Marne

This requirement is likely to change over time, allowing you to use your wireless LAN card in more areas within France.

Please check with ART for the latest information (www.art-telecom.fr).



Note: Your WLAN Card transmits less than 100 mW, but more than 10 mW.

List of National Codes

This equipment may be operated in the following countries:

Country	ISO 3166 2 letter code	Country	ISO 3166 2 letter code
Austria	AT	Malta	MT
Belgium	BE	Netherlands	NT
Cyprus	CY	Poland	PL
Czech Republic	CZ	Portugal	PT
Denmark	DK	Slovakia	SK
Estonia	EE	Slovenia	SL
Finland	FI	Spain	ES
France	FR	Sweden	SE
Germany	DE	United Kingdom	GB
Greece	GR	Iceland	IS
Hungary	HU	Liechtenstein	LI
Ireland	IE	Norway	NO
Italy	IT	Switzerland	CH
Latvia	LV	Bulgaria	BG
Lithuania	LT	Romania	RO
Luxembourg	LU	Turkey	TR

The FCC RF safety requirement

The radiated output power of the wireless LAN Mini PCI Card and Bluetooth card is far below the FCC radio frequency exposure limits. Nevertheless, the computer series shall be used in such a manner that the potential for human contact during normal operation is minimized as follows:

- 1 Users are requested to follow the RF safety instructions on wireless option devices that are included in the user's manual of each RF option device.
- 2 This device is restricted to indoor use due to its operation in the 5.15 to 5.25 GHz frequency range. FCC requires this product to be used indoors for the frequency range 5.15 to 5.25 GHz to reduce the potential for harmful interference to co-channel Mobile Satellite systems.
- 3 High power radar are allocated as primary users of the 5.25 to 5.35 GHz and 5.65 to 5.85 GHz bands. These radar stations can cause interference with and/or damage this device.
- 4 An improper installation or unauthorized use may cause harmful interference to radio communications. Also any tampering of the internal antenna will void the FCC certification and your warranty.

Canada — Low-power license-exempt radio communication devices (RSS-210)

Exposure of humans to RF fields (RSS-102)

The computer series employs low gain integral antennas that do not emit RF field in excess of Health Canada limits for the general population; consult Safety Code 6, obtainable from Health Canada's website at www.hc-sc.gc.ca/rpb.

This device complies with RSS210 of Industry Canada.

This Class B digital apparatus complies with Canadian ICES-003, Issue 4, and RSS-210, No 4 (Dec 2000) and No 5 (Nov 2001).

Cet appareil numérique de la classe B est conforme à la norme NMB-003, No. 4, et CNR-210, No 4 (Dec 2000) et No 5 (Nov 2001).

"To prevent radio interference to the licensed service, this device is intended to be operated indoors and away from windows to provide maximum shielding. Equipment (or its transmit antenna) that is installed outdoors is subject to licensing."

« Pour empêcher que cet appareil cause du brouillage au service faisant l'objet d'une licence, il doit être utilisé à l'intérieur et devrait être placé loin des fenêtres afin de fournir un écran de blindage maximal. Si le matériel (ou son antenne d'émission) est installé à l'extérieur, il doit faire l'objet d'une licence.

Caution: When using IEEE 802.11a wireless LAN, this product is restricted to indoor use due to its operation in the 5.15- to 5.25-GHz frequency range. Industry Canada requires this product to be used indoors for the frequency range of 5.15 GHz to 5.25 GHz to reduce the potential for harmful interference to co-channel mobile satellite systems. High power radar is allocated as the primary user of the 5.25- to 5.35-GHz and 5.65 to 5.85-GHz bands. These radar stations can cause interference with and/or damage to this device.

The maximum allowed antenna gain for use with this device is 6dBi in order to comply with the E.I.R.P limit for the 5.25- to 5.35 and 5.725 to 5.85 GHz frequency range in point-to-point operation.

IC Regulations

This device complies with Industry Canada license-exempt RSS standard(s). Operation is subject to the following two conditions: (1) this device may not cause interference, and (2) this device must accept any interference, including interference that may cause undesired operation of the device.

Le présent appareil est conforme aux CNR d'Industrie Canada applicables aux appareils radio exempts de licence. L'exploitation est autorisée aux deux conditions suivantes: (1) l'appareil ne doit pas produire de brouillage, et (2)

l'utilisateur de l'appareil doit accepter tout brouillage radioélectrique subi, même si le brouillage est susceptible d'en compromettre le fonctionnement.