

Using GPS

Your Tablet Computer has a GPS (Global Positioning System) receiver module built in and includes the **u-blox GPS Location Sensors** software.

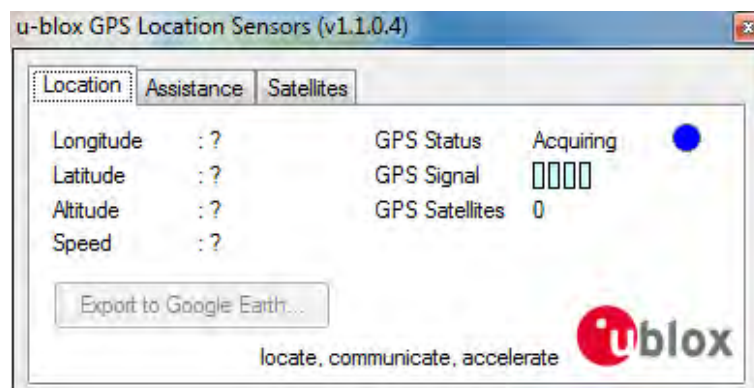
u-blox GPS Location Sensors is an application that allows you to manage the following:

- Location
- Assistance
- Satellites

To open **u-blox GPS Location Sensors**, tap **Start > All Programs > u-blox > u-tray > u-tray 1.1.0.4**

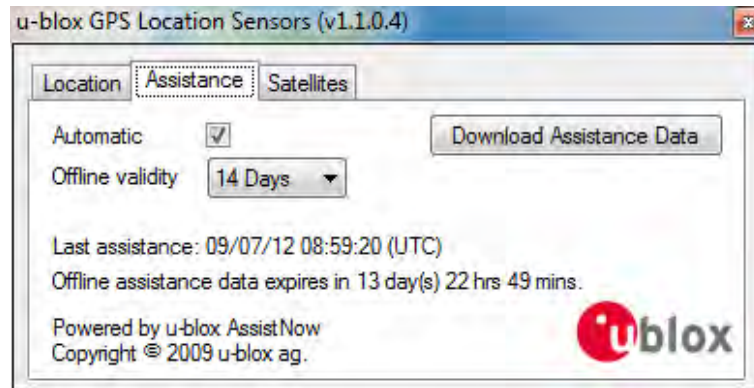
Location

The Location tab provides an overview your location and system status.



Assistance

The Assistance tab allows you to set the schedule and download assistance data.



- To download update manually, tap **Download Assistance Data**.
- To set automatic download, check the **Automatic** box and select the frequency of automatic download in **Offline validity**.

Using the Barcode Reader

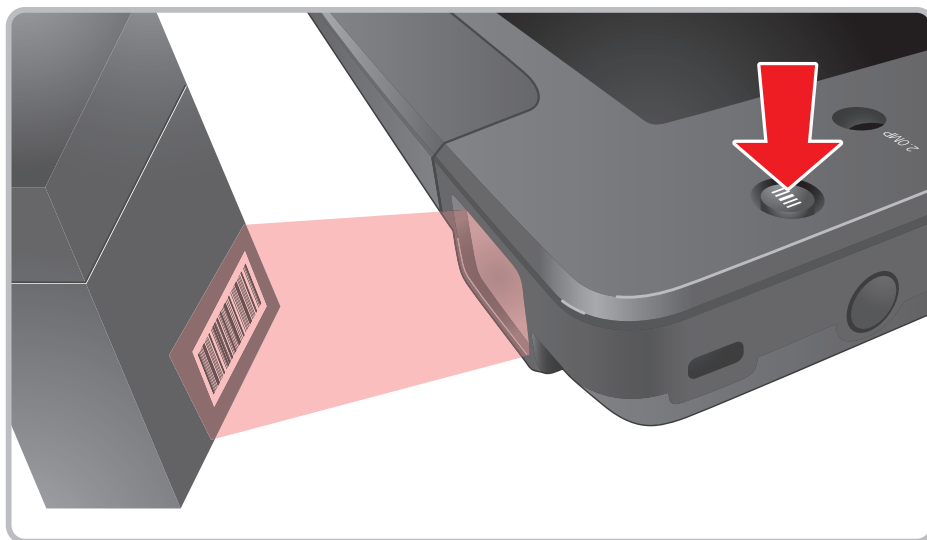
Your Tablet Computer has a built-in barcode reader which is a 2D image CMOS type scanner that you can use to scan barcodes.

NOTE:

- The built-in barcode reader is an optional accessory. Contact your dealer to purchase.
- Alternatively, you can also use a Bluetooth scanner or connect an external barcode scanner to the RS232 port. See for more information.

Perform the following to scan barcodes using the built-in barcode reader:

1. Press and hold the barcode button to active the barcode reader. The barcode reader lights red.
2. Place the barcode label facing the barcode reader. The Tablet Computer emits a beep sound when the barcode is read properly.



Using SmartWedgeLite

The SmartWedgeLite application allows Bluetooth scanners to be paired with your Tablet Computer and scan barcodes into keyboard applications. It also supports barcode scanners connected through the RS232 port of your Tablet Computer.

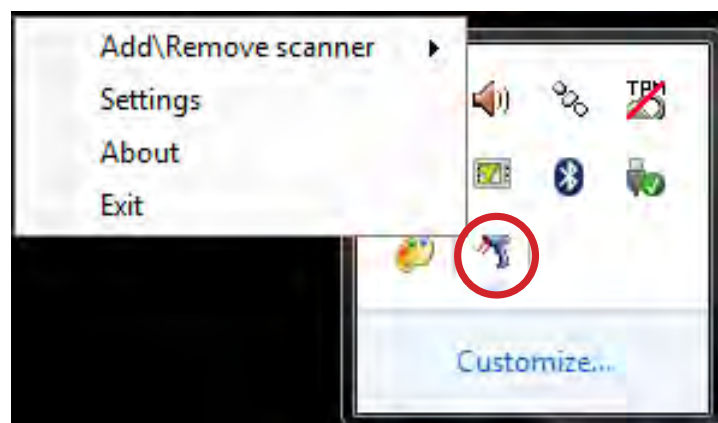
- To pair with a Bluetooth scanner, see “Pairing a Bluetooth Scanner” on page 1-41.
- To connect an external barcode scanner, see “Using an External Barcode Scanner” on page 1-42.

To activate SmartWedgeLite

Tap **Start > All Programs > Intermec > SmartWedgeLite** to activate the application. The SmartWedgeLite (🔫) icon appears on the taskbar.

TIP: To activate SmartWedgeLite faster, create a desktop shortcut icon. Alternatively, you can enable SmartWedgeLite automatically at Windows startup (see “To configure SmartWedgeLite settings” below).

Once SmartWedgeLite is activated, tap and hold on the SmartWedgeLite (🔫) icon on the taskbar to display the pop up menu.



To configure SmartWedgeLite settings


1. Activate SmartWedgeLite (**Start > All Programs > Intermec > SmartWedgeLite**).
2. Tap and hold the SmartWedgeLite (🔫) icon on the taskbar.
3. On the pop-up menu, tap **Settings**.
4. Modify the settings according to your preference:
 - **Default PIN Number:** Enter desired PIN number. The default value is 0000.
 - **Start VirtualWedge at Windows startup:** Check this box to automatically activate SmartWedgeLite when Windows starts up.

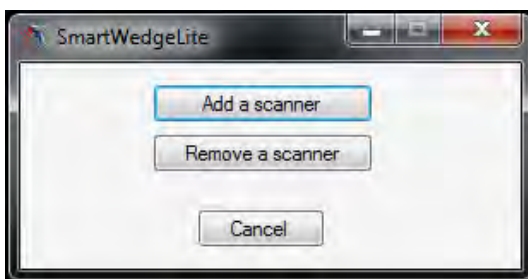
- **Emit a beep locally when barcode data is received:** Check this box to enable the Tablet Computer to emit a beep sound when a barcode is read properly.

5. When finished, tap **OK**.

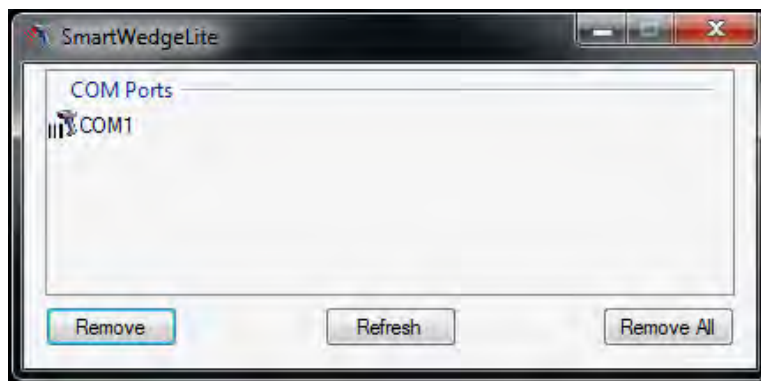
To refresh or remove a scanner

Once an external barcode scanner is connected through the RS232 port of your Tablet Computer, the barcode scanner profile is saved in SmartWedgeLite. You can view the scanner profiles or remove them from the list.

1. Activate SmartWedgeLite on your Tablet Computer (see “To activate SmartWedgeLite” on page 2-22).
2. Tap and hold the SmartWedgeLite () icon on the taskbar.
3. On the pop-up menu, tap **Add\Remove scanner**.
4. The screen below appears, tap **Remove a scanner**.




5. The screen below appears with a list of the barcode scanner profiles.

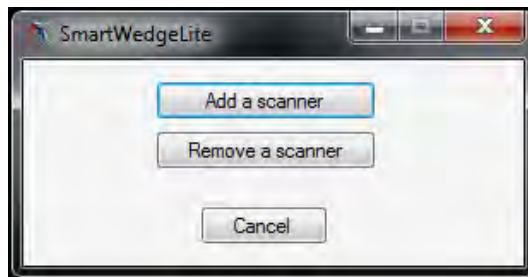


- To refresh the list, tap **Refresh**.
- To remove a profile, tap the profile and then tap **Remove**.
- To remove all profiles, tap **Remove All**.

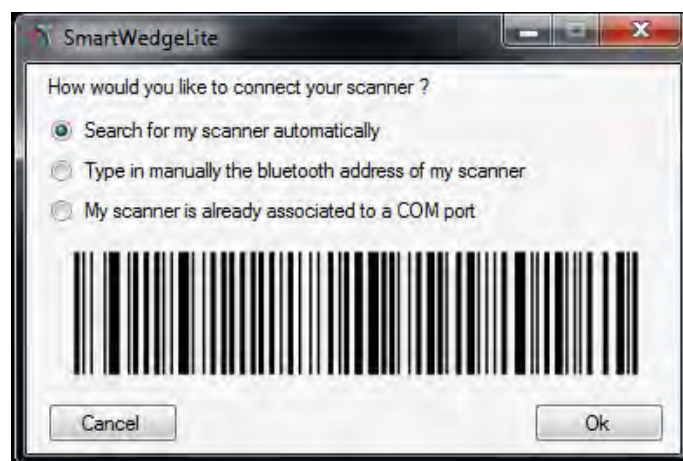
Pairing a Bluetooth Scanner

Perform the following to pair a Bluetooth scanner with your Tablet Computer:

1. Enable Bluetooth on the scanner.
2. Activate SmartWedgeLite on your Tablet Computer (see “To activate SmartWedgeLite” on page 2-22).
3. Tap and hold the SmartWedgeLite () icon on the taskbar.
4. On the pop-up menu, tap **Add\Remove scanner**.
5. The screen below appears, tap **Add a scanner**.

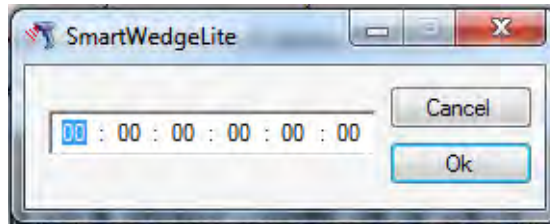


6. When the screen below appears, tap one of the following to connect a Bluetooth scanner:
 - **Search for my scanner automatically:** To scan for the Bluetooth scanner automatically.
 - **Type in manually the bluetooth address of my scanner:** To manually type the Bluetooth address of the barcode scanner.



7. Tap **Ok**.
8. If you select “**Search for my scanner automatically**”, the Tablet Computer automatically searches for the Bluetooth scanner and displays the device on the screen. Tap the Bluetooth scanner and then tap **OK**.

9. If you select “**Type in manually the bluetooth address of my scanner**”, the screen below is displayed. Type the Bluetooth address of the barcode scanner, then tap **Ok**.



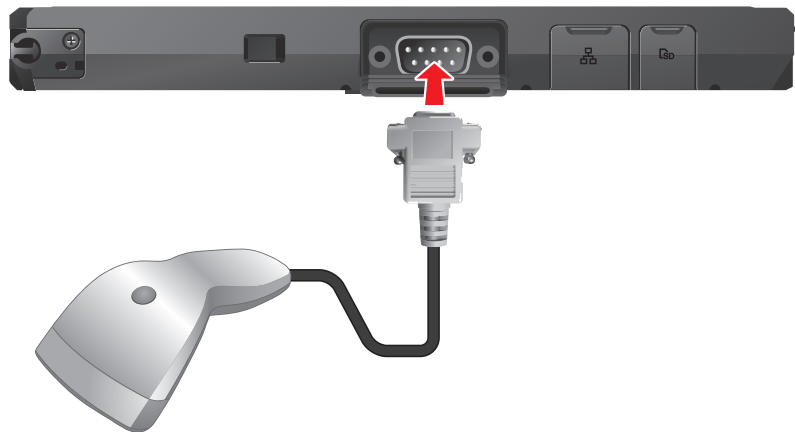
10. Once connected, you may start scanning barcodes using the Bluetooth scanner.


Pairing the Bluetooth scanner with the Tablet Computer is only done when connecting for the first time. The Tablet Computer saves the scanner profile and automatically connects with it when and the Bluetooth scanner is in range and the Bluetooth feature is enabled in the Tablet Computer.

Connecting an External Barcode Scanner

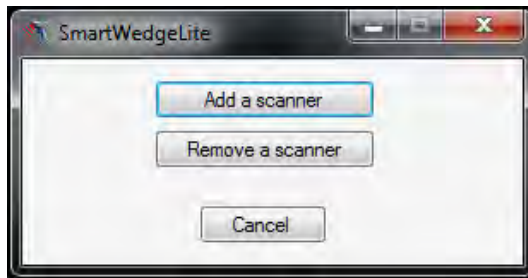
You may connect an external barcode scanner to the RS-232 port of your Tablet Computer.

1. Connect the RS232 connector of the barcode scanner to the RS232 port of your Tablet Computer.

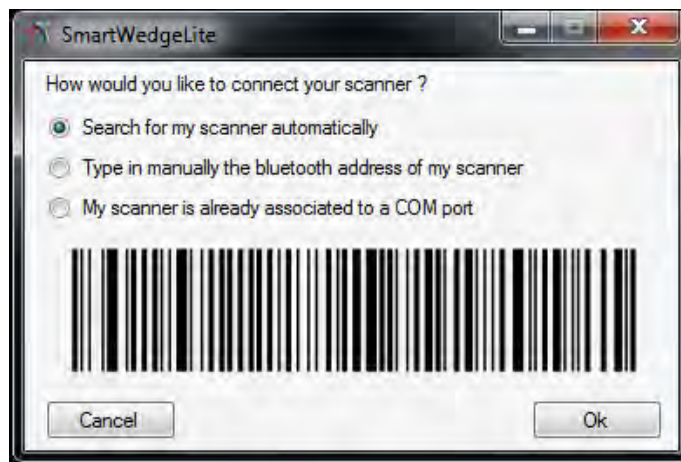


2. Activate SmartWedgeLite on your Tablet Computer (see “To activate SmartWedgeLite” on page 2-22).
3. Tap and hold the SmartWedgeLite () icon on the taskbar.
4. On the pop-up menu, tap **Add\Remove scanner**.

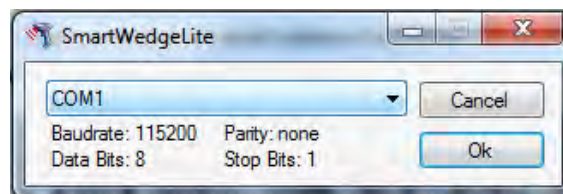
5. The screen below appears, tap **Add a scanner**.



6. When the screen below appears, tap “**My scanner is already associated to a COM port**”, then tap **Ok**.



7. Select the **COM1** port. This is where the external barcode scanner is connected on your Tablet Computer. Then tap **Ok** to connect.



The screen above disappears and the external barcode scanner is connected.

Using the Fingerprint Reader

Your Tablet Computer has a built-in fingerprint reader that you can use to scan and authenticate your fingerprints for security purposes. Instead of entering a password, you can simply swipe a finger on the fingerprint reader and log on to Windows. The fingerprint reader also supports other advanced functions and applications that may require fingerprint authentication, such as website logon, quick launch, and stronger identity protection for websites, among others.

NOTE: Applications that may require fingerprint authentication vary and do not come pre-installed on the Tablet Computer.

Using AuthenTec TrueSuite

Before you can use the fingerprint reader, you must enroll your fingerprints using the **AuthenTec TrueSuite** application.

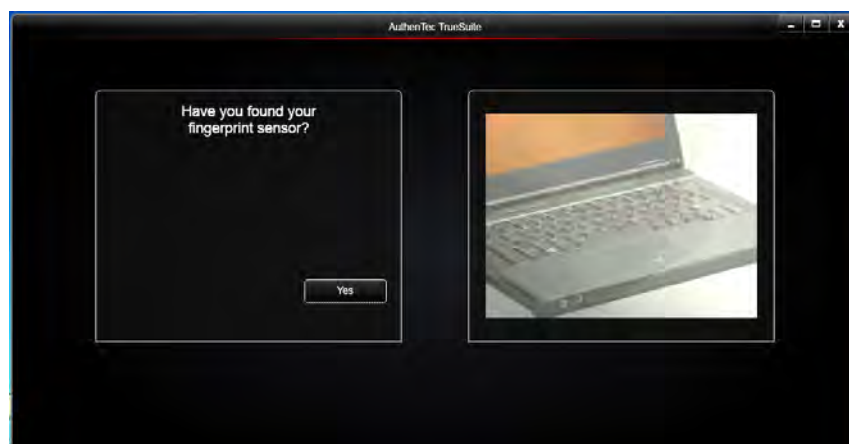
AuthenTec TrueSuite is a biometric software that protects the security of your data through the use of fingerprint authentication. When you enroll your fingerprints, your fingerprints are associated with your user name and password, and stored as a “user identity”.

To open AuthenTec TrueSuite, tap **Start > All Programs > AuthenTec TrueSuite > AuthenTec TrueSuite**.

Setting Up Your Fingerprints

To maximize your Tablet Computer security features, register your fingerprints for authentication.

1. Open the **AuthenTec TrueSuite** application (**Start > All Programs > AuthenTec TrueSuite > AuthenTec TrueSuite**). A screen wizard appears.

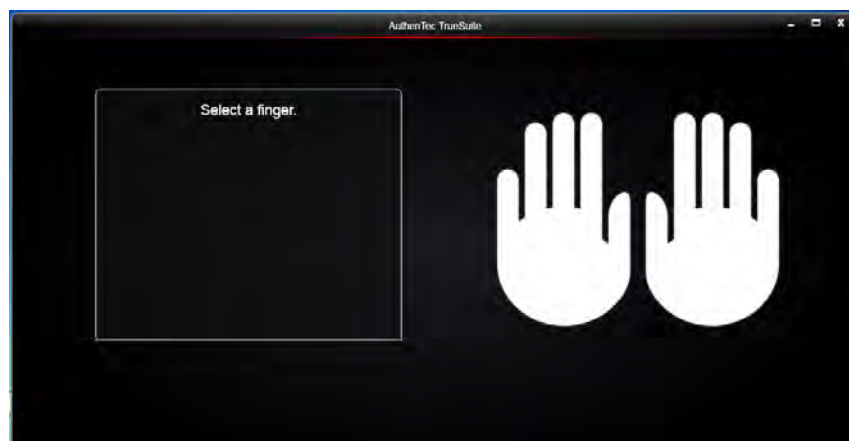


NOTE: The computer images shown on the screen are for reference only and may differ from your Tablet Computer.

2. Locate the fingerprint reader on your Tablet Computer (see “Device Overview” on page 1-3), then tap **Yes**. The screen below appears.



3. Tap **Yes**.
4. When the screen below appears, tap a finger that you want to register.



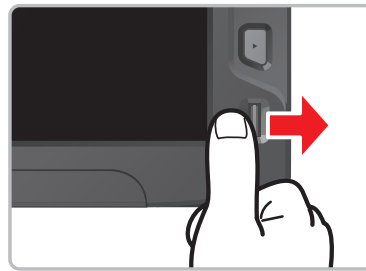
5. The tapped finger is marked by a blue icon.



- When registering your fingerprints for the first time, you will be prompted for a Windows Password. This password will be associated with your fingerprints as your “identity”. Enter a password, and tap **OK**.



- Slowly swipe the marked finger on the fingerprint reader from left to right direction.



The screen below appears. The red bar indicates the scanning process.




- Swipe the same finger again.



9. Swipe the same finger for the third time. When done, the screen below appears, notice that the blue icon turns green to indicate successful finger enrollment.



10. To register another finger, tap a finger and repeat steps 4 ~ 9. Or, tap  to complete the enrollment.
11. The software registration screen appears. Tap **Register Now** if you want to purchase the full version of AuthenTec TrueSuite or tap **Register Later** to continue using the version that came with your Tablet Computer.

trueSuite Register your software

Registering with AuthenTec gives you access to special offers and newsletters.

First Name

Last Name

Email

Nickname

Location

Website

Mobile

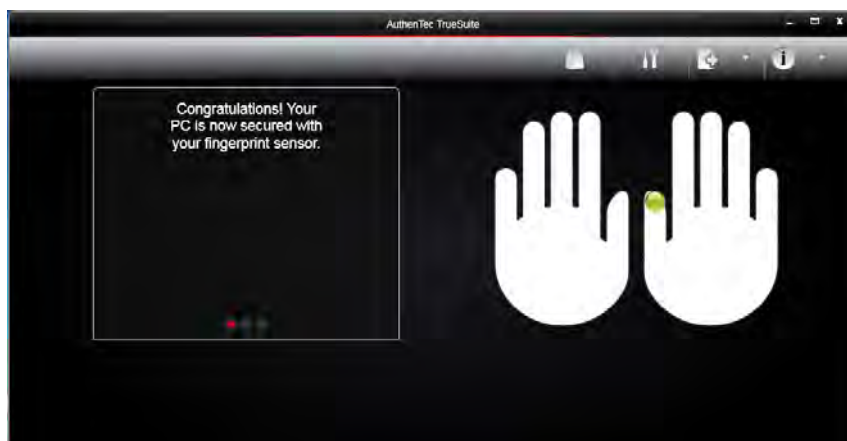
Skype

Would you like to receive special offers for AuthenTec products and services?

Yes ☐ No ☐

[Privacy Policy >>](#)

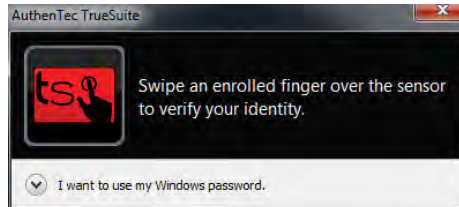
12. When the screen below appears, your fingerprint enrollment is complete.



Removing an Enrolled Fingerprint

Perform the following to remove the authentication of an enrolled fingerprint:

1. Open the **AuthenTec TrueSuite** application (**Start > All Programs > AuthenTec TrueSuite > AuthenTec TrueSuite**).
2. Swipe an enrolled fingerprint on the fingerprint reader.



NOTE: Alternatively, you can also enter the Windows Password by tapping I want to use my Windows password.


3. Tap and hold the marked fingerprint that you want to remove.
4. Tap **Delete finger**. The green icon is removed.



Log On to Windows by Fingerprints

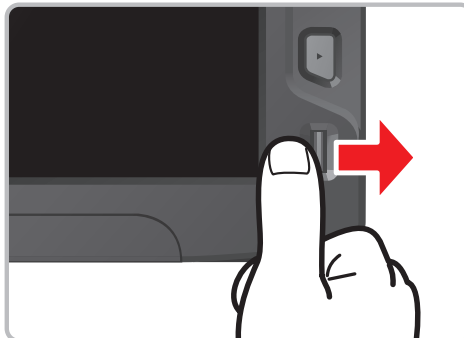
After enrolling your fingerprint, you can use the enrolled finger to log on to Windows.

Perform the following to use fingerprint authentication for Windows log on:

1. If the Tablet Computer has more than one account, tap the Fingerprint profile  icon. The screen below appears.



2. Slowly swipe an enrolled finger on the fingerprint reader from left to right direction. If the fingerprint matches, Windows opens.



Connecting Your Tablet Computer

You can extend the capabilities of your Tablet Computer by connecting other peripheral devices. When using a device, be sure to read the instructions accompanying the device together with the relevant section in this chapter.

This chapter gives guidelines on installing and using these devices:

- USB Device
- HDMI Device
- Audio Device
- Serial Devices

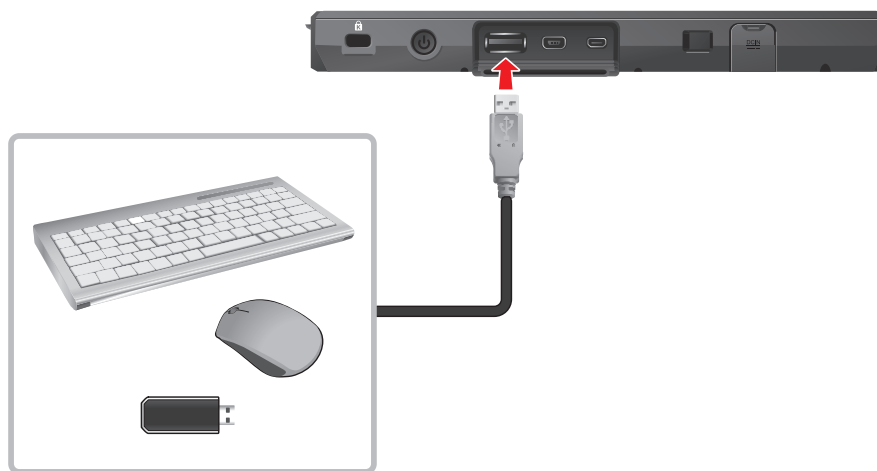
Connecting USB Devices

Your Tablet Computer has two USB ports: one USB (Type A) port and one mini USB port.

USB Port Connection

Use the USB port to connect USB devices, such as a flash disk drive, scanner, printer, keyboard, and mouse.

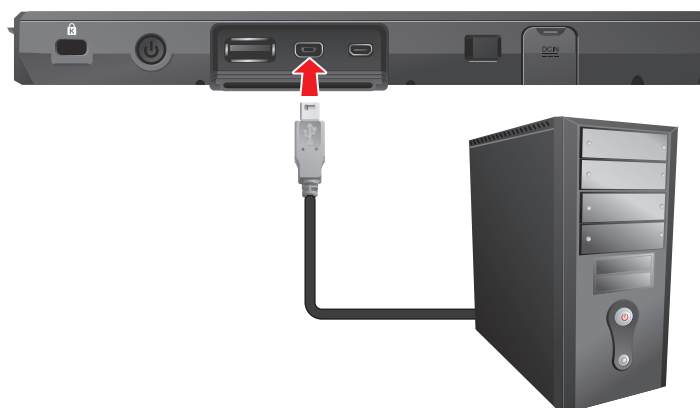
To connect a USB device, simply plug the device cable into the USB port of your Tablet Computer.



Mini USB Port Connection

Use the mini USB port to connect your Tablet Computer to another computer or notebook.

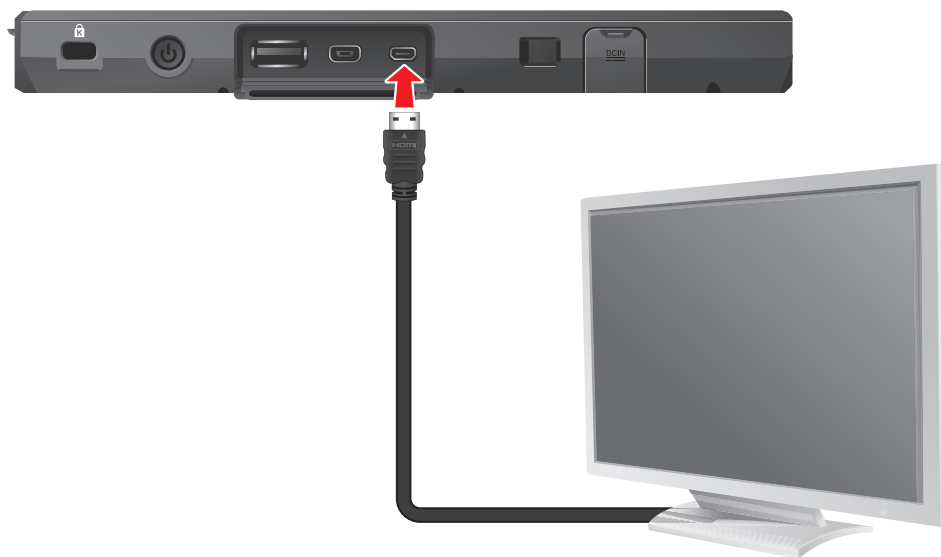
To connect, plug the mini USB cable connector to the mini USB port of your Tablet Computer and plug the other end of the USB cable to a computer or notebook.



Connecting HDMI Devices

Your Tablet Computer has one mini HDMI port for connecting HDMI devices, such as an external monitor.

To connect an HDMI device, simply plug the device cable into the mini HDMI connector of your Tablet Computer.



Connecting Audio Devices

Your Tablet Computer has one combo audio connector that supports both audio in and audio out devices. You can connect speakers, headphones, or an earphone set.

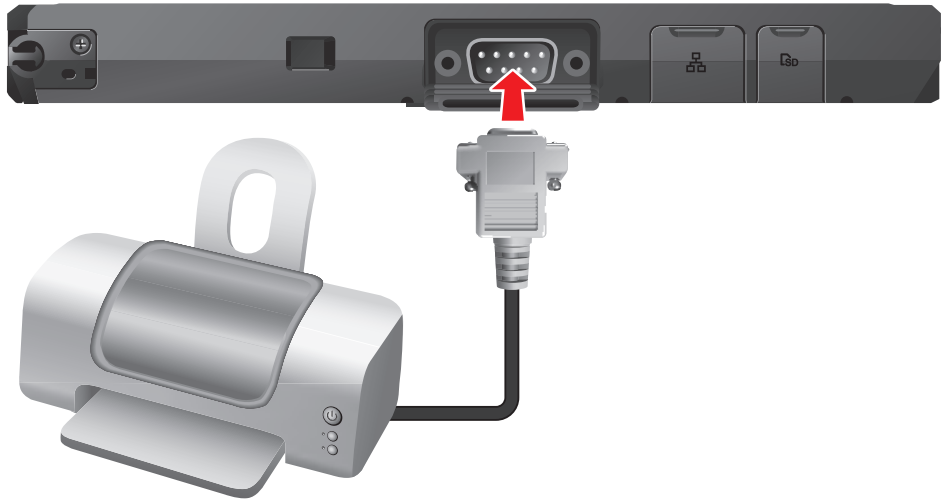
To connect an audio device, simply plug the device cable into the audio connector of your Tablet Computer.



Connecting Serial Devices

Your Tablet Computer has one RS232 port for connecting serial devices, such as barcode scanners, printers, among others.

To connect a serial device, simply plug the device cable into the RS232 port of your Tablet Computer. Attach the screws to secure the connection.



Managing Power

Your Tablet Computer operates either on external AC power or on battery power.

This chapter tells you how you can effectively manage power. To maintain optimal battery performance, it is important that you use the battery in the proper way.

The topics in this chapter include:

- How to charge the battery pack
- How to check the battery level
- What happens when the battery is low and what actions to take
- What is Power Management
- How to save power

Battery Pack

The operating time of a fully charged battery pack depends on how you use the Tablet Computer. When you use applications that often access peripherals, or when you stay connected to a wireless network, the operating time of the battery may be shortened.

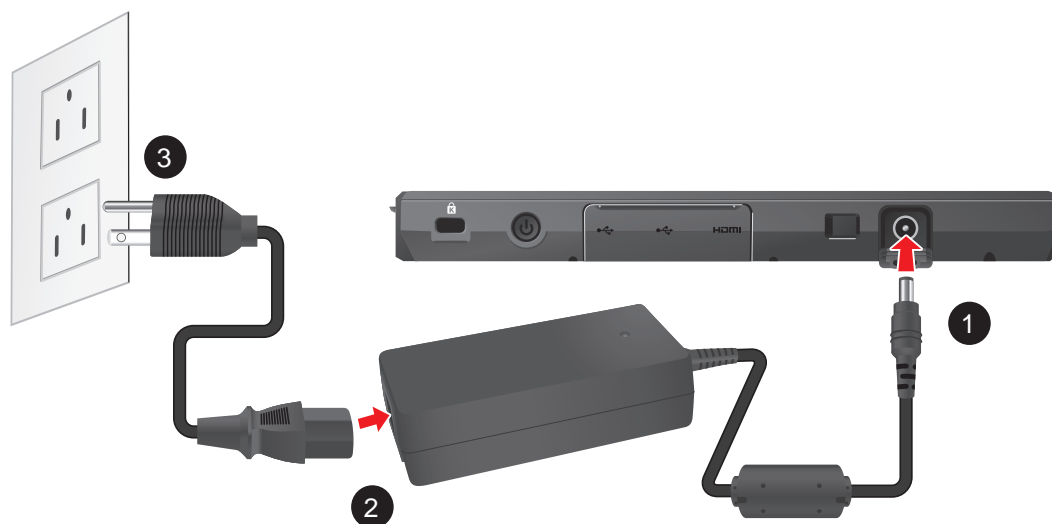
WARNING:

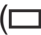
- Do not disassemble the battery pack. There are no user-serviceable parts inside. Doing so may present risk of exposure to harmful chemicals, explosion or fire.
- Contact your local waste disposal service provider regarding the disposal or recycling of used battery packs.

Charging the Battery Pack

To charge the battery pack, perform the following:

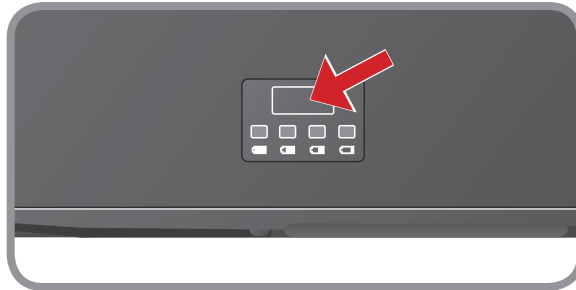
1. With the battery pack installed, plug the DC cord of the AC adapter into the power connector of the tablet computer.
2. Plug the female end of the AC power cord into the AC adapter.
3. Then plug the male end of the AC power cord into an electrical outlet.



The battery LED indicator () blinks green to indicate that charging is in progress. When the battery is fully charged, the battery LED indicator glows solid green.

Checking the Battery Level

To check the battery level, press the battery button of the battery pack. The battery LED lights up. The number of lit up LEDs indicates the battery level of the battery pack.



NOTE: The battery capacity indicator shows only an approximate battery level status.

Replacing the Battery Pack

If you rely on battery power for a long period of time, consider purchasing additional batteries from your dealer to use for backup.

To replace the battery pack, perform the following:

1. Shut down the Tablet Computer.
2. Disconnect the Tablet Computer from the AC power.
3. Place the Tablet Computer face down on a flat even surface.
4. Slide the battery locks to the unlock (🔓) position (A).
5. Slide the battery latches outward to the “open” position (B).



6. Insert your finger on the tab and then lift to remove the battery pack .



7. Install the replacement battery pack in place (see “Installing the Battery Pack” on page 1-14).

NOTE: You can still operate the Tablet Computer without a battery pack when it is connected to a power source. However, this action is not recommended as an empty battery pack slot exposes the Tablet Computer internal parts to environmental hazards, such as dust and water.

Power Management

The power management feature helps reduce power consumption which extends battery life.

Your Tablet Computer supports ACPI (Advanced Configuration and Power Interface) for power management. Power supply to different components is controlled on an as-needed basis. This allows maximum power conservation and performance at the same time.

Windows comes with pre-defined Power Options (**Balanced**, **Power Saver**, and **High Performance**) for you to select. You can access Power Options by tapping **Start > Control Panel > Power Options**. By default, your Tablet Computer is in **Balanced Mode**.

For detailed information on power management, see Windows Help.

Power Saving Tips

Here are some practical suggestions that you can do to maximize the operating time of the battery:

- Enable Power Management. Choose a power plan that saves power. A power plan is a collection of hardware and system settings that control how your Tablet Computer manages power.
- Decrease the LCD brightness to the lowest comfortable level.
- Shorten the length of time before Windows turns off the display.
- Many USB devices use power just by being connected. If you use a USB flash drive, unplug it when you are not using it.
- Deactivate the Wireless LAN function if you are not using it.
- Deactivate Bluetooth wireless feature if you are not using it.
- Turn off the Tablet Computer when you are not using it.

Expanding Your Tablet Computer

You can optimize the capabilities of your Tablet Computer by using other optional accessories.

This chapter gives guidelines on installing and using these accessories:

- Docking Station
- Expansion Module
- Extendable Battery Pack

Connecting the Docking Station

The Office Dock, a docking station designed for use with your Tablet Computer is available as an optional accessory.

The Office Dock has the following features:

- Docks the Tablet Computer with adjustable fangs up to 20° for comfortable viewing capabilities
- Charges the Tablet Computer battery pack
- Charges an additional battery pack with its extra battery bay
- Provides four USB ports
- Provides one RS232 port
- Provides one Line-In and one Line-out port
- Provides one RJ45 jack that supports up to 1GB LAN connection
- With two LED indicators



Docking the Tablet Computer

To dock your Tablet Computer, simply align the docking connectors of the Tablet Computer to the connectors on the Office Dock.



NOTE: For information on using the Office Dock, refer to the User Manual that comes with the device.

Installing the Expansion Module

Your Tablet Computer is designed to extend its functionality with the use of the Expansion Module. The Expansion Module provides a Smart Card Reader and a SIM card slot.

Perform the following to install the Expansion Module to your Tablet Computer:

1. Align the expansion connectors (pogo connectors) of your Tablet Computer to the connectors on the Expansion Module.



2. Tighten the screw to secure the Expansion Module to the Tablet Computer.



NOTE: For information on using the Expansion Module, refer to the User Manual that comes with the module.

Installing the Extendable Battery Pack

For longer battery life, you can use the Extendable Battery Pack which is available as an optional accessory.

Perform the following to install the Extendable Battery Pack to your Tablet Computer:

1. Place the Tablet Computer face down on a flat even surface.
2. Align and place the battery pack on its bay.



3. Tighten the screws to secure the Extendable Battery Pack to the Tablet Computer.



Checking the Battery Level

To check the battery level of the Extendable Battery Pack, press the battery button. The battery LED lights up. The number of lit up LEDs indicates the battery level of the battery pack.



Using BIOS Setup and System Recovery

BIOS Setup Utility is a program for configuring the BIOS (Basic Input/ Output System) settings of the tablet computer. The BIOS is a layer of software, called firmware, that translates instructions from other layers of software into instructions that the tablet computer hardware can understand. The BIOS settings are needed by your tablet computer to identify the types of installed devices and establish special features.

System Recovery reinstalls Windows to your system and configures it to s factory default settings.

The chapter describes how to use the BIOS Setup and System Recovery.

BIOS Setup

When to Use

You need to run BIOS Setup utility when:

- You see an error message on the screen requesting that you run BIOS Setup utility.
- You want to restore the factory default BIOS settings.
- You want to modify some specific hardware settings.
- You want to modify some specific settings to optimize the system performance.

Starting BIOS Setup Utility

A USB keyboard is required to access, move around, and make selections in the BIOS Setup Utility.

1. Before turning on the Tablet Computer, connect the USB keyboard to the USB port of the Tablet Computer.
2. Power on the Tablet Computer.
3. When the system starts up and the post screen logo appears, quickly press F2 or the Delete key to enter the BIOS Setup Utility.

How to Use

NOTE:

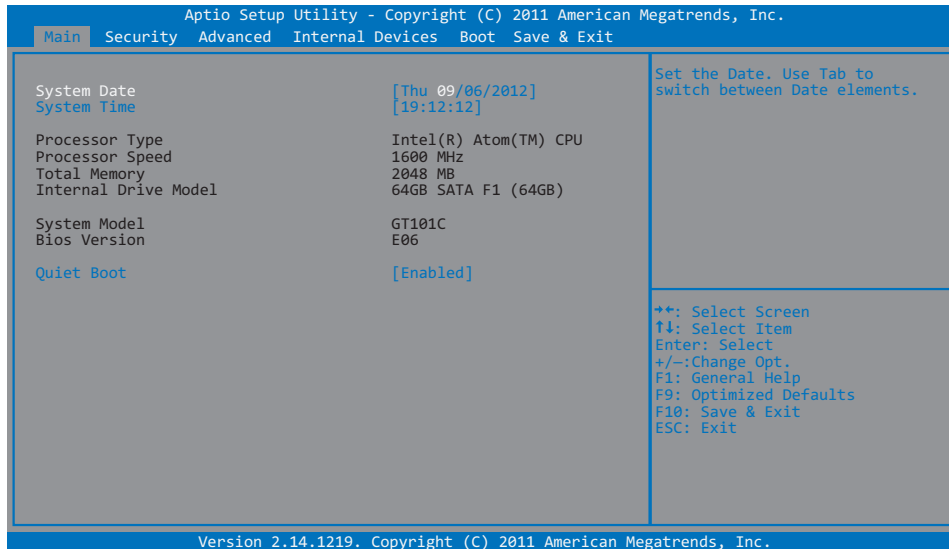
- The BIOS Setup Utility screens shown in this chapter are for reference only. The actual items or settings on your Tablet Computer may differ.
- The settings you select in your operating system might override similar settings in BIOS Setup Utility.

Key	Function
◀ / ▶	Selects a menu title.
▲ / ▼	Selects an item or option.
Enter	<ul style="list-style-type: none">• Brings up the submenu, if available• When an item is selected, opens or closes the options window• Goes to the next field when an item has multiple fields, such as System Date.
+ / -	Changes the option or adjusts the value.
F1	Displays help.
F9	Optimized Defaults.
F10	Save and exit BIOS.
Esc	Returns to the previous menu if in a submenu or Exit BIOS.

BIOS Menu

Main Menu

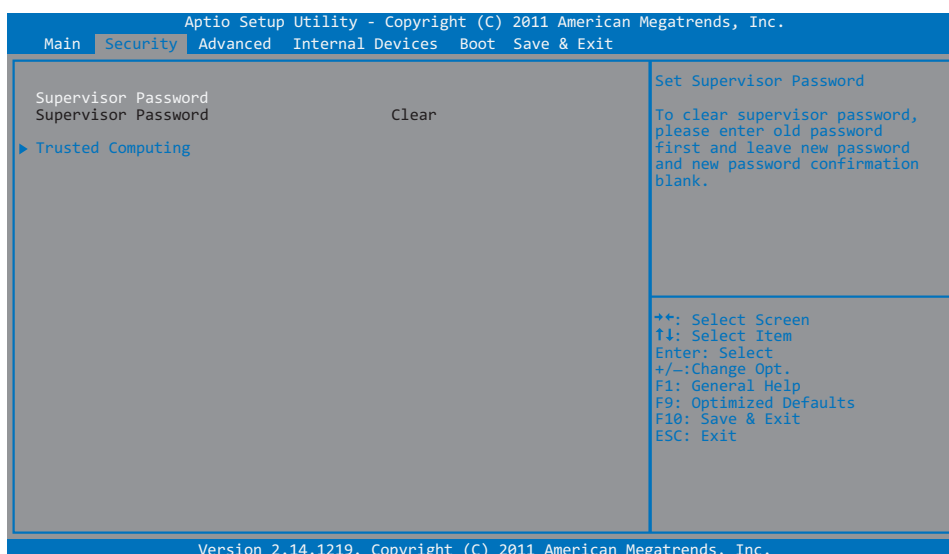
The Main menu contains the system date and time settings and shows the basic system information.



- **System Date:** Sets the system date.
- **System Time:** Sets the system time.
- **Quiet Boot:** Enables or disables the Quiet Boot option.

Security Menu

The Security menu contains the security settings, such as configuring the Supervisor Password and Trusted Computing.



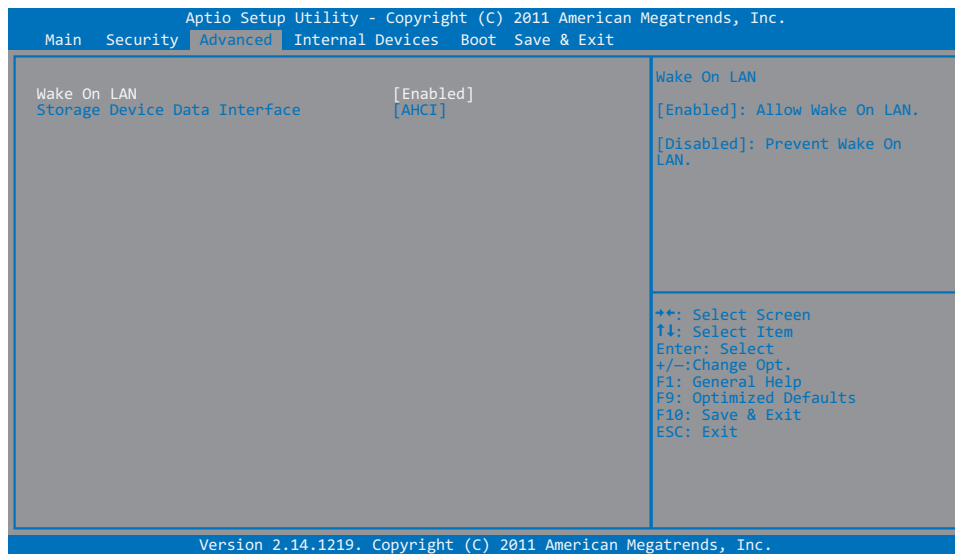
- **Supervisor Password:** Configures the supervisor password which will be required before you can enter the BIOS Setup Utility. When the Supervisor Password is configured, the word "Set" is shown on the screen. If the

Supervisor Password is not configured, the word “Clear” is displayed.

- **Trusted Computing:** Enables or disables BIOS support for TPM (Trusted Platform Module) security devices.

Advanced Menu

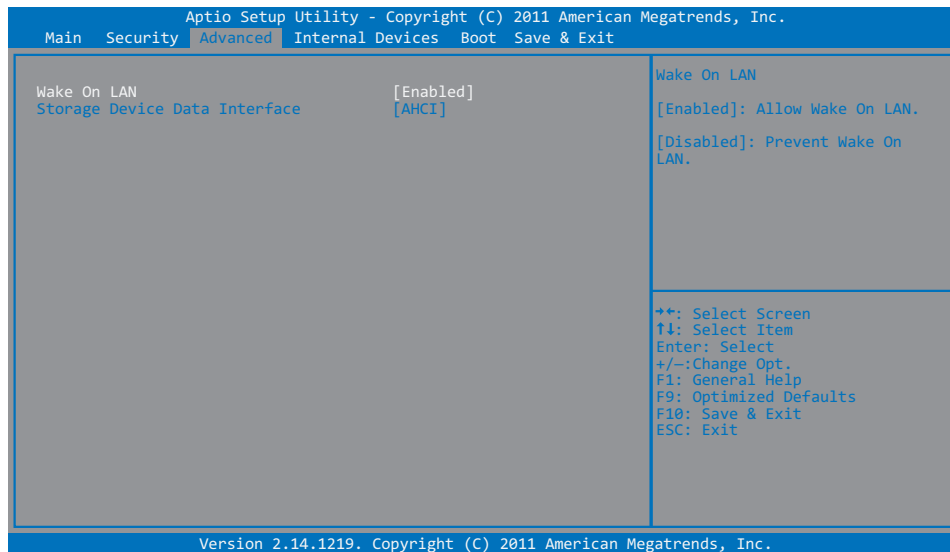
The Advanced menu contains the advanced settings, such as Wake On LAN and Storage Device Data Interface settings.



- **Wake On Lan:** Enables or disables the device to wake on LAN.
- **Storage Device Data Interface:** Selects how the hard disk controller operates, options are **IDE** or **AHCI** mode.

Internal Devices Menu

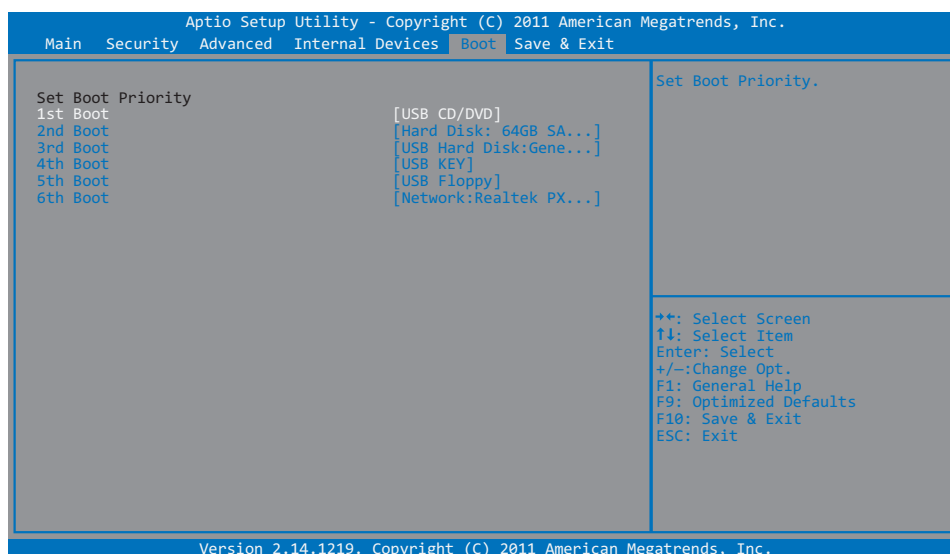
The Internal Devices menu enables or disables the built-in devices in the Tablet Computer.



- **Front Camera:** Enables or disables the front camera.
- **Rear Camera:** Enables or disables the rear camera.
- **Fingerprint Reader:** Enables or disables the fingerprint reader.
- **WWAN:** Enables or disables the WWAN antenna.
- **WLAN/BT Module:** Enables or disables the WLAN/BT antenna.
- **GPS:** Enables or disables the GPS antenna.

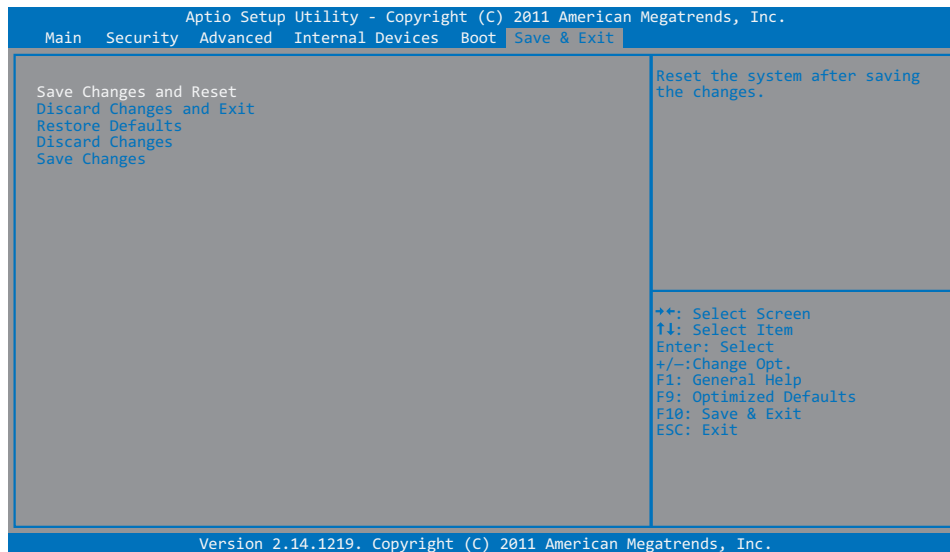
Boot Menu

The Boot menu sets the boot order of devices.



Save & Exit Menu

The Save & Exit menu displays ways of exiting BIOS Setup Utility. After modifying the settings, you must save and exit for the changes to take effect.



- **Exit Saving Changes:** Saves the changes you have made and exits BIOS Setup Utility.
- **Exit Discarding Changes:** Exits BIOS Setup Utility without saving the changes you have made.
- **Load Setup Defaults:** Restores the default values of all items.
- **Discard Changes:** Restores the previous values of all items.
- **Save Changes:** Saves the changes you have made.

Maintenance, Troubleshooting and Specifications

This chapter covers the following topics:

- How to care for your Tablet Computer
- Troubleshoot your Tablet Computer
- Tablet Computer Specifications

Taking Care of the Tablet Computer

Location Guidelines

- Keep the tablet computer at least 13 cm (5 inches) away from electrical appliances that can generate a strong magnetic field such as a TV, refrigerator, motor, or a large audio speaker.

General Guidelines

- Do not place heavy objects on top of the tablet computer as this may damage the display.
- The screen surface is easily scratched. Use the screen protector film to protect it. Do not use paper towels to clean the display but use the included cleaning cloth. Avoid touching it with a pen or pencil.
- To maximize the life of the backlight in the display, allow the backlight to automatically turn off as a result of power management. Avoid using a screen saver or other software that prevents the power management from working.

Cleaning Guidelines

- Use a soft cloth moistened with water or a non-alkaline detergent to wipe the exterior of the tablet computer.
- Gently wipe the display with a soft, lint-free cloth. Do not use alcohol or detergent on the display.

Touchscreen Guidelines

- Use your finger or the included stylus on the display. Using a sharp or metallic object may cause scratches and damage the display, thereby causing errors.
- Use a soft cloth to remove dirt on the display. The touchscreen surface has a special protective coating that prevents dirt from sticking to it. Not using a soft cloth may cause damage to the special protective coating on the touchscreen surface. To clean off hard to remove dirt, blow some steam on the particular area and gently wipe away using a soft cloth.
- Do not use excessive force on the display. Avoid placing objects on top of the display as this may cause the glass to break.

When there is a noticeable discrepancy in the operation of the touchscreen function (stylus touch does not correlate to the proper location on the screen), recalibrate the touchscreen display (see “Calibrating the Screen” on page 2-3).

Troubleshooting

When you encounter problems when using the Tablet Computer, try the following troubleshooting tips first to detect and solve the problem. If the problem persists, contact customer support.

Problem	Solution
The battery is not charging.	<ul style="list-style-type: none">• Make sure the AC adapter is properly connected.• Make sure the battery is not too hot or too cold.• Make sure the battery pack is installed correctly.• Make sure the battery terminals are clean.
Nothing appears on the screen.	<ul style="list-style-type: none">• The Tablet Computer may be in sleep mode. Press the power button to wake up the display.• The brightness level may be too low. Increase brightness (see “Adjusting Screen Brightness” on page 2-6).
The screen suddenly turns blank and the power indicator goes off.	<ul style="list-style-type: none">• Make sure the AC adapter is properly connected.• If using a battery pack, the battery pack may be depleted, replace or charge the battery.
I cannot use the wireless LAN feature.	<ul style="list-style-type: none">• Make sure that wireless LAN feature is turned on.
Wireless LAN signal quality is poor.	<ul style="list-style-type: none">• The Tablet Computer may be out of range. Move your Tablet Computer closer to the access point or another wireless LAN device associated with it.• Check if your surroundings have interferences, such as microwave ovens, cordless phones. Move the Tablet Computer away from objects causing interference.
I cannot connect to another wireless LAN device.	<ul style="list-style-type: none">• Make sure that wireless LAN feature is turned on.• Make sure that the SSID setting is the same for every wireless LAN device in the network.• Restart the Tablet Computer.• Make sure the IP address or subnet mask setting is correct.

Problem	Solution
I cannot connect to another device with Bluetooth.	<ul style="list-style-type: none"> • Make sure that both devices have Bluetooth turned on. • Make sure that the distance between the two devices is within 10 meters and there are no walls or large obstructions between the devices. • Make sure that both devices are turned on and are configured to be discoverable. • Make sure that both devices are compatible.
No sound is produced.	<ul style="list-style-type: none"> • Adjust the volume of the Tablet Computer (see “Adjusting Volume” on page 2-6). • If using an external audio device, make sure that the cable is properly connected.

Tablet Computer Specifications

Technical Specifications	
Processor	Intel® Cedar Trail N2600 (1.6GHz)
BIOS	<ul style="list-style-type: none"> • AMI Aptio® • TAA socket
Chipset	<ul style="list-style-type: none"> • Intel Tiger Point • NM10
Main Memory	DDR3 2GB
Display	<ul style="list-style-type: none"> • 10.1" backlight LED • 1280 x 800
Graphics	<ul style="list-style-type: none"> • Intel Cedar View SGX545 • SGX545@400MHz
Camera	<ul style="list-style-type: none"> • Back Cam CMOS, 5.0MP with auto focus • Front Cam CMOS, 2MP with fixed focus
Storage	32/64/128GB
Card Slot	Micro SD Card Reader
Connectivity	<ul style="list-style-type: none"> • WLAN: 801.11 b/g/n, half-size mini PCI-E card with BT • WWAN: Gobi 3000
LED Status Indicator	<ul style="list-style-type: none"> • Heater On • RF On/Off • Battery Full / Charging / Low • Power On
Interface	<ul style="list-style-type: none"> • 3.5 Φ Audio Jack x 1 • HDMI Type D x 1 • Micro SD Card x 1 • Mini-SIM Card x 1 • USB Type A x 1 • USB Mini-A x 1 • RJ-45 x 1 • Expansion Port x 1 • Docking Port x 1
Antenna	<ul style="list-style-type: none"> • WWAN Main • WLAN x 2 • GPS
Audio	<ul style="list-style-type: none"> • Single Digital Mic • 1 x Speaker, 200Hz ~ 16KHz
Power Management	ACPI 3.0 Supported

Technical Specifications	
Battery Bridge Battery	Lithium-Polymer Battery Pack with power saving features activated
AC Adapter	AC 100 ~ 240V, 50 ~ 60Hz, DC 12V, 60W

Physical Specifications	
Dimensions (WxHxT)	290 x 195 x < 21 mm
Weight	< 1.2 Kg (including battery)
Security	<ul style="list-style-type: none"> • Infineon chip on board • Fingerprint Reader Swipe-type biometric sensor • Kensington Lock

Regulatory Information

This appendix provides regulatory statements and safety notices about your Tablet Computer.

NOTE: Marking labels located on the exterior of your Tablet Computer indicate the regulations that your model complies with. Check the marking labels and refer to the corresponding statements in this appendix. Some notices apply to specific models only.

Important Information

WARNING: To reduce the risk of fire or electric shock, do not expose this appliance to rain or moisture. **MAKE SURE** the power cord is **UNPLUGGED FROM THE WALL OUTLET** IF IT WILL NOT BE USED FOR AN EXTENDED PERIOD OF TIME. To completely disengage power from the unit, **BE SURE TO UNPLUG THE POWER CORD FROM THE AC OUTLET**. Do not remove the back cover or any internal parts. Contact qualified personnel if repairs are necessary.



SA1965

ELECTRICAL SAFETY WARNING

Used for instructions intended to alert the user to the risk of a fatal electric shock or serious injury in case of incorrect use of the unit.



SA1966

WARNING

Used for instructions intended to alert the user to the risk of death or serious injury in case of incorrect use of the unit.

ATTENTION: Pour réduire le risque d'incendie ou de choc électrique ne pas exposer l'appareil à la pluie ou à l'humidité FAIRE le cordon électrique est DÉBRANCHÉ DE LA PRISE MURALE DANS UN DELAI DE PROLONGER INACTIVITÉ. De se désengager totalement LE POUVOIR DE L'UNITÉ, S'IL VOUS PLAÎT DEBRANCHER LE CORDON D'ALIMENTATION DE LA PRISE AC. NE PAS Remove le capot arrière, pas de PIÈCES À L'INTÉRIEUR. Contactez un personnel qualifié S'il faut le réparer.



SA1965

ELECTRIQUE AVERTISSEMENT

Sert aux instructions destinées à alerter l'utilisateur d'un CHOC ÉLECTRIQUE mortel ou de blessure grave en cas d'utilisation incorrecte de l'unité.



SA1966

AVERTISSEMENT

Sert aux instructions destinées à alerter l'utilisateur d'un risque mortel ou de blessure grave en cas d'utilisation incorrecte de l'unité.

Safety Information (EN)

Follow and adhere to all warnings and instructions on the screen. For your safety, please read all safety and operating instructions before using the monitor. Keep this manual for future reference.

1. Carefully read all recommendations and precautions for use before using this product.
2. All recommendations and precautions for use should be retained so that they can be referred to necessary.
3. Read and be sure to understand all warnings listed in the precautions.
4. Follow all operating precautions when using this product.
5. This product should not be used near water such as bathtubs, sinks, swimming pools, wet basements etc..
6. Use only a dry cloth to clean this product.
7. Do not block any ventilation openings. Do not place the product against a wall or in an enclosed space as doing so might impede the flow of cooling air.
8. Do not place the product near any heat sources such as radiators, warm air intakes, stoves or other heat-generating devices (including amplifiers or other heat producing equipment).
9. Do not disregard the safety that a polarized or grounded connection can provide. A polarized connection consists of two plugs, one of which is larger than the other. A grounded connection has two blades and a third one that is grounded. If the main plug provided cannot be inserted into your outlet, consult an electrician to replace your obsolete outlet.
10. Protect the power cord from being crushed or pinched, particularly in the area of the plugs, any receptacles used, and the point of exit from the apparatus. Do not break off the ground pin of the power cord.
11. Use only accessories specified by the manufacturer.
12. Use only with its transport carriage, stand, tripod, console or table specified by the manufacturer or sold with the product. When using a carriage, move the carriage assembly with the product carefully to avoid damage from falling over.
13. Unplug this apparatus during lightning storms or when it is not being used for long periods.
14. Refer all servicing to qualified service personnel. A technical intervention is required when the apparatus has been damaged in any way, for example if the power cord or plug is damaged, liquid has been spilled or objects have fallen inside the unit, if the product has been exposed to rain or moisture, if it does not operate normally or if it has been dropped.



Safety Information (FR)

Suivez et respectez tous les avertissements et instructions figurant sur l'écran. Pour votre sécurité, s'il vous plaît lire toutes les consignes de sécurité et de fonctionnement avant d'utiliser le moniteur. Gardez ce manuel pour référence future.

1. Lire avec attention toutes les recommandations et précautions d'emploi avant d'utiliser ce produit.
2. Toutes les recommandations et précautions d'emploi doivent être conservées afin de pouvoir s'y reporter si nécessaire.
3. Lire et comprendre tous les avertissements énumérés dans les précautions d'emploi.
4. Suivre toutes les précautions d'emploi pour utiliser ce produit.
5. Ce produit ne doit pas être utilisé près d'eau, comme par exemple baignoires, éviers, piscine, sous-sol humides ... Etc.
6. Utiliser exclusivement un chiffon sec pour nettoyer ce produit.
7. Ne bloquer aucune ouverture de ventilation. Ne pas placer le produit tout contre un mur ou dans une enceinte fermée, cela gênerait le flux d'air nécessaire au refroidissement.
8. Ne pas placer le produit près de toute source de chaleur telle que radiateurs, arrivées d'air chaud, fourneaux ou autres appareils générant de la chaleur (incluant les amplificateurs producteurs de chaleur) .
9. Ne pas négliger la sécurité que procure un branchement polarisé ou avec raccordement à la terre, Un branchement polarisé comprend deux fiches dont l'une est plus large que l'autre. Un branchement à la terre comprend deux fiches plus une troisième reliée à la terre. Si la fiche secteur fournie ne s'insère pas dans votre prise de courant. consulter un 'électricien afin de remplacer votre prise obsolète.
10. Protéger le cordon d'alimentation de tout écrasement ou pincement, particulièrement au niveau des fiches, des réceptacles utilisés et à l'endroit de sortie de l'appareil. Ne pas casser la fiche de terre du cordon d'alimentation.
11. Utiliser uniquement les accessoires spécifiés par le constructeur.
12. Utiliser uniquement avec le chariot de transport, le support, le trépied, la console ou la table spécifiés par le constructeur ou vendus avec l'appareil. Lors de l'utilisation d'un chariot, bouger avec précaution l'ensemble chariotlappareil afin d'éviter les dommages d'un renversement.
13. Débrancher cet appareil lors d'orages ou s'il n'est pas utilisé pendant une longue période.
14. Pour toutes interventions techniques s'adresser à un technicien qualifié. L'intervention technique est nécessaire lorsque l'appareil a été endommagé de n'importe quelle façon, comme par exemple si le cordon secteur ou sa fiche sont détériorés, si du liquide a coulé ou si des objets sont tombés à l'intérieur de l'appareil, si l'appareil a été exposé à la pluie ou à l'humidité, s'il ne fonctionne pas normalement ou s'il est tombé.



About the Batteries

Nordic Lithium Cautions (for lithium-ion batteries)

CAUTION!

Danger of explosion if battery is incorrectly replaced. Replace only with the same or equivalent type recommended by the manufacturer. Dispose of used batteries according to the manufacturer's instructions. (English)

ATTENTION!

Il y a danger d'explosion s'il y a remplacement incorrect de la batterie. Remplacer uniquement avec une batterie du même type ou d'un type équivalent recommandé par le constructeur. Mettre au rebut les batteries usagées conformément aux instructions du fabricant. (French)

About the Adapter

- Use only the supplied AC adapter (Rating: Input DC 12V, 5.0A). Use of another type of AC adapter will result in malfunction and/or danger.
- Do not use the adapter in a high moisture environment. Never touch the adapter when your hands or feet are wet.
- Allow adequate ventilation around the adapter when using it to operate the device or charge the battery. Do not cover the AC adapter with paper or other objects that will reduce cooling. Do not use the AC adapter while it is inside a carrying case.
- Connect the adapter to a proper power source. The voltage requirements are found on the product case and/or packaging.
- Do not use the adapter if the cord becomes damaged.
- Do not attempt to service the unit. There are no serviceable parts inside. Replace the unit if it is damaged or exposed to excess moisture.

FCC Regulations

This device complies with part 15 of the FCC Rules. Operation is subject to the following two conditions: (1) This device may not cause harmful interference, and (2) this device must accept any interference received, including interference that may cause undesired operation.

This device has been tested and found to comply with the limits for a Class B digital device, pursuant to Part 15 of the FCC Rules. These limits are designed to provide reasonable protection against harmful interference in a residential installation. This equipment generates, uses and can radiate radio frequency energy and, if not installed and used in accordance with the instructions, may cause harmful interference to radio communications. However, there is no guarantee that interference will not occur in a particular installation. If this equipment does cause harmful interference to radio or television reception, which can be determined by turning the equipment off and on, the user is encouraged to try to correct the interference by one or more of the following measures:

- Reorient or relocate the receiving antenna.
- Increase the separation between the equipment and receiver.
- Connect the equipment into an outlet on a circuit different from that to which the receiver is connected.
- Consult the dealer or an experienced radio/TV technician for help.

Changes or modifications not expressly approved by the party responsible for compliance could void the user's authority to operate the equipment.

Operation on the 5.15-5.25GHz frequency band is restricted to indoor use only. The FCC requires indoor use for the 5.15-5.25GHz band to reduce the potential for harmful interference to co-channel Mobile Satellite Systems. Therefore, it will only transmit on the 5.25-5.35 GHz, 5.47-5.725 GHz and 5.725 –5.850 GHz band when associated with an access point (AP).

RF Exposure Information (SAR)

This device is compliance with SAR for general population /uncontrolled exposure limits in ANSI/IEEE C95.1-1999 and had been tested in accordance with the measurement methods and procedures specified in OET Bulletin 65 Supplement C.

This equipment complies with FCC RF radiation exposure limits set forth for an uncontrolled environment. This device was tested for operations with the device contacted directly to the human body to the back side of the EUT. To maintain compliance with FCC RF exposure compliance requirements, avoid direct contact to the transmitted antenna during transmitting.

IC Regulations

This device complies with Industry Canada license-exempt RSS standard(s). Operation is subject to the following two conditions:

- (1) this device may not cause interference, and
- (2) this device must accept any interference, including interference that may cause undesired operation of the device.

Le présent appareil est conforme aux CNR d'Industrie Canada applicables aux appareils radio exempts de licence. L'exploitation est autorisée aux deux conditions suivantes:

- (1) l'appareil ne doit pas produire de brouillage, et
- (2) l'utilisateur de l'appareil doit accepter tout brouillage radioélectrique subi, même si le brouillage est susceptible d'en compromettre le fonctionnement."

This Class B digital apparatus complies with Canadian ICES-003

Cet appareil numérique de la classe B est conforme à la norme NMB-003 du Canada.

The device could automatically discontinue transmission in case of absence of information to transmit, or operational failure. Note that this is not intended to prohibit transmission of control or signaling information or the use of repetitive codes where required by the technology.

The device for the band 5150-5250 MHz is only for indoor usage to reduce potential for harmful interference to co-channel mobile satellite systems; the maximum antenna gain permitted (for devices in the bands 5250-5350 MHz and 5470-5725 MHz) to comply with the e.i.r.p. limit; and The maximum antenna gain permitted (for devices in the band 5725-5850 MHz) to comply with the e.i.r.p. limits specified for point-to-point and non point-to-point operation as appropriate, as stated in section A9.2(3). In addition, High-power radars are allocated as primary users (meaning they have priority) of the band 5250-5350 MHz and this radar could cause interference and/or damage to LE-LAN devices.

The County Code Selection feature is disabled for products marketed in the US/ Canada. For product available in the USA/ Canada markets, only channel 1~11 can be operated. Selection of other channels is not possible.

Important Note

IC Radiation Exposure Statement

This EUT is compliance with SAR for general population/uncontrolled exposure limits in IC RSS-102 and had been tested in accordance with the measurement methods and procedures specified in IEEE 1528.

