



# A Test Lab Techno Corp.

Changan Lab : No. 140 -1, Changan Street, Bade City, Taoyuan County, Taiwan R.O.C.

Tel : 886-3-271-0188 / Fax : 886-3-271-0190



## SAR EVALUATION REPORT

Test Report No.	:	1009FS13
Applicant	:	Atheros Communications Inc.
Product Type	:	802.11n-BT COMBO CARD
Trade Name	:	ATHEROS
Model Number	:	AR5B195
Dates of Test	:	Sep. 02 ~ Sep. 03, 2010
Test Environment	:	Ambient Temperature : $22 \pm 2^{\circ}\text{C}$ Relative Humidity : 40 - 70 %
Test Specification	:	Standard C95.1-2005 IEEE Std. 1528-2003 2.1093;FCC/OET Bulletin 65 Supplement C [July 2001] RSS-102 Issue 3 (June 2009) KDB 248227 D01 SAR meas for 802.11 a b g v01r02 KDB 447498 "RF Exposure Procedures and Equipment Authorization Policies" KDB616217: 616217 SAR for Laptop with Screen Ant v01r01
Max. SAR	:	1.430 W/kg Body SAR
Test Lab Location	:	Chang-an Lab



1. The test operations have to be performed with cautious behavior, the test results are as attached.
2. The test results are under chamber environment of A Test Lab Techno Corp. A Test Lab Techno Corp. does not assume responsibility for any conclusions and generalizations drawn from the test results with regard to other specimens or samples.
3. The measurement report has to be written approval of A Test Lab Techno Corp. It may only be reproduced or published in full. This report shall not be reproduced except in full, without the written approval of A Test Lab Techno Corp. The test results in the report only apply to the tested sample.

Sam Chuang  
Approve Signer

Sep. 07, 2010

Alex Wu  
Testing Engineer

Sep. 07, 2010



# Contents

1. Description of Equipment Under Test (EUT).....	3
2. Introduction .....	4
3. SAR Definition.....	4
4. SAR Measurement Setup .....	5
5. System Components.....	7
5.1 DASY5 E-Field Probe System.....	7
5.2 Data Acquisition Electronic (DAE) System.....	10
5.3 Robot.....	10
5.4 Measurement Server.....	10
5.5 Device Holder for Transmitters.....	11
5.6 Phantom - SAM v4.0 .....	11
5.7 Data Storage and Evaluation.....	12
6. Test Equipment List.....	15
7. Tissue Simulating Liquids .....	16
7.1 Ingredients.....	17
7.2 Recipes.....	17
7.3 Liquid Confirmation .....	18
8. Measurement Process .....	19
8.1 Device and Test Conditions.....	19
8.2 Test Mode Description.....	20
8.3 Simultaneous Transmitting Evaluate.....	20
8.4 System Performance Check.....	21
8.5 Dosimetric Assessment Setup .....	23
8.6 Spatial Peak SAR Evaluation .....	25
9. Measurement Uncertainty .....	26
10. SAR Test Results Summary .....	28
10.1 WLAN 802.11b Body SAR.....	28
10.2 WLAN 802.11n (2.4G)_HT20 Body SAR .....	30
10.3 WLAN 802.11n (2.4G)_HT40 Body SAR .....	31
10.4 Std. C95.1-2005 RF Exposure Limit.....	32
11. Conclusion .....	33
12. References.....	33
Appendix A - System Performance Check.....	34
Appendix B - SAR Measurement Data.....	36
Appendix C - Calibration.....	47



## 1. Description of Equipment Under Test (EUT)

Applicant	:	Atheros Communications Inc.
Applicant Address	:	1700 Technology Drive, San Jose, CA 95110
Manufacturer	:	Atheros Communications Inc.
Manufacturer Address	:	1700 Technology Drive, San Jose, CA 95110
Product Type	:	802.11n-BT COMBO CARD
Trade Name	:	ATHEROS
Model Number	:	AR5B195
FCC ID	:	PPD-AR5B195
Tx Frequency	:	IEEE 802.11b / IEEE 802.11g: 2412MHz~2462MHz Draft 802.11n 2.4GHz Standard-20MHz: 2412MHz~2462MHz Draft 802.11n 2.4GHz Wide-40MHz: 2422MHz~2452MHz
RF Conducted Power (Time-Avg.)	:	IEEE 802.11b: 0.059 W / 17.70 dBm IEEE 802.11g: 0.050 W / 17.00 dBm Draft 802.11n 2.4GHz Standard-20MHz: 0.049W / 16.90 dBm Draft 802.11n 2.4GHz Wide-40MHz: 0.034 W / 15.27 dBm
Max. SAR Measurement	:	1.430 W/kg Body SAR
Antenna Type	:	PIFA Type
Antenna-to-user separation distances	:	5.45 mm from WLAN antenna-to-user
Antenna Gain	:	1.18 dBi
Device Category	:	Portable Device
RF Exposure Environment	:	General Population / Uncontrolled
Battery Option	:	Standard
Application Type	:	Certification
Host Notebook PC	:	Trade Name: PEGATRON Model Number: Lucid Manufacturer (1): Pegatron Corporation 5F, No. 76, Ligong St., Beitou District, Taipei City 112, Taiwan (R.O.C.) Manufacturer (2): Maintek Computer (Suzhou) Co., Ltd 233 Jin Feng Road, Suzhou City New District, Jiangsu Province, China Manufacturer (3): Protek (Shanghai) Limited No. 3768 Xiu Yan Rd., Nanhui District, Shanghai, China

This wireless portable device has been shown to be capable of compliance for localized specific absorption rate (SAR) for uncontrolled environment / general population exposure limits specified in Standard C95.1-2005 / RSS-102 Issue 3 (June 2009) and had been tested in accordance with the measurement procedures specified in IEEE Std. 1528-2003.



## 2. Introduction

The A Test Lab Techno Corp. has performed measurements of the maximum potential exposure to the user of **Atheros Communications Inc. Trade Name : ATHEROS Model(s) : AR5B195**. The test procedures, as described in American National Standards, Institute C95.1 - 2005 [ 1 ], FCC/OET Bulletin 65 Supplement C [July 2001] and RSS-102 Issue 3 (June 2009) were employed and they specify the maximum exposure limit of 1.6mW/g as averaged over any 1 gram of tissue for portable devices being used within 20cm between user and EUT in the uncontrolled environment. A description of the product and operating configuration, detailed summary of the test results, methodology and procedures used in the equipment used are included within this test report.

## 3. SAR Definition

Specific Absorption Rate (SAR) is defined as the time derivative (rate) of the incremental energy (dw) absorbed by (dissipated in) an incremental mass (dm) contained in a volume element (dv) of a given density ( $\rho$ ). It is also defined as the rate of RF energy absorption per unit mass at a point in an absorbing body (see Figure 2).

### **SAR Mathematical Equation**

$$SAR = \frac{d}{dt} \left( \frac{dw}{dm} \right) = \frac{d}{dt} \left( \frac{dw}{\rho dv} \right)$$

**SAR is expressed in units of Watts per kilogram (W/kg)**

$$SAR = \frac{\sigma E^2}{\rho}$$

Where :

$\sigma$  = conductivity of the tissue (S/m)

$\rho$  = mass density of the tissue (kg/m<sup>3</sup>)

$E$  = RMS electric field strength (V/m)

### **\*Note :**

The primary factors that control rate of energy absorption were found to be the wavelength of the incident field in relations to the dimensions and geometry of the irradiated organism, the orientation of the organism in relation to the polarity of field vectors, the presence of reflecting surfaces, and whether conductive contact is made by the organism with a ground plane [ 2 ]

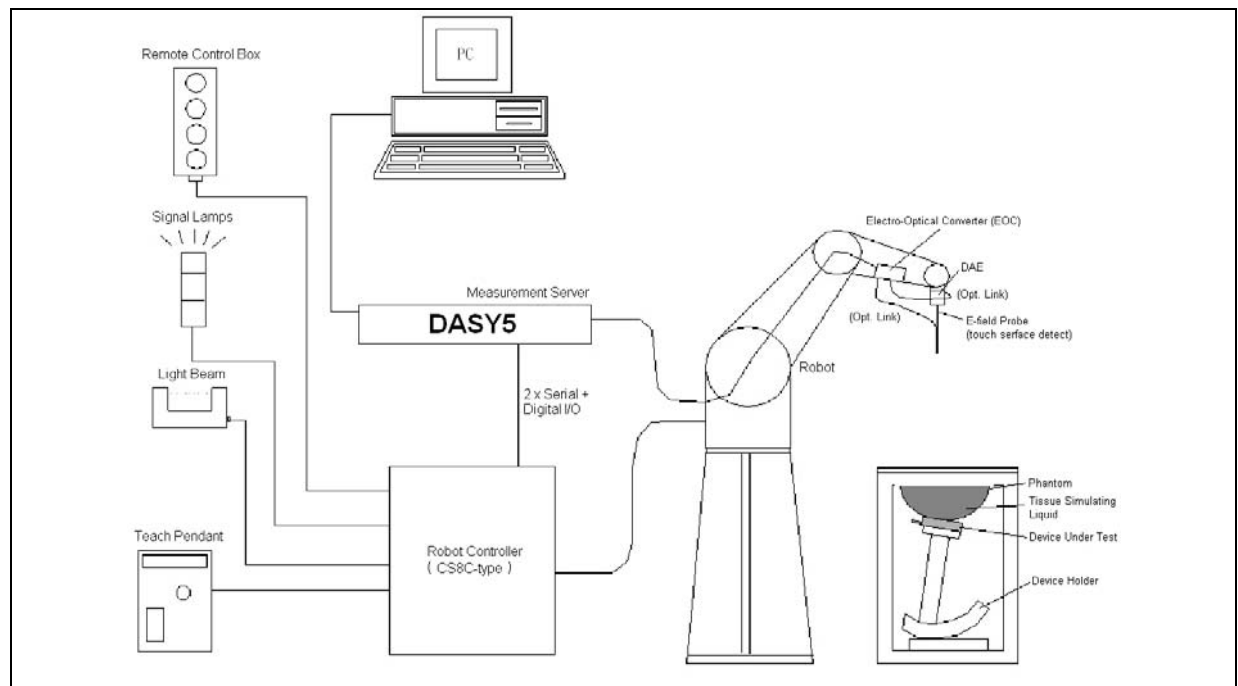


#### **4. SAR Measurement Setup**

These measurements were performed with the automated near-field scanning system DASY5 from Schmid & Partner Engineering AG (SPEAG). The system is based on a high precision robot (working range greater than 0.9m) which positions the probes with a positional repeatability of better than  $\pm 0.02\text{mm}$ . Special E- and H-field probes have been developed for measurements close to material discontinuity, the sensors of which are directly loaded with a Schottky diode and connected via highly resistive lines (length = 300mm) to the data acquisition unit.

A cell controller system contains the power supply, robot controller, teach pendant (Joystick), and remote control, is used to drive the robot motors. The Measurement Server is based on a PC/104 CPU board with a 400MHz intel ULV Celeron, 128MB chipdisk and 128MB RAM. The necessary circuits for communication with either the DAE4 (or DAE3) electronic box as well as the 16-bit AD-converter system for optical detection and digital I/O interface are contained on the DASY5 I/O-board, which is directly connected to the PC/104 bus of the CPU board. The PC consists of the Intel Core(TM)2 CPU @1.86GHz computer with Windows XP system and SAR Measurement Software DASY5, Post Processor SEMCAD, monitor, mouse, and keyboard. The Staubli Robot is connected to the cell controller to allow software manipulation of the robot. A data acquisition electronic (DAE) circuit performs the signal amplification, signal multiplexing, AD-conversion, offset measurements, mechanical surface detection, collision detection...etc. is connected to the Electro-optical converter (EOC). The EOC performs the conversion from the optical into digital electric signal of the DAE and transfers data to the Measurement Server.

The DAE4 (or DAE3) consists of a highly sensitive electrometer-grade preamplifier with auto-zeroing, a channel and gain-switching multiplexer, a fast 16 bit AD-converter and a command decoder and control logic unit. Transmission to the PC-card is accomplished through an optical downlink for data and status information and an optical uplink for commands and clock lines. The mechanical probe mounting device includes two different sensor systems for frontal and sidewise probe contacts. They are also used for mechanical surface detection and probe collision detection. The robot uses its own controller with a built in VME-bus computer. The system is described in detail in [ 3 ] .



**Figure 2. SAR Lab Test Measurement Setup**



## **5. System Components**

### **5.1 DASY5 E-Field Probe System**

The SAR measurements were conducted with the dosimetric probe ES3DV3 or ET3DV6 (manufactured by SPEAG), designed in the classical triangular configuration [ 3 ] and optimized for dosimetric evaluation. The probe is constructed using the thick film technique; with printed resistive lines on ceramic substrates. The probe is equipped with an optical multi-fiber line ending at the front of the probe tip. It is connected to the EOC box on the robot arm and provides an automatic detection of the phantom surface. Half of the fibers are connected to a pulsed infrared transmitter, the other half to a synchronized receiver. As the probe approaches the surface, the reflection from the surface produces a coupling from the transmitting to the receiving fibers. This reflection increases first during the approach, reaches maximum and then decreases. If the probe is flatly touching the surface, the coupling is zero. The distance of the coupling maximum to the surface is independent of the surface reflectivity and largely independent of the surface to probe angle. The DASY5 software reads the reflection during a software approach and looks for the maximum using a 2nd order fitting. The approach is stopped when reaching the maximum.

### 5.1.1 E-Field Probe Specification

<b>Construction</b>	Symmetrical design with triangular core
	Built-in optical fiber for surface detection System
	Built-in shielding against static charges
	PEEK enclosure material (resistant to organic solvents, e.q., glycol)
<b>Calibration</b>	In air from 10 MHz to 6 GHz
	In brain and muscle simulating tissue at frequencies of 835MHz, 1750MHz, 1900MHz and 2450MHz (accuracy $\pm 8\%$ )
	Calibration for other liquids and frequencies upon request
<b>Frequency</b>	10 MHz to > 6 GHz; Linearity: $\pm 0.2$ dB (30 MHz to 3 GHz)
<b>Directivity</b>	$\pm 0.3$ dB in brain tissue (rotation around probe axis)
	$\pm 0.5$ dB in brain tissue (rotation normal probe axis)
<b>Dynamic Range</b>	10 $\mu$ W/g to > 100mW/g; Linearity: $\pm 0.2$ dB
<b>Surface Detection</b>	$\pm 0.2$ mm repeatability in air and clear liquids over diffuse reflecting surface
<b>Dimensions</b>	Overall length: 330mm
	Tip length: 20mm
	Body diameter: 12mm
	Tip diameter: 2.5mm
<b>Application</b>	Distance from probe tip to dipole centers: 1.0mm
	General dosimetry up to 6GHz
	Compliance tests of mobile phones Fast automatic scanning in arbitrary phantoms



Figure 3. E-field Probe

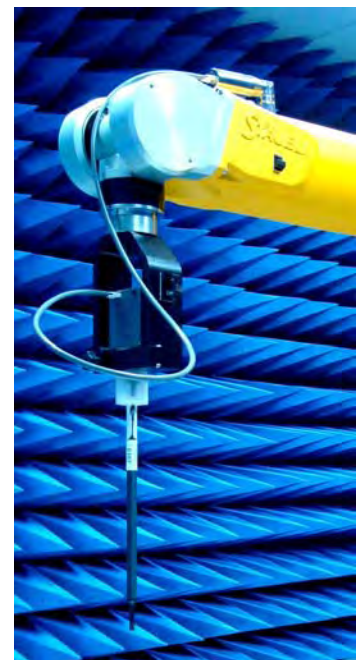


Figure 4.  
Probe setup on robot



### 5.1.2 E-Field Probe Calibration

Each probe is calibrated according to a dosimetric assessment procedure described in [ 4 ] with accuracy better than  $\pm 10\%$ . The spherical isotropy was evaluated with the procedure described in [ 5 ] and found to be better than  $\pm 0.25\text{dB}$ . The sensitivity parameters (NormX, NormY, and NormZ), the diode compression parameter (DCP) and the conversion factor (ConvF) of the probe are tested.

The free space E-field from amplified probe outputs is determined in a test chamber. This is performed in a TEM cell for frequencies below 1GHz, and in a wave guide above 1GHz for free space. For the free space calibration, the probe is placed in the volumetric center of the cavity and at the proper orientation with the field. The probe is then rotated 360 degrees.

E-field temperature correlation calibration is performed in a flat phantom filled with the appropriate simulated brain tissue. The measured free space E-field in the medium correlates to temperature rise in a dielectric medium. For temperature correlation calibration a RF transparent thermistor-based temperature probe is used in conjunction with the E-field probe.

$$\text{SAR} = C \frac{\Delta T}{\Delta t}$$

Where :

$\Delta t$  = Exposure time (30 seconds),

$C$  = Heat capacity of tissue (head or body),

$\Delta T$  = Temperature increase due to RF exposure.

Or

$$\text{SAR} = \frac{|E|^2 \sigma}{\rho}$$

Where :

$\sigma$  = Simulated tissue conductivity,

$\rho$  = Tissue density ( $\text{kg/m}^3$ ).



## 5.2 Data Acquisition Electronic (DAE) System

### Cell Controller

Processor : Intel Core(TM)2 CPU  
Clock Speed : @ 1.86GHz  
Operating System : Windows XP Professional

### Data Converter

Features : Signal Amplifier, multiplexer, A/D converter, and control logic  
Software : DASY5 v5.0 (Build 125) & SEMCAD X Version 13.4 Build 125  
Connecting Lines : Optical downlink for data and status info  
Optical uplink for commands and clock

## 5.3 Robot

Positioner : Stäubli Unimation Corp. Robot Model: TX90XL  
Repeatability :  $\pm 0.02$  mm  
No. of Axis : 6

## 5.4 Measurement Server

Processor : PC/104 with a 400MHz intel ULV Celeron  
I/O-board : Link to DAE4(or DAE3)  
16-bit A/D converter for surface detection system  
Digital I/O interface  
Serial link to robot  
Direct emergency stop output for robot

## 5.5 Device Holder for Transmitters

In combination with the SAM Twin Phantom V4.0, the Mounting Device (POM) enables the rotation of the mounted transmitter in spherical coordinates whereby the rotation points is the ear opening. The devices can be easily, accurately, and repeat ably positioned according to the IEEE SCC34-SC2 and CENELEC specifications. The device holder can be locked at different phantom locations (left head, right head, and flat phantom).

**\*Note :** A simulating human hand is not used due to the complex anatomical and geometrical structure of the hand that may produced infinite number of configurations[ 6 ]. To produce the worst-case condition (the hand absorbs antenna output power), the hand is omitted during the tests.

Larger DUT cannot be tested using this device holder. Instead a support of bigger polystyrene cubes and thin polystyrene plates is used to position the DUT in all relevant positions to find and measure spots with maximum SAR values. Therefore those devices are normally only tested at the flat part of the SAM.

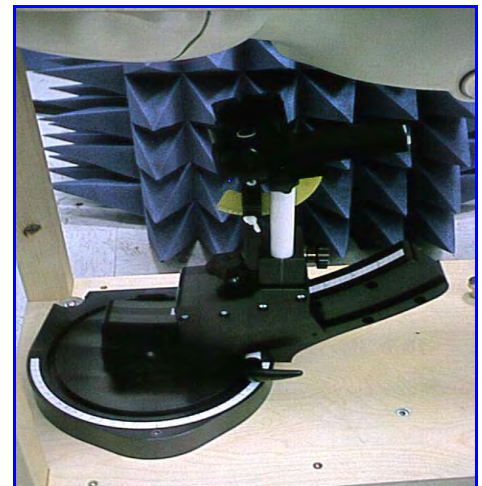


Figure 5. Device Holder

## 5.6 Phantom - SAM v4.0

The shell corresponds to the specifications of the Specific Anthropomorphic Mannequin (SAM) phantom defined in IEEE 1528-2003, CENELEC 50361 and IEC 62209. It enables the dosimetric evaluation of left and right hand phone usage as well as body mounted usage at the flat phantom region. A cover prevents evaporation of the liquid. Reference markings on the phantom allow the complete setup of all predefined phantom positions and measurement grids by manually teaching three points with the robot.

<b>Shell Thickness</b>	2 ±0.2 mm
<b>Filling Volume</b>	Approx. 25 liters
<b>Dimensions</b>	810×1000×500 mm (H×L×W)

Table 1. Specification of SAM v4.0

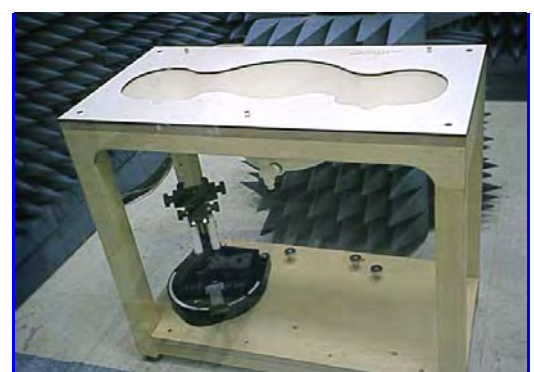


Figure 6. SAM Twin Phantom



## 5.7 Data Storage and Evaluation

### 5.7.1 Data Storage

The DASY5 software stores the assessed data from the data acquisition electronics as raw data (in microvolt readings from the probe sensors), together with all the necessary software parameters for the data evaluation (probe calibration data, liquid parameters and device frequency and modulation data) in measurement files with the extension .DA4. The post processing software evaluates the desired unit and format for output each time the data is visualized or exported. This allows verification of the complete software setup even after the measurement and allows correction of erroneous parameter settings. For example, if a measurement has been performed with an incorrect crest factor parameter in the device setup, the parameter can be corrected afterwards and the data can be reevaluated.

### 5.7.2 Data Evaluation

The DASY5 post processing software (SEMCAD) automatically executes the following procedures to calculate the field units from the microvolt readings at the probe connector. The parameters used in the evaluation are stored in the configuration modules of the software :

<b>Probe parameters :</b>	- Sensitivity	Normi, ai0, ai1, ai2
	- Conversion factor	ConvFi
	- Diode compression point	dcpi
<b>Device parameters :</b>	- Frequency	f
	- Crest factor	cf
<b>Media parameters :</b>	- Conductivity	$\sigma$
	- Density	$\rho$

These parameters must be set correctly in the software. They can be found in the component documents or they can be imported into the software from the configuration files issued for the DASY components. In the direct measuring mode of the multimeter option, the parameters of the actual system setup are used. In the scan visualization and export modes, the parameters stored in the corresponding document files are used.

The first step of the evaluation is a linearization of the filtered input signal to account for the compression characteristics of the detector diode. The compensation depends on the input signal, the diode type and the DC-transmission factor from the diode to the evaluation electronics. If the exciting field is pulsed, the crest factor of the signal must be known to correctly compensate for peak power. The formula for each channel can be given as :

$$V_i = U_i + U_i^2 \cdot \frac{cf}{dcp_i}$$

with  $V_i$  = compensated signal of channel  $i$  ( $i = x, y, z$ )  
 $U_i$  = input signal of channel  $i$  ( $i = x, y, z$ )  
 $cf$  = crest factor of exciting field (DASY parameter)  
 $dcp_i$  = diode compression point (DASY parameter)

From the compensated input signals the primary field data for each channel can be evaluated :

**E-field probes :**

$$E_i = \sqrt{\frac{V_i}{Norm_i \cdot ConvF}}$$

**H-field probes :**

$$H_i = \sqrt{V_i} \cdot \frac{a_{i0} + a_{i1}f + a_{i2}f^2}{f}$$

with  $V_i$  = compensated signal of channel  $i$  ( $i = x, y, z$ )  
 $Norm_i$  = sensor sensitivity of channel  $i$  ( $i = x, y, z$ )  
 $\mu V/(V/m)^2$  for E-field Probes  
 $ConvF$  = sensitivity enhancement in solution  
 $a_{ij}$  = sensor sensitivity factors for H-field probes  
 $f$  = carrier frequency [GHz]  
 $E_i$  = electric field strength of channel  $i$  in V/m  
 $H_i$  = magnetic field strength of channel  $i$  in A/m

The RSS value of the field components gives the total field strength (Hermitian magnitude) :

$$E_{tot} = \sqrt{E_x^2 + E_y^2 + E_z^2}$$



The primary field data are used to calculate the derived field units.

$$SAR = E_{tot}^2 \cdot \frac{\sigma}{\rho \cdot 1000}$$

with  $SAR$  = local specific absorption rate in mW/g  
 $E_{tot}$  = total field strength in V/m  
 $\sigma$  = conductivity in [mho/m] or [Siemens/m]  
 $\rho$  = equivalent tissue density in g/cm<sup>3</sup>

**\* Note :** That the density is set to 1, to account for actual head tissue density rather than the density of the tissue simulating liquid.

The power flow density is calculated assuming the excitation field to be a free space field.

$$P_{pwe} = \frac{E_{tot}^2}{3770} \quad \text{or} \quad P_{pwe} = \frac{H_{tot}^2}{37.7}$$

with  $P_{pwe}$  = equivalent power density of a plane wave in mW/cm<sup>2</sup>  
 $E_{tot}$  = total electric field strength in V/m  
 $H_{tot}$  = total magnetic field strength in A/m



## 6. Test Equipment List

Manufacturer	Name of Equipment	Type/Model	Serial Number	Last Calibration	Remark
SPEAG	Dosimetric E-Field Probe	EX3DV4	3632	01/26/2010	(1)
SPEAG	2450MHz System Validation Kit	D2450V2	712	02/17/2010	(1)
SPEAG	Data Acquisition Electronics	DAE4	779	01/21/2010	(1)
SPEAG	Measurement Server	SE UMS 001 BA	1021	NCR	-----
SPEAG	Device Holder	N/A	N/A	NCR	-----
SPEAG	Phantom	SAM V4.0	1009	NCR	-----
SPEAG	Robot	Staubli RX90L	F00/589B1/A/01	NCR	-----
SPEAG	Software	DASY4 V4.7 Build 80	N/A	NCR	-----
SPEAG	Software	SEMCAD V1.8 Build 186	N/A	NCR	-----
R&S	Wireless Communication Test Set	CMU200	109369	08/10/2010	(1)
Agilent	Wireless Communication Test Set	E5515C	GB47020167	05/25/2010	(1)
Agilent	ENA Series Network Analyzer	E5071B	MY42402996	11/04/2009	(2)
Agilent	Dielectric Probe Kit	85070C	US99360094	NCR	-----
R&S	Power Sensor	NRP-Z22	100179	05/20/2010	(1)
Agilent	Signal Generator	E8257D	MY44320425	03/09/2009	(2)
Agilent	Dual Directional Coupler	778D	50334	NCR	-----
Mini-Circuits	Power Amplifier	ZHL-42W-SMA	D111103#5	NCR	-----
Mini-Circuits	Power Amplifier	ZVE-8G-SMA	D042005 671800514	NCR	-----

Remark: <sup>(1)</sup> Calibration period 1 year. <sup>(2)</sup> Calibration period 2 years.

NOTE: N.C.R. = No Calibration Request.

## 7. Tissue Simulating Liquids

The mixture is calibrated to obtain proper dielectric constant (permittivity) and conductivity of the tissue. The dielectric parameters of the liquids were verified prior to the SAR evaluation using an 85070C Dielectric Probe Kit and an E5071B Network Analyzer.

### IEEE SCC-34/SC-2 in 1528 recommended Tissue Dielectric Parameters

The head tissue dielectric parameters recommended by the IEEE SCC-34/SC-2 in 1528 have been incorporated in the following table. These head parameters are derived from planar layer models simulating the highest expected SAR for the dielectric properties and tissue thickness variations in human head. Other head and body tissue parameters that have not been specified in 1528 are derived from the tissue dielectric parameters computed from the 4-Cole-Cole equation and extrapolated according to the head parameter specified in 1528.

Target Frequency	Head		Body	
(MHz)	$\epsilon_r$	$\sigma$ (S/m)	$\epsilon_r$	$\sigma$ (S/m)
150	52.3	0.76	61.9	0.80
300	45.3	0.87	58.2	0.92
450	43.5	0.87	56.7	0.94
835	41.5	0.90	55.2	0.97
900	41.5	0.97	55.0	1.05
915	41.5	0.98	55.0	1.06
1450	40.5	1.20	54.0	1.30
1610	40.3	1.29	53.8	1.40
1800 - 2000	40.0	1.40	53.3	1.52
2450	39.2	1.80	52.7	1.95
3000	38.5	2.40	52.0	2.73
5800	35.3	5.27	48.2	6.00
( $\epsilon_r$ = relative permittivity, $\sigma$ = conductivity and $\rho$ = 1000 kg/m <sup>3</sup> )				

Table 2. Tissue dielectric parameters for head and body phantoms



## 7.1 Ingredients

The following ingredients are used:

- Water: deionized water (pure H<sub>2</sub>O), resistivity  $\geq 16 \text{ M } \Omega$  -as basis for the liquid
- Sugar: refined white sugar (typically 99.7 % sucrose, available as crystal sugar in food shops) to reduce relative permittivity
- Salt: pure NaCl -to increase conductivity
- Cellulose: Hydroxyethyl-cellulose, medium viscosity (75-125 mPa.s, 2% in water, 20° C), CAS # 54290 -to increase viscosity and to keep sugar in solution.
- Preservative: Preventol D-7 Bayer AG, D-51368 Leverkusen, CAS # 55965-84-9 -to prevent the spread of bacteria and molds
- DGBE: Diethylenglycol-monobuthyl ether (DGBE), Fluka Chemie GmbH, CAS # 112-34-5 -to reduce relative permittivity

## 7.2 Recipes

The following tables give the recipes for tissue simulating liquids to be used in different frequency bands.

Note: The goal dielectric parameters (at 22 °C) must be achieved within a tolerance of  $\pm 5\%$  for  $\epsilon$  and  $\pm 5\%$  for  $\sigma$ .

Liquid type	MSL 2450-B	
Ingredient	Weight (g)	Weight (%)
Water	686.35	68.64
DGBE	313.65	31.37
Salt	-	0.00
Total amount	1,000.00	100.00
Goal dielectric parameters		
Frequency [MHz]	2450	
Relative Permittivity	52.7	
Conductivity [S/m]	1.95	

## 7.3 Liquid Confirmation

### 7.3.1 Parameters

Liquid Verify (Ambient Temperature : $22 \pm 2$ °C ; Relative Humidity : 40 -70%)								
Liquid Type	Frequency	Temp (°C)	Parameters	Target Value	Measured Value	Deviation (%)	Limit (%)	Measured Date
2450MHz Body	2400MHz	22.0	$\epsilon_r$	52.70	51.40	-2.47	$\pm 5$	09/02/2010
			$\sigma$	1.95	1.89	-3.08	$\pm 5$	
	2450MHz	22.0	$\epsilon_r$	52.70	51.29	-2.68	$\pm 5$	
			$\sigma$	1.95	1.96	0.51	$\pm 5$	
	2500MHz	22.0	$\epsilon_r$	52.70	51.13	-2.98	$\pm 5$	
			$\sigma$	1.95	2.02	3.59	$\pm 5$	
2450MHz Body	2400MHz	22.0	$\epsilon_r$	52.70	51.40	-2.47	$\pm 5$	09/03/2010
			$\sigma$	1.95	1.89	-3.08	$\pm 5$	
	2450MHz	22.0	$\epsilon_r$	52.70	51.29	-2.68	$\pm 5$	
			$\sigma$	1.95	1.96	0.51	$\pm 5$	
	2500MHz	22.0	$\epsilon_r$	52.70	51.13	-2.98	$\pm 5$	
			$\sigma$	1.95	2.02	3.59	$\pm 5$	

Table 3. Measured Tissue dielectric parameters for head and body phantoms - 1

### 7.3.2 Liquid Depth

The liquid level was during measurement  $15\text{cm} \pm 0.5\text{cm}$ .

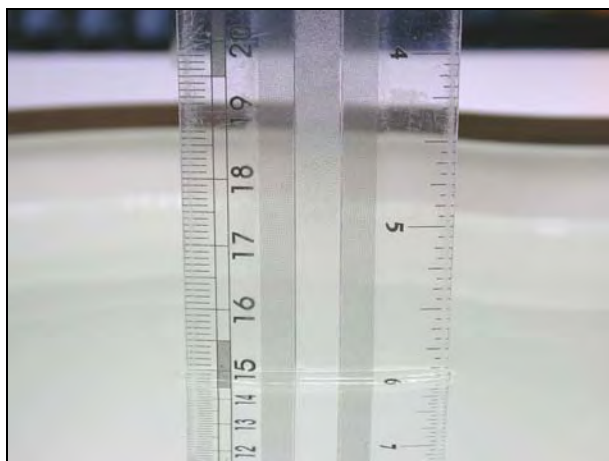


Figure 7. Head-Tissue-Simulating-Liquid



Figure 8. Body-Tissue-Simulating-Liquid



## 8. Measurement Process

### 8.1 Device and Test Conditions

The Test Device was provided by **Atheros Communications Inc.** for this evaluation. The spatial peak SAR values were assessed for the lowest, middle and highest channels defined by **WLAN 802.11b / 802.11g / 802.11n\_HT20** (#1=2412MHz, #6=2437MHz, #11=2462MHz) systems and **WLAN 802.11n\_HT40** (#1=2422MHz, #6=2437MHz, #11=2452MHz) systems.

Usage:	Operates with a test mode by client (802.11b/802.11g//802.11n)
Simulating human Head/Body:	Body
Device Test Position:	<p>The device was tested in four different positions. They are bottom of tablet PC, Secondary Landscape, and Primary / Secondary Portrait. In these positions, the surface of DUT is touching with phantom 0cm gap.</p> <p>The test position of Primary Landscape was not performed because the distance between WWAN and WLAN antennas were larger than 5cm. We expect that the SAR Value for this position will very low.</p>
EUT Battery:	Fully-charged with Li-ion batteries.
Comment:	The SAR test mode is chosen by the max conducted power.

## 8.2 Test Mode Description

- (1) The maximum output power of 802.11b is 1/4dB bigger than 802.11g. Therefore the 802.11g is not required.
- (2) The 1g- SAR value are smaller than 0.8 mw/g of 802.11n HT20/40 of middle channel. The Lowest and Highest are not required of channels.
- (3) WWAN and WLAN weren't simultaneous Transmission. Therefore, it is not simultaneously issue.
- (4) The Atheros Communications Inc. \_AR5B195 is a PCI express form factor (half-mini) card that is designed to provide a 1x1 802.11b/g/n interface for host systems such as laptop PC' s.
- (5) Choose the maximum Avg. Power to test SAR in each band:

Band	Data Rate	CH	Frequency (MHz)	Time-Average Conducted Power (dBm)	Peak Conducted Power (dBm)	Worst Case
802.11 b	1M	1	2412.0	17.54	20.44	<input type="checkbox"/>
		6	2437.0	<b>17.70</b>	20.56	<input checked="" type="checkbox"/>
		11	2462.0	17.30	20.52	<input type="checkbox"/>
802.11 g	6M	1	2412.0	14.07	23.87	<input type="checkbox"/>
		6	2437.0	<b>17.00</b>	26.66	<input checked="" type="checkbox"/>
		11	2462.0	13.62	23.60	<input type="checkbox"/>
802.11n HT20	6.5M	1	2412.0	12.96	23.29	<input type="checkbox"/>
		6	2437.0	<b>16.90</b>	26.26	<input checked="" type="checkbox"/>
		11	2462.0	12.45	22.42	<input type="checkbox"/>
802.11n HT40	13.5M	3	2422.0	13.13	23.42	<input type="checkbox"/>
		6	2437.0	<b>15.27</b>	25.79	<input checked="" type="checkbox"/>
		9	2452.0	13.14	23.73	<input type="checkbox"/>

## 8.3 Simultaneous Transmitting Evaluate

RF Conducted Power		
Band	dBm	W
WCDMA/HSDPA/HPUPA Band V	23.11	0.20
WCDMA/HSDPA/HPUPA Band II	21.76	0.15
Wi-Fi 802.11b	17.70	0.06
Wi-Fi 802.11g	17.00	0.05
Wi-Fi 802.11n_HT20	16.90	0.05
Wi-Fi 802.11n_HT40	15.27	0.03
BT	2.15	0.002

Antenna Distance	
Antenna Account	Distance (cm)
BT to WLAN	3.2
BT to WANM(License)	9.6
WLAN to WWAN(License)	14.4

※ All system can't use at the same time.

## 8.4 System Performance Check

### 8.4.1 Symmetric Dipoles for System Validation

<b>Construction</b>	Symmetrical dipole with 1/4 balun enables measurement of feed point impedance with NWA matched for use near flat phantoms filled with head simulating solutions Includes distance holder and tripod adaptor Calibration Calibrated SAR value for specified position and input power at the flat phantom in head simulating solutions.
<b>Frequency</b>	835, 1900, 2450 MHz
<b>Return Loss</b>	> 20 dB at specified validation position
<b>Power Capability</b>	> 100 W ( $f < 1\text{GHz}$ ); > 40 W ( $f > 1\text{GHz}$ )
<b>Options</b>	Dipoles for other frequencies or solutions and other calibration conditions are available upon request
<b>Dimensions</b>	D2450V2 : dipole length 51.5 mm; overall height 300 mm



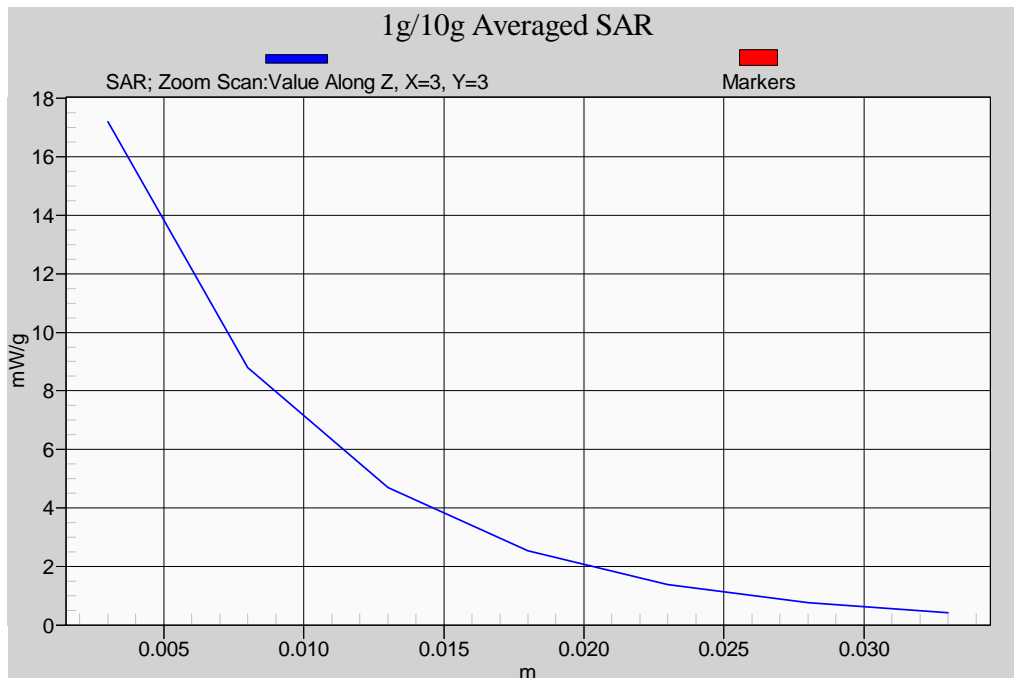
Figure 9. Validation Kit

### 8.4.2 Validation

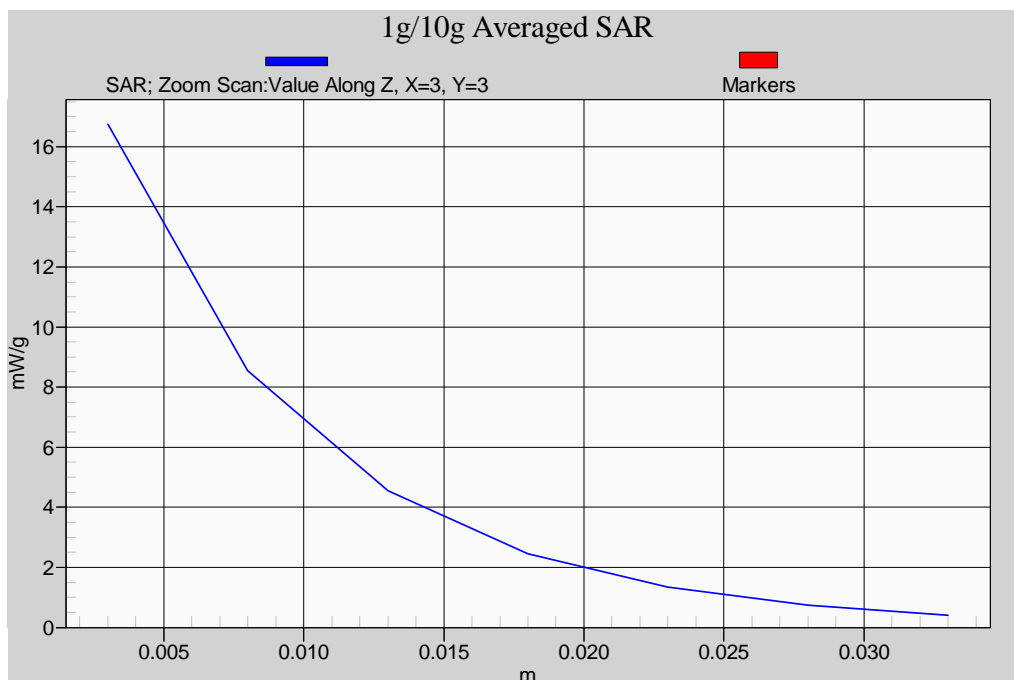
Prior to the assessment, the system validation kit was used to test whether the system was operating within its specifications of  $\pm 7\%$ . The validation was performed at 2450 MHz.

Validation kit		Mixture Type	SAR <sub>1g</sub> [mW/g]		SAR <sub>10g</sub> [mW/g]		Date of Calibration
D2450V2-SN712		Body	52		23.88		02/17/2010
Frequency (MHz)	Power (dBm)	SAR <sub>1g</sub> (mW/g)	SAR <sub>10g</sub> (mW/g)	Drift (dB)	Difference percentage		Date
					1g	10g	
2450 (Body)	250mW	13	6.08	-0.170	0.0 %	1.8 %	Sep. 02, 2010
	Normalize to 1 Watt	52	24.32				
	250mW	12.7	5.96	-0.114	-2.3 %	-0.2 %	Sep. 03, 2010
	Normalize to 1 Watt	50.8	23.84				

### Z-axis Plot of System Performance Check



Body-Tissue-Simulating-Liquid 2450MHz \_ 2010.09.02



Body-Tissue-Simulating-Liquid 2450MHz \_ 2010.09.03



## 8.5 Dosimetric Assessment Setup

### 8.5.1 Body Test Position

#### Body - Worn Configuration

Body - Worn operating configurations should be tested with the belt-clips and holsters attached to the device and positioned against a flat phantom in normal use configurations. Devices with a headset output should be tested with a headset connected to the device.

Body - Worn accessories may not always be supplied or available as options for some devices that are intended to be authorized for body-worn use. A separation distance of 15 mm between the back of the device and a flat phantom is recommended for testing body-worn SAR compliance under such circumstances.

For this test :

- ☐ The EUT is placed into the holster/belt clip and the holster is positioned against the surface of the phantom in a normal operating position.
- ☒ Since this EUT doesn't supply any body-worn accessory to the end user, for **WLAN 802.11b / WLAN 802.11g / WLAN 802.11n** the distance of **2mm** was tested to confirm the necessary "minimum SAR separation distance".  
(\* Note : This distance includes the 2 mm phantom shell thickness.)



### 8.5.2 Measurement Procedures

The evaluation was performed with the following procedures :

- Surface Check : A surface checks job gathers data used with optical surface detection. It determines the distance from the phantom surface where the reflection from the optical detector has its peak. Any following measurement jobs using optical surface detection will then rely on this value. The surface check performs its search a specified number of times, so that the repeatability can be verified. The probe tip distance is 1.3mm to phantom inner surface during scans.
- Reference : The reference job measures the field at a specified reference position, at 4 mm from the selected section's grid reference point.
- Area Scan : The area scan is used as a fast scan in two dimensions to find the area of high field values, before doing a finer measurement around the hot spot. The sophisticated interpolation routines can find the maximum locations even in relatively coarse grids. When an area scan has measured all reachable points, it computes the field maxima found in the scanned area, within a range of the global maximum. Any following zoom scan within the same procedure will then perform fine scans around these maxima. The area covered the entire dimension of the EUT and the horizontal grid spacing was 15 mm x 15 mm.
- Zoom Scan : Zoom scans are used to assess the highest averaged SAR for cubic averaging volumes with 1 g and 10 g of simulated tissue. The zoom scan measures 7 x 7 x 9 points in a 30 x 30 x 24 mm cube whose base faces are centered around the maxima returned from a preceding area scan within the same procedure.
- Drift : The drift job measures the field at the same location as the most recent reference job within the same procedure, with the same settings. The drift measurement gives the field difference in dB from the last reference measurement. Several drift measurements are possible for each reference measurement. This allows monitoring of the power drift of the device in the batch process. If the value changed by more than 5%, the evaluation was repeated.



## 8.6 Spatial Peak SAR Evaluation

The DASY5 software includes all numerical procedures necessary to evaluate the spatial peak SAR values. Based on the Draft: SCC-34, SC-2, WG-2 - Computational Dosimetry, IEEE P1529/D0.0 (Draft Recommended Practice for Determining the Spatial-Peak Specific Absorption Rate (SAR) Associated with the Use of Wireless Handsets - Computational Techniques), a new algorithm has been implemented. The spatial-peak SAR can be computed over any required mass.

The base for the evaluation is a "cube" measurement in a volume of  $(32 \times 32 \times 30) \text{ mm}^3$  ( $5 \times 5 \times 7$  points). The measured volume must include the 1g and 10g cubes with the highest averaged SAR values. For that purpose, the center of the measured volume is aligned to the interpolated peak SAR value of a previously performed area scan. If the 10g cube or both cubes are not entirely inside the measured volumes, the system issues a warning regarding the evaluated spatial peak values within the Postprocessing engine (SEMCAD). This means that if the measured volume is shifted, higher values might be possible. To get the correct values you can use a finer measurement grid for the area scan. In complicated field distributions, a large grid spacing for the area scan might miss some details and give an incorrectly interpolated peak location.

The entire evaluation of the spatial peak values is performed within the Postprocessing engine (SEMCAD). The system always gives the maximum values for the 1g and 10g cubes. The algorithm to find the cube with highest averaged SAR is divided into three stages:

### Interpolation and Extrapolation

The probe is calibrated at the center of the dipole sensors which is located 1 to 2.7mm away from the probe tip. During measurements, the probe stops shortly above the phantom surface, depending on the probe and the surface detecting system. Both distances are included as parameters in the probe configuration file. The software always knows exactly how far away the measured point is from the surface. As the probe cannot directly measure at the surface, the values between the deepest measured point and the surface must be extrapolated.

In DASY5, the choice of the coordinate system defining the location of the measurement points has no influence on the uncertainty of the interpolation, Maxima Search and SAR extrapolation routines. The interpolation, Maxima Search and extrapolation routines are all based on the modified Quadratic Shepard's method [7].



## **9. Measurement Uncertainty**

Measurement uncertainties in SAR measurements are difficult to quantify due to several variables including biological, physiological, and environmental. However, we estimate the measurement uncertainties in SAR to be less than  $\pm 21.4\%$  [ 8 ] .

According to Std. C95.3 [ 9 ], the overall uncertainties are difficult to assess and will vary with the type of meter and usage situation. However, accuracy's of  $\pm 1$  to 3 dB can be expected in practice, with greater uncertainties in near-field situations and at higher frequencies (shorter wavelengths), or areas where large reflecting objects are present. Under optimum measurement conditions, SAR measurement uncertainties of at least  $\pm 2$  dB can be expected.

According to CENELEC [ 10 ] , typical worst-case uncertainty of field measurements is  $\pm 5$  dB. For well-defined modulation characteristics the uncertainty can be reduced to  $\pm 3$  dB.

Error Description	Uncertainty value	Prob. Dist.	Div.	(c) 1g	(c) 10g	Std. Unc. (1g)	Std. Unc. (10g)	(v) $v_{eff}$
<b>Measurement System</b>								
Probe Calibration	$\pm 5.5 \%$	N	1	1	1	$\pm 5.5 \%$	$\pm 5.5 \%$	
Axial Isotropy	$\pm 4.7 \%$	R		0.7	0.7	$\pm 1.9 \%$	$\pm 1.9 \%$	$\infty$
Hemispherical Isotropy	$\pm 9.6 \%$	R	$\sqrt{3}$	0.7	0.7	$\pm 3.9 \%$	$\pm 3.9 \%$	$\infty$
Boundary Effects	$\pm 1.0 \%$	R	$\sqrt{3}$	1	1	$\pm 0.6 \%$	$\pm 0.6 \%$	$\infty$
Linearity	$\pm 4.7 \%$	R	$\sqrt{3}$	1	1	$\pm 2.7 \%$	$\pm 2.7 \%$	$\infty$
System Detection Limits	$\pm 1.0 \%$	R	$\sqrt{3}$	1	1	$\pm 0.6 \%$	$\pm 0.6 \%$	$\infty$
Readout Electronics	$\pm 0.3 \%$	N	1	1	1	$\pm 0.3 \%$	$\pm 0.3 \%$	$\infty$
Response Time	$\pm 0.8 \%$	R	$\sqrt{3}$	1	1	$\pm 0.5 \%$	$\pm 0.5 \%$	$\infty$
Integration Time	$\pm 2.6 \%$	R	$\sqrt{3}$	1	1	$\pm 1.5 \%$	$\pm 1.5 \%$	$\infty$
RF Ambient Noise	$\pm 3.0 \%$	R	$\sqrt{3}$	1	1	$\pm 1.7 \%$	$\pm 1.7 \%$	$\infty$
RF Ambient Reflections	$\pm 3.0 \%$	R	$\sqrt{3}$	1	1	$\pm 1.7 \%$	$\pm 1.7 \%$	$\infty$
Probe Positioner	$\pm 0.4 \%$	R	$\sqrt{3}$	1	1	$\pm 0.2 \%$	$\pm 0.2 \%$	$\infty$
Probe Positioning	$\pm 2.9 \%$	R	$\sqrt{3}$	1	1	$\pm 1.7 \%$	$\pm 1.7 \%$	$\infty$
Max. SAR Eval.	$\pm 1.0 \%$	R	$\sqrt{3}$	1	1	$\pm 0.6 \%$	$\pm 0.6 \%$	$\infty$
<b>Test Sample Related</b>								
Device Positioning	$\pm 2.9 \%$	N	1	1	1	$\pm 2.9 \%$	$\pm 2.9 \%$	145
Device Holder	$\pm 3.6 \%$	N	1	1	1	$\pm 3.6 \%$	$\pm 3.6 \%$	5
Power Drift	$\pm 5.0 \%$	R	$\sqrt{3}$	1	1	$\pm 2.9 \%$	$\pm 2.9 \%$	$\infty$
<b>Phantom and Setup</b>								
Phantom Uncertainty	$\pm 4.0 \%$	R	$\sqrt{3}$	1	1	$\pm 2.3 \%$	2.3 %	$\infty$
Liquid Conductivity (target)	$\pm 5.0 \%$	R	$\sqrt{3}$	0.64	0.43	$\pm 1.8 \%$	1.2 %	$\infty$
Liquid Conductivity (meas.)	$\pm 2.5 \%$	N	1	0.64	0.43	$\pm 1.6 \%$	1.1 %	$\infty$
Liquid Permittivity (target)	$\pm 5.0 \%$	R	$\sqrt{3}$	0.6	0.49	$\pm 1.7 \%$	1.4 %	$\infty$
Liquid Permittivity (meas.)	$\pm 2.5 \%$	N	1	0.6	0.49	$\pm 1.5 \%$	1.2 %	$\infty$
<b>Combined Std. Uncertainty</b>						$\pm 10.7 \%$	$\pm 10.5 \%$	387
<b>Expanded STD Uncertainty</b>						$\pm 21.4 \%$	$\pm 21.0 \%$	

**Table 4. Uncertainty Budget of DASY**



## 10. SAR Test Results Summary

Detail results see Appendix B.

### 10.1 WLAN 802.11b Body SAR

Ambient :

Temperature (°C) : 22 ± 2

Relative HUMIDITY (%) : 40-70

Liquid :

Mixture Type : MSL2450

Liquid Temperature (°C) : 22.0

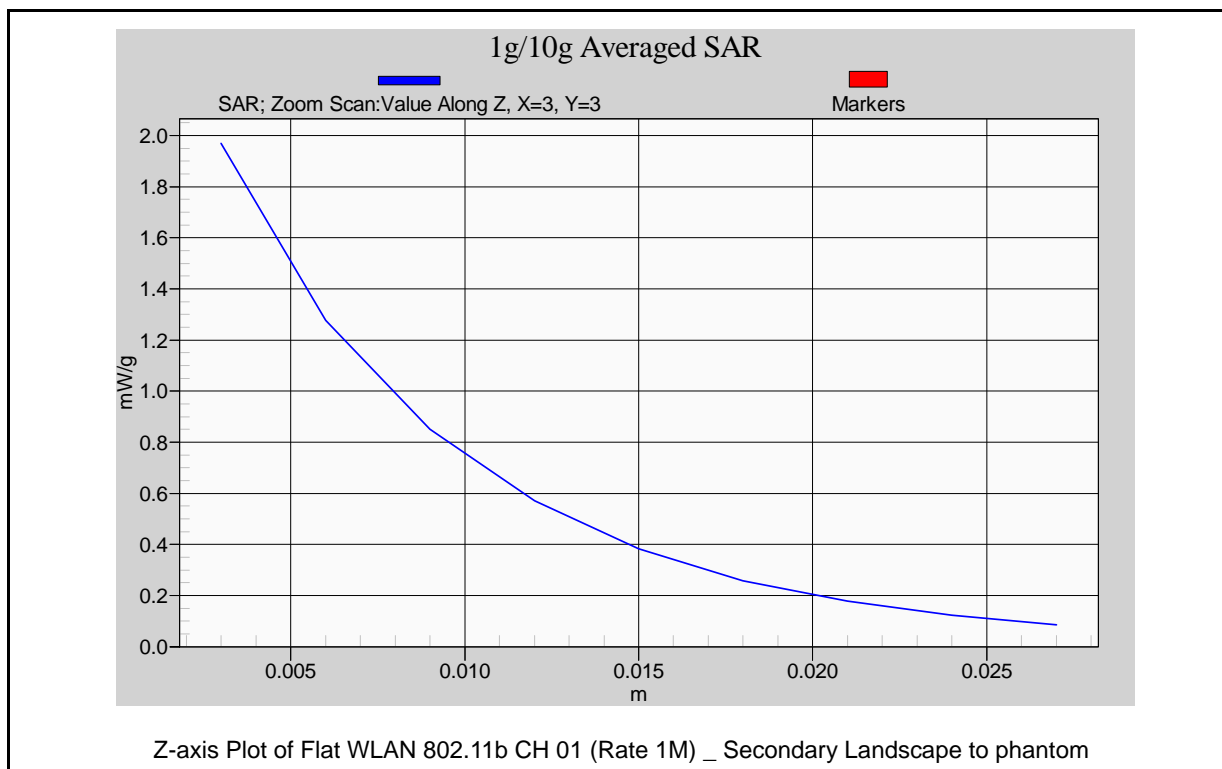
Depth of liquid (cm) : 15

Measurement :

Duty Cycle : 1:1

Probe S/N : 3632

Frequency		Rate	Power (dBm)	Phantom Position	Antenna Position	Accessory	SAR <sub>1g</sub> [mW/g]	Power Drift (dB)	Remark
MHz	CH								
2437	06	1M	17.70	Flat	PIFA	N/A	0.733	0.185	Bottom
2412	01	1M	17.54	Flat	PIFA	N/A	<b>1.430</b>	0.018	Secondary Landscape
2437	06	1M	17.70	Flat	PIFA	N/A	1.230	-0.048	Secondary Landscape
2462	11	1M	17.30	Flat	PIFA	N/A	1.020	0.009	Secondary Landscape
2437	06	1M	17.70	Flat	PIFA	N/A	0.422	0.170	Primary Portrait
Std. C95.1-2005 - Safety Limit RSS-102-2009 - Safety Limit Spatial Peak Uncontrolled Exposure/General Population						1.6 W/kg (mW/g) Averaged over 1 gram			



## 10.2 WLAN 802.11n (2.4G)\_HT20 Body SAR

Ambient :

Temperature (°C) : 22 ± 2

Relative HUMIDITY (%) : 40-70

Liquid :

Mixture Type : MSL2450

Liquid Temperature (°C) : 22.0

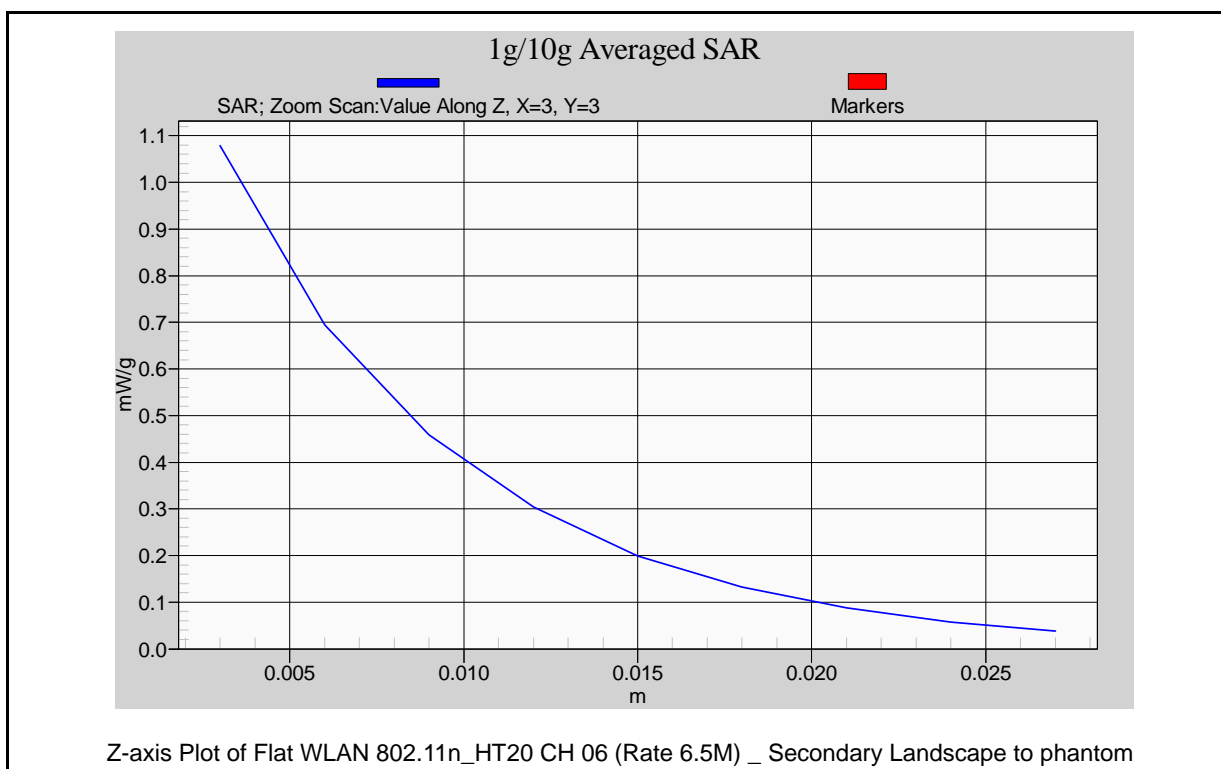
Depth of liquid (cm) : 15

Measurement :

Duty Cycle : 1:1

Probe S/N : 3632

Frequency		Rate	Power (dBm)	Phantom Position	Antenna Position	Accessory	SAR <sub>1g</sub> [mW/g]	Power Drift (dB)	Remark
MHz	CH								
2437	06	6.5M	16.90	Flat	PIFA	N/A	0.664	0.063	Bottom
2437	06	6.5M	16.90	Flat	PIFA	N/A	<b>0.787</b>	0.135	Secondary Landscape
2437	06	6.5M	16.90	Flat	PIFA	N/A	0.362	-0.093	Primary Portrait
Std. C95.1-2005 - Safety Limit RSS-102-2009 - Safety Limit Spatial Peak Uncontrolled Exposure/General Population						1.6 W/kg (mW/g) Averaged over 1 gram			





### 10.3 WLAN 802.11n (2.4G)\_HT40 Body SAR

Ambient :

Temperature (°C) : 22 ± 2

Relative HUMIDITY (%) : 40-70

Liquid :

Mixture Type : MSL2450

Liquid Temperature (°C) : 22.0

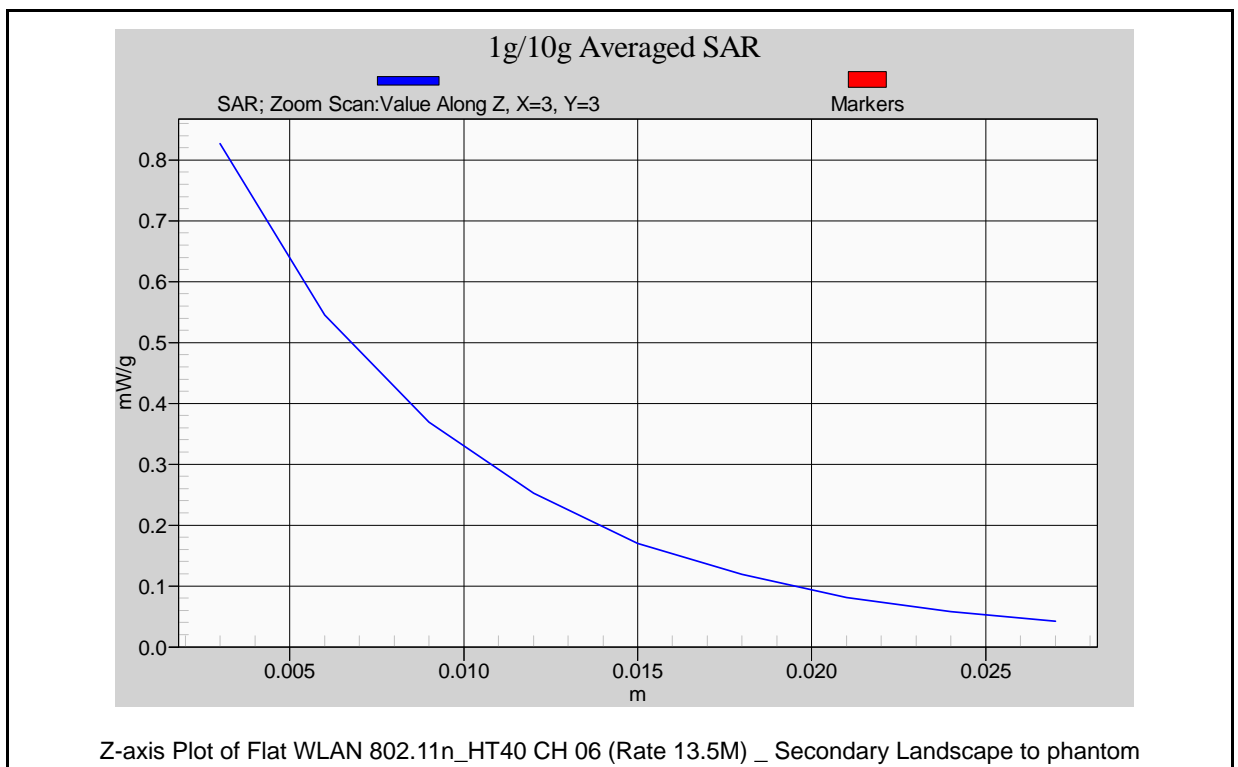
Depth of liquid (cm) : 15

Measurement :

Duty Cycle : 1:1

Probe S/N : 3632

Frequency		Rate	Power (dBm)	Phantom Position	Antenna Position	Accessory	SAR <sub>1g</sub> [mW/g]	Power Drift (dB)	Remark
MHz	CH								
2437	06	13.5M	15.27	Flat	PIFA	N/A	0.514	0.079	Bottom
2437	06	13.5M	15.27	Flat	PIFA	N/A	<b>0.612</b>	0.134	Secondary Landscape
2437	06	13.5M	15.27	Flat	PIFA	N/A	0.164	0.006	Primary Portrait
Std. C95.1-2005 - Safety Limit RSS-102-2009 - Safety Limit Spatial Peak Uncontrolled Exposure/General Population						1.6 W/kg (mW/g) Averaged over 1 gram			





#### 10.4 Std. C95.1-2005 RF Exposure Limit

Human Exposure	Population Uncontrolled	Occupational Controlled
	Exposure	Exposure
	( W/kg ) or (mW/g)	( W/kg ) or (mW/g)
Spatial Peak SAR*	1.60	8.00
(head)		
Spatial Peak SAR**	0.08	0.40
(Whole Body)		
Spatial Peak SAR***	1.60	8.00
(Partial-Body)		
Spatial Peak SAR****	4.00	20.00
(Hands / Feet / Ankle / Wrist )		
Table 5. Safety Limits for Partial Body Exposure		

**Notes :**

- \* The Spatial Peak value of the SAR averaged over any 1 gram of tissue.  
( defined as a tissue volume in the shape of a cube ) and over the appropriate averaging time.
- \*\* The Spatial Average value of the SAR averaged over the whole – body.
- \*\*\* The Spatial Average value of the SAR averaged over the partial – body.
- \*\*\*\* The Spatial Peak value of the SAR averaged over any 10 grams of tissue.  
( defined as a tissue volume in the shape of a cube ) and over the appropriate averaging time.

**Population / Uncontrolled Environments** : are defined as locations where there is the exposure of individuals who have no knowledge or control of their exposure.

**Occupational / Controlled Environments** : are defined as locations where there is exposure that may be incurred by persons who are aware of the potential for exposure, (i.e. as a result of employment or occupation).

## 11. Conclusion

The SAR test values found for the portable mobile phone **Atheros Communications Inc. Trade Name : ATHEROS Model(s) : AR5B195** is below the maximum recommended level of 1.6 W/kg (mW/g).

## 12. References

- [1] Std. C95.1-2005, "*American National Standard safety levels with respect to human exposure to radio frequency electromagnetic fields, 300KHz to 100GHz*", New York.
- [2] NCRP, National Council on Radiation Protection and Measurements, "*Biological Effects and Exposure Criteria for Radio frequency Electromagnetic Fields*", NCRP report NO. 86, 1986.
- [3] T. Schmid, O. Egger, and N. Kuster, "*Automatic E-field scanning system for dosimetric assessments*", IEEE Transactions on Microwave Theory and Techniques, vol. 44, pp, 105-113, Jan. 1996.
- [4] K. Poković, T. Schmid, and N. Kuster, "*Robust setup for precise calibration of E-field probes in tissue simulating liquids at mobile communications frequency*", in ICECOM'97, Dubrovnik, October 15-17, 1997, pp.120-124.
- [5] K. Poković, T. Schmid, and N. Kuster, "*E-field probe with improved isotropy in brain simulating liquids*", in Proceedings of the ELMAR, Zadar, Croatia, 23-25 June, 1996, pp.172-175.
- [6] N. Kuster, and Q. Balzano, "*Energy absorption mechanism by biological bodies in the near field of dipole antennas above 300MHz*", IEEE Transaction on Vehicular Technology, vol. 41, no. 1, Feb. 1992, pp. 17-23.
- [7] Robert J. Renka, "*Multivariate Interpolation Of Large Sets Of Scattered Data*", University of North Texas ACM Transactions on Mathematical Software, vol. 14, no. 2, June 1988 , pp. 139-148.
- [8] N. Kuster, R. Kastle, T. Schmid, "*Dosimetric evaluation of mobile communications equipment with known precision*", IEEE Transaction on Communications, vol. E80-B, no. 5, May 1997, pp. 645-652.
- [9] Std. C95.3-1991, "*IEEE Recommended Practice for the Measurement of Potentially Hazardous Electromagnetic Fields – RF and Microwave*", New York: IEEE, Aug. 1992.
- [10] CENELEC CLC/SC111B, European Prestandard (prENV 50166-2), "*Human Exposure to Electromagnetic Fields High-frequency: 10KHz-300GHz*", Jan. 1995.
- [11] RSS-102, Issue 3 (June 2009), Radio Standards Specification 102.



## Appendix A - System Performance Check

Test Laboratory: A Test Lab Techno Corp.

Date/Time: 9/2/2010 9:17:00 AM

### System Performance Check at 2450MHz\_2010902\_Body

**DUT: Dipole 2450 MHz; Type: D2450V2; Serial: D2450V2 - SN:712**

Communication System: CW; Frequency: 2450 MHz; Duty Cycle: 1:1

Medium parameters used:  $f = 2450$  MHz;  $\sigma = 1.96$  mho/m;  $\epsilon_r = 51.3$ ;  $\rho = 1000$  kg/m<sup>3</sup>

Phantom section: Flat Section

Measurement Standard: DASY5 (IEEE/IEC)

DASY5 Configuration:

- Probe: EX3DV4 - SN3632; ConvF(7.4, 7.4, 7.4); Calibrated: 1/26/2010
- Sensor-Surface: 3mm (Mechanical Surface Detection)
- Electronics: DAE4 Sn779; Calibrated: 1/21/2010
- Phantom: ELI 4.0; Type: QDOVA001BB; Serial: 1036
- Measurement SW: DASY5, V5.0 Build 125; SEMCAD X Version 13.4 Build 125

### System Performance Check at 2450MHz/Area Scan (61x61x1):

Measurement grid:  $dx=15$ mm,  $dy=15$ mm

Maximum value of SAR (interpolated) = 18 mW/g

### System Performance Check at 2450MHz/Zoom Scan (7x7x7)/Cube 0:

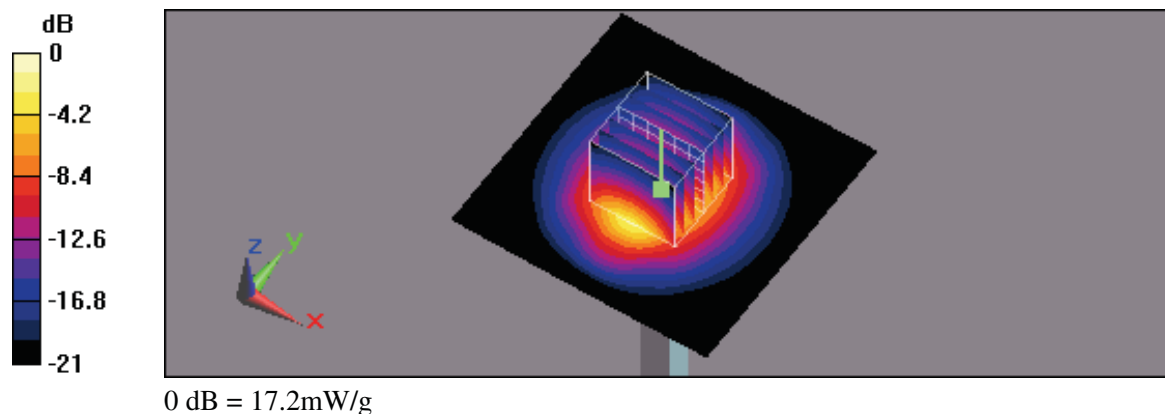
Measurement grid:  $dx=5$ mm,  $dy=5$ mm,  $dz=5$ mm

Reference Value = 96.4 V/m; Power Drift = -0.170 dB

Peak SAR (extrapolated) = 26.4 W/kg

**SAR(1 g) = 13 mW/g; SAR(10 g) = 6.08 mW/g**

Maximum value of SAR (measured) = 17.2 mW/g





Test Laboratory: A Test Lab Techno Corp.

Date/Time: 9/3/2010 1:24:54 PM

### System Performance Check at 2450MHz\_2010903\_Body

**DUT: Dipole 2450 MHz; Type: D2450V2; Serial: D2450V2 - SN:712**

Communication System: CW; Frequency: 2450 MHz; Duty Cycle: 1:1

Medium parameters used:  $f = 2450$  MHz;  $\sigma = 1.96$  mho/m;  $\epsilon_r = 51.3$ ;  $\rho = 1000$  kg/m<sup>3</sup>

Phantom section: Flat Section

Measurement Standard: DASYS (IEEE/IEC)

DASY5 Configuration:

- Probe: EX3DV4 - SN3632; ConvF(7.4, 7.4, 7.4); Calibrated: 1/26/2010
- Sensor-Surface: 3mm (Mechanical Surface Detection)
- Electronics: DAE4 Sn779; Calibrated: 1/21/2010
- Phantom: ELI 4.0; Type: QDOVA001BB; Serial: 1036
- Measurement SW: DASYS, V5.0 Build 125; SEMCAD X Version 13.4 Build 125

### System Performance Check at 2450MHz/Area Scan (61x61x1):

Measurement grid:  $dx=15$ mm,  $dy=15$ mm

Maximum value of SAR (interpolated) = 16.5 mW/g

### System Performance Check at 2450MHz/Zoom Scan (7x7x7)/Cube 0:

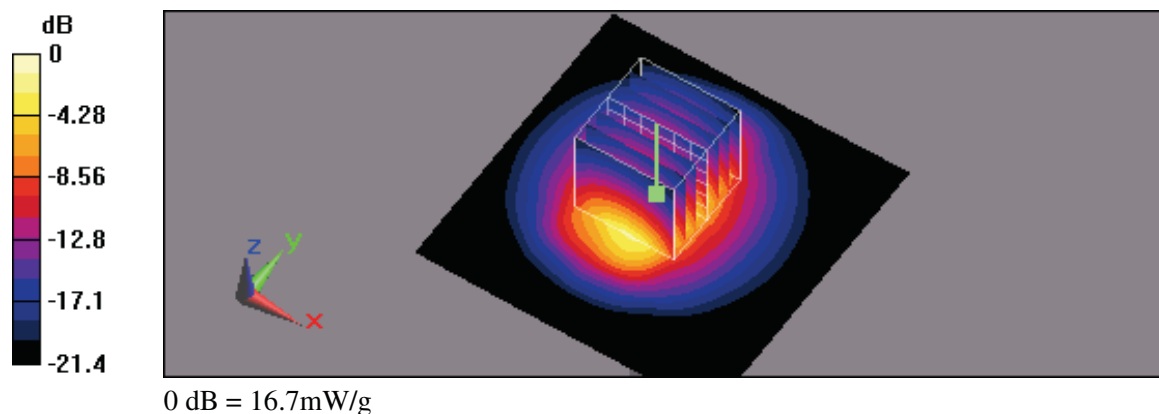
Measurement grid:  $dx=5$ mm,  $dy=5$ mm,  $dz=5$ mm

Reference Value = 92.9 V/m; Power Drift = -0.114 dB

Peak SAR (extrapolated) = 25.8 W/kg

**SAR(1 g) = 12.7 mW/g; SAR(10 g) = 5.96 mW/g**

Maximum value of SAR (measured) = 16.7 mW/g





## Appendix B - SAR Measurement Data

Test Laboratory: A Test Lab Techno Corp.

Date/Time: 9/2/2010 3:04:01 PM

### Flat\_802.11b CH6\_1M\_Host Bottom Close Body

**DUT: AR5B195; Type: 802.11n-BT COMBO CARD; FCC ID: PPD-AR5B195**

Communication System: IEEE 802.11b; Frequency: 2437 MHz; Duty Cycle: 1:1

Medium parameters used:  $f = 2437$  MHz;  $\sigma = 1.94$  mho/m;  $\epsilon_r = 51.3$ ;  $\rho = 1000$  kg/m<sup>3</sup>

Phantom section: Flat Section

Measurement Standard: DASYS (IEEE/IEC)

DASY5 Configuration:

- Probe: EX3DV4 - SN3632; ConvF(7.4, 7.4, 7.4); Calibrated: 1/26/2010
- Sensor-Surface: 3mm (Mechanical Surface Detection)
- Electronics: DAE4 Sn779; Calibrated: 1/21/2010
- Phantom: ELI 4.0; Type: QDOVA001BB; Serial: 1036
- Measurement SW: DASYS, V5.0 Build 125; SEMCAD X Version 13.4 Build 125

### Flat/Area Scan (81x111x1):

Measurement grid:  $dx=15$ mm,  $dy=15$ mm

Maximum value of SAR (interpolated) = 0.888 mW/g

### Flat/Zoom Scan (7x7x9)/Cube 0:

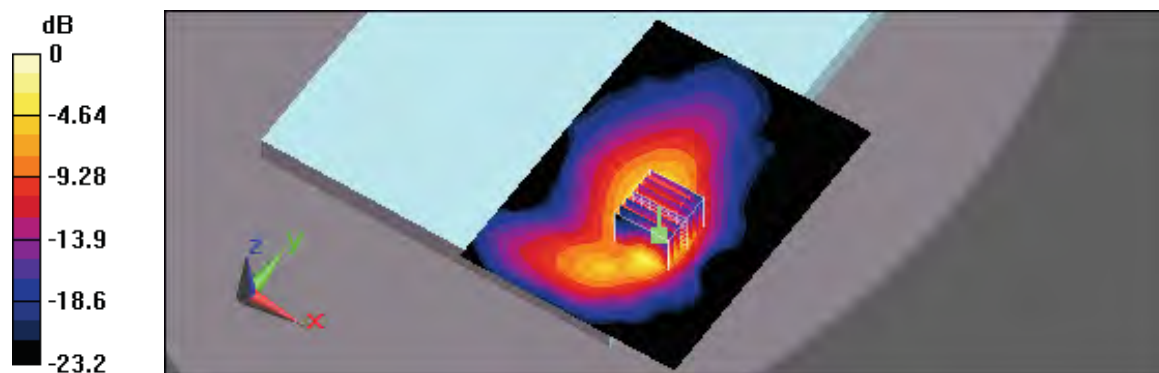
Measurement grid:  $dx=5$ mm,  $dy=5$ mm,  $dz=3$ mm

Reference Value = 0.513 V/m; Power Drift = 0.185 dB

Peak SAR (extrapolated) = 1.63 W/kg

**SAR(1 g) = 0.733 mW/g; SAR(10 g) = 0.334 mW/g**

Maximum value of SAR (measured) = 0.951 mW/g



0 dB = 0.951mW/g

Test Laboratory: A Test Lab Techno Corp.

Date/Time: 9/2/2010 1:49:45 PM

### **Flat\_802.11b CH1\_1M\_Host Secondary Landscape Close Body**

**DUT: AR5B195; Type: 802.11n-BT COMBO CARD; FCC ID: PPD-AR5B195**

Communication System: IEEE 802.11b; Frequency: 2412 MHz; Duty Cycle: 1:1

Medium parameters used:  $f = 2412$  MHz;  $\sigma = 1.9$  mho/m;  $\epsilon_r = 51.4$ ;  $\rho = 1000$  kg/m<sup>3</sup>

Phantom section: Flat Section

Measurement Standard: DASYS (IEEE/IEC)

DASY5 Configuration:

- Probe: EX3DV4 - SN3632; ConvF(7.4, 7.4, 7.4); Calibrated: 1/26/2010
- Sensor-Surface: 3mm (Mechanical Surface Detection)
- Electronics: DAE4 Sn779; Calibrated: 1/21/2010
- Phantom: ELI 4.0; Type: QDOVA001BB; Serial: 1036
- Measurement SW: DASYS, V5.0 Build 125; SEMCAD X Version 13.4 Build 125

### **Flat/Area Scan (71x121x1):**

Measurement grid:  $dx=15$ mm,  $dy=15$ mm

Maximum value of SAR (interpolated) = 1.73 mW/g

### **Flat/Zoom Scan (7x7x9)/Cube 0:**

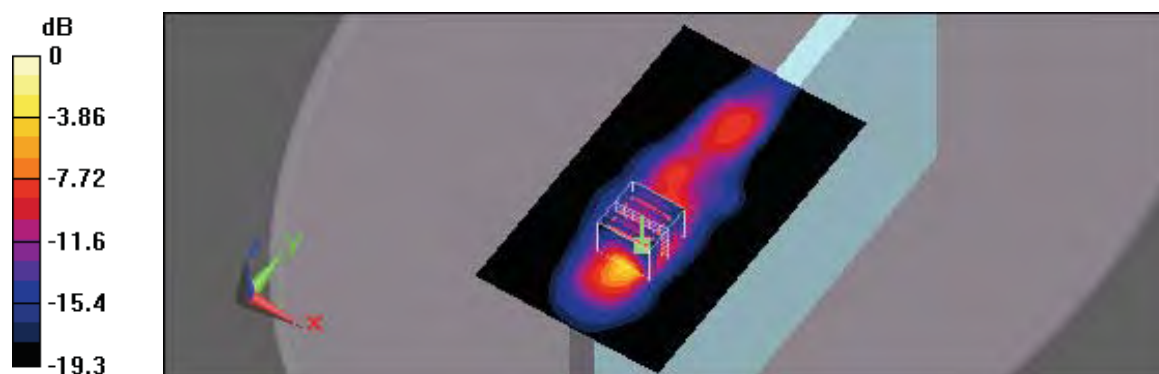
Measurement grid:  $dx=5$ mm,  $dy=5$ mm,  $dz=3$ mm

Reference Value = 10.5 V/m; Power Drift = 0.018 dB

Peak SAR (extrapolated) = 3.25 W/kg

**SAR(1 g) = 1.43 mW/g; SAR(10 g) = 0.594 mW/g**

Maximum value of SAR (measured) = 1.97 mW/g



0 dB = 1.97mW/g



Test Laboratory: A Test Lab Techno Corp.

Date/Time: 9/2/2010 1:16:39 PM

### **Flat\_802.11b CH6\_1M\_Host Secondary Landscape Close Body**

**DUT: AR5B195; Type: 802.11n-BT COMBO CARD; FCC ID: PPD-AR5B195**

Communication System: IEEE 802.11b; Frequency: 2437 MHz; Duty Cycle: 1:1

Medium parameters used:  $f = 2437 \text{ MHz}$ ;  $\sigma = 1.94 \text{ mho/m}$ ;  $\epsilon_r = 51.3$ ;  $\rho = 1000 \text{ kg/m}^3$

Phantom section: Flat Section

Measurement Standard: DASYS (IEEE/IEC)

DASY5 Configuration:

- Probe: EX3DV4 - SN3632; ConvF(7.4, 7.4, 7.4); Calibrated: 1/26/2010
- Sensor-Surface: 3mm (Mechanical Surface Detection)
- Electronics: DAE4 Sn779; Calibrated: 1/21/2010
- Phantom: ELI 4.0; Type: QDOVA001BB; Serial: 1036
- Measurement SW: DASYS, V5.0 Build 125; SEMCAD X Version 13.4 Build 125

### **Flat/Area Scan (71x121x1):**

Measurement grid:  $dx=15\text{mm}$ ,  $dy=15\text{mm}$

Maximum value of SAR (interpolated) = 1.5 mW/g

### **Flat/Zoom Scan (7x7x9)/Cube 0:**

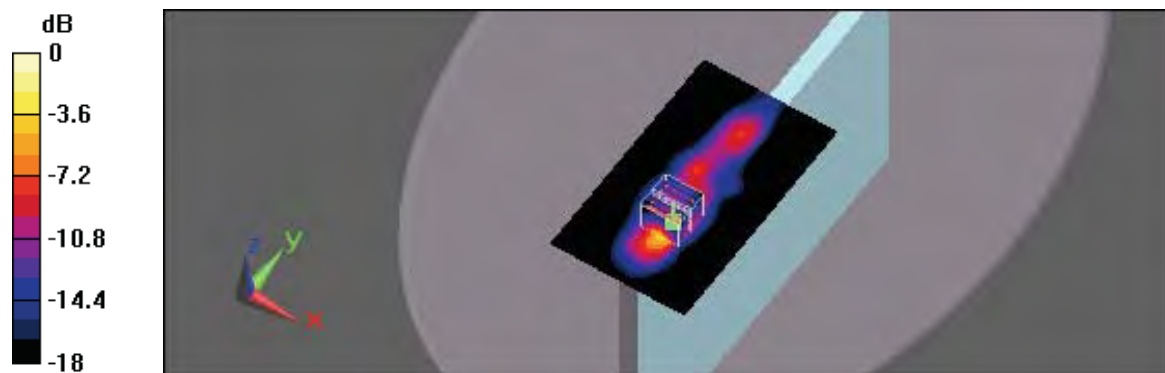
Measurement grid:  $dx=5\text{mm}$ ,  $dy=5\text{mm}$ ,  $dz=3\text{mm}$

Reference Value = 8.9 V/m; Power Drift = -0.048 dB

Peak SAR (extrapolated) = 2.77 W/kg

**SAR(1 g) = 1.23 mW/g; SAR(10 g) = 0.510 mW/g**

Maximum value of SAR (measured) = 1.69 mW/g



0 dB = 1.69mW/g

Test Laboratory: A Test Lab Techno Corp.

Date/Time: 9/2/2010 2:22:59 PM

### **Flat\_802.11b CH11\_1M\_Host Secondary LandscapeClose Body**

**DUT: AR5B195; Type: 802.11n-BT COMBO CARD; FCC ID: PPD-AR5B195**

Communication System: IEEE 802.11b; Frequency: 2462 MHz; Duty Cycle: 1:1

Medium parameters used:  $f = 2462 \text{ MHz}$ ;  $\sigma = 1.97 \text{ mho/m}$ ;  $\epsilon_r = 51.3$ ;  $\rho = 1000 \text{ kg/m}^3$

Phantom section: Flat Section

Measurement Standard: DASYS (IEEE/IEC)

DASY5 Configuration:

- Probe: EX3DV4 - SN3632; ConvF(7.4, 7.4, 7.4); Calibrated: 1/26/2010
- Sensor-Surface: 3mm (Mechanical Surface Detection)
- Electronics: DAE4 Sn779; Calibrated: 1/21/2010
- Phantom: ELI 4.0; Type: QDOVA001BB; Serial: 1036
- Measurement SW: DASYS, V5.0 Build 125; SEMCAD X Version 13.4 Build 125

### **Flat/Area Scan (71x121x1):**

Measurement grid:  $dx=15\text{mm}$ ,  $dy=15\text{mm}$

Maximum value of SAR (interpolated) = 1.27 mW/g

### **Flat/Zoom Scan (7x7x9)/Cube 0:**

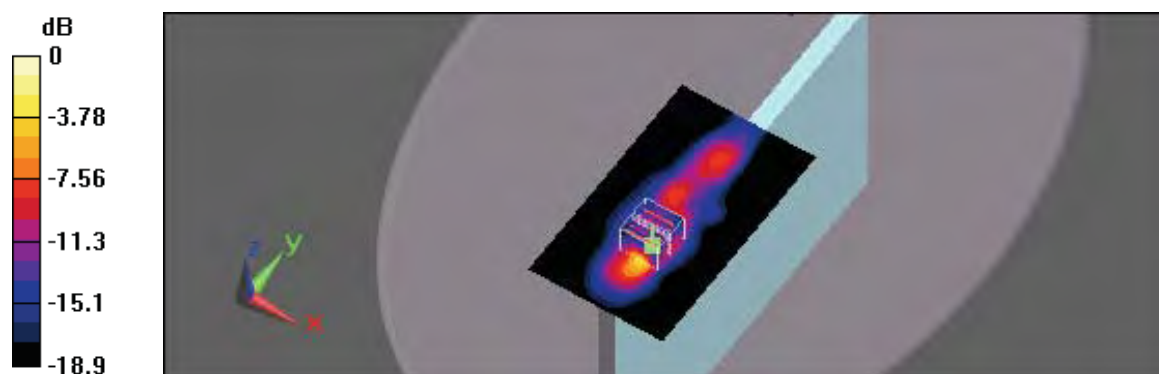
Measurement grid:  $dx=5\text{mm}$ ,  $dy=5\text{mm}$ ,  $dz=3\text{mm}$

Reference Value = 8.42 V/m; Power Drift = 0.00936 dB

Peak SAR (extrapolated) = 2.31 W/kg

**SAR(1 g) = 1.02 mW/g; SAR(10 g) = 0.426 mW/g**

Maximum value of SAR (measured) = 1.38 mW/g



0 dB = 1.38mW/g



Test Laboratory: A Test Lab Techno Corp.

Date/Time: 9/2/2010 3:34:42 PM

### **Flat\_802.11b CH6\_1M\_Host Primary Portrait Close Body**

**DUT: AR5B195; Type: 802.11n-BT COMBO CARD; FCC ID: PPD-AR5B195**

Communication System: IEEE 802.11b; Frequency: 2437 MHz; Duty Cycle: 1:1

Medium parameters used:  $f = 2437 \text{ MHz}$ ;  $\sigma = 1.94 \text{ mho/m}$ ;  $\epsilon_r = 51.3$ ;  $\rho = 1000 \text{ kg/m}^3$

Phantom section: Flat Section

Measurement Standard: DASYS (IEEE/IEC)

DASY5 Configuration:

- Probe: EX3DV4 - SN3632; ConvF(7.4, 7.4, 7.4); Calibrated: 1/26/2010
- Sensor-Surface: 3mm (Mechanical Surface Detection)
- Electronics: DAE4 Sn779; Calibrated: 1/21/2010
- Phantom: ELI 4.0; Type: QDOVA001BB; Serial: 1036
- Measurement SW: DASYS, V5.0 Build 125; SEMCAD X Version 13.4 Build 125

### **Flat/Area Scan (71x121x1):**

Measurement grid:  $dx=15\text{mm}$ ,  $dy=15\text{mm}$

Maximum value of SAR (interpolated) = 0.472 mW/g

### **Flat/Zoom Scan (7x7x9)/Cube 0:**

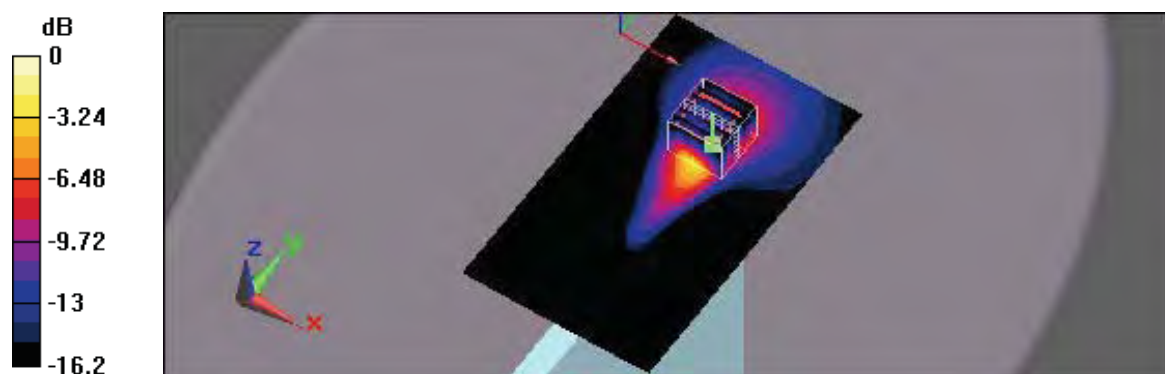
Measurement grid:  $dx=5\text{mm}$ ,  $dy=5\text{mm}$ ,  $dz=3\text{mm}$

Reference Value = 2.95 V/m; Power Drift = 0.170 dB

Peak SAR (extrapolated) = 1.04 W/kg

**SAR(1 g) = 0.422 mW/g; SAR(10 g) = 0.179 mW/g**

Maximum value of SAR (measured) = 0.565 mW/g



0 dB = 0.565mW/g



Test Laboratory: A Test Lab Techno Corp.

Date/Time: 9/2/2010 4:57:36 PM

### **Flat\_802.11n(2.4GHz) CH6\_HT20\_6.5M\_Host Bottom Close Body**

**DUT: AR5B195; Type: 802.11n-BT COMBO CARD; FCC ID: PPD-AR5B195**

Communication System: IEEE 802.11n(2.4GHz); Frequency: 2437 MHz; Duty Cycle: 1:1  
Medium parameters used:  $f = 2437 \text{ MHz}$ ;  $\sigma = 1.94 \text{ mho/m}$ ;  $\epsilon_r = 51.3$ ;  $\rho = 1000 \text{ kg/m}^3$

Phantom section: Flat Section

Measurement Standard: DASYS (IEEE/IEC)

DASY5 Configuration:

- Probe: EX3DV4 - SN3632; ConvF(7.4, 7.4, 7.4); Calibrated: 1/26/2010
- Sensor-Surface: 3mm (Mechanical Surface Detection)
- Electronics: DAE4 Sn779; Calibrated: 1/21/2010
- Phantom: ELI 4.0; Type: QDOVA001BB; Serial: 1036
- Measurement SW: DASYS, V5.0 Build 125; SEMCAD X Version 13.4 Build 125

### **Flat/Area Scan (81x111x1):**

Measurement grid:  $dx=15\text{mm}$ ,  $dy=15\text{mm}$

Maximum value of SAR (interpolated) = 0.801 mW/g

### **Flat/Zoom Scan (7x7x9)/Cube 0:**

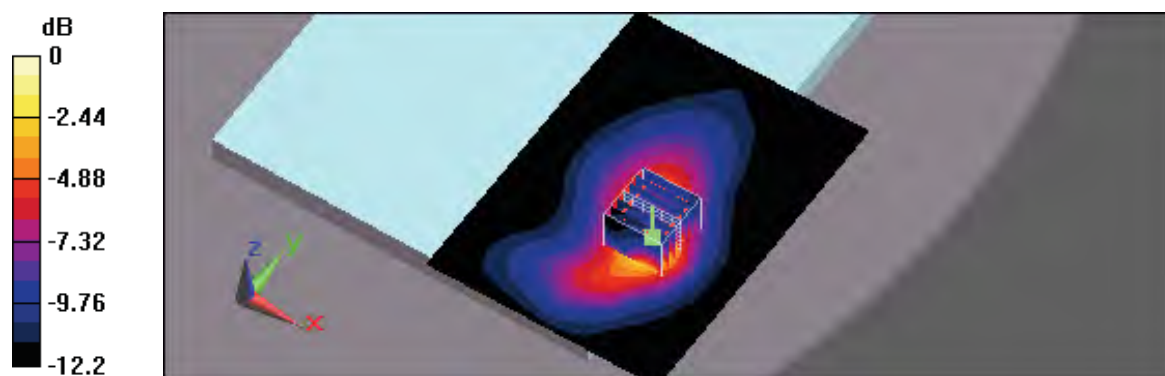
Measurement grid:  $dx=5\text{mm}$ ,  $dy=5\text{mm}$ ,  $dz=3\text{mm}$

Reference Value = 4.49 V/m; Power Drift = 0.063 dB

Peak SAR (extrapolated) = 1.42 W/kg

**SAR(1 g) = 0.664 mW/g; SAR(10 g) = 0.331 mW/g**

Maximum value of SAR (measured) = 0.849 mW/g



0 dB = 0.849mW/g



Test Laboratory: A Test Lab Techno Corp.

Date/Time: 9/2/2010 4:06:01 PM

### **Flat\_802.11n(2.4GHz) CH6\_HT20\_6.5M\_Host Secondary Landscape Close Body**

**DUT: AR5B195; Type: 802.11n-BT COMBO CARD; FCC ID: PPD-AR5B195**

Communication System: IEEE 802.11n(2.4GHz); Frequency: 2437 MHz; Duty Cycle: 1:1

Medium parameters used:  $f = 2437 \text{ MHz}$ ;  $\sigma = 1.94 \text{ mho/m}$ ;  $\epsilon_r = 51.3$ ;  $\rho = 1000 \text{ kg/m}^3$

Phantom section: Flat Section

Measurement Standard: DASY5 (IEEE/IEC)

DASY5 Configuration:

- Probe: EX3DV4 - SN3632; ConvF(7.4, 7.4, 7.4); Calibrated: 1/26/2010
- Sensor-Surface: 3mm (Mechanical Surface Detection)
- Electronics: DAE4 Sn779; Calibrated: 1/21/2010
- Phantom: ELI 4.0; Type: QDOVA001BB; Serial: 1036
- Measurement SW: DASY5, V5.0 Build 125; SEMCAD X Version 13.4 Build 125

#### **Flat/Area Scan (71x121x1):**

Measurement grid:  $dx=15\text{mm}$ ,  $dy=15\text{mm}$

Maximum value of SAR (interpolated) = 0.872 mW/g

#### **Flat/Zoom Scan (7x7x9)/Cube 0:**

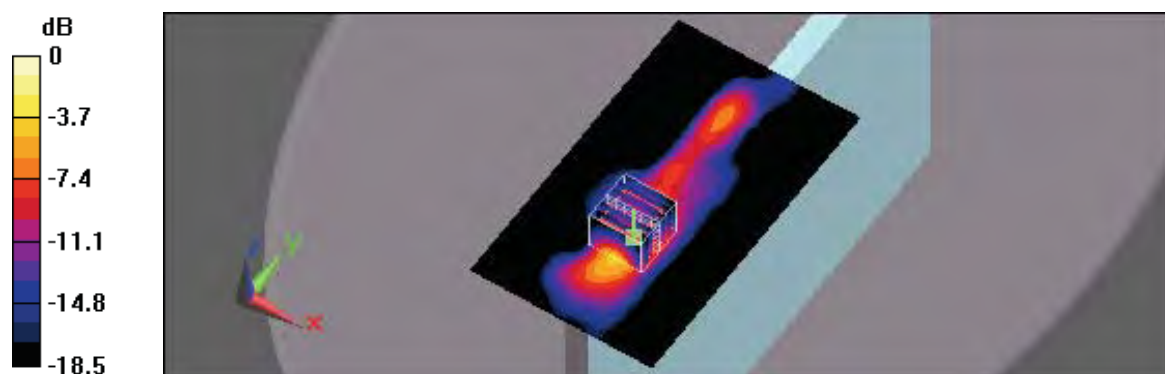
Measurement grid:  $dx=5\text{mm}$ ,  $dy=5\text{mm}$ ,  $dz=3\text{mm}$

Reference Value = 8.41 V/m; Power Drift = 0.135 dB

Peak SAR (extrapolated) = 1.79 W/kg

**SAR(1 g) = 0.787 mW/g; SAR(10 g) = 0.325 mW/g**

Maximum value of SAR (measured) = 1.08 mW/g



0 dB = 1.08mW/g

Test Laboratory: A Test Lab Techno Corp.

Date/Time: 9/2/2010 5:30:42 PM

### **Flat\_802.11n(2.4GHz) CH6\_HT20\_6.5M\_Host Primary Portrait Close Body**

**DUT: AR5B195; Type: 802.11n-BT COMBO CARD; FCC ID: PPD-AR5B195**

Communication System: IEEE 802.11n(2.4GHz); Frequency: 2437 MHz; Duty Cycle: 1:1

Medium parameters used:  $f = 2437 \text{ MHz}$ ;  $\sigma = 1.94 \text{ mho/m}$ ;  $\epsilon_r = 51.3$ ;  $\rho = 1000 \text{ kg/m}^3$

Phantom section: Flat Section

Measurement Standard: DASY5 (IEEE/IEC)

DASY5 Configuration:

- Probe: EX3DV4 - SN3632; ConvF(7.4, 7.4, 7.4); Calibrated: 1/26/2010
- Sensor-Surface: 3mm (Mechanical Surface Detection)
- Electronics: DAE4 Sn779; Calibrated: 1/21/2010
- Phantom: ELI 4.0; Type: QDOVA001BB; Serial: 1036
- Measurement SW: DASY5, V5.0 Build 125; SEMCAD X Version 13.4 Build 125

### **Flat/Area Scan (71x121x1):**

Measurement grid:  $dx=15\text{mm}$ ,  $dy=15\text{mm}$

Maximum value of SAR (interpolated) = 0.383 mW/g

### **Flat/Zoom Scan (7x7x9)/Cube 0:**

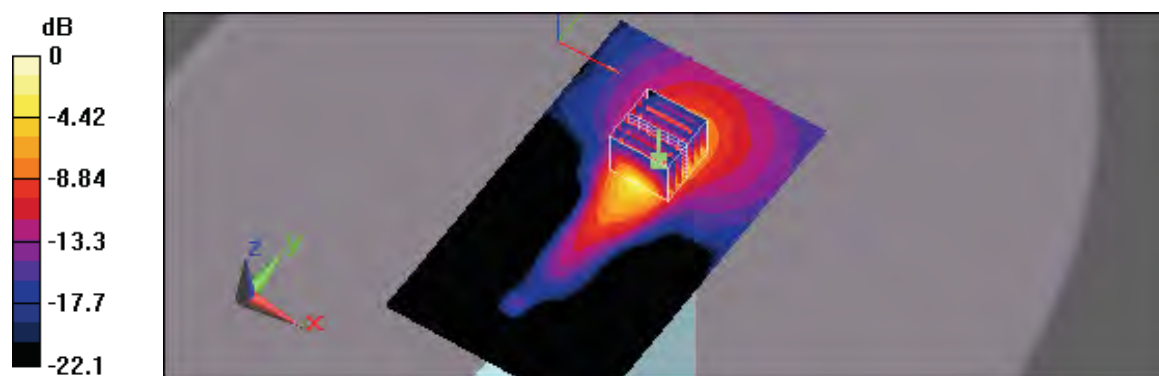
Measurement grid:  $dx=5\text{mm}$ ,  $dy=5\text{mm}$ ,  $dz=3\text{mm}$

Reference Value = 2.55 V/m; Power Drift = -0.093 dB

Peak SAR (extrapolated) = 0.894 W/kg

**SAR(1 g) = 0.362 mW/g; SAR(10 g) = 0.153 mW/g**

Maximum value of SAR (measured) = 0.500 mW/g



0 dB = 0.500mW/g



Test Laboratory: A Test Lab Techno Corp.

Date/Time: 9/3/2010 3:02:31 PM

### **Flat\_802.11n(2.4GHz) CH6\_HT40\_13.5M\_Host Bottom Close Body**

**DUT: AR5B195; Type: 802.11n-BT COMBO CARD; FCC ID: PPD-AR5B195**

Communication System: IEEE 802.11n(2.4GHz); Frequency: 2437 MHz; Duty Cycle: 1:1  
Medium parameters used:  $f = 2437 \text{ MHz}$ ;  $\sigma = 1.94 \text{ mho/m}$ ;  $\epsilon_r = 51.3$ ;  $\rho = 1000 \text{ kg/m}^3$

Phantom section: Flat Section

Measurement Standard: DASY5 (IEEE/IEC)

DASY5 Configuration:

- Probe: EX3DV4 - SN3632; ConvF(7.4, 7.4, 7.4); Calibrated: 1/26/2010
- Sensor-Surface: 3mm (Mechanical Surface Detection)
- Electronics: DAE4 Sn779; Calibrated: 1/21/2010
- Phantom: ELI 4.0; Type: QDOVA001BB; Serial: 1036
- Measurement SW: DASY5, V5.0 Build 125; SEMCAD X Version 13.4 Build 125

### **Flat/Area Scan (81x111x1):**

Measurement grid:  $dx=15\text{mm}$ ,  $dy=15\text{mm}$

Maximum value of SAR (interpolated) =  $0.637 \text{ mW/g}$

### **Flat/Zoom Scan (7x7x9)/Cube 0:**

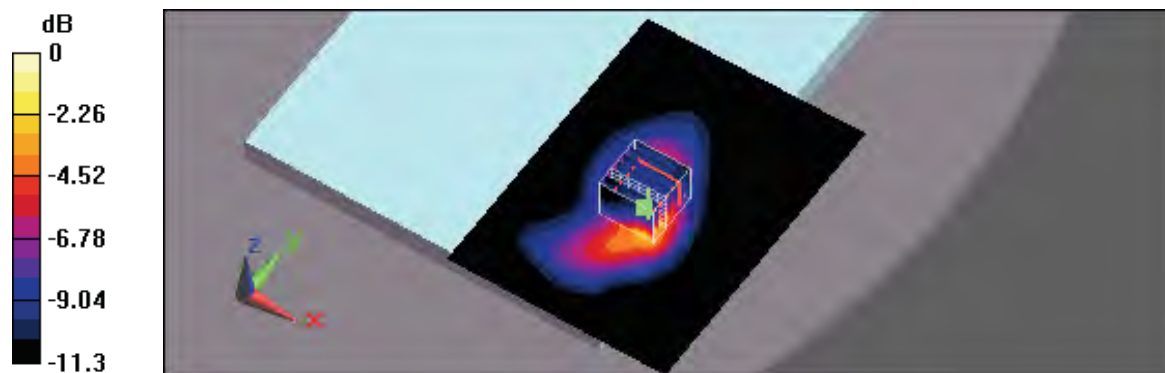
Measurement grid:  $dx=5\text{mm}$ ,  $dy=5\text{mm}$ ,  $dz=3\text{mm}$

Reference Value =  $4.01 \text{ V/m}$ ; Power Drift =  $0.079 \text{ dB}$

Peak SAR (extrapolated) =  $1.04 \text{ W/kg}$

**SAR(1 g) =  $0.514 \text{ mW/g}$ ; SAR(10 g) =  $0.258 \text{ mW/g}$**

Maximum value of SAR (measured) =  $0.692 \text{ mW/g}$



0 dB =  $0.692 \text{ mW/g}$



Test Laboratory: A Test Lab Techno Corp.

Date/Time: 9/3/2010 2:00:14 PM

### **Flat\_802.11n(2.4GHz) CH6\_HT40\_13.5M\_Host Secondary Landscape Close Body**

**DUT: AR5B195; Type: 802.11n-BT COMBO CARD; FCC ID: PPD-AR5B195**

Communication System: IEEE 802.11n(2.4GHz); Frequency: 2437 MHz; Duty Cycle: 1:1

Medium parameters used:  $f = 2437 \text{ MHz}$ ;  $\sigma = 1.94 \text{ mho/m}$ ;  $\epsilon_r = 51.3$ ;  $\rho = 1000 \text{ kg/m}^3$

Phantom section: Flat Section

Measurement Standard: DASYS (IEEE/IEC)

DASY5 Configuration:

- Probe: EX3DV4 - SN3632; ConvF(7.4, 7.4, 7.4); Calibrated: 1/26/2010
- Sensor-Surface: 3mm (Mechanical Surface Detection)
- Electronics: DAE4 Sn779; Calibrated: 1/21/2010
- Phantom: ELI 4.0; Type: QDOVA001BB; Serial: 1036
- Measurement SW: DASYS, V5.0 Build 125; SEMCAD X Version 13.4 Build 125

#### **Flat/Area Scan (61x121x1):**

Measurement grid:  $dx=15\text{mm}$ ,  $dy=15\text{mm}$

Maximum value of SAR (interpolated) = 0.704 mW/g

#### **Flat/Zoom Scan (7x7x9)/Cube 0:**

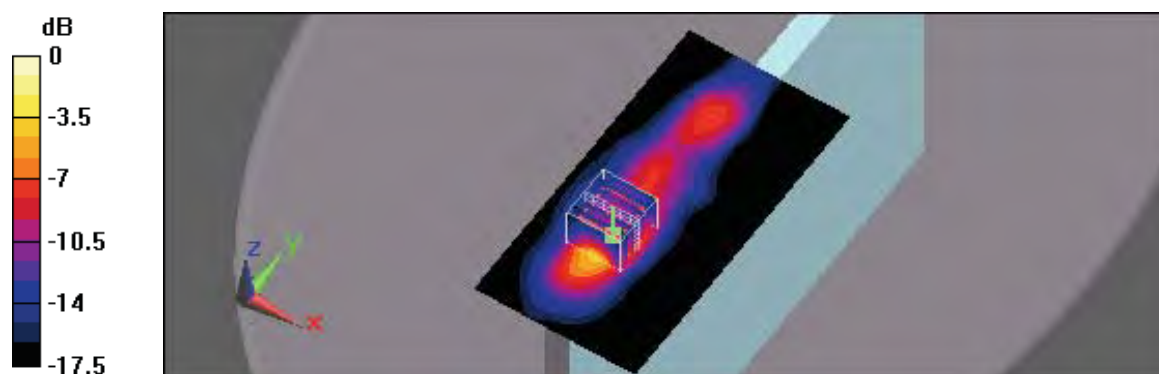
Measurement grid:  $dx=5\text{mm}$ ,  $dy=5\text{mm}$ ,  $dz=3\text{mm}$

Reference Value = 7.33 V/m; Power Drift = 0.134 dB

Peak SAR (extrapolated) = 1.36 W/kg

**SAR(1 g) = 0.612 mW/g; SAR(10 g) = 0.261 mW/g**

Maximum value of SAR (measured) = 0.827 mW/g



0 dB = 0.827mW/g

Test Laboratory: A Test Lab Techno Corp.

Date/Time: 9/3/2010 2:30:36 PM

### **Flat\_802.11n(2.4GHz) CH6\_HT40\_13.5M\_Host Primary Portrait Close Body**

**DUT: AR5B195; Type: 802.11n-BT COMBO CARD; FCC ID: PPD-AR5B195**

Communication System: IEEE 802.11n(2.4GHz); Frequency: 2437 MHz; Duty Cycle: 1:1

Medium parameters used:  $f = 2437 \text{ MHz}$ ;  $\sigma = 1.94 \text{ mho/m}$ ;  $\epsilon_r = 51.3$ ;  $\rho = 1000 \text{ kg/m}^3$

Phantom section: Flat Section

Measurement Standard: DASY5 (IEEE/IEC)

DASY5 Configuration:

- Probe: EX3DV4 - SN3632; ConvF(7.4, 7.4, 7.4); Calibrated: 1/26/2010
- Sensor-Surface: 3mm (Mechanical Surface Detection)
- Electronics: DAE4 Sn779; Calibrated: 1/21/2010
- Phantom: ELI 4.0; Type: QDOVA001BB; Serial: 1036
- Measurement SW: DASY5, V5.0 Build 125; SEMCAD X Version 13.4 Build 125

### **Flat/Area Scan (71x121x1):**

Measurement grid:  $dx=15\text{mm}$ ,  $dy=15\text{mm}$

Maximum value of SAR (interpolated) = 0.212 mW/g

### **Flat/Zoom Scan (7x7x9)/Cube 0:**

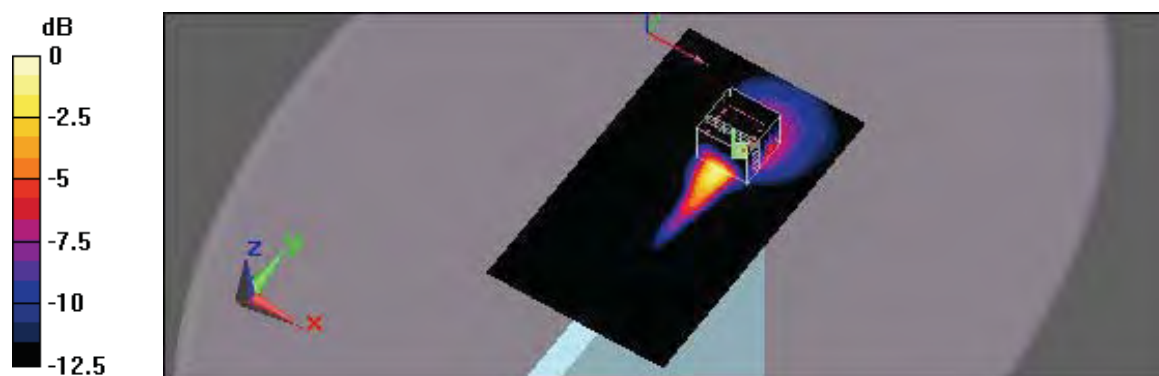
Measurement grid:  $dx=5\text{mm}$ ,  $dy=5\text{mm}$ ,  $dz=3\text{mm}$

Reference Value = 3.68 V/m; Power Drift = 0.00622 dB

Peak SAR (extrapolated) = 0.373 W/kg

**SAR(1 g) = 0.164 mW/g; SAR(10 g) = 0.073 mW/g**

Maximum value of SAR (measured) = 0.221 mW/g



0 dB = 0.221mW/g



## ***Appendix C - Calibration***

All of the instruments Calibration information are listed below.

- Dipole \_ D2450V2 SN:712 Calibration No.D2450V2-712\_Feb10
- Probe \_ EX3DV4 SN:3632 Calibration No.EX4-3632\_Jan10
- DAE \_ DAE4 SN:779 Calibration No.DAE4-779\_ Jan10

**Calibration Laboratory of  
Schmid & Partner  
Engineering AG**  
Zeughausstrasse 43, 8004 Zurich, Switzerland



**S** Schweizerischer Kalibrierdienst  
**C** Service suisse d'étalonnage  
**S** Servizio svizzero di taratura  
**S** Swiss Calibration Service

Accredited by the Swiss Accreditation Service (SAS)  
The Swiss Accreditation Service is one of the signatories to the EA  
Multilateral Agreement for the recognition of calibration certificates

Accreditation No.: **SCS 108**

Client **ATL (Auden)**

Certificate No: **D2450V2-712\_Feb10**

## CALIBRATION CERTIFICATE

Object **D2450V2 - SN: 712**

Calibration procedure(s) **QA CAL-05.v7  
Calibration procedure for dipole validation kits**



Calibration date: **February 19, 2010**

This calibration certificate documents the traceability to national standards, which realize the physical units of measurements (SI).  
The measurements and the uncertainties with confidence probability are given on the following pages and are part of the certificate.

All calibrations have been conducted in the closed laboratory facility; environment temperature  $(22 \pm 3)^{\circ}\text{C}$  and humidity  $< 70\%$ .

Calibration Equipment used (M&TE critical for calibration)

Primary Standards	ID #	Cal Date (Certificate No.)	Scheduled Calibration
Power meter EPM-442A	GB37480704	06-Oct-09 (No. 217-01086)	Oct-10
Power sensor HP 8481A	US37292783	06-Oct-09 (No. 217-01086)	Oct-10
Reference 20 dB Attenuator	SN: 5086 (20g)	31-Mar-09 (No. 217-01025)	Mar-10
Type-N mismatch combination	SN: 5047.2 / 06327	31-Mar-09 (No. 217-01029)	Mar-10
Reference Probe ES3DV3	SN: 3205	26-Jun-09 (No. ES3-3205_Jun09)	Jun-10
DAE4	SN: 601	07-Mar-09 (No. DAE4-601_Mar09)	Mar-10
Secondary Standards	ID #	Check Date (in house)	Scheduled Check
Power sensor HP 8481A	MY41092317	18-Oct-02 (in house check Oct-09)	In house check: Oct-11
RF generator R&S SMT-06	100005	4-Aug-99 (in house check Oct-09)	In house check: Oct-11
Network Analyzer HP 8753E	US37390585 S4206	18-Oct-01 (in house check Oct-09)	In house check: Oct-10

Calibrated by:	Name Jeton Kastrali	Function Laboratory Technician	Signature 
Approved by:	Katja Pokovic	Technical Manager	

Issued: February 19, 2010

This calibration certificate shall not be reproduced except in full without written approval of the laboratory.

Certificate No: D2450V2-712\_Feb10

Page 1 of 9

**Calibration Laboratory of**  
**Schmid & Partner**  
**Engineering AG**  
 Zeughausstrasse 43, 8004 Zurich, Switzerland



**S** Schweizerischer Kalibrierdienst  
**C** Service suisse d'étalonnage  
**S** Servizio svizzero di taratura  
**S** Swiss Calibration Service

Accredited by the Swiss Accreditation Service (SAS)  
 The Swiss Accreditation Service is one of the signatories to the EA  
 Multilateral Agreement for the recognition of calibration certificates

Accreditation No.: **SCS 108**

#### Glossary:

TSL	tissue simulating liquid
ConvF	sensitivity in TSL / NORM x,y,z
N/A	not applicable or not measured

#### Calibration is Performed According to the Following Standards:

- IEEE Std 1528-2003, "IEEE Recommended Practice for Determining the Peak Spatial-Averaged Specific Absorption Rate (SAR) in the Human Head from Wireless Communications Devices: Measurement Techniques", December 2003
- IEC 62209-1, "Procedure to measure the Specific Absorption Rate (SAR) for hand-held devices used in close proximity to the ear (frequency range of 300 MHz to 3 GHz)", February 2005
- Federal Communications Commission Office of Engineering & Technology (FCC OET), "Evaluating Compliance with FCC Guidelines for Human Exposure to Radiofrequency Electromagnetic Fields; Additional Information for Evaluating Compliance of Mobile and Portable Devices with FCC Limits for Human Exposure to Radiofrequency Emissions", Supplement C (Edition 01-01) to Bulletin 65

#### Additional Documentation:

- DASY4/5 System Handbook

#### Methods Applied and Interpretation of Parameters:

- Measurement Conditions:** Further details are available from the Validation Report at the end of the certificate. All figures stated in the certificate are valid at the frequency indicated.
- Antenna Parameters with TSL:** The dipole is mounted with the spacer to position its feed point exactly below the center marking of the flat phantom section, with the arms oriented parallel to the body axis.
- Feed Point Impedance and Return Loss:** These parameters are measured with the dipole positioned under the liquid filled phantom. The impedance stated is transformed from the measurement at the SMA connector to the feed point. The Return Loss ensures low reflected power. No uncertainty required.
- Electrical Delay:** One-way delay between the SMA connector and the antenna feed point. No uncertainty required.
- SAR measured:** SAR measured at the stated antenna input power.
- SAR normalized:** SAR as measured, normalized to an input power of 1 W at the antenna connector.
- SAR for nominal TSL parameters:** The measured TSL parameters are used to calculate the nominal SAR result.

### Measurement Conditions

DASY system configuration, as far as not given on page 1.

DASY Version	DASY5	V5.2
Extrapolation	Advanced Extrapolation	
Phantom	Modular Flat Phantom V4.9	
Distance Dipole Center - TSL	10 mm	with Spacer
Zoom Scan Resolution	dx, dy, dz = 5 mm	
Frequency	2450 MHz $\pm$ 1 MHz	

### Head TSL parameters

The following parameters and calculations were applied.

	Temperature	Permittivity	Conductivity
Nominal Head TSL parameters	22.0 °C	39.2	1.80 mho/m
Measured Head TSL parameters	(22.0 $\pm$ 0.2) °C	38.5 $\pm$ 6 %	1.76 mho/m $\pm$ 6 %
Head TSL temperature during test	(21.0 $\pm$ 0.2) °C	----	----

### SAR result with Head TSL

SAR averaged over 1 cm <sup>3</sup> (1 g) of Head TSL	Condition	
SAR measured	250 mW input power	13.3 mW / g
SAR normalized	normalized to 1W	53.2 mW / g
SAR for nominal Head TSL parameters	normalized to 1W	<b>53.5 mW / g <math>\pm</math> 17.0 % (k=2)</b>

SAR averaged over 10 cm <sup>3</sup> (10 g) of Head TSL	condition	
SAR measured	250 mW input power	6.24 mW / g
SAR normalized	normalized to 1W	25.0 mW / g
SAR for nominal Head TSL parameters	normalized to 1W	<b>25.0 mW / g <math>\pm</math> 16.5 % (k=2)</b>

### Body TSL parameters

The following parameters and calculations were applied.

	Temperature	Permittivity	Conductivity
Nominal Body TSL parameters	22.0 °C	52.7	1.95 mho/m
Measured Body TSL parameters	(22.0 ± 0.2) °C	51.7 ± 6 %	2.00 mho/m ± 6 %
Body TSL temperature during test	(21.2 ± 0.2) °C	---	---

### SAR result with Body TSL

SAR averaged over 1 cm <sup>3</sup> (1 g) of Body TSL	Condition	
SAR measured	250 mW input power	13.0 mW / g
SAR normalized	normalized to 1W	52.0 mW / g
SAR for nominal Body TSL parameters	normalized to 1W	<b>51.1 mW / g ± 17.0 % (k=2)</b>

SAR averaged over 10 cm <sup>3</sup> (10 g) of Body TSL	condition	
SAR measured	250 mW input power	5.97 mW / g
SAR normalized	normalized to 1W	23.9 mW / g
SAR for nominal Body TSL parameters	normalized to 1W	<b>23.7 mW / g ± 16.5 % (k=2)</b>

## Appendix

### Antenna Parameters with Head TSL

Impedance, transformed to feed point	$54.2 \Omega + 1.9 j\Omega$
Return Loss	- 27.1 dB

### Antenna Parameters with Body TSL

Impedance, transformed to feed point	$50.1 \Omega + 5.2 j\Omega$
Return Loss	- 25.7 dB

### General Antenna Parameters and Design

Electrical Delay (one direction)	1.144 ns
----------------------------------	----------

After long term use with 100W radiated power, only a slight warming of the dipole near the feedpoint can be measured.

The dipole is made of standard semirigid coaxial cable. The center conductor of the feeding line is directly connected to the second arm of the dipole. The antenna is therefore short-circuited for DC-signals.

No excessive force must be applied to the dipole arms, because they might bend or the soldered connections near the feedpoint may be damaged.

### Additional EUT Data

Manufactured by	SPEAG
Manufactured on	July 05, 2002

## DASY5 Validation Report for Head TSL

Date/Time: 17.02.2010 13:12:38

Test Laboratory: SPEAG, Zurich, Switzerland

**DUT: Dipole 2450 MHz; Type: D2450V2; Serial: D2450V2 - SN:712**

Communication System: CW; Frequency: 2450 MHz; Duty Cycle: 1:1

Medium: HSL U11 BB

Medium parameters used:  $f = 2450$  MHz;  $\sigma = 1.77$  mho/m;  $\epsilon_r = 38.7$ ;  $\rho = 1000$  kg/m<sup>3</sup>

Phantom section: Flat Section

Measurement Standard: DASY5 (IEEE/IEC/ANSI C63.19-2007)

### DASY5 Configuration:

- Probe: ES3DV3 - SN3205; ConvF(4.53, 4.53, 4.53); Calibrated: 26.06.2009
- Sensor-Surface: 3mm (Mechanical Surface Detection)
- Electronics: DAE4 Sn601; Calibrated: 07.03.2009
- Phantom: Flat Phantom 5.0 (front); Type: QD000P50AA; Serial: 1001
- Measurement SW: DASY5, V5.2 Build 157; SEMCAD X Version 14.0 Build 57

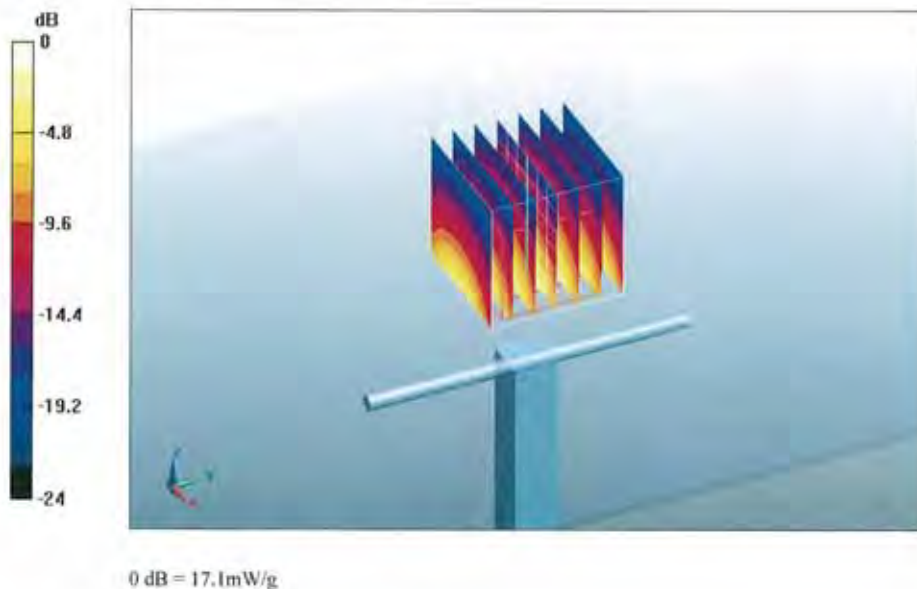
**Pin=250 mW /d=10mm, dist=3.0mm (ES-Probe)/Zoom Scan (7x7x7)/Cube 0: Measurement**  
grid: dx=5mm, dy=5mm, dz=5mm

Reference Value = 102.1 V/m; Power Drift = 0.032 dB

Peak SAR (extrapolated) = 27.2 W/kg

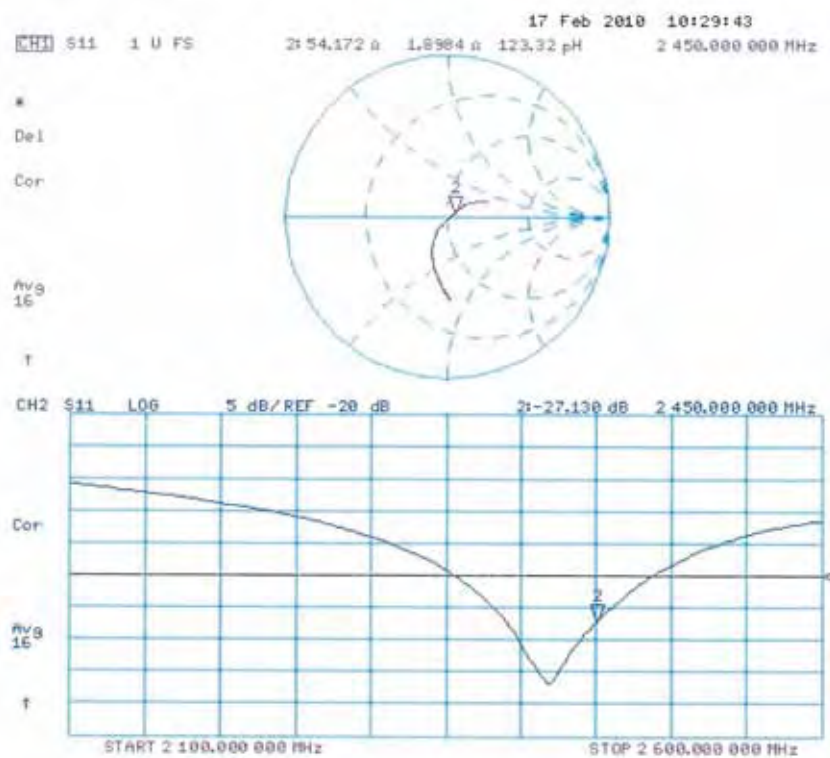
**SAR(1 g) = 13.3 mW/g; SAR(10 g) = 6.24 mW/g**

Maximum value of SAR (measured) = 17.1 mW/g





## Impedance Measurement Plot for Head TSL



## DASY5 Validation Report for Body

Date/Time: 19.02.2010 13:05:49

Test Laboratory: SPEAG, Zurich, Switzerland

**DUT: Dipole 2450 MHz; Type: D2450V2; Serial: D2450V2 - SN:712**

Communication System: CW; Frequency: 2450 MHz; Duty Cycle: 1:1

Medium: MSL U10 BB

Medium parameters used:  $f = 2450$  MHz;  $\sigma = 2.01$  mho/m;  $\epsilon_r = 51.8$ ;  $\rho = 1000$  kg/m<sup>3</sup>

Phantom section: Flat Section

Measurement Standard: DASY5 (IEEE/IEC/ANSI C63.19-2007)

### DASY5 Configuration:

- Probe: ES3DV3 - SN3205; ConvF(4.31, 4.31, 4.31); Calibrated: 26.06.2009
- Sensor-Surface: 3mm (Mechanical Surface Detection)
- Electronics: DAE4 Sn601; Calibrated: 07.03.2009
- Phantom: Flat Phantom 5.0 (back); Type: QD000P50AA; Serial: 1002
- Measurement SW: DASY5, V5.2 Build 157; SEMCAD X Version 14.0 Build 57

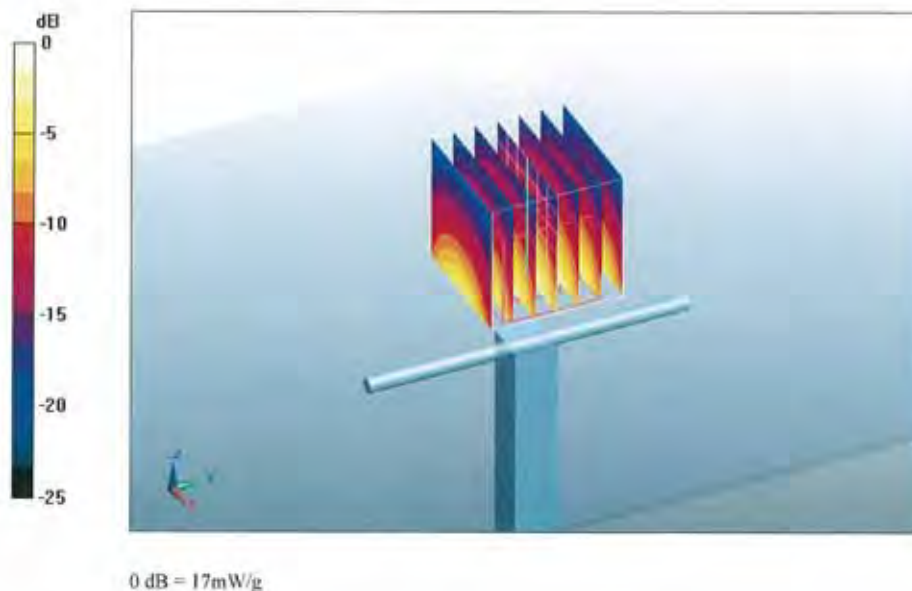
**Pin250 mW /d=10mm, dist=3.0mm (ES-Probe)/Zoom Scan (7x7x7)/Cube 0: Measurement**  
grid: dx=5mm, dy=5mm, dz=5mm

Reference Value = 94.5 V/m; Power Drift = 0.015 dB

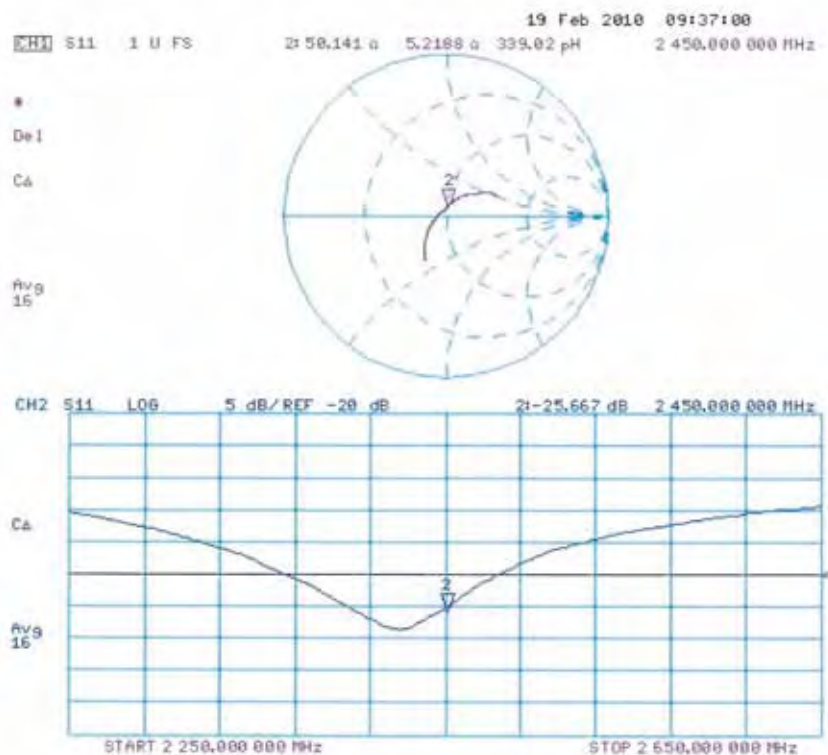
Peak SAR (extrapolated) = 29.5 W/kg

**SAR(1 g) = 13 mW/g; SAR(10 g) = 5.97 mW/g**

Maximum value of SAR (measured) = 17 mW/g



## Impedance Measurement Plot for Body TSL



**Calibration Laboratory of  
Schmid & Partner  
Engineering AG**  
Zeughausstrasse 43, 8004 Zurich, Switzerland



**S** Schweizerischer Kalibrierdienst  
**C** Service suisse d'étalonnage  
**S** Servizio svizzero di taratura  
**S** Swiss Calibration Service

Accredited by the Swiss Accreditation Service (SAS)  
The Swiss Accreditation Service is one of the signatories to the EA  
Multilateral Agreement for the recognition of calibration certificates

Accreditation No.: **SCS 108**

Client **ATL (Auden)**

Certificate No: **EX3-3632\_Jan10**

## CALIBRATION CERTIFICATE

Object **EX3DV4 - SN:3632**

Calibration procedure(s) **QA CAL-01.v6, QA CAL-12.v6, QA CAL-23.v3 and QA CAL-25.v2  
Calibration procedure for dosimetric E-field probes**

Calibration date: **January 26, 2010**

This calibration certificate documents the traceability to national standards, which realize the physical units of measurements (SI).  
The measurements and the uncertainties with confidence probability are given on the following pages and are part of the certificate.

All calibrations have been conducted in the closed laboratory facility: environment temperature  $(22 \pm 3)^{\circ}\text{C}$  and humidity  $< 70\%$ .

Calibration Equipment used (M&TE critical for calibration)

Primary Standards	ID #	Cal Date (Certificate No.)	Scheduled Calibration
Power meter E4419B	GB41293874	1-Apr-09 (No. 217-01030)	Apr-10
Power sensor E4412A	MY41495277	1-Apr-09 (No. 217-01030)	Apr-10
Power sensor E4412A	MY41498087	1-Apr-09 (No. 217-01030)	Apr-10
Reference 3 dB Attenuator	SN: S5054 (3c)	31-Mar-09 (No. 217-01026)	Mar-10
Reference 20 dB Attenuator	SN: S5086 (20b)	31-Mar-09 (No. 217-01028)	Mar-10
Reference 30 dB Attenuator	SN: S5129 (30b)	31-Mar-09 (No. 217-01027)	Mar-10
Reference Probe ES3DV2	SN: 3013	30-Dec-09 (No. ES3-3013_Dec09)	Dec-10
DAE4	SN: 660	29-Sep-09 (No. DAE4-660_Sep09)	Sep-10
Secondary Standards	ID #	Check Date (in house)	Scheduled Check
RF generator HP 8648C	US3642U01700	4-Aug-99 (in house check Oct-09)	In house check: Oct-11
Network Analyzer HP 8753E	US37380585	18-Oct-01 (in house check Oct-09)	In house check: Oct-10

	<b>Name</b>	<b>Function</b>	<b>Signature</b>
Calibrated by:	Katja Pokovic	Technical Manager	
Approved by:	Fin Bornholt	R&D Director	

Issued: January 26, 2010

This calibration certificate shall not be reproduced except in full without written approval of the laboratory.

Certificate No: EX3-3632\_Jan10

Page 1 of 11

**Calibration Laboratory of**  
**Schmid & Partner**  
**Engineering AG**  
 Zeughausstrasse 43, 8004 Zurich, Switzerland



**S** Schweizerischer Kalibrierdienst  
**S** Service suisse d'étalonnage  
**C** Servizio svizzero di taratura  
**S** Swiss Calibration Service

Accredited by the Swiss Accreditation Service (SAS)  
 The Swiss Accreditation Service is one of the signatories to the EA  
 Multilateral Agreement for the recognition of calibration certificates

Accreditation No.: **SCS 108**

#### Glossary:

TSL	tissue simulating liquid
NORM <sub>x,y,z</sub>	sensitivity in free space
ConvF	sensitivity in TSL / NORM <sub>x,y,z</sub>
DCP	diode compression point
CF	crest factor (1/duty_cycle) of the RF signal
A, B, C	modulation dependent linearization parameters
Polarization $\varphi$	$\varphi$ rotation around probe axis
Polarization $\vartheta$	$\vartheta$ rotation around an axis that is in the plane normal to probe axis (at measurement center), i.e., $\vartheta = 0$ is normal to probe axis

#### Calibration is Performed According to the Following Standards:

- IEEE Std 1528-2003, "IEEE Recommended Practice for Determining the Peak Spatial-Averaged Specific Absorption Rate (SAR) in the Human Head from Wireless Communications Devices: Measurement Techniques", December 2003
- IEC 62209-1, "Procedure to measure the Specific Absorption Rate (SAR) for hand-held devices used in close proximity to the ear (frequency range of 300 MHz to 3 GHz)", February 2005

#### Methods Applied and Interpretation of Parameters:

- NORM<sub>x,y,z</sub>**: Assessed for E-field polarization  $\vartheta = 0$  ( $f \leq 900$  MHz in TEM-cell;  $f > 1800$  MHz: R22 waveguide). NORM<sub>x,y,z</sub> are only intermediate values, i.e., the uncertainties of NORM<sub>x,y,z</sub> does not effect the E<sup>2</sup>-field uncertainty inside TSL (see below ConvF).
- NORM(f)<sub>x,y,z</sub>** = NORM<sub>x,y,z</sub> \* frequency\_response (see Frequency Response Chart). This linearization is implemented in DASY4 software versions later than 4.2. The uncertainty of the frequency response is included in the stated uncertainty of ConvF.
- DCP<sub>x,y,z</sub>**: DCP are numerical linearization parameters assessed based on the data of power sweep with CW signal (no uncertainty required). DCP does not depend on frequency nor media.
- A<sub>x,y,z</sub>; B<sub>x,y,z</sub>; C<sub>x,y,z</sub>; VR<sub>x,y,z</sub>**: A, B, C are numerical linearization parameters assessed based on the data of power sweep for specific modulation signal. The parameters do not depend on frequency nor media. VR is the maximum calibration range expressed in RMS voltage across the diode.
- ConvF and Boundary Effect Parameters**: Assessed in flat phantom using E-field (or Temperature Transfer Standard for  $f \leq 800$  MHz) and inside waveguide using analytical field distributions based on power measurements for  $f > 800$  MHz. The same setups are used for assessment of the parameters applied for boundary compensation (alpha, depth) of which typical uncertainty values are given. These parameters are used in DASY4 software to improve probe accuracy close to the boundary. The sensitivity in TSL corresponds to NORM<sub>x,y,z</sub> \* ConvF whereby the uncertainty corresponds to that given for ConvF. A frequency dependent ConvF is used in DASY version 4.4 and higher which allows extending the validity from  $\pm 50$  MHz to  $\pm 100$  MHz.
- Spherical isotropy (3D deviation from isotropy)**: in a field of low gradients realized using a flat phantom exposed by a patch antenna.
- Sensor Offset**: The sensor offset corresponds to the offset of virtual measurement center from the probe tip (on probe axis). No tolerance required.



EX3DV4 SN:3632

January 26, 2010

# Probe EX3DV4

## SN:3632

Manufactured:	November 1, 2007
Last calibrated:	January 13, 2009
Recalibrated:	January 26, 2010

Calibrated for DASY Systems

(Note: non-compatible with DASY2 system!)



EX3DV4 SN:3632

January 26, 2010

## DASY - Parameters of Probe: EX3DV4 SN:3632

### Basic Calibration Parameters

	Sensor X	Sensor Y	Sensor Z	Unc (k=2)
Norm ( $\mu V/(V/m)^2$ ) <sup>A</sup>	0.46	0.44	0.39	± 10.1%
DCP (mV) <sup>B</sup>	88.1	83.7	91.9	

### Modulation Calibration Parameters

UID	Communication System Name	PAR		A dB	B dBuV	C	VR mV	Unc <sup>E</sup> (k=2)
10000	CW	0.00	X	0.00	0.00	1.00	300	± 1.5%
			Y	0.00	0.00	1.00	300	
			Z	0.00	0.00	1.00	300	

The reported uncertainty of measurement is stated as the standard uncertainty of measurement multiplied by the coverage factor k=2, which for a normal distribution corresponds to a coverage probability of approximately 95%.

<sup>A</sup> The uncertainties of NormX,Y,Z do not affect the E<sup>2</sup>-field uncertainty inside TSL (see Pages 5 and 6).

<sup>B</sup> Numerical linearization parameter: uncertainty not required.

<sup>E</sup> Uncertainty is determined using the maximum deviation from linear response applying rectangular distribution and is expressed for the square of the field value.



EX3DV4 SN:3632

January 26, 2010

## DASY - Parameters of Probe: EX3DV4 SN:3632

### Calibration Parameter Determined in Head Tissue Simulating Media

f [MHz]	Validity [MHz] <sup>C</sup>	Permittivity	Conductivity	ConvF X	ConvF Y	ConvF Z	Alpha	Depth Unc (k=2)
450	± 50 / ± 100	43.5 ± 5%	0.87 ± 5%	9.64	9.64	9.64	0.24	1.00 ± 13.3%
835	± 50 / ± 100	41.5 ± 5%	0.90 ± 5%	9.11	9.11	9.11	0.63	0.67 ± 11.0%
1810	± 50 / ± 100	40.0 ± 5%	1.40 ± 5%	7.80	7.80	7.80	0.64	0.66 ± 11.0%
1900	± 50 / ± 100	40.0 ± 5%	1.40 ± 5%	7.81	7.81	7.81	0.76	0.59 ± 11.0%
2450	± 50 / ± 100	39.2 ± 5%	1.80 ± 5%	7.16	7.16	7.16	0.41	0.82 ± 11.0%

<sup>C</sup> The validity of ± 100 MHz only applies for DASY v4.4 and higher (see Page 2). The uncertainty is the RSS of the ConvF uncertainty at calibration frequency and the uncertainty for the indicated frequency band.



EX3DV4 SN:3632

January 26, 2010

## DASY - Parameters of Probe: EX3DV4 SN:3632

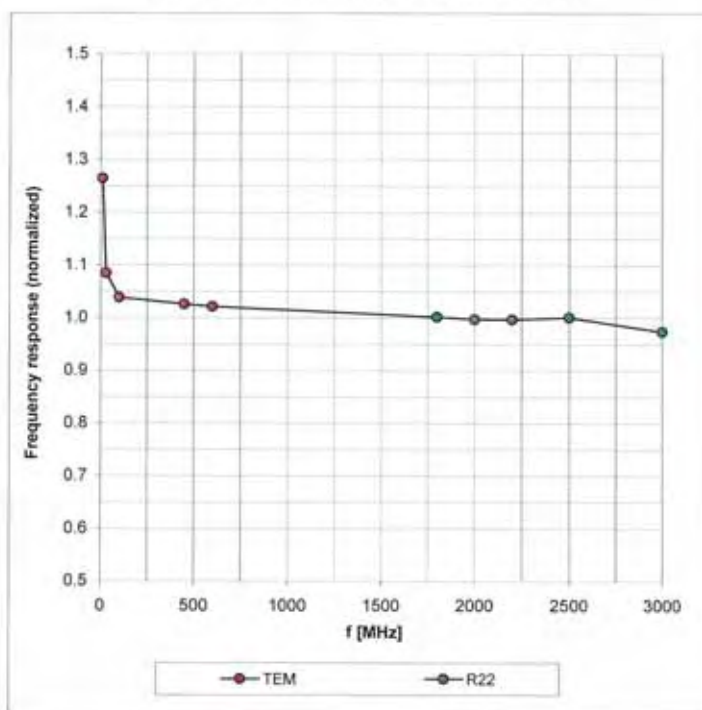
### Calibration Parameter Determined in Body Tissue Simulating Media

f [MHz]	Validity [MHz] <sup>c</sup>	Permittivity	Conductivity	ConvF X	ConvF Y	ConvF Z	Alpha	Depth Unc (k=2)
450	± 50 / ± 100	56.7 ± 5%	0.94 ± 5%	10.57	10.57	10.57	0.32	0.47 ± 13.3%
835	± 50 / ± 100	55.2 ± 5%	0.97 ± 5%	9.17	9.17	9.17	0.59	0.73 ± 11.0%
1810	± 50 / ± 100	53.3 ± 5%	1.52 ± 5%	7.84	7.84	7.84	0.68	0.68 ± 11.0%
1900	± 50 / ± 100	53.3 ± 5%	1.52 ± 5%	7.57	7.57	7.57	0.82	0.60 ± 11.0%
2450	± 50 / ± 100	52.7 ± 5%	1.95 ± 5%	7.40	7.40	7.40	0.45	0.80 ± 11.0%

<sup>c</sup> The validity of ± 100 MHz only applies for DASY v4.4 and higher (see Page 2). The uncertainty is the RSS of the ConvF uncertainty at calibration frequency and the uncertainty for the indicated frequency band.

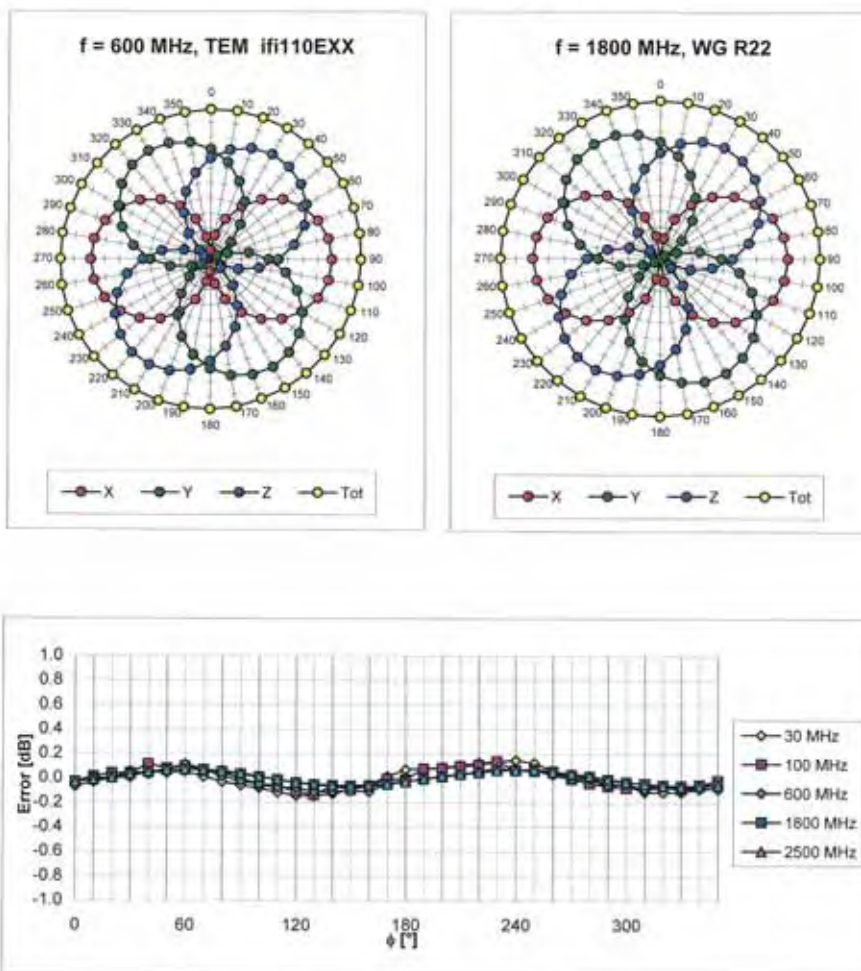
## Frequency Response of E-Field

(TEM-Cell: ifi110 EXX, Waveguide: R22)



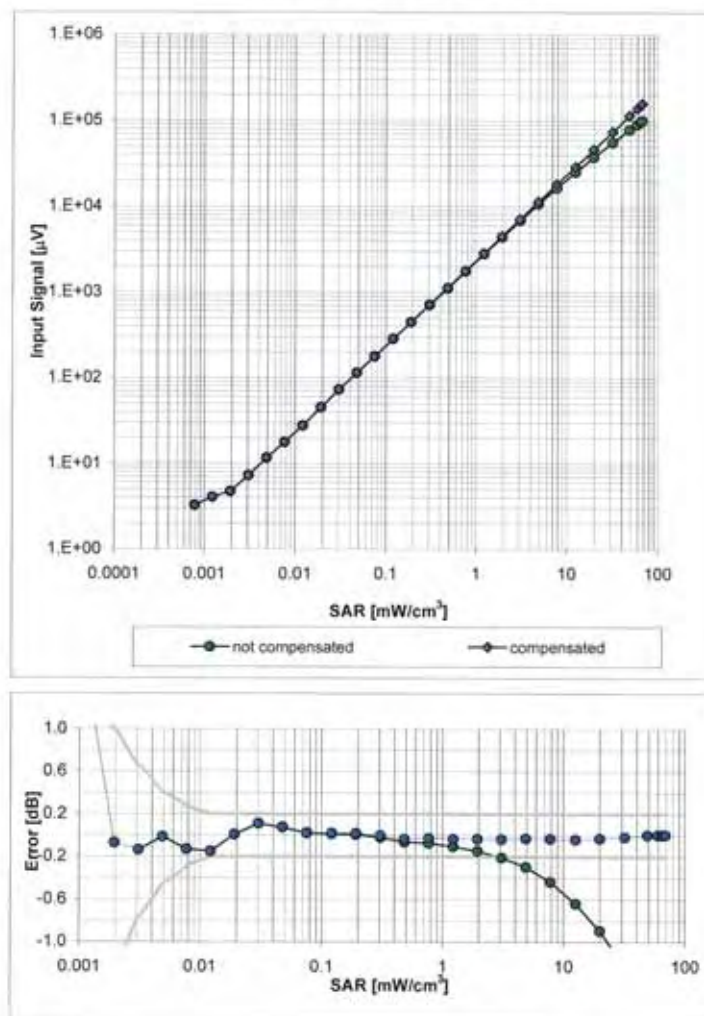
Uncertainty of Frequency Response of E-field:  $\pm 6.3\%$  ( $k=2$ )

### Receiving Pattern ( $\phi$ ), $\theta = 0^\circ$



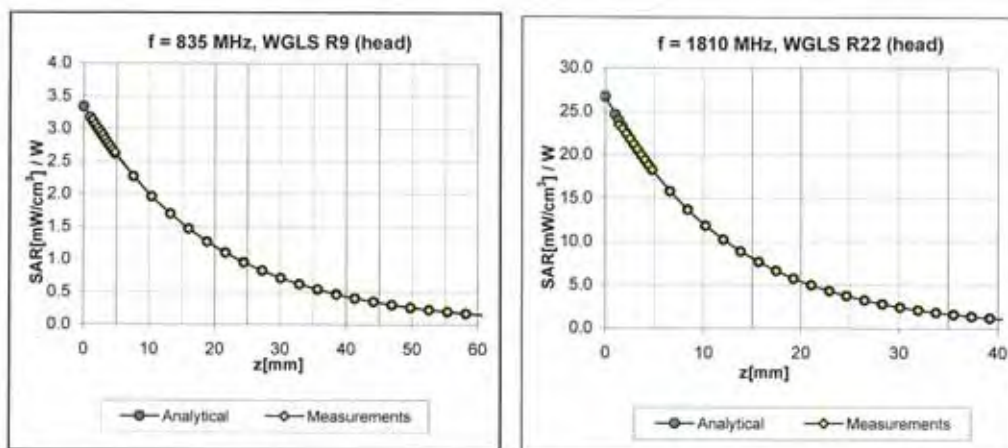
Uncertainty of Axial Isotropy Assessment:  $\pm 0.5\%$  (k=2)

### Dynamic Range $f(\text{SAR}_{\text{head}})$ (Waveguide R22, $f = 1800 \text{ MHz}$ )



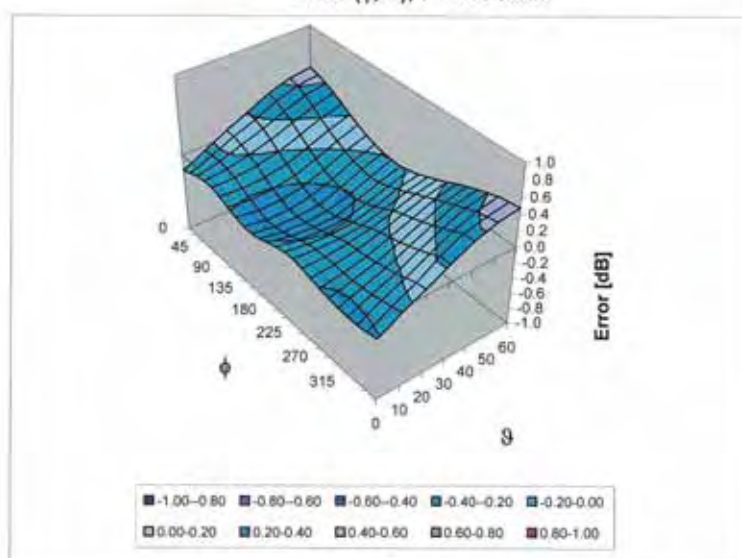
Uncertainty of Linearity Assessment:  $\pm 0.6\%$  ( $k=2$ )

## Conversion Factor Assessment



## Deviation from Isotropy in HSL

Error ( $\phi$ ,  $\theta$ ), f = 900 MHz



Uncertainty of Spherical Isotropy Assessment:  $\pm 2.6\%$  (k=2)



EX3DV4 SN:3632

January 26, 2010

## Other Probe Parameters

Sensor Arrangement	Triangular
Connector Angle (°)	Not applicable
Mechanical Surface Detection Mode	enabled
Optical Surface Detection Mode	disabled
Probe Overall Length	337 mm
Probe Body Diameter	10 mm
Tip Length	9 mm
Tip Diameter	2.5 mm
Probe Tip to Sensor X Calibration Point	1 mm
Probe Tip to Sensor Y Calibration Point	1 mm
Probe Tip to Sensor Z Calibration Point	1 mm
Recommended Measurement Distance from Surface	2 mm

**Calibration Laboratory of  
Schmid & Partner  
Engineering AG**  
Zeughausstrasse 43, 8004 Zurich, Switzerland



**S** Schweizerischer Kalibrierdienst  
**C** Service suisse d'étalonnage  
**S** Servizio svizzero di taratura  
**S** Swiss Calibration Service

Accredited by the Swiss Accreditation Service (SAS)

The Swiss Accreditation Service is one of the signatories to the EA  
Multilateral Agreement for the recognition of calibration certificates

Accreditation No.: **SCS 108**

Client **ATL (Auden)**

Certificate No: **DAE4-779\_Jan10**

## CALIBRATION CERTIFICATE

Object **DAE4 - SD 000 D04 BJ - SN: 779**

Calibration procedure(s) **QA CAL-06.v12  
Calibration procedure for the data acquisition electronics (DAE)**

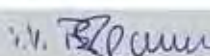
Calibration date: **January 21, 2010**

This calibration certificate documents the traceability to national standards, which realize the physical units of measurements (SI).  
The measurements and the uncertainties with confidence probability are given on the following pages and are part of the certificate.

All calibrations have been conducted in the closed laboratory facility: environment temperature  $(22 \pm 3)^{\circ}\text{C}$  and humidity  $< 70\%$ .

Calibration Equipment used (M&TE critical for calibration)

Primary Standards	ID #	Cal Date (Certificate No.)	Scheduled Calibration
Keithley Multimeter Type 2001	SN: 0810278	1-Oct-09 (No: 9055)	Oct-10
Secondary Standards	ID #	Check Date (in house)	Scheduled Check
Calibrator Box V1.1	SE UMS 006 AB 1004	05-Jun-09 (in house check)	In house check: Jun-10

Calibrated by:	Name <b>Andrea Guntli</b>	Function <b>Technician</b>	Signature 
Approved by:	<b>Fin Bornholt</b>	<b>R&amp;D Director</b>	

Issued: January 21, 2010

This calibration certificate shall not be reproduced except in full without written approval of the laboratory.

**Calibration Laboratory of  
Schmid & Partner  
Engineering AG**  
Zeughausstrasse 43, 8004 Zurich, Switzerland



**S** Schweizerischer Kalibrierdienst  
**C** Service suisse d'étalonnage  
**S** Servizio svizzero di taratura  
**S** Swiss Calibration Service

Accredited by the Swiss Accreditation Service (SAS)  
The Swiss Accreditation Service is one of the signatories to the EA  
Multilateral Agreement for the recognition of calibration certificates

Accreditation No.: **SCS 108**

## Glossary

**DAE** data acquisition electronics  
**Connector angle** information used in DASY system to align probe sensor X to the robot coordinate system.

## Methods Applied and Interpretation of Parameters

- **DC Voltage Measurement:** Calibration Factor assessed for use in DASY system by comparison with a calibrated instrument traceable to national standards. The figure given corresponds to the full scale range of the voltmeter in the respective range.
- **Connector angle:** The angle of the connector is assessed measuring the angle mechanically by a tool inserted. Uncertainty is not required.
- The following parameters as documented in the Appendix contain technical information as a result from the performance test and require no uncertainty.
  - **DC Voltage Measurement Linearity:** Verification of the Linearity at +10% and -10% of the nominal calibration voltage. Influence of offset voltage is included in this measurement.
  - **Common mode sensitivity:** Influence of a positive or negative common mode voltage on the differential measurement.
  - **Channel separation:** Influence of a voltage on the neighbor channels not subject to an input voltage.
  - **AD Converter Values with inputs shorted:** Values on the internal AD converter corresponding to zero input voltage
  - **Input Offset Measurement:** Output voltage and statistical results over a large number of zero voltage measurements.
  - **Input Offset Current:** Typical value for information; Maximum channel input offset current, not considering the input resistance.
  - **Input resistance:** DAE input resistance at the connector, during internal auto-zeroing and during measurement.
  - **Low Battery Alarm Voltage:** Typical value for information. Below this voltage, a battery alarm signal is generated.
  - **Power consumption:** Typical value for information. Supply currents in various operating modes.



### DC Voltage Measurement

A/D - Converter Resolution nominal

High Range: 1LSB = 6.1  $\mu$ V , full range = -100...+300 mV

Low Range: 1LSB = 61nV , full range = -1.....+3mV

DASY measurement parameters: Auto Zero Time: 3 sec; Measuring time: 3 sec

Calibration Factors	X	Y	Z
High Range	404.487 $\pm$ 0.1% (k=2)	403.723 $\pm$ 0.1% (k=2)	403.948 $\pm$ 0.1% (k=2)
Low Range	3.97046 $\pm$ 0.7% (k=2)	3.98719 $\pm$ 0.7% (k=2)	4.00014 $\pm$ 0.7% (k=2)

### Connector Angle

Connector Angle to be used in DASY system	84.5 $^{\circ}$ $\pm$ 1 $^{\circ}$
---	------------------------------------

## Appendix

### 1. DC Voltage Linearity

High Range	Reading ( $\mu\text{V}$ )	Difference ( $\mu\text{V}$ )	Error (%)
Channel X + Input	200010.5	1.14	0.00
Channel X + Input	20003.28	3.68	0.02
Channel X - Input	-19997.24	3.06	-0.02
Channel Y + Input	200009.6	0.87	0.00
Channel Y + Input	19999.83	0.43	0.00
Channel Y - Input	-19998.10	2.10	-0.01
Channel Z + Input	199998.4	0.15	0.00
Channel Z + Input	20000.44	1.04	0.01
Channel Z - Input	-19997.62	-0.01	-0.01

Low Range	Reading ( $\mu\text{V}$ )	Difference ( $\mu\text{V}$ )	Error (%)
Channel X + Input	1999.6	-0.33	-0.02
Channel X + Input	199.84	-0.16	-0.08
Channel X - Input	-200.02	-0.22	0.11
Channel Y + Input	2000.1	0.05	0.00
Channel Y + Input	198.87	-1.13	-0.56
Channel Y - Input	-201.72	-1.62	0.81
Channel Z + Input	2000.2	0.14	0.01
Channel Z + Input	199.12	-1.18	-0.59
Channel Z - Input	-200.60	-0.60	0.30

### 2. Common mode sensitivity

DASY measurement parameters: Auto Zero Time: 3 sec; Measuring time: 3 sec

	Common mode Input Voltage (mV)	High Range Average Reading ( $\mu\text{V}$ )	Low Range Average Reading ( $\mu\text{V}$ )
Channel X	200	-3.75	-5.42
	- 200	6.52	4.96
Channel Y	200	14.47	13.94
	- 200	-14.47	-14.52
Channel Z	200	3.70	3.28
	- 200	-3.73	-3.84

### 3. Channel separation

DASY measurement parameters: Auto Zero Time: 3 sec; Measuring time: 3 sec

	Input Voltage (mV)	Channel X ( $\mu\text{V}$ )	Channel Y ( $\mu\text{V}$ )	Channel Z ( $\mu\text{V}$ )
Channel X	200	-	2.60	0.09
Channel Y	200	1.31	-	3.04
Channel Z	200	2.43	-2.04	-

#### 4. AD-Converter Values with inputs shorted

DASY measurement parameters: Auto Zero Time: 3 sec; Measuring time: 3 sec

	High Range (LSB)	Low Range (LSB)
Channel X	15621	15863
Channel Y	15831	16095
Channel Z	16132	15816

#### 5. Input Offset Measurement

DASY measurement parameters: Auto Zero Time: 3 sec; Measuring time: 3 sec

Input 10MΩ

	Average (μV)	min. Offset (μV)	max. Offset (μV)	Std. Deviation (μV)
Channel X	-0.14	-1.27	1.10	0.43
Channel Y	-0.91	-2.36	0.81	0.61
Channel Z	-1.02	-1.92	0.28	0.44

#### 6. Input Offset Current

Nominal Input circuitry offset current on all channels: <25fA

#### 7. Input Resistance

	Zeroing (MOhm)	Measuring (MOhm)
Channel X	0.1999	202.7
Channel Y	0.1999	202.5
Channel Z	0.2000	202.7

#### 8. Low Battery Alarm Voltage (verified during pre test)

Typical values	Alarm Level (VDC)
Supply (+ Vcc)	+7.9
Supply (- Vcc)	-7.6

#### 9. Power Consumption (verified during pre test)

Typical values	Switched off (mA)	Stand by (mA)	Transmitting (mA)
Supply (+ Vcc)	+0.0	+6	+14
Supply (- Vcc)	-0.01	-8	-9