

# SOMApport 100

Model CPE-100-200

CAUTION: FOR INDOOR USE ONLY!  
USE ONLY WITH APPROVED POWER SUPPLY.  
INPUT RATING: 15 V DC 2.3 A MAXIMUM

**FCC** Tested To Comply  
With FCC Standards

**CUL** US LISTED

FOR HOME OR OFFICE USE

FCC ID: POZ-CPE-0140A-000

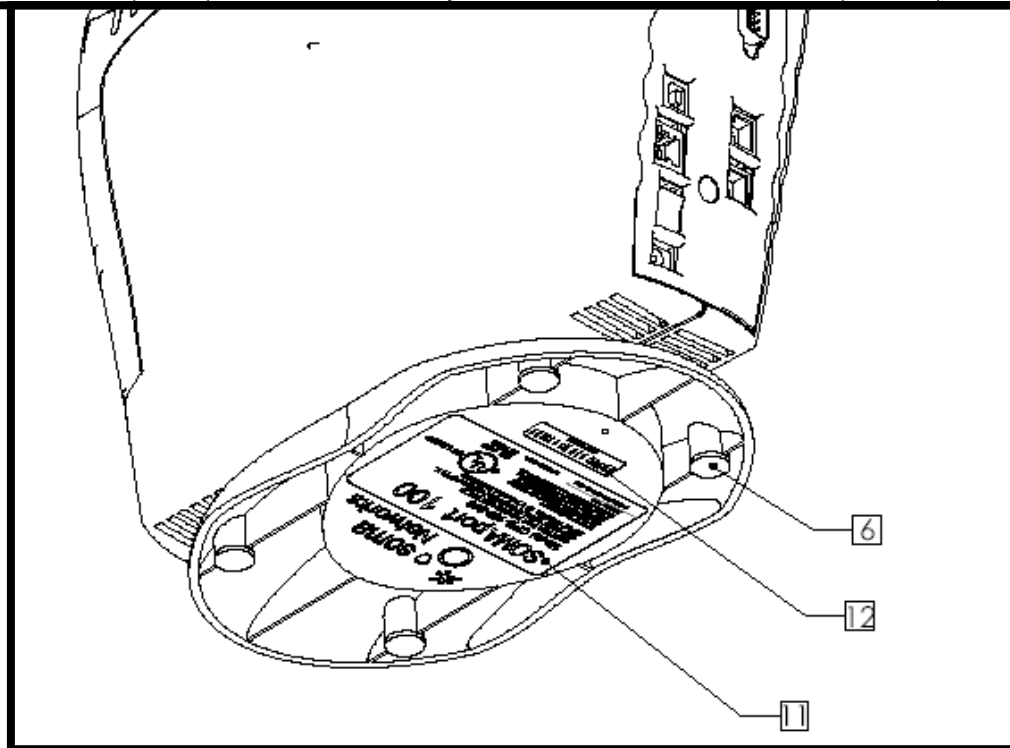
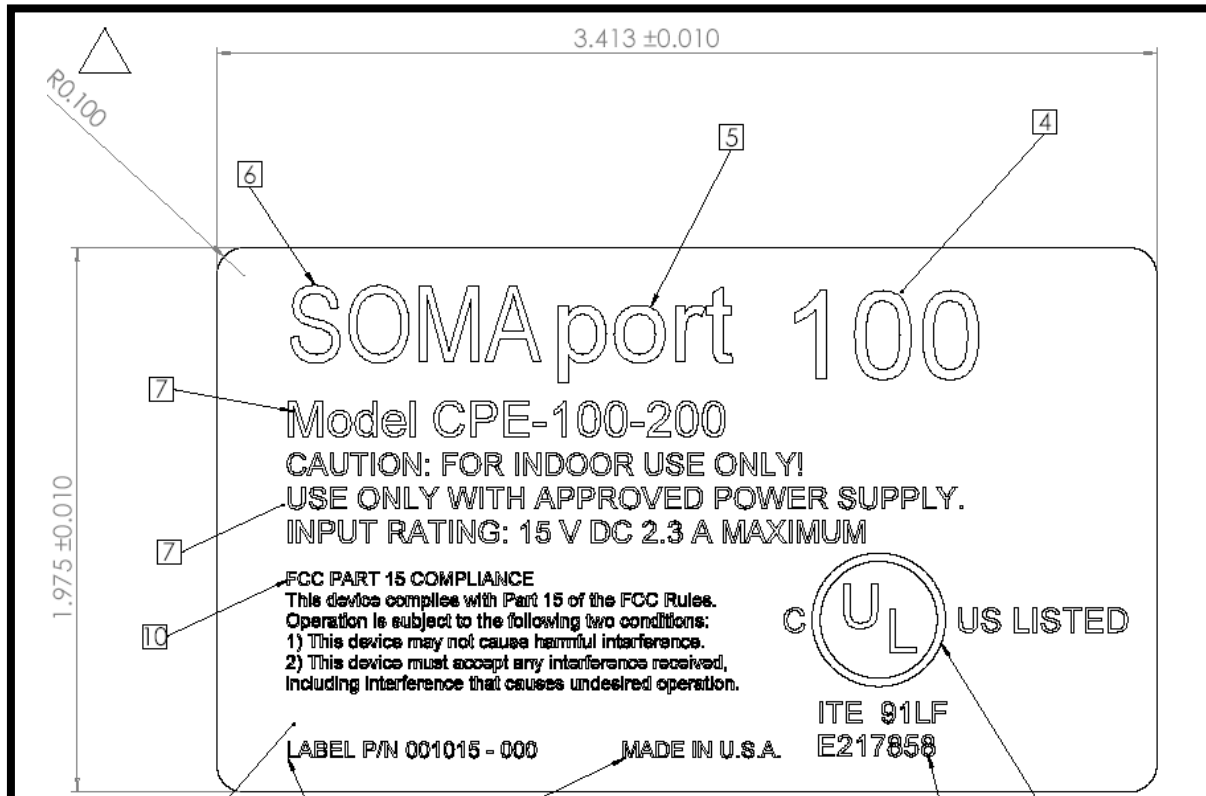
001015 - 000 Rev 04

MADE IN U.S.A.

ITE 91LF  
E217858

# Regulatory Label Information for SOMA Port 100

April 11, 2002, REV 01



11. ATTACH REGULATORY LABEL (ITEM 9) TO THE BASE AT NOTED LOCATION.

**NOTE:** INFORMATION FOR LABEL DWG IS FROM SIZE DWG. NO. 001015- 000 REV 03, LABEL, REGULATORY, U.S.A., PCS. LABEL PLACEMENT INFORMATION EXTRACTED FROM DRAWING NUMBER AD-100001-000, ASSY DWG, SYSTEM, 2-LINE SP, PCS, REV 02.