

Plot 1

Measurement Report for Handheld microphone, , , CW, Channel 0 (450.000 MHz)

Device Under Test Properties System performance Check

Model, Manufacturer	Dimensions [mm]	IMEI	DUT Type
Handheld microphone	N/A x N/A x N/A		Phone

Exposure Conditions

Phantom Section, TSL	Position, Test Distance [mm]	Band	Group, UID	Frequency [MHz], Channel Number	Conversion Factor	TSL Conductivity [S/m]	TSL Permittivity
Flat, HSL	,		CW, 0--	450.000, 0	10.72	0.851	44.7

Hardware Setup

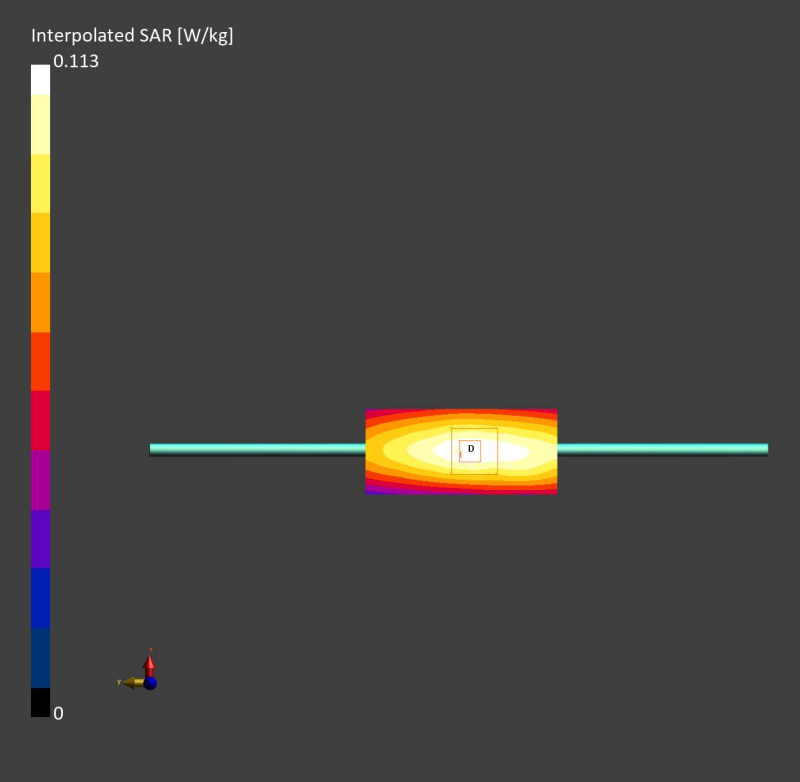
Phantom	TSL, Measured Date	Probe, Calibration Date	DAE, Calibration Date
Twin-SAM V8.0 (30deg probe tilt) – 2186	HSL450 Charge: xxxx, 2025–Mar–20	EX3DV4 – SN7871, 2024–04–24	DAE4ip Sn1859, 2024–03–26

Scans Setup

	Area Scan	Zoom Scan
Grid Extents [mm]	40.0 x 90.0	30.0 x 30.0 x 30.0
Grid Steps [mm]	10.0 x 15.0	6.0 x 6.0 x 1.5
Sensor Surface [mm]	3.0	1.4
Graded Grid	N/A	Yes
Grading Ratio	N/A	1.5
MAIA	N/A	N/A
Surface Detection	VMS + 6p	VMS + 6p
Scan Method	Measured	Measured

Measurement Results

	Area Scan	Zoom Scan
Date	2025–03–20, 13:56	2025–03–20, 14:02
psSAR1g [W/Kg]	0.099	0.10
psSAR10g [W/Kg]	0.069	0.066
Power Drift [dB]	–0.05	0.00
Power Scaling	Disabled	Disabled
Scaling Factor [dB]		
TSL Correction	No correction	No correction
M2/M1 [%]		82.7
Dist 3dB Peak [mm]		> 15.0



Plot 2

Measurement Report for Microphone, , , CW, Channel 0 (900.000 MHz)

Device Under Test Properties System performance Check

Model, Manufacturer	Dimensions [mm]	IMEI	DUT Type
Microphone, Wisycom	N/A x N/A x N/A		Phone

Exposure Conditions

Phantom Section, TSL	Position, Test Distance [mm]	Band	Group, UID	Frequency [MHz], Channel Number	Conversion Factor	TSL Conductivity [S/m]	TSL Permittivity
Flat, HSL	,		CW, 0--	900.000, 0	8.66	0.934	43.1

Hardware Setup

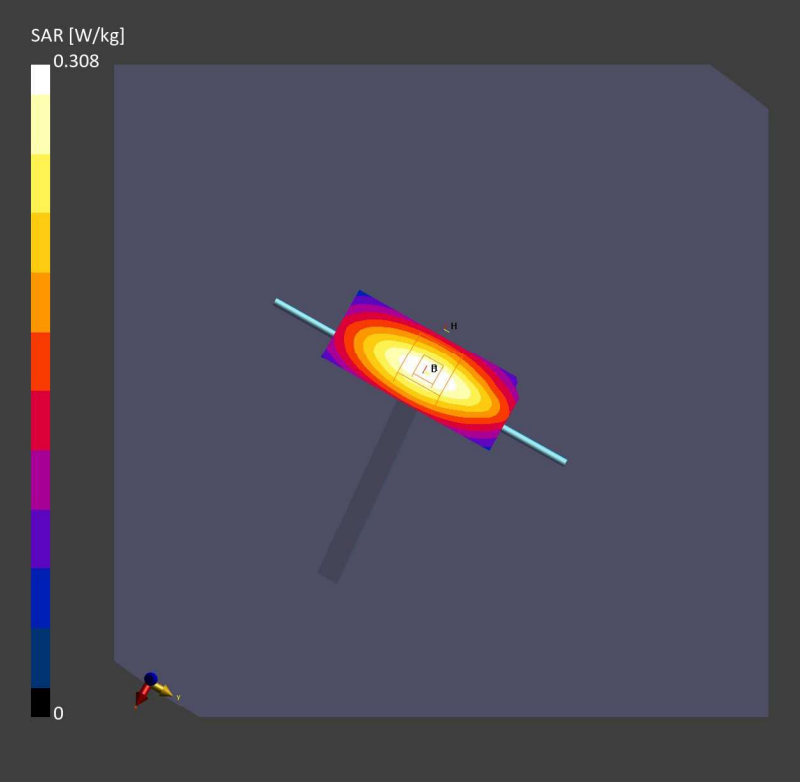
Phantom	TSL, Measured Date	Probe, Calibration Date	DAE, Calibration Date
ELI V8.0 (20deg probe tilt) – 2237	HBBL-600-10000 Charge:xxxx, 2025-Mar-24	EX3DV4 – SN7871, 2024-04-24	DAE4ip Sn1859, 2024-03-26

Scans Setup

	Area Scan	Zoom Scan
Grid Extents [mm]	40.0 x 90.0	30.0 x 30.0 x 30.0
Grid Steps [mm]	10.0 x 15.0	6.0 x 6.0 x 1.5
Sensor Surface [mm]	3.0	1.4
Graded Grid	N/A	Yes
Grading Ratio	N/A	1.5
MAIA	N/A	N/A
Surface Detection	All points	All points
Scan Method	Measured	Measured

Measurement Results

	Area Scan	Zoom Scan
Date	2025-03-24, 13:26	2025-03-24, 13:34
psSAR1g [W/Kg]	0.230	0.230
psSAR10g [W/Kg]	0.150	0.148
Power Drift [dB]	0.01	0.03
Power Scaling	Disabled	Disabled
Scaling Factor [dB]		
TSL Correction	No correction	No correction
M2/M1 [%]		86.9
Dist 3dB Peak [mm]		16.8



Plot 3

Measurement Report for Microphone, FRONT, D450, CW, Channel 70 (470.000 MHz)

Device Under Test Properties

Model, Manufacturer	Dimensions [mm]	IMEI	DUT Type
Microphone, Wisycom	270.0 x 50.0 x 48.0		Phone

Exposure Conditions

Phantom Section, TSL	Position, Test Distance [mm]	Band	Group, UID	Frequency [MHz], Channel Number	Conversion Factor	TSL Conductivity [S/m]	TSL Permittivity
Flat, HSL	FRONT, 0.00	D450	CW, 0--	470.000, 70	10.72	0.868	44.4

Hardware Setup

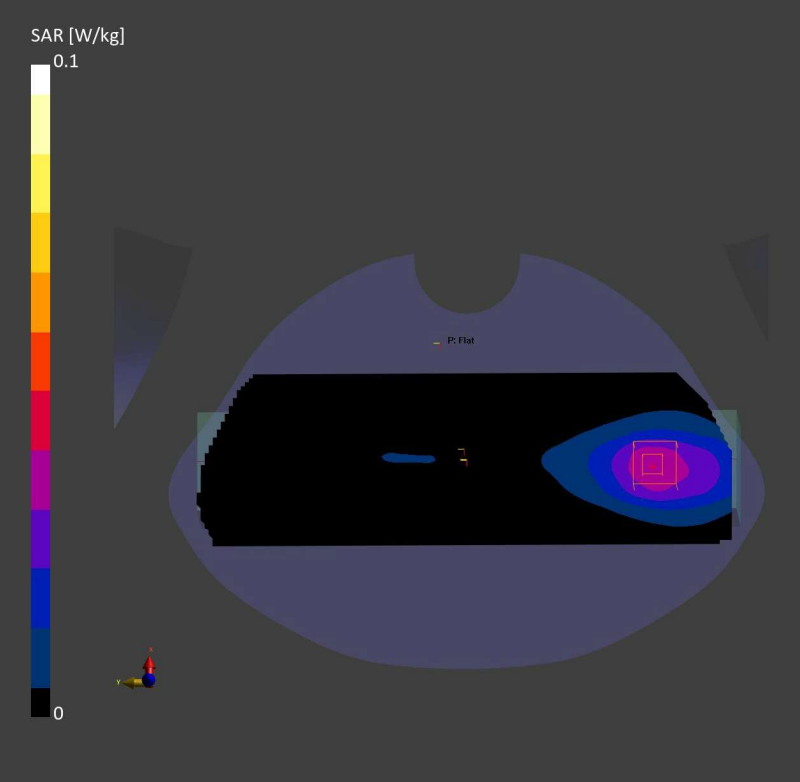
Phantom	TSL, Measured Date	Probe, Calibration Date	DAE, Calibration Date
Twin-SAM V8.0 (30deg probe tilt) – 2186	HSL450 Charge: xxxx, 2025-Mar-20	EX3DV4 – SN7871, 2024-04-24	DAE4ip Sn1859, 2024-03-26

Scans Setup

	Area Scan	Zoom Scan
Grid Extents [mm]	90.0 x 300.0	30.0 x 30.0 x 30.0
Grid Steps [mm]	15.0 x 15.0	5.7 x 5.7 x 1.5
Sensor Surface [mm]	3.0	1.4
Graded Grid	N/A	Yes
Grading Ratio	N/A	1.5
MAIA	Y	N/A
Surface Detection	VMS + 6p	VMS + 6p
Scan Method	Measured	Measured

Measurement Results

	Area Scan	Zoom Scan
Date	2025-03-21, 15:17	2025-03-21, 15:25
psSAR1g [W/Kg]	0.043	0.053
psSAR10g [W/Kg]	0.029	0.026
Power Drift [dB]	-0.05	-0.03
Power Scaling	Disabled	Disabled
Scaling Factor [dB]		
TSL Correction	No correction	No correction
M2/M1 [%]		64.0
Dist 3dB Peak [mm]		6.9



Plot 4

Measurement Report for Microphone, FRONT, D450, CW, Channel 93 (493.000 MHz)

Device Under Test Properties

Model, Manufacturer	Dimensions [mm]	IMEI	DUT Type
Microphone, Wisycom	270.0 x 50.0 x 48.0		Phone

Exposure Conditions

Phantom Section, TSL	Position, Test Distance [mm]	Band	Group, UID	Frequency [MHz], Channel Number	Conversion Factor	TSL Conductivity [S/m]	TSL Permittivity
Flat, HSL	FRONT, 0.00	D450	CW, 0--	493.000, 93	10.72	0.887	44.0

Hardware Setup

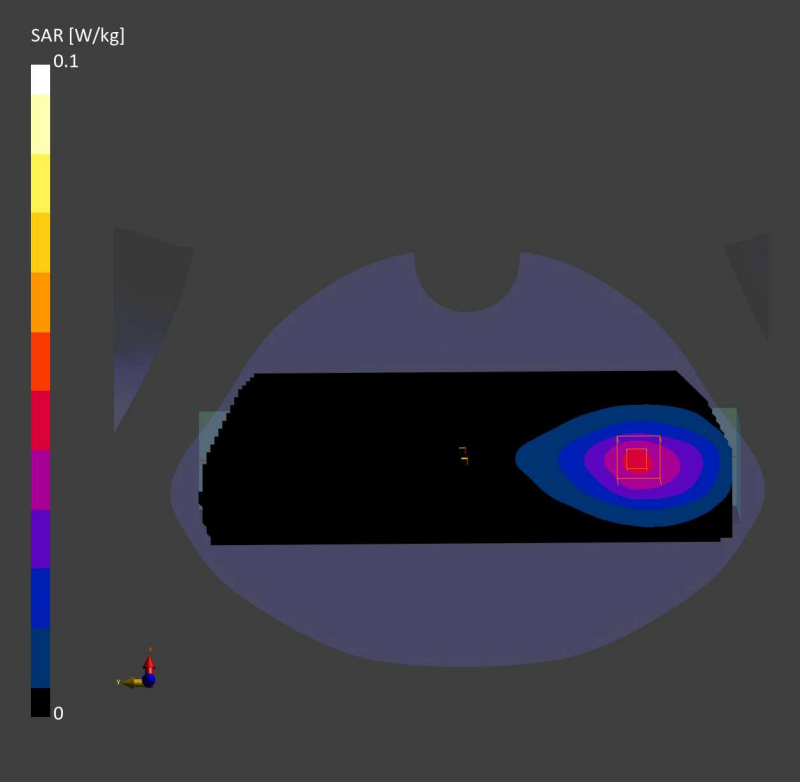
Phantom	TSL, Measured Date	Probe, Calibration Date	DAE, Calibration Date
Twin-SAM V8.0 (30deg probe tilt) – 2186	HSL450 Charge: xxxx, 2025-Mar-20	EX3DV4 – SN7871, 2024-04-24	DAE4ip Sn1859, 2024-03-26

Scans Setup

	Area Scan	Zoom Scan
Grid Extents [mm]	90.0 x 300.0	30.0 x 30.0 x 30.0
Grid Steps [mm]	15.0 x 15.0	6.0 x 6.0 x 1.5
Sensor Surface [mm]	3.0	1.4
Graded Grid	N/A	Yes
Grading Ratio	N/A	1.5
MAIA	Y	Y
Surface Detection	VMS + 6p	VMS + 6p
Scan Method	Measured	Measured

Measurement Results

	Area Scan	Zoom Scan
Date	2025-03-21, 15:31	2025-03-21, 15:38
psSAR1g [W/Kg]	0.041	0.048
psSAR10g [W/Kg]	0.028	0.026
Power Drift [dB]	-0.10	0.02
Power Scaling	Disabled	Disabled
Scaling Factor [dB]		
TSL Correction	No correction	No correction
M2/M1 [%]		65.1
Dist 3dB Peak [mm]		10.3



Plot 5

Measurement Report for Microphone, FRONT, D450, CW, Channel 100 (500.000 MHz)

Device Under Test Properties

Model, Manufacturer	Dimensions [mm]	IMEI	DUT Type
Microphone, Wisycom	270.0 x 50.0 x 48.0		Phone

Exposure Conditions

Phantom Section, TSL	Position, Test Distance [mm]	Band	Group, UID	Frequency [MHz], Channel Number	Conversion Factor	TSL Conductivity [S/m]	TSL Permittivity
Flat, HSL	FRONT, 0.00	D450	CW, 0--	500.000, 100	10.72	0.893	43.9

Hardware Setup

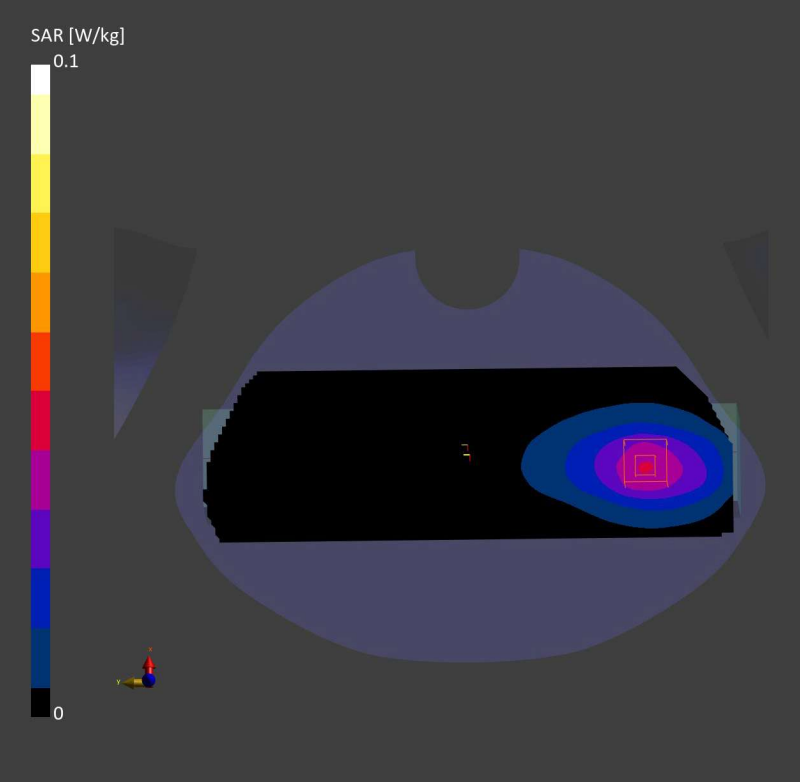
Phantom	TSL, Measured Date	Probe, Calibration Date	DAE, Calibration Date
Twin-SAM V8.0 (30deg probe tilt) – 2186	HSL450 Charge: xxxx, 2025–Mar–20	EX3DV4 – SN7871, 2024–04–24	DAE4ip Sn1859, 2024–03–26

Scans Setup

	Area Scan	Zoom Scan
Grid Extents [mm]	90.0 x 300.0	30.0 x 30.0 x 30.0
Grid Steps [mm]	15.0 x 15.0	6.0 x 6.0 x 1.5
Sensor Surface [mm]	3.0	1.4
Graded Grid	N/A	Yes
Grading Ratio	N/A	1.5
MAIA	Y	Y
Surface Detection	VMS + 6p	VMS + 6p
Scan Method	Measured	Measured

Measurement Results

	Area Scan	Zoom Scan
Date	2025–03–21, 15:44	2025–03–21, 15:51
psSAR1g [W/Kg]	0.042	0.046
psSAR10g [W/Kg]	0.029	0.025
Power Drift [dB]	–0.10	–0.00
Power Scaling	Disabled	Disabled
Scaling Factor [dB]		
TSL Correction	No correction	No correction
M2/M1 [%]		70.8
Dist 3dB Peak [mm]		8.1



Plot 6

Measurement Report for Microphone, FRONT, D900, CW, Channel 91 (941.000 MHz)

Device Under Test Properties

Model, Manufacturer	Dimensions [mm]	IMEI	DUT Type
Microphone, Wisycom	270.0 x 50.0 x 48.0		Phone

Exposure Conditions

Phantom Section, TSL	Position, Test Distance [mm]	Band	Group, UID	Frequency [MHz], Channel Number	Conversion Factor	TSL Conductivity [S/m]	TSL Permittivity
Flat, HSL	FRONT, 0.00	D900	CW, 0--	941.000, 91	8.66	0.948	42.9

Hardware Setup

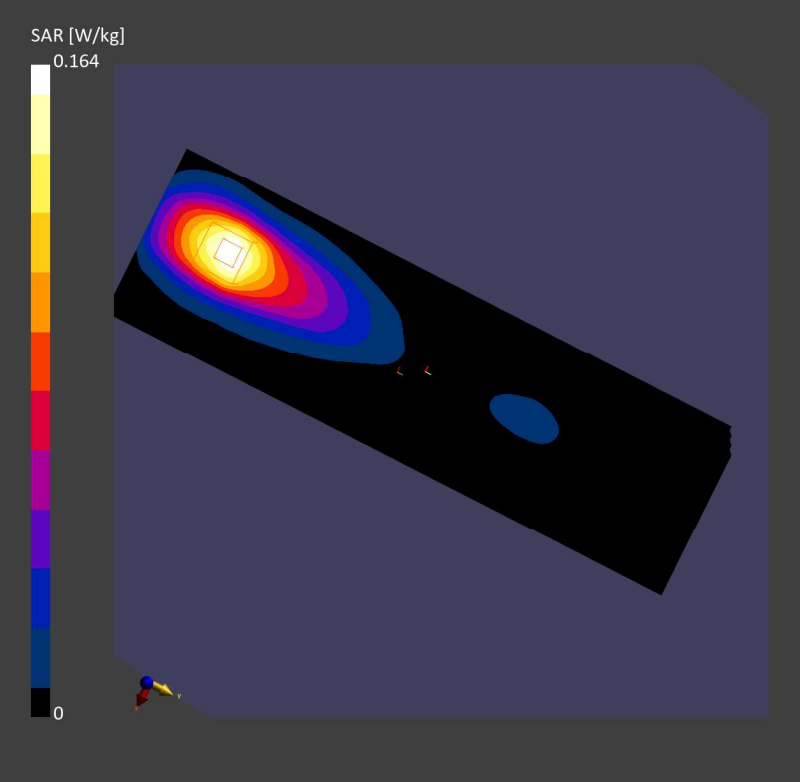
Phantom	TSL, Measured Date	Probe, Calibration Date	DAE, Calibration Date
ELI V8.0 (20deg probe tilt) – 2237	HBBL-600-10000 Charge:xxxx, 2025-Mar-24	EX3DV4 – SN7871, 2024-04-24	DAE4ip Sn1859, 2024-03-26

Scans Setup

	Area Scan	Zoom Scan
Grid Extents [mm]	90.0 x 300.0	30.0 x 30.0 x 30.0
Grid Steps [mm]	15.0 x 15.0	5.4 x 5.4 x 1.5
Sensor Surface [mm]	3.0	1.4
Graded Grid	N/A	Yes
Grading Ratio	N/A	1.5
MAIA	N/A	N/A
Surface Detection	All points	All points
Scan Method	Measured	Measured

Measurement Results

	Area Scan	Zoom Scan
Date	2025-03-24, 14:51	2025-03-24, 15:05
psSAR1g [W/Kg]	0.133	0.164
psSAR10g [W/Kg]	0.085	0.085
Power Drift [dB]	-0.03	-0.01
Power Scaling	Disabled	Disabled
Scaling Factor [dB]		
TSL Correction	No correction	No correction
M2/M1 [%]		62.8
Dist 3dB Peak [mm]		6.9



Plot 7

Measurement Report for Microphone, FRONT, Custom Band, CW, Channel 954000 (954.000 MHz)

Device Under Test Properties

Model, Manufacturer	Dimensions [mm]	IMEI	DUT Type
Microphone, Wisycom	270.0 x 50.0 x 48.0		Phone

Exposure Conditions

Phantom Section, TSL	Position, Test Distance [mm]	Band	Group, UID	Frequency [MHz], Channel Number	Conversion Factor	TSL Conductivity [S/m]	TSL Permittivity
Flat, HSL	FRONT, 0.00	Custom Band	CW, 0--	954.000, 954000	8.66	0.952	42.9

Hardware Setup

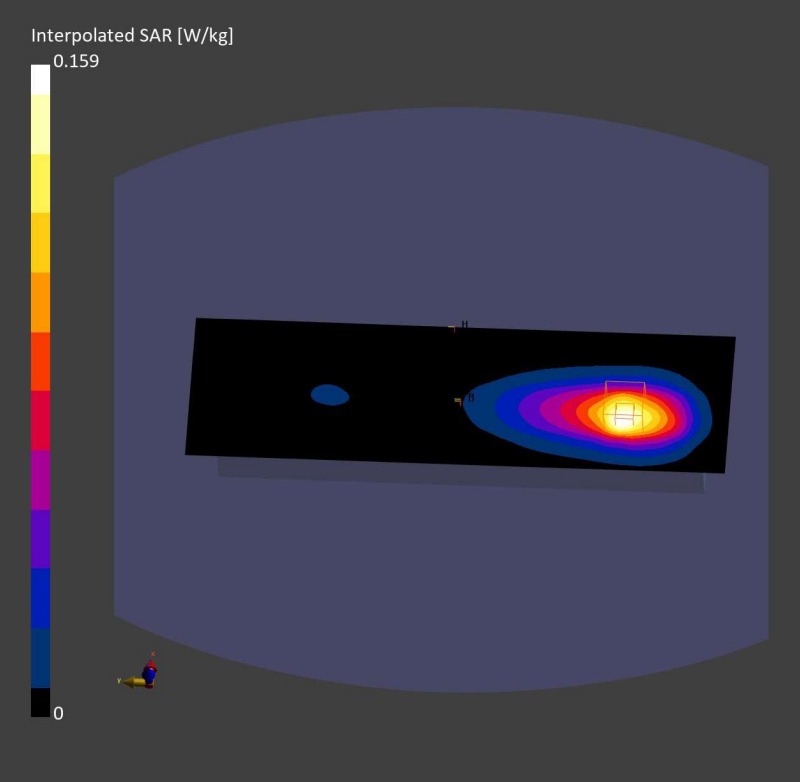
Phantom	TSL, Measured Date	Probe, Calibration Date	DAE, Calibration Date
ELI V8.0 (20deg probe tilt) – 2237	HBBL-600-10000 Charge:xxxx, 2025-Mar-24	EX3DV4 – SN7871, 2024-04-24	DAE4ip Sn1859, 2024-03-26

Scans Setup

	Area Scan	Zoom Scan
Grid Extents [mm]	90.0 x 300.0	30.0 x 30.0 x 30.0
Grid Steps [mm]	15.0 x 15.0	5.5 x 5.5 x 1.5
Sensor Surface [mm]	3.0	1.4
Graded Grid	N/A	Yes
Grading Ratio	N/A	1.5
MAIA	N/A	N/A
Surface Detection	All points	All points
Scan Method	Measured	Measured

Measurement Results

	Area Scan	Zoom Scan
Date	2025-03-25, 08:38	2025-03-25, 08:53
psSAR1g [W/Kg]	0.135	0.163
psSAR10g [W/Kg]	0.084	0.084
Power Drift [dB]	0.07	-0.01
Power Scaling	Disabled	Disabled
Scaling Factor [dB]		
TSL Correction	No correction	No correction
M2/M1 [%]		58.4
Dist 3dB Peak [mm]		6.3



Plot 8

Measurement Report for Microphone, FRONT, Custom Band, CW, Channel 959900 (959.900 MHz)

Device Under Test Properties

Model, Manufacturer	Dimensions [mm]	IMEI	DUT Type
Microphone, Wisycom	270.0 x 50.0 x 48.0		Phone

Exposure Conditions

Phantom Section, TSL	Position, Test Distance [mm]	Band	Group, UID	Frequency [MHz], Channel Number	Conversion Factor	TSL Conductivity [S/m]	TSL Permittivity
Flat, HSL	FRONT, 0.00	Custom Band	CW, 0--	959.900, 959900	8.66	0.954	42.9

Hardware Setup

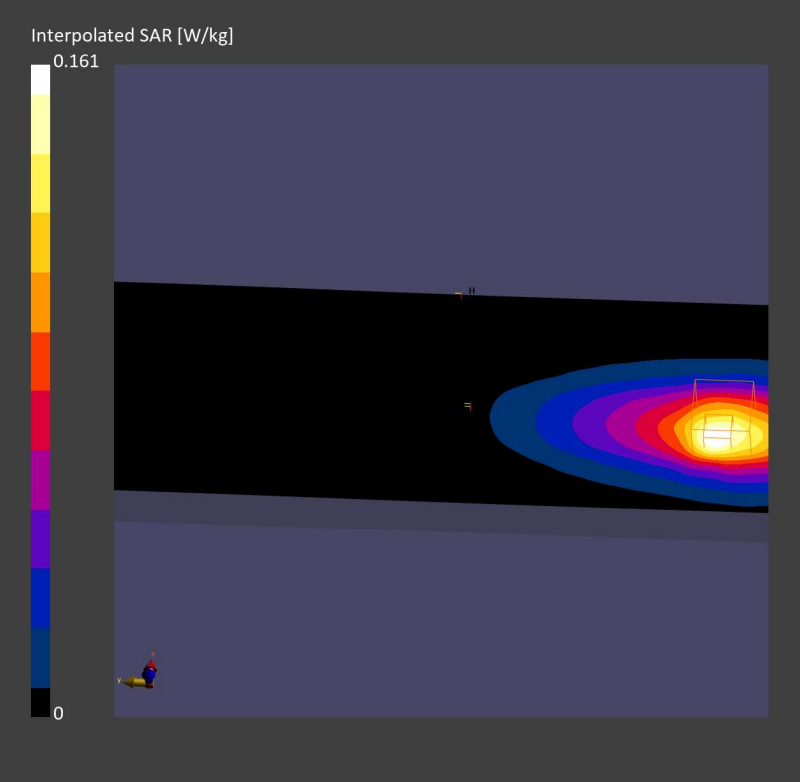
Phantom	TSL, Measured Date	Probe, Calibration Date	DAE, Calibration Date
ELI V8.0 (20deg probe tilt) - 2237	HBBL-600-10000 Charge:xxxx, 2025-Mar-24	EX3DV4 - SN7871, 2024-04-24	DAE4ip Sn1859, 2024-03-26

Scans Setup

	Area Scan	Zoom Scan
Grid Extents [mm]	90.0 x 300.0	30.0 x 30.0 x 30.0
Grid Steps [mm]	15.0 x 15.0	5.9 x 5.9 x 1.5
Sensor Surface [mm]	3.0	1.4
Graded Grid	N/A	Yes
Grading Ratio	N/A	1.5
MAIA	N/A	N/A
Surface Detection	All points	All points
Scan Method	Measured	Measured

Measurement Results

	Area Scan	Zoom Scan
Date	2025-03-25, 13:09	2025-03-25, 13:22
psSAR1g [W/Kg]	0.134	0.156
psSAR10g [W/Kg]	0.082	0.081
Power Drift [dB]	-0.02	-0.02
Power Scaling	Disabled	Disabled
Scaling Factor [dB]		
TSL Correction	No correction	No correction
M2/M1 [%]		62.7
Dist 3dB Peak [mm]		6.1



Plot 9

Measurement Report for Microphone, BACK, D450, CW, Channel 70 (470.000 MHz)

Device Under Test Properties

Model, Manufacturer	Dimensions [mm]	IMEI	DUT Type
Microphone, Wisycom	270.0 x 50.0 x 48.0		Phone

Exposure Conditions

Phantom Section, TSL	Position, Test Distance [mm]	Band	Group, UID	Frequency [MHz], Channel Number	Conversion Factor	TSL Conductivity [S/m]	TSL Permittivity
Flat, HSL	BACK, 0.00	D450	CW, 0--	470.000, 70	10.72	0.868	44.4

Hardware Setup

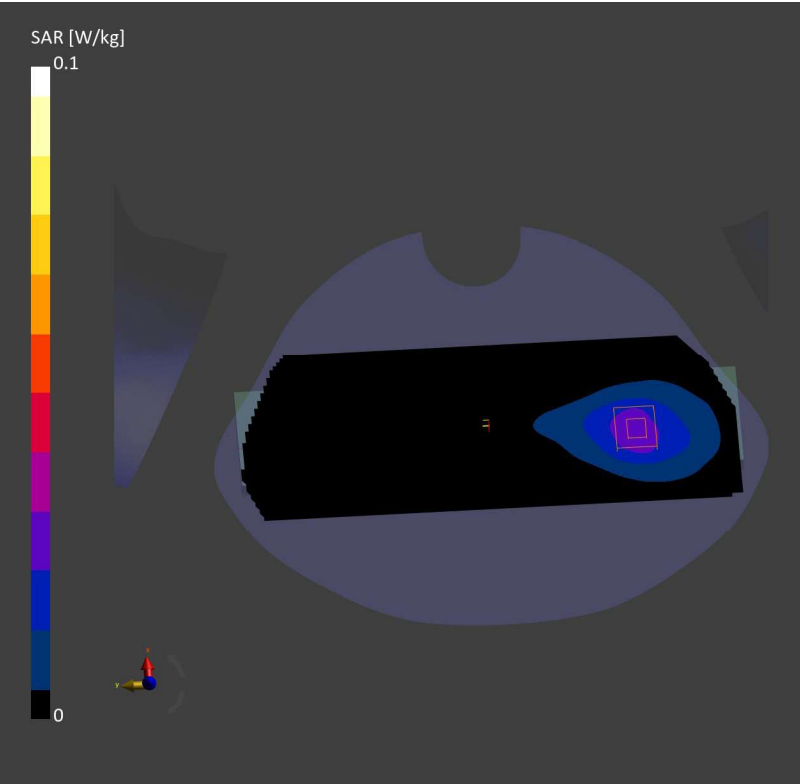
Phantom	TSL, Measured Date	Probe, Calibration Date	DAE, Calibration Date
Twin-SAM V8.0 (30deg probe tilt) – 2186	HSL450 Charge: xxxx, 2025-Mar-20	EX3DV4 – SN7871, 2024-04-24	DAE4ip Sn1859, 2024-03-26

Scans Setup

	Area Scan	Zoom Scan
Grid Extents [mm]	90.0 x 300.0	30.0 x 30.0 x 30.0
Grid Steps [mm]	15.0 x 15.0	5.5 x 5.5 x 1.5
Sensor Surface [mm]	3.0	1.4
Graded Grid	N/A	Yes
Grading Ratio	N/A	1.5
MAIA	Y	N/A
Surface Detection	VMS + 6p	VMS + 6p
Scan Method	Measured	Measured

Measurement Results

	Area Scan	Zoom Scan
Date	2025-03-21, 16:33	2025-03-21, 16:41
psSAR1g [W/Kg]	0.030	0.042
psSAR10g [W/Kg]	0.020	0.019
Power Drift [dB]	-0.05	0.00
Power Scaling	Disabled	Disabled
Scaling Factor [dB]		
TSL Correction	No correction	No correction
M2/M1 [%]		53.0
Dist 3dB Peak [mm]		5.5



Plot 10

Measurement Report for Microphone, BACK, D450, CW, Channel 93 (493.000 MHz)

Device Under Test Properties

Model, Manufacturer	Dimensions [mm]	IMEI	DUT Type
Microphone, Wisycom	270.0 x 50.0 x 48.0		Phone

Exposure Conditions

Phantom Section, TSL	Position, Test Distance [mm]	Band	Group, UID	Frequency [MHz], Channel Number	Conversion Factor	TSL Conductivity [S/m]	TSL Permittivity
Flat, HSL	BACK, 0.00	D450	CW, 0--	493.000, 93	10.72	0.887	44.0

Hardware Setup

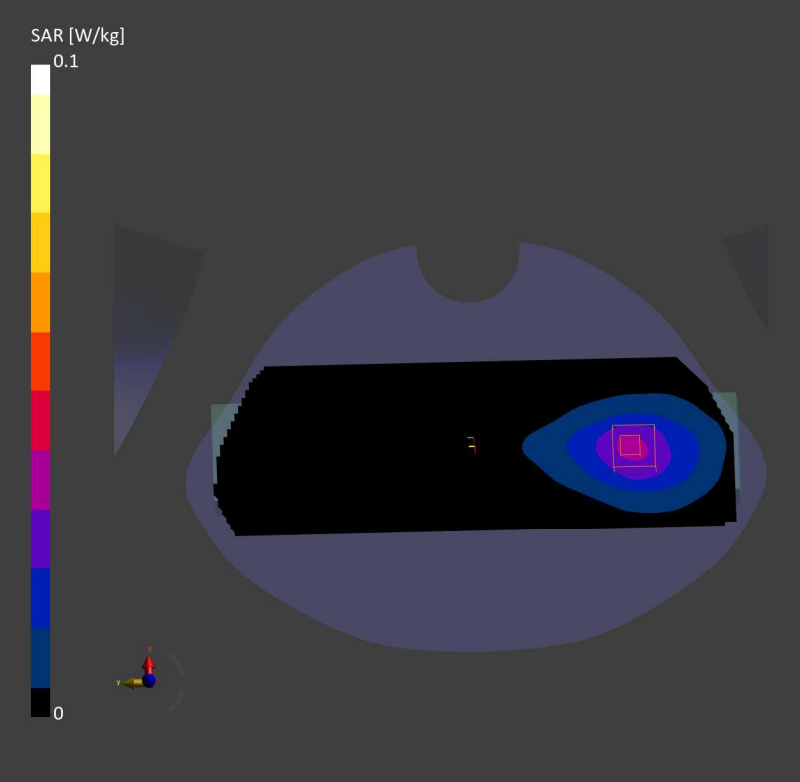
Phantom	TSL, Measured Date	Probe, Calibration Date	DAE, Calibration Date
Twin-SAM V8.0 (30deg probe tilt) – 2186	HSL450 Charge: xxxx, 2025-Mar-20	EX3DV4 – SN7871, 2024-04-24	DAE4ip Sn1859, 2024-03-26

Scans Setup

	Area Scan	Zoom Scan
Grid Extents [mm]	90.0 x 300.0	30.0 x 30.0 x 30.0
Grid Steps [mm]	15.0 x 15.0	6.0 x 6.0 x 1.5
Sensor Surface [mm]	3.0	1.4
Graded Grid	N/A	Yes
Grading Ratio	N/A	1.5
MAIA	Y	Y
Surface Detection	VMS + 6p	VMS + 6p
Scan Method	Measured	Measured

Measurement Results

	Area Scan	Zoom Scan
Date	2025-03-21, 16:17	2025-03-21, 16:24
psSAR1g [W/Kg]	0.033	0.040
psSAR10g [W/Kg]	0.022	0.021
Power Drift [dB]	-0.13	0.02
Power Scaling	Disabled	Disabled
Scaling Factor [dB]		
TSL Correction	No correction	No correction
M2/M1 [%]		70.3
Dist 3dB Peak [mm]		8.8



Plot 11

Measurement Report for Microphone, BACK, D450, CW, Channel 100 (500.000 MHz)

Device Under Test Properties

Model, Manufacturer	Dimensions [mm]	IMEI	DUT Type
Microphone, Wisycom	270.0 x 50.0 x 48.0		Phone

Exposure Conditions

Phantom Section, TSL	Position, Test Distance [mm]	Band	Group, UID	Frequency [MHz], Channel Number	Conversion Factor	TSL Conductivity [S/m]	TSL Permittivity
Flat, HSL	BACK, 0.00	D450	CW, 0--	500.000, 100	10.72	0.893	43.9

Hardware Setup

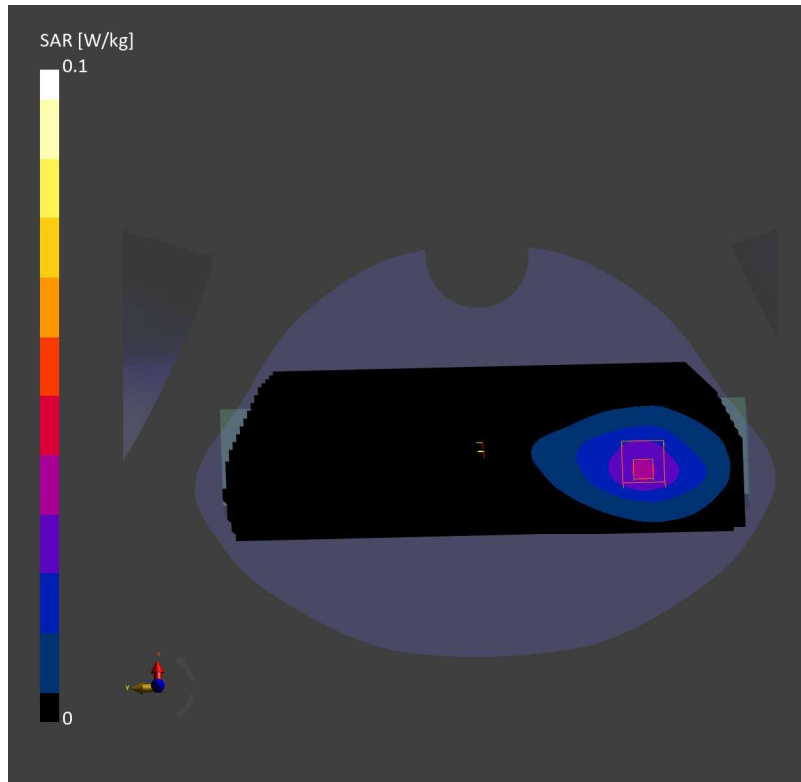
Phantom	TSL, Measured Date	Probe, Calibration Date	DAE, Calibration Date
Twin-SAM V8.0 (30deg probe tilt) – 2186	HSL450 Charge: xxxx, 2025-Mar-20	EX3DV4 – SN7871, 2024-04-24	DAE4ip Sn1859, 2024-03-26

Scans Setup

	Area Scan	Zoom Scan
Grid Extents [mm]	90.0 x 300.0	30.0 x 30.0 x 30.0
Grid Steps [mm]	15.0 x 15.0	6.0 x 6.0 x 1.5
Sensor Surface [mm]	3.0	1.4
Graded Grid	N/A	Yes
Grading Ratio	N/A	1.5
MAIA	Y	Y
Surface Detection	VMS + 6p	VMS + 6p
Scan Method	Measured	Measured

Measurement Results

	Area Scan	Zoom Scan
Date	2025-03-21, 16:02	2025-03-21, 16:08
psSAR1g [W/Kg]	0.032	0.039
psSAR10g [W/Kg]	0.021	0.021
Power Drift [dB]	-0.04	0.01
Power Scaling	Disabled	Disabled
Scaling Factor [dB]		
TSL Correction	No correction	No correction
M2/M1 [%]		69.4
Dist 3dB Peak [mm]		8.4



Plot 12

Measurement Report for Microphone, BACK, D900, CW, Channel 91 (941.000 MHz)

Device Under Test Properties

Model, Manufacturer	Dimensions [mm]	IMEI	DUT Type
Microphone, Wisycom	270.0 x 50.0 x 48.0		Phone

Exposure Conditions

Phantom Section, TSL	Position, Test Distance [mm]	Band	Group, UID	Frequency [MHz], Channel Number	Conversion Factor	TSL Conductivity [S/m]	TSL Permittivity
Flat, HSL	BACK, 0.00	D900	CW, 0--	941.000, 91	8.66	0.948	42.9

Hardware Setup

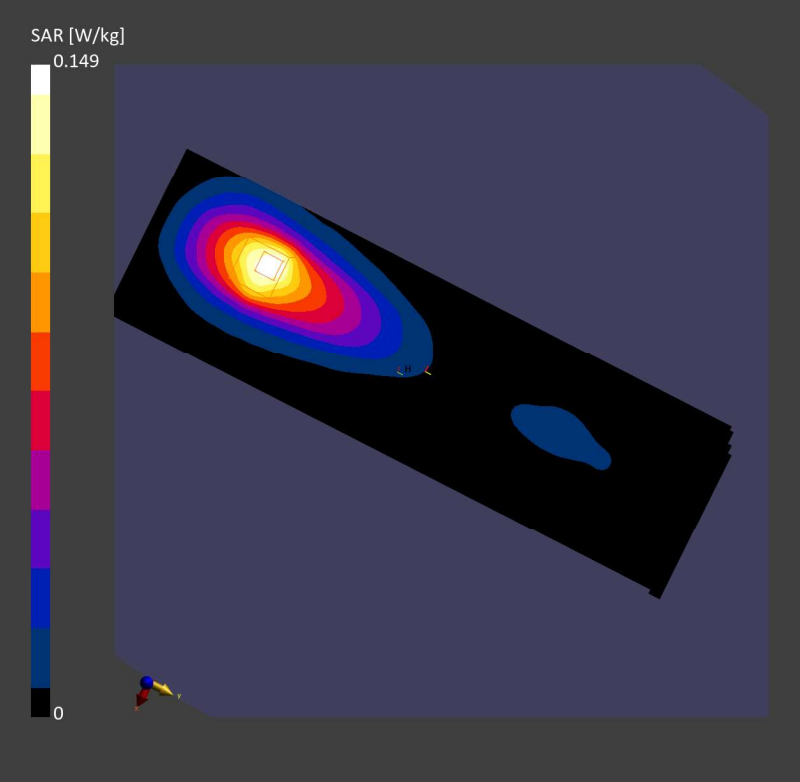
Phantom	TSL, Measured Date	Probe, Calibration Date	DAE, Calibration Date
ELI V8.0 (20deg probe tilt) – 2237	HBBL-600-10000 Charge:xxxx, 2025-Mar-24	EX3DV4 – SN7871, 2024-04-24	DAE4ip Sn1859, 2024-03-26

Scans Setup

	Area Scan	Zoom Scan
Grid Extents [mm]	90.0 x 300.0	30.0 x 30.0 x 30.0
Grid Steps [mm]	15.0 x 15.0	5.5 x 5.5 x 1.5
Sensor Surface [mm]	3.0	1.4
Graded Grid	N/A	Yes
Grading Ratio	N/A	1.5
MAIA	N/A	N/A
Surface Detection	All points	All points
Scan Method	Measured	Measured

Measurement Results

	Area Scan	Zoom Scan
Date	2025-03-24, 15:30	2025-03-24, 15:44
psSAR1g [W/Kg]	0.110	0.143
psSAR10g [W/Kg]	0.069	0.071
Power Drift [dB]	-0.36	-0.04
Power Scaling	Disabled	Disabled
Scaling Factor [dB]		
TSL Correction	No correction	No correction
M2/M1 [%]		61.2
Dist 3dB Peak [mm]		7.0



Plot 13

Measurement Report for Microphone, BACK, Custom Band, CW, Channel 954000 (954.000 MHz)

Device Under Test Properties

Model, Manufacturer	Dimensions [mm]	IMEI	DUT Type
Microphone, Wisycom	270.0 x 50.0 x 48.0		Phone

Exposure Conditions

Phantom Section, TSL	Position, Test Distance [mm]	Band	Group, UID	Frequency [MHz], Channel Number	Conversion Factor	TSL Conductivity [S/m]	TSL Permittivity
Flat, HSL	BACK, 0.00	Custom Band	CW, 0--	954.000, 954000	8.66	0.952	42.9

Hardware Setup

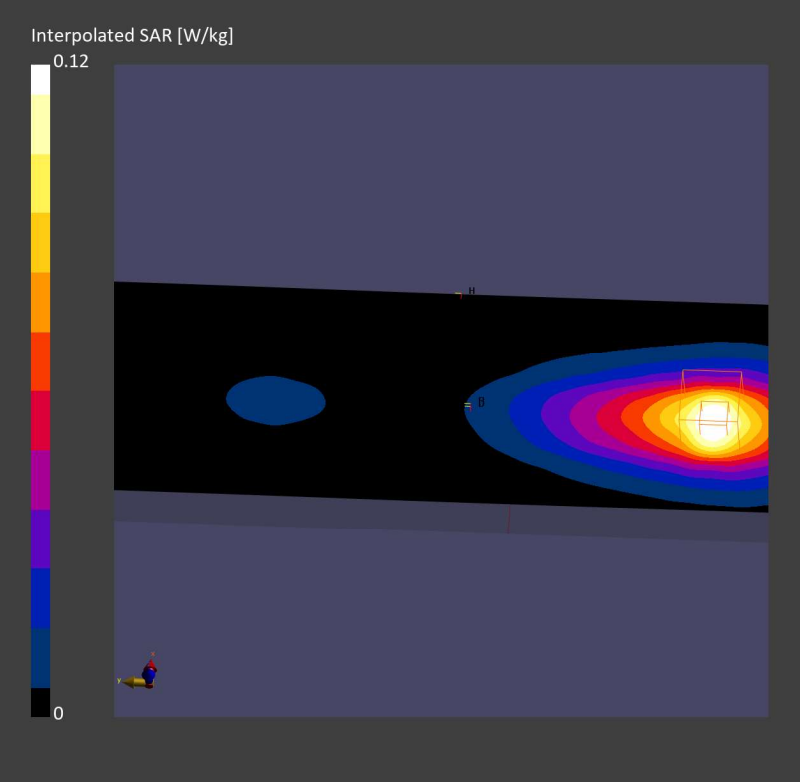
Phantom	TSL, Measured Date	Probe, Calibration Date	DAE, Calibration Date
ELI V8.0 (20deg probe tilt) - 2237	HBBL-600-10000 Charge:xxxx, 2025-Mar-24	EX3DV4 - SN7871, 2024-04-24	DAE4ip Sn1859, 2024-03-26

Scans Setup

	Area Scan	Zoom Scan
Grid Extents [mm]	90.0 x 300.0	30.0 x 30.0 x 30.0
Grid Steps [mm]	15.0 x 15.0	5.6 x 5.6 x 1.5
Sensor Surface [mm]	3.0	1.4
Graded Grid	N/A	Yes
Grading Ratio	N/A	1.5
MAIA	Y	N/A
Surface Detection	All points	All points
Scan Method	Measured	Measured

Measurement Results

	Area Scan	Zoom Scan
Date	2025-03-25, 09:14	2025-03-25, 09:27
psSAR1g [W/Kg]	0.105	0.134
psSAR10g [W/Kg]	0.067	0.068
Power Drift [dB]	-0.07	0.01
Power Scaling	Disabled	Disabled
Scaling Factor [dB]		
TSL Correction	No correction	No correction
M2/M1 [%]		66.2
Dist 3dB Peak [mm]		7.6



Plot 14

Measurement Report for Microphone, BACK, Custom Band, CW, Channel 959900 (959.900 MHz)

Device Under Test Properties

Model, Manufacturer	Dimensions [mm]	IMEI	DUT Type
Microphone, Wisycom	270.0 x 50.0 x 48.0		Phone

Exposure Conditions

Phantom Section, TSL	Position, Test Distance [mm]	Band	Group, UID	Frequency [MHz], Channel Number	Conversion Factor	TSL Conductivity [S/m]	TSL Permittivity
Flat, HSL	BACK, 0.00	Custom Band	CW, 0--	959.900, 959900	8.66	0.954	42.9

Hardware Setup

Phantom	TSL, Measured Date	Probe, Calibration Date	DAE, Calibration Date
ELI V8.0 (20deg probe tilt) - 2237	HBBL-600-10000 Charge:xxxx, 2025-Mar-24	EX3DV4 - SN7871, 2024-04-24	DAE4ip Sn1859, 2024-03-26

Scans Setup

	Area Scan	Zoom Scan
Grid Extents [mm]	90.0 x 300.0	30.0 x 30.0 x 30.0
Grid Steps [mm]	15.0 x 15.0	6.0 x 6.0 x 1.5
Sensor Surface [mm]	3.0	1.4
Graded Grid	N/A	Yes
Grading Ratio	N/A	1.5
MAIA	N/A	N/A
Surface Detection	VMS + 6p	VMS + 6p
Scan Method	Measured	Measured

Measurement Results

	Area Scan	Zoom Scan
Date	2025-03-25, 13:28	2025-03-25, 13:34
psSAR1g [W/Kg]	0.113	0.134
psSAR10g [W/Kg]	0.069	0.068
Power Drift [dB]	-0.02	-0.00
Power Scaling	Disabled	Disabled
Scaling Factor [dB]		
TSL Correction	No correction	No correction
M2/M1 [%]		69.2
Dist 3dB Peak [mm]		7.6

