

## Nemko Korea CO., Ltd.

300-2, Osan-Ri, Mohyun-Myun, Yongin-City, Kyungki-Do, KOREA

TEL:+82 31 322 2333

FAX:+82 31 322 2332

### FCC EVALUATION REPORT FOR CERTIFICATION

**Applicant :**

Amac Tek Co., Ltd.

3rd Floor, Seyo Bldg, 161-8, Samsung-1Dong,

Kangnam-Gu, Seoul, 135-881 Korea

Attn : Mr. K. H. Na

Dates of Issue : April 14, 2004

Test Report No. : NK2EE224

Test Site : Nemko Korea Co., Ltd.

EMC site, Korea

**MODEL****PLXHAN-250X****Brand Name**

AMAC

**CONTACT PERSON**

Amac Tek Co., Ltd.

3rd Floor, Seyo Bldg, 161-8, Samsung-1Dong, Kangnam-Gu,

Seoul, 135-881, Korea

Mr. K. H. Na

Telephone No. : +82 2 539 6958

Applied Standard:

Part 15 &amp; 2

Classification :

FCC Class B Device

EUT Type:

MP3 Player

The device bearing the brand name and FCC ID specified above has been shown to comply with the applicable technical standards as indicated in the measurement report and was tested in accordance with the measurement procedures specified in ANSI C63.4-1992.

I attest to the accuracy of data and all measurements reported herein were performed by me or were made under my supervision and are correct to the best of my knowledge and belief. I assume full responsibility for the completeness of these measurements and vouch for the qualifications of all persons taking them.



Tested By : Y. S. Park  
Senior Engineer



Reviewed By : H.H. Kim  
Manager & Chief Engineer

## ***TABLE OF CONTENTS***

---

|  |           |
|--|-----------|
| <b>SCOPE</b>   | <b>3</b>  |
| <b>INTRODUCTION (Site Description)</b>                 | <b>4</b>  |
| <b>TEST CONDITIONS &amp; EUT INFORMATION</b>           | <b>5</b>  |
| <b>SUMMARY OF TEST RESULTS</b>                         | <b>6</b>  |
| <b>RECOMMANDATION / CONCLUSION</b>                     | <b>6</b>  |
| <b>SAMPLE CALCULATION</b>                              | <b>6</b>  |
| <b>DESCRIPTION OF TESTS (Conducted Emissions)</b>      | <b>7</b>  |
| <b>DESCRIPTION OF TESTS (Radiated Emissions)</b>       | <b>8</b>  |
| <b>TEST DATA (Conducted Emissions)</b>                 | <b>9</b>  |
| <b>TEST DATA (Radiated Emissions)</b>                  | <b>10</b> |
| <b>PLOT OF EMISSIONS (Conducted Emissions Diagram)</b> | <b>13</b> |
| <b>ACCURACY OF MEASUREMENT</b>                         | <b>15</b> |
| <b>TEST EQUIPMENT</b>                                  | <b>16</b> |
| <b>APPENDIX A – SAMPLE LABEL</b>                       | <b>17</b> |
| <b>APPENDIX B – PHOTOGRAPHS OF TEST SET-UP</b>         | <b>18</b> |
| <b>APPENDIX C – EUT PHOTOGRAPHS</b>                    | <b>20</b> |
| <b>APPENDIX D – CIRCUIT DIAGRAM</b>                    | <b>27</b> |
| <b>APPENDIX E – USER’S MANUAL</b>                      | <b>28</b> |
| <b>APPENDIX F – SCHEMATIC DIAGRAMS</b>                 | <b>29</b> |

## SCOPE

Measurement and determination of electromagnetic emissions (EME) of radio frequency devices including intentional and/or unintentional radiators for compliance with the technical rules and regulations of the Federal Communications Commission under FCC part 15.

**Responsible Party :** Amac Tek Co., Ltd.

**Contact Person :** Mr. K. H. Na

**Manufacturer :** Amac Tek Co., Ltd.  
3rd Floor, Seyo Bldg, 161-8, Samsung-1Dong,  
Kangnam-Gu, Seoul, 135-881, Korea  
Tel No.: +82 2 539 6958

**Factory :** Amac Tek Co., Ltd.  
3rd Floor, Seyo Bldg, 161-8, Samsung-1Dong,  
Kangnam-Gu, Seoul, 135-881, Korea  
Tel No.: +82 2 539 6958

- FCC ID: PLXHAN-250X
- Brand Name: Amac, Hansori
- EUT Type: MP3 Player
- Voltage: DC 1.5V (size AAA battery)
- Port/Connector: USB, Earphone, Line In

- Classification: FCC Class B
- Rule Part(s): FCC Part 15 & Part 2
- Test Procedure(s): ANSI C63.4 (1992)
- Dates of Test: March 30, 2004 to April 01, 2004
- Place of Tests: Nemko Korea Co., Ltd. EMC Site
- Test Report No.: NK2EE224

## INTRODUCTION

The measurement procedure described in American National Standard for Methods of Measurement of Radio-Noise Emissions from Low-Voltage Electrical and Electronic Equipment in the Range of 9kHz to 40GHz (ANSI C63.4-1992) was used in determining radiated and conducted emissions emanating from **Amac Tek Co., Ltd.**

MODEL : **PLXHAN-250X, MP3 Player.**

These measurement tests were conducted at **Nemko Korea Co., Ltd. EMC Laboratory**.

The site address is 300-2, Osan-Ri, Mohyun-Myun, Yongin-City, Kyungki-Do, KOREA

The area of Nemko Korea Corporation Ltd. EMC Test Site is located in a mountain area at 80 kilometers (48 miles) southeast and Incheon International Airport (Incheon Airport), 30 kilometers (18miles) south-southeast from central Seoul.

It is located in the valley surrounded by mountains in all directions where ambient radio signal conditions are quiet and a favorable area to measure the radio frequency interference on open field test site for the computing and ISM devices manufactures.

The detailed description of the measurement facility was found to be in compliance with the requirements of § 2.948 according to ANSI C63.4 on October 19, 1992.



Nemko Korea Co., Ltd.  
EMC Lab.  
300-2, Osan-Ri, Mohyun-Myun, Yongin-City Kyungki-Do, KOREA 449-852  
Tel)+82-31-322-2333  
Fax)+82-31-322-2332

Fig. 1. The map above shows the Seoul in Korea vicinity area.  
The map also shows Nemko Korea Corporation Ltd. EMC Lab. and Incheon Airport.

## TEST CONDITIONS & EUT INFORMATION

### Operating During Test

The MP3 player connected with PC was operated at download mode and play mode for the testing.

### Support Equipment

|               |   |                 |
|---------------|---|-----------------|
| Notebook PC   | Dell Asia Pacific Sdn.,<br>Model:PPT (Latitude D400)  | S/N: N/A        |
| AC/DC Adaptor | Dongguang Lite Power 2nd Plant<br>Model : PA-1900-02<br>1.8m unshield AC power cord<br>2.0m Shielded DC Cable | S/N: N/A        |
| PS/2 Mouse    | N/A, Model : JMP2000WX<br>1.8m Unshielded Din cable   | S/N: N/A        |
| Serial Mouse  | IO TEC, Model : Laser Mouse<br>1.5m Unshielded D-sub cable  | S/N : N/A       |
| Keyboard      | DELL, Model : SK-8110<br>1.5m Unshielded Din cable  | S/N: N/A        |
| Printer       | H.P., Model: C5870A<br>1.8m shielded D-sub cable  | S/N: SG88R131GW |
| AC/DC Adaptor | YOKOGAWA, Model: C4557-60104<br>1.8m unshielded AC power cable<br>1.2m unshielded DC power cable              | S/N: N/A        |
| Earphone      | 1.0m unshielded, phone Jack   | S/N: N/A        |

### EUT Information

|                  |   |
|------------------|---|
| Clock:           | 32.76kHz, 25MHz, 8MHz                                     |
| Chipset(s):      | J1(JMK68), J10(CON10A), U10(SM8142BD)                     |
| Port(s):         | Earphone, USB, Line In                                    |
| Download Speed : | 8 Mbps  |
| Memory :         | 128 / 256 / 512MB   |
| Interface Port : | USB 1.1   |
| FM :             | 87.5 ~ 108.0MHz (USA, KOREA, CHINA)<br>76 ~ 90MHz (JAPAN) |

## SUMMARY OF TEST RESULTS

The EUT has been tested according to the following specification:

| Name of Test       | Paragraph No. | Result   | Remark |
|--------------------|---------------|----------|--------|
| Conducted Emission | 15.107        | Complies |        |
| Radiated Emission  | 15.109        | Complies |        |

## RECOMMENDATION/CONCLUSION

The data collected shows that the **Amac Tek Co., Ltd.**

FCC ID : **PLXHAN-250X, MP3 Player.** complies with § 15.107 and 15.109 of the FCC Rules.

The highest emission observed was at **0.29 MHz** for conducted emissions with a margin of **6.65 dB**, at **264.04 MHz** for radiated emissions with a margin of **6.72 dB**.

## SAMPLE CALCULATION

$$\text{dB } \mu\text{V} = 20 \log_{10} (\mu\text{V}/\text{m})$$

$$\mu\text{V} = 10^{(\text{dB } \mu\text{V}/20)}$$

### EX. 1.

@57.7 MHz

Class B limit = 100  $\mu\text{V}/\text{m}$  = 40.0 dB  $\mu\text{V}/\text{m}$

Reading = 19.1 dB  $\mu\text{V}$  (calibrated level)

Antenna factor + Cable Loss + Amplifier Gain = 10.12 dB

Total = 29.22 dB  $\mu\text{V}/\text{m}$

Margin = 40.0 – 29.22 = 10.78

10.78 dB below the limit

## DESCRIPTION OF TESTS

### Conducted Emissions

The Line conducted emission test facility is located inside a 4 X 7 X 2.5 meter shielded enclosure.

It is manufactured by EM engineering. The shielding effectiveness of the shielded room is in accordance with MIL-STD-285 or NSA 65-6.

A 1m X 1.5m wooden table 0.8m height is placed 0.4m away from the vertical wall and 1.5m away from the side of wall of the shielded room

Rohde & Schwarz (ESH3-Z5) and Kyoritsu (KNW-408) of the 50ohm/50uH Line Impedance Stabilization Network(LISN) are bonded to the shielded room.

The EUT is powered from the Rohde & Schwarz LISN and the support equipment is powered from the Kyoritsu LISN. Power to the LISN s are filtered by high-current high insertion loss Power line filters. The purpose of filter is to attenuate ambient signal interference and this filter is also bonded to shielded enclosure. All electrical cables are shielded by tinned copper zipper tubing with inner diameter of 1/2".

If DC power device, power will be derived from the source power supply it normally will be powered from and this supply lines will be connected to the LISNs,

All interconnecting cables more than 1 meter were shortened by non inductive bundling (serpentine fashion) to a 1 meter length.

Sufficient time for EUT, support equipment, and test equipment was allowed in order for them to warm up to their normal operating condition. The RF output of the LISN was connected to the spectrum analyzer to determine the frequency producing the maximum EME from the EUT. The spectrum was scanned from 150kHz to 30MHz with 20msec sweep time.

The frequency producing the maximum level was re-examined using the EMI test receiver. (Rohde & Schwarz ESCS30).

The detector function were set to CISPR quasi-peak mode & average mode.

The bandwidth of receiver was set to 9KHz. The EUT, support equipment, and interconnecting cables were arranged and manipulated to maximize each EME emission.

Each emission was maximized by; switching power lines; varying the mode of operation or resolution; clock or data exchange speed; scrolling H pattern to the EUT and of support equipment, and powering the monitor from the floor mounted outlet box and computer aux AC outlet, if applicable; which ever determined the worst case emission.

Each EME reported was calibrated using the R&S signal generator.

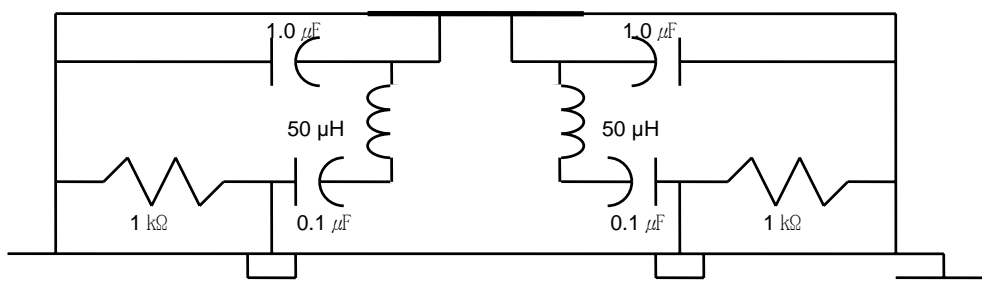


Fig. 2. LISN Schematic Diagram



## DESCRIPTION OF TESTS

### Radiated Emissions

Preliminary measurement were made indoors at 3 meter using broad band antennas, broadband amplifier, and spectrum analyzer to determine the frequency producing the maximum EME. Appropriate precaution was taken to ensure that all EME from the EUT were maximized and investigated. The Technology configuration, clock speed, mode of operation or video resolution, turntable azimuth with respect to the antenna was note for each frequency found.

The spectrum was scanned from 30 to 1000MHz using Biconical log Antenna(ARA, LPB-2520/A). Above 1GHz, Doppels Teg Horn antenna (EMCO, DAA-37121:upto 1~18GHz) was used.

Final Measurements were made outdoors at 3 or 10m test range using Logbicon Super Antenna(Schwarzbeck, VULB9166) or Doppels Teg Horn antenna.(EMCO, DAA-37121) The test equipment was placed on a wooden table.

Sufficient time for the EUT, support equipment, and test equipment was allowed in order for them to warm up to their normal operating condition.

Each frequency found during pre-scan measurements was reexamined and investigated using EMI test receiver.(ESCS30)

The detector function was set to CISPR peak mode or quasi-peak mode or Average mode and the bandwidth of the receiver was set to 120KHz or 1MHz depending on the frequency or type of signal.

The half wave dipole antenna was tuned to the frequency found during preliminary radiated measurements.

The EUT support equipment and interconnecting cables were re configured to the setup producing the maximum emission for the frequency and were placed on top of a 0.8m high non- metallic 1.0X 1.5 meter table.

The EUT, support equipment and interconnecting cables were re-arranged and manipulated to maximize each EME emission.

The turn table containing the Technology was rotated; the antenna height was varied 1 to 4meter and stopped at the azimuth or height producing the maximum emission Each emission was maximized by : switching power lines; varying the mode of operation or resolution; clock or data exchange speed; scrolling H pattern to the EUT and of support equipment, and powering the monitor from the floor mounted outlet box and computer aux AC outlet, if applicable; which ever determined the worst case emission.

Each EME reported was calibrated using the R/S signal generator.

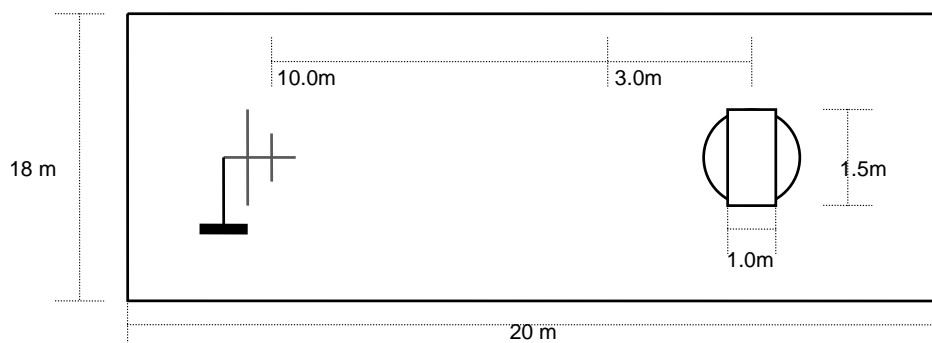


Fig. 3. Dimensions of Outdoor Test Site



## TEST DATA

### Conducted Emissions

FCC ID : PLXHAN-250X

Test Mode : download mode

| Frequency<br>(MHz) | Level(dB $\mu$ V) |         | Line | Limit(dB $\mu$ V) |         | Margin(dB) |         |
|--------------------|-------------------|---------|------|-------------------|---------|------------|---------|
|                    | Q-Peak            | Average |      | Q-Peak            | Average | Q-Peak     | Average |
| 0.15               | 53.07             | 40.50   | N    | 66.00             | 56.00   | 12.93      | 15.50   |
| 0.29               | 48.73             | 43.87   | L    | 60.52             | 50.52   | 11.79      | 6.65    |
| 0.35               | 41.90             | 38.34   | L    | 58.96             | 48.96   | 17.06      | 10.62   |
| 0.44               | 39.77             | 33.02   | N    | 57.06             | 47.06   | 17.29      | 14.04   |
| 0.62               | 36.40             | 28.80   | N    | 56.00             | 46.00   | 19.60      | 17.20   |
| 0.80               | 34.81             | 25.52   | N    | 56.00             | 46.00   | 21.19      | 20.48   |

**Table 1. Line Conducted Emissions Tabulated Data**

#### NOTES:

- Measurements using CISPR quasi-peak mode & average mode.
- All modes of operation were investigated and the worst -case emission are reported. See attached Plots.
- The limit for Class B device is on the FCC Part section 15.107(a).
- Line L = Line Line N = Neutral

*Tested by Y. S. Park*

Tested by Y. S. Park

## TEST DATA

### Radiated Emissions

FCC ID : PLXHAN-250X

Test Mode : download mode

| Frequency<br>(MHz) | Reading<br>(dB $\mu$ V) | Pol*<br>(H/V) | AF+CL+Amp<br>(dB)** | Result<br>(dB $\mu$ V/m) | Limit<br>(dB $\mu$ V/m) | Margin<br>(dB) |
|--------------------|-------------------------|---------------|---------------------|--------------------------|-------------------------|----------------|
| 205.38             | 53.43                   | H             | -21.13              | 32.30                    | 43.52                   | 11.22          |
| 240.01             | 46.10                   | H             | -12.90              | 33.20                    | 46.02                   | 12.82          |
| 256.00             | 39.55                   | H             | -5.55               | 34.00                    | 46.02                   | 12.02          |
| 264.04             | 42.19                   | H             | -2.89               | 39.30                    | 46.02                   | 6.72           |
| 271.87             | 37.92                   | H             | -2.22               | 35.70                    | 46.02                   | 10.32          |
| 288.06             | 34.57                   | H             | 1.83                | 36.40                    | 46.02                   | 9.62           |

Table 2. Radiated Measurements at 3meters

FCC ID : PLXHAN-250X

Test Mode : Play mode

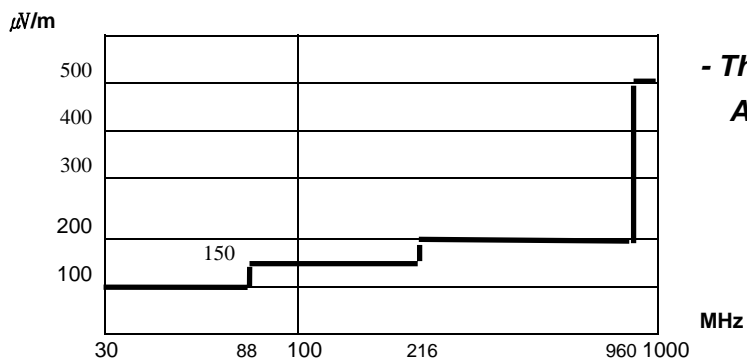
| Frequency<br>(MHz) | Reading<br>(dB $\mu$ V) | Pol*<br>(H/V) | AF+CL+Amp<br>(dB)** | Result<br>(dB $\mu$ V/m) | Limit<br>(dB $\mu$ V/m) | Margin<br>(dB) |
|--------------------|-------------------------|---------------|---------------------|--------------------------|-------------------------|----------------|
| 77.92              | 47.09                   | H             | -20.8               | 26.30                    | 40.00                   | 13.70          |
| 233.87             | 37.09                   | H             | -12.9               | 24.20                    | 46.02                   | 21.82          |
| 285.82             | 36.44                   | H             | -11.6               | 24.80                    | 46.02                   | 21.22          |
| 293.93             | 37.95                   | H             | -11.5               | 26.50                    | 46.02                   | 19.52          |
| 316.53             | 38.87                   | H             | -10.9               | 28.00                    | 46.02                   | 18.02          |
| 327.81             | 37.38                   | H             | -10.6               | 26.80                    | 46.02                   | 19.22          |

Table 3. Radiated Measurements at 3meters

**FCC ID : PLXHAN-250X**
**Test Mode : Tune to the broadcasting channels**

| <b>*)T. Freq.</b><br><b>(MHz)</b> | <b>Frequency</b><br><b>(MHz)</b> | <b>**)Pol.</b><br><b>(H/V)</b> | <b>Reading</b><br><b>(dB)</b> | <b>**)A.F+C.L+Amp</b><br><b>(dB)</b> | <b>Result</b><br><b>(dBμV/m)</b> | <b>Limit</b><br><b>(dBμV/m)</b> | <b>Margin</b><br><b>(dB)</b> |
|-----------------------------------|----------------------------------|--------------------------------|-------------------------------|--------------------------------------|----------------------------------|---------------------------------|------------------------------|
| 87.5                              | 98.20                            | H                              | 47.9                          | -17.6                                | 30.3                             | 43.52                           | 13.22                        |
|                                   | 196.40                           | H                              | 25.1                          | -13.6                                | 11.5                             | 43.52                           | 32.02                        |
|                                   | 294.60                           | H                              | 25.1                          | -11.4                                | 13.7                             | 46.02                           | 32.32                        |
|                                   | 392.80                           | V                              | 29.7                          | -8.9                                 | 20.8                             | 46.02                           | 25.22                        |
|                                   | 491.00                           | H                              | 27.8                          | -6.5                                 | 21.3                             | 46.02                           | 24.72                        |
|                                   | 589.20                           | H                              | 26.4                          | -3.9                                 | 22.5                             | 46.02                           | 23.52                        |
|                                   | 687.40                           | H                              | 26.0                          | -1.2                                 | 24.8                             | 46.02                           | 21.22                        |
|                                   | 785.60                           | H                              | 24.1                          | 1.2                                  | 25.3                             | 46.02                           | 20.72                        |
|                                   | 883.80                           | H                              | 24.7                          | 3.5                                  | 28.2                             | 46.02                           | 17.82                        |
|                                   | 982.00                           | H                              | 25.3                          | 5.4                                  | 30.7                             | 53.98                           | 23.28                        |
| 98.0                              | 108.70                           | V                              | 40.0                          | -17.3                                | 22.7                             | 43.52                           | 20.82                        |
|                                   | 217.40                           | V                              | 25.8                          | -13.3                                | 12.5                             | 46.02                           | 33.52                        |
|                                   | 326.10                           | V                              | 26.4                          | -10.6                                | 15.8                             | 46.02                           | 30.22                        |
|                                   | 434.80                           | V                              | 25.3                          | -7.9                                 | 17.4                             | 46.02                           | 28.62                        |
|                                   | 543.50                           | V                              | 26.0                          | -5.1                                 | 20.9                             | 46.02                           | 25.12                        |
|                                   | 652.20                           | H                              | 27.6                          | -2.2                                 | 25.4                             | 46.02                           | 20.62                        |
|                                   | 760.90                           | V                              | 25.7                          | 0.6                                  | 26.3                             | 46.02                           | 19.72                        |
|                                   | 869.60                           | V                              | 25.7                          | 3.2                                  | 28.9                             | 46.02                           | 17.12                        |
|                                   | 978.30                           | V                              | 25.5                          | 5.3                                  | 30.8                             | 53.98                           | 23.18                        |
| 108.0                             | 118.70                           | H                              | 48.6                          | -17.3                                | 31.3                             | 43.52                           | 12.22                        |
|                                   | 237.40                           | H                              | 32.1                          | -12.8                                | 19.3                             | 46.02                           | 26.72                        |
|                                   | 356.10                           | -                              | -                             | -9.8                                 | -                                | 46.02                           | -                            |
|                                   | 474.80                           | -                              | -                             | -6.9                                 | -                                | 46.02                           | -                            |
|                                   | 593.50                           | -                              | -                             | -3.8                                 | -                                | 46.02                           | -                            |
|                                   | 712.20                           | H                              | 29.0                          | -0.6                                 | 28.40                            | 46.02                           | 17.62                        |
|                                   | 830.90                           | H                              | 27.5                          | 2.3                                  | 29.80                            | 46.02                           | 16.22                        |
|                                   | 949.60                           | -                              | -                             | 4.8                                  | -                                | 46.02                           | -                            |

**Table 4. Radiated Measurements at 3meters**



- The radiated limits are shown on Figure 4.  
Above 1GHz the limit is 500  $\mu V/m$ .

Fig. 4. Limits at 3 meters

**NOTES:**

1. All modes of operation were investigated the worst-case emission are reported.
1. \*T.Freq. = Tuning Frequency
2. \*\*Pol. H =Horizontal V=Vertical
3. \*\*\*AF+CL+Amp. = Antenna Factor + Cable Loss + Amplifier.
4. All modes of operation were investigated the worst-case emission are reported.
5. The limit for Class B device is on the FCC Part section 15.109(a).

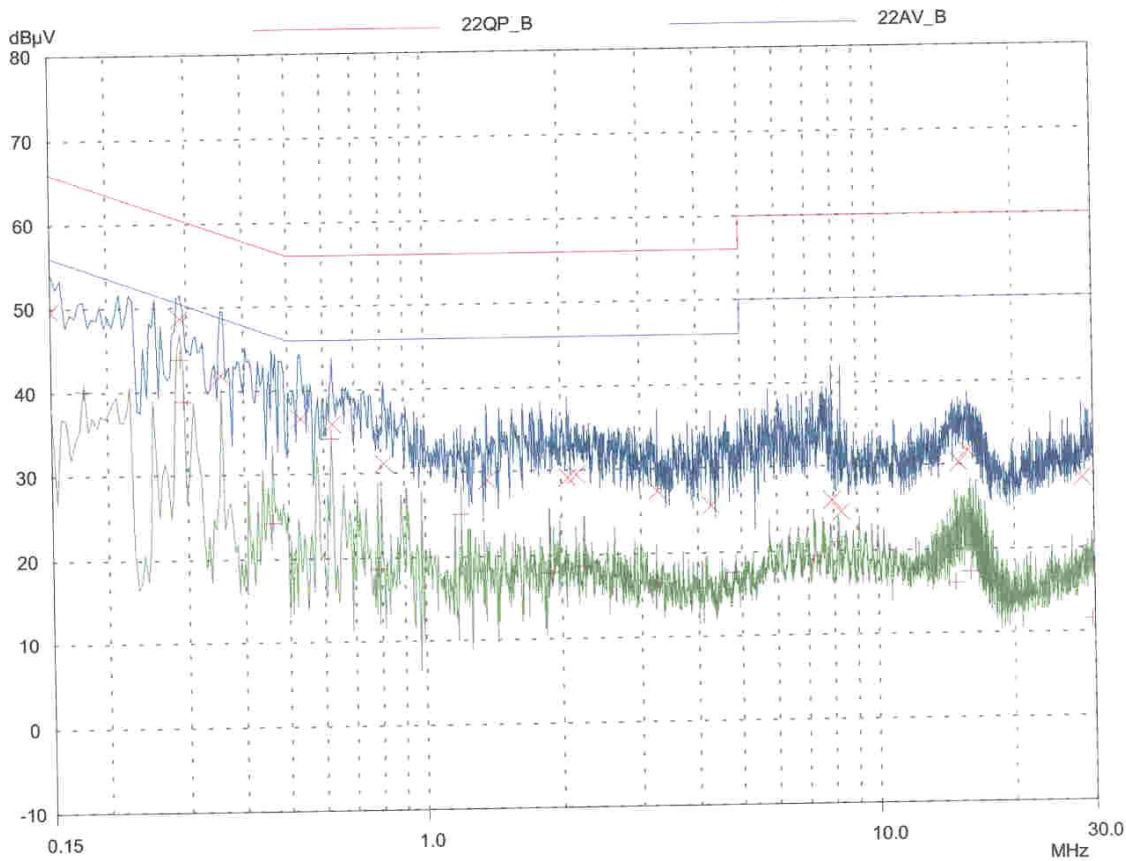
*Y. S. Park*

Tested by Y. S. Park

**PLOTS OF EMISSIONS**

● **Conducted Emission at the Mains port (Line)**

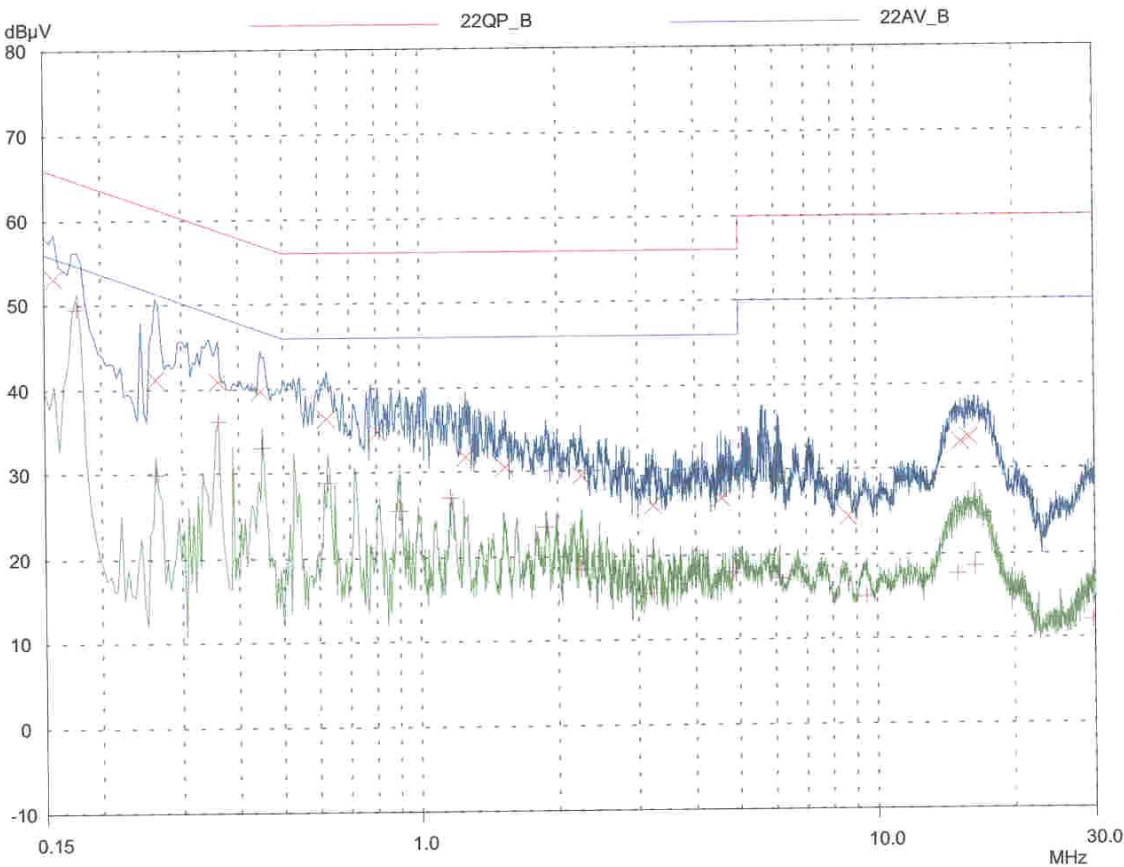
| Scan Settings      |       |           | (1 Range)   |             |        | Receiver Settings |        |       |  |
|--------------------|-------|-----------|-------------|-------------|--------|-------------------|--------|-------|--|
| Frequencies        |       |           |             |             |        |                   |        |       |  |
| Start              | Stop  | Step      | IF BW       | Detector    | M-Time | Atten             | Preamp | OpRge |  |
| 150kHz             | 30MHz | 3.9063kHz | 9kHz        | PK+AV       | 20msec | 10 dB             | OFF    | 60dB  |  |
| Transducer         | No.   | Start     | Stop        | Name        |        |                   |        |       |  |
|                    | 1     | 150kHz    | 30MHz       | CE_LINE     |        |                   |        |       |  |
| Final Measurement: |       |           | Detectors:  | X QP / + AV |        |                   |        |       |  |
|                    |       |           | Meas Time:  | 1sec        |        |                   |        |       |  |
|                    |       |           | Subranges:  | 16          |        |                   |        |       |  |
|                    |       |           | Acc Margin: | 40 dB       |        |                   |        |       |  |



PLOTS OF EMISSIONS

Conducted Emission at the Mains port (Neutral)

| Scan Settings      |  |  | (1 Range)   |        |           | Receiver Settings |          |        |       |
|--------------------|--|--|-------------|--------|-----------|-------------------|----------|--------|-------|
| Frequencies        |  |  | Start       | Stop   | Step      | IF BW             | Detector | M-Time | Atten |
|                    |  |  | 150kHz      | 30MHz  | 3.9063kHz | 9kHz              | PK+AV    | 20msec | 10 dB |
| Transducer         |  |  | No.         | Start  | Stop      | Name              |          |        |       |
|                    |  |  | 1           | 150kHz | 30MHz     | CE_LINE           |          |        |       |
| Final Measurement: |  |  | Detectors:  |        |           | X QP / + AV       |          |        |       |
|                    |  |  | Meas Time:  |        |           | 1sec              |          |        |       |
|                    |  |  | Subranges:  |        |           | 16                |          |        |       |
|                    |  |  | Acc Margin: |        |           | 40 dB             |          |        |       |



## ACCURACY OF MEASUREMENT

The Measurement Uncertainties stated were calculated in accordance with the requirements of NIST Technical Note 1297 with the confidence level of 95%

### 1. Radiation Uncertainty Calculation

| <i>Contribution</i>  | <i>Probability Distribution</i> | <i>Uncertainty(+/-dB)</i> |
|--|---------------------------------|---------------------------|
| Antenna Factor   | Normal (k=2)                    | $\pm 0.5$                 |
| Cable Loss   | Normal (k=2)                    | $\pm 0.04$                |
| Receiver Specification   | Rectangular                     | $\pm 2.0$                 |
| Antenna directivity  | Rectangular                     | $\pm 1.0$                 |
| Antenna Factor variation with Height   |                                 |                           |
| Antenna Phase Center Variation   |                                 |                           |
| Antenna Factor Frequency Interpolation   |                                 |                           |
| Measurement Distance Variation   |                                 |                           |
| Site Imperfections   | Rectangular                     | $\pm 2.0$                 |
| Mismatch:Receiver VRC $r_i=0.3$<br>Antenna VRC $r_R=0.1(B_i)0.4(L_p)$<br>Uncertainty Limits $20\text{Log}(1\pm r_i r_R)$ | U-Shaped                        | $+ 0.25 / - 0.26$         |
| System Repeatibility   | Std.deviation                   | $\pm 0.05$                |
| Repeatability of EUT   | -                               | -                         |
| Combined Standard Uncertainty  | Normal                          | $\pm 1.77$                |
| Expended Uncertainty U   | Normal (k=2)                    | $\pm 3.5$                 |

### 2. Conducted Uncertainty Calculation

| <i>Contribution</i>  | <i>Probability Distribution</i> | <i>Uncertainty(+/-dB)</i> |
|--|---------------------------------|---------------------------|
| Receiver Specification   | Normal (k=2)                    | $\pm 2.0$                 |
| LISN coupling spec.  | Normal (k=2)                    | $\pm 0.4$                 |
| Cable and input attenuator cal.  | Rectangular                     | $\pm 0.4$                 |
| Mismatch:Receiver VRC $r_i=0.3$<br>LISN vrc $r_g=0.1$<br>Uncertainty Limits $20\text{Log}(1\pm r_i r_R)$ | U-Shaped                        | $\pm 0.26$                |
| System Repeatibility   | Std.deviation                   | $\pm 0.68$                |
| Repeatability of EUT   | -                               | -                         |
| Combined Standard Uncertainty  | Normal                          | $\pm 1.18$                |
| Expended Uncertainty U   | Normal (k=2)                    | $\pm 2.4$                 |



## TEST EQUIPMENT

| No. | Instrument              | Manufacturer | Model          | Calibration Date |
|-----|-------------------------|--------------|----------------|------------------|
| 1   | *Test Receiver          | R & S        | ESCS 30        | 2003.09          |
| 2   | Amplifier               | Agilent      | 8447F          | 2003.07          |
| 3   | *Amplifier              | HP           | 8447F          | 2004.01          |
| 4   | *Amplifier              | HP           | 8447F          | 2003.07          |
| 5   | Spectrum Analyzer       | Advantest    | R3265A         | 2003.12          |
| 6   | *Spectrum Analyzer      | HP           | 8568B          | 2003.11          |
| 7   | *Logbicon Super Antenna | Schwarzbeck  | VULB9166       | 2003.05          |
| 8   | Doppels Teg Horn        | EMCO         | DAA-37121      | 2003.10          |
| 9   | Dipole Antenna          | R & S        | VHA9103        | 2003.05          |
| 10  | Dipole Antenna          | R & S        | UHA9105        | 2003.05          |
| 11  | *Biconical Log Antenna  | ARA          | LPB-2520/A     | 2003.05          |
| 12  | Asorbing Clamp          | R & S        | MDS21          | 2003.06          |
| 13  | High Voltage Probe      | R & S        | ESH2-Z3        | 2003.10          |
| 14  | Signal Generater        | R & S        | SMP02          | 2004.03          |
| 15  | Matching Pad            | R & S        | RAM358.5414.02 | 2003.05          |
| 16  | *LISN                   | R & S        | ESH2-Z5        | 2003.08          |
| 17  | LISN                    | Kyoritsu     | KNW-407        | 2003.04          |
| 18  | *LISN                   | Kyoritsu     | KNW-408        | 2003.12          |
| 19  | *Position Controller    | EM Eng.      | N/A            | N/A              |
| 20  | *Turn Table             | EM Eng.      | N/A            | N/A              |
| 21  | *Antenna Mast           | EM Eng.      | N/A            | N/A              |
| 22  | *Anechoic Chamber       | EM Eng.      | N/A            | N/A              |
| 23  | *Shielded Room          | EM Eng.      | N/A            | N/A              |

\*) Test equipment used during the test

## ***APPENDIX D – CIRCUIT DIAGRAM***

---

## ***APPENDIX E – USER’S MANUAL***

---

## ***APPENDIX F – Schematic Diagrams***

---