



Use the record icon to record a voice, the play icon to play the recorded voice, and the list icon to see the recorded file list.

Select the record icon, and the record is started while displaying the following screen.

Press the left button if you want to pause the record and press the right button if you want to finish it.

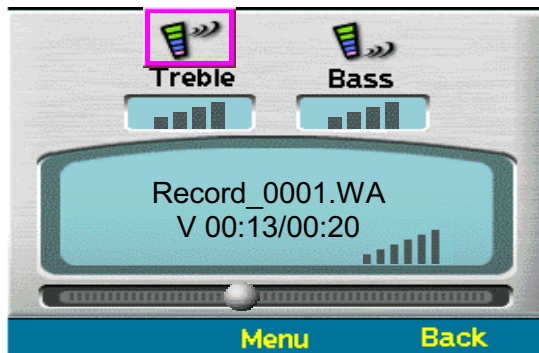


Select the list icon and appear the recorded file list on the screen up to now.



If selecting the play icon or pressing the play button in the list screen, the

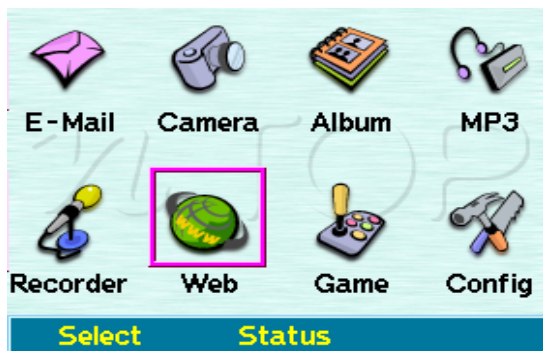
following screen appears.



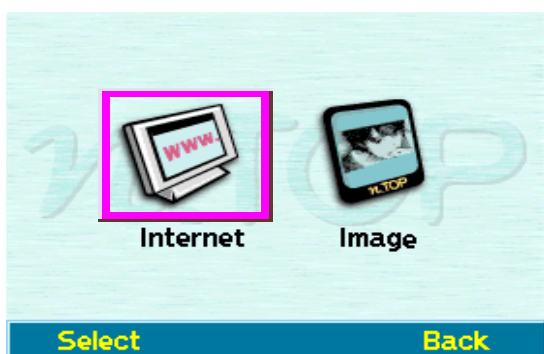
The screen explanation refers to MP3 function.

6. PAVIC

Designate PAVIC icon, and appear the following screen.

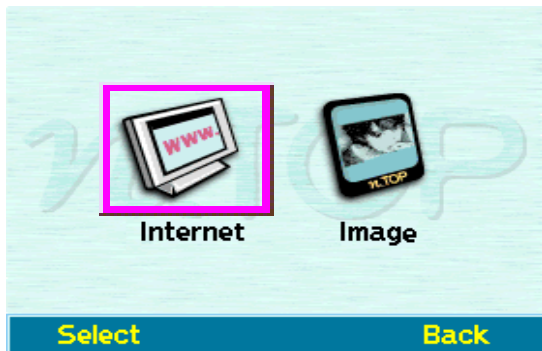


Select this icon, and appear the following screen.



1. PAVIC Web Browser

Designate PAVIC icon, and appear the following screen.



Select this icon, and appear the following screen.

Select web browser, phone as below, and receive web page.



If access is successful, PAVIC initial screen as below can be changed.



Up/down cursor key is used for scrolling the screen.

Use left/right key to move the hyperlink on the screen. (Similar to tab key in PC)

Use left button on the screen below to move to the present selected hyperlink.

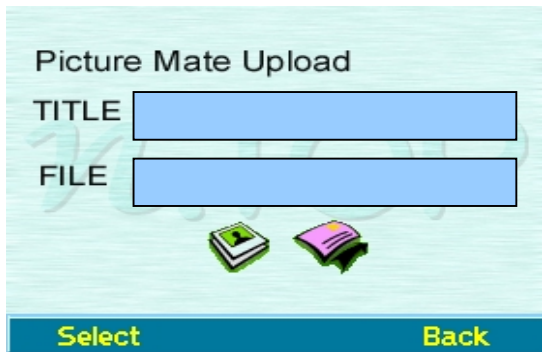
Center button corresponds to the back button in PAVIC.

Right button is the button to exit PAVIC.

When exiting, exit it after disconnecting the connected access and return to PAVIC menu.

2. Picture-friend

Select “ picture-friend” , and appear the following screen.



Input a picture name and select the first icon below.

And appear the album that can select a picture for uploading the picture-friend server.

Select the picture to change into picture-friend and return to the previous screen if pressing the left button.

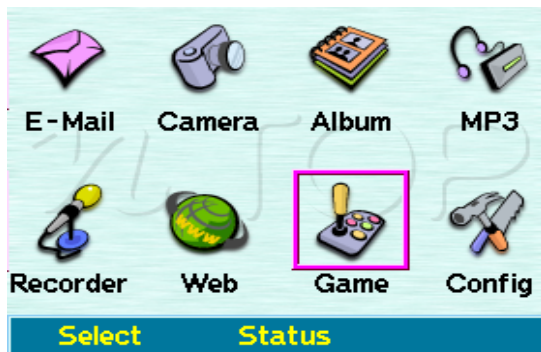
The picture selection is written to correspondent file name.

If pressing the lower right side of icon, phone to PAVIC picture-friend server and upload the changed picture friend.

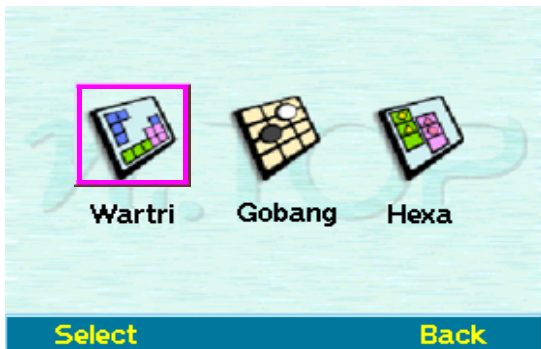
The uploaded picture can be checked with the web browser of PAVIC, mobile phone of WAP support, or Internet.

7. Game

Designate the game icon in top menu, and appear the following screen.



Select this icon, and three types of game are appeared.

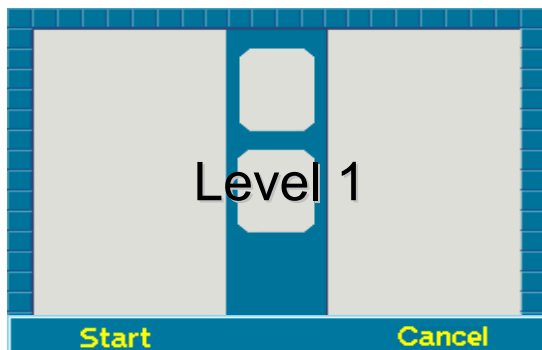


(1) In case of selecting war-tree, select whether single player game or network



game by the access of game server.

If selecting single player game, the user waits to select start or cancel as the



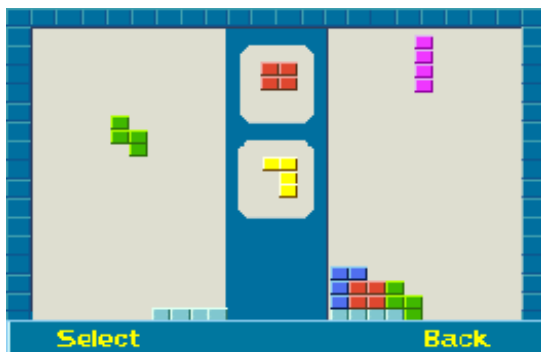
screen below.

If you select the start, you have a game with PAVIC terminal.

Left/right key is used to move war-tree block and up/down key is used to rotate the block.

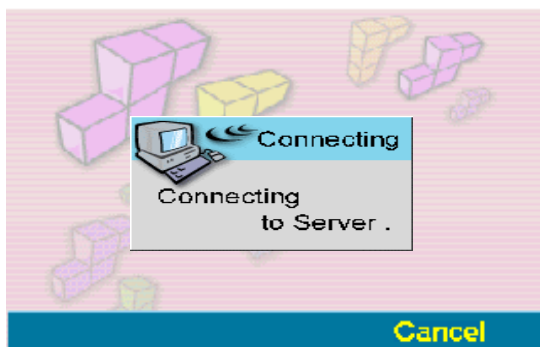
The select key is used to drop the block.

When you press the Esc button even if you are in game, you can exit game and go back to the previous screen.



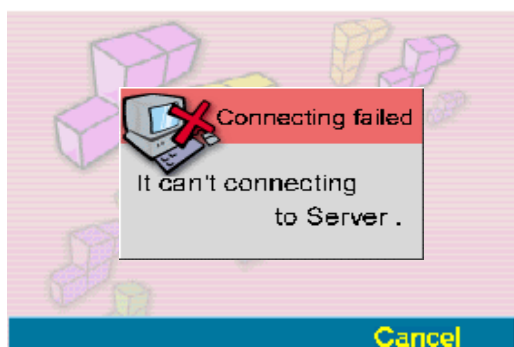
In case of selecting network game, access to network game server

Inform user to be in process of access to network game server.



In case of failing to access to game server, inform user and return to the previous screen.

In case of not being connected at all times, please contact with service center.

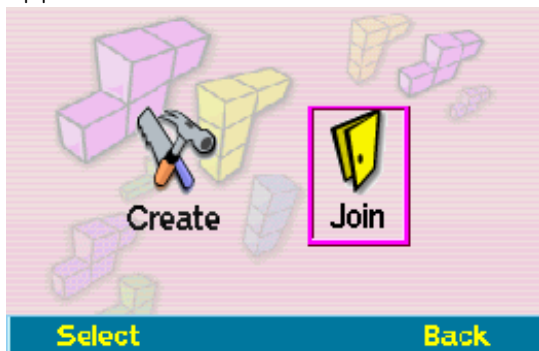


Once you succeed to access to game server, you can select the game server as follows.

If you select the server that you want to join, ask whether the room open/join or not.

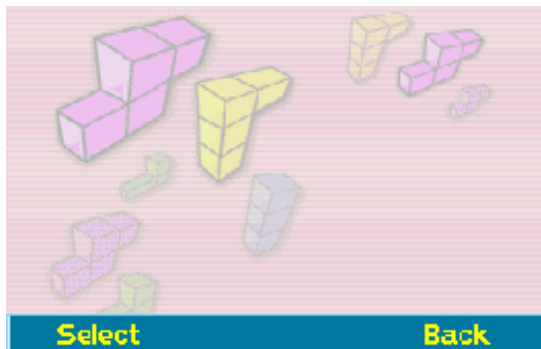


If you select a server, the icon that selects one of the game room open / join is appeared.



If you select join, the list of game room that you can join at present is outputted. After selecting room that you want using up/down key, press the select button and start the game.

If you select the game room open, input the name of game room through editor.



How to use editor is the same as the case of e-mail.

After succeeding to access, both of them select start and game is started.

When you cannot access to the selected room, appear the following message and return to the menu to select the game room open or join again.



If the opponent enters the game room after opening the game room, appear the following screen.

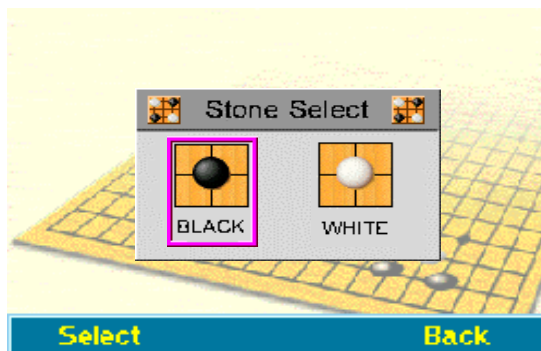
Both of them select start, and game is started.



(2) In case of selecting “ Omok” , select whether single player game or network game by the access of game server.



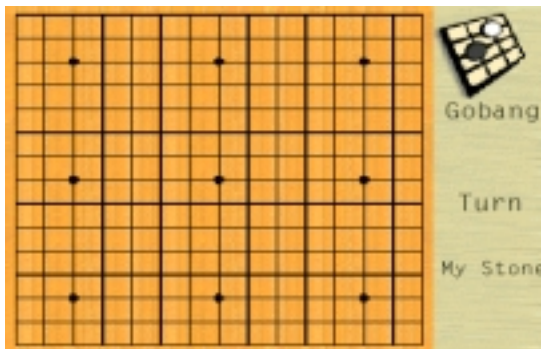
In case of selecting single player game, ask you to select a black stone or a white



stone as below.

Select a stone and start game with black stone first.

After moving the cursor using cursor key, put the stone using the select key.

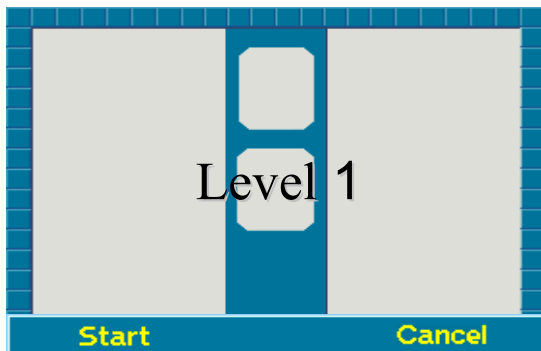


In case of selecting network game, try to access to game server

(3) In case of selecting Hexa, select whether single player game or network game by the access of game server.



In case of selecting single player game, user waits to select start or cancel as



below screen.

If you select start, you start a game alone. Left/right key is used to move the block and up/ down key is used to rotate the block.

The select key is use to drop the block. When you press the Esc button even if you



are in game, you can exit game and go back to the previous screen.

In case of selecting network game, try to access to game server using
A kind of game room, open, and join are also progressed by all same methods.

8. Environmental setup

Designate environmental setup icon, and appear the following screen.



Select this icon, and the following six icons appear.



The function of icon is as follows:

- a. 1. Modem setting
- b. 2. PPP setting
- c. 3. E-mail setting
- d. 4. Web Setting
- e. 5. JPEG compression ratio control (photo quality control)
- f. 6. Time control of Auto screen off (power saving function)
- g. 7. Smart Media card format (similar to hard disk format)
- h. 8. To basic setup

1. Modem setting, and appear the following screen.

Init String: <input type="text"/>		
115200 BPS 57600 BPS 38400 BPS 28800 BPS 19200 BPS		
Select	Apply	Back

- a. Init String : Initialize Modem following command
- b. Choose RS-232 Speed with your mobile phone

2. PPP setting, and appear the following screen.

PPP ID: <input type="text"/>			
PPP PW: <input type="text"/>			
Dial Number: <input type="text"/>			
DNS:	<input type="text"/>	<input type="text"/>	<input type="text"/>
Select	Apply	Back	

- a. PPP ID : put your PPP Login ID
- b. PPP PW: put your PPP Login Password
- c. Dial Number: put your ISP Dial Number
- d. DNS : put your ISP' s DNS IP address

3. E-mail setting, and appear the following screen.

POP3 Server: <input type="text"/>	
SMTP Server: <input type="text"/>	
User:	<input type="text"/>
PassWord:	<input type="text"/>
Select	Apply Back

- a. POP3 Server: put POP3 Server' s name or IP address what you use
- b. SMTP Server: put SMTP Server' s name or IP address what you use
- c. User : put your POP3 Sever' s Login ID
- d. Password: put your POP3 Server' s Login password
- e. Mail Address : put your Email Address.
- f. POP3 PORT: POP3 Server' s Port Number(you don' t have to change that)
- g. SMTP PORT: SMTP Server' s Port Number(you don' t have to change that)

4. Web Setting, and appear the following screen.

Default Page:	<input type="text"/>
Select	Apply Back

- a. Default Page: Web Browser' s Default page

5. Select JPEG compression level, and appear the following screen.



Designate the setup value of JPEG level using up/down cursor key.

The higher up (to the ultra best), the better photo quality, but file size grows larger.

Normally, good (basic setting value) is enough.

If pressing the setup button, the level is set to the designated value, and moves to previous screen.

If pressing the Esc button, the designated value is cancelled, and moves to previous screen.

6. Select LCD power off time out setup in MP3 player, and appear the following screen.

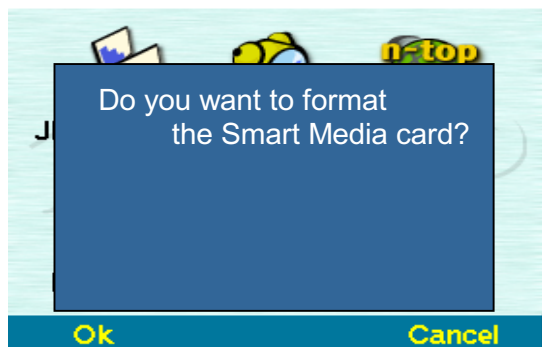


Designate the setting value of LCD power off time out using up/down cursor key.

If pressing the setup button, it is set to the designated value, and moves to previous screen.

If pressing the Esc button, the designated value is cancelled, and moves to previous screen.

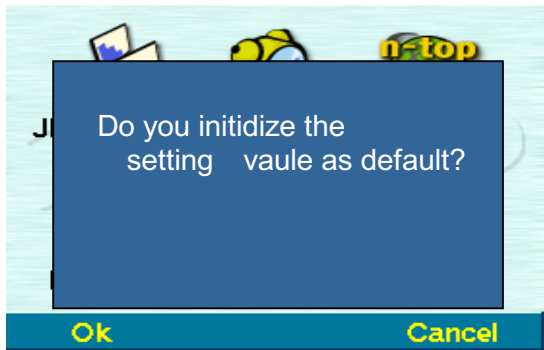
7. Select smart media card format, and appear the following screen.



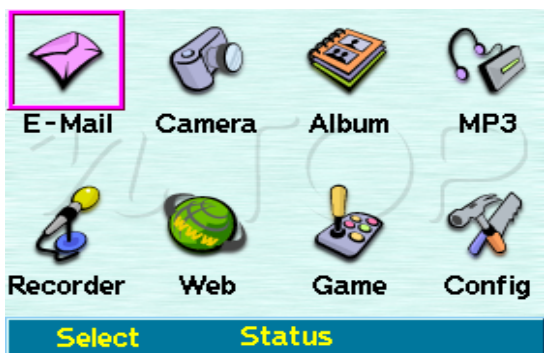
If pressing the enter button, format Smart Media and return to the initial screen.

Caution: If you format Smart Media, all saved files are deleted

8. Select basic setup, and appear the following screen.



If pressing the enter button, the environmental setup values go back to the initial condition and return to the initial screen.



5. FAQ (Frequently Asked Question)

Q: Is not power turned on?

A: If hold switch is on, power cannot be turned on. In this case, switch it off and turn on the power.

Q: After turning on the power, other switches do not work. What can I do?

A: Check whether the switch is on.

Q: When playing MP3 file in Smart Media card, the file in smart media card does not appear.

A: Check whether Smart Media card is exactly inserted.

Q: When recording a voice to Smart Media card, voice recorded file is not saved to smart media card and saved to the internal memory.

A: Check whether Smart Media card is exactly inserted.

Q: Why power is not turned on?

A: After charging the battery with a charger, turn on the power again.

Q: Power is turned off automatically.

A: In case of not using any function, provide the function that the power is turned off automatically.

Please use the power saving function of environmental setup menu to control time.

When functioning the camera.

Q: When an image is not displayed in LCD.

A: Check that camera cover is opened, if not, please opens the camera cover.

Q: When an image is not well displayed in LCD.

A: Adjust the focus control lever in front of camera and try to do again after setting camera.

When charging.

Q: Charging sign LCD is not turned on.

A: Please turn the jack to the up and down direction because the jack of charger happens not to fix it.

E-mail and Web (PAVIC)

Q: E-mail and Web (PAVIC) cannot be executed. What can I do?

A: – Check whether serial cable is correctly inserted to mobile phone and PAVIC or the direction is inserted into reverse.

– Check that mobile phone access speed (refer to mobile phone manual) and PAVIC access speed (refer to PAVIC environmental setup page) are same.

Please set the Internet access speed of mobile phone as normal.

In case of changing the access speed of PAVIC, turn off the power, and turn on the power again.

USB

(Caution) When communicating with player using USB, the player button does not work.

Q: When message appears: “ USB ERROR!!! Check the USB connection.”

A: When using On/Off button to connect USB after executing PC software, this error can be occurred. In the case, check the following procedure.

1. Check that USB plug is inserted correctly.
2. If USB plug is inserted correctly, insert it again after extracting plug.
3. Click ON/OFF button to connect USB.
4. If not being connected, repeat no.3 after rebooting player.

Q: When message appears: “ USB ERROR!!! Connect USB again after rebooting player.”

A: This error can be occurred between PC software and player during communicating.

When error message is occurred in player, press the reset button, and you may use after rebooting.

If not, press reset button, and you may use it again.

Q: Error occurs when uploading and downloading after connecting USB.

A: If USB cable is unplugged or taken out during downloading, an error message appears in PC software: “ file transmission error!!! Connect USB again after rebooting player.” In this case, you may use it again after pressing reset button.

If USB cable is unplugged or taken out during uploading, an error message appears in PC software: “ file transmission error!!! Connect USB again after rebooting player” And an error message appears in player: “ USB abnormally unplugged press OK button to continue.” In this case, after rebooting by pressing the select button, and you may use it again.

Q: When message appears: “ Insufficient memory”

A: This error occurs when the remained file size in player is smaller than the selected file size during downloading file.

Q: When message appears:” Cannot read Smart Media”

A: This error occurs when Smart Media is not inserted or broken.

Q: When message appears:” Cannot read internal media”

A: This error occurs when internal memory is broken or PC communication error is occurred.

If these kinds of message appear again after rebooting player, use it after formatting media.

If the other items are occurred, please contact after sales service center.

6. Technical support

If you need technical support, please consult first where you purchased PAVIC, and then contact the following address.

The address of Barovision Corporation:
Bosung building, 942-17 Daechi-dong, Kangnam-Gu, Seoul, Korea
Barovision Corporation
Zip code: 135-280
Tel.: 82-(0)2-3453-9768 / Fax: 82-(0)2-561-9064
Web site: <http://www.varovision.com>
E-mail address: dshwang@varovision.com

Caution when handling

1. Avoid hitting by strong impact.
PAVIC can be damaged if dropping from high place or hitting with a heavy thing.
2. Do not allow a water to get into PAVIC.
If the water got into PAVIC, internal parts of it is damaged as this could result in the problem on PAVIC.
If PAVIC is wet, wipe it with a dry cloth. In case of abnormality, consult service center.
3. Keep PAVIC
Avoid using or storing PAVIC in locations subject to high humidity, strong magnetic force and high heat.

Varovision Corporation accepts no liability whatsoever for the performance and functional trouble by user' s intentional faults.

Warranty card

Product name	1-year warranty
Model	
Serial No.	
Customer name	
Tel. No.	
Address	
Where purchased	
Tel. No.	
Address	

When you need to repair it, submit this warranty card filled out the purchased date so that you can get satisfactory service. So please keep it well.