

FCC

This device complies with part 15 of the FCC Rules. Operation is subject to the following two conditions:

(1) This device may not cause harmful interference, and (2) this device must accept any interference received, including interference that may cause undesired operation.

Caution : Any changes or modifications in construction of this device which are not expressly approved by the party responsible for compliance could void the user's authority to operate the equipment

Note : This equipment has been tested and found to comply with the limits for a Class B digital device, pursuant to part 15 of the FCC Rules. These limits are designed to provide reasonable protection against harmful interference in a residential installation. This equipment generates, uses and can radiate radio frequency energy and, if not installed and used in accordance with the instructions, may cause harmful interference to radio communications. However, there is no guarantee that interference will not occur in a particular installation. If this equipment does cause harmful interference to radio or television reception, which can be determined by turning the equipment off and on, the user is encouraged to try to correct the interference by one or more of the following measures:

- Reorient or relocate the receiving antenna.
- Increase the separation between the equipment and receiver.
- Connect the equipment into an outlet on a circuit different from that to which the receiver is connected.
- Consult the dealer or an experienced radio/TV technician for help.

1. What is PAVIC

This is the world first multimedia terminal that can be enjoyable a digital camera and a MP3 player with one terminal.

You can enjoy the wireless data service by using Internet and e-mail transmission (photo and voice attachment available) by connecting mobile phone.

The wireless service provides a picture-friend and information service (news, weather, stars, stock, a multi-bulletin board, etc.) through Internet.

Besides, the record function that can be recorded in many long hours, album function that can be saved digital camera photo, and game function that can be enjoyable network game as well as single player game are provided.

Also allow the data transmission and receipt between PC and PAVIC in rapid speed by using PC cable of USB type.

2. Before using

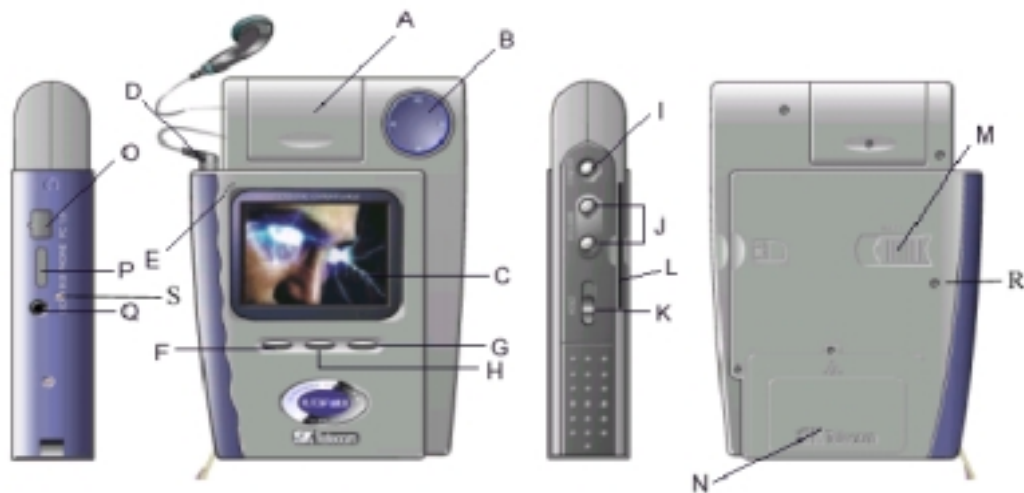
1. PAVIC contents

Accessory

- PAVIC player (Lithium-Ion battery included)
- Earphone
- USB cable
- CD
- RS 232 cable
- AC/DC adapter
- User' s manual
- Warranty card

2. PAVIC overview

Left / front / right / rear view



- A. Camera lens: Use this camera when taking a photograph.
- B. Cursor keys: Use these keys to move the icon, next page, and up/down.
- C. LCD Panel: Display the icon, photograph, and progressing status.
- D. Earphone Jack: The place to connect earphone.
- E. Built – in MIC: Use when recording the voice.
- F. Select: Use when selecting the menu.
- G. Esc: Use when moving to the previous screen and stopping other working.
- H. Menu: Use when setting PAVIC status and seeing various functional icon to the menu.
- I. On/off: Use when turning on/off the power. Press shortly one time in case of LCD off, and press continuously for 3 seconds in case of power off.
- J. Volume up/down: Use when adjusting the volume up/down. Besides, use as a function key (characters input etc.)

- K. Hold: Use when locking up all buttons.
- L. Smart Media card holder: The place to insert Smart Media.
- M. Smart Media card ejects: Use when ejecting the Smart Media card
- N. Charging battery cover: Used for covering battery in the slot.
- O. USB port: Use when downloading the MP3 file after connecting PC and PAVIC.
- P. Mobile Phone Port: Use when transmitting and receiving data after connecting mobile phone and PAVIC.
- Q. AC/DC adapter jack: Use when connecting AC/DC adapter.
- R. Reset: Use reset button when program is down.
- S. Charging sign LED: Check whether AC/DC adapter is properly inserted or not.

3. Top menu



Turn on the power and appear the eight icons on the screen as above.

Up/down cursor key is used to designate the up/down direction, and left/right cursor key allows you to select an icon while moving left and right direction.

Appear a button function in a lower column of icon.

Button located on the left as above figure has a selection function, and this button can select each icon.

– The function of each icon is as follows.

A. E-mail: the icon to use E-mail box, read, write, send, receive, directory, etc.

B. Camera: Use this icon to take a photograph

C. Album: Use this icon to see a taken photo and to delete the stored photo.

D. MP3: Use this icon to play MP3

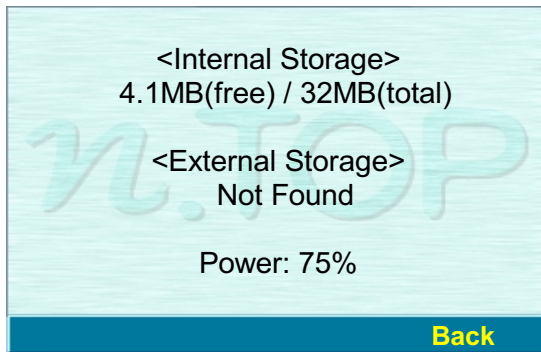
E. Recorder: Use this icon to record a voice and to play it.

F. PAVIC: Web Browser, picture-friend.

G. Game: Single player and network game

H. Setup: Setup icon

If you press the status button on top menu, you can check available memory and the amount of available battery.



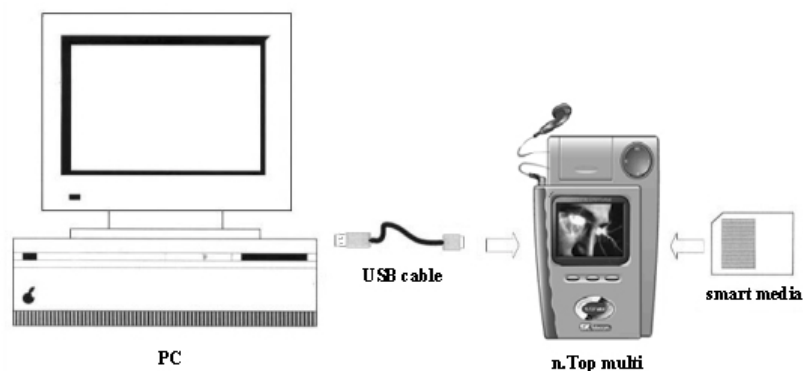
Internal memory that is the amount of used memory in PAVIC indicates available memory in front and total memory in next.

External memory indicates the amount of used memory in Smart Media card.

4.Connection between PAVIC and PC

Connect player and PC using an enclosed USB cable in PAVIC.

After installing the program of provided CD, player should be connected in USB port of PC as figure below to use the file transmission between PC and PAVIC and



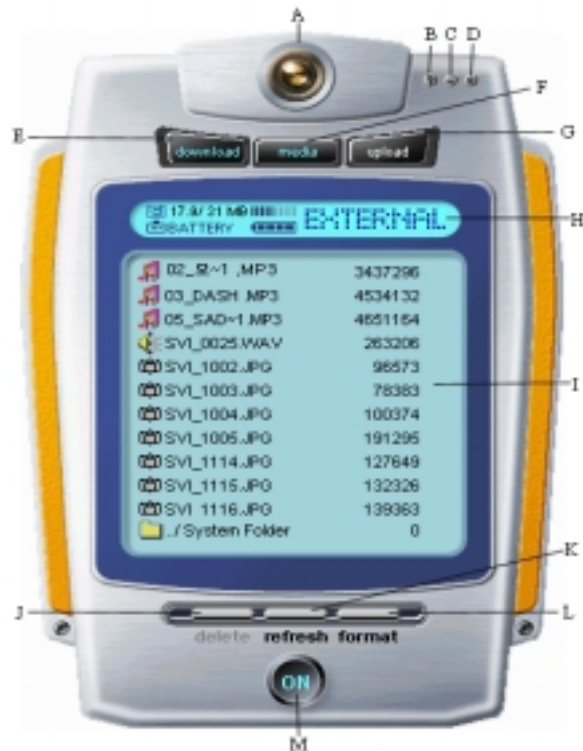
various functions.

Before using PC software through USB, please check the following items.

- Is USB cable connected properly to USB port?
- Is USB driver installed properly?

3. PAVIC Manager

This is PC software that has a file save, delete, and media format function of player between player and PC through USB.



- A. Connection display
Display the connected status between PC software and player.
- B. Help
Show dialog box that displays software version information.
- C. Minimize
Window minimization.
- D. Exit
Program exit.
- E. Download
Transmit the saved file in PC to player.
- F. Media change
Select kinds of storage media (flash memory / Smart Media) in player.
- G. Upload

Transmit the saved file in player to PC.

H. Player information panel

Selected media remainder / total size, battery remainder and selected media type display.

I. File list window

Display the saved file list in player.

J. Delete

Delete the selected file in player.

K. Refresh

Update the file list of player to display the latest list.

L. Media format

Format the selected media.

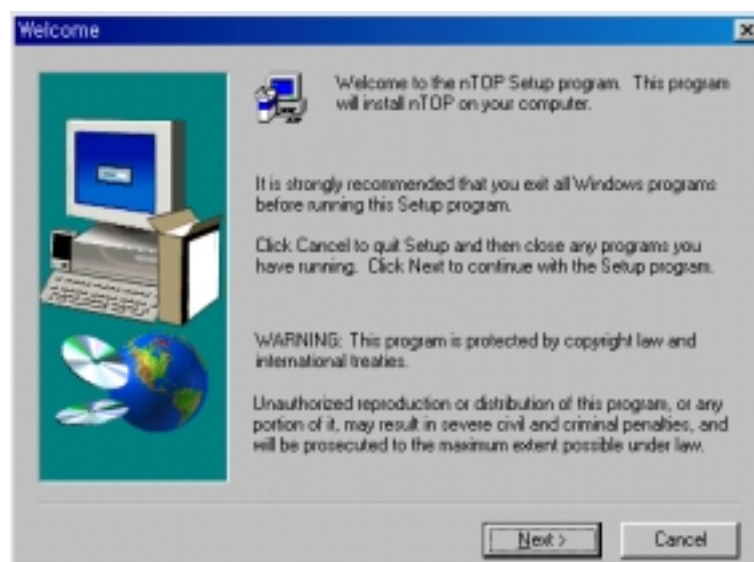
M. Connection

Connect and disconnect USB between PC and player.

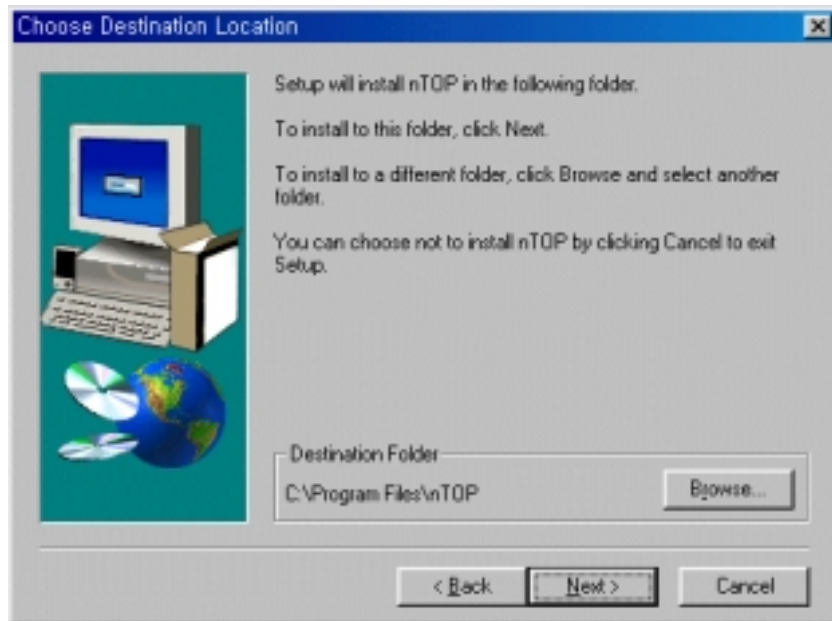
1. Software installation

Install PAVIC software in PC.

Insert install CD to CD-ROM drive, then dialog box is shown as below. Otherwise, double-click setup.exe file in CD. If you want to install this software, click Next button.

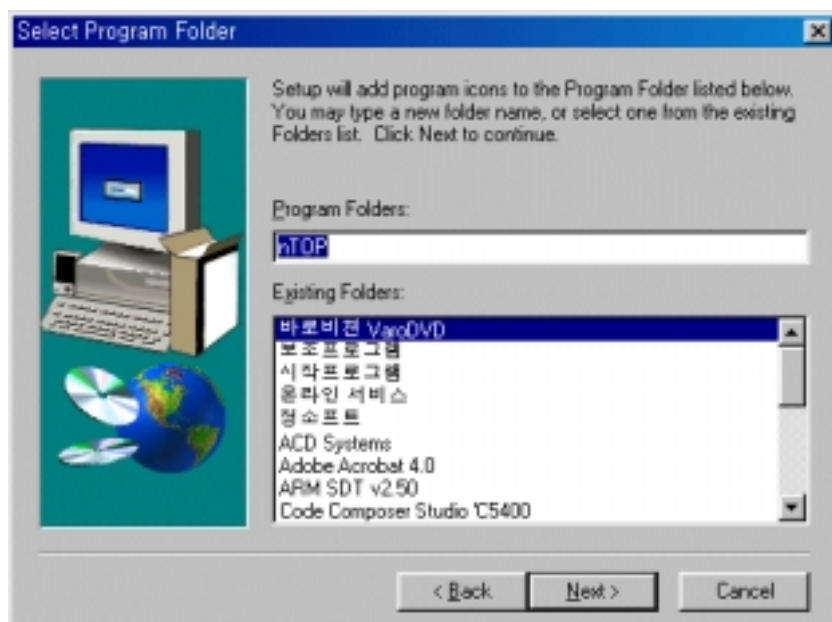


To select location to be installed in , click “ Browser” button in the following dialogue box, and click “ Next” button after selecting the directory for installation. If you want to install it under the default directory(Program Files\ nTOP), click Next

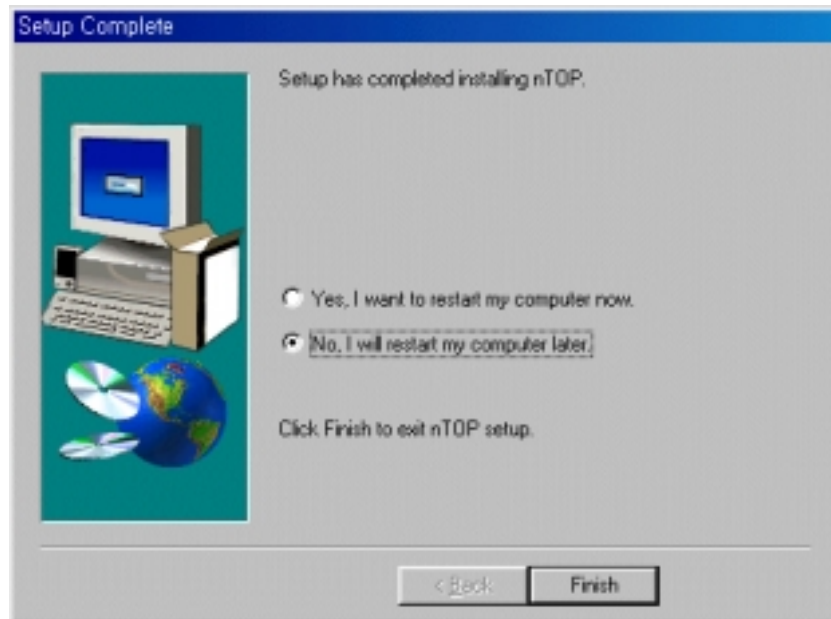


button.

Add icon in the program folder of start menu. Click Next to continue the installation.



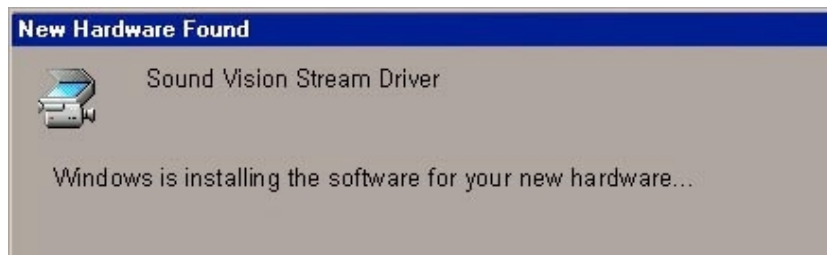
If installation is completed successfully, the following dialog box is appeared. Click “ Finish” button. then, the Installation is finished.



2. Install USB driver

Install USB driver to connect PC and player.

After turning on player power, connect USB cable between PC and Player.
USB driver will be installed automatically as below.



If the following dialog box is appeared after installing USB driver, click “ Browse” button.

After selecting the directory located on Windows 98 installation file, click Enter button.

If this procedure is finished, USB Driver installation is completed.



3. How to use PAVIC manager

1. Connection setup

Setup the connection between PC and player and select a kind of media.
This has a function that displays media information and saved file in media.

- Turn on the player power.
- Execute PAVIC program.
- Connect USB cable between PC and player.
- After clicking OFF button, if the connection is successful as below figure, you can check that the color of lens is reversed.
- If you want to disconnect under the condition that the connection setup is finished between PC and player, click “ On” button.

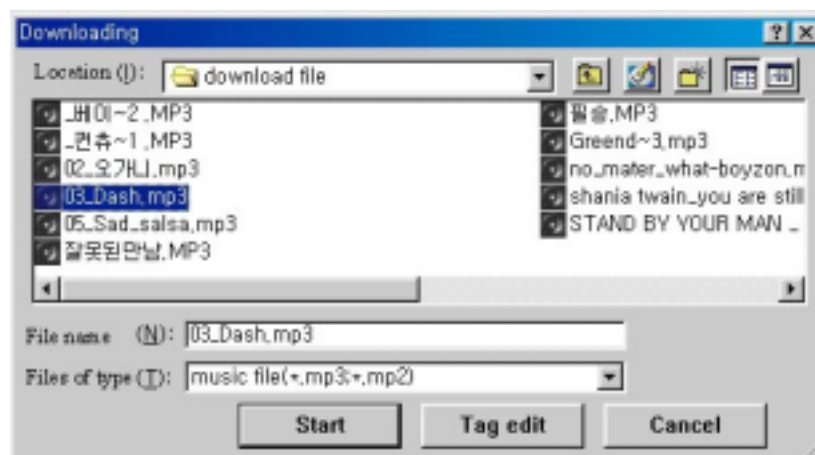


After succeeding the connection, click “ Media” button and change into internal/external media. And enable you to check the content of saved file in correspondent media, whole size of media, and the available memory.

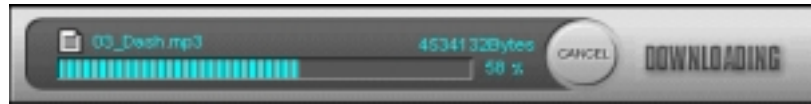


2. File download

This has the function that transmits the saved file in PC to player. Click “ Download” button under the condition that the connection is set, and the following dialog box appears.



After selecting the file to transmit, click the start button of dialog box.
And the progressing bar is displayed as below and file transmission is progressed.



Caution: The warning message appears when the available memory of media in player is smaller than the selected file size. In this case, if you want to download the selected file continuously, delete some files in player.
After having enough memory, repeat the above procedure again.

3. File upload

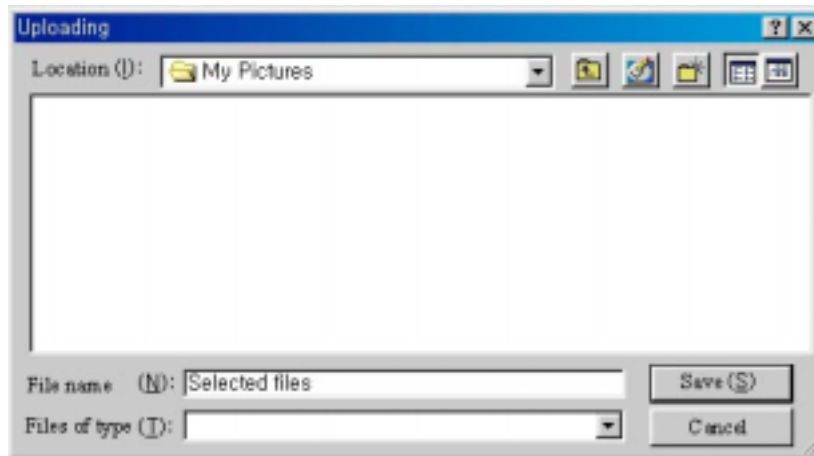
This has the function that transmits the saved file in player to PC.
Select the file that you want to transmit in list box. When the file is selected, the upload button is activated.
(MP3 file and system file in system folder cannot be used the function of file



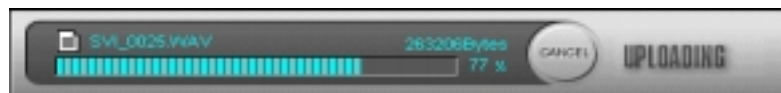
upload.)

Click “ upload” button, and the following dialog box appears.

After selecting the position of directory to save, press the save button.



The progressing bar as below is displayed and file transmission is progressed.



4. File delete

This has the function that deletes the selected file among saved files in player.
(It cannot delete the file that has “_BM” and ”_DK” extension among system



file in system folder.)

When selecting the file to delete in list box, you can see that the delete characters located on the button lower are activated.



Click “ delete” button, and the selected file is deleted.

5. Media format

This has the function that formats Internal and external media in player.
Click “ Media” button and select the type of media to format.



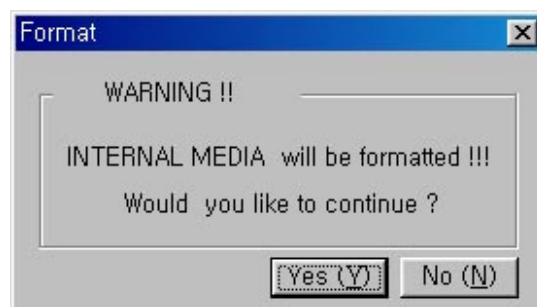
- Internal media format

After selecting internal media, click “ format” button.



And the following dialog box for confirmation is appeared.

Click “ enter” button if you want to format and click ” cancel” button if you want to cancel.



Caution : If formatting internal media, all of files used in player are deleted. After formatting, therefore, System files are installed by PAVIC manager automatically.

While system files are installed, player must not be powered off.

After formatting, reboot the player again. In order to check whether system file is downloaded correctly, you may double-click the system folder in list box as figure



below.



- Format external media

After selecting external media, click “ format” button.

And the following dialog box for confirmation is appeared.

Click “ Yes” button if you want to format and click ” No” button if you want to



cancel.

6. Image preview

Preview the saved photo (JPEG image) in player

When selecting the camera photo (jpg file) in list box, the correspondent photo is shown to the lower part of list box.



4. Player upgrade

In order to upgrade the player as the latest version, follow the procedure below.

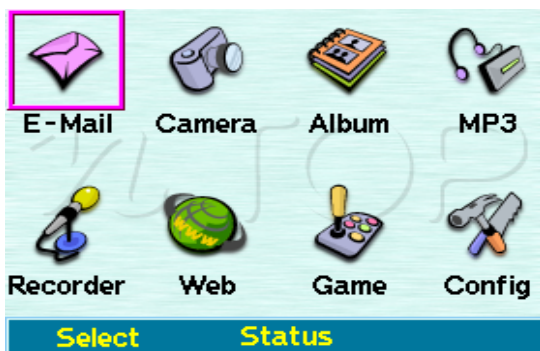
1. Download upgrade file (REFDxxxx.bin) from the correspondent website.
2. Save the downloaded file to the system folder of internal media in player using PAVIC manager program.
3. Check whether the upgrade file is saved or not by double- clicking the system folder in list box of PAVIC manager.
4. If you finish to check the save, reboot the Player. Then, you will see “ upgrade firmware” message.
5. After checking the message that upgrade is finished, reboot the player again.

After rebooting the player, upgrade file saved to the internal media in player is deleted automatically.

4. PAVIC

1. E-mail

Designate E-mail icon to the front top menu, and appear the following screen. Select this icon, and appear the following screen.



Select E-mail icon, and appear the five icons on the screen as above. Each icon can be designated as the same method as the front top menu. Designated icon can be selected as the select function button. If you want to return to the previous screen, you may press the Esc button.