

CERTIFICATE OF COMPLIANCE SAR EVALUATION

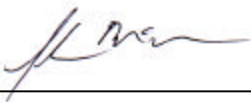
| | |
|---|--|
| <p><u>Test Lab:</u></p> <p>CELLTECH RESEARCH INC. Testing and Engineering Lab 1955 Moss Court Kelowna, B.C. Canada V1Y 9L3 Phone: 250 - 860-3130 Fax: 250 - 860-3110 Toll Free: 1-877-545-6287 e-mail: info@celltechlabs.com web site: www.celltechlabs.com</p> | <p><u>Applicant Information:</u></p> <p>GTRAN INC. 12071 Tejon St. Suite 450 Westminster, CO 80234 Contact: David Much</p> |
|---|--|

| | |
|------------------------------|---|
| FCC ID: | PL5GCP-3000 |
| Model(s): | GCP-3000 |
| Equipment Type: | PCMCIA Cellular CDMA Modem Card installed in Laptop PC |
| Equipment Class: | Licensed Non-Broadcast Station Transmitter (TNB) |
| Tx Frequency Range: | 824.70 - 848.31 MHz |
| Rx Frequency Range: | 869.70 - 893.31 MHz |
| Max. RF Output Power: | 25.5 dBm (Conducted) |
| Antenna Type: | Fixed Dipole |
| FCC Rule Part(s): | 2.1093; ET Docket 96.326 |

This wireless mobile and/or portable device has been shown to be compliant for localized Specific Absorption Rate (SAR) for uncontrolled environment/general exposure limits specified in ANSI/IEEE Std. C95.1-1992 and has been tested in accordance with the measurement procedures specified in ANSI/IEEE Std. C95.3-1999.

I attest to the accuracy of data. All measurements were performed by me or were made under my supervision and are correct to the best of my knowledge and belief. I assume full responsibility for the completeness of these measurements and vouch for the qualifications of all persons taking them.

Celltech Research Inc. certifies that no party to this application has been denied FCC benefits pursuant to Section 5301 of the Anti-Drug Abuse Act of 1988, 21 U.S.C. 853(a).



Shawn McMillen
General Manager
Celltech Research Inc.

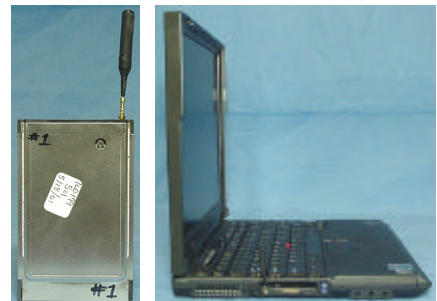


TABLE OF CONTENTS

| | | |
|------|---|----|
| 1.0 | INTRODUCTION..... | 1 |
| 2.0 | DESCRIPTION OF EUT..... | 1 |
| 3.0 | SAR MEASUREMENT SYSTEM | 2 |
| 4.0 | MEASUREMENT SUMMARY..... | 3 |
| 5.0 | DETAILS OF SAR EVALUATION..... | 4 |
| 6.0 | EVALUATION PROCEDURES..... | 4 |
| 7.0 | SAR LIMITS..... | 5 |
| 8.0 | SYSTEM VALIDATION..... | 5 |
| 9.0 | SIMULATED EQUIVALENT TISSUES..... | 6 |
| 10.0 | TISSUE PARAMETERS..... | 6 |
| 11.0 | SYSTEM SPECIFICATIONS..... | 7 |
| 12.0 | TEST EQUIPMENT LIST..... | 8 |
| 13.0 | MEASUREMENT UNCERTAINTIES..... | 9 |
| 14.0 | REFERENCES..... | 10 |
| | APPENDIX A - SAR MEASUREMENT DATA..... | 11 |
| | APPENDIX B - DIPOLE VALIDATION..... | 12 |
| | APPENDIX C - PROBE CALIBRATION..... | 13 |
| | APPENDIX D - SAR TEST SETUP PHOTOGRAPHS..... | 14 |
| | APPENDIX E - EUT PHOTOGRAPHS..... | 15 |

1.0 INTRODUCTION

This measurement report shows compliance of the GTRAN GCP-3000 PCMCIA Cellular CDMA Modem Card FCC ID: PL5GCP-3000 (installed in IBM ThinkPad Laptop PC) with FCC Part 2, 1093, ET Docket 96-326 Rules for mobile and portable devices. The test procedures, as described in American National Standards Institute C95.1-1992 (1), FCC OET Bulletin 65-1997 were employed. A description of the product and operating configuration, detailed summary of the test results, methodology and procedures used in the evaluation, equipment used, and the various provisions of the rules are included within this test report.

2.0 DESCRIPTION of Equipment Under Test (EUT)

| | | | |
|---------------------------------|---------------------------------|-----------------------------|--|
| EUT Type | PCMCIA Cellular CDMA Modem Card | Equipment Class | Licensed Non-Broadcast Station Transmitter (TNB) |
| FCC ID | PL5GCP-3000 | Model No.(s) | GCP-3000 |
| Tx Frequency Range (MHz) | 824.70 - 848.31 | S/N No. | Pre-production |
| Rx Frequency Range (MHz) | 869.70 - 893.31 | Max. RF Output Power | 25.5 dBm (Conducted) |
| Antenna Type | Fixed Dipole | Signal Modulation(s) | CDMA |

3.0 SAR MEASUREMENT SYSTEM

Celltech Research SAR measurement facility utilizes the Dosimetric Assessment System (DASY™) manufactured by Schmid & Partner Engineering AG (SPEAG™) of Zurich, Switzerland. The DASY system is comprised of the robot controller, computer, near-field probe, probe alignment sensor, and the generic twin phantom containing brain or muscle equivalent material. The robot is a six-axis industrial robot performing precise movements to position the probe to the location (points) of maximum electromagnetic field (EMF). A cell controller system contains the power supply, robot controller, teach pendant (Joystick), and remote control, is used to drive the robot motors. The Staubli robot is connected to the cell controller to allow software manipulation of the robot. A data acquisition electronics (DAE) circuit performs the signal amplification, signal multiplexing, AD-conversion, offset measurements, mechanical surface detection, collision detection, etc. is connected to the Electro-optical coupler (EOC). The EOC performs the conversion from the optical into digital electric signal of the DAE and transfers data to the PC plug-in card. The DAE3 utilizes a highly sensitive electrometer-grade preamplifier with auto-zeroing, a channel and gain-switching multiplexer, a fast 16 bit AD-converter and a command decoder and control logic unit. Transmission to the PC-card is accomplished through an optical downlink for data and status information and an optical uplink for commands and clock lines. The mechanical probe-mounting device includes two different sensor systems for frontal and sidewise probe contacts. They are also used for mechanical surface detection and probe collision detection. The robot uses its own controller with a built in VME-bus computer.



DASY3 SAR Measurement System

4.0 MEASUREMENT SUMMARY

The measurement results were obtained with the EUT tested in the conditions described in this report. Detailed measurement data and plots showing the maximum SAR location of the EUT are reported in Appendix A.

Body SAR Measurement Results

| Freq. (MHz) | Channel | Mode Tested | Conducted Power (dBm) | Antenna Position | Phantom Position | Separation Distance (cm) | SAR (w/kg) |
|--|---------|-------------|--|------------------|------------------|--------------------------|------------|
| 824.70 | 1013 | CDMA | 25.5 | Vertical | Flat | 1.0 | 0.674 |
| 835.89 | 363 | CDMA | 25.5 | Vertical | Flat | 1.0 | 0.443 |
| 848.31 | 777 | CDMA | 25.5 | Vertical | Flat | 1.0 | 0.715 |
| Mixture Type: Muscle Dielectric Constant: 56.1 Conductivity: 0.95 | | | ANSI / IEEE C95.1 1992 - SAFETY LIMIT Spatial Peak Uncontrolled Exposure/General Population Body SAR: 1.6 W/kg (averaged over 1 gram) | | | | |

Notes:

1. The SAR values found were below the maximum limit of 1.6 w/kg.
2. The highest SAR value found was 0.715 w/kg.
3. The EUT was tested for body SAR with a 1.0cm separation distance between the antenna and the outer surface of the planar phantom.



Body SAR Test Setup with 1.0cm separation distance

5.0 DETAILS OF SAR EVALUATION

The GTRAN GCP-3000 PCMCIA Cellular CDMA Modem Card FCC ID: PL5GCP-3000 (installed in IBM ThinkPad Laptop PC) was found to be compliant for localized Specific Absorption Rate (SAR) based on the following test provisions and conditions:

1. The EUT was tested for body SAR in a laptop configuration with the antenna in the vertical upright position and placed parallel to the outer surface of the planar phantom. A 1.0cm separation distance was maintained between the antenna and the outer surface of the planar phantom.
2. SAR measurements were evaluated at maximum power and the unit was operated for an appropriate period prior to the evaluation in order to minimize drift. The conducted power level was checked before and after each test.
3. The device was keyed to operate continuously in the transmit mode for the duration of the test.
4. The location of the maximum spatial SAR distribution (Hot Spot) was determined relative to the device and its antenna.
5. The EUT was tested with a fully charged battery.

6.0 EVALUATION PROCEDURES

The Specific Absorption Rate (SAR) evaluation was performed in the following manner:

- a. (i) The evaluation was performed in an applicable area of the phantom depending on the type of device being tested. For devices held to the ear during normal operation, both the left and right ear positions were evaluated at the center frequency of the band at maximum power. The ear position that produced the greatest SAR determined which side of the phantom would be used for the entire evaluation. The positioning of the ear-held device relative to the phantom was dictated by FCC OET Bulletin 65 Supplement C.
(ii) For face-held and body-worn devices, or devices which can be operated within 20cm of the body, the planar section of the phantom was used. The type of device being evaluated determined the distance of the EUT to the outer surface of the planar phantom.
- b. The SAR was determined by a pre-defined procedure within the DASY3 software. Upon completion of a reference and optical surface check, the exposed region of the phantom was scanned near the inner surface with a grid spacing of 20mm x 20mm.
- c. For frequencies below 500MHz a 4x4x7 matrix was performed around the greatest spatial SAR distribution found during the area scan of the applicable exposed region. For frequencies above 500MHz a 5x5x7 matrix was performed. SAR values were then calculated using a 3-D spline interpolation algorithm and averaged over spatial volumes of 1 and 10 grams.
- d. If the EUT had any appreciable drift over the course of the evaluation, then the EUT was re-evaluated. Any unusual anomalies over the course of the test also warranted a re-evaluation.

7.0 SAR SAFETY LIMITS

| EXPOSURE LIMITS (General Population / Uncontrolled Exposure Environment) | SAR (W/Kg) |
|--|----------------------|
| Spatial Average (averaged over the whole body) | 0.08 |
| Spatial Peak (averaged over any 1g of tissue) | 1.60 |
| Spatial Peak (hands/wrists/feet/ankles averaged over 10g) | 4.00 |

- Notes: 1. The FCC SAR safety limits specified in the table above apply to devices operated in the General Population / Uncontrolled Exposure environment.
 2. Uncontrolled environments are defined as locations where there is exposure of individuals who have no knowledge or control of their exposure.

8.0 SYSTEM VALIDATION

Prior to the assessment, the system was verified in the planar region of the phantom. For devices operating below 1GHz, an 835MHz dipole or 900MHz was used, depending on the operating frequency of the EUT. For devices operating above 1GHz, an 1800MHz dipole was used. A forward power of 250mW was applied to the dipole and system was verified to a tolerance of $\pm 3\%$. Following the validation, the fluid remained or was changed depending on the particular part of the body being evaluated. The applicable verification(s) is/are as follows (see Appendix B for validation test plot):

| Dipole Validation Kit | Target SAR 1g (w/kg) | Measured SAR 1g (w/kg) |
|------------------------------|-----------------------------|-------------------------------|
| D835V2 | 2.06 | 2.03 |

9.0 SIMULATED TISSUES

The brain and muscle mixtures consist of a viscous gel using hydroxethylcellulose (HEC) gelling agent and saline solution. Preservation with a bactericide was added and visual inspection was made to ensure air bubbles are not trapped during the mixing process. The fluid was prepared according to standardized procedures and measured for dielectric parameters (permittivity and conductivity).

| INGREDIENT | MIXTURE (%) | |
|-------------|---------------|---------------------------|
| | 835MHz Muscle | 835MHz Brain (Validation) |
| Water | 52.4 | 40.1 |
| Sugar | 45.0 | 58.1 |
| Salt | 1.4 | 0.7 |
| HEC | 1.0 | 1.0 |
| Bactericide | 0.2 | 0.1 |

10.0 TISSUE PARAMETERS

The dielectric parameters of the fluids were verified prior to the SAR evaluation using an 85070C Dielectric Probe Kit and an 8753E Network Analyzer. The dielectric parameters of the fluid are as follows:

| Equivalent Tissue (835MHz) | Dielectric Constant ϵ_r | Conductivity s (mho/m) | r (Kg/m ³) |
|----------------------------|----------------------------------|--------------------------|--------------------------|
| Muscle | 56.1 ± 5% | 0.95 ± 10% | 1000 |
| Brain (Validation) | 44.2 ± 5% | 0.80 ± 10% | 1000 |

11.0 ROBOT SYSTEM SPECIFICATIONS

Specifications

POSITIONER: Stäubli Unimation Corp. Robot Model: RX60L
Repeatability: 0.02 mm
No. of axis: 6

Data Acquisition Electronic (DAE) System

Cell Controller

Processor: Pentium III
Clock Speed: 450 MHz
Operating System: Windows NT
Data Card: DASY3 PC-Board

Data Converter

Features: Signal Amplifier, multiplexer, A/D converter, and control logic
Software: DASY3 software
Connecting Lines: Optical downlink for data and status info.
Optical uplink for commands and clock

PC Interface Card

Function: 24 bit (64 MHz) DSP for real time processing
Link to DAE3
16 bit A/D converter for surface detection system
serial link to robot
direct emergency stop output for robot

E-Field Probe

Model: ET3DV6
Serial No.: 1387
Construction: Triangular core fiber optic detection system
Frequency: 10 MHz to 6 GHz
Linearity: ± 0.2 dB (30 MHz to 3 GHz)

Phantom

Phantom: Generic Twin
Shell Material: Fiberglass
Thickness: 2.0 ± 0.1 mm

12.0 TEST EQUIPMENT LIST

| SAR MEASUREMENT SYSTEM | | |
|--|--|--|
| <u>EQUIPMENT</u> | <u>SERIAL NO.</u> | <u>CALIBRATION DATE</u> |
| DASY3 System -Robot -ET3DV6 E-Field Probe -DAE -835MHz Validation Dipole -900MHz Validation Dipole -1800MHz Validation Dipole -Generic Twin Phantom V3.0 | 599396-01 1387 383 411 054 247 N/A | N/A Sept 1999 Sept 1999 Aug 1999 Aug 1999 Aug 1999 N/A |
| 85070C Dielectric Probe Kit | N/A | N/A |
| Gigatronics 8652A Power Meter -Power Sensor 80701A -Power Sensor 80701A | 1835272 1833535 1833542 | Oct 1999 Oct 1999 Oct 1999 |
| E4408B Spectrum Analyzer | US39240170 | Nov 1999 |
| 8594E Spectrum Analyzer | 3543A02721 | Mar 2000 |
| 8753E Network Analyzer | US38433013 | Nov 1999 |
| 8648D Signal Generator | 3847A00611 | N/A |
| 5S1G4 Amplifier Research Power Amplifier | 26235 | N/A |

13.0 MEASUREMENT UNCERTAINTIES

| Uncertainty Description | Error | Distribution | Weight | Standard Deviation | Offset |
|--|---------|--------------|--------|--------------------|--------|
| Probe Uncertainty | | | | | |
| Axial isotropy | ±0.2 dB | U-Shaped | 0.5 | ±2.4 % | |
| Spherical isotropy | ±0.4 dB | U-Shaped | 0.5 | ±4.8 % | |
| Isotropy from gradient | ±0.5 dB | U-Shaped | 0 | ± | |
| Spatial resolution | ±0.5 % | Normal | 1 | ±0.5 % | |
| Linearity error | ±0.2 dB | Rectangle | 1 | ±2.7 % | |
| Calibration error | ±3.3 % | Normal | 1 | ±3.3 % | |
| SAR Evaluation Uncertainty | | | | | |
| Data acquisition error | ±1 % | Rectangle | 1 | ±0.6 % | |
| ELF and RF disturbances | ±0.25 % | Normal | 1 | ±0.25 % | |
| Conductivity assessment | ±10 % | Rectangle | 1 | ±5.8 % | |
| Spatial Peak SAR Evaluation Uncertainty | | | | | |
| Extrapolated boundary effect | ±3 % | Normal | 1 | ±3 % | ±5 % |
| Probe positioning error | ±0.1 mm | Normal | 1 | ±1 % | |
| Integrated and cube orientation | ±3 % | Normal | 1 | ±3 % | |
| Cube Shape inaccuracies | ±2 % | Rectangle | 1 | ±1.2 % | |
| Device positioning | ±6 % | Normal | 1 | ±6 % | |
| Combined Uncertainties | | | | ±11.7 % | ±5 % |

Measurement uncertainties in SAR measurements are difficult to quantify due to several variables including biological, physiological, and environmental. However, the estimated measurement uncertainties in SAR are less than 15-25 %.

According to ANSI/IEEE C95.3, the overall uncertainties are difficult to assess and will vary with the type of meter and usage situation. However, accuracy's of ± 1 to 3 dB can be expected in practice, with greater uncertainties in near-field situations and at higher frequencies (shorter wavelengths), or areas where large reflecting objects are present. Under optimum measurement conditions, SAR measurement uncertainties of at least ± 2dB can be expected.

According to CENELEC, typical worst-case uncertainty of field measurements is ± 5 dB. For well-defined modulation characteristics the uncertainty can be reduced to ± 3 dB.

14.0 REFERENCES

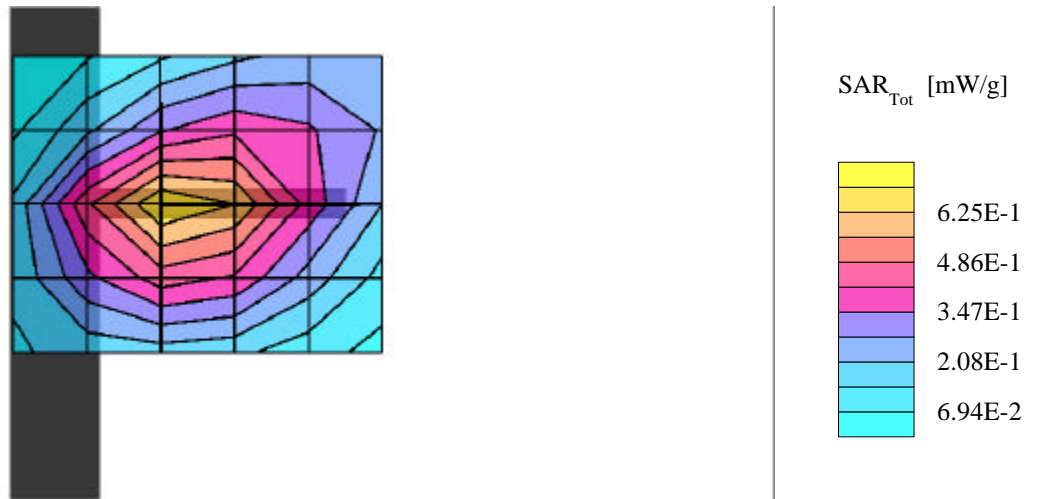
- (1) ANSI, *ANSI/IEEE C95.1: IEEE Standard for Safety Levels with Respect to Human Exposure to Radio Frequency Electromagnetic Fields, 3kHz to 300 Ghz*, The Institute of Electrical and Electronics Engineers, Inc., New York, NY 10017, 1992;
- (2) Federal Communications Commission, “Evaluating Compliance with FCC Guidelines for Human Exposure to Radio frequency Electromagnetic Fields”, OET Bulletin 65, FCC, Washington, D.C. 20554, 1997;
- (3) Thomas Schmid, Oliver Egger, and Neils Kuster, “Automated E-field scanning system for dosimetric assessments”, *IEEE Transaction on Microwave Theory and Techniques*, Vol. 44, pp. 105 – 113, January, 1996.
- (4) Niels Kuster, Ralph Kastle, and Thomas Schmid, “Dosimetric evaluation of mobile communications equipment with know precision”, *IEICE Transactions of Communications*, vol. E80-B, no. 5, pp. 645 – 652, May 1997.

APPENDIX A - SAR MEASUREMENT DATA

GTRAN Inc. FCC ID: PL5GCP-3000

Generic Twin Phantom; Flat Section; Position: (90°,90°)
Probe: ET3DV6 - SN1387; ConvF(6.43,6.43,6.43); Crest factor: 1.0
Muscle 835 MHz: $\sigma = 0.95$ mho/m $\epsilon_r = 56.1$ $\rho = 1.00$ g/cm³
Coarse: Dx = 15.0, Dy = 15.0, Dz = 10.0;
Cube 5x5x7
SAR (1g): 0.674 mW/g, SAR (10g): 0.421 mW/g

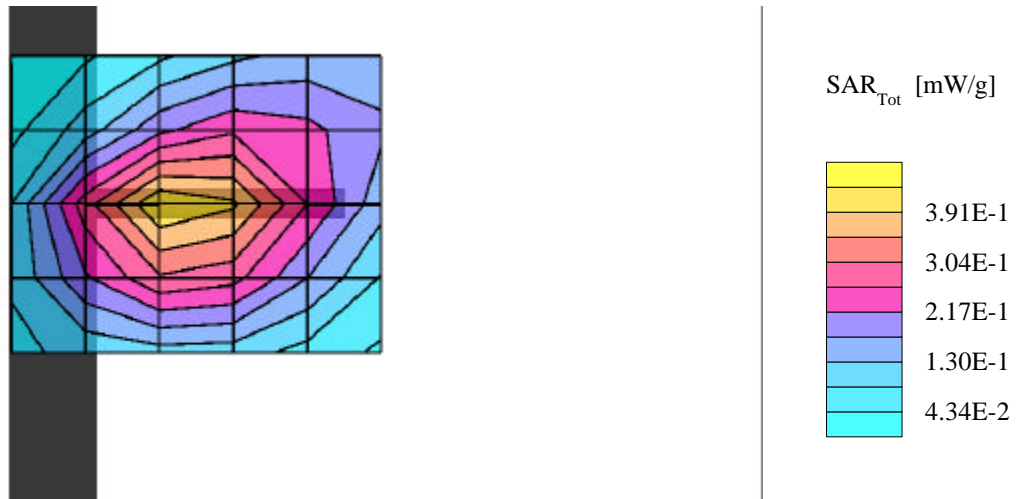
Body SAR with 1.0cm Separation Distance
PCMCIA Wireless Modem Card in Laptop PC
GTRAN Model: GCP-3000
CDMA Mode - Fixed Antenna
Channel 1013 [824.70 MHz]
Conducted Power: 25.5 dBm
Date Tested: June 14, 2001



GTRAN Inc. FCC ID: PL5GCP-3000

Generic Twin Phantom; Flat Section; Position: (90°,90°)
Probe: ET3DV6 - SN1387; ConvF(6.43,6.43,6.43); Crest factor: 1.0
Muscle 835 MHz: $\sigma = 0.95$ mho/m $\epsilon_r = 56.1$ $\rho = 1.00$ g/cm³
Coarse: Dx = 15.0, Dy = 15.0, Dz = 10.0;
Cube 5x5x7
SAR (1g): 0.443 mW/g, SAR (10g): 0.278 mW/g

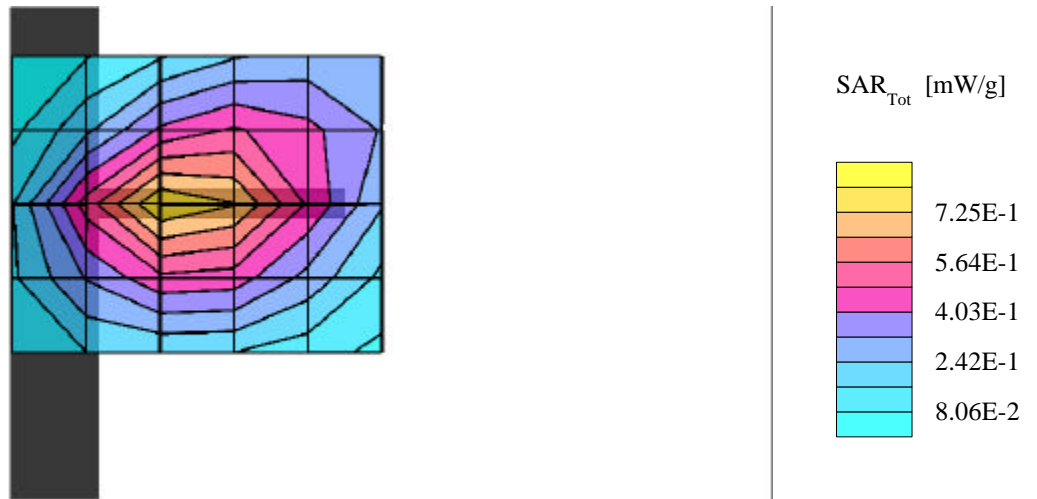
Body SAR with 1.0cm Separation Distance
PCMCIA Wireless Modem Card in Laptop PC
GTRAN Model: GCP-3000
CDMA Mode - Fixed Antenna
Channel 363 [835.89 MHz]
Conducted Power: 25.5 dBm
Date Tested: June 14, 2001



GTRAN Inc. FCC ID: PL5GCP-3000

Generic Twin Phantom; Flat Section; Position: (90°,90°)
Probe: ET3DV6 - SN1387; ConvF(6.43,6.43,6.43); Crest factor: 1.0
Muscle 835 MHz: $\sigma = 0.95$ mho/m $\epsilon_r = 56.1$ $\rho = 1.00$ g/cm³
Coarse: Dx = 15.0, Dy = 15.0, Dz = 10.0;
Cube 5x5x7
SAR (1g): 0.715 mW/g, SAR (10g): 0.453 mW/g

Body SAR with 1.0cm Separation Distance
PCMCIA Wireless Modem Card in Laptop PC
GTRAN Model: GCP-3000
CDMA Mode - Fixed Antenna
Channel 777 [848.31 MHz]
Conducted Power: 25.5 dBm
Date Tested: June 14, 2001

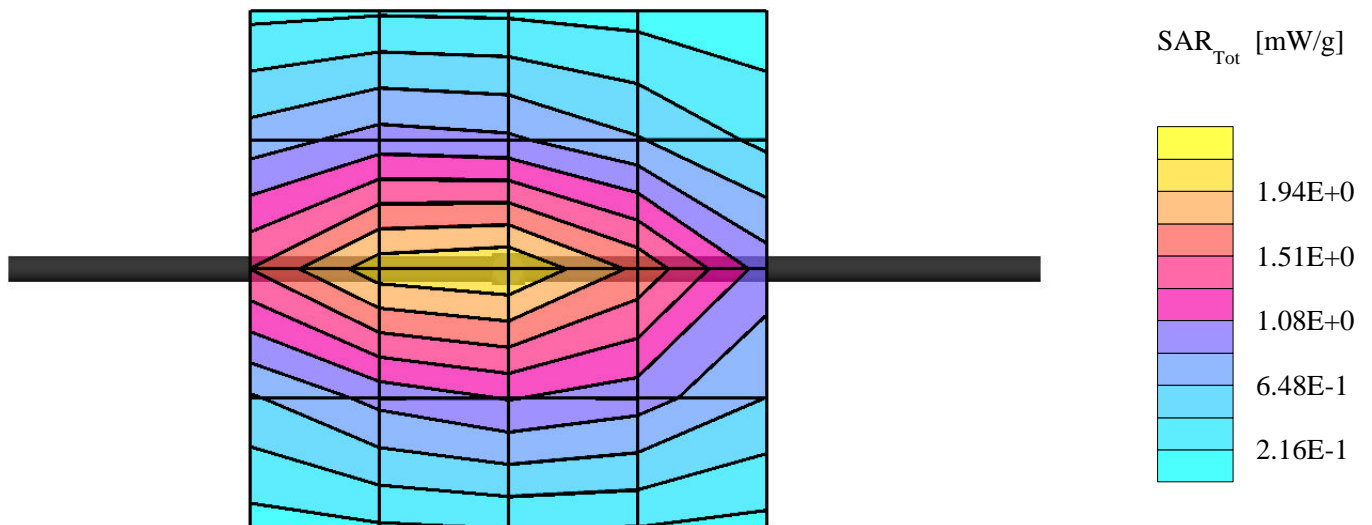


APPENDIX B - DIPOLE VALIDATION

Dipole 835 MHz

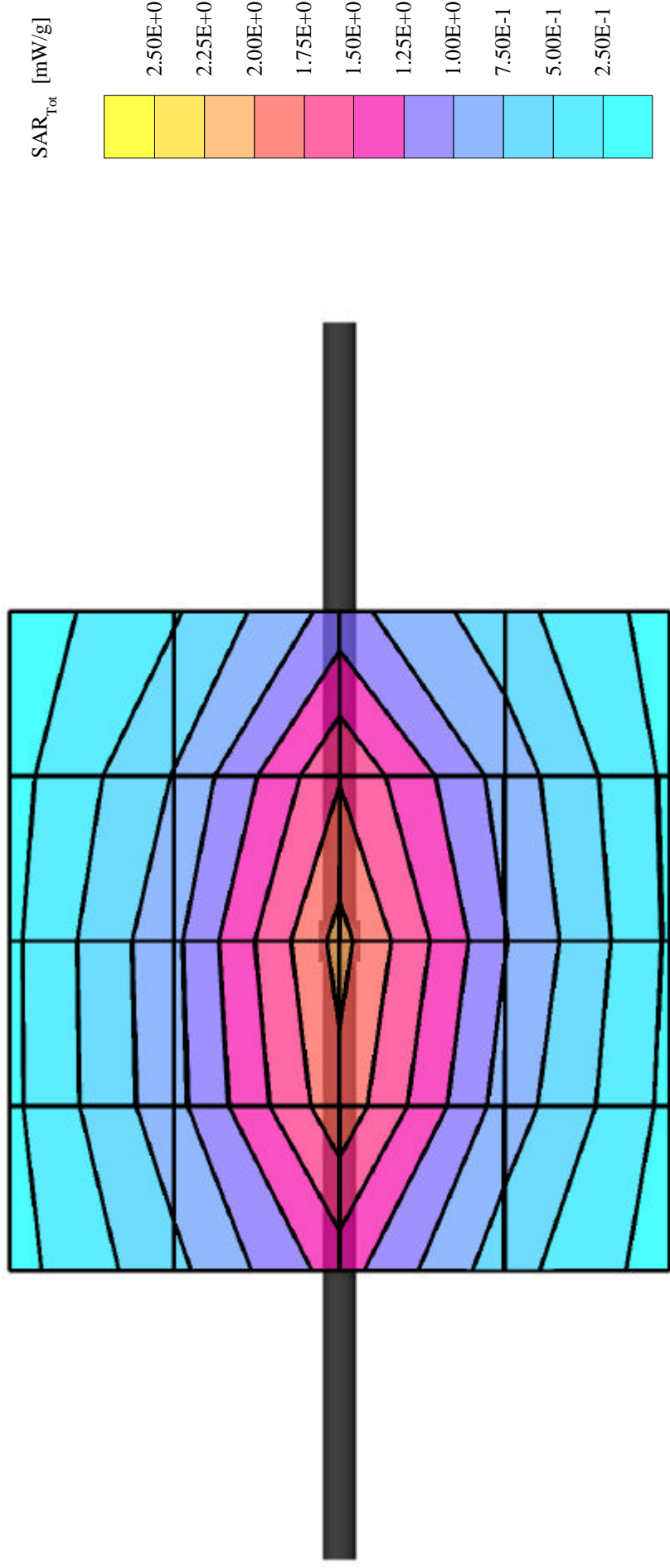
Generic Twin Phantom; Flat Section; Position: (90°,90°);
Probe: ET3DV6 - SN1387; ConvF(6.43,6.43,6.43); Crest factor: 1.0;
Brain 835 MHz: $\sigma = 0.80$ mho/m $\epsilon_r = 44.2$ $\rho = 1.00$ g/cm³
Coarse: Dx = 20.0, Dy = 20.0, Dz = 10.0
Cube 5x5x7
SAR (1g): 2.03 mW/g, SAR (10g): 1.34 mW/g

Validation Date: June 14, 2001



Validation Dipole D835V2 SN:411, d = 15mm

Frequency: 835 MHz; Antenna Input Power: 250 [mW]
Generic Twin Phantom; Flat Section; Grid Spacing: Dx = 20.0, Dy = 20.0, Dz = 10.0
Probe: ET3DV5 - SN1342/D4E3; ConvF(5.75,5.75,5.75); Brain 835 MHz: $\sigma = 0.80$ mho/m $\epsilon_r = 44.2$ $\rho = 1.00$ g/cm³
Cubes (2): Peak: 3.07 mW/g ± 0.05 dB, SAR (1g): 2.06 mW/g ± 0.05 dB, SAR (10g): 1.38 mW/g ± 0.05 dB, (Worst-case extrapolation)
Penetration depth: 13.6 (12.7, 14.8) [mm]
Powerdrift: -0.00 dB



APPENDIX C - PROBE CALIBRATION

Probe ET3DV6

SN:1387

| | |
|-------------------|--------------------|
| Manufactured: | September 21, 1999 |
| Last calibration: | September 22, 1999 |

Calibrated for System DASY3

DASY3 - Parameters of Probe: ET3DV6 SN:1387

Sensitivity in Free Space

| | |
|-------|---|
| NormX | 1.55 $\mu\text{V}/(\text{V}/\text{m})^2$ |
| NormY | 1.65 $\mu\text{V}/(\text{V}/\text{m})^2$ |
| NormZ | 1.64 $\mu\text{V}/(\text{V}/\text{m})^2$ |

Diode Compression

| | |
|-------|--------------|
| DCP X | 98 mV |
| DCP Y | 98 mV |
| DCP Z | 98 mV |

Sensitivity in Tissue Simulating Liquid

Brain **450 MHz** $\epsilon_r = 48 \pm 5\%$ $S = 0.50 \pm 10\%$ mho/m

| | | |
|---------|--------------------------|-------------------|
| ConvF X | 6.76 extrapolated | Boundary effect: |
| ConvF Y | 6.76 extrapolated | Alpha 0.30 |
| ConvF Z | 6.76 extrapolated | Depth 2.52 |

Brain **900 MHz** $\epsilon_r = 42.5 \pm 5\%$ $S = 0.86 \pm 10\%$ mho/m

| | | |
|---------|-----------------------------|-------------------|
| ConvF X | 6.34 $\pm 7\%$ (k=2) | Boundary effect: |
| ConvF Y | 6.34 $\pm 7\%$ (k=2) | Alpha 0.47 |
| ConvF Z | 6.34 $\pm 7\%$ (k=2) | Depth 2.25 |

Brain **1500 MHz** $\epsilon_r = 41 \pm 5\%$ $S = 1.32 \pm 10\%$ mho/m

| | | |
|---------|--------------------------|-------------------|
| ConvF X | 5.78 interpolated | Boundary effect: |
| ConvF Y | 5.78 interpolated | Alpha 0.69 |
| ConvF Z | 5.78 interpolated | Depth 1.88 |

Brain **1800 MHz** $\epsilon_r = 41 \pm 5\%$ $S = 1.69 \pm 10\%$ mho/m

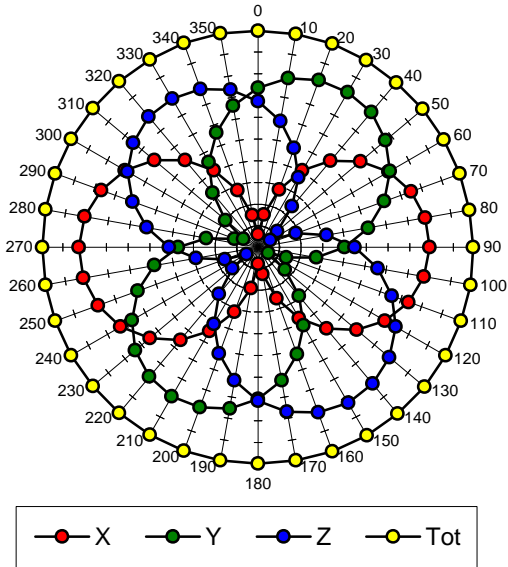
| | | |
|---------|-----------------------------|-------------------|
| ConvF X | 5.50 $\pm 7\%$ (k=2) | Boundary effect: |
| ConvF Y | 5.50 $\pm 7\%$ (k=2) | Alpha 0.81 |
| ConvF Z | 5.50 $\pm 7\%$ (k=2) | Depth 1.70 |

Sensor Offset

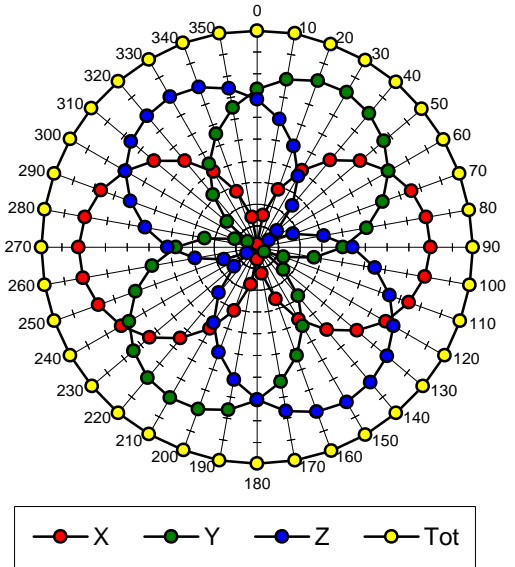
| | | |
|----------------------------|---------------------------------|----|
| Probe Tip to Sensor Center | 2.7 | mm |
| Optical Surface Detection | 1.6 \pm 0.2 | mm |

Receiving Pattern (f), q = 0°

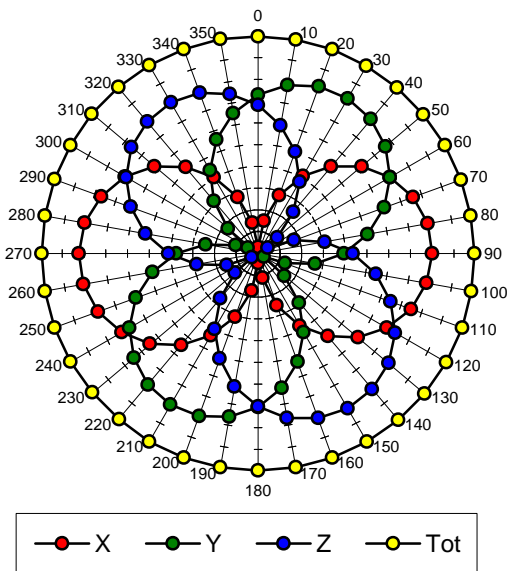
f = 30 MHz, TEM cell ifi110



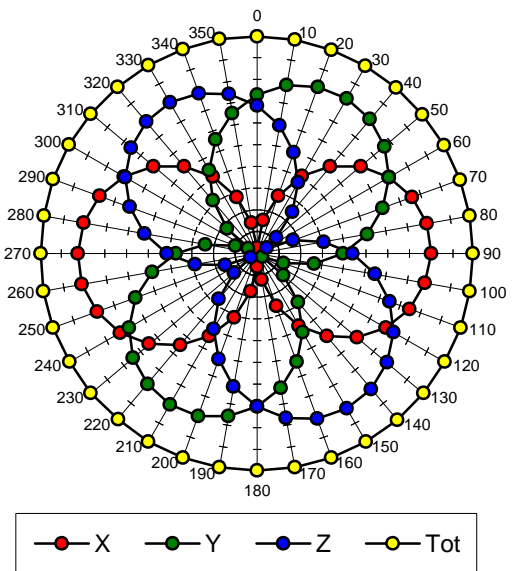
f = 100 MHz, TEM cell ifi110

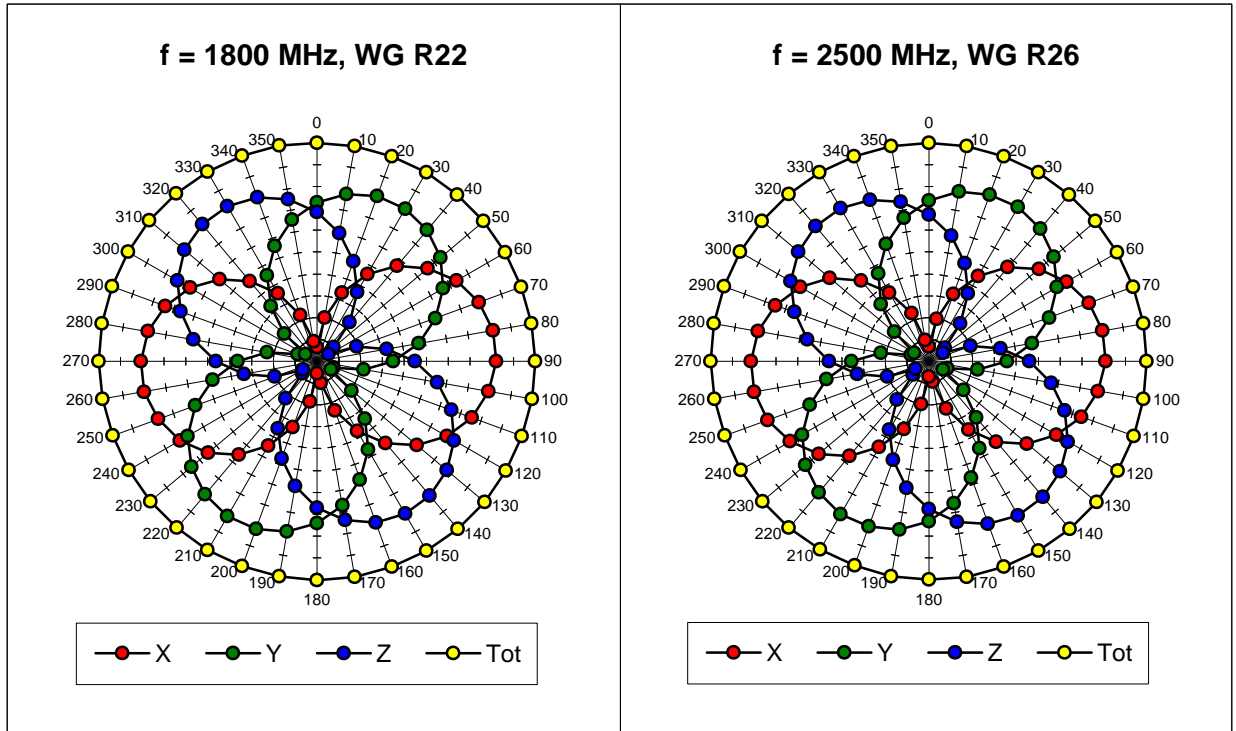


f = 300 MHz, TEM cell ifi110

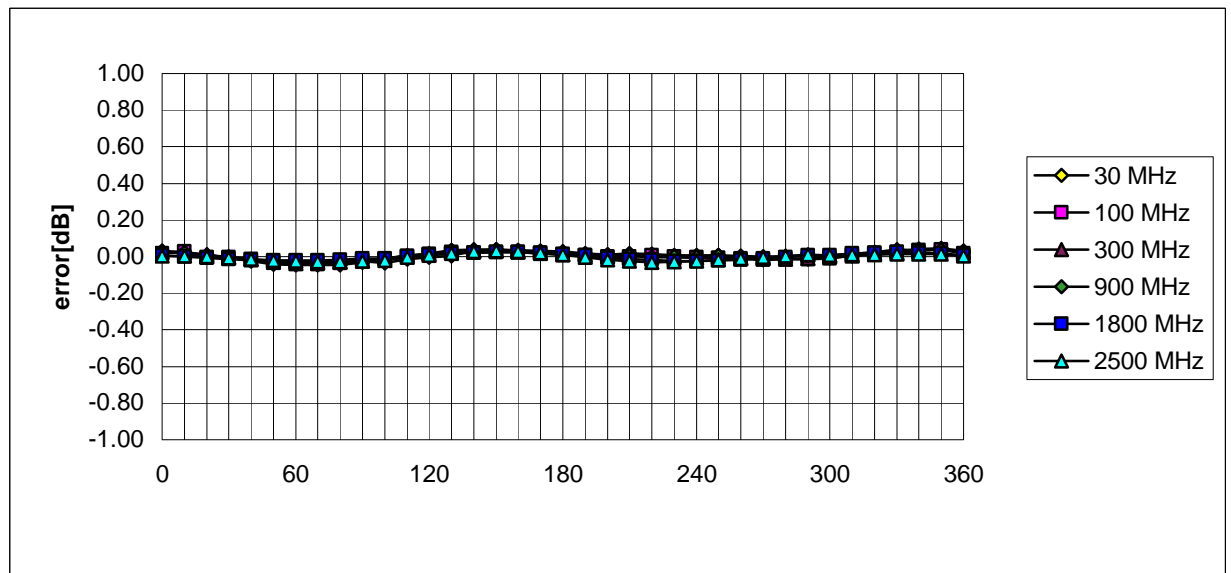


f = 900 MHz, TEM cell ifi110



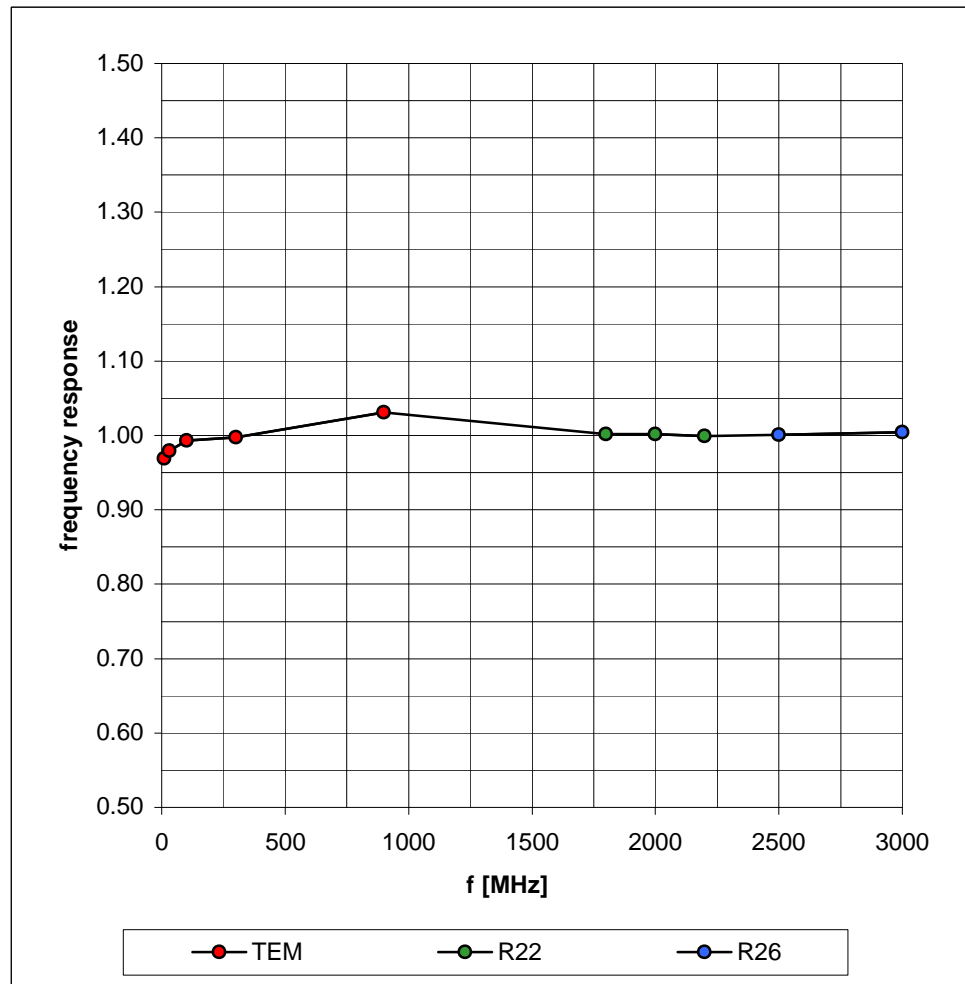


Isotropy Error (f), q = 0°

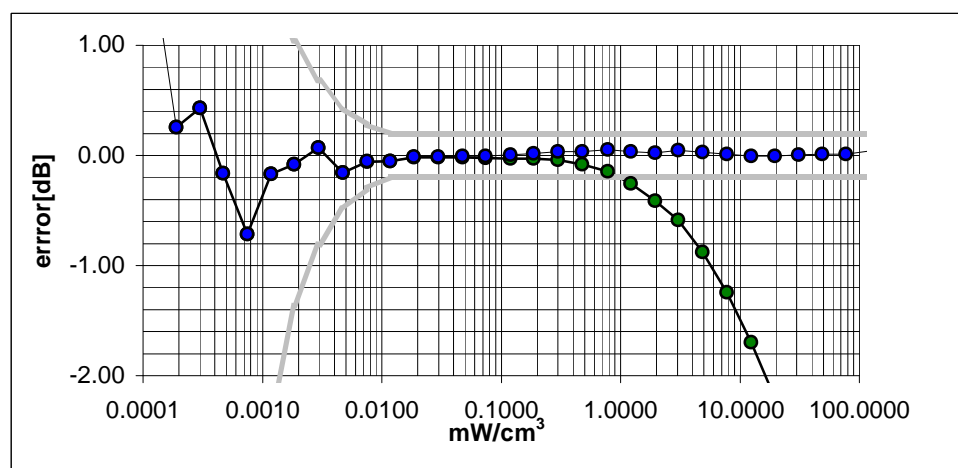
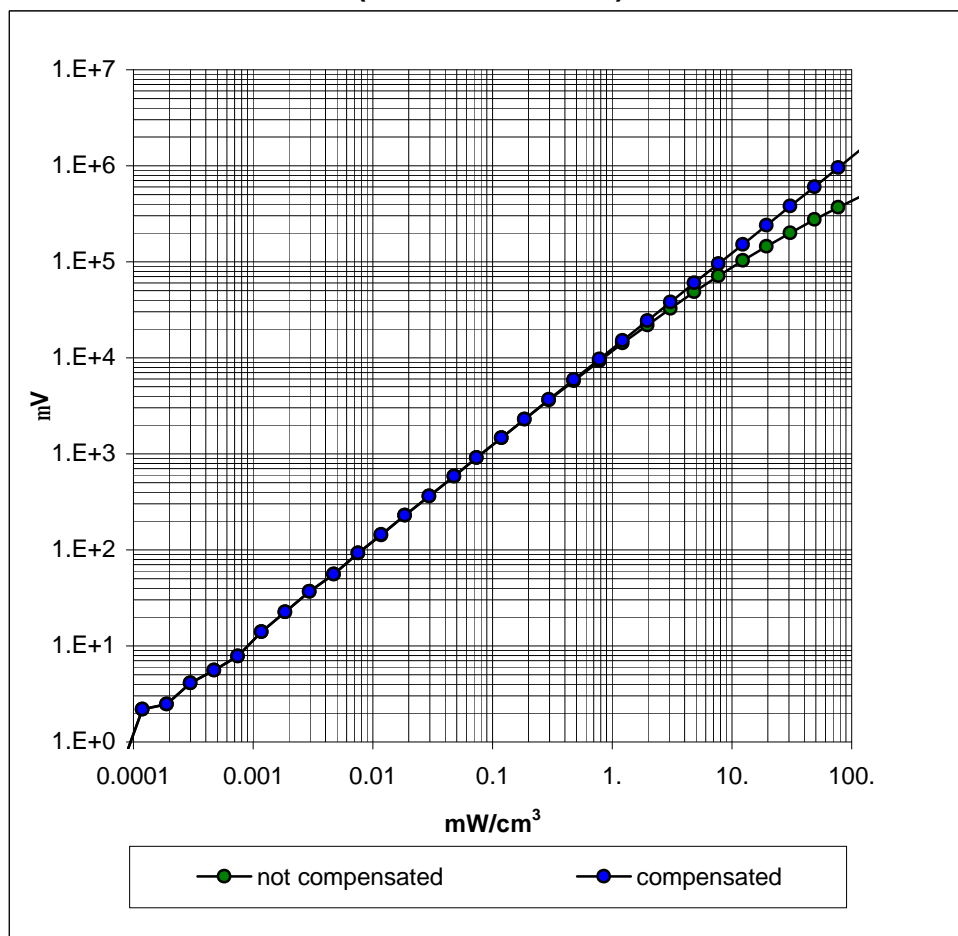


Frequency Response of E-Field

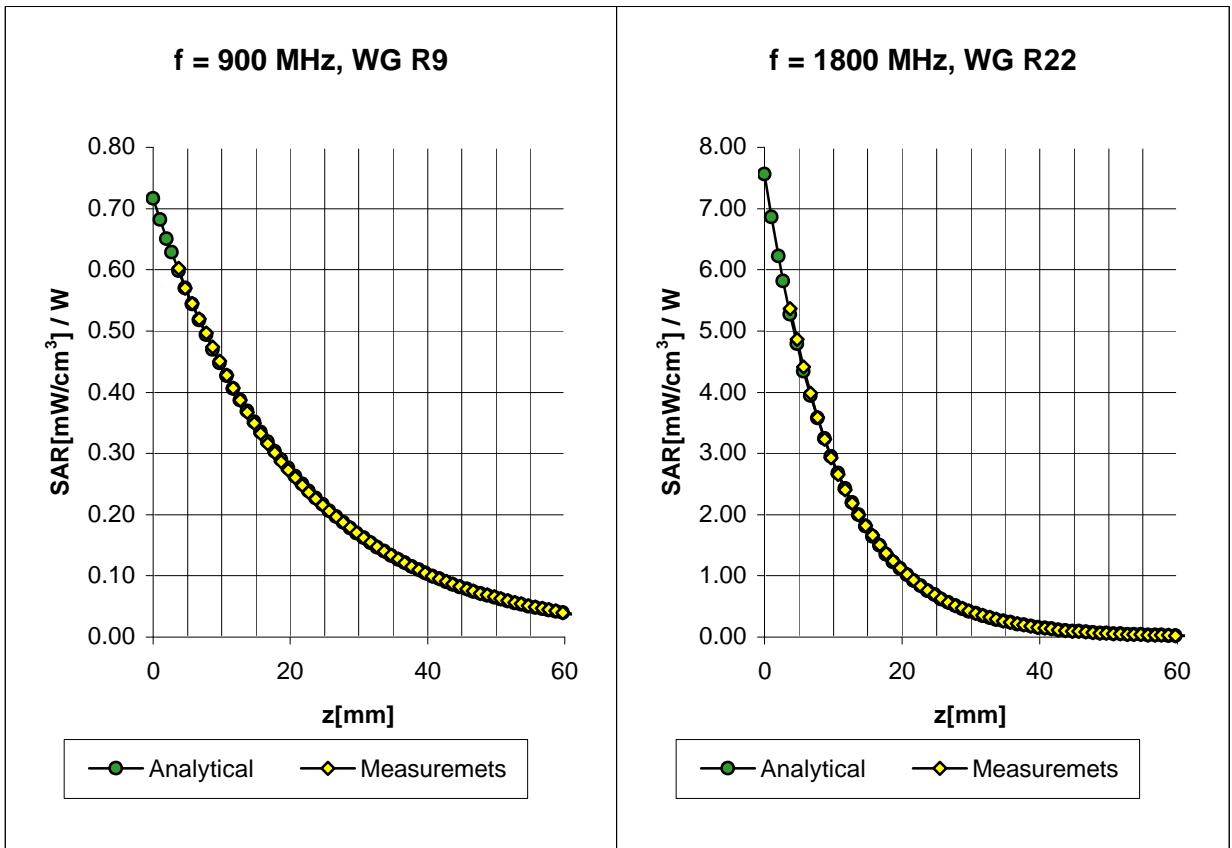
(TEM-Cell:ifi110, Waveguide R22, R26)



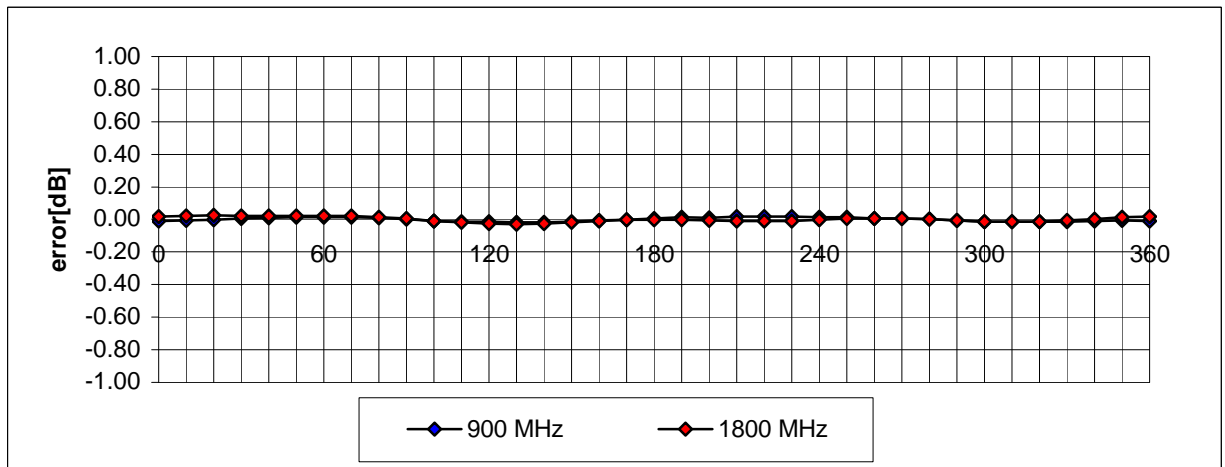
Dynamic Range f(SAR_{brain}) (TEM-Cell:ifi110)



Conversion Factor Assessment



Receiving Pattern (f) (in brain tissue, z = 5 mm)



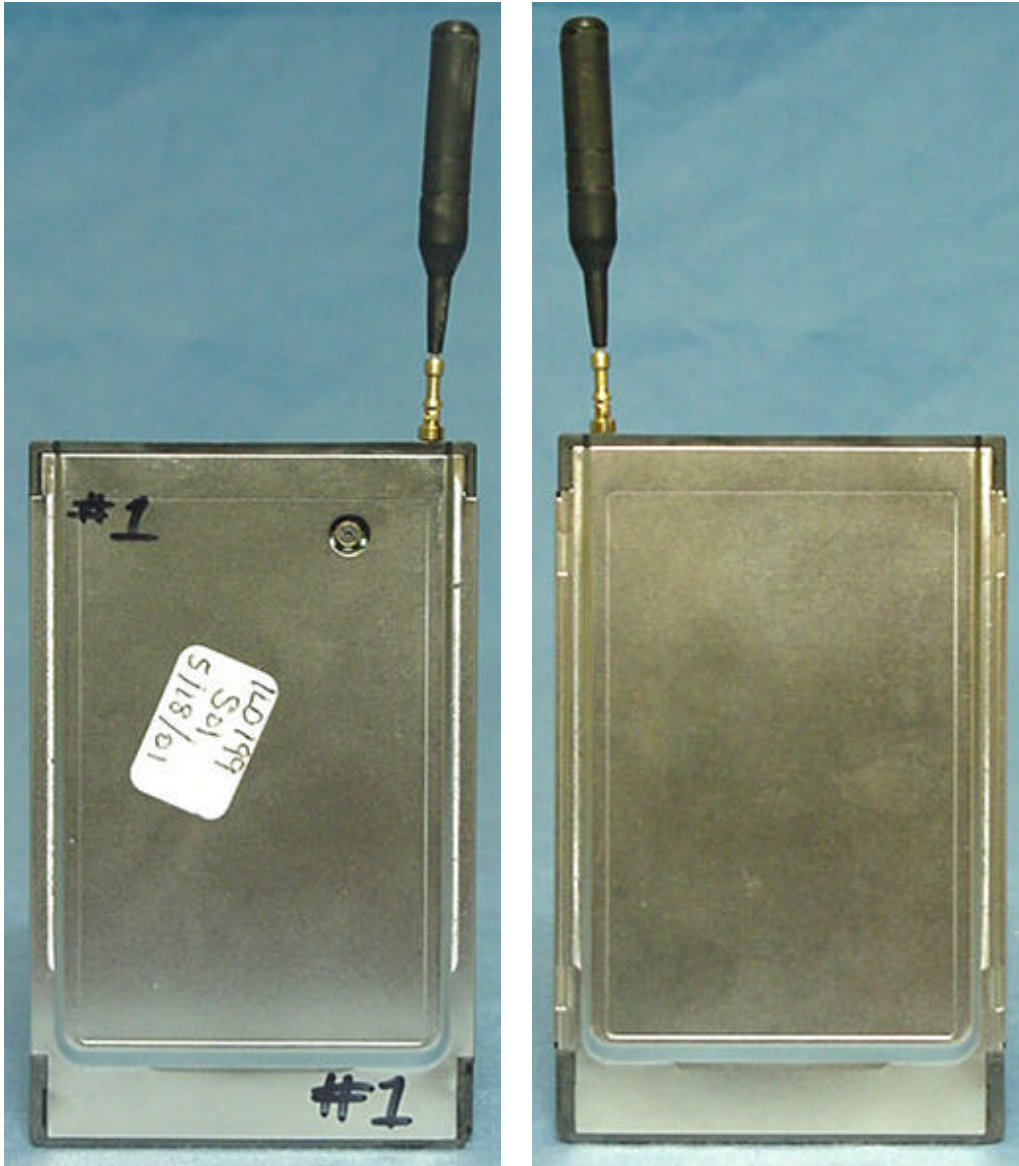
APPENDIX D - SAR TEST SETUP PHOTOGRAPHS

**BODY SAR TEST SETUP PHOTOGRAPHS
with 1.0cm Separation Distance**



APPENDIX E - EUT PHOTOGRAPHS

EUT PHOTOGRAPHS



EUT PHOTOGRAPHS



EUT PHOTOGRAPHS



EUT PHOTOGRAPHS

