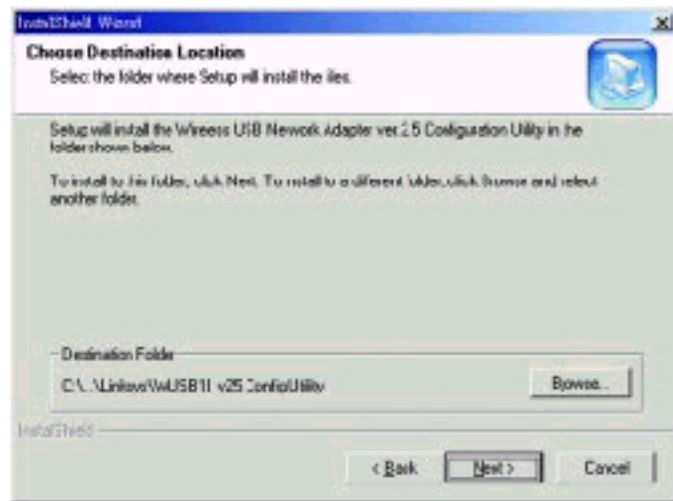
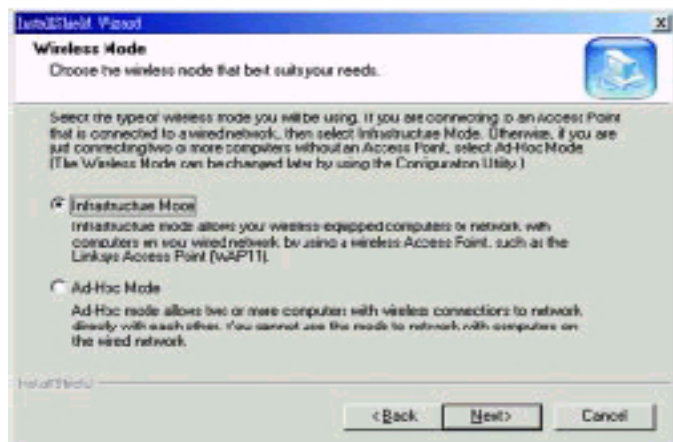


4. The InstallShield Wizard will automatically choose a folder where Setup will install files. Click the **Next** button.

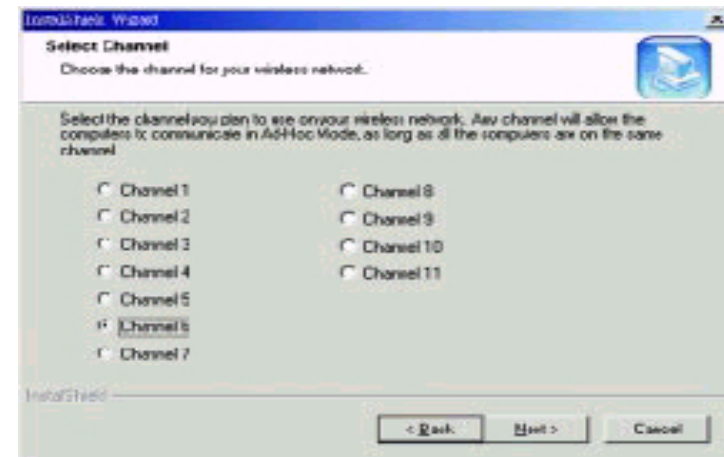


5. The InstallShield Wizard will ask you to choose a wireless mode. Choose the mode that applies to your network. **Ad-Hoc Mode** is used for simple peer-to-peer networking or sharing of local resources between wireless Networked PCs, and **Infrastructure Mode** allows a wireless network to be integrated into an existing, wired network through an access point, permitting roaming between access points while maintaining a connection to all network resources. Then, click the **Next** button.



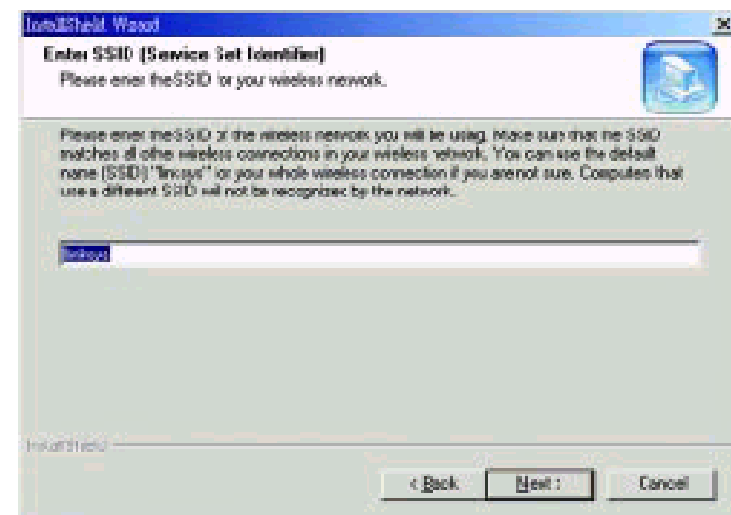
6. If you chose **Infrastructure Mode**, go on to Step 7 now. If you chose **Ad-Hoc Mode**, choose the correct operating channel that applies to your network.

The channel you choose should be set as the same as the other points in your wireless network. The default channel is set to Channel 6. Click **Next**.

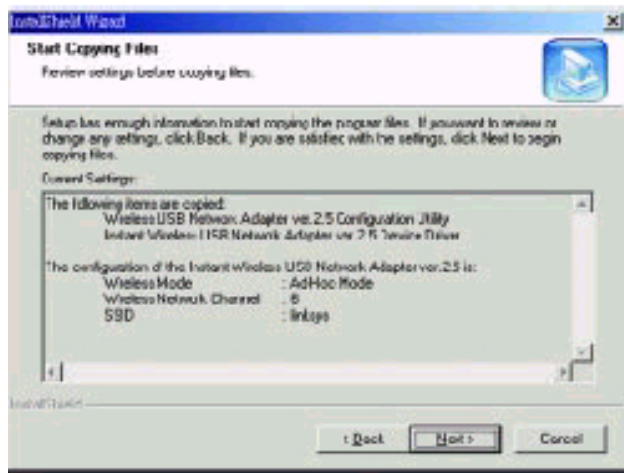


7. Enter in the name of your SSID for your Ad-Hoc or Infrastructure setting.

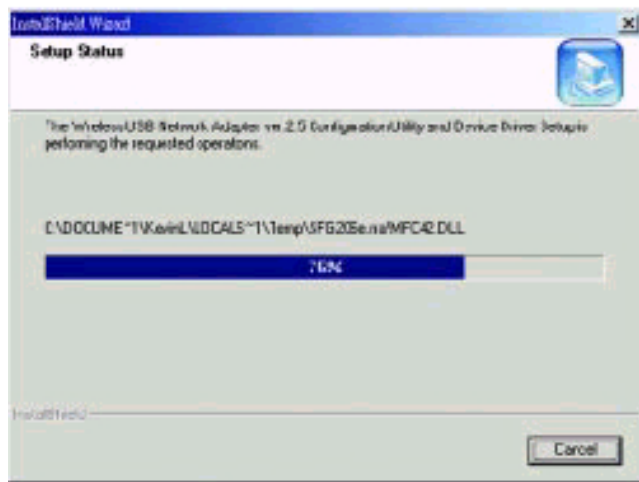
The SSID must be identical for all points in the network. To join any available SSID, type **ANY**. The default setting is **linksys** (all lowercase). Click **Next**.



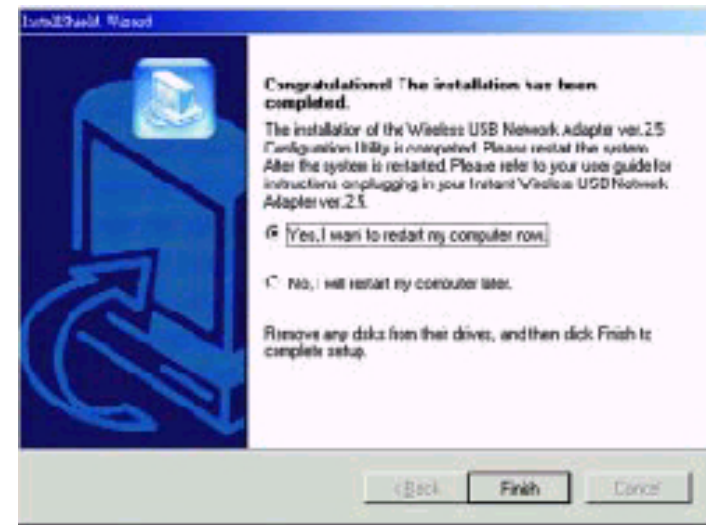
8. The Wizard will ask you to review your settings before starting to copy files. Select **Back** to review or change any settings, or select **Next** if you are satisfied with your settings.



9. The InstallShield Wizard will begin copying the files. The bar in the middle of the screen below shows the percentage of files copied.



10. Once the Wireless USB Network Adapter Configuration Utility has been successfully installed, the Wizard will ask you to restart your computer. Select **Yes, I want to restart my computer now**, and then click **Finish** to restart.



You have now completed the installation of your Wireless USB Network Adapter Configuration Utility. Please go on to the next page for information on Connecting the Wireless USB Network Adapter.

