

FCC PART 15 SUBPART C
EMI MEASUREMENT AND TEST REPORT
For
Shenzhen Jingneng Telecom Technology Co., Ltd.

Baimenqian Industrial Zone, Shawan, Buji Town,
Longgang District, Shenzhen City, P.R.China

FCC ID: PJU2410-1

February 5, 2003

This Report Concerns: <input checked="" type="checkbox"/> Original Report	Equipment Type: Cordless Telephone
Test Engineer: Benjamin Jing	
Report No.: R0301217	
Test Date: January 23, 2003	
Reviewed By: Hans Mellberg	
Prepared By: Bay Area Compliance Laboratory Corporation 230 Commercial Street Sunnyvale, CA 94085 Tel (408) 732-9162 Fax (408) 732-9164	

Note: This test report is specially limited to the above client company and the product model only. It may not be duplicated without prior written consent of Bay Area Compliance Laboratory Corporation. This report **must not** be used by the client to claim product endorsement by NVLAP or any agency of the U.S. Government.

TABLE OF CONTENTS

1 - GENERAL INFORMATION.....	3
1.1 PRODUCT DESCRIPTION FOR EQUIPMENT UNDER TEST (EUT).....	3
1.2 OBJECTIVE	3
1.3 RELATED SUBMITTAL(S)/GRANT(S).....	3
1.4 TEST METHODOLOGY	3
1.5 TEST FACILITY	3
1.6 TEST EQUIPMENT LIST	4
1.8 LOCAL SUPPORT EQUIPMENT LIST AND DETAILS.....	4
1.9 EXTERNAL I/O CABLING LIST AND DETAILS	4
2 - SYSTEM TEST CONFIGURATION.....	5
2.1 DESCRIPTION OF TEST CONFIGURATION.....	5
2.2 CONFIGURATION OF TEST SYSTEM (BASE)	6
2.3 TEST SETUP BLOCK DIAGRAM	6
3 - CONDUCTED EMISSION.....	7
3.1 MEASUREMENT UNCERTAINTY	7
3.2 EUT SETUP	7
3.3 SPECTRUM ANALYZER SETUP	7
3.4 TEST PROCEDURE	7
3.5 SUMMARY OF TEST RESULTS.....	8
3.6 CONDUCTED EMISSIONS TEST DATA.....	8
3.7 PLOT OF CONDUCTED EMISSIONS TEST DATA.....	8
4 - RADIATED EMISSION.....	11
4.1 MEASUREMENT UNCERTAINTY	11
4.2 EUT SETUP	11
4.3 SPECTRUM ANALYZER SETUP	11
4.4 TEST PROCEDURE	12
4.5 CORRECTED AMPLITUDE & MARGIN CALCULATION	12
4.6 SUMMARY OF TEST RESULTS.....	12
4.7 RADIATED EMISSIONS TEST RESULT DATA	13
5 - BAND EDGES	15
5.1 TEST PROCEDURE	15
5.2 TEST EQUIPMENT	15
5.3 TEST RESULTS.....	15

1 - GENERAL INFORMATION

1.1 Product Description for Equipment Under Test (EUT)

The *Shenzhen Jingneng Telecom Technology Co., Ltd.*'s CTP9410 / GH2410 or the "EUT" as referred to in this report is a cordless telephone. EUT was composed of two parts, one is a Handset which is measured approximately 8.0" L x 1.8" W x 1.2"H, and the other is a Base which measures about 7.8"L x 5.5"W x 4.2"H.

The EUT was supplied with TF power adapter, M/N: TF-9300.

** The test data was good for test sample only. It may have deviation for other test samples.*

1.2 Objective

This document is a qualification test report based on the Electromagnetic Interference (EMI) tests performed on the EUT. The EMI measurements were performed according to the measurement procedure described in ANSI C63.4-1992.

The tests were performed in order to determine whether the electromagnetic emissions from the equipment under test, referred to as EUT hereafter, are within the specification limits defined by FCC Title 47, Part 15, Subpart C, section 15.205, 15.207, and 15.249.

1.3 Related Submittal(s)/Grant(s)

No Related Submittals

1.4 Test Methodology

All measurements contained in this report were conducted with ANSI C63.4-1992, American National Standard for Methods of Measurement of Radio-Noise Emissions from Low-Voltage Electrical and Electronic Equipment in the range of 9 kHz to 40 GHz.

All radiated and conducted emissions measurement was performed at Bay Area Compliance Laboratory, Corp. The radiated testing was performed at an antenna-to-EUT distance of 3 meters.

1.5 Test Facility

The Open Area Test site used by Bay Area Compliance Laboratory Corporation to collect radiated and conducted emission measurement data is located in the back parking lot of the building at 230 Commercial Street, Sunnyvale, California, USA.

Test site at Bay Area Compliance Laboratory Corporation has been fully described in reports submitted to the Federal Communication Commission (FCC) and Voluntary Control Council for Interference (VCCI). The details of these reports has been found to be in compliance with the requirements of Section 2.948 of the FCC Rules on February 11 and December 10, 1997 and Article 8 of the VCCI regulations on December 25, 1997. The facility also complies with the radiated and AC line conducted test site criteria set forth in ANSI C63.4-1992.

The Federal Communications Commission and Voluntary Control Council for Interference has the reports on file and is listed under FCC file 31040/SIT 1300F2 and VCCI Registration No.: C-1298 and R-1234. The test site has been approved by the FCC and VCCI for public use and is listed in the FCC Public Access Link (PAL) database.

Additionally, Bay Area Compliance Laboratory Corporation is a National Institute of Standards and Technology (NIST) accredited laboratory, under the National Voluntary Laboratory Accredited Program (NVLAP). The scope of the accreditation covers the FCC Method - 47 CFR Part 15 - Digital Devices, CISPR 22: 1997, and AS/NZS 3548: Electromagnetic Interference - Limits and Methods of Measurement of Information Technology Equipment test methods under NVLAP Lab Code 200167-0.

1.6 Test Equipment List

Manufacturer	Description	Model	Serial Number	Cal. Due Data
HP	Spectrum Analyzer	8564E	08303	12/6/2003
HP	Spectrum Analyzer	8593B	2919A00242	12/20/2003
HP	Amplifier	8349B	2644A02662	12/20/2003
HP	Quasi-Peak Adapter	85650A	917059	12/6/2003
HP	Amplifier	8447E	1937A01046	12/6/2003
A.H. System	Horn Antenna	SAS0200/571	261	12/27/2003
Com-Power	Log Periodic Antenna	AL-100	16005	11/2/2003
Com-Power	Biconical Antenna	AB-100	14012	11/2/2003
Solar Electronics	LISN	8012-50-R-24-BNC	968447	12/28/2003
Com-Power	LISN	LI-200	12208	12/20/2003
Com-Power	LISN	LI-200	12005	12/20/2003
BACL	Data Entry Software	DES1	0001	12/20/2003

***Statement of Traceability: Bay Area Compliance Laboratory Corp.** Certifies that all calibration has been performed using suitable standards traceable to the NATIONAL INSTITUTE of STANDARDS and TECHNOLOGY.

1.8 Local Support Equipment List and Details

Manufacturer	Description	Model	Serial Number	FCC ID
TELTONE CORP.	Simulator	TLS-3B-01	80071	DOC
South Telecom	Telephone	N/A	N/A	DOC

1.9 External I/O Cabling List and Details

Cable Description	Length (M)	Port/From	To
Unshielded RJ 11 telephone cable	2.0	Simulator RJ 11 Port	EUT
Unshielded RJ 11 telephone cable	2.0	Simulator RJ 11 Port	Telephone

2 - SYSTEM TEST CONFIGURATION

2.1 Description of Test Configuration

The EUT was configured for testing in a typical fashion (as normally used by a typical user).

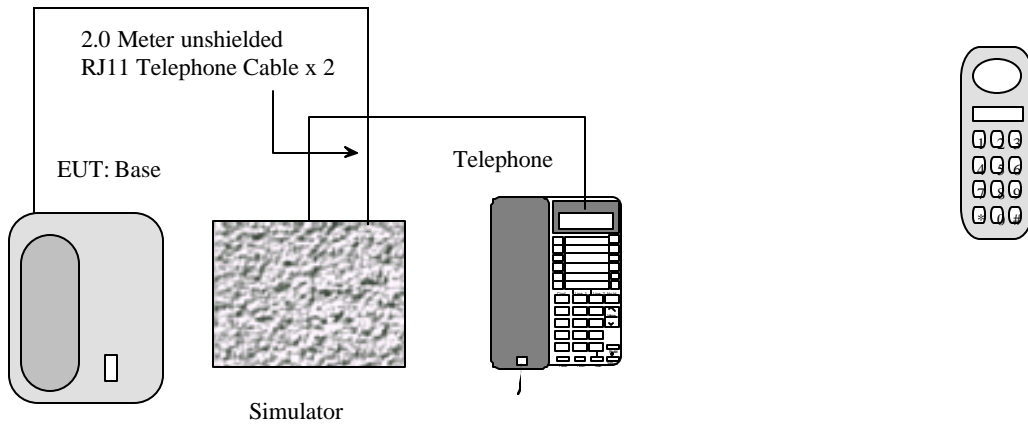
Handset being tested: The Handset unit was placed on the wooden table and tested in three orthogonal axis. The handset was connected to the headset via its headset port. The Low and high channels were tested. The handset was transmitting to and receiving from the Base unit. The EUT was investigated for emissions while off hook. The radiated data was taken in this mode of operation. All initial and final investigations were performed with the EMI receiver in manual mode scanning the frequency range continuously. The cables were bundled and routed as shown in the 2.3.

Base being tested: The Base unit was placed on the wooden table. The Low and high channels were tested. The base was connected to the line simulator and an AC adapter via its Tel Line and power ports, respectively. The base was transmitting and receiving from the Handset. The conducted as well as radiated data was taken in this mode of operation. All initial and final investigations were performed with the EMI receiver in manual mode scanning the frequency range continuously. The cables were bundled and routed as shown in the 2.3.

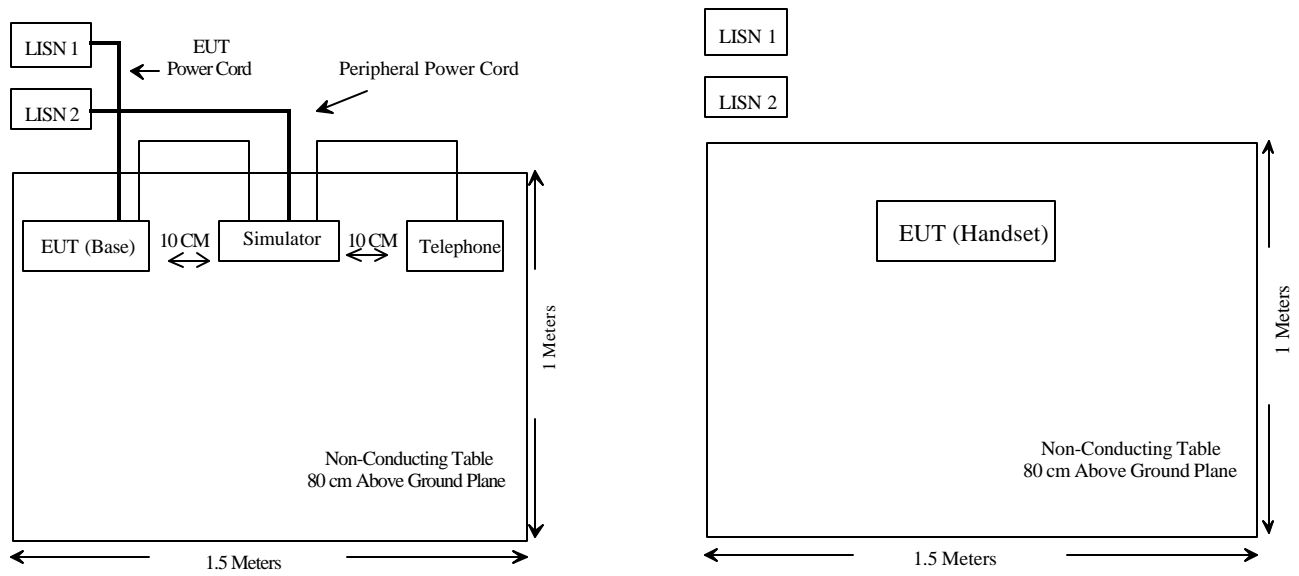
2.2 Configuration of Test System (Base)

Base

Handset



2.3 Test Setup Block Diagram



3 - CONDUCTED EMISSION

3.1 Measurement Uncertainty

All measurements involve certain levels of uncertainties, especially in field of EMC. The factors contributing to uncertainties are spectrum analyzer, cable loss, and LISN.

Based on NIS 81, The Treatment of Uncertainty in EMC Measurements, the best estimate of the uncertainty of any conducted emissions measurement at BAACL is ± 2.4 dB.

3.2 EUT Setup

The measurement was performed at the **Open Area Test Site**, using the same setup per ANSI C63.4-1992 measurement procedure. Specification used was with the FCC Class B limits.

The Base unit of EUT was connected to a 120Vac/60Hz power source and it was placed center and the back edge of the test table. The simulator was placed on one side of the EUT base, and the telephone was placed on the other side the EUT base. The rear of the EUT and peripherals were placed flushed with the rear of the tabletop.

The spacing between the peripherals was 10 centimeters.

External I/O cables were draped over edge of the test table and bundle when necessary.

3.3 Spectrum Analyzer Setup

The spectrum analyzer was set with the following configurations during the conducted emission test:

Start Frequency	150 kHz
Stop Frequency	30 MHz
Sweep Speed.....	Auto
IF Bandwidth.....	10 kHz
Video Bandwidth	10 kHz
Quasi-Peak Adapter Bandwidth.....	9 kHz
Quasi-Peak Adapter Mode.....	Normal

3.4 Test Procedure

During the conducted emission test, the EUT power cord was connected to the auxiliary outlet of the first LISN with all support equipment power cords connected to the second.

The worst-case result was recorded in the table listed under section 3.6 of this report.

Maximizing procedure was performed on the six (6) highest emissions to ensure EUT compliance using all installation combination. All data was recorded in the peak detection mode. Quasi-peak readings were only performed when an emission was found to be marginal (within -4 dB of specification limit). Quasi-peak readings are distinguished with a "Qp".

3.5 Summary of Test Results

According to the data in section 3.6, the EUT complied with the FCC Conducted margin for a Class B device and these test results is deemed satisfactory evidence of compliance with RSS-210 of the Canadian Interference-Causing Equipment Regulations, with the *worst* margin reading of:

-6.1 dB μ V at 2.050 MHz in the Neutral mode

3.6 Conducted Emissions Test Data

Frequency MHz	LINE CONDUCTED EMISSIONS			FCC CLASS B	
	Amplitude dB μ V	Detector Qp/Ave/Peak	Phase Line/Neutral	Limit dB μ V	Margin dB
2.050	49.9	QP	Neutral	56	-6.1
0.150	54.8	QP	Line	66	-11.2
2.420	43.1	QP	Line	56	-12.9
0.300	44.5	QP	Line	60	-15.5
0.280	44.2	QP	Neutral	60	-15.8
0.150	39.9	Ave	Line	56	-16.1
0.150	48.7	QP	Neutral	66	-17.3
2.050	28.5	Ave	Neutral	46	-17.5
0.150	37.6	Ave	Neutral	56	-18.4
0.280	27.3	Ave	Neutral	50	-22.7
0.300	26.8	Ave	Line	50	-23.2
2.420	21.2	Ave	Line	46	-24.8

3.7 Plot of Conducted Emissions Test Data

Plot of Conducted Emissions test data is presented hereinafter as reference.

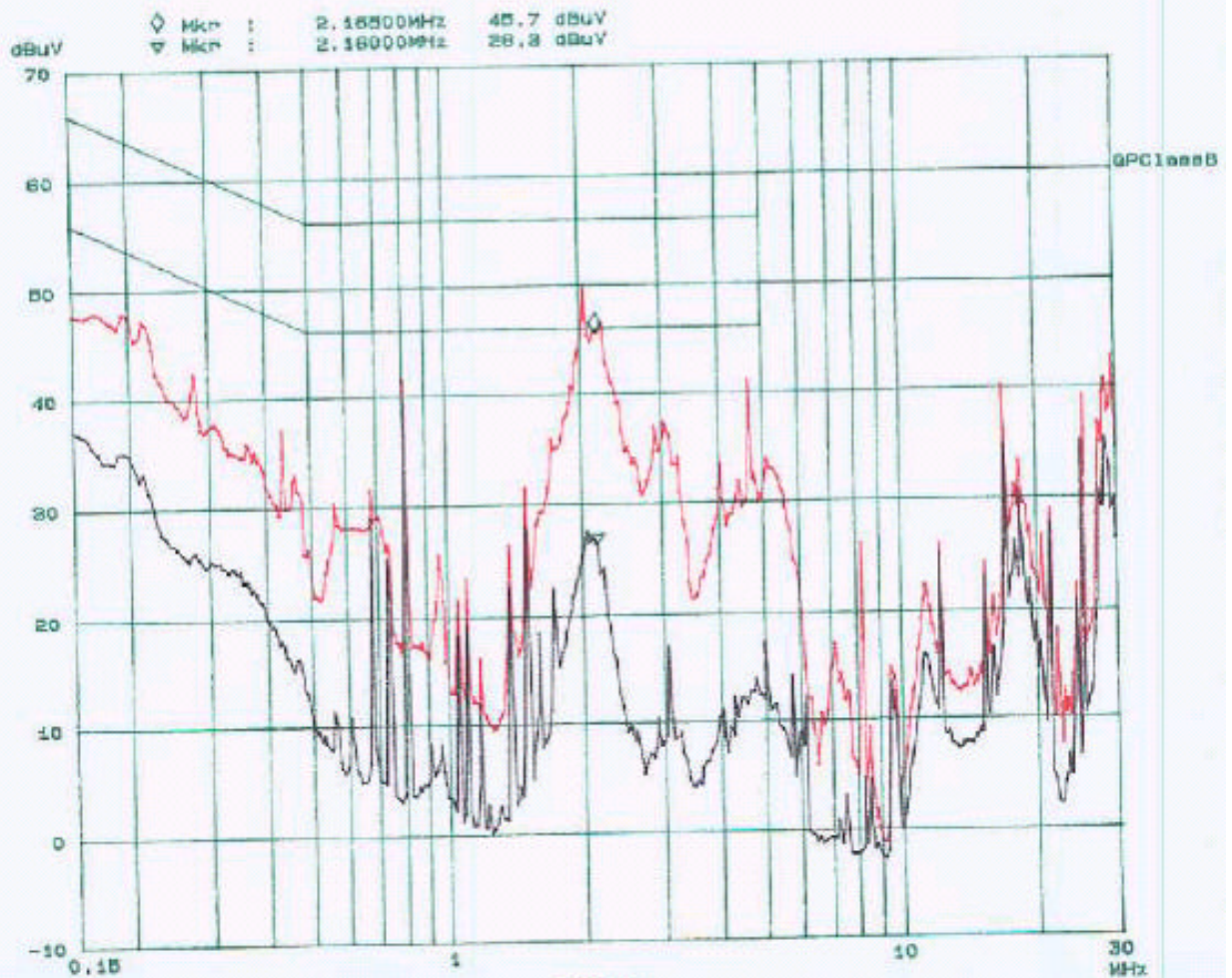
Bay Area Compliance Corporation
 CISPR CLASS B

17. Apr 88 17:38

EUT: CTP8410 GH2410
 Manuf: Jingneng
 Op Cond: Normal
 Operator: Benjamin
 Comment: NEUTRAL
 File name: Jingneng.RES

Scan Settings (1 Range)			Receiver Settings				
Start	Stop	Step	IF BW	Detector	M-Time	Atten	Preamp
180k	30M	5k	9k	QP+AV	20ms	10dB	OFF

Final Measurement: x QP / + AV
 Meas Time: 1 s
 Subrange: 25
 Acc Margin: 6dB

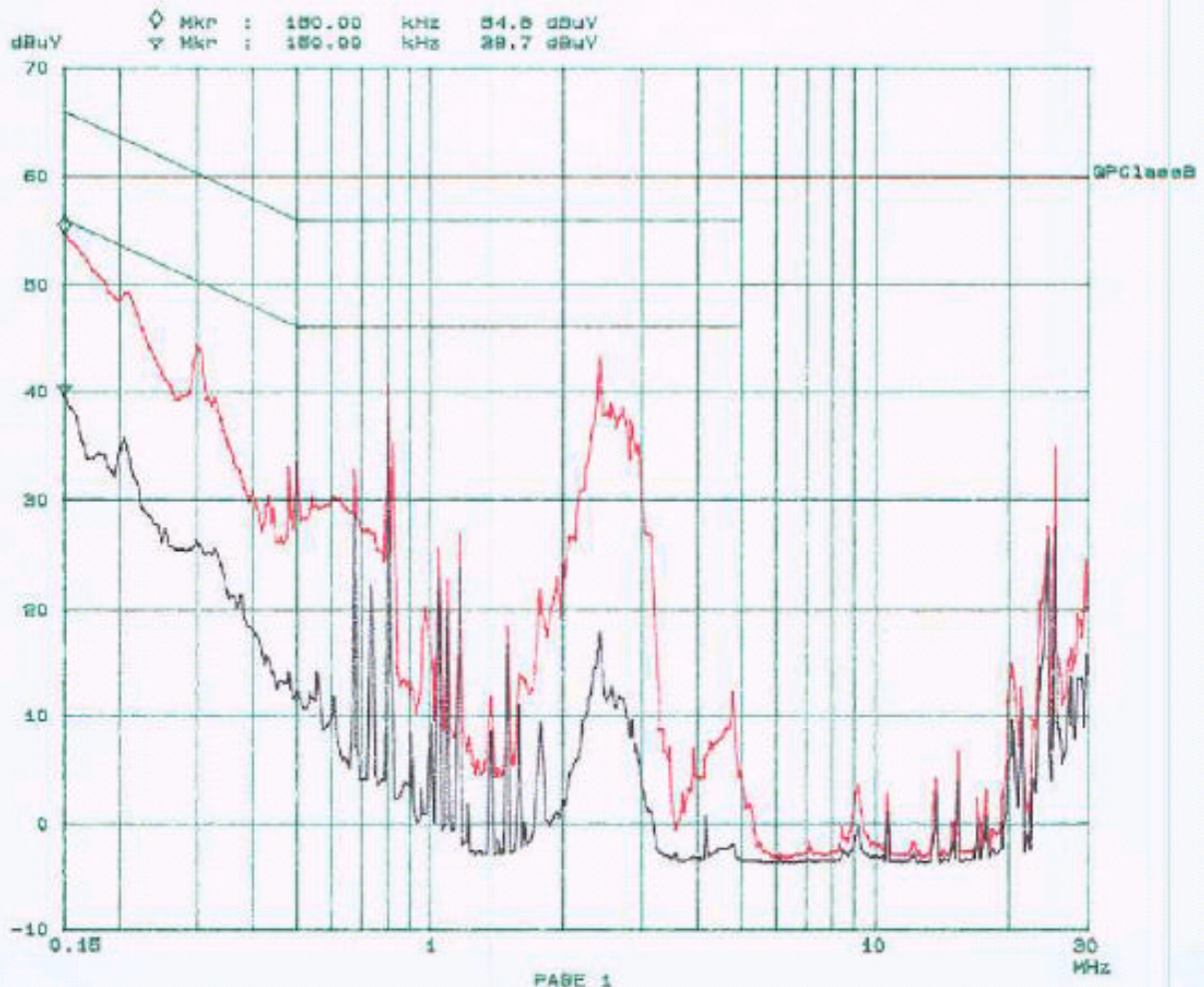


Bay Area Compliance Corporation CISPR CLASS B

2014-09-23 14:27

EUT: GTPB410 BH2410
Manuf: Jingneng
Op Cond: Normal
Operator: Benjamin
Comment: NEUTRAL

Scan Settings (1 Range)			Receiver Settings				
Start	Stop	Step	IF BW	Detector	M-Time	Atten	Preamp
150k	30M	5K	9K	QP+AV	20ms	10dB LN	OFF



4 - RADIATED EMISSION

4.1 Measurement Uncertainty

All measurements involve certain levels of uncertainties, especially in field of EMC. The factors contributing to uncertainties are spectrum analyzer, cable loss, antenna factor calibration, antenna directivity, antenna factor variation with height, antenna phase center variation, antenna factor frequency interpolation, measurement distance variation, site imperfections, mismatch (average), and system repeatability.

Based on NIS 81, The Treatment of Uncertainty in EMC Measurements, the best estimate of the uncertainty of a radiation emissions measurement at BAEL is ± 4.0 dB.

4.2 EUT Setup

The radiated emission tests were performed in the open area 3-meter test site, using the setup in accordance with the ANSI C63.4-1992. The specification used was the FCC 15 Subpart C limits.

The Base of EUT was connected to a 120Vac/60Hz power source and it was placed center and the back edge of the test table. The simulator was placed on one side of the EUT base, and the telephone was placed on the other side the EUT base. The rear of the EUT and peripherals were placed flushed with the rear of the tabletop.

The spacing between the peripherals was 10 centimeters.

The external Input / Output cables were draped over edge of the test table and bundle when necessary.

4.3 Spectrum Analyzer Setup

According to FCC Rules, 47 CFR 15.33 (a) (1), the system was tested to 25GHz.

During the radiated emission test, the spectrum analyzer was set with the following configurations:

Start Frequency	30 MHz
Stop Frequency	25GHz
Sweep Speed.....	Auto
IF Bandwidth.....	1 MHz
Video Bandwidth	1 MHz
Quasi-Peak Adapter Bandwidth.....	120 kHz
Quasi-Peak Adapter Mode.....	Normal
Resolution Bandwidth.....	1MHz

4.4 Test Procedure

For the radiated emissions test, both the EUT and all support equipment power cords were connected to the AC floor outlet since the power supply used in the EUT did not provide an accessory power outlet.

Maximizing procedure was performed on the six (6) highest emissions to ensure EUT compliance is with all installation combinations. All data was recorded in the peak detection mode. Quasi-peak readings was performed only when an emission was found to be marginal (within -4 dB of specification limit), and are distinguished with a "Qp" in the data table.

4.5 Corrected Amplitude & Margin Calculation

The Corrected Amplitude is calculated by adding the Antenna Factor and Cable Factor, and subtracting the Amplifier Gain from the Amplitude reading. The basic equation is as follows:

$$\text{Corr. Ampl.} = \text{Indicated Reading} + \text{Antenna Factor} + \text{Cable Factor} - \text{Amplifier Gain}$$

The "Margin" column of the following data tables indicates the degree of compliance with the applicable limit. For example, a margin of -7dB μ V means the emission is 7dB μ V below the maximum limit for Class B. The equation for margin calculation is as follows:

$$\text{Margin} = \text{Corr. Ampl.} - \text{Class B Limit}$$

4.6 Summary of Test Results

According to the data in section 4.7, the EUT complied with the FCC Title 47, Part 15, Subpart C, section 15.205, 15.207, and 15.249 after tested to 10th harmonics as required by FCC and had the worst margin of:

Base, 30 to 25GHz, 3 meters

- 2.3 dB μ V at 2402.55 MHz in the Vertical polarization at Low Frequency
- 6.2 dB μ V at 2405.00 MHz in the Horizontal polarization at High Frequency
- 4.4 dB μ V at 220.3 MHz in the Horizontal polarization at Unwanted Emission

Handset, 30 to 25GHz, 3 meters

- 3.6 dB μ V at 2474.00 MHz in the Horizontal polarization at Low Frequency
- 2.6 dB μ V at 2476.45 MHz in the Vertical polarization at High Frequency
- 4.4 dB μ V at 220.3 MHz in the Horizontal polarization at Unwanted Emission

4.7 Radiated Emissions Test Result Data**Base, 30 MHz to 25GHz, 3 meters**

INDICATED		TABLE Angle Degree	ANTENNA		CORRECTION FACTOR			CORRECTED AMPLITUDE	FCC 15 Subpart C		Comments
Frequency MHz	Ampl. dBμV/m		Height Meter	Polar H/V	Antenna dBμV/m	Cable dB	Amp. dB	Corr. Ampl. dBμV/m	Limit dBμV/m	Margin dB	
Low Frequency											
2402.55	90.2	0	2.2	V	28.1	3.4	30.0	91.7	94	-2.3	AVE, FUND
2402.55	87.0	180	3.0	H	28.1	3.4	30.0	88.5	94	-5.6	AVE, FUND
7207.60	37.0	90	1.0	H	35.1	5.6	30.0	47.7	54	-6.3	AVE
828.27	40.0	330	2.5	V	22.9	3.7	30.0	36.6	46	-9.4	PEAK
7207.50	31.0	45	1.0	V	35.1	5.6	30.0	41.7	54	-12.3	AVE
4805.00	32.9	160	1.0	V	32.5	4.9	30.0	40.3	54	-13.7	AVE
2402.55	90.5	0	2.2	V	28.1	3.4	30.0	92.0	114	-22.1	PEAK, FUND
2402.55	88.0	180	3.0	H	28.1	3.4	30.0	89.5	114	-24.6	PEAK, FUND
High Frequency											
2405.00	86.4	0	2.2	H	28.1	3.4	30.0	87.9	94.0	-6.2	AVE, FUND
2405.00	86.0	0	1.5	H	28.1	3.4	30.0	87.5	94.0	-6.6	AVE, FUND
12024.95	36.0	150	1.0	H	35.1	5.6	30.0	46.7	54.0	-7.3	AVE
4809.95	37.0	0	1.4	H	32.5	4.9	30.0	44.4	54.0	-9.6	AVE
2405.00	88.2	0	1.5	V	28.1	3.4	30.0	89.7	114.0	-24.4	PEAK, FUND
2405.00	87.0	0	2.2	H	28.1	3.4	30.0	88.5	114.0	-25.6	PEAK, FUND
Unwanted Emission											
220.3	50.6	130	1.5	H	12.1	3.9	25.0	41.6	46.0	-4.4	/
246.1	51.5	130	1.2	H	12.6	2.3	25.0	41.4	46.0	-4.6	/
660.0	40.2	310	1.5	H	20.7	3.4	25.0	39.3	46.0	-6.7	/
132.6	47.1	220	1.0	V	12.6	2.0	25.0	36.7	43.5	-6.8	/
308.4	44.3	280	1.2	H	15.1	4.6	25.0	39.0	46.0	-7.0	/
177.4	42.2	180	1.5	V	13.4	3.9	25.0	34.5	43.5	-9.0	/
88.2	46.9	350	1.8	V	9.7	2.2	25.0	33.8	43.5	-9.7	/
395.8	41.7	45	1.2	H	16.5	2.8	25.0	36.0	46.0	-10.0	/
150.1	40.3	310	1.2	V	13.0	0.7	25.0	29.0	43.5	-14.5	/

Note: There was no apparent emission after the sixth harmonics.

Handset Unit, 30 MHz to 25GHz, 3 meters

INDICATED		TABLE	ANTENNA		CORRECTION FACTOR			CORRECTED AMPLITUDE	FCC 15 Subpart C		Comments
Frequency MHz	Ampl. dBμV/m	Angle Degree	Height Meter	Polar H/V	Antenna dBμV/m	Cable dB	Amp. dB	Corr. Ampl. dBμV/m	Limit dBμV/m	Margin dB	
Low Frequency											
2474.00	89.0	270	1.5	H	28.1	3.4	30.0	90.5	94.0	-3.6	AVE, FUND
2474.00	87.0	0	1.4	V	28.1	3.4	30.0	88.5	94.0	-5.6	AVE, FUND
9689.00	35.9	45	1.5	H	35.1	5.6	30.0	46.6	54.0	-7.4	AVE
4879.00	36.0	45	1.2	V	32.5	4.9	30.0	43.4	54.0	-10.6	AVE
9689.00	32.0	45	1.2	V	35.1	5.6	30.0	42.7	54.0	-11.3	AVE
2474.00	90.0	270	1.5	H	28.1	3.4	30.0	91.5	114.0	-22.6	PEAK, FUND
2474.00	88.5	0	1.4	V	28.1	3.4	30.0	90.0	114.0	-24.1	PEAK, FUND
High Frequency											
2476.45	90.0	150	1.5	V	28.1	3.4	30.0	91.5	94.0	-2.6	AVE, FUND
7429.35	37.0	130	1.0	H	35.1	5.6	30.0	47.7	54.0	-6.3	AVE
4952.90	40.0	90	1.0	H	32.5	4.9	30.0	47.4	54.0	-6.6	AVE
2476.45	85.0	125	2.0	H	28.1	3.4	30.0	86.5	94.0	-7.6	AVE
4952.90	37.0	90	1.5	V	32.5	4.9	30.0	44.4	54.0	-9.6	AVE, FUND
7429.35	32.5	90	1.5	V	35.1	5.6	30.0	43.2	54.0	-10.8	AVE
2476.45	92.0	150	1.5	V	28.1	3.4	30.0	93.5	114.0	-20.6	PEAK, FUND
2476.45	86.0	125	2.0	H	28.1	3.4	30.0	87.5	114.0	-26.6	PEAK, FUND
Unwanted Emission											
220.30	50.6	130	1.5	H	12.1	3.9	25.0	41.6	46.0	-4.4	/
246.10	51.5	130	1.2	H	12.6	2.3	25.0	41.4	46.0	-4.6	/
659.99	40.2	310	1.5	H	20.7	3.4	25.0	39.3	46.0	-6.7	/
132.60	47.1	220	1.0	V	12.6	2.0	25.0	36.7	43.5	-6.8	/
308.40	44.3	280	1.2	H	15.1	4.6	25.0	39.0	46.0	-7.0	/
177.40	42.2	180	1.5	V	13.4	3.9	25.0	34.5	43.5	-9.0	/
88.20	46.9	350	1.8	V	9.7	2.2	25.0	33.8	43.5	-9.7	/
395.77	41.7	45	1.2	H	16.5	2.8	25.0	36.0	46.0	-10.0	/
150.06	40.3	310	1.2	V	13.0	0.7	25.0	29.0	43.5	-14.5	/

Note: No more apparent emission found after the forth harmonics for base and handset unit.

AVE: Average

5 - BAND EDGES

Requirements: FCC 15.249 (c), the emission power at the START and STOP frequencies shall be at least 50 dB below the level of the fundamental or to the general radiated emission limits in FCC 15.209, whichever is the lesser attenuation.

5.1 Test Procedure

With the EUT's antenna attached, the EUT's radiated emission power was received by the test antenna which was connected to the spectrum analyzer with the START and STOP frequencies set to the EUT's operation band.

5.2 Test Equipment

HP 8566B Spectrum Analyzer
HP 7470A Plotter

5.3 Test Results

Refer to the attached plots.

Base - Low Frequency
Handset - High Frequency

