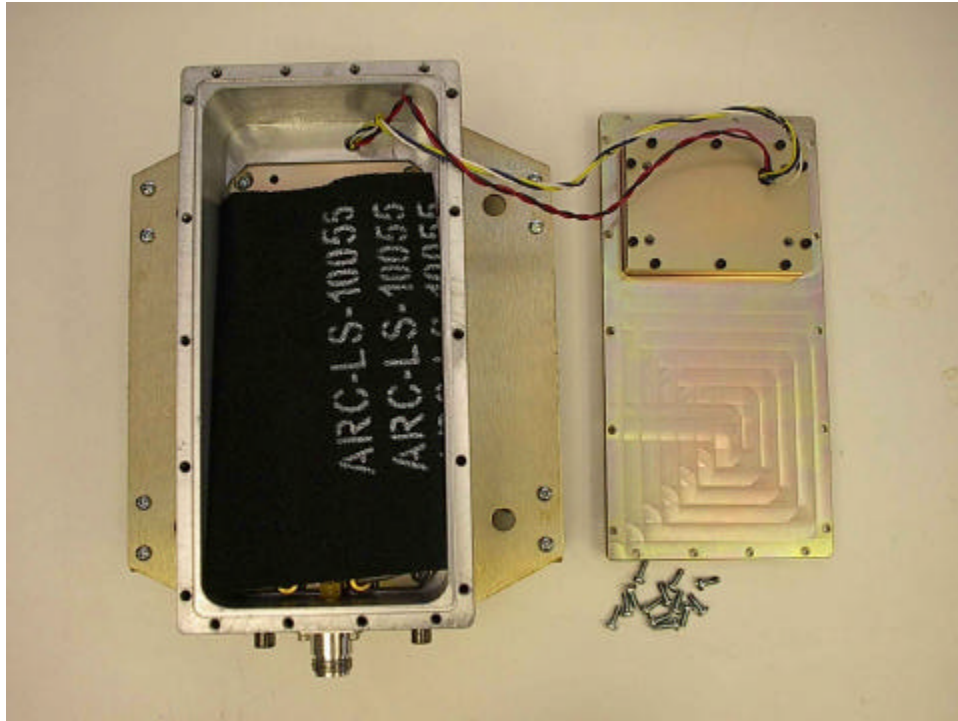


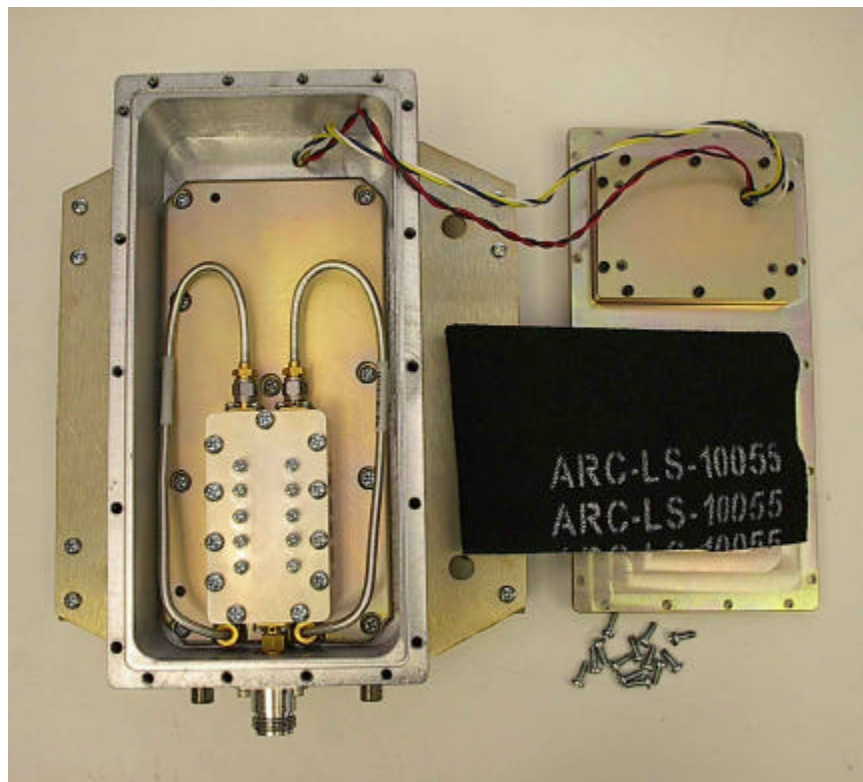
## **Internal Photographs**

The device enclosure consists of two parts, a rear section in which the digital interface circuits, and baseband circuits are housed and a front section containing the LCD and rf circuits. The photographs have been split into two sections. The first shows the assembly and detail of the boards in the front section. The second shows the assembly and detail of the boards in the rear section.

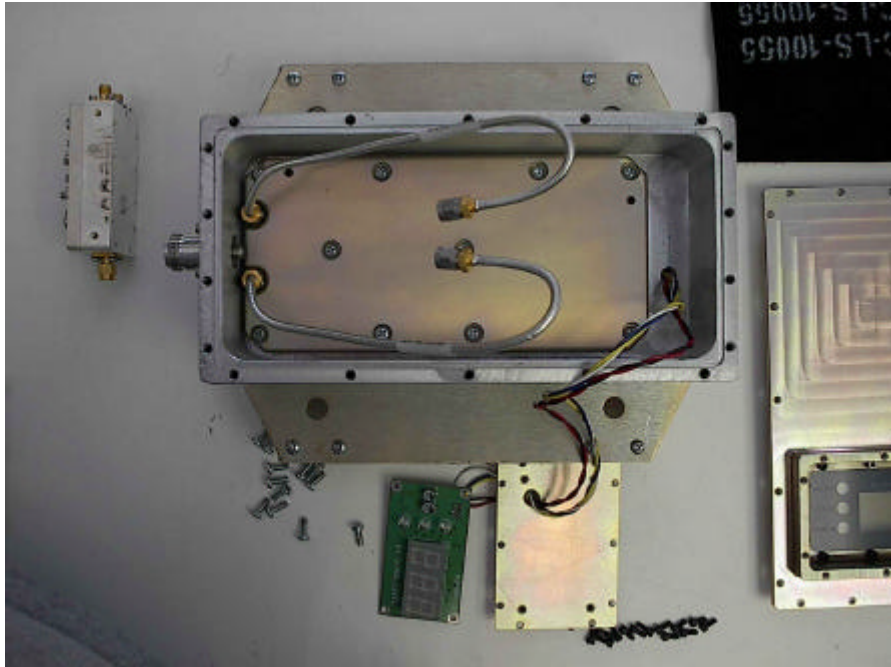
## Internal Photographs – Front Section



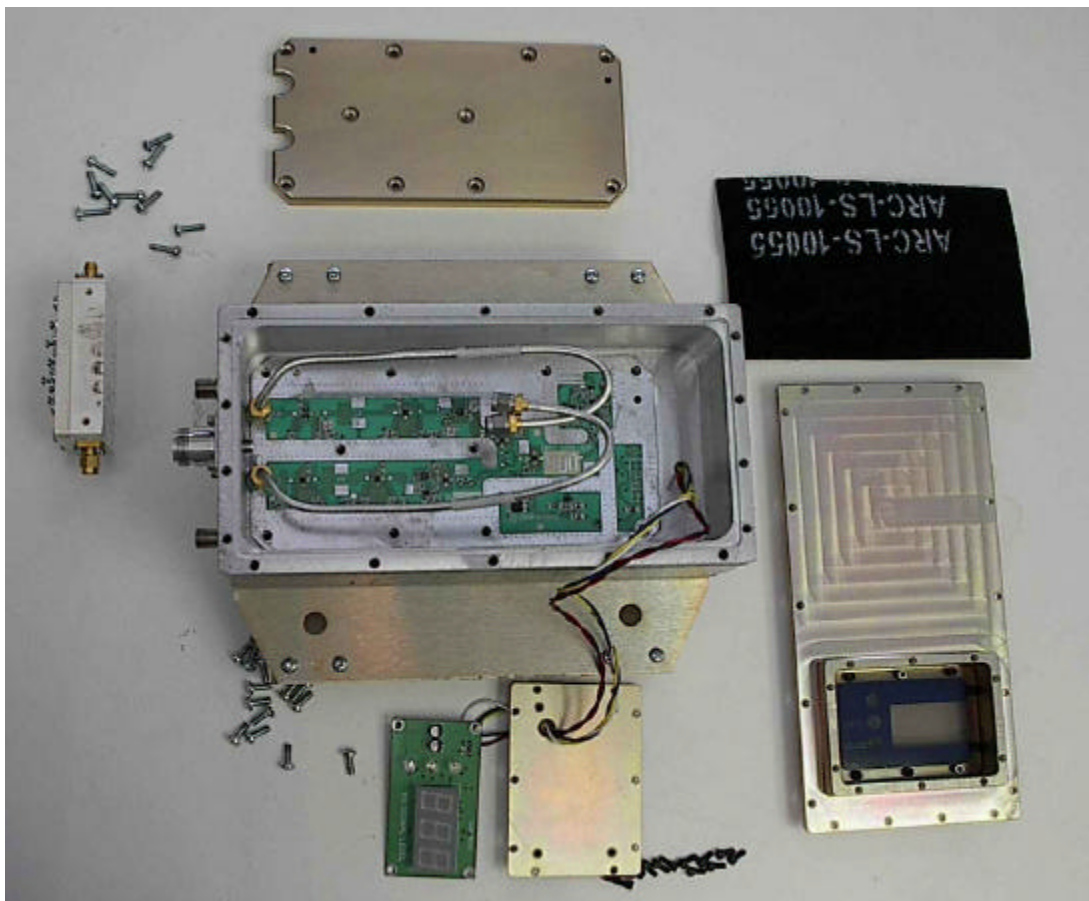
Top removed showing RF absorber



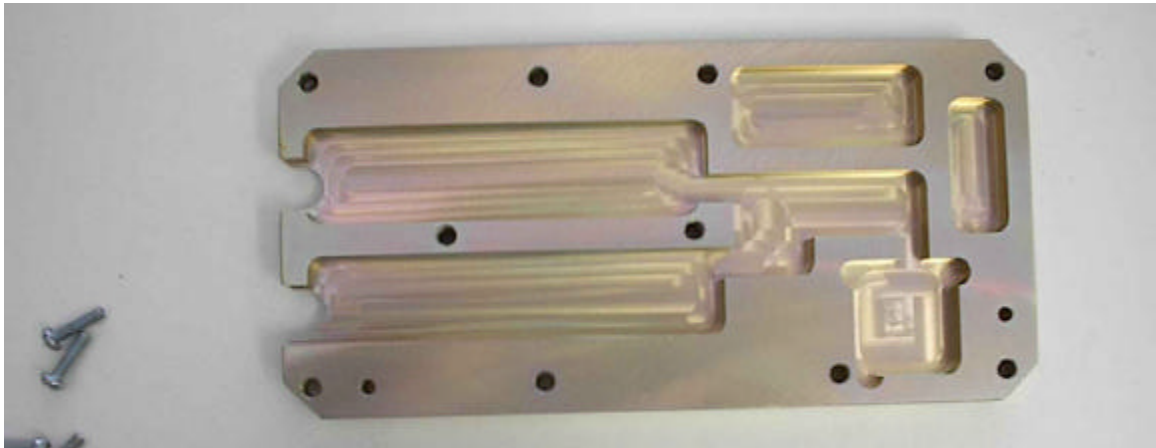
RF absorber removed revealing Diplexer Filter and RF module



Diplexer filter removed



RF Module shield removed

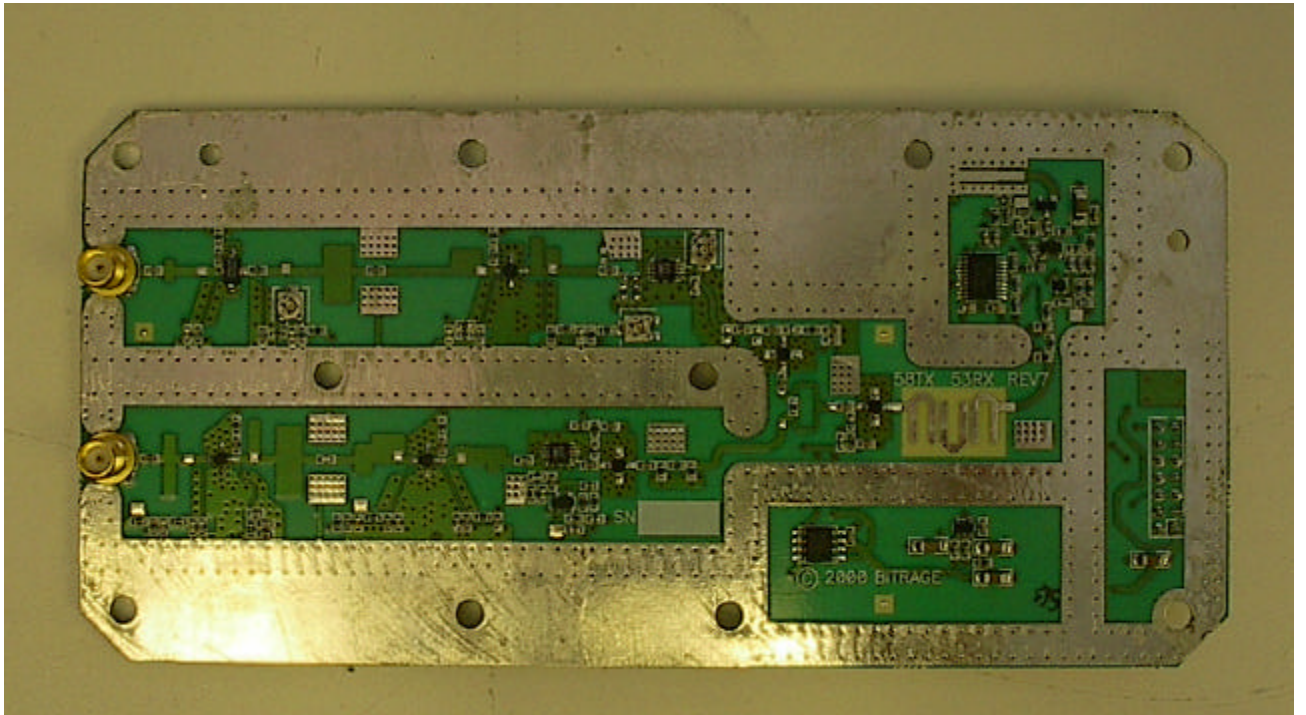


RF Circuit Board Shield (Bottom View)

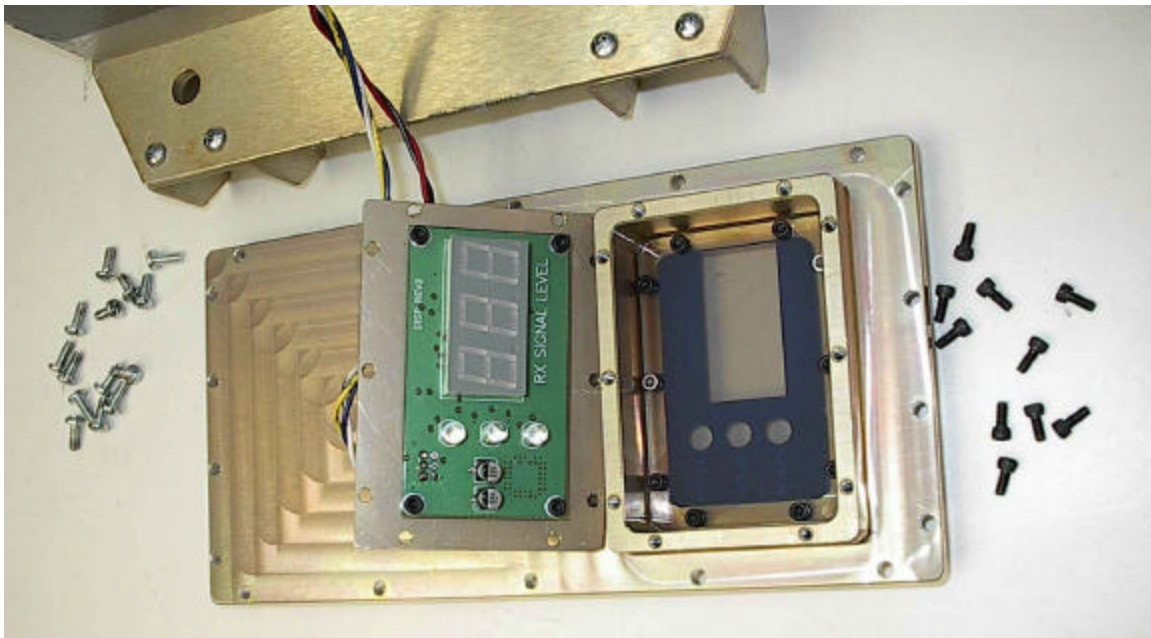


RF Circuit Board, bottom view

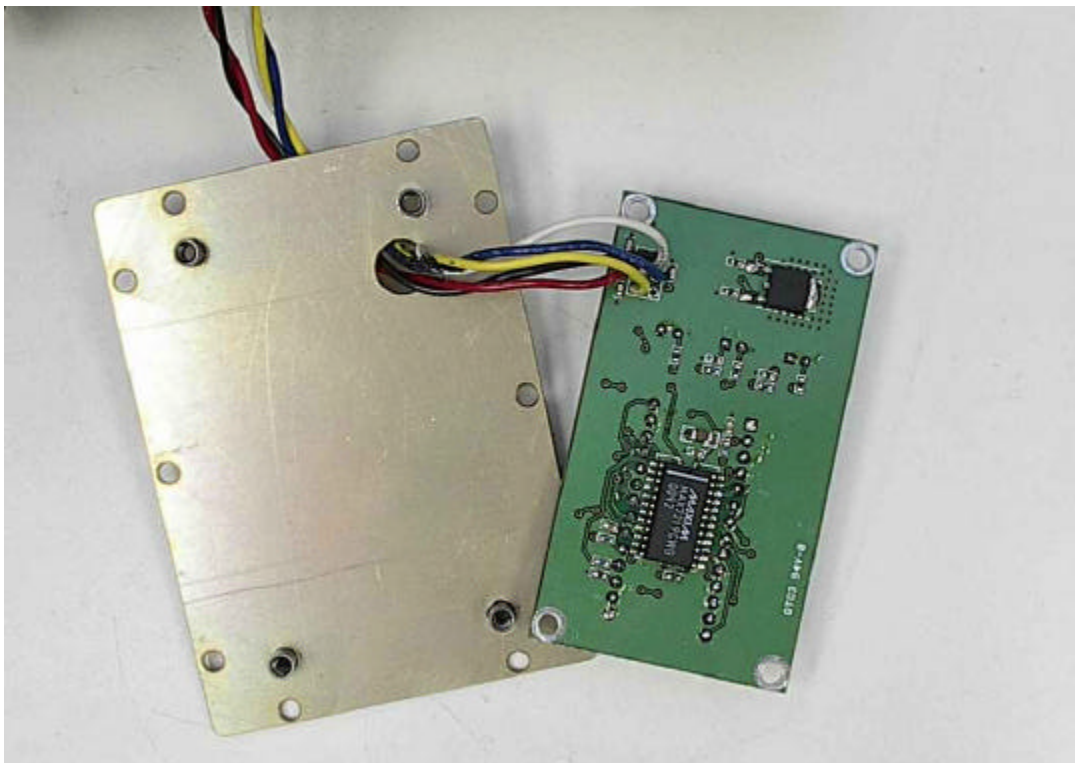




RF Circuit Board, top view

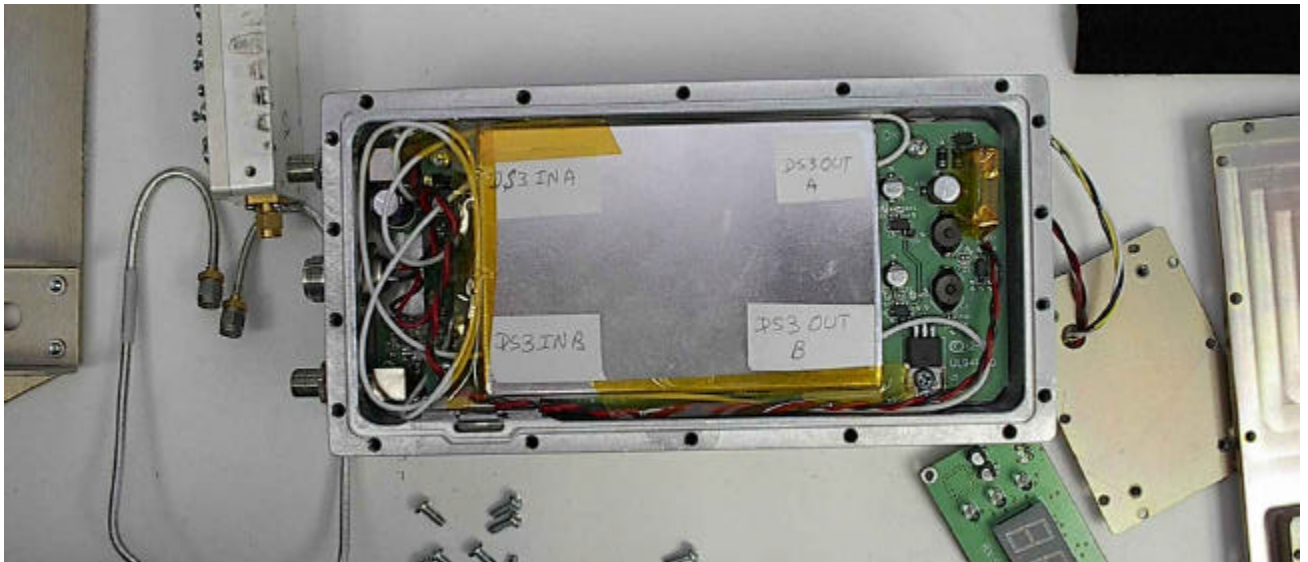


Display Circuit Board – Front View

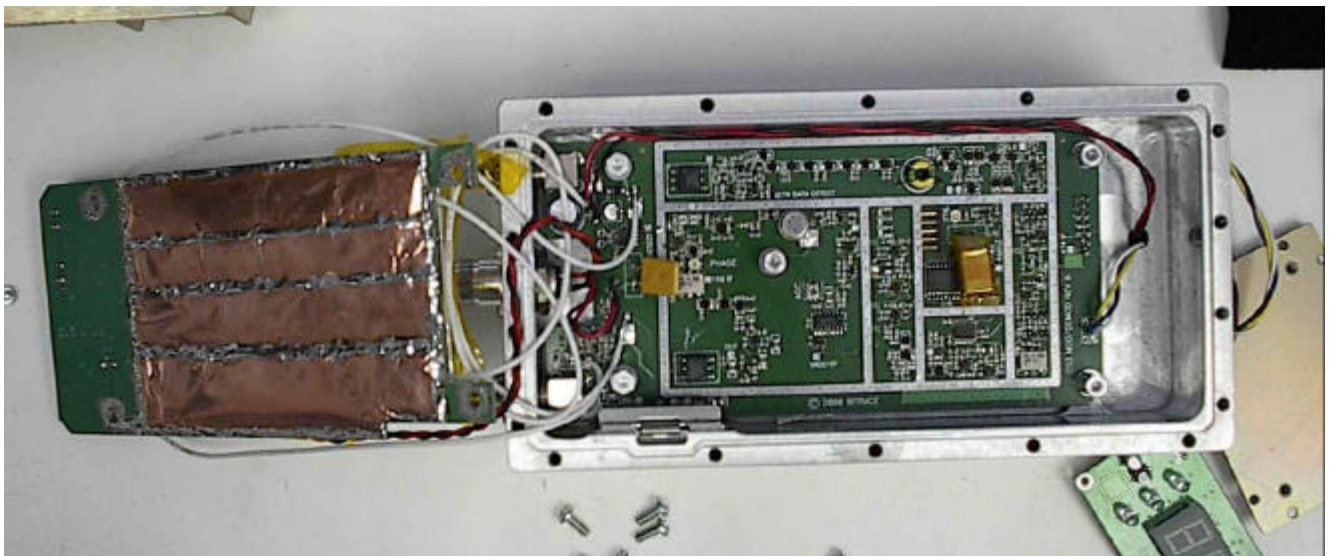


Display Circuit Board – Rear View

## Internal Photographs – Rear Section

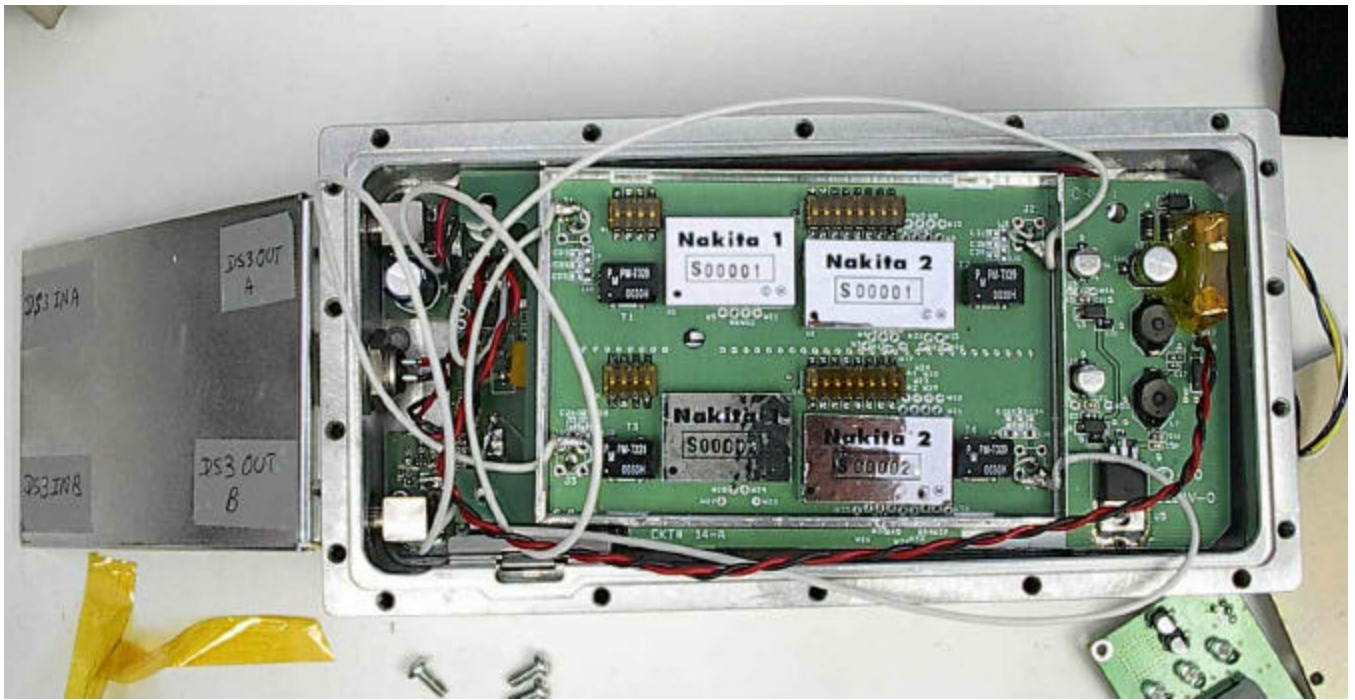


Digital Section – Assembly Top View

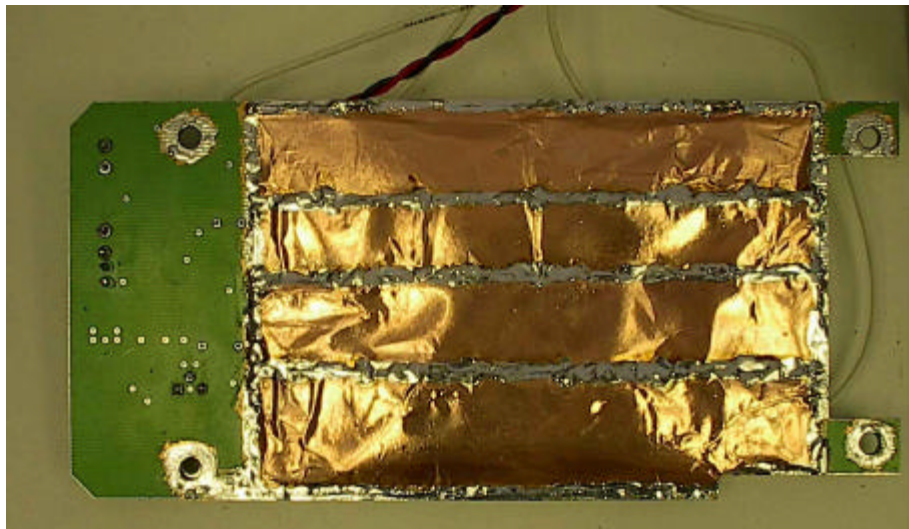


Digital Section – Assembly Top View with Digital Processor Board removed



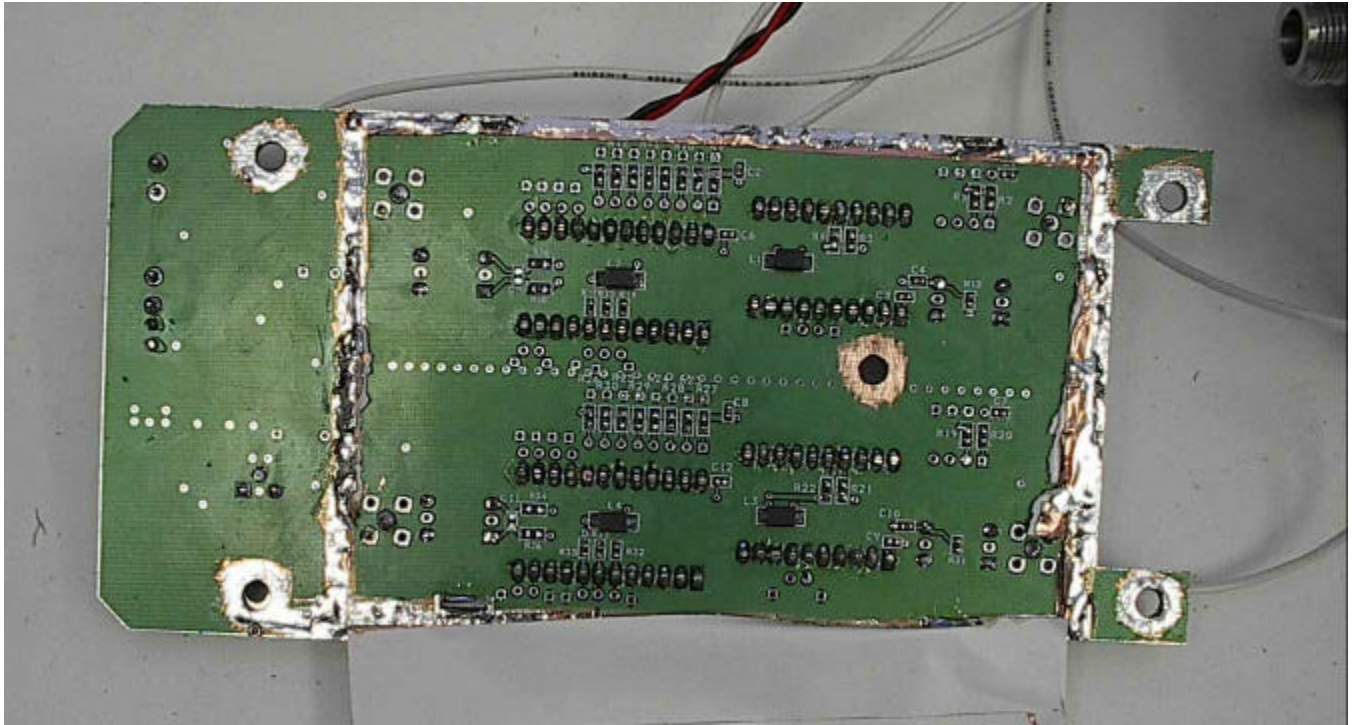


Digital Processor Board – Top View With Shield Removed

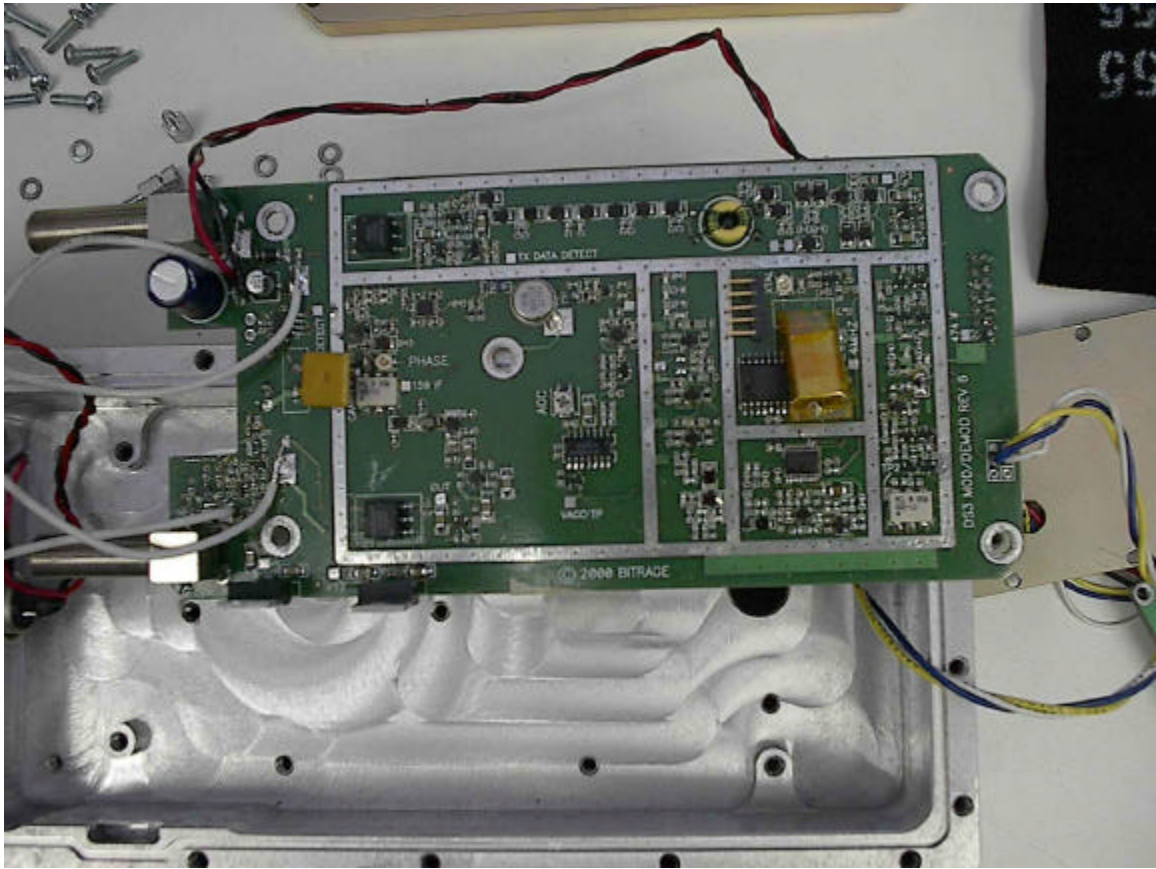


Digital Processor Board – Bottom View With Shield

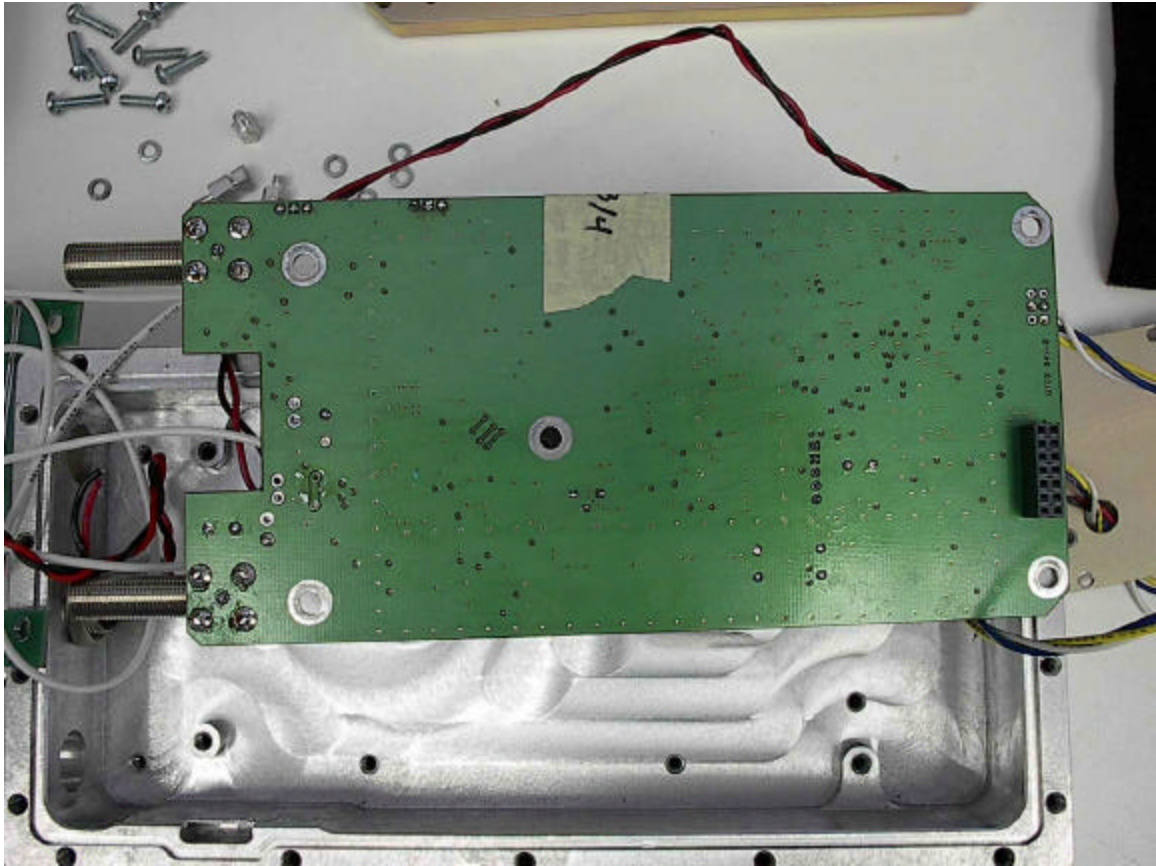




Digital Processor Board– Bottom View With Shield Removed



Baseband Board– Top View



Baseband Board – Bottom View