



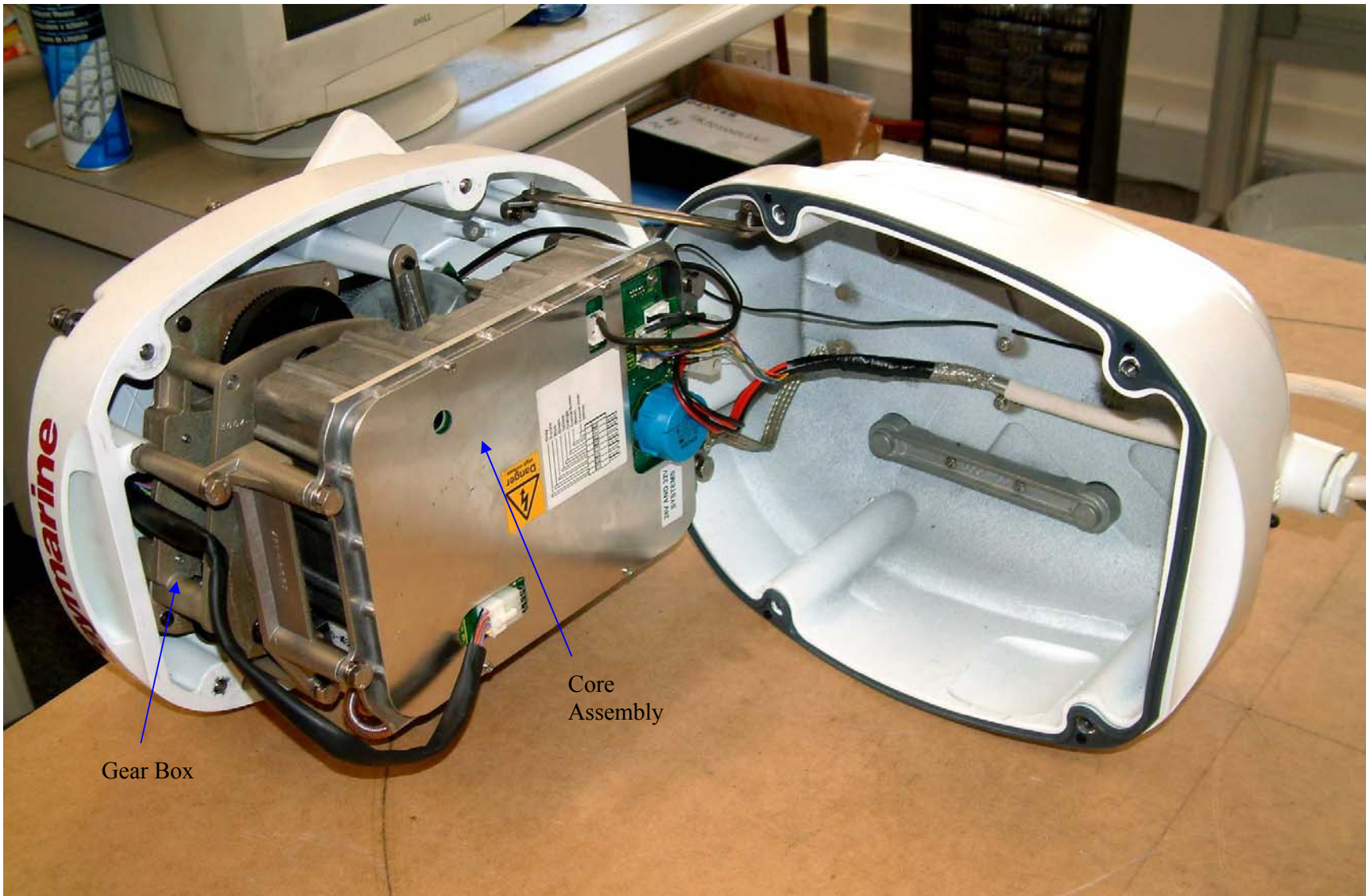
Raymarine Limited

Raytheon Pathfinder Series Radar

Photographs –Internal

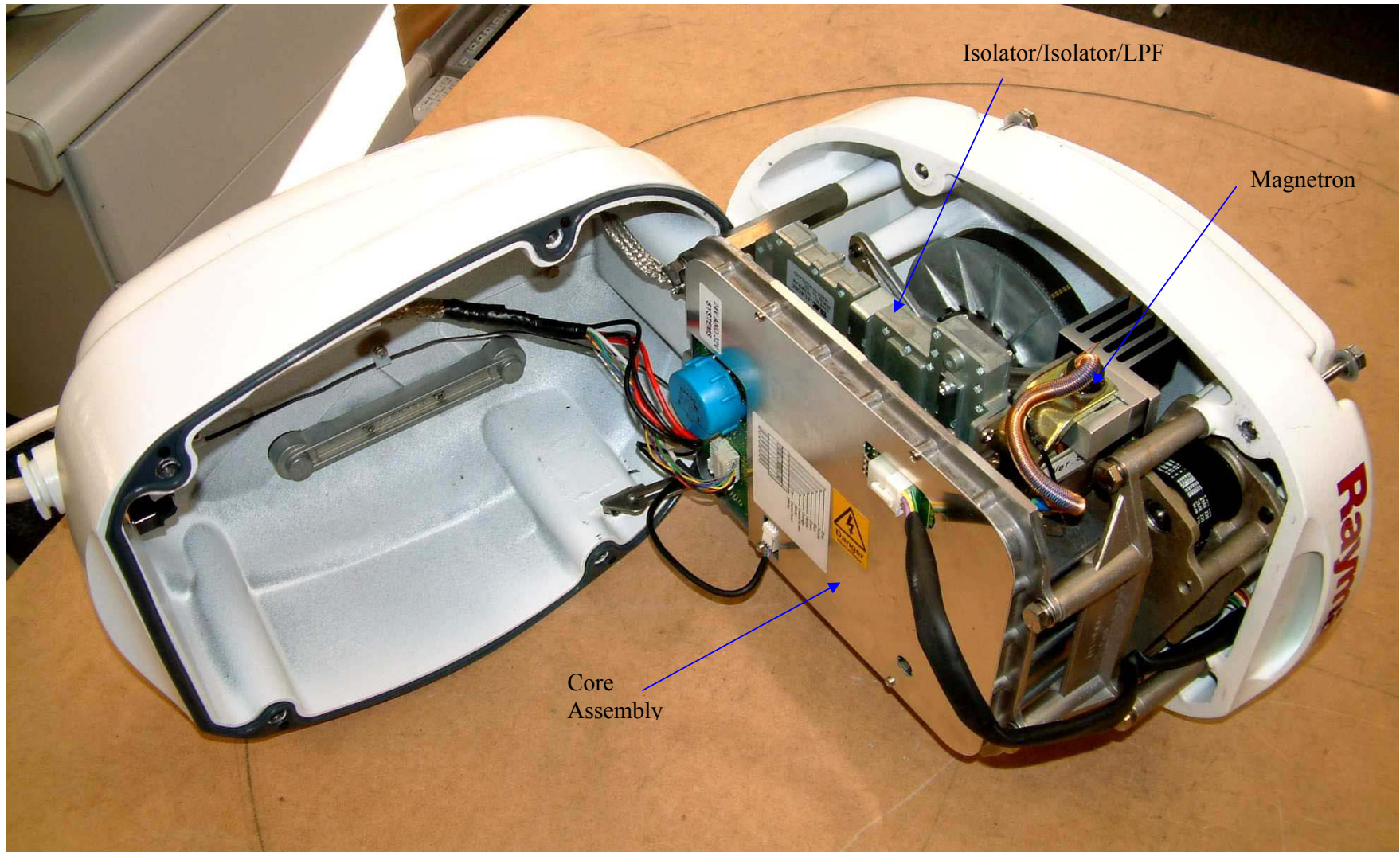
FCC ID: PJ5MTX9-S3

10kW, Open Array Scanner Unit



10Kw Open Array Scanner Unit

Pedestal open



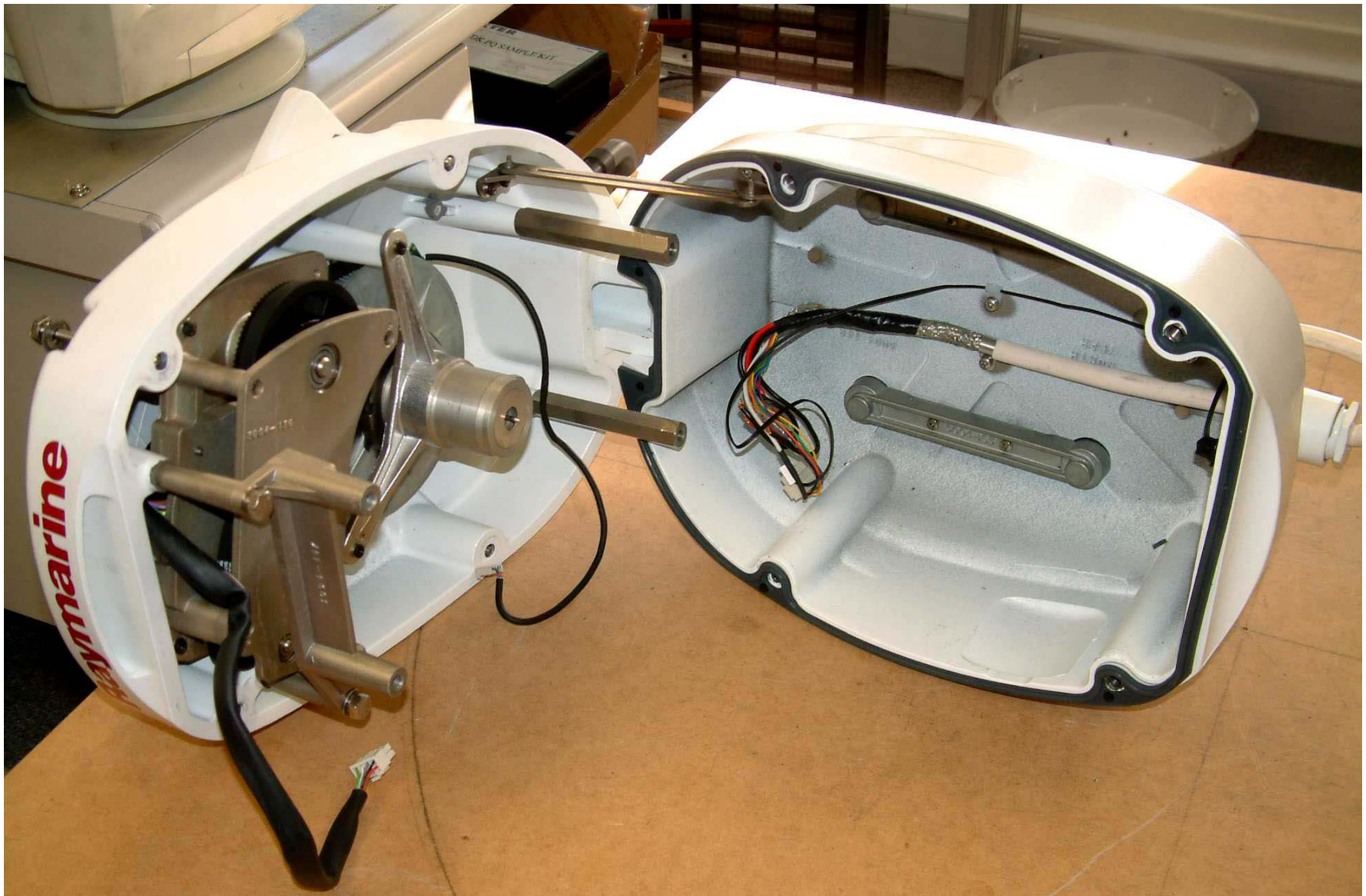
Isolator/Isolator/LPF

Magnetron

Core Assembly

10Kw Open Array Scanner Unit

Pedestal open



10Kw Open Array Scanner Unit

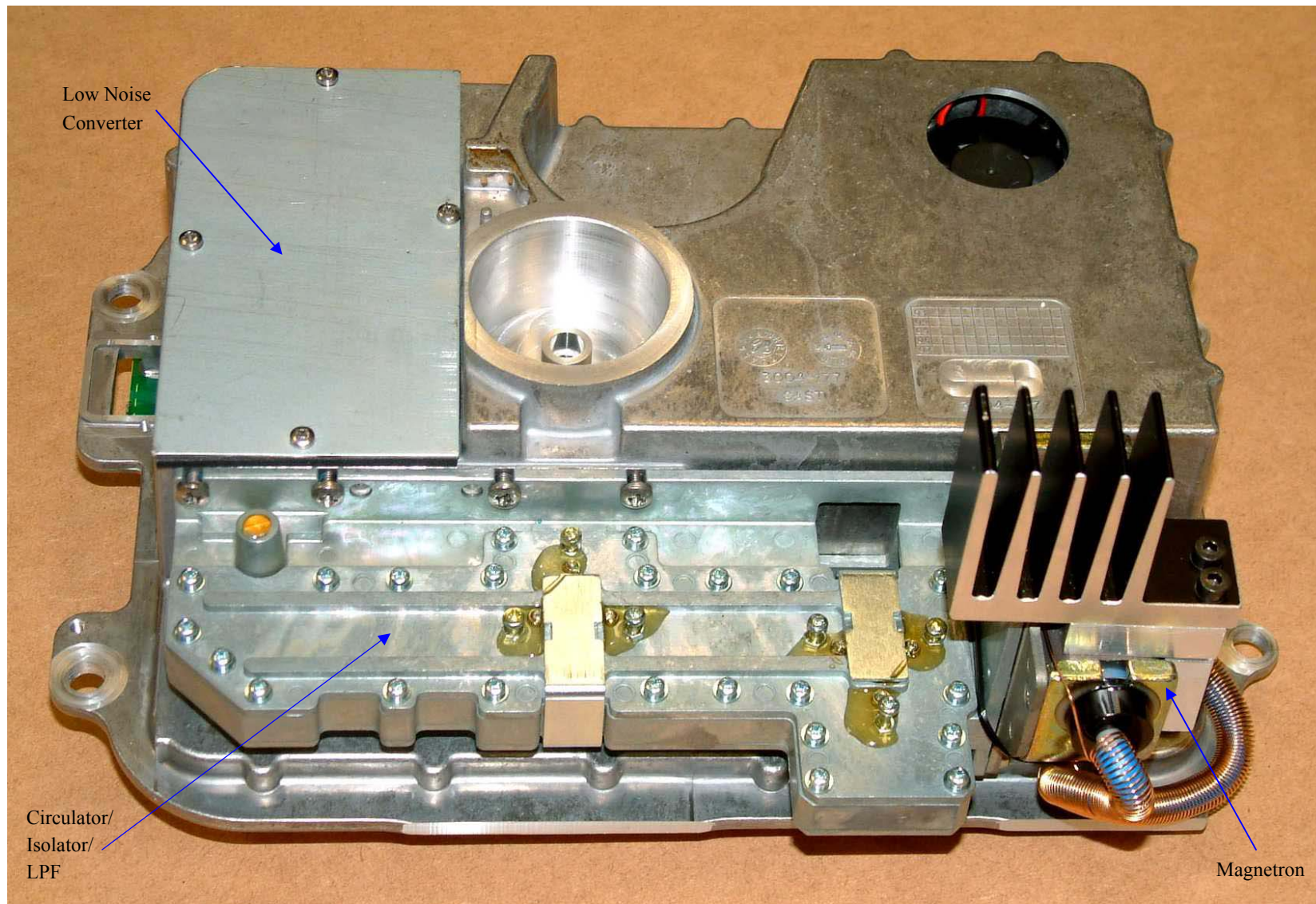
Raymarine Limited, Anchorage Park, Portsmouth, England

Gearbox and part of Co-axial tube assembly



4kW and 10kW Open array Scanner Unit

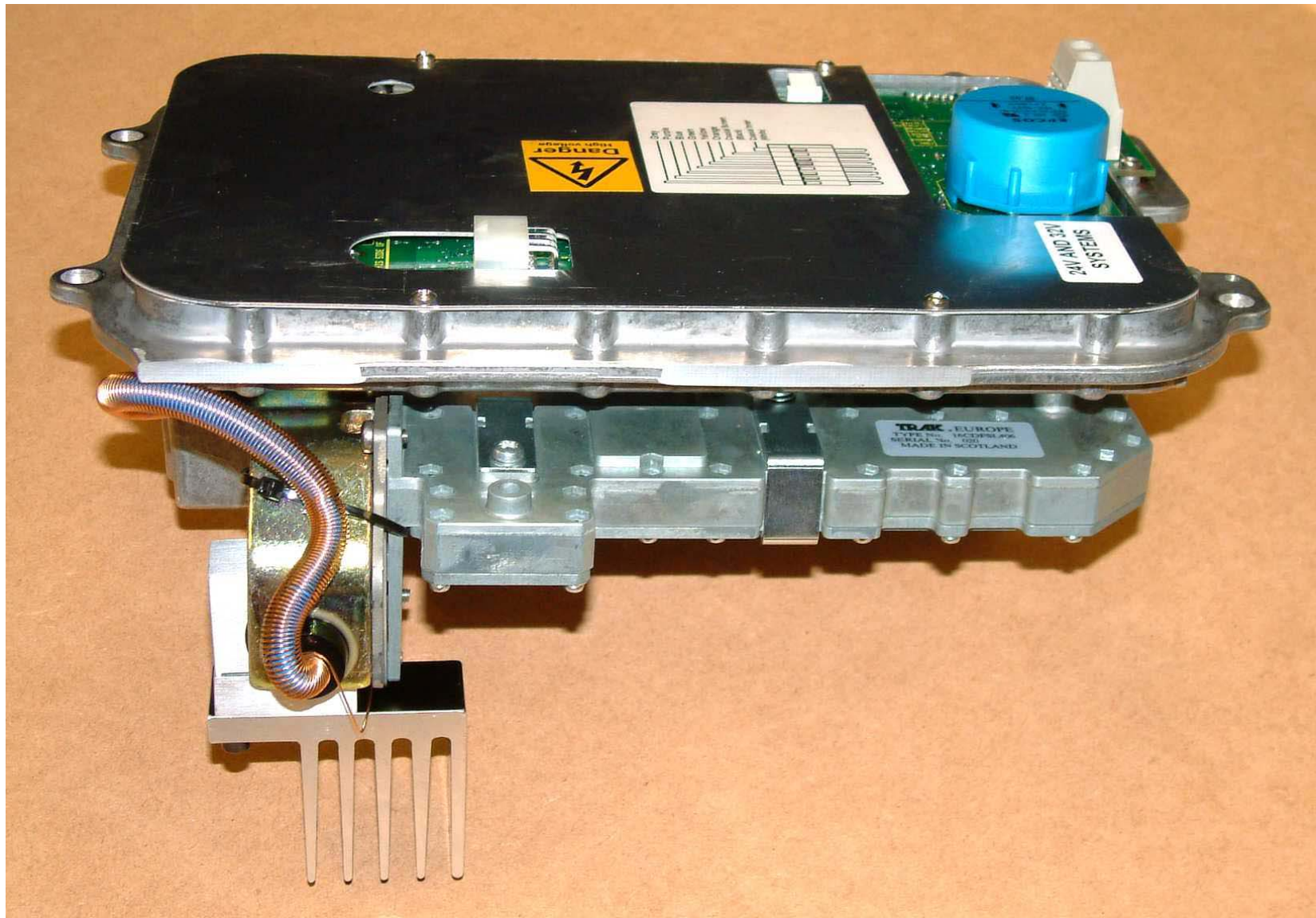
Co-axial tube assembly



10kW Open Array Scanner Unit

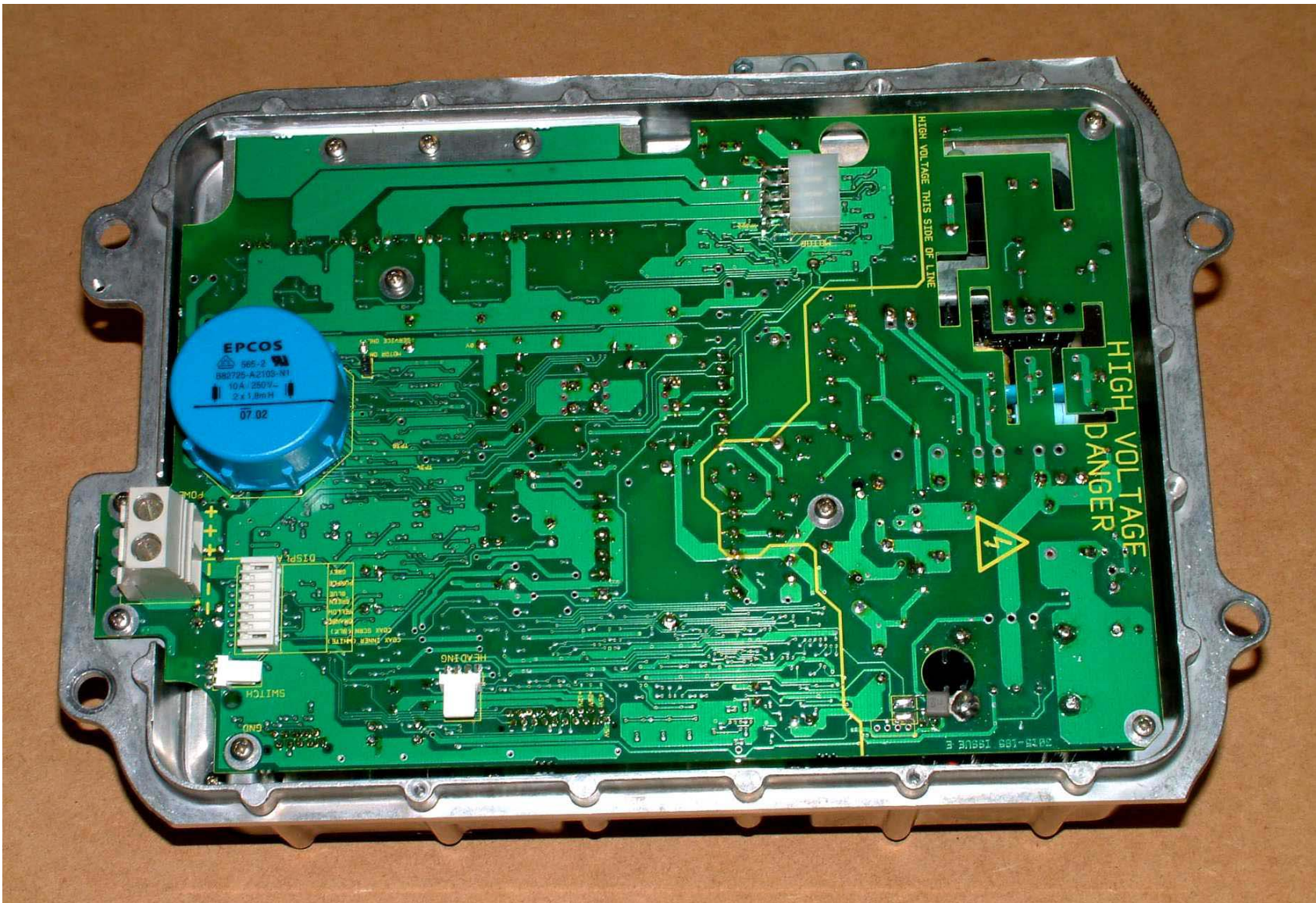
Top view of Core

Raymarine Limited, Anchorage Park, Portsmouth, England



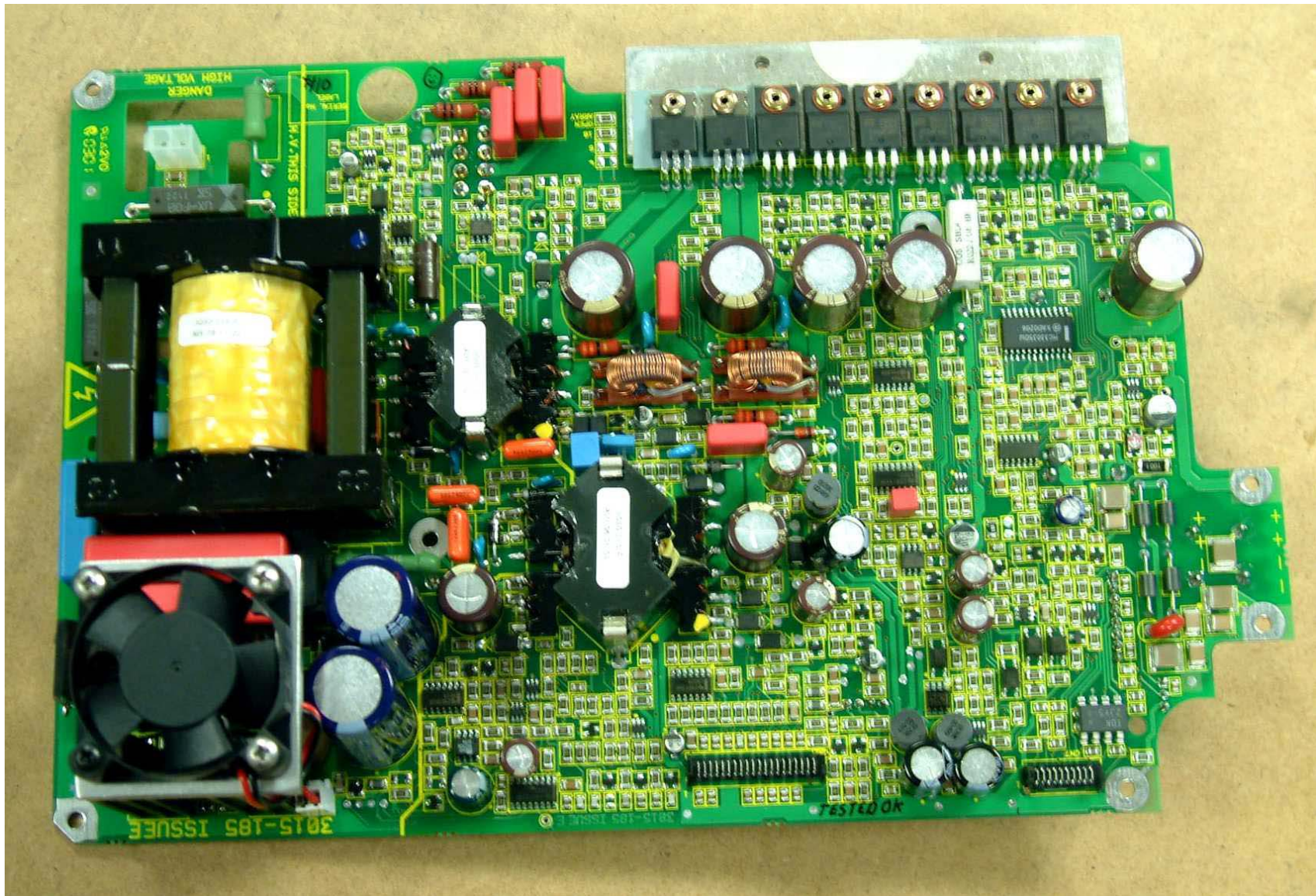
10kW Open Array Scanner Unit

Under view of core



10kW Open Array Scanner Unit

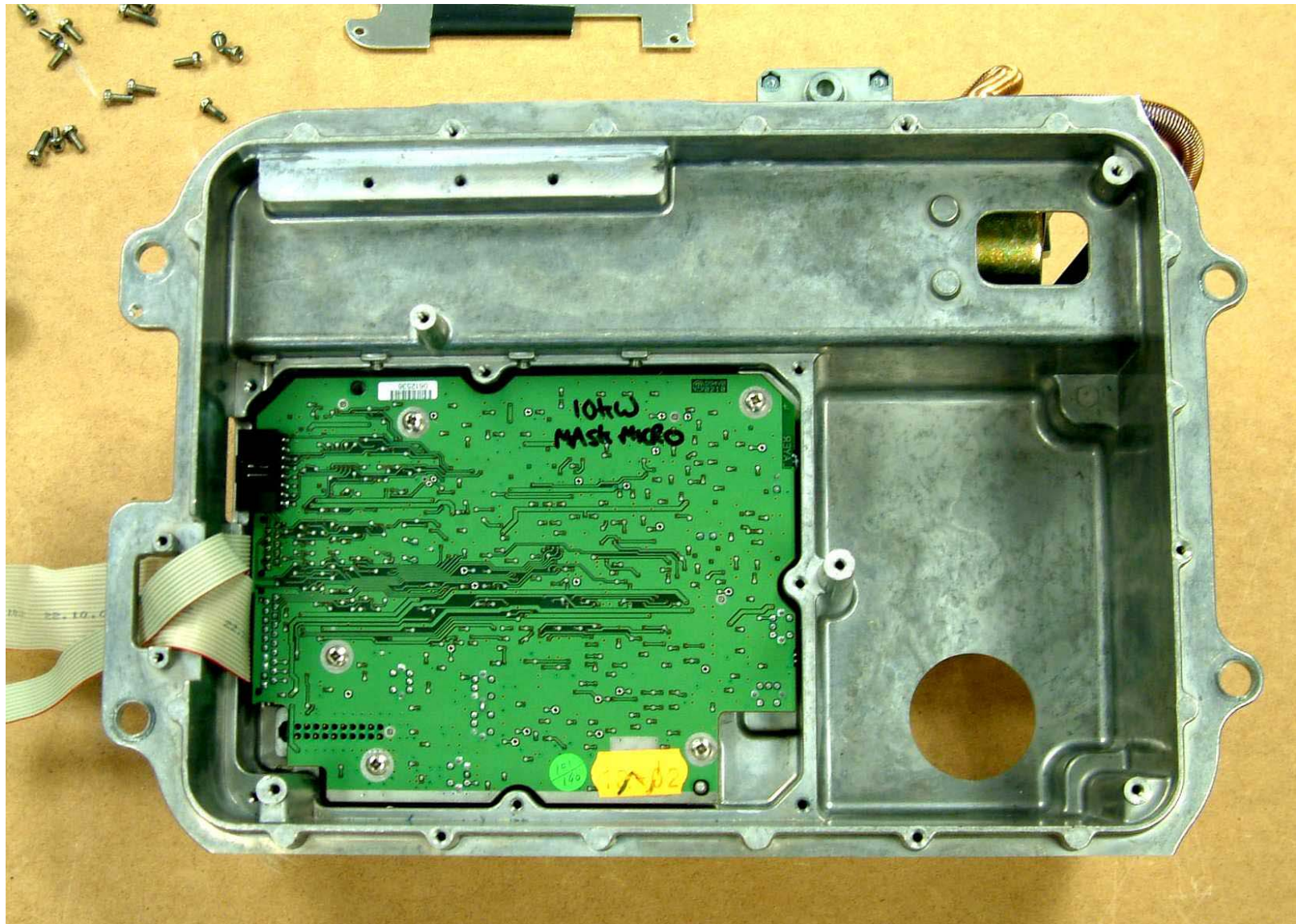
Underside of Modulator PCB, with screening plate removed



10kW Open Array Scanner Unit

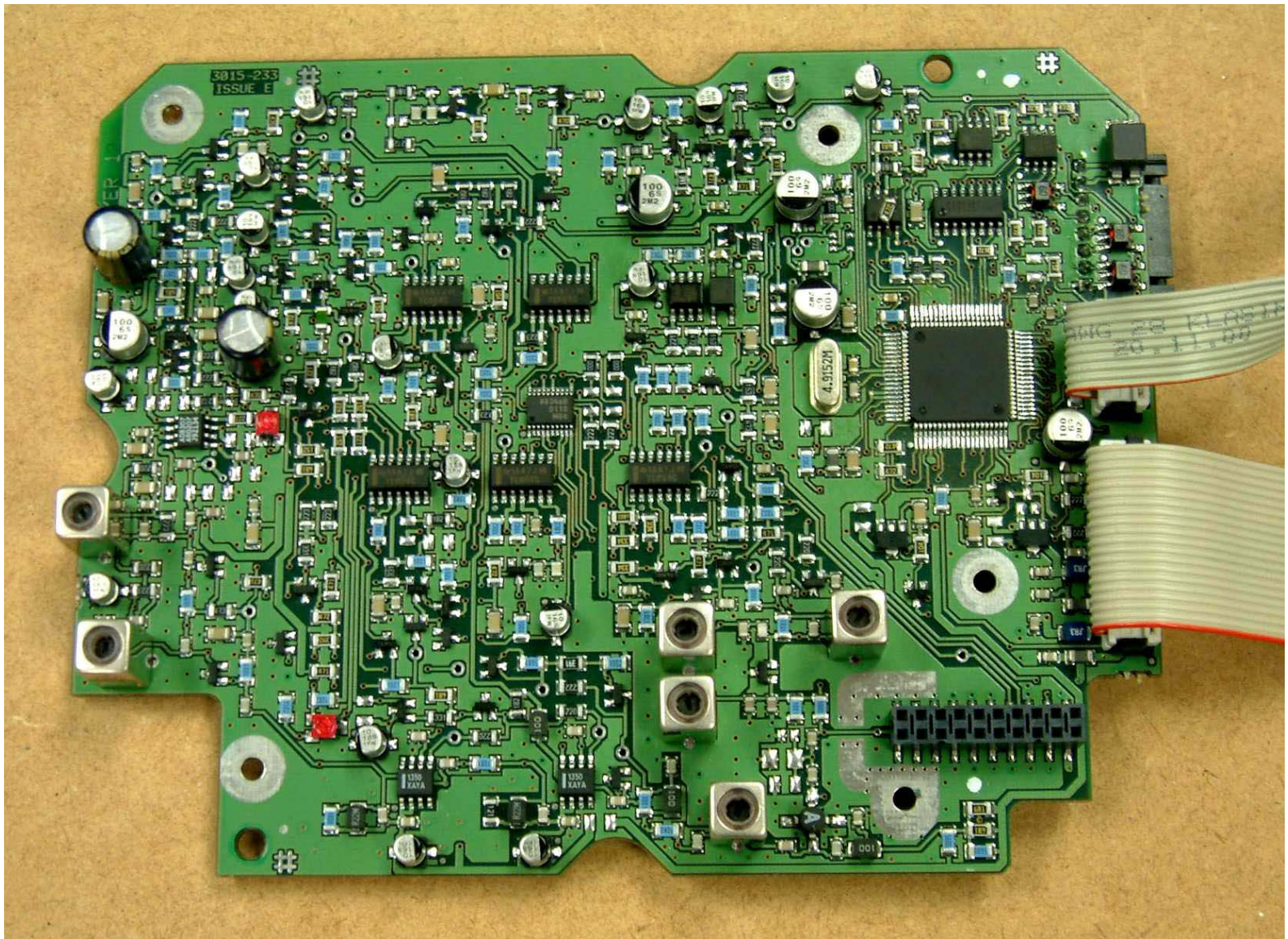
Modulator PCB

Raymarine Limited, Anchorage Park, Portsmouth, England



10kW Open Array Scanner Unit

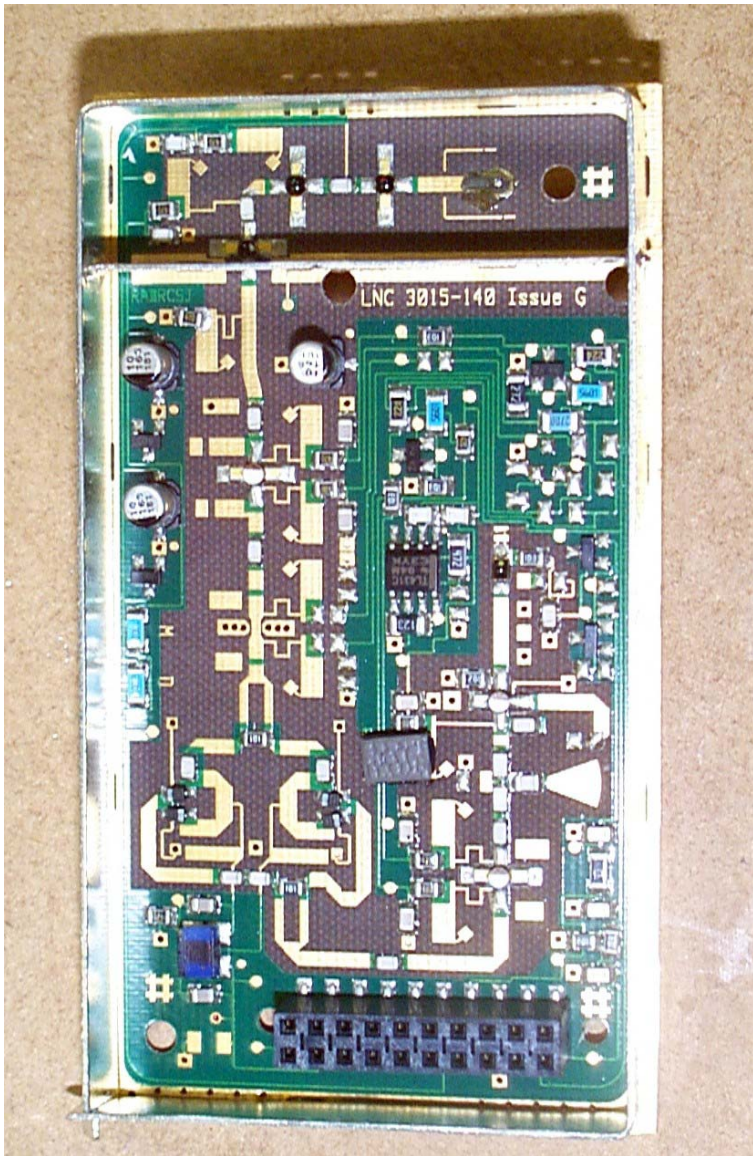
Underside of IF PCB, with screening plate removed



10kW Open Array Scanner Unit

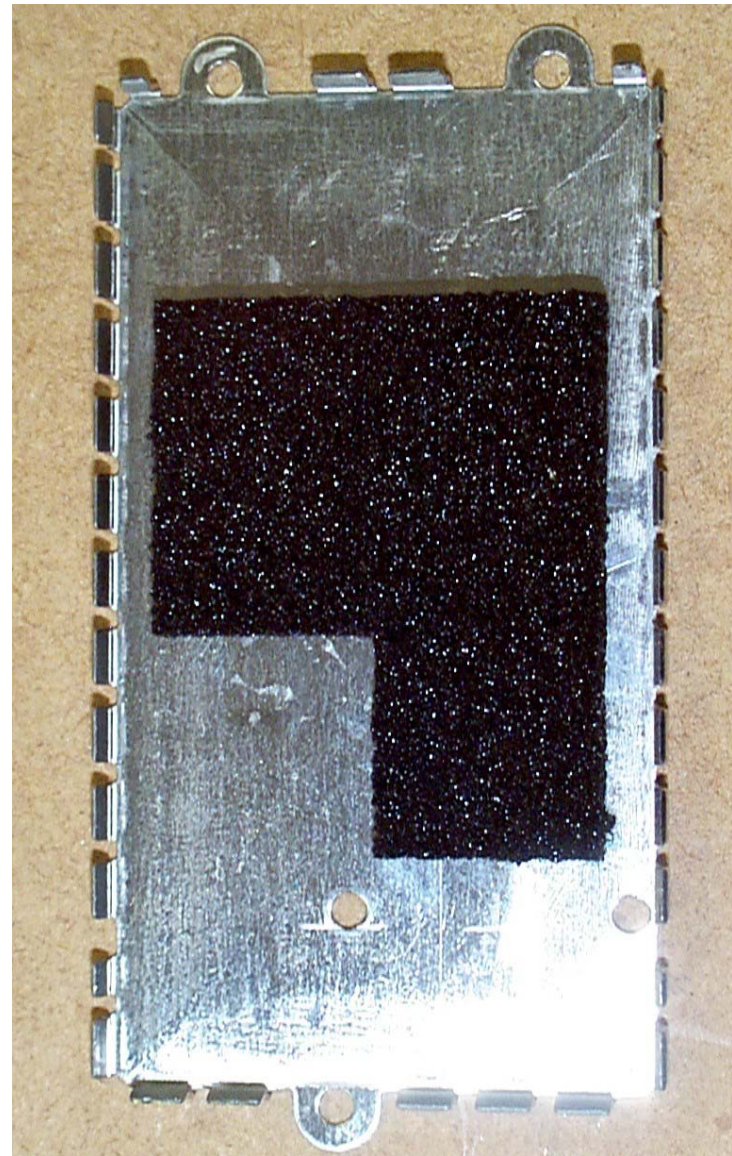
IF PCB

Raymarine Limited, Anchorage Park, Portsmouth, England



'Pathfinder' Scanner Unit

Raymarine Limited, Anchorage Park, Portsmouth, England



Low Noise Converter (LNC) and cover