

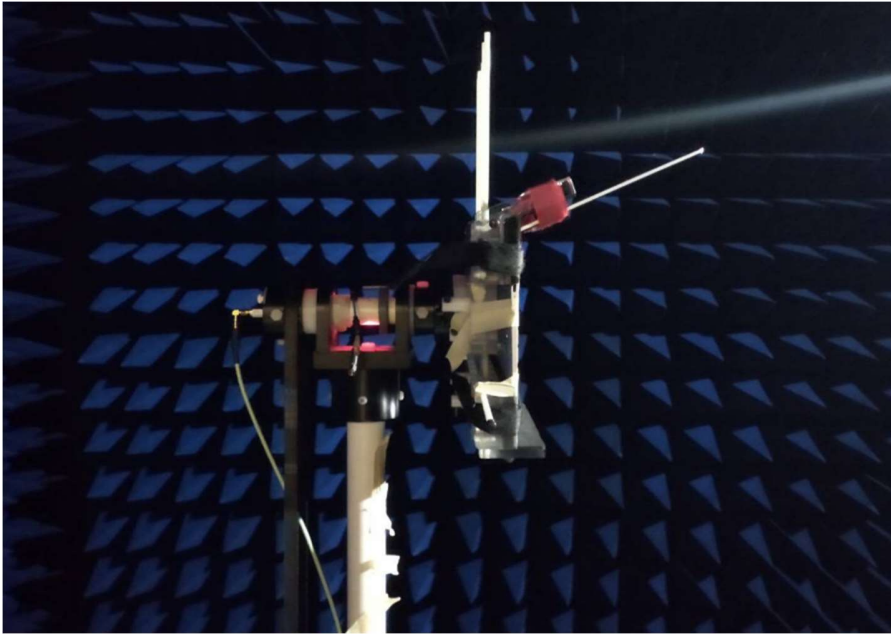
Table of Contents

Cover page	1
Annex A. Photographs	
A.1 Setup Photo.....	2
A.2 Test sample.....	3
Annex B. Antenna Location	
B.1 Antenna Host Platform Location Information.....	5
B.2 Antenna dimensional information for SAR evaluation.....	6

Annex A. Photographs

A.1 Setup Photo

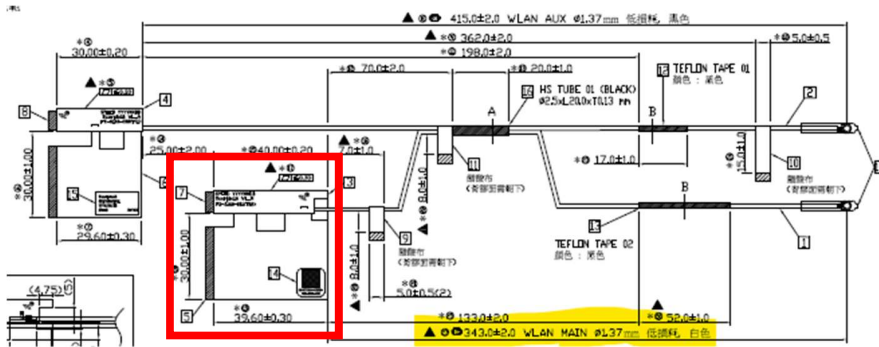
<insert test diagram here for test site utilized>



A.2 Test sample

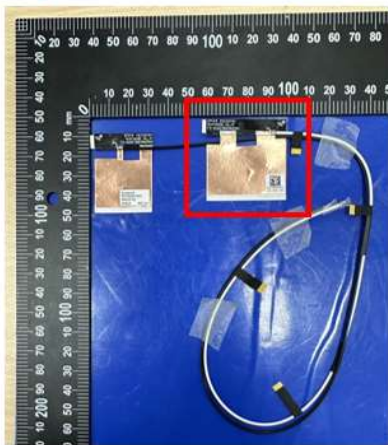
Main Antenna

Antenna Drawing

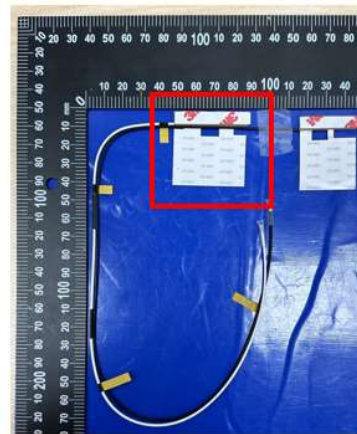


Antenna Photo

Front



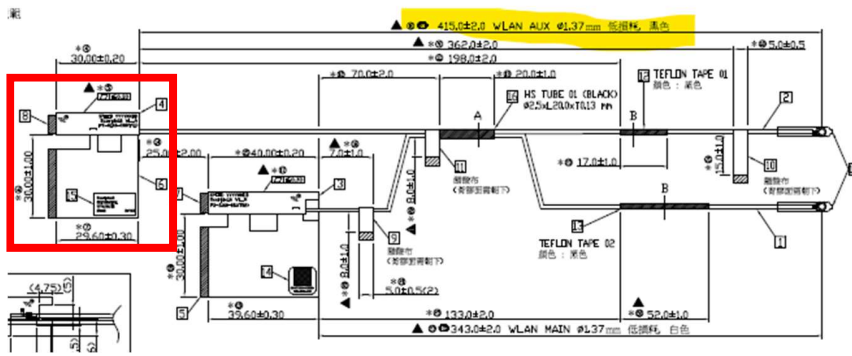
Back



Note: antenna photo should include L type ruler

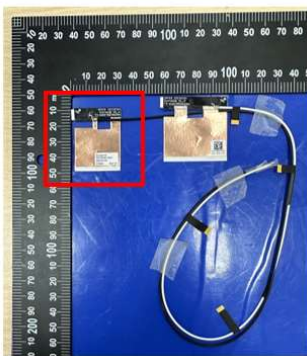
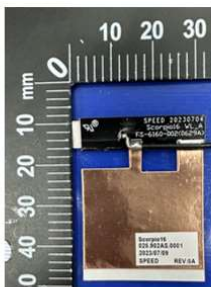
Aux Antenna

Antenna Drawing

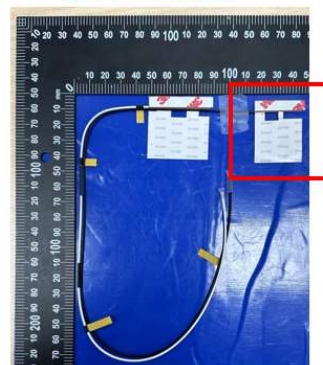


Antenna Photo

Front



Back



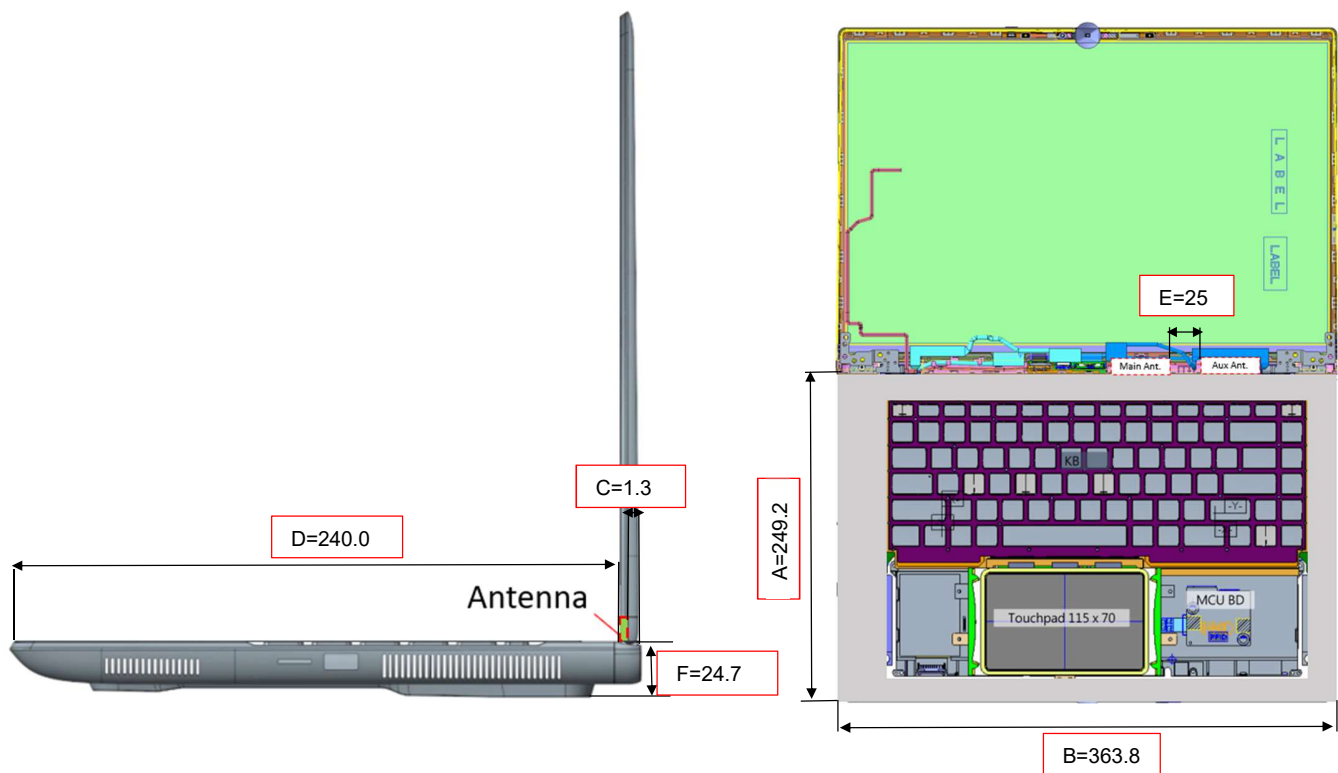
Note: antenna photo should include L type ruler

Annex B. Antenna Location

B.1 Antenna Host Platform Location Information

Include a dimensioned photo(s) or dimensioned drawing(s) of Main and Aux antenna placements (measurements are not required for receive-only antenna).

Any antenna that transmits must show dimensions to bottom of laptop. Provide a description of the materials that are used for supporting or surrounding transmit antennas; for example, non-conductive plastics vs. conductive coated plastic or metallic materials.



Item	Location	Distance(mm)
A	System Y	249.2
B	System X	363.8
C	Antenna to edge	1.3
D	Antenna to edge	240.0
E	WLAN-Main-Antenna to WLAN-Aux-Antenna	25
F	Antenna to table	24.7

B.2 Antenna dimensional information for SAR evaluation

Include a dimensioned photo(s) or dimensioned drawing(s) showing the distance (mm) between the transmit antennas and the user. For notebook/laptop hosts show lapheld position (example below). For tablet hosts show all orientations including lapheld, primary & secondary portrait, primary & secondary landscape positions. Include a description of any proximity sensors or power throttling implementations that limit or exclude use of any host orientation.

