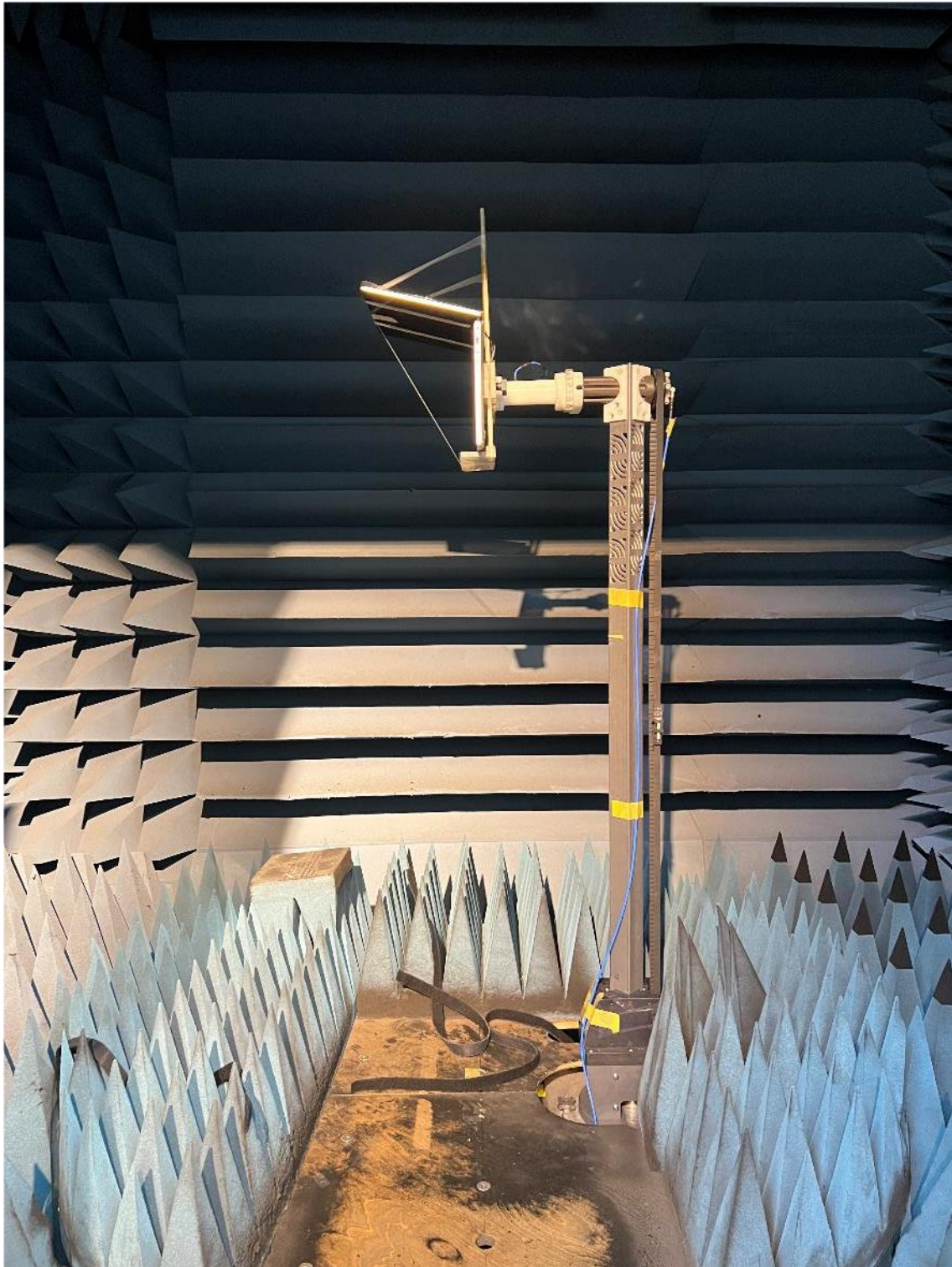


# Annex A. Photographs

---

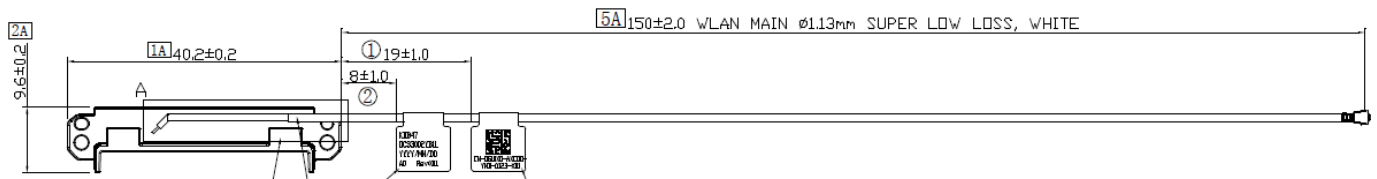
## A.1 Setup Photo



## A.2 Test sample

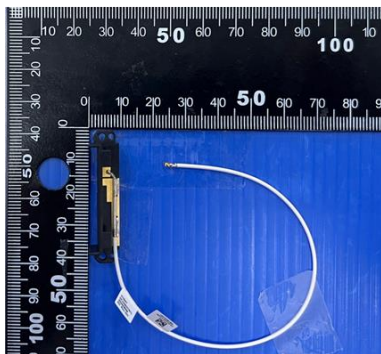
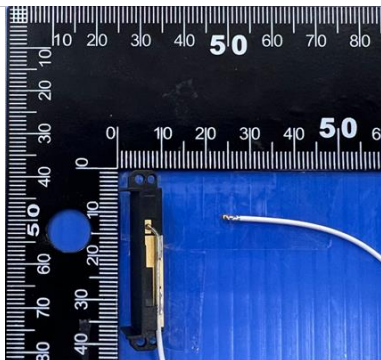
## Main Antenna

## Antenna Drawing

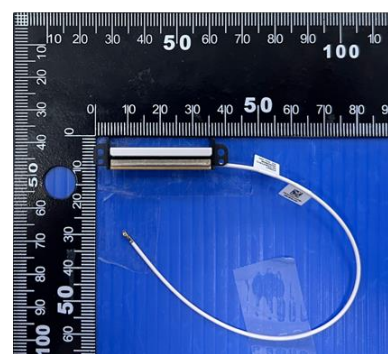
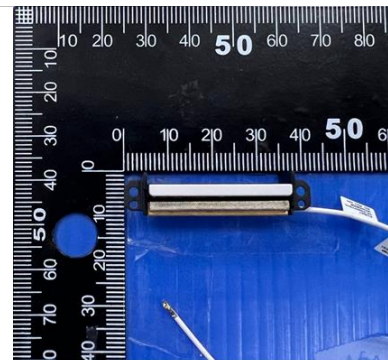


### Antenna Photo

## Front



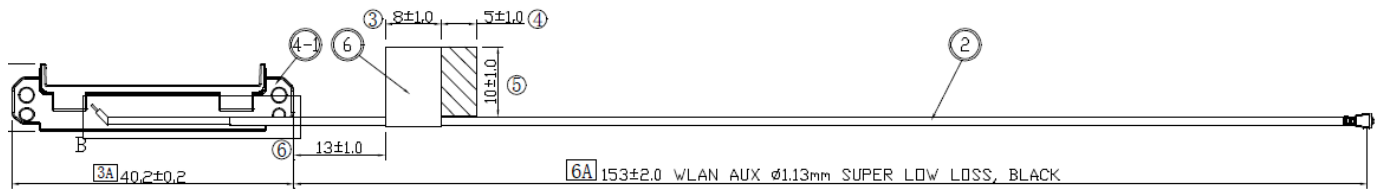
[Back](#)



**Note: antenna photo should include L type ruler**

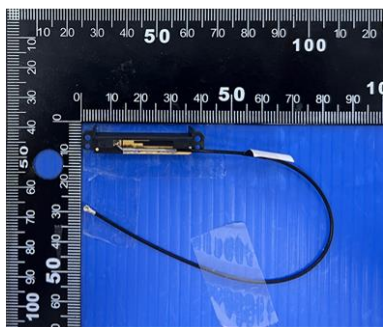
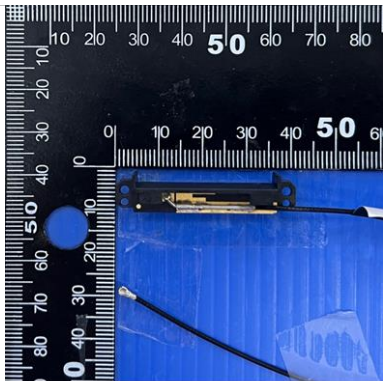
## Aux Antenna

### Antenna Drawing

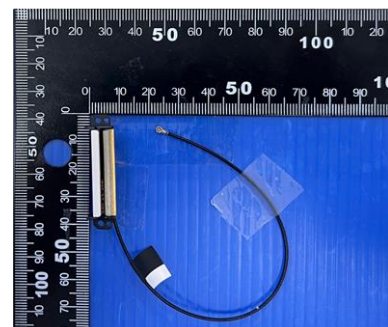
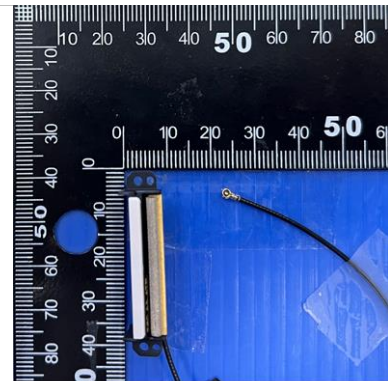


### Antenna Photo

#### Front



#### Back



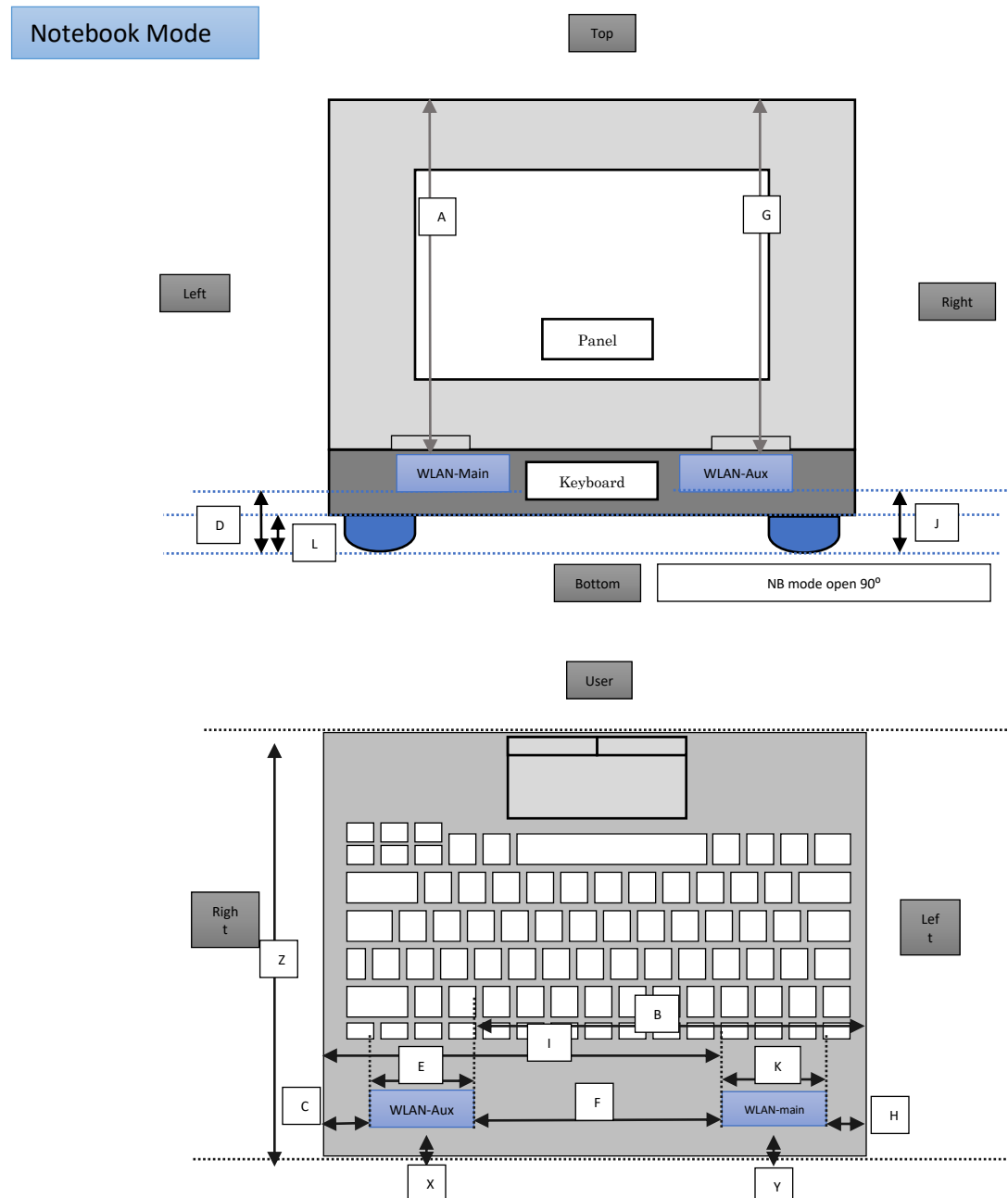
**Note: antenna photo should include L type ruler**

# Annex B. Antenna Location

## B.1 Antenna Host Platform Location Information

Include a dimensioned photo(s) or dimensioned drawing(s) of Main and Aux antenna placements (measurements are not required for receive-only antenna).

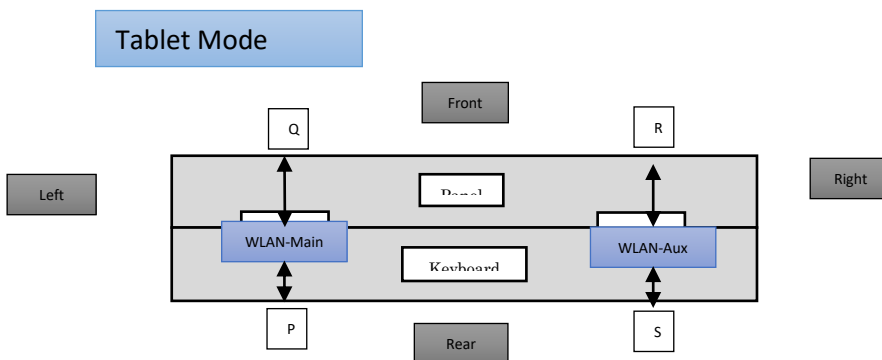
Any antenna that transmits must show dimensions to bottom of laptop. Provide a description of the materials that are used for supporting or surrounding transmit antennas; for example, non-conductive plastics vs. conductive coated plastic or metallic materials.





### Minimum Separation Distance

Item	Antenna	Position	Distance (mm)
A	WLAN-Aux	to Top	214
B	WLAN-Aux	to Left	250
C	WLAN-Aux	to Right	20
D	WLAN-Aux	to Bottom	5
E	WLAN-Aux	Main Antenna Length	40
F	Main-Aux	Main to Aux	190
G	WLAN-main	to Top	214
H	WLAN-main	to Left	20
I	WLAN-main	to Right	250
J	WLAN-main	to Bottom	5
K	WLAN-main	Aux Antenna Length	40
L	NB	Bumper thickness	3
X	WLAN-Aux	to hinge	15
Y	WLAN-Main	to hinge	15
Z	NB	Keyboard depth	223



### Minimum Separation Distance

Item	Antenna	Position	Distance (mm)
P	WLAN-Main	to Front	10
Q	WLAN-Main	to Rear	0
R	WLAN-Aux	to Front	10
S	WLAN-Aux	to Rear	0

## B.2 Antenna dimensional information for SAR evaluation

Include a dimensioned photo(s) or dimensioned drawing(s) showing the distance (mm) between the transmit antennas and the user. For notebook/laptop hosts show lapheld position (example below). For tablet hosts show all orientations including lapheld, primary & secondary portrait, primary & secondary landscape positions. Include a description of any proximity sensors or power throttling implementations that limit or exclude use of any host orientation.

Notebook Mode

