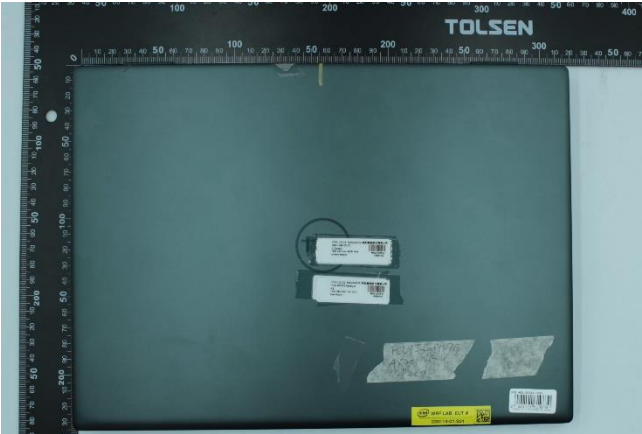




Annex F. Photographs

F.1 Test Sample

Front Sample 220114-01.S01	Back Sample 220114-01.S01
	
Laptop Sample 211021-02.S01	
	

F.2 Test position

Laptop

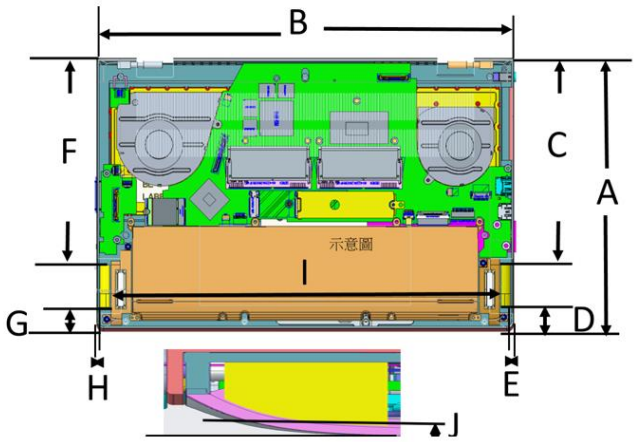
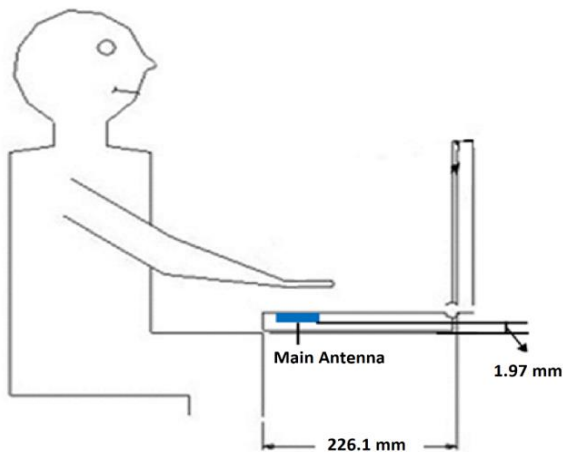


Laptop – Side view



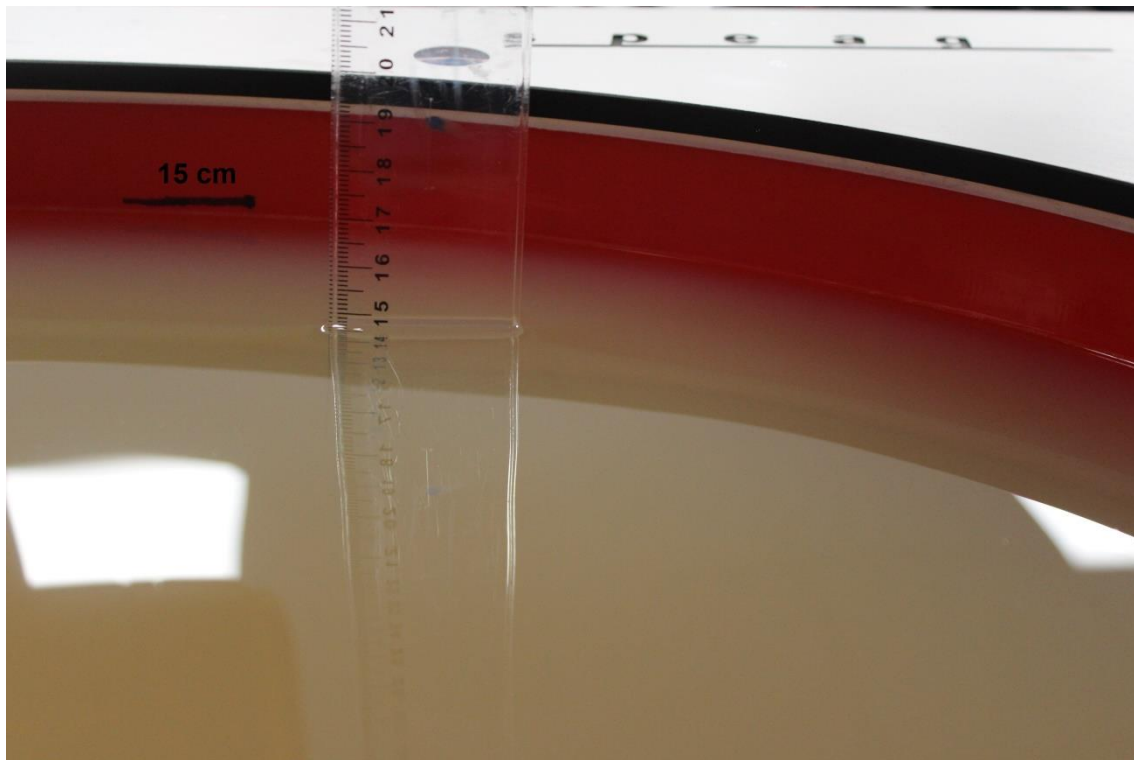
F.3 Antenna host platform location and adjacent edge positions relative to the body

All information (diagrams, values and dimensions) in this section is provided by the manufacturer

Antenna Host Platform location #1	Antenna Host Platform location #2																																	
	<table><tr><th>Item</th><th>Location</th><th>distance</th></tr><tr><td>A</td><td>SYSTEM Y</td><td>226.1</td></tr><tr><td>B</td><td>SYSTEM X</td><td>314</td></tr><tr><td>C</td><td>WLAN-main to edge</td><td>188.05</td></tr><tr><td>D</td><td>WLAN-main to edge</td><td>16.94</td></tr><tr><td>E</td><td>WLAN-main to edge</td><td>6.8</td></tr><tr><td>F</td><td>WLAN-aux to edge</td><td>187.15</td></tr><tr><td>G</td><td>WLAN-aux to edge</td><td>16.75</td></tr><tr><td>H</td><td>WLAN-aux to edge</td><td>6.8</td></tr><tr><td>I</td><td>WLAN-aux to WLAN-main</td><td>274.6</td></tr><tr><td>J</td><td>WLAN to table</td><td>1.97</td></tr></table>	Item	Location	distance	A	SYSTEM Y	226.1	B	SYSTEM X	314	C	WLAN-main to edge	188.05	D	WLAN-main to edge	16.94	E	WLAN-main to edge	6.8	F	WLAN-aux to edge	187.15	G	WLAN-aux to edge	16.75	H	WLAN-aux to edge	6.8	I	WLAN-aux to WLAN-main	274.6	J	WLAN to table	1.97
Item	Location	distance																																
A	SYSTEM Y	226.1																																
B	SYSTEM X	314																																
C	WLAN-main to edge	188.05																																
D	WLAN-main to edge	16.94																																
E	WLAN-main to edge	6.8																																
F	WLAN-aux to edge	187.15																																
G	WLAN-aux to edge	16.75																																
H	WLAN-aux to edge	6.8																																
I	WLAN-aux to WLAN-main	274.6																																
J	WLAN to table	1.97																																
Laptop Mode																																		
																																		

F.4 Phantom liquid level during measurements

ELI phantom Body liquid SAR Dasy SPEAG MBBL600-6000V6 Batch – 160630-1



End of the report

This page is intentionally left blank and marks the last page of the test report.