
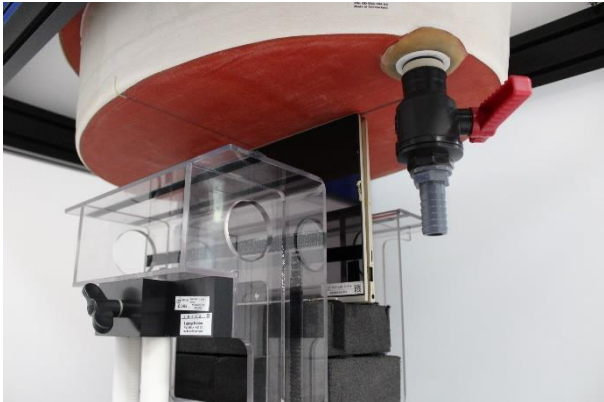
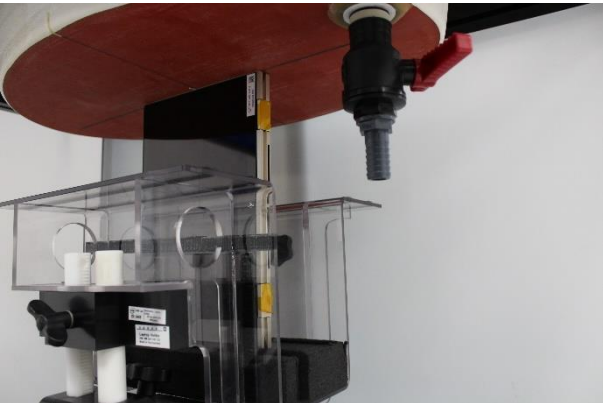



Annex F. Photographs

F.1 Test Sample

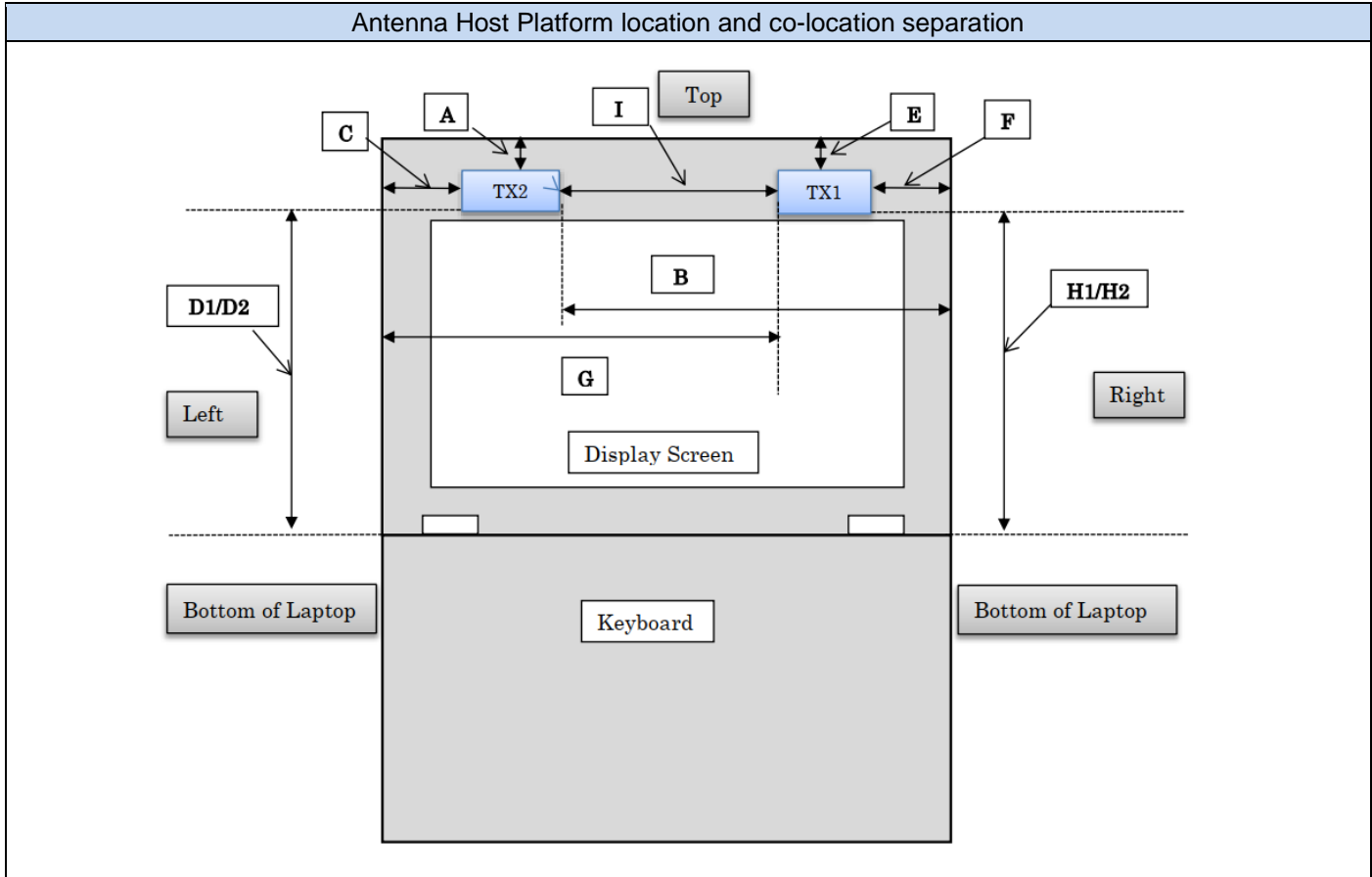
<p>Sample Front</p> 	<p>Sample Back</p> 
<p>Laptop Mode</p> 	<p>Keyboard</p> 
<p>Sample Screen</p> 	

F.2 Test positions

Back Face	Top Edge
 A photograph showing the back face of the test setup. A clear acrylic block is mounted on a black base. A red circular plate is visible above the block. A black probe with a red handle is positioned to the right of the block. A small label is visible on the top of the black base.	 A photograph showing the top edge of the test setup. A clear acrylic block is mounted on a black base. A red circular plate is visible above the block. A black probe with a red handle is positioned to the right of the block. A small label is visible on the top of the black base.
Right Edge	Left Edge
 A photograph showing the right edge of the test setup. A clear acrylic block is mounted on a black base. A red circular plate is visible above the block. A black probe with a red handle is positioned to the right of the block. A small label is visible on the top of the black base.	 A photograph showing the left edge of the test setup. A clear acrylic block is mounted on a black base. A red circular plate is visible above the block. A black probe with a red handle is positioned to the right of the block. A small label is visible on the top of the black base.

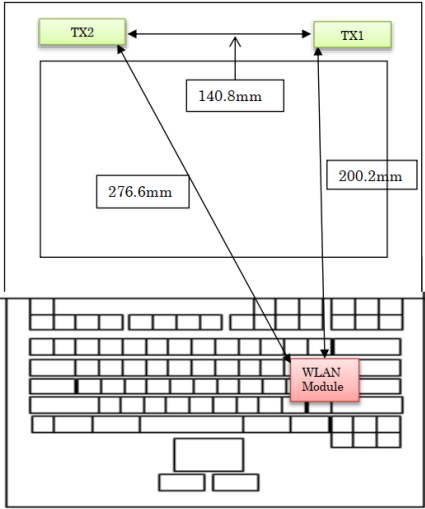
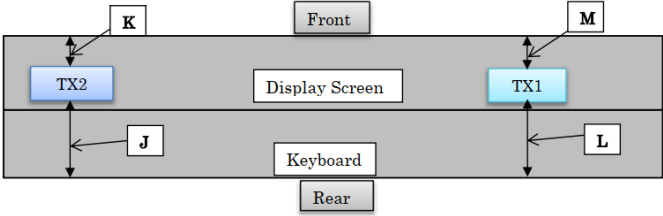
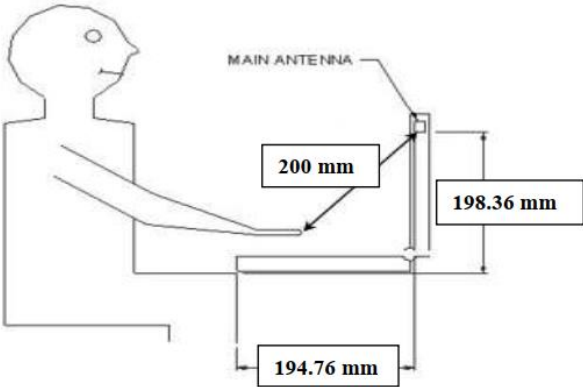
F.3 Antenna host platform location and adjacent edge positions relative to the body

Information provided by the customer



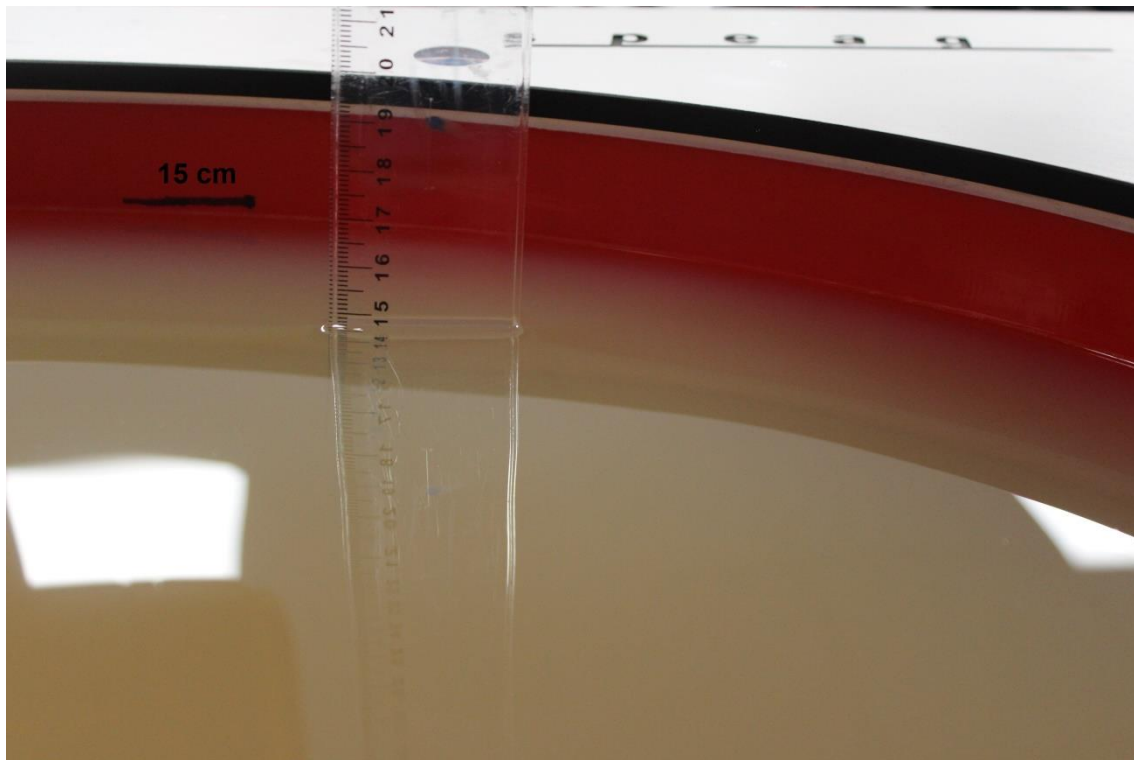
Antenna Host Platform location and co-location separation - 2

Minimum Separation Distance			
Item	Antenna	Position	Distance (mm)
A	TX2	to Top	1.68
B	TX2	to Right	140.8
C	TX2	to Left	32.85
D-1	TX2	to Bottom of Laptop (NOT include Bumper)	198.36
D-2	TX2	to Bottom of Laptop (Include Bumper)	198.86
E	TX1	to Top	1.68
F	TX1	to Right	32.85
G	TX1	to Left	223.65
H-1	TX1	to Bottom of Laptop (NOT include Bumper)	189.01
H-2	TX1	to Bottom of Laptop (Include Bumper)	189.51
I	TX1	to WLAN Aux	140.8

Antenna Host Platform location	Tablet Mode
	
Laptop Mode	
	

F.4 Phantom liquid level during measurements

ELI phantom Body liquid SAR Dasy SPEAG MBBL600-6000V6 Batch -180206-04



End of the report

This page is intentionally left blank and marks the last page of the test report.